

CL 778 5-142-28

CL 3 32-143-28

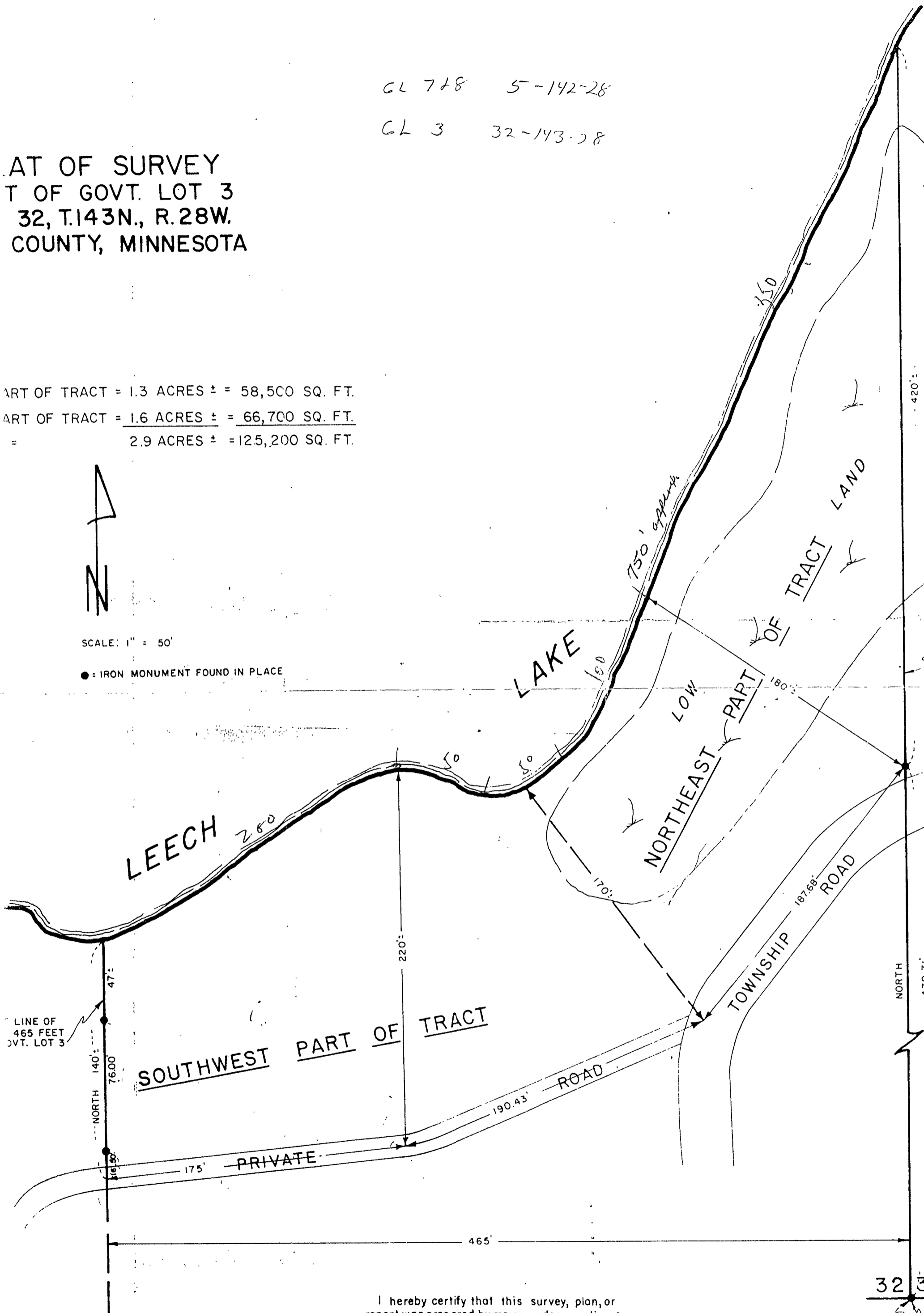
AT OF SURVEY
T OF GOVT. LOT 3
32, T.143N., R.28W.
COUNTY, MINNESOTA

PART OF TRACT = 1.3 ACRES ± = 58,500 SQ. FT.
PART OF TRACT = 1.6 ACRES ± = 66,700 SQ. FT.
= 2.9 ACRES ± = 125,200 SQ. FT.



SCALE: 1" = 50'

● = IRON MONUMENT FOUND IN PLACE



I hereby certify that this survey, plan, or report was prepared by me or under my direct supervision and that I am a duly Registered Land Surveyor under the laws of the State of Minnesota.

Roger A. Mueltonen

Date 4/24/1979 Reg. No. 11996

SOUTHEAST CORNER OF GOVT. LOT 3

32 3

S C