

DEAN M. ANDERSON  
 REGISTERED PROFESSIONAL ENGINEER & LAND SURVEYOR  
 310 South Third Street  
 BRAINERD, MINN. 56401

NORTH 1/4 CORNER  
 OF SECTION 21

PLAT OF SURVEY  
 SECTION 21, T.133 N, R.29W.  
 CASS COUNTY, MINNESOTA

I HEREBY CERTIFY THAT THIS SURVEY, PLAN OR REPORT WAS  
 PREPARED BY ME OR UNDER MY DIRECT SUPERVISION AND THAT  
 I AM A DULY REGISTERED PROFESSIONAL ENGINEER AND LAND  
 SURVEYOR UNDER THE LAWS OF THE STATE OF MINN.

*Dean M. Anderson*  
 DATE 15 April 1976 REG. NO. 3091

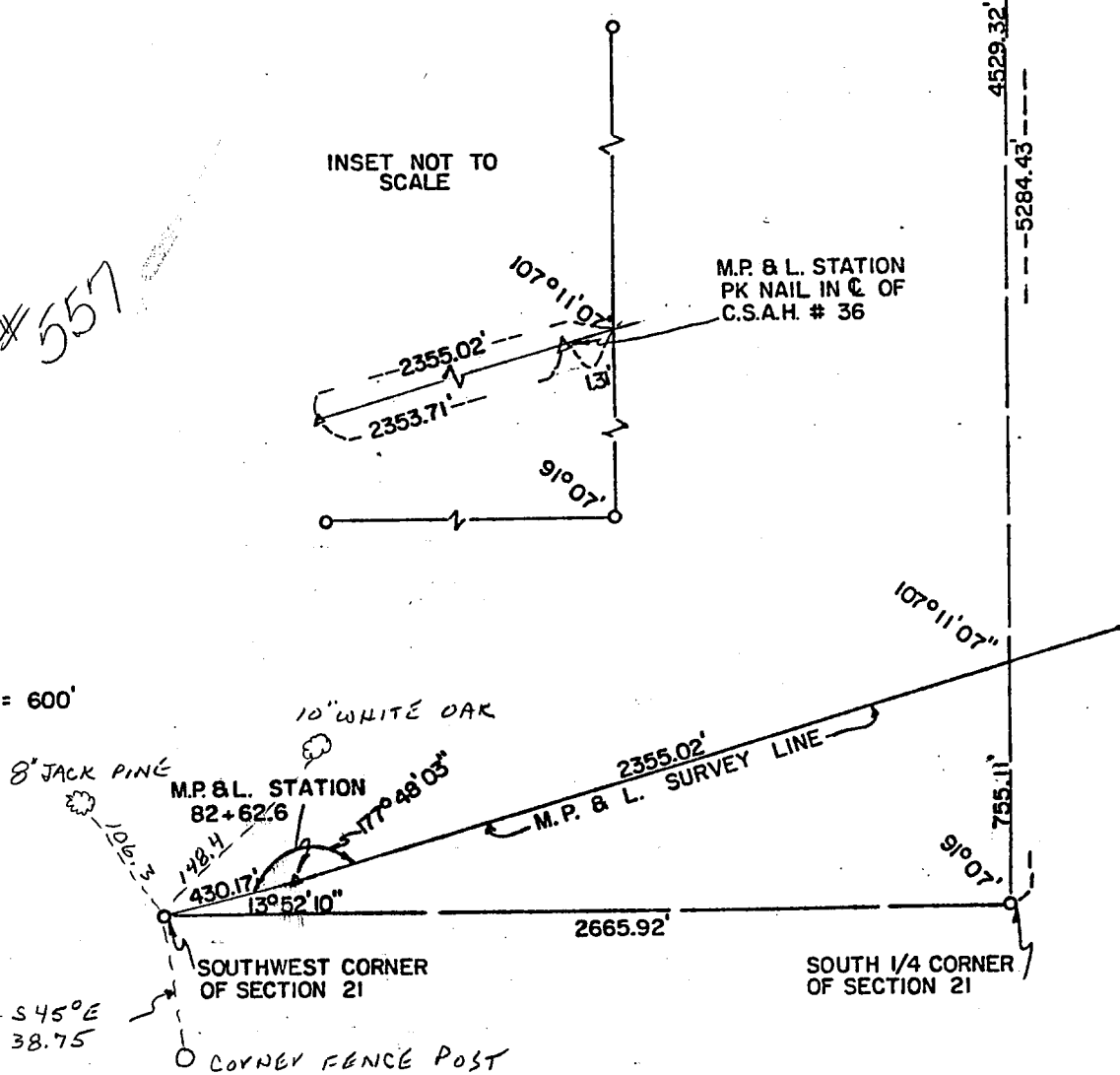
#557

INSET NOT TO  
 SCALE

M.P. & L. STATION  
 PK NAIL IN C. OF  
 C.S.A.H. # 36

SCALE: 1" = 600'

TIES



1504