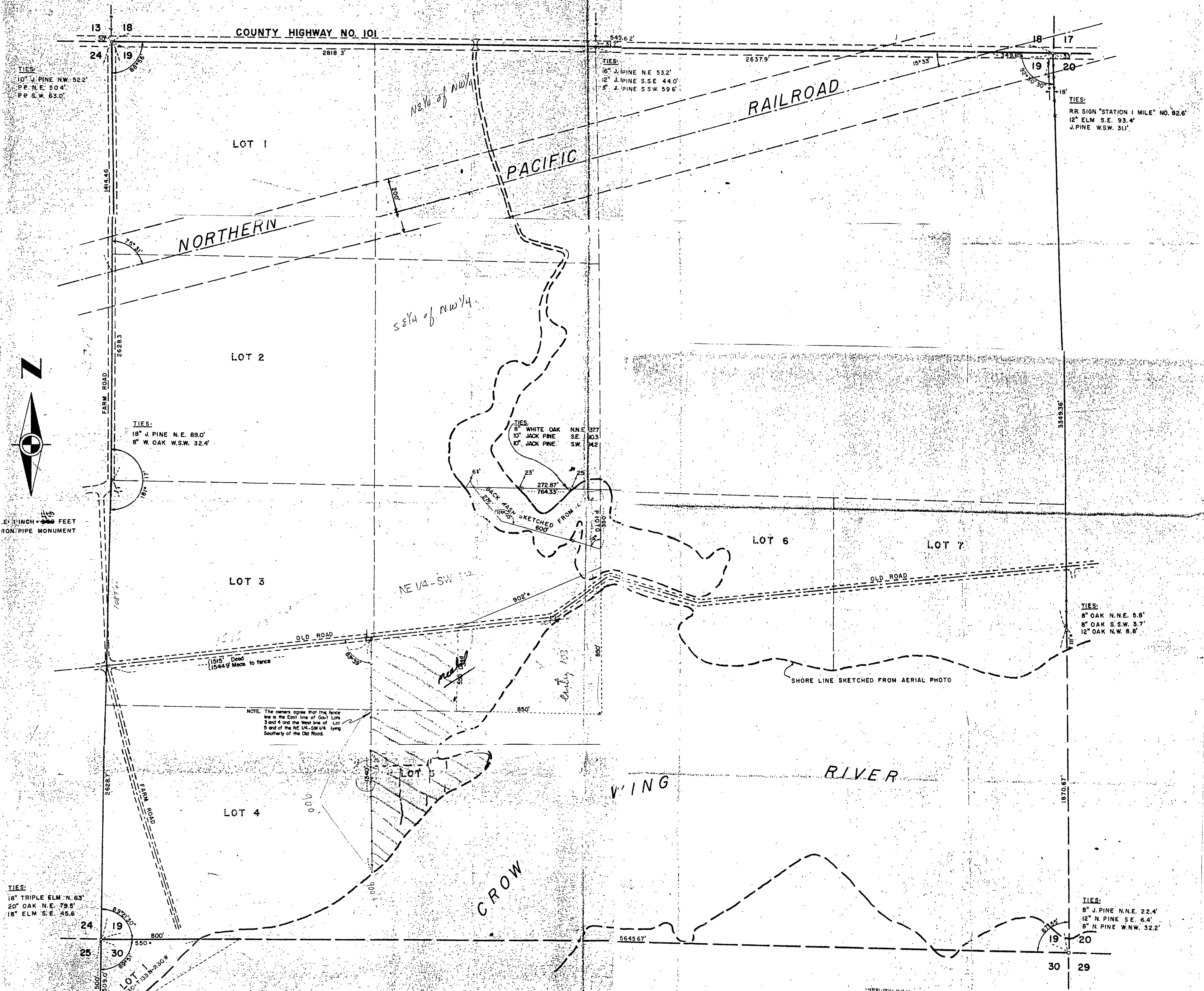


SEC. 19 - TWP 133 N - RGE 30 W



TIES:
10" J. PINE N.W. 52.2'
12" N.E. 50.4'
12" S.W. 63.0'

TIES:
16" J. PINE N.E. 53.2'
12" J. PINE S.E. 44.0'
8" J. PINE S.W. 59.6'

TIES:
RR SIGN "STATION 1 MILE" NO. 82.6'
12" ELM S.E. 93.4'
J. PINE W.S.W. 31.1'

TIES:
18" J. PINE N.E. 89.0'
8" W. OAK W.S.W. 32.4'

TIES:
8" WHITE OAK N.N.E. 37.7'
10" JACK PINE S.E. 40.3'
10" JACK PINE S.W. 34.2'

TIES:
8" OAK N.N.E. 8.8'
8" OAK S.S.W. 3.7'
12" OAK N.W. 8.8'

1 1/2" INCH = 200 FEET
IRON PIPE MONUMENT

NOTE: The owners agree that the fence line is the East line of Govt Lots 3 and 4 and the West line of Lot 5 and of the NE 1/4-SW 1/4 lying Southerly of the Old Road.

TIES:
18" TRIPLE ELM N. 63'
20" OAK N.E. 79.5'
18" ELM S.E. 45.6'

TIES:
8" J. PINE N.N.E. 22.4'
12" N. PINE S.E. 6.4'
8" N. PINE W.N.W. 32.2'

DEAN M. ANDERSON
Reg. Prof. Engr. & Land Surveyor
Minn. Registration No. 3091
Aug 1964
Amended: Sept. 1964