

PLAT OF SURVEY
 NE 1/4-SE 1/4 AND PART OF SE 1/4-SE 1/4
 SEC. 19, T. 133 N., R. 29 W.
 CASS COUNTY, MN.

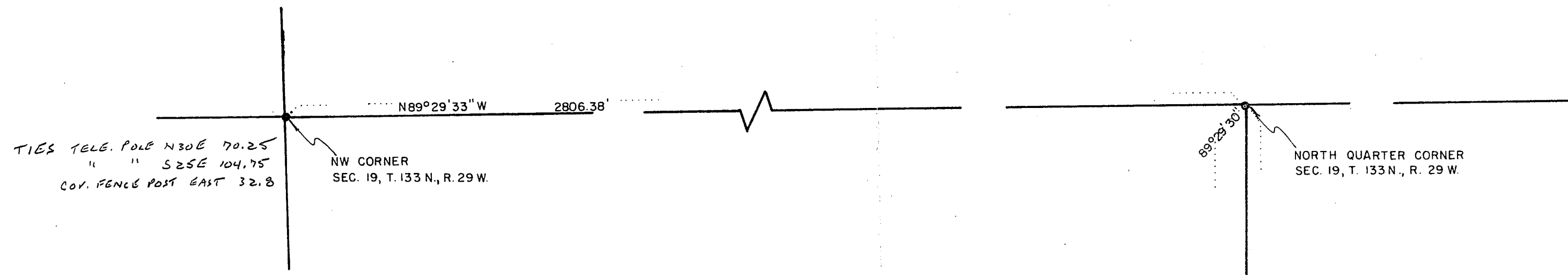
DEAN M. ANDERSON
 Reg. Prof. Engr. & Land Surveyor
 Minn. Registration No. 3091

#551

I HEREBY CERTIFY THAT THIS SURVEY PLAN OR REPORT WAS
 PREPARED BY ME OR UNDER MY DIRECT SUPERVISION AND THAT
 I AM A DULY REGISTERED PROFESSIONAL ENGINEER AND LAND
 SURVEYOR UNDER THE LAWS OF THE STATE OF MINN.
Dean M. Anderson
 DATE 7 Dec, 1977 REG. NO. 3091

SCALE: 1" = 200'
 ● = IRON MONUMENT FOUND IN PLACE

○ = 1" IRON MONUMENT
 BEARINGS ASSUMED



TIES TELE. POLE N30E 70.25'
 " S85E 104.75'
 COR. FENCE POST EAST 32.8'

NW CORNER
 SEC. 19, T. 133 N., R. 29 W.

NORTH QUARTER CORNER
 SEC. 19, T. 133 N., R. 29 W.

NW 1/4

NE 1/4

MEANDER CORNER
 3/4" PIPE
 IRON PIPE (NOT ACCEPTED)

GULL RIVER

GULL RIVER

WEST QUARTER CORNER
 SEC. 19, T. 133 N., R. 29 W.

2759.46'

N89°36'09" W

5433.02'

EAST-WEST QUARTER LINE, SEC. 19

1336.78'

1336.78'

EAST QUARTER CORNER
 SEC. 19, T. 133 N., R. 29 W.

NW 1/4-SE 1/4

NE 1/4-SE 1/4

NOTE:
 Practical boundary marks the "West line of the East half of the Southeast quarter".
 True SW corner of said E₂-SE₄ should be .47 feet East of iron pipe monument set in concrete which was found in place.
 Practical boundary established from use of pipe at SW corner and an iron pipe monument found at the Northwest corner of the SE₄.
 Projecting this line sets the Northwest corner of said E₂ at a point .66 feet East of the location for the true NW corner of said E₂.

SW 1/4

NORTH-SOUTH QUARTER LINE, SECTION 19

1274.85'

1/16 CORNER

EAST QUARTER CORNER
 SEC. 19, T. 133 N., R. 29 W.

1/16 CORNER

N89°26'17" E

1342.43'

1" IRON ROD (NOT ACCEPTED)

1324.69'

1/16 CORNER

3" IRON PIPE (NOT ACCEPTED)

1324.68'

1/16 CORNER

NOTE: NAIL SET FROM M.P.L. TIES IS 1.47' WEST OF QUARTER LINE AND 1274.65' NORTH OF SOUTH QUARTER CORNER OF SEC. 19

SW 1/4-SE 1/4

SE 1/4-SE 1/4

NORTH LINE OF SOUTH 660' OF SE 1/4-SE 1/4, SEC. 19

N87°38'35" W 330.03'

POND

EAST LINE OF WEST 330' OF SE 1/4-SE 1/4, SEC. 19

SOUTH QUARTER CORNER
 SEC. 19, T. 133 N., R. 29 W.

C.S.A.H. # 36

12" JACK PINE SW WITH BLAZE

SOUTH LINE-SEC. 19

1312.97'

3/4" IRON ROD IN CONCRETE IS .47' WEST OF TRUE 1/16 CORNER

2625.94'

330.03'

1312.97'

982.84'

JACK PINE WITH NAIL IN BLAZE

88°12'17"

42.35'

JACK PINE STUMP WITH NAIL IN BLAZE

235'

29.54'

1" REINFORCED ROD (NOT ACCEPTED)

SOUTHEAST CORNER
 SEC. 19, T. 133 N., R. 29 W.

Expanding Ties don't ck. with NW Found 3 Tie Ties CK