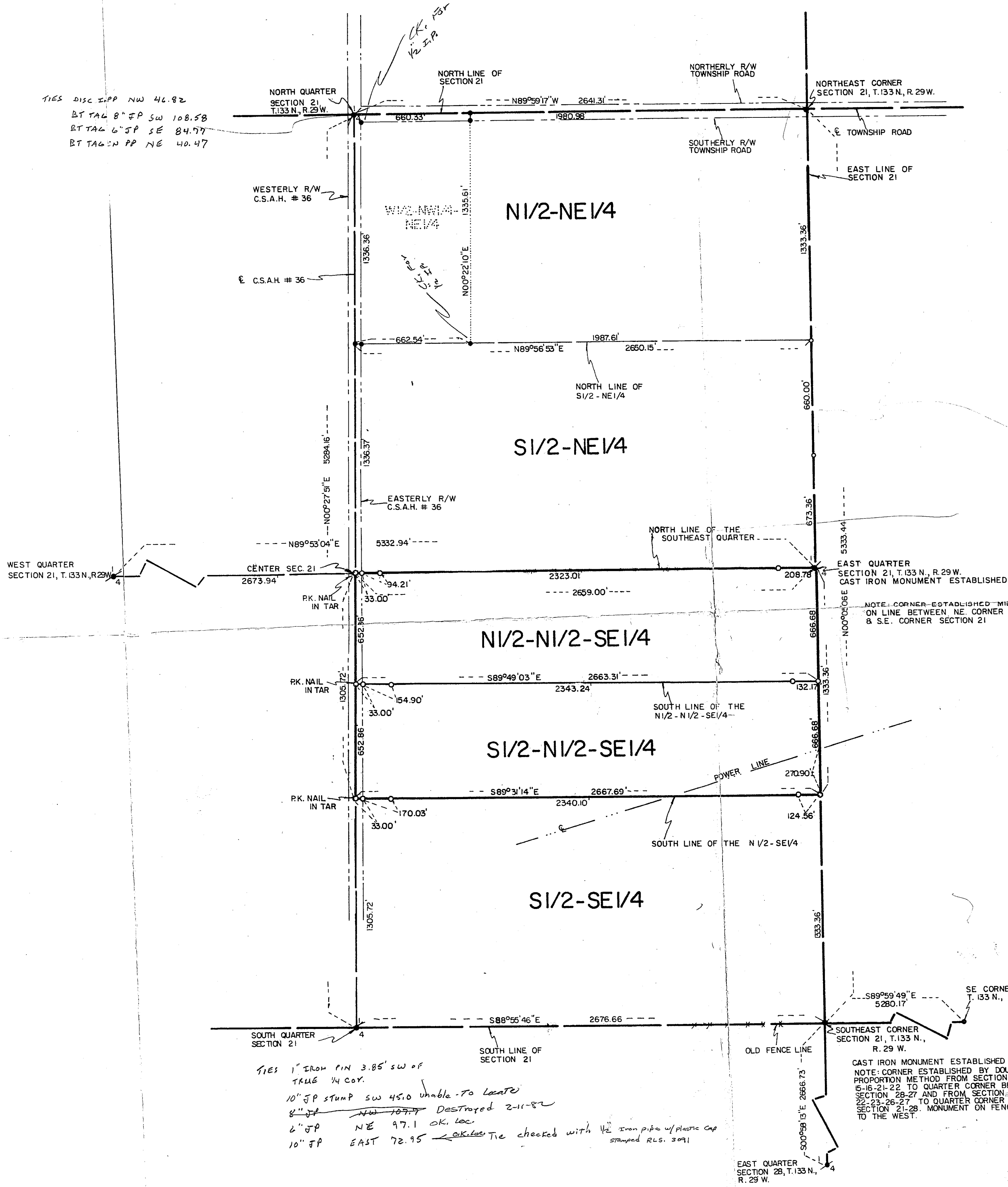


PLAT OF SURVEY  
EAST HALF OF  
SEC. 21, T. 133 N., R. 29 W.  
CASS COUNTY, MN.



TIES DISC STAMP NW 46.82  
BT TAG 8" SP SW 108.58  
RT TAG 6" SP SE 84.77  
BT TAG 2" PP NE 40.47

WEST QUARTER  
SECTION 21, T. 133 N., R. 29 W.

NORTH QUARTER  
SECTION 21,  
T. 133 N., R. 29 W.

NORTHEAST CORNER  
SECTION 21, T. 133 N., R. 29 W.

WESTERLY R/W  
C.S.A.H. # 36

E. C.S.A.H. # 36

CENTER SEC. 21  
2673.94'

PK. NAIL  
IN TAR

PK. NAIL  
IN TAR

PK. NAIL  
IN TAR

SOUTH QUARTER  
SECTION 21

TIES 1" IRON PIN 3.85' SW OF  
TRUE 1/4 COR.  
10" SP STUMP SW 45.0 unable to locate  
8" SP NW 107.7 Destroyed 2-11-82  
6" SP NE 97.1 OK, loc.  
10" SP EAST 72.95 OK, Tie checked with 1/2" Iron pipe w/ plastic cap  
stamped R.L.S. 3091

NORTHERLY R/W  
TOWNSHIP ROAD

SOUTHERLY R/W  
TOWNSHIP ROAD

NORTH LINE OF  
S1/2-NE1/4

NORTH LINE OF THE  
SOUTHEAST QUARTER

SOUTH LINE OF THE  
N1/2-N1/2-SE1/4

SOUTH LINE OF THE N1/2-SE1/4

OLD FENCE LINE

EAST QUARTER  
SECTION 28, T. 133 N.,  
R. 29 W.

E. TOWNSHIP ROAD

EAST LINE OF  
SECTION 21

EAST QUARTER  
SECTION 21, T. 133 N., R. 29 W.  
CAST IRON MONUMENT ESTABLISHED

NOTE: CORNER ESTABLISHED MIDPOINT  
ON LINE BETWEEN NE CORNER SECTION 21,  
& SE CORNER SECTION 21

SE CORNER SEC. 22,  
T. 133 N., R. 29 W.

SOUTHEAST CORNER  
SECTION 21, T. 133 N.,  
R. 29 W.

CAST IRON MONUMENT ESTABLISHED  
NOTE: CORNER ESTABLISHED BY DOUBLE  
PROPORTION METHOD FROM SECTION CORNER  
5-16-21-22 TO QUARTER CORNER BETWEEN  
SECTION 28-27 AND FROM SECTION CORNER  
SECTION 21-28 TO QUARTER CORNER BETWEEN  
SECTION 21-28. MONUMENT ON FENCE LINE  
TO THE WEST.

2/133/21  
#543

DEAN M. ANDERSON  
Reg. Prof. Engr. & Land Surveyor  
Minn. Registration No. 3091

I HEREBY CERTIFY THAT THIS SURVEY, PLAN OR REPORT WAS  
PREPARED BY ME OR UNDER MY DIRECT SUPERVISION AND THAT  
I AM A DULY REGISTERED PROFESSIONAL ENGINEER AND LAND  
SURVEYOR UNDER THE LAWS OF THE STATE OF MINN.

*Dean M. Anderson*  
22 June 1977 REG. NO. 3091

SCALE 1" = 400'

- = IRON MONUMENT FOUND IN PLACE
- = IRON MONUMENT SET
- BEARINGS ASSUMED