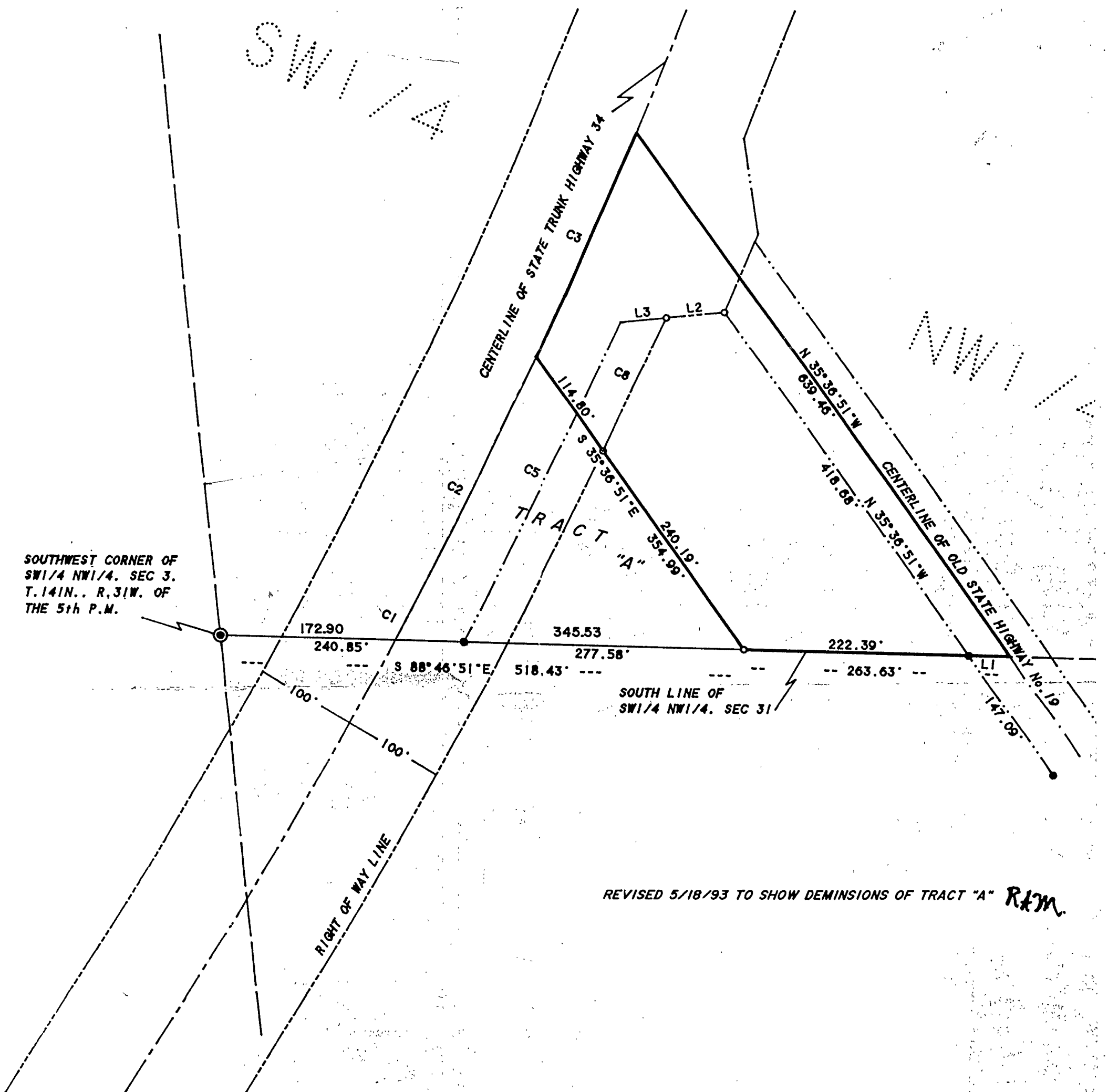


PART OF THE SOUTHWEST QUARTER OF THE
 NORTHWEST QUARTER OF SECTION 3,
 TOWNSHIP 141 NORTH, RANGE 31 WEST OF
 THE 5th PRINCIPAL MERIDIAN
 IN CASS COUNTY, MINNESOTA



REVISED 5/18/93 TO SHOW DEMINSIONS OF TRACT "A" *RJM*