

LANECKER & ASSOC. - WALKER

992056

GREG PROPER

̄ @ 8.35.2 (41.50)

9 X 265-18.58 M) 265-19.02 Δ

X 265-19.06

HD 482.87

(85) ̄ @ 9.35.8

10 X 318-50.19 M) 318-50.19 Δ

HD 35.67

FD 1/2" UP

11 X 177-18.58 M) 177-18.59 Δ

X 177-18.59

HD 251.89

̄ @ 11.35.9

12 X 252-21.49 M) 252-21.49 Δ

X 252-21.49

HD 381.16

(85) ̄ @ 12.35.11

13 X 293-40.52 M) 293-40.52 Δ

X 293-40.55

HD 400.45

FD 1/2" DOWN 1/2" IN DRIVE

(85)

X 291-36.51

M) 291-36.52

FD 1/2" FLUSH

X 291-36.53

HD 629.53

21 X 511-39.20

HD 76.92

SET UP

T. JOHNSON
K. CARLSON

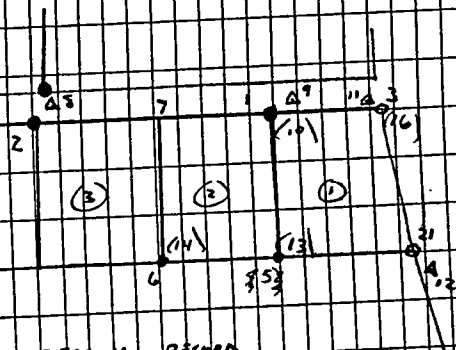
5-24-99

60° PTLY. CLAY. (69)

RECEIVED
JUN 1 1999
COUNTY SURVEYOR

̄ @ 1.35.9

16 X 337-11.02 HD 61.41 SET UP



NOTE: SET 16 @ EAST BEARING RECORD

DISTANCE FROM 10

SET 21 @ EAST BEARING RECORD DISTANCE FROM 14

A 11 - MAG NAIL IN BIT ± 10' SLY. & PARTIALS OR.

± 10' NLY. OF STOP SIGN

A 12 - MAG NAIL ± 20' WLY. & 371

± 12' SLY. & DRIVE WLY.

SW/SW 32/113/31