

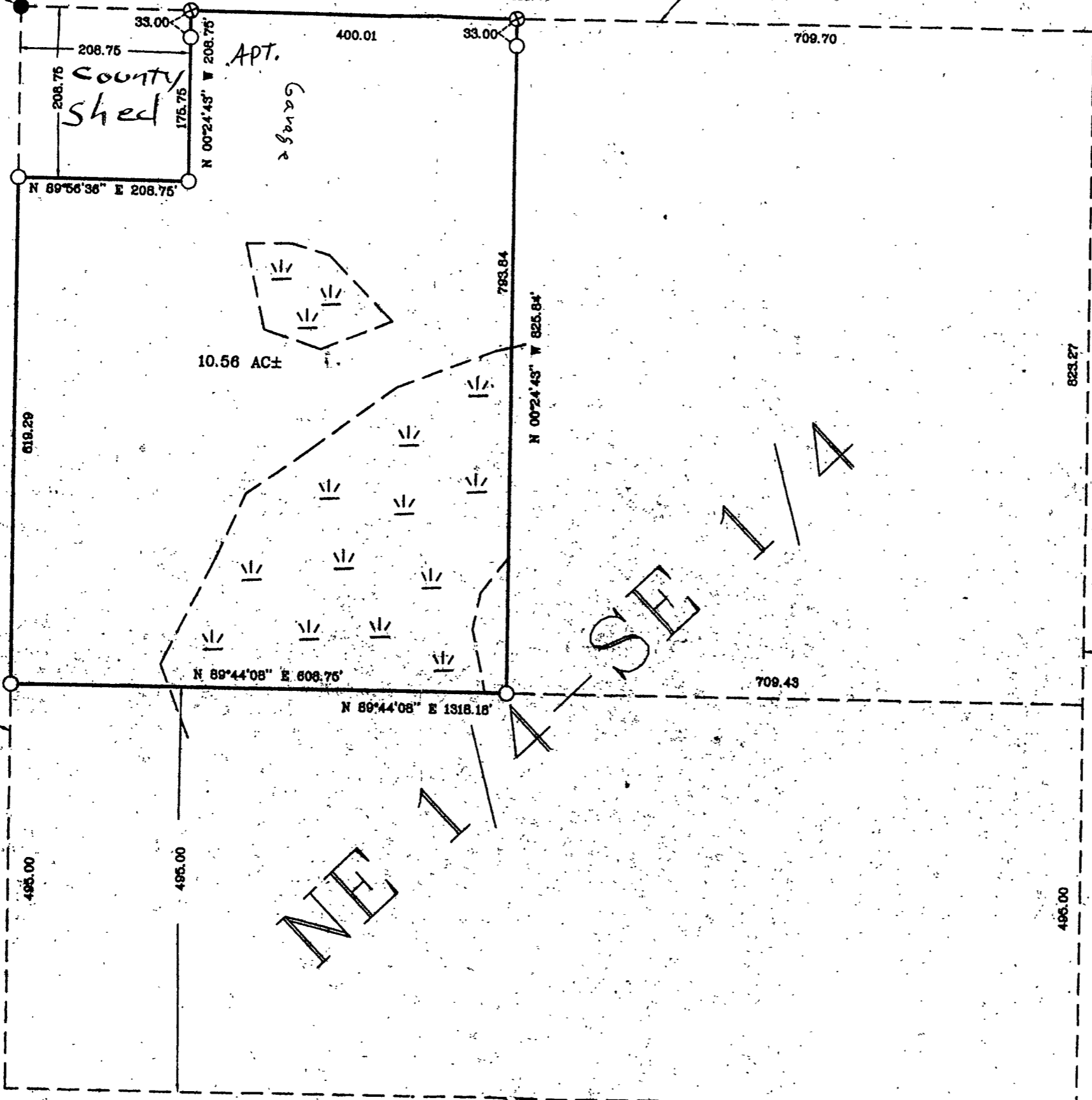
300

UMENT
SET MARKED
57-

G SYSTEM IS BASED
E 1/4-SE 1/4
23'38" W.

NORTHWEST CORNER
NE 1/4-SE 1/4

NORTH LINE
NE 1/4-SE 1/4



WEST LINE
NE 1/4-SE 1/4

EAST LINE
NE 1/4-SE 1/4

SOUTH LINE
NE 1/4-SE 1/4

SOUTHEAST CORNER
NE 1/4-SE 1/4

NE 1/4-SE 1/4

County Shed
Garage
APT.

10.56 AC±

S 00°24'43" E 1323.06'

N 89°44'08" E 1318.18'

N 00°24'43" W 825.84'

N 00°23'38" W 1318.27'

619.29

495.00

495.00

495.00

208.75

208.75

175.75

33.00

33.00

400.01

709.70

33.00

33.00

793.84

709.43

823.27

NORTHWEST CORNER
NE 1/4-SE 1/4

NORTH LINE
NE 1/4-SE 1/4

WEST LINE
NE 1/4-SE 1/4

EAST LINE
NE 1/4-SE 1/4

SOUTH LINE
NE 1/4-SE 1/4

SOUTHEAST CORNER
NE 1/4-SE 1/4

N 89°56'36" E 208.75'
N 00°24'43" W 208.75'
N 00°24'43" W 208.75'
N 89°56'36" E 208.75'

10.56 AC±

S 00°24'43" E 1323.06'

N 89°44'08" E 1318.18'

N 00°24'43" W 825.84'

N 00°23'38" W 1318.27'

619.29

495.00

495.00

495.00

208.75

208.75

175.75

33.00

33.00

400.01

709.70

33.00

33.00

793.84

709.43

823.27

NORTHWEST CORNER
NE 1/4-SE 1/4

NORTH LINE
NE 1/4-SE 1/4

WEST LINE
NE 1/4-SE 1/4

EAST LINE
NE 1/4-SE 1/4

SOUTH LINE
NE 1/4-SE 1/4

SOUTHEAST CORNER
NE 1/4-SE 1/4

N 89°56'36" E 208.75'
N 00°24'43" W 208.75'
N 00°24'43" W 208.75'
N 89°56'36" E 208.75'

10.56 AC±

S 00°24'43" E 1323.06'

N 89°44'08" E 1318.18'

N 00°24'43" W 825.84'

N 00°23'38" W 1318.27'

619.29

495.00

495.00

495.00

208.75

208.75

175.75

33.00

33.00

400.01

709.70

33.00

33.00

793.84

709.43

823.27

NORTHWEST CORNER
NE 1/4-SE 1/4

NORTH LINE
NE 1/4-SE 1/4

WEST LINE
NE 1/4-SE 1/4

EAST LINE
NE 1/4-SE 1/4

SOUTH LINE
NE 1/4-SE 1/4

SOUTHEAST CORNER
NE 1/4-SE 1/4

N 89°56'36" E 208.75'
N 00°24'43" W 208.75'
N 00°24'43" W 208.75'
N 89°56'36" E 208.75'

10.56 AC±

S 00°24'43" E 1323.06'

N 89°44'08" E 1318.18'

N 00°24'43" W 825.84'

N 00°23'38" W 1318.27'

619.29

495.00

495.00

495.00

208.75

208.75

175.75

33.00

33.00

400.01

709.70

33.00

33.00

793.84

709.43

823.27

NORTHWEST CORNER
NE 1/4-SE 1/4

NORTH LINE
NE 1/4-SE 1/4

WEST LINE
NE 1/4-SE 1/4

EAST LINE
NE 1/4-SE 1/4

SOUTH LINE
NE 1/4-SE 1/4

SOUTHEAST CORNER
NE 1/4-SE 1/4

N 89°56'36" E 208.75'
N 00°24'43" W 208.75'
N 00°24'43" W 208.75'
N 89°56'36" E 208.75'

10.56 AC±

S 00°24'43" E 1323.06'

N 89°44'08" E 1318.18'

N 00°24'43" W 825.84'

N 00°23'38" W 1318.27'

619.29

495.00

495.00

495.00

208.75

208.75

175.75

33.00

33.00

400.01

709.70

33.00

33.00

793.84

709.43

823.27

NORTHWEST CORNER
NE 1/4-SE 1/4

NORTH LINE
NE 1/4-SE 1/4

WEST LINE
NE 1/4-SE 1/4

EAST LINE
NE 1/4-SE 1/4

SOUTH LINE
NE 1/4-SE 1/4

SOUTHEAST CORNER
NE 1/4-SE 1/4

N 89°56'36" E 208.75'
N 00°24'43" W 208.75'
N 00°24'43" W 208.75'
N 89°56'36" E 208.75'

10.56 AC±

S 00°24'43" E 1323.06'

N 89°44'08" E 1318.18'

N 00°24'43" W 825.84'

N 00°23'38" W 1318.27'

619.29

495.00

495.00

495.00

208.75

208.75

175.75

33.00

33.00

400.01

709.70

33.00

33.00

793.84

709.43

823.27

NORTHWEST CORNER
NE 1/4-SE 1/4

NORTH LINE
NE 1/4-SE 1/4

WEST LINE
NE 1/4-SE 1/4

EAST LINE
NE 1/4-SE 1/4

SOUTH LINE
NE 1/4-SE 1/4

SOUTHEAST CORNER
NE 1/4-SE 1/4

N 89°56'36" E 208.75'
N 00°24'43" W 208.75'
N 00°24'43" W 208.75'
N 89°56'36" E 208.75'

10.56 AC±

S 00°24'43" E 1323.06'

N 89°44'08" E 1318.18'

N 00°24'43" W 825.84'

N 00°23'38" W 1318.27'

619.29

495.00

495.00

495.00

208.75

208.75

175.75

33.00

33.00

400.01

709.70

33.00

33.00

793.84

709.43

823.27

NORTHWEST CORNER
NE 1/4-SE 1/4

NORTH LINE
NE 1/4-SE 1/4

WEST LINE
NE 1/4-SE 1/4

EAST LINE
NE 1/4-SE 1/4

SOUTH LINE
NE 1/4-SE 1/4

SOUTHEAST CORNER
NE 1/4-SE 1/4

N 89°56'36" E 208.75'
N 00°24'43" W 208.75'
N 00°24'43" W 208.75'
N 89°56'36" E 208.75'

10.56 AC±

S 00°24'43" E 1323.06'

N 89°44'08" E 1318.18'

N 00°24'43" W 825.84'

N 00°23'38" W 1318.27'

619.29

495.00

495.00

495.00

208.75

208.75

175.75

33.00

33.00

400.01

709.70

33.00

33.00

793.84

709.43

823.27

NORTHWEST CORNER
NE 1/4-SE 1/4

NORTH LINE
NE 1/4-SE 1/4

WEST LINE
NE 1/4-SE 1/4

EAST LINE
NE 1/4-SE 1/4

SOUTH LINE
NE 1/4-SE 1/4

SOUTHEAST CORNER
NE 1/4-SE 1/4

N 89°56'36" E 208.75'
N 00°24'43" W 208.75'
N 00°24'43" W 208.75'
N 89°56'36" E 208.75'

10.56 AC±

S 00°24'43" E 1323.06'

N 89°44'08" E 1318.18'

N 00°24'43" W 825.84'

N 00°23'38" W 1318.27'

619.29

495.00

495.00

495.00

208.75

208.75

175.75

33.00

33.00

400.01

709.70

33.00

33.00

793.84

709.43

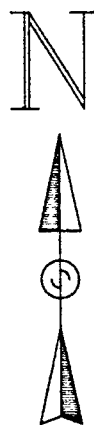
823.27

NORTHWEST CORNER
NE 1/4-SE 1/4

CERTIFICATE OF SURVEY

PART OF THE NORTHEAST QUARTER OF THE SOUTHEAST QUARTER, SECTION 19,
TOWNSHIP 140 NORTH, RANGE 30 WEST, CASS COUNTY, MINNESOTA

FOR: PAT FISTMAN
1103 RAINY LAKE DR. NW
BACKUS, MN. 56435

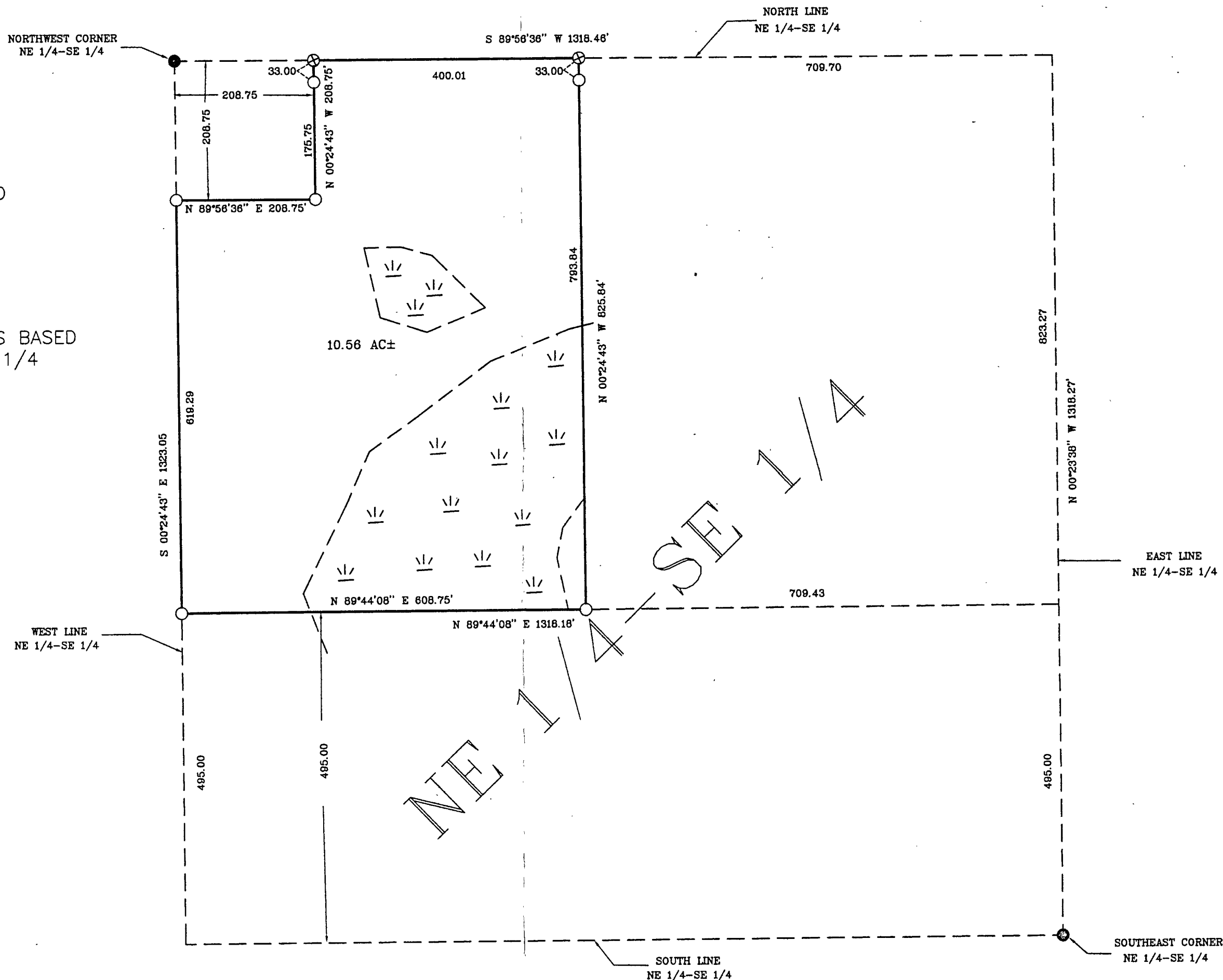


SCALE IN FEET



- DENOTES FOUND IRON MONUMENT
- DENOTES IRON MONUMENT SET MARKED BY REGISTRATION NO. 21367
- ⊗ DENOTES 3/8" REBAR SET
- ≡ DENOTES WETLAND

ORIENTATION OF THIS BEARING SYSTEM IS BASED ON THE EAST LINE OF THE NE 1/4-SE 1/4 AND ASSUMED TO BEAR N 0°23'38" W.



RECEIVED
19/140/30
DEC 29 1998
72
COUNTY SURVEYOR

I HEREBY CERTIFY THAT THIS SURVEY, PLAN, SPECIFICATION OR REPORT WAS PREPARED BY ME OR UNDER MY DIRECT SUPERVISION AND THAT I AM A DULY LICENSED ENGINEER OR LAND SURVEYOR UNDER THE LAWS OF THE STATE OF MINNESOTA.
Ally L. Johnson
DATE 12/23/98 LIC. NO. 21367

LANDECKER & ASSOCIATES INC.
WALKER, MN. 56484
PHONE 218-547-1296
PLANNING ENGINEERING SURVEYING

PROG. MGR.	DATE	REVISIONS	COMPUTER
TLF	12/23/98		98346
CHECKED BY	SCALE		BOOK 145 PG. 56
TLF			FILE NO. V98346
DRAWN BY	HORIZ. 1"=40'		SHEET 1 OF 1
DRG	VERT. NONE		