

Assessment & Tax List - 1954

Woodrow



















Assessment Roll and Tax List of Real Property in the Town of Woodrow

\*Indicate Type of Property: R-Residential, C-Commercial, I-Industrial, U-Utility, F-Farm

Cass County, Minnesota, for Taxes for the Year 1954.

Table with columns: IN WHOSE NAME ASSESSED, TO WHOM TRANSFERRED, DESCRIPTION OF PROPERTY, TRUE AND FULL VALUATIONS, ASSESSED VALUATIONS, and FINAL EQUALIZED VALUE.

Table with columns: SOLD FOR TAXES, VALUATIONS BY SCHOOL DISTRICTS AS EQUALIZED BY DEPARTMENT OF TAXATION, Tax including State Homestead, State Tax on Non-Homestead, SPECIAL TAXES, TOTAL TAXES, PAID, WHEN PAID, Number of Receipt, March Settlement 1955, June Settlement 1955, Penalty, November Settlement 1955, Collections to First Monday in January 1956, Delinquent on First Monday in January 1956, Total Delinquent Tax and Penalty, REMARKS.

Interlachen Lodge, Inc. 1st addn. Interlachen Lodge, Inc. 2nd addn.







Assessment Roll and Tax List of Real Property in the Town of Woodlawn

Indicate Type of Property: R-Residential, C-Commercial, I-Industrial, U-Utility, F-Farm

Table with columns for Property Description, Valuations (Rural, All Other, Machinery), Final Equalized Value, Taxes (District, State, Special, Total), and Remarks. Includes entries for Earl C. Maul, Geo & Jennie Holstad, John Frederick Jensen, Harold R. & Verda S. Saupé, George Galliford, Stanley & Davis S. Leburg, Robert E. Davis & Geo. W. Flandrick, Oscar W. & Agnes Wilberg, Harold R. & Verda S. Saupé, Marion D. Marton, John A. Knoepfel, and Clifford E. & Gladys R. Davies.

Vertical text on the right edge: Interlachen Lodge, Interlachen Lodge, Inc., 1st. addr., Interlachen Lodge, Inc., Semi-Or-Sol Lodge, O'Neil Trail 2nd 1st.



Assessment Roll and Tax List of Real Property in the Town of Woodrow

\* Indicate Type of Property: R-Residential, C-Commercial, I-Industrial, U-Utility, F-Farm

Form 500 (5-4) WYOMING COUNTY, MINNESOTA

Table with columns: IN WHOSE NAME ASSESSED, TO WHOM TRANSFERRED, DESCRIPTION OF PROPERTY, TRUE AND FULL VALUATIONS (LAND, BUILDINGS, MACHINERY, TOTAL), ASSESSED VALUATIONS (RURAL, ALL OTHER, MACHINERY, TOTAL ASSESSED), FINAL EQUALIZED VALUE.

Cass County, Minnesota, for Taxes for the Year 1954.

Table with columns: VALUATIONS BY SCHOOL DISTRICTS AS EQUALIZED BY DEPARTMENT OF TAXATION, Tax including State Homestead, State Tax on Non-Homestead, SPECIAL TAXES, TOTAL TAXES, PAID, WHEN PAID, Number of Receipt, March Settlement 1955, June Settlement 1955, November Settlement 1955, Collections to First Monday in January 1956, Delinquent on First Monday in January 1956, Total Delinquent Tax and Penalty, REMARKS.

Interlachen Lodge, Perlachen Lodge, Inc., 1st. Adm., Interlachen Lodge, Inc. Semi-Ord. Lodge, O'Neil Trail 2nd ps Adm.























Assessment Roll and Tax List of Real Property in the Town of Woodrow

\*Indicate Type of Property: R-Residential, C-Commercial, I-Industrial, U-Utility, F-Farm

Table with columns: IN WHOSE NAME ASSESSED, TO WHOM TRANSFERRED, DESCRIPTION OF PROPERTY, TRUE AND FULL VALUATIONS, ASSESSED VALUATIONS, FINAL EQUALIZED VALUE. Includes handwritten entries for Maurice & Dorothy M. Hall, Wm. S. Gardner & David W. Oberle, etc.

Cass County, Minnesota, for Taxes for the Year 1954.

Table with columns: SOLD FOR TAXES, VALUATIONS BY SCHOOL DISTRICTS AS EQUALIZED BY DEPARTMENT OF TAXATION, Tax including State Homestead, State Tax on Non-Homestead, SPECIAL TAXES, TOTAL TAXES, PAID, WHEN PAID, Number of Receipt, March Settlement 1955, June Settlement 1955, Penalty, November Settlement 1955, Penalty, Collections to First Monday in January 1956, Delinquent on First Monday in January 1956, Total Delinquent Tax and Penalty, REMARKS. Includes handwritten entries for 1, 2, 3, 4, 5, 6, 7, 8, 9, 10, 11, 12, 13, 14, 15, 16, 17, 18, 19, 20.

Interlachen Lodge, Inc. 1st. Adm. Interlachen Lodge, Inc. Park-On-Sea Lodge, O'Neil Trail 2nd Adm.



Assessment Roll and Tax List of Real Property in the Town of Woodrow

\*Indicate Type of Property: R-Residential, C-Commercial, I-Industrial, U-Utility, F-Farm

Table with columns: IN WHOSE NAME ASSESSED, TO WHOM TRANSFERRED, DESCRIPTION OF PROPERTY, TRUE AND FULL VALUATIONS, ASSESSED VALUATIONS, FINAL EQUALIZED VALUE.

Cass County, Minnesota, for Taxes for the Year 1954.

Table with columns: VALUATIONS BY SCHOOL DISTRICTS AS EQUALIZED BY DEPARTMENT OF TAXATION, SOLD FOR TAXES, SPECIAL TAXES, TOTAL TAXES, PAID, WHEN PAID, Number of Receipt, March Settlement 1955, June Settlement 1955, November Settlement 1955, Penalty, Collections to First Monday in January 1955, Delinquent on First Monday in January 1956, Total Delinquent Tax and Penalty, REMARKS.

Vertical text on the right edge: Interlachen Lodge, Inc. 1st addn. Interlachen Lodge, Inc. Semi-Or-Sed Lodge. O'The Trail 2nd St.





















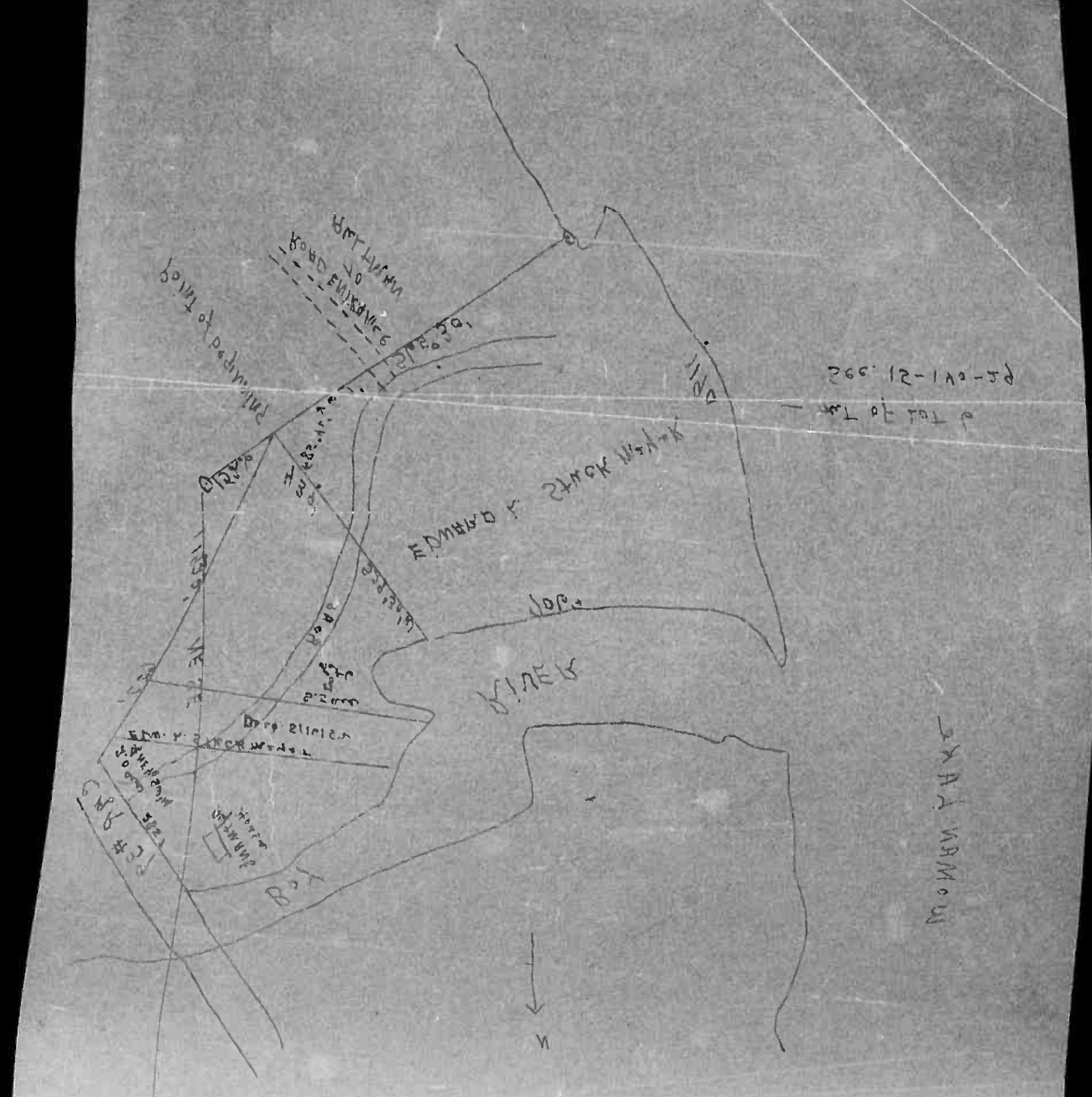






Assessment Roll and ... of Cass County, Minnesota, for Taxes for the Year 1954.

Table with columns: IN WHOSE NAME ASSESSED, TO WHOM TRANSFERRED, DESCRIPTION OF PROPERTY, TRUE AND FULL VALUATIONS, ASSESSED VALUATIONS, and FINAL EQUALIZED VALUE. Includes handwritten entries for various property owners like Enos Stanley and Charles F. & Maude H. Mains.



Cass County, Minnesota, for Taxes for the Year 1954.

Table with columns: VALUATIONS BY SCHOOL DISTRICTS AS EQUALIZED BY DEPARTMENT OF LALAHON, TAXES, PAID, WHEN PAID, and REMARKS. Includes handwritten entries for tax payments and dates.



Assessment Roll and Tax List of Real Property in the Town of Woodrow

Cass County, Minnesota, for Taxes for the Year 1954.

\*Indicate Type of Property: R-Residential, C-Commercial, I-Industrial, U-Utility, F-Farm

Table with columns: IN WHOSE NAME ASSESSED, TO WHOM TRANSFERRED, DESCRIPTION OF PROPERTY, TRUE AND FULL VALUATIONS, ASSESSED VALUATIONS, VALUATIONS BY SCHOOL DISTRICTS AS EQUALIZED BY DEPARTMENT OF TAXATION, TAX INCLUDING STATE HOMESTEAD, SPECIAL TAXES, TOTAL TAXES, PAID, WHEN PAID, Number of Receipt, March Settlement 1955, June Settlement 1955, Penalty, November Settlement 1955, Penalty, Collections to First Monday in January 1956, Penalty, Delinquent on First Monday in January 1956, Total Delinquent Tax and Penalty, REMARKS.

(Continued on next page)

Interlachen Lodge, Inc. 1st add. Interlachen Lodge, Inc. 2nd add. Of The Trail 2nd add.



Assessment Roll and Tax List of Real Property in the Town of Woodlawn

Cass County, Minnesota, for Taxes for the Year 1954.

\*Indicate Type of Property: R-Residential, C-Commercial, I-Industrial, U-Utility, F-Farm

Table with columns: IN WHOSE NAME ASSESSED, TO WHOM TRANSFERRED, DESCRIPTION OF PROPERTY, TRUE AND FULL VALUATIONS, ASSESSED VALUATIONS, VALUATIONS BY SCHOOL DISTRICTS AS EQUALIZED BY DEPARTMENT OF TAXATION, TAXES, PAID, WHEN PAID, Number of Receipt, March Settlement 1955, June Settlement 1955, Penalty, November Settlement 1955, Penalty, Collections to First Monday in January 1956, Penalty, Delinquent on First Monday in January 1956, Total Delinquent Tax and Penalty, REMARKS.

Raymond B. + Margie J. Pflanz

Raymond L. + Bernice S. Brannick

PAID IN FULL MAY 31 1955 3093

Interlachen Lodge, Inc. 1st add. Interlachen Lodge, Inc. Semi-Or-Sed Lodge, Inc. 101 The Trail 2nd Addn.



















Assessment Roll and Tax List of Real Property in the Town of Woodson

\*Indicate Type of Property: R-Residential, C-Commercial, I-Industrial, U-Utility, F-Farm

Table with columns: IN WHOSE NAME ASSESSED, TO WHOM TRANSFERRED, DESCRIPTION OF PROPERTY, TRUE AND FULL VALUATIONS, ASSESSED VALUATIONS, and FINAL EQUALIZED VALUE.

Cass County, Minnesota, for Taxes for the Year 1954.

Table with columns: VALUATIONS BY SCHOOL DISTRICTS AS EQUALIZED BY DEPARTMENT OF TAXATION, Tax including State Homestead, State Tax on Non-Homestead, SPECIAL TAXES, TOTAL TAXES, PAID, WHEN PAID, Number of Receipt, March Settlement 1955, June Settlement 1955, Penalty, November Settlement 1955, Collections to First Monday in January 1956, Delinquent on First Monday in January 1956, Total Delinquent Tax and Penalty, REMARKS.

Vertical text on the right edge of the page, including 'Interlachen Lodge' and 'O' The Trail 2nd'.



Assessment Roll and Tax List of Real Property in the Town of Woodrow

\*Indicate Type of Property: R-Residential, C-Commercial, I-Industrial, U-Utility, F-Farm

Table with columns: IN WHOSE NAME ASSESSED, TO WHOM TRANSFERRED, DESCRIPTION OF PROPERTY, TRUE AND FULL VALUATIONS, ASSESSED VALUATIONS, and FINAL EQUALIZED VALUE. Includes entries for State of Minnesota, Harold E. Dickinson, Edmund & Elsie Noll, George A. Johnson, and E. Stanley.

Cass County, Minnesota, for Taxes for the Year 1954.

Table with columns: VALUATIONS BY SCHOOL DISTRICTS AS EQUALIZED BY DEPARTMENT OF TAXATION, Tax including State Homestead, State Tax on Non-Homestead, SPECIAL TAXES, TOTAL TAXES, PAID, WHEN PAID, Number of Receipt, March Settlement 1955, June Settlement 1955, Penalty, November Settlement 1955, Penalty, Collections to First Monday in January 1956, Penalty, Delinquent on First Monday in January 1956, Total Delinquent Tax and Penalty, REMARKS. Includes entries for District No. 1 through 20.

Vertical text on the right edge of the page, including 'Interlachen Lodge, Inc.' and 'The Trail 2nd'.



Assessment Roll and Tax List of Real Property in the Town of Woodrow

\*Indicate Type of Property: R-Residential, C-Commercial, I-Industrial, U-Utility, F-Farm

Form SCD 154 (Revised 1-1-54)

IN WHOSE NAME ASSESSED	TO WHOM TRANSFERRED	DESCRIPTION OF PROPERTY				No. School District	Indicate Homestead Yes or No	Indicate Agricultural Yes or No	Indicate Type of Property	TRUE AND FULL VALUATIONS				ASSESSED VALUATIONS					FINAL EQUALIZED VALUE			
		SUBDIVISION	Sec. or Lot	Town or Block	Rng.					Number of Acres of Land	LAND Exclusive of Structures and Improvements	BUILDINGS and Other Structures	MACHINERY Permanently Attached in Real Estate	TOTAL True and Full Value	RURAL		ALL OTHER			MACHINERY Permanently Attached to Real Estate	TOTAL ASSESSED VALUE	Total Assessed Value as Equilized by the Board of Review
															Acres 100ths	Homestead Up to \$1,000 20%	Over \$4,000 and Non-Homestead 33 1/3%	Homestead Up to \$1,000 25%				
Joseph & Mabel C. Fredericks		Lot 1 less Plat of 1/4 mile				8.85				134	550		684	228		228						
		NE 1/4 of NE 1/4																				
		NW 1/4 of NE 1/4																				
		SW 1/4 of NE 1/4																				
		SE 1/4 of NE 1/4																				
Palmer M. & Marie Larson		NE 1/4 of NW 1/4 Lot 3				31.15				240	907.44		1549	128	303	431						
State of Minnesota		NW 1/4 of NW 1/4																				
State of Minnesota		SW 1/4 of NW 1/4																				
Guenter Jasper & Harry Mostrom		SE 1/4 of NW 1/4				40				120			120	40		40						
Harry & Dale Stainbrook		NE 1/4 of SW 1/4 Lot 6				29				117			117	319		319						
State of Minnesota		NW 1/4 of SW 1/4 Lot 4																				
W. C. Zawsky		SW 1/4 of SW 1/4 Lot 5				39.85				360			360	120		120						
		SE 1/4 of SW 1/4																				
Harry & Dale Stainbrook		NE 1/4 of SE 1/4 Lot 7				31.50				165			165	55		55						
Asbjorn & Margret Holte		SW 1/4 of SE 1/4 Lot 8				47.25				471			471	157		157						
		SE 1/4 of SE 1/4																				
						22.10				116.04	1954		306.6	123	944	1090						

Cass County, Minnesota, for Taxes for the Year 1954.

SOLD FOR TAXES	VALUATIONS BY SCHOOL DISTRICTS AS EQUALIZED BY DEPARTMENT OF TAXATION						Tax including State Homestead	State Tax on Non-Homestead	SPECIAL TAXES	TOTAL TAXES	PAID	WHEN PAID	Number of Receipt	March Settlement 1955	June Settlement 1955	Penalty	November Settlement 1955	Penalty	Collections to First Monday in January 1956	Penalty	Delinquent on First Monday in January 1956	Total Delinquent Tax and Penalty	REMARKS
	District No.	District No.	District No.	District No.	District No.	District No.																	
	Rate	Rate	Rate	Rate	Rate	Rate																	
	228						5226	120	5346	1	1st Half Paid MAY 31 1955	13112		2673		2673							
										2	2nd Half Paid OCT 18 1955	14425											
										3													
										4													
										5													
										6	1st Half Paid MAY 31 1955	13092		5479		5479							
										7	2nd Half Paid OCT 18 1955	1405											
										8													
										9													
										10													
										11	PAID IN FULL MAY 31 1955	13145		914									
										12													
										13	PAID IN FULL MAY 31 1955	12370		2812									
										14													
										15													
										16	PAID IN FULL MAY 31 1955	13145		1288									
										17													
										18													
										19													
										20													
										21													
										22													
										23													
										24													
										25													
										26													
										27													
										28													
										29													
										30													
										31													
										32													
										33													
										34													
										35													
										36													
										37													
										38													
										39													
										40													
										41													
										42													
										43													
										44													
										45													
										46													
										47													
										48													
										49													
										50													
										51													
										52													
										53													
										54													
										55													
										56													
										57													
										58													
										59													
										60													
										61													
										62													
										63													
										64													
										65													
										66													
										67													
										68													



Assessment Roll and Tax List of Real Property in the Town of Woodrow

\*Indicate Type of Property: R-Residential, C-Commercial, I-Industrial, U-Utility, F-Farm

Table with columns: IN WHOSE NAME ASSESSED, TO WHOM TRANSFERRED, DESCRIPTION OF PROPERTY, TRUE AND FULL VALUATIONS, ASSESSED VALUATIONS, FINAL EQUALIZED VALUE.

Cass County, Minnesota, for Taxes for the Year 1954.

Table with columns: VALUATIONS BY SCHOOL DISTRICTS AS EQUALIZED BY DEPARTMENT OF TAXATION, Tax State Homestead, SPECIAL TAXES, TOTAL TAXES, PAID, WHEN PAID, Number of Receipt, March Settlement, June Settlement, November Settlement, Penalty, Collections to First Monday in January 1956, Delinquent on First Monday in January 1956, Total Delinquent Tax and Penalty, REMARKS.



Assessment Roll and Tax List of Real Property in the Town of Woodrow

\*Indicate Type of Property: R-Residential, C-Commercial, I-Industrial, U-Utility, F-Farm

Form 501 (5-54) HALL-DAVE COMPANY, MINNEAPOLIS

Table with columns: IN WHOSE NAME ASSESSED, TO WHOM TRANSFERRED, DESCRIPTION OF PROPERTY, TRUE AND FULL VALUATIONS, ASSESSED VALUATIONS, FINAL EQUALIZED VALUE.

Cass County, Minnesota, for Taxes for the Year 1954.

Table with columns: SOLD FOR TAXES, VALUATIONS BY SCHOOL DISTRICTS AS EQUALIZED BY DEPARTMENT OF TAXATION, Tax including State Homestead, State Tax on Non-Homestead, SPECIAL TAXES, TOTAL TAXES, PAID, WHEN PAID, Number of Receipt, March Settlement 1955, June Settlement 1955, November Settlement 1955, Penalty, Collections to First Monday in January 1956, Delinquent on First Monday in January 1956, Total Delinquent Tax and Penalty, REMARKS.

Vertical text on the right edge of the page, including 'Berlachen Lodge, Inc.' and '1st add.'.



Assessment Roll and Tax List of Real Property in the Town of Woodrow

\*Indicate Type of Property: R-Residential, C-Commercial, I-Industrial, U-Utility, F-Farm

Table with columns: IN WHOSE NAME ASSESSED, TO WHOM TRANSFERRED, SUBDIVISION, TRUE AND FULL VALUATIONS, ASSESSED VALUATIONS, and FINAL EQUALIZED VALUE. Includes entries for Erhard J. & Agnes M. Hasser, Reuben Haggerty, James D. & Margaret J. Woodruff, John E. Thompson, S. J. Wister & Vivian Wister, and Ethelgarthyle & Harry P. Pfiffner.

Cass County, Minnesota, for Taxes for the Year 1954.

Table with columns: SOLD FOR TAXES, VALIDATIONS BY SCHOOL DISTRICTS AS EQUALIZED BY DEPARTMENT OF TAXATION, SPECIAL TAXES, TOTAL TAXES, PAID, WHEN PAID, Number of Receipt, March Settlement 1955, June Settlement 1955, Penalty, November Settlement 1955, Collections to First Monday in January 1956, Delinquent on First Monday in January 1956, Total Delinquent Tax and Penalty, and REMARKS. Includes handwritten notes like 'PAID IN FULL MAY 1 8 1955' and 'PAID IN FULL MAY 31 1955'.

Vertical text on the right edge: Interlachen Lodge, Inc. - 1st. addn. Interlachen Lodge, Inc. - semi-Or-Sod Lodge - 1st. addn. O. The Trail 2nd. Addn.











Assessment Roll and Tax List of Real Property in the Town of Woodson

Cass County, Minnesota, for Taxes for the Year 1954.

IN WHOSE NAME ASSESSED	TO WHOM TRANSFERRED	DESCRIPTION OF PROPERTY				TRUE AND FULL VALUATIONS										FINAL EQUALIZED VALUE							
		SUBDIVISION	Sec. or Lot	Town or Block	Rag	Number of Acres of Land	No. School District	Indicate Homestead Tax or No	Indicate Agricultural Tax or No	Indicate Type of Property	LAND Exclusive of Structures and Improvements		BUILDINGS and Other Structures	MACHINERY Permanently Attached to Real Estate	TOTAL True and Full Value		RURAL		ALL OTHER		MACHINERY Permanently Attached to Real Estate	TOTAL ASSESSED VALUE	Total Assessed Value as Equalized by the Board of Review
											Dollars	Dollars	Dollars	Dollars	Dollars		Dollars	Dollars	Dollars	Dollars	Dollars	Dollars	Dollars
George A. Johnson		NE 1/4 of NE 1/4	28	140	29	40	2	4	T	80				80	16						16		
"		NW 1/4 of NE 1/4				40			T	60				60	12						12		
Deane A. Millman		SW 1/4 of NE 1/4				40		70	T	99				99		33					33		
State of Minnesota		SE 1/4 of NE 1/4																					
George A. Johnson		NE 1/4 of NW 1/4				40		40	T	180	100			280	56						56		
State of Minnesota		NW 1/4 of NW 1/4																					
State of Minnesota		SW 1/4 of NW 1/4																					
State of Minnesota		SE 1/4 of NW 1/4																					
State of Minnesota		NE 1/4 of SW 1/4																					
State of Minnesota		NW 1/4 of SW 1/4																					
State of Minnesota		SW 1/4 of SW 1/4																					
State of Minnesota		SE 1/4 of SW 1/4																					
Harold & Evelyn Helms		NE 1/4 of SE 1/4				40		40	T	160				160	32						32		
"		NW 1/4 of SE 1/4				40			T	200				200	40						40		
"		SW 1/4 of SE 1/4				40			T	120				120	24						24		
"		SE 1/4 of SE 1/4				40			R	250	450			700	140						140		
						320				1129	660			1699	320	32					353		

SOLD FOR TAXES	VALUATIONS BY SCHOOL DISTRICTS AS EQUALIZED BY DEPARTMENT OF TAXATION						Tax Including State Homestead	State Tax on Non-Homestead	SPECIAL TAXES	TOTAL TAXES	PAID	WHEN PAID	Number of Receipt	March Settlement 1955	June Settlement 1955	Penalty	November Settlement 1955	Penalty	Collections to First Monday in January 1956	Penalty	Delinquent on First Monday in January 1956	Total Delinquent Tax and Penalty	REMARKS	
	District No.	District No.	District No.	District No.	District No.	District No.																		
	Rate	Rate	Rate	Rate	Rate	Rate																		
	H	16					366			366	PAID IN FULL	MAY 3 1955	6518											
	H	12					276			276	PAID IN FULL	MAY 3 1955	6518											
							756	18		774														
	H	56					1284			1284	PAID IN FULL	MAY 3 1955	6518											
	H	32					734			734	2nd Half Paid	OCT 18 1955												
	H	40					916			916	1st Half Paid	MAY 13 1955												
	H	24					550			550	2nd Half Paid	OCT 18 1955												
	H	140					3208			3208	1st Half Paid	MAY 13 1955												
	H	320					8090	18		8108														

Interlachen Lodge, Inc. 1st. Adm. O' The Hall 2nd Adm.



Assessment Roll and Tax List of Real Property in the Town of Woodrow

\*Indicate Type of Property: R-Residential, C-Commercial, I-Industrial, U-Utility, F-Farm

Table with columns: IN WHOSE NAME ASSESSED, TO WHOM TRANSFERRED, DESCRIPTION OF PROPERTY, TRUE AND FULL VALUATIONS, ASSESSED VALUATIONS, VALUATIONS BY SCHOOL DISTRICTS, TAX INCLUDING STATE, SPECIAL TAXES, TOTAL TAXES, PAID, WHEN PAID, Number of Receipt, March Settlement 1955, June Settlement 1955, Penalty, November Settlement 1955, Collections to First Monday in January 1956, Delinquent on First Monday in January 1956, Total Delinquent Tax and Penalty, REMARKS.

Interlachen Lodge, Interlachen Lodge, Inc., 1st adhn., Interlachen Lodge, Inc., Semi-On-Sed Lodge, O'Neil Trail 2nd Adh.



Assessment Roll and Tax List of Real Property in the Town of Woodrow

Cass County, Minnesota, for Taxes for the Year 1954.

\*Indicate Type of Property: R-Residential, C-Commercial, I-Industrial, U-Utility, F-Farm

Table with columns: IN WHOSE NAME ASSESSED, TO WHOM TRANSFERRED, DESCRIPTION OF PROPERTY, TRUE AND FULL VALUATIONS, ASSESSED VALUATIONS, VALUATIONS BY SCHOOL DISTRICTS AS EQUALIZED BY DEPARTMENT OF TAXATION, TAX INCLUDING STATE HOMESTEAD, SPECIAL TAXES, TOTAL TAXES, PAID, WHEN PAID, Number of Receipt, March Settlement 1955, June Settlement 1955, November Settlement 1955, Collections to First Monday in January 1956, Delinquent on First Monday in January 1956, Total Delinquent Tax and Penalty, REMARKS.

Interlachen Lodge, Interlachen Lodge, Inc., 1st. addr., O'Neil Trail 2nd



Assessment Roll and Tax List of Real Property in the Town of Woodrow

\*Indicate Type of Property: R-Residential, C-Commercial, I-Industrial, U-Utility, F-Farm

Table with columns: IN WHOSE NAME ASSESSED, TO WHOM TRANSFERRED, DESCRIPTION OF PROPERTY, TRUE AND FULL VALUATIONS, ASSESSED VALUATIONS, FINAL EQUALIZED VALUE.

Cass County, Minnesota, for Taxes for the Year 1954.

Table with columns: VALUATIONS BY SCHOOL DISTRICTS AS EQUALIZED BY DEPARTMENT OF TAXATION, Tax Including State Homestead, State Tax on Non-Homestead, SPECIAL TAXES, TOTAL TAXES, PAID, WHEN PAID, Number of Receipt, March Settlement 1955, June Settlement 1955, Penalty, November Settlement 1955, Penalty, Collections to First Monday in January 1956, Penalty, Delinquent on First Monday in January 1956, Total Delinquent Tax and Penalty, REMARKS.

Interlachen Lodge, Interlachen Lodge, Inc., 1st Adm., O'Neil The Trail 2nd Adm.











Assessment Roll and Tax List of Real Property in the Town of Woodrow

Indicate Type of Property: R-Residential, C-Commercial, I-Industrial, U-Utility, F-Farm

Table with columns: IN WHOSE NAME ASSESSED, TO WHOM TRANSFERRED, DESCRIPTION OF PROPERTY, TRUE AND FULL VALUATIONS (LAND, BUILDINGS, MACHINERY, TOTAL), ASSESSED VALUATIONS (RURAL, ALL OTHER, MACHINERY, TOTAL ASSESSED), FINAL EQUALIZED VALUE.

Cass County, Minnesota, for Taxes for the Year 1954.

Table with columns: SOLD FOR TAXES, VALUATIONS BY SCHOOL DISTRICTS AS EQUALIZED BY DEPARTMENT OF TAXATION, Tax Including State Homestead, State Tax on Non-Homestead, SPECIAL TAXES, TOTAL TAXES, PAID, WHEN PAID, Number of Receipt, March Settlement 1955, June Settlement 1955, Penalty, November Settlement 1955, Collections to First Monday in January 1956, Delinquent on First Monday in January 1956, Total Delinquent Tax and Penalty, REMARKS.

Vertical text on the right edge of the page, including 'Interlachen Lodge, Inc.' and other details.



Assessment Roll and Tax List of Real Property in the Town of Woodrow

Indicate Type of Property: R-Residential, C-Commercial, U-Utility, F-Farm

Table with columns: IN WHOSE NAME ASSESSED, TO WHOM TRANSFERRED, DESCRIPTION OF PROPERTY, TRUE AND FULL VALUATIONS (RURAL, ALL OTHER, MACHINERY), TOTAL ASSESSED VALUE, FINAL EQUALIZED VALUE.

(Continued on next page)

Cass County, Minnesota, for Taxes for the Year 1954.

Table with columns: VALUATIONS BY SCHOOL DISTRICTS AS EQUALIZED BY DEPARTMENT OF TAXATION, Tax Including State Homestead, SPECIAL TAXES, TOTAL TAXES, PAID, WHEN PAID, Number of Receipt, March Settlement 1955, June Settlement 1955, November Settlement 1955, Penalty, Collections to First Monday in January 1956, Delinquent on First Monday in January 1956, Total Delinquent Tax and Penalty, REMARKS.

Vertical text on the right edge of the page, including 'Interlachen Lodge, Inc.' and '1st addn.'.







Assessment Roll and Tax List of Real Property in the Town of Woodbury

Cass County, Minnesota, for Taxes for the Year 1954

Table with columns: IN WHOSE NAME ASSESSED, TO WHOM TRANSFERRED, DESCRIPTION OF PROPERTY, TRUER AND FULL VALUATIONS, ASSESSED VALUATIONS, FINAL EQUALIZED VALUE, VALUATIONS BY SCHOOL DISTRICTS AS EQUALIZED BY DEPARTMENT OF TAXATION, TAX INCLUDING STATE HOMESTEAD, SPECIAL TAXES, TOTAL TAXES, PAID, WHEN PAID, Number of Receipt, March Settlement 1955, June Settlement 1955, Penalty, November Settlement 1955, Penalty, Collections to First Monday in January 1955, Penalty, Delinquent on First Monday in January 1955, Total Delinquent Tax and Penalty, REMARKS.

Norman & Ellen Walters  
Gilbert Norman  
Franklin Transformer Mfg. Co, Inc

William S. Stacey  
Gilbert Norman

State of Minnesota  
Joe Buckelmeyer  
McKintey & H. H. Highley

State of Minnesota  
State of Minnesota  
State of Minnesota

Interlachen Lodge, Inc. 1st addn. Interlachen Lodge, Inc. Semi-Or-Sed Lodge No. 0 The Trail 2nd addn.







Assessment Roll and Tax List of Real Property in the Town of Woodson

Indicate Type of Property: R-Residential, C-Commercial, I-Industrial, U-Utility, F-Farm

Table with columns: IN WHOSE NAME ASSESSED, TO WHOM TRANSFERRED, SUBDIVISION, DESCRIPTION OF PROPERTY, TRUE AND FULL VALUATIONS (LAND, BUILDINGS, MACHINERY, TOTAL), ASSESSED VALUATIONS (RURAL, ALL OTHER, MACHINERY, TOTAL ASSESSED VALUE), Total Assessed Value as Equalized by the Board of Review, FINAL EQUALIZED VALUE.

Cass County, Minnesota, for Taxes for the Year 1954.

Table with columns: SOLD FOR TAXES, VALUATIONS BY SCHOOL DISTRICTS AS EQUALIZED BY DEPARTMENT OF TAXATION, Tax including State Homestead, State Tax on Non-Homestead, SPECIAL TAXES, TOTAL TAXES, PAID, WHEN PAID, Number of Receipt, March Settlement 1955, June Settlement 1955, Penalty, November Settlement 1955, Penalty, Collections to First Monday in January 1956, Penalty, Delinquent on First Monday in January 1956, Total Delinquent Tax and Penalty, REMARKS.

Interlachen Lodge

Interlachen Lodge, Inc. 1st addn.







Assessment Roll and Tax List of Real Property in the Town of Woodrow

Indicate Type of Property: R-Residential, C-Commercial, I-Industrial, U-Utility, F-Farm

Table with columns: IN WHOSE NAME ASSESSED, TO WHOM TRANSFERRED, SUBDIVISION, TRUCK AND FULL VALUATIONS (RURAL, ALL OTHER, MACHINERY), TOTAL ASSESSED VALUE, FINAL EQUALIZED VALUE.

Cass County, Minnesota, for Taxes for the Year 1954.

Table with columns: VALUATIONS BY SCHOOL DISTRICTS AS EQUALIZED BY DEPARTMENT OF TAXATION, TAX INCLUDING STATE HOMESTEAD, SPECIAL TAXES, TOTAL TAXES, PAID, WHEN PAID, Number of Receipt, March Settlement 1955, June Settlement 1955, November Settlement 1955, Penalty, Collections to First Monday in January 1956, Delinquent on First Monday in January 1956, Total Delinquent Tax and Penalty, REMARKS.

Interlachen Lodge

Interlachen Lodge, Inc. 1st Addn. Interlachen Lodge, Inc. 2nd Addn. Interlachen Lodge, Inc. 3rd Addn. Interlachen Lodge, Inc. 4th Addn. Interlachen Lodge, Inc. 5th Addn. Interlachen Lodge, Inc. 6th Addn. Interlachen Lodge, Inc. 7th Addn. Interlachen Lodge, Inc. 8th Addn. Interlachen Lodge, Inc. 9th Addn. Interlachen Lodge, Inc. 10th Addn. Interlachen Lodge, Inc. 11th Addn. Interlachen Lodge, Inc. 12th Addn. Interlachen Lodge, Inc. 13th Addn. Interlachen Lodge, Inc. 14th Addn. Interlachen Lodge, Inc. 15th Addn. Interlachen Lodge, Inc. 16th Addn. Interlachen Lodge, Inc. 17th Addn. Interlachen Lodge, Inc. 18th Addn. Interlachen Lodge, Inc. 19th Addn. Interlachen Lodge, Inc. 20th Addn.







Assessment Roll and Tax List of Real Property in the Town of Woodrow

Cass County, Minnesota, for Taxes for the Year 1954.

Indicate Type of Property: R-Residential, C-Commercial, I-Industrial, U-Utility, F-Farm

Table with columns: IN WHOSE NAME ASSESSED, TO WHOM TRANSFERRED, SUBDIVISION, TRUE AND FULL VALUATIONS (LAND, BUILDINGS, MACHINERY, TOTAL), ASSESSED VALUATIONS (RURAL, ALL OTHER, MACHINERY, TOTAL ASSESSED), FINAL EQUALIZED VALUE.

Table with columns: SOLD FOR TAXES, VALUATIONS BY SCHOOL DISTRICTS AS EQUALIZED BY DEPARTMENT OF TAXATION, Tax Including State Homestead, SPECIAL TAXES, TOTAL TAXES, PAID, WHEN PAID, Number of Receipt, March Settlement 1955, June Settlement 1955, Penalty, November Settlement 1955, Collection to First Monday in January 1956, Delinquent on First Monday in January 1956, Total Delinquent Tax and Penalty, REMARKS.

Interlachen Lodge

Interlachen Lodge, Inc. 1st addn. Interlachen Lodge, Inc. Semi-04-Sed Lodge. O'Neil Trail 2nd addn.



















Assessment Roll and Tax List of Real Property in the Town of Woodrow

Indicate Type of Property: R-Residential, C-Commercial, I-Industrial, U-Utility, F-Farm

Table with columns: IN WHOSE NAME ASSESSED, TO WHOM TRANSFERRED, SUBDIVISION, DESCRIPTION OF PROPERTY, TRUE AND FULL VALUATIONS, ASSESSED VALUATIONS, FINAL EQUALIZED VALUE.

Cass County, Minnesota, for Taxes for the Year 1954.

Table with columns: VALUATIONS BY SCHOOL DISTRICTS AS EQUALIZED BY DEPARTMENT OF TAXATION, TAX INCLUDING STATE HOMESTEAD, SPECIAL TAXES, TOTAL TAXES, PAID, WHEN PAID, Number of Receipts, March Settlement 1955, June Settlement 1955, Penalty, November Settlement 1955, Collections to First Monday in January 1956, Delinquent on First Monday in January 1956, Total Delinquent Tax and Penalty, REMARKS.

Interlachen Lodge, Inc.

Interlachen Lodge, Inc. Semi-Or-Sed Lodge No. 10 The Trail 2nd Adm.



Assessment Roll and Tax List of Real Property in the Town of Woodrow

\*Indicate Type of Property: R-Residential, C-Commercial, I-Industrial, U-Utility, F-Farm

Table with columns: IN WHOSE NAME ASSESSED, TO WHOM TRANSFERRED, SUBDIVISION, DESCRIPTION OF PROPERTY, TRUE AND FULL VALUATIONS (LAND, BUILDINGS, MACHINERY, TOTAL), ASSESSED VALUATIONS (RURAL, ALL OTHER, MACHINERY, TOTAL ASSESSED), Total Assessed Value, FINAL EQUALIZED VALUE.

Cass County, Minnesota, for Taxes for the Year 1954.

Table with columns: SOLD FOR TAXES, VALUATIONS BY SCHOOL DISTRICTS AS EQUALIZED BY DEPARTMENT OF TAXATION, Tax Including State Homestead, State Tax on Non-Homestead, SPECIAL TAXES, TOTAL TAXES, PAID, WHEN PAID, Number of Receipt, March Settlement 1955, June Settlement 1955, Penalty, November Settlement 1955, Collections to First Monday in January 1956, Delinquent on First Monday in January 1956, Total Delinquent Tax and Penalty, REMARKS.

Interlachen Lodge, Inc.

Interlachen Lodge, Inc. 3rd Glen's Pointement Interlachen Lodge, Inc. 1st add. 2nd of The Trail 2nd add.







Assessment Roll and Tax List of Real Property in the Town of Woodrow

\*Indicate Type of Property: R-Residential, C-Commercial, I-Industrial, U-Utility, F-Farm

Table with columns: IN WHOSE NAME ASSESSED, TO WHOM TRANSFERRED, SUBDIVISION, TRUE AND FULL VALUATIONS (LAND, BUILDINGS, MACHINERY, TOTAL), ASSESSED VALUATIONS (RURAL, ALL OTHER, MACHINERY, TOTAL ASSESSED), FINAL EQUALIZED VALUE.

Cass County, Minnesota, for Taxes for the Year 1954.

Table with columns: SOLD FOR TAXES, VALUATIONS BY SCHOOL DISTRICTS AS EQUALIZED BY DEPARTMENT OF TAXATION, Tax including State Homestead, State Tax on Non-Homestead, SPECIAL TAXES, TOTAL TAXES, PAID, WHEN PAID, Number of Receipt, March Settlement 1955, June Settlement 1955, Penalty, November Settlement 1955, Collections to First Monday in January 1956, Delinquent on First Monday in January 1956, Total Delinquent Tax and Penalty, REMARKS.

Interlachen Lodge, Inc.

Interlachen Lodge, Inc. 3rd Glen's Point



Assessment Roll and Tax List of Real Property in the Town of Woodrow

\*Indicate Type of Property: R-Residential, C-Commercial, I-Industrial, U-Utility, F-Farm

Table with columns: IN WHOSE NAME ASSESSED, TO WHOM TRANSFERRED, SUBDIVISION, TRUE AND FULL VALUATIONS (LAND, BUILDINGS, MACHINERY, TOTAL), ASSESSED VALUATIONS (RURAL, ALL OTHER, MACHINERY, TOTAL ASSESSED VALUE), FINAL EQUALIZED VALUE.

Cass County, Minnesota, for Taxes for the Year 1954.

Table with columns: SOLD FOR TAXES, VALUATIONS BY SCHOOL DISTRICTS AS EQUALIZED BY DEPARTMENT OF TAXATION, Tax Including State Homestead, SPECIAL TAXES, TOTAL TAXES, PAID, WHEN PAID, Number of Receipt, March Settlement 1955, June Settlement 1955, Penalty, November Settlement 1955, Collections to First Monday in January 1956, Delinquent on First Monday in January 1956, Total Delinquent Tax and Penalty, REMARKS.

Interlachen Lodge, Inc.

Interlachen Lodge, Inc. 2nd Add.



































Assessment Roll and Tax List of Real Property in the Town of Woodrow

\*Indicate Type of Property: R-Residential, C-Commercial, I-Industrial, U-Utility, F-Farm

Table with columns: IN WHOSE NAME ASSESSED, TO WHOM TRANSFERRED, SUBDIVISION, TRUE AND FULL VALUATIONS (LAND, BUILDINGS, MACHINERY, TOTAL), ASSESSED VALUATIONS (RURAL, ALL OTHER, MACHINERY, TOTAL), and FINAL EQUALIZED VALUE.

Cass County, Minnesota, for Taxes for the Year 1954.

Table with columns: SOLD FOR TAXES, VALUATIONS BY SCHOOL DISTRICTS AS EQUALIZED BY DEPARTMENT OF TAXATION, Tax including State Homestead, State Tax on Non-Homestead, SPECIAL TAXES, TOTAL TAXES, PAID, WHEN PAID, Number of Receipt, March Settlement 1955, June Settlement 1955, Penalty, November Settlement 1955, Collections to First Monday in January 1956, Delinquent on First Monday in January 1956, Total Delinquent Tax and Penalty, REMARKS.

Interlachen Lodge, Inc.

Interlachen Lodge, Inc. 3rd Glen's Point, Minn. 1st addn.



Assessment Roll and Tax List of Real Property in the Town of Woodrow

\*Indicate Type of Property: R-Residential, C-Commercial, I-Industrial, U-Utility, F-Farm

Table with columns: IN WHOSE NAME ASSESSED, TO WHOM TRANSFERRED, SUBDIVISION, TRUE AND FULL VALUATIONS (LAND, BUILDINGS, MACHINERY, TOTAL), ASSESSED VALUATIONS (RURAL, ALL OTHER, MACHINERY, TOTAL ASSESSED), FINAL EQUALIZED VALUE.

Cass County, Minnesota, for Taxes for the Year 1954.

Table with columns: SOLD FOR TAXES, VALUATIONS BY SCHOOL DISTRICTS AS EQUALIZED BY DEPARTMENT OF TAXATION, Tax including State Homestead, SPECIAL TAXES, TOTAL TAXES, PAID, WHEN PAID, Number of Receipt, March Settlement 1955, June Settlement 1955, Penalty, November Settlement 1955, Penalty, Collections to First Monday in January 1956, Delinquent on First Monday in January 1956, Total Delinquent Tax and Penalty, REMARKS.

Interlachen Lodge, Inc.

Interlachen Lodge, Inc. 3rd Glen's Point The Interlachen Lodge, Inc. Sent-On-Sed Lodge







Assessment Roll and Tax List of Real Property in the Town of Woodrow

\*Indicate Type of Property: R-Residential, C-Commercial, I-Industrial, U-Utility, F-Farm

Table with columns: IN WHOSE NAME ASSESSED, TO WHOM TRANSFERRED, DESCRIPTION OF PROPERTY, TRUE AND FULL VALUATIONS, ASSESSED VALUATIONS, FINAL EQUALIZED VALUE. Includes handwritten entries for Theodore J. & Juanita N. Yagor & Eunice H. Nagel.

Cass County, Minnesota, for Taxes for the Year 1954.

Table with columns: SOLID FOR TAXES, VALUATIONS BY SCHOOL DISTRICTS AS EQUALIZED BY DEPARTMENT OF TAXATION, TAX INCLUDING STATE HOMESTEAD, STATE TAX ON NON-HOMESTEAD, SPECIAL TAXES, TOTAL TAXES, PAID, WHEN PAID, Number of Receipt, March Settlement 1955, June Settlement 1955, Penalty, November Settlement 1955, Collections to First Monday in January 1956, Delinquent on First Monday in January 1956, Total Delinquent Tax and Penalty, REMARKS. Includes handwritten entries for 'PAID IN FULL MAY 31 1955' and numerical values.

Interlachen Lodge, Inc. 1st Addn.

Interlachen Lodge, Inc. 1st Addn. 2nd Addn. 3rd Addn. 4th Addn. 5th Addn. 6th Addn. 7th Addn. 8th Addn. 9th Addn. 10th Addn. 11th Addn. 12th Addn. 13th Addn. 14th Addn. 15th Addn. 16th Addn. 17th Addn. 18th Addn. 19th Addn. 20th Addn.











Assessment Roll and Tax List of Real Property in the Town of Woodrow

Indicate Type of Property: R-Residential, C-Commercial, I-Industrial, U-Utility, F-Farm

Interlachen Lodge, Inc. 1st Addn.

Table with columns: IN WHOSE NAME ASSESSED, TO WHOM TRANSFERRED, SUBDIVISION, TRUE AND FULL VALUATIONS (LAND, BUILDINGS, MACHINERY, TOTAL), ASSESSED VALUATIONS (RURAL, ALL OTHER, MACHINERY, TOTAL ASSESSED), FINAL EQUALIZED VALUE.

Table with columns: VALUATIONS BY SCHOOL DISTRICTS AS EQUALIZED BY DEPARTMENT OF TAXATION, TAX including State Homestead, SPECIAL TAXES, TOTAL TAXES, PAID, WHEN PAID, Number of Receipt, March Settlement 1955, June Settlement 1955, November Settlement 1955, Collections to First Monday in January 1956, Delinquent on First Monday in January 1956, Total Delinquent Tax and Penalty, REMARKS.

Interlachen Lodge, Inc. 1st Addn. Mrs. Regan... and O'Neil... 2nd Addn.







Assessment Roll and Tax List of Real Property in the Town of Woodlawn

Indicate Type of Property: R-Residential, C-Commercial, I-Industrial, U-Utility, F-Farm

Form 50 (54)

Table with columns: IN WHOSE NAME ASSESSED, TO WHOM TRANSFERRED, SUBDIVISION, TRUE AND FULL VALUATIONS, ASSESSED VALUATIONS, FINAL EQUALIZED VALUE.

Cass County, Minnesota, for Taxes for the Year 1954.

Table with columns: SOLD FOR TAXES, VALUATIONS BY SCHOOL DISTRICTS AS EQUALIZED BY DEPARTMENT OF TAXATION, SPECIAL TAXES, TOTAL TAXES, PAID, WHEN PAID, Number of Receipt, March Settlement 1955, June Settlement 1955, November Settlement 1955, Collections to First Monday in January 1956, Delinquent on First Monday in January 1956, Total Delinquent Tax and Penalty, REMARKS.

Interlachen Lodge, Inc. 1st Adm.

Interlachen Lodge, Inc. 1st Adm.



Assessment Roll and Tax List of Real Property in the Town of Woodrow

\*Indicate Type of Property: R-Residential, C-Commercial, I-Industrial, U-Utility, F-Farm

Form 50 (54) TAXES-DAY COMPANY, MINNEAPOLIS

Table with columns: IN WHOSE NAME ASSESSED, TO WHOM TRANSFERRED, SUBDIVISION, TRUE AND FULL VALUATIONS, ASSESSED VALUATIONS, FINAL EQUALIZED VALUE. Includes handwritten entries for State of Minnesota and Daterlachan Lodge, Inc.

Cass County, Minnesota, for Taxes for the Year 1954.

Table with columns: VALUATIONS BY SCHOOL DISTRICTS AS EQUALIZED BY DEPARTMENT OF TALLATION, Tax Including State Homestead, SPECIAL TAXES, TOTAL TAXES, PAID, WHEN PAID, Number of Receipt, March Settlement 1955, June Settlement 1955, November Settlement 1955, Collections to First Monday in January 1956, Delinquent on First Monday in January 1956, Total Delinquent Tax and Penalty, REMARKS. Includes handwritten entries for taxes paid and delinquency.

Vertical text on the left edge of the page: Interlachen Lodge, Inc. 1st Addn.

Vertical text on the right edge of the page: Interlachen Lodge, Inc. 1st Addn.



Assessment Roll and Tax List of Real Property in the Town of Woodrow

\*Indicate Type of Property: R-Residential, C-Commercial, I-Industrial, U-Utility, F-Farm

Form 30 (54) JULY-1954 COMPANY, MINNEAPOLIS

Table with columns: IN WHOSE NAME ASSESSED, TO WHOM TRANSFERRED, SUBDIVISION, Sec. of Lot, Town or Block, Rng, Number of Acres of Land, No. School District, Indicate Homestead, Indicate Agricultural, Indicate Type of Property, TRUE AND FULL VALUATIONS (LAND, BUILDINGS, MACHINERY, TOTAL), ASSESSED VALUATIONS (RURAL, ALL OTHER, MACHINERY, TOTAL ASSESSED VALUE, Total Assessed Value as Equalized by the Board of Review), FINAL EQUALIZED VALUE.

Cass County, Minnesota, for Taxes for the Year 1954.

Table with columns: SOLD FOR TAXES, VALUATIONS BY SCHOOL DISTRICTS AS EQUALIZED BY DEPARTMENT OF TAXATION (District No., Rate, Mills), Tax Including State Homestead, State Tax on Non-Homestead, SPECIAL TAXES, TOTAL TAXES, PAID, WHEN PAID (Month, Day, Year), Number of Receipt, March Settlement 1955, June Settlement 1955, Penalty, November Settlement 1955, Penalty, Collections to First Monday in January 1956, Delinquent on First Monday in January 1956, Total Delinquent Tax and Penalty, REMARKS.

Interlachen Lodge, Inc. 1st Adm.

Interlachen Lodge, Inc. 1st Adm. 2nd Adm.











Assessment Roll and Tax List of Real Property in the Town of Woodruff

\*Indicate Type of Property: R-Residential, C-Commercial, I-Industrial, U-Utility, F-Farm

Table with columns: IN WHOSE NAME ASSESSED, TO WHOM TRANSFERRED, SUBDIVISION, TRUE AND FULL VALUATIONS (LAND, BUILDINGS, MACHINERY, TOTAL), ASSESSED VALUATIONS (RURAL, ALL OTHER, MACHINERY, TOTAL ASSESSED), FINAL EQUALIZED VALUE, SOLD FOR TAXES, VALUATIONS BY SCHOOL DISTRICTS AS EQUALIZED BY DEPARTMENT OF TAXATION, TAX INCLUDING STATE HOMESTEAD, STATE TAX ON NON-HOMESTEAD, SPECIAL TAXES, TOTAL TAXES, PAID, WHEN PAID, Number of Receipt, March Settlement 1955, June Settlement 1955, November Settlement 1955, Collections to First Monday in January 1956, Delinquent on First Monday in January 1956, Total Delinquent Tax and Penalty, REMARKS.

Interlachen Lodge, Inc. 1st Adm.

Interlachen Lodge, Inc. 1st Adm. 2nd Adm. 3rd Adm. 4th Adm. 5th Adm. 6th Adm. 7th Adm. 8th Adm. 9th Adm. 10th Adm. 11th Adm. 12th Adm. 13th Adm. 14th Adm. 15th Adm. 16th Adm. 17th Adm. 18th Adm. 19th Adm. 20th Adm.



















Assessment Roll and Tax List of Real Property in the Town of Woodstock, Indicate Type of Property: R-Residential, C-Commercial, I-Industrial, U-Utility, F-Farm

Cass County, Minnesota, for Taxes for the Year 1954.

Table with columns: IN WHOSE NAME ASSESSED, TO WHOM TRANSFERRED, SUBDIVISION, DESCRIPTION OF PROPERTY, TRUE AND FULL VALUATIONS, ASSESSED VALUATIONS, FINAL EQUALIZED VALUE.

Table with columns: SOLD FOR TAXES, VALUATIONS BY SCHOOL DISTRICTS AS EQUALIZED BY DEPARTMENT OF TAXATION, Tax including State Homestead, State Tax on Non-Homestead, SPECIAL TAXES, TOTAL TAXES, PAID, WHEN PAID, Number of Receipt, March Settlement 1955, June Settlement 1955, November Settlement 1955, Collections to First Monday in January 1956, Delinquent on First Monday in January 1956, Total Delinquent Tax and Penalty, REMARKS.

Interlachen Lodge, Inc. 1st Addn. Semi-on-Sed Lodge

Interlachen Lodge, Inc. 3rd Glen's Point Levee End of The Trail Farle Bay Pine Teepe Portage East's Area End of The Trail







Assessment Roll and Tax List of Real Property in the Town of Woodrow

Indicate Type of Property: R-Residential, C-Commercial, I-Industrial, U-Utility, F-Farm

Table with columns: IN WHOSE NAME ASSESSED, TO WHOM TRANSFERRED, SUBDIVISION, DESCRIPTION OF PROPERTY, TRUE AND FULL VALUATIONS, ASSESSED VALUATIONS, FINAL EQUALIZED VALUE.

Cass County, Minnesota, for Taxes for the Year 1954.

Table with columns: SOLD FOR TAXES, VALUATIONS BY SCHOOL DISTRICTS AS EQUALIZED BY DEPARTMENT OF TAXATION, Tax including State Homestead, State Tax on Non-Homestead, SPECIAL TAXES, TOTAL TAXES, PAID, WHEN PAID, Number of Receipt, March Settlement 1955, June Settlement 1955, Penalty, November Settlement 1955, Penalty, Collections to First Monday in January 1956, Penalty, Delinquent on First Monday in January 1956, Total Delinquent Tax and Penalty, REMARKS.

Interlachen Lodge, Inc. 1st Addn. Benl-on-Sed Lodge

Interlachen Lodge, Inc. 2nd Addn. Karlle Day me Teepe Portage



Assessment Roll and Tax List of Real Property in the Town of Woodrow

\*Indicate Type of Property: R-Residential, C-Commercial, I-Industrial, U-Utility, F-Farm

Interlachen Lodge, Inc. 1st Addn. Senl-on-Sed Lodge

Table with columns: IN WHOSE NAME ASSESSED, TO WHOM TRANSFERRED, SUBDIVISION, TRUE AND FULL VALUATIONS (LAND, BUILDINGS, MACHINERY, TOTAL), ASSESSED VALUATIONS (RURAL, ALL OTHER, MACHINERY, TOTAL), FINAL EQUALIZED VALUE.

Cass County, Minnesota, for Taxes for the Year 1954.

Table with columns: SOLD FOR TAXES, VALUATIONS BY SCHOOL DISTRICTS AS EQUALIZED BY DEPARTMENT OF TAXATION, Tax Including State Homestead, State Tax on Non-Homestead, SPECIAL TAXES, TOTAL TAXES, PAID, WHEN PAID, Number of Receipt, March Settlement 1955, June Settlement 1955, Penalty, November Settlement 1955, Penalty, Collections to First Monday in January 1956, Delinquent on First Monday in January 1956, Total Delinquent Tax and Penalty, REMARKS.

Interlachen Lodge, Inc. 1st Addn. Senl-on-Sed Lodge



Assessment Roll and Tax List of Real Property in the Town of Woodrow

\*Indicate Type of Property: R-Residential, C-Commercial, I-Industrial, U-Utility, F-Farm

Form 50 (54) 11-15-54

Table with columns: IN WHOSE NAME ASSESSED, TO WHOM TRANSFERRED, SUBDIVISION, TRUE AND FULL VALUATIONS, ASSESSED VALUATIONS, FINAL EQUALIZED VALUE.

Cass County, Minnesota, for Taxes for the Year 1954.

Table with columns: SOLID FOR TAXES, VALUATIONS BY SCHOOL DISTRICTS AS EQUALIZED BY DEPARTMENT OF TAXATION, TAX INCLUDING STATE HOMESTEAD, SPECIAL TAXES, TOTAL TAXES, PAID, WHEN PAID, Number of Receipt, March Settlement 1955, June Settlement 1955, November Settlement 1955, Collections to First Monday in January 1956, Delinquent on First Monday in January 1956, Total Delinquent Tax and Penalty, REMARKS.

Interlachen Lodge, Inc. 1st Addn. Tugler Park

Interlachen Lodge, Inc. 1st Addn. Karl's Bay and Teepee Portage



Assessment Roll and Tax List of Real Property in the Town of Woodrow

\*Indicate Type of Property: R-Residential, C-Commercial, I-Industrial, U-Utility, F-Farm

Cass County, Minnesota, for Taxes for the Year 1954.

Main table with columns: IN WHOSE NAME ASSESSED, TO WHOM TRANSFERRED, SUBDIVISION, TRUE AND FULL VALUATIONS, ASSESSED VALUATIONS, VALUATIONS BY SCHOOL DISTRICTS AS EQUALIZED BY DEPARTMENT OF TAXATION, TAX INCLUDING STATE, STATE TAX ON NON-HOMESTEAD, SPECIAL TAXES, TOTAL TAXES, PAID, WHEN PAID, Number of Receipt, March Settlement 1955, June Settlement 1955, Penalty, November Settlement 1955, Penalty, Collections to First Monday in January 1956, Delinquent on First Monday in January 1956, Total Delinquent Tax and Penalty, REMARKS.

Vertical text on the left margin: Interlachen Lodge, Inc., 1st Addn., Glen's Point, Tusler Park.

Vertical text on the right margin: De la Croix, End of The Trail 3rd, Rearrangement, End of The Trail, Karle Day, me Teepe Porriage, End of The Trail 2.



Assessment Roll and Tax List of Real Property in the Town of Woodrow

Cass County, Minnesota, for Taxes for the Year 1954

\*Indicate Type of Property: R-Residential, C-Commercial, I-Industrial, U-Utility, F-Farm

Table with columns: IN WHOSE NAME ASSESSED, TO WHOM TRANSFERRED, SUBDIVISION, TRUE AND FULL VALUATIONS, ASSESSED VALUATIONS, VALUATIONS BY SCHOOL DISTRICTS AS EQUALIZED BY DEPARTMENT OF TAXATION, SOLD FOR TAXES, PAID, WHEN PAID, Number of Receipt, March Settlement 1955, June Settlement 1955, November Settlement 1955, Collections to First Monday in January 1956, Delinquent on First Monday in January 1956, Total Delinquent Tax and Penalty, REMARKS.

Interlachen Lodge, Inc. 1st Addr. Tuxler Park Glen's Point

Interlachen Lodge, Inc. 1st Addr. Tuxler Park Glen's Point















Assessment Roll and Tax List of Real Property in the Town of Woodrow

Indicate Type of Property: R-Residential, C-Commercial, I-Industrial, U-Utility, F-Farm

Table with columns: IN WHOSE NAME ASSESSED, TO WHOM TRANSFERRED, SUBDIVISION, TRUE AND FULL VALUATIONS (LAND, BUILDINGS, MACHINERY, TOTAL), ASSESSED VALUATIONS (RURAL, ALL OTHER, MACHINERY, TOTAL), FINANCIAL EQUALIZED VALUE.

Cass County, Minnesota, for Taxes for the Year 1954.

Table with columns: SOLD FOR TAXES, VALUATIONS BY SCHOOL DISTRICTS AS EQUALIZED BY DEPARTMENT OF TAXATION, Tax including State Homestead, State Tax on Non-Homestead, SPECIAL TAXES, TOTAL TAXES, PAID, WHEN PAID, Number of Receipt, March Settlement 1955, June Settlement 1955, Penalty, November Settlement 1955, Penalty, Collections to First Monday in January 1956, Penalty, Delinquent on First Monday in January 1956, Total Delinquent Tax and Penalty, REMARKS.

Interlachen Lodge, Inc. 1st Addn. Tussler Park, Glen's Point, End of The Trail, Genl-on-Sed Lodge

Interlachen Lodge, Inc. 1st Addn. Tussler Park, Glen's Point, End of The Trail, Genl-on-Sed Lodge



Assessment Roll and Tax List of Real Property in the Town of Woodrow, Cass County, Minnesota, for Taxes for the Year 1954.

\*Indicate Type of Property: R-Residential, C-Commercial, I-Industrial, U-Utility, F-Farm

Table with columns: IN WHOSE NAME ASSESSED, TO WHOM TRANSFERRED, SUBDIVISION, TRUE AND FULL VALUATIONS (LAND, BUILDINGS, MACHINERY, TOTAL), ASSESSED VALUATIONS (RURAL, ALL OTHER, MACHINERY, TOTAL ASSESSED), FINAL EQUALIZED VALUE.

Table with columns: VALUATIONS BY SCHOOL DISTRICTS AS EQUALIZED BY DEPARTMENT OF TAXATION (District No., Rate), Tax including State Homestead, State Tax on Non-Homestead, SPECIAL TAXES, TOTAL TAXES, PAID, WHEN PAID, Number of Receipt, March Settlement, June Settlement, November Settlement, Collections to First Monday in January, Delinquent on First Monday in January, Total Delinquent Tax and Penalty, REMARKS.

Vertical text on the left margin: Interlachen Lodge, Inc., Tusler Park, Glen's Point, End of the Trail, 1st Addn, Semi-on-Seat Lodge.

Vertical text on the right margin: End of the Trail 3rd Addn, Rearrangement, End of the Trail, into, Karlie Bay and Teepe Portage, End of the Trail 2nd Addn.



Assessment Roll and Tax List of Real Property in the Town of Woodrow, Cass County, Minnesota, for Taxes for the Year 1954.

\*Indicate Type of Property: R-Residential, C-Commercial, I-Industrial, U-Utility, F-Farm

Table with columns: IN WHOSE NAME ASSESSED, TO WHOM TRANSFERRED, SUBDIVISION, TRUE AND FULL VALUATIONS (LAND, BUILDINGS, MACHINERY, TOTAL), ASSESSED VALUATIONS (RURAL, ALL OTHER, MACHINERY, TOTAL ASSESSED), FINAL EQUALIZED VALUE.

Table with columns: SOLD FOR TAXES, VALUATIONS BY SCHOOL DISTRICTS AS EQUALIZED BY DEPARTMENT OF TAXATION, SPECIAL TAXES, TOTAL TAXES, PAID, WHEN PAID, Number of Receipt, March Settlement, June Settlement, November Settlement, Collections to First Monday in January, Delinquent on First Monday in January, Total Delinquent Tax and Penalty, REMARKS.

Vertical text on the left margin: Interlachen Lodge, Inc., 1st. Adm., Semi-on-Sed Lodge, End of The Trail, Glen's Point, Tusler Park.

Vertical text on the right margin: Cedar Grove Beach, Locost, Rearrangement, End of The Trail, Int, Karle Bay, the Teepe Porch, West's Beach, End of The Trail 2nd Adm.







Assessment Roll and Tax List of Real Property in the Town of Woodrow, Minnesota

\*Indicate Type of Property: R-Residential, C-Commercial, I-Industrial, U-Utility, F-Farm

Table with columns: IN WHOSE NAME ASSESSED, TO WHOM TRANSFERRED, SUBDIVISION, TRUE AND FULL VALUATIONS (LAND, BUILDINGS, MACHINERY, TOTAL), ASSESSED VALUATIONS (RURAL, ALL OTHER, MACHINERY, TOTAL ASSESSED VALUE), FINAL EQUALIZED VALUE.

Cass County, Minnesota, for Taxes for the Year 1954.

Table with columns: SOLD FOR TAXES, VALUATIONS BY SCHOOL DISTRICTS AS EQUALIZED BY DEPARTMENT OF TAXATION, TAX INCLUDING STATE HOMESTEAD, SPECIAL TAXES, TOTAL TAXES, PAID, WHEN PAID, Number of Receipt, March Settlement 1955, June Settlement 1955, Penalty, November Settlement 1955, Collections to First Monday in January 1956, Delinquent on First Monday in January 1956, Total Delinquent Tax and Penalty, REMARKS.







Assessment Roll and Tax List of Real Property in the Town of Woodrow, Minnesota

Cass County, Minnesota, for Taxes for the Year 1954.

\*Indicate Type of Property: R-Residential, C-Commercial, I-Industrial, U-Utility, F-Farm

Table with columns: IN WHOSE NAME ASSESSED, TO WHOM TRANSFERRED, DESCRIPTION OF PROPERTY, TRUE AND FULL VALUATIONS, ASSESSED VALUATIONS, VALUATIONS BY SCHOOL DISTRICTS AS EQUALIZED BY DEPARTMENT OF TAXATION, TAXES, PAID, WHEN PAID, Number of Receipt, March Settlement 1955, June Settlement 1955, November Settlement 1955, Penalty, Collections to First Monday in January 1956, Delinquent on First Monday in January 1956, Total Delinquent Tax and Penalty, REMARKS.

Vertical text on the left margin: Interlachen Lodge, Inc., Glen's Point, End of The Trail, Inverlachen Lodge, Inc., 1st Addn, Semi-or-Sed Lodge.

Vertical text on the right margin: End of The Trail 3rd Addn, Rear Management, End of The Trail, Karl's Day, me Teepe Portage, West's Brewery, End of The Trail 2nd Addn.











Assessment Roll and Tax List of Real Property in the Town of Woodrow

\*Indicate Type of Property: R-Residential, C-Commercial, I-Industrial, U-Utility, F-Farm

Table with columns: IN WHOSE NAME ASSESSED, TO WHOM TRANSFERRED, DESCRIPTION OF PROPERTY, TRUE AND FULL VALUATIONS, ASSESSED VALUATIONS, FINAL EQUALIZED VALUE. Includes handwritten entries for various property owners like Robert Deane, E. W. Giest, and Albert C. Sonnenberg.

Cass County, Minnesota, for Taxes for the Year 1954.

Table with columns: VALUATIONS BY SCHOOL DISTRICTS AS EQUALIZED BY DEPARTMENT OF TAXATION, TAXES, PAID, WHEN PAID, Number of Receipt, March Settlement 1955, June Settlement 1955, November Settlement 1955, Collections to First Monday in January 1956, Delinquent on First Monday in January 1956, Total Delinquent Tax and Penalty, REMARKS. Includes handwritten notes like 'Forfeited 11-15-55' and 'PAID IN FULL'.

Vertical text on the left edge of the page, including 'Interlachen Lodge, Inc.', 'Fusler Park', 'Glen's Point', 'End of the Trail', 'Paul-on-Sed Lodge', 'End of the Trail 2nd', 'End of the Trail 3rd', 'End of the Trail 4th', 'End of the Trail 5th', 'End of the Trail 6th', 'End of the Trail 7th', 'End of the Trail 8th', 'End of the Trail 9th', 'End of the Trail 10th', 'End of the Trail 11th', 'End of the Trail 12th', 'End of the Trail 13th', 'End of the Trail 14th', 'End of the Trail 15th', 'End of the Trail 16th', 'End of the Trail 17th', 'End of the Trail 18th', 'End of the Trail 19th', 'End of the Trail 20th'.

Vertical text on the right edge of the page, including 'De Jar Grove Road', 'Nocassin Road', 'Rearrangement', 'Katie Bay', 'Tape Postage', 'Est's Dress'.











Assessment Roll and Tax List of Real Property in the Town of Woodrow

\*Indicate Type of Property: R-Residential, C-Commercial, I-Industrial, U-Utility, F-Farm

Form 50 (5-1) CASS COUNTY, MINNESOTA

Table with columns: IN WHOSE NAME ASSESSED, TO WHOM TRANSFERRED, SUBDIVISION, TRUE AND FULL VALUATIONS, ASSESSED VALUATIONS, FINAL EQUALIZED VALUE.

Cass County, Minnesota, for Taxes for the Year 1954.

Table with columns: VALUATIONS BY SCHOOL DISTRICTS AS EQUALIZED BY DEPARTMENT OF TAXATION, TAXES, PAID, WHEN PAID, Number of Receipt, March Settlement 1955, June Settlement 1955, November Settlement 1955, Collections to First Monday in January 1956, Delinquent on First Monday in January 1956, Total Delinquent Tax and Penalty, REMARKS.

Vertical text on the left edge: Interlachen Lodge, Inc., Gusler Park, Glen's Point, End of the Trail, Earl-on-Sed Lodge, End of the Trail 2nd Addn.

Vertical text on the right edge: Cedar Grove, Wood, Locasin Point, Rearrangement, End of the Trail, Earle Bay, Mrs Teepe Postage, Earl's Beer.



Assessment Roll and Tax List of Real Property in the Town of Woodburn

Indicate Type of Property: R-Residential, C-Commercial, I-Industrial, U-Utility, F-Farm

Table with columns: IN WHOSE NAME ASSESSED, TO WHOM TRANSFERRED, DESCRIPTION OF PROPERTY, TRUE AND FULL VALUATIONS, ASSESSED VALUATIONS, FINAL EQUALIZED VALUE.

Cass County, Minnesota, for Taxes for the Year 1954.

Table with columns: SOLD FOR TAXES, VALUATIONS BY SCHOOL DISTRICTS AS EQUALIZED BY DEPARTMENT OF TAXATION, SPECIAL TAXES, TOTAL TAXES, PAID, WHEN PAID, Number of Receipt, March Settlement 1955, June Settlement 1955, November Settlement 1955, Collections to First Monday in January 1956, Delinquent on First Monday in January 1956, Total Delinquent Tax and Penalty, REMARKS.











Assessment Roll and Tax List of Real Property in the Town of Woodrow

\*Indicate Type of Property: R-Residential, C-Commercial, I-Industrial, U-Utility, F-Farm

Cass County, Minnesota, for Taxes for the Year 1954.

Table with columns: IN WHOSE NAME ASSESSED, TO WHOM TRANSFERRED, SUBDIVISION, TRUE AND FULL VALUATIONS, ASSESSED VALUATIONS, VALUATIONS BY SCHOOL DISTRICTS AS EQUALIZED BY DEPARTMENT OF TAXATION, TAXES, PAID, WHEN PAID, Number of Receipt, March Settlement 1955, June Settlement 1955, November Settlement 1955, Collections to First Monday in January 1956, Delinquent on First Monday in January 1956, Total Delinquent Tax and Penalty, REMARKS.

End of the trail 2nd add

Juanita J. Waulago

State of Minnesota

1

49

18

18

6

6

6

6

6

6

6

6

6

6

6

6

6

6

6

6

6

6

6

6

6

6

6

6

6

6

6

6

6

6

6

6

6

6

6

6

6

6

6

6

6

6

6

6

6

6

6

6

6

6

6

6

6

6

6

6

6

6

6

6

6

6

6

6

6

6

6

6

6

6

6

6

6

6

6

6

6

6

6

6

6

6

6

6

6

6

6

6

6

6

6

6

6

6

6

6

6

6

6

6

6

6

6

6

6

6

6

6

6

6

6

6

6

6

6

6

6

6

6

6

6

6

6

6

6

6

6

6

6

6

6

6

6

6

6

6

6

6

6

6

6

6

6

6

6

6

6

6

6

6

6

6

6

6

6

6

6

6

6

6

6

6

6

6

6

6

6

6

6

6

6

6

6

6

6

6

6

6

6

6

6

6

6

6

6

6

6

6

6

6

6

6

6

6

6

6

6

6

6

6

6

6

6

6

6

6

6

6

6

6

6

6

6

6

6

6

6

6

6

6

6

6

6

6

6

6

6

6

6

6

6

6

6

6

6

6

6

6

6

6

6

6

6

6

6

6

6

6

6

6

6

6

6

6

6

6

6

6

6

6

6

6

6

6

6

6

6

6

6

6

6

6

6

6

6

6

6

6

6

6

6

6

6

6

6

6

6

6

6

6

6

6

6

6

6

6

6

6

6

6

6

6

6

6

6

6

6

6

6

6

6

6

6

6

6

6

6

6

6











Assessment Roll and Tax List of Real Property in the Town of Woodrow

\*Indicate Type of Property: R-Residential, C-Commercial, I-Industrial, U-Utility, F-Farm

Table with columns: IN WHOSE NAME ASSESSED, TO WHOM TRANSFERRED, DESCRIPTION OF PROPERTY, TRUE AND FULL VALUATIONS, ASSESSED VALUATIONS, and FINAL EQUALIZED VALUE. Includes entries for State of Minnesota and individuals like David E. Pratt and John Acaster.

Cass County, Minnesota, for Taxes for the Year 1954

Table with columns: SOLD FOR TAXES, VALUATIONS BY SCHOOL DISTRICTS AS EQUALIZED BY DEPARTMENT OF TAXATION, Tax including State Homestead, State Tax on Non-Homestead, SPECIAL TAXES, TOTAL TAXES, PAID, WHEN PAID, Number of Receipt, March Settlement 1955, June Settlement 1955, Penalty, November Settlement 1955, Collections to First Monday in January 1956, Delinquent on First Monday in January 1956, Total Delinquent Tax and Penalty, REMARKS. Includes handwritten entries for payments and settlements.



Assessment Roll and Tax List of Real Property in the Town of Woodrow

\* Indicate Type of Property: R-Residential, C-Commercial, I-Industrial, U-Utility, F-Farm

Table with columns: IN WHOSE NAME ASSESSED, TO WHOM TRANSFERRED, SUBDIVISION, TRUE AND FULL VALUATIONS (LAND, BUILDINGS, MACHINERY, TOTAL), ASSESSED VALUATIONS (RURAL, ALL OTHER, MACHINERY, TOTAL), FINAL EQUALIZED VALUE.

Cass County, Minnesota, for Taxes for the Year 1954.

Table with columns: VALUATIONS BY SCHOOL DISTRICTS AS EQUALIZED BY DEPARTMENT OF TAXATION, TAX INCLUDING STATE HOMESTEAD, SPECIAL TAXES, TOTAL TAXES, PAID, WHEN PAID, Number of Receipts, March Settlement 1955, June Settlement 1955, November Settlement 1955, Collections to First Monday in January 1956, Delinquent on First Monday in January 1956, Total Delinquent Tax and Penalty, REMARKS.



Assessment Roll and Tax List of Real Property in the Town of Woodson

\*Indicate Type of Property: R-Residential, C-Commercial, I-Industrial, U-Utility, F-Farm

Table with columns: IN WHOSE NAME ASSESSED, TO WHOM TRANSFERRED, SUBDIVISION, TRUE AND FULL VALUATIONS (LAND, BUILDINGS, MACHINERY, TOTAL), ASSESSED VALUATIONS (RURAL, ALL OTHER, MACHINERY, TOTAL ASSESSED), FINAL EQUALIZED VALUE.

Cass County, Minnesota, for Taxes for the Year 1954.

Table with columns: VALUATIONS BY SCHOOL DISTRICTS AS EQUALIZED BY DEPARTMENT OF TAXATION, TAX INCLUDING STATE HOMESTEAD, SPECIAL TAXES, TOTAL TAXES, PAID, WHEN PAID, Number of Receipt, March Settlement 1955, June Settlement 1955, November Settlement 1955, Collections to First Monday in January 1956, Delinquent on First Monday in January 1956, Total Delinquent Tax and Penalty, REMARKS.



Assessment Roll and Tax List of Real Property in the Town of Woodlawn

Indicate Type of Property: R-Residential, C-Commercial, I-Industrial, U-Utility, F-Farm

Table with columns: IN WHOSE NAME ASSESSED, TO WHOM TRANSFERRED, SUBDIVISION, TRUE AND FULL VALUATIONS, ASSESSED VALUATIONS, FINAL EQUALIZED VALUE. Includes handwritten entries for Maria Critelli, Lloyd & Lita Pearson, Stanislaus & Rhoda S. Antos, Francis S. Sugowski & Thos. S. Pletka, Robert W. & Virginia V. Morgan, Frank D. & Elsie J. Danielson, Ernest S. & Florence L. Hill.

Cass County, Minnesota, for Taxes for the Year 1954.

Table with columns: SOLD FOR TAXES, VALUATIONS BY SCHOOL DISTRICTS AS EQUALIZED BY DEPARTMENT OF TAXATION, State Tax on Non-Homestead, SPECIAL TAXES, TOTAL TAXES, PAID, WHEN PAID, Number of Receipt, March Settlement 1955, June Settlement 1955, November Settlement 1955, Collections to First Monday in January 1956, Delinquent on First Monday in January 1956, Total Delinquent Tax and Penalty, REMARKS. Includes handwritten entries for Maria Critelli, Stanislaus & Rhoda S. Antos, Robert W. & Virginia V. Morgan, Frank D. & Elsie J. Danielson, Ernest S. & Florence L. Hill.



Assessment Roll and Tax List of Real Property in the Town of Woodrow, Indicate Type of Property: R-Residential, C-Commercial, I-Industrial, U-Utility, F-Farm

Table with columns: IN WHOSE NAME ASSESSED, TO WHOM TRANSFERRED, SUBDIVISION, DESCRIPTION OF PROPERTY, TRUE AND FULL VALUATIONS, ASSESSED VALUATIONS, FINAL EQUALIZED VALUE.

Cass County, Minnesota, for Taxes for the Year 1954.

Table with columns: VALUATIONS BY SCHOOL DISTRICTS AS EQUALIZED BY DEPARTMENT OF TAXATION, TAXES, PAID, WHEN PAID, Number of Receipt, March Settlement, June Settlement, November Settlement, Collections to First Monday in January, Delinquent on First Monday in January, Total Delinquent Tax and Penalty, REMARKS.































Assessment Roll and Tax List of Real Property in the Town of Woodson

Indicate Type of Property: R-Residential, C-Commercial, I-Industrial, U-Utility, F-Farm

Table with columns: IN WHOSE NAME ASSESSED, TO WHOM TRANSFERRED, SUBDIVISION, TRUE AND FULL VALUATIONS, ASSESSED VALUATIONS, FINAL EQUALIZED VALUE. Includes handwritten entries like 'Wm J + Evelyn Spain' and 'Louis F Parker'.

Cass County, Minnesota, for Taxes for the Year 1954.

Table with columns: SOLD FOR TAXES, VALUATIONS BY SCHOOL DISTRICTS AS EQUALIZED BY DEPARTMENT OF TAXATION, Tax including State Homestead, State Tax on Non-Homestead, SPECIAL TAXES, TOTAL TAXES, PAID, WHEN PAID, Number of Receipt, March Settlement 1955, June Settlement 1955, November Settlement 1955, Collections to First Monday in January 1956, Delinquent on First Monday in January 1956, Total Delinquent Tax and Penalty, REMARKS. Includes handwritten notes like '597', '206', '15900', '9260', '126', '126', '332', '126'.







Assessment Roll and Tax List of Real Property in the Town of Woodbury, Minnesota

\*Indicate Type of Property: R-Residential, C-Commercial, I-Industrial, U-Utility, F-Farm

Table with columns: IN WHOSE NAME ASSESSED, TO WHOM TRANSFERRED, DESCRIPTION OF PROPERTY, TRUE AND FULL VALUATIONS, ASSESSED VALUATIONS, and FINAL EQUALIZED VALUE. Includes handwritten entries like 'Louis F. Parker' and 'Rearrangement, End O' The Trail'.

Cass County, Minnesota, for Taxes for the Year 1954.

Table with columns: VALUATIONS BY SCHOOL DISTRICTS AS EQUALIZED BY DEPARTMENT OF TAXATION, Tax including State Homestead, State Tax on Non-Homestead, SPECIAL TAXES, TOTAL TAXES, PAID, WHEN PAID, Number of Receipt, March Settlement 1955, June Settlement 1955, Penalty, November Settlement 1955, Penalty, Collections to First Monday in January 1956, Penalty, Delinquent on First Monday in January 1956, Total Delinquent Tax and Penalty, and REMARKS.



























Assessment Roll and Tax List of Real Property in the Town of Woodrow

\*Indicate Type of Property: R-Residential, C-Commercial, I-Industrial, U-Utility, F-Farm

Table with columns: IN WHOSE NAME ASSESSED, TO WHOM TRANSFERRED, DESCRIPTION OF PROPERTY, TRUE AND FULL VALUATIONS, ASSESSED VALUATIONS, FINAL EQUALIZED VALUE. Includes rows for State of Minnesota with lot numbers 1-20 and acreage details.

Cass County, Minnesota, for Taxes for the Year 1954.

Table with columns: SOLD FOR TAXES, VALUATIONS BY SCHOOL DISTRICTS AS EQUALIZED BY DEPARTMENT OF TAXATION, Tax including State Homestead, State Tax on Non-Homestead, SPECIAL TAXES, TOTAL TAXES, PAID, WHEN PAID, Number of Receipt, March Settlement 1955, June Settlement 1955, November Settlement 1955, Collections to First Monday in January 1956, Delinquent on First Monday in January 1956, Total Delinquent Tax and Penalty, REMARKS.















Assessment Roll and Tax List of Real Property in the Town of Woodrow

Indicate Type of Property: R-Residential, C-Commercial, I-Industrial, U-Utility, F-Farm

Table with columns: IN WHOSE NAME ASSESSED, TOWN/COM TRANSFERRED, SUBDIVISION, TRUE AND FULL VALUATIONS (LAND, BUILDINGS, MACHINERY, TOTAL), ASSESSED VALUATIONS (RURAL, ALL OTHER, MACHINERY, TOTAL ASSESSED), FINAL EQUALIZED VALUE.

Cass County, Minnesota, for Taxes for the Year 1954.

Table with columns: VALUATIONS BY SCHOOL DISTRICTS AS EQUALIZED BY DEPARTMENT OF TAXATION, TAXES (SOLD FOR TAXES, District No., Rate, Mills), PAID, WHEN PAID, Number of Receipt, March Settlement 1955, June Settlement 1955, November Settlement 1955, Collections to First Monday in January 1956, Delinquent on First Monday in January 1956, Total Delinquent Tax and Penalty, REMARKS.







Assessment Roll and Tax List of Real Property in the Town of Woodrow, Cass County, Minnesota, for Taxes for the Year 1954.

Indicate Type of Property: R-Residential, C-Commercial, I-Industrial, U-Utility, F-Farm

Table with columns: IN WHOSE NAME ASSESSED, TO WHOM TRANSFERRED, DESCRIPTION OF PROPERTY, TRUE AND FULL VALUATIONS, ASSESSED VALUATIONS, FINANCIAL EQUALIZED VALUE.

State of Minnesota
State of Minnesota
State of Minnesota

Cass County, Minnesota, for Taxes for the Year 1954.

Table with columns: VALIDATIONS BY SCHOOL DISTRICTS AS EQUALIZED BY DEPARTMENT OF TAXATION, SOLD FOR TAXES, TAXES, PAID, WHEN PAID, Number of Receipt, March Settlement 1955, June Settlement 1955, November Settlement 1955, Collections to First Monday in January 1956, Delinquent on First Monday in January 1956, Total Delinquent Tax and Penalty, REMARKS.

Summary row with totals: 17, 386, 386, 386







Assessment Roll and Tax List of Real Property in the Town of Woodhouse, \*Indicate Type of Property: R-Residential, C-Commercial, I-Industrial, U-Utility, F-Farm

Cass County, Minnesota, for Taxes for the Year 1954.

Table with columns: IN WHOSE NAME ASSESSED, TO WHOM TRANSFERRED, SUBDIVISION, Sec. of Lot, Town or Block, Ring, Number of Acres of Land, No. School District, Indicate Homestead, Indicate Agricultural, Indicate Type of Property, TRUE AND FULL VALUATIONS (LAND, BUILDINGS, MACHINERY, TOTAL), ASSESSED VALUATIONS (RURAL, ALL OTHER, MACHINERY, TOTAL ASSESSED VALUE), Total Assessed Value as Equalized by the Board of Review, FINAL EQUALIZED VALUE.

Table with columns: VALUATIONS BY SCHOOL DISTRICTS AS EQUALIZED BY DEPARTMENT OF TAXATION (District No., Rate, etc.), Tax Including State Homestead, State Tax on Non-Homestead, SPECIAL TAXES, TOTAL TAXES, PAID, WHEN PAID (Month, Day, Year), Number of Receipt, March Settlement 1955, June Settlement 1955, Penalty, November Settlement 1955, Penalty, Collections to First Monday in January 1956, Penalty, Delinquent on First Monday in January 1956, Total Delinquent Tax and Penalty, REMARKS.

Interlachen Lodge, Inc. Glen's Po. Rearrangement End O' The Trail

Interlachen Lodge, Inc. Glen's Po. Rearrangement End O' The Trail







Assessment Roll and Tax List of Real Property in the Town of Woodrow

\*Indicate Type of Property: R-Residential, C-Commercial, I-Industrial, U-Utility, F-Farm

Form 5C (54) UNIFORM REPORT, MINNEAPOLIS

Table with columns: IN WHOSE NAME ASSESSED, TO WHOM TRANSFERRED, SUBDIVISION, TRUE AND FULL VALUATIONS (LAND, BUILDINGS, MACHINERY, TOTAL), ASSESSED VALUATIONS (RURAL, ALL OTHER, MACHINERY, TOTAL ASSESSED VALUE), FINAL EQUALIZED VALUE, VALUATIONS BY SCHOOL DISTRICTS AS EQUALIZED BY DEPARTMENT OF TAXATION, TAX INCLUDING STATE HOMESTEAD, STATE TAX ON NON-HOMESTEAD, SPECIAL TAXES, TOTAL TAXES, PAID, WHEN PAID, Number of Receipt, March Settlement 1955, June Settlement 1955, Penalty, November Settlement 1955, Penalty, Collections to First Monday in January 1956, Penalty, Delinquent on First Monday in January 1956, Total Delinquent Tax and Penalty, REMARKS.

Vertical text on the left edge of the page, including 'The Trail 3rd Addn.', 'Rearrangement End of The Trail', 'The Trail 2nd Addn.', 'The Trail 1st Addn.', 'The Trail 4th Addn.', 'The Trail 5th Addn.', 'The Trail 6th Addn.', 'The Trail 7th Addn.', 'The Trail 8th Addn.', 'The Trail 9th Addn.', 'The Trail 10th Addn.', 'The Trail 11th Addn.', 'The Trail 12th Addn.', 'The Trail 13th Addn.', 'The Trail 14th Addn.', 'The Trail 15th Addn.', 'The Trail 16th Addn.', 'The Trail 17th Addn.', 'The Trail 18th Addn.', 'The Trail 19th Addn.', 'The Trail 20th Addn.', 'The Trail 21st Addn.', 'The Trail 22nd Addn.', 'The Trail 23rd Addn.', 'The Trail 24th Addn.', 'The Trail 25th Addn.', 'The Trail 26th Addn.', 'The Trail 27th Addn.', 'The Trail 28th Addn.', 'The Trail 29th Addn.', 'The Trail 30th Addn.', 'The Trail 31st Addn.', 'The Trail 32nd Addn.', 'The Trail 33rd Addn.', 'The Trail 34th Addn.', 'The Trail 35th Addn.', 'The Trail 36th Addn.', 'The Trail 37th Addn.', 'The Trail 38th Addn.', 'The Trail 39th Addn.', 'The Trail 40th Addn.', 'The Trail 41st Addn.', 'The Trail 42nd Addn.', 'The Trail 43rd Addn.', 'The Trail 44th Addn.', 'The Trail 45th Addn.', 'The Trail 46th Addn.', 'The Trail 47th Addn.', 'The Trail 48th Addn.', 'The Trail 49th Addn.', 'The Trail 50th Addn.', 'The Trail 51st Addn.', 'The Trail 52nd Addn.', 'The Trail 53rd Addn.', 'The Trail 54th Addn.', 'The Trail 55th Addn.', 'The Trail 56th Addn.', 'The Trail 57th Addn.', 'The Trail 58th Addn.', 'The Trail 59th Addn.', 'The Trail 60th Addn.', 'The Trail 61st Addn.', 'The Trail 62nd Addn.', 'The Trail 63rd Addn.', 'The Trail 64th Addn.', 'The Trail 65th Addn.', 'The Trail 66th Addn.', 'The Trail 67th Addn.', 'The Trail 68th Addn.', 'The Trail 69th Addn.', 'The Trail 70th Addn.', 'The Trail 71st Addn.', 'The Trail 72nd Addn.', 'The Trail 73rd Addn.', 'The Trail 74th Addn.', 'The Trail 75th Addn.', 'The Trail 76th Addn.', 'The Trail 77th Addn.', 'The Trail 78th Addn.', 'The Trail 79th Addn.', 'The Trail 80th Addn.', 'The Trail 81st Addn.', 'The Trail 82nd Addn.', 'The Trail 83rd Addn.', 'The Trail 84th Addn.', 'The Trail 85th Addn.', 'The Trail 86th Addn.', 'The Trail 87th Addn.', 'The Trail 88th Addn.', 'The Trail 89th Addn.', 'The Trail 90th Addn.', 'The Trail 91st Addn.', 'The Trail 92nd Addn.', 'The Trail 93rd Addn.', 'The Trail 94th Addn.', 'The Trail 95th Addn.', 'The Trail 96th Addn.', 'The Trail 97th Addn.', 'The Trail 98th Addn.', 'The Trail 99th Addn.', 'The Trail 100th Addn.'

Vertical text on the right edge of the page, including 'The Trail 101st Addn.', 'The Trail 102nd Addn.', 'The Trail 103rd Addn.', 'The Trail 104th Addn.', 'The Trail 105th Addn.', 'The Trail 106th Addn.', 'The Trail 107th Addn.', 'The Trail 108th Addn.', 'The Trail 109th Addn.', 'The Trail 110th Addn.', 'The Trail 111th Addn.', 'The Trail 112th Addn.', 'The Trail 113th Addn.', 'The Trail 114th Addn.', 'The Trail 115th Addn.', 'The Trail 116th Addn.', 'The Trail 117th Addn.', 'The Trail 118th Addn.', 'The Trail 119th Addn.', 'The Trail 120th Addn.', 'The Trail 121st Addn.', 'The Trail 122nd Addn.', 'The Trail 123rd Addn.', 'The Trail 124th Addn.', 'The Trail 125th Addn.', 'The Trail 126th Addn.', 'The Trail 127th Addn.', 'The Trail 128th Addn.', 'The Trail 129th Addn.', 'The Trail 130th Addn.', 'The Trail 131st Addn.', 'The Trail 132nd Addn.', 'The Trail 133rd Addn.', 'The Trail 134th Addn.', 'The Trail 135th Addn.', 'The Trail 136th Addn.', 'The Trail 137th Addn.', 'The Trail 138th Addn.', 'The Trail 139th Addn.', 'The Trail 140th Addn.', 'The Trail 141st Addn.', 'The Trail 142nd Addn.', 'The Trail 143rd Addn.', 'The Trail 144th Addn.', 'The Trail 145th Addn.', 'The Trail 146th Addn.', 'The Trail 147th Addn.', 'The Trail 148th Addn.', 'The Trail 149th Addn.', 'The Trail 150th Addn.', 'The Trail 151st Addn.', 'The Trail 152nd Addn.', 'The Trail 153rd Addn.', 'The Trail 154th Addn.', 'The Trail 155th Addn.', 'The Trail 156th Addn.', 'The Trail 157th Addn.', 'The Trail 158th Addn.', 'The Trail 159th Addn.', 'The Trail 160th Addn.', 'The Trail 161st Addn.', 'The Trail 162nd Addn.', 'The Trail 163rd Addn.', 'The Trail 164th Addn.', 'The Trail 165th Addn.', 'The Trail 166th Addn.', 'The Trail 167th Addn.', 'The Trail 168th Addn.', 'The Trail 169th Addn.', 'The Trail 170th Addn.', 'The Trail 171st Addn.', 'The Trail 172nd Addn.', 'The Trail 173rd Addn.', 'The Trail 174th Addn.', 'The Trail 175th Addn.', 'The Trail 176th Addn.', 'The Trail 177th Addn.', 'The Trail 178th Addn.', 'The Trail 179th Addn.', 'The Trail 180th Addn.', 'The Trail 181st Addn.', 'The Trail 182nd Addn.', 'The Trail 183rd Addn.', 'The Trail 184th Addn.', 'The Trail 185th Addn.', 'The Trail 186th Addn.', 'The Trail 187th Addn.', 'The Trail 188th Addn.', 'The Trail 189th Addn.', 'The Trail 190th Addn.', 'The Trail 191st Addn.', 'The Trail 192nd Addn.', 'The Trail 193rd Addn.', 'The Trail 194th Addn.', 'The Trail 195th Addn.', 'The Trail 196th Addn.', 'The Trail 197th Addn.', 'The Trail 198th Addn.', 'The Trail 199th Addn.', 'The Trail 200th Addn.'



































Assessment Roll and Tax List of Real Property in the Town of Woodrow

\*Indicate Type of Property: R-Residential, C-Commercial, I-Industrial, U-Utility, F-Farm

Table with columns: IN WHOSE NAME ASSESSED, TO WHOM TRANSFERRED, DESCRIPTION OF PROPERTY, TRUE AND FULL VALUATIONS, ASSESSED VALUATIONS, and FINAL EQUALIZED VALUE. Includes handwritten entries for Olive Biersdorf and Albert R. ...

Cass County, Minnesota, for Taxes for the Year 1954.

Table with columns: SOLD FOR TAXES, VALUATIONS BY SCHOOL DISTRICTS AS EQUALIZED BY DEPARTMENT OF TAXATION, Tax including State Homestead, State Tax on Non-Homestead, SPECIAL TAXES, TOTAL TAXES, PAID, WHEN PAID, Number of Receipt, March Settlement 1955, June Settlement 1955, Penalty, November Settlement 1955, Penalty, Collections to First Monday in January 1956, Delinquent on First Monday in January 1956, Total Delinquent Tax and Penalty, REMARKS.











Assessment Roll and Tax List of Real Property in the Town of Woodrow

Indicate Type of Property: R-Residential, C-Commercial, I-Industrial, U-Utility, F-Farm

Table with columns: IN WHOSE NAME ASSESSED, TO WHOM TRANSFERRED, SUBDIVISION, TRUE AND FULL VALUATIONS, ASSESSED VALUATIONS, FINAL EQUALIZED VALUE.

Cass County, Minnesota, for Taxes for the Year 1954.

Table with columns: VALUATIONS BY SCHOOL DISTRICTS AS EQUALIZED BY DEPARTMENT OF TAXATION, Tax including State Homestead, State Tax on Non-Homestead, SPECIAL TAXES, TOTAL TAXES, PAID, WHEN PAID, Number of Receipt, March Settlement 1955, June Settlement 1955, November Settlement 1955, Collections to First Monday in January 1956, Delinquent on First Monday in January 1956, Total Delinquent Tax and Penalty, REMARKS.







Assessment Roll and Tax List of Real Property in the Town of Woodrow, Minnesota

\*Indicate Type of Property: R-Residential, C-Commercial, I-Industrial, U-Utility, F-Farm

Form SC (54) MILLER-BAY COMPANY, MINNEAPOLIS

Moccasin Point

Minne Tepee Portage

Minne Tepee Portage

Minne Tepee Portage

Minne Tepee Portage

Minne Tepee Portage

Minne Tepee Portage

Interl. of The Trail 3rd Adm. of The Trail Rearrangement End of The Trail

Table with columns: WHOSE NAME ASSESSED, TO WHOM TRANSFERRED, SUBDIVISION, TRUE AND FULL VALUATIONS (LAND, BUILDINGS, MACHINERY, TOTAL), ASSESSED VALUATIONS (RURAL, ALL OTHER, MACHINERY, TOTAL), FINAL EQUALIZED VALUE.

Cass County, Minnesota, for Taxes for the Year 1954

Table with columns: VALUATIONS BY SCHOOL DISTRICTS AS EQUALIZED BY DEPARTMENT OF TAXATION, TAX INCLUDING STATE HOMESTEAD, STATE TAX ON NON-HOMESTEAD, SPECIAL TAXES, TOTAL TAXES, PAID, WHEN PAID, Number of Receipt, March Settlement 1955, June Settlement 1955, November Settlement 1955, Penalty, Collections to First Monday in January 1956, Delinquent on First Monday in January 1956, Total Delinquent Tax and Penalty, REMARKS.

Vertical text on the right edge of the page, including 'Laple C. Deema Point' and 'Green Gables'.



Assessment Roll and Tax List of Real Property in the Town of Woodrow

\*Indicate Type of Property: R-Residential, C-Commercial, I-Industrial, U-Utility, F-Farm

Form 5C (54)

Table with columns: IN WHOSE NAME ASSESSED, TO WHOM TRANSFERRED, DESCRIPTION OF PROPERTY, TRUE AND FULL VALUATIONS, ASSESSED VALUATIONS, FINAL EQUALIZED VALUE.

Table with columns: VALUATIONS BY SCHOOL DISTRICTS AS EQUALIZED BY DEPARTMENT OF TAXATION, Tax including State Homestead, SPECIAL TAXES, TOTAL TAXES, PAID, WHEN PAID, Number of Receipt, March Settlement 1955, June Settlement 1955, Penalty, November Settlement 1955, Collections to First Monday in January 1956, Delinquent on First Monday in January 1956, Total Delinquent Tax and Penalty, REMARKS.

Vertical text on the left edge of the page, including 'Maple Cr. Ogema Point' and 'Green Gables'.

Vertical text on the right edge of the page, including 'Maple Cr. Ogema Point' and 'Green Gables'.



Assessment Roll and Tax List of Real Property in the Town of Woodrow

\*Indicate Type of Property: R-Residential, C-Commercial, I-Industrial, U-Utility, F-Farm

IN WHOSE NAME ASSESSED	TO WHOM TRANSFERRED	SUBDIVISION	Sec. or Lot	Town or Block	Number of Acres of Land	No. School District	Indicate Homestead Tax	Indicate Agricultural Tax	Indicate Type of Property	TRUE AND FULL VALUATIONS				ASSESSED VALUATIONS					FINAL EQUALIZED VALUE		
										LAND Exclusive of Structures and Improvements	BUILDINGS and Other Structures	MACHINERY Permanently Attached to Real Estate	TOTAL True and Full Value	RURAL		ALL OTHER		MACHINERY Permanently Attached to Real Estate		TOTAL ASSESSED VALUE	Total Assessed Value as Requested by the Board of Review
														Homestead Up to \$1,000 20%	Over \$1,000 and Non-Homestead 33 1/3%	Homestead Up to \$1,000 25%	Over \$1,000 and Non-Homestead 40%				
Archie C. & Leone M. West		Wheat Ridge No.	20	1						30			10			10					
"			21							30			10			10					
"			22							30			10			10					
"			23							30			10			10					
"			24							30	252		94			94					
H.A. & Florence Steinbrook			25							30			10			10					
"			26							30			10			10					
"			27							31	200		77			77					
"			28							30			10			10					
Catherine & Ted D. Dixon			29							30			10			10					
"			30							30			10			10					
Etta Pierard			1	2						25		5			5						
"			2							35	935		194			194					
"			3							25		5			5						
Marvin C. & Blanche N. Stanwood			4							24			8			8					
"			5							24			8			8					
"			6							24			8			8					
"			7							30			10			10					
"			8							31	380		137			137					
"			9							30			10			10					
										379	1917		230	204	442	646					

Cass County, Minnesota, for Taxes for the Year 1954.

SOLD FOR TAXES	VALUATIONS BY SCHOOL DISTRICTS AS EQUALIZED BY DEPARTMENT OF TAXATION						Tax Including State Homestead	State Tax on Non-Homestead	SPECIAL TAXES	TOTAL TAXES	PAID	WHEN PAID	Number of Receipt	March Settlement 1955	June Settlement 1955	Penalty	November Settlement 1955	Penalty	Collections to First Monday in January 1956	Penalty	Delinquent on First Monday in January 1956	Total Delinquent Tax and Penalty	REMARKS
	District No.	District No.	District No.	District No.	District No.	District No.																	
	Rate	Rate	Rate	Rate	Rate	Rate																	
1	10						230	06		236	1	PAID IN FULL MAY 31 1955											
2	10						230	06		236	2	PAID IN FULL MAY 31 1955											
3	10						230	06		236	3	PAID IN FULL MAY 31 1955	8702	1574		1574							
4	10						230	06		236	4	PAID IN FULL MAY 31 1955	15902										
5	94						2154	50		2204	5	PAID IN FULL MAY 31 1955											
6	10						230	06		236	6	PAID IN FULL MAY 31 1955											
7	10						230	06		236	7	PAID IN FULL MAY 31 1955	13146	2512									
8	77						1764	40		1804	8	PAID IN FULL MAY 31 1955											
9	10						230	06		236	9	PAID IN FULL MAY 31 1955											
10	10						230	06		236	10	PAID IN FULL FEB 28 1955	3083	236									
11	10						230	06		236	11	PAID IN FULL FEB 28 1955	3083	236									
12	4	5					114			114	12	PAID IN FULL MAY 31 1955											
13	194						4446			4446	13	PAID IN FULL MAY 31 1955	8678	4674									
14	4	5					114			114	14	PAID IN FULL MAY 31 1955											
15	8						184	04		188	15	PAID IN FULL MAY 31 1955											
16	8						184	04		188	16	PAID IN FULL MAY 31 1955											
17	8						184	04		188	17	PAID IN FULL MAY 31 1955	5705	4248									
18	10						230	06		236	18	PAID IN FULL MAY 31 1955											
19	137						3140	72		3212	19	PAID IN FULL MAY 31 1955											
20	10						230	06		236	20	PAID IN FULL MAY 31 1955											
	204						14814	240		15054				472	13008		1574						



Assessment Roll and Tax List of Real Property in the Town of Woodson

\*Indicate Type of Property: R-Residential, C-Commercial, I-Industrial, U-Utility, F-Farm

Table with columns: IN WHOSE NAME ASSESSED, TO WHOM TRANSFERRED, SUBDIVISION, DESCRIPTION OF PROPERTY, TRUE AND FULL VALUATIONS, ASSESSED VALUATIONS, FINAL EQUALIZED VALUE.

Cass County, Minnesota, for Taxes for the Year 1954.

Table with columns: SOLD FOR TAXES, VALUATIONS BY SCHOOL DISTRICTS AS EQUALIZED BY DEPARTMENT OF TAXATION, TAX INCLUDING STATE HOMESTEAD, SPECIAL TAXES, TOTAL TAXES, PAID, WHEN PAID, Number of Receipt, March Settlement 1955, June Settlement 1955, Penalty, November Settlement 1955, Penalty, Collections to First Monday in January 1956, Penalty, Delinquent on First Monday in January 1956, Total Delinquent Tax and Penalty, REMARKS.



Assessment Roll and Tax List of Real Property in the Town of Woodrow, Cass County, Minnesota, for Taxes for the Year 1954.

\*Indicate Type of Property: R-Residential, C-Commercial, I-Industrial, U-Utility, F-Farm

Table with columns: IN WHOSE NAME ASSESSED, TO WHOM TRANSFERRED, SUBDIVISION, TRUE AND FULL VALUATIONS (LAND, BUILDINGS, MACHINERY, TOTAL), ASSESSED VALUATIONS (RURAL, ALL OTHER, MACHINERY, TOTAL ASSESSED), FINAL EQUALIZED VALUE.

Table with columns: VALUATIONS BY SCHOOL DISTRICTS AS EQUALIZED BY DEPARTMENT OF TAXATION, Tax Including State Homestead, State Tax on Non-Homestead, SPECIAL TAXES, TOTAL TAXES, PAID WHEN PAID, Number of Receipt, March Settlement 1955, June Settlement 1955, Penalty, November Settlement 1955, Collections to First Monday in January 1956, Delinquent on First Monday in January 1956, Total Delinquent Tax and Penalty, REMARKS.







Assessment Roll and Tax List of Real Property in the Town of Woodrow

\*Indicate Type of Property: R-Residential, C-Commercial, I-Industrial, U-Utility, F-Farm

Table with columns: IN WHOSE NAME ASSESSED, TO WHOM TRANSFERRED, SUBDIVISION, DESCRIPTION OF PROPERTY, TRUE AND FULL VALUATIONS (LAND, BUILDINGS, MACHINERY, TOTAL), ASSESSED VALUATIONS (RURAL, ALL OTHER, MACHINERY, TOTAL), FINAL EQUALIZED VALUE.

Cass County, Minnesota, for Taxes for the Year 1954.

Table with columns: SOLD FOR TAXES, VALUATIONS BY SCHOOL DISTRICTS AS EQUALIZED BY DEPARTMENT OF TAXATION, Tax Including State Homestead, State Tax on Non-Homestead, SPECIAL TAXES, TOTAL TAXES, PAID, WHEN PAID, Number of Receipt, March Settlement 1955, June Settlement 1955, Penalty, November Settlement 1955, Penalty, Collections to First Monday in January 1956, Penalty, Delinquent on First Monday in January 1956, Total Delinquent Tax and Penalty, REMARKS.



Assessment Roll and Tax List of Real Property in the Town of Woodrow

\*Indicate Type of Property: R-Residential, C-Commercial, I-Industrial, U-Utility, F-Farm

Form 50 (54) BILLS-BAY COMPANY, MINNEAPOLIS

Table with columns: IN WHOSE NAME ASSESSED, TO WHOM TRANSFERRED, SUBDIVISION, Sec. or Lot, Town or Block, Range, Number of Acres of Land, TRUE AND FULL VALUATIONS (LAND, BUILDINGS, MACHINERY, TOTAL), ASSESSED VALUATIONS (RURAL, ALL OTHER, MACHINERY, TOTAL ASSESSED VALUE), Total Assessed Value as Equalized by the Board of Review, FINAL EQUALIZED VALUE.

802 1929 2031 4 737

741

Cass County, Minnesota, for Taxes for the Year 1954.

Table with columns: SOLD FOR TAXES, VALUATIONS BY SCHOOL DISTRICTS AS EQUALIZED BY DEPARTMENT OF TAXATION (District No., Rate, Mills), Tax including State Homestead, State Tax on Non-Homestead, SPECIAL TAXES, TOTAL TAXES, PAID, WHEN PAID, Number of Receipt, March Settlement 1955, June Settlement 1955, Penalty, November Settlement 1955, Collections to First Monday in January 1956, Delinquent on First Monday in January 1956, Total Delinquent Tax and Penalty, REMARKS.

734 741

16982 388

17370

164 17206











