

ASSESSMENT & TAX LIST - 1962

Wabedo

SUMMARY OF TAX COLLECTION

Original Levy	- - - - -	\$ 43,169.50	
Additions	- - - - -	\$ 182.92	
			\$
Abatements	- - - - -	\$ 727.72	
			\$ 42,624.70

COLLECTIONS

March Settlement	- - - - -	\$ 4152.10	
June Settlement	- - - - -	\$ 23,297.84	
November Settlement	- - - - -	\$ 11,011.41	
January Settlement	- - - - -	\$ 1,781.69	\$ 40,243.04
			\$
Over Collected	- - - - -	\$ 113.58	
Under Collected	- - - - -	\$	
Delinquent	- - - - -	\$ 2495.24	\$ 42,624.70
Total	- - - - -		\$

Real Estate

Wabado Pass
Wabado Springs
Iowa Point
Mander's Addition
Mander's Winnie Chapman Beach
Stuarts Mander's Inskia Bay

COLLECTIONS OF TAXES OF 1962 *Town of* *Halvick* OF *Halvick* CASS COUNTY, MINNESOTA

FUNDS	MARCH SETTLEMENT 1962	JUNE SETTLEMENT 1962	NOV. SETTLEMENT 1962	Amount Collected from Nov. 1962 to First Monday in Jan. 1963	REDUCTIONS	Total Reductions and Collected	BALANCE UNCOLLECTED	ADDITIONS	Total Uncollected to First Monday in January, 1963
State-Non-Homestead,	52 96	646 43	244 18	51 23					
State-Homestead,	55 45	731 29	261 68	56 83					
County Revenue,	510 11	2854 03	1341 49	2193 0					
County Road and Bridge,	318 12	1779 89	836 60	1367 6					
County Welfare,	791 18	4426 55	2080 62	3401 3					
County Bond and Interest,	217 44	1216 54	571 81	93 49					
PERA	84 14	470 78	221 28	36 18					
Co. Nurse	14 47	80 98	38 07	6 23					
C.N. Bldg.	31 81	177 97	83 66	13 68					
Town Revenue,	79 53	444 97	209 15	34 09					
Town Road and Bridge,	67 61	378 22	177 78	29 06					
Town State Loan,									
Civ. Def.	5 89	32 94	15 47	2 53					
Agric. Assn.	7 96	44 51	20 91	3 42					
School Local 1 Mill,	587 59	2583 55	1316 94	1878 1					
School Special,									
School State Loan,									
Deficiency	1 099 12	6 149 46	2890 45	472 52					
Friction	213 45	1 194 30	561 36	91 77					
Transportation	15 27	85 44	40 16	6 56					
	4 152 10	23 297 84	11011 41	17816 9					

	SCHOOL DISTRICT NO.	LOCAL 1 MILL	SPECIAL	STATE LOAN	Deficiency	C. O.	TOTALS
MARCH SETTLEMENT	School District No.						
	<i>Una</i>		48 66		168 12	32 65	249 43
	<i>Una</i>		538 93		931 00	180 80	1 650 73
Totals			587 59		1 099 12	213 45	1 900 16
JUNE SETTLEMENT	School District No.						
	<i>Una</i>		976 20		3 372 76	655 03	5 003 99
	<i>Una</i>		1 607 35		2 776 70	539 27	4 923 32
Totals			2 583 55		6 149 46	1 194 30	9 927 31
NOVEMBER SETTLEMENT	School District No.						
	<i>Una</i>		356 45		1 231 55	239 18	1 827 18
	<i>Una</i>		960 29		1 658 90	322 18	2 941 37
Totals			1 316 74		2 890 45	561 36	4 768 55
NOVEMBER to JANUARY	School District No.						
	<i>Una</i>		85 72		2 96 16	57 52	4 39 40
	<i>Una</i>		102 09		1 76 36	34 25	3 12 70
Totals			1 87 81		4 72 52	91 77	7 52 10
ADDITIONS	School District No.						
	Totals						
REDUCTIONS	School District No.						
	Totals						

Real Estate
 Macedo Pass
 Macedo Springs
 Ione Point
 Hander's Addition
 White Chapman Beach
 Stuar's Beach
 Hander's Muskis Bay

Assessment Roll and Tax List of Real Property in the Town of Habedo

Cass County, Minnesota, for Taxes for the Year 1962.

Form SCD MILLER-DAVIS CO., MINNEAPOLIS

* Indicate Type of Property: R-Residential, C-Commercial, I-Industrial, U-Utility, F-Farm, L-Lakeshore, T-Timber, M-Mineral

Real Estate

Table with columns: IN WHOSE NAME ASSESSED, DESCRIPTION OF PROPERTY, TRUE AND FULL VALUATIONS, ASSESSED VALUATIONS, and FINAL EQUALIZED VALUE. Includes handwritten entries for John A. and Janet Labaka, Lloyd H. and Lillie E. Howalter, and others.

Table with columns: VALUATIONS BY SCHOOL DISTRICTS AS EQUALIZED BY DEPARTMENT OF TAXATION, TAX INCLUDING STATE HOMESTEAD, SPECIAL TAXES, TOTAL TAXES, PAID, WHEN PAID, and REMARKS. Includes handwritten entries for tax payments and dates.

Pass Springs, Habedo, Iowa Point, Warden's Addition, Warden's Winnie Chairman Beach, Warden's Squares Beach, Warden's Mackie Bay

Assessment Roll and Tax List of Real Property in the Town of Nabedo

Form SCD MILLER-DAVIS CO., MINNEAPOLIS

* Indicate Type of Property: R-Residential, C-Commercial, I-Industrial, U-Utility, F-Farm, L-Lakeshore, T-Timber, M-Mineral

Cass County, Minnesota, for Taxes for the Year 1962.

Table with columns for IN WHOSE NAME ASSESSED, DESCRIPTION OF PROPERTY, TRUE AND FULL VALUATIONS, ASSESSED VALUATIONS, VALUATIONS BY SCHOOL DISTRICTS AS EQUALIZED BY DEPARTMENT OF TAXATION, and TAXES. Includes handwritten entries for names like Fred I. and Mary Alice Rynda, Lambert H. Stauleup, and Helenmar Lodge, Inc.

Real Estate

Pass Springs Nabedo Iowa Point Vander's Virginia Chapman Stuart's Vander's Nuckie Bay

Assessment Roll and Tax List of Real Property in the Town of Habado

Form SCD MILLER-DAVIS CO., MINNEAPOLIS

* Indicate Type of Property: R-Residential, C-Commercial, I-Industrial, U-Utility, F-Farm, L-Lakeshore, T-Timber, M-Mineral

Table with columns: IN WHOSE NAME ASSESSED, DESCRIPTION OF PROPERTY, TRUE AND FULL VALUATIONS, ASSESSED VALUATIONS, and FINAL EQUALIZED VALUE. Includes entries for S.M. and Marie Robinson and Northern Pacific Railway Company.

Cass County, Minnesota, for Taxes for the Year 1962.

Table with columns: SOLD FOR TAXES, VALUATIONS BY SCHOOL DISTRICTS AS EQUALIZED BY DEPARTMENT OF TAXATION, Tax Including State Homestead, SPECIAL TAXES, TOTAL TAXES, PAID, WHEN PAID, and REMARKS. Includes handwritten entries and calculations.

Pass Habado Springs Iowa Point Addition Beach Vander's Winnie Chairman Stuar's Beach Vander's Mankie Bay

Assessment Roll and Tax List of Real Property in the Town of Habado

Form 500 MILLER-DAVIS CO., MINNEAPOLIS

* Indicate Type of Property: R-Residential, C-Commercial, I-Industrial, U-Utility, F-Farm, L-Lakeshore, T-Timber, M-Mineral

Cass County, Minnesota, for Taxes for the Year 1962.

Table with columns: IN WHOSE NAME ASSESSED, DESCRIPTION OF PROPERTY, TRUE AND FULL VALUATIONS, ASSESSED VALUATIONS, and FINAL EQUALIZED VALUE. Includes handwritten entries for property owners like Joann D. Lynch and Robert Ford.

Table with columns: VALUATIONS BY SCHOOL DISTRICTS AS EQUALIZED BY DEPARTMENT OF TAXATION, TAXES, PAID, WHEN PAID, and REMARKS. Includes handwritten entries for tax amounts and payment dates.

Assessment Roll and Tax List of Real Property in the Town of Habedo

Form 501 MILLER-DAVIS CO., MINNEAPOLIS

* Indicate Type of Property: R-Residential, C-Commercial, I-Industrial, U-Utility, F-Farm, L-Lakeshore, T-Timber, M-Mineral

Table with columns: IN WHOSE NAME ASSESSED, DESCRIPTION OF PROPERTY, TRUE AND FULL VALUATIONS, ASSESSED VALUATIONS, and FINAL EQUALIZED VALUE. Includes handwritten entries for various property owners like Cecile A. and Jack H. Norris.

Cass County, Minnesota, for Taxes for the Year 1962.

Table with columns: VALUATIONS BY SCHOOL DISTRICTS AS EQUALIZED BY DEPARTMENT OF TAXATION, TAX INCLUDING STATE HOMESTEAD, SPECIAL TAXES, TOTAL TAXES, PAID, WHEN PAID, and REMARKS. Includes handwritten notes and calculations.

Vertical text on the right edge of the page, including 'Haberdo Springs', 'Iowa Point Addition Beach', and 'Mander's Marina Addition Beach'.

Assessment Roll and Tax List of Real Property in the Town of Habedo

Form 5CD MILLER-DAVIS CO., MINNEAPOLIS

* Indicate Type of Property: R-Residential, C-Commercial, I-Industrial, U-Utility, F-Farm, L-Lakeshore, T-Timber, M-Mineral

Table with columns: IN WHOSE NAME ASSESSED, DESCRIPTION OF PROPERTY, TRUE AND FULL VALUATIONS, ASSESSED VALUATIONS, FINAL EQUALIZED VALUE. Includes handwritten entries for Walter A. Hughes, William S. Liskey, Earl Nebendahl, Navillus Land Co., Elmer Bailey and H.L. Reynolds, Erick and Karin Hekstrom, Adolph and Alma Nelson, Carroll Miles Runions, H.A. Clark, and Carroll Miles Runions.

(cont. on next page)

Cass County, Minnesota, for Taxes for the Year 1962.

Table with columns: SOLD FOR TAXES, VALUATIONS BY SCHOOL DISTRICTS AS EQUALIZED BY DEPARTMENT OF TAXATION, Tax Including State Homestead, SPECIAL TAXES, TOTAL TAXES, PAID, WHEN PAID, Number of Receipt, March Settlement 1963, June Settlement 1963, November Settlement 1963, Collections to First Monday in January 1964, Delinquent on First Monday in January 1964, Total Delinquent Tax and Penalty, REMARKS. Includes handwritten entries for various tax payments and protest notices.

Vertical text on the right edge of the page: Habedo, Springs, Iowa Point Addition, Mandor's Beach, Winnie Chapman, Stuart's Beach, Mandor's Muskie Bay.

N ← →

LOT 8

1320'

1188'

RUNIONS

RUNIONS

11.4 ACS.

10 ACS.?

LISKEY

24 ACS.

HY. # 64

545'

125'

NEBENDAHL

NEBENDAHL

316 ACS

16 ACS.

650'

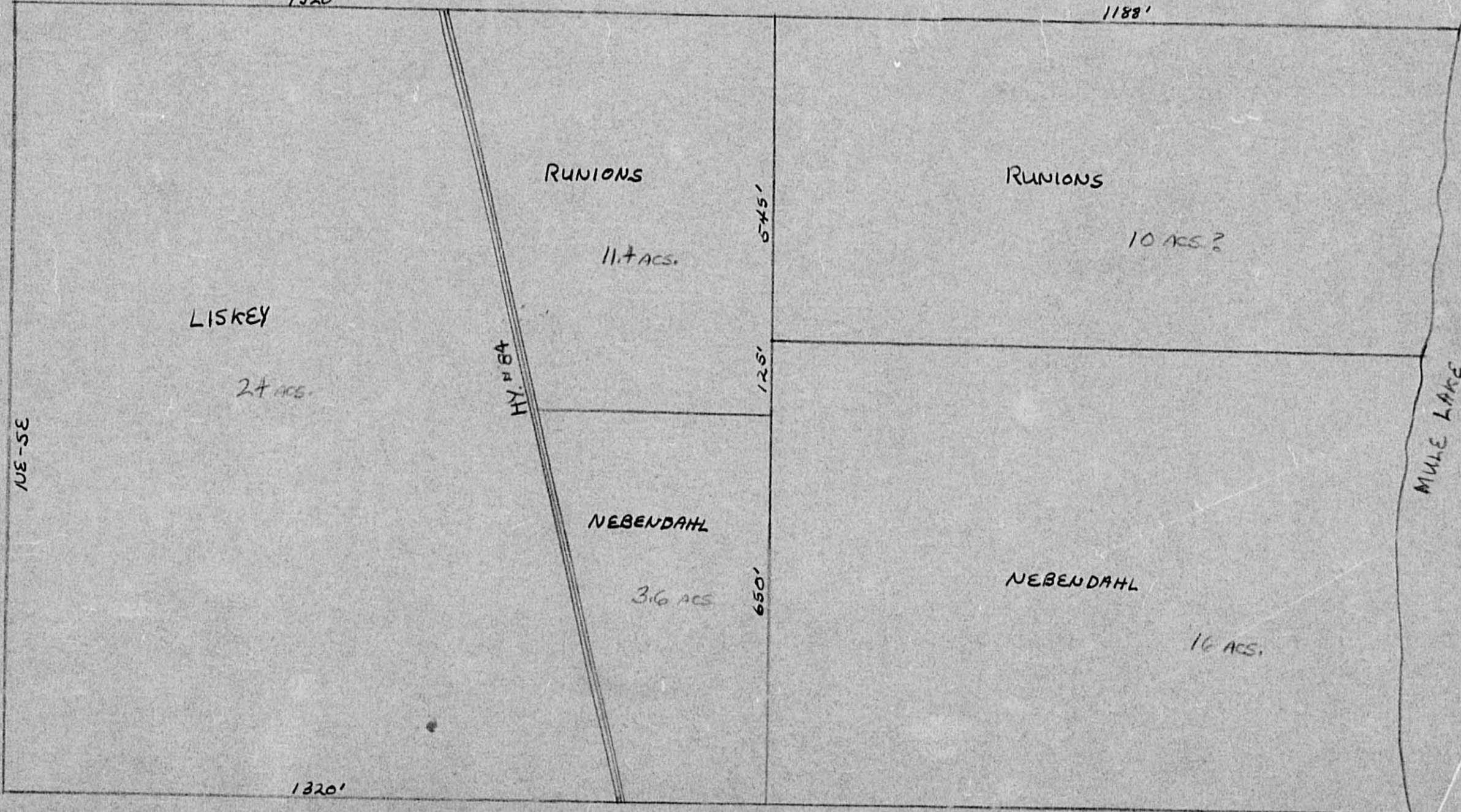
1320'

1122'

MULE LAKE

1/2E-3E/1

NE 1/4 - SE 1/4 LOT 8 - SEC. 19-140-28



Assessment Roll and Tax List of Real Property in the Town of Nabedo

Form SCD - MILLER-DAVIS CO., MINNEAPOLIS

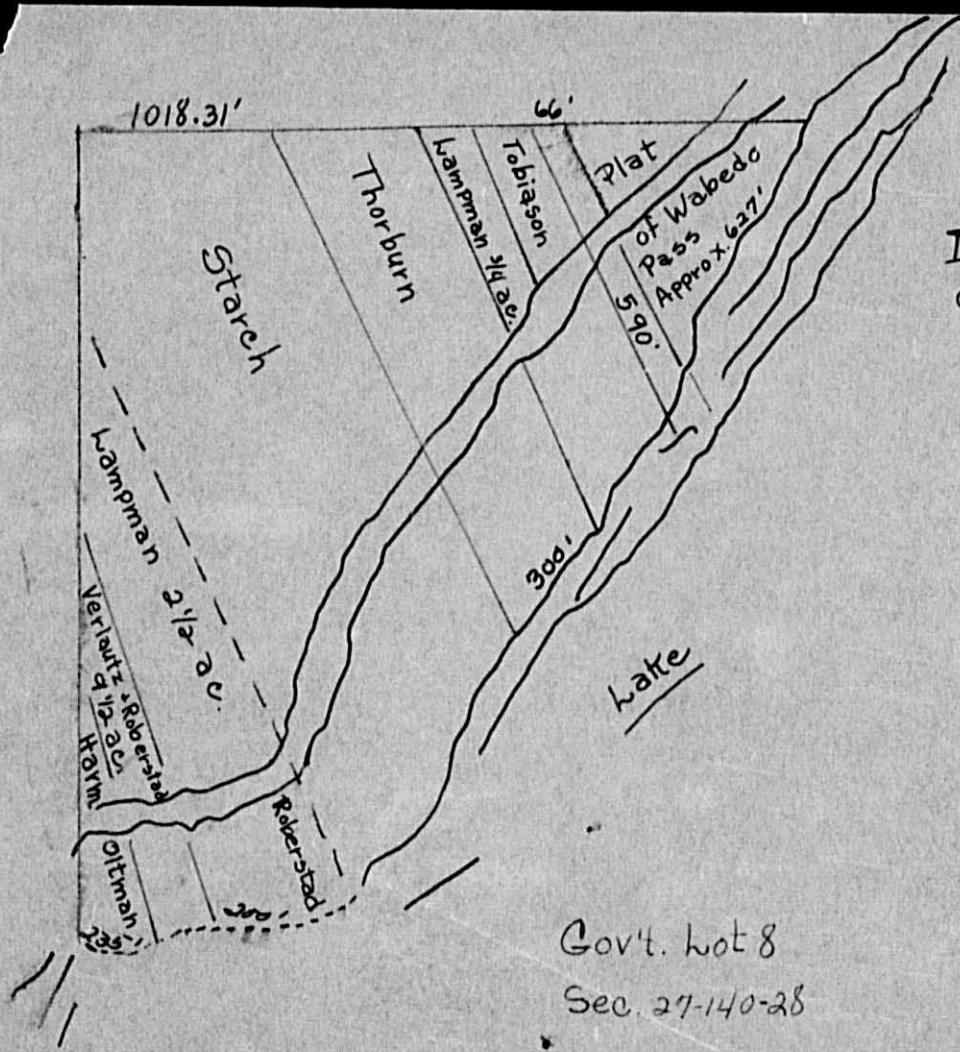
* Indicate Type of Property: R-Residential, C-Commercial, I-Industrial, U-Utility, F-Farm, L-Lakeshore, T-Timber, M-Mineral

Table with columns: IN WHOSE NAME ASSESSED, DESCRIPTION OF PROPERTY, TRUE AND FULL VALUATIONS (LAND, BUILDINGS, MACHINERY, TOTAL), ASSESSED VALUATIONS (RURAL, ALL OTHER), and FINAL EQUALIZED VALUE. Includes entries for James C. Marsh, Leslie H. Fitzsimons, Frank and Ida Becker, Merle C. and Louise H. Kirk, A. J. and Margaret Kane, Willie H. and Daisy A. Manders, George H. Marsh, and S. 300' except E. 588.3' of GOV'T LOT 5.

Cass County, Minnesota, for Taxes for the Year 1962.

Table with columns: SOLD FOR TAXES, VALUATIONS BY SCHOOL DISTRICTS AS EQUALIZED BY DEPARTMENT OF TAXATION, Tax including State Homestead, SPECIAL TAXES, TOTAL TAXES, PAID, WHEN PAID, Number of Receipt, March Settlement, June Settlement, November Settlement, Collections to First Monday in January 1964, Delinquent on First Monday in January 1964, Total Delinquent Tax and Penalty, REMARKS. Includes entries for 1-20 with various tax amounts and payment dates.

Vertical text on the right edge of the page: Nabedo, Pass Springs, Iowa Point Addition, Manders's Beach, Winnie Chapman, Manders's Beach, Manders's Muskie Bay.



Gov't. lot 8
Sec. 27-140-28

Assessment Roll and Tax List of Real Property in the Town of Habedo, Cass County, Minnesota, for Taxes for the Year 1962.

* Indicate Type of Property: R-Residential, C-Commercial, I-Industrial, U-Utility, F-Farm, L-Lakeshore, T-Timber, M-Mineral

Cass County, Minnesota, for Taxes for the Year 1962.

Wabedo Pass

Table with columns: IN WHOSE NAME ASSESSED, SUBDIVISION, Description of Property, TRUE AND FULL VALUATIONS (LAND, BUILDINGS, MACHINERY, RURAL, ALL OTHER), ASSESSED VALUATIONS, and FINAL EQUALIZED VALUE.

Table with columns: VALUATIONS BY SCHOOL DISTRICTS AS EQUALIZED BY DEPARTMENT OF TAXATION, Tax including State Homestead, State Tax on Non-Homestead, SPECIAL TAXES, TOTAL TAXES, PAID, WHEN PAID, Number of Receipt, March Settlement, June Settlement, November Settlement, Collections to First Monday in January 1964, Delinquent on First Monday in January 1964, Total Delinquent Tax and Penalty, and REMARKS.

Vertical text on the right edge of the page: Kowalewski Beach, Habedo Springs, Iowa Point Addition, Kander's, Winnie Chapman Beach, Sturtevant's Beach, Kander's, Kuster Bay.

Assessment Roll and Tax List of Real Property in the Town of Habedo, Cass County, Minnesota, for Taxes for the Year 1962.

Cass County, Minnesota, for Taxes for the Year 1962.

Form 5C MILLER-DAVIS CO., MINNEAPOLIS

* Indicate Type of Property: R-Residential, C-Commercial, I-Industrial, U-Utility, F-Farm, L-Lakeshore, T-Timber, M-Mineral

Table with columns: IN WHOSE NAME ASSESSED, DESCRIPTION OF PROPERTY, TRUE AND FULL VALUATIONS, ASSESSED VALUATIONS, VALUATIONS BY SCHOOL DISTRICTS AS EQUALIZED BY DEPARTMENT OF TAXATION, SOLD FOR TAXES, PAID, WHEN PAID, SPECIAL TAXES, TOTAL TAXES, MARCH SETTLEMENT, JUNE SETTLEMENT, NOVEMBER SETTLEMENT, COLLECTIONS TO FIRST MONDAY IN JANUARY 1964, DELINQUENT ON FIRST MONDAY IN JANUARY 1964, TOTAL DELINQUENT TAX AND PENALTY, REMARKS.

Vertical text on the left margin: Habedo Springs, Iowa Point, Mander's Addition, Chapman Beach, Mander's Muskies Bay Beach.

Vertical text on the right margin: Habedo Springs, Iowa Point, Mander's Addition, Chapman Beach, Mander's Muskies Bay Beach.

Assessment Roll and Tax List of Real Property in the Town of Habado

Form 5C MILLER-DAVIS CO., MINNEAPOLIS

* Indicate Type of Property: R-Residential, C-Commercial, I-Industrial, U-Utility, F-Farm, L-Lakeshore, T-Timber, M-Mineral

Table with columns: IN WHOSE NAME ASSESSED, DESCRIPTION OF PROPERTY, TRUE AND FULL VALUATIONS, ASSESSED VALUATIONS, and FINAL EQUALIZED VALUE. Includes handwritten entries for property owners like 'M. and Elsa A. Gene' and 'Coleman B. and Dorothy J. Austin'.

Cass County, Minnesota, for Taxes for the Year 1962.

Table with columns: VALUATIONS BY SCHOOL DISTRICTS AS EQUALIZED BY DEPARTMENT OF TAXATION, TAX INCLUDING STATE HOMESTEAD, SPECIAL TAXES, TOTAL TAXES, PAID, WHEN PAID, Number of Receipt, March Settlement 1963, June Settlement 1963, November Settlement 1963, Collections to First Monday in January 1964, Delinquent on First Monday in January 1964, Total Delinquent Tax and Penalty, and REMARKS. Includes handwritten notes and dates.

Vertical text on the left edge: Real Estate, Kowfeldt's Beach, Austin's Habado Pine Crest Acres, Lowe's Pine Crest Acres, Mander's Addition, Winnie Chapman Beach, Stuarts Beach, Mander's Muskies Bay.

Vertical text on the right edge: Personal, Mander's Broadwater Beach, Mander's Muskies Bay, Mander's Addition to Muskies Bay.

Assessment Roll and Tax List of Real Property in the _____ of _____

* Indicate Type of Property: R-Residential, C-Commercial, I-Industrial, U-Utility, F-Farm, L-Lakeshore, T-Timber, M-Mineral

Form 5C MILLER-DAVIS CO., MINNEAPOLIS

Cass County, Minnesota, for Taxes for the Year 1962.

Vertical text on the left margin: Real Estate, Howfeldt's, Island View, Mander's, Winnie Chapman, Stuaris, Mander's, Muskies Bay, Mander's, Muskies Bay.

Table with columns: IN WHOSE NAME ASSESSED, SUBDIVISION, Sec. or Lot, Town or Rng., No. of Acres, TRUE AND FULL VALUATIONS (LAND, BUILDINGS, MACHINERY, TOTAL), ASSESSED VALUATIONS (RURAL, ALL OTHER, MACHINERY, Seasonal and Recreational Cabins, TOTAL ASSESSED VALUE), Total Assessed Value as Equalized by the Board of Review, FINAL EQUALIZED VALUE.

(cont. on next page)

Table with columns: VALUATIONS BY SCHOOL DISTRICTS AS EQUALIZED BY DEPARTMENT OF TAXATION (District No., District No., District No., District No., District No., District No.), Tax Including State Homestead, State Tax on Non-Homestead, SPECIAL TAXES, TOTAL TAXES, PAID, WHEN PAID, Number of Receipt, March Settlement, June Settlement, Penalty, November Settlement, Collections to First Monday in January 1964, Delinquent on First Monday in January 1964, Total Delinquent Tax and Penalty, REMARKS.

Vertical text on the right margin: Birch, Mander's, Muskies Bay, Mander's, Muskies Bay, Personal.

