

Assessment & Tax List - 1954

Wabedo



**SUMMARY OF TAX COLLECTION**

Original Levy	- - - - -	\$ 16,669.40	
Additions	- - - - -	\$ 59.86	
			\$ 16,729.26
Abatements	- - - - -	\$ 128.60	
			\$ 16,550.66
COLLECTIONS			
March Settlement	- - - - -	\$ 3119.68	
June Settlement	- - - - -	\$ 8935.62	
November Settlement	- - - - -	\$ 3020.24	
January Settlement	- - - - -	\$ 189.50	\$ 15,265.04
			\$ .....
Over Collected	- - - - -	\$ .....	
Under Collected	- - - - -	\$ .....	
Delinquent	- - - - -	\$ 1285.62	\$ .....
Total	- - - - -		\$ 16,550.66

Maquoketa Pass  
 Maquoketa Springs  
 Iowa Point  
 Harpers Addition



COLLECTIONS OF TAXES OF 1954 OF Wabedo, CASS COUNTY, MINNESOTA

FUNDS	MARCH SETTLEMENT 1954	JUNE SETTLEMENT 1954	NOV. SETTLEMENT 1954	Amount Collected from Nov. 1954 to First Monday in Jan. 1955	REDUCTIONS	Total Reductions and Collected	BALANCE UNCOLLECTED	ADDITIONS	Total Uncollected to First Monday in January, 1955
State—Non-Homestead, State—Homestead,	70 11 53 83	178 18 163 64	51 05 54 51	4 06 3 54					
County Revenue, County Road and Bridge, County Welfare, County Bond and Interest, <i>R. &amp; B. Sinking</i>	385 00 204 21 687 41 157 09 27 39	1170 48 620 84 2084 88 477 60 832 8	389 91 206 82 696 18 157 10 277 4	25 33 13 43 45 22 10 33 1 80					
Town Revenue, Town Road and Bridge, Town Drag, Town State Loan,	63 00 134 22 13 70 31 50	191 54 408 06 416 4 95 77	63 81 135 94 13 87 31 90	4 14 8 83 9 0 2 07					
School Local 1 Mill, School Special, School State Loan, Deficiency Tuition Transportation C.O.	13 69 504 69 547 85 20 55 20 54	41 64 1020 47 166 57 62 45 62 45	13 87 391 83 554 84 20 81 20 80	9 0 18 04 36 04 1 35 1 35					
	3119 68	8935 62	3020 24	189 50					

	SCHOOL DISTRICT NO.	LOCAL 1 MILL	SPECIAL	STATE LOAN	Deficiency	Transport.	C.O.	TOTALS
MARCH SETTLEMENT	School District No. <i>A Un</i>	2 15	43 16		86 82	3 24	3 27	167 24
	School District No. <i>Na Un</i>	11 54	46 153		46 153	17 31	17 31	112 498
	Totals	13 69	50 469		547 85	20 55	20 54	1292 22
JUNE SETTLEMENT	School District No. <i>A Un</i>	31 26	64 513		1290 25	48 38	48 38	2499 86
	School District No. <i>Na Un</i>	9 38	37 534		37 532	14 07	14 07	914 85
	Totals	41 64	1020 47		1665 57	62 45	62 45	3414 71
NOVEMBER SETTLEMENT	School District No. <i>A Un</i>	8 15	163 01		326 03	12 23	12 22	631 69
	School District No. <i>Na Un</i>	5 72	228 82		228 81	8 58	8 58	557 73
	Totals	13 87	391 83		554 84	20 81	20 80	1189 41
NOVEMBER to JANUARY	School District No. <i>A Un</i>	9 0	18 04		36 04	1 35	1 35	69 85
	Totals	9 0	18 04		36 04	1 35	1 35	69 85
	ADDITIONS							
REDUCTIONS	School District No.							
	Totals							
	Totals							











Assessment Roll and Tax List of Real Property in the Town of Wabedo

\*Indicate Type of Property: R-Residential, C-Commercial, I-Industrial, U-Utility, F-Farm

Table with columns: IN WHOSE NAME ASSESSED, TO WHOM TRANSFERRED, DESCRIPTION OF PROPERTY, TRUE AND FULL VALUATIONS, ASSESSED VALUATIONS, VALUATIONS BY SCHOOL DISTRICTS AS EQUALIZED BY DEPARTMENT OF TAXATION, TAXES, PAID, WHEN PAID, Number of Receipt, March Settlement 1955, June Settlement 1955, Penalty, November Settlement 1955, Penalty, Collections to First Monday in January 1956, Penalty, Delinquent on First Monday in January 1956, Total Delinquent Tax and Penalty, REMARKS.



























Assessment Roll and Tax List of Real Property in the Town of Wabedo

\*Indicate Type of Property: R-Residential, C-Commercial, I-Industrial, U-Utility, F-Farm

Cass County, Minnesota, for Taxes for the Year 1954.

Table with columns: IN WHOSE NAME ASSESSED, TO WHOM TRANSFERRED, DESCRIPTION OF PROPERTY, TRUE AND FULL VALUATIONS, ASSESSED VALUATIONS, VALUATIONS BY SCHOOL DISTRICTS, SOLD FOR TAXES, PAID, WHEN PAID, Number of Receipt, March Settlement, June Settlement, November Settlement, Collections to First Monday in January, Delinquent on First Monday in January, Total Delinquent Tax and Penalty, REMARKS.

Wabedo Pass

Wabedo Springs

Iowa Point

Landers Addition

Rep. Bd. NR # 27856  
PDR # 27765 1-6-56







Assessment Roll and Tax List of Real Property in the Town of Wabedo, Cass County, Minnesota, for Taxes for the Year 1954.

Table with columns: IN WHOSE NAME ASSESSED, TO WHOM TRANSFERRED, DESCRIPTION OF PROPERTY, TRUE AND FULL VALUATIONS, ASSESSED VALUATIONS, VALUATIONS BY SCHOOL DISTRICTS AS EQUALIZED BY DEPARTMENT OF TAXATION, TAXES, PAID, WHEN PAID, Number of Receipt, March Settlement 1955, June Settlement 1955, Penalty, November Settlement 1955, Collections to First Monday in January 1956, Delinquent on First Monday in January 1956, Total Delinquent Tax and Penalty, REMARKS.

(Continued on next page)

Wabedo Pass, Wabedo Springs, Iowa Point, Sanders Addition

Assessment Roll and Tax List of Real Property in the Town of Wabedo, Cass County, Minnesota, for Taxes for the Year 1954.

Table with columns: IN WHOSE NAME ASSESSED, TO WHOM TRANSFERRED, DESCRIPTION OF PROPERTY, TRUE AND FULL VALUATIONS, ASSESSED VALUATIONS, FINAL EQUALIZED VALUE. Includes handwritten entries for Ansel O. + Ruth Bishop, Fred + Clotile B. Van Rheenen, Melvin + Elvira Wacker, and Edward H. + Elsie Schlanderhoff.

Cass County, Minnesota, for Taxes for the Year 1954.

Table with columns: SOLD FOR TAXES, VALUATIONS BY SCHOOL DISTRICTS AS EQUALIZED BY DEPARTMENT OF TAXATION, SPECIAL TAXES, TOTAL TAXES, PAID, WHEN PAID, Number of Receipt, March Settlement 1955, June Settlement 1955, Penalty, November Settlement 1955, Penalty, Collections to First Monday in January 1956, Penalty, Delinquent on First Monday in January 1956, Total Delinquent Tax and Penalty, REMARKS. Includes handwritten entries for tax amounts and a 'PAID IN FULL' note.

Assessment Roll and Tax List of Real Property in the Town of Wabedo

\*Indicate Type of Property: R-Residential, C-Commercial, I-Industrial, U-Utility, F-Farm

Cass County, Minnesota, for Taxes for the Year 1954.

Form SCID (54) MILLER-DAY COMPANY, MINNEAPOLIS

Main table with columns: IN WHOSE NAME ASSESSED, TO WHOM TRANSFERRED, DESCRIPTION OF PROPERTY, TRUE AND FULL VALUATIONS, ASSESSED VALUATIONS, FINAL EQUALIZED VALUE, VALUATIONS BY SCHOOL DISTRICTS AS EQUALIZED BY DEPARTMENT OF TAXATION, TAXES, PAID, WHEN PAID, etc.

Wabedo Pass

Wabedo Springs

Iowa Point

Handers Addition

Assessment Roll and Tax List of Real Property in the Town of Wabedo,  
\*Indicate Type of Property: R-Residential, C-Commercial, I-Industrial, U-Utility, F-Farm

Form SCD (54) - MILLER-DAVIS COMPANY, MINNEAPOLIS

IN WHOSE NAME ASSESSED	TO WHOM TRANSFERRED	DESCRIPTION OF PROPERTY				No. School District	Indicate Home-Stead Yes or No	Indicate Agricultural Yes or No	Indicate Type of Property	TRUE AND FULL VALUATIONS				ASSESSED VALUATIONS					FINAL EQUALIZED VALUE
		SUBDIVISION	Sec. or Lot	Town or Block	Rng					Number of Acres of Land	TOTAL True and Full Value	RURAL		ALL OTHER		MACHINERY Permanently Attached to Real Estate	TOTAL ASSESSED VALUE	Total Assessed Value as Equalized by the Board of Review	
												Acres	100ths	Homestead Up to \$4,000 20%	Over \$4,000 and Non-Homestead 33 1/3%				
Frank E + Helen B. Barger		NE 1/4 of NE 1/4 Lot 7	22	140	28	34	75	ac	70	yes	L	360	144	504	168	168			
Thomas J + Mae Rose McKewer		S. 580' of Lot 7																	
Louis E. Westling		W. 560' of that part of Lot 6 which lies S. of 130' of W. 560' of Lot 6 which lies S. of E. 130' of W. 560' of Lot 6 south of Rd. Sec. 22, T. 140 N., R. 28 W., 100'										90		90	30	30			
Louis E. + Inez L. Westling		SE 1/4 of NE 1/4										120	800	920	184	184			
Herman P. + Euletha S. Peschken		150' of Lot 5 N. of road				1						29	550	579	193	193			
Lyle N. + Helen Craddock		NE 1/4 of NW 1/4 Lot 1 less 1/4 sec. to Wabedo sup	31									495	950	2444	289	333	622		
State of Minnesota		NW 1/4 of NW 1/4																	
State of Minnesota		SW 1/4 of NW 1/4																	
Lyle N. + Helen Craddock		SE 1/4 of NW 1/4 Lot 2				33						395		395	79	79			
Sigfred + Helen Anderson		Lot 6 N. of road				16	50					249	300	549	183	183			
Ray F. Mace		NE 1/4 of SW 1/4 Lot 3				39						480	210	690	230	230			
"		NW 1/4 of SW 1/4				40						270		270	90	90			
Wm C. + Louise O. Sampson		SW 1/4 of SW 1/4				40						270		270	54	54			
"		Lot 4 less platted 1/4 sec				29	38					450	300	1749	150	333	483		
"		SE 1/4 of SW 1/4 15' of unplatted part																	
L. B. Castle		75' of Lot 4				2	27					60	261	321	107	107			
Louis M. + Ruth P. Howser		All N. of road of Lot 3 less 150'				10	50					150	575	725	145	50	195		
Paul + Clara E. Weaver		All S. of road of Lot 5 less 120'				38	50					500	700	2100	240	300	540		
Wm C. + Louise O. Sampson		250' x 230' x 173' along lake of Lot 5				1						100		100	20	20			
Harold Laverne + Hazel Esther Luper		Lot 6 S. of road less W. 560' part of Lot 6				7						165	430	1195	119	200	319		
Wabedo Sup.		1 acre of Lot 1																	
Edward William Morris + Marjorie Morris		100' of Lot 6, being W. 560'				32	3	90				4183	8868	13051	1080	2217	3497		
Ed D. Erickson + Lavonne S. Greder		100' of Lot 6																	

Cass County, Minnesota, for Taxes for the Year 1954.

SOLD FOR TAXES	VALUATIONS BY SCHOOL DISTRICTS AS EQUALIZED BY DEPARTMENT OF TAXATION						Tax Including State Homestead	State Tax on Non-Homestead	SPECIAL TAXES	TOTAL TAXES	PAID	WHEN PAID	Number of Receipt	March Settlement 1955	June Settlement 1955	Penalty	November Settlement 1955	Penalty	Collections to First Monday in January 1956	Penalty	Delinquent on First Monday in January 1956	Total Delinquent Tax and Penalty	REMARKS
	District No.	District No.	District No.	District No.	District No.	District No.																	
	Rate	Rate	Rate	Rate	Rate	Rate																	
1											1st Half Paid MAY 31 1955	12015		1723									
											2nd Half Paid OCT 31 1955	15936											
2																							
3																							
4																							
5																							
6																							
7																							
8																							
9																							
10																							
11																							
12																							
13																							
14																							
15																							
16																							
17																							
18																							
19																							
20																							

Wabedo Pass

Wabedo Springs

Iowa Point

Handers Addition

9.40 Abated

9.40 Abate.

Assessment Roll and Tax List of Real Property in the Town of Wabedo

\*Indicate Type of Property: R-Residential, C-Commercial, I-Industrial, U-Utility, F-Farm

Form SCD (54) - WILSON-DAVIS COMPANY, MINNEAPOLIS

Table with columns: IN WHOSE NAME ASSESSED, TO WHOM TRANSFERRED, DESCRIPTION OF PROPERTY, TRUE AND FULL VALUATIONS, ASSESSED VALUATIONS, FINAL EQUALIZED VALUE. Includes entries for State of Minnesota and various individuals like Thomas J. + Mrs. Rose McKeever.

(Continued on next page)

Cass County, Minnesota, for Taxes for the Year 1954.

Table with columns: VALUATIONS BY SCHOOL DISTRICTS AS EQUALIZED BY DEPARTMENT OF TAXATION, Tax including State Homestead, SPECIAL TAXES, TOTAL TAXES, PAID, WHEN PAID, Number of Receipt, March Settlement 1955, June Settlement 1955, Penalty, November Settlement 1955, Penalty, Collections to First Monday in January 1956, Penalty, Delinquent on First Monday in January 1956, Total Delinquent Tax and Penalty, REMARKS. Includes entries for State of Minnesota and various individuals.

Handwritten calculations: 124 = 124, 651 = 1668, 775 = 1792, 17500, 20930, 38430, 870, 39300

Wabedo Pass, Wabedo Springs, Iowa Point, Handers Addition

Assessment Roll and Tax List of Real Property in the Town of Wabedo

\*Indicate Type of Property: R-Residential, C-Commercial, I-Industrial, U-Utility, F-Farm

Form SCD (51) MILLER-DAY COMPANY, MINNEAPOLIS

IN WHOSE NAME ASSESSED	TO WHOM TRANSFERRED	DESCRIPTION OF PROPERTY				No. School District	Indicate Homestead Yes or No	Indicate Agricultural Yes or No	Indicate Type of Property	TRUE AND FULL VALUATIONS				ASSESSED VALUATIONS					FINAL EQUALIZED VALUE			
		SUBDIVISION	Sec. or Lot	Town or Block	Rug					Number of Acres of Land	LAND Exclusive of Structures and Improvements	BUILDINGS and Other Structures	MACHINERY Permanently Attached to Real Estate	TOTAL True and Full Value	RURAL		ALL OTHER			MACHINERY Permanently Attached to Real Estate	TOTAL ASSESSED VALUE	Total Assessed Value as Equalized by the Board of Review
															Acres	100ths	Homestead Up to \$4,000 20%	Over \$4,000 and Non-Homestead 33 1/3%				
August Gordon		W 1/2 of Lot 4 lying south of NE 1/4 of NE 1/4 Co. Rd.	33	140	28	120	Res	R	60	325			385	77		77						
		NE 1/4 of NE 1/4																				
		SW 1/4 of NE 1/4																				
Earl E. + Winnie B. Chapman Theodore H. Jensen + Edith V. Hansen		SE 1/4 of NE 1/4 that part of the W 1/2 of Lot 4 lying and being 1/2 of the W 1/2 of Lot 4 + so. 1/2 Co. road				50	No	L	60	300			360	120		120						
		NE 1/4 of NW 1/4																				
		NW 1/4 of NW 1/4																				
		SW 1/4 of NW 1/4																				
		SE 1/4 of NW 1/4																				
Beit + Margaret Allen Albin W. + Martha W. Olson		4 acs of Lot 5				40	No	R	15	150			165	55		55						
		NE 1/4 of SW 1/4																				
		NW 1/4 of SW 1/4																				
		SW 1/4 of SW 1/4																				
		SE 1/4 of SW 1/4																				
Howard + Verna Claussen		1 acre of Lot 5				1	No	R	30	300			330	110		110						
		NE 1/4 of SE 1/4																				
		NW 1/4 of SE 1/4																				
		SW 1/4 of SE 1/4																				
		SE 1/4 of SE 1/4																				
Willetts + Bernice H. Moile Edward W. + Marjorie Morris		57 acs. of Lot 5				57	yes	R	30	500			530	106		106						
		SW 1/4 of SE 1/4																				
		SE 1/4 of SE 1/4																				
						367			195	1575			1770	183	285	468						

Cass County, Minnesota, for Taxes for the Year 1954.

SOLD FOR TAXES	VALUATIONS BY SCHOOL DISTRICTS AS EQUALIZED BY DEPARTMENT OF TAXATION						Tax including State Homestead	State Tax on Non-Homestead	SPECIAL TAXES	TOTAL TAXES	PAID	WHEN PAID	Number of Receipt	March Settlement 1955	June Settlement 1955	Penalty	November Settlement 1955	Penalty	Collections to First Monday in January 1956	Penalty	Delinquent on First Monday in January 1956	Total Delinquent Tax and Penalty	REMARKS
	District No.	District No.	District No.	District No.	District No.	District No.																	
	Rate	Rate	Rate	Rate	Rate	Rate																	
1	# 77						1584		1584														
2																							
3																							
4																							
5	120						2470	62	2532														
6																							
7																							
8																							
9																							
10	66						1132	28	1160														
11																							
12																							
13																							
14																							
15	110						2264	58	2322														
16																							
17	# 106						2182		2182														
18																							
19																							
20	# 183 285 468						9632	148	9780														

Wabedo Pass

Wabedo Springs

Iowa Point

Handers Addition







Assessment Roll and Tax List of Real Property in the Town of Wabedo, Minnesota

Table with columns: IN WHOSE NAME ASSESSED, TO WHOM TRANSFERRED, DESCRIPTION OF PROPERTY, TRUE AND FULL VALUATIONS, ASSESSED VALUATIONS, VALUATIONS BY SCHOOL DISTRICTS AS EQUALIZED BY DEPARTMENT OF TAXATION, TAXES, PAID, WHEN PAID, Number of Receipt, March Settlement 1955, June Settlement 1955, November Settlement 1955, Collections to First Monday in January 1956, Delinquent on First Monday in January 1956, Total Delinquent Tax and Penalty, REMARKS.

Wabedo Pass, Wabedo Springs, Iowa Point, Landers Addition

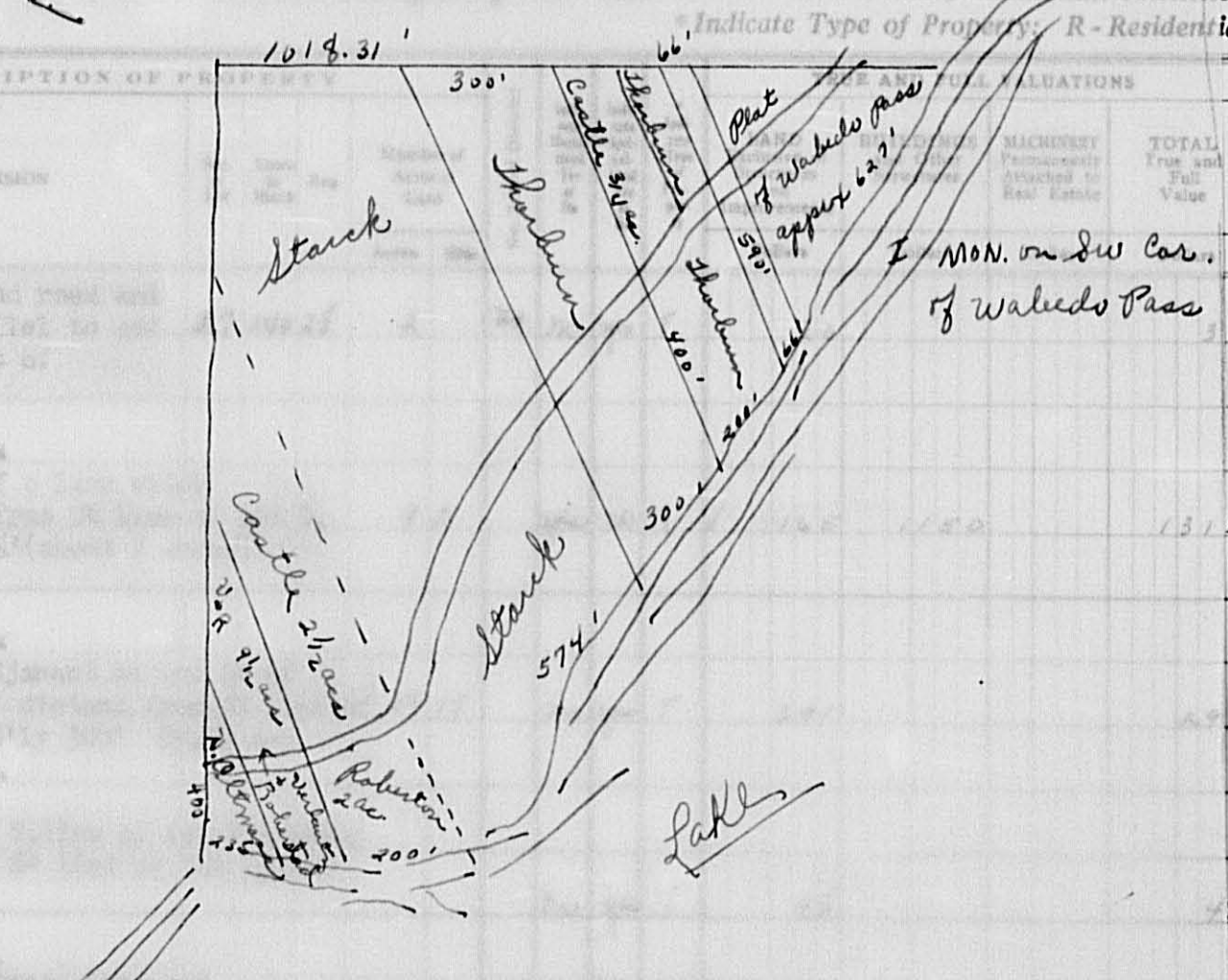


Assessment Roll and Tax List of Real Property in the Town of Wabedo

Indicate Type of Property: R-Residential, C-Commercial, I-Industrial, U-Utility, F-Farm

Form 5CD (54) ILLINOIS SALES TAX, SPRINGFIELD

IN WHOSE NAME ASSESSED	TO WHOM TRANSFERRED	SUBDIVISION	DESCRIPTION OF PROPERTY	ASSESSED VALUATIONS						TOTAL ASSESSED VALUE	Total Assessed Value as Equalized by the Board of Review	FINAL EQUALIZED VALUE
				RURAL		ALL OTHER		MACHINERY Permanently Attached to Real Estate 33 1/3%	TOTAL ASSESSED VALUE			
				Homestead Up to \$4,000 20%	Over \$4,000 and Non-Homestead 33 1/3%	Homestead Up to \$4,000 25%	Over \$4,000 and Non-Homestead 40%					
Halvor Robberstad	Strip 200' wide of Lot 8 between lake lying adjacent to and S" of a line parallel to and 1140' distant from SW line of Lot 1, Plat of Wabedo Pass.								10	10		
Verlantz & Robberstad	All that part of Lot 8 lying SW is parallel to and 1340' distant from SW line of Lot 1, Plat of Wabedo Pass. Less the W. 9.5'							263	263			
Adolph E. & Effie L. Starck	A strip 874' wide of Lot 8, lying extended line parallel to and 266' from SW line of Lot 1, Plat of Wabedo Pass, Less 8' SW 1/4 of N							97	97			
Lloyd M. & Rose Tharburn	A strip 300' wide between lake parallel to & 266' from extended line of Wabedo Pass.							16	16			
Lloyd M. & Rose Tharburn	Strip 200' wide of lot 8 lying between road, and being parallel to and 1140' distant from SW line of Lot 1, Plat of Wabedo Pass. 1140' wide of lot 8 lying between road of lot 8 and being parallel to extended SW line of lot 1, Plat of Wabedo Pass.							229	229			
Bin Castle	Strip 100' wide of lot 8 lying between road and being parallel to extended SW line of lot 1, Plat of Wabedo Pass. Strip 200' wide of lot 8 between road and west line of Lot 8 and lying adjacent to and SW of an extended line parallel to and 1140' distant from SW line of Lot 1, Plat of Wabedo Pass.							20	20			
Harm Ottmans	The west 235' of Lot 8, 27-140-28 extended from Wabedo Lake on the south and running North approximately 400' to the pot hole, containing 2 acres more or less.							287	287			



Cass County, Minnesota, for Taxes for the Year 1954.

SOLD FOR TAXES	VALUATIONS BY SCHOOL DISTRICTS AS EQUALIZED BY DEPARTMENT OF TAXATION						Tax including State Homestead	State Tax on Non-Homestead	SPECIAL TAXES	TOTAL TAXES	PAID	WHEN PAID	Number of Receipt	March Settlement 1955	June Settlement 1955	Penalty	November Settlement 1955	Penalty	Collections to First Monday in January 1956	Penalty	Delinquent on First Monday in January 1956	Total Delinquent Tax and Penalty	REMARKS
	District No.	District No.	District No.	District No.	District No.	District No.																	
	Rate	Rate	Rate	Rate	Rate	Rate																	
1							206	06	212	PAID IN FULL	MAY 31 1955	2037											
2																							
3																							
4							5938		5938	PAID IN FULL	MAY 31 1955	12037											
5																							
6																							
7							1996	50	2046	PAID IN FULL	MAY 31 1955	12039											
8																							
9																							
10							330	08	338	PAID IN FULL	MAY 31 1955	12031											
11																							
12							4714	120	4834	PAID IN FULL	MAY 31 1955	12031											
13																							
14																							
15																							
16																							
17	SOLD FOR TAXES						412	10	422	PAID IN FULL	JUN 20 1955	8273											
18																							
19																							
20							287		5906														
							659		5938														
							659		13564														
							659		19502														

Wabedo Pass, Wabedo Springs, Iowa Point, Handers Addition



Assessment Roll and Tax List of Real Property in the Town of Wabedo

\*Indicate Type of Property: R-Residential, C-Commercial, I-Industrial, U-Utility, F-Farm

Form 50D (54)

Table with columns: IN WHOSE NAME ASSESSED, TO WHOM TRANSFERRED, DESCRIPTION OF PROPERTY, TRUE AND FULL VALUATIONS, ASSESSED VALUATIONS, and FINAL EQUALIZED VALUE.

Cass County, Minnesota, for Taxes for the Year 1954.

Table with columns: VALUATIONS BY SCHOOL DISTRICTS AS EQUALIZED BY DEPARTMENT OF TAXATION, TAXES, PAID, WHEN PAID, Number of Receipt, March Settlement 1955, June Settlement 1955, November Settlement 1955, Penalty, Collections to First Monday in January 1956, Delinquent on First Monday in January 1956, Total Delinquent Tax and Penalty, and REMARKS.

Wabedo Pass, Wabedo Springs, Iowa Point, Sanders Addition



Assessment Roll and Tax List of Real Property in the Town of Wabedo

\*Indicate Type of Property: R-Residential, C-Commercial, I-Industrial, U-Utility, F-Farm

Table with columns: IN WHOSE NAME ASSESSED, TO WHOM TRANSFERRED, DESCRIPTION OF PROPERTY, TRUE AND FULL VALUATIONS, ASSESSED VALUATIONS, FINAL EQUALIZED VALUE.

Cass County, Minnesota, for Taxes for the Year 1954.

Table with columns: VALUATIONS BY SCHOOL DISTRICTS AS EQUALIZED BY DEPARTMENT OF TAXATION, Tax including State Homestead, State Tax on Non-Homestead, SPECIAL TAXES, TOTAL TAXES, PAID, WHEN PAID, Number of Receipt, March Settlement 1955, June Settlement 1955, Penalty, November Settlement 1955, Penalty, Collections to First Monday in January 1956, Penalty, Delinquent on First Monday in January 1956, Total Delinquent Tax and Penalty, REMARKS.



Assessment Roll and Tax List of Real Property in the Town of Wabedo

\*Indicate Type of Property: R-Residential, C-Commercial, I-Industrial, U-Utility, F-Farm

Cass County, Minnesota, for Taxes for the Year 1954.

Table with columns: IN WHOSE NAME ASSESSED, TO WHOM TRANSFERRED, DESCRIPTION OF PROPERTY, TRUE AND FULL VALUATIONS, ASSESSED VALUATIONS, VALUATIONS BY SCHOOL DISTRICTS AS EQUALIZED BY DEPARTMENT OF TAXATION, SOLD FOR TAXES, SPECIAL TAXES, TOTAL TAXES, PAID, WHEN PAID, Number of Receipt, March Settlement 1955, June Settlement 1955, Penalty, November Settlement 1955, Penalty, Collections to First Monday in January 1956, Penalty, Delinquent on First Monday in January 1956, Total Delinquent Tax and Penalty, REMARKS.

Assessment Roll and Tax List of Real Property in the Town of Wabedo

\*Indicate Type of Property: R-Residential, C-Commercial, I-Industrial, U-Utility, F-Farm

Cass County, Minnesota, for Taxes for the Year 1954.

Table with columns: IN WHOSE NAME ASSESSED, TO WHOM TRANSFERRED, DESCRIPTION OF PROPERTY, TRUE AND FULL VALUATIONS, ASSESSED VALUATIONS, VALUATIONS BY SCHOOL DISTRICTS AS EQUALIZED BY DEPARTMENT OF TAXATION, TAXES, PAID, WHEN PAID, Number of Receipt, March Settlement 1955, June Settlement 1955, November Settlement 1955, Collections to First Monday in January 1956, Delinquent on First Monday in January 1956, Total Delinquent Tax and Penalty, REMARKS.

Assessment Roll and Tax List of Real Property in the Town of Wabedo, Minnesota

Table with columns: IN WHOSE NAME ASSESSED, TO WHOM TRANSFERRED, DESCRIPTION OF PROPERTY, TRUE AND FULL VALUATIONS, ASSESSED VALUATIONS, VALUATIONS BY SCHOOL DISTRICTS AS EQUALIZED BY DEPARTMENT OF TAXATION, TAXES, PAID, WHEN PAID, Number of Receipt, March Settlement 1955, June Settlement 1955, Penalty, November Settlement 1955, Penalty, Collections to First Monday in January 1956, Penalty, Delinquent on First Monday in January 1956, Total Delinquent Tax and Penalty, REMARKS.

Handwritten names and addresses: Harry Minnie B. & June E. Engelhart, Earl & Beatrice E. Griggs, Ankar B. & Margaret B. Harbo, Genevieve M. Carthy, Wm. Sam Babcock & Eva Babcock, Hemmingway & Donald M. Dore, Glenn O. Sasore, Harry E. Juske, Peter A. Frypell, Glenn & Hazel Sasore, Corwin K. & Dorothea Felton

Vertical text on the right edge: Wabedo Pass, Wabedo Springs, Iowa Point, Landers Addition





Assessment Roll and Tax List of Real Property in the Town of Wabedo, \*Indicate Type of Property: R-Residential, C-Commercial, I-Industrial, U-Utility, F-Farm

Cass County, Minnesota, for Taxes for the Year 1954.

Table with columns: IN WHOSE NAME ASSESSED, TO WHOM TRANSFERRED, DESCRIPTION OF PROPERTY, TRUE AND FULL VALUATIONS, ASSESSED VALUATIONS, VALUATIONS BY SCHOOL DISTRICTS AS EQUALIZED BY DEPARTMENT OF TAXATION, SOLD FOR TAXES, PAID, WHEN PAID, Number of Receipt, March Settlement 1955, June Settlement 1955, November Settlement 1955, Collections to First Monday in January 1956, Delinquent on First Monday in January 1956, Total Delinquent Tax and Penalty, REMARKS.

Assessment Roll and Tax List of Real Property in the \_\_\_\_\_ of \_\_\_\_\_,
\*Indicate Type of Property: R-Residential, C-Commercial, I-Industrial, U-Utility, F-Farm

Form 50D (54) - MILLER-GAYNE COMPANY, MINNEAPOLIS

Table with columns: IN WHOSE NAME ASSESSED, TO WHOM TRANSFERRED, DESCRIPTION OF PROPERTY, TRUE AND FULL VALUATIONS, ASSESSED VALUATIONS, FINAL EQUALIZED VALUE.

Cass County, Minnesota, for Taxes for the Year 1954.

Table with columns: SOLD FOR TAXES, VALUATIONS BY SCHOOL DISTRICTS AS EQUALIZED BY DEPARTMENT OF TAXATION, Tax including State Homestead, State Tax on Non-Homestead, SPECIAL TAXES, TOTAL TAXES, PAID, WHEN PAID, Number of Receipt, March Settlement 1955, June Settlement 1955, Penalty, November Settlement 1955, Penalty, Collections to First Monday in January 1956, Delinquent on First Monday in January 1956, Total Delinquent Tax and Penalty, REMARKS.

Tabedo Pass, Tabedo Springs, Iowa Point, Sanders Addition







Assessment Roll and Tax List of Real Property in the Town of Wabedo

\*Indicate Type of Property: R-Residential, C-Commercial, I-Industrial, U-Utility, F-Farm

Form 5C (54) WISCONSIN COURT REPORTERS ASSOCIATION

Table with columns: IN WHOSE NAME ASSESSED, TO WHOM TRANSFERRED, SUBDIVISION, DESCRIPTION OF PROPERTY, TRUE AND FULL VALUATIONS, ASSESSED VALUATIONS, FINAL EQUALIZED VALUE.

Cass County, Minnesota, for Taxes for the Year 1954.

Table with columns: SOLD FOR TAXES, VALUATIONS BY SCHOOL DISTRICTS AS EQUALIZED BY DEPARTMENT OF TAXATION, Tax including State Homestead, State Tax on Non-Homestead, SPECIAL TAXES, TOTAL TAXES, PAID, WHEN PAID, Number of Receipt, March Settlement 1955, June Settlement 1955, Penalty, November Settlement 1955, Collections to First Monday in January 1956, Delinquent on First Monday in January 1956, Total Delinquent Tax and Penalty, REMARKS.

Wabedo Springs

Iowa Point  
Henders Addition

Assessment Roll and Tax List of Real Property in the Town of Wabedo,  
\*Indicate Type of Property: R-Residential, C-Commercial, I-Industrial, U-Utility, F-Farm

Form 50 (54) MILLER-SAYRE COMPANY, MINNEAPOLIS

IN WHOSE NAME ASSESSED	TO WHOM TRANSFERRED	DESCRIPTION OF PROPERTY					TRUE AND FULL VALUATIONS										FINAL EQUALIZED VALUE	
		SUBDIVISION	Sec. or Lot	Town or Block	Rng	Number of Acres of Land	LAND Exclusive of Structures and Improvements	BUILDINGS and Other Structures	MACHINERY Permanently Attached to Real Estate	TOTAL True and Full Value	RURAL		ALL OTHER		MACHINERY Permanently Attached to Real Estate	TOTAL ASSESSED VALUE		Total Assessed Value as Equalized by the Board of Review
											Acres	100ths	Homestead Up to \$4,000 20%	Over \$4,000 and Non-Homestead 33 1/3%				
Harry + Missie B. Engelhart		Sowa Point (pt 1 sec. 33-140-28)	1	1						21					7	7		
			2	2						21					7	7		
			3	3							21					7	7	
			4	4							21					7	7	
			5	5							21					7	7	
			6	6				61	1250		1311		437			437		
			7	7							21					7	7	
			8	8							21					7	7	
			9	9							21					7	7	
			10	10							21					7	7	
11																		
12																		
13																		
14																		
15																		
16																		
17																		
18																		
19																		
20																		
									250	1250			1500	500		500		

Cass County, Minnesota, for Taxes for the Year 1954.

SOLD FOR TAXES	VALUATIONS BY SCHOOL DISTRICTS AS EQUALIZED BY DEPARTMENT OF TAXATION						Tax including State Homestead	State Tax on Non-Homestead	SPECIAL TAXES	TOTAL TAXES	PAID	WHEN PAID	Number of Receipt	March Settlement 1955	June Settlement 1955	Penalty	November Settlement 1955	Penalty	Collections to First Monday in January 1956	Penalty	Delinquent on First Monday in January 1956	Total Delinquent Tax and Penalty	REMARKS
	District No.	District No.	District No.	District No.	District No.	District No.																	
	Rate	Rate	Rate	Rate	Rate	Rate																	
1						7	158	04	162	1	PAID IN FULL	MAY 31 1955											
2						7	158	04	162	2	PAID IN FULL	MAY 31 1955											
3						7	158	04	162	3	PAID IN FULL	MAY 31 1955											
4						7	158	04	162	4	PAID IN FULL	MAY 31 1955											
5						7	158	04	162	5	PAID IN FULL	MAY 31 1955											
6						437	98.68	228	100.96	6	PAID IN FULL	MAY 31 1955											
7						7	158	04	162	7	PAID IN FULL	MAY 31 1955											
8						7	158	04	162	8	PAID IN FULL	MAY 31 1955											
9						7	158	04	162	9	PAID IN FULL	MAY 31 1955											
10						7	158	04	162	10	PAID IN FULL	MAY 31 1955											
11										11													
12										12													
13										13													
14										14													
15										15													
16										16													
17										17													
18										18													
19										19													
20										20													
						500	112.90	264	115.54														

Wabedo Pass

Wabedo Springs

Iowa Point

Landers Addition

Assessment Roll and Tax List of Real Property in the Town of Wabedo, Minnesota

\*Indicate Type of Property: R-Residential, C-Commercial, I-Industrial, U-Utility, F-Farm

Form 50 (54) - MILLER-BAYNE COMPANY, MINNEAPOLIS

Table with columns: IN WHOSE NAME ASSESSED, TO WHOM TRANSFERRED, SUBDIVISION, DESCRIPTION OF PROPERTY, TRUE AND FULL VALUATIONS, ASSESSED VALUATIONS, FINAL EQUALIZED VALUE.

Cass County, Minnesota, for Taxes for the Year 1954.

Table with columns: SOLD FOR TAXES, VALUATIONS BY SCHOOL DISTRICTS AS EQUALIZED BY DEPARTMENT OF TAXATION, Tax including State Homestead, State Tax on Non-Homestead, SPECIAL TAXES, TOTAL TAXES, PAID, WHEN PAID, Number of Receipt, March Settlement 1955, June Settlement 1955, November Settlement 1955, Collections to First Monday in January 1956, Delinquent on First Monday in January 1956, Total Delinquent Tax and Penalty, REMARKS.

Wabedo Pass, Wabedo Springs, Iowa Point, Manders Addition

Handwritten entries for property owners: Joseph P. Beres + Emma C. Beres, Charles Caswell Marvin W + Marie E. Liljquist, Joel A. + Pauline M. Mank, Ellsworth G. + Katherine Joss.

Handwritten tax entries and remarks: PAID IN FULL MAY 6 1955, 1580, 348, 348, 348, 348, 1580, PAID IN FULL MAY 31 1955, 1580, 1580, 348, 348, 348, 348, 1580.

Summary row for assessed values: 330, 1010, 1340, 232, 60, 292

Summary row for taxes: #232, 60, 292, 6594, 32, 6626, 3658, 2274, 694

