

Assessment & Tax List - 1963

Wabedo

Assessment of

Form 314 - SMALL TOWN EDITION, MINNESOTA

TABULAR SCHEDULE OF VALUATIONS,

LEVIED IN THE Town OF Nabes

RATES AND TAXES

COUNTY OF CASS, STATE OF MINNESOTA

NAME OF OWNER

School District No.	VALUATION BY SCHOOL DISTRICTS				RATE OF STATE TAXES		RATE OF COUNTY TAXES					RATE OF TOWN TAXES										SCHOOL TAXES			TAXES LEVIED																					
	Agricultural Lands	Non-Agricultural Lands	Personal Property	Total Value of all Property except Money and Credits	Total Rate of State Tax	Total Rate of County Tax	Rev.	R. & B.	Welfare	Bonds and Int.	City	Para	Total Rate of Town Tax	Local	Special	State Loan	Deficiency	Tuition	Transportation	Local 1 Mill	Special	State Loan	Def.	Total School Taxes	FUNDS	Rate	Amounts																			
1	78,886	69,201 ^{MA}	16,332	164,419	11.82	12.83	31.51	20.59	1.92	2.51	5.17	12.83	5.73											92.03	23538	1145.64	1262.00	5180.84	328838	9784.57	315.68	328.84	850.04	822.09	1200.26	2022.35	4999.04	11843.10	16842.14	41467.70						
2					N. 11. 8.92																			247.16																						
3					17.14																																									
4	Assessed Value Homestead	Rural 25,094	All Other	Personal Property 25,094																																										
5	Non-Homestead	122,993		16,332																																										
6	Total	148,087		16,332																																										
7																																														

LOCAL 1 MILL AND SPECIAL SCHOOL TAXES BY DISTRICTS										ALL OTHER TAXES									
Local 1 Mill	Special	State Loan	Def.	Total School Taxes	FUNDS	Rate	Amounts												
1577.72	3421.32	4999.04	5682.16	7259.88	State - Non-Homestead		1145.64												
			6160.94	9582.26	State - Homestead		1262.00												
			11843.10	16842.14	County Revenue,		5180.84												
					County Road and Bridge,		328838												
					County Welfare,		9784.57												
					Bonds and Interest		315.68												
					C. H. Bldg.		328.84												
					PERA		850.04												
					Town Revenue,		822.09												
					Town Road and Bridge,		1200.26												
					Town State Loan.		2022.35												
					School Local 1 Mill,		4999.04												
					School Special,		11843.10												
					School State Loan,														
					Deficiency														
					Tuition														
					Transportation														

Total Number of Acres 7609.15
 Total Levy, \$ 41,467.70
 State of Minnesota, ss. Edw. J. Doney
 Auditor of said County and State of Minnesota, do hereby certify that the foregoing is a true and correct Schedule, showing the valuation of all the taxable property, in the County of Nabes, in said County, the several rates of Taxation and Totals of the several Tax Funds levied thereon for the year A. D. 1967, payable on 1967 day of December A. D. 1967.
 Witness my hand and official seal, this 31st day of December A. D. 1967.
Edw. J. Doney County Auditor
By Helen Tolben Deputy

Total Taxes Real Estate 37337.70
 Pers. Prop. 4130.00
 Total 41467.70

SEAL

Assessment Roll and Tax List of Real Property in the Town of Wabeka, Minnesota

* Indicate Type of Property: R-Residential, C-Commercial, I-Industrial, U-Utility, F-Farm, L-Lakeshore, T-Timber, M-Mineral

Table with columns: IN WHOSE NAME ASSESSED, DESCRIPTION OF PROPERTY, TRUE AND FULL VALUATIONS, ASSESSED VALUATIONS, and FINAL EQUALIZED VALUE.

Cass County, Minnesota, for Taxes for the Year 1963.

Table with columns: VALUATIONS BY SCHOOL DISTRICTS AS EQUALIZED BY DEPARTMENT OF TAXATION, Tax including State Homestead, State Tax on Non-Homestead, SPECIAL TAXES, TOTAL TAXES, PAID, WHEN PAID, Number of Receipt, March Settlement, June Settlement, November Settlement, Collections to First Monday in January 1965, Delinquent on First Monday in January 1965, Total Delinquent Tax and Penalty, and REMARKS.

Assessment Roll and Tax List of Real Property in the Town of Wabedo

Cass County, Minnesota, for Taxes for the Year 1963.

* Indicate Type of Property: R-Residential, C-Commercial, I-Industrial, U-Utility, F-Farm, L-Lakeshore, T-Timber, M-Mineral

Table with columns for IN WHOSE NAME ASSESSED, DESCRIPTION OF PROPERTY, TRUE AND FULL VALUATIONS, ASSESSED VALUATIONS, VALUATIONS BY SCHOOL DISTRICTS AS EQUALIZED BY DEPARTMENT OF TAXATION, TAXES, PAID, WHEN PAID, and REMARKS. Includes handwritten entries for property owners like Roy W. Rose, Wm. A. & Isla Johnson, and James J. & George J. Daugherty.

Assessment Roll and Tax List of Real Property in the Town of Wahedo

* Indicate Type of Property: R-Residential, C-Commercial, I-Industrial, U-Utility, F-Farm, L-Lakeshore, T-Timber, M-Mineral

Cass County, Minnesota, for Taxes for the Year 1963.

Table with columns: IN WHOSE NAME ASSESSED, DESCRIPTION OF PROPERTY, TRUE AND FULL VALUATIONS, ASSESSED VALUATIONS, and FINAL EQUALIZED VALUE.

Table with columns: VALUATIONS BY SCHOOL DISTRICTS AS EQUALIZED BY DEPARTMENT OF TAXATION, Tax including State Homestead, State Tax on Non-Homestead, SPECIAL TAXES, TOTAL TAXES, PAID, WHEN PAID, Number of Receipt, March Settlement 1964, June Settlement 1964, November Settlement 1964, Collections to First Monday in January 1965, Delinquent on First Monday in January 1965, Total Delinquent Tax and Penalty, and REMARKS.

William H. + Marie Streitberger

Dorothy Workman

Ingebrigt + Cecelia G. Grimmo

William T. + Ingeborg Morahan

Handwritten summary calculations: 274, 4398, 1057, 1449, 6450, 370.06, 434.56, 11.82, 446.38.

Handwritten tax payment records: 1st HALF PAID APR 30 1964, 2nd HALF PAID SEP 11 1964, etc.

Assessment Roll and Tax List of Real Property in the Town of Wabedeau

* Indicate Type of Property: R-Residential, C-Commercial, I-Industrial, U-Utility, F-Farm, L-Lakeshore, T-Timber, M-Mineral

Cass County, Minnesota, for Taxes for the Year 1963.

Table with columns: IN WHOSE NAME ASSESSED, DESCRIPTION OF PROPERTY, TRUE AND FULL VALUATIONS, ASSESSED VALUATIONS, and FINAL EQUALIZED VALUE. Includes entries for Edward & Ruth Florzak, Longville Timber Company, Thomas & Ruth E. Lyons, and Wilbur L. & Edna Haire.

Table with columns: VALUATIONS BY SCHOOL DISTRICTS AS EQUALIZED BY DEPARTMENT OF TAXATION, Tax Including State Homestead, State Tax on Non-Homestead, SPECIAL TAXES, TOTAL TAXES, PAID, WHEN PAID, Number of Receipt, March Settlement 1964, June Settlement 1964, November Settlement 1964, Collections to First Monday in January 1965, Delinquent on First Monday in January 1965, Total Delinquent Tax and Penalty, and REMARKS. Includes payment dates like 'PAID IN FULL MAY 28 1964'.

Assessment Roll and Tax List of Real Property in the Town of Wahedah

* Indicate Type of Property: R-Residential, C-Commercial, I-Industrial, U-Utility, F-Farm, L-Lakeshore, T-Timber, M-Mineral

Cass County, Minnesota, for Taxes for the Year 1963.

Table with columns for Property Description, Valuations (Rural, All Other, Machinery, etc.), Taxes (SOLD FOR TAXES, VALUATIONS BY SCHOOL DISTRICTS, etc.), and Remarks. Includes handwritten entries for property owners like Ralph & Selma Manders and Thomas H. Connors.

Assessment Roll and Tax List of Real Property in the Town of Wabedo

* Indicate Type of Property: R-Residential, C-Commercial, I-Industrial, U-Utility, F-Farm, L-Lakeshore, T-Timber, M-Mineral

Table with columns: IN WHOSE NAME ASSESSED, DESCRIPTION OF PROPERTY, TRUE AND FULL VALUATIONS, ASSESSED VALUATIONS, and FINAL EQUALIZED VALUE. Includes handwritten entries for Fred J. & Mary Alice Rynda, Agatha E. & Harold R. Swanson, Lambert W. Stauleup, Henry W. Rose, George B. & Margaret C. Cook, and Glenmar Lodge, Inc.

Cass County, Minnesota, for Taxes for the Year 1963.

Table with columns: VALUATIONS BY SCHOOL DISTRICTS AS EQUALIZED BY DEPARTMENT OF TAXATION, Tax including State Homestead, SPECIAL TAXES, TOTAL TAXES, PAID, WHEN PAID, Number of Receipt, March Settlement 1964, June Settlement 1964, November Settlement 1964, Collections to First Monday in January 1965, Delinquent on First Monday in January 1965, Total Delinquent Tax and Penalty, and REMARKS. Includes handwritten entries for various tax payments and dates.

Assessment Roll and Tax List of Real Property in the Town of Wahedo.

Indicate Type of Property: R-Residential, C-Commercial, I-Industrial, U-Utility, F-Farm, L-Lakeshore, T-Timber, M-Mineral

Cass County, Minnesota, for Taxes for the Year 1963.

Table with columns for 'DESCRIPTION OF PROPERTY', 'TRUE AND FULL VALUATIONS', 'ASSESSED VALUATIONS', 'VALUATIONS BY SCHOOL DISTRICTS AS EQUALIZED BY DEPARTMENT OF TAXATION', 'Taxes', 'PAID', 'WHEN PAID', 'Number of Receipt', 'March Settlement 1964', 'June Settlement 1964', 'November Settlement 1964', 'Collections to First Monday in January 1965', 'Delinquent on First Monday in January 1965', 'Total Delinquent Tax and Penalty', and 'REMARKS'. Includes handwritten entries for Leonard E. & Marjorie Carlson, B. E. Wideman, Glenmore Lodge, Inc., and Alexander B. & Gertrude W. Rolfe.

Assessment Roll and Tax List of Real Property in the Town of Wahedo

* Indicate Type of Property: R-Residential, C-Commercial, I-Industrial, U-Utility, F-Farm, L-Lakeshore, T-Timber, M-Mineral

Form SCD MILLER-DAVIS CO., MINNEAPOLIS

Table with columns: IN WHOSE NAME ASSESSED, DESCRIPTION OF PROPERTY, TRUE AND FULL VALUATIONS, ASSESSED VALUATIONS, FINAL EQUALIZED VALUE. Includes handwritten entries for Glenmar Lodge, Inc., James H. & Lillian Clark Foundation, etc.

Cass County, Minnesota, for Taxes for the Year 1963.

Table with columns: SOLD FOR TAXES, VALUATIONS BY SCHOOL DISTRICTS AS EQUALIZED BY DEPARTMENT OF TAXATION, Tax Including State Homestead, SPECIAL TAXES, TOTAL TAXES, PAID, WHEN PAID, Number of Receipt, March Settlement, June Settlement, November Settlement, Collections to First Monday in January 1965, Delinquent on First Monday in January 1965, Total Delinquent Tax and Penalty, REMARKS. Includes handwritten entries and calculations.

Assessment Roll and Tax List of Real Property in the Town of Waldo

* Indicate Type of Property: R-Residential, C-Commercial, I-Industrial, U-Utility, F-Farm, L-Lakeshore, T-Timber, M-Mineral

Form SCD - MILLER-DAVIS CO., MINNEAPOLIS

IN WHOSE NAME ASSESSED	SUBDIVISION	Sec. or Lot	Town or Block	Rng.	Number of Acres of Land	Acres 100ths	No. School District	Indicate Homestead Yes or No	Agricultural Yes or No	Indicate Type of Property	TRUE AND FULL VALUATIONS				ASSESSED VALUATIONS							FINAL EQUALIZED VALUE			
											LAND Exclusive of Structures and Improvements	BUILDINGS and Other Structures	MACHINERY Permanently Attached to Real Estate	TOTAL True and Full Value	RURAL			ALL OTHER			MACHINERY Permanently Attached to Real Estate		Seasonal and Recreational Cabins	TOTAL ASSESSED VALUE	Total Assessed Value as Equalized by the Board of Review
															Homestead Up to \$4,000 20%	Over \$4,000 and Non-Homestead 33 1/4%	Timber Land Class 3e 20%	Homestead Up to \$4,000 25%	Over \$4,000 and Non-Homestead 40%	33 1/4%					
S.M. & Marie Robinson	NE 1/4 of NE 1/4	9	14028		40		UN	Yes	No	R					150 added by TB.			4411							
Joan J. Speicher	NW 1/4 of NE 1/4				40			No	No	C															
The Board of North Central Area Council of the National Council of Young Men's Christian Assn.	SW 1/4 of NE 1/4																								
"	SE 1/4 of NE 1/4																								
"	NE 1/4 of NW 1/4																								
Northern Pacific Railway Co.	NW 1/4 of NW 1/4				40			No	Yes	T															
Conservation Co.	SW 1/4 of NW 1/4				40			No	Yes	T															
The Board of North Central Area Council of the National Council of Young Men's Christian Assn.	SE 1/4 of NW 1/4																								
"	NE 1/4 of SW 1/4																								
"	NW 1/4 of SW 1/4																								
"	SW 1/4 of SW 1/4																								
"	SE 1/4 of SW 1/4																								
"	NE 1/4 of SE 1/4																								
"	NW 1/4 of SE 1/4																								
"	SW 1/4 of SE 1/4																								
"	SE 1/4 of SE 1/4																								

160

Cass County, Minnesota, for Taxes for the Year 1963.

SOLD FOR TAXES	VALUATIONS BY SCHOOL DISTRICTS AS EQUALIZED BY DEPARTMENT OF TAXATION						Tax including State Homestead Mills	State Tax on Non-Homestead Mills	SPECIAL TAXES	SPECIAL TAXES	TOTAL TAXES	PAID	WHEN PAID	Number of Receipt	March Settlement 1964	June Settlement 1964	Penalty 1964	November Settlement 1964	Penalty 1964	Collections to First Monday in January 1965	Penalty 1965	Delinquent on First Monday in January 1965	Total Delinquent Tax and Penalty	REMARKS
	District No.	District No.	District No.	District No.	District No.	District No.																		
	Rate	Rate	Rate	Rate	Rate	Rate																		
1	Rate 2.5 Mills	Rate 3 Mills	Rate 3 Mills	Rate 3 Mills	Rate 3 Mills	Rate 3 Mills	8.92 Mills					Balance Paid OCT 30 1964	10444											112.943 abated Paid Under Protest 20512
2							94.50				104496	HALF PAID MAY 29 1964	12875		52.48		42.02							6436 8 7080 20404
7							94	80			2198	PAID IN FULL MAY 29 1964	16833		4396									20513
8							90	80			2198	PAID IN FULL MAY 29 1964												"
20							180	160			21168				9644		4302							10.76 abated

180

WALDO SERIES WA FORM WALTER'S ADD'N WILKIE CAYMAN BEAVER WALTER'S S. BEAVER WALTER'S S.

Assessment Roll and Tax List of Real Property in the Town of Wahdo

* Indicate Type of Property: R-Residential, C-Commercial, I-Industrial, U-Utility, F-Farm, L-Lakeshore, T-Timber, M-Mineral

Table with columns: IN WHOSE NAME ASSESSED, DESCRIPTION OF PROPERTY, TRUE AND FULL VALUATIONS, ASSESSED VALUATIONS, and FINAL EQUALIZED VALUE. Includes entries for David J. & June E. Diken, Joseph B. & Byrle E. Harris, Mrs. Wilma Larrabee, etc.

Cass County, Minnesota, for Taxes for the Year 1963.

Table with columns: SOLD FOR TAXES, VALUATIONS BY SCHOOL DISTRICTS AS EQUALIZED BY DEPARTMENT OF TAXATION, Tax including State Homestead, State Tax on Non-Homestead, SPECIAL TAXES, TOTAL TAXES, PAID, WHEN PAID, Number of Receipt, March Settlement 1964, June Settlement 1964, November Settlement 1964, Collections to First Monday in January 1965, Delinquent on First Monday in January 1965, Total Delinquent Tax and Penalty, REMARKS. Includes entries for David J. & June E. Diken, Joseph B. & Byrle E. Harris, etc.

Assessment Roll and Tax List of Real Property in the Town of Wakefield

Cass County, Minnesota, for Taxes for the Year 1963.

* Indicate Type of Property: R-Residential, C-Commercial, I-Industrial, U-Utility, F-Farm, L-Lakeshore, T-Timber, M-Mineral

Table with columns: IN WHOSE NAME ASSESSED, DESCRIPTION OF PROPERTY, TRUE AND FULL VALUATIONS, ASSESSED VALUATIONS, and FINAL EQUALIZED VALUE.

Table with columns: VALUATIONS BY SCHOOL DISTRICTS AS EQUALIZED BY DEPARTMENT OF TAXATION, Tax Including State Homestead, State Tax on Non-Homestead, SPECIAL TAXES, TOTAL TAXES, PAID, WHEN PAID, Number of Receipt, March Settlement 1964, June Settlement 1964, Penalty, November Settlement 1964, Collections to First Monday in January 1965, Delinquent on First Monday in January 1965, Total Delinquent Tax and Penalty, and REMARKS.

234 32

W 54 457 511 H 1482 = 1536 822 = 1279 2304 = 2815 W 12030 58838 70868 1138 72006

39,02 34920

Cancel 79.64

VALERO P.S.S. VALERO SPRINGS VA. POINT MANER'S ADD'N WINDIE CATALPA BEACH S. BEACH VALERO'S I.

Assessment Roll and Tax List of Real Property in the Town of Wabedo

Table with columns: IN WHOSE NAME ASSESSED, DESCRIPTION OF PROPERTY, TRUE AND FULL VALUATIONS, ASSESSED VALUATIONS, FINAL EQUALIZED VALUE.

Table with columns: VALUATIONS BY SCHOOL DISTRICTS AS EQUALIZED BY DEPARTMENT OF TAXATION, TAX INCLUDING STATE HOMESTEAD, SPECIAL TAXES, TOTAL TAXES, PAID, WHEN PAID, Number of Receipt, March Settlement, June Settlement, November Settlement, Collections to First Monday in January, Delinquent on First Monday in January, Total Delinquent Tax and Penalty, REMARKS.

Assessment Roll and Tax List of Real Property in the Town of Wakefield

Table with columns: IN WHOSE NAME ASSESSED, DESCRIPTION OF PROPERTY, TRUE AND FULL VALUATIONS, ASSESSED VALUATIONS, and FINAL EQUALIZED VALUE. Includes entries for Raymond & Karen Hausken, Clara Madreau, Russell & Betty Ewaldt, Florence S. & Merritt J. Jordan, and Reuben W. & Ethel E. Balstad.

Table with columns: VALUATIONS BY SCHOOL DISTRICTS AS EQUALIZED BY DEPARTMENT OF TAXATION, Tax Including State Homestead, SPECIAL TAXES, TOTAL TAXES, PAID, WHEN PAID, Number of Receipt, March Settlement 1964, June Settlement 1964, November Settlement 1964, Collections to First Monday in January 1965, Delinquent on First Monday in January 1965, Total Delinquent Tax and Penalty, and REMARKS. Includes handwritten tax amounts and payment dates.

Assessment Roll and Tax List of Real Property in the Town of Wabedo, Cass County, Minnesota, for Taxes for the Year 1963.

Cass County, Minnesota, for Taxes for the Year 1963.

Form 507 MILLER-DAVIS CO., MINNEAPOLIS

Table with columns for property description, valuations, taxes, and payments. Includes handwritten entries for John S. & Elizabeth Gaines, Robert D. & Janet Gainer, Joseph F. & Gertrude Sears, and Fred G. & Lucie M. Diesch.

Assessment Roll and Tax List of Real Property in the Town of Wabedo

* Indicate Type of Property: R-Residential, C-Commercial, I-Industrial, U-Utility, F-Farm, L-Lakeshore, T-Timber, M-Mineral

Form 5CD MILLER-DAVIS CO., MINNEAPOLIS

IN WHOSE NAME ASSESSED	DESCRIPTION OF PROPERTY				No. School District	Indicate Homestead Yes or No	Agricultural Recr. Yes or No	Indicate Type of Property	TRUE AND FULL VALUATIONS					ASSESSED VALUATIONS							FINAL EQUALIZED VALUE Dollars	
	SUBDIVISION	Sec. or Lot	Town or Block	Rng. Acres of Land					LAND Exclusive of Structures and Improvements	BUILDINGS and Other Structures	MACHINERY Permanently Attached to Real Estate	TOTAL True and Full Value	RURAL			ALL OTHER			MACHINERY Seasonal and Recreational Cabins	TOTAL ASSESSED VALUE		Total Assessed Value as Equalized by the Board of Review
													Acres 100ths	Homestead Up to \$4,000 20%	Over \$4,000 and Non-Homestead 33 1/3%	Timber Land Class 3e 20%	Homestead Up to \$4,000 25%	Over \$4,000 and Non-Homestead 40%				
Alfred F. Manicke	1	NE 1/4 of NE 1/4	16 140.25	40	UW	No	Year T															
State of Minnesota	2	NW 1/4 of NE 1/4																				
State of Minnesota	3	SW 1/4 of NE 1/4																				
Alfred F. Manicke	4	SE 1/4 of NE 1/4		40		No	Year T															
State of Minnesota	6	NE 1/4 of NW 1/4																				
State of Minnesota	7	NW 1/4 of NW 1/4																				
George C. Hagen	8	W 1/2 of SW 1/4 of NW 1/4		20		Yes	Year T															
State of Minnesota	9	SE 1/4 of NW 1/4																				
Ansel & Ruth Bishop	10	E 1/2 of SW 1/4 of NW 1/4		20		No	Year T															
State of Minnesota	11	NE 1/4 of SW 1/4																				
Longville Timber Co.	12	NW 1/4 of SW 1/4		40		No	Year R															
State of Minnesota	13	SW 1/4 of SW 1/4																				
State of Minnesota	14	SE 1/4 of SW 1/4																				
State of Minnesota	16	NE 1/4 of SE 1/4																				
State of Minnesota	17	NW 1/4 of SE 1/4																				
State of Minnesota	18	SW 1/4 of SE 1/4																				
State of Minnesota	19	SE 1/4 of SE 1/4																				
	20																					

160

Cass County, Minnesota, for Taxes for the Year 1963.

SOLD FOR TAXES	VALUATIONS BY SCHOOL DISTRICTS AS EQUALIZED BY DEPARTMENT OF TAXATION						Tax Including State Homestead Mills	State Tax on Non-Homestead 8.92 Mills	SPECIAL TAXES	SPECIAL TAXES	TOTAL TAXES	PAID	WHEN PAID	Number of Receipt	March Settlement 1964	June Settlement 1964	Penalty	November Settlement 1964	Penalty	Collections to First Monday in January 1965	Penalty	Delinquent on First Monday in January 1965	Total Delinquent Tax and Penalty	REMARKS		
	District No. Rate	District No. Rate	District No. Rate	District No. Rate	District No. Rate	District No. Rate																				
	Mills	Mills	Mills	Mills	Mills	Mills																				
	Dollars	Dollars	Dollars	Dollars	Dollars	Dollars																				
1		80					1884	72		1956	1	PAID IN FULL DEC 2 1964	21441										1956		20538	
2											2															
3											3															
4		80					1884	72		1956	4	PAID IN FULL DEC 2 1964	21441											1956		20538
5											5															
6											6															
7											7															
8		H 24					564			564	8	2nd HALF PAID OCT 22 1964 1st HALF PAID MAY 20 1964	17323 1237		282		282								18251	20542
9											9															
10		40					942	36		978	10	PAID IN FULL APR 21 1964	7196													20539
11											11															
12											12	2nd HALF PAID AUG 18 1964 1st HALF PAID MAY 29 1964	17324 1604		2577		2577									20659
13											13															
14											14															
15											15															
16											16															
17											17															
18											18															
19											19															
20											20															

H 24
200
224

195
395
419

A 5274
4980
10254

354

10608

3837

2859

3912

Assessment Roll and Tax List of Real Property in the Town of Wabedo

Cass County, Minnesota, for Taxes for the Year 1963.

* Indicate Type of Property: R-Residential, C-Commercial, I-Industrial, U-Utility, F-Farm, L-Lakeshore, T-Timber, M-Mineral

Table with columns: IN WHOSE NAME ASSESSED, DESCRIPTION OF PROPERTY, ASSESSED VALUATIONS (RURAL, ALL OTHER, MACHINERY, Seasonal and Recreational Cabins, TOTAL ASSESSED VALUE, Total Assessed Value as Equalized by the Board of Review, FINAL EQUALIZED VALUE), VALUATIONS BY SCHOOL DISTRICTS AS EQUALIZED BY DEPARTMENT OF TAXATION, Tax including State Homestead, SPECIAL TAXES, TOTAL TAXES, PAID, WHEN PAID, Number of Receipt, March Settlement 1964, June Settlement 1964, November Settlement 1964, Collections to First Monday in January 1965, Delinquent on First Monday in January 1965, Total Delinquent Tax and Penalty, REMARKS.

Assessment Roll and Tax List of Real Property in the Town of Wabedo

* Indicate Type of Property: R-Residential, C-Commercial, I-Industrial, U-Utility, F-Farm, L-Lakeshore, T-Timber, M-Mineral

Form SCD MILLER-DAVIS CO., MINNEAPOLIS

Table with columns: IN WHOSE NAME ASSESSED, DESCRIPTION OF PROPERTY, TRUE AND FULL VALUATIONS, ASSESSED VALUATIONS, and FINAL EQUALIZED VALUE. Rows include property owners like E.C. Thompson, State of Minnesota, Kenneth C. & Phyllis H.A. Rice, Erick L. & Margaret E. Fars, Leon L. Smythe, Walter G. Karathj Thompson, Felton Enterprises, Inc., George H. & Sarah Lee Hafner, and State of Minnesota.

(Cont. on next page)

19660

448

Cass County, Minnesota, for Taxes for the Year 1963.

Table with columns: VALUATIONS BY SCHOOL DISTRICTS AS EQUALIZED BY DEPARTMENT OF TAXATION, Tax including State Homestead, State Tax on Non-Homestead, SPECIAL TAXES, TOTAL TAXES, PAID, WHEN PAID, Number of Receipt, March Settlement, June Settlement, November Settlement, Collections to First Monday in January 1965, Delinquent on First Monday in January 1965, Total Delinquent Tax and Penalty, and REMARKS. Includes handwritten calculations and dates like OCT 3 1964 and MAY 2 1964.

1386

448 = 448
850 = 2236
7298 = 2684

322624
33148
65772

1994

67766

37254

28802

1710

Assessment Roll and Tax List of Real Property in the Town of Wabedo

* Indicate Type of Property: R-Residential, C-Commercial, I-Industrial, U-Utility, F-Farm, L-Lakeshore, T-Timber, M-Mineral

Cass County, Minnesota, for Taxes for the Year 1963.

Table with columns: IN WHOSE NAME ASSESSED, DESCRIPTION OF PROPERTY, TRUE AND FULL VALUATIONS, ASSESSED VALUATIONS, VALUATIONS BY SCHOOL DISTRICTS AS EQUALIZED BY DEPARTMENT OF TAXATION, Tax Including State Homestead, SPECIAL TAXES, TOTAL TAXES, PAID, WHEN PAID, Number of Receipt, March Settlement 1964, June Settlement 1964, Penalty, November Settlement 1964, Penalty, Collections to First Monday in January 1965, Penalty, Delinquent on First Monday in January 1965, Total Delinquent Tax and Penalty, REMARKS.

8405

1919 4 861 = 861 45168 170748 6906 222822 5825 = 7744 6686 = 8605

Vertical text on the right edge of the page, including 'VALUED BY...', 'PAID FOR...', 'REMARKS', and 'TAXES'.

Assessment Roll and Tax List of Real Property in the Town of Wabedo

* Indicate Type of Property: R-Residential, C-Commercial, I-Industrial, U-Utility, F-Farm, L-Lakeshore, T-Timber, M-Mineral

Table with columns: IN WHOSE NAME ASSESSED, DESCRIPTION OF PROPERTY, TRUE AND FULL VALUATIONS, ASSESSED VALUATIONS, and FINAL EQUALIZED VALUE. Includes handwritten entries for various property owners like League A. + Pearl V. Wytchaley and B. E. Holman.

(Cont. on next page)

Cass County, Minnesota, for Taxes for the Year 1963.

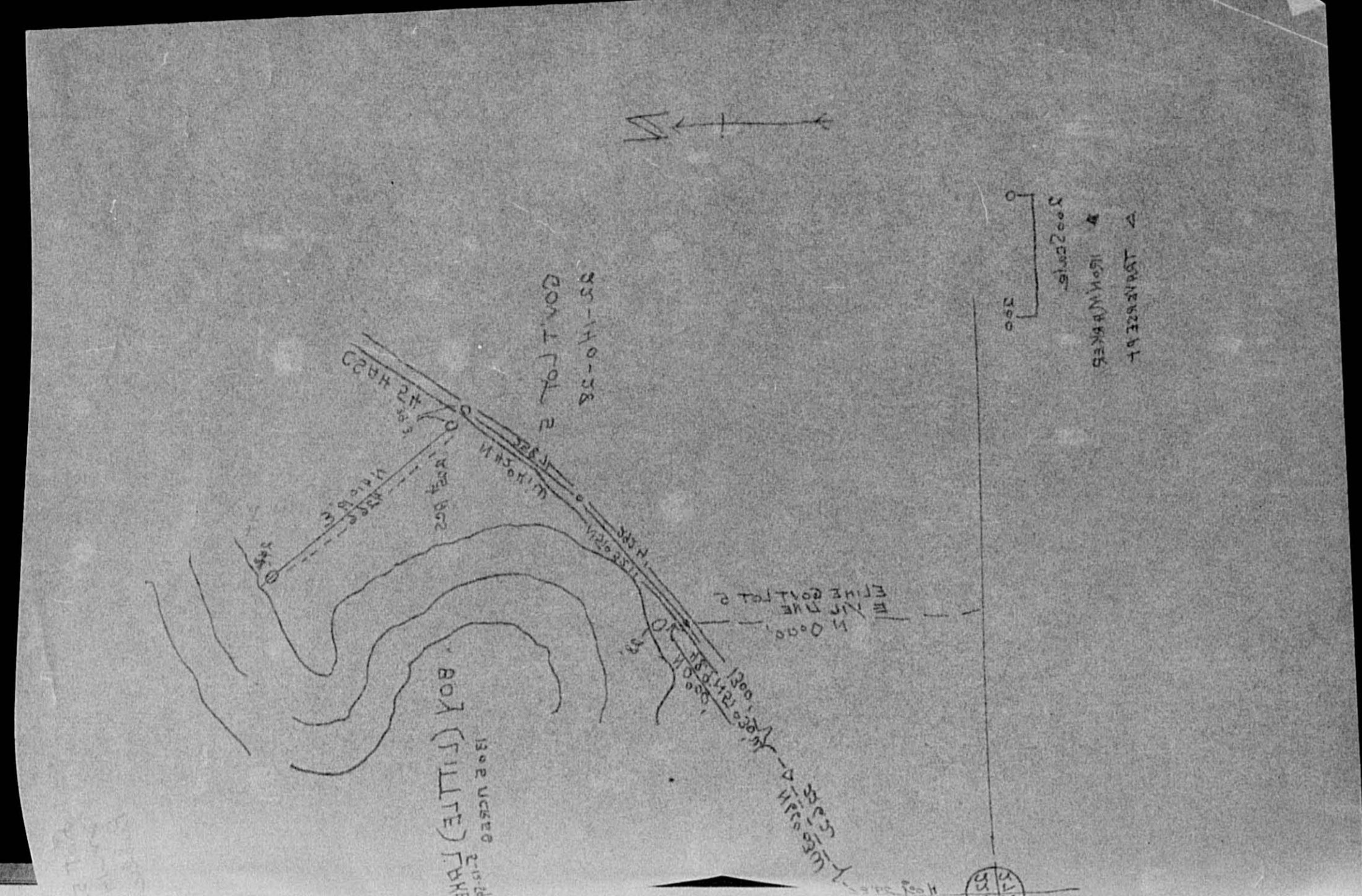
Table with columns: SOLD FOR TAXES, VALUATIONS BY SCHOOL DISTRICTS AS EQUALIZED BY DEPARTMENT OF TAKATION, SPECIAL TAXES, TOTAL TAXES, PAID, WHEN PAID, and REMARKS. Includes handwritten entries for various tax payments and dates.

Assessment Roll and Tax List

Property in the Town of Wabedo. Indicate Type of Property: R-Residential, C-Commercial, I-Industrial, U-Utility, F-Farm, L-Lakeshore, T-Timber, M-Mineral

Table with columns: IN WHOSE NAME ASSESSED, DESCRIPTION OF PROPERTY, TRUE AND FULL VALUATIONS, ASSESSED VALUATIONS (RURAL, ALL OTHER, MACHINERY), Total Assessed Value, Final Equalized Value. Includes property entries for Frank E & Helen R. Barger, Thomas J & Max Rose McKeever, Margaret J. Berg, Lyle H. & Helen Craddock, Wabedo Swp, State of Minnesota, Lyle H. & Helen Craddock, Michael & Ann M. Semotick, Ray J. Mace, Wm. C. & Louise O. Lampman, B. B. & Marvion J. Yuseck, Lewis M. & Ruth P. Houser, Herman P. & E. Uelth B. Peschken, Lambie Clara & Elvener, Michael & Ann M. Semotick.

cont. on next page



Cass County, Minnesota, for Taxes for the Year 1963.

Table with columns: SOLD FOR TAXES, VALUATIONS BY SCHOOL DISTRICTS AS EQUALIZED BY DEPARTMENT OF TAXATION, Tax Including State Homestead, SPECIAL TAXES, TOTAL TAXES, PAID, WHEN PAID, Number of Receipt, March, June, November Settlement, Penalty, Collections to First Monday in January 1965, Delinquent on First Monday in January 1965, Total Delinquent Tax and Penalty, REMARKS. Includes entries for 1-20 and summary rows.

Assessment Roll and Tax List of *Wabedo Twp* In Wabedo Twp
Checked 10/31/62

Lot 6 Sec 12 Twp 40-28
C-Commercial, I-Industrial, U-Utility, F-Farm, L-Lakehouse, Timber

Cass County, Minnesota, for Taxes for the Year 1963.

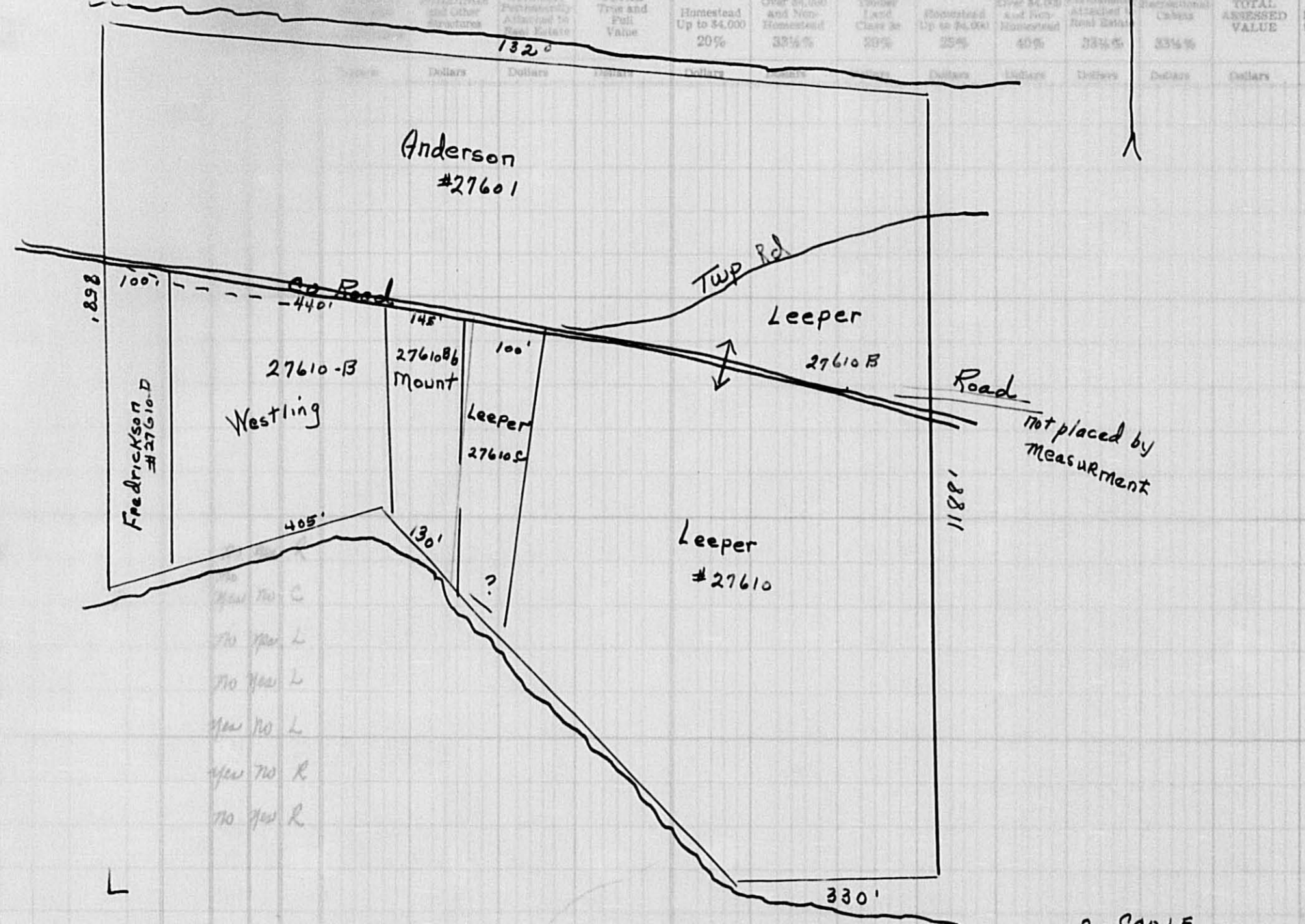
DESCRIPTION OF PROPERTY

SUBDIVISION

- 1 N.E. 1/4 of N.E. 1/4
- 2 N.W. 1/4 of N.E. 1/4
- 3 S.W. 1/4 of N.E. 1/4
- 4 S.E. 1/4 of N.E. 1/4
- 5
- 6 N.E. 1/4 of N.W. 1/4
- 7 N.W. 1/4 of N.W. 1/4
- 8 S.W. 1/4 of N.W. 1/4
- 9 S.E. 1/4 of N.W. 1/4
- 10

- 11 GOVT LOT 6 N. of Co. & Twp roads
- 12 E. 1/4 Part of GOVT LOT 6 S. of Co. & Twp roads
- 13 Part of GOVT LOT 6 S. of Co.
- 14 Part of GOVT LOT 6 S. of Co.
- 15 E. 100' of GOVT LOT 6 S. of Co.
- 16 W. 1/4 Part of GOVT LOT 6 S. of Co.
- 17 W. 100' of GOVT LOT 6 S. of Co.
- 18 Part of GOVT LOT 6
- 19 Part of GOVT LOT 6
- 20

Sigfred & Helen Anderson
Harold Salverne & Hazel Esther Leeper
"
Clarence E. & Hilda E. Mount
Curtis L. & Joan Leeper
Louis E. & Inez L. Westling
Paul D. & Lavonne A. Fredrickson
Edward V. & Elsie A. Anderson
Allen & Dorothy Whiteford



ASSESSED VALUE	FINAL EQUALIZED VALUE
Dollars	Dollars

SOLD FOR TAXES	VALUATIONS BY SCHOOL DISTRICTS AS EQUALIZED BY DEPARTMENT OF TAXATION	Tax Including State Homestead	State Tax on Non-Homestead	SPECIAL TAXES	SPECIAL TAXES	TOTAL TAXES	PAID	WHEN PAID	Number of Receipt	March Settlement 1964	June Settlement 1964	Penalty	November Settlement 1964	Penalty	Collections to First Monday in January 1965	Penalty	Delinquent on First Monday in January 1965	Total Delinquent Tax and Penalty	REMARKS
	District No. Rate Mills	District No. Rate Mills	District No. Rate Mills	District No. Rate Mills	District No. Rate Mills	\$ cts.	\$ cts.	\$ cts.	\$ cts.	\$ cts.	\$ cts.	\$ cts.	\$ cts.	\$ cts.	\$ cts.	\$ cts.	\$ cts.	\$ cts.	
1																			
2																			
3																			
4																			
5																			
6																			
7																			
8																			
9																			
10																			
11						367	8638	328	8966										18275
12						H 276 438	18234	390	18624										20604
13						315	7414	280	7694										"
14						735	17300	656	17956										18278
15						H 30	766		766										20600
16						H 405	10342		10342										18281
17						310	7296	276	7572										20603
18																			
19																			
20																			
						1727	H 711 = 711 438 = 2165 7149 = 2876		40648	1930	71920				43160			28960	

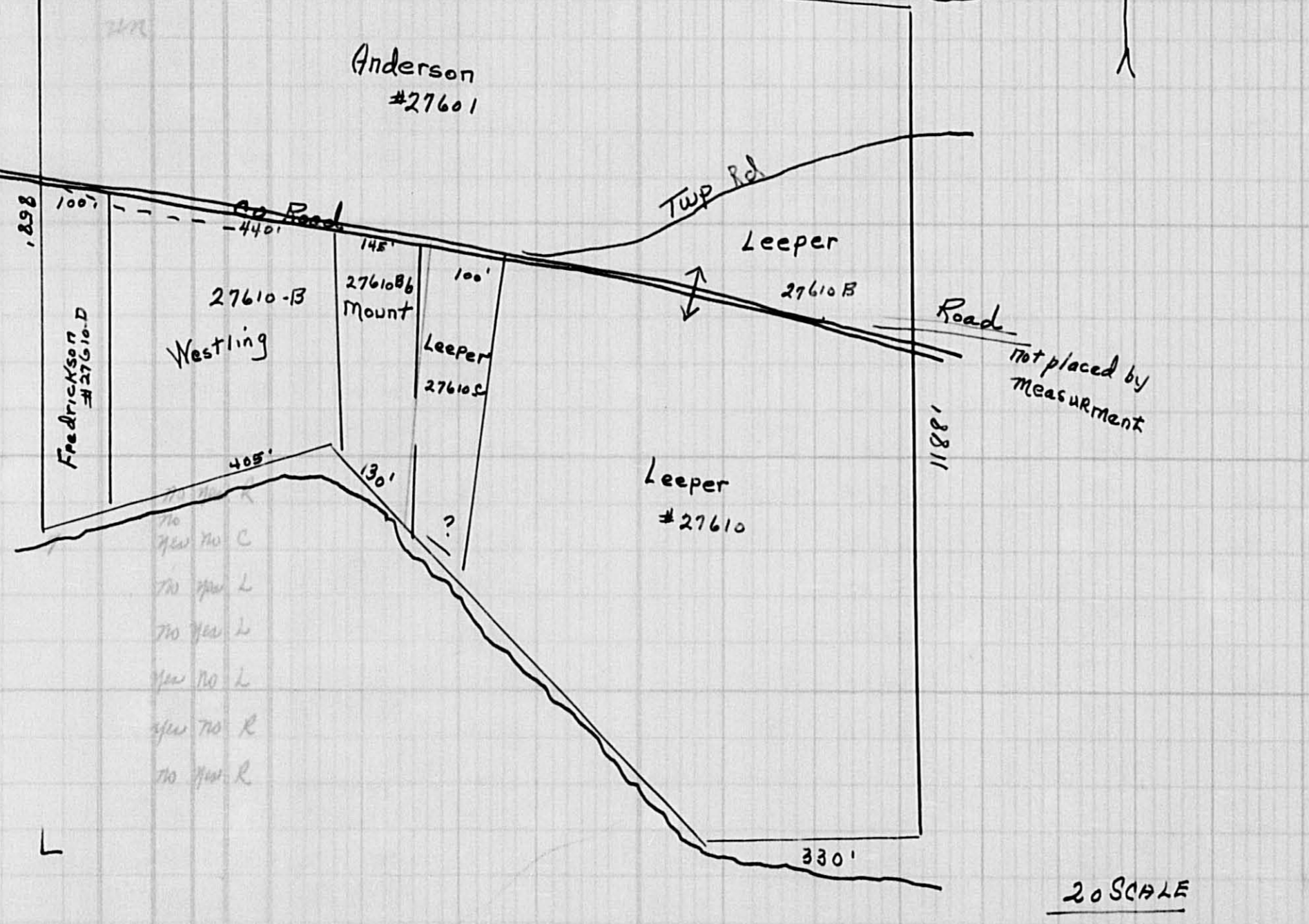
20 SCALE

VABDO P.S.S. VABDO SERIES VA POINT VABDO'S ADD' V VABDO'S ADD' V VABDO'S ADD' V VABDO'S ADD' V VABDO'S ADD' V VABDO'S ADD' V

Assessment Roll and Tax

List of Real Property in Wabedo Twp. Lot 6 Sec 23 T14N R28W
Checked 10/31/62 * Indicate Type of Property: R-Residential, C-Commercial, I-Industrial, U-Utility, F-Farm, L-Lakeshore, T-Timberland

Table with columns: LAND, BUILDINGS, RURAL, ALL OTHER, MACHINERY, TOTAL ASSESSED VALUE. Includes percentages for Homestead, Over \$4,000, Timber Land, etc.



20 SCALE

Form 500 MILLER-DAVIS CO., MINNEAPOLIS

Table with columns: IN WHOSE NAME ASSESSED, SUBDIVISION, and a grid for tax details.

Handwritten list of property owners and descriptions: Sigfred & Helen Anderson, Harold Salverne & Hazel Esther Leeper, Clarence E. & Hilda E. Mount, Curtis L. & Joan Leeper, Louis E. & Inez L. Westling, Lael B. & Lavonne A. Fredericksen, Edward V. & Elsie A. Anderson, Allen & Dorothy Whiteford.

Cass County, Minnesota, for Taxes for the Year 1963.

Main tax assessment table with columns: SOLD FOR TAXES, VALUATIONS BY SCHOOL DISTRICTS, Tax Including State Homestead, SPECIAL TAXES, TOTAL TAXES, PAID, WHEN PAID, Number of Receipt, Settlement dates, and REMARKS. Includes handwritten entries for payments and tax amounts.

Handwritten notes and calculations in the bottom right section of the table, including tax totals and payment dates.

Assessment Roll and Tax List of Real Property in the Town of Wahdo

Cass County, Minnesota, for Taxes for the Year 1963.

Table with columns: IN WHOSE NAME ASSESSED, DESCRIPTION OF PROPERTY, TRUE AND FULL VALUATIONS, ASSESSED VALUATIONS, VALUATIONS BY SCHOOL DISTRICTS, PAID, WHEN PAID, Number of Receipt, March Settlement, June Settlement, November Settlement, Collections to First Monday in January, Delinquent on First Monday in January, Total Delinquent Tax and Penalty, REMARKS.

(Cont. on next page)

VALERIO PASTOR VALERIO SPINELLI VA POINTE MAURICE S. ADDY KENNETH CALVIN BEHGE

Assessment Roll and Tax List of Real Property in the Town of Washburn

Form 500 MILLER-DAVIS CO., MINNEAPOLIS

Table with columns: IN WHOSE NAME ASSESSED, DESCRIPTION OF PROPERTY, TRUE AND FULL VALUATIONS, ASSESSED VALUATIONS, FINAL EQUALIZED VALUE.

August Gordon
Leslie E. Fitzsimmons
Harvey A. Chapin, et al
Andrew J. & Blanche H. Pearson
Willetts & Bernice J. Maile
Mary E. Mallory
Bert & Margaret Allen

Table with columns: VALUATIONS BY SCHOOL DISTRICTS AS EQUALIZED BY DEPARTMENT OF TAXATION, Tax including State Homestead, State Tax on Non-Homestead, SPECIAL TAXES, TOTAL TAXES, PAID, WHEN PAID, Number of Receipt, March Settlement, June Settlement, November Settlement, Collections to First Monday in January, Delinquent on First Monday in January, Total Delinquent Tax and Penalty, REMARKS.

Balance Paid OCT 19 1961 18799
PAID IN FULL MAY 2 9 1964 12922
PAID IN FULL MAY 1 9 1964 11338
PAID IN FULL MAY 2 9 1964 12886
2nd HALF PAID OCT 3 0 1964 20414
1st HALF PAID MAY 2 9 1964 12914
1st HALF PAID MAY 2 5 1964 10432
PAID IN FULL APR 20 1964 6978
PAID IN FULL APR 2 1 1964 7197

WARD PAISS
WARD SERIES
A POINT
MAIRER'S ADD. R
MINNIE CALVAH BRIDGE
S BRIDGE
WARD'S BRIDGE

Assessment Roll and Tax List of Real Property in the

Town of Wakefield

Cass County, Minnesota, for Taxes for the Year 1963.

* Indicate Type of Property: R-Residential, C-Commercial, I-Industrial, U-Utility, F-Farm, L-Lakeshore, T-Timber, M-Mineral

Table with columns for IN WHOSE NAME ASSESSED, DESCRIPTION OF PROPERTY, TRUE AND FULL VALUATIONS, ASSESSED VALUATIONS, VALUATIONS BY SCHOOL DISTRICTS, and TAXES. It lists 20 lots, including Government lots 1 through 5, with associated taxes and dates.

Assessment Roll and Tax List of Real Property in the _____ of _____

* Indicate Type of Property: R-Residential, C-Commercial, I-Industrial, U-Utility, F-Farm, L-Lakeshore, T-Timber, M-Mineral

Cass County, Minnesota, for Taxes for the Year 1963.

Form 5CD MILLER-DAVIS CO., MINNEAPOLIS

IN WHOSE NAME ASSESSED	DESCRIPTION OF PROPERTY			No. School District	Indi- cated Home- stead Yes or No	Agri- or Rec. Yes or No	Indi- cate Type of Prop- erty	TRUE AND FULL VALUATIONS				ASSESSED VALUATIONS						FINAL EQUALIZED VALUE	SOLD FOR TAXES	VALUATIONS BY SCHOOL DISTRICTS AS EQUALIZED BY DEPARTMENT OF TAXATION						Tax Including State Homestead	State Tax on Non-Homestead	SPECIAL TAXES	SPECIAL TAXES	TOTAL TAXES	PAID	WHEN PAID	Number of Receipt	March Settlement 1964	June Settlement 1964	Penalty	November Settlement 1964	Penalty	Collections to First Monday in January 1965	Penalty	Delinquent on First Monday in January 1965	Total Delinquent Tax and Penalty	REMARKS						
	SUBDIVISION	Sec. or Lot	Town or Block Rng.					Number of Acres of Land	LAND Exclusive of Structures and Improvements	BUILDINGS and Other Structures	MACHINERY Permanently Attached to Real Estate	TOTAL True and Full Value	RURAL		ALL OTHER		MACHINERY Permanently Attached to Real Estate			Seasonal and Recreational Cabins	TOTAL ASSESSED VALUE	Total Assessed Value as Equalized by the Board of Review	District No.	District No.	District No.																			District No.	District No.	District No.			
													Acres	100ths	Homestead Up to \$4,000 20%	Over \$4,000 and Non-Homestead 33 1/3%							Timber Land Class 3e 20%	Homestead Up to \$4,000 25%	Over \$4,000 and Non-Homestead 40%																			33 1/3%	33 1/3%	Rate..... Mills	Rate..... Mills	Rate..... Mills	Rate..... Mills
State of Minnesota	1	Gov't Lot 1	25 140 28																																														
State of Minnesota	2	NW 1/4 of NE 1/4																																															
State of Minnesota	3	SW 1/4 of NE 1/4																																															
	4	SE 1/4 of NE 1/4																																															
	5																																																
State of Minnesota	6	NE 1/4 of NW 1/4																																															
State of Minnesota	7	NW 1/4 of NW 1/4																																															
State of Minnesota	8	SW 1/4 of NW 1/4																																															
State of Minnesota	9	SE 1/4 of NW 1/4																																															
	10																																																
State of Minnesota	11	NE 1/4 of SW 1/4																																															
Harvey J. Slatum	12	NW 1/4 of SW 1/4		40											197					4636	176						4812																						
" "	13	SW 1/4 of SW 1/4		40											67					1578	60						1638																						
Vernie & Marie Farley	14	SE 1/4 of SW 1/4		40											487					11464							11464																						
	15																																																
State of Minnesota	16	Gov't Lot 2																																															
J. E. Alsop	17	NW 1/4 of SE 1/4		40											54					1272							1272																						
" "	18	SW 1/4 of SE 1/4		40											115					2706							2706																						
	19	SE 1/4 of SE 1/4																																															
	20			200											656					21656	236						21892																						

CASS COUNTY MINNESOTA
 VALDRO BASS
 VALDRO STRINGS
 VAL POINT
 VALDRO'S ADD'N
 VALDRO CHAPMAN BEACH
 BEACH
 VALDRO'S

Assessment Roll and Tax List of Real Property in the Town of Wabedo

* Indicate Type of Property: R-Residential, C-Commercial, I-Industrial, U-Utility, F-Farm, L-Lakeshore, T-Timber, M-Mineral

Form SCD MILLER-DAVIS CO., MINNEAPOLIS

Table with columns: IN WHOSE NAME ASSESSED, DESCRIPTION OF PROPERTY, TRUE AND FULL VALUATIONS, ASSESSED VALUATIONS, and FINAL EQUALIZED VALUE. Includes entries for James C. Marsh, Lee E. Groves, Leslie G. Fitzsimons, Frank & Ida Becker, Merle C. & Louise G. Kirks, A. W. & Margaret Kane, Willis H. & Daisy S. Manders, Nancy Joan & Roger Reinhardt, George H. Marsh, and State of Minnesota.

Cass County, Minnesota, for Taxes for the Year 1963.

Table with columns: VALUATIONS BY SCHOOL DISTRICTS AS EQUALIZED BY DEPARTMENT OF TAXATION, Tax Including State Homestead, State Tax on Non-Homestead, SPECIAL TAXES, TOTAL TAXES, PAID, WHEN PAID, Number of Receipt, March Settlement 1964, June Settlement 1964, Penalty, November Settlement 1964, Collections to First Monday in January 1965, Delinquent on First Monday in January 1965, Total Delinquent Tax and Penalty, and REMARKS. Includes handwritten notes like 'Value out of 9/23/63' and 'PAID IN FULL MAY 29 1964'.

Assessment Roll and Tax List of Real Property in the Town of Wabedo

* Indicate Type of Property: R-Residential, C-Commercial, I-Industrial, U-Utility, F-Farm, L-Lakeshore, T-Timber, M-Mineral

Cass County, Minnesota, for Taxes for the Year 1963

Form SCD - MILLEN-DAVIS CO., MINNEAPOLIS

Table with columns: IN WHOSE NAME ASSESSED, DESCRIPTION OF PROPERTY, TRUE AND FULL VALUATIONS, ASSESSED VALUATIONS, VALUATIONS BY SCHOOL DISTRICTS AS EQUALIZED BY DEPARTMENT OF TAXATION, SOLD FOR TAXES, SPECIAL TAXES, TOTAL TAXES, PAID, WHEN PAID, Number of Receipt, March Settlement 1964, June Settlement 1964, Penalty, November Settlement 1964, Collections to First Monday in January 1965, Delinquent on First Monday in January 1965, Total Delinquent Tax and Penalty, REMARKS.

Earl Crommett

Mrs. Bronson + Norman F.C. Rogers
Alfred R. + Dorothy H. Fratzke
L.A. + Emily Ann Peterson
Richard W. + Alice H. Duncan

Norman F.C. Rogers

Fred H. + Joyce Schwartz
Theodore Hill
Fred H. + Joyce Schwartz

(Cont. on next page)

ALBINO PASS, ALBINO SPRINGS, PA. POINT, MANAGER'S ADD'L, VITRIFIED CHALK, BRIDGE, BRIDGE, MANAGER'S

Assessment Roll and Tax List of Real Estate in the Town of Wabedo

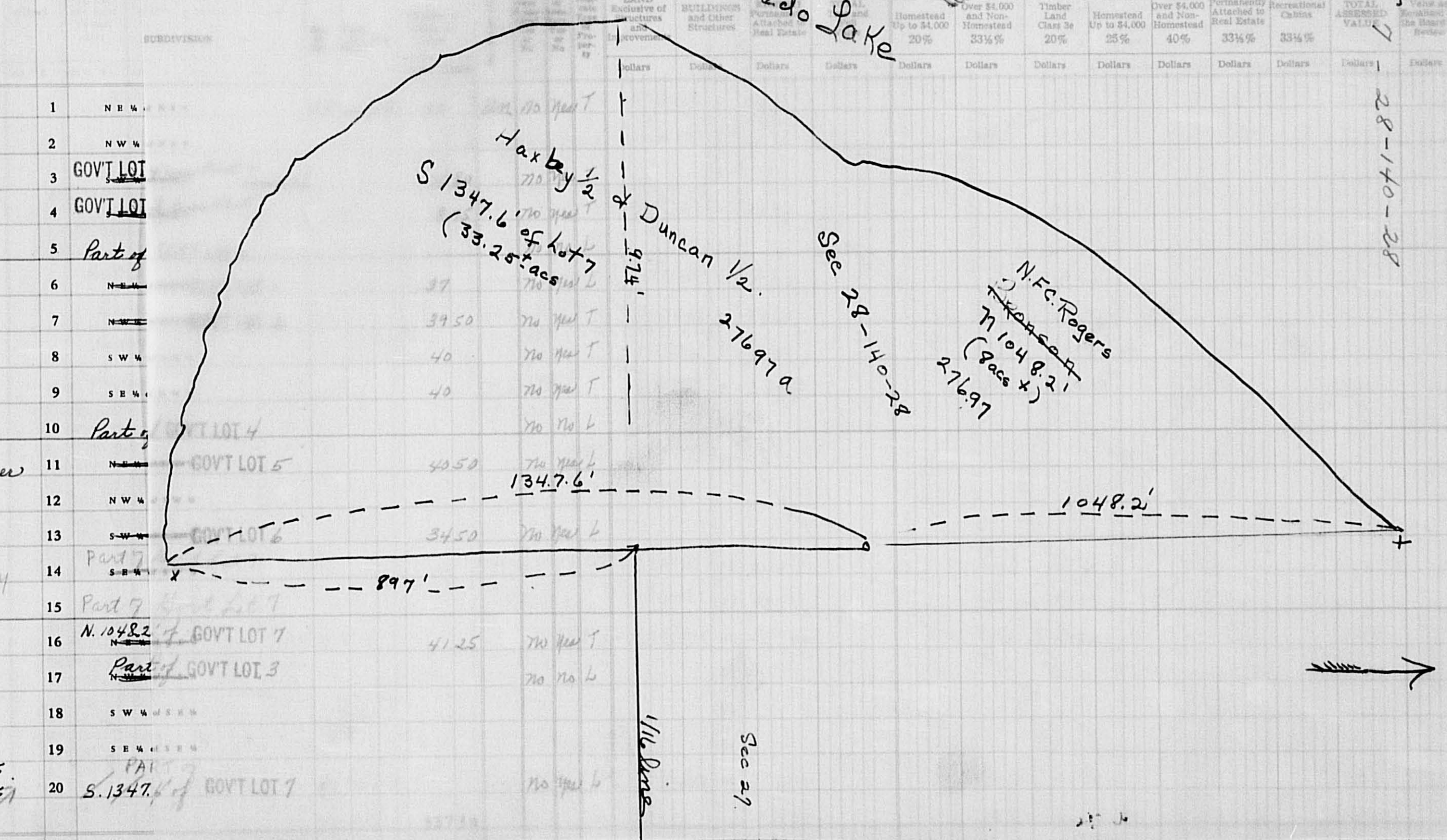
Form SCD - MILLER-DAVIS CO., MINNEAPOLIS

IN WHOSE NAME ASSESSED

DESCRIPTION OF PROPERTY

ASSESSED VALUATIONS

Wm. C. & Louise O. Sampman
 State of Minnesota
 Wm. A. & V. Beatrice Burnson
 Robert E. & Ruth E. Chapman
 Sam A. & Dorothy M. Rofstrom
 B. E. Holman
 " "
 " "
 " "
 Arne N. & Carol Langsjoen
 John Kenneth & Lois Neva Fisher
 State of Minnesota
 Harry J. & Nancy Obariski
 Bernard V. & Mary Gray Hafby
 Richard W. & Alice H. Dunson
 Norman J. C. Rogers
 " "
 Richard W. & Alice H. Dunson 1/2 int.
 Bernard V. & Mary Gray Hafby 1/2 int.
 Robert O. & Mona T. Hafby



Lot 7 28-140-28

Cass County, Minnesota, for Taxes for the Year 1963.

SOLD FOR TAXES	VALUATIONS BY SCHOOL DISTRICTS AS EQUALIZED BY DEPARTMENT OF TAXATION						Tax including State Homestead	State Tax on Non-Homestead	SPECIAL TAXES	SPECIAL TAXES	TOTAL TAXES	PAID	WHEN PAID	Number of Receipt	March Settlement 1964	June Settlement 1964	Penalty	November Settlement 1964	Penalty	Collections to First Monday in January 1965	Penalty	Delinquent on First Monday in January 1965	Total Delinquent Tax and Penalty	REMARKS	
	District No.	District No.	District No.	District No.	District No.	District No.																			Dollars
1							1412	54			1466	1	2nd HALF PAID OCT 9 1964 1st HALF PAID MAY 15 1964	18469		733		733					19308	20574	
2												2													
3	VOID FOR TAXES						80				1884	3	PAID IN FULL JUL 6 1964	16728										20694	
4	VOID FOR TAXES						30				706	4												26695	
5											2554	5	2nd HALF PAID OCT 2 1964 1st HALF PAID MAY 8 1964	19395		1322		1322					18214	20442	
6							660				15536	6	2nd HALF PAID OCT 2 1964 1st HALF PAID MAY 29 1964	19395									18272	20588	
7							130				3060	7	2nd HALF PAID OCT 2 1964 1st HALF PAID MAY 29 1964	19395											
8							90				2118	8	2nd HALF PAID OCT 2 1964 1st HALF PAID MAY 29 1964	19395											
9							90				2118	9	2nd HALF PAID OCT 2 1964 1st HALF PAID MAY 29 1964	19395											
10											1532	10	PAID IN FULL APR 20 1964	6977		1586								20630	
11							390				9180	11	2nd HALF PAID SEP 2 1964 1st HALF PAID APR 10 1964	17896		9528		4764		4764			18291	20631	
12												12													
13							510				12004	13	Balance Paid OCT 23 1964 Part Paid MAY 28 1964	17613		12458		6458		6000			18290	20632	
14												14													
15												15													
16							160				3766	16	PAID IN FULL FEB 3 1964	1211		3908		5494							20633
17											1532	17	PAID IN FULL FEB 3 1964	1211		1586									
18												18													
19												19	Part Paid MAY 29 1964 Part Paid MAY 12 1964	12736											
20							900				21184	20	Part Paid MAY 12 1964 Part Paid FEB 17 1964 Balance Paid OCT 30 1964	8289		21986		7744		6498		4872			2nd int 18289 - Bernard Hafby Richard Dunson 20670 Robert Hafby 20670
							3100				72968						81546		13238		36081		31495	732	

Assessment Roll and Tax List of Real Property in the Town of Wabedo

* Indicate Type of Property: R-Residential, C-Commercial, I-Industrial, U-Utility, F-Farm, L-Lakeshore, T-Timber, M-Mineral

Form SCD MILLER-DAVIS CO., MINNEAPOLIS

Table with columns: IN WHOSE NAME ASSESSED, DESCRIPTION OF PROPERTY, TRUE AND FULL VALUATIONS, ASSESSED VALUATIONS, and FINAL EQUALIZED VALUE. Includes entries for State of Minnesota and Kikapoo Lodge, Inc.

Cass County, Minnesota, for Taxes for the Year 1963.

Table with columns: VALUATIONS BY SCHOOL DISTRICTS AS EQUALIZED BY DEPARTMENT OF TAXATION, TAXES, PAID, WHEN PAID, and REMARKS. Includes handwritten entries for tax amounts and payment dates.

Assessment Roll and Tax List of Real Property in the Town of Wabedo

* Indicate Type of Property: R-Residential, C-Commercial, I-Industrial, U-Utility, F-Farm, L-Lakeshore, T-Timber, M-Mineral

Form 500 MILLER-DAVIS CO., MINNEAPOLIS

IN WHOSE NAME ASSESSED	SUBDIVISION	DESCRIPTION OF PROPERTY		No. School District	Indicate Homestead Yes or No	Agricultural Rec. Yes or No	Indicate Type of Property	TRUE AND FULL VALUATIONS															SOLD FOR TAXES	Tax Including State Homestead	State Tax on Non-Homestead	SPECIAL TAXES	SPECIAL TAXES	TOTAL TAXES	PAID	WHEN PAID	Number of Receipt	March Settlement 1964	June Settlement 1964	Penalty	November Settlement 1964	Penalty	Collections to First Monday in January 1965	Penalty	Delinquent on First Monday in January 1965	Total Delinquent Tax and Penalty	REMARKS														
		Sec. or Lot	Town or Block					Acres	100ths	LAND Exclusive of Structures and Improvements	BUILDINGS and Other Structures	MACHINERY Permanently Attached to Real Estate	TOTAL True and Full Value	RURAL		ALL OTHER		MACHINERY Permanently Attached to Real Estate	Seasonal and Recreational Cabins	TOTAL ASSESSED VALUE	Total Assessed Value as Equalized by the Board of Review	Dollars																				Dollars	Dollars	Dollars	Dollars	Dollars	Dollars	Dollars	Dollars	Dollars	Dollars	Dollars	Dollars	Dollars	
								RURAL		ALL OTHER																																													
		Rate	Rate					Rate	Rate	Rate	Rate	Rate	Rate	Rate	Rate	Rate	Rate	Rate	Rate	Rate	Rate	Rate																				Rate	Rate	Rate	Rate	Rate	Rate	Rate	Rate	Rate	Rate	Rate	Rate	Rate	Rate
State of Minnesota	1	NW 1/4 of NE 1/4		31	140	28		271																																															
State of Minnesota	2	NW 1/4 of NE 1/4																																																					
State of Minnesota	3	SW 1/4 of NE 1/4																																																					
State of Minnesota	4	SE 1/4 of NE 1/4																																																					
	5																																																						
Kickapoo Lodge, Inc.	6	N 1/2 of GOVT LOT 1		12			70	70	L									240		61.30	214			6344	6	PAID IN FULL APR 20 1964						20496																							
"	7	N 1/2 of GOVT LOT 1		8	75		70	70	T									45		1060	40			1100	7	PAID IN FULL APR 20 1964			11158																										
"	8	GOVT LOT 2 less 2.8 ac.		22	65		70	70	T									82		1930	74			2004	8	PAID IN FULL APR 20 1964																													
"	9	GOVT LOT 3		39	50		70	70	T									70		1648	62			1710	9	PAID IN FULL APR 20 1964																													
Agnes M. Gunn	10	2.8 ac. in NW cor. of GOVT LOT 2		2	80		70	70	L									750		17654	670			18324	10	PAID IN FULL APR 20 1964	7111		18324			20643																							
State of Minnesota	11	NE 1/4 of SW 1/4																																																					
Kickapoo Lodge, Inc.	12	GOVT LOT 4		24	25		70	70	T										87		2048	78			2126	12	PAID IN FULL APR 20 1964						20496																						
"	13	GOVT LOT 5		34			70	70	T										70		1648	62			1710	13	PAID IN FULL APR 20 1964			3836																									
State of Minnesota	14	SE 1/4 of SW 1/4																																																					
State of Minnesota	15																																																						
State of Minnesota	16	NE 1/4 of SE 1/4																																																					
State of Minnesota	17	NW 1/4 of SE 1/4																																																					
State of Minnesota	18	SW 1/4 of SE 1/4																																																					
State of Minnesota	19	SE 1/4 of SE 1/4																																																					
	20																																																						
																				1104						33319																													
																				240 = 1344						25989																													
																				61.30																																			
																				1200																																			
																				321.19																																			

Assessment Roll and Tax List of Real Property in the Town of Wabedo

* Indicate Type of Property: R-Residential, C-Commercial, I-Industrial, U-Utility, F-Farm, L-Lakeshore, T-Timber, M-Mineral

Cass County, Minnesota, for Taxes for the Year 1963.

Form SCD - MILLER-DAVIS CO., MINNEAPOLIS

Table with columns for Property Description, Valuations (True and Full, Assessed), Taxes (SOLD FOR TAXES, VALUATIONS BY SCHOOL DISTRICTS), and Payments (PAID, WHEN PAID). Includes handwritten entries for names like Leo L. Stevens and Harold L. & Norma J. Blakeman.

Assessment Roll and Tax List of Real Property in the Town of Wabedo, Minnesota

Cass County, Minnesota, for Taxes for the Year 1963.

Form SCD - MILLER-DAVIS CO., MINNEAPOLIS

Main table with columns: IN WHOSE NAME ASSESSED, DESCRIPTION OF PROPERTY, TRUE AND FULL VALUATIONS, ASSESSED VALUATIONS, VALUATIONS BY SCHOOL DISTRICTS AS EQUALIZED BY DEPARTMENT OF TAXATION, TAX INCLUDING STATE HOMESTEAD, SPECIAL TAXES, TOTAL TAXES, PAID, WHEN PAID, Number of Receipt, March Settlement 1964, June Settlement 1964, Penalty, November Settlement 1964, Collections to First Monday in January 1965, Delinquent on First Monday in January 1965, Total Delinquent Tax and Penalty, REMARKS.

Harry Minnie B. & Jane E. Engelhart

C.L. & Esther R. Hopkins

Earl & Beatrice E. Briggs

Donald M. Dove, William R. Babcock & Eva B. Hemingway

Ankar B. & Margaret R. Harbo

Lloyd A. Blomberg

Wm. Dave Babcock 1/4 int. Eva Babcock Hemingway 1/4 int. Donald M. & Katherine B. Dove 1/2 int.

Longville Timbers Co.

Balance Paid MAY 7 1964 9282 Part Paid APR 21 1964 7180

2nd HALF PAID OCT 29 1964 20060 1st HALF PAID MAY 29 1964 12872

PAID IN FULL MAY 15 1964 9844

PAID IN FULL MAY 14 1964 11019

PAID IN FULL APR 20 1964 6970

PAID IN FULL APR 20 1964 2198

PAID IN FULL MAY 15 1964 9844

2nd HALF PAID AUG 13 1964 1st HALF PAID MAY 29 1964 2nd HALF PAID AUG 13 1964 1st HALF PAID MAY 29 1964

2nd HALF PAID AUG 13 1964 1st HALF PAID MAY 29 1964

1st HALF PAID MAY 29 1964 2nd HALF PAID AUG 13 1964

1st HALF PAID MAY 29 1964 2nd HALF PAID AUG 13 1964

53830 2298 56128 2120

Vertical text on the right edge of the page, possibly a page number or index.

Assessment Roll and Tax List of Real Property in the Town of Wabed,
* Indicate Type of Property: R-Residential, C-Commercial, I-Industrial, U-Utility, F-Farm, L-Lakeshore, T-Timber, M-Mineral

Form 500 - MILLER-DAVIS CO., MINNEAPOLIS

IN WHOSE NAME ASSESSED	DESCRIPTION OF PROPERTY				Indicate Homestead Yes or No	Acreage Rec Yes or No	* Indicate Type of Property	TRUE AND FULL VALUATIONS				ASSESSED VALUATIONS							FINAL EQUALIZED VALUE	
	SUBDIVISION	Sec. or Lot	Town or Block	Number of Acres of Land				LAND Exclusive of Structures and Improvements	BUILDINGS and Other Structures	MACHINERY Permanently Attached to Real Estate	TOTAL True and Full Value	RURAL			ALL OTHER			TOTAL ASSESSED VALUE		Total Assessed Value as Equalized by the Board of Review
												Homestead Up to \$4,000	Over \$4,000 and Non-Homestead	Timber Land Class 3e	Homestead Up to \$4,000	Over \$4,000 and Non-Homestead	MACHINERY Permanently Attached to Real Estate			

Cass County, Minnesota, for Taxes for the Year 1963.

SOLD FOR TAXES	VALUATIONS BY SCHOOL DISTRICTS AS EQUALIZED BY DEPARTMENT OF TAXATION						Tax Including State Homestead	State Tax on Non-Homestead	SPECIAL TAXES	SPECIAL TAXES	TOTAL TAXES	PAID	WHEN PAID	Number of Receipt	March Settlement 1964	June Settlement 1964	Penalty	November Settlement 1964	Penalty	Collections to First Monday in January 1965	Penalty	Delinquent on First Monday in January 1965	Total Delinquent Tax and Penalty	REMARKS
	District No.	District No.	District No.	District No.	District No.	District No.																		
	Rate	Rate	Rate	Rate	Rate	Rate																		

State of Minnesota
State of Minnesota
State of Minnesota
State of Minnesota

State of Minnesota
State of Minnesota
State of Minnesota
State of Minnesota
State of Minnesota
State of Minnesota
State of Minnesota
State of Minnesota
State of Minnesota
State of Minnesota
State of Minnesota
State of Minnesota
State of Minnesota
State of Minnesota

1 N ~~-----~~ GOVT LOT 1 36 140 28 207
2 NW 1/4 of NE 1/4
3 SW 1/4 of NE 1/4
4 SE 1/4 of NE 1/4

6 NE 1/4 of NW 1/4
7 NW 1/4 of NW 1/4
8 SW 1/4 of NW 1/4
9 SE 1/4 of NW 1/4

11 NE 1/4 of SW 1/4
12 NW 1/4 of SW 1/4
13 SW 1/4 of SW 1/4
14 SE 1/4 of SW 1/4

16 N ~~-----~~ GOVT LOT 2
17 NW 1/4 of SW 1/4
18 SW 1/4 of SW 1/4
19 SE 1/4 of SW 1/4

1
2
3
4
5
6
7
8
9
10
11
12
13
14
15
16
17
18
19
20

PAID	WHEN PAID	Number of Receipt	March Settlement 1964	June Settlement 1964	Penalty	November Settlement 1964	Penalty	Collections to First Monday in January 1965	Penalty	Delinquent on First Monday in January 1965	Total Delinquent Tax and Penalty
------	-----------	-------------------	-----------------------	----------------------	---------	--------------------------	---------	---	---------	--	----------------------------------

WARDEN PARK
WARDEN SPRINGS
VA POINTE
WADSWORTH ADDY
WINNIE CALDWELL BEACE
S BEACE
WARDEN'S MILL

Assessment Roll and Tax List of Real Property in the Town of Wade

* Indicate Type of Property: R-Residential, C-Commercial, I-Industrial, U-Utility, F-Farm, L-Lakeshore, T-Timber, M-Mineral

Form 50 MILLER-DAVIS CO., MINNEAPOLIS

Table with columns: IN WHOSE NAME ASSESSED, DESCRIPTION OF PROPERTY, TRUE AND FULL VALUATIONS, ASSESSED VALUATIONS, and FINAL EQUALIZED VALUE. Includes entries for J. E. Armstrong, James B. Armstrong, Bertrice M. Anderson, Lon S. & Cleo R. Hamilton, Ellen & Clarence C. Fitzsimmons, Clarence B. & Sophie Catrill, C. P. & Mertie Mosen, Leo W. & Lillian M. Wilson.

Cass County, Minnesota, for Taxes for the Year 1963.

Table with columns: VALUATIONS BY SCHOOL DISTRICTS AS EQUALIZED BY DEPARTMENT OF TAXATION, Tax Including State Homestead, State Tax on Non-Homestead, SPECIAL TAXES, TOTAL TAXES, PAID, WHEN PAID, Number of Receipt, March Settlement 1964, June Settlement 1964, Penalty, November Settlement 1964, Collections to First Monday in January 1965, Delinquent on First Monday in January 1965, Total Delinquent Tax and Penalty, REMARKS. Includes entries for SOLD FOR TAXES and various payment dates like JUL 18 1964, MAY 29 1964.

3972 493494 3538 97032 41591 53461

Assessment Roll and Tax List of Real Property in the Town of Wabedo

* Indicate Type of Property: R-Residential, C-Commercial, I-Industrial, U-Utility, F-Farm, L-Lakeshore, T-Timber, M-Mineral

Form 50 MILLER-DAVIS CO., MINNEAPOLIS

Table with columns: IN WHOSE NAME ASSESSED, SUBDIVISION, Gov't Lots 2+3 Sec. 30. 148-28, No. School District, Indicate Year, Indicate Type of Property, TRUE AND FULL VALUATIONS (LAND, BUILDINGS, MACHINERY, TOTAL), ASSESSED VALUATIONS (RURAL, ALL OTHER, MACHINERY, Seasonal and Recreational Cabins, TOTAL ASSESSED VALUE), Total Assessed Value as Equalized by the Board of Review, FINAL EQUALIZED VALUE.

Cass County, Minnesota, for Taxes for the Year 1963.

Table with columns: VALUATIONS BY SCHOOL DISTRICTS AS EQUALIZED BY DEPARTMENT OF TAXATION (District No., Rate, Mills), Tax Including State Homestead, State Tax on Non-Homestead, SPECIAL TAXES, TOTAL TAXES, PAID, WHEN PAID, Number of Receipt, March Settlement 1964, June Settlement 1964, Penalty, November Settlement 1964, Collections to First Monday in January 1965, Delinquent on First Monday in January 1965, Total Delinquent Tax and Penalty, REMARKS.

Assessment Roll and Tax List of Real Property in the Town of Wabedo

* Indicate Type of Property: R-Residential, C-Commercial, I-Industrial, U-Utility, F-Farm, L-Lakeshore, T-Timber, M-Mineral

Form 50 - MILLER-DAVIS CO., MINNEAPOLIS

Table with columns: IN WHOSE NAME ASSESSED, DESCRIPTION OF PROPERTY, TRUE AND FULL VALUATIONS, ASSESSED VALUATIONS, FINAL EQUALIZED VALUE. Includes handwritten entries for Harry & Minnie B. Engelhart.

Cass County, Minnesota, for Taxes for the Year 1963.

Table with columns: VALUATIONS BY SCHOOL DISTRICTS AS EQUALIZED BY DEPARTMENT OF TAXATION, TAX INCLUDING STATE HOMESTEAD, SPECIAL TAXES, TOTAL TAXES, PAID, WHEN PAID, Number of Receipt, March Settlement, June Settlement, Penalty, November Settlement, Collections to First Monday in January 1965, Delinquent on First Monday in January 1965, Total Delinquent Tax and Penalty, REMARKS. Includes handwritten totals and dates.

Assessment Roll and Tax List of Real Property in the

Town of Wake

* Indicate Type of Property: R-Residential, C-Commercial, I-Industrial, U-Utility, F-Farm, L-Lakeshore, T-Timber, M-Mineral

Cass County, Minnesota, for Taxes for the Year 1963.

Form 5C MILLER-DAVIS CO., MINNEAPOLIS

WARD PASSE

100 SPRINGS

IOWA POINT

MANDER'S ADD'N

WINNIE CHAPMAN BEACH

IN WHOSE NAME ASSESSED	DESCRIPTION OF PROPERTY	No. School District	Indicate Homestead Yes or No	Agricultural Yes or No	Indicate Type of Property	TRUE AND FULL VALUATIONS											FINAL EQUALIZED VALUE		
						LAND EXCLUSIVE OF STRUCTURES AND IMPROVEMENTS					BUILDINGS AND OTHER STRUCTURES					MACHINERY PERMANENTLY ATTACHED TO REAL ESTATE		TOTAL TRUE AND FULL VALUE	
						ASSESSED	VALUATIONS	VALUATIONS	VALUATIONS	VALUATIONS	VALUATIONS	VALUATIONS	VALUATIONS	VALUATIONS	VALUATIONS	VALUATIONS		VALUATIONS	
<i>Part of GOVT LOTS 3+4 Sec. 28-140-28</i>																			
<i>Norman F.C. Rogers</i>	<i>1 less E. 100'</i>	<i>Un</i>	<i>770</i>	<i>Yes</i>	<i>L</i>														
<i>Harm & Vivian Eltmans</i>	<i>E. 100' of lot 1</i>		<i>770</i>	<i>No</i>	<i>L</i>														
<i>Robert E. & Ruth E. Chapman</i>	<i>2 less E 50'</i>		<i>770</i>	<i>No</i>	<i>L</i>														
<i>Norman F.C. Rogers</i>	<i>E. 50' of 2</i>		<i>770</i>	<i>No</i>	<i>L</i>														
<i>Robert E. & Ruth E. Chapman</i>	<i>3</i>		<i>770</i>	<i>No</i>	<i>L</i>														
<i>" " "</i>	<i>4</i>		<i>770</i>	<i>Yes</i>	<i>R</i>														
<i>Wm. L. & V. Beatrice Burnson</i>	<i>5</i>		<i>770</i>	<i>No</i>	<i>L</i>														
<i>" " "</i>	<i>6</i>		<i>770</i>	<i>No</i>	<i>L</i>														
<i>Sam L. & Dorothy M. Loftstrom</i>	<i>7</i>		<i>770</i>	<i>Yes</i>	<i>L</i>														
<i>Arne N. & Carol Bangsjoen</i>	<i>8</i>		<i>770</i>	<i>No</i>	<i>L</i>														

SOLD FOR TAXES	VALUATIONS BY SCHOOL DISTRICTS AS EQUALIZED BY DEPARTMENT OF TAXATION						Tax Including State Homestead	State Tax on Non-Homestead	SPECIAL TAXES	SPECIAL TAXES	TOTAL TAXES	PAID	WHEN PAID	Number of Receipt	March Settlement 1964	June Settlement 1964	November Settlement 1964	Penalty	Collections to First Monday in January 1965	Penalty	Delinquent on First Monday in January 1965	Total Delinquent Tax and Penalty	REMARKS	
	District No.	District No.	District No.	District No.	District No.	District No.																		
	Rate	Rate	Rate	Rate	Rate	Rate																		
	<i>60</i>																							
<i>1 SOLD FOR TAXES</i>							<i>14.12</i>	<i>54</i>			<i>14.66</i>	<i>PAID IN FULL JUN 15 1964</i>	<i>14534</i>									<i>21770</i>		
<i>2</i>		<i>60</i>					<i>15.32</i>	<i>54</i>			<i>15.86</i>	<i>2 PAID IN FULL MAY 22 1964</i>	<i>11550</i>									<i>20440</i>		
<i>3 SOLD FOR TAXES</i>							<i>15.32</i>	<i>54</i>			<i>15.86</i>											<i>20695</i>		
<i>4 SOLD FOR TAXES</i>							<i>7.66</i>	<i>26</i>			<i>7.92</i>	<i>4 PAID IN FULL JUN 15 1964</i>	<i>14534</i>									<i>21770</i>		
<i>5 SOLD FOR TAXES</i>							<i>19.16</i>	<i>66</i>			<i>19.82</i>											<i>20695</i>		
<i>6 SOLD FOR TAXES</i>		<i>136</i>					<i>32.02</i>	<i>122</i>			<i>33.24</i>													
<i>7</i>							<i>19.16</i>	<i>66</i>			<i>19.82</i>	<i>7 PAID IN FULL MAY 14 1964</i>										<i>20441</i>		
<i>8</i>							<i>19.16</i>	<i>66</i>			<i>19.82</i>	<i>8 PAID IN FULL MAY 14 1964</i>	<i>11018</i>											
<i>9</i>		<i>720</i>					<i>169.48</i>	<i>642</i>			<i>175.90</i>	<i>9 2ND HALF PAID OCT 2 1964</i>	<i>19335</i>									<i>20442</i>		
<i>10</i>							<i>19.16</i>	<i>66</i>			<i>19.82</i>	<i>1st HALF PAID MAY 8 1964</i>	<i>7403</i>									<i>20630</i>		

KONFIDENTIAL BEACH
FRANK M. MERO FIVE
ISLAND VIEW
HAYEN
DR. R. M. M...
STURGES BEACH
HARRIS L...

Assessment Roll and Tax List of Real Property in the Town of Wakeo

* Indicate Type of Property: R-Residential, C-Commercial, I-Industrial, U-Utility, F-Farm, L-Lakeshore, T-Timber, M-Mineral

Form 50 MILLER-DAVIS CO., MINNEAPOLIS

Table with columns: IN WHOSE NAME ASSESSED, DESCRIPTION OF PROPERTY, TRUE AND FULL VALUATIONS, ASSESSED VALUATIONS, and FINAL EQUALIZED VALUE. Includes handwritten entries for James Stuart, Joseph M. & Adele C. Fitzsimmons, and Northlake Investments of Minnesota, Inc.

Cass County, Minnesota, for Taxes for the Year 1963.

Table with columns: VALUATIONS BY SCHOOL DISTRICTS AS EQUALIZED BY DEPARTMENT OF TAXATION, Tax Including State Homestead, SPECIAL TAXES, TOTAL TAXES, PAID, WHEN PAID, Number of Receipt, March Settlement, June Settlement, November Settlement, Collections to First Monday in January 1965, Delinquent on First Monday in January 1965, Total Delinquent Tax and Penalty, and REMARKS. Includes handwritten tax amounts and payment dates.

WABEIO PASS, EDO SPRINGS, TOWA POINT, MANDER'S ADD'N, CHAPMAN BEACH, STUART'S BEACH

KONFELDT'S BEACH, STUART'S BEACH, ISLAND VIEW, HAYEN, DR. S. W. MANDER'S

Assessment Roll and Tax List of Real Property in the Town of Wakefield

Table with columns for Property Description, Valuations (Rural, All Other, Machinery, etc.), Assessed Values, Taxes (SOLD FOR TAXES, SPECIAL TAXES, TOTAL TAXES), and Payment Status (PAID, WHEN PAID, etc.). Includes handwritten entries for owners like Leonard S. + Virginia Chapin and Mike S. + Clara S. Lang.

Assessment Roll and Tax List of Real Property in the Town of Wabedo

* Indicate Type of Property: R-Residential, C-Commercial, I-Industrial, U-Utility, F-Farm, L-Lakeshore, T-Timber, M-Mineral

Cass County, Minnesota, for Taxes for the Year 1963.

Table with columns: IN WHOSE NAME ASSESSED, DESCRIPTION OF PROPERTY, TRUE AND FULL VALUATIONS, ASSESSED VALUATIONS, VALUATIONS BY SCHOOL DISTRICTS AS EQUALIZED BY DEPARTMENT OF TAXATION, TAX INCLUDING STATE HOMESTEAD, SPECIAL TAXES, TOTAL TAXES, PAID, WHEN PAID, Number of Receipt, March Settlement 1964, June Settlement 1964, November Settlement 1964, Collections to First Monday in January 1965, Delinquent on First Monday in January 1965, Total Delinquent Tax and Penalty, REMARKS.

Assessment Roll and Tax List of Real Property in the

Town of Wahedo

* Indicate Type of Property: R-Residential, C-Commercial, I-Industrial, U-Utility, F-Farm, L-Lakeshore, T-Timber, M-Mineral

Table with columns: IN WHOSE NAME ASSESSED, DESCRIPTION OF PROPERTY, TRUE AND FULL VALUATIONS, ASSESSED VALUATIONS, and FINAL EQUALIZED VALUE. Includes entries for Johnson, Sabaka, and Spornberg families.

Cass County, Minnesota, for Taxes for the Year 1963.

Table with columns: SOLD FOR TAXES, VALUATIONS BY SCHOOL DISTRICTS AS EQUALIZED BY DEPARTMENT OF TAXATION, Tax Including State Homestead, SPECIAL TAXES, TOTAL TAXES, PAID, WHEN PAID, Number of Receipt, March Settlement, June Settlement, Penalty, November Settlement, Penalty, Collections to First Monday in January 1965, Delinquent on First Monday in January 1965, Total Delinquent Tax and Penalty, REMARKS. Includes handwritten notes like 'Abate #9258'.

Assessment Roll and Tax List of Real Property in the Town of Wabedo

* Indicate Type of Property: R-Residential, C-Commercial, I-Industrial, U-Utility, F-Farm, L-Lakeshore, T-Timber, M-Mineral

Form 50 MILLER-DAVIS CO., MINNEAPOLIS

Table with columns for Description of Property, True and Full Valuations, Assessed Valuations, and Final Equalized Value. Includes handwritten entries for Leonard + Ida Tabaka.

Cass County, Minnesota, for Taxes for the Year 1963.

Table with columns for School Districts, Tax Including State Homestead, State Tax on Non-Homestead, Special Taxes, Total Taxes, PAID, WHEN PAID, and REMARKS. Includes handwritten entries for Abate 19258.

Vertical text on the left margin: BEARDSLEY, WARDEN, CREST ACRES, MA ISLAND VIEW, E CHAPMAN BEACH, WILBERT'S BEACH, WILBERT'S BEACH, BIRCH HAVEN, DUNN'S HARBOR'S, BIRCH HAVEN, BROOKLYN WALKER'S.

Vertical text on the right margin: BIRCH HAVEN, DUNN'S HARBOR'S, BIRCH HAVEN, BROOKLYN WALKER'S.

Assessment Roll and Tax List of Real Property in the Town of Wabedo, Minnesota

* Indicate Type of Property: R-Residential, C-Commercial, I-Industrial, U-Utility, F-Farm, L-Lakeshore, T-Timber, M-Mineral

Form 50 - MILLER-DAVIS CO., MINNEAPOLIS

Table with columns: IN WHOSE NAME ASSESSED, DESCRIPTION OF PROPERTY, TRUE AND FULL VALUATIONS, ASSESSED VALUATIONS, FINAL EQUALIZED VALUE.

Willis H. & Daisy B. Manders
Clyde D. & Henrietta Merlat
Willis H. & Daisy B. Manders

1st Add'n. Mander's Muskie Bay
SUBDIVISION
Part of GOV'T LOT 6, Sec. 26-140-28
Part of NW 1/4 of NW 1/4 Sec. 35-140-28

Cass County, Minnesota, for Taxes for the Year 1963.

Table with columns: VALUATIONS BY SCHOOL DISTRICTS AS EQUALIZED BY DEPARTMENT OF TAXATION, Tax Including State Homestead, SPECIAL TAXES, TOTAL TAXES, PAID, WHEN PAID, Number of Receipt, March Settlement, June Settlement, November Settlement, Collections to First Monday in January, Delinquent on First Monday in January, Total Delinquent Tax and Penalty, REMARKS.

1 49 1252 44 1296 1
2 49 1252 44 1296 2
3 49 1252 44 1296 3
4 49 1252 44 1296 4
5 49 1252 44 1296 5
6 50 1276 44 1320 6
7 50 1276 44 1320 7
8 50 1276 44 1320 8
9 50 1276 44 1320 9
10 50 1276 44 1320 10 PAID IN FULL JUN 25 1964
11 50 1276 44 1320 11 PAID IN FULL JUN 25 1964
12 50 1276 44 1320 12
13
14
15
16
17
18
19
20

595 74 151 92 5 28 157 20 26 40 130 80

Assessment Roll and Tax List of Real Property in the Town of Wabedo

* Indicate Type of Property: R-Residential, C-Commercial, I-Industrial, U-Utility, F-Farm, L-Lakeshore, T-Timber, M-Mineral

Form 5C - MILLER-DAVIS CO., MINNEAPOLIS

Table with columns: IN WHOSE NAME ASSESSED, DESCRIPTION OF PROPERTY, TRUE AND FULL VALUATIONS, ASSESSED VALUATIONS, FINAL EQUALIZED VALUE. Includes entries for Mander's Broadwater Beach Subdivision, lots 1-12, with names like Ralph A. & Selma O. & Willis H. & Daisy Manders.

Cass County, Minnesota, for Taxes for the Year 1963.

Table with columns: VALUATIONS BY SCHOOL DISTRICTS AS EQUALIZED BY DEPARTMENT OF TAXATION, Tax including State Homestead, SPECIAL TAXES, TOTAL TAXES, PAID, WHEN PAID, Number of Receipt, March Settlement 1964, June Settlement 1964, November Settlement 1964, Collections to First Monday in January 1965, Delinquent on First Monday in January 1965, Total Delinquent Tax and Penalty, REMARKS. Includes tax details for lots 1-12.

Assessment Roll and Tax List of Real Property in the Town of Wadena

* Indicate Type of Property: R-Residential, C-Commercial, I-Industrial, U-Utility, F-Farm, L-Lakeshore, T-Timber, M-Mineral

Form 50 - MILLER-DAVIS CO., MINNEAPOLIS

IN WHOSE NAME ASSESSED	DESCRIPTION OF PROPERTY				No. School District	Indicate Homestead Yes or No	Agri. or Recr. Yes or No	Indicate Type of Property	TRUE AND FULL VALUATIONS			ASSESSED VALUATIONS							FINAL EQUALIZED VALUE				
	SUBDIVISION	Sec. or Lot	Town or Block	Rng.					Number of Acres of Land	LAND Exclusive of Structures and Improvements	BUILDINGS and Other Structures	MACHINERY Permanently Attached to Real Estate	TOTAL True and Full Value	RURAL			ALL OTHER			MACHINERY Permanently Attached to Real Estate	Seasonal and Recreational Cabins	TOTAL ASSESSED VALUE	Total Assessed Value as Equalized by the Board of Review
														Acres	100ths	Homestead Up to \$4,000 20%	Over \$4,000 and Non-Homestead 33 1/4%	Timber Land Class 3e 20%					
									Dollars	Dollars	Dollars	Dollars	Dollars	Dollars	Dollars	Dollars	Dollars	Dollars	Dollars				
	Manders Little Boy Block																						
	PART 07 GOVT LOT 4 Sec 11-140-28																						
Willis H + Daisy Q Manders + Ralph G + Selma O Manders																							
" " " " " " " "																							
Orvil + Dorothy Carpenter																							
Willis H. + Daisy Q. Manders, Ralph G. + Selma O. Manders																							
" " " " " " " "																							
" " " " " " " "																							
John A + Betty Kunderst																							
Nicholas A. Wenzel + Eva Wenzel																							
Willis H + Daisy Q Manders + Ralph G + Selma O Manders																							

7609.15

Cass County, Minnesota, for Taxes for the Year 1963.

SOLD FOR TAXES	VALUATIONS BY SCHOOL DISTRICTS AS EQUALIZED BY DEPARTMENT OF TAXATION						Tax including State Homestead	State Tax on Non-Homestead	SPECIAL TAXES	SPECIAL TAXES	TOTAL TAXES	PAID	WHEN PAID	Number of Receipt	March Settlement 1964	June Settlement 1964	Penalty	November Settlement 1964	Penalty	Collections to First Monday in January 1965	Penalty	Delinquent on First Monday in January 1965	Total Delinquent Tax and Penalty	REMARKS
	District No.	District No.	District No.	District No.	District No.	District No.																		
	Rate	Rate	Rate	Rate	Rate	Rate																		
	4	4623	20471 = 25094																					
	7	74263	48730 = 122993																					
		78886	69201 = 148087																					

18 18,568.16 70 17,672.50 1997.04 37,337.70