

WABEDO
1925 - TAX LIST

Wabedo

Add Deduct

\$ 11.07 ✓

9.20 ✓

62.92 ✓

6.20 ✓

✓

✓

7/3/26 a/c bldg on 5 ac of S 1/2 of Lot 2, Sec. 17, omitted

6/2/26 - a/c refund of tax pd. on NW 38", Sec. 3

Refund 11/1/26 on NW 26" and E 27 NW" Sec 4-140-28

17/3/26 - a/c B. & R. B. Laxton pers. prop. tax

Auditor's Office, Cass County, Minnesota.

I, A. A. CATER, Auditor of Cass County and State of Minnesota, do hereby Certify that the following is a correct list of the taxes levied on the Real and Personal Property in the Town of Wabedo in said County, for the year 1925.

Witness my hand and official seal this 31st day of December, 1925

A. A. Cater County Auditor.

(SEAL)

Treasurer's Office, Cass County, Minnesota.

Received this, the first Monday, being the 1st day of January, A. D. 1926, of A. A. CATER, Auditor of Cass County, Minnesota, the Tax List of all taxable Real and Personal Property in the Town of Wabedo in said County, for the year 1925, as specified above, and amounting to Eight thousand four hundred forty seven & thirty cents DOLLARS.

W. T. McKeown County Treasurer.

Office of County Treasurer, Cass County, Minnesota.

To A. A. CATER, County Auditor.

Sir: I herewith return to you the Tax List for the Town of Wabedo in said County, for the year 1925, heretofore received from you. I certify that I have compared the same with the duplicate receipts in your office, and have written opposite the amount of each tax so receipted the words "One Half Paid," or "Paid in Full," as the case may be, and the number of my receipt given in discharge of said tax, and each tract or lot of Real Property against which the taxes remain unpaid is delinquent for said year.

W. T. McKeown County Treasurer.

Auditor's Office, Cass County, Minnesota.

I hereby certify that on the first Monday in January, 1926, I received of W. T. McKEOWN, County Treasurer, the Tax List of the Town of Wabedo in said County, for the year 1925, and that I have compared the said list with the statements receipted for by said County Treasurer, which are on file in my office, and that each tract or lot of Real property therein against which the taxes, or any part thereof remains unpaid, are delinquent for said year. I further certify that the following statement of taxes collected, distributed and unpaid or cancelled are true and correct:

A. A. Cater County Auditor.

(SEAL)

Av. val. per ac. - \$4.44

Levied in the

Lewistown

TABULAR SCHEDULE OF VALUATIONS,

of *Wabedo*

RATES AND TAXES

Cass County, State of Minnesota

No. School District	Valuation of Money and Credits Dollars	VALUATION BY SCHOOL DISTRICTS				RATE OF STATE TAXES					RATE OF COUNTY TAXES										RATE OF TOWN, CITY OR VILLAGE TAXES										RATE OF SCHOOL TAXES	
		Value of Land other than Town Lots Including Structures Dollars	Value of Town and City Lots Including Structures Dollars	Personal Property Dollars	Total Value of all Property except Money and Credits Dollars	State Rev. Mills	State Sch'l Mills	Tech. Ins. & Rel. Ed. Mills	Minn. Gen'l. Hosp. Mills	Total Rate of State Tax Mills	Co. Rev. Mills	Co. R. & B. Mills	Co. Poor Mills	Co. Bond and Int. Mills	Co. Sinking Mills	Co. Bldg. Mills	Co. Maint. Mills	Total Rate of County Tax Mills	Town Rev. Mills	Town R. & B. Mills	Town Mill Drags. Mills	Town State Loan Mills	Town Bldg. Mills	Town Fire Mills	Town Phone Mills	Total Rate of Town, City or Village Tax Mills	Local Mill	Special Mill				
																													Total Rate of All Taxes Mills			
<i>127</i>		<i>71954</i>	<i>7705</i>	<i>7094</i>	<i>76753</i>	<i>6.42</i>	<i>1.23</i>	<i>.05</i>	<i>.03</i>	<i>7.73</i>	<i>5.</i>	<i>8.</i>	<i>7.09</i>	<i>9.11</i>	<i>2.</i>	<i>31.7</i>	<i>3.78</i>	<i>4.81</i>	<i>1.</i>	<i>3.09</i>	<i>2.62</i>	<i>4.93</i>	<i>4.93</i>		<i>34.64</i>	<i>1.</i>	<i>30.07</i>	<i>4.67</i>	<i>1.45</i>	<i>37.19</i>	<i>11.07</i>	

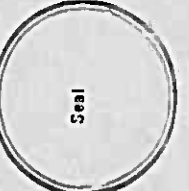
TAXES LEVIED				LOCAL 1 MILL AND SPECIAL SCHOOL TAXES BY DISTRICTS		ALL OTHER TAXES	
Local 1 Mill	Special	Interest	Sinking	Total School Tax	FUNDS	Rate	AMOUNTS
<i>1.</i>	<i>30.07</i>	<i>4.67</i>	<i>1.45</i>	<i>37.19</i>	<i>76.75</i>	<i>2792.93</i>	<i>35610</i>
					<i>11057</i>		<i>11057</i>
					<i>783585</i>		
					State Revenue	<i>6.42</i>	<i>48954</i>
					State School	<i>1.23</i>	<i>9379</i>
					Teacher's Insurance and Retirement Fund	<i>.05</i>	<i>381</i>
					Minn. Gen'l. Hosp.	<i>.03</i>	<i>229</i>
					County Revenue	<i>5.</i>	<i>38127</i>
					County Road and Bridge	<i>8.</i>	<i>61002</i>
					County	<i>7.09</i>	<i>54063</i>
					County Bond and Interest		
					County Sinking	<i>9.11</i>	<i>69466</i>
					County Building		
					Rd. Maint.	<i>2.</i>	<i>15251</i>
					Town Revenue	<i>3.78</i>	<i>25011</i>
					Town Road and Bridge	<i>14.81</i>	<i>112931</i>
					Town 1 Mill Draggings	<i>1.</i>	<i>7625</i>
					Town State Loan	<i>3.09</i>	<i>23562</i>
					Town Building	<i>2.62</i>	<i>19978</i>
					Town Fire Patrol	<i>4.93</i>	<i>37593</i>
					Phone	<i>4.93</i>	<i>37593</i>
					School Local 1 Mill	<i>1.</i>	<i>7625</i>
					School Special	<i>30.07</i>	<i>2292.93</i>
					School Int.	<i>4.67</i>	<i>35610</i>
					School Sg.	<i>1.45</i>	<i>11057</i>
					School		
					Money and Credits		
							<i>844730</i>

Total No. Acres *16,200.53* Total Levy, \$ *8,444.73* Book Footings, \$ *8,447.27*

I, A. A. CATER, Auditor of said County and State of Minnesota, do hereby certify that the foregoing is a true and correct schedule, signing the valuation of all the taxable property in the *Wabedo* in said County, year A. D. 1925.

Witness my hand and official seal this *31st* day of *December* A. D. 1925.

A. A. Cater County Auditor.



Book Footings 30 short

Tax List of Real Property in the Town of Wabedo

Cass County, Minnesota, for Taxes for the Year 1925.

IN WHOSE NAME ASSESSED	TO WHOM TRANSFERRED	Sold for Taxes	SUB-DIVISION	Sec. or Lot	Town or Block	No. of Acres		VALUATION	No. School Dist.	GENERAL TAXES	School District	School District	School District	Highway Ditch	Ditch No.	Ditch No.	Ditch No.	TOTAL TAXES	PAID	WHEN PAID	Number of Receipt	March Settlement	June Settlement	Penalty	November Settlement	Penalty	Collections to First Monday in January	Penalty	Delinquent on First Monday in January	REMARKS						
						No. Rate	No. Rate				No. Rate	\$	cts.																		\$	cts.	\$	cts.	\$	cts.
John O. Sogge			NE 1/4 of NE 1/4 Lot 1	1	140 28	33 46	156											1.728																		
"			NW 1/4 of NE 1/4 " 2			38 95	192											2.127																		
"			SW 1/4 of NE 1/4			40	190											2.105																		
"			SE 1/4 of NE 1/4			40	190											2.105																		
C. H. Smith			NE 1/4 of NW 1/4 " 3			38 25	110											1.219																		
"			NW 1/4 of NW 1/4 " 4			37 55	143											1.584																		
John O. Sogge			SW 1/4 of NW 1/4 " 5			57 10	234											2.592																		
"			SE 1/4 of NW 1/4 " 6			38 50	110											1.219																		
John C. Ford			NE 1/4 of SW 1/4 " 9			20 16	83											9.19																		
"			NW 1/4 of SW 1/4																																	
"			SW 1/4 of SW 1/4																																	
"			SE 1/4 of SW 1/4																																	
John O. Sogge			NE 1/4 of SE 1/4 " 10			30 16	143											1.584																		
Silas E. Showalter			NW 1/4 of SE 1/4 " 7			36 25	332											3.678																		
"			SW 1/4 of SE 1/4																																	
"			SE 1/4 of SE 1/4																																	
						41083	1883												20860																	

Paid 7/5/27 by Del Rec #21909

Paid in Full APR 19 1926 3116 ✓

1st Half Paid OCT 11 1926 7389 ✓

1st Half Paid MAY 25 1926 4615 ✓

Paid in Full OCT 4 1926 9163

4635 4138

Tax List of Real Property in the Town of Wabedo

Cass County, Minnesota, for Taxes for the Year 1925.

IN WHOSE NAME ASSESSED	TO WHOM TRANSFERRED	Sold for Taxes	SUB-DIVISION	Sec. or Lot	Town or Block	No. of Acres		VALUATION	No. School Dist.	GENERAL TAXES	School District	School District	School District	Highway Ditch	Ditch No.	Ditch No.	Ditch No.	TOTAL TAXES	PAID	WHEN PAID	Number of Receipt	March Settlement	June Settlement	Penalty	November Settlement	Penalty	Collections to First Monday in January	Penalty	Delinquent on First Monday in January	REMARKS					
						No. Rate	No. Rate				No. Rate	\$	cts.																		\$	cts.	\$	cts.	\$
Harry Mathews			NE 1/4 of NE 1/4 Lot 1	3	140.28	37.97	202											2238	1	OCT 14 1926	4466														
Weyerhauser et al			NW 1/4 of NE 1/4 " 2			38.37	130											1440	2	OCT 10 1926	5765		1119		1119										
M. P. Ry. Co.			SW 1/4 of NE 1/4			40	145											1606	3	OCT 10 1926	10886		1523		1523										
Weyerhauser et al	Harry Phillipina Mathews		SE 1/4 of NE 1/4			40	223											2470	4	OCT 14 1926	9466		1235		1235										
Weyerhauser et al			NE 1/4 of NW 1/4 " 3			38.78	143											1584	5	OCT 8 1926	9334														
"			NW 1/4 of NW 1/4 " 4			39.18	143											1584	6	MAY 21 1926	4234		1584		1584										
"			SW 1/4 of NW 1/4			40	154											1706	7	MAY 31 1926	9334														
"			SE 1/4 of NW 1/4			40	154											1706	8	MAY 29 1926	4234		1706		1706										
"			NE 1/4 of SW 1/4			40	143											1584	9	MAY 21 1926	9334														
"			NW 1/4 of SW 1/4			40	143											1584	10	JUL 8 1926	9334														
"			SW 1/4 of SW 1/4			40	143											1584	11	MAY 21 1926	4234		3168		3168										
"			SE 1/4 of SW 1/4			40	143											1584	12	MAY 21 1926	4234														
"			NE 1/4 of SE 1/4			40	143											1584	13	OCT 8 1926	9334														
"			NW 1/4 of SE 1/4			40	166											1839	14	JUL 8 1926	4234		792		792										
J. B. Fuller	Christian Olsen		SW 1/4 of SE 1/4			40	221											1839	15	APR 26 1926	3239		1839												
Weyerhauser et al			SE 1/4 of SE 1/4			40	166											2448	16	MAY 21 1926	7234		926												
						40	166											1839	17	JUL 26 1926	8623														
						40	166											1839	18	MAY 21 1926	4234		919		920										
						40	166											1839	19	MAY 21 1926	4234														
						40	166											1839	20	MAY 21 1926	4234														
						63420	2562											28380					14805		14495										

Warrant # 94953

Tax List of Real Property in the Town of Wabedo

Cass County, Minnesota, for Taxes for the Year 1925.

IN WHOSE NAME ASSESSED	TO WHOM TRANSFERRED	Sold for Taxes	SUB-DIVISION	Sec. or Lot	Town or Block	No. of Acres		VALUATION	No. School Dist.	GENERAL TAXES	School District	School District	School District	Highway Ditch	Ditch No.	Ditch No.	Ditch No.	TOTAL TAXES	PAID	WHEN PAID	Number of Receipt	March Settlement	June Settlement	Penalty	November Settlement	Penalty	Collections in First Monday in January	Penalty	Delinquent on First Monday in January	REMARKS						
						No. Rate	No. Rate				No. Rate	\$	cts.																		\$	cts.	\$	cts.	\$	cts.
Josephine Connell			NE 1/4 of NE 1/4	8	140.28	40	143											1584	1																	
"			NW 1/4 of NE 1/4			40	143											1584	2																	
A. Montgomery			SW 1/4 of NE 1/4			40	143											1584	3																	
"			SE 1/4 of NE 1/4			40	143											1584	4																	
Herschel V. Jones			NE 1/4 of NW 1/4			40	143																													
"			NW 1/4 of NW 1/4 Lot 1			21.25	953											1584	16																	
H. D. Sickles			SW 1/4 of NW 1/4 " 2			41.75	485											10557	17																	
			SE 1/4 of NW 1/4															5373	8																	
			NE 1/4 of SW 1/4																																	
			NW 1/4 of SW 1/4																																	
			SW 1/4 of SW 1/4																																	
			SE 1/4 of SW 1/4																																	
E. H. Johnson			NE 1/4 of SE 1/4			40	143																													
H. J. Johnson			NW 1/4 of SE 1/4 " 3			38.80	231											1584	16																	
E. H. Johnson			SW 1/4 of SE 1/4 " 4			58.25	215											2559	17																	
"			SE 1/4 of SE 1/4															3046	18																	
						405.05	2802																													
																			31039																	

PAID in FULL MAR 1 5 1926
 PAID in FULL MAR 1 5 1926
 PAID in FULL JAN 27 1926

PAID in FULL MAY 15 1926
 1st Half Paid MAY 2 4 1926
 PAID in FULL MAY 15 1926

12141
 5373

1277
 3046

5373 18051 1279

Tax List of Real Property in the Town of Wabedo

Cass County, Minnesota, for Taxes for the Year 1925.

IN WHOSE NAME ASSESSED	TO WHOM TRANSFERRED	Sold for Taxes	SUB-DIVISION	Sec. or Lot	Town or Block	No. of Acres		VALUATION	No. School Dist.	GENERAL TAXES	School District	School District	School District	Highway Ditch	Ditch No.	Ditch No.	Ditch No.	TOTAL TAXES	PAID	WHEN PAID	Number of Receipt	March Settlement	June Settlement	Penalty	November Settlement	Penalty	Collections to First Monday in January	Penalty	Delinquent on First Monday in January	REMARKS	
						No. Rate	No. Rate				No. Rate	\$	cts.																		\$
Weiserhauser et al			NE 1/4 of NE 1/4	7	14028	40	143											1584	1st Half Paid	MAY 28	1926	733.4									
"			NW 1/4 of NE 1/4			40	143											1584	2nd Half Paid	MAY 28	1926	423.4	✓	31.68		31.68					
"			SW 1/4 of NE 1/4			40	143											1584	1st Half Paid	MAY 28	1926										
"			SE 1/4 of NE 1/4			40	143											1584	1st Half Paid	MAY 28	1926										
L.J. Hernen & N.E. Lewis			NE 1/4 of NW 1/4			40	143											1584	1st Half Paid	MAY 31	1926	716.8	✓	7.92		7.92					
Cass Realty Co.			NW 1/4 of NW 1/4			40	143											1584	2nd Half Paid	MAY 31	1926	746.0	✓								
Conservation Co.			SW 1/4 of NW 1/4			40	143											1584	1st Half Paid	MAY 31	1926										
Weiserhauser et al			SE 1/4 of NW 1/4			40	143											1584	2nd Half Paid	MAY 31	1926										
"			NE 1/4 of SW 1/4			40	143											1584	1st Half Paid	MAY 31	1926										
"			NW 1/4 of SW 1/4			40	143											1584	2nd Half Paid	MAY 31	1926										
"			SW 1/4 of SW 1/4			40	143											1584	1st Half Paid	MAY 31	1926										
"			SE 1/4 of SW 1/4			40	143											1584	2nd Half Paid	MAY 31	1926	933.5									
"			NE 1/4 of SE 1/4			40	143											1584	1st Half Paid	MAY 31	1926	423.5	✓	71.28		71.28					
"			NW 1/4 of SE 1/4			40	143											1584	2nd Half Paid	MAY 31	1926										
"			SW 1/4 of SE 1/4			40	143											1584	1st Half Paid	MAY 31	1926										
"			SE 1/4 of SE 1/4			40	143											1584	2nd Half Paid	MAY 31	1926										
						640	2288											25344													
																						14256				11088					

Tax List of Real Property in the Town of Wabedo

IN WHOSE NAME ASSESSED	TO WHOM TRANSFERRED	Sold for Taxes	SUB-DIVISION	Sec. of Lot	Town or Block	Huc.	No. of Acres		VALUATION	No. School Dist.	GENERAL TAXES			School District			
							Acres	100's			\$	cts.	\$	cts.	No. Rate	No. Rate	No. Rate
Hugh V. Mercer			NE 1/4 of NE 1/4	10	110	28	40		166								
"			NW 1/4 of NE 1/4				40		166								
"			SW 1/4 of NE 1/4				40		166								
"			SE 1/4 of NE 1/4				40		166								
"			NE 1/4 of NW 1/4				40		166								
"			NW 1/4 of NW 1/4				40		166								
"			SW 1/4 of NW 1/4				40		166								
"			SE 1/4 of NW 1/4				40		166								
"			NE 1/4 of SW 1/4				40		166								
"			NW 1/4 of SW 1/4				40		166								
"			SW 1/4 of SW 1/4				40		166								
Grace E. Polk			SE 1/4 of SW 1/4				40		166								
Hugh V. Mercer			E. 720 ft. of Lot 1				20		119								
"			NE 1/4 of SE 1/4 100 ft. of Lot 1				14	40	362								
"			NW 1/4 of SE 1/4 Lot 2				5	30	412								
"			SW 1/4 of SE 1/4														
"			SE 1/4 of SE 1/4														
							55	70	2885								

Cass County, Minnesota, for Taxes for the Year 1925.

Highway Ditch No.	Ditch No.	Ditch No.	Ditch No.	TOTAL TAXES	PAID	WHEN PAID	Number of Receipt	March Settlement	June Settlement	Penalty	November Settlement	Penalty	Collections to First Monday in January	Penalty	Delinquent on First Monday in January	REMARKS
				1839												
				1839												
				1839												
				1839												
				1839												
				1839												
				1839												
				1839												
				1839												
				1839												
				1839												
				1318												
				4010												
				4564												
				31960												

PAID in Full FEB 27 1926 2637 ✓ 1318

1318

Tax List of Real Property in the Town of Wabedo

Cass County, Minnesota, for Taxes for the Year 1925.

IN WHOSE NAME ASSESSED	TO WHOM TRANSFERRED	Sold for Taxes	SUB-DIVISION	Sec. or Lot	Town or Block	No. of Acres		VALUATION	No. School Dist.	GENERAL TAXES	School District			Highway Ditch	Ditch No.	Ditch No.	Ditch No.	TOTAL TAXES	PAID	WHEN PAID	Number of Receipt	March Settlement	June Settlement	Penalty	November Settlement	Penalty	Collections to First Monday in January	Penalty	Delinquent on First Monday in January	REMARKS	
						Acres	100's				No. Rate	No. Rate	No. Rate																		\$
Raymond W. Stober			NE 1/4 of NE 1/4			15	140	28																							
			NW 1/4 of NE 1/4																												
			SW 1/4 of NE 1/4 Lot 2			25	75																								
			SE 1/4 of NE 1/4																												
L. J. Hemer & N. E. Lewis			NE 1/4 of NW 1/4			53	75																								
"	"		NW 1/4 of NW 1/4			40																									
"	"		SW 1/4 of NW 1/4			40																									
"	"		SE 1/4 of NW 1/4			40																									
"	"		NE 1/4 of SW 1/4			40																									
"	"		NW 1/4 of SW 1/4			40																									
"	"		SW 1/4 of SW 1/4			40																									
"	"		SE 1/4 of SW 1/4			28	95																								
"	"		NE 1/4 of SE 1/4			24																									
"	"		NW 1/4 of SE 1/4																												
			SW 1/4 of SE 1/4																												
			SE 1/4 of SE 1/4																												
						37	45																								
								14																							

1374.3

1580 1374 2.06

2625 6

1584 7

1584 8

1584 9

1584 10

1584 11

1584 12

1584 13

1529 14

1252 16

17

18

19

20

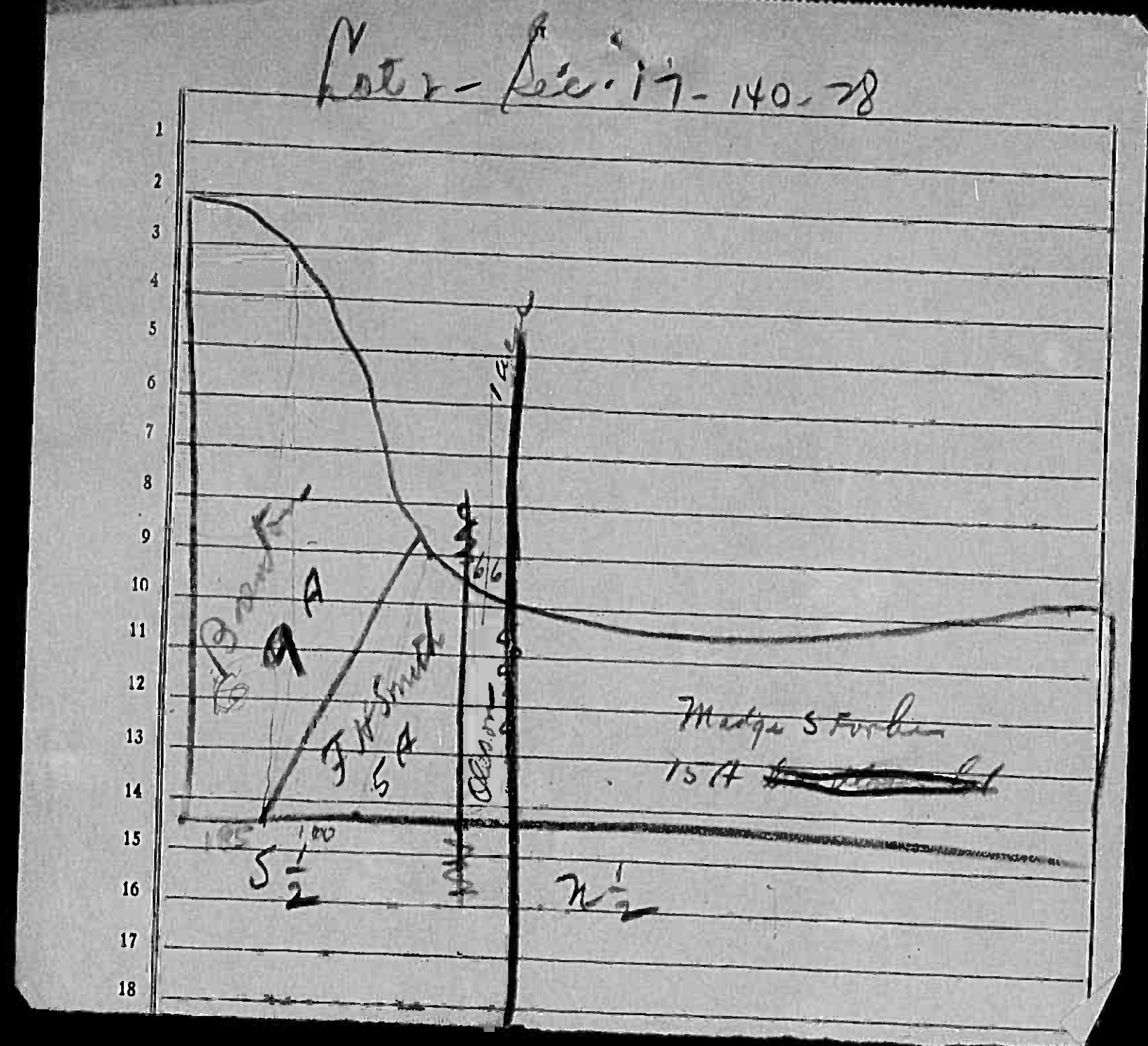
16284

7455

7455

OCT 30 1926
1st. Half Paid MAY 31 1926 7168
OCT 30 1926
1st. Half Paid MAY 31 1926 7168
OCT 30 1926
1st. Half Paid MAY 31 1926 7168
OCT 30 1926
1st. Half Paid MAY 31 1926 7168
OCT 30 1926
1st. Half Paid MAY 31 1926 7168
OCT 30 1926
1st. Half Paid MAY 31 1926 7168
OCT 30 1926
1st. Half Paid MAY 31 1926 7168
OCT 30 1926
1st. Half Paid MAY 31 1926 7168
OCT 30 1926
1st. Half Paid MAY 31 1926 7168
OCT 30 1926
1st. Half Paid MAY 31 1926 7168
OCT 30 1926
1st. Half Paid MAY 31 1926 7168
OCT 30 1926
1st. Half Paid MAY 31 1926 7168

7455 7455



Tax List of Real Property in the Town of Wabedo

Cass County, Minnesota, for Taxes for the Year 1925.

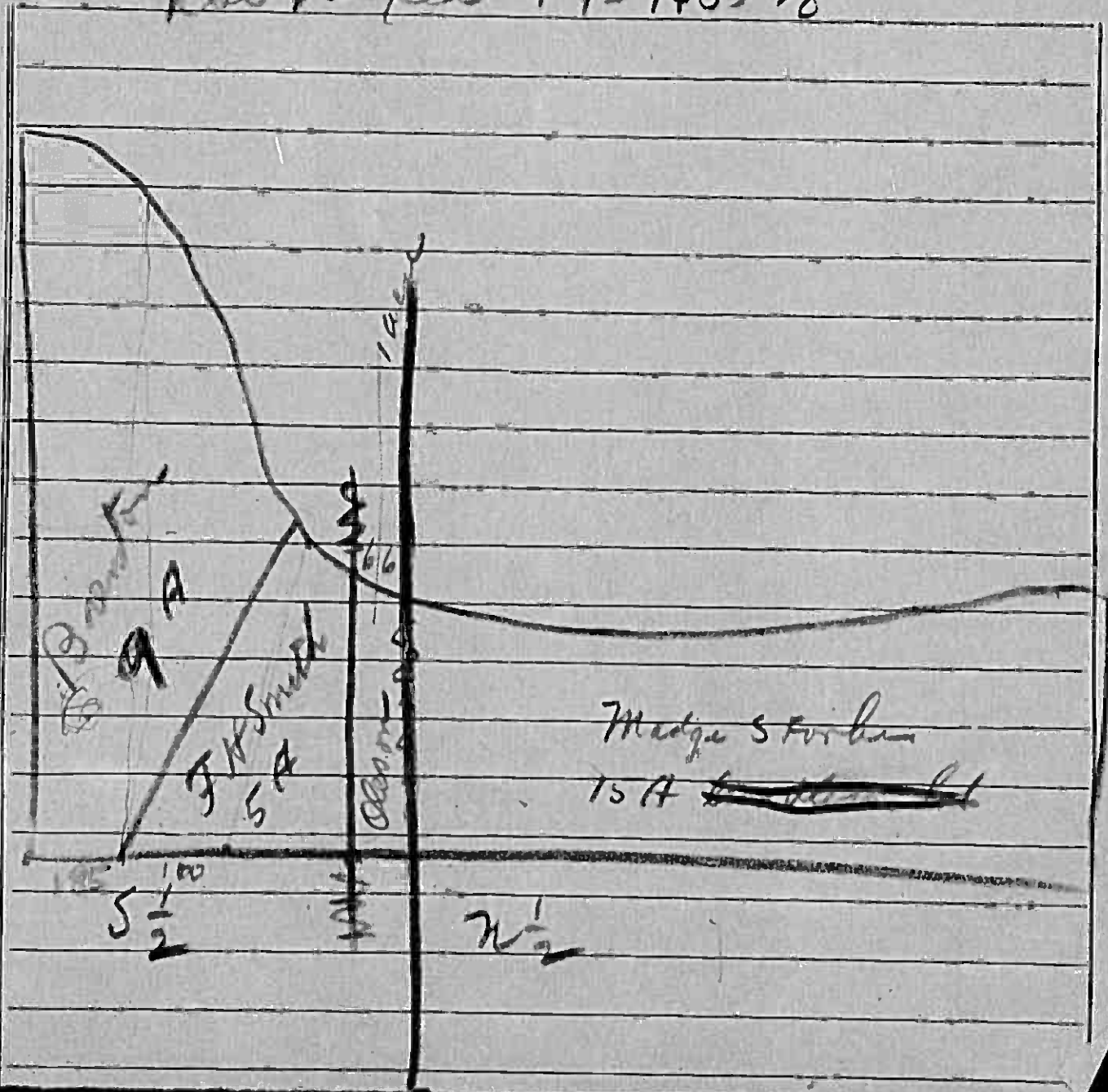
IN WHOSE NAME ASSESSED	TO WHOM TRANSFERRED	Subl for Taxes	SUB-DIVISION	Sec. or Lot	Town or Block	No. of Acres		VALUATION	No. School Dist.	GENERAL TAXES			Highway Ditch No.	Ditch No.	Ditch No.	Ditch No.	TOTAL TAXES	PAID	WITHN PAID	Number of Receipt	March Settlement	June Settlement	Penalty	November Settlement	Penalty	Collections in First Month in January	Penalty	Delinquent on First Monday in January	REMARKS
						Reg.	Acres 100's			\$	cts.	\$																	
Weyerhausers et al			NE 1/4 of NE 1/4			17	140 28 40	143																					
Lola J. Clement	Harry J. Phorson		NW 1/4 of NE 1/4 Lot 1				27 50	166																					
Matie S. Forbes	Wideman		SW 1/4 of NE 1/4 " 2				15 50	241																					
Raymond F. Kinkel			SE 1/4 of NE 1/4				40	166																					
Marquerite Oleson	W. H. Brenton		NE 1/4 of NW 1/4				1	36																					
W. H. Brenton			NW 1/4 of NW 1/4				1	57																					
Carl C. Propper			SE 1/4 of NW 1/4																										
Carl C. Propper			NE 1/4 of SW 1/4																										
Carl C. Propper			NW 1/4 of SW 1/4																										
Carl C. Propper			SW 1/4 of SW 1/4																										
Carl C. Propper			SE 1/4 of SW 1/4																										
Carl C. Propper	Raymond F. Kinkel		SE 1/2 of Lot 4				16	559																					
Carl C. Propper			NE 1/4 of SE 1/4				40	180																					
Henry V. McDonald			NW 1/4 of SE 1/4 Lot 3				49 50	297																					
Lola J. Clement			SW 1/4 of SE 1/4				4 00	30																					
Lola J. Clement	John Ekdahl		SE 1/4 of SE 1/4 Lots				12 75	71																					
H. H. Polk			SE 1/4 of 1 1/2 Lot 4				12 00	89																					
							271 75	2120																					

No.	GENERAL TAXES	Highway Ditch No.	Ditch No.	Ditch No.	Ditch No.	TOTAL TAXES	PAID	WITHN PAID	Number of Receipt	March Settlement	June Settlement	Penalty	November Settlement	Penalty	Collections in First Month in January	Penalty	Delinquent on First Monday in January	REMARKS
1584						1584												
1839						1839												
3068						3068												
1839						1839												
399						399												
208						208												
527						527												
6193						6193												
1994						1994												
3290						3290												
332						332												
787						787												
986						986												
23487						23487												

\$100 increase val. for bldg. added by Auditor 7/1/25. See 1925 Assessment Roll.

Plot - Sec. 17 - 140 - 78

1
2
3
4
5
6
7
8
9
10
11
12
13
14
15
16
17
18



Tax List of Real Property in the Town of Wabedo

Cass County, Minnesota, for Taxes for the Year 1925.

IN WHOSE NAME ASSESSED	TO WHOM TRANSFERRED	Sgd for Taxes	SUB-DIVISION	Sec. or Lot	Town or Block	Hing.	No of Acres		VALUATION	No. School Dist.	GENERAL TAXES	School District	School District	School District	Highway Ditch No.	Ditch No.	Ditch No.	Ditch No.	TOTAL TAXES	PAID	WHEN PAID	Number of Receipt	March Settlement	June Settlement	Penalty	November Settlement	Penalty	Collections to First Monday in January	Penalty	Delinquent on First Monday in January	REMARKS								
							No. Date	No. Date				No. Date																											
							Mills	Mills				Mills																											
1			NE 1/4 of NE 1/4				18	140	28																														
2			NW 1/4 of NE 1/4																																				
3			SW 1/4 of NE 1/4																																				
4			SE 1/4 of NE 1/4																																				
5																																							
6			NE 1/4 of NW 1/4																																				
7			NW 1/4 of NW 1/4																																				
8			SW 1/4 of NW 1/4																																				
9			SE 1/4 of NW 1/4																																				
10																																							
11			NE 1/4 of SW 1/4																																				
12			NW 1/4 of SW 1/4																																				
13	<i>A. Anson Clothier</i>		SW 1/4 of SW 1/4 Lot 3					12																															
14			SE 1/4 of SW 1/4 " 2					17	25																														
15																																							
16			NE 1/4 of SE 1/4																																				
17			NW 1/4 of SE 1/4																																				
18			SW 1/4 of SE 1/4 " 1					27																															
19			SE 1/4 of SE 1/4 " 1					27																															
20								56	25																														

787 Paid in Full APR 29 1926

3534 Paid in Full APR 29 1926

1784 Paid in Full APR 29 1926

6105

3370 ✓ 6105

6105

Tax List of Real Property in the Town of Wabedo

Cass County, Minnesota, for Taxes for the Year 1925.

IN WHOSE NAME ASSESSED		TO WHOM TRANSFERRED	Sold for Taxes	SUBDIVISION		Sec. or Lot	Town or Block	Rtg.	No. of Acres		VALUATION	No. School Dist.				GENERAL TAXES				Highway Ditch				TOTAL TAXES		PAID	WHEN PAID			Number of Receipt	March Settlement	June Settlement	Penalty	November Settlement	Penalty	Collections to First Monday in January	Penalty	Delinquent on First Monday in January	REMARKS												
									Acres	100's	Dollars	No.	Rate	No.	Rate	No.	Rate	No.	Rate	No.	Rate	Dollars	cts.		Month	Day	Year	\$	cts.	\$	cts.	\$	cts.	\$	cts.	\$	cts.	\$	cts.	\$	cts.	\$	cts.								
Weyerhouser et al Cass Realty Co.				NE 1/4 of NE 1/4 Lot 2	19 140 28 33 25				25		175											2160	1		MAY 31	1926																									
"				NW 1/4 of NE 1/4					40		143											1584	2		OCT 15	1926																									
Peter Lillstrom & F.J. Miller				SW 1/4 of NE 1/4					40		143											1584	3		OCT 15	1926																									
"				SE 1/4 of NE 1/4 " 1					34 50		208											2304	4		MAY 31	1926																									
A. Anson Clothier				NE 1/4 of NW 1/4					40		143											1584	5																												
"				NW 1/4 of NW 1/4 " 3					32 12		119											1318	6		APR 29	1926																									
"				SW 1/4 of NW 1/4 " 4					32 04		119											1318	7		APR 29	1926																									
J. Iva Moats				SE 1/4 of NW 1/4					40		143											1584	8		APR 29	1926																									
"				NE 1/4 of SW 1/4					40		143											1584	9		MAY 24	1926																									
A. Anson Clothier				NW 1/4 of SW 1/4 " 5					31 96		119											1584	10		MAY 24	1926																									
Erick Wickstrom				SW 1/4 of SW 1/4 " 6					31 88		119											1318	11		APR 29	1926																									
Agatha A. Specht				SE 1/4 of SW 1/4					40		143											1318	12		MAY 29	1926																									
Lyman Richardson		W.A. Clark		NE 1/4 of SE 1/4					40		143											1584	13		MAY 29	1926																									
"		"		NW 1/4 of SE 1/4					40		143											1584	14		MAY 10	1926																									
A. Dolph Nelson				SW 1/4 of SE 1/4 " 7					36		242											2681	15		MAY 29	1926																									
Lyman Richardson		W.A. Clark		SE 1/4 of SE 1/4 " 8					32 50		227											2515	16		MAY 29	1926																									
									584 25	2492																					27604				25236	2368															

Tax List of Real Property in the Town of Wabedo

IN WHOSE NAME ASSESSED	TO WHOM TRANSFERRED	Sold for Taxes	SUB-DIVISION	Sec. or Lot	Town or Block	Rng.	No. of Acres		VALUATION	No. School Dist.	GENERAL TAXES	School District						
							Acres	100's				No. Rate	No. Rate	No. Rate				
										\$	cts.	\$	cts.	\$	cts.	\$	cts.	
Josephine Connell			NE 1/4 of NE 1/4 Lot 1	20	140	28	37	75										
Max E. Oche			NW 1/4 of NE 1/4 " 2				28	75										
Josephine Connell			SW 1/4 of NE 1/4				40											
			SE 1/4 of NE 1/4				40											
Max E. Oche			NE 1/4 of NW 1/4 " 3				16											
Josephine Connell	M. J. Goran		NW 1/4 of NW 1/4															
Josephine Connell	Gertrude C. Mademan		SW 1/4 of NW 1/4 " 5				16	40										
	V. Co. Vassan		SE 1/4 of NW 1/4 " 4				36	25										
Josephine Connell			NE 1/4 of SW 1/4				40											
"			NW 1/4 of SW 1/4				40											
Pope Co. St. Bk, Glenwood			SW 1/4 of SW 1/4 " 6				37	50										
"			SE 1/4 of SW 1/4 " 7				38											
Josephine Connell			NE 1/4 of SE 1/4				40											
"			NW 1/4 of SE 1/4				40											
"			SW 1/4 of SE 1/4 " 8				35	50										
"			SE 1/4 of SE 1/4				40											
							526	35										
									217									

Cass County, Minnesota, for Taxes for the Year 1925.

Highway Ditch No.	Ditch No.	Ditch No.	Ditch No.	TOTAL TAXES	PAID	WHEN PAID	Number of Receipt	March Settlement	June Settlement	Penalty	November Settlement	Penalty	Collections to First Monday in January	Penalty	Delinquent on First Monday in January	REMARKS	
																	\$
				1584	1												
				1185	2	Paid in Full FEB 25 1926	1570									2769	
				1584	3	Paid in Full FEB 25 1926											
				1584	4												
					5												
				1052	6	Paid in Full FEB 25 1926	1070									1052	
					7												
				4097	8	Paid in Full APR 2 1926	2886			1097							
				2360	9	Paid in Full OCT 30 1926	1117										
					10												
				1584	11												
				1584	12												
				1939	13												
				1950	14												
					15												
				1584	16												
				1584	17												
				1861	18												
				1584	19												
					20												
				24116													
								3821	1097								
											2360						
											2230	1939	2.91				
											2243	1950	2.93				

Tax List of Real Property in the Town of Wabedo

Cass County, Minnesota, for Taxes for the Year 1925.

IN WHOSE NAME ASSESSED	TO WHOM TRANSFERRED	Sold for Taxes	SUB-DIVISION	Sec. of Lot	Town or Block	No. of Acres		VALUATION	No. School Dist.	GENERAL TAXES	School District	School District	School District	Highway Ditch No.	Ditch No.	Ditch No.	Ditch No.	TOTAL TAXES	PAID	WHEN PAID	Number of Receipt	March Settlement	June Settlement	Penalty	November Settlement	Penalty	Collections to First Monday in January	Penalty	Delinquent on First Monday in January	REMARKS				
						No. Rate	No. Rate				No. Rate	Acres	100's																		\$	cts.	\$	cts.
A. E. Hubbard			NE 1/4 of NE 1/4	21	140	28	40	143																										
"			NW 1/4 of NE 1/4				40	143																										
Weiperhauer et al			SW 1/4 of NE 1/4 Lot 2				28	25	122																									
"			SE 1/4 of NE 1/4 " 1				39	70	180																									
A. H. Brooks			NE 1/4 of NW 1/4				40	143																										
"			NW 1/4 of NW 1/4				40	143																										
"			SW 1/4 of NW 1/4 " 4				39	80	174																									
"			SE 1/4 of NW 1/4 " 3				33	144																										
Emil Krueger			NE 1/4 of SW 1/4																															
"			NW 1/4 of SW 1/4 " 5				27		118																									
"			SW 1/4 of SW 1/4 " 6				35	10	153																									
Elizabeth J. Grosnell			SE 1/4 of SW 1/4																															
Weiperhauer et al			" 9				2	41	29																									
"			NE 1/4 of SE 1/4 " 8				52	30	226																									
J. P. Hansen & L. C. Fischer			NW 1/4 of SE 1/4																															
Weiperhauer et al			SW 1/4 of SE 1/4 " 7				41	75	181																									
"			SE 1/4 of SE 1/4				40		143																									
						48931		1992																										
																		22067																
																						221	13377	8369										

Tax List of Real Property in the Town of Wabedo

Cass County, Minnesota, for Taxes for the Year 1925.

IN WHOSE NAME ASSESSED	TO WHOM TRANSFERRED	Sold for Taxes	SUB-DIVISION	Sec. or Lot	Town or Block	No. of Acres			VALUATION	No. School Dist.	GENERAL TAXES			Highway Ditch No.	Ditch No.	Ditch No.	Ditch No.	TOTAL TAXES	PAID	WHEN PAID	Number of Receipt	March Settlement	June Settlement	Penalty	November Settlement	Penalty	Collection to First Monday in January	Penalty	Delinquent on First Monday in January	REMARKS		
						11ng.	Acres	100's			\$	cts.	\$																		cts.	\$
			NE 1/4 of NE 1/4					22	140	28																						
			NW 1/4 of NE 1/4																													
			SW 1/4 of NE 1/4																													
			SE 1/4 of NE 1/4																													
Clifford J. Wooley			NE 1/4 of NW 1/4 Lot 1					32																								
E. C. Whitney			NW 1/4 of NW 1/4					40																								
St. A. Lbr. Co.			SW 1/4 of NW 1/4					40																								
Clifford J. Wooley			SE 1/4 of NW 1/4 " 2					33																								
Josephine Connell	Clifford J. Wooley		NE 1/4 of SW 1/4 " 3					37																								
Josephine Connell			NW 1/4 of SW 1/4					40																								
M. F. Champlin			SW 1/4 of SW 1/4					40																								
Frank Hardy			SE 1/4 of SW 1/4 Part of Lot 4					31	65																							
			NE 1/4 of SE 1/4																													
			NW 1/4 of SE 1/4																													
Miss M. Blomquist	Elizabeth B. Hansen (born McHansen)		SW 1/4 of SE 1/4 Lot 5					50																								
B. M. Wisneman			SE 1/4 of SE 1/4 " 6					27	50																							
								373	15																							

35238 1839 14107 15708

Tax List of Real Property in the Town of Wabedo

IN WHOSE NAME ASSESSED	TO WHOM TRANSFERRED	Sold for Taxes	SUB-DIVISION	Sec. or Lot	Town or Block	No. of Acres		VALUATION	No. School Dist.	GENERAL TAXES	School District	School District	School District
						Rate	Rate				Rate		
Josephine Connell	Joseph J. Hansen	Do. no collector	NE 1/4 of NE 1/4 of Lot 1	32	140	28	58						
Josephine Connell	Andrew Gassinger		NW 1/4 of NE 1/4			40		268					
"			SW 1/4 of NE 1/4 " 2			22	70	154					
"			SE 1/4 of NE 1/4					109					
"													
J. B. Walker			NE 1/4 of NW 1/4			40		154					
St. Anthony Lbr. Co.			NW 1/4 of NW 1/4			40		154					
Josephine Connell			SW 1/4 of NW 1/4			40		154					
"			SE 1/4 of NW 1/4 " 3			38	25	173					
"													
"			NE 1/4 of SW 1/4 " 4			23	50	104					
"			NW 1/4 of SW 1/4			40		154					
"			SW 1/4 of SW 1/4			40		154					
"			SE 1/4 of SW 1/4			40		154					
A. Montgomery	Geo. W. Ruscoe		NE 1/4 of SE 1/4 " 6			53	50	250					
"			NW 1/4 of SE 1/4										
"			SW 1/4 of SE 1/4 " 5			36		107					
"			SE 1/4 of SE 1/4										
						51195		2089					

Cass County, Minnesota, for Taxes for the Year 1925.

Highway Ditch No.	Ditch No.	Ditch No.	Ditch No.	TOTAL TAXES	PAID	WHEN PAID	Number of Receipt	March Settlement	June Settlement	Penalty	November Settlement	Penalty	Collections to First Monday in January	Penalty	Delinquent on First Monday in January	REMARKS
				2969	1	Paid in Full	AUG 18	1926	8804							
				1706	2	✓							2969	119		
				1208	3	Paid in Full	AUG 7	1926	8751				1208	42		
					4											
					5											
				1706	6	✓										
				1706	7	1st Half Paid	MAY 31	1926								
				1706	8	2nd Half Paid	OCT 31	1926	1157	✓	1706	1706				
				1916	9	✓										
					10											
				1152	11											
				1706	12	✓										
				1206	13	✓										
				1706	14											
					15											
				2770	16	1st Half Paid	MAY 31	1926	1058	✓						
					17	2nd Half Paid	OCT 28	1926	520	✓	1978	1977				
				1185	18	1st Half Paid	MAY	1926								
					19											
					20											
				23142												
									3684		9860					

Tax List of Real Property in the Town of Wabedo

Cass County, Minnesota, for Taxes for the Year 1925.

IN WHOSE NAME ASSESSED

TO WHOM TRANSFERRED

Sold for Taxes

SUB-DIVISION

Sec. or Lot

Town or Block

Rng.

No. of Acres

Acres

100's

VALUATION

Dollars

No. School Dist.

GENERAL TAXES

\$ cts.

School District No. Rate

\$ cts.

School District No. Rate

\$ cts.

School District No. Rate

\$ cts.

Highway Ditch No.

Ditch No.

Ditch No.

Ditch No.

TOTAL TAXES

Dollars cts.

PAID

WHEN PAID

Month Day Year

Number of Receipt

March Settlement

June Settlement

Penalty

November Settlement

Penalty

Collections to First Monday in January

Penalty

Delinquent on First Monday in January

Penalty

Delinquent on First Monday in January

REMARKS

- 1
- 2
- 3
- 4
- 5
- 6
- 7
- 8
- 9
- 10
- 11
- 12
- 13
- 14
- 15
- 16
- 17
- 18
- 19
- 20

NE 1/4 of NE 1/4
 NW 1/4 of NE 1/4
 SW 1/4 of NE 1/4
 SE 1/4 of NE 1/4
 NE 1/4 of NW 1/4
 NW 1/4 of NW 1/4
 SW 1/4 of NW 1/4
 SE 1/4 of NW 1/4
 NE 1/4 of SW 1/4
 NW 1/4 of SW 1/4
 SW 1/4 of SW 1/4
 SE 1/4 of SW 1/4
 NE 1/4 of SE 1/4
 NW 1/4 of SE 1/4
 SW 1/4 of SE 1/4
 SE 1/4 of SE 1/4

- 1
- 2
- 3
- 4
- 5
- 6
- 7
- 8
- 9
- 10
- 11
- 12
- 13
- 14
- 15
- 16
- 17
- 18
- 19
- 20

PERSONAL

Tax List of Real Property in the Town of Wabedo

Cass County, Minnesota, for Taxes for the Year 1925.

IN WHOSE NAME ASSESSED	TO WHOM TRANSFERRED	Sold for Taxes	SUB-DIVISION	Sec. or Lot	Town or Block	No. of Acres		VALUATION	No. School Dist.	GENERAL TAXES			Highway Ditch No.	Ditch No.	Ditch No.	TOTAL TAXES	PAID	WHEN PAID	Number of Receipt	March Settlement	June Settlement	Penalty	November Settlement	Penalty	Collections to First Monday in January	Penalty	Delinquent on First Monday in January	REMARKS
						Acre	100's			No.	Rate	No.																
			NE 1/4 of NE 1/4																									
			NW 1/4 of NE 1/4																									
			SW 1/4 of NE 1/4																									
			SE 1/4 of NE 1/4																									
			NE 1/4 of NW 1/4																									
			NW 1/4 of NW 1/4																									
			SW 1/4 of NW 1/4																									
			SE 1/4 of NW 1/4																									
			NE 1/4 of SW 1/4																									
			NW 1/4 of SW 1/4																									
			SW 1/4 of SW 1/4																									
			SE 1/4 of SW 1/4																									
			NE 1/4 of SE 1/4																									
			NW 1/4 of SE 1/4																									
			SW 1/4 of SE 1/4																									
			SE 1/4 of SE 1/4																									

PERSONAL

Tax List of Real Property in the Town of Wabedo

IN WHOSE NAME ASSESSED

TO WHOM TRANSFERRED

Sold
for
Taxes

SUB-DIVISION

Sec.
or
Lot

Town
or
Block

Ang.

No. of Acres

Acres

100's

VALUATION

No. School Dist.

GENERAL
TAXES

School
District

School
District

School
District

No.
Rate

.....Mills

No.
Rate

.....Mills

No.
Rate

.....Mills

Dollars

\$

cls.

\$

cls.

\$

cls.

\$

cls.

- 1
- 2
- 3
- 4
- 5
- 6
- 7
- 8
- 9
- 10
- 11
- 12
- 13
- 14
- 15
- 16
- 17
- 18
- 19
- 20

- NE 1/4 of NE 1/4
- NW 1/4 of NE 1/4
- SW 1/4 of NE 1/4
- SE 1/4 of NE 1/4
- NE 1/4 of NW 1/4
- NW 1/4 of NW 1/4
- SW 1/4 of NW 1/4
- SE 1/4 of NW 1/4
- NE 1/4 of SW 1/4
- NW 1/4 of SW 1/4
- SW 1/4 of SW 1/4
- SE 1/4 of SW 1/4
- NE 1/4 of SE 1/4
- NW 1/4 of SE 1/4
- SW 1/4 of SE 1/4
- SE 1/4 of SE 1/4

PERSONAL

