

Assessment & Tax List - 1958

Unor. No. 4







**SUMMARY OF TAX COLLECTION**

Original Levy	- - - - -	\$ 8611.24	
Additions	- - - - -	\$ 16.44	
			\$ 8627.68
Abatements	- - - - -	\$	
			\$ 8627.68

**COLLECTIONS**

March Settlement	- - - - -	\$ 893.73	
June Settlement	- - - - -	\$ 3917.89	
November Settlement	- - - - -	\$ 1932.83	
January Settlement	- - - - -	\$ 361.76	\$ 7113.21
			\$
Over Collected	- - - - -	\$	
Under Collected	- - - - -	\$	
Delinquent	- - - - -	\$ 1514.47	\$ 1514.47
Total	- - - - -	\$ 8627.68	

Real Estate

Retired

Chippewa Beach



TABULAR SCHEDULE OF VALUATIONS,

LEVIED IN THE County of Hennepin OF # 4

School District No.	VALUATION BY SCHOOL DISTRICTS				RATE OF STATE TAXES	RATE OF COUNTY TAXES										RATE OF TOWN TAXES										RATE OF
	Agricultural Lands	Non-Agricultural Lands	Personal Property	Total Value of all Property except Money and Credits		Rev.	R. & B.	Welfare	Bonds and Int.	RtB Fed Prog.	PERA	Total Rate of County Tax	Rev.	R. & B.	Drag Tax	State Loan	Total Rate of Town Tax	Local	Special	State Loan	Deficiency	Tuition	Transportation	C.O.	PERA	
115		2480		2480	11.5.90	29.54	15.51.68			5.3.45	109.17					10.										
118	1675	2924 <sup>a</sup>	644	5742													1.25.	91.	1.45	5.	3.	15.				
119		15097 <sup>na</sup>	3937	19034													1.50.	7.97	26.44	1.45	9.77	3.37	19.08			
Un	1675	5489 <sup>na</sup>	981	6470	N.H. 6.52												1.50.	40.51	1.45	23.47			10.53			
		25,990	6061	33,726	12.42												1.20.	63.	1.45	10.	2.1					
																	1.40.	63.	1.45	10.	2.1					
Assessed Value Homestead	Rural 6506	All Other	Personal Property	Total 6506																						
Non-Homestead Total	2159		6061	27220																						
	27665		6061	33726																						

RATES AND TAXES

COUNTY OF CASS, STATE OF MINNESOTA

SCHOOL TAXES	LOCAL 1 MILL AND SPECIAL SCHOOL TAXES BY DISTRICTS										ALL OTHER TAXES		
	Total Rate of Sch'l Tax	Total Rate of all Taxes	Local 1 Mill	Special	State Loan	Def. Jump	C.O.	PERA	B+J	Total School Taxes	FUNDS	Rate	Amounts
141.45	266.52									State - Non-Homestead,		17778	
166.45	291.52									State - Homestead,		19898	
94.08	219.15	248	12400		22568	360	1240	744	3720	41280			
119.08	244.15	332	5798	1848	6131	336	2266	782	4425	21818			
101.95	237.02	342	17115	2728	9050	496	3344	1153	6531	40759			
126.95	252.02	1903	95170		77107	2760	44673		20024	241637			
97.55	222.62	647	25880		40761	938	6470	1359	76055				
117.55	242.62												
		3372	156363	4576	155617	4890	57993	4038	34700	421549			

County: R+B Bldg 6745  
Agrie. Assn. 1686  
368173

Total Taxes Real Estate 7078.48  
 Pers. Prop. 1532.76  
 Total 8611.24

Total Number of Acres 2819.55  
 State of Minnesota, }  
 COUNTY OF CASS }  
 Auditor of said County and State aforesaid, do hereby certify that the foregoing is a true and correct Schedule, showing the valuation of all the taxable property, in the County of Hennepin, in said County, the several rates of Taxation and Totals of the several Tax Funds levied thereon for the year A. D. 1958.  
 Witness my hand and official seal, this 12th day of January, A. D. 1959  
 L. C. Peterson  
 County Auditor  
 By Helen Wilken, Deputy

SEAL

Real Estate



















Assessment Roll and Tax List of Real Property in the Town of Young #4

Cass County, Minnesota, for Taxes for the Year 1958.

Form 50D UNIFORM PROPERTY TAX MAPS

Table with columns: IN WHOSE NAME ASSESSED, TO WHOM TRANSFERRED, DESCRIPTION OF PROPERTY, TRUE AND FULL VALUATIONS, ASSESSED VALUATIONS, FINAL EQUALIZED VALUE.

Table with columns: VALUATIONS BY SCHOOL DISTRICTS AS EQUALIZED BY DEPARTMENT OF TAXATION, TAXES, PAID, WHEN PAID, Number of Receipt, March Settlement 1959, June Settlement 1959, Penalty, November Settlement 1959, Penalty, Collections to First Monday in January 1960, Penalty, Delinquent on First Monday in January 1960, Total Delinquent Tax and Penalty, REMARKS.

Real 14-35

Minnesota Child Welfare Branch



















Assessment Roll and Tax List of Real Property in the Town of Ureng #4

Cass County, Minnesota, for Taxes for the Year 1958.

Form SCD 1-15-58 REVISED, MINNAPOLIS

Table with columns: IN WHOSE NAME ASSESSED, TO WHOM TRANSFERRED, DESCRIPTION OF PROPERTY, TRUE AND FULL VALUATIONS, ASSESSED VALUATIONS, and FINAL EQUALIZED VALUE. Includes entries for Forest B. Simpson, Walter N. Mattson, Henry J. + Elvera P. Freeman, and Frank Osborne.

Table with columns: VALUATIONS BY SCHOOL DISTRICTS AS EQUALIZED BY DEPARTMENT OF TAXATION, TAXES, PAID, WHEN PAID, and REMARKS. Includes tax rates for various districts and payment dates like MAY 29 1959.

Real 143-25

143-30

Method City of Ureng Beach







Assessment Roll and Tax List of Real Property in the Town of Union #4

Indicate Type of Property: R-Residential, C-Commercial, I-Industrial, U-Utility, F-Farm, L-Lakeshore, T-Timber, M-Mineral

Form SCD 1-15-55 MINN. STATE GOVERNMENT, MINNEAPOLIS

Real 1-15-55

Table with columns: IN WHOSE NAME ASSESSED, TO WHOM TRANSFERRED, DESCRIPTION OF PROPERTY, TRUE AND FULL VALUATIONS, ASSESSED VALUATIONS, FINAL EQUALIZED VALUE.

Cass County, Minnesota, for Taxes for the Year 1958.

Table with columns: SOLD FOR TAXES, VALUATIONS BY SCHOOL DISTRICTS AS EQUALIZED BY DEPARTMENT OF TAXATION, SPECIAL TAXES, TOTAL TAXES, PAID, WHEN PAID, Number of Receipt, March Settlement, June Settlement, November Settlement, Collections to First Monday in January, Delinquent on First Monday in January, Total Delinquent Tax and Penalty, REMARKS.

1-15-55

1-15-55

1-15-55

1-15-55

1-15-55

1-15-55

1-15-55







Assessment Roll and Tax List of Real Property in the Town of Union #4

Indicate Type of Property: R-Residential, C-Commercial, I-Industrial, U-Utility, F-Farm, L-Lakeshore, T-Timber, M-Mineral

Form 500-11-54-55

Table with columns: IN WHOSE NAME ASSESSED, TO WHOM TRANSFERRED, DESCRIPTION OF PROPERTY, TRUE AND FULL VALUATIONS, ASSESSED VALUATIONS, and FINAL EQUALIZED VALUE.

Cass County, Minnesota, for Taxes for the Year 1958.

Table with columns: SOLD FOR TAXES, VALUATIONS BY SCHOOL DISTRICTS AS EQUALIZED BY DEPARTMENT OF TAXATION, Tax including State Homestead, State Tax on Non-Homestead, SPECIAL TAXES, TOTAL TAXES, PAID, WHEN PAID, Number of Receipt, March Settlement 1959, June Settlement 1959, Penalty, November Settlement 1959, Penalty, Collections to First Monday in January 1960, Penalty, Delinquent on First Monday in January 1960, Total Delinquent Tax and Penalty, REMARKS.

Real 14-35

14-29

14-30

Method

Child's name

Barrett



Assessment Roll and Tax List of Real Property in the Town of Union #4

Indicate Type of Property: R-Residential, C-Commercial, I-Industrial, U-Utility, F-Farm, L-Lakeshore, T-Timber, M-Mineral

Form 500 BILLS-SALE DEEDS, EMINENT DOMAIN

Table with columns: IN WHOSE NAME ASSESSED, TO WHOM TRANSFERRED, DESCRIPTION OF PROPERTY (SUBDIVISION, Sec. of Lot, Town or Block, Rng., Number of Acres of Land), TRUE AND FULL VALUATIONS (LAND, BUILDINGS, MACHINERY, TOTAL), ASSESSED VALUATIONS (RURAL, ALL OTHER, MACHINERY, TOTAL ASSESSED VALUE), and FINAL EQUALIZED VALUE.

Cass County, Minnesota, for Taxes for the Year 1958.

Table with columns: SOLD FOR TAXES, VALUATIONS BY SCHOOL DISTRICTS AS EQUALIZED BY DEPARTMENT OF TAXATION (District No., Rate), Tax including State Homestead, State Tax on Non-Homestead, SPECIAL TAXES, TOTAL TAXES, PAID, WHEN PAID, Number of Receipt, March Settlement 1959, June Settlement 1959, Penalty, November Settlement 1959, Collections to First Monday in January 1960, Delinquent on First Monday in January 1960, Total Delinquent Tax and Penalty, REMARKS.

Real 1-3-36

1-3-36











































Assessment Roll and Tax List of Real Property in the Town of Young #4, Cass County, Minnesota, for Taxes for the Year 1958.

Cass County, Minnesota, for Taxes for the Year 1958.

Form 501-1-58 MINN. STATE GOVERNMENT, MINNEAPOLIS

\* Indicate Type of Property: R-Residential, C-Commercial, I-Industrial, U-Utility, F-Farm, L-Lakeshore, T-Timber, M-Mineral

Table with columns: IN WHOSE NAME ASSESSED, TO WHOM TRANSFERRED, DESCRIPTION OF PROPERTY, TRUE AND FULL VALUATIONS, ASSESSED VALUATIONS, VALUATIONS BY SCHOOL DISTRICTS AS EQUALIZED BY DEPARTMENT OF TAXATION, SOLD FOR TAXES, PAID, WHEN PAID, Number of Receipt, March Settlement 1959, June Settlement 1959, Penalty, November Settlement 1959, Penalty, Collections to First Monday in January 1960, Penalty, Delinquent on First Monday in January 1960, Total Delinquent Tax and Penalty, REMARKS.



Assessment Roll and Tax List of Real Property in the Town of Union #4

Cass County, Minnesota, for Taxes for the Year 1958.

Form 500 UNIFORM COUNTY, MINNESOTA

Indicate Type of Property: R-Residential, C-Commercial, I-Industrial, U-Utility, F-Farm, L-Lakeshore, T-Timber, M-Mineral

Table with columns: IN WHOSE NAME ASSESSED, TO WHOM TRANSFERRED, DESCRIPTION OF PROPERTY, TRUE AND FULL VALUATIONS, ASSESSED VALUATIONS, VALUATIONS BY SCHOOL DISTRICTS AS EQUALIZED BY DEPARTMENT OF TAXATION, SOLD FOR TAXES, PAID, WHEN PAID, Number of Receipt, March Settlement 1959, June Settlement 1959, Penalty, November Settlement 1959, Penalty, Collections to First Monday in January 1960, Penalty, Delinquent on First Monday in January 1960, Total Delinquent Tax and Penalty, REMARKS.



Assessment Roll and Tax List of Real Property in the Town of Young #4

Cass County, Minnesota, for Taxes for the Year 1958.

Form 500 UNIFORM STATE PROPERTY TAX MAPS

\* Indicate Type of Property: R-Residential, C-Commercial, I-Industrial, U-Utility, F-Farm, L-Lakeshore, T-Timber, M-Mineral

Table with columns: IN WHOSE NAME ASSESSED, TO WHOM TRANSFERRED, DESCRIPTION OF PROPERTY, TRUE AND FULL VALUATIONS, ASSESSED VALUATIONS, VALUATIONS BY SCHOOL DISTRICTS AS EQUALIZED BY DEPARTMENT OF TAXATION, TAXES, PAID, WHEN PAID, Number of Receipt, March Settlement 1959, June Settlement 1959, Penalty, November Settlement 1959, Penalty, Collections to First Monday in January 1960, Penalty, Delinquent on First Monday in January 1960, Total Delinquent Tax and Penalty, REMARKS.

Real 14-35

4-2-59

4-5-59

Patrol

Original Book











Assessment Roll and Tax List of Real Property in the Town of Union #4

Indicate Type of Property: R-Residential, C-Commercial, I-Industrial, U-Utility, F-Farm, L-Lakeshore, T-Timber, M-Mineral

Table with columns: IN WHOSE NAME ASSESSED, TO WHOM TRANSFERRED, DESCRIPTION OF PROPERTY, TRUE AND FULL VALUATIONS, ASSESSED VALUATIONS, FINAL EQUALIZED VALUE.

Cass County, Minnesota, for Taxes for the Year 1958.

Table with columns: VALUATIONS BY SCHOOL DISTRICTS AS EQUALIZED BY DEPARTMENT OF TAXATION, TAXES, PAID, WHEN PAID, Number of Receipt, March Settlement, June Settlement, November Settlement, Collections to First Monday in January 1960, Delinquent on First Monday in January 1960, Total Delinquent Tax and Penalty, REMARKS.































Assessment Roll and Tax List of Real Property in the Town of Umberg # 4

Cass County, Minnesota, for Taxes for the Year 1958.

\* Indicate Type of Property: R-Residential, C-Commercial, I-Industrial, U-Utility, F-Farm, L-Lakeshore, T-Timber, M-Mineral

Table with columns: IN WHOSE NAME ASSESSED, TO WHOM TRANSFERRED, DESCRIPTION OF PROPERTY, TRUE AND FULL VALUATIONS, ASSESSED VALUATIONS, and FINAL EQUALIZED VALUE. Includes entries for Gordon Rosenmeier & Laurence M. Hall, Chester A. Henry A. & Ernest E. Steina, W. Hodgman & Sons, Inc., Baxter A. Smith, Leonard B. Peterson, Robert A. & Irene E. Coddington, Virginia Coddington Langlois, and Baxter A. Smith, Jr.

Table with columns: SOLD FOR TAXES, VALUATIONS BY SCHOOL DISTRICTS AS EQUALIZED BY DEPARTMENT OF TAXATION, Tax including State Homestead, State Tax on Non-Homestead, SPECIAL TAXES, TOTAL TAXES, PAID, WHEN PAID, Number of Receipt, March Settlement 1959, June Settlement 1959, Penalty, November Settlement 1959, Penalty, Collections to First Monday in January 1960, Penalty, Delinquent on First Monday in January 1960, Total Delinquent Tax and Penalty, and REMARKS. Includes tax payment details and remarks like 'PAID IN FULL' and '13526'.

142-29

142-30

142-31

142-32

142-33

142-34

142-35

142-36

142-37



Assessment Roll and Tax List of Real Property in the Town of Unorg. #4

Cass County, Minnesota, for Taxes for the Year 1958.

Indicate Type of Property: R-Residential, C-Commercial, I-Industrial, U-Utility, F-Farm, L-Lakeshore, T-Timber, M-Mineral

Table with columns: IN WHOSE NAME ASSESSED, TO WHOM TRANSFERRED, DESCRIPTION OF PROPERTY, TRUE AND FULL VALUATIONS, ASSESSED VALUATIONS, VALUATIONS BY SCHOOL DISTRICTS AS EQUALIZED BY DEPARTMENT OF TAXATION, SOLD FOR TAXES, PAID, WHEN PAID, Number of Receipt, March Settlement 1959, June Settlement 1959, Penalty, November Settlement 1959, Penalty, Collections to First Monday in January 1960, Penalty, Delinquent on First Monday in January 1960, Total Delinquent Tax and Penalty, REMARKS.







Assessment Roll and Tax List of Real Property in the Town of Umarog #4

\* Indicate Type of Property: R-Residential, C-Commercial, I-Industrial, U-Utility, F-Farm, L-Lakeshore, T-Timber, M-Mineral

Cass County, Minnesota, for Taxes for the Year 1958.

142-29  
143-30

IN WHOSE NAME ASSESSED	TO WHOM TRANSFERRED	DESCRIPTION OF PROPERTY				No. School District	Indicate Homestead Yes or No	Indicate Agricultural Yes or No	Indicate Type of Property	TRUE AND FULL VALUATIONS				ASSESSED VALUATIONS					FINAL EQUALIZED VALUE		
		SUBDIVISION	Sec. or Lot	Town or Block	Rng.					Number of Acres of Land	Machinery Permanently Attached to Real Estate	TOTAL True and Full Value	RURAL		ALL OTHER			TOTAL ASSESSED VALUE		Total Assessed Value as Equalized by the Board of Review	
													Dollars	Dollars	Dollars	Dollars	Dollars				Dollars
Hug S. Erickson Irene M. Davis		1	NE 1/4 of NE 1/4	1	143 30	36	85	4	no	no	L	450	450	900	300	300	300				
		2	NW 1/4 of NE 1/4			56			no	"	"		390		390	130	130	130			
		3	SW 1/4 of NE 1/4																		
		4	SE 1/4 of NE 1/4																		
		5																			
		6	NE 1/4 of NW 1/4																		
		7	NW 1/4 of NW 1/4																		
		8	SW 1/4 of NW 1/4																		
		9	SE 1/4 of NW 1/4																		
		10																			
Irene M. Davis		11	NE 1/4 of SW 1/4			42			no	"	"	420		420	140	140	140				
		12	NW 1/4 of SW 1/4																		
State of Minnesota		13	SW 1/4 of SW 1/4																		
		14	SE 1/4 of SW 1/4																		
		15																			
		16	NE 1/4 of SE 1/4																		
		17	NW 1/4 of SE 1/4																		
		18	SW 1/4 of SE 1/4																		
		19	SE 1/4 of SE 1/4																		
		20																			
						134 25						1260	450	1710	570	570	570				

SOLD FOR TAXES	VALUATIONS BY SCHOOL DISTRICTS AS EQUALIZED BY DEPARTMENT OF TAXATION						Tax including State Homestead	State Tax on Non-Homestead	SPECIAL TAXES	TOTAL TAXES	PAID	WHEN PAID	Number of Receipt	March Settlement 1959	June Settlement 1959	Penalty	November Settlement 1959	Penalty	Collections to First Monday in January 1960	Penalty	Delinquent on First Monday in January 1960	Total Delinquent Tax and Penalty	REMARKS
	District No.	District No.	District No.	District No.	District No.	District No.																	
	Rate	Rate	Rate	Rate	Rate	Rate																	
	Mills	Mills	Mills	Mills	Mills	Mills																	
1						300	72 78	196	74 74	1 PAID IN FULL	MAY 29 1959	13546	74 74									135 22	
2						130	31 54	84	32 38	2 PAID IN FULL	APR 2 1959	6960	32 38									32 38	
11						140	33 96	92	34 88	11 PAID IN FULL	APR 2 1959	6960	34 88									11 214	
20						570	138 28	372	142 00				142 00										

Patrol  
Child Care Branch







Assessment Roll and Tax List of Real Property in the Town of Union #4

Indicate Type of Property: R-Residential, C-Commercial, I-Industrial, U-Utility, F-Farm, L-Lakeshore, T-Timber, M-Mineral

Cass County, Minnesota, for Taxes for the Year 1958.

Form 300

Table with columns: IN WHOSE NAME ASSESSED, TO WHOM TRANSFERRED, SUBDIVISION, TRUE AND FULL VALUATIONS, ASSESSED VALUATIONS, VALUATIONS BY SCHOOL DISTRICTS AS EQUALIZED BY DEPARTMENT OF TAXATION, SOLD FOR TAXES, PAID, WHEN PAID, Number of Receipt, March Settlement, June Settlement, November Settlement, Collections to First Monday in January 1960, Delinquent on First Monday in January 1960, Total Delinquent Tax and Penalty, REMARKS.

142-29  
143-30

143-30  
143-31

B.S. Nelson Mining & Land Co

12632

U. S. of America

U. S. of America

U. S. of America

24

130

3790

84

3874

3874



























Assessment Roll and Tax List of Real Property in the Town of Union #4

Indicate Type of Property: R-Residential, G-Commercial, I-Industrial, U-Utility, F-Farm, L-Lakeshore, T-Timber, M-Mineral

Form 5CD ILLINOIS STATE BOARD OF TAXATION

Table with columns: IN WHOSE NAME ASSESSED, TO WHOM TRANSFERRED, DESCRIPTION OF PROPERTY, TRUE AND FULL VALUATIONS, ASSESSED VALUATIONS, FINAL EQUALIZED VALUE.

A. M. Ahrens

20 143 30

(Loose Island) Lot 1 17

17

330

330

110

110

Cass County, Minnesota, for Taxes for the Year 1958.

Table with columns: SOLD FOR TAXES, VALUATIONS BY SCHOOL DISTRICTS AS EQUALIZED BY DEPARTMENT OF TAXATION, SPECIAL TAXES, TOTAL TAXES, PAID, WHEN PAID, Number of Receipt, March Settlement, June Settlement, November Settlement, Collections to First Monday in January, Delinquent on First Monday in January, Total Delinquent Tax and Penalty, REMARKS.

1

2

3

4

5

6

7

8

9

10

11

12

13

14

15

16

17

18

19

20

110

26 68

72

274 0

PAID IN FULL MAY 11 1959 7490

2740

135 39

110

26 68

72

274 0

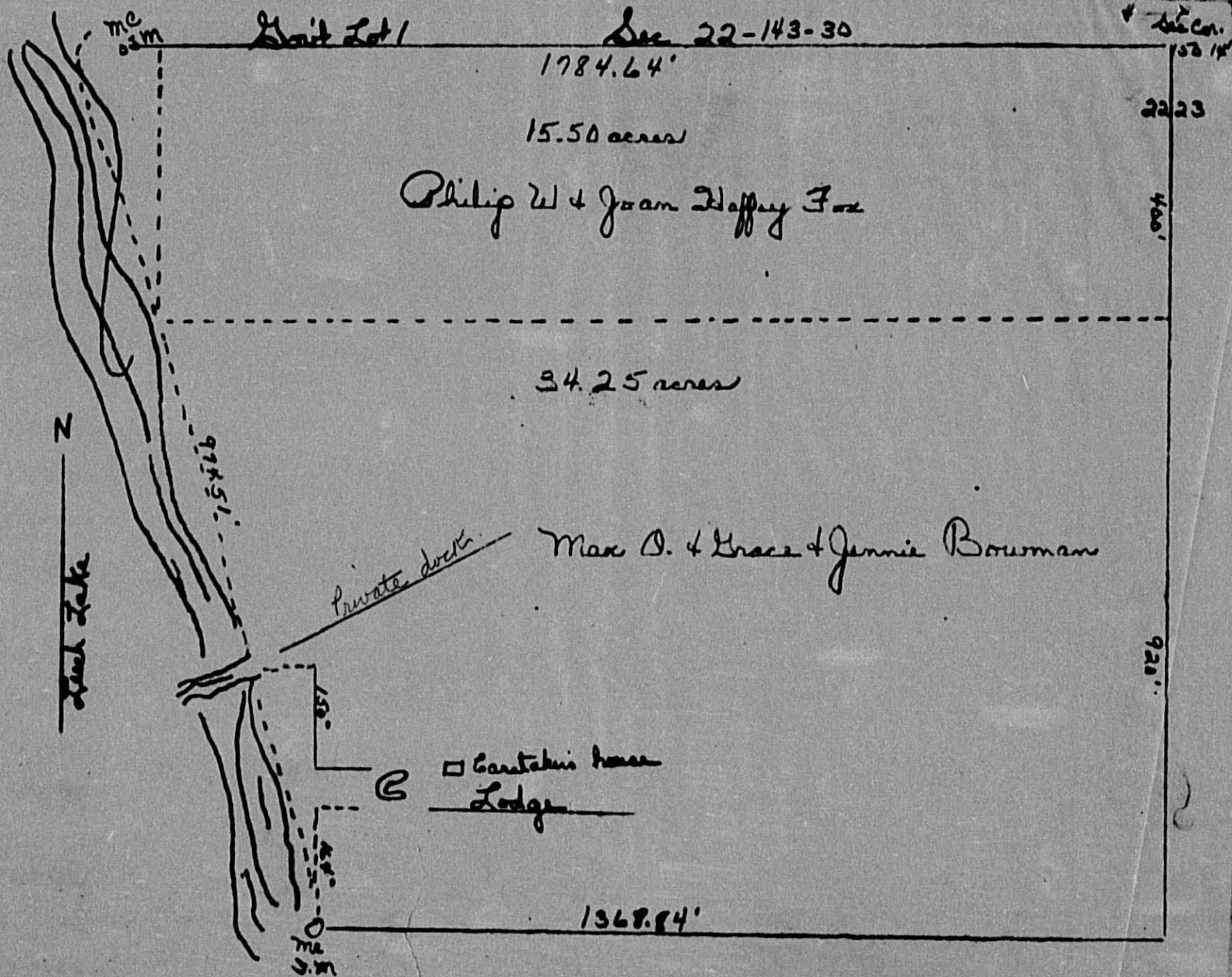
2740

Rollerod Old over Beach















Assessment Roll and Tax List of Real Property in the Town of Union, #4

Indicate Type of Property: R-Residential, C-Commercial, I-Industrial, U-Utility, F-Farm, L-Lakeshore, T-Timber, M-Mineral

Cass County, Minnesota, for Taxes for the Year 1958.

Form 3012

Main table with columns: IN WHOSE NAME ASSESSED, TO WHOM TRANSFERRED, DESCRIPTION OF PROPERTY, TRUE AND FULL VALUATIONS, ASSESSED VALUATIONS, VALUATIONS BY SCHOOL DISTRICTS AS EQUALIZED BY DEPARTMENT OF TAXATION, SOLD FOR TAXES, PAID, WHEN PAID, SPECIAL TAXES, TOTAL TAXES, PAID, WHEN PAID, Number of Receipt, March Settlement 1959, June Settlement 1959, November Settlement 1959, Collections to First Monday in January 1960, Delinquent on First Monday in January 1960, Total Delinquent Tax and Penalty, REMARKS.

Sum of values: 7641, 33576, 41217, 3078, 8609, 11687, 11720, 8692, 3078, 8692, 11720

Vertical text on the right edge: Railroad, Chicago & North Beach



Assessment Roll and Tax List of Real Property in the Town of Young #4

Indicate Type of Property: R-Residential, C-Commercial, I-Industrial, U-Utility, F-Farm, L-Lakeshore, T-Timber, M-Mineral

Cass County, Minnesota, for Taxes for the Year 1958.

Form 300

Main table with columns: IN WHOSE NAME ASSESSED, TO WHOM TRANSFERRED, DESCRIPTION OF PROPERTY, TRUE AND FULL VALUATIONS, ASSESSED VALUATIONS, VALUATIONS BY SCHOOL DISTRICTS AS EQUALIZED BY DEPARTMENT OF VALUATION, TAXES, PAID, WHEN PAID, etc.

13-30

Vertical text on the right edge of the page.















Assessment Roll and Tax List of Real Property in the Town of Union # 4

Indicate Type of Property: R-Residential, C-Commercial, I-Industrial, U-Utility, F-Farm, L-Lakeshore, T-Timber, M-Mineral

Cass County, Minnesota, for Taxes for the Year 1958.

Table with columns: IN WHOSE NAME ASSESSED, TO WHOM TRANSFERRED, DESCRIPTION OF PROPERTY, TRUE AND FULL VALUATIONS, ASSESSED VALUATIONS, VALUATIONS BY SCHOOL DISTRICTS AS EQUALIZED BY DEPARTMENT OF TAXATION, SOLD FOR TAXES, PAID, WHEN PAID, Number of Receipt, March Settlement 1959, June Settlement 1959, Penalty, November Settlement 1959, Penalty, Collections to First Monday in January 1960, Penalty, Delinquent on First Monday in January 1960, Total Delinquent Tax and Penalty, REMARKS.







