

ASSESSMENT & TAX LIST - 1957

Unorg. No. 4



















COLLECTIONS OF TAXES OF 1957

*Town* OF *Unorg #4*, CASS COUNTY, MINNESOTA

NAME OF OWNER	FUNDS	MARCH SETTLEMENT	JUNE SETTLEMENT	NOV. SETTLEMENT	Amount Collected from Nov. 1956 to First Monday in Jan. 1957	REDUCTIONS	Total Reductions and Collected	BALANCE UNCOLLECTED	ADDITIONS	Total Uncollected to First Monday in January, 1957
		1957	1957	1957						
	State-Non-Homestead,	2171	7146	4097	733					
	State-Homestead,	1975	10385	4750	1283					
	County Revenue,	10050	52841	24170	6530					
	County Road and Bridge,	4930	25919	11856	3202					
	County Welfare,	15495	81474	37267	10067					
	County Bond and Interest,	1423	7482	3422	925					
	Welfare Deficit	923	4851	2221	600					
	R+B. Ind. Proj.	1644	8647	3952	1068					
	PERA	963	5064	2316	626					
	Town Revenue,									
	Town Road and Bridge,	3286	17281	7904	2135					
	Town Drag,									
	Town State Loan,									
	School Local 1 Mill,	329	1728	790	214					
	School Special,	14733	46699	30581	10677					
	School State Loan,	398	2037	1152						
	Deficiency	10866	60198	26447	5466					
	Union B.+D.	2772	15196	6721	2028					
	Transportation	336	1762	806	217					
	C.O.	7434	37841	17485	5915					
	PERA	135	1102	390						
	Co. Nurse	657	3457	1581	427					
	R+B. Bldg.	657	3457	1580	427					
	Cass Co. Agri	164	865	395	107					
		81341	427432	189883	52647					

MARCH SETTLEMENT	School District No.	LOCAL 1 MILL	SPECIAL	STATE LOAN	Efficiency	Transp.	C.O.	B.+D.	PERA	TOTALS
	118a	37	921	300	598	38	800	644	102	3440
	1197a	202	10100		5172	207	5595	1918		23194
	Un a									
	Un 7a	78	3112		4901	79	778			8948
	1187a	12	600	98	195	12	261	210	33	1421
	Totals	329	14733	398	10866	336	7434	2772	135	37003
	118a	106	2646	863	1719	108	2300	1849	292	9883
	1157a	137	6850		8905	140	1370	1370	412	19184
	1197a	996	49802		25498	1016	27592	9462		14366
	1187a	144	3599	1174	2338	146	3128	2515	398	13442
	Un 7a	345	13802		21738	352	3451			39688
	Totals	1728	76699	2037	60198	1762	37841	15196	1102	196563
	118a	116	2895	944	1881	118	2516	2023	320	10813
	1187a	25	1274	208	414	26	554	445	70	3016
	1197a	448	22383		11460	457	12400	4253		51401
	119 a	201	4029		12672	205	2015			19142
	Totals	790	30581	1152	26447	806	17485	6721	390	84372
	119a	214	10677		5466	217	5915	2028		24517
	Totals	214	10677		5466	217	5915	2028		24517
	Totals									
	Totals									

1-43-29  
1-43-30  
Fairwood  
Personal



Assessment Roll and Tax List of Real Property in the Town of Umong #4

Indicate Type of Property: R-Residential, C-Commercial, I-Industrial, U-Utility, F-Farm, L-Lakeshore, T-Timber, M-Mineral

Cass County, Minnesota, for Taxes for the Year 1957.

Form SCD (56) MILLER-DIXON COMPANY, MINNEAPOLIS

Real 11-22-25

IN WHOSE NAME ASSESSED	TO WHOM TRANSFERRED	DESCRIPTION OF PROPERTY				TRUE AND FULL VALUATIONS										FINAL EQUALIZED VALUE		
		SUBDIVISION	Sec. or Lot	Town or Block	No. of Acres of Land	Machinery Permanently Attached to Real Estate	LAND Exclusive of Structures and Improvements	BUILDINGS and Other Structures	Machinery Permanently Attached to Real Estate	RURAL			ALL OTHER				TOTAL ASSESSED VALUE	Total Assessed Value as Equalized by the Board of Review
										Acres	100ths	Homestead Up to \$1,000 20%	Over \$4,000 and Non-Homestead 33 1/3%	Timber Land Class 3e 20%	Homestead Up to \$1,000 25%			
Stanley Clark & Co. E. Ferrell		NE 1/4 of NE 1/4 Lot 1	1	14 & 25	675													
Morris S. & Margaret A. Olson		NW 1/4 of NE 1/4 NW 1/2 of Lot 4	2		1798													
Morris Olson		SW 1/4 of NE 1/4 Lot 3	3		3910													
U. S. of America		SE 1/4 of NE 1/4	4															
Raymond M. & Anna S. Alstad		1/2 of Lot 4	5		1797													
Oscar & Fernie Olson		Lot 5 less S. 400' of that part lying E. of Hwy	6		35													
U. S. of America		NW 1/4 of NW 1/4 Lot 6	7															
U. S. of America		SW 1/4 of NW 1/4	8															
U. S. of America		SE 1/4 of NW 1/4	9															
Raymond M. & Anna S. Alstad		1/4 of that part of Lot 5 lying E. of Hwy	10		425													
State of Minnesota		NE 1/4 of SW 1/4	11															
U. S. of America		NW 1/4 of SW 1/4	12															
U. S. of America		SW 1/4 of SW 1/4	13															
U. S. of America		SE 1/4 of SW 1/4	14															
U. S. of America			15															
U. S. of America		NE 1/4 of SE 1/4	16															
U. S. of America		NW 1/4 of SE 1/4	17															
U. S. of America		SW 1/4 of SE 1/4	18															
U. S. of America		SE 1/4 of SE 1/4	19															
			20															

12105

SOLD FOR TAXES	VALUATIONS BY SCHOOL DISTRICTS AS EQUALIZED BY DEPARTMENT OF TAXATION						Tax Including State Homestead	State Tax on Non-Homestead	SPECIAL TAXES	TOTAL TAXES	PAID	WHEN PAID	Number of Receipt	March Settlement 1958	June Settlement 1958	Penalty	November Settlement 1958	Penalty	Collections to First Monday in January 1959	Penalty	Delinquent on First Monday in January 1959	Total Delinquent Tax and Penalty	REMARKS
	District No.	District No.	District No.	District No.	District No.	District No.																	
	Rate	Rate	Rate	Rate	Rate	Rate																	
1																							
2																							
3																							
4																							
5																							
6																							
7																							
8																							
9																							
10																							
11																							
12																							
13																							
14																							
15																							
16																							
17																							
18																							
19																							
20																							

465  
409  
474

11690 272

11962

8122

2068

1772























































Assessment Roll and Tax List of Real Property in the Town of Worona #4

Cass County, Minnesota, for Taxes for the Year 1957.

Form 5CD (56) BILLS-GAYE COMPANY, MINNEAPOLIS

\* Indicate Type of Property: R-Residential, C-Commercial, I-Industrial, U-Utility, F-Farm, L-Lakeshore, T-Timber, M-Mineral

Real Estate

2

3

4

5

6

7

8

9

10

11

12

13

14

15

16

17

18

19

20

21

22

23

24

25

26

27

28

29

30

31

32

33

34

35

36

37

38

39

40

41

42

43

44

45

46

47

48

49

50

51

52

53

54

55

56

57

58

59

60

61

62

63

64

65

66

67

68

69

70

71

72

73

74

75

76

77

78

79

80

81

82

83

84

85

86

87

88

89

90

91

92

93

94

95

96

97

98

99

100

101

102

103

104

105

106

107

108

109

110

111

112

113

114

115

116

117

118

119

120

121

122

123

124

125

126

127

128

129

130

131

132

133

134

135

136

137

138

139

140

141

142

143

144

145

146

147

148

149

150

151

152

153

154

155

156

157

158

159

160

161

162

163

164

165

166

167

168

169

170

171

172

173

174

175

176

177

178

179

180

181

182

183

184

185

186

187

188

189

190

191

192

193

194

195

196

197

198

199

200

201

202

203

204

205

206

207

208

209

210

211

212

213

214

215

216

217

218

219

220

221

222

223

224

225

226

227

228

229

230

231

232

233

234

235

236

237

238

239

240

241

242

243

244

245

246

247

248

249

250

251

252

253

254

255

256

257

258

259

260

261

262

263

264

265

266

267

268

269

270

271

272

273

274

275

276

277

278

279

280

281

282

283

284

285

286

287

288

289

290

291

292

293

294

295

296

297

298

299

300

301

302

303

304

305

306

307

308

309

310

311

312

313

314

315

316

317

318

319

320

321

322

323

324

325

326

327

328

329















































































































































Assessm

Govt Lot 1 - Dec. 22 - 143-30

1784.64'

Sec. 22, T. 33, R. 14

U-Utility, F-Farm, L-Lakeshore, T-Timber, M-Mineral

ASSESSED VALUATIONS

Timber Land Class de 20%	Homestead Up to \$1,000 25%	Over \$4,000 and Non-Homestead 40%	MACHINERY Permanently Attached to Real Estate 33 1/3%	TOTAL ASSESSED VALUE	Total Assessed Value as Equalized by the Board of Review	FINAL EQUALIZED VALUE

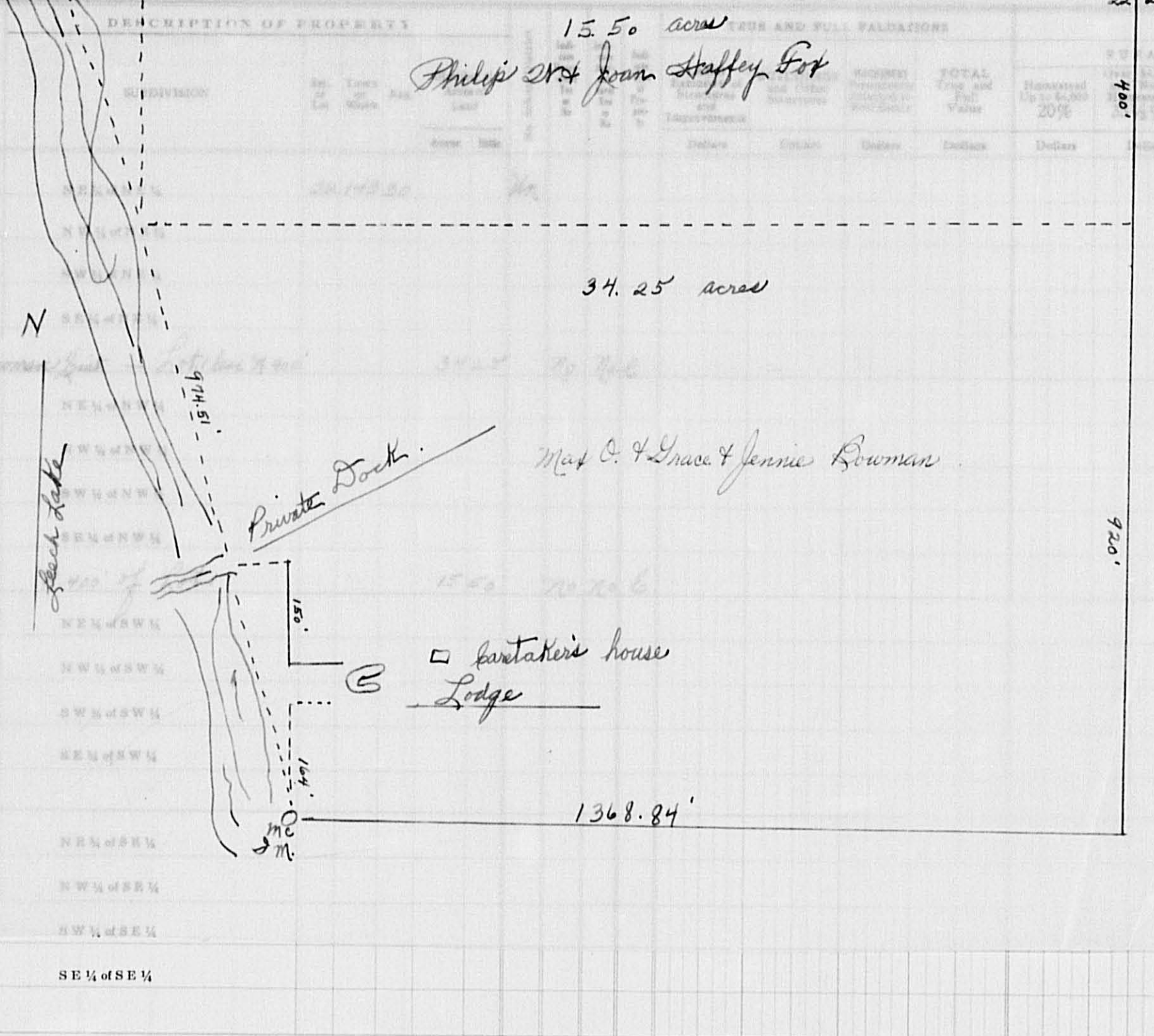
VALUATIONS BY SCHOOL DISTRICTS AS EQUALIZED BY DEPARTMENT OF TAXATION

SOLD FOR TAXES	VALUATIONS BY SCHOOL DISTRICTS AS EQUALIZED BY DEPARTMENT OF TAXATION						Tax including State Homestead	State Tax on Non-Homestead	SPECIAL TAXES	TOTAL TAXES	PAID	WHEN PAID	Number of Receipt	March Settlement 1958	June Settlement 1958	Penalty	November Settlement 1958	Penalty	Collections to First Monday in January 1959	Penalty	Delinquent on First Monday in January 1959	Total Delinquent Tax and Penalty	REMARKS
	District No. Rate	District No. Rate	District No. Rate	District No. Rate	District No. Rate	District No. Rate																	

Cass County, Minnesota, for Taxes for the Year 1957.

IN WHOSE NAME ASSESSED

TO WHOM TRANSFERRED



Max O. & Grace J. Bowman 1/2 inty

Philip & Joan Haffey Fox

Max O. & Grace & Jennie Bowman

Bartaker's house Lodge

4975

810

19710 534

20274

20244

PAID IN FULL SEP 11 1958 5538

PAID IN FULL SEP 5 1958 15466

17896 377

2748 82

7658

7267











Assessment Roll and Tax List of Real Property in the Town of Down of County Down # 4

\* Indicate Type of Property: R-Residential, C-Commercial, I-Industrial, U-Utility, F-Farm, L-Lakeshore, T-Timber, M-Mineral

Form SCD (56) 1957-58

IN WHOSE NAME ASSESSED	TO WHOM TRANSFERRED	DESCRIPTION OF PROPERTY					TRUE AND FULL VALUATIONS											FINAL EQUALIZED VALUE		
		Subdivision	Sec. or Lot	Town or Block	Rng.	Number of Acres of Land	LAND Exclusive of Structures and Improvements	BUILDINGS and Other Structures	MACHINERY Permanently Attached to Real Estate	TOTAL Trug and Full Value	ASSESSED VALUATIONS					TOTAL ASSESSED VALUE	Total Assessed Value as Equalized by the Board of Review			
											RURAL		ALL OTHER						Machinery Attached to Real Estate	
					Acres	Dollars	Dollars	Dollars	Dollars	Dollars	Dollars	Dollars	Dollars	Dollars	Dollars	Dollars	Dollars	Dollars		Dollars
O. W. & Myrtle E. Christenson		E 1/2 of Lot 14	31	143	30	20														
"		NW 1/4 of NE 1/4 Lot 9				40														
Harry E. & Dorothy A. Simon		6.6 acs of Lot 4				6														
Julian D. Meland		Lot 4 less 6.6 acs																		
L. S. Thorpe		Lot 1 less sold				40														
O. W. & Myrtle E. Christenson		E 1/2 of E 1/2 of Lot 14				5														
Harry & Alice James		Part of Lot 1 less sold																		
Harry E. & Dorothy A. Simon		Lot 3 less 2x50' of E 200'				20	90													
Harry E. & Alice R. James		Lot 8 less 7x500' & less sold				2	725													
A. M. & Vera Schenbrenner		Lot 2 less platted & less sold				3	45													
Clarence Hecter		E 1/2 of Lot 2 less 1/200'				10	68													
Levit & Harriet Tom Armsch		2x50' of E 200' of Lot 3				75														
Raymond J. Scott		100' x 250' of Lot 8				06														
O. W. & Myrtle E. Christenson		E 1/2 of Lot 14 less sold				40														
H. Claude & Margaret Helen Tunden		E 1/2 of E 1/2 of Lot 2 less E 150'				6	30													
D. H. & H. M. Buckley		2x500' of Lot 8																		
Fred & Park E. Christian		25' x 101' x 250' of Lot 8																		
Nelson H. & Vera M. Fitters		25' x 101' x 250' of Lot 8				35														
Orrin E. Thompson		6.150' of E 1/2 of Lot 2				35														
State of Minnesota		Lot 7																		

(Continued on next page) 221 09

Cass County, Minnesota, for Taxes for the Year 1957.

SOLD FOR TAXES	VALUATIONS BY SCHOOL DISTRICTS AS EQUALIZED BY DEPARTMENT OF TAXATION						Tax including State Homestead	State Tax on Non-Homestead	SPECIAL TAXES	TOTAL TAXES	PAID	WHEN PAID	Number of Receipt	March Settlement 1958	June Settlement 1958	Penalty	November Settlement 1958	Penalty	Collections to First Monday in January 1959	Penalty	Delinquent on First Monday in January 1959	Total Delinquent Tax and Penalty	REMARKS	
	District No.	District No.	District No.	District No.	District No.	District No.																		
	Rate	Rate	Rate	Rate	Rate	Rate																		
1																								
2																								
3																								
4																								
5																								
6																								
7																								
8																								
9																								
10																								
11																								
12																								
13																								
14																								
15																								
16																								
17																								
18																								
19																								
20																								

Ref. to CE # 16359  
Blind to Mrs. Sorenson  
239.52  
on Rev. 18611/239.52

FAIRMWOOD

FRISCO























