

ASSESSMENT & TAX LIST  
Unorganized No. 4  
1950















Assessor's Return

FORM 2 HALLS-BATH DEPT., MINNEAPOLIS

NAMES OF OWNERS

Treasurer's Office, Cass County, Minnesota

RECEIVED this, the first Monday (being the 2 day) of January, A. D. 1951, of L. C. Peterson, Auditor of said County, Minnesota, the Tax List of all Taxable Real and Personal Property in the Town of Mary # 4 in said County for the year A. D. 1950, as specified above and amounting to 100 Dollars

Paul Jewell County Treasurer. E.C.P.

Auditor's Office, Cass County, Minnesota

I, Auditor of said County, and State of Minnesota, do hereby certify that the following is a correct list of the Taxes levied on the Real and Personal Property in the of for the year 1950.

WITNESS my hand and official seal, the day of 1951.

(SEAL) County Auditor.

195

Office of County Treasurer, Cass County, Minnesota

To L. C. Peterson, County Auditor:

Sir: I herewith return to you the Tax List for the Town of Mary # 4 in said County for the year 1950, heretofore received from you. I certify that I have compared the same with the duplicate receipts in your office, and have written opposite the amount of each tax so received the words "First Quarter Paid", "Second Quarter Paid", "Third Quarter Paid" or "Paid in full" as the case may be, and the number of my receipt given in discharge of said tax, and each tract or lot of real property against which the taxes remain unpaid is delinquent for said year.

Yours respectfully,

County Treasurer.

Auditor's Office, Cass County, Minnesota

I hereby certify that on the first Monday in January 1952, I received of County Treasurer, the Tax List of the in said County for the year 1950; that I have compared the said list with the Statements received for by said Treasurer, which are on file in my office, and that each tract or lot of real property therein against which the taxes, or any part thereof, remains unpaid are delinquent for said year.

(SEAL) County Auditor.

Real Estate

1

1-3-50

System FAIRMWOOD

PERSONAL







Assessor's Return

COLLECTIONS OF TAXES OF 1950, *June* OF *January 4*, CASS COUNTY, MINNESOTA

FORM 2 MILLER-DAVIS COMPANY, MINNEAPOLIS

NAMES OF OWNERS

FUNDS	MARCH SETTLEMENT 1950	JUNE SETTLEMENT 1950	NOV. SETTLEMENT 1950	Amount Collected from Nov. 1950 to First Monday in Jan. 1951	REDUCTIONS	Total Reductions and Collected	BALANCE UNCOLLECTED	ADDITIONS	Total Uncollected to First Monday in January, 1951
State—Non-Homestead,	1178	3496	1731	621					
State—Homestead,	1182	3932	1806	935					
County Revenue,	6878	24624	11312	5855					
County Road and Bridge,	3636	12980	7763	2086					
County Welfare,	11336	40467	18571	9622					
County Bond and Interest, <i>Pub Emp Ret</i>	4465 107	15939 382	7322 175	3790 91					
Town Revenue,									
Town Road and Bridge,	2674	9544	4385	2269					
Town Drag,									
Town State Loan,									
School Local 1 Mill,	268	955	437	227					
School Special,	5778	23935	8928	6773					
School State Loan,	3262	2405	1117	146					
Deficiency	10538	22196	15581	3803					
Tuition									
Transportation	802	2863	1315	680					
<i>B+I un</i>	3259	5919	1857	1109					
<i>O+I #5</i>	424	5286	1134	1419					
<i>G.O.</i>	1131	4301	2704	953					
<i>Ret</i>		28							
<i>B+I C1</i>			1442	112					
	56880	179752	86610	41491					

	LOCAL 1 MILL	SPECIAL	STATE LOAN	<i>Defin</i>	<i>Transp.</i>	<i>B+I un</i>	<i>G.O.</i>	<i>B+I #5</i>	<i>C1</i>	<i>Ret. Ret.</i>	TOTALS
MARCH SETTLEMENT											
School District No. <i>A-C-1</i>	.95	1422	2654	4266	287	2038					10757
<i>na-C1</i>	.22	651	608	977	65	467					2790
<i>na #5</i>	.66	1985		1067	177	331					4357
<i>P. un</i>	.55	878		2725	164	273	285	424		14	4594
<i>na un</i>	.30	902		1503	90	150	545			08	2784
Totals	268	5778	3262	10508	802	3259	1131	424		22	25484
JUNE SETTLEMENT											
School District No. <i>A-5</i>	.97	1449		1555	290	483					4907
<i>na B-</i>	.641	14231		10320	1923	3205	2756	4103			42179
<i>G-I-A-</i>	.104	1559	2905	4669	311	2231					11779
<i>un-A-</i>	.113	1696		5652	339		1130	565		28	9523
Totals	955	23935	2905	22196	2863	5919	4301	5286	1442	28	68388
NOVEMBER SETTLEMENT											
School District No. <i>C/A</i>	.67	1006	1877	3017	201	886					7610
<i>Sa</i>	.177	2657		2852	531	886	762	1134			9999
<i>un A</i>	.38	567		1882	113	188	376				3173
<i>un A</i>	.157	4698		7830	470	783	1566			39	15543
Totals	439	8928	1877	15581	1315	1857	2704	1134	1442	48	35325
NOVEMBER to JANUARY											
School District No. <i>C/A</i>	.02	37	70	112	07						282
<i>na</i>	.222	6652	76	3570	665	1109	953	1419	57		14570
<i>C/A</i>	.03	84		121	08				58		358
Totals	227	6773	146	3803	680	1109	953	1419	112		15222
ADDITIONS											
School District No.											
Totals											
REDUCTIONS											
School District No.											
Totals											

Real Estate

1-3-50

State of Minnesota  
Fairwood  
Personnel







































































Assessment Roll and Tax List of Real Property in the Town of Unorganized #4

Cass County, Minnesota, for Taxes for the Year 1950.

IN WHOSE NAME ASSESSED	TO WHOM TRANSFERRED	DESCRIPTION OF PROPERTY				No. School District	Indicate Homestead Yes or No	Indicate Agricultural Yes or No	TRUE AND FULL VALUATIONS				ASSESSED VALUATIONS					FINAL EQUALIZED VALUE		
		SUBDIVISION	Sec. or Lot	Town or Block	Rng.				Number of Acres of Land	MACHINERY Permanently Attached to Real Estate	TOTAL True and Full Value	RURAL		ALL OTHER		MACHINERY Permanently Attached to Real Estate	TOTAL ASSESSED VALUE		Total Assessed Value as Equalized by the Board of Review	
												Acres	100ths	Homestead Up to \$4,000 20%	Over \$4,000 and Non-Homestead 33 1/3%					Homestead Up to \$4,000 25%
U. S. of America		NE 1/4 of NE 1/4	18	142	25															
U. S. of America		NW 1/4 of NE 1/4																		
U. S. of America		SW 1/4 of NE 1/4																		
U. S. of America		SE 1/4 of NE 1/4																		
U. S. of America		NE 1/4 of NW 1/4																		
State of Minnesota		NW 1/4 of NW 1/4 Lot 1																		
U. S. of America		SW 1/4 of NW 1/4 Lot 2																		
U. S. of America		SE 1/4 of NW 1/4																		
U. S. of America		NE 1/4 of SW 1/4																		
U. S. of America		NW 1/4 of SW 1/4 Lot 3																		
U. S. of America		SW 1/4 of SW 1/4 Lot 4																		
U. S. of America		SE 1/4 of SW 1/4																		
U. S. of America		NE 1/4 of SE 1/4																		
U. S. of America		NW 1/4 of SE 1/4																		
U. S. of America		SW 1/4 of SE 1/4																		
U. S. of America		SE 1/4 of SE 1/4																		

SOLD FOR TAXES	VALUATIONS BY SCHOOL DISTRICTS AS EQUALIZED BY DEPARTMENT OF TAXATION						Tax including State Homestead	State Tax on Non-Homestead	SPECIAL TAXES	TOTAL TAXES	PAID	WHEN PAID	Number of Receipt	March Settlement 1951	June Settlement 1951	Penalty	November Settlement 1951	Penalty	Collections to First Monday in January 1952	Penalty	Delinquent on First Monday in January 1952	Total Delinquent Tax and Penalty	REMARKS
	District No.	District No.	District No.	District No.	District No.	District No.																	
	Rate	Rate	Rate	Rate	Rate	Rate																	
1																							
2																							
3																							
4																							
5																							
6																							
7																							
8																							
9																							
10																							
11																							
12																							
13																							
14																							
15																							
16																							
17																							
18																							
19																							
20																							

1-1-30  
F. L. SYSTEM  
P. H. WOOD















































Assessment Roll and Tax List of Real Property in the Town of Unorganized #4

IN WHOSE NAME ASSESSED	TO WHOM TRANSFERRED	DESCRIPTION OF PROPERTY				TRUE AND FULL VALUATIONS			ASSESSED VALUATIONS					FINAL EQUALIZED VALUE			
		SUBDIVISION	Sec. or Lot	Town or Block	Reg.	Number of Acres of Land	LAND Exclusive of Structures and Improvements	BUILDINGS and Other Structures	MACHINERY Permanently Attached to Real Estate	RURAL		ALL OTHER			MACHINERY Permanently Attached to Real Estate	TOTAL ASSESSED VALUE	Total Assessed Value as Equalized by the Board of Review
										Acres	10ths	Homestead Up to \$4,000 20%	Over \$4,000 and Non-Homestead 33 1/4%				
U. S. of America		NE 1/4 of NE 1/4	30	142	25												
U. S. of America		NW 1/4 of NE 1/4															
U. S. of America		SW 1/4 of NE 1/4															
U. S. of America		SE 1/4 of NE 1/4															
U. S. of America		NE 1/4 of NW 1/4															
U. S. of America		NW 1/4 of NW 1/4 Lot 1															
U. S. of America		SW 1/4 of NW 1/4 Lot 2															
U. S. of America		SE 1/4 of NW 1/4															
U. S. of America		NE 1/4 of SW 1/4															
U. S. of America		NW 1/4 of SW 1/4 Lot 3															
U. S. of America		SW 1/4 of SW 1/4 Lot 4															
U. S. of America		SE 1/4 of SW 1/4															
U. S. of America		NE 1/4 of SE 1/4															
U. S. of America		NW 1/4 of SE 1/4															
State of Minnesota		SW 1/4 of SE 1/4															
William Joslin		SE 1/4 of SE 1/4				40	20	201	201	67		67					
						40		201	201	67		67					

Cass County, Minnesota, for Taxes for the Year 1950.

SOLD FOR TAXES	VALUATIONS BY SCHOOL DISTRICTS AS EQUALIZED BY DEPARTMENT OF TAXATION						Tax including State Homestead	State Tax on Non-Homestead	SPECIAL TAXES	TOTAL TAXES	PAID	WHEN PAID	Number of Receipt	March Settlement 1951	June Settlement 1951	Penalty	November Settlement 1951	Penalty	Collections to First Monday in January 1952	Penalty	Delinquent on First Monday in January 1952	Total Delinquent Tax and Penalty	REMARKS	
	District No.	District No.	District No.	District No.	District No.	District No.																		
	Rate	Rate	Rate	Rate	Rate	Rate																		
1																								
2																								
3																								
4																								
5																								
6																								
7																								
8																								
9																								
10																								
11																								
12																								
13																								
14																								
15																								
16																								
17																								
18																								
19										67	15 18	30	15 48	19	PAID IN FULL MAY 24 1951	7760	15 48							
20										67	15 18	30	15 48	20			15 48							



















































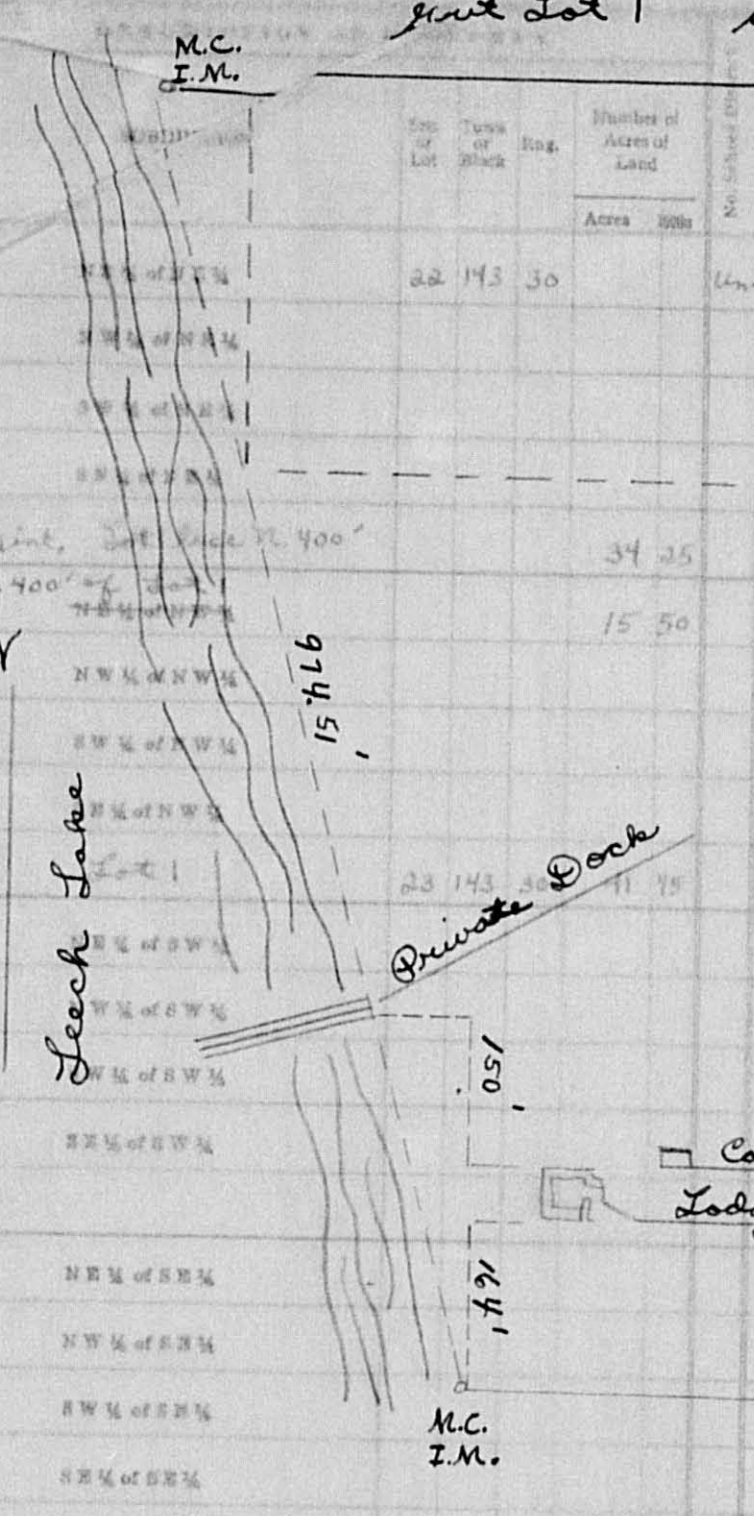








IN WHOSE NAME ASSESSED	TO WHOM TRANSFERRED	Map or Lot	Town or Block	Range	Number of Acres of Land	Improvements	Value	Sec. 22-143-30	Sec. Cor.	AD VALUATIONS	FINAL EQUALIZED VALUE
Max O. + Grace J. Bowman's Int. Jennie Bowman's Int.		22	143	30	34.25	1784.64'	15.50 acres	15	14	HER Over \$4,000 and Non-Homestead 40%	674 741
Wm. H. + Irene B. Mallory					15.50		34.25 acres			MACHINERY Permanently Attached to Real Estate 33 1/8%	100
Leo D. Freeman + Lon V. Swins		23	143	30	11.75		1368.84'				817 910



SOLD FOR TAXES	VALUATIONS BY SCHOOL DISTRICTS AS EQUALIZED BY DEPARTMENT OF TAXATION						Tax including State Homestead	State Tax on Non-Homestead	SPECIAL TAXES	TOTAL TAXES	PAID	WHEN PAID	Number of Receipt	March Settlement 1951	June Settlement 1951	Penalty	November Settlement 1951	Penalty	Collections to First Monday in January 1952	Penalty	Delinquent on First Monday in January 1952	Total Delinquent Tax and Penalty	REMARKS
	District No.	District No.	District No.	District No.	District No.	District No.																	
1																							
5						741	157.30	326	160.56														PAID IN FULL OCT 19 1951
6						100	21.22	44	21.66														
10						910	193.16	400	197.16														1st Half Paid OCT 31 1951 142.70 2nd Half Paid MAY 31 1951 10.35
20						1751	371.68	770	379.38														98.58 259.14 21.66























