

ASSESSMENT & TAX LIST
Unorganized No. 4
1948

Return Showing Gain Received in or Attributed by Elverson, Wathen and Mills in the
County of _____

SUMMARY OF TAX COLLECTION

Original Levy	- - - - -	\$		
Additions	- - - - -	\$		
			\$	
Abatements	- - - - -	\$		
			\$	
			\$	
			COLLECTIONS		
March Settlement	- - - - -	\$	327.55		
June Settlement	- - - - -	\$	1071.16		
November Settlement	- - - - -	\$	903.68		
January Settlement	- - - - -	\$	103.00	\$
				\$
Over Collected	- - - - -	\$		
Under Collected	- - - - -	\$		
Delinquent	- - - - -	\$	\$
Total	- - - - -	\$	\$

REAL

142-29

143-30

Fairwood

Treasurer's Office, Cass County, Minnesota

RECEIVED this, the first Monday (being the 3rd day) of January, A. D. 1949, of L. C. Peterson, Auditor of said County, Minnesota, the Tax List of all Taxable Real and Personal Property in the Town of Wray #4 in said County for the year A. D. 1948, as specified above and amounting to 100 Dollars

Paul H. Jewell
County Treasurer.
L.C.P.

Office of County Treasurer, Cass County, Minnesota

To L. C. Peterson, County Auditor:

Sir:—I herewith return to you the Tax List for the Town of Wray #4 in said County for the year 1948, heretofore received from you. I certify that I have compared the same with the duplicate receipts in your office, and have written opposite the amount of each tax so receipted the words "First Quarter Paid", "Second Quarter Paid", "Third Quarter Paid" or "Paid in full" as the case may be, and the number of my receipt given in discharge of said tax, and each tract or lot of real property against which the taxes remain unpaid is delinquent for said year.

Yours respectfully,
County Treasurer.

Auditor's Office, Cass County, Minnesota

I, Auditor of said County, and State of Minnesota, do hereby certify that the following is a correct list of the Taxes levied on the Real and Personal Property in the of for the year 1948.

WITNESS my hand and official seal, the day of 1949.

(SEAL) County Auditor.

Auditor's Office, Cass County, Minnesota

I hereby certify that on the first Monday in January 1950, I received of County Treasurer, the Tax List of the of in said County for the year 1948; that I have compared the said list with the Statements receipted for by said Treasurer, which are on file in my office, and that each tract or lot of real property therein against which the taxes, or any part thereof, remains unpaid are delinquent for said year.

(SEAL) County Auditor.

REAL

142-29

143-30

Patwood

COLLECTIONS OF TAXES OF 194

OF *Unorg. #4*, CASS COUNTY, MINNESOTA

FUNDS	MARCH SETTLEMENT 1947	JUNE SETTLEMENT 1947	NOV. SETTLEMENT 1947	Amount Collected from Nov. 1947 to First Monday in Jan. 1948	REDUCTIONS	Total Reductions and Collected	BALANCE UNCOLLECTED	ADDITIONS	Total Uncollected to First Monday in January, 1948
State—Non-Homestead,	657	2010	1541	224					
State—Homestead,	498	1580	1432	169					
County Revenue,	4003	12712	11513	1357					
County Road and Bridge,	1232	3911	3542	418					
County Welfare,	8296	26347	23862	2813					
County Bond and Interest,	1351	4293	3886	458					
<i>Skj</i>	1112	3531	3178	377					
Town Revenue,	1711	5432	4922	580					
Town Road and Bridge,	1711	5432	4922	580					
Town Drag,									
Town State Loan,									
School Local 1 Mill,	170	543	472	58					
School Special,	4237	11010	13104	1741					
School State Loan,	231	4268	972						
Deficiency	4895	17983	9860	684					
Tuition									
Transportation	307	978	886	104					
<i>B & I</i>	2580	9194	7456	853					
<i>G. O.</i>	1473	3325	3882	464					
	32755	107116	90368	10300					

	SCHOOL DISTRICT NO.	LOCAL 1 MILL	SPECIAL	STATE LOAN	<i>Defic.</i>	<i>Transp.</i>	<i>B & I</i>	<i>G. O.</i>	TOTALS
MARCH SETTLEMENT	School District No. <i>A-C-1</i>	05	75	120	225	09	108	56	542
	<i>na-c-1</i>	05	138	111	207	08	77		568
	<i>na-5</i>	70	2123		835	127	<i>Rev'd</i> 40	566	4761
	<i>A-UW</i>	54	817		2181	98	801	545	4495
	<i>na-UW</i>	36	1086		1448	65	532	362	3529
Totals		170	4239	231	4895	307	2580	1473	13875
JUNE SETTLEMENT	School District No. <i>A-C-1</i>	178	2668	4268	8003	320	3823		19268
	<i>A-5</i>	16	240		189	29	<i>un.</i> 235	128	837
	<i>na-5</i>	148	4452		1751	267	<i>un.</i> 2181	1187	9986
	<i>A-UW</i>	159	2380		6346	286	2332	1586	13089
	<i>na-UW</i>	42	1270		1694	76	623	424	4129
Totals		543	11010	4268	17983	978	9194	3325	47301
NOVEMBER SETTLEMENT	School District No. <i>A-C-1</i>	33	495	792	1484	57	707		3572
	<i>A-5</i>	50	756		594	71	740	403	2634
	<i>na-5</i>	304	9110		3584	547	4464	2430	20437
	<i>A-UW</i>	27	405		1080	47	397	270	2228
	<i>na-UW</i>	78	2338		3118	140	1146	777	7577
Totals		492	13104	792	7860	886	7456	3882	36472
NOVEMBER to JANUARY	School District No. <i>na-5</i>	38	1741		684	104	853	464	3904
	Totals		38	1741	684	104	853	464	3904
ADDITIONS	School District No.								
	Totals								
REDUCTIONS	School District No.								
	Totals								

REAL

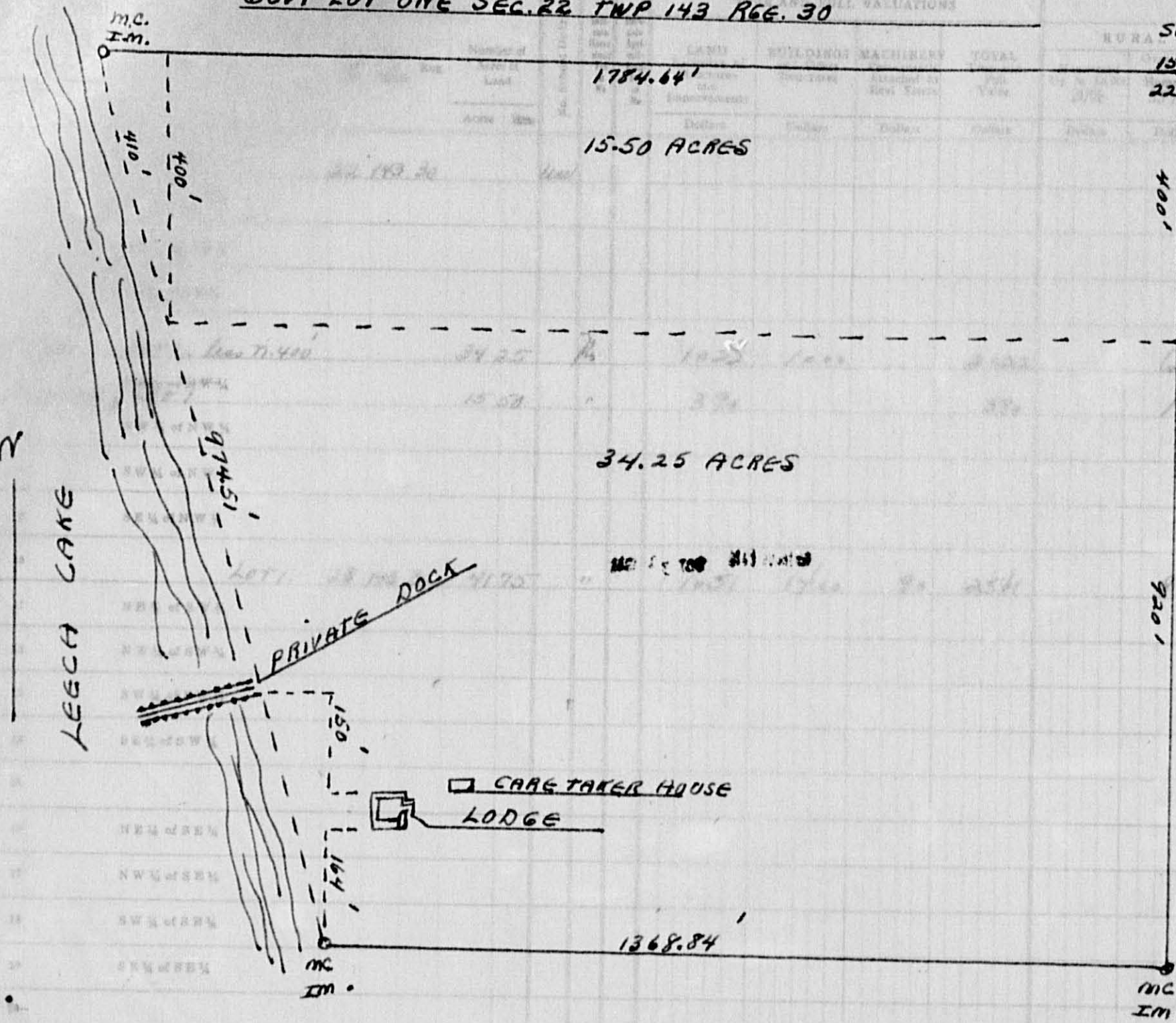
142-29

143-30

Fairwood

IN WHOSE NAME ASSESSED TO WHOM TAXES ARE PAID

GOVT LOT ONE SEC. 22 TWP 143 RGE. 30



May O. + Grace J. Bowman
Wm. H. + Irma B. Mallory

Ed. D. Freeman + Lou
Ray Bitchenauer

ASSESSED VALUATIONS					FINAL EQUALIZED VALUE
ALL OTHER	MACHINERY	Machinery Permanently Attached to Real Estate	TOTAL ASSESSED VALUE	Total Assessed Value as Equalized by the Board of Review	
15.14	22.23	25.00	674.70	130.70	1621

SOLD FOR TAXES	VALUATIONS BY SCHOOL DISTRICTS AS EQUALIZED BY DEPARTMENT OF TAXATION						Tax including State Homestead	State Tax on Non-Homestead	SPECIAL TAXES	TOTAL TAXES	PAID	WHEN PAID	Number of Receipt	March Settlement 1949	June Settlement 1949	Penalty	November Settlement 1949	Penalty	Collections to First Monday in January 1950	Penalty	Delinquent on First Monday in January 1950	Total Delinquent Tax and Penalty	REMARKS	
	District No.	District No.	District No.	District No.	District No.	District No.																		
1																								
2																								
3																								
4																								
5						674	137.44	260		140.04														14004/15404
6						130	26.50	50		27.00														2700/2970
7																								
8																								
9																								
10						847	139.28	364	Abatement \$ 400.00	141.92														34.06 Abated
11																								
12																								
13																								
14																								
15																								
16																								
17																								
18																								
19																								
20																								

91.50 2463 2400 90 4953 1621

30 1651

1651 Wm. 336.66 636 343.02

8799 5393

16704 34.06

Balance Paid 1st Half Paid OCT 31 1949 MAY 9 1949 13448 6450 8799 5393

