

ASSESSMENT & TAX LIST
Unorganized No. 5
1947

INDEX TO SECTIONS

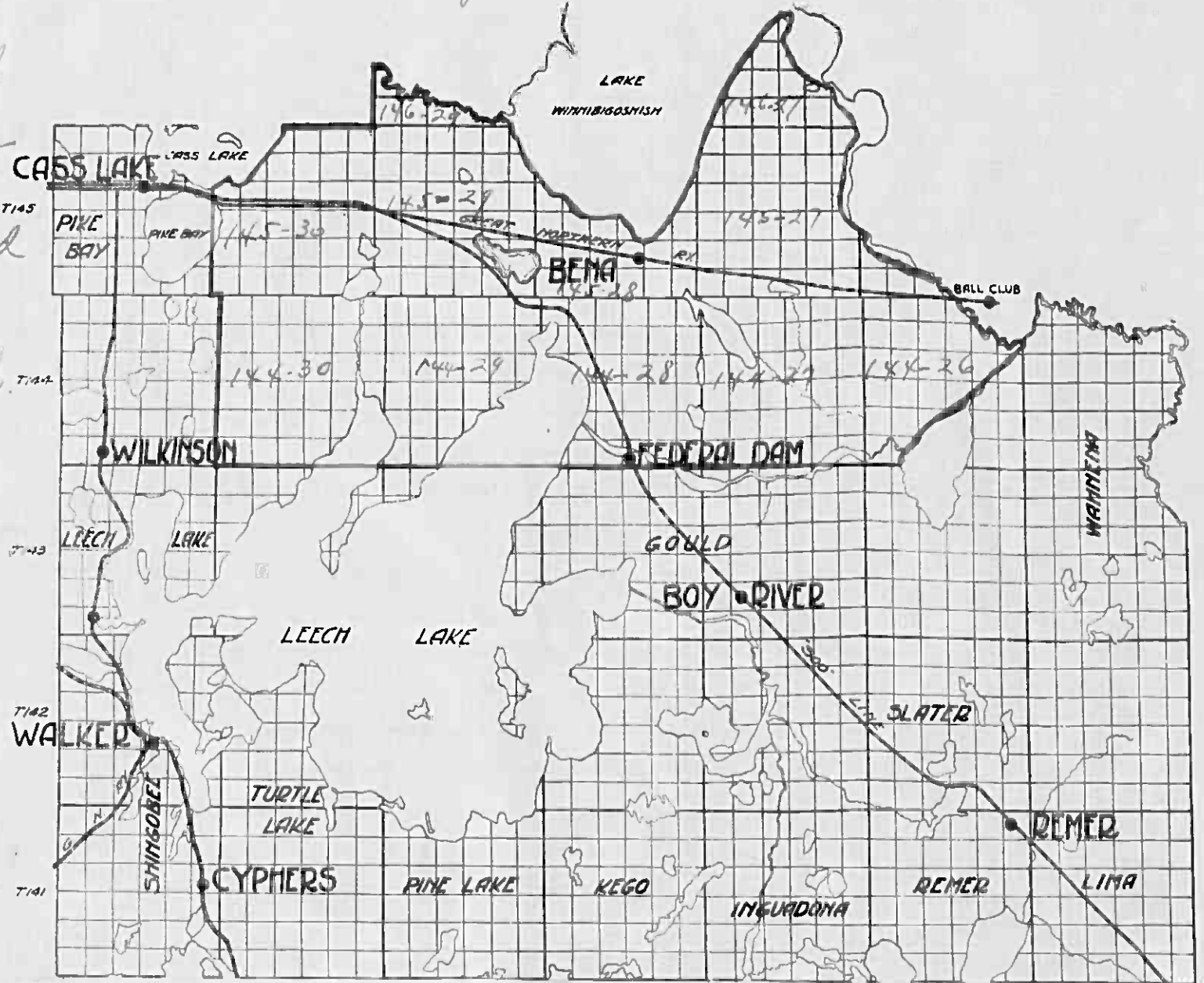
For Convenience of Auditor in Showing Boundaries of School Districts

SECTION PAGE

Sec. 1	
" 2	
" 3	
" 4	
" 5	
" 6	
" 7	
" 8	
" 9	
" 10	
" 11	
" 12	
" 13	
" 14	
" 15	
" 16	
" 17	
" 18	
" 19	
" 20	
" 21	
" 22	
" 23	
" 24	
" 25	
" 26	
" 27	
" 28	
" 29	
" 30	
" 31	
" 32	
" 33	
" 34	
" 35	
" 36	

*Unorganized
Towns No. 5
are outlined
in Red. -
Unorg. Sch.
District.*

Unorg. No. 5



R# 31 30 29 28 27 26 25

Returns Showing Grain Received in or Handled by Elevators, Warehouses and Mills in the _____ of _____ in the _____ County of _____ for the Year Ending May 1, 1947.

NAMES OF OWNERS	ADDRESS	Bushels of Wheat	Bushels of Soy Beans	Bushels of Flax	Total No. of Bushels of Wheat, Soy Beans and Flax	★ Tax of 1/2 Mill per Bushel		Bushels of Corn	Bushels of Barley	Bushels of Rye	Bushels of Oats	Bushels of Buckwheat	Bushels of all Other Grains	Total No. Bushels Corn, Barley, Rye, Oats, Buckwheat and all Other Grains	★ Tax of 1/2 Mill Per Bushel		★ Total Tax		REMARKS		
						Dollars	Cts.								Dollars	Cts.	Dollars	Cts.			

Note ★ Assessors will not fill these Columns

Assessment of

NAME OF OWNER

1
2
3
4
5
6
7
8

Treasurer's Office, Cass County, Minnesota

RECEIVED this 5th day of January, A. D. 1948, of L. Peterson, Auditor of said County, Minnesota, the Tax List of all Taxable Real and Personal Property in the Town of Norg. 5 in said County for the year A. D. 1947, as specified above and amounting to Paula Jewell Dollars
County Treasurer.

Auditor's Office, Cass County, Minnesota

I, _____ Auditor of said County, and State of Minnesota, do hereby certify that the following is a correct list of the Taxes levied on the Real and Personal Property in the _____ of _____ for the year 1947.
WITNESS my hand and official seal, the _____ day of _____ 1948.
(SEAL) _____ County Auditor.

JAN - 3 1949 194

Office of County Treasurer, Cass County, Minnesota

To L. Peterson, County Auditor:
Sir: I herewith return to you the Tax List for the Town of Norg. 5 in said County for the year 1947, heretofore received from you. I certify that I have compared the same with the duplicate receipts in your office, and have written opposite the amount of each tax so received the words "First Quarter Paid", "Second Quarter Paid", "Third Quarter Paid" or "Paid in full" as the case may be, and the number of my receipt given in discharge of said tax, and each tract or lot of real property against which the taxes remain unpaid is delinquent for said year.
Yours respectfully,
Paula Jewell
County Treasurer.

Auditor's Office, Cass County, Minnesota

I hereby certify that on the first Monday in January 1949, I received of _____ 194 _____ County Treasurer, the Tax List of the _____ of _____ in said County for the year 1947; that I have compared the said list with the Statements receipted for by said Treasurer, which are on file in my office, and that each tract or lot of real property therein against which the taxes, or any part thereof, remains unpaid are delinquent for said year.
(SEAL) _____ County Auditor.

Assessment of

TABULAR SCHEDULE OF VALUATIONS,
LEVIED IN THE Township of Unyog OF Unyog

RATES AND TAXES
COUNTY OF CASS, STATE OF MINNESOTA

NAME OF OWNER

School District No.	VALUATION BY SCHOOL DISTRICTS					RATE OF STATE TAXES					RATE OF COUNTY TAXES					RATE OF TOWN TAXES									
	Dollars	Dollars	Dollars	Dollars	Dollars	State Rev.	State Sch'l	Tchr. Ins.	State Debt	Total Rate of State Tax	Rev.	R. & B.	Welfare	Bonds and Int.	Total Rate of County Tax	Rev.	R. & B.	Drag Tax	State Loan	Total Rate of Town Tax					
1			9264	16439	22856	48559				302	22.	7.2	48.	18.	95.2					10.					
2										4.07															
3										7.09															
4																									
5																									
6																									
7																									
8																									

Assessed Val.:
Rural 25703
All other P.P. 22856
Total 48559

Real Est. H. 4498
P.P. 21205
N.H. 22856
Total 48559

RATE OF SCHOOL TAXES										LOCAL MILL AND SPECIAL SCHOOL TAXES BY DISTRICTS										ALL OTHER TAXES		
Local	Special	Transp.	State Loan	Total Rate of Sch'l Tax	Total Rate of all Taxes	Local 1 Mill	Special	State Loan	Transp.	C.O.	B.I.D.	Total School Taxes	FUNDS	Rate	Amounts							
1	15.	15.	1.8	5.	27.1	649	173.12	926	13896	13896	1668	4032	25105	60123	State Revenue							
2	30.	15.	1.8	5.	27.1	799	188.12	3930	117885	58943	7073	19648	106489	313968	State School							
															Teachers Insurance							
															State Debt—Non-Homestead	17890						
															State Debt—Homestead	14665						
															County Revenue	106822						
															County Road and Bridge	34954						
															County Welfare	233075						
															Bonds and Interest	87398						
																4622.49						
															Town Revenue							
															Town Road and Bridge	48551						
															Town Drag							
															Town State Loan	485.51						
															School Local 1 Mill	4856						
															School Special	131781						
															School State Loan							
															Deficiency	72839						
															Transportation	8741						
															Capital Outlay	24280						
															Bond & Interest	131594						
																3740.91						

4856 131781 72839 8741 24280 131594 3740.91

Real Estate 4781.60
P.P. 4392.86
Total 9174.46

Total Number of Acres
Total Levied, \$ 9174.46

State of Minnesota, ss
COUNTY OF CASS
I, D. C. Peterson
Auditor of said County and State of said, do hereby certify that the foregoing is a true and correct Schedule, showing the valuation of all the taxable property, in the Township of Unyog, # 5, in said County, the several rates of Taxation and Totals of the several Tax Funds levied thereon for the year A. D. 1947, day of December A. D. 1947.

Witness my hand and official seal, this 23 day of December A. D. 1947.
D. C. Peterson
County Auditor.



Assessment Roll and Tax List of Real Property in the

Town of Unyorg #5

Cass County, Minnesota, for Taxes for the Year 1947.

Form 4 CD - 1-14-47 - COMPART, MINNESOTA

144-26

IN WHOSE NAME ASSESSED	TO WHOM TRANSFERRED	DESCRIPTION OF PROPERTY					TRUE AND FULL VALUATIONS										FINAL EQUALIZED VALUE Dollars		
		SUBDIVISION	Sec. or Lot	Town or Block	Rng.	Number of Acres of Land Acres 100th	RURAL					ALL OTHER				MACHINERY Permanently Attached to Real Estate 33 1/3%		TOTAL ASSESSED VALUE	Total Assessed Value as Equalized by the Board of Review
							LAND Exclusive of Structures and Improvements	BUILDINGS and Other Structures	MACHINERY Permanently Attached to Real Estate	TOTAL True and Full Value	Homestead Up to \$4,000	Over \$4,000 and Non-Homestead	Homestead Up to \$4,000	Over \$4,000 and Non-Homestead					
											20%	33 1/3%	25%	40%					
		1	NE 1/4 of NE 1/4			12 144 26													
		2	NW 1/4 of NE 1/4																
		3	SW 1/4 of NE 1/4																
		4	SE 1/4 of NE 1/4																
State of Minnesota		5	Let 6																
		6	NE 1/4 of NW 1/4																
		7	NW 1/4 of NW 1/4																
		8	SW 1/4 of NW 1/4																
		9	SE 1/4 of NW 1/4																
State of Minnesota		10	Let 7																
		11	NE 1/4 of SW 1/4																
		12	NW 1/4 of SW 1/4																
State of Minnesota		13	SW 1/4 of SW 1/4																
		14	SE 1/4 of SW 1/4																
		15																	
		16	NE 1/4 of SE 1/4																
		17	NW 1/4 of SE 1/4																
		18	SW 1/4 of SE 1/4																
		19	SE 1/4 of SE 1/4																
		20																	

SOLD FOR TAXES	VALUATIONS BY SCHOOL DISTRICTS AS EQUALIZED BY DEPARTMENT OF TAXATION						Tax including State Homestead Mills	State Tax on Non-Homestead Mills	SPECIAL TAXES \$ cts.	TOTAL TAXES \$ cts.	PAID	WHEN PAID Month Day Year	Number of Receipt	March Settlement 1948 \$ cts.	June Settlement 1948 \$ cts.	Penalty \$ cts.	November Settlement 1948 \$ cts.	Penalty \$ cts.	Collections to First Monday in January 1949 \$ cts.	Penalty \$ cts.	Delinquent on First Monday in January 1949 \$ cts.	Total Delinquent Tax and Penalty \$ cts.	REMARKS
	District No.	District No.	District No.	District No.	District No.	District No.																	
	Rate	Rate	Rate	Rate	Rate	Rate																	
	Mills	Mills	Mills	Mills	Mills	Mills																	
1										1													
2										2													
3										3													
4										4													
5										5													
6										6													
7										7													
8										8													
9										9													
10										10													
11										11													
12										12													
13										13													
14										14													
15										15													
16										16													
17										17													
18										18													
19										19													
20										20													

145-29
148-30
144-27
144-28
144-29
144-30
145-26
145-27

Assessment Roll and Tax List of Real Property in the Town ofUnary #5

FORM 4 CD MILLER-DAY COMPANY, MINNEAPOLIS

144-26

IN WHOSE NAME ASSESSED	TO WHOM TRANSFERRED	DESCRIPTION OF PROPERTY				TRUE AND FULL VALUATIONS					ASSESSED VALUATIONS					FINAL EQUALIZED VALUE Dollars		
		SUBDIVISION	Sec. or Lot	Town or Block	Rng.	Number of Acres of Land	LAND Exclusive of Structures and Improvements	BUILDINGS and Other Structures	MACHINERY Permanently Attached to Real Estate	TOTAL True and Full Value	RURAL		ALL OTHER		MACHINERY Permanently Attached to Real Estate		TOTAL ASSESSED VALUE	Total Assessed Value as Equalized by the Board of Review
											Acres	100ths	Homestead Up to \$4,000 20%	Over \$4,000 and Non-Homestead 33 1/3%				
		1 NE 1/4 of NE 1/4	15	144	26													
		2 NW 1/4 of NE 1/4																
		3 SW 1/4 of NE 1/4																
		4 SE 1/4 of NE 1/4																
		5																
		6 NE 1/4 of NW 1/4																
		7 NW 1/4 of NW 1/4																
		8 SW 1/4 of NW 1/4																
		9 SE 1/4 of NW 1/4																
		10																
		11 NE 1/4 of SW 1/4																
		12 NW 1/4 of SW 1/4																
		13 SW 1/4 of SW 1/4																
		14 SE 1/4 of SW 1/4																
		15																
		16 NE 1/4 of SE 1/4																
		17 NW 1/4 of SE 1/4																
		18 SW 1/4 of SE 1/4																
		19 SE 1/4 of SE 1/4																
		20																

State of Minnesota

State of Minnesota

Cass County, Minnesota, for Taxes for the Year 1947.

SOLD FOR TAXES	VALUATIONS BY SCHOOL DISTRICTS AS EQUALIZED BY DEPARTMENT OF TAXATION						Tax Including State Homestead	State Tax on Non-Homestead	SPECIAL TAXES	TOTAL TAXES	PAID	WHEN PAID	Number of Receipt	March Settlement 1948	June Settlement 1948	Penalty	November Settlement 1948	Penalty	Collections to First Monday in January 1949	Penalty	Delinquent on First Monday in January 1949	Total Delinquent Tax and Penalty	REMARKS	
	District No.	District No.	District No.	District No.	District No.	District No.																		
	Rate	Rate	Rate	Rate	Rate	Rate																		
1																								
2																								
3																								
4																								
5																								
6																								
7																								
8																								
9																								
10																								
11																								
12																								
13																								
14																								
15																								
16																								
17																								
18																								
19																								
20																								

144-27 144-28 144-29 144-30 145-26 145-27 145-28

Assessment Roll and Tax List of Real Property in the Town of Unorg. # 5

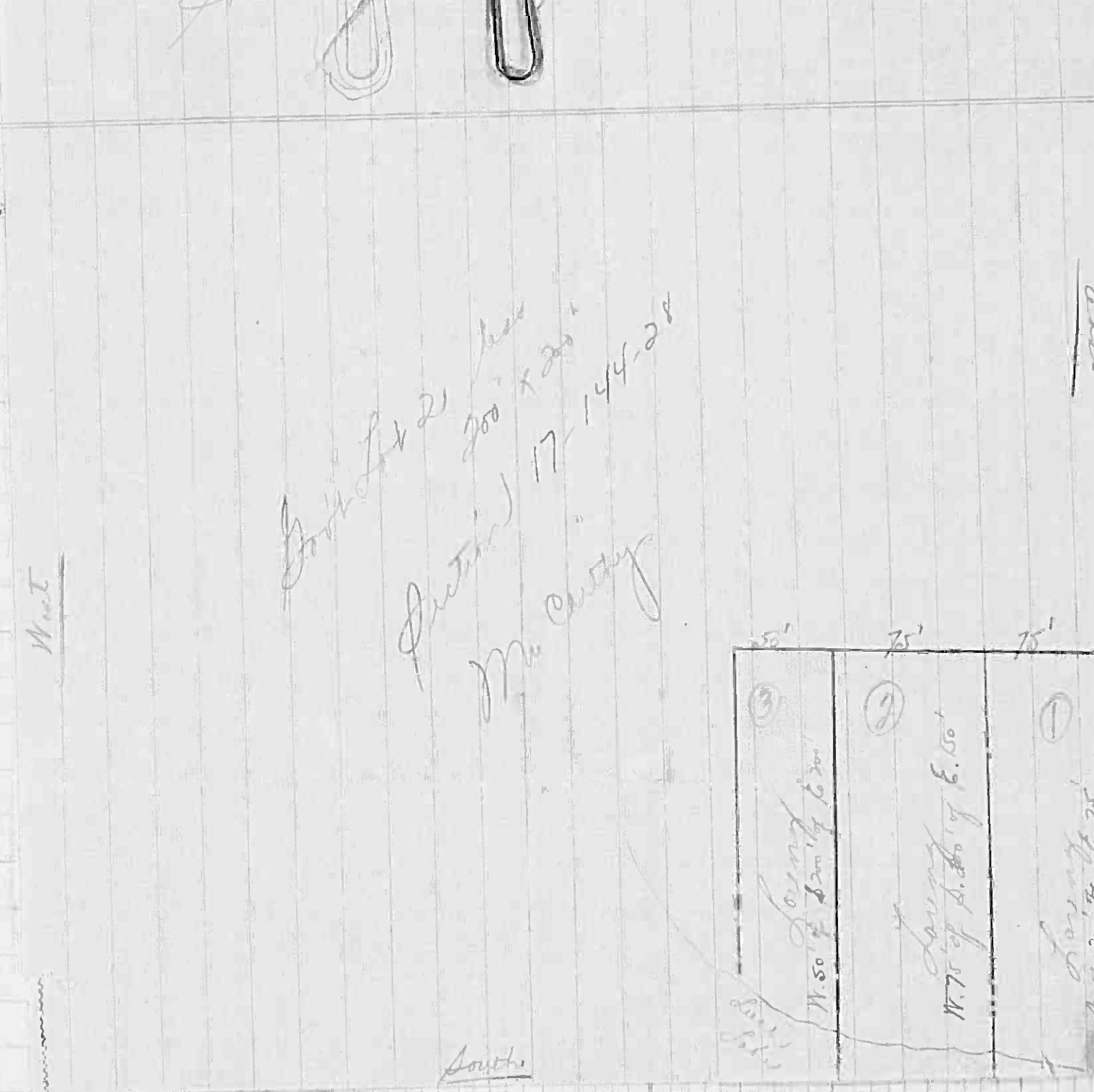
Cass County, Minnesota, for Taxes for the Year 1947.

Table with columns: IN WHOSE NAME ASSESSED, TO WHOM TRANSFERRED, DESCRIPTION OF PROPERTY, TRUE AND FULL VALUATIONS, ASSESSED VALUATIONS, VALUATIONS BY SCHOOL DISTRICTS, TAX INCLUDING STATE, SPECIAL TAXES, TOTAL TAXES, PAID, WHEN PAID, etc. Includes entries for Grace Godfrey, Frank Godfrey, and U.S. of America.

Assessment Roll and Tax List of Re

Cass County, Minnesota, for Taxes for the Year 1947.

IN WHOSE NAME ASSESSED	TO WHOM TRANSFERRED	DESCRIPTION OF PROPERTY	Sec. or Lot	Town or Block
Walter Oscar Erkkonen & Sally G Erkkonen		W. 50' of S. 200' of E. 200' of NE 1/4 of NE 1/4 of Lot 2	17	144
"	"	W. 75' of S. 200' of E. 150' of NW 1/4 of NE 1/4 of Lot 2		
"	"	S. 200' of E. 75' of Lot 2 SW 1/4 of NE 1/4		
John D. & K. E. McCarthy	E. L. Fairbanks	Lot 2, less S. 200' of E. 200'	5	NE 1/4 of NE 1/4
"	"	7.68 ac. of Lot 2	6	NE 1/4 of NW 1/4 SE 1/4 of NE 1/4
Russell Lego	"	SW 1/4 of NW 1/4	7	SW 1/4 of NW 1/4
		SE 1/4 of NW 1/4	9	SE 1/4 of NW 1/4
		NE 1/4 of SW 1/4	11	NE 1/4 of SW 1/4
		NW 1/4 of SW 1/4	12	NW 1/4 of SW 1/4
		SW 1/4 of SW 1/4	13	SW 1/4 of SW 1/4
		SE 1/4 of SW 1/4	14	SE 1/4 of SW 1/4
		NE 1/4 of SE 1/4	16	NE 1/4 of SE 1/4
		NW 1/4 of SE 1/4	17	NW 1/4 of SE 1/4
		SW 1/4 of SE 1/4	18	SW 1/4 of SE 1/4
		SE 1/4 of SE 1/4	19	SE 1/4 of SE 1/4



SOLD FOR TAXES	VALUATIONS BY SCHOOL DISTRICTS AS EQUALIZED BY DEPARTMENT OF TAXATION						Tax including State Homestead	State Tax on Non-Homestead	SPECIAL TAXES	TOTAL TAXES	PAID	WHEN PAID	Number of Receipt	March Settlement 1948	June Settlement 1948	Penalty	November Settlement 1948	Penalty	Collections to First Monday in January 1949	Penalty	Delinquent on First Monday in January 1949	Total Delinquent Tax and Penalty	REMARKS
	District No. 1	District No. 2	District No. 3	District No. 4	District No. 5	District No. 6																	
1	241						4172		4172	1	PAID IN FULL	MAY 14 1948											
2	119						2060	48	2108	2	PAID IN FULL	MAY 14 1948	517										
3	19						328	08	336	3	PAID IN FULL	MAY 14 1948											
4	675	205					11686	274	18078	4	2nd Half Paid	OCT 11 1948	1203										
SOLD FOR TAXES	57						986	24	1010	5	1st Half Paid	JUN 24 1948	889										
6 SOLD FOR TAXES	57						986	24	1010	6													
7 SOLD FOR TAXES	65						1126	26	1152	7													
8										8													
9										9													
10										10													
11										11													
12										12													
13										13													
14										14													
15										15													
16										16													
17										17													
18										18													
19										19													
20										20													

12590

H 241 205
 NW 792 756
 1253-961=2194
 18078 308
 21344 404
 39422 712
 40134

144-26
 144-27
 144-28
 145-29
 146-29
 147-29
 148-29
 149-29
 150-29
 151-29
 152-29
 153-29
 154-29
 155-29
 156-29
 157-29
 158-29
 159-29
 160-29

IN WHOSE NAME ASSESSED	TO WHOM TRANSFERRED	DESCRIPTION OF PROPERTY	TRUE AND FULL VALUATIONS										FINAL EQUALIZED VALUE	SOLD FOR TAXES	VALUATIONS BY SCHOOL DISTRICTS AS EQUALIZED BY DEPARTMENT OF TAXATION						Tax Including State Homestead	State Tax on Non-Homestead	SPECIAL TAXES	TOTAL TAXES	PAID	WHEN PAID	Number of Receipt	March Settlement 1948	June Settlement 1948	Penalty 1948	November Settlement 1948	Penalty 1948	Collections to First Monday in January 1949	Penalty 1949	Delinquent on First Monday in January 1949	Total Delinquent Tax and Penalty	REMARKS	
			LAND Exclusive of Structures and Improvements	BUILDINGS and Other Structures	MACHINERY Permanently Attached to Real Estate	TOTAL True and Full Value	R U R A L		ALL OTHER		MACHINERY Permanently Attached to Real Estate	TOTAL ASSESSED VALUE			Total Assessed Value as Equalized by the Board of Review	District No.	District No.	District No.	District No.	District No.																		
							Homestead Up to \$4,000 20%	Over \$4,000 and Non-Homestead 33 1/3%	Homestead Up to \$4,000 25%	Over \$4,000 and Non-Homestead 40%																												Rate
W. S. Marcup		1 NE 1/4 of NE 1/4 Lot 2				18 144 28	2250															1.73 Mills	520	12	532	1 PAID IN FULL	JUN 16 1948	1890							582			
State of Minnesota		2 NW 1/4 of NE 1/4 7/2 of SE 1/4 or Lot 3				20 144 28																																
C. L. Culp		3 SW 1/4 of NE 1/4					47																						4 PAID IN FULL	JUN 10 1948	1388							
Russell + Grace Lego		4 SE 1/4 of NE 1/4 " 4					40																55	22	974													974
State of Minnesota		6 SE 1/4 of NW 1/4			21 144 28	40																	206	84	3650													3650
M. S. Marwin		7 NE 1/4 of NW 1/4					40																	24	1028	1st Half Paid	MAY 26 1948	60							514	565		
State of Minnesota		8 SW 1/4 of NW 1/4					40																	24	1028	1st Half Paid	MAY 26 1948								514	565		
Russell + Grace Lego		9 SW 1/4 of NE 1/4																					367	150	6504													6504
State of Minnesota		10 NE 1/4 of SE 1/4 of NE 1/4				22 144 28																																
State of Minnesota		11 NW 1/4 of NW 1/4																																				
State of Minnesota		12 SW 1/4 of SW 1/4																																				
State of Minnesota		13 NE 1/4 of SW 1/4																																				
State of Minnesota		14 NW 1/4 of SW 1/4																																				
State of Minnesota		15 SE 1/4 of SW 1/4																																				
State of Minnesota		16 NW 1/4 of SE 1/4 less R.R. & W. & C.				36 59																																
State of Minnesota		17 NE 1/4 of SE 1/4 of NE 1/4				22 144 28																																
State of Minnesota		18 NW 1/4 of NW 1/4																																				
State of Minnesota		19 SW 1/4 of NW 1/4																																				
State of Minnesota		20 SE 1/4 of NW 1/4																																				
State of Minnesota		21 NW 1/4 of SE 1/4				26 09																																

144-26, 144-27, 144-28, 145-26, 145-27, 145-28, 145-29, 146-29, 147-29, 148-29, 149-29, 150-29

Assessment Roll and Tax List of Real Property in the

Town of Unang #5

Cass County, Minnesota, for Taxes for the Year 1947.

IN WHOSE NAME ASSESSED	TO WHOM TRANSFERRED	DESCRIPTION OF PROPERTY						TRUE AND FULL VALUATIONS					ASSESSED VALUATIONS					FINAL EQUALIZED VALUE	SOLD FOR TAXES	VALUATIONS BY SCHOOL DISTRICTS AS EQUALIZED BY DEPARTMENT OF TAXATION						Tax including State Homestead	State Tax on Non-Homestead	SPECIAL TAXES	TOTAL TAXES	PAID	WHEN PAID	Number of Receipt	March Settlement 1948	June Settlement 1948	Penalty	November Settlement 1948	Penalty	Collections to First Monday in January 1949	Penalty	Delinquent on First Monday in January 1949	Total Delinquent Tax and Penalty	REMARKS		
		SUBDIVISION	Sec. or Lot	Town or Block	Rag	Number of Acres of Land	No. School District	Ind. rate Homestead or No	Ind. rate Ad. prop. or No	LAND Exclusive of Structures and Improvements	BUILDINGS and Other Structures	MACHINERY Permanently Attached to Real Estate	TOTAL True and Full Value	RURAL		ALL OTHER				MACHINERY Permanently Attached to Real Estate	TOTAL ASSESSED VALUE	Total Assessed Value as Equalized by the Board of Review	District No.	District No.	District No.																		District No.	District No.
														Homestead Up to \$4,000 20%	Over \$4,000 and Non-Homestead 33 1/4 %	Homestead Up to \$4,000 25%	Over \$4,000 and Non-Homestead 40%																											
Andrew J. Giffen		1 NE 1/4 of NE 1/4 Sec 28 T144 R28			3771	44													55					952	22			974	1					974	1071									
"		2 NW 1/4 of NE 1/4 " "			3915														58					1004	24			1028	2					1028	1131									
"		3 SW 1/4 of NE 1/4																																										
"		4 SE 1/4 of NE 1/4																																										
"		6 NE 1/4 of NW 1/4			40															44					762	18			780	6					780									
"		7 NW 1/4 of NW 1/4			40															44					762	18			780	7					780									
"		8 SW 1/4 of NW 1/4																																										
"		9 SE 1/4 of NW 1/4																																										
"		11 NE 1/4 of SW 1/4																																										
"		12 NW 1/4 of SW 1/4																																										
State of Minnesota		13 SW 1/4 of SW 1/4 } Lot 7		29	144	28																																						
"		14 SE 1/4 of SW 1/4 }																																										
State of Minnesota		16 NE 1/4 of SE 1/4 } Lot 2		31	144	28																																						
"		17 NW 1/4 of SE 1/4 }																																										
"		18 SW 1/4 of SE 1/4																																										
"		19 SE 1/4 of SE 1/4																																										
"		20																																										
				15 486																				3480		87		3567																

144-27 144-26 144-28

145-29 145-27 145-26 145-25 144-30 144-29 144-28 145-28 145-27 145-26 145-25

IN WHOSE NAME ASSESSED		TO WHOM TRANSFERRED				DESCRIPTION OF PROPERTY		TRUE AND FULL VALUATIONS					ASSESSED VALUATIONS					FINAL EQUALIZED VALUE	SOLD FOR TAXES	VALUATIONS BY SCHOOL DISTRICTS AS EQUALIZED BY DEPARTMENT OF TAXATION						Tax Including State Homestead Mills	State Tax on Non-Homestead Mills	SPECIAL TAXES	TOTAL TAXES	PAID	WHEN PAID	Number of Receipt	March Settlement 1948	June Settlement 1948	Penalty	November Settlement 1948	Penalty	Collections to First Monday in January 1949	Penalty	Delinquent on First Monday in January 1949	Total Delinquent Tax and Penalty	REMARKS															
Acres	100ths	Subdivision	Sec. of Lot	Town or Block	Rpt.	No. of Acres of Land	LAND Exclusive of Structures and Improvements	BUILDINGS and Other Structures	MACHINERY Permanently Attached to Real Estate	TOTAL True and Full Value	RURAL Homestead Up to \$4,000 20%	Over \$4,000 and Non-Homestead 33 1/4 %	ALL OTHER Homestead Up to \$4,000 25%	Over \$4,000 and Non-Homestead 40%	MACHINERY Permanently Attached to Real Estate 33 1/4 %	TOTAL ASSESSED VALUE	Total Assessed Value as Equalized by the Board of Review	Dollars		Dollars	Dollars	Dollars	Dollars	Dollars	Dollars																		Dollars	Dollars	Dollars	Dollars	Dollars	Dollars	Dollars	Dollars	Dollars	Dollars	Dollars	Dollars	Dollars		
								Dollars	Dollars	Dollars	Dollars	Dollars	Dollars	Dollars	Dollars	Dollars	Dollars	Dollars		\$	cts.	\$	cts.	\$	cts.																		\$	cts.	\$	cts.	\$	cts.	\$	cts.	\$	cts.	\$	cts.	\$	cts.	\$
State of Minnesota						1	NE 1/4 of NE 1/4																																																		
State of Minnesota						2	NW 1/4 of NE 1/4																																																		
State of Minnesota						3	SW 1/4 of NE 1/4																																																		
Russell Lego	State of Minnesota					4	SE 1/4 of NE 1/4																																																		
						5	N 1/2 of NE 1/4 of NW 1/4 less Plat of Lakeview Resort				780																																					496 of 546									
						6	NE 1/4 of NW 1/4																																																		
John Leadle	State of Minnesota					7	NW 1/4 of NW 1/4				40																																														
						8	SW 1/4 of NW 1/4																																																		
						9	SE 1/4 of NW 1/4																																																		
						10																																																			
John Leadle						11	NE 1/4 of SW 1/4																																																		
						12	NW 1/4 of SW 1/4				40																																														
						13	SW 1/4 of SW 1/4																																																		
						14	SE 1/4 of SW 1/4																																																		
						15																																																			
						16	NE 1/4 of SE 1/4																																																		
State of Minnesota						17	NW 1/4 of SE 1/4																																																		
						18	SW 1/4 of SE 1/4																																																		
						19	SE 1/4 of SE 1/4																																																		
						20																																																			

87.50

146

2008

48

2056

Assessment Roll and Tax List of Real Property in the town of Unary #5

Cass County, Minnesota, for Taxes for the Year 1947.

144-27
144-28

IN WHOSE NAME ASSESSED	TO WHOM TRANSFERRED	DESCRIPTION OF PROPERTY						TRUE AND FULL VALUATIONS							ASSESSED VALUATIONS					FINAL EQUALIZED VALUE Dollars
		SUBDIVISION	Sec. or Lot	Town or Block	Rhs.	Number of Acres of Land		LAND Exclusive of Structures and Improvements Dollars	BUILDINGS and Other Structures Dollars	MACHINERY Permanently Attached to Real Estate Dollars	TOTAL True and Full Value Dollars	RURAL		ALL OTHER		MACHINERY Permanently Attached to Real Estate 33 1/4 % Dollars	TOTAL ASSESSED VALUE Dollars	Total Assessed Value as Equalized by the Board of Review Dollars		
Acres	100ths					Homestead Up to \$4,000 20%	Over \$4,000 and Non-Homestead 33 1/4 % Dollars					Homestead Up to \$1,000 25%	Over \$1,000 and Non-Homestead 40% Dollars							
		1 NE 1/4 of NE 1/4					33	144	28											
		2 NW 1/4 of NE 1/4																		
		3 SW 1/4 of NE 1/4																		
		4 SE 1/4 of NE 1/4																		
		5																		
		6 NE 1/4 of NW 1/4																		
		7 NW 1/4 of NW 1/4																		
		8 SW 1/4 of NW 1/4																		
State of Minnesota		9 SE 1/4 of NW 1/4 Let 5																		
		10																		
		11 NE 1/4 of SW 1/4																		
		12 NW 1/4 of SW 1/4																		
		13 SW 1/4 of SW 1/4																		
		14 SE 1/4 of SW 1/4																		
		15																		
		16 NE 1/4 of SE 1/4																		
Frank W. + Bernice G. Putnam		17 NW 1/4 of SE 1/4 Let 6							38	65										
		18 SW 1/4 of SE 1/4							40											
		19 SE 1/4 of SE 1/4																		
		20								78	65									

SOLD FOR TAXES	VALUATIONS BY SCHOOL DISTRICTS AS EQUALIZED BY DEPARTMENT OF TAXATION						Tax including State Homestead Mills	State Tax on Non-Homestead \$ cts. 4.27 Mills	SPECIAL TAXES \$ cts.	TOTAL TAXES \$ cts.	PAID	WHEN PAID Month Day Year	Number of Receipt	March Settlement 1948 \$ cts.	June Settlement 1948 \$ cts.	Penalty \$ cts.	November Settlement 1948 \$ cts.	Penalty \$ cts.	Collections to First Monday in January 1949 \$ cts.	Penalty \$ cts.	Delinquent on First Monday in January 1949 \$ cts.	Total Delinquent Tax and Penalty \$ cts.	REMARKS
	District No. Rate	District No. Rate	District No. Rate	District No. Rate	District No. Rate																		
	Dollars	Dollars	Dollars	Dollars	Dollars																		

145-29
 146-27
 146-29
 144-29
 145-29
 144-30
 145-28
 145-27

PAID IN FULL JUN 11 1947 }
 PAID IN FULL JUN 11 1948 } 760 v
 1808
 1966 42 1808

Form 4 CD

IN WHOSE NAME ASSESSED	TO WHOM TRANSFERRED	DESCRIPTION OF PROPERTY					TRUE AND FULL VALUATIONS				ASSESSED VALUATIONS				FINAL EQUALIZED VALUE	SOLD FOR TAXES	VALUATIONS BY SCHOOL DISTRICTS AS EQUALIZED BY DEPARTMENT OF TAXATION						Taxes including State Homestead	State Tax on Non-Homestead	SPECIAL TAXES	TOTAL TAXES	PAID	WHEN PAID	Number of Receipt	March Settlement 1948	June Settlement 1948	Penalty	November Settlement 1948	Penalty	Collections to First Monday in January 1949	Penalty	Delinquent on First Monday in January 1949	Total Delinquent Tax and Penalty	REMARKS												
		SUBDIVISION	Sec. or Lot	Town of Block	Rng.	Number of Acres of Land	LAND Exclusive of Structures and Improvements	BUILDINGS and Other Structures	MACHINERY Permanently Attached to Real Estate	TOTAL True and Full Value	RURAL Homestead Up to \$4,000 20%	RURAL Over \$4,000 and Non-Homestead 33 1/4%	ALL OTHER Homestead Up to \$4,000 25%	ALL OTHER Over \$4,000 and Non-Homestead 40%			MACHINERY Permanently Attached to Real Estate 33 1/4%	TOTAL ASSESSED VALUE	Total Assessed Value as Equalized by the Board of Review	District No. Rate	District No. Rate	District No. Rate																		District No. Rate	District No. Rate	District No. Rate	District No. Rate	Mills	Mills	Mills	Mills	Mills	Mills	cts.	cts.
State of Minnesota		1	NE 1/4 of NE 1/4			34	144	28																																											
State of Minnesota		2	NW 1/4 of NE 1/4																																																
		3	SW 1/4 of NE 1/4	Let 2																																															
		4	SE 1/4 of NE 1/4																																																
		5																																																	
State of Minnesota		6	NE 1/4 of NW 1/4	Let 3 less Ry R+City																																															
		7	NW 1/4 of NW 1/4																																																
		8	SW 1/4 of NW 1/4																																																
		9	SE 1/4 of NW 1/4																																																
		10																																																	
		11	NE 1/4 of SW 1/4																																																
		12	NW 1/4 of SW 1/4																																																
		13	SW 1/4 of SW 1/4																																																
		14	SE 1/4 of SW 1/4																																																
		15																																																	
		16	NE 1/4 of SE 1/4																																																
		17	NW 1/4 of SE 1/4																																																
		18	SW 1/4 of SE 1/4																																																
		19	SE 1/4 of SE 1/4																																																
		20																																																	

144-26
144-27
144-28

145-26
145-27
146-29
144-29
145-26
145-27

Assessment Roll and Tax List of Real Property in the Town of Unary #5

Form 4 CD

IN WHOSE NAME ASSESSED	TO WHOM TRANSFERRED	DESCRIPTION OF PROPERTY					TRUE AND FULL VALUATIONS							ASSESSED VALUATIONS					FINAL EQUALIZED VALUE	
		SUBDIVISION	Sec. of Lot	Town or Block	Reg.	Number of Acres of Land	LAND Exclusion of Structures and Improvements	BUILDINGS and Other Structures	MACHINERY Permanently Attached to Real Estate	TOTAL True and Full Value	R U R A L		ALL OTHER			MACHINERY Permanently Attached to Real Estate	TOTAL ASSESSED VALUE	Total Assessed Value as Equalized by the Board of Review		
											Acres	100ths	Homestead Up to \$1,000 20%	Over \$4,000 and Non-Homestead 33 1/4 %	Homestead Up to \$4,000 25%					Over \$4,000 and Non-Homestead 40%
	State of Minnesota	1	NE 1/4 of SE 1/4	21	144	29														
	State of Minnesota	2	NW 1/4 of SE 1/4																	
	State of Minnesota	3	NW 1/4 of NE 1/4	22	144	29														
		4	SW 1/4 of NE 1/4																	
		5																		
		6	NE 1/4 of NW 1/4																	
		7	NW 1/4 of NW 1/4																	
		8	SW 1/4 of NW 1/4																	
		9	SE 1/4 of NW 1/4																	
		10																		
	State of Minnesota	11	NE 1/4 of SW 1/4																	
	State of Minnesota	12	NW 1/4 of SW 1/4																	
	State of Minnesota	13	SW 1/4 of SW 1/4																	
	State of Minnesota	14	SE 1/4 of SW 1/4																	
		15																		
	State of Minnesota	16	NE 1/4 of SE 1/4																	
	State of Minnesota	17	NW 1/4 of SE 1/4																	
		18	SW 1/4 of SE 1/4																	
		19	SE 1/4 of SE 1/4																	
	W. S. Mascip	20	Lot 1	24	144	29	60	48												

Cass County, Minnesota, for Taxes for the Year 1947.

SOLD FOR TAXES	VALUATIONS BY SCHOOL DISTRICTS AS EQUALIZED BY DEPARTMENT OF TAXATION						Tax including State Homestead	State Tax on Non-Homestead	SPECIAL TAXES	TOTAL TAXES	PAID	WHEN PAID	Number of Receipt	March Settlement 1948	June Settlement 1948	Penalty	November Settlement 1948	Collections to First Monday in January 1949	Penalty	Delinquent on First Monday in January 1949	Total Delinquent Tax and Penalty	REMARKS	
	District No.	District No.	District No.	District No.	District No.	District No.																	
	Rate	Rate	Rate	Rate	Rate	Rate																	

Handwritten notes: #1 24 44

Handwritten notes: 762 18 780

Handwritten notes: 20 PAID IN FULL JUN 16 1948 780

144-27 144-28 144-29

145-28 145-27 145-26 145-25 145-24 145-23 145-22 145-21 145-20 145-19 145-18 145-17 145-16 145-15 145-14 145-13 145-12 145-11 145-10 145-9 145-8 145-7 145-6 145-5 145-4 145-3 145-2 145-1

Assessment Roll and Tax List of Real Property in the Town of Unwag. #5

IN WHOSE NAME ASSESSED	TO WHOM TRANSFERRED	DESCRIPTION OF PROPERTY				TRUE AND FULL VALUATIONS				ASSESSED VALUATIONS					FINAL EQUALIZED VALUE	
		SUBDIVISION	Sec. of Lot	Town or Block	Rng.	Number of Acres of Land	LAND Exclusive of Structures and Improvements	BUILDINGS and Other Structures	MACHINERY Permanently Attached to Real Estate	TOTAL True and Full Value	RURAL		ALL OTHER			MACHINERY Permanently Attached to Real Estate
Acres	100ths										Homestead Up to \$4,000 20%	Over \$4,000 and Non-Homestead 33 1/3%	Homestead Up to \$4,000 25%	Over \$4,000 and Non-Homestead 40%	Dollars	
W. S. Mascip Gus Kullander		NE 1/4 of NE 1/4	27	144	29	4325	2m									
"		NW 1/4 of NW 1/4			40											
"		SW 1/4 of NW 1/4			40											
"		SE 1/4 of NE 1/4														
U. S. of America		NE 1/4 of NE 1/4	28	144	29											
U. S. of America		NW 1/4 of NE 1/4														
State of Minnesota		SW 1/4 of NW 1/4														
State of Minnesota		SE 1/4 of NE 1/4														
W. S. Mascip		Lat 1			27											
U. S. of America	State of Minn.	NE 1/4 of SW 1/4														
		NW 1/4 of SW 1/4														
		SW 1/4 of SW 1/4														
		SE 1/4 of SW 1/4														
U. S. of America	State of Minn.	NE 1/4 of SE 1/4														
		NW 1/4 of SE 1/4														
W. S. Mascip		SW 1/4 of SE 1/4			40											
		SE 1/4 of SE 1/4														

Cass County, Minnesota, for Taxes for the Year 1947.

SOLD FOR TAXES	VALUATIONS BY SCHOOL DISTRICTS AS EQUALIZED BY DEPARTMENT OF TAXATION						Tax including State Homestead	State Tax on Non-Homestead	SPECIAL TAXES	TOTAL TAXES	PAID	WHEN PAID	Number of Receipt	March Settlement 1948	June Settlement 1948	Penalty	November Settlement 1948	Penalty	Collections to First Monday in January 1949	Penalty	Delinquent on First Monday in January 1949	Total Delinquent Tax and Penalty	REMARKS		
	District No.	District No.	District No.	District No.	District No.	District No.																			
	Rate	Rate	Rate	Rate	Rate	Rate																			
1	72						12 46	30	12 76		PAID IN FULL	JUN 16 1948	7890												
SOLD FOR TAXES	44						7 62	18	7 80																
SOLD FOR TAXES	44						7 62	18	7 80																
4																									
5																									
6																									
7																									
8																									
9																									
10	18						3 12	08	3 20		PAID IN FULL	JUN 16 1948	7890												
11																									
12																									
13																									
14																									
15																									
16																									
17																									
18	26						4 50	10	4 60		PAID IN FULL	JUN 16 1948	7890												
19																									
20																									

144-27 144-28 144-29 144-30 145-26 145-27

145-28 145-29 145-30 145-31 145-32 145-33 145-34 145-35 145-36 145-37 145-38

Form 4 CD - MINN. STAT. COMP. 50.01, 50.02, 50.03

IN WHOSE NAME ASSESSED	TO WHOM TRANSFERRED	DESCRIPTION OF PROPERTY		No. School District	Indicate Homestead Yes or No	Indicate Agricultural Yes or No	TRUE AND FULL VALUATIONS				ASSESSED VALUATIONS						FINAL EQUALIZED VALUE
		SUBDIVISION	Sec. or Lot				Town or Block	Number of Acres of Land	LAND Exclusive of Structures and Improvements	BUILDINGS and Other Structures	MACHINERY Permanently Attached to Real Estate	TOTAL True and Full Value	RURAL		ALL OTHER		
		Acres	100ths			Dollars	Dollars	Dollars	Dollars	Homestead Up to \$4,000 20%	Over \$4,000 and Non-Homestead 33 1/3%	Homestead Up to \$4,000 25%	Over \$4,000 and Non-Homestead 40%	Dollars	Dollars	Dollars	
State of Minnesota																	
State of Minnesota																	
State of Minnesota	(Cont. Melvin Mattler)																
State of Minnesota																	
State of Minnesota																	
State of Minnesota																	

SOLID FOR TAXES	VALUATIONS BY SCHOOL DISTRICTS AS EQUALIZED BY DEPARTMENT OF TAXATION					Tax Including State Homestead	State Tax on Non-Homestead	SPECIAL TAXES	TOTAL TAXES	PAID	WHEN PAID	Number of Receipt	March Settlement 1948	June Settlement 1948	Penalty	November Settlement 1948	Penalty	Collections to First Monday in January 1949	Penalty	Delinquent on First Monday in January 1949	Total Delinquent Tax and Penalty	REMARKS
	District No.	District No.	District No.	District No.	District No.																	

144-26
144-27
144-28
144-29
145-26
145-27

144-26
144-27
144-28
144-29
145-26
145-27

Form 4-CB 8-14-45 STATE OF MINN.

IN WHOSE NAME ASSESSED	TO WHOM TRANSFERRED	SUBDIVISION	Sec. of Lot	Town or Block	Rng.	Number of Acres of Land	No. School District	Indicate Homestead Yes or No	Indicate Agricultural Yes or No	TRUE AND FULL VALUATIONS				ASSESSED VALUATIONS					FINAL EQUALIZED VALUE
										LAND Exclusive of Structures and Improvements	BUILDINGS and Other Structures	MACHINERY Permanently Attached to Real Estate	TOTAL True and Full Value	R U R A L		ALL OTHER		MACHINERY Permanently Attached to Real Estate	
						Acres			Dollars	Dollars	Dollars	Dollars	Dollars	Dollars	Dollars	Dollars	Dollars	Dollars	
		1 NE 1/4 of NE 1/4					40	Un											
		2 NW 1/4 of NE 1/4																	
		3 SW 1/4 of NE 1/4																	
J. B. Daniels		4 NE 1/4 of SW 1/4	18	145	28	40													
		5 Lot 3 less 350' x 250'				37.66													
Clarence C. + Carole C. Eichmeyer		350' x 250' of Lot 3				2.00													
Ernest Flemming		6 NW 1/4 of NW 1/4	19	145	28	40.20													
		7 NW 1/4 of NW 1/4 Lot 1				40.20													
		8 SW 1/4 of NW 1/4 - 2				40.04													
		9 SE 1/4 of NW 1/4																	
		10																	
		11 NE 1/4 of SW 1/4																	
Ernest Flemming		12 NW 1/4 of SW 1/4																	
		13 SW 1/4 of SW 1/4 - 4				39.72													
		14 SE 1/4 of SW 1/4																	
		15																	
		16 NE 1/4 of SE 1/4																	
		17 NW 1/4 of SE 1/4																	
		18 SW 1/4 of SE 1/4																	
		19 SE 1/4 of SE 1/4																	
		20																	

SOLD FOR TAXES	VALUATIONS BY SCHOOL DISTRICTS AS EQUALIZED BY DEPARTMENT OF TAXATION						Tax including State Homestead	State Tax on Non-Homestead	SPECIAL TAXES	TOTAL TAXES	PAID	WHEN PAID	Number of Receipts	March Settlement 1948	June Settlement 1948	Penalty	November Settlement 1948	Penalty	Collections to First Monday in January 1949	Penalty	Delinquent on First Monday in January 1949	Total Delinquent Tax and Penalty	REMARKS
	No. District	No. District	No. District	No. District	No. District	No. District																	

144-26
144-27
144-28
144-29
144-30
145-26
145-27
145-28
145-29
145-30
Portage Lake
FENNELL

IN WHOSE NAME ASSESSED	TO WHOM TRANSFERRED	DESCRIPTION OF PROPERTY				TRUE AND FULL VALUATIONS								ASSESSED VALUATIONS					FINAL EQUALIZED VALUE	SOLD FOR TAXES	VALUATIONS BY SCHOOL DISTRICTS AS EQUALIZED BY DEPARTMENT OF TAXATION						Tax Including State Homestead	State Tax on Non-Homestead	SPECIAL TAXES	TOTAL TAXES	PAID	WHEN PAID	Number of Receipt	March Settlement 1948	June Settlement 1948	Penalty	November Settlement 1948	Penalty	Collections to First Monday in January 1949	Penalty	Delinquent on First Monday in January 1949	Total Delinquent Tax and Penalty	REMARKS		
		Subdivision	Sec or Lot	Town or Block	Rng.	Number of Acres of Land	LAND Exclusion of Structures and Improvements	BUILDINGS and Other Structures	MACHINERY Permanently Attached to Real Estate	TOTAL True and Full Value	RURAL		ALL OTHER		MACHINERY Permanently Attached to Real Estate	TOTAL ASSESSED VALUE	Total Assessed Value as Equalized by the Board of Review	District No.			District Rate	District No.	District Rate	District No.	District Rate																				
											Homestead Up to \$4,000 20%	Over \$4,000 and Non-Homestead 33 1/3%	Homestead Up to \$4,000 25%	Over \$4,000 and Non-Homestead 40%																															
Wilford D + Selma Montcalme		less part s. of s. n. Ry	29	145	28	37	20	47								1	7.2 Mills							4458	56	4514	PAID IN FULL	MAY 27 1948	5477		4514														
Lloyd Dorman		All that part of NW 1/4 of NW 1/4 of S. N. Ry							2	80						2	4	15						260		260	1st Half Paid	MAY 20 1948																	
Lloyd Dorman		SW 1/4 of NE 1/4														3																													
Ernest Flemming		SE 1/4 of NE 1/4 Lot 2 less 7/2 acs	30						31	72						5	11	68					20220	476	20696	2nd Half Paid	OCT 30 1948	13510		10348		10348													
Richard Land Improvement Co.		NE 1/4 of NW 1/4 NE 1/4 NE 1/4	30						40							7	13																											W.S.B added 1-19-50	
Ernest Flemming		SE 1/4 of NW 1/4 Lot 1 less Rt + WY							36	58						10	38						658	16	674	2nd Half Paid	OCT 30 1948	3510		337		337													
Ernest Flemming		6.30 acs of Lot 3							15	35						16	65						952	22	974	2nd Half Paid	OCT 30 1948	13510		487		487													
U. S. of America		NW 1/4 of SE 1/4														17																													
U. S. of America		SE 1/4 of SE 1/4														18																													
																19																													
																20																													
																							4458	56																					
																							22090	514																					
																							26648	570																					

144-27 144-28 144-29 144-30 145-26 145-27 145-28

145-29 145-30 146-27 146-29

Portage Lake

Assessment Roll and Tax List of Real Property in the Town of Umang #5

Form 4-CD

Table with columns for Description of Property, True and Full Valuations, Assessed Valuations, Valuations by School Districts, Total Taxes, Paid, When Paid, Number of Receipt, and Remarks. Includes handwritten entries like 'U.S. of America', 'State of Minnesota', 'Paul Gow', and 'Lata'.

Vertical text on the left margin: 144-27, 144-28, 144-29, 144-30, 145-26, 145-27, 145-28

Vertical text on the right margin: 145-29, 146-27, 146-29, Portage Lake

Assessment Roll and Tax List of Real Property in the Town of Umap #5

Cass County, Minnesota, for Taxes for the Year 1947.

IN WHOSE NAME ASSESSED	TO WHOM TRANSFERRED	SUBDIVISION	TRUE AND FULL VALUATIONS				ASSESSED VALUATIONS					FINAL EQUALIZED VALUE
			LAND Exclusive of Structures and Improvements	BUILDINGS and Other Structures	MACHINERY Permanently Attached to Real Estate	TOTAL True and Full Value	RURAL	ALL OTHER	MACHINERY Permanently Attached to Real Estate	TOTAL ASSESSED VALUE	Total Assessed Value as Equalized by the Board of Review	
Sec. or Lot	Town or Block	Number of Acres of Land	Improvements	Dollars	Dollars	Dollars	Dollars	Dollars	Dollars	Dollars	Dollars	Dollars
		Railroad Leases										
Bena Oil Co.	Bena	Lease # 34115				750						
		11,250 sq. ft.										
Art Majjala	Bena	Lease # 36670										
		10,800 sq. ft.										
Viggo M. Jensen Co.	Albert Lea	Lease 42873										
		10,800 sq. ft.										

VALUATIONS BY SCHOOL DISTRICTS AS EQUALIZED BY DEPARTMENT OF TAXATION							SOLD FOR TAXES	Tax including State Homestead	State Tax on Non-Homestead	SPECIAL TAXES	TOTAL TAXES	PAID	WHEN PAID	Number of Receipt	March Settlement 1948	June Settlement 1948	Penalty	November Settlement 1948	Penalty	Collections to First Monday in January 1949	Penalty	Delinquent on First Monday in January 1949	Total Delinquent Tax and Penalty	REMARKS	
District No.	District No.	District No.	District No.	District No.	District No.	District No.																			
Rate	Rate	Rate	Rate	Rate	Rate	Rate	Dollars	cts.	cts.	cts.	cts.	Month	Day	Year	\$	cts.	\$	cts.	\$	cts.	\$	cts.	\$	cts.	
1	250							4704	102		4806												4806		
2																									
3																									
4																									
5																									
6																									
7																									
8	30 Aud. Assess 11/27/48							576	08		384											384		384 added	
9																									
10	Prop 2051 2.00							4704	102		4806														
11																									
12																									
13																									
14	71 1043 3455 = 1498																								
15	77 8221 12984 = 21205																								
16	TOTAL 9264 16439 = 25703																								
17																									
18	Ague. Ua							160336	3286																
19	N.A. Ua							309250	5288																
20	71 250							469586	8574		478160														

144-27-141-26
145-28
146-27-145-28
147-27-146-28
148-27-147-28
149-27-148-28
150-27-149-28
151-27-150-28
152-27-151-28
153-27-152-28
154-27-153-28
155-27-154-28
156-27-155-28
157-27-156-28
158-27-157-28
159-27-158-28
160-27-159-28

PERMANENT