

ASSESSMENT & TAX LIST - 1962

Unorg. No. 4

SUMMARY OF TAX COLLECTION

Original Levy	-	-	-	-	-	\$ 16,123.46
Additions	-	-	-	-	-	\$ _____
Abate-ments	-	-	-	-	-	\$ 31.82
						\$ 16,091.64

COLLECTIONS

March Settlement	-	-	-	-	-	\$ 1486.99
June Settlement	-	-	-	-	-	\$ 8146.03
November Settlement	-	-	-	-	-	\$ 2618.81
January Settlement	-	-	-	-	-	\$ 609.30 \$ 12,811.13
Over Collected	-	-	-	-	-	\$ _____
Under Collected	-	-	-	-	-	\$ _____
Delinquent	-	-	-	-	-	\$ 3390.51
Total	-	-	-	-	-	\$ 16,091.64

Red Stone
142-25
142-29
143-30
Fairwood
Chippewa
Basswood
Shed: vision

Assessment Roll and Tax List of Real Property in the Town of Unorg #4

* Indicate Type of Property: R-Residential, C-Commercial, I-Industrial, U-Utility, F-Farm, L-Lakeshore, T-Timber, M-Mineral

Cass County, Minnesota, for Taxes for the Year 1962.

Table with columns for Property Description, Valuations (True and Full, Assessed), Taxes (School Districts, State, Special, Total), and Payment Status. Includes handwritten entries for Stanley Clark + C.E. Ferrell, Morris J. + Margaret A. Olson, Raymond M. + Anna S. Alstad, and Oscar + Ferne Olson.

142-29 143-30

Fairwood Beach Basswood Addition

Assessment Roll and Tax List of Real Property in the Town of Unorg #4

Cass County, Minnesota, for Taxes for the Year 1962.

Form 502 MILLER-DAVIS CO., MINNEAPOLIS

* Indicate Type of Property: R-Residential, C-Commercial, I-Industrial, U-Utility, F-Farm, L-Lakeshore, T-Timber, M-Mineral

Table with columns: IN WHOSE NAME ASSESSED, DESCRIPTION OF PROPERTY, TRUE AND FULL VALUATIONS, ASSESSED VALUATIONS, VALUATIONS BY SCHOOL DISTRICTS AS EQUALIZED BY DEPARTMENT OF TAXATION, SOLD FOR TAXES, PAID, WHEN PAID, Number of Receipt, March Settlement 1963, June Settlement 1963, November Settlement 1963, Collections to First Monday in January 1964, Delinquent on First Monday in January 1964, Total Delinquent Tax and Penalty, REMARKS.

Rec-142

142-29

143-30

Fairwood

Chipwood

Beach

Fairwood

Subdivision

Assessment Roll and Tax List of Real Property in the Town of Unorg #4

Cass County, Minnesota, for Taxes for the Year 1962.

Form 500 MILLER-DAVIS CO., MINNEAPOLIS

* Indicate Type of Property: R-Residential, C-Commercial, I-Industrial, U-Utility, F-Farm, L-Lakeshore, T-Timber, M-Mineral

Table with columns: IN WHOSE NAME ASSESSED, DESCRIPTION OF PROPERTY, TRUE AND FULL VALUATIONS, ASSESSED VALUATIONS, VALUATIONS BY SCHOOL DISTRICTS AS EQUALIZED BY DEPARTMENT OF TAXATION, TAXES, PAID, WHEN PAID, Number of Receipt, March Settlement 1963, June Settlement 1963, Penalty, November Settlement 1963, Penalty, Collections to First Monday in January 1964, Penalty, Delinquent on First Monday in January 1964, Total Delinquent Tax and Penalty, REMARKS.

142-29 143-30 Fairwood Township Subdivision

Assessment Roll and Tax List of Real Property in the Town of Unorg. #4

Form 500-MILLER-DAVIS CO., MINNEAPOLIS

* Indicate Type of Property: R-Residential, C-Commercial, I-Industrial, U-Utility, F-Farm, L-Lakeshore, T-Timber, M-Mineral

Table with columns: IN WHOSE NAME ASSESSED, DESCRIPTION OF PROPERTY, TRUTH AND FULL VALUATIONS, ASSESSED VALUATIONS, and FINAL EQUALIZED VALUE. Rows 1-20 list property details for 'U. S. of America'.

Cass County, Minnesota, for Taxes for the Year 1962.

Table with columns: SOLD FOR TAXES, VALUATIONS BY SCHOOL DISTRICTS AS EQUALIZED BY DEPARTMENT OF TAXATION, Tax including State Homestead, State Tax on Non-Homestead, SPECIAL TAXES, TOTAL TAXES, PAID, WHEN PAID, Number of Receipt, and various settlement/penalty dates. Rows 1-20 correspond to the assessment roll.

142-29 143-30

Fairwood Subdivision

Assessment Roll and Tax List of Real Property in the Town of Uray #4

Cass County, Minnesota, for Taxes for the Year 1962.

Table with columns: IN WHOSE NAME ASSESSED, DESCRIPTION OF PROPERTY, TRUE AND FULL VALUATIONS, ASSESSED VALUATIONS, VALUATIONS BY SCHOOL DISTRICTS AS EQUALIZED BY DEPARTMENT OF TAXATION, SOLD FOR TAXES, PAID, WHEN PAID, Number of Receipt, March Settlement 1963, June Settlement 1963, November Settlement 1963, Penalty, Collections to First Monday in January 1964, Delinquent on First Monday in January 1964, Total Delinquent Tax and Penalty, REMARKS.

Burdette E. + Helen M. Churchill
Viola B. Gothman

142-29 143-30 Fairwood Chippewa Falls Subdivision

Assessment Roll and Tax List of Real Property in the Town of Umarog #4

* Indicate Type of Property: R-Residential, C-Commercial, I-Industrial, U-Utility, F-Farm, L-Lakeshore, T-Timber, M-Mineral

Cass County, Minnesota, for Taxes for the Year 1962.

Form 5CD PHILIP-DAVIS CO., MINNEAPOLIS

IN WHOSE NAME ASSESSED	DESCRIPTION OF PROPERTY				No. School District	Indicate Homestead Yes or No	Agri. or Reas. Yes or No	* Indicate Type of Property	TRUE AND FULL VALUATIONS				ASSESSED VALUATIONS							Total Assessed Value as Equalized by the Board of Review	FINAL EQUALIZED VALUE	
	SUBDIVISION	Sec. or Lot	Town or Block	Number of Acres of Land					LAND Excludes of Structures and Improvements	BUILDINGS and Other Structures	MACHINERY Permanently Attached to Real Estate	TOTAL True and Full Value	RURAL		ALL OTHER				TOTAL ASSESSED VALUE			
													Homestead Up to \$4,000 20%	Over \$4,000 and Non-Homestead 33 1/3%	Timber Land Class 3e 20%	Homestead Up to \$4,000 25%	Over \$4,000 and Non-Homestead 40%	MACHINERY Permanently Attached to Real Estate 33 1/3%				Seasonal and Recreational Cabins 33 1/3%
Peter S. Rask	Govt Lot 3 1255 10acs.	9	143 30	7.25	115	no	yes	L	540	135		675						225	225			
E.R. Mackie	PART of Govt Lot 3 (10acs)		10			no	"	"	315			315						105	105			
Mrs. Dorothy Porter Munnell	Govt Lot 1		16			no	no	"	14			14							3	3		
"	E 1/2 of SE 1/4 of SE 1/4 of NE 1/4 of NW 1/4		1.25			no	"	T	3			3							1	1		
	NE 1/4 of NW 1/4																					
	NW 1/4 of NW 1/4																					
	SW 1/4 of NW 1/4																					
	SE 1/4 of NW 1/4																					
	NE 1/4 of SE 1/4																					
	NW 1/4 of SE 1/4																					
	SW 1/4 of SE 1/4																					
	SE 1/4 of SE 1/4																					
				34.50					582	90		672						330	330			
									872	135		1007						330	336			

SOLD FOR TAXES	VALUATIONS BY SCHOOL DISTRICTS AS EQUALIZED BY DEPARTMENT OF TAXATION						Tax including State Homestead	State Tax on Non-Homestead	SPECIAL TAXES	SPECIAL TAXES	TOTAL TAXES	PAID	WHEN PAID	Number of Receipt	March Settlement 1963	June Settlement 1963	Penalty 1963	November Settlement 1963	Penalty 1963	Collections to First Monday in January 1964	Penalty 1964	Delinquent on First Monday in January 1964	Total Delinquent Tax and Penalty	REMARKS
	District No.	District No.	District No.	District No.	District No.	District No.																		
	Rate	Rate	Rate	Rate	Rate	Rate																		
1																								
2																								
3																								
4																								
5																								
6																								
7																								
8																								
9																								
10																								
11																								
12																								
13																								
14																								
15																								
16																								
17																								
18																								
19																								
20																								

142-09
143-30

Redwood
Chippewa
Subdivision

Assessment Roll and Tax List of Real Property in the Town of Unora #4

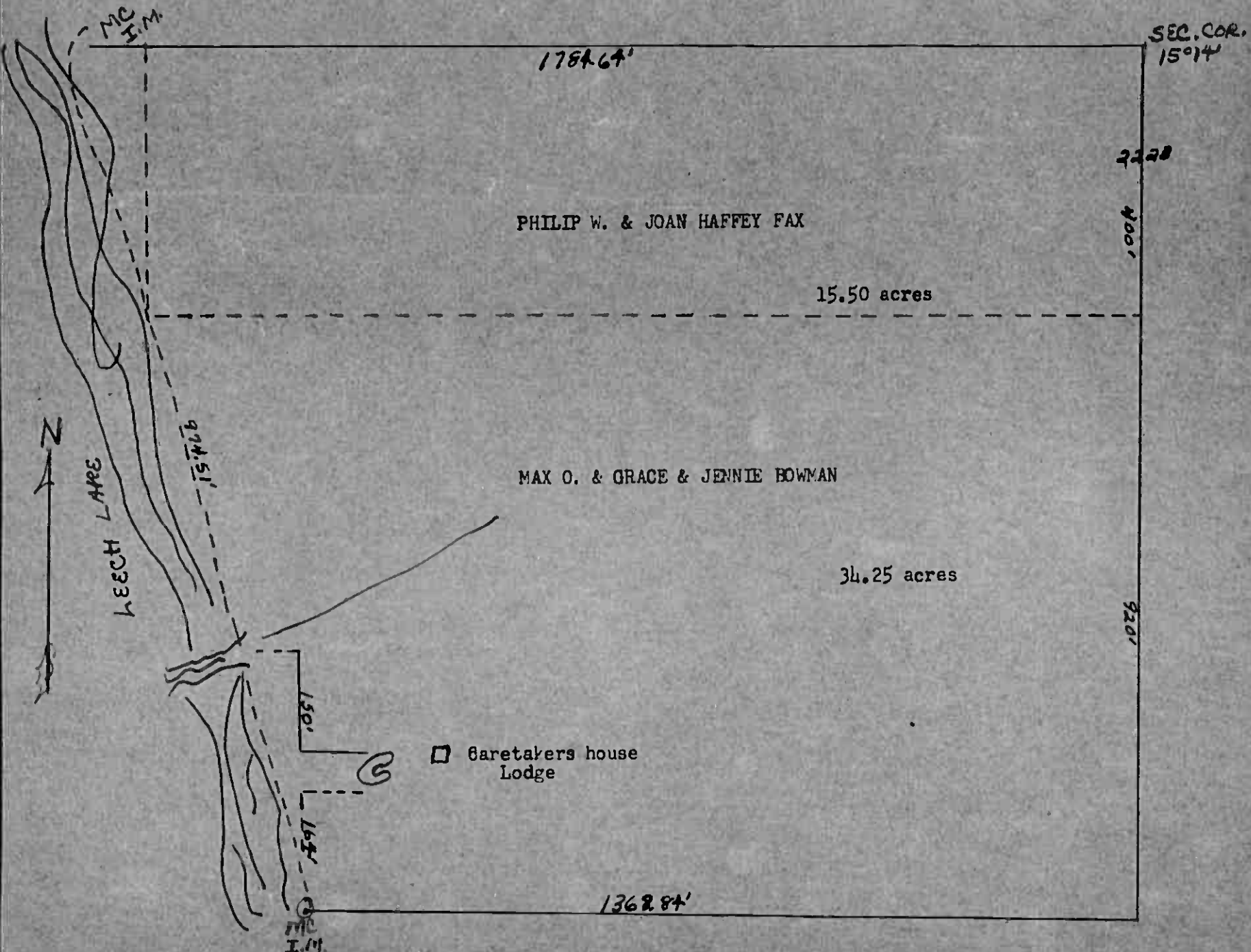
Form 500 MILLER-DAVIS CO., MINNEAPOLIS

Table with columns: IN WHOSE NAME ASSESSED, SUBDIVISION, No. School District, Indicate Homestead, Agri. or Gear, Indicate Type of Property, TRUE AND FULL VALUATIONS, ASSESSED VALUATIONS (RURAL, ALL OTHER), TOTAL ASSESSED VALUE, Total Assessed Value as Equalized by the Board of Review, FINAL EQUALIZED VALUE.

Cass County, Minnesota, for Taxes for the Year 1962.

Table with columns: VALUATIONS BY SCHOOL DISTRICTS AS EQUALIZED BY DEPARTMENT OF TAXATION, Tax Including State Homestead, State Tax on Non-Homestead, SPECIAL TAXES, TOTAL TAXES, PAID, WHEN PAID, Number of Receipt, March Settlement, June Settlement, November Settlement, Collections to First Monday in January, Delinquent on First Monday in January, Total Delinquent Tax and Penalty, REMARKS.

GOV'T LOT 1 - SEC. 22-143-30



Assessment Roll and Tax List of Real Property in the Town of Unorg. #4

Cass County, Minnesota, for Taxes for the Year 1962.

Form SCD-MILLER-DAVIS CO. MINNEAPOLIS

* Indicate Type of Property: R-Residential, C-Commercial, I-Industrial, U-Utility, F-Farm, L-Lakeshore, T-Timber, M-Mineral

Table with columns: IN WHOSE NAME ASSESSED, DESCRIPTION OF PROPERTY, TRUE AND FULL VALUATIONS, ASSESSED VALUATIONS, VALUATIONS BY SCHOOL DISTRICTS AS EQUALIZED BY DEPARTMENT OF TAXATION, TAXES, PAID, WHEN PAID, etc.

(CONT NEXT PAGE)

143-30

Paliswood Subdivision

Assessment Roll and Tax List of Real Property in the Town of Unorganized #4

Cass County, Minnesota, for Taxes for the Year 1962.

Form SCD MILLER-DAVIS CO. MINNEAPOLIS

* Indicate Type of Property: R-Residential, C-Commercial, I-Industrial/U-Utility, F-Farm, L-Lakeshore, T-Timber, M-Mineral

Main table with columns: IN WHOSE NAME ASSESSED, DESCRIPTION OF PROPERTY, TRUE AND FULL VALUATIONS, ASSESSED VALUATIONS, VALUATIONS BY SCHOOL DISTRICTS AS EQUALIZED BY DEPARTMENT OF TAXATION, TAXES, PAID, WHEN PAID, etc.

143-30 142-29

Fairwood, On a plan, Basswood, Subdivision

Assessment Roll and Tax List of Real Property in the Town of Unorgan #4

Form 5C MILLER-DAVIS CO. MINNEAPOLIS

Cass County, Minnesota, for Taxes for the Year 1962.

* Indicate Type of Property: R-Residential, C-Commercial, I-Industrial, U-Utility, F-Farm, L-Lakeshore, T-Timber, M-Mineral

Table with columns: IN WHOSE NAME ASSESSED, DESCRIPTION OF PROPERTY, TRUE AND FULL VALUATIONS, ASSESSED VALUATIONS, VALUATIONS BY SCHOOL DISTRICTS AS EQUALIZED BY DEPARTMENT OF TAXATION, SOLD FOR TAXES, SPECIAL TAXES, TOTAL TAXES, PAID, WHEN PAID, Number of Receipt, March Settlement 1963, June Settlement 1963, Penalty, November Settlement 1963, Penalty, Collections to First Monday in January 1964, Penalty, Delinquent on First Monday in January 1964, Total Delinquent Tax and Penalty, REMARKS.

