

Assessment & Tax list - 1961

Unorg. No. 4

Assessment Roll and Tax List of Real Property in the Town of Unorg. #4

* Indicate Type of Property: R-Residential, C-Commercial, I-Industrial, U-Utility, F-Farm, L-Lakeshore, T-Timber, M-Mineral

Cass County, Minnesota, for Taxes for the Year 1961.

IN WHOSE NAME ASSESSED	DESCRIPTION OF PROPERTY				No. School District	Indicate Homestead Yes or No	Agricultural Use Yes or No	* Indicate Type of Property	TRUE AND FULL VALUATIONS			ASSESSED VALUATIONS							FINAL EQUALIZED VALUE			
	SUBDIVISION	Sec. or Lpt.	Town or Block	Number of Acres of Land					LAND Exclusive of Structures and Improvements	BUILDINGS and Other Structures	MACHINERY Permanently Attached to Real Estate	TOTAL True and Full Value	RURAL		ALL OTHER			MACHINERY Permanently Attached to Real Estate		Seasonal and Recreational Cabins	TOTAL ASSESSED VALUE	Total Assessed Value as Equalized by the Board of Review
													Homestead Up to \$4,000 20%	Over \$4,000 and Non-Homestead 33 1/4%	Timber Land Class 3e 20%	Homestead Up to \$4,000 25%	Over \$4,000 and Non-Homestead 40%					
U. S. of America	1			15 14225	118																	
U. S. of America	2																					
U. S. of America	3																					
U. S. of America	4																					
	5																					
U. S. of America	6																					
U. S. of America	7																					
U. S. of America	8																					
U. S. of America	9																					
	10																					
U. S. of America	11																					
U. S. of America	12																					
U. S. of America	13																					
U. S. of America	14																					
	15																					
U. S. of America	16																					
U. S. of America	17																					
U. S. of America	18																					
U. S. of America	19																					
	20																					

SOLD FOR TAXES	VALUATIONS BY SCHOOL DISTRICTS AS EQUALIZED BY DEPARTMENT OF TAXATION						Tax including State Homestead Mills	State Tax on Non-Homestead Mills	SPECIAL TAXES	SPECIAL TAXES	TOTAL TAXES	PAID	WHEN PAID	Number of Receipt	March Settlement 1962	June Settlement 1962	Penalty 1962	November Settlement 1962	Penalty 1962	Collections to First Monday in January 1963	Penalty 1963	Delinquent on First Monday in January 1963	Total Delinquent Tax and Penalty	REMARKS
	District No.	District No.	District No.	District No.	District No.	District No.																		
	Rate	Rate	Rate	Rate	Rate	Rate																		
	Mills	Mills	Mills	Mills	Mills	Mills																		
1																								
2																								
3																								
4																								
5																								
6																								
7																								
8																								
9																								
10																								
11																								
12																								
13																								
14																								
15																								
16																								
17																								
18																								
19																								
20																								

142-29

143-30

Fairwood

Chippewa

Redwood

Sp. District

Assessment Roll and Tax List of Real Property in the Town of Union #4

* Indicate Type of Property: R-Residential, C-Commercial, I-Industrial, U-Utility, F-Farm, L-Lakeshore, T-Timber, M-Mineral

IN WHOSE NAME ASSESSED	DESCRIPTION OF PROPERTY				No. School District	Indicate Homestead Yes or No	Agricultural or Forest Yes or No	Indicate Type of Property	TRUE AND FULL VALUATIONS			ASSESSED VALUATIONS							FINAL EQUALIZED VALUE			
	SUBDIVISION	Sec. or Lot	Town or Block	No. of Acres of Land					LAND Exclusive of Structures and Improvements	BUILDINGS and Other Structures	MACHINERY Permanently Attached to Real Estate	TOTAL True and Full Value	RURAL		ALL OTHER			MACHINERY Permanently Attached to Real Estate		Seasonal and Recreational Cabins	TOTAL ASSESSED VALUE	Total Assessed Value as Equalized by the Board of Review
													Homestead Up to \$4,000 20%	Over \$4,000 and Non-Homestead 33 1/3%	Timber Land Class 3c 20%	Homestead Up to \$4,000 25%	Over \$4,000 and Non-Homestead 40%					
U. S. of America	1	N E 1/4 of N E 1/4	27 142 25	118																		
U. S. of America	2	N W 1/4 of N E 1/4																				
U. S. of America	3	S W 1/4 of N E 1/4																				
U. S. of America	4	S E 1/4 of N E 1/4																				
	5																					
State of Minnesota	6	N E 1/4 of N W 1/4																				
State of Minnesota	7	N W 1/4 of N W 1/4																				
State of Minnesota	8	S W 1/4 of N W 1/4																				
State of Minnesota	9	S E 1/4 of N W 1/4																				
	10																					
U. S. of America	11	N E 1/4 of S W 1/4																				
U. S. of America	12	N W 1/4 of S W 1/4																				
U. S. of America	13	S W 1/4 of S W 1/4																				
U. S. of America	14	S E 1/4 of S W 1/4																				
	15																					
State of Minnesota	16	N E 1/4 of S E 1/4																				
U. S. of America	17	N W 1/4 of S E 1/4																				
U. S. of America	18	S W 1/4 of S E 1/4																				
U. S. of America	19	S E 1/4 of S E 1/4																				
	20																					

Cass County, Minnesota, for Taxes for the Year 1961.

SOLD FOR TAXES	VALUATIONS BY SCHOOL DISTRICTS AS EQUALIZED BY DEPARTMENT OF TAXATION						Tax including State Homestead	State Tax on Non-Homestead	SPECIAL TAXES	SPECIAL TAXES	TOTAL TAXES	PAID	WHEN PAID	Number of Receipt	March Settlement 1962	June Settlement 1962	Penalty	November Settlement 1962	Penalty	Collections to First Monday in January 1963	Penalty	Delinquent on First Monday in January 1963	Total Delinquent Tax and Penalty	REMARKS
	District No.	District No.	District No.	District No.	District No.	District No.																		
	Rate	Rate	Rate	Rate	Rate	Rate																		

Assessment Roll and Tax List of Real Property in the

Town of *Wagon* #4

* Indicate Type of Property: R-Residential, C-Commercial, I-Industrial, U-Utility, F-Farm, L-Lakeshore, T-Timber, M-Mineral

Form 317 MILLER-DAVIS CO. MINNEAPOLIS

IN WHOSE NAME ASSESSED	DESCRIPTION OF PROPERTY			No. School District	Indicate Homestead Yes or No	Agricultural Use Yes or No	Indicate Type of Property	TRUE AND FULL VALUATIONS														
	SUBDIVISION	Sec. or Lot	Town or Block					Number of Acres of Land	ASSESSED VALUATIONS													
									LAND Exclusive of Structures and Improvements	BUILDINGS and Other Structures	MACHINERY Permanently Attached to Real Estate	TOTAL True and Full Value	RURAL			ALL OTHER				TOTAL ASSESSED VALUE	Total Assessed Value as Equalized by the Board of Review	FINAL EQUALIZED VALUE
													Homestead Up to \$4,000 20%	Over \$4,000 and Non-Homestead 33 1/4%	Timber Land Class 3c 20%	Homestead Up to \$4,000 25%	Over \$4,000 and Non-Homestead 40%	MACHINERY Permanently Attached to Real Estate 33 1/4%	Seasonal and Recreational Cabins 33 1/4%			
			Acres 100ths	Dollars	Dollars	Dollars	Dollars	Dollars	Dollars	Dollars	Dollars	Dollars	Dollars	Dollars	Dollars	Dollars	Dollars					
1	NE 1/4 of NE 1/4	13	142	29																		
2	NW 1/4 of NE 1/4																					
3	GOVT LOT 4			356																		
4	GOVT LOT 1																					
5	GOVT LOT 6			69																		
6	NE 1/4 of NW 1/4																					
7	NW 1/4 of NW 1/4																					
8	SW 1/4 of NW 1/4																					
9	SE 1/4 of NW 1/4																					
10																						
11	NE 1/4 of SW 1/4																					
12	NW 1/4 of SW 1/4																					
13	SW 1/4 of SW 1/4																					
14	SE 1/4 of SW 1/4																					
15																						
16	NE 1/4 of SE 1/4																					
17	NW 1/4 of SE 1/4																					
18	SW 1/4 of SE 1/4																					
19	SE 1/4 of SE 1/4																					
20																						

Virginia Coddington Langfors
 Cont'd to George Sandberg
 State of Minnesota
 for E. Quetz, Loff & James A. Shaw, Jr.
 Baxter A. Smith, Jr.

425

Cass County, Minnesota, for Taxes for the Year 1961.

SOLD FOR TAXES	VALUATIONS BY SCHOOL DISTRICTS AS EQUALIZED BY DEPARTMENT OF TAXATION						Tax Including State Homestead	State Tax on Non-Homestead	SPECIAL TAXES	SPECIAL TAXES	TOTAL TAXES	PAID	WHEN PAID	Number of Receipt	March Settlement 1962	June Settlement 1962	Penalty	November Settlement 1962	Penalty	Collections to First Monday in January 1963	Penalty	Delinquent on First Monday in January 1963	Total Delinquent Tax and Penalty	REMARKS
	District No.	District No.	District No.	District No.	District No.	District No.																		
	Rate	Rate	Rate	Rate	Rate	Rate																		
	Mills	Mills	Mills	Mills	Mills	Mills																		
1																								
2																								
3						33	9.78	30			10.08		PAID IN FULL MAY 31 1962	11694										13064
4																								
5						60	17.78	54			18.32		PAID IN FULL MAY 11 1962	9910										14259
6																								
7																								
8																								
9																								
10																								
11																								
12																								
13																								
14																								
15																								
16																								
17																								
18																								
19																								
20																								

93

76 1/2 2756 84

2840

2840

142-30

142-30

Chipewa

Sub-Division

Assessment Roll and Tax List of Real Property in the Town of Unorg #4

* Indicate Type of Property: R-Residential, C-Commercial, Industrial, U-Utility, F-Farm, L-Lakeshore, T-Timber, M-Mineral

Edin SQU-MILLER-DAVIS CO., MINNEAPOLIS

142-29

143-30

Stanley A. Peterson & Lorenz H. Rickert
Kathryn M. Kahley
Emerson J. & Julianna D. Alendroth
Samuel S. & Olive E. George
Stanley A. Peterson & Lorenz H. Rickert

Tray Arthur Peterson
Maud Arthur Peterson
Harold E. & Janice R. Price

Table with columns: IN WHOSE NAME ASSESSED, DESCRIPTION OF PROPERTY, TRUP AND FULL VALUATIONS, ASSESSED VALUATIONS, FINAL EQUALIZED VALUE. Includes handwritten entries for lots 5, 6, 7, 8, 10, 13, 15, 16.

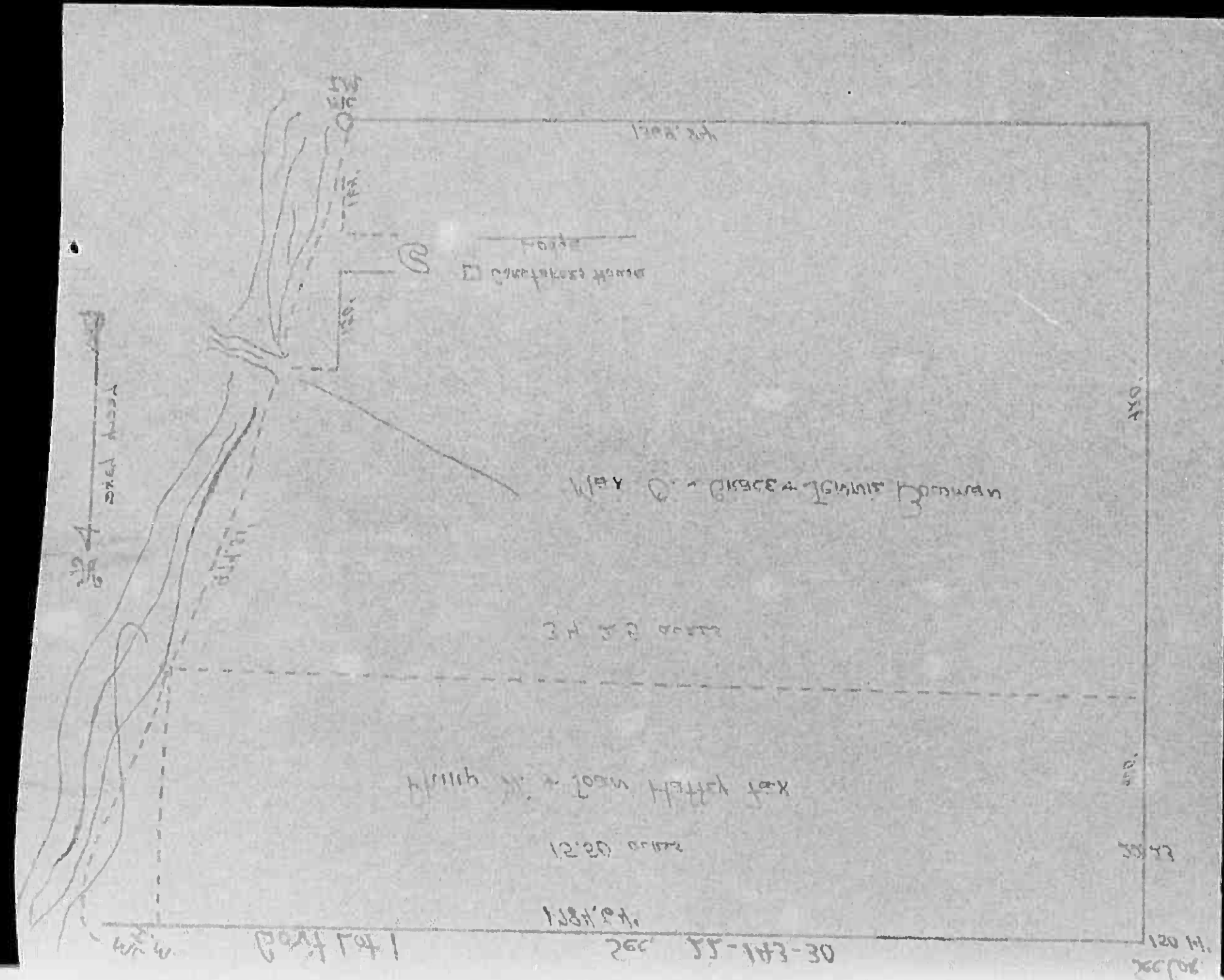
Cass County, Minnesota, for Taxes for the Year 1961.

Table with columns: VALUATIONS BY SCHOOL DISTRICTS AS EQUALIZED BY DEPARTMENT OF TAXATION, Tax Including State Homestead, SPECIAL TAXES, TOTAL TAXES, PAID, WHEN PAID, Number of Receipt, March Settlement, June Settlement, November Settlement, Collections to First Monday in January 1963, Delinquent on First Monday in January 1963, Total Delinquent Tax and Penalty, REMARKS. Includes handwritten entries for lots 1-20.

Fairwood
Chippewa
Basswood
Sub-District

Assessment Roll and Tax List of Real Property in the Town of Univ. #4

* Indicate Type of Property: R-Residential, C-Commercial, I-Industrial, U-Utility, F-Farm, L-Lakeshore, T-Timber, M-Mineral



IN WHOSE NAME ASSESSED	DESCRIPTION OF PROPERTY				TRUE AND FULL VALUATIONS										Total Assessed Value as Equalized by the Board of Review	FINAL EQUALIZED VALUE		
	SUBDIVISION	Sec. of Lot	Town or Block	Number of Acres of Land	No. School District	Indicate Home-Stead Law No.	Agricultural or Other Use or No.	Buildings or Other Improvements	Machinery Permanently Attached to Real Estate	TOTAL True and Full Value	ASSESSED VALUATIONS						TOTAL ASSESSED VALUE	
											RURAL		ALL OTHER					TOTAL ASSESSED VALUE
				Acres (100ths)				Dollars	Dollars	Dollars	Dollars	Dollars	Dollars	Dollars	Dollars	Dollars	Dollars	
	1	NE 1/4	22	143.80	100													
Map Co. + Grace J. Bowman's Jennie Bowman	4	SE 1/4	34	25	100													
	10	N 1/4	15	50	100													
Philip W. + Joan Happy Zol	20	N 1/4	41	75	100													

Cass County, Minnesota, for Taxes for the Year 1961.

SOLD FOR TAXES	VALUATIONS BY SCHOOL DISTRICTS AS EQUALIZED BY DEPARTMENT OF TAXATION					Tax Including State Homestead	State Tax on Non-Homestead	SPECIAL TAXES	SPECIAL TAXES	TOTAL TAXES	PAID	WHEN PAID	Number of Receipt	March Settlement 1961	June Settlement 1961	Penalty	November Settlement 1961	Penalty	Collections to First Monday in January 1961	Penalty	Delinquent on First Monday in January 1961	Total Delinquent Tax and Penalty	REMARKS
	District No.	District No.	District No.	District No.	District No.																		
	Rate	Rate	Rate	Rate	Rate																		
	813					241.04	7.42			248.46	PAID IN FULL	OCT 15 1961	17627									248.46	248.46
	110					3262	100			3362	PAID IN FULL	AUG 24 1961	10623									3362	3362
	925					27366	842			28208												28208	28208

142-26
143-29
143-30

142-26
143-29
143-30

Assessment Roll and Tax List of Real Property in the Town of Unorg #4

* Indicate Type of Property: R-Residential, C-Commercial, A-Industrial, U-Utility, F-Farm, L-Lakeshore, T-Timber, M-Mineral

Form 502 - MILLER-DAVIS CO., MINNEAPOLIS

142-29

143-30

Table with columns: IN WHOSE NAME ASSESSED, SUBDIVISION, No. School District, Indicate Home-Stead View or No, Agri- or Seas- Recr. Yes or No, Indicate Type of Property, TRUE AND FULL VALUATIONS, ASSESSED VALUATIONS, and FINAL EQUALIZED VALUE.

State of Minnesota

Wallis Dickson

(CON'T NEXT PAGE)

22109

Cass County, Minnesota, for Taxes for the Year 1961.

Table with columns: SOLD FOR TAXES, VALUATIONS BY SCHOOL DISTRICTS AS EQUALIZED BY DEPARTMENT OF TAXATION, Tax including State Homestead, State Tax on Homestead, SPECIAL TAXES, TOTAL TAXES, PAID, WHEN PAID, Number of Receipt, March Settlement 1962, June Settlement 1962, November Settlement 1962, Collections to First Monday in January 1963, Delinquent on First Monday in January 1963, Total Delinquent Tax and Penalty, REMARKS.

Handwritten calculations and totals at the bottom of the table.

Fairwood

Chippewa

Beaumont

Sub-Division

Beaumont

Assessment Roll and Tax List of Real Property in the Town of *Iron* of *Unorg #4*

* Indicate Type of Property: R-Residential, C-Commercial, Industrial, U-Utility, F-Farm, L-Lakeshore, T-Timber, M-Mineral

Table with columns: DESCRIPTION OF PROPERTY, TRUE AND FULL VALUATIONS, ASSESSED VALUATIONS, and FINAL EQUALIZED VALUE. Includes handwritten entries for Earl K. & Beeline H. Thorgaard, Spedie Curler Company, Inc., and others.

Cass County, Minnesota, for Taxes for the Year 1961.

Table with columns: VALUATIONS BY SCHOOL DISTRICTS AS EQUALIZED BY DEPARTMENT OF TAXATION, TAXES, PAID, WHEN PAID, and REMARKS. Includes handwritten entries for tax amounts and payment dates.

Assessment Roll and Tax List of Real Property in the Town of Union #4

* Indicate Type of Property: R-Residential, C-Commercial, Industrial, U-Utility, F-Farm, L-Lakeshore, T-Timber, M-Mineral

Form 50 MILLER-DAVIS CO. MINNEAPOLIS

DESCRIPTION OF PROPERTY

TRUE AND FULL VALUATIONS

ASSESSED VALUATIONS

Table with columns: IN WHOSE NAME ASSESSED, SUBDIVISION, No. School District, Indicate Homestead, Acreage, etc. Includes names like Stanley G. Peterson, Robert Lee + Beatrice L. Leeman, etc.

Cass County, Minnesota, for Taxes for the Year 1961.

Table with columns: VALUATIONS BY SCHOOL DISTRICTS AS EQUALIZED BY DEPARTMENT OF TAXATION, SOLD FOR TAXES, District No., Rate, etc. Includes tax amounts and payment dates.

142-25, 142-29, 143-30, Fairwood, Chippewa Beach, Sub-District

Sub-District

