

Assessment & TAX List - 1959

Unorg. 4

REAL PROPERTY BECOMING SUBJECT TO TAXATION SINCE THE LAST PREVIOUS ASSESSMENT OR OMITTED FROM ASSESSMENT ROLLS THE PREVIOUS YEARS.

Assessment of Taxable Real Property in the _____ of _____, Minn., for the Year 1957.

* Indicate Type of Property: R - Residential, C - Commercial, I - Industrial, U - Utility, F - Farm, L - Lakeshore, T - Timber, M - Mineral

Form 334 WILCO-DAVIS COMPANY, MINNEAPOLIS

NAME OF OWNER	School District	DESCRIPTION OF PROPERTY					BY WHOM VALUED	TRUE AND FULL VALUATIONS					ASSESSED VALUATIONS					FINAL EQUALIZED VALUE		
								LAND Exclusive of Structures and Improvements	BUILDINGS and Other Structures	MACHINERY Permanently Attached to Real Estate	TOTAL True and Full Value	RURAL		ALL OTHER		MACHINERY Permanently Attached to Real Estate	TOTAL ASSESSED VALUE		Dollars	
		SUBDIVISION	Sec. or Lot	Twp. or Block	Range	Number of Acres of Land Acres		Dollars	Dollars	Dollars	Dollars	Homestead Up to \$4,000 20%	Over \$4,000 and Non-Homestead 33 1/4 %	Homestead Up to \$4,000 25%	Over \$4,000 and Non-Homestead 40%	33 1/4 %	Dollars	Dollars		
							State													
							County													
							Local Bd.													
							Assessor													
							State													
							County													
							Local Bd.													
							Assessor													
							State													
							County													
							Local Bd.													
							Assessor													
							State													
							County													
							Local Bd.													
							Assessor													
							State													
							County													
							Local Bd.													
							Assessor													
							State													
							County													
							Local Bd.													
							Assessor													
		Total No. of Acres _____					State													
		Total Value as Equalized by _____					County													
		Total Value as Assessed by _____					Local Bd.													
							Assessor													

SUMMARY OF TAX COLLECTION

Original Levy	\$ 9894.84
Additions	\$ _____
Abatements	\$ 9894.84
	\$ 110.50
	\$ 9784.34

COLLECTIONS

March Settlement	\$ 967.73
June Settlement	\$ 4383.18
November Settlement	\$ 3007.41
January Settlement	\$ 297.28
	\$ 8655.60
	\$ 1128.74
Over Collected	\$ _____
Under Collected	\$ _____
Delinquent	\$ 1128.74
	\$ 1128.74
Total	\$ _____

Form 316, REVISED 1944, MINNAPOLIS, MINN.

NAME OF OWNER

TABULAR SCHEDULE OF VALUATIONS, RATES AND TAXES

LEVIED IN THE Mnong #4 OF

RATES AND TAXES

COUNTY OF CASS, STATE OF MINNESOTA

School District No.	VALUATION BY SCHOOL DISTRICTS				RATE OF STATE TAXES		RATE OF COUNTY TAXES										RATE OF TOWN TAXES										RATE OF SCHOOL TAXES		TAXES LEVIED																							
	Agri-cultural Lands	Non-Agri-cultural Lands	Personal Property	Total Value of all Property except Money and Credits	Mills	Total Rate of State Tax	Rev.	H. & B.	Welfare	Bonds and Int.	Def. C.A.B. Proj.	Rate of County Tax	Rev.	R. & H.	Drag Tax	State Loan	Total Rate of Town Tax	Local	Spe-cial	State Loan	Defi-ciency	Tui-tion	Trans-portion	C.O. PERA	Rate of Sch'l Tax	Total Rate of all Taxes	LOCAL 1 MILL AND SPECIAL SCHOOL TAXES BY DISTRICTS	ALL OTHER TAXES																								
Dollars	Dollars	Dollars	Dollars	Mills	Mills	Mills	Mills	Mills	Mills	Mills	Mills	Mills	Mills	Mills	Mills	Mills	Mills	Mills	Mills	Mills	Mills	Mills	Mills	Mills	Mills	Mills	Local 1 Mill	Special	State Loan	Def	C.O. PERA	B+J	Total School Taxes	FUNDS	Rate	Amounts																
115		2480		2480	11.	8.10	35.68	15.	61.95		5.	5.79	129.04	10.				10.	25.	91.					140.	287.14																										
119	15,500	na	4654	20,154							2.								50.	91.				0.9.	115	12400	22568	1240	992	3720	40920	State - Non-Homestead			15850																	
118	1675	2874	9	671							2.								25.	46.25					102.53	249.67																										
Un		5555	na	815							2.								25.	78	34.67				108.07	285.21																										
Assessed Value	Rural 6104	All Other 26,409	Personal Property 6316	Total 34,400															40.	109.56					146.2	243.34																										
Non-Homestead	21,980		6316	28,296															20.	109.56					166.2	313.34																										
Total	28,084		6316	34,400																																																

989484

Total Taxes Real Estate 8141.68

Pers Prop. 1753.16

Total Number of Acres 806.54
 State of Minnesota }
 COUNTY OF CASS }
 Auditor of said County and State aforesaid, do hereby certify that the foregoing is a true and correct Schedule, showing the valuation of all the taxable property, in the town of Mnong #4, in said County, the several rates of Taxation and Totals of the several Tax. Funds levied thereon for the year A. D. 1957.

Witness my hand and official seal, this 7th day of January, A. D. 1957



L. C. Peterson County Auditor
By Helen Bilken, Deputy

Assessment Roll and Tax List of Real Property in the Town of *Journ* of *Umberg* # 4
* Indicate Type of Property: R-Residential, C-Commercial, I-Industrial, U-Utility, F-Farm, L-Lakeshore, T-Timber, M-Mineral

Form 563 HALLER-DAVIS CO., MINNEAPOLIS

Table with columns: IN WHOSE NAME ASSESSED, TO WHOM TRANSFERRED, DESCRIPTION OF PROPERTY (SUBDIVISION, Sec. or Lot, Town or Block, Range, Number of Acres of Land, Acres 100ths), TRUE AND FULL VALUATIONS (LAND, BUILDINGS, MACHINERY, TOTAL), ASSESSED VALUATIONS (RURAL, ALL OTHER, MACHINERY, TOTAL ASSESSED VALUE, Total Assessed Value as Equalized by the Board of Review), FINAL EQUALIZED VALUE.

Miltons Larry
H. J. Bennett Jr. & Timothy T. DeWitt
" " " "
" " " "
State of Minnesota

Cass County, Minnesota, for Taxes for the Year 1959.

Table with columns: SOLD FOR TAXES, VALUATIONS BY SCHOOL DISTRICTS AS EQUALIZED BY DEPARTMENT OF TAXATION (District No., Rate, etc.), Tax including State Homestead, State Tax on Non-Homestead, SPECIAL TAXES, TOTAL TAXES, PAID, WHEN PAID (Month, Day, Year), Number of Receipt, March Settlement 1960, June Settlement 1960, November Settlement 1960, Penalty, Collections to First Monday in January 1961, Delinquent on First Monday in January 1961, Total Delinquent Tax and Penalty, REMARKS.

1918 Pd.
1920 Pd.
1920 Pd.
1920 Pd.
2576.5
1526.9

5758

143-39

143-50

oid

Chipewa Beach

Assessment Roll and Tax List of Real Property in the Town of Long #4

Cass County, Minnesota, for Taxes for the Year 1959.

Form SCD MILLER-DAVIS CO., MINNEAPOLIS

Indicate Type of Property: R-Residential, C-Commercial, I-Industrial, U-Utility, F-Farm, L-Lakeshore, T-Timber, M-Mineral

Main table with columns: IN WHOSE NAME ASSESSED, TO WHOM TRANSFERRED, DESCRIPTION OF PROPERTY, TRUE AND FULL VALUATIONS, ASSESSED VALUATIONS, VALUATIONS BY SCHOOL DISTRICTS AS EQUALIZED BY DEPARTMENT OF TAXATION, SOLD FOR TAXES, PAID, WHEN PAID, etc.

142-25

142-25

142-25

142-25

142-25

142-25

142-25

142-25

Assessment Roll and Tax List of Real Property in the Town of Union #4

Form 5013 MILLER-DAVIS CO., MINNEAPOLIS

Indicate Type of Property: R-Residential, C-Commercial, I-Industrial, U-Utility, F-Farm, L-Lakeshore, T-Timber, M-Mineral

142-25

Table with columns: IN WHOSE NAME ASSESSED, TO WHOM TRANSFERRED, DESCRIPTION OF PROPERTY, TRUE AND FULL VALUATIONS, ASSESSED VALUATIONS, FINAL EQUALIZED VALUE. Includes handwritten entries for 'Rudolph & Meta S. Treuger' and '20.23 & 7.23 of Hook Lot 2'.

Cass County, Minnesota, for Taxes for the Year 1959.

Table with columns: SOLD FOR TAXES, VALUATIONS BY SCHOOL DISTRICTS AS EQUALIZED BY DEPARTMENT OF TAXATION, Tax Including State Homestead, State Tax on Non-Homestead, SPECIAL TAXES, TOTAL TAXES, PAID, WHEN PAID, Number of Receipt, March Settlement 1960, June Settlement 1960, Penalty, November Settlement 1960, Penalty, Collections to First Monday in January 1961, Penalty, Delinquent on First Monday in January 1961, Total Delinquent Tax and Penalty, REMARKS. Includes handwritten entry: 'PAID IN FULL MAY 31 1960 1374'.

142-29

142-30

142-31

142-32

142-33

142-34

Assessment Roll and Tax List of Real Property in the Town of Zumburg #4

Form SCD-MICLER-DAVIS-CO., MINNEAPOLIS

Indicate Type of Property: R-Residential, C-Commercial, I-Industrial, U-Utility, F-Farm, L-Lakeshore, T-Timber, M-Mineral

Table with columns: IN WHOSE NAME ASSESSED, TO WHOM TRANSFERRED, DESCRIPTION OF PROPERTY, TRUE AND FULL VALUATIONS, ASSESSED VALUATIONS, FINAL EQUALIZED VALUE.

Cass County, Minnesota, for Taxes for the Year 1959.

Table with columns: SOLD FOR TAXES, VALUATIONS BY SCHOOL DISTRICTS AS EQUALIZED BY DEPARTMENT OF TAXATION, SPECIAL TAXES, TOTAL TAXES, PAID, WHEN PAID, Number of Receipts, March Settlement, June Settlement, November Settlement, Collections to First Monday in January 1961, Delinquent on First Monday in January 1961, Total Delinquent Tax and Penalty, REMARKS.

Assessment Roll and Tax List of Real Property in the Town of Unorg. # 4,
 * Indicate Type of Property: R-Residential, C-Commercial, I-Industrial, U-Utility, F-Farm, L-Lakeshore, T-Timber, M-Mineral

Form 301 WILSON-DAVIS CO., MINNEAPOLIS

14-30

IN WHOSE NAME ASSESSED	TO WHOM TRANSFERRED	SUBDIVISION	Sec. or Lot	Town or Block	Rng.	Number of Acres of Land	TRUE AND FULL VALUATIONS				ASSESSED VALUATIONS							FINAL EQUALIZED VALUE			
							LAND Exclusive of Structures and Improvements	BUILDINGS and Other Structures	MACHINERY Permanently Attached to Real Estate	TOTAL True and Full Value	RURAL			ALL OTHER					MACHINERY Permanently Attached to Real Estate	TOTAL ASSESSED VALUE	Total Assessed Value as Equalized by the Board of Review
											Homestead Up to \$4,000 20%	Over \$4,000 and Non-Homestead 33 1/3%	Timber Land Class 3e 20%	Homestead Up to \$1,000 25%	Over \$1,000 and Non-Homestead 40%						
Dollars	Dollars	Dollars	Dollars	Dollars	Dollars	Dollars	Dollars	Dollars	Dollars	Dollars	Dollars	Dollars	Dollars	Dollars							
U. S. of America		NEW 1/2 NW 1/4		11		142.25															
U. S. of America		NW 1/4 NW 1/4																			
U. S. of America		SW 1/4 NW 1/4																			
U. S. of America		SE 1/4 NW 1/4																			
U. S. of America		NE 1/4 NW 1/4																			
U. S. of America		NW 1/4 NW 1/4																			
U. S. of America		SW 1/4 NW 1/4																			
U. S. of America		SE 1/4 NW 1/4																			
U. S. of America		NE 1/4 SW 1/4																			
U. S. of America		NW 1/4 SW 1/4																			
U. S. of America		SW 1/4 SW 1/4																			
U. S. of America		SE 1/4 SW 1/4																			
U. S. of America		NE 1/4 SE 1/4																			
U. S. of America		NW 1/4 SE 1/4																			
U. S. of America		SW 1/4 SE 1/4																			
U. S. of America		SE 1/4 SE 1/4																			

Cass County, Minnesota, for Taxes for the Year 1959.

SOLD FOR TAXES	VALUATIONS BY SCHOOL DISTRICTS AS EQUALIZED BY DEPARTMENT OF TAXATION						Tax Including State Homestead	State Tax on Non-Homestead	SPECIAL TAXES	TOTAL TAXES	PAID	WHEN PAID	Number of Receipt	March Settlement 1960	June Settlement 1960	Penalty	November Settlement 1960	Penalty	Collections to First Monday in January 1961	Penalty	Delinquent on First Monday in January 1961	Total Delinquent Tax and Penalty	REMARKS	
	District No.	District No.	District No.	District No.	District No.	District No.																		
	Rate	Rate	Rate	Rate	Rate	Rate																		
	Mills	Mills	Mills	Mills	Mills	Mills																		

14-30

14-30

14-30

Chippewa Beach

Assessment Roll and Tax List of Real Property in the Town of Umerig #4

Form 501 MILLER-DAVIS CO., MINNEAPOLIS

Indicate Type of Property: R-Residential, C-Commercial, I-Industrial, U-Utility, F-Farm, L-Lakeshore, T-Timber, M-Mineral

Table with columns: IN WHOSE NAME ASSESSED, TO WHOM TRANSFERRED, DESCRIPTION OF PROPERTY, TRUE AND FULL VALUATIONS, ASSESSED VALUATIONS, FINAL EQUALIZED VALUE.

Cass County, Minnesota, for Taxes for the Year 1959.

Table with columns: SOLD FOR TAXES, VALUATIONS BY SCHOOL DISTRICTS AS EQUALIZED BY DEPARTMENT OF TAXATION, SPECIAL TAXES, TOTAL TAXES, PAID, WHEN PAID, Number of Receipt, March Settlement 1960, June Settlement 1960, Penalty, November Settlement 1960, Penalty, Collections to First Monday in January 1961, Penalty, Delinquent on First Monday in January 1961, Total Delinquent Tax and Penalty, REMARKS.

Form 50D MILLER-DAVIS CO. MINNEAPOLIS

Indicate Type of Property: R-Residential, G-Commercial, I-Industrial, U-Utility, F-Farm, L-Lakeshore, T-Timber, M-Mineral

IN WHOSE NAME ASSESSED	TO WHOM TRANSFERRED	DESCRIPTION OF PROPERTY					TRUE AND FULL VALUATIONS													FINAL EQUALIZED VALUE
		SUBDIVISION	Sec. of Lot	Town or Block	Rdg. Number of Acres of Land	Acres 100ths	TRUE AND FULL VALUATIONS			ASSESSED VALUATIONS										
							LAND Exclusive of Structures and Improvement	BUILDINGS and Other Structures	MACHINERY Permanently Attached to Real Estate	TOTAL True and Full Value	RURAL		ALL OTHER			MACHINERY Permanently Attached to Real Estate	TOTAL ASSESSED VALUE	Total Assessed Value as Equalized by the Board of Review		
											Homestead Up to \$1,000 20%	Over \$1,000 and Non-Homestead 33 1/3%	Timber Land Class 3e 20%	Homestead Up to \$1,000 25%	Over \$1,000 and Non-Homestead 40%				33 1/3%	
		Dollars	Dollars	Dollars	Dollars	Dollars	Dollars	Dollars	Dollars	Dollars	Dollars	Dollars	Dollars	Dollars	Dollars					
U. S. of America		1	NE 1/4 of NE 1/4		15 1/2 25															
U. S. of America		2	NW 1/4 of NE 1/4																	
U. S. of America		3	SW 1/4 of NE 1/4																	
U. S. of America		4	SE 1/4 of NE 1/4																	
U. S. of America		5																		
U. S. of America		6	NE 1/4 of NW 1/4																	
U. S. of America		7	NW 1/4 of NW 1/4																	
U. S. of America		8	SW 1/4 of NW 1/4																	
U. S. of America		9	SE 1/4 of NW 1/4																	
U. S. of America		10																		
U. S. of America		11	N 1/2 of SW 1/4																	
U. S. of America		12	NW 1/4 of SW 1/4																	
U. S. of America		13	SW 1/4 of SW 1/4																	
U. S. of America		14	SE 1/4 of SW 1/4																	
U. S. of America		15																		
U. S. of America		16	NE 1/4 of SE 1/4																	
U. S. of America		17	NW 1/4 of SE 1/4																	
U. S. of America		18	SW 1/4 of SE 1/4																	
U. S. of America		19	SE 1/4 of SE 1/4																	
U. S. of America		20																		

SOLD FOR TAXES	VALUATIONS BY SCHOOL DISTRICTS AS EQUALIZED BY DEPARTMENT OF TAXATION						Tax including State Homestead	State Tax on Non-Homestead	SPECIAL TAXES	TOTAL TAXES	PAID	WHEN PAID	Number of Receipts	March Settlement 1960	June Settlement 1960	Penalty	November Settlement 1960	Penalty	Collections to First Monday in January 1961	Penalty	Delinquent on First Monday in January 1961	Total Delinquent Tax and Penalty	REMARKS	
	District No.	District No.	District No.	District No.	District No.	District No.																		
	Rate	Rate	Rate	Rate	Rate	Rate																		
	Mills	Mills	Mills	Mills	Mills	Mills																		
												\$ cts.	\$ cts.	\$ cts.	\$ cts.	\$ cts.	\$ cts.	\$ cts.	\$ cts.	\$ cts.	\$ cts.	\$ cts.	\$ cts.	
												Month	Day	Year	\$ cts.	\$ cts.	\$ cts.	\$ cts.	\$ cts.	\$ cts.	\$ cts.	\$ cts.	\$ cts.	

142-29

143-30

Chippewa Beach

Assessment Roll and Tax List of Real Property in the Town of Umerig # 4

Form 501 MILLER-DAVIS CO., MINNEAPOLIS

Indicate Type of Property: R-Residential, C-Commercial, I-Industrial, U-Utility, F-Farm, L-Lakeshore, T-Timber, M-Mineral

Table with columns: IN WHOSE NAME ASSESSED, TO WHOM TRANSFERRED, DESCRIPTION OF PROPERTY, TRUE AND FULL VALUATIONS, ASSESSED VALUATIONS, and FINAL EQUALIZED VALUE. Includes handwritten entries for 'State of Minnesota' and 'Gyland M. Dicks'.

32

Cass County, Minnesota, for Taxes for the Year 1959.

Table with columns: SOLD FOR TAXES, VALUATIONS BY SCHOOL DISTRICTS AS EQUALIZED BY DEPARTMENT OF TAXATION, Tax Including State Homestead, State Tax on Non-Homestead, SPECIAL TAXES, TOTAL TAXES, PAID, WHEN PAID, Number of Receipt, March Settlement 1960, June Settlement 1960, Penalty, November Settlement 1960, Penalty, Collections to First Monday in January 1961, Penalty, Delinquent on First Monday in January 1961, Total Delinquent Tax and Penalty, REMARKS.

70

1960

44

2004

2004

142-29

143-50 001

Childreva Beach

Assessment Roll and Tax List of Real Property in the Town of Zumbro #4

Indicate Type of Property: R-Residential, C-Commercial, I-Industrial, U-Utility, F-Farm, L-Lakeshore, T-Timber, M-Mineral

Table with columns: IN WHOSE NAME ASSESSED, TO WHOM TRANSFERRED, DESCRIPTION OF PROPERTY, TRUE AND FULL VALUATIONS, ASSESSED VALUATIONS, FINAL EQUALIZED VALUE. Includes handwritten entries for State of Minnesota, Roland Zwick, Frank Osborn, and U.S. of America.

8480

Cass County, Minnesota, for Taxes for the Year 1959.

Table with columns: SOLD FOR TAXES, VALUATIONS BY SCHOOL DISTRICTS AS EQUALIZED BY DEPARTMENT OF TAXATION, TAX INCLUDING STATE HOMESTEAD, STATE TAX ON NON-HOMESTEAD, SPECIAL TAXES, TOTAL TAXES, PAID, WHEN PAID, Number of Receipt, March Settlement 1960, June Settlement 1960, November Settlement 1960, Collections to First Monday in January 1961, Delinquent on First Monday in January 1961, Total Delinquent Tax and Penalty, REMARKS. Includes handwritten entries for tax amounts and dates.

247

6920 152

7072

944

6128

11310

142-28

143-30

Chippewa Beach

Assessment Roll and Tax List of Real Property in the Town of Uberg #4

Form 501 MILLER-DAVIS CO., MINNEAPOLIS

Indicate Type of Property: R-Residential, C-Commercial, I-Industrial, U-Utility, F-Farm, L-Lakeshore, T-Timber, M-Mineral

Table with columns: IN WHOSE NAME ASSESSED, TO WHOM TRANSFERRED, DESCRIPTION OF PROPERTY, TRUE AND FULL VALUATIONS, ASSESSED VALUATIONS, and FINAL EQUALIZED VALUE. Includes handwritten entries for lots 1-19 and subdivisions like 'NE 1/4 of NE 1/4'.

Cass County, Minnesota, for Taxes for the Year 1959.

Table with columns: VALUATIONS BY SCHOOL DISTRICTS AS EQUALIZED BY DEPARTMENT OF TAXATION, SOLD FOR TAXES, SPECIAL TAXES, TOTAL TAXES, PAID, WHEN PAID, and various settlement and penalty columns for 1960.

143-29

143-30

Chippewa Beach

Assessment Roll and Tax List of Real Property in the Town of Union # 4

Form 501 MILLER-O'NEIL CO., MINNEAPOLIS

Indicate Type of Property: R-Residential, C-Commercial, I-Industrial, U-Utility, F-Farm, L-Lakeshore, T-Timber, M-Mineral

Table with columns: IN WHOSE NAME ASSESSED, TO WHOM TRANSFERRED, DESCRIPTION OF PROPERTY, TRUE AND FULL VALUATIONS, ASSESSED VALUATIONS, and FINAL EQUALIZED VALUE.

Cass County, Minnesota, for Taxes for the Year 1959.

Table with columns: VALUATIONS BY SCHOOL DISTRICTS AS EQUALIZED BY DEPARTMENT OF TAXATION, SPECIAL TAXES, TOTAL TAXES, PAID, WHEN PAID, Number of Receipt, March Settlement 1960, June Settlement 1960, November Settlement 1960, Penalty, Collections to First Monday in January 1961, Delinquent on First Monday in January 1961, Total Delinquent Tax and Penalty, REMARKS.

143-29

143-29

143-30

143-30

143-30

143-30

143-30

143-30

Assessment Roll and Tax List of Real Property in the Town of Umoreh #4

PUBLISHED BY MILLER-DAVIS CO., MINNEAPOLIS

Indicate Type of Property: R-Residential, C-Commercial, I-Industrial, U-Utility, F-Farm, L-Lakeshore, T-Timber, M-Mineral

Table with columns: IN WHOSE NAME ASSESSED, TO WHOM TRANSFERRED, DESCRIPTION OF PROPERTY, TRUE AND FULL VALUATIONS, ASSESSED VALUATIONS, and FINAL EQUALIZED VALUE.

Cass County, Minnesota, for Taxes for the Year 1959.

Table with columns: VALUATIONS BY SCHOOL DISTRICTS AS EQUALIZED BY DEPARTMENT OF TAXATION, TAXES, PAID, WHEN PAID, Number of Receipt, March Settlement 1960, June Settlement 1960, November Settlement 1960, Collections to First Monday in January 1961, Delinquent on First Monday in January 1961, Total Delinquent Tax and Penalty, and REMARKS.

Assessment Roll and Tax List of Real Property in the Town of Union #4

Form 501 MILLER-DAVIS CO., MINNEAPOLIS

Indicate Type of Property: R-Residential, C-Commercial, I-Industrial, U-Utility, F-Farm, L-Lakeshore, T-Timber, M-Mineral

Table with columns: IN WHOSE NAME ASSESSED, TO WHOM TRANSFERRED, DESCRIPTION OF PROPERTY, TRUE AND FULL VALUATIONS, ASSESSED VALUATIONS, FINAL EQUALIZED VALUE.

Cass County, Minnesota, for Taxes for the Year 1959.

Table with columns: SOLD FOR TAXES, VALUATIONS BY SCHOOL DISTRICTS AS EQUALIZED BY DEPARTMENT OF TAXATION, Tax including State Homestead, State Tax on Non-Homestead, SPECIAL TAXES, TOTAL TAXES, PAID, WHEN PAID, Number of Receipt, March Settlement 1960, June Settlement 1960, Penalty, November Settlement 1960, Penalty, Collections to First Monday in January 1961, Penalty, Delinquent on First Monday in January 1961, Total Delinquent Tax and Penalty, REMARKS.

142-29

143-30

Childs Beach

Assessment Roll and Tax List of Real Property in the Town of Umerig #4

Indicate Type of Property: R-Residential, C-Commercial, I-Industrial, U-Utility, F-Farm, L-Lakeshore, T-Timber, M-Mineral

Form SCD MILLER-DAVIS-COP. MINNEAPOLIS

Main table with columns: IN WHOSE NAME ASSESSED, TO WHOM TRANSFERRED, DESCRIPTION OF PROPERTY (Subdivision, Acres, etc.), TRUE AND FULL VALUATIONS (Land, Buildings, etc.), ASSESSED VALUATIONS (Rural, All Other, etc.), VALUATIONS BY SCHOOL DISTRICTS AS EQUALIZED BY DEPARTMENT OF TAXATION, TAXES (Special, Total, etc.), PAID, WHEN PAID, and REMARKS. Includes handwritten values like '27 142 25' and '118'.

142-29

142-29

142-30

00d

Ohlpeva Beach

Assessment Roll and Tax List of Real Property in the Town of Umoreh # 4

Cass County, Minnesota, for Taxes for the Year 1959.

Form 8C-D MILLER-DAVIS CO. MINNEAPOLIS

Indicate Type of Property: R-Residential, C-Commercial, I-Industrial, U-Utility, F-Farm, L-Lakeshore, T-Timber, M-Mineral

142-29

IN WHOSE NAME ASSESSED	TO WHOM TRANSFERRED	DESCRIPTION OF PROPERTY			TRUE AND FULL VALUATIONS			ASSESSED VALUATIONS							FINAL EQUALIZED VALUE		
		SUBDIVISION	Sec. or Lot	Town or Block	Machinery Permanently Attached to Real Estate	BUILDINGS and Other Structures	LAND Exclusive of Structures and Improvements	TOTAL True and Full Value	RURAL		ALL OTHER			MACHINERY Permanently Attached to Real Estate		TOTAL ASSESSED VALUE	Total Assessed Value as Equalized by the Board of Review
									Number of Acres of Land	Homestead Up to \$4,000 20%	Over \$4,000 and Non-Homestead 33 1/3%	Timber Land Class 2e 20%	Homestead Up to \$4,000 25%				
State of Minnesota		1	NEW	NE 1/4			28142.25										
State of Minnesota		2	NEW	NE 1/4													
State of Minnesota		3	NEW	SW 1/4													
State of Minnesota		4	NEW	SE 1/4													
U. S. of America		6	NEW	NE 1/4													
U. S. of America		7	NEW	NW 1/4													
U. S. of America		8	NEW	SW 1/4													
U. S. of America		9	NEW	SE 1/4													
U. S. of America		11	NEW	SW 1/4													
U. S. of America		12	NEW	NW 1/4													
State of Minnesota		13	NEW	SW 1/4													
U. S. of America		14	NEW	SE 1/4													
State of Minnesota		16	NEW	NE 1/4													
U. S. of America		17	NEW	NW 1/4													
U. S. of America		18	NEW	SW 1/4													
State of Minnesota		19	NEW	SE 1/4													
		20															

SOLD FOR TAXES	VALUATIONS BY SCHOOL DISTRICTS AS EQUALIZED BY DEPARTMENT OF TAXATION						Tax Including State Homestead	State Tax on Non-Homestead	SPECIAL TAXES	TOTAL TAXES	PAID	WHEN PAID	Number of Receipt	March Settlement 1960	June Settlement 1960	Penalty	November Settlement 1960	Penalty	Collections to First Monday in January 1961	Penalty	Delinquent on First Monday in January 1961	Total Delinquent Tax and Penalty	REMARKS
	District No.	District No.	District No.	District No.	District No.	District No.																	
	Rate	Rate	Rate	Rate	Rate	Rate																	
	Rate	Rate	Rate	Rate	Rate	Rate																	

142-29
142-30
Chapman Beach

Assessment Roll and Tax List of Real Property in the Town of Union # 4

Form 501 MILLER-DAVIS CO., MINNEAPOLIS

Indicate Type of Property: R-Residential, C-Commercial, I-Industrial, U-Utility, F-Farm, L-Lakeshore, T-Timber, M-Mineral

Table with columns: IN WHOSE NAME ASSESSED, TO WHOM TRANSFERRED, DESCRIPTION OF PROPERTY, TRUE AND FULL VALUATIONS, ASSESSED VALUATIONS, FINAL EQUALIZED VALUE.

Cass County, Minnesota, for Taxes for the Year 1959.

Table with columns: SOLD FOR TAXES, VALUATIONS BY SCHOOL DISTRICTS AS EQUALIZED BY DEPARTMENT OF TAXATION, Tax including State Homestead, State Tax on Non-Homestead, SPECIAL TAXES, TOTAL TAXES, PAID, WHEN PAID, Number of Receipts, March Settlement 1960, June Settlement 1960, November Settlement 1960, Collections to First Monday in January 1961, Delinquent on First Monday in January 1961, Total Delinquent Tax and Penalty, REMARKS.

142-25

142-29

142-30

142-31

142-32

142-33

142-34

Chippewa Beach

Assessment Roll and Tax List of Real Property in the Town of Umerig #4

Indicate Type of Property: R-Residential, C-Commercial, I-Industrial, U-Utility, F-Farm, L-Lakeshore, T-Timber, M-Mineral

Form 301 MILLER-DAVIS CO., MINNEAPOLIS

IN WHOSE NAME ASSESSED	TO WHOM TRANSFERRED	DESCRIPTION OF PROPERTY				No. School District	Indicate Homestead Tax or No	Indicate Agricultural Tax or No	Indicate Type of Property	TRUE AND FULL VALUATIONS						Total Assessed Value as Equalized by the Board of Review	FINAL EQUALIZED VALUE				
		SUBDIVISION	Sec. or Lot	Town or Block	No. of Acres of Land					LAND Excludes of Structures and Improvements	BUILDINGS and Other Structures	MACHINERY Permanently Attached to Real Estate	TOTAL True and Full Value	RURAL				ALL OTHER		MACHINERY Permanently Attached to Real Estate	TOTAL ASSESSED VALUE
														Homestead Up to \$4,000 20%	Over \$4,000 and Non-Homestead 33 1/3%			Timber Land Class Je 20%	Homestead Up to \$1,000 25%		
State of Minnesota		NE 1/4	32	142 25	118																
U. S. of America		NW 1/4																			
U. S. of America		SW 1/4																			
State of Minnesota		SE 1/4																			
U. S. of America		NE 1/4																			
George W. Battersome		NW 1/4		40																	
Clifford A. Battersome		SW 1/4		40																	
U. S. of America		SE 1/4																			
U. S. of America		NE 1/4																			
U. S. of America		NW 1/4																			
U. S. of America		SW 1/4																			
U. S. of America		SE 1/4																			
U. S. of America		NE 1/4																			
U. S. of America		NW 1/4																			
U. S. of America		SW 1/4																			
U. S. of America		SE 1/4																			
				80																	

Cass County, Minnesota, for Taxes for the Year 1959.

SOLD FOR TAXES	VALUATIONS BY SCHOOL DISTRICTS AS EQUALIZED BY DEPARTMENT OF TAXATION						Tax Including State Homestead	State Tax on Non-Homestead	SPECIAL TAXES	TOTAL TAXES	PAID	WHEN PAID	Number of Receipt	March Settlement 1960	June Settlement 1960	Penalty	November Settlement 1960	Penalty	Collections to First Monday in January 1961	Penalty	Delinquent on First Monday in January 1961	Total Delinquent Tax and Penalty	REMARKS
	District No.	District No.	District No.	District No.	District No.	District No.																	
	Rate	Rate	Rate	Rate	Rate	Rate																	
	118																						
	110						2808		2808		PAID IN FULL	APR 13 1960	4639		2808								
	48						1226	30	1256													1256	
	110						4034	30	4064						2808							1256	

142-29

143-30

143-30

Chippewa Beach

Assessment Roll and Tax List of Real Property in the Town of Union, # 4

Form SCD MILLER-DAVIS CO., MINNEAPOLIS

Indicate Type of Property: R-Residential, C-Commercial, I-Industrial, U-Utility, F-Farm, L-Lakeshore, T-Timber, M-Mineral

142-25

Cass County, Minnesota, for Taxes for the Year 1959.

IN WHOSE NAME ASSESSED	TO WHOM TRANSFERRED	DESCRIPTION OF PROPERTY					TRUE AND FULL VALUATIONS							FINAL EQUALIZED VALUE	SOLD FOR TAXES	VALUATIONS BY SCHOOL DISTRICTS AS EQUALIZED BY DEPARTMENT OF TAXATION						PAID	WHEN PAID	Number of Receipt	March Settlement 1960	June Settlement 1960	Penalty	November Settlement 1960	Penalty	Collections to First Monday in January 1961	Penalty	Delinquent on First Monday in January 1961	Total Delinquent Tax and Penalty	REMARKS					
		SUBDIVISION	Sec. or Lot	Town or Block	Rdg.	Number of Acres of Land	LAND Exclusive of Structures and Improvements	BUILDINGS and Other Structures	MACHINERY Permanently Attached to Real Estate	TOTAL True and Full Value	RURAL		ALL OTHER			MACHINERY Permanently Attached to Real Estate	TOTAL ASSESSED VALUE	Total Assessed Value as Equalized by the Board of Review	District No.	District No.	District No.														District No.	District No.	District No.		
											Rate	Rate	Rate						Rate	Rate	Rate														Rate	Rate	Rate	Rate	Rate
											Mills	Mills	Mills						Mills	Mills	Mills														Mills	Mills	Mills	Mills	Mills
U. S. of America					NE 1/4 of NW 1/4					Homestead Up to \$4,000 20%	Over \$4,000 and Non-Homestead 33 1/3%	Timber Land Class 3c 20%	Homestead Up to \$4,000 25%	Over \$4,000 and Non-Homestead 40%	MACHINERY Attached to Real Estate 33 1/3%																								
U. S. of America					NW 1/4 of NE 1/4																																		
U. S. of America					SW 1/4 of NE 1/4																																		
U. S. of America					SE 1/4 of NE 1/4																																		
U. S. of America																																							
U. S. of America					NE 1/4 of NW 1/4																																		
U. S. of America					NW 1/4 of NW 1/4																																		
U. S. of America					SW 1/4 of NW 1/4																																		
U. S. of America					SE 1/4 of NW 1/4																																		
U. S. of America																																							
U. S. of America					NE 1/4 of SE 1/4																																		
U. S. of America					NW 1/4 of SE 1/4																																		
U. S. of America					SW 1/4 of SE 1/4																																		
U. S. of America					SE 1/4 of SE 1/4																																		

142-26

143-50

Chippewa Beach

Assessment Roll and Tax List of Real Property in the Town of Unorg. #4

Indicate Type of Property: R-Residential, C-Commercial, I-Industrial, U-Utility, F-Farm, L-Lakeshore, T-Timber, M-Mineral

Form 508 MILLER-DAY CO., MINNEAPOLIS

Table with columns: IN WHOSE NAME ASSESSED, TO WHOM TRANSFERRED, DESCRIPTION OF PROPERTY, TRUE AND FULL VALUATIONS, ASSESSED VALUATIONS, and FINAL EQUALIZED VALUE.

Cass County, Minnesota, for Taxes for the Year 1959.

Table with columns: VALUATIONS BY SCHOOL DISTRICTS AS EQUALIZED BY DEPARTMENT OF TAXATION, TAX INCLUDING STATE HOMESTEAD, SPECIAL TAXES, TOTAL TAXES, PAID, WHEN PAID, Number of Receipt, March Settlement 1960, June Settlement 1960, November Settlement 1960, Collections to First Monday in January 1961, Delinquent on First Monday in January 1961, Total Delinquent Tax and Penalty, and REMARKS.

142-29

142-50

Chippewa Beach

Assessment Roll and Tax List of Real Property in the Town of Umerig #4,

Indicate Type of Property: R-Residential, C-Commercial, I-Industrial, U-Utility, F-Farm, L-Lakeshore, T-Timber, M-Mineral

Form 301 MILLER-DAVIS CO., MINNEAPOLIS

DESCRIPTION OF PROPERTY

TRUE AND FULL VALUATIONS

ASSESSED VALUATIONS

VALUATIONS BY SCHOOL DISTRICTS AS EQUALIZED BY DEPARTMENT OF TAXATION

Table with columns: IN WHOSE NAME ASSESSED, TO WHOM TRANSFERRED, SUBDIVISION, Acres, and various valuation categories (RURAL, ALL OTHER, MACHINERY, etc.), followed by a tax schedule with columns for taxes (SPECIAL, TOTAL, PAID), when paid, and settlement dates.

Cass County, Minnesota, for Taxes for the Year 1959.

143-25

143-39

143-50

143-60

143-70

143-80

143-90

Chipewa Beach

Assessment Roll and Tax List of Real Property in the Town of Young #4

Form SCD MILLER-DAVIS CO., MINNEAPOLIS

Indicate Type of Property: R-Residential, C-Commercial, I-Industrial, U-Utility, F-Farm, L-Lakeshore, T-Timber, M-Mineral

DESCRIPTION OF PROPERTY

TRUE AND FULL VALUATIONS

ASSESSED VALUATIONS

Main table with columns: IN WHOSE NAME ASSESSED, TO WHOM TRANSFERRED, SUBDIVISION, Sec. or Lot, Town or Block, Reg., Number of Acres of Land, No. School District, Indicate Homestead Tax or No, Indicate Agricultural Tax or No, Indicate Type of Property, LAND EXCLUSIVE OF STRUCTURES AND IMPROVEMENTS, BUILDINGS AND OTHER STRUCTURES, MACHINERY PERMANENTLY ATTACHED TO REAL ESTATE, TOTAL TRUE AND FULL VALUE, RURAL (Homestead Up to \$1,000 20%, Over \$1,000 and Non-Homestead 33 1/3%), ALL OTHER (Homestead Up to \$1,000 25%, Over \$1,000 and Non-Homestead 40%), MACHINERY PERMANENTLY ATTACHED TO REAL ESTATE 33 1/3%, TOTAL ASSESSED VALUE, Total Assessed Value as Equalized by the Board of Review, FINAL EQUALIZED VALUE.

Cass County, Minnesota, for Taxes for the Year 1959.

Tax payment table with columns: SOLD FOR TAXES, District No., District No., District No., District No., District No., District No., Tax Including State Homestead, State Tax on Non-Homestead, SPECIAL TAXES, TOTAL TAXES, PAID, WHEN PAID (Month Day Year), Number of Receipt, March Settlement 1960, June Settlement 1960, Penalty, November Settlement 1960, Collections to First Monday in January 1961, Delinquent on First Monday in January 1961, Total Delinquent Tax and Penalty, REMARKS.

142-25

142-28

142-30

Chipewa Beach

Assessment Roll and Tax List of Real Property in the Town of Umareg #4

Indicate Type of Property: R-Residential, C-Commercial, I-Industrial, U-Utility, F-Farm, L-Lakeshore, T-Timber, M-Mineral

Form 501 MILLER-DAVIS CO-MINNEAPOLIS

Table with columns: IN WHOSE NAME ASSESSED, TO WHOM TRANSFERRED, SUBDIVISION, TRUE AND FULL VALUATIONS (LAND, BUILDINGS, MACHINERY, TOTAL), ASSESSED VALUATIONS (RURAL, ALL OTHER, MACHINERY), TOTAL ASSESSED VALUE, FINAL EQUALIZED VALUE.

Cass County, Minnesota, for Taxes for the Year 1959.

Table with columns: SOLD FOR TAXES, VALUATIONS BY SCHOOL DISTRICTS AS EQUALIZED BY DEPARTMENT OF TAXATION, Tax including State Homestead, SPECIAL TAXES, TOTAL TAXES, PAID, WHEN PAID, Number of Receipt, March Settlement 1960, June Settlement 1960, Penalty, November Settlement 1960, Collections to First Monday in January 1961, Delinquent on First Monday in January 1961, Total Delinquent Tax and Penalty, REMARKS.

142-25

142-29

142-30

Chippewa Beach

Assessment Roll and Tax List of Real Property in the Town of Umerig # 4

Indicate Type of Property: R-Residential, C-Commercial, I-Industrial, U-Utility, F-Farm, L-Lakeshore, T-Timber, M-Mineral

Form 500

Main table with columns: IN WHOSE NAME ASSESSED, TO WHOM TRANSFERRED, DESCRIPTION OF PROPERTY, TRUE AND FULL VALUATIONS, ASSESSED VALUATIONS, FINAL EQUALIZED VALUE.

Cass County, Minnesota, for Taxes for the Year 1959.

Tax summary table with columns: SOLD FOR TAXES, VALUATIONS BY SCHOOL DISTRICTS AS EQUALIZED BY DEPARTMENT OF TAXATION, SPECIAL TAXES, TOTAL TAXES, PAID, WHEN PAID, March Settlement 1960, June Settlement 1960, November Settlement 1960, Total Delinquent Tax and Penalty, REMARKS.

14-29

14-30

14-30

Chilpewa Beach

Assessment Roll and Tax List of Real Property in the Town of Umoreh #4

Indicate Type of Property: R-Residential, C-Commercial, I-Industrial, U-Utility, F-Farm, L-Lakeshore, T-Timber, M-Mineral

Form-SCD

Table with columns: IN WHOSE NAME ASSESSED, TO WHOM TRANSFERRED, DESCRIPTION OF PROPERTY, TRUE AND FULL VALUATIONS, ASSESSED VALUATIONS, and FINAL EQUALIZED VALUE. Includes handwritten entries for 'I. Pokorny' and 'Arthur E. Braughton'.

Cass County, Minnesota, for Taxes for the Year 1959.

Table with columns: SOLD FOR TAXES, VALUATIONS BY SCHOOL DISTRICTS AS EQUALIZED BY DEPARTMENT OF TAXATION, SPECIAL TAXES, TOTAL TAXES, PAID, WHEN PAID, and REMARKS. Includes handwritten entries for 'PAID IN FULL MAY 31 1960'.

Assessment Roll and Tax List of Real Property in the Town of Union #4

Indicate Type of Property: R-Residential, C-Commercial, I-Industrial, U-Utility, F-Farm, L-Lakeshore, T-Timber, M-Mineral

Cass County, Minnesota, for Taxes for the Year 1959.

142-25
143-29
143-30

IN WHOSE NAME ASSESSED	TO WHOM TRANSFERRED	DESCRIPTION OF PROPERTY			TRUE AND FULL VALUATIONS												FINAL EQUALIZED VALUE
		Subdivision	Sec or Lot	Town or Block	Reg.	Number of Acres of Land	RURAL				ALL OTHER				MACHINERY		
						Acres	100ths	Homestead Up to \$4,000 20%	Over \$4,000 and Non-Homestead 33 1/3%	Timber Land Class A 20%	Homestead Up to \$4,000 25%	Over \$4,000 and Non-Homestead 40%	MACHINERY Permanently Attached to Real Estate 33 1/3%	TOTAL ASSESSED VALUE	Dollars		
U. S. of America		NE 1/4 of NE 1/4				3	143	30									
U. S. of America		NE 1/4 of NW 1/4															
B. J. Nelson Moring & Land Co.		NE 1/4 of NW 1/4 Lot 2				2											
U. S. of America		NE 1/4 of SW 1/4															
U. S. of America		NE 1/4 of NE 1/4				5	143	30									

SOLD FOR TAXES	VALUATIONS BY SCHOOL DISTRICTS AS EQUALIZED BY DEPARTMENT OF TAXATION						Tax including State Homestead	State Tax on Non-Homestead	SPECIAL TAXES	TOTAL TAXES	PAID	WHEN PAID	Number of Receipts	March Settlement 1960	June Settlement 1960	Penalty	November Settlement 1960	Penalty	Collections to First Monday in January 1961	Penalty	Delinquent on First Monday in January 1961	Total Delinquent Tax and Penalty	REMARKS
	District No.	District No.	District No.	District No.	District No.	District No.																	

Fairwood
Chippewa Beach

Form 503 MILLER-DAVIS CO., MINNEAPOLIS

* Indicate Type of Property: R-Residential, C-Commercial, I-Industrial, U-Utility, F-Farm, L-Lakeshore, T-Timber, M-Mineral

Table with columns: IN WHOSE NAME ASSESSED, TO WHOM TRANSFERRED, SUBDIVISION, TRUE AND FULL VALUATIONS, ASSESSED VALUATIONS, FINAL EQUALIZED VALUE.

Table with columns: VALUATIONS BY SCHOOL DISTRICTS AS EQUALIZED BY DEPARTMENT OF TAXATION, Tax Including State Homestead, SPECIAL TAXES, TOTAL TAXES, PAID, WHEN PAID, Number of Receipt, etc.

Handwritten notes: Norma M. O'Brien, Mrs. J. H. Harrison

Handwritten notes: Willard A. Springborn, Arnold A. Matto & Merrill A. Tulander, Lon H. Jurne

Handwritten notes: L. H. Hill 1/2 int, Loren Solon 1/2 int

Handwritten note: 3196 / 3516

Handwritten note: 21.40 Abated

Handwritten note: 2140 abated

Vertical stamp: 142-29

Vertical stamp: 143-30

Vertical stamp: Edgewood

Vertical stamp: Chippewa Beach

Assessment Roll and Tax List of Real Property in the Town of Aurora #4

Indicate Type of Property: R-Residential, C-Commercial, I-Industrial, U-Utility, F-Farm, L-Lakeshore, T-Timber, M-Mineral

Form SCD MILLER-DAVIS CO., MINNAPOLIS

Main table with columns: IN WHOSE NAME ASSESSED, TO WHOM TRANSFERRED, SUBDIVISION, TRUE AND FULL VALUATIONS, ASSESSED VALUATIONS, and FINAL EQUALIZED VALUE. Includes entries for Stanley A. Peterson & Leroy A. Owick and Howard A. Richmond.

Cass County, Minnesota, for Taxes for the Year 1959.

Tax table with columns: VALUATIONS BY SCHOOL DISTRICTS AS EQUALIZED BY DEPARTMENT OF TAXATION, Tax Including State Homestead, SPECIAL TAXES, TOTAL TAXES, PAID, WHEN PAID, and REMARKS. Includes handwritten notes like '2nd HALF PAID JUL 26 1960' and 'PAID IN FULL MAR 15 1960'.

Assessment Roll and Tax List of Real Property in the Town of Umerig #4

Form SCD MILLER-DAY CO., MINNEAPOLIS

Indicate Type of Property: R-Residential, C-Commercial, I-Industrial, U-Utility, F-Farm, L-Lakeshore, T-Timber, M-Mineral

DESCRIPTION OF PROPERTY

TRUE AND FULL VALUATIONS

ASSESSED VALUATIONS

Table with columns: IN WHOSE NAME ASSESSED, TO WHOM TRANSFERRED, SUBDIVISION, Acres, 100ths, No. School District, Indicate Homestead, Indicate Agricultural, Indicate Type of Property, LAND, BUILDINGS, MACHINERY, TOTAL True and Full Value, RURAL (Homestead, Over \$4,000 and Non-Homestead), ALL OTHER (Homestead, Over \$4,000 and Non-Homestead), MACHINERY, TOTAL ASSESSED VALUE, Total Assessed Value as Equalized by the Board of Review, FINAL EQUALIZED VALUE.

143-28

143-30

Cass County, Minnesota, for Taxes for the Year 1959.

Table with columns: VALUATIONS BY SCHOOL DISTRICTS AS EQUALIZED BY DEPARTMENT OF VALUATION (District No., Rate, Mills), Tax including State Homestead, State Tax on Non-Homestead, SPECIAL TAXES, TOTAL TAXES, PAID, WHEN PAID (Month, Day, Year), Number of Receipt, March Settlement 1960, June Settlement 1960, Penalty, November Settlement 1960, Penalty, Collections to First Monday in January 1961, Penalty, Delinquent on First Monday in January 1961, Total Delinquent Tax and Penalty, REMARKS.

Belwood

Chippewa Beach

11355

11355

15769

Assessment Roll and Tax List of Real Property in the Town of Union # 4

Indicate Type of Property: R-Residential, C-Commercial, I-Industrial, U-Utility, F-Farm, L-Lakeshore, T-Timber, M-Mineral

OTM-SCD MILLER-DAVIS CO., MINNEAPOLIS

Table with columns: IN WHOSE NAME ASSESSED, TO WHOM TRANSFERRED, DESCRIPTION OF PROPERTY, TRUE AND FULL VALUATIONS, ASSESSED VALUATIONS, and FINAL EQUALIZED VALUE. Includes handwritten entries for 'D. M. Ashenbrenner' and 'Horse Island West Lot'.

17

Cass County, Minnesota, for Taxes for the Year 1959.

Table with columns: SOLD FOR TAXES, VALUATIONS BY SCHOOL DISTRICTS AS EQUALIZED BY DEPARTMENT OF TAXATION, SPECIAL TAXES, TOTAL TAXES, PAID, WHEN PAID, Number of Receipt, March Settlement 1960, June Settlement 1960, Penalty, November Settlement 1960, Collections to First Monday in January 1961, Delinquent on First Monday in January 1961, Total Delinquent Tax and Penalty, REMARKS. Includes handwritten entries for 'PAID IN FULL MAY 31 1960' and '11240'.

110

3446

68

3514

3514

Patwood

Oldpeva Beach

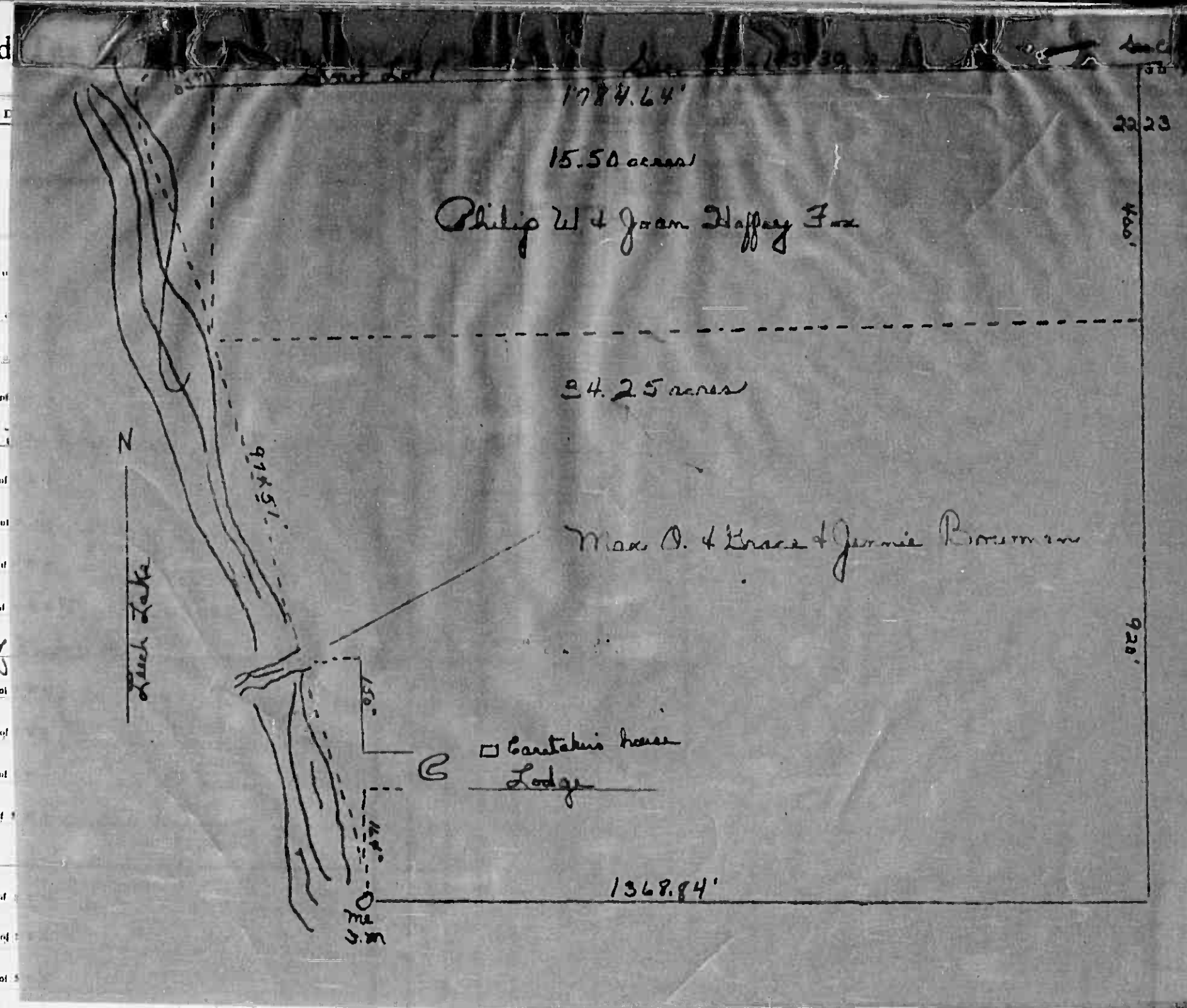
FORM SCD MILLER-DAVIS CO., MINNEAPOLIS

IN WHOSE NAME ASSESSED TO WHOM TRANSFERRED

1
2
3
4
5
6
7
8
9
10
11
12
13
14
15
16
17
18
19
20

Max O. & Grace J. Bowman & Jennie Bowman

Philip W. & Joan Haffey Fox



L-Lakeshore, T-Timber, M-Mineral

MACHINERY Attached to Real Estate 33 1/3 %		TOTAL ASSESSED VALUE	Total Assessed Value as Equalized by the Board of Review	FINAL EQUALIZED VALUE
Dollars	Dollars	Dollars	Dollars	Dollars

SOLD FOR TAXES

1
2
3
4
5
6
7
8
9
10
11
12
13
14
15
16
17
18
19
20

VALUATIONS BY SCHOOL DISTRICTS AS EQUALIZED BY DEPARTMENT OF TAXATION						Tax including State Homestead	State Tax on Non-Homestead	SPECIAL TAXES	TOTAL TAXES	PAID	WHEN PAID	Number of Receipt	March Settlement 1960	June Settlement 1960	November Settlement 1960	Penalty	Collections to First Monday in January 1961	Penalty	Delinquent on First Monday in January 1961	Total Delinquent Tax and Penalty	REMARKS	
District No.	District No.	District No.	District No.	District No.	District No.																	
						\$ cts	\$ cts	\$ cts	\$ cts		Month Day Year		\$ cts	\$ cts	\$ cts	\$ cts	\$ cts	\$ cts	\$ cts	\$ cts	\$ cts	
			700			219 34	4 36		223 70		5	PAID IN FULL JUL 18 1960	11448							223 70		Abate #8107 cancelled penalty \$4.47
			110			34 46	68		35 14		10	PAID IN FULL AUG 25 1960	162 97							35 14 87		15266
			910			258 80	5 4		258 84											258 84		

Assessment Roll and

Form SCD MILLER DAVIS CO MINNEAPOLIS

Classification of Property: R-Residential, C-Commercial, I-Industrial, U-Utility, F-Farm, L-Lakeshore, T-Timber, M-Mineral

IN WHOSE NAME ASSESSED	TO WHOM TRANSFERRED	DESCRIPTION OF PROPERTY				Acres	School District	Ind. cat. No.	Ind. cat. Type	TRUE AND FULL VALUATIONS				ASSESSED VALUATIONS							FINAL EQUALIZED VALUE	REMARKS	
		SUBDIVISION	Sec. of Lot	Town or Block	Number of Acres of Land					LAND Exclusive of Structures and Improvements	BUILDINGS and Other Structures	MACHINERY Permanently Attached to Real Estate	TOTAL True and Full Value	RURAL			ALL OTHER			TOTAL ASSESSED VALUE			Total Assessed Value as Equalized by the Board of Review
														Homestead Up to \$4,000	Over \$4,000 and Non-Homestead	Timber Land Class Bc	Homestead Up to \$4,000	Over \$4,000 and Non-Homestead	MACHINERY Permanently Attached to Real Estate				
		NE 1/4 NW 1/4			22.4330	U																	
Max O. & Grace J. Bowman & Jennie Bowman		East Lot 1 less N. 400'			34.25																		
		NE 1/4 NW 1/4																					
		NW 1/4 NW 1/4																					
		SW 1/4 NW 1/4																					
		SE 1/4 NE 1/4																					
Philip W. & Jean A. Haffey-Joe		N. 400 of East Lot 1			15.50																		
		NE 1/4 SW 1/4																					
		NW 1/4 SW 1/4																					
		SW 1/4 SW 1/4																					
		SE 1/4 SW 1/4																					
		NE 1/4 SE 1/4																					
		NW 1/4 SE 1/4																					
		SW 1/4 SE 1/4																					
		SE 1/4 SE 1/4																					

4975

Cass County, Minnesota, for Taxes for the Year 1959.

SOLD FOR TAXES	VALUATIONS BY SCHOOL DISTRICTS AS EQUALIZED BY DEPARTMENT OF TAXATION						Tax Including State Homestead	State Tax on Non-Homestead	SPECIAL TAXES	TOTAL TAXES	PAID	WHEN PAID	Number of Receipts	March Settlement 1960	June Settlement 1960	Penalty	November Settlement 1960	Penalty	Collections to First Monday in January 1961	Penalty	Delinquent on First Monday in January 1961	Total Delinquent Tax and Penalty	REMARKS
	District No.	District No.	District No.	District No.	District No.	District No.																	
	Rate	Rate	Rate	Rate	Rate	Rate																	

Fairwood Chippewa Beach

Assessment Roll and Tax List of Real Property in the Town of Tennyson #4

Form 501 MILLER-DAVIS CO., MINNEAPOLIS

Indicate Type of Property: R-Residential, C-Commercial, I-Industrial, U-Utility, F-Farm, L-Lakeshore, T-Timber, M-Mineral

Table with columns: IN WHOSE NAME ASSESSED, TO WHOM TRANSFERRED, DESCRIPTION OF PROPERTY, TRUE AND FULL VALUATIONS, ASSESSED VALUATIONS, FINAL EQUALIZED VALUE.

Table with columns: SOLD FOR TAXES, VALUATIONS BY SCHOOL DISTRICTS AS EQUALIZED BY DEPARTMENT OF TAXATION, Tax Including State Homestead, SPECIAL TAXES, TOTAL TAXES, PAID, WHEN PAID, Number of Receipt, March Settlement 1960, June Settlement 1960, November Settlement 1960, Collections to First Monday in January 1961, Delinquent on First Monday in January 1961, Total Delinquent Tax and Penalty, REMARKS.

(with next page)

22109

7958 2nd 655.14 744636 11288
622.68 62494 59.10 11288
152484 11290

Fairwood
Chippewa Beach

Form SC13 MILLER DAVIS CO., MINNEAPOLIS ^a Indicate Type of Property: R-Residential, C-Commercial

IN WHOSE NAME ASSESSED	TO WHOM TRANSFERRED	DESCRIPTION OF PROPERTY				No. School District	Indicate Homestead Tax No.	Indicate Agricultural Tax No.	Indicate Type of Property	TRUE AND FULL VALUATIONS				H. U.					
		SUBDIVISION	Sec. or Lot	Town or Block	Rdg. Number of Acres of Land					LAND Exclusive of Structures and Improvements	BUILDINGS and Other Structures	MACHINERY Permanently Attached to Real Estate	TOTAL True and Full Value		Dollars	Dollars	Dollars	Dollars	

142-25

142-28

142-30

PAGES
57

THRU
64

BLANK

DISTRICTS AS LISTED IN TAXATION			Tax including State Homestead	State Tax on Non-Homestead	SPECIAL TAXES	TOTAL TAXES	PAID	WHEN PAID	Number of Receipts	March Settlement 1960	June Settlement 1960	Penalty	November Settlement 1960	Penalty	Collections to First Monday in January 1961	Penalty	Delinquent on First Monday in January 1961	Total Delinquent Tax and Penalty	REMARKS		
District No.	District No.	District No.																			

Fairwood City pwa Beach

Assessment Roll and Tax List of Real Property in the Town of Union #4

Form 50 - HICKER-DAVIS CO., MINNEAPOLIS

Indicate Type of Property: R-Residential, C-Commercial, I-Industrial, U-Utility, F-Farm, L-Lakeshore, T-Timber, M-Mineral

Table with columns: IN WHOSE NAME ASSESSED, TO WHOM TRANSFERRED, DESCRIPTION OF PROPERTY, TRUE AND FULL VALUATIONS, ASSESSED VALUATIONS, FINN EQUALIZED VALUE.

Robert Knutson

Balance of Plat of Fairwood has been vacated

Cass County, Minnesota, for Taxes for the Year 1959.

Table with columns: SOLD FOR TAXES, VALUATIONS BY SCHOOL DISTRICTS AS EQUALIZED BY DEPARTMENT OF TAXATION, Tax including State Homestead, State Tax on Non-Homestead, SPECIAL TAXES, TOTAL TAXES, PAID, WHEN PAID, Number of Receipt, March Settlement 1960, June Settlement 1960, November Settlement 1960, Penalty, Collections to First Monday in January 1961, Delinquent on First Monday in January 1961, Total Delinquent Tax and Penalty, REMARKS.

Chilpewa Beach

Assessment Roll and Tax List of Real Property in the Town of Aurora #4

Indicate Type of Property: R-Residential, C-Commercial, I-Industrial, U-Utility, F-Farm, L-Lakeshore, T-Timber, M-Mineral

Form 50 MILLER-DAVIS CO., MINNEAPOLIS

DESCRIPTION OF PROPERTY

TRUE AND FULL VALUATIONS

ASSESSED VALUATIONS

FINAL EQUALIZED VALUE

Table with columns: IN WHOSE NAME ASSESSED, TO WHOM TRANSFERRED, SUBDIVISION, Sec. or Lot, Town or Block, Reg. Number of Acres of Land, No. School District, Indicate Homestead, Indicate Agricultural, Indicate Type of Property

Table with columns: LAND Exclusive of Structures and Improvements, BUILDINGS and Other Structures, MACHINERY Permanently Attached to Real Estate, TOTAL True and Full Value, RURAL Homesteaded Up to \$4,000 20%, Over \$4,000 and Non-Homestead 33 1/3%, Timber Land Class B 20%, ALL OTHER Homesteaded Up to \$4,000 25%, Over \$4,000 and Non-Homestead 40%, MACHINERY Permanently Attached to Real Estate 33 1/3%

Table with columns: TOTAL ASSESSED VALUE, Total Assessed Value as Equalized by the Board of Review

Table with columns: TAXES

Table with columns: Tax Including State Homestead, State Tax on Non-Homesteaded

Table with columns: SPECIAL TAXES, TOTAL TAXES, PAID, WHEN PAID

Table with columns: Number of Receipt, March Settlement 1960, June Settlement 1960, Penalty, November Settlement 1960, Penalty, Collections to First Monday in January 1961, Penalty, Delinquent on First Monday in January 1961, Total Delinquent Tax and Penalty

Table with columns: REMARKS

Cass County, Minnesota, for Taxes for the Year 1959.

Main tax list table with columns: SOLD FOR TAXES, VALUATIONS BY SCHOOL DISTRICTS AS EQUALIZED BY DEPARTMENT OF TAXATION, Tax Including State Homestead, State Tax on Non-Homesteaded, SPECIAL TAXES, TOTAL TAXES, PAID, WHEN PAID, Number of Receipt, March Settlement 1960, June Settlement 1960, Penalty, November Settlement 1960, Penalty, Collections to First Monday in January 1961, Penalty, Delinquent on First Monday in January 1961, Total Delinquent Tax and Penalty, REMARKS

