

Assessment & Tax, 1914-1915

Union, No. 1

INDEX TO SECTIONS

SECTION	PAGE
Sec. 1	
" 2	
" 3	
" 4	
" 5	
" 6	
" 7	
" 8	
" 9	
" 10	
" 11	
" 12	
" 13	
" 14	
" 15	
" 16	
" 17	
" 18	
" 19	
" 20	
" 21	
" 22	
" 23	
" 24	
" 25	
" 26	
" 27	
" 28	
" 29	
" 30	
" 31	
" 32	
" 33	
" 34	
" 35	
" 36	

For Convenience of Auditor in Showing Boundaries of School Districts

Township No. Unorg Range No. # 4 Mer. P. M.

0	5				
7	8	9	10	11	12
13	14	15	16	17	18
19	20	21	22	23	24
25	26	27	28	29	30
31	32	33	34	35	36

Unorganized # 4 contains  
Townships as follows -

All of 142-25 in Sch Dist # 118

142-29 (except Sec. in Un  
25-36)

142-29 (except eastern  
part which is  
attached to School in Un  
township)

143-30 (except Sec. 31-32  
except Sec. 3-4-5-6  
7-8-9-18+19 in Un)

143-30 - Sec. 31+32 in # 119

143-30 Sec 3-4-5-6  
7-8-9-18+19 } in # 115  
became # 3 on  
8/22/52

Returns Showing Grain Received in or Handled by Elevators, Warehouses and Mills in the \_\_\_\_\_ of \_\_\_\_\_ in the  
County of \_\_\_\_\_ for the Year Ending May 1, 1958.

NAMES OF OWNERS	ADDRESS	Bushels of Wheat	Bushels of Soy Beans	Bushels of Flax	Total No. of Bushels of Wheat, Soy Beans and Flax	★ Tax of 1/4 Mill per Bushel		Bushels of Corn	Bushels of Barley	Bushels of Rye	Bushel of Oats	Bushels of Buckwheat	Bushels of all Other Grains	Total No. Bushels Corn, Barley, Rye, Oats, Buckwheat and all Other Grains	★ Tax of 1/4 Mill Per Bushel		★ Total Tax		REMARKS		
						Dollars	Cts.								Dollars	Cts.	Dollars	Cts.			

Note ★ Assessors will not fill these Columns

SUMMARY OF TAX COLLECTION

Original Levy	-	-	-	-	-	\$ 8611.24	
Additions	-	-	-	-	-	\$ 16.44	
							\$ 8627.68
Abatements	-	-	-	-	-	\$	
							\$ 8627.68

COLLECTIONS

March Settlement	=	-	-	-	-	\$ 893.73	
June Settlement	-	-	-	-	-	\$ 3917.89	
November Settlement	-	-	-	-	-	\$ 1932.83	
January Settlement	-	-	-	-	-	\$ 361.76	\$ 7113.21
							\$
Over Collected	-	-	-	-	-	\$	
Under Collected	-	-	-	-	-	\$	
Delinquent	-	-	-	-	-	\$ 1514.47	\$ 1514.47
Total	-	-	-	-	-	\$ 8627.68	

Real Estate

Chippewa Beach







Assessment Roll and Tax List of Real Property in the Town of Young #4

Indicate Type of Property: R-Residential, C-Commercial, I-Industrial, U-Utility, F-Farm, L-Lakeshore, T-Timber, M-Mineral

Cass County, Minnesota, for Taxes for the Year 1958.

Table with columns: IN WHOSE NAME ASSESSED, TO WHOM TRANSFERRED, DESCRIPTION OF PROPERTY, TRUE AND FULL VALUATIONS, ASSESSED VALUATIONS, FINAL EQUALIZED VALUE.

Table with columns: VALUATIONS BY SCHOOL DISTRICTS AS EQUALIZED BY DEPARTMENT OF TAXATION, TAXES, PAID, WHEN PAID, Number of Receipt, March Settlement, June Settlement, Penalty, November Settlement, Penalty, Collections to First Monday in January 1960, Delinquent on First Monday in January 1960, Total Delinquent Tax and Penalty, REMARKS.

Vertical text on the right edge of the page.

Assessment Roll and Tax List of Real Property in the Town of Ureng # 4

Indicate Type of Property: R-Residential, C-Commercial, I-Industrial, U-Utility, F-Farm, L-Lakeshore, T-Timber, M-Mineral

Cass County, Minnesota, for Taxes for the Year 1958.

Real 14-35

IN WHOSE NAME ASSESSED	TO WHOM TRANSFERRED	DESCRIPTION OF PROPERTY				No. School District	Indicate Homestead Yes or No	Indicate Agricultural Tax or No	Indicate Type of Property	TRUE AND FULL VALUATIONS						TOTAL ASSESSED VALUE	Total Assessed Value as Equalized by the Board of Review	FINAL EQUALIZED VALUE					
		SUBDIVISION	Sec. or Lot	Town or Block	Rsg.					Number of Acres of Land	MACHINERY Permanently Attached to Real Estate	RURAL		ALL OTHER									
												LAND Exclusive of Structures and Improvements	BUILDINGS and Other Structures	TOTAL Trng and Full Value	Homestead Up to \$4,000 20%				Over \$4,000 and Non-Homestead 33 1/3%	Timber Land Class 3e 20%	Homestead Up to \$1,000 25%	Over \$4,000 and Non-Homestead 40%	MACHINERY Permanently Attached to Real Estate 33 1/3%
															Dollars				Dollars	Dollars	Dollars	Dollars	Dollars
State of Minnesota		NW 1/4 of NE 1/4	3	142	25																		
State of Minnesota		NW 1/4 of NE 1/4																					
State of Minnesota		SW 1/4 of NE 1/4																					
State of Minnesota		SE 1/4 of NE 1/4																					
State of Minnesota																							
State of Minnesota		NE 1/4 of NW 1/4																					
U. S. of America		NW 1/4 of NW 1/4																					
U. S. of America		SW 1/4 of NW 1/4																					
U. S. of America		SE 1/4 of NW 1/4																					
U. S. of America		NE 1/4 of SW 1/4																					
U. S. of America		NW 1/4 of SW 1/4																					
U. S. of America		SW 1/4 of SW 1/4																					
State of Minnesota		SE 1/4 of SW 1/4																					
U. S. of America		NE 1/4 of SE 1/4																					
U. S. of America		NW 1/4 of SE 1/4																					
State of Minnesota		SW 1/4 of SE 1/4																					
State of Minnesota		SE 1/4 of SE 1/4																					

SOLD FOR TAXES	VALUATIONS BY SCHOOL DISTRICTS AS EQUALIZED BY DEPARTMENT OF TAXATION						Tax including State Homestead	State Tax on Non-Homestead	SPECIAL TAXES	TOTAL TAXES	PAID	WHEN PAID	Number of Receipt	March Settlement 1959	June Settlement 1959	Penalty	November Settlement 1959	Penalty	Collections to First Monday in January 1960	Penalty	Delinquent on First Monday in January 1960	Total Delinquent Tax and Penalty	REMARKS			
	District No.	District No.	District No.	District No.	District No.	District No.																				
	Rate..... Mills	Rate..... Mills	Rate..... Mills	Rate..... Mills	Rate..... Mills	Rate..... Mills																				
1																										
2																										
3																										
4																										
5																										
6																										
7																										
8																										
9																										
10																										
11																										
12																										
13																										
14																										
15																										
16																										
17																										
18																										
19																										
20																										

14-36

14-30

Minnod

Chap. 278, Sec. 1



# Assessment Roll and Tax List of Real Property in the Town of Young #4

\* Indicate Type of Property: R-Residential, C-Commercial, I-Industrial, U-Utility, F-Farm, L-Lakeshore, T-Timber, M-Mineral

Cass County, Minnesota, for Taxes for the Year 1958.

1958-59

IN WHOSE NAME ASSESSED	TO WHOM TRANSFERRED	SUBDIVISION	Sec. or Lot	Town or Block	Reg.	Number of Acres of Land Acres 100ths	No. School District	Indicate Irrigated Yes or No	Indicate Agricultural Yes or No	Indicate Type of Property	TRUE AND FULL VALUATIONS					ASSESSED VALUATIONS					FINAL EQUALIZED VALUE Dollars	SOLD FOR TAXES	VALUATIONS BY SCHOOL DISTRICTS AS EQUALIZED BY DEPARTMENT OF TAXATION						SPECIAL TAXES	TOTAL TAXES	PAID	WHEN PAID Month Day Year	Number of Receipt	March Settlement 1959	June Settlement 1959	Penalty	November Settlement 1959	Penalty	Collections to First Monday in January 1960	Penalty	Delinquent on First Monday in January 1960	Total Delinquent Tax and Penalty	REMARKS				
											LAND Exclusive of Structures and Improvements Dollars	BUILDINGS and Other Structures Dollars	MACHINERY Permanently Attached to Real Estate Dollars	TOTAL True and Full Value Dollars	RURAL			ALL OTHER		MACHINERY Permanently Attached to Real Estate Dollars			TOTAL ASSESSED VALUE Dollars	Total Assessed Value as Equalized by the Board of Review Dollars	District No.	District No.	District No.	District No.																District No.	Tax including State Homestead Dollars	State Tax on Non-Homestead Mills	
															Homestead Up to \$4,000 20%	Over \$4,000 and Non-Homestead 33 1/8%	Timber Land Class 3c 20%	Homestead Up to \$4,000 25%	Over \$4,000 and Non-Homestead 40%						Rate	Rate	Rate	Rate																Rate			Rate
															Mills	Mills	Mills	Mills	Mills						Mills	Mills	Mills	Mills																Mills			Mills
U. S. of America		<u>N4 1/2 Sec 25 Lot 1</u>				<u>4 14 25</u>	<u>118</u>																																								
U. S. of America		<u>N4 1/2 Sec 25 Lot 2</u>																																													
U. S. of America		<u>S 1/2 Sec 25</u>																																													
U. S. of America		<u>SE 1/4 Sec 25</u>																																													
U. S. of America		<u>N4 1/2 Sec 25 Lot 3</u>																																													
U. S. of America		<u>N 1/2 Sec 25 Lot 4</u>																																													
U. S. of America		<u>S 1/2 Sec 25</u>																																													
U. S. of America		<u>SE 1/4 Sec 25</u>																																													
U. S. of America		<u>NE 1/4 Sec 25</u>																																													
U. S. of America		<u>NW 1/4 Sec 25</u>																																													
U. S. of America		<u>SW 1/4 Sec 25</u>																																													
U. S. of America		<u>SE 1/4 Sec 25</u>																																													

1958-59







Assessment Roll and Tax List of Real Property in the Town of Umrog #4

\* Indicate Type of Property: R-Residential, C-Commercial, I-Industrial, U-Utility, F-Farm, L-Lakeshore, T-Timber, M-Mineral

Cass County, Minnesota, for Taxes for the Year 1958.

IN WHOSE NAME ASSESSED	TO WHOM TRANSFERRED	DESCRIPTION OF PROPERTY			No. School District	Indicate Homestead Yes or No	Indicate Agricultural Yes or No	Indicate Type of Property	TRUE AND FULL VALUATIONS			ASSESSED VALUATIONS						FINAL EQUALIZED VALUE	SOLD FOR TAXES	VALUATIONS BY SCHOOL DISTRICTS AS EQUALIZED BY DEPARTMENT OF TALLATION						PAID	WHEN PAID	Number of Receipts	March Settlement 1959	June Settlement 1959	November Settlement 1959	Penalty	Collections to First Monday in January 1960	Penalty	Delinquent on First Monday in January 1960	Total Delinquent Tax and Penalty	REMARKS	
		SUBDIVISION	Sec. or Lot	Town or Block					Reg.	Number of Acres of Land	LAND Exclusive of Structures and Improvements	BUILDINGS and Other Structures	MACHINERY Permanently Attached to Real Estate	TOTAL True and Full Value	RURAL Homestead Up to \$4,000 20%	Over \$4,000 and Non-Homestead 33 1/8%	Timber Land Class 3c 20%			ALL OTHER Homestead Up to \$4,000 25%	Over \$4,000 and Non-Homestead 40%	MACHINERY Permanently Attached to Real Estate 33 1/8%	TOTAL ASSESSED VALUE	Total Assessed Value as Equalized by the Board of Review	District No. Rate													District No. Rate
U. S. of America		NEW of NE 1/4																																				
U. S. of America		NW 1/4 of NE 1/4																																				
U. S. of America		SW 1/4 of NE 1/4																																				
U. S. of America		SE 1/4 of NE 1/4																																				
U. S. of America		NE 1/2 of NW 1/4																																				
State of Minnesota		NW 1/4 of NW 1/4																																				
State of Minnesota		SW 1/4 of NW 1/4																																				
U. S. of America		SE 1/4 of NW 1/4																																				
U. S. of America		NW 1/4 of SW 1/4																																				
State of Minnesota		NW 1/4 of SW 1/4																																				
State of Minnesota		SW 1/4 of SW 1/4																																				
U. S. of America		SE 1/4 of SW 1/4																																				
Milton Larry		NE 1/4 of SE 1/4			40						101				201																							
H. J. Dewitt	Timothy T. Dewitt	NW 1/4 of SE 1/4			40						201				201																							
"	"	SW 1/4 of SE 1/4 Lot 2			39.55						201				201																							
State of Minnesota		SE 1/4 of SE 1/4 Lot 1																																				
					119.55						603				603																							

143-36  
143-30  
Minnesota  
Chipewagon Beach

13571









Assessment Roll and Tax List of Real Property in the Town of Union # 4

Cass County, Minnesota, for Taxes for the Year 1958.

Table with columns: IN WHOSE NAME ASSESSED, TO WHOM TRANSFERRED, DESCRIPTION OF PROPERTY, TRUE AND FULL VALUATIONS, ASSESSED VALUATIONS, and FINAL EQUALIZED VALUE.

Table with columns: VALUATIONS BY SCHOOL DISTRICTS AS EQUALIZED BY DEPARTMENT OF TAXATION, Tax including State Homestead, State Tax on Non-Homestead, SPECIAL TAXES, TOTAL TAXES, PAID, WHEN PAID, Number of Receipts, March Settlement 1959, June Settlement 1959, November Settlement 1959, Delinquent on First Monday in January 1960, Total Delinquent Tax and Penalty, and REMARKS.

Real 14-38

Real 14-38

Assessment Roll and Tax List of Real Property in the Town of *Umoog #4*

Cass County, Minnesota, for Taxes for the Year 1958.

Form SCD 1-2-56-10

\* Indicate Type of Property: R-Residential, C-Commercial, I-Industrial, U-Utility, F-Farm, L-Lakeshore, T-Timber, M-Mineral

Table with columns: IN WHOSE NAME ASSESSED, TO WHOM TRANSFERRED, DESCRIPTION OF PROPERTY, TRUE AND FULL VALUATIONS, ASSESSED VALUATIONS, and FINAL EQUALIZED VALUE. Includes handwritten entries for property descriptions and valuations.

Table with columns: VALUATIONS BY SCHOOL DISTRICTS AS EQUALIZED BY DEPARTMENT OF TAXATION, TAXES, PAID, WHEN PAID, and other financial details. Includes handwritten entries for tax amounts and payment dates.

Assessment Roll and Tax List of Real Property in the Town of Union #4, Cass County, Minnesota, for Taxes for the Year 1958. Indicate Type of Property: R-Residential, C-Commercial, I-Industrial, U-Utility, F-Farm, L-Lakeshore, T-Timber, M-Mineral

Cass County, Minnesota, for Taxes for the Year 1958.

Table with columns: IN WHOSE NAME ASSESSED, TO WHOM TRANSFERRED, DESCRIPTION OF PROPERTY (SUBDIVISION, Sec. of Lot, Town or Block, Rng., Number of Acres of Land), TRUE AND FULL VALUATIONS (LAND, BUILDINGS, MACHINERY, RURAL, ALL OTHER, MACHINERY), ASSESSED VALUATIONS (HOMESTEAD, OVER \$4,000, TIMBER, OVER \$4,000, MACHINERY), TOTAL ASSESSED VALUE, SOLD FOR TAXES, FINAL EQUALIZED VALUE.

Table with columns: VALUATIONS BY SCHOOL DISTRICTS AS EQUALIZED BY DEPARTMENT OF TAXATION (District No., Rate), Tax including State Homestead, State Tax on Non-Homestead, SPECIAL TAXES, TOTAL TAXES, PAID, WHEN PAID, Number of Receipt, March Settlement 1959, June Settlement 1959, Penalty, November Settlement 1959, Penalty, Collections to First Monday in January 1960, Penalty, Delinquent on First Monday in January 1960, Total Delinquent Tax and Penalty, REMARKS.

Assessment Roll and Tax List of Real Property in the Town of Young #4

Cass County, Minnesota, for Taxes for the Year 1958.

Indicate Type of Property: R-Residential, C-Commercial, I-Industrial, U-Utility, F-Farm, L-Lakeshore, T-Timber, M-Mineral

Table with columns: IN WHOSE NAME ASSESSED, TO WHOM TRANSFERRED, SUBDIVISION, TRUE AND FULL VALUATIONS, ASSESSED VALUATIONS, FINAL EQUALIZED VALUE.

Table with columns: VALUATIONS BY SCHOOL DISTRICTS AS EQUALIZED BY DEPARTMENT OF TALLATION, TAXES, PAID, WHEN PAID, Number of Receipts, March Settlement, June Settlement, November Settlement, Collections to First Monday in January 1960, Delinquent on First Monday in January 1960, Total Delinquent Tax and Penalty, REMARKS.

Real 1-3-38

Real 1-3-38

MINNESOTA CHILDREN'S BENEFIT

Assessment Roll and Tax List of Real Property in the Town of Union #4

\* Indicate Type of Property: R-Residential, C-Commercial, I-Industrial, U-Utility, F-Farm, L-Lakeshore, T-Timber, M-Mineral

Cass County, Minnesota, for Taxes for the Year 1958.

Form 500

IN WHOSE NAME ASSESSED

TO WHOM TRANSFERRED

DESCRIPTION OF PROPERTY

SUBDIVISION Sec. or Lot Town or Block Rng. Number of Acres of Land

TRUE AND FULL VALUATIONS

ASSESSED VALUATIONS

LAND EXCLUSIVE OF STRUCTURES AND IMPROVEMENTS BUILDINGS AND OTHER STRUCTURES MACHINERY PERMANENTLY ATTACHED TO REAL ESTATE TOTAL TRUE AND FULL VALUE

RURAL ALL OTHER MACHINERY PERMANENTLY ATTACHED TO REAL ESTATE TOTAL ASSESSED VALUE

Total Assessed Value as Equalized by the Board of Review FINAL EQUALIZED VALUE

SOLD FOR TAXES

VALUATIONS BY SCHOOL DISTRICTS AS EQUALIZED BY DEPARTMENT OF TAXATION

District No. District No. District No. District No. District No. District No.

Tax Including State Homestead

State Tax on Non-Homestead

SPECIAL TAXES

TOTAL TAXES

PAID

WHEN PAID

Number of Receipt

March Settlement 1959

June Settlement 1959

Penalty

November Settlement 1959

Penalty

Collections to First Monday in January 1960

Penalty

Delinquent on First Monday in January 1960

Total Delinquent Tax and Penalty

REMARKS

U. S. of America

1

NE 1/4 of NE 1/4

15 142 25

U. S. of America

2

NW 1/4 of NE 1/4

U. S. of America

3

SW 1/4 of NE 1/4

U. S. of America

4

SE 1/4 of NE 1/4

U. S. of America

6

NE 1/4 of NW 1/4

U. S. of America

7

NW 1/4 of NW 1/4

U. S. of America

8

SW 1/4 of NW 1/4

U. S. of America

9

SE 1/4 of NW 1/4

U. S. of America

11

NE 1/4 of SW 1/4

U. S. of America

12

NW 1/4 of SW 1/4

U. S. of America

13

SW 1/4 of SW 1/4

U. S. of America

14

SE 1/4 of SW 1/4

U. S. of America

16

NE 1/4 of SE 1/4

U. S. of America

17

NW 1/4 of SE 1/4

U. S. of America

18

SW 1/4 of SE 1/4

U. S. of America

19

SE 1/4 of SE 1/4

20

1

2

3

4

5

6

7

8

9

10

11

12

13

14

15

16

17

18

19

20

1

2

3

4

5

6

7

8

9

10

11

12

13

14

15

16

17

18

19

20

Real 143-35

143-30

143-30

143-30

143-30

143-30

143-30

143-30

143-30

Assessment Roll and Tax List of Real Property in the Town of Union #4, of Union #4  
 \* Indicate Type of Property: R-Residential, C-Commercial, I-Industrial, U-Utility, F-Farm, L-Lakeshore, T-Timber, M-Mineral

Cass County, Minnesota, for Taxes for the Year 1958.

Form 3 CD

IN WHOSE NAME ASSESSED	TO WHOM TRANSFERRED	DESCRIPTION OF PROPERTY			No. School District	Indicate Homestead Yes or No	Indicate Agricultural Yes or No	Indicate Type of Property	TRUE AND FULL VALUATIONS						TOTAL ASSESSED VALUE	Total Assessed Value as Equalized by the Board of Review	FINAL EQUALIZED VALUE					
		SUBDIVISION	Sec. or Lot	Twp. or Block					Rng.	Number of Acres of Land	LAND Exclusive of Structures and Improvements	BUILDINGS and Other Structures	MACHINERY Permanently Attached to Real Estate	RURAL				ALL OTHER		MACHINERY Permanently Attached to Real Estate		
														Homestead Up to \$4,000 20%				Over \$4,000 and Non-Homestead 33 1/3%	Timber Land Class 3e 20%		Homestead Up to \$4,000 25%	Over \$4,000 and Non-Homestead 40%
State of Minnesota																						
State of Minnesota																						
State of Minnesota																						
State of Minnesota																						
State of Minnesota																						
State of Minnesota																						
State of Minnesota																						
State of Minnesota																						
State of Minnesota																						
State of Minnesota																						
State of Minnesota																						
State of Minnesota																						
State of Minnesota																						
State of Minnesota																						
State of Minnesota																						
State of Minnesota																						
State of Minnesota																						
State of Minnesota																						
State of Minnesota																						
State of Minnesota																						
State of Minnesota																						
State of Minnesota																						
State of Minnesota																						
State of Minnesota																						

Poland M. Hicks

Lot 1

Lot 2

SOLD FOR TAXES	VALUATIONS BY SCHOOL DISTRICTS AS EQUALIZED BY DEPARTMENT OF TAXATION						Tax including State Homestead	State Tax on Non-Homestead	SPECIAL TAXES	TOTAL TAXES	PAID	WHEN PAID	Number of Receipt	March Settlement 1959	June Settlement 1959	Penalty	November Settlement 1959	Penalty	Collections to First Monday in January 1960	Penalty	Delinquent on First Monday in January 1960	Total Delinquent Tax and Penalty	REMARKS
	District No.	District No.	District No.	District No.	District No.	District No.																	
	Rate	Rate	Rate	Rate	Rate	Rate																	
	Mills	Mills	Mills	Mills	Mills	Mills																	
1																							
2																							
3																							
4																							
5																							
6																							
7									70		17 10	46	17 56										12551
8																							
9																							
10																							
11																							
12																							
13																							
14																							
15																							
16																							
17																							
18																							
19																							
20																							

PAID IN FULL MAY 18 1959 8960

17 56

12551









Assessment Roll and Tax List of Real Property in the *Town of Union # 4*

Indicate Type of Property: R-Residential, C-Commercial, I-Industrial, U-Utility, F-Farm, L-Lakeshore, T-Timber, M-Mineral

Cass County, Minnesota, for Taxes for the Year 1958.

Form 300-35 (1-1-58)

IN WHOSE NAME ASSESSED	TO WHOM TRANSFERRED	DESCRIPTION OF PROPERTY				No. of School District	Indicate Homestead or No	Indicate Agricultural Tax No	Indicate Type of Property	TRUE AND FULL VALUATIONS			ASSESSED VALUATIONS					FINAL EQUALIZED VALUE				
		SUBDIVISION	Sec. or Lot	Town or Block	Rng.					Number of Acres of Land	LAND Exclusive of Structures and Improvements	BUILDINGS and Other Structures	MACHINERY Permanently Attached to Real Estate	TOTAL True and Full Value	R U R A L		ALL OTHER		MACHINERY Permanently Attached to Real Estate	TOTAL ASSESSED VALUE	Total Assessed Value as Equalized by the Board of Review	
															Acres	100ths	Homestead Up to \$4,000 20%					Over \$4,000 and Non-Homestead 33 1/3%
U. S. of America																						

SOLD FOR TAXES	VALUATIONS BY SCHOOL DISTRICTS AS EQUALIZED BY DEPARTMENT OF TAXATION						Tax including State Homestead	State Tax on Non-Homestead	SPECIAL TAXES	TOTAL TAXES	PAID	WHEN PAID	Number of Receipt	March Settlement 1959	June Settlement 1959	Penalty	November Settlement 1959	Penalty	Collections to First Monday in January 1960	Penalty	Delinquent on First Monday in January 1960	Total Delinquent Tax and Penalty	REMARKS
	District No.	District No.	District No.	District No.	District No.	District No.																	
	Rate	Rate	Rate	Rate	Rate	Rate																	

Real 142-35

62-2-30  
42-30  
MAY 1964  
Chipewa Beach

Assessment Roll and Tax List of Real Property in the Town of Union #4

Cass County, Minnesota, for Taxes for the Year 1958.

Indicate Type of Property: R-Residential, C-Commercial, I-Industrial, U-Utility, F-Farm, L-Lakeshore, T-Timber, M-Mineral

Table with columns for IN WHOSE NAME ASSESSED, TO WHOM TRANSFERRED, DESCRIPTION OF PROPERTY, TRUE AND FULL VALUATIONS, ASSESSED VALUATIONS, VALUATIONS BY SCHOOL DISTRICTS AS EQUALIZED BY DEPARTMENT OF TAXATION, SOLD FOR TAXES, PAID, WHEN PAID, and REMARKS.

Real 14-25

14-29

14-30

Minnesota Chippewa Beach



Assessment Roll and Tax List of Real Property in the Town of Young #4

Cass County, Minnesota, for Taxes for the Year 1958.

Table with columns: IN WHOSE NAME ASSESSED, TO WHOM TRANSFERRED, DESCRIPTION OF PROPERTY, TRUE AND FULL VALUATIONS, ASSESSED VALUATIONS, VALUATIONS BY SCHOOL DISTRICTS AS EQUALIZED BY DEPARTMENT OF TAXATION, TAXES, PAID, WHEN PAID, Number of Receipt, March Settlement 1959, June Settlement 1959, November Settlement 1959, Collections to First Monday in January 1960, Delinquent on First Monday in January 1960, Total Delinquent Tax and Penalty, REMARKS.

Real 142-25

142-29

142-30

Assessed Chippewa Beach

Assessment Roll and Tax List of Real Property in the Town of Union #4

Cass County, Minnesota, for Taxes for the Year 1958.

Form 800-11-1-58

Indicate Type of Property: R-Residential, C-Commercial, I-Industrial, U-Utility, F-Farm, L-Lakeshore, T-Timber, M-Mineral

Table with columns: IN WHOSE NAME ASSESSED, TO WHOM TRANSFERRED, DESCRIPTION OF PROPERTY, TRUE AND FULL VALUATIONS, ASSESSED VALUATIONS, VALUATIONS BY SCHOOL DISTRICTS AS EQUALIZED BY DEPARTMENT OF TAXATION, SOLD FOR TAXES, PAID, WHEN PAID, Number of Receipt, March Settlement 1959, June Settlement 1959, November Settlement 1959, Collection to First Monday in January 1960, Delinquent on First Monday in January 1960, Total Delinquent Tax and Penalty, REMARKS.

Assessment Roll and Tax List of Real Property in the Town of Union #4

Cass County, Minnesota, for Taxes for the Year 1958.

Table with columns: IN WHOSE NAME ASSESSED, TO WHOM TRANSFERRED, DESCRIPTION OF PROPERTY, TRUE AND FULL VALUATIONS, ASSESSED VALUATIONS, VALUATIONS BY SCHOOL DISTRICTS AS EQUALIZED BY DEPARTMENT OF TAXATION, SOLD FOR TAXES, PAID, WHEN PAID, Number of Receipt, March Settlement 1959, June Settlement 1959, Penalty, November Settlement 1959, Penalty, Collections to First Monday in January 1960, Penalty, Delinquent on First Monday in January 1960, Total Delinquent Tax and Penalty, REMARKS.

Assessment Roll and Tax List of Real Property in the Town of Young #4

Cass County, Minnesota, for Taxes for the Year 1958

Form 300 (REV. 5-15-57)

\* Indicate Type of Property: R-Residential, C-Commercial, I-Industrial, U-Utility, F-Farm, L-Lakeshore, T-Timber, M-Mineral

Table with columns: IN WHOSE NAME ASSESSED, TO WHOM TRANSFERRED, DESCRIPTION OF PROPERTY, TRUE AND FULL VALUATIONS, ASSESSED VALUATIONS, VALUATIONS BY SCHOOL DISTRICTS AS EQUALIZED BY DEPARTMENT OF TAXATION, TAXES, PAID, WHEN PAID, Number of Receipt, March Settlement 1959, June Settlement 1959, November Settlement 1959, Penalty, Collections to First Monday in January 1960, Delinquent on First Monday in January 1960, Total Delinquent Tax and Penalty, REMARKS.

Real 10-30

4-2-59

4-3-30

Patrol

Chippewa Beach



Assessment Roll and Tax List of Real Property in the Town of Zumbro #4

Indicate Type of Property: R-Residential, C-Commercial, I-Industrial, U-Utility, F-Farm, L-Lakeshore, T-Timber, M-Mineral

Cass County, Minnesota, for Taxes for the Year 1958.

Table with columns: IN WHOSE NAME ASSESSED, TO WHOM TRANSFERRED, DESCRIPTION OF PROPERTY, TRUE AND FULL VALUATIONS, ASSESSED VALUATIONS, VALUATIONS BY SCHOOL DISTRICTS AS EQUALIZED BY DEPARTMENT OF TAXATION, TAXES, PAID, WHEN PAID, Number of Receipt, March Settlement 1959, June Settlement 1959, Penalty, November Settlement 1959, Penalty, Collections to First Monday in January 1960, Penalty, Delinquent on First Monday in January 1960, Total Delinquent Tax and Penalty, REMARKS.

Assessment Roll and Tax List of Real Property in the Town of Union # 4

Cass County, Minnesota, for Taxes for the Year 1958.

Form 300... Indicate Type of Property: R-Residential, C-Commercial, I-Industrial, U-Utality, F-Farm, L-Lakeshore, T-Timber, M-Mineral

Table with columns: IN WHOSE NAME ASSESSED, TO WHOM TRANSFERRED, DESCRIPTION OF PROPERTY, TRUE AND FULL VALUATIONS, ASSESSED VALUATIONS, FINAL EQUALIZED VALUE.

Table with columns: VALUATIONS BY SCHOOL DISTRICTS AS EQUALIZED BY DEPARTMENT OF TAXATION, SOLD FOR TAXES, SPECIAL TAXES, TOTAL TAXES, PAID, WHEN PAID, etc.

29

45-30

Internal

Clipboard Beach

Assessment Roll and Tax List of Real Property in the Town of Union #4

Indicate Type of Property: R-Residential, C-Commercial, I-Industrial, U-Utility, F-Farm, L-Lakeshore, T-Timber, M-Mineral

Table with columns: IN WHOSE NAME ASSESSED, TO WHOM TRANSFERRED, DESCRIPTION OF PROPERTY, TRUE AND FULL VALUATIONS, ASSESSED VALUATIONS, FINAL EQUALIZED VALUE.

Cass County, Minnesota, for Taxes for the Year 1958.

Table with columns: SOLD FOR TAXES, VALUATIONS BY SCHOOL DISTRICTS AS EQUALIZED BY DEPARTMENT OF TAXATION, Tax including State Homestead, State Tax on Non-Homestead, SPECIAL TAXES, TOTAL TAXES, PAID, WHEN PAID, Number of Receipts, March Settlement 1959, June Settlement 1959, November Settlement 1959, Collections to First Monday in January 1960, Delinquent on First Monday in January 1960, Total Delinquent Tax and Penalty, REMARKS.



Indicate Type of Property: R-Residential, C-Commercial, I-Industrial, U-Utility, F-Farm, L-Lakeshore, T-Timber, M-Mineral

Table with columns: IN WHOSE NAME ASSESSED, TO WHOM TRANSFERRED, DESCRIPTION OF PROPERTY (SUBDIVISION, Sec of Lot, Town of Block, No. of Acres), TRUE AND FULL VALUATIONS (LAND, BUILDINGS, MACHINERY, TOTAL), ASSESSED VALUATIONS (RURAL, ALL OTHER, MACHINERY, TOTAL ASSESSED), and FINAL EQUALIZED VALUE.

Table with columns: SOLD FOR TAXES, VALUATIONS BY SCHOOL DISTRICTS AS EQUALIZED BY DEPARTMENT OF TAXATION (District No., Rate, etc.), SPECIAL TAXES, TOTAL TAXES, PAID, WHEN PAID, March Settlement, June Settlement, November Settlement, Collections to First Monday in January, Delinquent on First Monday in January, Total Delinquent Tax and Penalty, REMARKS.

Vertical text on the right edge of the page: 42-29, 43-30, Municipal Ordinance Book

Assessment Roll and Tax List of Real Property in the Year of 1958 # 4

Cass County, Minnesota, for Taxes for the Year 1958.

Indicate Type of Property: R-Residential, C-Commercial, I-Industrial, U-Utility, F-Farm, L-Lakeshore, T-Timber, M-Mineral

Table with columns for 'IN WHOSE NAME ASSESSED', 'TO WHOM TRANSFERRED', 'DESCRIPTION OF PROPERTY', 'TRUE AND FULL VALUATIONS', 'ASSESSED VALUATIONS', 'VALUATIONS BY SCHOOL DISTRICTS AS EQUALIZED BY DEPARTMENT OF TAXATION', 'SOLD FOR TAXES', 'PAID', 'WHEN PAID', 'Number of Receipt', 'March Settlement 1959', 'June Settlement 1959', 'November Settlement 1959', 'Penalty', 'Collections to First Monday in January 1960', 'Penalty', 'Delinquent on First Monday in January 1960', 'Penalty', 'Total Delinquent Tax and Penalty', 'REMARKS'. Includes handwritten entries for George W. Patterson and Clifford A. Patterson.

Assessment Roll and Tax List of Real Property in the Town of Union #4

Cass County, Minnesota, for Taxes for the Year 1958.

Form 300

Table with columns: UN WHOSE NAME ASSESSED, TO WHOM TRANSFERRED, DESCRIPTION OF PROPERTY, TRUE AND FULL VALUATIONS, ASSESSED VALUATIONS, VALUATIONS BY SCHOOL DISTRICTS AS EQUALIZED BY DEPARTMENT OF TAXATION, SOLD FOR TAXES, PAID, WHEN PAID, Number of Receipt, March Settlement 1959, June Settlement 1959, November Settlement 1959, Collections to First Monday in January 1960, Delinquent on First Monday in January 1960, Total Delinquent Tax and Penalty, REMARKS.

12-29

43-30

Midwood

Shipwreck Beach

Assessment Roll and Tax List of Real Property in the Town

of Young #4

Cass County, Minnesota, for Taxes for the Year 1958.

\* Indicate Type of Property: R-Residential, C-Commercial, I-Industrial, U-Utility, F-Farm, L-Lakeshore, T-Timber, M-Mineral

IN WHOSE NAME ASSESSED	TO WHOM TRANSFERRED	DESCRIPTION OF PROPERTY					TRUE AND FULL VALUATIONS					ASSESSED VALUATIONS								SOLD FOR TAXES	VALUATIONS BY SCHOOL DISTRICTS AS EQUALIZED BY DEPARTMENT OF TAXATION						PAID	WHEN PAID	Number of Receipt	March Settlement 1959	June Settlement 1959	Penalty	November Settlement 1959	Penalty	Collections to First Monday in January 1960	Penalty	Delinquent on First Monday in January 1960	Total Delinquent Tax and Penalty	REMARKS						
		SUBDIVISION	Sec. or Lot	Town or Block	Rng.	Number of Acres of Land Acres 100ths	LAND Exclusive of Structures and Improvements Dollars	BUILDINGS and Other Structures Dollars	MACHINERY Permanently Attached to Real Estate Dollars	TOTAL True and Full Value Dollars	RURAL		ALL OTHER			MACHINERY Permanently Attached to Real Estate 33 1/3 % Dollars	TOTAL ASSESSED VALUE Dollars	Total Assessed Value as Equivalized by the Board of Review Dollars	FINAL EQUALIZED VALUE Dollars		VALUATIONS BY SCHOOL DISTRICTS AS EQUALIZED BY DEPARTMENT OF TAXATION																								
											Homestead Up to \$4,000 20 %	Over \$4,000 and Non-Homestead 33 1/3 %	Timber Land Class 3c 20 %	Homestead Up to \$4,000 25 %	Over \$4,000 and Non-Homestead 40 %						District No.	District No.	District No.	District No.	District No.	Rate														Rate	Rate	Rate	Rate	Tax Including State Homestead Mills	State Tax on Non-Homestead Mills
State of Minnesota		NE 1/4 of NW 1/4			34 142 25													1																											
U. S. of America		NW 1/4 of NE 1/4																2																											
State of Minnesota		SW 1/4 of NE 1/4																3																											
U. S. of America		SE 1/4 of NE 1/4																4																											
																		5																											
State of Minnesota		NE 1/4 of NW 1/4																6																											
State of Minnesota		NW 1/4 of NW 1/4																7																											
State of Minnesota		SW 1/4 of NW 1/4																8																											
State of Minnesota		SE 1/4 of NW 1/4																9																											
																		10																											
State of Minnesota		NE 1/4 of SW 1/4																11																											
U. S. of America		NW 1/4 of SW 1/4																12																											
U. S. of America		SW 1/4 of SW 1/4																13																											
U. S. of America		SE 1/4 of SW 1/4																14																											
																		15																											
U. S. of America		NE 1/4 of SE 1/4																16																											
U. S. of America		NW 1/4 of SE 1/4																17																											
State of Minnesota		SW 1/4 of SE 1/4																18																											
State of Minnesota		SE 1/4 of SE 1/4																19																											
																		20																											

42-29

42-30

Minerol

Chipewa Beat



Assessment Roll and Tax List of Real Property in the Town of Young #4

Cass County, Minnesota, for Taxes for the Year 1958.

Table with columns: IN WHOSE NAME ASSESSED, TO WHOM TRANSFERRED, DESCRIPTION OF PROPERTY, TRUE AND FULL VALUATIONS, ASSESSED VALUATIONS, VALUATIONS BY SCHOOL DISTRICTS AS EQUALIZED BY DEPARTMENT OF TAXATION, SOLD FOR TAXES, PAID, WHEN PAID, Number of Receipt, March Settlement 1959, June Settlement 1959, November Settlement 1959, Collections to First Monday in January 1960, Delinquent on First Monday in January 1960, Total Delinquent Tax and Penalty, REMARKS.

143-29  
43-30  
Method Chicago Beach



Assessment Roll and Tax List of Real Property in the Town of Young # 4

Cass County, Minnesota, for Taxes for the Year 1958.

\* Indicate Type of Property: R-Residential, C-Commercial, I-Industrial, U-Utility, F-Farm, L-Lakeshore, T-Timber, M-Mineral

142-29

Table with columns: UN WHOSE NAME ASSESSED, TO WHOM TRANSFERRED, DESCRIPTION OF PROPERTY, TRUE AND FULL VALUATIONS, ASSESSED VALUATIONS, VALUATIONS BY SCHOOL DISTRICTS AS EQUALIZED BY DEPARTMENT OF TAXATION, SOLD FOR TAXES, PAID, WHEN PAID, Number of Receipt, March Settlement 1959, June Settlement 1959, Penalty, November Settlement 1959, Penalty, Collections to First Monday in January 1960, Penalty, Delinquent on First Monday in January 1960, Total Delinquent Tax and Penalty, REMARKS.

13-20

MAY 1964

CHILDRENS BECKER

135-26

1644 added

Assessment Roll and Tax List of Real Property in the Town of Unorg. #4

Indicate Type of Property: R-Residential, C-Commercial, I-Industrial, U-Utility, F-Farm, L-Lakeshore, T-Timber, M-Mineral

Cass County, Minnesota, for Taxes for the Year 1958.

Table with columns: IN WHOSE NAME ASSESSED, TO WHOM TRANSFERRED, DESCRIPTION OF PROPERTY, TRUE AND FULL VALUATIONS, ASSESSED VALUATIONS, VALUATIONS BY SCHOOL DISTRICTS AS EQUALIZED BY DEPARTMENT OF TAXATION, TAXES, PAID, WHEN PAID, etc.

Assessment Roll and Tax List of Real Property in the Town of Long #4

Indicate Type of Property: R-Residential, C-Commercial, I-Industrial, U-Utility, F-Farm, L-Lakeshore, T-Timber, M-Mineral

Table with columns: IN WHOSE NAME ASSESSED, TO WHOM TRANSFERRED, DESCRIPTION OF PROPERTY, TRUE AND FULL VALUATIONS, ASSESSED VALUATIONS, FINAL EQUALIZED VALUE.

W. Hodgman & Sons, Inc

Wm. J. Jacobson, Jr

93

Cass County, Minnesota, for Taxes for the Year 1958.

Table with columns: SOLD FOR TAXES, VALUATIONS BY SCHOOL DISTRICTS AS EQUALIZED BY DEPARTMENT OF TAXATION, Tax Including State Homestead, State Tax on Non-Homestead, SPECIAL TAXES, TOTAL TAXES, PAID, WHEN PAID, Number of Receipt, March Settlement 1959, June Settlement 1959, Penalty, November Settlement 1959, Penalty, Collections to First Monday in January 1960, Penalty, Delinquent on First Monday in January 1960, Total Delinquent Tax and Penalty, REMARKS.

PAID IN FULL MAY 20 1958

43-30

Missouri Chipmunk Beach



Assessment Roll and Tax List of Real Property in the Town of Uroing #4

Indicate Type of Property: R-Residential, C-Commercial, I-Industrial, U-Utility, F-Farm, L-Lakeshore, T-Timber, M-Mineral

Cass County, Minnesota, for Taxes for the Year 1958.

Form 500

IN WHOSE NAME ASSESSED TO WHOM TRANSFERRED

DESCRIPTION OF PROPERTY

TRUE AND FULL VALUATIONS ASSESSED VALUATIONS

VALUATIONS BY SCHOOL DISTRICTS AS EQUALIZED BY DEPARTMENT OF TAXATION

Main table with columns for property description, valuations, taxes, and payment status. Includes handwritten entries for 'Arthur E. Broughton' and 'PAID IN FULL MAY 20 1959'.

142-2 145-80

Refused Childsawa Beach









Assessment Roll and Tax List of Real Property in the Town of Ureong # 4

Cass County, Minnesota, for Taxes for the Year 1958.

Indicate Type of Property: R-Residential, C-Commercial, I-Industrial, U-Utility, F-Farm, L-Lakeshore, T-Timber, M-Mineral

14  
143-20

Table with columns: IN WHOSE NAME ASSESSED, TO WHOM TRANSFERRED, DESCRIPTION OF PROPERTY, TRUE AND FULL VALUATIONS, ASSESSED VALUATIONS, VALUATIONS BY SCHOOL DISTRICTS AS EQUALIZED BY DEPARTMENT OF TAXATION, TAXES, PAID, WHEN PAID, Number of Receipt, March Settlement 1959, June Settlement 1959, November Settlement 1959, Penalty, Collections to First Monday in January 1960, Delinquent on First Monday in January 1960, Total Delinquent Tax and Penalty, REMARKS.

Atwood  
Chp. Eva. Bench



Assessment Roll and Tax List of Real Property in the Town of Zimery #4

Cass County, Minnesota, for Taxes for the Year 1958.

Form 300 (1-5-57)

Indicate Type of Property: R-Residential, C-Commercial, I-Industrial, U-Utility, F-Farm, L-Lakeshore, T-Timber, M-Mineral

Main assessment table with columns: IN WHOSE NAME ASSESSED, TO WHOM TRANSFERRED, DESCRIPTION OF PROPERTY, TRUE AND FULL VALUATIONS, ASSESSED VALUATIONS, VALUATIONS BY SCHOOL DISTRICTS AS EQUALIZED BY DEPARTMENT OF TAXATION, SOLD FOR TAXES, PAID, WHEN PAID, etc.

142 143-20

143-20

Assessment Roll and Tax List of Real Property in the Town of Young #4

Cass County, Minnesota, for Taxes for the Year 1958.

Indicate Type of Property: R-Residential, C-Commercial, I-Industrial, U-Utility, F-Farm, L-Lakeshore, T-Timber, M-Mineral

Table with columns: IN WHOSE NAME ASSESSED, TO WHOM TRANSFERRED, SUBDIVISION, TRUE AND FULL VALUATIONS (LAND, BUILDINGS, MACHINERY, TOTAL), ASSESSED VALUATIONS (RURAL, ALL OTHER, MACHINERY, TOTAL), VALUATIONS BY SCHOOL DISTRICTS, TAXES (SOLD FOR, DISTRICT, STATE, SPECIAL, TOTAL), PAID, WHEN PAID, and REMARKS.

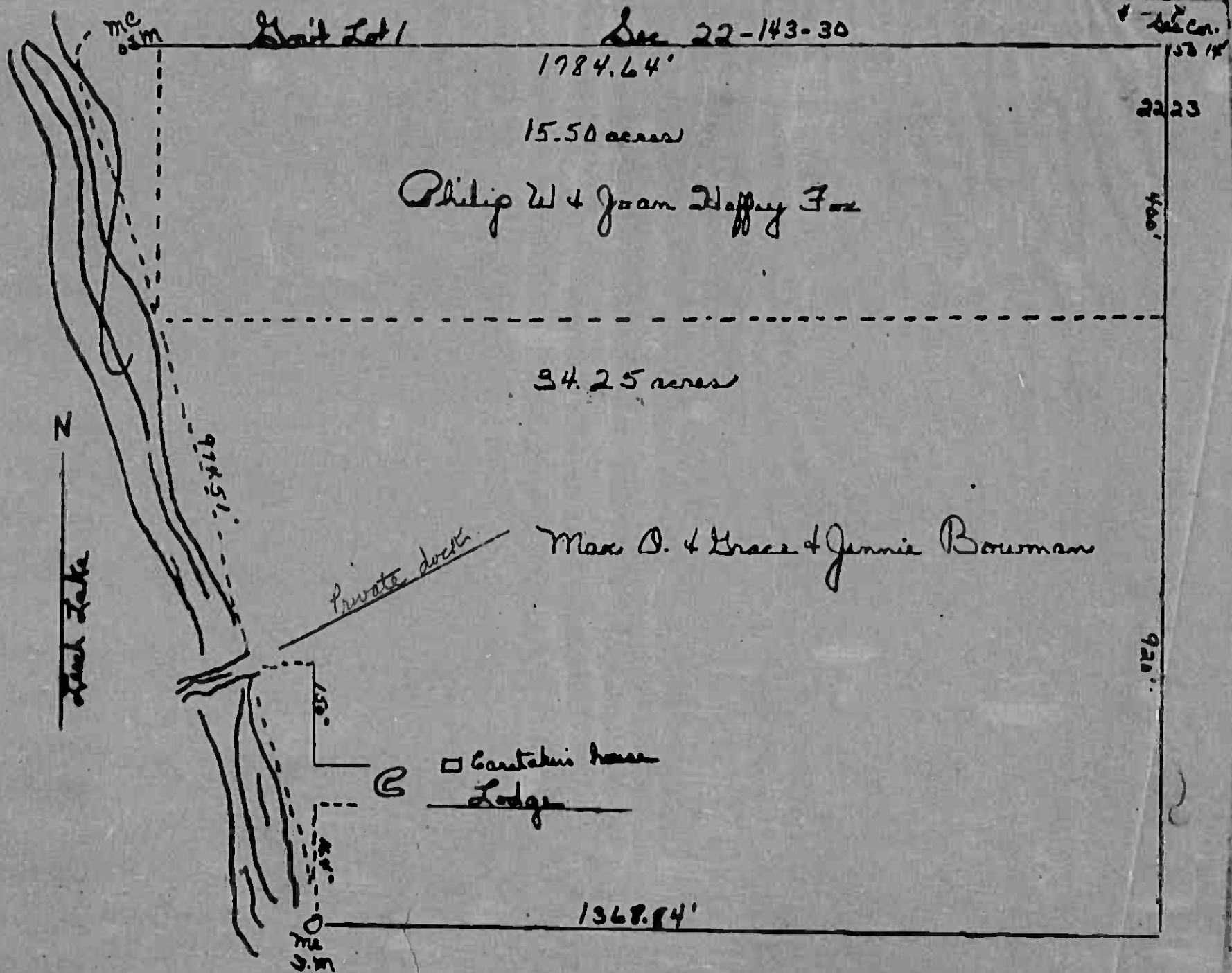
143-30

143-30









Unit Lot 1

Sec 22-143-30

1784.64'

15.50 acres

Philip W & Joan Haffey Fox

34.25 acres

Max O. & Grace & Jennie Bowman

□ Cantabrigia house  
Lodge

1368.84'

2223

926

N

Cantabrigia Lake

private dock

mc  
0.2m

914.51'

mc  
0.2m

Assessment Roll and Tax List of Real Property in the Town of Union #4

Indicate Type of Property: R-Residential, C-Commercial, I-Industrial, U-Utility, F-Farm, L-Lakeshore, T-Timber, M-Mineral

Table with columns: IN WHOSE NAME ASSESSED, TO WHOM TRANSFERRED, SUBDIVISION, TRUE AND FULL VALUATIONS (LAND, BUILDINGS, MACHINERY, TOTAL), ASSESSED VALUATIONS (RURAL, ALL OTHER, MACHINERY), TOTAL ASSESSED VALUE, and FINAL EQUALIZED VALUE.

Lot 1

Cass County, Minnesota, for Taxes for the Year 1958.

Table with columns: SOLD FOR TAXES, VALUATIONS BY SCHOOL DISTRICTS AS EQUALIZED BY DEPARTMENT OF TAXATION, Tax including State Homestead, State Tax on Non-Homestead, SPECIAL TAXES, TOTAL TAXES, PAID, WHEN PAID, Number of Receipt, March Settlement 1959, June Settlement 1959, Penalty, November Settlement 1959, Penalty, Collections to First Monday in January 1960, Penalty, Delinquent on First Monday in January 1960, Total Delinquent Tax and Penalty, and REMARKS.

Refused Child Eva Beach

Assessment Roll and Tax List of Real Property in the Town of Union #4

Cass County, Minnesota, for Taxes for the Year 1958.

Indicate Type of Property: R-Residential, C-Commercial, I-Industrial, U-Utility, F-Farm, L-Lakeshore, T-Timber, M-Mineral

Table with columns: IN WHOSE NAME ASSESSED, TO WHOM TRANSFERRED, DESCRIPTION OF PROPERTY, TRUE AND FULL VALUATIONS, ASSESSED VALUATIONS, VALUATIONS BY SCHOOL DISTRICTS AS EQUALIZED BY DEPARTMENT OF TAXATION, SOLD FOR TAXES, PAID, WHEN PAID, March Settlement 1959, June Settlement 1959, November Settlement 1959, Collections to First Monday in January 1960, Delinquent on First Monday in January 1960, Total Delinquent Tax and Penalty, REMARKS.

142-20  
143-30

143-30  
142-20

Assessment Roll and Tax List of Real Property in the Town of Young #4

Cass County, Minnesota, for Taxes for the Year 1958.

Form 300 (1957) Indicate Type of Property: R-Residential, C-Commercial, I-Industrial, U-Utility, F-Farm, L-Lakeshore, T-Timber, M-Mineral

Table with columns: IN WHOSE NAME ASSESSED, TO WHOM TRANSFERRED, DESCRIPTION OF PROPERTY, TRUE AND FULL VALUATIONS, ASSESSED VALUATIONS, VALUATIONS BY SCHOOL DISTRICTS AS EQUALIZED BY DEPARTMENT OF TAXATION, TAXES, PAID, WHEN PAID, Number of Receipt, March Settlement 1959, June Settlement 1959, November Settlement 1959, Collections to First Monday in January 1960, Delinquent on First Monday in January 1960, Total Delinquent Tax and Penalty, REMARKS.

13-30

13-30

Assessment Roll and Tax List of Real Property in the Town of Union # 4

Cass County, Minnesota, for Taxes for the Year 1958.

Form 507 Indicate Type of Property: R-Residential, C-Commercial, I-Industrial, U-Utility, F-Farm, L-Lakeshore, T-Timber, M-Mineral

143-20

Table with columns: IN WHOSE NAME ASSESSED, TO WHOM TRANSFERRED, SUBDIVISION, TRUE AND FULL VALUATIONS (LAND, BUILDINGS, MACHINERY, TOTAL), ASSESSED VALUATIONS (RURAL, ALL OTHER, MACHINERY), and FINAL EQUALIZED VALUE.

John J. Cote, Andrew James R. Samuel S. Boyer & Samuel S. Boyer, Jr.

Lot 1 9 25 501 167 501 167

Table with columns: VALUATIONS BY SCHOOL DISTRICTS AS EQUALIZED BY DEPARTMENT OF TAXATION (District No., Rate, Mills), Tax including State Homestead, State Tax on Non-Homestead, SPECIAL TAXES, TOTAL TAXES, PAID, WHEN PAID, Number of Receipt, March Settlement, June Settlement, November Settlement, Collections to First Monday in January 1960, Delinquent on First Monday in January 1960, Total Delinquent Tax and Penalty, REMARKS.

PAID IN FULL MAY 2 1959 5953 43 16

13512

Harwood Chipewin Beach



Indicate Type of Property: R-Residential, C-Commercial, I-Industrial, U-Utility, F-Farm, L-Lakeshore, T-Timber, M-Mineral

Table with columns for IN WHOSE NAME ASSESSED, TO WHOM TRANSFERRED, DESCRIPTION OF PROPERTY, TRUE AND FULL VALUATIONS, and ASSESSED VALUATIONS. Includes handwritten entries for 'Fairwood' and 'Balance of Plat of Fairwood has been vacated'.

Table with columns for SOLD FOR TAXES, VALUATIONS BY SCHOOL DISTRICTS AS EQUALIZED BY DEPARTMENT OF TAXATION, Tax including State Homestead, SPECIAL TAXES, TOTAL TAXES, PAID, WHEN PAID, Number of Receipt, March Settlement 1959, June Settlement 1959, Penalty, November Settlement 1959, Collections to First Monday in January 1960, Delinquent on First Monday in January 1960, Total Delinquent Tax and Penalty, and REMARKS. Includes handwritten notes like 'PAID IN FULL MAY 29 1959'.

Chapman Beach

Assessment Roll and Tax List of Real Property in the Town of Union # 4

Indicate Type of Property: R-Residential, C-Commercial, I-Industrial, U-Utility, F-Farm, L-Lakeshore, T-Timber, M-Mineral

Cass County, Minnesota, for Taxes for the Year 1958.

Main data table with columns for IN WHOSE NAME ASSESSED, TO WHOM TRANSFERRED, DESCRIPTION OF PROPERTY, TRUE AND FULL VALUATIONS, ASSESSED VALUATIONS, VALUATIONS BY SCHOOL DISTRICTS, TAXES, PAID, WHEN PAID, and REMARKS.





Assessment Roll and Tax List of Real Property in the Town of Young #4

Indicate Type of Property: R-Residential, C-Commercial, I-Industrial, U-Utility, F-Farm, L-Lakeshore, T-Timber, M-Mineral

Cass County, Minnesota, for Taxes for the Year 1958.

Table with columns: IN WHOSE NAME ASSESSED, TO WHOM TRANSFERRED, DESCRIPTION OF PROPERTY, TRUE AND FULL VALUATIONS, ASSESSED VALUATIONS, VALUATIONS BY SCHOOL DISTRICTS AS EQUALIZED BY DEPARTMENT OF TAXATION, TAXES, PAID, WHEN PAID, and REMARKS. Includes handwritten entries for 'Grand Totals' and specific tax calculations.