

ASSESSMENT & TAX LIST
Unorganized No. 4
1952

INDEX TO SECTIONS

SECTION PAGE

Sec. 1	
" 2	
" 3	
" 4	
" 5	
" 6	
" 7	
" 8	
" 9	
" 10	
" 11	
" 12	
" 13	
" 14	
" 15	
" 16	
" 17	
" 18	
" 19	
" 20	
" 21	
" 22	
" 23	
" 24	
" 25	
" 26	
" 27	
" 28	
" 29	
" 30	
" 31	
" 32	
" 33	
" 34	
" 35	
" 36	

For Convenience of Auditor in Showing Boundaries of School Districts

Township No. Wmorg Range No. # 4 Mer. P. M.

Wm # 4 contains townships as follows:

Down School Dist: 6-1
142-25
142-29 (except Sec. 25-4-36) Wm.
143-30 (except Sec. 31-4-32+33+34+35+36) Wm.
Sec. 3-4-5-6-7-8-9-11+19
143-30 (Sec. 31-4-32) 5
143-29 (except eastern part which is attached to Howell Twp) Wm.
143-30 Sec. 3-4-5-6-7-8-9-11+19 #3
because # 3 sch. Dist 8-2082

Returns Showing Grain Received in or Handled by Elevators, Warehouses and Mills in the _____ of _____ in the County of _____ for the Year Ending May 1, 1952.

NAMES OF OWNERS	ADDRESS	Bushels of Wheat	Bushels of Soy Beans	Bushels of Flax	Total No. of Bushels of Wheat, Soy Beans and Flax	Tax of 1/4 Mill per Bushel		Bushels of Corn	Bushels of Barley	Bushels of Rye	Bushels of Oats	Bushels of Buckwheat	Bushels of all Other Grains	Total No. Bushels Corn, Barley, Rye, Oats, Buckwheat and all Other Grains	Tax of 1/4 Mill Per Bushel		Total Tax		REMARKS	
						Dollars	Cts.								Dollars	Cts.	Dollars	Cts.		

Note * Assessors will not fill these Columns

SUMMARY OF TAX COLLECTION

Original Levy	\$ 3637.64
Additions	\$ _____
	\$ 3637.64
Abatements	\$ 9.96
	\$ 3627.68

COLLECTIONS

March Settlement	\$ 505.00
June Settlement	\$ 1803.95
November Settlement	\$ 985.27
January Settlement	\$ 20.00
	\$ 313.46
Over Collected	\$ _____
Under Collected	\$ _____
Delinquent	\$ 313.46
Total	\$ 3627.68

TABULAR SCHEDULE OF VALUATIONS,

LEVIED IN THE Town OF Unorg. # 4

RATES AND TAXES

COUNTY OF CASS, STATE OF MINNESOTA

277.38
2.26
227.124
197.08
2.26
174.824

School District No.	VALUATION BY SCHOOL DISTRICTS				RATE OF STATE TAXES	RATE OF COUNTY TAXES						RATE OF TOWN TAXES										RATE OF		
	Agricultural Lands	Non-Agricultural Lands	Personal Property	Total Value of all Property except Money and Credits		Rev.	H. & B.	Welfare	Bonds and Int.	Total Rate of County Tax	Rev.	R. & B.	Drag Tax	State Loan	Bonds		Tuition		Transportation		C.O. B.O.D.		B.O.D.	
	Dollars	Dollars	Dollars	Dollars	Mills	Mills	Mills	Mills	Mills	Mills	Mills	Mills	Mills	Mills	Mills	Mills	Mills	Mills	Mills	Mills	Mills	Mills	Mills	Mills
3	287			287	4.58	27.1	12.8	57.3	14.3	105.5	5.													
5	2024	6935	1946	10905																				
Un	2055	1246	492	3793																				
C# 1	3419		2827	3797																				
	7785	8181	2811	18777																				
Assessed Value	Rural	All Other	Personal Property	Total																				
Homestead	4462			4462																				
Non-Homestead	11504		2811	14315																				
Total	15966		2811	18777																				

143.30
Ne. 3-4-5-6-7-8
9-11-19

SCHOOL TAXES	LOCAL 1 MILL AND SPECIAL SCHOOL TAXES BY DISTRICTS										ALL OTHER TAXES		
	Total Rate of Sch'l Tax	Total Rate of all Taxes	Local 1 Mill	Special	State Loan	Def.	Transp.	C.O. B.O.D.	B.O.D.	Total School Taxes	FUNDS	Rate	Amounts
	72.18708	29	574	861	86	143.33	287	86	2066	State-Non-Homestead,		3244	
	92.20708									State-Homestead,		8600	
	43.315838	202	4048	1133	607	870.35	1295	607	8762	County Revenue,		50887	
	63.37838	888	36524	4973	2664	3819.35	5684	2664	56216	County Road and Bridge,		24034	
	82.19708	206	4110	8220	616	3082		617	16851	County Welfare,		96327	
	102.21708	674	6952	6952	521	2607		521	17727	Bonds and Interest		26851	
	112.32738	370	9252	3479	18690	1110	19980	6662	41561			198099	
	137.32538	09	455	86	460	490	164		1250				
		1878	60915	3565	41289	5631	12568	1492	4495	144433			
										Town Revenue,		9388	
										Town Road and Bridge,			
										Town Drag,			
										Town State Loan,			
										School Local 1 Mill,		1878	
										School Special,		60915	
										School State Loan, C#1		3565	
										Deficiency		41289	
										Tuition		5631	
										Transportation		5631	
										Capital Outlay		12568	
										Bond & Int. Un		14092	
										Bond & Int		4495	
												14443.33	

Total Levy, \$ *3637.64*

I, L. C. Peterson, Auditor of said County and State aforesaid, do hereby certify that the foregoing is true and correct Schedule, showing the valuation of all the taxable property, in the Town of Unorganized # 4, in said County, the several rates of Taxation and Totals of the several Tax Funds levied thereon for the year A. D. 195 15th day of January A. D. 195 3. Witness my hand and official seal, this 15th day of January A. D. 195 3.

SEAL

Total Taxes Real Estate *3090.24*
Pers. Prop. *547.40*
Total *3637.64*

COLLECTIONS OF TAXES OF 195

OF CASS COUNTY, MINNESOTA

FUNDS	MARCH SETTLEMENT	JUNE SETTLEMENT	NOV. SETTLEMENT	Amount Collected from Nov. 19... to First Monday in Jan. 19...	REDUCTIONS	Total Reductions and Collected	BALANCE UNCOLLECTED	ADDITIONS	Total Uncollected to First Monday in January, 19...
	19...	19...	19...						
State—Non-Homestead,	496	1574	866						
State—Homestead,	1240	4301	2327	40					
County Revenue,	7335	25447	13783	238					
County Road and Bridge,	3465	12019	6510	113					
County Welfare,	13886	48171	26091	451					
County Bond and Interest,	3871	13428	7273	126					
Town Revenue,									
Town Road and Bridge,	1353	4695	2543	44					
Town Drag,									
Town State Loan,									
School Local 1 Mill,	271	939	509	09					
School Special,	10773	27834	18415	221					
School State Loan,	154	2042	366	83					
Deficiency	2898	21332	10260	444					
Tuition	811	2816	1527	26					
Transportation	1383	6045	3443	47					
CO	1507	3391	1952						
B+D (5)	762	2165	1410						
B+D (Un)	295	3909	700	158					
B+D (C1)		287							
B+D (3)									
	50500	180395	98527	2000					

	School District No.	LOCAL 1 MILL	SPECIAL	STATE LOAN	Def	Trans.	CO.	B+D (5)	B+D (Un)	B+D (C1)	TOTALS B+D (3)	Totals
MARCH SETTLEMENT	School District No.											
	5 NA	235	9420		1319	706	1013	1507	706		14906	
	C-1 A	09	220	83	444	26	47			158	987	
	C-1 NA	08	381	71	383	23	41			137	1044	
	Un A											
Totals		271	10773	154	2198	811	1383	1507	762	295	18854	
JUNE SETTLEMENT	School District No. Un NA	49	1960		1960	147	735		147		3882	47.98
	C-1 A	216	5392	2028	10892	647	1165			27	242.22	2.04
	C-1 NA	01	74	14	76	04	08				287	20.66
	A 3	27	574		861	86	143		86			18.85
	5 A	182	3642		1020	546	783	1166	546			220.05
	5 NA	348	13904		1947	1043	1495	2225	1043			93.80
	Un A	114	2288		4576	343	1116		343			
Totals		939	27834	2042	21332	2816	6045	3391	2165	3909	287	707.60
NOVEMBER SETTLEMENT	School District No.											
	C-1 A	39	972	366	1964	117	210			700		43.68
	5 NA	305	12200		1705	415	1312	1952	415			193.07
	Un A	67	1344		2658	202	1008		202			55.11
	Un NA	98	3844		3906	293	1463		293			99.46
Totals		509	18415	366	10260	1527	3993	1952	1410	700		391.32
NOVEMBER to JANUARY	School District No.											
	C-1 A	09	221	83	444	26	47			158		9.88
Totals		09	221	83	444	26	47			158		9.88
ADDITIONS	School District No.											
	Totals											
REDUCTIONS	School District No.											
	Totals											

11-2-29

11-3-30

FALMWOOD

Assessment Roll and Tax List of Real Property in the Town of Morgan #4

Cass County, Minnesota, for Taxes for the Year 1952.

WHOSE NAME ASSESSED	TO WHOM TRANSFERRED	DESCRIPTION OF PROPERTY			TRUE AND FULL VALUATIONS								MACHINERY Permanently Attached to Real Estate	TOTAL ASSESSED VALUE	Total Assessed Value as Equalized by the Board of Review	FINAL EQUALIZED VALUE
		Subdivision	Sec. of Lot	Town or Block	Range	Number of Acres of Land	LAND Exclusive of Structures and Improvements		BUILDINGS and Other Structures	RURAL		ALL OTHER				
<i>St. Mary's Ch. R. & B. C. Penell</i>																

SOLD FOR TAXES	VALUATIONS BY SCHOOL DISTRICTS AS EQUALIZED BY DEPARTMENT OF TAXATION						Tax including State Homestead	State Tax on Non-Homestead	SPECIAL TAXES	TOTAL TAXES	PAID	WHEN PAID	Number of Receipt	March Settlement 1953	June Settlement 1953	Penalty	November Settlement 1953	Penalty	Collections to First Monday in January 1954	Penalty	Delinquent on First Monday in January 1954	Total Delinquent Tax and Penalty	REMARKS
	District No. 1	District No. 2	District No. 3	District No. 4	District No. 5	District No. 6																	

112-25

112-29

113-30

FAIRWOOD

Assessment Roll and Tax List of Real Property in the Lawn of Mary # 4

Form SCD (52) MILLER-GAYNE COMPANY, MINNEAPOLIS

IN WHOSE NAME ASSESSED	TO WHOM TRANSFERRED	DESCRIPTION OF PROPERTY				TRUE AND FULL VALUATIONS							ASSESSED VALUATIONS					FINAL EQUALIZED VALUE		
		SUBDIVISION	Sec. of Lot	Town or Block	Reg.	Number of Acres of Land	LAND Exclusive of Structures and Improvements	BUILDINGS and Other Structures	MACHINERY Permanently Attached to Real Estate	TOTAL True and Full Value	RURAL		ALL OTHER		MACHINERY Permanently Attached to Real Estate	TOTAL ASSESSED VALUE	Total Assessed Value as Equalized by the Board of Review			
											Acres	100ths	Homestead Up to \$1,000	Over \$1,000 and Non-Homestead					Homestead Up to \$4,000	Over \$4,000 and Non-Homestead
Dollars	Dollars	Dollars	Dollars	Dollars	Dollars	Dollars	Dollars	Dollars	Dollars	Dollars	Dollars	Dollars	Dollars	Dollars						
U. S. of America		1	NE 1/4 of NE 1/4																	
U. S. of America		2	NW 1/4 of NE 1/4																	
U. S. of America		3	SW 1/4 of NE 1/4																	
U. S. of America		4	SE 1/4 of NE 1/4																	
U. S. of America		5																		
U. S. of America		6	NE 1/4 of NW 1/4																	
U. S. of America		7	NW 1/4 of NW 1/4																	
U. S. of America		8	SW 1/4 of NW 1/4																	
U. S. of America		9	SE 1/4 of NW 1/4																	
U. S. of America		10																		
U. S. of America		11	NE 1/4 of SW 1/4																	
U. S. of America		12	NW 1/4 of SW 1/4																	
U. S. of America		13	SW 1/4 of SW 1/4																	
U. S. of America		14	SE 1/4 of SW 1/4																	
U. S. of America		15																		
U. S. of America		16	NE 1/4 of SE 1/4																	
U. S. of America		17	NW 1/4 of SE 1/4																	
U. S. of America		18	SW 1/4 of SE 1/4																	
U. S. of America		19	SE 1/4 of SE 1/4																	
U. S. of America		20																		

Cass County, Minnesota, for Taxes for the Year 1952.

SOLD FOR TAXES	VALUATIONS BY SCHOOL DISTRICTS AS EQUALIZED BY DEPARTMENT OF TAXATION						Tax Including State Homestead	State Tax on Non-Homestead	SPECIAL TAXES	TOTAL TAXES	PAID	WHEN PAID	Number of Receipt	March Settlement 1953	June Settlement 1953	Penalty	November Settlement 1953	Penalty	Collections to First Monday in January 1954	Penalty	Delinquent on First Monday in January 1954	Total Delinquent Tax and Penalty	REMARKS
	District No.	District No.	District No.	District No.	District No.	District No.																	
	Rate	Rate	Rate	Rate	Rate	Rate																	
	Mills	Mills	Mills	Mills	Mills	Mills																	
Dollars	Dollars	Dollars	Dollars	Dollars	Dollars	\$ cts.	\$ cts.	\$ cts.	\$ cts.	Month Day Year	\$ cts.	\$ cts.	\$ cts.	\$ cts.	\$ cts.	\$ cts.	\$ cts.	\$ cts.	\$ cts.	\$ cts.			
1																							
2																							
3																							
4																							
5																							
6																							
7																							
8																							
9																							
10																							
11																							
12																							
13																							
14																							
15																							
16																							
17																							
18																							
19																							
20																							

112-25

112-29

113-30

FALMWOOD

Assessment Roll and Tax List of Real Property in the Lower of Wmarg #4

Cass County, Minnesota, for Taxes for the Year 1952.

Form SCD (57) 1-15-52

IN WHOSE NAME ASSESSED	TO WHOM TRANSFERRED	DESCRIPTION OF PROPERTY			TRUE AND FULL VALUATIONS				ASSESSED VALUATIONS					FINAL EQUALIZED VALUE	SOLD FOR TAXES	VALUATIONS BY SCHOOL DISTRICTS AS EQUALIZED BY DEPARTMENT OF TAXATION						Tax including State Homestead	State Tax on Non-Homestead	SPECIAL TAXES	TOTAL TAXES	PAID	WHEN PAID	Number of Receipt	March Settlement 1953	June Settlement 1953	Penalty	November Settlement 1953	Penalty	Collections to First Monday in January 1954	Penalty	Delinquent on First Monday in January 1954	Total Delinquent Tax and Penalty	REMARKS						
		Subdivision	Sec. or Lot	Town or Block	Rng.	Number of Acres of Land	LAND Exclusive of Structures and Improvements	BUILDINGS and Other Structures	MACHINERY Permanently Attached to Real Estate	TOTAL True and Full Value	RURAL Homestead Up to \$4,000 20%	Over \$4,000 and Non-Homestead 33 1/3%	ALL OTHER Homestead Up to \$4,000 25%			Over \$4,000 and Non-Homestead 40%	MACHINERY Permanently Attached to Real Estate 33 1/3%	TOTAL ASSESSED VALUE	Total Assessed Value as Equalized by the Board of Review	District No. Rate	District No. Rate																		District No. Rate	District No. Rate	District No. Rate	District No. Rate	\$ cts.	\$ cts.
State of Minnesota		NE 1/4 of NE 1/4																																										
U. S. of America		NW 1/4 of NE 1/4																																										
U. S. of America		SW 1/4 of NE 1/4																																										
State of Minnesota		SE 1/4 of NE 1/4																																										
U. S. of America		NE 1/4 of NW 1/4																																										
U. S. of America		NW 1/4 of NW 1/4																																										
U. S. of America		SW 1/4 of NW 1/4																																										
U. S. of America		S 1/2 of NW 1/4																																										
U. S. of America		NE 1/4 of SW 1/4																																										
U. S. of America		NW 1/4 of SW 1/4																																										
U. S. of America		SW 1/4 of SW 1/4																																										
U. S. of America		SE 1/4 of SW 1/4																																										
U. S. of America		NE 1/4 of SE 1/4																																										
U. S. of America		NW 1/4 of SE 1/4																																										
U. S. of America		SW 1/4 of SE 1/4																																										
U. S. of America		SE 1/4 of SE 1/4																																										

112-25

112-29

113-30

FARMWOOD

Assessment Roll and Tax List of Real Property in the Lower of Range #1

Cass County, Minnesota, for Taxes for the Year 1952.

Form SCD (53)

IN WHOSE NAME ASSESSED	TO WHOM TRANSFERRED	DESCRIPTION OF PROPERTY				TRUE AND FULL VALUATIONS					ASSESSED VALUATIONS					FINAL EQUALIZED VALUE					
		SUBDIVISION	Sec. of 36	Town and Block	Rng.	Number of Acres of Land Acres 100ths	No. School District	Indicates Homestead Yes or No	Indicates Agricultural Use Yes or No	LAND Exclusive of Structures and Improvements	BUILDINGS and Other Structures	MACHINERY Permanently Attached to Real Estate	TOTAL True and Full Value	RURAL			ALL OTHER		MACHINERY Permanently Attached to Real Estate	TOTAL ASSESSED VALUE	Total Assessed Value as Equalized by the Board of Review
														Homestead	Over \$4,000 and Non-Homestead		Homestead	Over \$4,000 and Non-Homestead			
														Up to \$4,000 20%	33 1/3%		Up to \$4,000 25%	40%			
Dollars		Dollars		Dollars		Dollars		Dollars		Dollars		Dollars		Dollars		Dollars					
U. S. of America		NE 1/4 of NE 1/4																			
U. S. of America		NW 1/4 of NE 1/4																			
U. S. of America		SW 1/4 of NE 1/4																			
U. S. of America		SE 1/4 of NE 1/4																			
U. S. of America		NE 1/4 of NW 1/4																			
U. S. of America		NW 1/4 of NW 1/4																			
U. S. of America		SW 1/4 of NW 1/4																			
U. S. of America		SE 1/4 of NW 1/4																			
U. S. of America		NE 1/4 of SW 1/4																			
U. S. of America		NW 1/4 of SW 1/4																			
U. S. of America		SW 1/4 of SW 1/4																			
State of Minnesota		SE 1/4 of SW 1/4																			
U. S. of America		NE 1/4 of SE 1/4																			
U. S. of America		NW 1/4 of SE 1/4																			
State of Minnesota		SW 1/4 of SE 1/4																			
U. S. of America		SE 1/4 of SE 1/4																			

SOLD FOR TAXES	VALUATIONS BY SCHOOL DISTRICTS AS EQUALIZED BY DEPARTMENT OF TAXATION						Including State Homestead	State Tax on Non-Homestead	SPECIAL TAXES	TOTAL TAXES	PAID	WHEN PAID	Number of Receipt	March Settlement 1953	June Settlement 1953	Penalty 1953	November Settlement 1953	Penalty 1953	Collections to First Monday in January 1954	Penalty 1954	Delinquent on First Monday in January 1954	Total Delinquent Tax and Penalty	REMARKS
	District No.	District No.	District No.	District No.	District No.	District No.																	
	Rate	Rate	Rate	Rate	Rate	Rate																	
	Mills	Mills	Mills	Mills	Mills	Mills																	
Dollars		Dollars		Dollars		Dollars		Dollars		Dollars		Dollars		Dollars		Dollars		Dollars		Dollars			

112-25

112-29

113-30

F. IRWOOD

Assessment Roll and Tax List of Real Property in the Lower of Range #4

IN WHOSE NAME ASSESSED	TO WHOM TRANSFERRED	DESCRIPTION OF PROPERTY				TRUE AND FULL VALUATIONS					ASSESSED VALUATIONS					FINAL EQUALIZED VALUE	
		SUBDIVISION	Sec. or Lot	Town or Range	Number of Acres of Land	LAND Exclusive of Structures and Improvements	BUILDINGS and Other Structures	MACHINERY Permanently Attached to Real Estate	TOTAL True and Full Value	RURAL		ALL OTHER		MACHINERY Permanently Attached to Real Estate	TOTAL ASSESSED VALUE		Total Assessed Value as Equalized by the Board of Review
										Homestead Up to \$4,000 20%	Over \$4,000 and Non-Homestead 33 1/3%	Homestead Up to \$4,000 25%	Over \$4,000 and Non-Homestead 40%				
U. S. of America		NE 1/4 of NE 1/4	27	142	25												
U. S. of America		NW 1/4 of NE 1/4															
U. S. of America		SW 1/4 of NE 1/4															
U. S. of America		SE 1/4 of NE 1/4															
State of Minnesota		NE 1/4 of NW 1/4															
State of Minnesota		NW 1/4 of NW 1/4															
State of Minnesota		SW 1/4 of NW 1/4															
State of Minnesota		SE 1/4 of NW 1/4															
U. S. of America		NE 1/4 of SW 1/4															
U. S. of America		NW 1/4 of SW 1/4															
U. S. of America		SW 1/4 of SW 1/4															
U. S. of America		SE 1/4 of SW 1/4															
State of Minnesota		NE 1/4 of SE 1/4															
U. S. of America		NW 1/4 of SE 1/4															
U. S. of America		SW 1/4 of SE 1/4															
U. S. of America		SE 1/4 of SE 1/4															

SOLD FOR TAXES	VALUATIONS BY SCHOOL DISTRICTS AS EQUALIZED BY DEPARTMENT OF TAXATION						Tax Including State Homestead	State Tax on Non-Homestead	SPECIAL TAXES	TOTAL TAXES	PAID	WHEN PAID	Number of Receipt	March Settlement 1953	June Settlement 1953	Penalty 1953	November Settlement 1953	Penalty 1953	Collections to First Monday in January 1954	Penalty 1954	Delinquent on First Monday in January 1954	Total Delinquent Tax and Penalty	REMARKS
	District No.	District No.	District No.	District No.	District No.	District No.																	
	Rate	Rate	Rate	Rate	Rate	Rate																	
1										1													
2										2													
3										3													
4										4													
5										5													
6										6													
7										7													
8										8													
9										9													
10										10													
11										11													
12										12													
13										13													
14										14													
15										15													
16										16													
17										17													
18										18													
19										19													
20										20													

112-25

112-29

113-30

FALTRWOOD

Assessment Roll and Tax List of Real Property in the Town of Umap...

Table with columns: IN WHOSE NAME ASSESSED, TO WHOM TRANSFERRED, DESCRIPTION OF PROPERTY, TRUE AND FULL VALUATIONS, ASSESSED VALUATIONS, and FINAL EQUALIZED VALUE.

Table with columns: VALUATIONS BY SCHOOL DISTRICTS AS EQUALIZED BY DEPARTMENT OF TAXATION, Tax including State Homestead, State Tax on Non-Homestead, SPECIAL TAXES, TOTAL TAXES, PAID, WHEN PAID, Number of Receipt, March Settlement 1953, June Settlement 1953, November Settlement 1953, Penalty, Collections to First Monday in January 1954, Delinquent on First Monday in January 1954, Total Delinquent Tax and Penalty, and REMARKS.

112-29

More description of the property...

113-30

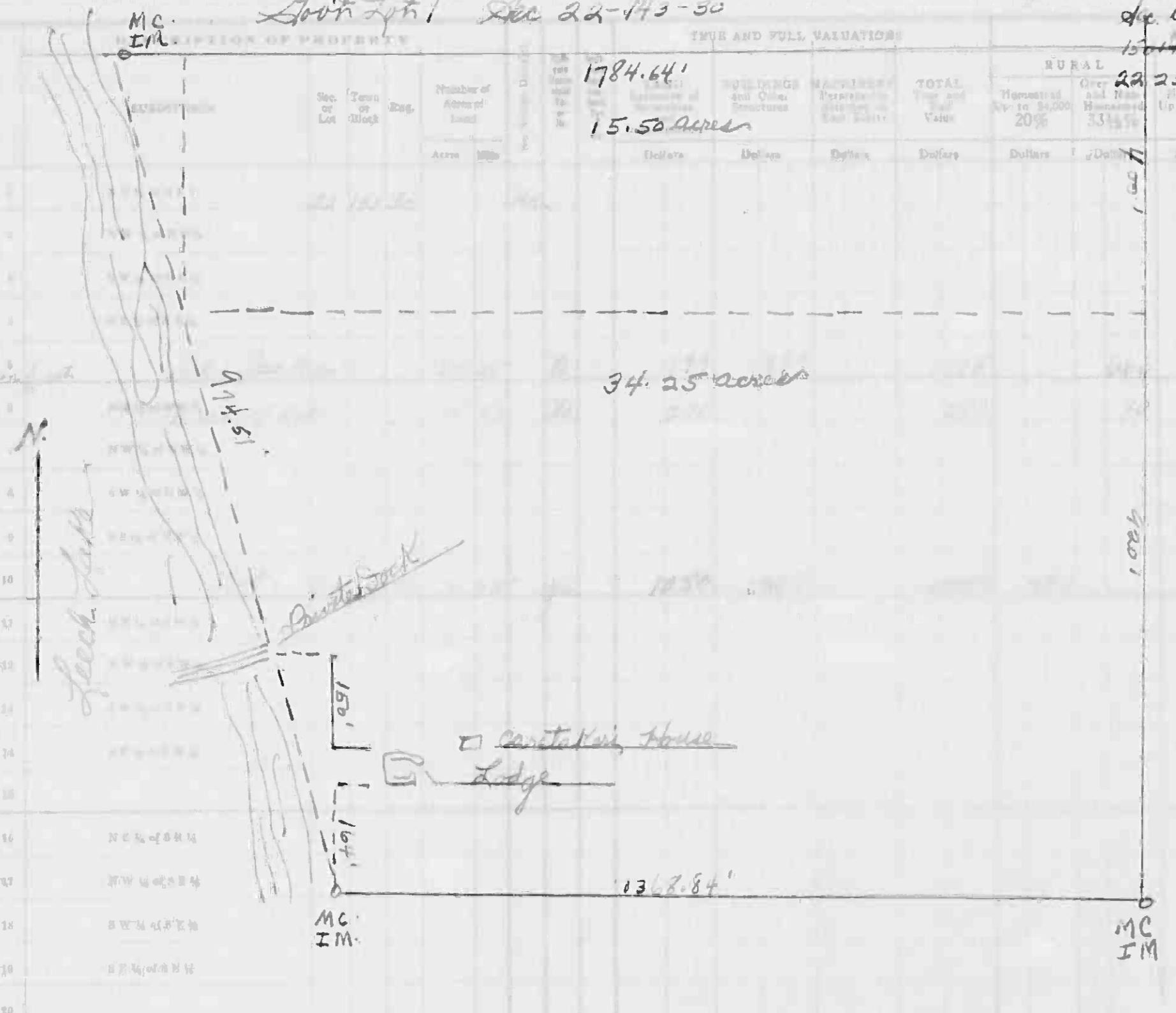
EATWOOD

Part 9.96 dated...

Assessment Roll and Tax List of Real Property in the County of Cass, Minnesota

Cass County, Minnesota, for Taxes for the Year 1952.

Form 30D (52) - 1952



IN WHOSE NAME ASSESSED

TO WHOM TRANSFERRED

Section	Area	Value
1784.64'	15.50 Acres	1784.64'
34.25 acres		
132.84'		

Max C. & Grace J. Cowman Spink, Jr.
 Mrs. H. Irene B. Mallory

Lon. V. Lewis

OTHER	MACHINERY	TOTAL ASSESSED VALUE	Total Assessed Value as Equalized by the Board of Review	FINAL EQUALIZED VALUE
Over \$1,000 and Non-Homestead 40%	Permanently Attached to Real Estate 33 1/4%			
		666	90	490

SOLD FOR TAXES	VALUATIONS BY SCHOOL DISTRICTS AS EQUALIZED BY DEPARTMENT OF TAXATION						Tax Including State Homestead	State Tax on Non-Homestead	SPECIAL TAXES	TOTAL TAXES	PAID	WHEN PAID	Number of Receipt	March Settlement 1953	June Settlement 1953	Penalty	November Settlement 1953	Penalty	Collections to First Monday in January 1954	Penalty	Delinquent on First Monday in January 1954	Total Delinquent Tax and Penalty	REMARKS
	District No.	District No.	District No.	District No.	District No.	District No.																	
5 SOLD FOR TAXES						666	150		14458		14608												PAID IN FULL OCT 22 1953 14139
6 SOLD FOR TAXES						90	20		1954		1974												1274
						490			10636		10636												PAID IN FULL APR 30 1953 3889
						490																	
						490																	
						490																	
						490																	
						490																	
						490																	
						490																	
						490																	
						490																	
						490																	
						490																	
						490																	
						490																	
						490																	
						490																	
						490																	
						490																	
						490																	
						490																	
						490																	
						490																	
						490																	
						490																	
						490																	
						490																	
						490																	
						490																	
						490																	
						490																	
						490																	
						490																	
						490																	
						490																	
						490																	
						490																	
						490																	
						490																	
						490																	
						490																	
						490																	
						490																	
						490																	
						490																	
						490																	
						490																	
						490																	
						490																	
						490																	
						490																	
						490																	
						490																	
						490																	
						490																	
						490																	
						490																	
						490																	
						490																	
						490																	
						490																	
						490																	
						490																	
						490																	
						490																	
						490																	
						490																	
						490																	
						490																	
						490																	
						490																	
						490																	
						490																	
						490																	
						490																	
						490																	
						490																	
						490																	
						490																	
						490																	
						490																	
						490																	

