

ASSESSMENT & TAX LIST 1962
Turtle Lake

SUMMARY OF TAX COLLECTION

Original Levy	- - - - -	\$ 30,327.36	
Additions	- - - - -	\$ 174.26	
			\$
Abatements	- - - - -	\$ 389.46	
			\$ 30,012.16

COLLECTIONS

March Settlement	- - - - -	\$ 6,053.77	
June Settlement	- - - - -	\$ 11,754.14	
November Settlement	- - - - -	\$ 9,722.22	
January Settlement	- - - - -	\$ 614.60	\$ 28,144.73
			\$
Over Collected	- - - - -	\$ 127.42	
Under Collected	- - - - -	\$	
Delinquent	- - - - -	\$ 204.83	\$
Total	- - - - -		\$ 30,012.16

Assessor's Return of Exempt Real Property in the _____ of _____ County of _____, Minnesota, for the Year 1962

FORM 2 MILLER-DAVIS CO., MINNEAPOLIS

NAMES OF OWNERS	DESCRIPTION	Sec. or Lot	Town or Block	Range	No. of Acres		FOR WHAT PURPOSE USED	TRUE AND FULL VALUATIONS				ASSESSED VALUATIONS		REMARKS
					Acres	100ths		LAND Exclusive of Structures and Improvements Dollars	BUILDINGS and Other Structures Dollars	MACHINERY Permanently Attached to Real Estate Dollars	TOTAL True and Full Value Dollars	Rural Including Machinery	All Other	
												33 1/3%	40%	
Hope Lutheran Church	North 7 Rods of W 11.5 of Twp 4 / N 1/4	13	141	30			Cemetery	15			15	3		
Mt. S. Railroad - Village/Lithy	1 1/2 acres in N 8 1/4 / N 1/4	31	141	30			public ground	15			15	3		

Real Estate

142-30
Green
Rocky
Point
Blue Water
Beach
Harbor
Springs
PERSONAL

Assessment Roll and Tax List of Real Property in the Town of Turtle Lake

Form SCD - MILLER-DAVIS CO., MINNEAPOLIS * Indicate Type of Property: R-Residential, C-Commercial, I-Industrial, U-Utility, F-Farm, L-Lakeshore, T-Timber, M-Mineral

Cass County, Minnesota, for Taxes for the Year 1962.

Table with columns: IN WHOSE NAME ASSESSED, DESCRIPTION OF PROPERTY, TRUE AND FULL VALUATIONS, ASSESSED VALUATIONS, and FINAL EQUALIZED VALUE. Includes handwritten entries for various property owners like Dairyland Elev. Co-op and Ben A. + Edna Mae Smith.

Table with columns: VALUATIONS BY SCHOOL DISTRICTS AS EQUALIZED BY DEPARTMENT OF TAXATION, TAXES, PAID, WHEN PAID, and REMARKS. Includes handwritten notes on tax payments and dates.

(CONT NEXT PAGE)

Paid Under Protest

Assessment Roll and Tax List of Real Property in the Town of Turtle Lake

Cass County, Minnesota, for Taxes for the Year 1962.

* Indicate Type of Property: R-Residential, C-Commercial, I-Industrial, U-Utility, F-Farm, L-Lakeshore, T-Timber, M-Mineral

Form 50D MILLER-DAVIS CO., MINNEAPOLIS

142-30

Table with columns: IN WHOSE NAME ASSESSED, DESCRIPTION OF PROPERTY, TRUE AND FULL VALUATIONS, ASSESSED VALUATIONS, and FINAL EQUALIZED VALUE. Includes handwritten entries for Roy C. + Helen M. Folkers, Inga B. Fuhr + Laura Murphy, etc.

Table with columns: VALUATIONS BY SCHOOL DISTRICTS AS EQUALIZED BY DEPARTMENT OF TAXATION, TAX INCLUDING STATE HOMESTEAD, SPECIAL TAXES, TOTAL TAXES, PAID, WHEN PAID, Number of Receipt, March Settlement, June Settlement, Penalty, November Settlement, Penalty, Collections to First Monday in January 1964, Delinquent on First Monday in January 1964, Total Delinquent Tax and Penalty, REMARKS.

Vertical text on the right edge of the page: Kings Green, Hockey Point, Blue Water, Harbor Springs, Personal.

LOT 1

LOT 2

1350'

1210.76'

Mille Lacs Maple Products, Inc.

#27107 (9)

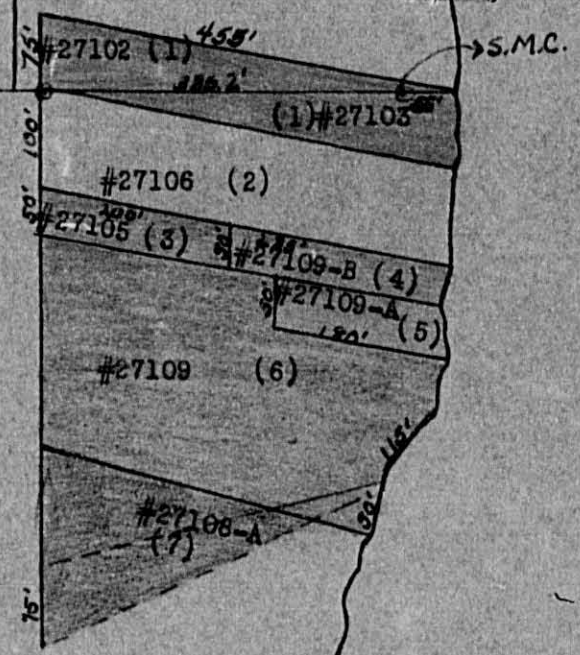
Fuhr

#27108 (8)

- (1) Folkers - .75 acres
- (2) Jefferis - .80 acres
- (3) Rickert - .25 acres
- (4) Rayer - .27 acres
- (5) McKenzie - .21 acres
- (6) Redebaugh - 1.72 acres
- (7) Hansen
- (8) Fuhr
- (9) Mille Lacs Maple Products, Inc.
19.59 acres

65'

1302.12'



LOT 2
15-142-30

HEECH LAKE

Assessment Roll and Tax List of Real Property in the Town of Turtle Lake, Cass County, Minnesota, for Taxes for the Year 1962.

Form SCD MILLER-DAVIS CO., MINNEAPOLIS

* Indicate Type of Property: R-Residential, C-Commercial, I-Industrial, U-Utility, F-Farm, L-Lakeshore, T-Timber, M-Mineral

142-30

Table with columns: IN WHOSE NAME ASSESSED, DESCRIPTION OF PROPERTY, TRUE AND FULL VALUATIONS, ASSESSED VALUATIONS, FINAL EQUALIZED VALUE. Includes handwritten entries for property owners like Edward + Mae Dean Durgan, W. H. + Irma Mallory, etc.

Table with columns: VALUATIONS BY SCHOOL DISTRICTS AS EQUALIZED BY DEPARTMENT OF TAXATION, TAXES, PAID, WHEN PAID, Number of Receipt, March Settlement, June Settlement, November Settlement, Collections to First Monday in January, Delinquent on First Monday in January, Total Delinquent Tax and Penalty, REMARKS. Includes handwritten notes and dates.

Vertical text on the right edge of the page: Kanes Green, Shore, Point, Pine water, Beach, Harbor, Springs, PERSONAL.

Assessment Roll and Tax List of Real Property in the Town of Turtle Lake

* Indicate Type of Property: R-Residential, C-Commercial, I-Industrial, U-Utility, F-Farm, L-Lakeshore, T-Timber, M-Mineral

Form SCID MILLER-DAVIS CO., MINNEAPOLIS

Cass County, Minnesota, for Taxes for the Year 1962.

Table with columns: IN WHOSE NAME ASSESSED, SUBDIVISION, No. School District, Ind. case Home-stand, Agri. or Sena. Recr. Yes or No, * Indicate Type of Property, TRUE AND FULL VALUATIONS (LAND, BUILDINGS, MACHINERY, TOTAL), ASSESSED VALUATIONS (RURAL, ALL OTHER, MACHINERY, Seasonal and Recreational Cabins, TOTAL ASSESSED VALUE, Total Assessed Value as Equalized by the Board of Review), FINAL EQUALIZED VALUE.

Table with columns: SOLD FOR TAXES, VALUATIONS BY SCHOOL DISTRICTS AS EQUALIZED BY DEPARTMENT OF TAXATION (District No., Rate, Mills), Tax Including State Homestead, State Tax on Non-Homestead, SPECIAL TAXES, TOTAL TAXES, PAID, WHEN PAID, Number of Receipt, March Settlement 1963, June Settlement 1963, Penalty, November Settlement 1963, Collections to First Monday in January 1964, Delinquent on First Monday in January 1964, Total Delinquent Tax and Penalty, REMARKS.

Vertical text on the right edge of the page: Kings Green, Hockey Point, Beach, Harbor Springs, PERSONAL.

Assessment Roll and Tax List of Real Property in the Town of Turtle Lake

* Indicate Type of Property: R-Residential, C-Commercial, I-Industrial, U-Utility, F-Farm, L-Lakeshore, T-Timber, M-Mineral

Cass County, Minnesota, for Taxes for the Year 1962.

Form 300 - MILLER-DAVIS CO., MINNEAPOLIS

Table with columns: IN WHOSE NAME ASSESSED, DESCRIPTION OF PROPERTY, TRUE AND FULL VALUATIONS, ASSESSED VALUATIONS, VALUATIONS BY SCHOOL DISTRICTS AS EQUALIZED BY DEPARTMENT OF TAXATION, TAXES, PAID, WHEN PAID, Number of Receipt, March Settlement 1961, June Settlement 1961, November Settlement 1961, Collections to First Monday in January 1964, Delinquent on First Monday in January 1964, Total Delinquent Tax and Penalty, REMARKS.

(CONT NEXT PAGE)

Vertical text on the right edge: Kings Green, Rocky Point, Pine Water Beach, Harbor Springs, PERSONAL

Assessment Roll and Tax List of Real Property in the Town of Turtle Lake, Minnesota

Cass County, Minnesota, for Taxes for the Year 1962.

142-30

Table with columns: IN WHOSE NAME ASSESSED, SUBDIVISION, Sec. or Lot, Town or Block, Rng., Acres of Land, No. School District, Ind. case Home-stead, Agri. Rec., Ind. case Type of Property, TRUE AND FULL VALUATIONS (LAND, BUILDINGS, MACHINERY, TOTAL), ASSESSED VALUATIONS (RURAL, ALL OTHER, MACHINERY, Seasonal and Recreational Cabins, TOTAL ASSESSED VALUE), Total Assessed Value as Equalized by the Board of Review, FINAL EQUALIZED VALUE.

Table with columns: SOLD FOR TAXES, VALUATIONS BY SCHOOL DISTRICTS AS EQUALIZED BY DEPARTMENT OF TAXATION (District No., Rate, Mills), Tax including State Homestead, State Tax on Non-Homestead, SPECIAL TAXES, TOTAL TAXES, PAID, WHEN PAID, Number of Receipt, March Settlement 1963, June Settlement 1963, Penalty, November Settlement 1963, Collections to First Monday in January 1964, Delinquent on First Monday in January 1964, Total Delinquent Tax and Penalty, REMARKS.

Vertical text on the right edge: Kings Green Shores, Rocky Point, Pine Harbor Beach, Harbor Springs, Personal.

Assessment Roll and Tax List of Real Property in the Town of Turtle Lake

* Indicate Type of Property: R-Residential, C-Commercial, I-Industrial, U-Utility, F-Farm, L-Lakeshore, T-Timber, M-Mineral

Form 50 MILLER-DAVIS CO., MINNEAPOLIS

IN WHOSE NAME ASSESSED	DESCRIPTION OF PROPERTY				No. School District	Indicate Homestead Yes or No	Agr. or Recr. Yes or No	* Indicate Type of Property	TRUE AND FULL VALUATIONS								TOTAL ASSESSED VALUE	Total Assessed Value as Equalized by the Board of Review	FINAL EQUALIZED VALUE
	SUBDIVISION	Sec. or Lot	Town or Block	Number of Acres of Land					LAND EXCLUSIVE OF STRUCTURES AND IMPROVEMENTS				ASSESSED VALUATIONS						
									Buildings and Other Structures	Machinery Permanently Attached to Real Estate	TOTAL True and Full Value	Homestead Up to \$4,000 20%	Over \$4,000 and Non-Homestead 33 1/3%	Timber Land Class 3e 20%	Homestead Up to \$4,000 25%	Over \$4,000 and Non-Homestead 40%			
Albert Thomas	PART OF Gov't Lot 7- Sec. 31-141-30	1		Acres 100ths	119	no	no	T	Dollars	Dollars	Dollars	Dollars	Dollars	Dollars	Dollars	Dollars	Dollars		
"	"	2			no	no	T	24			24	8			8				
"	"	3			no	no	T	24			24	8			8				
"	"	4			no	no	T	24			24	8			8				
"	"	5			no	no	T	24			24	8			8				
"	"	6			no	no	T	24			24	8			8				
"	"	7			no	no	T	24			24	8			8				
"	"	8			no	no	T	24			24	8			8				
"	"	9			no	no	T	24			24	8			8				
"	"	10			no	no	T	24			24	8			8				
"	"	11			no	no	T	24			24	8			8				
"	"	12			no	no	T	24			24	8			8				
"	"	13			no	no	T	24			24	8			8				
"	"	14			no	no	T	24			24	8			8				
"	"	15			no	no	T	24			24	8			8				
"	"	16			no	no	T	24			24	8			8				
"	"	17			no	no	T	24			24	8			8				
"	"	18			no	no	T	24			24	8			8				
"	"	19			no	no	T	24			24	8			8				
"	"	20			no	no	T	24			24	8			8				
								480			480	160			160				

Cass County, Minnesota, for Taxes for the Year 1962.

SOLD FOR TAXES	VALUATIONS BY SCHOOL DISTRICTS AS EQUALIZED BY DEPARTMENT OF TAXATION						State Tax on Non-Homestead	SPECIAL TAXES	SPECIAL TAXES	TOTAL TAXES	PAID	WHEN PAID	Number of Receipt	March Settlement 1963	June Settlement 1963	Penalty 1963	November Settlement 1963	Penalty 1963	Collections to First Monday in January 1964	Penalty 1964	Delinquent on First Monday in January 1964	Total Delinquent Tax and Penalty	REMARKS
	District No.	District No.	District No.	District No.	District No.	District No.																	
	Rate	Rate	Rate	Rate	Rate	Rate																	
1																							
2																							
3																							
4																							
5																							
6																							
7																							
8																							
9																							
10																							
11																							
12																							
13																							
14																							
15																							
16																							
17																							
18																							
19																							
20																							

142-80

Kings Green Shores

Rocky Point

Blue Water Beach

Harbor Springs

Personals

