

ASSESSMENT & TAX LIST - 1956

Turtle Lake

Assessor's Return of Exempt Real Property in the _____ of _____ County of _____, Minnesota, for the Year 1956

FORM 2 MILLER-DAY COMPANY, MINNEAPOLIS

NAMES OF OWNERS	DESCRIPTION				No. of Acres Acres 100ths	FOR WHAT PURPOSE USED	TRUE AND FULL VALUATIONS				ASSESSED VALUATIONS		REMARKS	
	SUBDIVISION	Sec. or Lot	Town or Block	Range			LAND Exclusive of Structures and Improvements Dollars	BUILDINGS and Other Structures Dollars	MACHINERY Permanently Attached to Real Estate Dollars	TOTAL True and Full Value Dollars	Rural Including Machinery	All Other		
											33 1/3 %	40 %		
Hope Lutheran Church	N. 1/2 Sec. of W. 11 1/2 Sec. of T. 141 R. 30													
	NW 1/4 of NW 1/4													
M. & D. Ry. - Village of Lathrop	1/2 Sec. of T. 141 R. 30													

Real Estate
 142-30
 Lathrop Point
 King's Green Shore
 Rocky Point

Assessment Roll and Tax List of Real Property in the Town of *Little Lake*, of *Little Lake*

Cass County, Minnesota, for Taxes for the Year 1956.

Form 5C (56) ILLINOIS STATE DEPARTMENT OF REVENUE * Indicate Type of Property: R-Residential, C-Commercial, I-Industrial, U-Utility, F-Farm, L-Lakeshore, T-Timber, M-Mineral

Table with columns: IN WHOSE NAME ASSESSED, TO WHOM TRANSFERRED, DESCRIPTION OF PROPERTY, TRUE AND FULL VALUATIONS, ASSESSED VALUATIONS, VALUATIONS BY SCHOOL DISTRICTS AS EQUALIZED BY DEPARTMENT OF TAXATION, TAXES, PAID, WHEN PAID, etc.

Assessment Roll and Tax List of Real Property in the Town of North Lake

Cass County, Minnesota, for Taxes for the Year 1956.

Form 503 (56) WILCO-DAVIS COMPANY, MINNEAPOLIS * Indicate Type of Property: R-Residential, C-Commercial, I-Industrial, U-Utility, F-Farm, L-Lakeshore, T-Timber, M-Mineral

Table with columns: IN WHOSE NAME ASSESSED, TO WHOM TRANSFERRED, SUBDIVISION, TRUE AND FULL VALUATIONS, ASSESSED VALUATIONS, VALUATIONS BY SCHOOL DISTRICTS AS EQUALIZED BY DEPARTMENT OF TAXATION, TAXES, PAID, WHEN PAID, etc.

Assessment Roll and Tax List of Real Property in the Town of Justice Lake

* Indicate Type of Property: R-Residential, C-Commercial, I-Industrial, U-Utility, F-Farm, L-Lakeshore, T-Timber, M-Mineral

Form 5C (56) BILLS-BASE COUNTY, MINNESOTA

Cass County, Minnesota, for Taxes for the Year 1956.

Table with columns: IN WHOSE NAME ASSESSED, TO WHOM TRANSFERRED, DESCRIPTION OF PROPERTY, TRUE AND FULL VALUATIONS, ASSESSED VALUATIONS, VALUATIONS BY SCHOOL DISTRICTS AS EQUALIZED BY DEPARTMENT OF TAXATION, SOLD FOR TAXES, PAID, WHEN PAID, Number of Receipt, March Settlement 1957, June Settlement 1957, November Settlement 1957, Collections to First Monday in January 1958, Delinquent on First Monday in January 1958, Total Delinquent Tax and Penalty, REMARKS.

142-30
Fish's Point
King's Green Shore
Rocky Point

Assessment Roll and Tax List of Real Property in the Town of Turtle Lake

Cass County, Minnesota, for Taxes for the Year 1956.

Form SC (56) - JULY 1954 EDITION, MINNAPOLIS

* Indicate Type of Property: R-Residential, C-Commercial, I-Industrial, U-Utility, F-Farm, L-Lakeshore, T-Timber, M-Mineral

IN WHOSE NAME ASSESSED	TO WHOM TRANSFERRED	DESCRIPTION OF PROPERTY				No. School District	Indicate Homestead Yes or No	Indicate Agricultural Yes or No	Indicate Type of Property	TRUE AND FULL VALUATIONS				ASSESSED VALUATIONS					Total Assessed Value as Equalized by the Board of Review	FINAL EQUALIZED VALUE	SOLD FOR TAXES	VALUATIONS BY SCHOOL DISTRICTS AS EQUALIZED BY DEPARTMENT OF TAXATION						Tax including State Homestead	State Tax on Non-Homestead	SPECIAL TAXES	TOTAL TAXES	PAID	WHEN PAID	Number of Receipt	March Settlement 1957	June Settlement 1957	Penalty	November Settlement 1957	Penalty	Collections to First Monday in January 1958	Penalty	Delinquent on First Monday in January 1958	Total Delinquent Tax and Penalty	REMARKS			
		SUBDIVISION	Sec. or Lot	Town or Block	Rng.					Number of Acres of Land	LAND EXCLUSIVE OF STRUCTURES AND IMPROVEMENTS	BUILDINGS AND OTHER STRUCTURES	MACHINERY Permanently Attached to Real Estate	TOTAL True and Full Value	RURAL			ALL OTHER				MACHINERY Permanently Attached to Real Estate	TOTAL ASSESSED VALUE	District No.	District No.	District No.	District No.																		District No.	District No.	
															Homestead Up to \$4,000 20%	Over \$4,000 and Non-Homestead 33 1/3%	Timber Land Class 3c 20%	Homestead Up to \$4,000 25%																													Over \$4,000 and Non-Homestead 40%
Nels Bergly		NE 1/4 of NE 1/4	13	141	30	40	5	Year	F	220			220	44	44	1	H	44					1006				1006	1	PAID IN FULL	MAY 31 1957																	
"	"	NW 1/4 of NE 1/4				40	"	"	"	195	270		465	93	93	2	H	93					2128				2128	2	PAID IN FULL	MAY 31 1957	11977																
Adolph M. Bredeson		SW 1/4 of NE 1/4				40	"	"	"	200			200	40	40	3	H	40					916				916	3	2nd Half Paid	OCT 17 1957	15387																
"	"	SE 1/4 of NE 1/4				40	"	"	"	240	325		565	113	113	4	H	113					2586				2586	4	1st Half Paid	MAY 31 1957	8191																
Roy G. Stark & Helen Stark		NE 1/4 of NW 1/4				40	Year	"	R	220			220	44	44	6	H	44					1006				1006	6	PAID IN FULL	FEB 4 1957																	
"	"	NW 1/4 of NW 1/4				39	Year	"	R	220			220	44	44	7	H	44					1006				1006	7	PAID IN FULL	FEB 4 1957																	
"	"	SW 1/4 of NW 1/4				40	"	"	T	220			220	44	44	8	H	44					1006				1006	8	PAID IN FULL	FEB 4 1957	1487																
"	"	SE 1/4 of NW 1/4				40	"	"	"	220			220	44	44	9	H	44					1006				1006	9	PAID IN FULL	FEB 4 1957																	
Hope Lutheran Church		N. 7. rds. of st 1 1/2 rds. of NW 1/4 of NW 1/4 (Cemetery)														10																															
State of Minnesota		NE 1/4 of SW 1/4														11																															
State of Minnesota		NW 1/4 of SW 1/4														12																															
State of Minnesota		SW 1/4 of SW 1/4														13																															
		SE 1/4 of SW 1/4														14																															
																15																															
Apch Share		NE 1/4 of SE 1/4				40	70	Year	T	231			231	77	77	16							1762	42		1804	16	PAID IN FULL	MAY 21 1957																		
"	"	NW 1/4 of SE 1/4				40	"	"	"	183			183	61	61	17							1396	32		1428	17	PAID IN FULL	MAY 21 1957	6537																	
State of Minnesota		SW 1/4 of SE 1/4														18																															
		SE 1/4 of SE 1/4														19																															
																20																															
						399				2149	595		2744	466	138								H 466																								
																							13818	74		13892																					
																							604																								

142-30 Fish's Point King's Green Shore Rocky Point

Assessment Roll and Tax List of Real Property in the Town of Justice Lake

Cass County, Minnesota, for Taxes for the Year 1956.

Form 5C (56) SHOWN-BY COMPANY, MINNEAPOLIS

* Indicate Type of Property: R-Residential, C-Commercial, I-Industrial, U-Utility, F-Farm, L-Lakeshore, T-Timber, M-Mineral

Table with columns: IN WHOSE NAME ASSESSED, TO WHOM TRANSFERRED, DESCRIPTION OF PROPERTY, TRUE AND FULL VALUATIONS, ASSESSED VALUATIONS, VALUATIONS BY SCHOOL DISTRICTS AS EQUALIZED BY DEPARTMENT OF TAXATION, SOLD FOR TAXES, PAID, WHEN PAID, Number of Receipt, March Settlement 1957, June Settlement 1957, November Settlement 1957, Collections to First Monday in January 1958, Delinquent on First Monday in January 1958, Total Delinquent Tax and Penalty, REMARKS.

Assessment Roll and Tax List of Real Property in the Town of South Lake, Cass County, Minnesota, for Taxes for the Year 1956.

Cass County, Minnesota, for Taxes for the Year 1956.

Form 30D (56) MILLER-BAYNE COMPANY, MINNEAPOLIS

Table with columns: IN WHOSE NAME ASSESSED, TO WHOM TRANSFERRED, DESCRIPTION OF PROPERTY, TRUE AND FULL VALUATIONS, ASSESSED VALUATIONS, VALUATIONS BY SCHOOL DISTRICTS AS EQUALIZED BY DEPARTMENT OF TAXATION, SOLD FOR TAXES, PAID, WHEN PAID, Number of Receipt, March Settlement 1957, June Settlement 1957, November Settlement 1957, Collections to First Monday in January 1958, Delinquent on First Monday in January 1958, Total Delinquent Tax and Penalty, REMARKS.

U. S. of America
U. S. of America
Henry Bakker
U. S. of America
U. S. of America
State of Minnesota
U. S. of America
U. S. of America
U. S. of America
State of Minnesota
U. S. of America
U. S. of America
U. S. of America
U. S. of America
State of Minnesota
U. S. of America
U. S. of America
State of Minnesota

1
2
3
4
5
6
7
8
9
10
11
12
13
14
15
16
17
18
19
20

NE 1/4 of NE 1/4
NW 1/4 of NE 1/4
SW 1/4 of NE 1/4
SE 1/4 of NE 1/4
SW 1/2 of SE 1/4 of NE 1/4
NW 1/4 of NW 1/4
SW 1/4 of NW 1/4
SE 1/4 of NW 1/4 Lot 4
SW 1/2 of NE 1/4 of NW 1/4 Lot 3
NE 1/4 of SW 1/4 Lot 6
NW 1/4 of SW 1/4 Lot 5
SW 1/4 of SW 1/4
SE 1/4 of SW 1/4
Lot 2
NE 1/4 of SE 1/4
NW 1/4 of SE 1/4 Lot 7
SW 1/4 of SE 1/4
SE 1/4 of SE 1/4 Lot 8

5
5
T
T
T
T
T
T
T
T
T
T
T
T
T
T
T
T
T
T

99
99
99
99
99
99
99
99
99
99
99
99
99
99
99
99
99
99
99

33
33
33
33
33
33
33
33
33
33
33
33
33
33
33
33
33
33
33

33
33
33
33
33
33
33
33
33
33
33
33
33
33
33
33
33
33
33

756
756
756
756
756
756
756
756
756
756
756
756
756
756
756
756
756
756
756

18
18
18
18
18
18
18
18
18
18
18
18
18
18
18
18
18
18
18

774
774
774
774
774
774
774
774
774
774
774
774
774
774
774
774
774
774
774

387
387
387
387
387
387
387
387
387
387
387
387
387
387
387
387
387
387
387

387
387
387
387
387
387
387
387
387
387
387
387
387
387
387
387
387
387
387

1957
1957
1957
1957
1957
1957
1957
1957
1957
1957
1957
1957
1957
1957
1957
1957
1957
1957
1957

1957
1957
1957
1957
1957
1957
1957
1957
1957
1957
1957
1957
1957
1957
1957
1957
1957
1957
1957

1958
1958
1958
1958
1958
1958
1958
1958
1958
1958
1958
1958
1958
1958
1958
1958
1958
1958
1958

1958
1958
1958
1958
1958
1958
1958
1958
1958
1958
1958
1958
1958
1958
1958
1958
1958
1958
1958

1958
1958
1958
1958
1958
1958
1958
1958
1958
1958
1958
1958
1958
1958
1958
1958
1958
1958
1958

1958
1958
1958
1958
1958
1958
1958
1958
1958
1958
1958
1958
1958
1958
1958
1958
1958
1958
1958

1958
1958
1958
1958
1958
1958
1958
1958
1958
1958
1958
1958
1958
1958
1958
1958
1958
1958
1958

1958
1958
1958
1958
1958
1958
1958
1958
1958
1958
1958
1958
1958
1958
1958
1958
1958
1958
1958

1958
1958
1958
1958
1958
1958
1958
1958
1958
1958
1958
1958
1958
1958
1958
1958
1958
1958
1958

1958
1958
1958
1958
1958
1958
1958
1958
1958
1958
1958
1958
1958
1958
1958
1958
1958
1958
1958

1958
1958
1958
1958
1958
1958
1958
1958
1958
1958
1958
1958
1958
1958
1958
1958
1958
1958
1958

1958
1958
1958
1958
1958
1958
1958
1958
1958
1958
1958
1958
1958
1958
1958
1958
1958
1958
1958

1958
1958
1958
1958
1958
1958
1958
1958
1958
1958
1958
1958
1958
1958
1958
1958
1958
1958
1958

1958
1958
1958
1958
1958
1958
1958
1958
1958
1958
1958
1958
1958
1958
1958
1958
1958
1958
1958

1958
1958
1958
1958
1958
1958
1958
1958
1958
1958
1958
1958
1958
1958
1958
1958
1958
1958
1958

1958
1958
1958
1958
1958
1958
1958
1958
1958
1958
1958
1958
1958
1958
1958
1958
1958
1958
1958

142-30
Tush's Point
King's Green Shore
Rocky Point

Assessment Roll and Tax List of Real Property in the Town of Turtle Lake

Indicate Type of Property: R-Residential, C-Commercial, I-Industrial, U-Utility, F-Farm, L-Lakeshore, T-Timber, M-Mineral

Cass County, Minnesota, for Taxes for the Year 1956.

Table with columns: IN WHOSE NAME ASSESSED, TO WHOM TRANSFERRED, DESCRIPTION OF PROPERTY, TRUE AND FULL VALUATIONS, ASSESSED VALUATIONS, VALUATIONS BY SCHOOL DISTRICTS AS EQUALIZED BY DEPARTMENT OF TAXATION, TAXES, PAID, WHEN PAID, Number of Receipt, March Settlement 1957, June Settlement 1957, Penalty, November Settlement 1957, Penalty, Collections to First Monday in January 1958, Penalty, Delinquent on First Monday in January 1958, Total Delinquent Tax and Penalty, REMARKS.

142-30
Rush's Point
King's Green Shore
Rocky Point

Assessment Roll and Tax List of Real Property in the Town of Turtle Lake

Indicate Type of Property: R-Residential, C-Commercial, I-Industrial, U-Utility, F-Farm, L-Lakeshore, T-Timber, M-Mineral

Cass County, Minnesota, for Taxes for the Year 1956.

Table with columns: IN WHOSE NAME ASSESSED, TO WHOM TRANSFERRED, DESCRIPTION OF PROPERTY, TRUE AND FULL VALUATIONS, ASSESSED VALUATIONS, VALUATIONS BY SCHOOL DISTRICTS AS EQUALIZED BY DEPARTMENT OF TAXATION, TAXES, PAID, WHEN PAID, Number of Receipt, March Settlement 1957, June Settlement 1957, Penalty, November Settlement 1957, Collections to First Monday in January 1958, Delinquent on First Monday in January 1958, Total Delinquent Tax and Penalty, REMARKS.

(Continued on next page)

142-30 Bush's Point King's Green Shore Rocky Point

Assessment Roll and Tax List of Real Property in the Town of Turtle Lake

* Indicate Type of Property: R-Residential, C-Commercial, I-Industrial, U-Utility, F-Farm, L-Lakeshore, T-Timber, M-Mineral

Cass County, Minnesota, for Taxes for the Year 1956.

Table with columns: IN WHOSE NAME ASSESSED, TO WHOM TRANSFERRED, DESCRIPTION OF PROPERTY, TRUE AND FULL VALUATIONS, ASSESSED VALUATIONS, VALUATIONS BY SCHOOL DISTRICTS AS EQUALIZED BY DEPARTMENT OF TAXATION, SOLD FOR TAXES, PAID, WHEN PAID, Number of Receipt, March Settlement 1957, June Settlement 1957, Penalty, November Settlement 1957, Penalty, Collections to First Monday in January 1958, Penalty, Delinquent on First Monday in January 1958, Total Delinquent Tax and Penalty, REMARKS.

142-30

Bush's Point

King's Green Shore

Rocky Point

Assessment Roll and Tax List of Real Property in the Town of Turtle Lake

Indicate Type of Property: R-Residential, C-Commercial, I-Industrial, U-Utility, F-Farm, L-Lakeshore, T-Timber, M-Mineral

Cass County, Minnesota, for Taxes for the Year 1956.

Form SCD-156 (5-54) BULLOCK-BRYAN COMPANY, MINNEAPOLIS

Table with columns: IN WHOSE NAME ASSESSED, TO WHOM TRANSFERRED, DESCRIPTION OF PROPERTY, TRUE AND FULL VALUATIONS, ASSESSED VALUATIONS, VALUATIONS BY SCHOOL DISTRICTS AS EQUALIZED BY DEPARTMENT OF TAXATION, TAXES, PAID, WHEN PAID, Number of Receipt, March Settlement 1957, June Settlement 1957, Penalty, November Settlement 1957, Penalty, Collections to First Monday in January 1956, Penalty, Delinquent on First Monday in January 1956, Total Delinquent Tax and Penalty, REMARKS.

142-30

Bush's Point

King's Green Shore

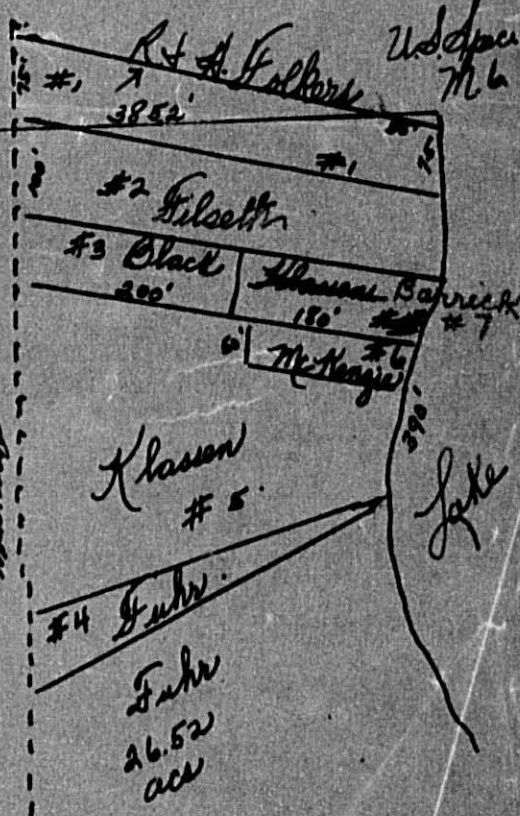
Rocky Point

Lot # 2
Dec 15-14 2-30

Line between Lot 1 & 2

2 1/2 of Lot # 2
Mills for maple production
20 acres

W. d. line of 1/2 of Lot
McKenzie



#1 Folkers	38 ac.
#2 Filseth	80 ac
#3 Black	.25 ac.
#4 Fuhr.	.38 ac
#5 Klassen	2 acs
#6 McKenzie	.21 acs

CK 5-1-56.

Assessment Roll and Tax List of Real Property in the Town of Turtle Lake

Indicate Type of Property: R-Residential, C-Commercial, I-Industrial, U-Utility, F-Farm, L-Lakeshore, T-Timber, M-Mineral

Form SCID (56) - MILLER-BATE COMPANY, MINNEAPOLIS

Table with columns: IN WHOSE NAME ASSESSED, TO WHOM TRANSFERRED, DESCRIPTION OF PROPERTY, TRUE AND FULL VALUATIONS, ASSESSED VALUATIONS, and FINAL EQUALIZED VALUE. Includes handwritten entries for various property owners like E. V. & Helen Marie Hockett, M. E. Quint, and others.

Cass County, Minnesota, for Taxes for the Year 1956.

Table with columns: SOLD FOR TAXES, VALUATIONS BY SCHOOL DISTRICTS AS EQUALIZED BY DEPARTMENT OF TAXATION, SPECIAL TAXES, TOTAL TAXES, PAID, WHEN PAID, Number of Receipt, March Settlement 1957, June Settlement 1957, Penalty, November Settlement 1957, Penalty, Collections to First Monday in January 1955, Penalty, Delinquent on First Monday in January 1955, Total Delinquent Tax and Penalty, and REMARKS. Includes handwritten notes and calculations.

142-30

Bush's Point

King's Green Shore

Rocky Point

Assessment Roll and Tax List of Real Property in the Town of Turtle Lake

Cass County, Minnesota, for Taxes for the Year 1956.

Indicate Type of Property: R-Residential, C-Commercial, I-Industrial, U-Utility, F-Farm, L-Lakeshore, T-Timber, M-Mineral

Table with columns: IN WHOSE NAME ASSESSED, TO WHOM TRANSFERRED, DESCRIPTION OF PROPERTY, TRUE AND FULL VALUATIONS, ASSESSED VALUATIONS, VALUATIONS BY SCHOOL DISTRICTS AS EQUALIZED BY DEPARTMENT OF TAXATION, SOLD FOR TAXES, PAID, WHEN PAID, Number of Receipt, March Settlement 1957, June Settlement 1957, November Settlement 1957, Collections to First Monday in January 1958, Delinquent on First Monday in January 1958, Total Delinquent Tax and Penalty, REMARKS.

142-30

Bush's Point

King's Green Shore

Rocky Point

Glenn Bennett
Janet Hopson & John H. Hopson, Jr.

PAID IN FULL
OCT 18 1957
MAY 31 1957

Assessment Roll and Tax List of Real Property in the Town of Turtle Lake

Indicate Type of Property: R-Residential, C-Commercial, I-Industrial, U-Utility, F-Farm, L-Lakeshore, T-Timber, M-Mineral

Cass County, Minnesota, for Taxes for the Year 1956.

Table with columns: IN WHOSE NAME ASSESSED, TO WHOM TRANSFERRED, DESCRIPTION OF PROPERTY, TRUE AND FULL VALUATIONS, ASSESSED VALUATIONS, VALUATIONS BY SCHOOL DISTRICTS AS EQUALIZED BY DEPARTMENT OF TAXATION, TAXES, PAID, WHEN PAID, Number of Receipt, March Settlement 1957, June Settlement 1957, November Settlement 1957, Collections to First Monday in January 1958, Delinquent on First Monday in January 1958, Total Delinquent Tax and Penalty, REMARKS.

142-30

Bush's Point

King's Green Shore

Rocky Point

Assessment Roll and Tax List of Real Property in the Town of Turtle Lake

* Indicate Type of Property: R-Residential, C-Commercial, I-Industrial, U-Utility, F-Farm, L-Lakeshore, T-Timber, M-Mineral

Form 500 (56) MINNESOTA DEPARTMENT OF REVENUE

Table with columns: IN WHOSE NAME ASSESSED, TO WHOM TRANSFERRED, DESCRIPTION OF PROPERTY, TRUE AND FULL VALUATIONS, ASSESSED VALUATIONS, and FINAL EQUALIZED VALUE.

Cass County, Minnesota, for Taxes for the Year 1956.

Table with columns: VALUATIONS BY SCHOOL DISTRICTS AS EQUALIZED BY DEPARTMENT OF TAXATION, TAXES, PAID, WHEN PAID, and various tax-related fields.

142-30

Bush's Point

King's Green Shore

Rocky Point

Assessment Roll and Tax List of Real Property in the Town of LITTLE LAKE

Indicate Type of Property: R-Residential, C-Commercial, I-Industrial, U-Utility, F-Farm, L-Lakeshore, T-Timber, M-Mineral

Cass County, Minnesota, for Taxes for the Year 1956.

Table with columns for property description, valuations, taxes, and payments. Includes handwritten entries for names like Bruce Liberta, Peder A. Becken, and Lot numbers.

142-30

Bush's Point

King's Green Shore

Rocky Point

Assessment Roll and Tax List of Real Property in the Town of Turtle Lake

Indicate Type of Property: R-Residential, C-Commercial, I-Industrial, U-Utility, F-Farm, L-Lakeshore, T-Timber, M-Mineral

Cass County, Minnesota, for Taxes for the Year 1956.

Table with columns for IN WHOSE NAME ASSESSED, TO WHOM TRANSFERRED, DESCRIPTION OF PROPERTY, TRUE AND FULL VALUATIONS, ASSESSED VALUATIONS, VALUATIONS BY SCHOOL DISTRICTS AS EQUALIZED BY DEPARTMENT OF TAXATION, and TAXES. Includes handwritten entries for various lots and names like Charles G. Hutchinson, Arthur J. & Anna C. Dallaire, Mary Jane Phelps, etc.

(Continued on next page)

142-30

Bush's Point

King's Green Shore

Rocky Point

Assessment Roll and Tax List of Real Property in the Town of Turtle Lake

* Indicate Type of Property: R-Residential, C-Commercial, I-Industrial, U-Utility, F-Farm, L-Lakeshore, T-Timber, M-Mineral

Form 5CD (56) BILLS-DAVIS COMPANY, MINNEAPOLIS

Table with columns: IN WHOSE NAME ASSESSED, TO WHOM TRANSFERRED, DESCRIPTION OF PROPERTY, TRUE AND FULL VALUATIONS, ASSESSED VALUATIONS, FINAL EQUALIZED VALUE. Includes handwritten entries for lots 6-17 and a summary row at the bottom.

Cass County, Minnesota, for Taxes for the Year 1956.

Table with columns: SOLD FOR TAXES, VALUATIONS BY SCHOOL DISTRICTS AS EQUALIZED BY DEPARTMENT OF TAXATION, Tax including State Homestead, State Tax on Non-Homestead, SPECIAL TAXES, TOTAL TAXES, PAID, WHEN PAID, Number of Receipt, March Settlement 1957, June Settlement 1957, Penalty, November Settlement 1957, Penalty, Collections to First Monday in January 1958, Penalty, Delinquent on First Monday in January 1958, Total Delinquent Tax and Penalty, REMARKS. Includes handwritten entries for lots 10-15 and a summary row at the bottom.

142-30

Bush's Point

King's Green Shore

Rocky Point

Assessment Roll and Tax List of Real Property in the Town of Turtle Lake, Cass County, Minnesota, for Taxes for the Year 1956.

Form 50 (56) BILLS-BAYNE COMPANY, MINNEAPOLIS

* Indicate Type of Property: R-Residential, C-Commercial, I-Industrial, U-Utility, F-Farm, L-Lakeshore, T-Timber, M-Mineral

Main table with columns: IN WHOSE NAME ASSESSED, TO WHOM TRANSFERRED, DESCRIPTION OF PROPERTY, TRUE AND FULL VALUATIONS, ASSESSED VALUATIONS, VALUATIONS BY SCHOOL DISTRICTS AS EQUALIZED BY DEPARTMENT OF TAXATION, TAXES, PAID, WHEN PAID, Number of Receipt, March Settlement 1957, June Settlement 1957, November Settlement 1957, Collections to First Monday in January 1958, Delinquent on First Monday in January 1958, Total Delinquent Tax and Penalty, REMARKS.

142-30

Bush's Point

King's Green Shore

Rocky Point

Assessment Roll and Tax List of Real Property in the Town of Turtle Lake

* Indicate Type of Property: R-Residential, C-Commercial, I-Industrial, U-Utility, F-Farm, L-Lakeshore, T-Timber, M-Mineral

Cass County, Minnesota, for Taxes for the Year 1956.

Table with columns: IN WHOSE NAME ASSESSED, TO WHOM TRANSFERRED, SUBDIVISION, DESCRIPTION OF PROPERTY, TRUE AND FULL VALUATIONS, ASSESSED VALUATIONS, VALUATIONS BY SCHOOL DISTRICTS AS EQUALIZED BY DEPARTMENT OF TAXATION, SOLD FOR TAXES, SPECIAL TAXES, TOTAL TAXES, PAID, WHEN PAID, Number of Receipt, March Settlement 1957, June Settlement 1957, Penalty, November Settlement 1957, Penalty, Collections to First Monday in January 1958, Penalty, Delinquent on First Monday in January 1958, Total Delinquent Tax and Penalty, REMARKS.

142-30
Bush's Point

King's Green Shore
Rocky Point

