

ASSESSMENT & TAX LIST
Turtle Lake
1953

REAL PROPERTY BECOMING SUBJECT TO TAXATION SINCE THE LAST PREVIOUS ASSESSMENT OR OMITTED FROM ASSESSMENT ROLLS THE PREVIOUS YEARS.
Assessment of Taxable Real Property in the _____ of _____, Minn., for the Year 1953.

Form 314 MILLER-GALT SOURCE, MINNEAPOLIS

NAME OF OWNER	School District	DESCRIPTION OF PROPERTY					Indicate Homestead Yes or No	Indicate Agricultural Yes or No	TRUE AND FULL VALUATIONS				ASSESSED VALUATIONS						FINAL EQUALIZED VALUE	
		SUBDIVISION	Sec. or Lot	Twp. or Block	Rng.	Number of Acres of Land			LAND Exclusive of Structures and Improvements	BUILDINGS and Other Structures	MACHINERY Permanently Attached to Real Estate	TOTAL True and Full Value	RURAL		ALL OTHER		MACHINERY Permanently Attached to Real Estate	TOTAL ASSESSED VALUE		Dollars
													Acres	100ths	Homestead Up to \$4,000 20%	Over \$4,000 and Non-Homestead 33 1/3%				
1																				
2																				
3																				
4																				
5																				
6																				
7																				
8																				
					Total No. of Acres															
					Total Value as Equalized by															
					Total Value as Assessed by															

SUMMARY OF TAX COLLECTION

Original Levy	- - - -	\$ 8,969.20	
Additions	- - - -	\$ _____	
		\$ 8,969.20	
Abatements	- - - -	\$ 86.12	
		\$ 8,883.08	
COLLECTIONS			
March Settlement	- - - -	\$ 1,936.24	
June Settlement	- - - -	\$ 4,147.54	
November Settlement	- - - -	\$ 2,230.99	
January Settlement	- - - -	\$ 32.01	\$ 8,346.78
		\$ 5,363.30	
Over Collected	- - - -	\$ _____	
Under Collected	- - - -	\$ _____	
Delinquent	- - - -	\$ 536.30	\$ 536.30
Total	- - - -	\$ 8,883.08	

Assessment of

COLLECTIONS OF TAXES OF 1953

Lowell

OF *Little Lake*

CASS COUNTY, MINNESOTA

FUNDS	MARCH SETTLEMENT 1953	JUNE SETTLEMENT 1953	NOV. SETTLEMENT 1953	Amount Collected from Nov. 1952 to First Monday in Jan. 1953	REDUCTIONS	Total Reductions and Collected	BALANCE UNCOLLECTED	ADDITIONS	Total Uncollected to First Monday in January, 1953
State--Non-Homestead, State--Homestead,	3672 4508	6074 10207	2921 5378	34 81					
County Revenue, County Road and Bridge, County Welfare, County Bond and Interest, <i>R. & B. Sinking</i>	24162 13575 43133 9127 1708	54709 30738 97665 20666 3866	28827 16196 51460 10881 2037	436 245 778 165 31					
Town Revenue, Town Road and Bridge, Town Drag, Town State Loan, <i>Tree Telephone</i>	7257 20747 854 4269 4269	16432 46977 1933 9666 9666	8658 24752 1019 5093 5093	131 374 15 77 77					
School Local 1 Mill, School Special, School State Loan, Deficiency Tuition Transportation <i>C. O. & J. #5</i>	854 35792 1708 13916 4073	1933 59624 3866 31511 9221	1019 36259 2037 16603 4858	15 387 31 257 73					
	193624	414754	223099	3201					

	SCHOOL DISTRICT NO.	LOCAL 1 MILL	SPECIAL	STATE LOAN	<i>Transport. B & W.</i>	<i>C. O.</i>	<i>O & J #5</i>	TOTALS
MARCH SETTLEMENT	<i>Q#5</i> <i>Na#5</i>	276 578	6896 28896		552 1156	4496 9420	1316 2757	13586 42807
	Totals	854	35792		1708	13916	4073	56343
JUNE SETTLEMENT	<i>Q#5</i> <i>Na#5</i>	1481 452	37036 22588		2963 903	24148 7363	7066 2155	72694 33461
	Totals	1933	59624		3866	31511	9221	106155
NOVEMBER SETTLEMENT	<i>Q#5</i> <i>Na#5</i>	587 432	14672 21587		1174 863	9566 7037	2799 2057	28788 31778
	Totals	1019	36259		2037	16603	4858	60776
NOVEMBER to JANUARY	<i>Q#5</i>	15	387		31	251	73	757
	Totals	15	387		31	251	73	757
ADDITIONS	School District No.							
	Totals							
REDUCTIONS	School District No.							
	Totals							

11-30

11-30 Fish's Point

King's Green Shores

Assessment Roll and Tax List of Real Property in the Town of Turtle Lake, Cass County, Minnesota, for Taxes for the Year 1953.

Form 50D (53) MINN. STAT. CAPTION, UNIFORM

Table with columns: IN WHOSE NAME ASSESSED, TO WHOM TRANSFERRED, DESCRIPTION OF PROPERTY, TRUE AND FULL VALUATIONS, ASSESSED VALUATIONS, FINAL EQUALIZED VALUE. Includes handwritten entries for Albert Wiggins, Leonard Peterson, and various land subdivisions.

Table with columns: VALUATIONS BY SCHOOL DISTRICTS AS EQUALIZED BY DEPARTMENT OF TAXATION, TAXES, PAID, WHEN PAID, Number of Receipt, March Settlement, June Settlement, November Settlement, Collections to First Monday, Delinquent on First Monday, Total Delinquent Tax and Penalty, REMARKS. Includes handwritten tax amounts and dates like '2nd Half Paid OCT 27 1954'.

11-30

11-30

Presh's Point

King's Green Stores

Assessment Roll and Tax List of Real Property in the Town of Turtle Lake

Cass County, Minnesota, for Taxes for the Year 1953.

Table with columns for property description, valuations, taxes, and payments. Includes handwritten entries for names like E.H. Simmons, Hazel M. Olson, and Torfin V. Houde.

Assessment Roll and Tax List of Real Property in the Town of Turtle Lake

Form SCD (83) MLLS-STATE UNIVERSITY, MINNESOTA

Table with columns: IN WHOSE NAME ASSESSED, TO WHOM TRANSFERRED, DESCRIPTION OF PROPERTY, TRUE AND FULL VALUATIONS, ASSESSED VALUATIONS, FINAL EQUALIZED VALUE. Includes handwritten entries for Edda Dahly, Gustave Kulander, Theodore C. Norgard, Orville H. Warner, Carl Ostrom, Gerrit Bakker, Mels R. & Tina Dahly, Oscar H. Hanson.

Cass County, Minnesota, for Taxes for the Year 1953.

Table with columns: VALUATIONS BY SCHOOL DISTRICTS AS EQUALIZED BY DEPARTMENT OF TAXATION, SOLD FOR TAXES, SPECIAL TAXES, TOTAL TAXES, PAID, WHEN PAID, Number of Receipt, March Settlement 1954, June Settlement 1954, November Settlement 1954, Collections to First Monday in January 1955, Delinquent on First Monday in January 1955, Total Delinquent Tax and Penalty, REMARKS. Includes handwritten tax amounts and payment dates.

11-2-30 Pugh's Point King's Green Shores

Assessment Roll and Tax List of Real Property in the Town of Quistle Lake

Cass County, Minnesota, for Taxes for the Year 1953.

Form SDT-253 (53) MINN. STATE GOVERNMENT, MINNEAPOLIS

Table with columns: IN WHOSE NAME ASSESSED, TO WHOM TRANSFERRED, DESCRIPTION OF PROPERTY, TRUE AND FULL VALUATIONS, ASSESSED VALUATIONS, VALUATIONS BY SCHOOL DISTRICTS AS EQUALIZED BY DEPARTMENT OF TAXATION, SOLD FOR TAXES, TAXES, SPECIAL TAXES, TOTAL TAXES, PAID, WHEN PAID, Number of Receipt, March Settlement 1954, June Settlement 1954, Penalty, November Settlement 1954, Penalty, Collections to First Monday in January 1955, Penalty, Delinquent on First Monday in January 1955, Total Delinquent Tax and Penalty, REMARKS. Rows include property owners like Nels Bergly, Adolph M. Predeson, Frank D. & Dorothea Illk., Hope Lutheran Church, and Ash Stare.

399

461
138
599

123 10 64

123 74

4861 7513

112-30

Rush's Point

King's Ocean Stores

Dunlop

Assessment Roll and Tax List of Real Property in the *Town* of *Turtle Lake*

Cass County, Minnesota, for Taxes for the Year 1953.

Form 500 (53) WILCO-DAVIS COMPANY, MINNEAPOLIS

IN WHOSE NAME ASSESSED	TO WHOM TRANSFERRED	DESCRIPTION OF PROPERTY				TRUE AND FULL VALUATIONS										FINAL EQUALIZED VALUE	SOLD FOR TAXES	VALUATIONS BY SCHOOL DISTRICTS AS EQUALIZED BY DEPARTMENT OF TAXATION						TAX including State Homestead	State Tax on Non-Homestead	SPECIAL TAXES	TOTAL TAXES	PAID	WHEN PAID	Number of Receipt	March Settlement 1954	June Settlement 1954	Penalty	November Settlement 1954	Penalty	Collections to First Monday in January 1955	Penalty	Delinquent on First Monday in January 1955	Total Delinquent Tax and Penalty	REMARKS							
		SUBDIVISION	Sec. or Lot	Town or Block	No. of Acres of Land	LAND Exclusive of Structures and Improvements	BUILDINGS and Other Structures	MACHINERY Permanently Attached to Real Estate	TOTAL True and Full Value	RURAL		ALL OTHER		MACHINERY Permanently Attached to Real Estate	TOTAL ASSESSED VALUE			Total Assessed Value as Equalized by the Board of Review	District No.	District No.	District No.	District No.	District No.																		District No.						
										Homestead Up to \$4,000	Over \$4,000 and Non-Homestead	Homestead Up to \$4,000	Over \$4,000 and Non-Homestead																													Rate..... Mills	Rate..... Mills	Rate..... Mills	Rate..... Mills	Rate..... Mills	Rate..... Mills
										20%	33 1/3%	25%	40%																													Dollars	Dollars	Dollars	Dollars	Dollars	Dollars
U. S. of America				1	NE 1/4 of NE 1/4	19 14130	5																																								
U. S. of America				2	NW 1/4 of NE 1/4																																										
U. S. of America				3	SW 1/4 of NE 1/4																																										
U. S. of America				4	SE 1/4 of NE 1/4																																										
<i>Mary Ann Norton</i>				6	NE 1/4 of NW 1/4			40	No																																						
"	"			7	NW 1/4 of NW 1/4 Lot 1	41925	"																																								
U. S. of America				8	SW 1/4 of NW 1/4 Lot 2																																										
U. S. of America				9	SE 1/4 of NW 1/4																																										
U. S. of America				11	NE 1/4 of SW 1/4																																										
U. S. of America				12	NW 1/4 of SW 1/4 Lot 3																																										
U. S. of America				13	SW 1/4 of SW 1/4 Lot 4																																										
U. S. of America				14	SE 1/4 of SW 1/4																																										
U. S. of America				16	NE 1/4 of SE 1/4																																										
<i>Tom Garrity</i>				17	NW 1/4 of SE 1/4	40	Yes																																								
"	"			18	SW 1/4 of SE 1/4	40	"																																								
U. S. of America				19	SE 1/4 of SE 1/4																																										
				20				16192																																							

112-30
King's Green Stores
Parker's Point

Assessment Roll and Tax List of Real Property in the *Town* of *Lurtle Lake*,

Cass County, Minnesota, for Taxes for the Year 1953.

Form SCD
MINNESOTA (53) MILLER-DAVIS COMPANY, MINNEAPOLIS

IN WHOSE NAME ASSESSED	TO WHOM TRANSFERRED	DESCRIPTION OF PROPERTY				No. School District	Indicate Homesteaded Yes or No	Indicate Agricultural Yes or No	TRUE AND FULL VALUATIONS			ASSESSED VALUATIONS					FINAL EQUALIZED VALUE	SOLD FOR TAXES	VALUATIONS BY SCHOOL DISTRICTS AS EQUALIZED BY DEPARTMENT OF TAXATION						SPECIAL TAXES	TOTAL TAXES	PAID	WHEN PAID	Number of Receipt	March Settlement 1954	June Settlement 1954	November Settlement 1954	Penalty	Collections to First Monday in January 1955	Penalty	Delinquent on First Monday in January 1955	Total Delinquent Tax and Penalty	REMARKS								
		SUBDIVISION	Sec. or Lot	Town or Block	Rng.				Number of Acres of Land	Machinery Permanently Attached to Real Estate	TOTAL True and Full Value	RURAL		ALL OTHER		Machinery Permanently Attached to Real Estate			TOTAL ASSESSED VALUE	Total Assessed Value as Equalized by the Board of Review	District No.	District No.	District No.	District No.															District No.	District No.	Tax including State Homestead	State Tax on Non-Homestead				
												Acres	100ths	Up to \$4,000 20%	Over \$4,000 and Non-Homestead 33 1/3%																												Up to \$4,000 25%	Over \$4,000 and Non-Homestead 40%	33 1/3%	Dollars
State of Minnesota		NE 1/4 of NE 1/4				22 14/30																																								
State of Minnesota		NW 1/4 of NE 1/4				Lot 3																																								
State of Minnesota		SW 1/4 of NE 1/4																																												
U. S. of America		SE 1/4 of NE 1/4				Lot 4																																								
U. S. of America						Lot 1																																								
State of Minnesota		NE 1/4 of NW 1/4																																												
U. S. of America		NW 1/4 of NW 1/4																																												
U. S. of America		SW 1/4 of NW 1/4																																												
State of Minnesota		SE 1/4 of NW 1/4																																												
U. S. of America		NE 1/4 of SW 1/4																																												
U. S. of America		NW 1/4 of SW 1/4																																												
U. S. of America		SW 1/4 of SW 1/4																																												
U. S. of America		SE 1/4 of SW 1/4																																												
U. S. of America		NE 1/4 of SE 1/4				Lot 4																																								
U. S. of America		NW 1/4 of SE 1/4																																												
U. S. of America		SW 1/4 of SE 1/4				Lot 6																																								
U. S. of America		SE 1/4 of SE 1/4																																												

112-30

Rush's Point
King's Green Stores

Assessment Roll and Tax List of Real Property in the *Down* of *Turtle Lake*

Cass County, Minnesota, for Taxes for the Year 1953.

Form 5(C) (53)

Table with 24 columns: IN WHOSE NAME ASSESSED, TO WHOM TRANSFERRED, SUBDIVISION, Section or Lot, Town or Block, No. of Acres, No. of School District, Indicate Homestead or No., Indicate Agricultural or No., TRUE AND FULL VALUATIONS (LAND, BUILDINGS, MACHINERY, TOTAL), ASSESSED VALUATIONS (RURAL, ALL OTHER, MACHINERY, TOTAL), VALUATIONS BY SCHOOL DISTRICTS AS EQUALIZED BY DEPARTMENT OF TAXATION (District No., Rate, etc.), SPECIAL TAXES, TOTAL TAXES, PAID, WHEN PAID, Number of Receipt, March Settlement, June Settlement, November Settlement, Collections to First Monday, Delinquent on First Monday, Total Delinquent Tax and Penalty, REMARKS.

112-30

Dish's Point King's Green Stores

Assessment Roll and Tax List of Real Property in the Town of Turtle Lake

Cass County, Minnesota, for Taxes for the Year 1953.

Form 504 (53) MINN. STAT. ANNOT., MINNAPOLIS

Table with columns: IN WHOSE NAME ASSESSED, TO WHOM TRANSFERRED, DESCRIPTION OF PROPERTY, TRUE AND FULL VALUATIONS, ASSESSED VALUATIONS, VALUATIONS BY SCHOOL DISTRICTS AS EQUALIZED BY DEPARTMENT OF TAXATION, SOLD FOR TAXES, PAID, WHEN PAID, Number of Receipt, March Settlement, June Settlement, November Settlement, Collections to First Monday in January, Delinquent on First Monday in January, Total Delinquent Tax and Penalty, REMARKS.

112-30

Fish's Point

King's Green Shores

Assessment Roll and Tax List of Real Property in the Town of Turtle Lake

Cass County, Minnesota, for Taxes for the Year 1953.

Form 5CD

REVISION (53)

IN WHOSE NAME ASSESSED	TO WHOM TRANSFERRED	DESCRIPTION OF PROPERTY				No. School District	Indicate Homestead Yes or No	Indicate Agricultural Yes or No	TRUE AND FULL VALUATIONS							FINAL EQUALIZED VALUE		
		SUBDIVISION	Sec. or Lot	Town or Block	Rng.				Number of Acres of Land	MACHINERY Permanently Attached to Real Estate	RURAL		ALL OTHER		MACHINERY Permanently Attached to Real Estate		TOTAL ASSESSED VALUE	Total Assessed Value as Equalized by the Board of Review
											Dollars	Dollars	Dollars	Dollars				
U. S. of America		NE 1/4 of NE 1/4				5												
U. S. of America		NW 1/4 of NE 1/4																
U. S. of America		SW 1/4 of NE 1/4																
U. S. of America		SE 1/4 of NE 1/4																
U. S. of America		NE 1/4 of NW 1/4																
U. S. of America		NW 1/4 of NW 1/4																
U. S. of America		SW 1/4 of NW 1/4																
U. S. of America		SE 1/4 of NW 1/4																
U. S. of America		NE 1/4 of SW 1/4																
U. S. of America		NW 1/4 of SW 1/4																
U. S. of America		SW 1/4 of SW 1/4																
U. S. of America		SE 1/4 of SW 1/4																
U. S. of America		NE 1/4 of SE 1/4																
U. S. of America		NW 1/4 of SE 1/4																
U. S. of America		SW 1/4 of SE 1/4																
U. S. of America		SE 1/4 of SE 1/4																

SOLD FOR TAXES	VALUATIONS BY SCHOOL DISTRICTS AS EQUALIZED BY DEPARTMENT OF TAXATION						Tax including State Homestead	State Tax on Non-Homestead	SPECIAL TAXES	TOTAL TAXES	PAID	WHEN PAID	Number of Receipt	March Settlement 1954	June Settlement 1954	Penalty 1954	November Settlement 1954	Penalty 1954	Collections to First Monday in January 1955	Penalty 1955	Delinquent on First Monday in January 1955	Total Delinquent Tax and Penalty	REMARKS
	District No.	District No.	District No.	District No.	District No.	District No.																	
	Rate	Rate	Rate	Rate	Rate	Rate																	

112-30 Bush's Point King's Green Shores

Assessment Roll and Tax List of Real Property in the Town of Suttle Lake

Form 5CD
MAY 1953 (53)

Table with columns: IN WHOSE NAME ASSESSED, TO WHOM TRANSFERRED, DESCRIPTION OF PROPERTY, TRUE AND FULL VALUATIONS, ASSESSED VALUATIONS, FINAL EQUALIZED VALUE. Includes entries for Geo. Thomas, Albert Thomas, Chas. & Laura McKinney, George Thomas, Fred H. Phillips, U.S. of America, Albert Thomas, State of Minnesota, and Chas. & Laura McKinney.

Cass County, Minnesota, for Taxes for the Year 1953.

Table with columns: SOLD FOR TAXES, VALUATIONS BY SCHOOL DISTRICTS AS EQUALIZED BY DEPARTMENT OF TAXATION, SPECIAL TAXES, TOTAL TAXES, PAID, WHEN PAID, Number of Receipt, March Settlement 1954, June Settlement 1954, November Settlement 1954, Collections to First Monday in January 1955, Delinquent on First Monday in January 1955, Total Delinquent Tax and Penalty, REMARKS. Includes entries for lots 1 through 20 with payment dates like JUL 2 1954 and MAY 31 1954.

112-20

Push's Point

King's Green Shores

Assessment Roll and Tax List of Real Property in the Town of Dunbar of Dunbar Lake

Cass County, Minnesota, for Taxes for the Year 1953.

Form 5CD

MINN. STAT. (53) CHAP. 359, § 01, SUBDIVISION 1

Main assessment table with columns for Description of Property, True and Full Valuations, Assessed Valuations, and Final Equalized Value.

Taxation table with columns for Sold for Taxes, Valuations by School Districts, Special Taxes, Total Taxes, and various tax payment dates and amounts.

11-2-50 Rush's Point King's Green Shores

Assessment Roll and Tax List of Real Property in the Down of Turtle Lake

Form 5CD (33) MINN-SALE REPORT, MINNAPOLIS

Cass County, Minnesota, for Taxes for the Year 1953.

IN WHOSE NAME ASSESSED	TO WHOM TRANSFERRED	DESCRIPTION OF PROPERTY				TRUE AND FULL VALUATIONS						ASSESSED VALUATIONS					FINAL EQUALIZED VALUE	SOLD FOR TAXES	VALUATIONS BY SCHOOL DISTRICTS AS EQUALIZED BY DEPARTMENT OF TAXATION						TAX INCLUDING STATE HOMESTEAD	STATE TAX ON NON-HOMESTEAD	SPECIAL TAXES	TOTAL TAXES	PAID	WHEN PAID	Number of Receipt	March Settlement 1954	June Settlement 1954	Penalty	November Settlement 1954	Penalty	Collections to First Monday in January 1955	Penalty	Delinquent on First Monday in January 1955	Total Delinquent Tax and Penalty	REMARKS										
		SUBDIVISION	Sec. or Lot	Town or Block	Rng.	Number of Acres of Land	Machinery Permanently Attached to Real Estate	TOTAL True and Full Value	RURAL		ALL OTHER		Machinery Permanently Attached to Real Estate	TOTAL ASSESSED VALUE	Total Assessed Value as Equalized by the Board of Review	District No.			District Rate	District No.	District Rate	District No.	District Rate	District No.																		District Rate									
									Acres	100ths	Up to \$4,000 20%	Over \$4,000 and Non-Homestead 33 1/3%																															Up to \$4,000 25%	Over \$4,000 and Non-Homestead 40%	33 1/3%	Dollars	Dollars	Dollars	Dollars	Dollars	Dollars
Edith H. Jensen					1	NE 1/4 of NE 1/4 1/2 acre of lot 2	31	141	30			17	5	No.									1																												
Lynia Morehouse & Mabel G. Hall					2	SW 1/4 of NE 1/4 2 1/2 acre strip 10' wide in road						5	"										2																												
Edmond J. Friendly Rosalie S. Hamps					3	SW 1/4 of NE 1/4 1/2 acre of lot 2						16	"										3																												
Walter St. & Freida Middelstach					4	SE 1/4 of NE 1/4 1/2 acre of lot 2						1	"										4																												
D. H. Hecker					6	N 1/2 of NW 1/4 1.4 acre of lot 2						1	40	"									6																												
					7	NW 1/4 of NW 1/4																	7																												
					8	SW 1/4 of NW 1/4																	8																												
George Thomas					9	SE 1/4 of NW 1/4 3/4 acre of SE 1/4 NW 1/4						8	"										9																												
Mr. F. & Florence E. Hall					10	1 3/4 acre of SE 1/4 of NW 1/4						1	75	"									10																												
					11	NE 1/4 of SW 1/4																	11																												
					12	NW 1/4 of SW 1/4																	12																												
					13	SW 1/4 of SW 1/4																	13																												
					14	SE 1/4 of SW 1/4																	14																												
Ben A. & Edna Mae Smith					15	all that portion of lot 4 lying N. of Ry						2	No.										15																												
					16	NE 1/4 of SE 1/4																	16																												
					17	NW 1/4 of SE 1/4																	17																												
					18	SW 1/4 of SE 1/4																	18																												
					19	SE 1/4 of SE 1/4																	19																												
					20																		20																												

1948

137
137
274

5630 62

5692

4695 793

104

112-30 King's Point King's Green Shores

Assessment Roll and Tax List of Real Property in the Town of Durfee Lake

Cass County, Minnesota, for Taxes for the Year 1953.

Form 5CD (53)

IN WHOSE NAME ASSESSED	TO WHOM TRANSFERRED	DESCRIPTION OF PROPERTY				TRUE AND FULL VALUATIONS				ASSESSED VALUATIONS						FINAL EQUALIZED VALUE	SOLD FOR TAXES	VALUATIONS BY SCHOOL DISTRICTS AS EQUALIZED BY DEPARTMENT OF TAXATION						PAID	WHEN PAID	Number of Receipt	March Settlement 1954	June Settlement 1954	Penalty	November Settlement 1954	Penalty	Collections to First Monday in January 1955	Penalty	Delinquent on First Monday in January 1955	Total Delinquent Tax and Penalty	REMARKS													
		SUBDIVISION	Sec. of Lot	Town or Block	Rng.	Number of Acres of Land	LAND Exclusive of Structures and Improvements	BUILDINGS and Other Structures	MACHINERY Permanently Attached to Real Estate	TOTAL True and Full Value	RURAL		ALL OTHER		MACHINERY Permanently Attached to Real Estate			TOTAL ASSESSED VALUE	District No.	District No.	District No.	District No.	District No.														District No.												
											Acres	100ths	Homestead Up to \$4,000 20%	Over \$4,000 and Non-Homestead 33 1/3%																								Homestead Up to \$4,000 25%	Over \$4,000 and Non-Homestead 40%	Rate	Rate	Rate	Rate	Rate	Rate	Mills	Mills	Mills	Mills
		Dollars	Dollars	Dollars	Dollars	Dollars	Dollars	Dollars	Dollars	Dollars	Dollars	Dollars	Dollars	Dollars	Dollars			Dollars	Dollars	Dollars	Dollars	Dollars	Dollars														Dollars	Dollars	Dollars	Dollars	Dollars	Dollars	Dollars	Dollars	Dollars	Dollars	Dollars	Dollars	Dollars
State of Minnesota		1				NE 1/4 of NE 1/4																																											

36 141 30

5

King's Green Shores

Assessment Roll and Tax List of Real Property in the Town of Turtle Lake

Cass County, Minnesota, for Taxes for the Year 1953.

112-30

Form 5CD

MINN. STAT. (53) 541.00-541.03, 541.05, 541.06

Main table with columns: IN WHOSE NAME ASSESSED, TO WHOM TRANSFERRED, DESCRIPTION OF PROPERTY, TRUE AND FULL VALUATIONS, ASSESSED VALUATIONS, VALUATIONS BY SCHOOL DISTRICTS AS EQUALIZED BY DEPARTMENT OF TAXATION, PAID, WHEN PAID, Number of Receipt, March Settlement 1954, June Settlement 1954, Penalty, November Settlement 1954, Penalty, Collections to First Monday in January 1955, Delinquent on First Monday in January 1955, Total Delinquent Tax and Penalty, REMARKS. Includes handwritten entries for various lots and owners like Bunnay P. & Dorothy C. Paramore, etc.

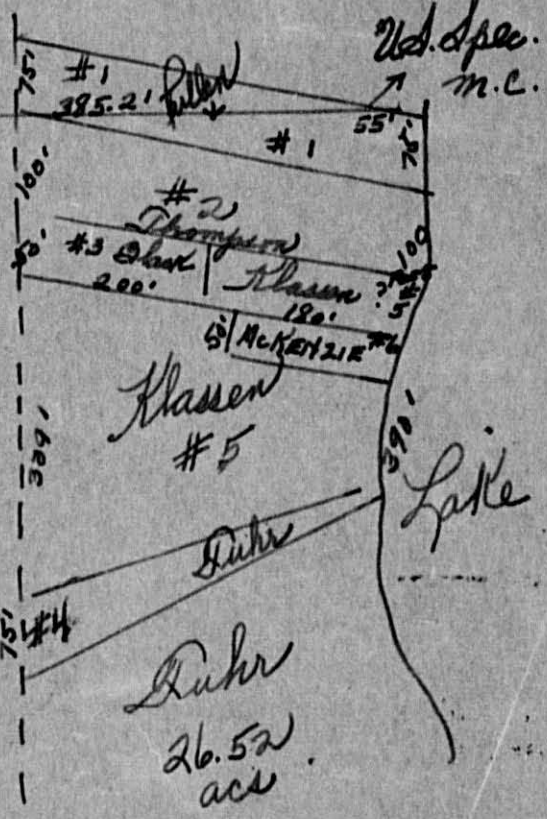
Lot # 2
 Dec 15 - 142 - 30

Lot 1

Line between Lot 1 & 2

2 1/2 of Lot 2
 Achenbauer
 70 acres

North line of the 1/2 of Lot 2
 Thompson



- #1 ~~Pullen~~ 3.75 ac
- #2 Thompson .80 ac.
- #3 Black .25 ac.
- #4 Duhr 375 ac.
- #5 Klassen 2. ac.
- #6 McKenzie .21 ac.

Map revised
 1953

Assessment Roll and Tax List of Real Property in the Town of Turtle Lake

Form SCD
MINN. STAT. (53) MILLER-DAVIS COMPANY, MINNEAPOLIS

Table with columns: IN WHOSE NAME ASSESSED, TO WHOM TRANSFERRED, DESCRIPTION OF PROPERTY, TRUE AND FULL VALUATIONS, ASSESSED VALUATIONS, FINAL EQUALIZED VALUE. Includes handwritten entries for U.S. of America, Gustave Kulander, Shingobee Mill, Paul B. & Lillian Hill-Hansen, Arthur Dallavies, Christine M. Green.

11665

Cass County, Minnesota, for Taxes for the Year 1953.

Table with columns: SOLD FOR TAXES, VALUATIONS BY SCHOOL DISTRICTS AS EQUALIZED BY DEPARTMENT OF TAXATION, Tax including State Homestead, State Tax on Non-Homestead, SPECIAL TAXES, TOTAL TAXES, PAID, WHEN PAID, Number of Receipt, March Settlement 1954, June Settlement 1954, November Settlement 1954, Collections to First Monday in January 1955, Delinquent on First Monday in January 1955, Total Delinquent Tax and Penalty, REMARKS. Includes handwritten entries for various tax payments and settlements.

112-30

Fish's Point
King's Green Stores

IN WHOSE NAME ASSESSED		TO WHOM TRANSFERRED			DESCRIPTION OF PROPERTY			TRUE AND FULL VALUATIONS													FINAL EQUALIZED VALUE		
No.	Acres	Subdivision	Sec. or Lot	Town or Block	Rng.	Number of Acres of Land	No. School District	Indicate Homestead Yes or No	Indicate Agricultural Use Yes or No	LAND EXCLUSIVE OF STRUCTURES AND IMPROVEMENTS				BUILDINGS AND OTHER STRUCTURES			MACHINERY PERMANENTLY ATTACHED TO REAL ESTATE		TOTAL TRUE AND FULL VALUE				Total Assessed Value as Equalized by the Board of Review
										RURAL	ALL OTHER	MACHINERY	TOTAL ASSESSED VALUE	Homestead	Over \$4,000 and Non-Homestead	Over \$4,000 and Non-Homestead	MACHINERY Permanently Attached to Real Estate	Dollars	Dollars	Dollars	Dollars	Dollars	
1	20	2 1/2 of NE 1/4 of NE 1/4 of Sec 19	19	14	30	20	5	No	No													70	
2	20	2 1/2 of NW 1/4 of NE 1/4 of Sec 14	14	14	30	20	"	"	"														
3	10.20	SW 1/4 of NE 1/4 of Sec 14	14	4	30	10.20	"	"	"														
4	70 acres approx (lake)	SE 1/4 of NE 1/4 of Sec 14	14	3	30	70 acres approx (lake)																	
5	20	NE 1/4 of Sec 14	14	3	30	20	No	No															
6	40	N 1/2 of Sec 14	14	7	30	40	yes	yes															
7	3.25	SW 1/4 of NW 1/4 of Sec 14	14	8	30	3.25	No	No															
8	3.25	SE 1/4 of SW 1/4 of Sec 14	14	8	30	3.25	"	"															
9	11	10' lot west of road less N 1/2				11	yes	yes															
10	17.40	lot 7 less 1/2 acre				17.40	yes	yes															
11	20.15	NW 1/4 of SW 1/4 of Sec 14	14	6	30	20.15	yes	yes															
12	20	SW 1/4 of SW 1/4 of Sec 14	14	6	30	20	No	No															
13	40	SE 1/4 of SW 1/4 of Sec 14	14	6	30	40	No	No															
14	8	1/2 of road less 150'				8	No	No															
15	2.45	1/2 of SE 1/4 of road				2.45	yes	yes															
16		NW 1/4 of SE 1/4																					
17		SW 1/4 of SE 1/4																					
18		SE 1/4 of SE 1/4																					
19																							
20	235.70					235.70																	

SOLD FOR TAXES	VALUATIONS BY SCHOOL DISTRICTS AS EQUALIZED BY DEPARTMENT OF TAXATION						Tax including State Homestead	State Tax on Non-Homestead	SPECIAL TAXES	TOTAL TAXES	PAID	WHEN PAID	Number of Receipt	March Settlement 1954	June Settlement 1954	Penalty	November Settlement 1954	Penalty	Collections to First Monday in January 1955	Penalty	Delinquent on First Monday in January 1955	Total Delinquent Tax and Penalty	REMARKS
	District No.	District No.	District No.	District No.	District No.	District No.																	
							7.60	1.80		7.78		2nd Half Paid	OCT 27 1954	14333									
							7.60	1.80		7.78		1st Half Paid	MAY 31 1954	9876	389								
							31.46	7.20		32.18		2nd Half Paid	MAY 31 1954	12635	389					389			
												1st Half Paid	MAY 31 1954		16.09					16.09			
							7.60	1.80		7.78		PAID IN FULL	MAY 31 1954	7463	778								
							8.42			8.42		7 PAID IN FULL	MAY 31 1954	13640	842								
							24.26	5.40		24.80		8 PAID IN FULL	MAY 31 1954	12639	2480								
							31.04	7.00		31.74		9 PAID IN FULL	MAY 31 1954	12638	3174								
							26.814	4.32		27.246		10 PAID IN FULL	MAY 31 1954	14444	13623					13623			
							148.02	16.20		149.64		11 PAID IN FULL	MAY 31 1954	13846	75.00								
							126.80	15.20		128.32		12 PAID IN FULL	MAY 24 1954	13827	64.16								
							7.60	1.80		7.78		13 PAID IN FULL	JAN 25 1954	585	778								
							49.96	1.14		51.10		14 PAID IN FULL	JAN 25 1954		5.110								
							39.26	.90		40.16		15 PAID IN FULL	MAY 31 1954	14637	20.08								
							26.72			26.72		16 PAID IN FULL	SEP 30 1954	13416	1336								

1112-30

Fish's Point

King's Green Shores

Assessment Roll and Tax List of Real Property in the town of Durtle Lake,

Cass County, Minnesota, for Taxes for the Year 1953.

Form SCD
UNIVERSITY OF MINNESOTA LIBRARY SYSTEM, DULUTH

IN WHOSE NAME ASSESSED	TO WHOM TRANSFERRED	DESCRIPTION OF PROPERTY				TRUE AND FULL VALUATIONS							ASSESSED VALUATIONS				FINAL EQUALIZED VALUE								
		SUBDIVISION	Sec. of Lot	Town or Block	Rng.	Number of Acres of Land	No. School District	Indicate Homestead or No	Indicate Agricultural Use or No	LAND Exclusive of Structures and Improvements	BUILDINGS and Other Structures	MACHINERY Permanently Attached to Real Estate	TOTAL True and Full Value	RURAL		ALL OTHER		MACHINERY Permanently Attached to Real Estate	TOTAL ASSESSED VALUE	Total Assessed Value as Equalized by the Board of Review					
														Acres	100ths	Homestead Up to \$4,000					Over \$4,000 and Non-Homestead	Homestead Up to \$4,000	Over \$4,000 and Non-Homestead		
														20%	33 1/8%	25%					40%	33 1/8%	Dollars	Dollars	Dollars
1		NE 1/4 of NE 1/4																							
U. S. of America																									
U. S. of America																									
U. S. of America																									
U. S. of America																									

SOLD FOR TAXES	VALUATIONS BY SCHOOL DISTRICTS AS EQUALIZED BY DEPARTMENT OF TAXATION						Tax including State Homestead	State Tax on Non-Homestead	SPECIAL TAXES	TOTAL TAXES	PAID	WHEN PAID	Number of Receipt	March Settlement 1954	June Settlement 1954	Penalty 1954	November Settlement 1954	Penalty 1954	Collections to First Monday in January 1955	Penalty	Delinquent on First Monday in January 1955	Total Delinquent Tax and Penalty	REMARKS	
	District No.	District No.	District No.	District No.	District No.	District No.																		
	Rate	Rate	Rate	Rate	Rate	Rate																		
	Mills	Mills	Mills	Mills	Mills	Mills																		
1																								

112-30

Fish's Point
King's Green Shores

Assessment Roll and Tax List of Real Property in the Town of Turtle Lake

Form 500

Cass County, Minnesota, for Taxes for the Year 1953.

IN WHOSE NAME ASSESSED	TO WHOM TRANSFERRED	DESCRIPTION OF PROPERTY			No. School District	Indicate Homestead Yes or No	Indicate Agricultural Yes or No	TRUE AND FULL VALUATIONS					ASSESSED VALUATIONS					FINAL EQUALIZED VALUE	
		SUBDIVISION	Sec. of Lot	Town or Block				Reg.	Number of Acres of Land	Machinery Permanently Attached to Real Estate	BUILDINGS and Other Structures	LAND Exclusive of Structures and Improvements	RURAL		ALL OTHER		Machinery Permanently Attached to Real Estate		TOTAL ASSESSED VALUE
Acres	100ths				Homestead	Over \$4,000 and Non-Homestead	Homestead						Over \$4,000 and Non-Homestead	Dollars	Dollars	Dollars		Dollars	
		NE 1/4 of NE 1/4			28 14230														
State of Minnesota		NW 1/4 of NE 1/4																	
State of Minnesota		SW 1/4 of NE 1/4																	
U. S. of America		SE 1/4 of NE 1/4																	
U. S. of America		1/2 of SW 1/4 of T10R14																	
		NE 1/4 of NW 1/4																	
State of Minnesota		NW 1/4 of NW 1/4																	
	Marsella Beck	SE 1/4 of NW 1/4			20 - 70														
		NE 1/4 of SW 1/4																	
		NW 1/4 of SW 1/4																	
U. S. of America		SW 1/4 of SW 1/4																	
U. S. of America		SE 1/4 of SW 1/4																	
State of Minnesota		1/2 of NW 1/4 of SW 1/4																	
U. S. of America		NE 1/4 of SE 1/4																	
U. S. of America		1/2 of NW 1/4 of SE 1/4																	
U. S. of America		SW 1/4 of SE 1/4																	
U. S. of America		SE 1/4 of SE 1/4																	
						20													

SOLD FOR TAXES	VALUATIONS BY SCHOOL DISTRICTS AS EQUALIZED BY DEPARTMENT OF TAXATION						Tax including State Homestead	State Tax on Non-Homestead	SPECIAL TAXES	TOTAL TAXES	PAID	WHEN PAID	Number of Receipt	March Settlement 1954	June Settlement 1954	November Settlement 1954	Penalty	Collections to First Monday in January 1955	Penalty	Delinquent on First Monday in January 1955	Total Delinquent Tax and Penalty	REMARKS								
	District No.	District No.	District No.	District No.	District No.	District No.																	Rate	Rate	Rate	Rate	Rate	Rate	Rate	Rate
	Dollars	Dollars	Dollars	Dollars	Dollars	Dollars																	\$ cts.	\$ cts.	\$ cts.	\$ cts.	\$ cts.	\$ cts.	\$ cts.	\$ cts.
1																														
2																														
3																														
4																														
5																														
6																														
7																														
8																														
9																														
9	103																													
8																														
8																														
9																														
9																														
9																														
9																														
9																														
9																														
9																														
9																														
9																														
9																														
9																														
9																														
9																														
9																														
9																														
9																														
9																														
9																														
9																														
9																														
9																														
9																														
9																														
9																														
9																														
9																														
9																														
9																														
9																														
9																														
9																														
9																														
9																														
9																														
9																														
9																														
9																														
9																														
9																														
9																														

112-30

King's Green Stores

1

2

3

4

5

6

7

8

9

10

11

12

13

14

15

16

17

18

19

20

Marsella Beck

20 - 70

1/2 of NW 1/4 of SW 1/4

1/2 of NW 1/4 of SE 1/4

OCT 5 1954
MAY 31 1954

Balance Paid 13645
12643

21 18 48

21 66

11 00 10 66

Assessment Roll and Tax List of Real Property in the Town of Turtle Lake

Cass County, Minnesota, for Taxes for the Year 1953.

Form SCD
MINNED 53) BUREAU OF REVENUE, MINNEAPOLIS

IN WHOSE NAME ASSESSED	TO WHOM TRANSFERRED	DESCRIPTION OF PROPERTY				No. School District	Indicate Homestead Yes or No	Indicate Agricultural Yes or No	TRUE AND FULL VALUATIONS			ASSESSED VALUATIONS					FINAL EQUALIZED VALUE	SOLD FOR TAXES	VALUATIONS BY SCHOOL DISTRICTS AS EQUALIZED BY DEPARTMENT OF TAXATION						Special Taxes	TOTAL TAXES	PAID	WHEN PAID	Number of Receipt	March Settlement 1954	June Settlement 1954	Penalty	November Settlement 1954	Penalty	Collections to First Monday in January 1955	Penalty	Delinquent on First Monday in January 1955	Total Delinquent Tax and Penalty	REMARKS												
		SUBDIVISION	Sec. of Lot	Town or Block	Rdg.				Number of Acres of Land	TOTAL True and Full Value	Machinery Permanently Attached to Real Estate	RURAL		ALL OTHER					Machinery Permanently Attached to Real Estate	TOTAL ASSESSED VALUE	District	District	District	District																District	Rate	Rate	Rate	Rate							
												Homestead Up to \$4,000	Over \$4,000 and Non-Homestead	Homestead Up to \$4,000	Over \$4,000 and Non-Homestead	Machinery Permanently Attached to Real Estate																													Total Assessed Value as Equalized by the Board of Review	No.	No.	No.	No.	No.	No.
												20%	33 1/8%	25%	40%	33 1/8%																													Dollars	Dollars	Dollars	Dollars	Dollars	Dollars	Dollars
Clarence C. Byersdorfer				29 142 30	40	5	Yes																																												
Amelia + John H. Alola					40		"																																												
Ingvald G. Hovelson					40		"																																												
Clarence Byersdorfer					40		"																																												
Emilie C. Larson					20		No																																												
H. V. + Agnes P. Brooks					20		No																																												
Ralph + Georgia Foreman					40		Yes																																												
Clara Clarence Byersdorfer					40		Yes																																												
Agnes + Henry H. Brooks					40		Yes																																												
Ralph + Georgia Foreman					40		"																																												
U. S. of America					40		"																																												
U. S. of America					40		"																																												
Theodore O. Sopper					40		"																																												
"					40		"																																												
"					40		"																																												
"					40		"																																												
Leo. Daniel Jordan					20		"																																												

Broken H. 190
43.08 - Burke
44.08 - Shellenbarger
210
formerly Indian land, new assessment, 1953
30
formerly Indian land, trans 2/53 (new assessment)

King's Point
King's Green Shores

112-30

Assessment Roll and Tax List of Real Property in the Town of Down of Luttle Lake

Form SCD
STATE OF MINNESOTA (53) HILLS-GRAVE COUNTY, MINNEAPOLIS

Cass County, Minnesota, for Taxes for the Year 1953.

112-30

IN WHOSE NAME ASSESSED	TO WHOM TRANSFERRED	DESCRIPTION OF PROPERTY				TRUE AND FULL VALUATIONS										FINAL EQUALIZED VALUE	SOLD FOR TAXES	VALUATIONS BY SCHOOL DISTRICTS AS EQUALIZED BY DEPARTMENT OF TAXATION						SPECIAL TAXES	TOTAL TAXES	PAID	WHEN PAID			Number of Receipt	March Settlement 1954	June Settlement 1954	Penalty	November Settlement 1954	Penalty	Collections to First Monday in January 1955	Penalty	Delinquent on First Monday in January 1955	Total Delinquent Tax and Penalty	REMARKS													
		SUBDIVISION	Sec. or Lot	Town or Block	Ring.	Number of Acres of Land	LAND Exclusive of Structures and Improvements	BUILDINGS and Other Structures	MACHINERY Permanently Attached to Real Estate	TOTAL True and Full Value	RURAL		ALL OTHER		MACHINERY Permanently Attached to Real Estate			TOTAL ASSESSED VALUE	Total Assessed Value as Equalized by the Board of Review	District No.	District No.	District No.	District No.				District No.	Tax including State Homestead	State Tax on Non-Homestead												Month	Day	Year										
U. S. of America		1																																																			
		2																																																			
		3																																																			
U. S. of America		4																																																			
		5																																																			
State of Minnesota		6																																																			
State of Minnesota		7																																																			
State of Minnesota		8																																																			
State of Minnesota		9																																																			
		10																																																			
U. S. of America		11																																																			
U. S. of America		12																																																			
U. S. of America		13																																																			
U. S. of America		14																																																			
		15																																																			
State of Minnesota		16																																																			
		17																																																			
Glenn Bennett		18																																																			
Janet Hopon		19																																																			
John H. Hopon, Jr		20																																																			

Glenn Bennett
 Janet Hopon
 John H. Hopon, Jr

77
 * 48
 * 48
 77
 125

1582 36
 986
 2568 36

1618 19
 986 20
 2604

PAID IN FULL MAR 15 1954 3643 1618 ✓
 PAID IN FULL MAY 31 1954 7675 986 ✓
 2604

Fish's Point
 King's Green Stores

Assessment Roll and Tax List of Real Property in the Town of Turtle Lake

Form 5CD

MINNESOTA (53) DRAIN-STATE COMPANY, MINNEAPOLIS

DESCRIPTION OF PROPERTY

TRUE AND FULL VALUATIONS

ASSESSED VALUATIONS

FINAL EQUALIZED VALUE

Table with columns: IN WHOSE NAME ASSESSED, TO WHOM TRANSFERRED, SUBDIVISION, Acres 100ths, No. School District, Indicate Homestead Yes or No, Indicate Agricultural Yes or No, LAND, BUILDINGS and Other Structures, MACHINERY Permanently Attached to Real Estate, TOTAL True and Full Value, RURAL (Homestead, Over \$4,000 and Non-Homestead), ALL OTHER (Homestead, Over \$4,000 and Non-Homestead), MACHINERY Permanently Attached to Real Estate, TOTAL ASSESSED VALUE, Total Assessed Value as Equalized by the Board of Review, FINAL EQUALIZED VALUE.

Cass County, Minnesota, for Taxes for the Year 1953.

Table with columns: SOLD FOR TAXES, VALUATIONS BY SCHOOL DISTRICTS AS EQUALIZED BY DEPARTMENT OF TAXATION (District No., District No., District No., District No., District No., District No.), Tax including State Homestead, State Tax on Non-Homestead, SPECIAL TAXES, TOTAL TAXES, PAID, WHEN PAID (Month Day Year), Number of Receipt, March Settlement 1954, June Settlement 1954, Penalty, November Settlement 1954, Penalty, Collections to First Monday in January 1955, Penalty, Delinquent on First Monday in January 1955, Total Delinquent Tax and Penalty, REMARKS.

Assessment Roll and Tax List of Real Property in the *Town* of *Turtle Lake*

Form 5CD
MINN. STAT. (53) MALLER-DAVIS COMPANY, MINNEAPOLIS

Cass County, Minnesota, for Taxes for the Year 1953.

IN WHOSE NAME ASSESSED	TO WHOM TRANSFERRED	DESCRIPTION OF PROPERTY					No. School District	Indicate Homestead Yes or No	Indicate Agricultural Yes or No	TRUE AND FULL VALUATIONS					ASSESSED VALUATIONS					FINAL EQUALIZED VALUE	VALUATIONS BY SCHOOL DISTRICTS AS EQUALIZED BY DEPARTMENT OF TAXATION						SPECIAL TAXES	TOTAL TAXES	PAID	WHEN PAID	Number of Receipt	March Settlement 1954	June Settlement 1954	Penalty 1954	November Settlement 1954	Penalty 1954	Collections to First Monday in January 1955	Penalty 1955	Delinquent on First Monday in January 1955	Total Delinquent Tax and Penalty	REMARKS								
		SUBDIVISION	Sec. or Lot	Town or Block	Rng.	Number of Acres of Land Acres 100ths				LAND Exclusive of Structures and Improvements Dollars	BUILDINGS and Other Structures Dollars	MACHINERY Permanently Attached to Real Estate Dollars	TOTAL True and Full Value Dollars	RURAL		ALL OTHER			MACHINERY Permanently Attached to Real Estate Dollars		TOTAL ASSESSED VALUE Dollars	Total Assessed Value as Equalized by the Board of Review Dollars	District No.	District No.	District No.	District No.																District No.	District No.	Tax including State Homestead Dollars	State Tax on Non-Homestead Dollars				
														Homestead Up to \$4,000 20%	Over \$4,000 and Non-Homestead 33 1/3%	Homestead Up to \$4,000 25%	Over \$4,000 and Non-Homestead 40%	Rate																												Rate	Rate	Rate	Rate
<i>Bruce Siberts</i>					<i>34 14 30</i>																																												
					<i>40</i>																																												
<i>State of Minnesota</i>					<i>Lot 10</i>																																												
<i>U. S. of America</i>					<i>NE 1/4 of NW 1/4</i>																																												
<i>U. S. of America</i>					<i>NW 1/4 of NW 1/4</i>																																												
<i>Peder A. Becken</i>					<i>SW 1/4 of NW 1/4</i>		<i>40</i>																																										
" "					<i>SE 1/4 of NW 1/4</i>		<i>40</i>																																										
<i>State of Minnesota</i>					<i>Lot 11</i>																																												
<i>Peder A. Becken</i>					<i>NW 1/4 of SW 1/4</i>		<i>40</i>																																										
" "					<i>3 1/2 of SW 1/4 of SW 1/4</i>		<i>20</i>																																										
					<i>SE 1/4 of SW 1/4</i>																																												
<i>Bruce Siberts</i>					<i>Lot 1</i>		<i>9.55</i>																																										
<i>E. L. Nelson</i>					<i>Lot 9</i>		<i>20.65</i>																																										
					<i>NW 1/4 of SE 1/4</i>																																												
					<i>NW 1/4 of SE 1/4</i>																																												
					<i>SW 1/4 of SE 1/4</i>																																												
					<i>SE 1/4 of SE 1/4</i>																																												
<i>Bruce Siberts</i>					<i>Lot 5</i>		<i>12.04</i>																																										
							<i>222.24</i>																																										

112-30

Fish's Point
King's Green Shores

Assessment Roll and Tax List of Real Property in the Town of Turtle Lake

Cass County, Minnesota, for Taxes for the Year 1953.

Form SCD (53) MILLER-BAYNE COMPANY, MINNEAPOLIS

IN WHOSE NAME ASSESSED	TO WHOM TRANSFERRED	DESCRIPTION OF PROPERTY				No. School District	Indicate Homestead Yes or No	Indicate Agricultural Yes or No	TRUE AND FULL VALUATIONS				ASSESSED VALUATIONS					FINAL EQUALIZED VALUE			
		SUBDIVISION	Sec. of Lot	Town or Block	Rng.				Number of Acres of Land	Machinery Permanently Attached to Real Estate	LAND Exclusive of Structures and Improvements	BUILDINGS and Other Structures	TOTAL True and Full Value	RURAL		ALL OTHER			MACHINERY Permanently Attached to Real Estate	TOTAL ASSESSED VALUE	Total Assessed Value as Equalized by the Board of Review
														Acres	100ths	Homestead Up to \$4,000 20%	Over \$4,000 and Non-Homestead 33 1/3%				
Herbison Bridge Co.		NE 1/4 of NE 1/4	36	142	30	5															
John M. Ramey		Lot 2 + 1/2 of NE 1/4 of SE 1/4							2875		No.										
L. Tulander		1/2 of SE 1/4 of NW 1/4 of SE 1/4							20												
Joseph L. Mueller		2 1/2 of Lot 10, NW 1/4 of NW 1/4 of NE 1/4 of SE 1/4							13 08		Yes										
E. L. Oliver		8 1/2 of Lot 10, SW 1/4 of NW 1/4 of NE 1/4 of SE 1/4							14 08		No										
U. S. of America		1/2 NW 1/4 of SW 1/4							20												
U. S. of America		1/2 SW 1/4 of SW 1/4																			
L. Tulander		1/2 of SE 1/4 of SW 1/4							20		No.										
Mr. J. & Eunice O. Engelhardt		1/2 of NW 1/4 of SE 1/4							47 30		"										
Carl E. C. Baugh		1/2 of NW 1/4 of SE 1/4							20		"										
Clifford Collins		1/2 of SE 1/4 of NW 1/4 of SE 1/4							10		Yes										
Frances Bushman & Eli L. Oliver		6.150 of NW 1/4 of Lot 10, NW 1/4 of NW 1/4 of SE 1/4							173 21												

SOLD FOR TAXES	VALUATIONS BY SCHOOL DISTRICTS AS EQUALIZED BY DEPARTMENT OF TAXATION						Tax including State Homestead	State Tax on Non-Homestead	SPECIAL TAXES	TOTAL TAXES	PAID	WHEN PAID	Number of Receipt	March Settlement 1954	June Settlement 1954	November Settlement 1954	Collections to First Monday in January 1955	Delinquent on First Monday in January 1955	Total Delinquent Tax and Penalty	REMARKS
	District No.	District Rate	District No.	District Rate	District No.	District Rate														
	Dollars	Mills	Dollars	Mills	Dollars	Mills														
1																				
2																				
3																				
4																				
5									165	33 92	76	34 68								
6									37	7 60	18	778								
7																				
8																				
9																				
10									834	171 44	3 88	175 32								
11																				
12																				
13																				
14																				
15																				
16																				
17																				
18																				
19																				
20																				

142-30

Fishi's Point King's Green Shores

Assessment Roll and Tax List of Real Property in the Town of Turtle Lake

Form SCD (53)

IN WHOSE NAME ASSESSED	TO WHOM TRANSFERRED	DESCRIPTION OF PROPERTY	TRUE AND FULL VALUATIONS							ASSESSED										
			Subdivision	Sec. or Lot	Town or Block	Rag.	Number of Acres of Land	LAND Exclusive of Structures and Improvements	BUILDINGS and Other Structures	MACHINERY Permanently Attached to Real Estate	TOTAL True and Full Value	RURAL		ALL OTHER						
												Acres	100ths	Homestead Up to \$4,000 20%	Over \$4,000 and Non-Homestead 33 1/3%	Homestead Up to \$4,000 25%	Over \$4,000 and Non-Homestead 40%			
		1 NE 1/4 of NE 1/4																		
		2 NW 1/4 of NE 1/4																		
		3 SW 1/4 of NE 1/4																		
		4 SE 1/4 of NE 1/4																		
		5																		
		6 NE 1/4 of NW 1/4																		
		7 NW 1/4 of NW 1/4																		
		8 SW 1/4 of NW 1/4																		
		9 SE 1/4 of NW 1/4																		
		10																		
		11 NE 1/4 of SW 1/4																		
		12 NW 1/4 of SW 1/4																		
		13 SW 1/4 of SW 1/4																		
		14 SE 1/4 of SW 1/4																		
		15																		
		16 NE 1/4 of SE 1/4																		
		17 NW 1/4 of SE 1/4																		
		18 SW 1/4 of SE 1/4																		
		19 SE 1/4 of SE 1/4																		
		20																		

PAGES

54

THRU

60

BLANK

Cass County, Minnesota, for Taxes for the Year 1953.

Assessee's Name	State Tax on Non-Homestead	SPECIAL TAXES	TOTAL TAXES	PAID	WHEN PAID	Number of Receipt	March Settlement 1954	June Settlement 1954	Penalty	November Settlement 1954	Penalty	Collections to First Monday in January 1955	Penalty	Delinquent on First Monday in January 1955	Total Delinquent Tax and Penalty	REMARKS
cts.	\$ cts.	\$ cts.	\$ cts.		Month Day Year		\$ cts.	\$ cts.	\$ cts.	\$ cts.	\$ cts.	\$ cts.	\$ cts.	\$ cts.	\$ cts.	

112-30

Brush's Point King's Green Shores

Form 50 (53) JULY-OCTOBER COMPANY, MINNEAPOLIS

IN WHOSE NAME ASSESSED	TO WHOM TRANSFERRED	SUBDIVISION	DESCRIPTION OF PROPERTY				TRUE AND FULL VALUATIONS										FINAL EQUALIZED VALUE	VALUATIONS BY SCHOOL DISTRICTS AS EQUALIZED BY DEPARTMENT OF TAXATION							SPECIAL TAXES	TOTAL TAXES	PAID	WHEN PAID	Number of Receipt	March Settlement 1954	June Settlement 1954	Penalty	November Settlement 1954	Penalty	Collections to First Monday in January 1955	Penalty	Delinquent on First Monday in January 1955	Total Delinquent Tax and Penalty	REMARKS		
			Sec. or Lot	Town or Block	Rng.	Number of Acres of Land	Machinery Permanently Attached to Real Estate	LAND Exclusive of Structures and Improvements	BUILDINGS and Other Structures	TOTAL True and Full Value	RURAL		ALL OTHER		Machinery Permanently Attached to Real Estate	TOTAL ASSESSED VALUE		Total Assessed Value as Equalized by the Board of Review	District No.	District Rate	District No.	District Rate	District No.	District Rate																District No.	District Rate
											Acres	100ths	Up to \$4,000 20%	Over \$4,000 and Non-Homestead 33 1/3%																											
			Indicate Homestead Yes or No	Indicate Agricultural Yes or No	No. School District	No. School District	No. School District	No. School District	No. School District	No. School District	No. School District	No. School District	No. School District	No. School District	No. School District	No. School District		No. School District	No. School District	No. School District	No. School District	No. School District	No. School District	No. School District																No. School District	No. School District
<u>D.E. Johnson</u>	<u>Platted from 282 ac of Lot 2 - Sec 31-14-30</u>	<u>Bushy Point</u>	1	1		5 70										6	138	02			140		1 PAID IN FULL MAY 31 1954				140														
" "			2	2												6	138	02			140		2 PAID IN FULL MAY 31 1954	12652			140														
<u>Kenneth A. & Agnes E. Dickerson</u>			3	3												6	138	02			140		3 PAID IN FULL MAY 31 1954				140														
" "			4	4												7	162	04			166		4 PAID IN FULL MAY 15 1954																		
" "			5	5												44	1014	20			1034		5 PAID IN FULL MAY 15 1954	5375			1340														
<u>Clara & Daniel H. Hecker</u>			6	6												6	138	02			140		6 PAID IN FULL MAY 15 1954																		
" "			7	7												8	184	04			188		7 PAID IN FULL MAR 18 1954	4876			188														
<u>August Hecker</u>			8	8												71	1636	34			1670		8 PAID IN FULL MAR 18 1954	4876			1670														
<u>D. H. & Alvina Hecker</u>			9	9												22	508	10			518		9 PAID IN FULL FEB 27 1954	4021	518																
<u>Harold L. & Emma J. Sowers</u>			10	10												8	184	04			188		10 PAID IN FULL MAR 18 1954	4876			188														
" "			11	11												8	184	04			188		11 PAID IN FULL MAY 31 1954	12656			188														
<u>Edw. G. & Ann M. Carlson</u>			12	12												61	1406	28			1434		12 PAID IN FULL MAY 31 1954				1434														
" "			13	13												69	1590	32			1622		13 PAID IN FULL MAY 31 1954				1622														
<u>Arthur A. & Lola A. Falk</u>	<u>(Plymouth 1/2 miles from mt.)</u>		14	14												8	184	04			188		14 PAID IN FULL MAY 31 1954	12657			188														
" "			15	15												114	2628	54			2682		15 1st Half Paid MAY 12 1954																		
" "			16	16												9	208	04			212		16 2nd Half Paid OCT 18 1954	3904																	
" "			17	17												9	208	04			212		17 1st Half Paid MAY 12 1954	5251			1553		1553												
<u>Dr. W. P. & Florence E. Hall</u>			18	18												30	692	14			706		18 PAID IN FULL MAY 28 1954	7403			706														
" "			19	19												30	692	14			706		19 PAID IN FULL MAY 28 1954				706														
			20	20																			20																		

142-30
Bushy Point

King's Green Shores

Assessment Roll and Tax List of Real Property in the Town of Little Lake

Cass County, Minnesota, for Taxes for the Year 1953.

Table with columns for property details (IN WHOSE NAME ASSESSED, TO WHOM TRANSFERRED, DESCRIPTION OF PROPERTY, TRUE AND FULL VALUATIONS, ASSESSED VALUATIONS), school district valuations, taxes (SOLD FOR TAXES, VALUATIONS BY SCHOOL DISTRICTS), and payments (PAID, WHEN PAID). Includes handwritten entries for 'Albert Thomas' and 'King's Green Acres'.

Assessment Roll and Tax List of Real Property in the Town of Turtle Lake

Form 5C (53) MILLER-GAYNE COMPANY, MINNEAPOLIS

112-30
Bush's Point
KING'S GREEN SHORES

IN WHOSE NAME ASSESSED	TO WHOM TRANSFERRED	DESCRIPTION OF PROPERTY				No. School District	Indicate Homestead Yes or No	Indicate Agricultural Yes or No	TRUE AND FULL VALUATIONS						FINAL EQUALIZED VALUE Dollars	
		SUBDIVISION	Sec. of Lot	Town or Block	Rug.				Number of Acres of Land Acres 10ths	ASSESSED VALUATIONS						
										LAND Exclusive of Structures and Improvements Dollars	BUILDINGS and Other Structures Dollars	MACHINERY Permanently Attached to Real Estate Dollars	TOTAL True and Full Value Dollars	RURAL Homestead Up to \$4,000 20% Over \$4,000 and Non-Homestead 33 1/3 %		ALL OTHER Homestead Up to \$4,000 25% Over \$4,000 and Non-Homestead 40%
Albert Thomas		King's Green Shores	21													
"	"	"	22													
"	"	"	23													
"	"	"	24													
"	"	Outlet a														
"	"	" b														
"	"	" c														

Cass County, Minnesota, for Taxes for the Year 1953.

SOLD FOR TAXES	VALUATIONS BY SCHOOL DISTRICTS AS EQUALIZED BY DEPARTMENT OF TAXATION						Tax Including State Homestead	State Tax on Non-Homestead	SPECIAL TAXES	TOTAL TAXES	PAID	WHEN PAID	Number of Receipt	March Settlement 1954	June Settlement 1954	Penalty 1954	November Settlement 1954	Penalty 1954	Collections to First Monday in January 1955	Penalty	Delinquent on First Monday in January 1955	Total Delinquent Tax and Penalty	REMARKS
	District No.	District No.	District No.	District No.	District No.	District No.																	
	Rate	Rate	Rate	Rate	Rate	Rate																	
1	1						20				20	1	1st Half Paid	MAY 28 1954									
2	1						20				20	2	2nd Half Paid	DEC 31 1954									
3	1						20				20	3	1st Half Paid	MAY 28 1954									
4	1						20				20	4	2nd Half Paid	DEC 31 1954									
5	1						20				20	5	1st Half Paid	MAY 28 1954									
6	1						20				20	6	2nd Half Paid	DEC 31 1954									
7	1						20				20	7	1st Half Paid	MAY 28 1954									

7 7

140

140

70

70

Assessment Roll and Tax List of Real Property in the Town of Turtle Lake,

Cass County, Minnesota, for Taxes for the Year 1953.

IN WHOSE NAME ASSESSED	TO WHOM TRANSFERRED	DESCRIPTION OF PROPERTY						TRUE AND FULL VALUATIONS					ASSESSED VALUATIONS					FINAL EQUALIZED VALUE Dollars
		SUBDIVISION	Sec. or Lot	Town or Block	Rng.	Number of Acres of Land	No. School District	Indicate Homestead Yes or No	Indicate Agricultural Yes or No	RURAL		ALL OTHER		MACHINERY Permanently Attached to Real Estate 33 1/3 %	TOTAL ASSESSED VALUE Dollars	Total Assessed Value as Equalized by the Board of Review Dollars		
										LAND Exclusive of Structures and Improvements Dollars	BUILDINGS and Other Structures Dollars	MACHINERY Permanently Attached to Real Estate Dollars	TOTAL True and Full Value Dollars				Homestead Up to \$4,000 20% Dollars	

SOLD FOR TAXES	VALUATIONS BY SCHOOL DISTRICTS AS EQUALIZED BY DEPARTMENT OF TAXATION						Tax including State Homestead Mills	State Tax on Non-Homestead Mills	SPECIAL TAXES	TOTAL TAXES	PAID	WHEN PAID	Number of Receipt	March Settlement 1954	June Settlement 1954	Penalty 1954	November Settlement 1954	Penalty 1954	Collections to First Monday in January 1955	Penalty 1955	Delinquent on First Monday in January 1955	Total Delinquent Tax and Penalty	REMARKS
	District No.	District No.	District No.	District No.	District No.	District No.																	
	Rate Mills	Rate Mills	Rate Mills	Rate Mills	Rate Mills	Rate Mills																	

142-30
BUSH'S POINT
KING'S GREEN SHORES
POOPY POINT

6 Grand H 9061 3002 = 12069
7 Latale H 14413 4477 = 18750
8 23334 7485 = 30819
11 25 4796.18
12 745 1725.90
13 652188 8950 660938

Lotel line 2429 68