

Assessment & Tax List - 1959

Turtle Lake

NAME OF OWNER

TABULAR SCHEDULE OF VALUATIONS,

LEVIED IN THE Town OF Turtle Lake

RATES AND TAXES

COUNTY OF CASS, STATE OF MINNESOTA

School District No.	VALUATION BY SCHOOL DISTRICTS				RATE OF STATE TAXES		RATE OF COUNTY TAXES					RATE OF TOWN TAXES					RATE OF		TAXES LEVIED																		
	Agri-cultural Lands	Non-Agri-cultural Lands	Personal Property	Total Value of all Property except Money and Credits	Total Rate of State Tax	Item.	R. & B.	Welfare	Bonds and Int.	Other	Total Rate of County Tax	Rev.	H. & B.	Drag Tax	State Loan	Other	Total Rate of Town Tax	Local	Special	State Loan	Deficiency	Tuition	Transportation	Other	Local 1 Mill	Special	State Loan	Def.	E.O. PERA Bldg.	Total School Taxes	FUNDS	Rate	Amounts				
119	20,681	30,144 ^a	2515	72,583	H. 8.10	35.68	15	61.95		5.79	129.04	4.82	13.8		5	5	28.62	25	46.25		17.91	3.25	10.12		102.53	268.29	57990	107282	41544	7539	23474	237829	State - Non-Homestead,	32918			
		19,243																50	46.25		17.91	3.25	10.12		127.53	293.29	246935	228415	88452	16051	49980	629833	State - Homestead,	54098			
					N.H. 6.22																												County Revenue,	258970			
					14.32																													County Road and Bridge,	108873		
																																		County Welfare,	449646		
																																		Bonds and Interest	14517		
																																			Co. Name	14517	
																																			R & B Bldg.	34985	
																																			Town Revenue,	100164	
																																			Town Road and Bridge,	36291	
																																			Town Drag,	36291	
																																			Town State Loan,	36291	
																																				Phone	207731
																																				School Local 1 Mill,	304925
																																				School Special,	335697
																																				School State Loan,	
																																				Deficiency	129996
																																				Tuition	23590
																																				Transportation	73454
																																				E.O. PERA	867662
																																				B & Int.	

Assessed Value	Rural	All Other	Personal Property	Total
Homestead	13,894			13,894
Non-Homestead	36,937		21,758	58,689
Total	50,831		21,758	72,583

Other 5795
15,963

County: P & B Fed Prop. 36291
P & B 42025
Agriculture 3629
Transportation 8129
936597

Total Taxes Real Estate 14,619.26
Pers Prop. 6,370.80
Total 20,990.06

Total Number of Acres 8926.38
State of Minnesota, }
COUNTY OF CASS }
Auditor of said County and State of said, do hereby certify that the foregoing is a true and correct Schedule, showing the valuation of all the taxable property, in the County of Turtle Lake, in said County, the several rates of Taxation and Totals of the several Tax Funds levied thereon for the year A. D. 1959.

Witness my hand and official seal, this 11th day of January, A. D. 1960

SEAL

L. C. Peterson County Auditor
By Helen Billow Signy

COLLECTIONS OF TAXES OF 1957

Town OF Turtle Lake

CASS COUNTY, MINNESOTA

FUNDS	MARCH SETTLEMENT 1957	JUNE SETTLEMENT 1957	NOV. SETTLEMENT 1957	Amount Collected from Nov. 1957 to First Monday in Jan. 1958	REDUCTIONS	Total Reductions and Collected	BALANCE UNCOLLECTED	ADDITIONS	Total Uncollected to First Monday in January, 1958
State-Non-Homestead,	7219	13883	8287	07					
State-Homestead,	10224	26452	14523	57					
County Revenue,	59792	118541	67703	254					
County Road and Bridge,	25187	49835	28462	106					
County Welfare,	103816	205819	117551	440					
County Bond and Interest, Transp.	1876	3721	2125	08					
R. + B. F. O.	8378	16612	9488	35					
P.E.R.A.	9703	19236	10987	41					
Co. Nurse	3352	6645	3795	14					
Town Revenue,	2077	16014	9146	35					
Town Road and Bridge,	23126	45848	26186	98					
Town Drag, Fire	8379	16612	9488	35					
Town State Trans. Phone	8379	16612	9488	35					
R. + B. Bldg.	3352	6645	3795	14					
Agrie. Assn.	837	1661	948	03					
School Local 1 Mill,									
School Special,	77793	134091	81760	204					
School State Loan,									
Deficiency	77506	153658	87760	329					
Tuition									
Transportation									
C.P.	30014	59503	33986	127					
B. + Int.	16959	33623	19202	72					
P.E.R.A.	5447	10797	6167	23					
	489360	955808	551047	1937					

	SCHOOL DISTRICT NO.	LOCAL 1 MILL	SPECIAL	STATE LOAN	Deb.	C.O.	B. + Int.	P. E. R. A.	TOTALS
MARCH SETTLEMENT	119-a		5998	51	11096	4297	2428	780	24599
	119-7a		71795		66410	25717	14531	1667	193120
Totals			77793		77506	30014	16959	5447	207719
JUNE SETTLEMENT	119-a		32026		59249	22944	12965	4163	131347
	119-7a		102065		94409	36559	20658	6634	260325
Totals			134091		153658	59503	33623	10797	391672
NOVEMBER SETTLEMENT	119 a		12916		23894	9254	5228	1679	52971
	119 7a		69044		63866	24732	13974	4488	176104
Totals			81960		87760	33986	19202	6167	227075
NOVEMBER to JANUARY	119 a		151		280	108	61	20	620
	119 7a		53		49	19	11	03	135
Totals			204		329	127	72	23	755
ADDITIONS									
Totals									
REDUCTIONS									
Totals									

Real Estate

112-30

Bush's Point King's Green Shores Rocky Point Hine Water Beach

Assessment Roll and Tax List of Real Property in the Town of Little Lake

Cass County, Minnesota, for Taxes for the Year 1959.

Indicate Type of Property: R-Residential, C-Commercial, I-Industrial, U-Utility, F-Farm, L-Lakeshore, T-Timber, M-Mineral

Table with columns: IN WHOSE NAME ASSESSED, TO WHOM TRANSFERRED, DESCRIPTION OF PROPERTY, TRUER AND FULL VALUATIONS, ASSESSED VALUATIONS, VALUATIONS BY SCHOOL DISTRICTS AS EQUALIZED BY DEPARTMENT OF TAXATION, TAXES, PAID, WHEN PAID, etc.

112-30, Bush's Point, King's Green Shores, Rocky Point, Pine Water Beach

Assessment Roll and Tax List of Real Property in the Town of Turtle Lake

Cass County, Minnesota, for Taxes for the Year 1959.

Indicate Type of Property: R-Residential, C-Commercial, I-Industrial, U-Utility, F-Farm, L-Lakeshore, T-Timber, M-Mineral

Table with columns: IN WHOSE NAME ASSESSED, TO WHOM TRANSFERRED, DESCRIPTION OF PROPERTY, TRUE AND FULL VALUATIONS, ASSESSED VALUATIONS, VALUATIONS BY SCHOOL DISTRICTS AS EQUALIZED BY DEPARTMENT OF TAXATION, TAXES, PAID, WHEN PAID, etc.

250.23

319
559
878

23556 348

23924

11973 11931

112-30
Frank's Point
King's Green Shores
Rocky Point
Blue Water B

Assessment Roll and Tax List of Real Property in the Town of Little Lake

Indicate Type of Property: R-Residential, C-Commercial, I-Industrial, U-Utility, F-Farm, L-Lakeshore, T-Timber, M-Mineral

Cass County, Minnesota, for Taxes for the Year 1959.

Table with columns: IN WHOSE NAME ASSESSED, TO WHOM TRANSFERRED, DESCRIPTION OF PROPERTY, TRUE AND FULL VALUATIONS, ASSESSED VALUATIONS, VALUATIONS BY SCHOOL DISTRICTS AS EQUALIZED BY DEPARTMENT OF TAXATION, TAXES, PAID, WHEN PAID, SPECIAL TAXES, TOTAL TAXES, REMARKS.

Continued Next Page

112-30 Bush's Point King's Green Shores Rocky Point Blue Water Beach

Assessment Roll and Tax List of Real Property in the Town of Turtle Lake, Minnesota

Cass County, Minnesota, for Taxes for the Year 1959.

Table with columns: IN WHOSE NAME ASSESSED, TO WHOM TRANSFERRED, DESCRIPTION OF PROPERTY, TRUE AND FULL VALUATIONS, ASSESSED VALUATIONS, and FINAL EQUALIZED VALUE.

Table with columns: SOLD FOR TAXES, VALUATIONS BY SCHOOL DISTRICTS AS EQUALIZED BY DEPARTMENT OF TAXATION, Tax including State Homestead, State Tax on Non-Homestead, SPECIAL TAXES, TOTAL TAXES, PAID, WHEN PAID, Number of Receipts, March Settlement 1960, June Settlement 1960, Penalty, November Settlement 1960, Penalty, Collections to First Monday in January 1961, Penalty, Delinquent on First Monday in January 1961, Total Delinquent Tax and Penalty, and REMARKS.

11-2-30 Bush's Point King's Green Shores Rocky Point Blue Water Beach

Assessment Roll and Tax List of Real Property in the Town of Turtle Lake

Cass County, Minnesota, for Taxes for the Year 1959.

Indicate Type of Property: R-Residential, C-Commercial, I-Industrial, U-Utility, F-Farm, L-Lakeshore, T-Timber, M-Mineral

Main table with columns: IN WHOSE NAME ASSESSED, TO WHOM TRANSFERRED, DESCRIPTION OF PROPERTY, TRUE AND FULL VALUATIONS, ASSESSED VALUATIONS, VALUATIONS BY SCHOOL DISTRICTS AS EQUALIZED BY DEPARTMENT OF TAXATION, SPECIAL TAXES, TOTAL TAXES, PAID, WHEN PAID, Number of Receipt, March Settlement 1960, June Settlement 1960, November Settlement 1960, Penalty, Collections to First Monday in January 1961, Delinquent on First Monday in January 1961, Total Delinquent Tax and Penalty, REMARKS.

U. S. of America
U. S. of America
U. S. of America
Robert E. Jr. + Olive M. George
Lawrence M. + Viola F. Blackburn
Robert + Eula Blackburn
Oscar Christopherson
George Lucak
Dallas + Mayo Skare
George Lucak
George Lucak
George Lucak

PAID IN FULL MAY 1 3 1960 6880
PAID IN FULL MAR 2 2 1960 4400
PAID IN FULL APR 1 1 1960 604
PAID IN FULL APR 1 1 1960 604
PAID IN FULL MAY 3 1 1960 13520
PAID IN FULL MAY 3 1 1960 13520

112-30
Bush's Point
King's Green Shores
Rocky Point
Blue Water Beach

Assessment Roll and Tax List of Real Property in the Town of South Lake, Minnesota

Cass County, Minnesota, for Taxes for the Year 1959

Form SCD 1-1-59 (Revised 1-1-59) *Indicate Type of Property: R-Residential, C-Commercial, I-Industrial, U-Utility, F-Farm, L-Lakeshore, T-Timber, M-Mineral

Table with columns: IN WHOSE NAME ASSESSED, TO WHOM TRANSFERRED, DESCRIPTION OF PROPERTY, TRUE AND FULL VALUATIONS, ASSESSED VALUATIONS, VALUATIONS BY SCHOOL DISTRICTS AS EQUALIZED BY DEPARTMENT OF TAXATION, and REMARKS.

Table with columns: SOLD FOR TAXES, VALUATIONS BY SCHOOL DISTRICTS AS EQUALIZED BY DEPARTMENT OF TAXATION, SPECIAL TAXES, TOTAL TAXES, PAID, WHEN PAID, Number of Receipt, March Settlement 1960, June Settlement 1960, November Settlement 1960, Collections to First Monday in January 1961, Delinquent on First Monday in January 1961, Total Delinquent Tax and Penalty, and REMARKS.

112-30
Push's Point
King's Green Shores
Rocky Point
Blue Water Beach

Assessment Roll and Tax List of Real Property in the Town of Turtle Lake

Cass County, Minnesota, for Taxes for the Year 1959.

* Indicate Type of Property: R-Residential, C-Commercial, I-Industrial, U-Utility, F-Farm, L-Lakeshore, T-Timber, M-Mineral

Table with columns: IN WHOSE NAME ASSESSED, TO WHOM TRANSFERRED, DESCRIPTION OF PROPERTY, TRUE AND FULL VALUATIONS, ASSESSED VALUATIONS, VALUATIONS BY SCHOOL DISTRICTS AS EQUALIZED BY DEPARTMENT OF TAXATION, TAX INCLUDING STATE HOMESTEAD, SPECIAL TAXES, TOTAL TAXES, PAID, WHEN PAID, Number of Receipt, March Settlement 1960, June Settlement 1960, Penalty, November Settlement 1960, Penalty, Collections to First Monday in January 1961, Penalty, Delinquent on First Monday in January 1961, Total Delinquent Tax and Penalty, REMARKS.

380

11648

691

18588

26

18564

30 00

62 51

67 07

2576

30% under collected

11-2-30, Bush's Point, King's Green Shores, Rocky Point, Blue Water Beach

Assessment Roll and Tax List of Real Property in the Town of South Lake

Cass County, Minnesota, for Taxes for the Year 1959.

Form SCD MILLER-DAVIS CO., MINNEAPOLIS

Indicate Type of Property: R-Residential, C-Commercial, I-Industrial, U-Utility, F-Farm, L-Lakeshore, T-Timber, M-Mineral

Table with columns: IN WHOSE NAME ASSESSED, TO WHOM TRANSFERRED, DESCRIPTION OF PROPERTY, TRUE AND FULL VALUATIONS, ASSESSED VALUATIONS, VALUATIONS BY SCHOOL DISTRICTS AS EQUALIZED BY DEPARTMENT OF TAXATION, TAXES, PAID, WHEN PAID, Number of Receipt, March Settlement 1960, June Settlement 1960, November Settlement 1960, Penalty, Collections to First Monday in January 1961, Delinquent on First Monday in January 1961, Total Delinquent Tax and Penalty, REMARKS.

11-2-30 Bush's Point King's Green Shores Rocky Point Blue Water Beach

Assessment Roll and Tax List of Real Property in the Town of Turtle Lake

Cass County, Minnesota, for Taxes for the Year 1959.

Form 502 MILLER-DAVIS CO., MINNEAPOLIS Indicate Type of Property: R-Residential, C-Commercial, I-Industrial, U-Utility, F-Farm, L-Lakeshore, T-Timber, M-Mineral

Table with columns: IN WHOSE NAME ASSESSED, TO WHOM TRANSFERRED, DESCRIPTION OF PROPERTY, TRUE AND FULL VALUATIONS, ASSESSED VALUATIONS, VALUATIONS BY SCHOOL DISTRICTS AS EQUALIZED BY DEPARTMENT OF TAXATION, TAXES, PAID, WHEN PAID, etc.

11-2-30 Bush's Point King's Green Shores Rocky Point Blue Water Beach

Assessment Roll and Tax List of Real Property in the Town of Turtle Lake

Cass County, Minnesota, for Taxes for the Year 1959.

Table with columns: IN WHOSE NAME ASSESSED, TO WHOM TRANSFERRED, DESCRIPTION OF PROPERTY, TRUE AND FULL VALUATIONS, ASSESSED VALUATIONS, VALUATIONS BY SCHOOL DISTRICTS AS EQUALIZED BY DEPARTMENT OF TAXATION, TAXES, PAID, WHEN PAID, Number of Receipt, March Settlement 1960, June Settlement 1960, November Settlement 1960, Collections to First Monday in January 1961, Delinquent on First Monday in January 1961, Total Delinquent Tax and Penalty, REMARKS.

11-2-30
Dun's Point
King's Green Shore
Rocky Point
Blue Water Beach

Assessment Roll and Tax List of Real Property in the Town of Scuttle Lake

Cass County, Minnesota, for Taxes for the Year 1959.

Form SCD 1-1-59... Indicate Type of Property: R-Residential, C-Commercial, I-Industrial, U-Utility, F-Farm, L-Lakeshore, T-Timber, M-Mineral

Table with columns: IN WHOSE NAME ASSESSED, TO WHOM TRANSFERRED, DESCRIPTION OF PROPERTY, TRUE AND FULL VALUATIONS, ASSESSED VALUATIONS, and FINAL EQUALIZED VALUE. Includes handwritten entries for property owners like Fannie Lego and Earl H. Thorgaard.

Table with columns: VALUATIONS BY SCHOOL DISTRICTS AS EQUALIZED BY DEPARTMENT OF TAXATION, TAX INCLUDING STATE HOMESTEAD, SPECIAL TAXES, TOTAL TAXES, PAID, WHEN PAID, Number of Receipt, March Settlement 1960, June Settlement 1960, November Settlement 1960, Collections to First Monday in January 1961, Delinquent on First Monday in January 1961, Total Delinquent Tax and Penalty, REMARKS.

112-30

Bud's Point, King's Green Shores, Rocky Point, Blue Water Beach

Lot 2 - Sec 18-142-30

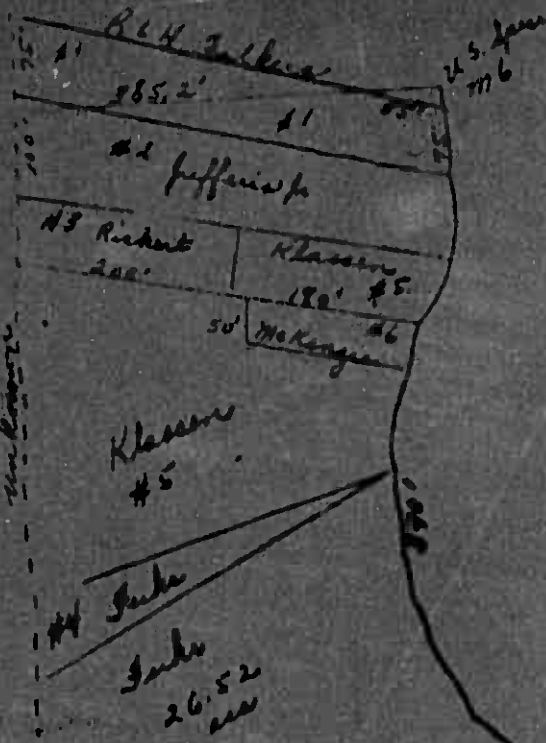
Line between Sect 1 & 2

W¹/₂ of Lot 2

Miller has Maple Products
20000

W¹/₂ S. Sec of 1/2 of S. E. 2

un-known



#1 - Falkner	.38ac
#2 - Jeffries Jr.	.8000
#3 - Rickett	.25ac
#4 - Fisher	.39ac
#5 - Klassen	2000
#6 - McKenney	.21ac

Assessment Roll and Tax List of Real Property in the Town of Turtle Lake

Cass County, Minnesota, for Taxes for the Year 1959.

Form 302 MILLER-DAVIS CO. MINNEAPOLIS

Indicate Type of Property: R-Residential, C-Commercial, I-Industrial, U-Utility, F-Farm, L-Lakeshore, T-Timber, M-Mineral

Table with columns: IN WHOSE NAME ASSESSED, TO WHOM TRANSFERRED, DESCRIPTION OF PROPERTY, TRUE AND FULL VALUATIONS, ASSESSED VALUATIONS, VALUATIONS BY SCHOOL DISTRICTS, TAXES, PAID, WHEN PAID, and REMARKS. Includes handwritten entries for M.B. & June Baker, U.S. of America, Robert J. Fischer, and Will City Warehouse, Inc.

112-30

Blue Water Beach, Rocky Point, King's Green Shores, Bush's Point

Assessment Roll and Tax List of Real Property in the Town of Turtle Lake

Form 300 MILLER-DAVIS CO., MINNEAPOLIS

Indicate Type of Property: R-Residential, C-Commercial, I-Industrial, U-Utility, F-Farm, L-Lakeshore, T-Timber, M-Mineral

Table with columns: IN WHOSE NAME ASSESSED, TO WHOM TRANSFERRED, DESCRIPTION OF PROPERTY, TRUE AND FULL VALUATIONS, ASSESSED VALUATIONS, FINAL EQUALIZED VALUE. Includes entries for Russell L. Rehm, U. S. of America, Edwin L. Violet V. Olson, William A. Jacobson, Jr., Leonard P. Peterson.

Cass County, Minnesota, for Taxes for the Year 1959.

Table with columns: VALUATIONS BY SCHOOL DISTRICTS AS EQUALIZED BY DEPARTMENT OF TAXATION, TAXES, PAID, WHEN PAID, Number of Receipt, March Settlement 1960, June Settlement 1960, November Settlement 1960, Collections to First Monday in January 1961, Delinquent on First Monday in January 1961, Total Delinquent Tax and Penalty, REMARKS. Includes entries for Russell L. Rehm, U. S. of America, Edwin L. Violet V. Olson, William A. Jacobson, Jr., Leonard P. Peterson.

112-30

Brush's Point King's Green Shores

Rocky Point

Blue Water Beach

Assessment Roll and Tax List of Real Property in the Town of Justice Lake

Indicate Type of Property: R-Residential, C-Commercial, I-Industrial, U-Utility, F-Farm, L-Lakeshore, T-Timber, M-Mineral

Cass County, Minnesota, for Taxes for the Year 1959.

Table with columns: IN WHOSE NAME ASSESSED, TO WHOM TRANSFERRED, DESCRIPTION OF PROPERTY, TRUE AND FULL VALUATIONS, ASSESSED VALUATIONS, VALUATIONS BY SCHOOL DISTRICTS AS EQUALIZED BY DEPARTMENT OF TAXATION, SOLD FOR TAXES, PAID, WHEN PAID, Number of Receipt, March Settlement 1960, June Settlement 1960, November Settlement 1960, Penalty, Collections to First Monday in January 1961, Delinquent on First Monday in January 1961, Total Delinquent Tax and Penalty, REMARKS.

112-30

Blue Water Beach, Rocky Point, King's Green Shores, Blue's Point

Assessment Roll and Tax List of Real Property in the Town of Justice Lake

Cass County, Minnesota, for Taxes for the Year 1959.

Indicate Type of Property: R-Residential, C-Commercial, I-Industrial, U-Utility, F-Farm, L-Lakeshore, T-Timber, M-Mineral

Table with columns: IN WHOSE NAME ASSESSED, TO WHOM TRANSFERRED, DESCRIPTION OF PROPERTY, TRUE AND FULL VALUATIONS, ASSESSED VALUATIONS, VALUATIONS BY SCHOOL DISTRICTS AS EQUALIZED BY DEPARTMENT OF TALLATION, TAXES, PAID, WHEN PAID, Number of Receipt, March Settlement, June Settlement, November Settlement, Penalty, Collection to First Monday in January 1961, Delinquent on First Monday in January 1961, Total Delinquent Tax and Penalty, REMARKS.

712-30

Dual's Point King's Green Shores Rody Point Blue Water Beach

Assessment Roll and Tax List of Real Property in the Town of Little Lake

Cass County, Minnesota, for Taxes for the Year 1959

Form SCD MILLER-DAVIS CO., MINNEAPOLIS

Indicate Type of Property: R-Residential, C-Commercial, I-Industrial, U-Utility, F-Farm, L-Lakeshore, T-Timber, M-Mineral

Table with columns: IN WHOSE NAME ASSESSED, TO WHOM TRANSFERRED, DESCRIPTION OF PROPERTY, TRUE AND FULL VALUATIONS, ASSESSED VALUATIONS, VALUATIONS BY SCHOOL DISTRICTS AS EQUALIZED BY DEPARTMENT OF TAXATION, SOLD FOR TAXES, SPECIAL TAXES, TOTAL TAXES, PAID, WHEN PAID, Number of Receipt, March Settlement 1960, June Settlement 1960, November Settlement 1960, Collections to First Monday in January 1961, Delinquent on First Monday in January 1961, Total Delinquent Tax and Penalty, REMARKS.

Dual's Point King's Green Shores Rocky Point Blue Water Beach

Assessment Roll and Tax List of Real Property in the Town of Luthers Lake

Cass County, Minnesota, for Taxes for the Year 1959.

Indicate Type of Property: R-Residential, C-Commercial, I-Industrial, U-Utility, F-Farm, L-Lakeshore, T-Timber, M-Mineral

Table with columns: IN WHOSE NAME ASSESSED, TO WHOM TRANSFERRED, DESCRIPTION OF PROPERTY, TRUE AND FULL VALUATIONS, ASSESSED VALUATIONS, CALCULATIONS BY SCHOOL DISTRICTS AS EQUALIZED BY DEPARTMENT OF TAXATION, TAXES, PAID, WHEN PAID, Number of Receipt, March Settlement 1960, June Settlement 1960, November Settlement 1960, Penalty, Collections to First Monday in January 1961, Delinquent on First Monday in January 1961, Total Delinquent Tax and Penalty, REMARKS.

112-30

Dual's Point, King's Green Shores, Rocky Point, Pine Water Beach

Assessment Roll and Tax List of Real Property in the Town of Turtle Lake

Indicate Type of Property: R-Residential, C-Commercial, I-Industrial, U-Utility, F-Farm, L-Lakeshore, T-Timber, M-Mineral

Cass County, Minnesota, for Taxes for the Year 1959.

Table with columns: IN WHOSE NAME ASSESSED, TO WHOM TRANSFERRED, DESCRIPTION OF PROPERTY, TRUE AND FULL VALUATIONS, ASSESSED VALUATIONS, VALUATIONS BY SCHOOL DISTRICTS AS EQUALIZED BY DEPARTMENT OF TAXATION, SOLD FOR TAXES, SPECIAL TAXES, TOTAL TAXES, PAID, WHEN PAID, Number of Receipt, March Settlement 1960, June Settlement 1960, November Settlement 1960, Collections to First Monday in January 1961, Delinquent on First Monday in January 1961, Total Delinquent Tax and Penalty, REMARKS.

112-30

Bush's Point King's Green Shores Rocky Point Blue Water Beach

Assessment Roll and Tax List of Real Property in the Town of Jurtle Lake

Form 50 MILLER-DAVIS CO., MINNEAPOLIS

Indicate Type of Property: R-Residential, C-Commercial, I-Industrial, U-Utility, F-Farm, L-Lakeshore, T-Timber, M-Mineral

Cass County, Minnesota, for Taxes for the Year 1959.

IN WHOSE NAME ASSESSED	TO WHOM TRANSFERRED	DESCRIPTION OF PROPERTY				TRUE AND FULL VALUATIONS											FINAL EQUALIZED VALUE		
		SUBDIVISION	Sec. or Lot	Town or Block	No. of Acres of Land	LAND Exclusive of Structures and Improvements	BUILDINGS and Other Structures	MACHINERY Permanently Attached to Real Estate	TOTAL True and Full Value	RURAL			ALL OTHER			MACHINERY Permanently Attached to Real Estate		TOTAL ASSESSED VALUE	Total Assessed Value as Equalized by the Board of Review
										Acres	100ths	Homestead Up to \$4,000 20%	Over \$4,000 and Non-Homestead 33 1/3%	Timber Land Class Je 20%	Homestead Up to \$4,000 25%				
<i>Albert Thomas</i>		King's Green Shores																	
			21																
			22																
			23																
			24																
		<i>Outlot A</i>																	
			B																
			C																

SOLD FOR TAXES	VALUATIONS BY SCHOOL DISTRICTS AS EQUALIZED BY DEPARTMENT OF TALLATION						Tax including State Homestead	State Tax on Non-Homestead	SPECIAL TAXES	TOTAL TAXES	PAID	WHEN PAID	Number of Receipt	March Settlement 1960	June Settlement 1960	November Settlement 1960	Penalty	Collections to First Monday in January 1961	Penalty	Delinquent on First Monday in January 1961	Total Delinquent Tax and Penalty	REMARKS
	District No.	District No.	District No.	District No.	District No.	District No.																
	Rate	Rate	Rate	Rate	Rate	Rate																

King's Green Shores Bush's Point

Rocky Point Blue Water Beach

