

ASSESSMENT & TAX LIST - 1956

Turtle Lake

Assessment Roll and Tax List of Real Property in the Town of Turtle Lake

* Indicate Type of Property: R-Residential, C-Commercial, I-Industrial, U-Utility, F-Farm, L-Lakeshore, T-Timber, M-Mineral

Cass County, Minnesota, for Taxes for the Year 1956.

Table with columns: IN WHOSE NAME ASSESSED, TO WHOM TRANSFERRED, DESCRIPTION OF PROPERTY, TRUE AND FULL VALUATIONS, ASSESSED VALUATIONS, VALUATIONS BY SCHOOL DISTRICTS AS EQUALIZED BY DEPARTMENT OF TAXATION, SOLD FOR TAXES, PAID, WHEN PAID, Number of Receipt, March Settlement 1957, June Settlement 1957, Penalty, November Settlement 1957, Penalty, Collections to First Monday in January 1958, Penalty, Delinquent on First Monday in January 1958, Total Delinquent Tax and Penalty, REMARKS.

Assessment Roll and Tax List of Real Property in the Town of Turtle Lake

Cass County, Minnesota, for Taxes for the Year 1956.

Form 5C(45) (1-5-55) Indicate Type of Property: R-Residential, C-Commercial, I-Industrial, U-Utility, F-Farm, L-Lakeshore, T-Timber, M-Mineral

Table with columns: IN WHOSE NAME ASSESSED, TO WHOM TRANSFERRED, DESCRIPTION OF PROPERTY, TRUE AND FULL VALUATIONS, ASSESSED VALUATIONS, VALUATIONS BY SCHOOL DISTRICTS AS EQUALIZED BY DEPARTMENT OF TAXATION, TAXES, PAID, WHEN PAID, etc.

142-30

John's Point

King's Green Shore

Rocky Point

Assessment Roll and Tax List of Real Property in the Town of Down of South Lake

Cass County, Minnesota, for Taxes for the Year 1956.

Form SC13 (56) BILLS-BY-STATE, MINNAPOLIS. Indicate Type of Property: R-Residential, C-Commercial, I-Industrial, U-Utility, F-Farm, L-Lakeshore, T-Timber, M-Mineral

Table with columns: IN WHOSE NAME ASSESSED, TO WHOM TRANSFERRED, SUBDIVISION, TRUE AND FULL VALUATIONS (LAND, BUILDINGS, MACHINERY, TOTAL), ASSESSED VALUATIONS (RURAL, ALL OTHER, MACHINERY, TOTAL ASSESSED), VALUATIONS BY SCHOOL DISTRICTS AS EQUALIZED BY DEPARTMENT OF TAXATION, TAXES (SOLD FOR, SPECIAL, TOTAL), PAID, WHEN PAID, Number of Receipt, Settlement dates (March, June, November, January), Delinquent dates (January), Total Delinquent Tax and Penalty, REMARKS.

142-30

ush's Point

King's Green Shop

Rocky Point

Assessment Roll and Tax List of Real Property in the Town of Turtle Lake, Cass County, Minnesota, for Taxes for the Year 1956.

Form 30 (56) UNIFORM COUNTY, MINNESOTA

* Indicate Type of Property: R-Residential, C-Commercial, I-Industrial, U-Utility, F-Farm, L-Lakeshore, T-Timber, M-Mineral

Cass County, Minnesota, for Taxes for the Year 1956.

Table with columns: IN WHOSE NAME ASSESSED, TO WHOM TRANSFERRED, DESCRIPTION OF PROPERTY, TRUE AND FULL VALUATIONS, ASSESSED VALUATIONS, VALUATIONS BY SCHOOL DISTRICTS AS EQUALIZED BY DEPARTMENT OF TAXATION, TAXES, PAID, WHEN PAID, etc.

142-30
Mah's Point
Rocky Point

Assessment Roll and Tax List of Real Property in the Town of Turtle Lake

Cass County, Minnesota, for Taxes for the Year 1956.

Form 50 (55) ... Indicate Type of Property: R-Residential, C-Commercial, I-Industrial, U-Utility, F-Farm, L-Lakeshore, T-Timber, M-Mineral

Table with columns: IN WHOSE NAME ASSESSED, TO WHOM TRANSFERRED, DESCRIPTION OF PROPERTY, TRUE AND FULL VALUATIONS, ASSESSED VALUATIONS, VALUATIONS BY SCHOOL DISTRICTS AS EQUALIZED BY DEPARTMENT OF TAXATION, SOLD FOR TAXES, SPECIAL TAXES, TOTAL TAXES, PAID, WHEN PAID, Number of Receipt, March Settlement 1957, June Settlement 1957, November Settlement 1957, Collections to First Monday in January 1958, Delinquent on First Monday in January 1958, Total Delinquent Tax and Penalty, REMARKS.

Wesley Bergley
Adolph M. Bradson

Frank J. & Dorothea J. Elk
Hope Lutheran Church

State of Minnesota

Apch Stares
State of Minnesota

Summary row with totals for various columns.

142-30
Cash's Point
Karl's Green Sheet
Rocky Point

Assessment Roll and Tax List of Real Property in the Town of South Lake

Cass County, Minnesota, for Taxes for the Year 1956

Form 50D (56) - MINNESOTA DEPARTMENT OF REVENUE

Table with columns: IN WHOSE NAME ASSESSED, TO WHOM TRANSFERRED, DESCRIPTION OF PROPERTY, TRUE AND FULL VALUATIONS, ASSESSED VALUATIONS, VALUATIONS BY SCHOOL DISTRICTS AS EQUALIZED BY DEPARTMENT OF TAXATION, SOLD FOR TAXES, PAID, WHEN PAID, etc.

U. S. of America
U.S. of America
Henry B. Hart
U. S. of America
U. S. of America
State of Minnesota
U. S. of America
U. S. of America
U. S. of America
State of Minnesota
U. S. of America
U. S. of America
U. S. of America
U. S. of America
State of Minnesota
U. S. of America
U. S. of America
State of Minnesota

1 N E 1/4 of N E 1/4
2 N W 1/4 of N E 1/4
3 3/4 of S W 1/4 of N E 1/4
4 S E 1/4 of N E 1/4
5 1/2 of S E 1/4 of N E 1/4
6 1/2 of N E 1/4 of N W 1/4
7 N W 1/4 of N W 1/4
8 S W 1/4 of N W 1/4
9 S E 1/4 of N W 1/4 - Lot 4
10 1/2 of N E 1/4 of N W 1/4 Lot 3
11 N E 1/4 of S W 1/4 - Lot 6
12 N W 1/4 of S W 1/4 Lot 5
13 S W 1/4 of S W 1/4
14 S E 1/4 of S W 1/4
15 Lot 2
16 N E 1/4 of S E 1/4
17 N W 1/4 of S E 1/4 Lot 7
18 S W 1/4 of S E 1/4
19 S E 1/4 of S E 1/4 Lot 8
20

Acres 100s
No. School District
Indicate Homestead Yes or No
Indicate Agricultural Yes or No
Indicate Type of Property
LAND Exclusive of Structures and Improvements
BUILDINGS and Other Structures
MACHINERY Permanently Attached to Real Estate
TOTAL True and Full Value
RURAL Homestead Up to \$4,000 20%
Over \$4,000 and Non-Homestead 33 1/3%
Timber Land Class 3c 20%
ALL OTHER Homestead Up to \$4,000 25%
Over \$4,000 and Non-Homestead 40%
MACHINERY Permanently Attached to Real Estate 33 1/3%
TOTAL ASSESSED VALUE
Total Assessed Value as Equalized by the Board of Review
FINAL EQUALIZED VALUE

Table with columns: SOLD FOR TAXES, VALUATIONS BY SCHOOL DISTRICTS AS EQUALIZED BY DEPARTMENT OF TAXATION, TAX including State Homestead, State Tax on Non-Homestead, SPECIAL TAXES, TOTAL TAXES, PAID, WHEN PAID, Number of Receipt, March Settlement 1957, June Settlement 1957, Penalty, November Settlement 1957, Penalty, Collections to First Monday in January 1958, Penalty, Delinquent on First Monday in January 1958, Total Delinquent Tax and Penalty, REMARKS

2nd Half Paid OCT 31 1957 15941
1st Half Paid OCT 31 1956 6912

142-30
Fish's Point
King's Green Shore
Rocky Point

Assessment Roll and Tax List of Real Property in the Town of *North Lake*

Cass County, Minnesota, for Taxes for the Year 1956.

Form 300 (56) ... Indicate Type of Property: R-Residential, C-Commercial, I-Industrial, U-Utility, F-Farm, L-Lakeshore, T-Timber, M-Mineral

Table with columns: IN WHOSE NAME ASSESSED, TO WHOM TRANSFERRED, DESCRIPTION OF PROPERTY, TRUE AND FULL VALUATIONS, ASSESSED VALUATIONS, VALUATIONS BY SCHOOL DISTRICTS AS EQUALIZED BY DEPARTMENT OF TAXATION, TAXES, PAID, WHEN PAID, etc.

(Continued on next page)

142-30 ... Point ... Point

Assessment Roll and Tax List of Real Property in the Town of Turtle Lake

Indicate Type of Property: R-Residential, C-Commercial, I-Industrial, U-Utility, F-Farm, L-Lakeshore, T-Timber, M-Mineral

Cass County, Minnesota, for Taxes for the Year 1956.

Table with columns: IN WHOSE NAME ASSESSED, TO WHOM TRANSFERRED, DESCRIPTION OF PROPERTY, TRUE AND FULL VALUATIONS, ASSESSED VALUATIONS, VALUATIONS BY SCHOOL DISTRICTS AS EQUALIZED BY DEPARTMENT OF TAXATION, TAXES, PAID, WHEN PAID, Number of Receipt, March Settlement 1957, June Settlement 1957, November Settlement 1957, Collections to First Monday in January 1958, Delinquent on First Monday in January 1958, Total Delinquent Tax and Penalty, REMARKS.

142-30

Bush's Point

King's Green Shore

Rocky Point

Assessment Roll and Tax List of Real Property in the Town of Turtle Lake

Cass County, Minnesota, for Taxes for the Year 1956.

Indicate Type of Property: R-Residential, C-Commercial, I-Industrial, U-Utility, F-Farm, L-Lakeshore, T-Timber, M-Mineral

Table with columns: IN WHOSE NAME ASSESSED, TO WHOM TRANSFERRED, DESCRIPTION OF PROPERTY, TRU AND FULL VALUATIONS, ASSESSED VALUATIONS, VALUATIONS BY SCHOOL DISTRICTS AS EQUALIZED BY DEPARTMENT OF TAXATION, TAXES, PAID, WHEN PAID, etc.

(Continued on next page)

142-30 Bush's Point King's Green Shore Rocky Point

Assessment Roll and Tax List of Real Property in the Town of Turtle Lake

* Indicate Type of Property: R-Residential, C-Commercial, I-Industrial, U-Utility, F-Farm, L-Lakeshore, T-Timber, M-Mineral

Cass County, Minnesota, for Taxes for the Year 1956.

Table with columns: IN WHOSE NAME ASSESSED, TO WHOM TRANSFERRED, DESCRIPTION OF PROPERTY, TRUE AND FULL VALUATIONS, ASSESSED VALUATIONS, VALUATIONS BY SCHOOL DISTRICTS AS EQUALIZED BY DEPARTMENT OF TAXATION, TAXES, PAID, WHEN PAID, Number of Receipts, March Settlement 1957, June Settlement 1957, Penalty, November Settlement 1957, Penalty, Collections to First Monday in January 1958, Penalty, Delinquent on First Monday in January 1958, Total Delinquent Tax and Penalty, REMARKS.

142-30

Bush's Point

King's Green Shore

Rocky Point

Assessment Roll and Tax List of Real Property in the Town of Turtle Lake

Cass County, Minnesota, for Taxes for the Year 1956.

Indicate Type of Property: R-Residential, C-Commercial, I-Industrial, U-Utility, F-Farm, L-Lakeshore, T-Timber, M-Mineral

142-30

Table with columns: IN WHOSE NAME ASSESSED, TO WHOM TRANSFERRED, DESCRIPTION OF PROPERTY, TRUE AND FULL VALUATIONS, ASSESSED VALUATIONS, VALUATIONS BY SCHOOL DISTRICTS AS EQUALIZED BY DEPARTMENT OF TAXATION, TAXES, PAID, WHEN PAID, Number of Receipt, March Settlement 1957, June Settlement 1957, Penalty, November Settlement 1957, Penalty, Collections to First Monday in January 1958, Penalty, Delinquent on First Monday in January 1958, Total Delinquent Tax and Penalty, REMARKS.

Roy & Helen M. Folkers
Claus & Inga B. Fuhr

U.S. of America
Miller Lumber Products, Inc.
P.P. Klassen

James & Leda L. McHenry

Roy & Helen M. Folkers

Clark O. Filseth

Selby Black

Raymond & Anna Stephenson

Ed + Mary E. Barricks

Bush's Point

King's Green Shore

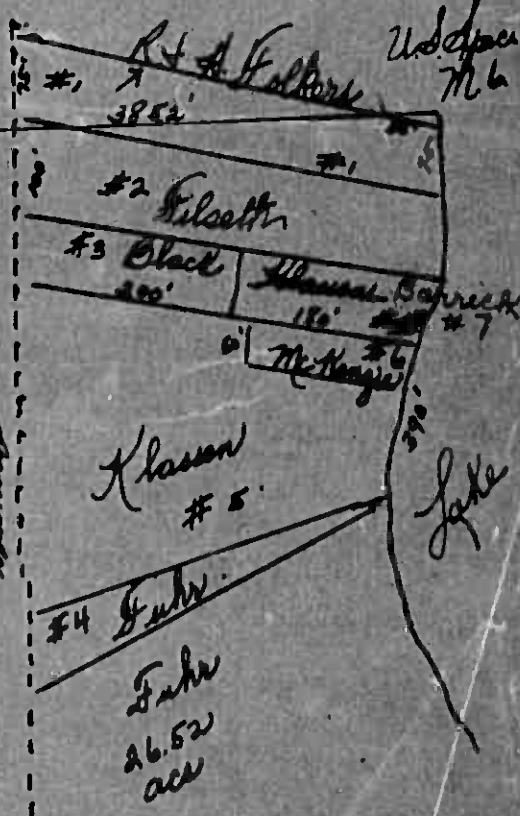
Rocky Point

Lot # 2
Dec 15-14 2-30

Line between Lot 1 & 2

2 1/2 of Lot # 2
Mills for maple production
20 acres

Rt. d. line of 1/2 of Lot
McKenzie



Upper
Mc

#1 Follers	38 ac.
#2 Filseth	80 ac
#3 Black	2.5 ac.
#4 Fuhr.	38 ac
#5 Klassen	2 ac
#6 McKenzie	21 ac

ck 5-1-56.

Assessment Roll and Tax List of Real Property in the Town of Turtle Lake

Cass County, Minnesota, for Taxes for the Year 1956.

Form 502 (5-56) Indicate Type of Property: R-Residential, C-Commercial, I-Industrial, U-Utility, F-Farm, L-Lakeshore, T-Timber, M-Mineral

Table with columns: IN WHOSE NAME ASSESSED, TO WHOM TRANSFERRED, DESCRIPTION OF PROPERTY, TRUE AND FULL VALUATIONS, VALUATIONS BY SCHOOL DISTRICTS AS EQUALIZED BY DEPARTMENT OF TAXATION, SOLD FOR TAXES, PAID, WHEN PAID, Number of Receipt, March Settlement 1957, June Settlement 1957, November Settlement 1957, Collections to First Monday in January 1958, Delinquent on First Monday in January 1958, Total Delinquent Tax and Penalty, REMARKS.

142-30

Bush's Point

King's Green Shore

Rocky Point

Assessment Roll and Tax List of Real Property in the Town of Turtle Lake

Indicate Type of Property: R-Residential, C-Commercial, I-Industrial, U-Utility, F-Farm, L-Lakeshore, T-Timber, M-Mineral

Cass County, Minnesota, for Taxes for the Year 1956.

Table with columns: IN WHOSE NAME ASSESSED, TO WHOM TRANSFERRED, DESCRIPTION OF PROPERTY, TRUE AND FULL VALUATIONS, ASSESSED VALUATIONS, VALUATIONS BY SCHOOL DISTRICTS AS EQUALIZED BY DEPARTMENT OF TAXATION, TAXES, PAID, WHEN PAID, etc.

142-30

Bush's Point

King's Green Shore

Rocky Point

117.06 Added

Assessment Roll and Tax List of Real Property in the Town of Turtle Lake

Indicate Type of Property: R-Residential, C-Commercial, I-Industrial, U-Utility, F-Farm, L-Lakeshore, T-Timber, M-Mineral

Table with columns: IN WHOSE NAME ASSESSED, TO WHOM TRANSFERRED, SUBDIVISION, TRUE AND FULL VALUATIONS, ASSESSED VALUATIONS, and FINAL EQUALIZED VALUE. Includes handwritten entries for various property owners like E. V. & Helen Marie Hockett, M. E. Quint, and others.

Cass County, Minnesota, for Taxes for the Year 1956.

Table with columns: SOLD FOR TAXES, VALUATIONS BY SCHOOL DISTRICTS AS EQUALIZED BY DEPARTMENT OF TAXATION, SPECIAL TAXES, TOTAL TAXES, PAID, WHEN PAID, Number of Receipt, and REMARKS. Includes handwritten entries for various tax payments and dates.

142-30

Bush's Point

King's Green Shore

Rocky Point

Assessment Roll and Tax List of Real Property in the Town of Turtle Lake

Cass County, Minnesota, for Taxes for the Year 1956.

Indicate Type of Property: R-Residential, C-Commercial, I-Industrial, U-Utility, F-Farm, L-Lakeshore, T-Timber, M-Mineral

Table with columns: IN WHOSE NAME ASSESSED, TO WHOM TRANSFERRED, DESCRIPTION OF PROPERTY, TRUE AND FULL VALUATIONS, ASSESSED VALUATIONS, VALUATIONS BY SCHOOL DISTRICTS AS EQUALIZED BY DEPARTMENT OF TAXATION, SOLD FOR TAXES, PAID, WHEN PAID, Number of Receipt, March Settlement 1957, June Settlement 1957, November Settlement 1957, Penalty, Collections to First Monday in January 1958, Delinquent on First Monday in January 1958, Total Delinquent Tax and Penalty, REMARKS.

142-39

Bush's Point

King's Green Shore

Rocky Point

U. S. of America

U. S. of America

State of Minnesota

State of Minnesota

State of Minnesota

State of Minnesota

U. S. of America

U. S. of America

U. S. of America

U. S. of America

State of Minnesota

Glenn Bennett

Jeanette Hopson John H. Hopson, Jr.

NE 1/4 of NE 1/4 31.142.30

NW 1/4 of NE 1/4

SW 1/4 of NE 1/4

SE 1/4 of NE 1/4

NE 1/4 of NW 1/4

NW 1/4 of NW 1/4 Lot 1

SW 1/4 of NW 1/4 Lot 2

SE 1/4 of NW 1/4

NE 1/4 of SW 1/4

NW 1/4 of SW 1/4 Lot 3

SW 1/4 of SW 1/4 Lot 4

SE 1/4 of SW 1/4

NE 1/4 of SE 1/4

NW 1/4 of SE 1/4

SW 1/4 of SE 1/4

SE 1/4 of SE 1/4

401

Table with columns: LAND Exclusive of Structures and Improvements, BUILDINGS and Other Structures, MACHINERY Permanently Attached to Real Estate, TOTAL True and Full Value, RURAL (Homestead, Over \$4,000 and Non-Homestead, Timber Land Class), ALL OTHER (Homestead, Over \$4,000 and Non-Homestead, MACHINERY Permanently Attached to Real Estate), TOTAL ASSESSED VALUE, Total Assessed Value as Equalized by the Board of Review, FINAL EQUALIZED VALUE.

Table with columns: SOLD FOR TAXES, District No., District Rate, District No., District Rate, District No., District Rate, District No., District Rate, District No., District Rate, Tax Including State Homestead, State Tax on Non-Homestead, SPECIAL TAXES, TOTAL TAXES, PAID, WHEN PAID, Number of Receipt, March Settlement 1957, June Settlement 1957, November Settlement 1957, Penalty, Collections to First Monday in January 1958, Delinquent on First Monday in January 1958, Total Delinquent Tax and Penalty, REMARKS.

OCT 18 1957 7888
MAY 31 1957 7923
MAY 31 1957 7361
PAID IN FULL

902

1098

2000

902

77

48

48

125

1762

1098

2860

42

42

42

42

1804

1098

2902

2902

902

1098

2000

902

Assessment Roll and Tax List of Real Property in the Town of Turtle Lake

Cass County, Minnesota, for Taxes for the Year 1956.

Indicate Type of Property: R-Residential, C-Commercial, I-Industrial, U-Utility, F-Farm, L-Lakeshore, T-Timber, M-Mineral

Table with columns: IN WHOSE NAME ASSESSED, TO WHOM TRANSFERRED, DESCRIPTION OF PROPERTY, TRU AND FULL VALUATIONS, ASSESSED VALUATIONS, VALUATIONS BY SCHOOL DISTRICTS AS EQUALIZED BY DEPARTMENT OF TAXATION, TAXES, PAID, WHEN PAID, Number of Receipt, March Settlement, June Settlement, November Settlement, Collections to First Monday in January, Delinquent on First Monday in January, Total Delinquent Tax and Penalty, REMARKS.

142-30

Bush's Point

King's Green Shord

Rocky Point

Assessment Roll and Tax List of Real Property in the Town of Turtle Lake

Indicate Type of Property: R-Residential, C-Commercial, I-Industrial, U-Utility, F-Farm, L-Lakeshore, T-Timber, M-Mineral

Cass County, Minnesota, for Taxes for the Year 1956.

Table with columns: IN WHOSE NAME ASSESSED, TO WHOM TRANSFERRED, DESCRIPTION OF PROPERTY, TRUER AND FULL VALUATIONS, ASSESSED VALUATIONS, VALUATIONS BY SCHOOL DISTRICTS AS EQUALIZED BY DEPARTMENT OF TAXATION, TAXES, PAID, WHEN PAID, Number of Receipt, March Settlement 1957, June Settlement 1957, November Settlement 1957, Collections to First Monday in January 1958, Delinquent on First Monday in January 1958, Total Delinquent Tax and Penalty, REMARKS.

(Continued on next page)

142-30

Bush's Point

King's Green Shore

Rocky Point

Assessment Roll and Tax List of Real Property in the Town of Turtle Lake

Indicate Type of Property: R-Residential, C-Commercial, I-Industrial, U-Utility, F-Farm, L-Lakeshore, T-Timber, M-Mineral

Table with columns: IN WHOSE NAME ASSESSED, TO WHOM TRANSFERRED, DESCRIPTION OF PROPERTY, TRUE AND FULL VALUATIONS, ASSESSED VALUATIONS, and FINAL EQUALIZED VALUE. Includes handwritten entries for lots 6, 10-17, 18, and 19.

Cass County, Minnesota, for Taxes for the Year 1956.

Table with columns: SOLD FOR TAXES, VALUATIONS BY SCHOOL DISTRICTS AS EQUALIZED BY DEPARTMENT OF TAXATION, Tax including State Homestead, State Tax on Non-Homestead, SPECIAL TAXES, TOTAL TAXES, PAID, WHEN PAID, Number of Receipt, March Settlement 1957, June Settlement 1957, November Settlement 1957, Penalty, Collections to First Monday in January 1958, Delinquent on First Monday in January 1958, Total Delinquent Tax and Penalty, and REMARKS. Includes handwritten entries for lots 10-15 and 20.

142-30

Bush's Point

King's Green Shore

Rocky Point

Assessment Roll and Tax List of Real Property in the Town of Turtle Lake, Cass County, Minnesota, for Taxes for the Year 1956.

Indicate Type of Property: R-Residential, C-Commercial, I-Industrial, U-Utility, F-Farm, L-Lakeshore, T-Timber, M-Mineral

Table with columns: IN WHOSE NAME ASSESSED, TO WHOM TRANSFERRED, DESCRIPTION OF PROPERTY, TRU AND FULL VALUATIONS, ASSESSED VALUATIONS, VALUATIONS BY SCHOOL DISTRICTS AS EQUALIZED BY DEPARTMENT OF TAXATION, TAXES, PAID, WHEN PAID, Number of Receipt, March Settlement 1957, June Settlement 1957, November Settlement 1957, Collections to First Monday in January 1958, Delinquent on First Monday in January 1958, Total Delinquent Tax and Penalty, REMARKS.

142-30

Bush's Point

King's Green Shore

Rocky Point

Assessment Roll and Tax List of Real Property in the Town of Turtle Lake

Indicate Type of Property: R-Residential, C-Commercial, I-Industrial, U-Utility, F-Farm, L-Lakeshore, T-Timber, M-Mineral

Cass County, Minnesota, for Taxes for the Year 1956

Table with columns: IN WHOSE NAME ASSESSED, TO WHOM TRANSFERRED, DESCRIPTION OF PROPERTY, TRUE AND FULL VALUATIONS, ASSESSED VALUATIONS, VALUATIONS BY SCHOOL DISTRICTS AS EQUALIZED BY DEPARTMENT OF TAXATION, TAXES, PAID, WHEN PAID, Number of Receipt, March Settlement 1957, June Settlement 1957, November Settlement 1957, Collections to First Monday in January 1958, Delinquent on First Monday in January 1958, Total Delinquent Tax and Penalty, REMARKS.

142-30

Bush's Point

King's Green Shores

Rocky Point

