

ASSESSMENT & TAX LIST
Turtle Lake
1953

Assessment of

COLLECTIONS OF TAXES OF 1953

Town

OF Tuttle Lake

CASS COUNTY, MINNESOTA

FUNDS	MARCH SETTLEMENT 1953	JUNE SETTLEMENT 1953	NOV. SETTLEMENT 1953	Amount Collected from Nov. 1952 to First Monday in Jan. 1953	REDUCTIONS	Total Reductions and Collected	BALANCE UNCOLLECTED	ADDITIONS	Total Uncollected to First Monday in January, 1953
State--Non-Homestead, State--Homestead,	3672 4508	6074 10207	2921 5378	34 81					
County Revenue, County Road and Bridge, County Welfare, County Bond and Interest, <i>R & B Leasing</i>	24162 13575 43133 9127 1709	59709 30738 97665 20666 3866	28827 16196 51460 10889 2037	436 245 778 165 31					
Town Revenue, Town Road and Bridge, Town Drag, Town State Loan, <i>Fire Telephone</i>	7257 20747 854 4269 4269	16832 46977 1933 9666 9666	8658 29752 1019 5093 5093	131 374 15 77 77					
School Local 1 Mill, School Special, School State Loan, Deficiency Tuition Transportation <i>C.O. & J.F.S.</i>	854 35792 1708 13916 4073	1933 59624 3966 31511 4221	1019 36259 2037 16603 4858	15 387 31 251 73					
	193624	414754	223099	3201					

	SCHOOL DISTRICT NO.	LOCAL 1 MILL	SPECIAL	STATE LOAN	Transport. B & W.	C. O.	O & J F.S.	TOTALS
MARCH SETTLEMENT	<i>Q#5</i> <i>Na#5</i>	276 579	6896 28896		552 1156	4496 9920	1316 2757	13586 42807
	Totals	854	35792		1708	13916	4073	56343
JUNE SETTLEMENT	<i>Q#5</i> <i>Na#5</i>	1481 452	37036 22599		2863 903	24148 7363	7066 2155	72694 33461
	Totals	1933	59624		3966	31511	9221	106155
NOVEMBER SETTLEMENT	<i>Q#5</i> <i>Na#5</i>	587 432	14672 21587		1174 863	9566 7037	2799 2057	28788 31978
	Totals	1019	36259		2037	16603	4858	60776
NOVEMBER to JANUARY	<i>Q#5</i>	15	387		31	251	73	757
	Totals	15	387		31	251	73	757
ADDITIONS	School District No.							
	Totals							
REDUCTIONS	School District No.							
	Totals							

11-20

11-20 King's Point

King's Green Store

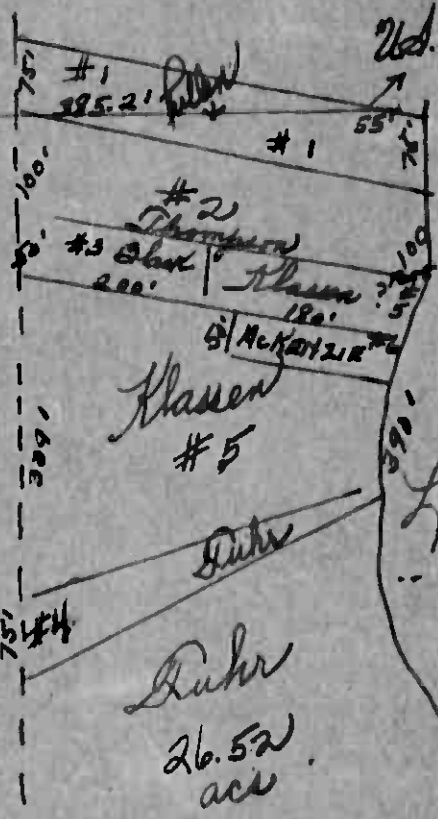
Lot # 2
 Dec 15-142-30

Lot 1

Line between Lot 1 & 2

2 1/2 of Lot 2
 Achenbauer
 70 acres

North line of the 1/2 of Lot 2
 Thompson



- #1 ~~Pullen~~ 3.75 ac
- #2 Thompson .80 ac.
- #3 Black .25 ac.
- #4 Duhr 375 ac.
- #5 Klassen 2. ac.
- #6 McKenzie .21 ac.

Map revised
 1953

Assessment Roll and Tax List of Real Property in the Town of Turtle Lake

Cass County, Minnesota, for Taxes for the Year 1953.

Form 500

DEPT. OF REVENUE (53) JULY-30-53

IN WHOSE NAME ASSESSED	TO WHOM TRANSFERRED	DESCRIPTION OF PROPERTY							TRUE AND FULL VALUATIONS					ASSESSED VALUATIONS			FINAL EQUALIZED VALUE				
		SUBDIVISION	Sec. or Lot	Town or Block	No. of Acres of Land	No. School District	No. State District	No. Loc. or Ap. District	LAND Structures and Improvements	BUILDINGS and Other Structures	MACHINERY Permanently Attached to Real Estate	TOTAL True and Full Value	RURAL		ALL OTHER			MACHINERY Permanently Attached to Real Estate	TOTAL ASSESSED VALUE	Total Assessed Value as Equalized by the Board of Review	
													Homestead Up to \$4,000	Over \$4,000 and Non-Homestead	Homestead Up to \$4,000	Over \$4,000 and Non-Homestead					Dollars
State of Minnesota		NE 1/4 of NE 1/4			20 1/2																
State of Minnesota		NW 1/4 of NE 1/4																			
U. S. of America		SW 1/4 of NE 1/4																			
U. S. of America		SE 1/4 of NE 1/4																			
		SW 1/4 of NW 1/4 of T16N14E																			
State of Minnesota		NE 1/4 of NW 1/4																			
		NW 1/4 of NW 1/4																			
	Marsella Beck	SW 1/4 of NW 1/4			20																
U. S. of America		NE 1/4 of SW 1/4																			
U. S. of America		NW 1/4 of SW 1/4																			
U. S. of America		SW 1/4 of SW 1/4																			
U. S. of America		SE 1/4 of SW 1/4																			
State of Minnesota		NW 1/4 of NW 1/4 of S16N14E																			
U. S. of America		NE 1/4 of SE 1/4																			
U. S. of America		NW 1/4 of SE 1/4																			
U. S. of America		SW 1/4 of SE 1/4																			
U. S. of America		SE 1/4 of SE 1/4																			

SOLD FOR TAXES	VALUATIONS BY SCHOOL DISTRICTS AS EQUALIZED BY DEPARTMENT OF TAXATION						Tax Including State Homestead	State Tax on Non-Homestead	SPECIAL TAXES	TOTAL TAXES	PAID	WHEN PAID	Number of Receipts	March Settlement 1954	June Settlement 1954	November Settlement 1954	Collections to First Monday in January 1955	Delinquent on First Monday in January 1955	Total Delinquent Tax and Penalty	REMARKS
	District No.	Rate	District No.	Rate	District No.	Rate														
	Dollars	Mills	Dollars	Mills	Dollars	Mills														

112-30

Fish's Point King's Queen Shores

112-30

Form 5CD
UNIFORM (53) MILES-GAYE COMPANY, MINNEAPOLIS

IN WHOSE NAME ASSESSED	TO WHOM TRANSFERRED	DESCRIPTION OF PROPERTY				TRUE AND FULL VALUATIONS												FINAL EQUALIZED VALUE Dollars	
		SUBDIVISION	Sec. or Lot	Town or Block	Number of Acres of Land No. School District	Indicate Homestead Yes or No	Indicate Agricultural Use Yes or No	LAND EXCLUSIVE OF STRUCTURES AND IMPROVEMENTS			BUILDINGS AND OTHER STRUCTURES				MACHINERY Permanently Attached to Real Estate		TOTAL ASSESSED VALUE Dollars		Total Assessed Value as Equalized by the Board of Review Dollars
								Dollars	Dollars	Dollars	Dollars	Dollars	Dollars	Dollars	Dollars	Dollars			
Herbertson Bridge Co.		NW 1/4 of NW 1/4	36	142 30	5														
John M. Ramey L. Tulander		lots 2 + 1/2 of 1/2 of NE 1/4 of S 1/4 1/2 of S 1/4 of NE 1/4 of S 1/4				76													
Joseph L. Mueller C. L. Chiver		SW 1/4 of NW 1/4 2 1/2 of lot 10, 1/2 of 1/2 of NE 1/4 of S 1/4 1/2 of SW 1/4 of NE 1/4 of S 1/4		13 08 14 08		76 70													
U. of America V. of America		1/2 NW 1/4 of SW 1/4 1/2 SW 1/4 of SW 1/4																	
L. Tulander Wm. J. & Eunice O. Engelhardt		1/2 of SE 1/4 of SW 1/4 lots 7, 8 + 1/2 of NW 1/4 of S 1/4		28 47 30		70 "													
Carl E. E. Baughn Clifford Collins		1/2 NW 1/4 of SE 1/4 1/2 of 1/2 of NE 1/4 of S 1/4		20 10		" 70													
Frances Bushman & Eli L. Quereau		6.50 of 1/2 of lot 10, 1/2 of 1/2 of NW 1/4 of S 1/4 1/2 of NW 1/4 of S 1/4																	

SOLD FOR TAXES	VALUATIONS BY SCHOOL DISTRICTS AS EQUALIZED BY DEPARTMENT OF TAXATION						Tax including State Homestead Dollars	State Tax on Non-Homestead Dollars	SPECIAL TAXES Dollars	TOTAL TAXES Dollars	PAID	WHEN PAID	Number of Receipts	March Settlement 1954	June Settlement 1954	November Settlement 1954	Penalty	Collections to First Monday in January 1955	Penalty	Delinquent on First Monday in January 1955	Total Delinquent Tax and Penalty	REMARKS
	District No.	District No.	District No.	District No.	District No.	District No.																

Pastor's Point
King's Green Shores

