

ASSESSMENT & TAX LIST

Turtle Lake

1949

List of Lands in the _____ of _____, County of _____, Minn., for the Year 19____, Which have Become Homesteads or Ceased to be Homesteads
SINCE THE LAST REAL ESTATE ASSESSMENT DATE

Form 24 Miller-Davis Company, Minneapolis, State Form No. 67

LANDS BECOMING HOMESTEADS

LANDS CEASING TO BE HOMESTEADS

NAME OF OWNER	School District	DESCRIPTION OF PROPERTY				NAME OF OWNER	School District	DESCRIPTION OF PROPERTY			
		SUBDIVISION	Sec. or Lot	Town or Range	Number of Acres of Land			SUBDIVISION	Sec. or Lot	Town or Range	Number of Acres of Land

INCREASE OR DECREASE in Value of Property Heretofore Assessed, by the Erection or Destruction of Buildings or Structures Thereon

Urban Property Assessed at 40 Per Cent of True and Full Value.
(Homesteads up to \$4,000 True and Full Value 25 Per Cent.)

Rural Property Assessed at 33 1/4 Per Cent of True and Full Value.
(Homesteads up to \$4,000 True and Full Value 20 Per Cent.)

FORM 3 MILLER-DAVIS COMPANY, MINNEAPOLIS

NAMES OF PROPERTY OWNERS	DESCRIPTION	Sec. or Lot	Town or Block	Range	True and Full Value of Structures worth more than \$100 each	KIND OF STRUCTURES	Assessed Value of Additional Structures	Reduction of Assessed Value on Account of Loss occasioned by Fire, Flood or otherwise

Increase or Decrease in Value of Property because of Erection or Destruction of Buildings or Structures in township or village of _____

Names of Owners	Description	Sec. or Lot	Town or Block	Range	True and Full Value of Buildings	Kind of Building	Assessed Value of Buildings	Assessed Value of Buildings no longer on prop.
Land Thomas Humphrey	lot 8 W. of Road	20	142	30	600.00	Stielgang	200.00	120.00
Klaas Bakker	NW 1/4 NW 1/4 on 3.33 acres of 220-26	14	141	30	250	Bank	50.00	
Ed Hofman	lot 7 of 220-26	35	142	30	225		75	
Paul T. Nygren	lot 12	35	142	30	105	cottage	35	
Paul T. Nygren	lot 9 of lot 12	35	142	30	126	cottage	42	
Paul T. Nygren	lot 10 of lot 12	35	142	30	126	cottage	42	
Clarence Hopew	lots	5	142	30	200	under construction house	40	
Eli Olevat	N 1/4 Lot 10				1500	house		
Low Amey	N 1/2 of 28'4" NW 1/4	4	141	30	100	garage	20	

INCREASE OR DECREASE in Value of Property Heretofore Assessed, by the Erection or Destruction of Buildings or Structures Thereon

Urban Property Assessed at 40 Per Cent of True and Full Value.
(Homesteads up to \$4,000 True and Full Value 25 Per Cent.)

Rural Property Assessed at 33 1/2 Per Cent of True and Full Value.
(Homesteads up to \$4,000 True and Full Value 20 Per Cent.)

NAMES OF PROPERTY OWNERS	DESCRIPTION	Sec. or Lot	Town or Block	Rng.	True and Full Value of Structures worth more than \$100 each Dollars	KIND OF STRUCTURES	Assessed Value of Additional Structures Dollars	Reduction of Assessed Value on Account of Loss occasioned by Fire, Flood or otherwise Dollars
<p><i>Turtle Lake - Division in Sec. 35</i></p> <p><i>Line 14 - Page 51 NW 1/4 SE 1/4 below - 17.5</i></p> <p><i>split now to lines 3, 18 + 21</i></p> <p><i>3 - E 150' of W 700' of NW 1/4 SE 1/4 81 - 4.5 acs</i></p> <p><i>18 - W 100' of NW 1/4 SE 1/4 - 3 acs</i></p> <p><i>21 - 50' of W 550' of NW 1/4 SE 1/4 - 1.5 acs</i></p> <p><i>at least one building added -</i></p> <p><i>Seoulon - for Hafner \$500</i></p> <p><i>Blg 573 -</i></p>								

INCREASE OR DECREASE in Value of Property Heretofore Assessed, by the Erection or Destruction of Buildings or Structures Thereon

Urban Property Assessed at 40 Per Cent of True and Full Value.
(Homesteads up to \$4,000 True and Full Value 25 Per Cent.)

Rural Property Assessed at 33 1/2 Per Cent of True and Full Value.
(Homesteads up to \$4,000 True and Full Value 20 Per Cent.)

NAMES OF PROPERTY OWNERS	DESCRIPTION	Sec. or Lot	Town or Block	Rng.	True and Full Value of Structures worth more than \$100 each Dollars	KIND OF STRUCTURES	Assessed Value of Additional Structures Dollars	Reduction of Assessed Value on Account of Loss occasioned by Fire, Flood or otherwise Dollars
Empty table body								

Busi's to 142-30
 King's Green Shores
 Rocky Point

Assessment of Tax

NAME OF OWNER

Treasurer's Office, Cass County, Minnesota

RECEIVED this, the first Monday (being the 2nd day) of January, A. D. 1950, of L. C. Peterson, Auditor of said County, Minnesota, the Tax List of all Taxable Real and Personal Property in the Town of Turtle Lake in said County for the year A. D. 1949, as specified above and amounting to Dollars

Paul D. Jewell County Treasurer. By P.M.A.

Jan. 2, 1950

Office of County Treasurer, Cass County, Minnesota

To L. C. Peterson, County Auditor:

Sir:—I herewith return to you the Tax List for the Town of Turtle Lake in said County for the year 1949, heretofore received from you. I certify that I have compared the same with the duplicate receipts in your office, and have written opposite the amount of each tax so received the words "First Quarter Paid", "Second Quarter Paid", "Third Quarter Paid" or "Paid in full" as the case may be, and the number of my receipt given in discharge of said tax, and each tract or lot of real property against which the taxes remain unpaid is delinquent for said year.

Yours respectfully, Paul D. Jewell County Treasurer. By P.M.A.

Auditor's Office, Cass County, Minnesota

I, Auditor of said County, and State of Minnesota, do hereby certify that the following is a correct list of the Taxes levied on the Real and Personal Property in the of for the year 1949.

WITNESS my hand and official seal, the day of 1950.

(SEAL) County Auditor.

Auditor's Office, Cass County, Minnesota

I hereby certify that on the first Monday in January 1951, I received of County Treasurer, the Tax List of the of in said County for the year 1949; that I have compared the said list with the Statements received for by said Treasurer, which are on file in my office, and that each tract or lot of real property therein against which the taxes, or any part thereof, remains unpaid are delinquent for said year.

(SEAL) County Auditor.

Assessment of 1

NAME OF OWNER

FUNDS	MARCH SETTLEMENT 1952	JUNE SETTLEMENT 1952	NOV. SETTLEMENT 1952	Amount Collected from Nov. 1952 to First Monday in Jan. 1953	REDUCTIONS	Total Reductions and Collected	BALANCE UNCOLLECTED	ADDITIONS	Total Uncollected to First Monday in January, 1953
State—Non-Homestead, State—Homestead,	28 11 25 86	47 05 45 53	25 54 36 58	1 07 1 94					
County Revenue, County Road and Bridge, County Welfare, County Bond and Interest	168 00 56 00 213 48 112 00	45 168 150 56 844 14 301 12	237 39 79 13 443 66 158 26	12 63 4 21 23 60 9 42					
Town Revenue, Town Road and Bridge, Town Drag, Town State Loan, FIRE TCL	6 166 94 38 6 24 3 146 2 146	165 78 253 75 16 72 84 58 84 58	87 13 133 36 889 44 45 44 45	4 64 7 18 47 237 237					
School Local 1 Mill, School Special, School State Loan, Deficiency Tuition Transportation C.O. B.S. (UN) ... (S)	6 29 179 64 108 85 15 73 18 88 50 34 9 44	16 92 309 64 272 66 42 30 50 75 135 33 25 38	889 203 35 153 81 22 23 26 67 71 12 13 33	47 10 52 8 18 1 18 1 42 3 79 71					
	1318 37	3342 67	1798 20	95 11					

	SCHOOL DISTRICT NO.	LOCAL 1 MILL	SPECIAL	STATE LOAN	DEF.	C.O.	B.S. (UN)	TRANSP	B.S. (S)	TOTALS
MARCH SETTLEMENT	School District No. 4-5 774-5	61 568	913 17051		1052 9833	183 1705	487 4547	152 1421	91 853	2939 35978
	Totals	629	17964		10885	1888	5034	1573	944	38917
JUNE SETTLEMENT	School District No. 4#5 774#5	1319 373	19784 11480		22817 6447	3957 1118	10552 2981	3298 932	1977 587	63708 23570
	Totals	1692	30964		29266	5075	13533	4230	2538	87298
NOVEMBER SETTLEMENT	School District No. 4#5 774#5	423 466	6346 13989		7314 8067	1268 1349	3382 3730	1057 1166	634 699	20424 27516
	Totals	889	20335		15281	2667	7112	2223	1233	49940
NOVEMBER to JANUARY	School District No. 4#5 774#5	24 23	367 685		423 395	73 69	196 183	61 57	37 34	1181 1446
	Totals	47	1052		818	142	379	118	71	2627
ADDITIONS	School District No.									
	Totals									
REDUCTIONS	School District No.									
	Totals									

Ruh's Po 12-30 King's Green Shores Rocky Point

Assessment Roll and Tax List of Real Property in the Lacrosse of Lacrosse Lake

Form 5013

IN WHOSE NAME ASSESSED	TO WHOM TRANSFERRED	DESCRIPTION OF PROPERTY				TRUE AND FULL VALUATIONS				ASSESSED VALUATIONS						FINAL EQUALIZED VALUE		
		Subdivision	Sec. or Lot	Town or Block	Range	Number of Acres of Land	LAND Exclusive of Structures and Improvements	BUILDINGS and Other Structures	MACHINERY Permanently Attached to Real Estate	TOTAL True and Full Value	RURAL		ALL OTHER		MACHINERY Permanently Attached to Real Estate		TOTAL ASSESSED VALUE	Total Assessed Value as Equalized by the Board of Review
											Acres	10ths	Homestead Up to \$4,000 20%	Over \$4,000 and Non-Homestead 33 1/3%				
						Dollars	Dollars	Dollars	Dollars	Dollars	Dollars	Dollars	Dollars	Dollars	Dollars	Dollars		
		NE 1/4 of NE 1/4			1 1/4 30													
		NW 1/4 of NE 1/4																
		SW 1/4 of NE 1/4																
State of Minnesota		7/8 of SE 1/4 of NE 1/4																
		NE 1/4 of NW 1/4																
		NW 1/4 of NW 1/4																
		SW 1/4 of NW 1/4																
		SE 1/4 of NW 1/4																
		NE 1/4 of SW 1/4																
W S of America		8/8 of NW 1/4 of SW 1/4																
		SW 1/4 of SW 1/4																
		SE 1/4 of SW 1/4																
		NE 1/4 of SE 1/4																
		NW 1/4 of SE 1/4																
Tom Mueser		8/8 of SW 1/4 of SE 1/4			20													
		SE 1/4 of SE 1/4																
					20													

Cass County, Minnesota, for Taxes for the Year 1949.

SOLD FOR TAXES	VALUATIONS BY SCHOOL DISTRICTS AS EQUALIZED BY DEPARTMENT OF TAXATION						Tax Including State Homestead	State Tax on Non-Homestead	SPECIAL TAXES	TOTAL TAXES	PAID	WHEN PAID	Number of Receipt	March Settlement 1950	June Settlement 1950	Penalty	November Settlement 1950	Penalty	Collections to First Monday in January 1951	Penalty	Delinquent on First Monday in January 1951	Total Delinquent Tax and Penalty	REMARKS
	District No.	District No.	District No.	District No.	District No.	District No.																	
	Rate	Rate	Rate	Rate	Rate	Rate																	
	Dollars	Dollars	Dollars	Dollars	Dollars	Dollars	\$ cts.	\$ cts.	\$ cts.	\$ cts.	Month Day Year		\$ cts.	\$ cts.	\$ cts.	\$ cts.	\$ cts.	\$ cts.	\$ cts.	\$ cts.	\$ cts.	\$ cts.	
1																							
2																							
3																							
4																							
5																							
6																							
7																							
8																							
9																							
10																							
11																							
12																							
13																							
14																							
15																							
16																							
17																							
18										33	632 16	648	PAID IN FULL JAN 23 1950 536 648										
19																							
20										4 33	632 16	648											

Bush's pc 142-30 King's Green Shores Rocky Point

Assessment Roll and Tax List of Real Property in the Lac Seul of Lac Seul Lake

IN WHOSE NAME ASSESSED	TO WHOM TRANSFERRED	DESCRIPTION OF PROPERTY			No. School District	Indicate Homestead	Indicate Agricultural	TRUE AND FULL VALUATIONS				ASSESSED VALUATIONS					FINAL EQUALIZED VALUE				
		Subdivision	Sec. or Lot	Town or Block				Rng.	Number of Acres of Land	LAND Exclusive of Structures and Improvements	BUILDINGS and Other Structures	MACHINERY Permanently Attached to Real Estate	TOTAL True and Full Value	RURAL		ALL OTHER		MACHINERY Permanently Attached to Real Estate	TOTAL ASSESSED VALUE	Total Assessed Value as Equalized by the Board of Review	
														Homestead Up to \$4,000 20%	Over \$4,000 and Non-Homestead 33 1/3%	Homestead Up to \$4,000 25%					Over \$4,000 and Non-Homestead 40%
Ella Dahly		NE 1/4 of NE 1/4	10	141	30	40	5	Yes													
Gustave Kulander		N 1/2 of NW 1/4 of NE 1/4				20		No													
U. S. of America		SW 1/4 of NE 1/4																			
Ella Dahly		SE 1/4 of NE 1/4				40		Yes													
U. S. of America		1/2 of NW 1/4 of NE 1/4																			
Gustave Kulander		NE 1/4 of NW 1/4				40		No													
Theodore E. Norgard		NW 1/4 of NW 1/4				40															
"		SW 1/4 of NW 1/4				40															
"		SE 1/4 of NW 1/4																			
Orville N. Harms		NE 1/4 of SW 1/4				40		Yes													
Carl Ostrum		NW 1/4 of SW 1/4				40															
Levit Bakker		SW 1/4 of SW 1/4				40															
"		SE 1/4 of SW 1/4																			
Milo R. + Lina Dahly		NE 1/4 of SE 1/4				40															
U. S. of America		NW 1/4 of SE 1/4																			
Oscar W. Hanson		SW 1/4 of SE 1/4				40															
Milo R. + Lina Dahly		SE 1/4 of SE 1/4				40															

400-

Cass County, Minnesota, for Taxes for the Year 1949.

SOLD FOR TAXES	VALUATIONS BY SCHOOL DISTRICTS AS EQUALIZED BY DEPARTMENT OF TAXATION						Tax including State Homestead	State Tax on Non-Homestead	SPECIAL TAXES	TOTAL TAXES	PAID	WHEN PAID	Number of Receipt	March Settlement 1950	June Settlement 1950	Penalty	November Settlement 1950	Penalty	Collections to First Monday in January 1951	Penalty	Delinquent on First Monday in January 1951	Total Delinquent Tax and Penalty	REMARKS
	District No.	District No.	District No.	District No.	District No.	District No.																	
	Rate	Rate	Rate	Rate	Rate	Rate																	
1	21	69					1322		1322	1	2nd Half Paid OCT 1 1950	1326				661							
2	21	37					708	16	724	2	PAID IN FULL MAY 31 1950	8598				724							
3										3													
4	21	44					842		842	4	2nd Half Paid OCT 1 1950	1326				421							
5										5													
6		73					1398	34	1432	6	PAID IN FULL MAY 31 1950	8598				1432							
7		100					1916	46	1962	7	PAID IN FULL DR# 22716	1-8-51										1962	
8		73					1398	34	1432	8	PAID IN FULL DR# 22716												1432
9										9													
10										10													
11	21	120					2298		2298	11	2nd Half Paid OCT 1 1950	13018				1149							1954
12	21	102					1954		1954	12	1st Half Paid MAY 24 1950	6624											
13	21	123					2356		2356	13	PAID IN FULL MAY 31 1950	8055				2356							
14										14													
15										15													
16	21	189					3620		3620	16	2nd Half Paid NOV 7 1950	13783				1810							
17										17	1st Half Paid MAY 31 1950	7903											
18	21	75					1436		1436	18	PAID IN FULL OCT 14 1950	13004											1436
19	21	44					842		842	19	2nd Half Paid NOV 7 1950	13785				421							421
20	4	766					20090	130	20220	20	1st Half Paid MAY 31 1950	7903				8974							5348
	11	283																					
	1049																						

King's Green Shores Rocky Point

Assessment Roll and Tax List of Real Property in the Lanon of Lurley Lake

Cass County, Minnesota, for Taxes for the Year 1949.

IN WHOSE NAME ASSESSED	TO WHOM TRANSFERRED	DESCRIPTION OF PROPERTY				No. School District	Indicate Homestead Yes or No	Indicate Agricultural Yes or No	TRUE AND FULL VALUATIONS				ASSESSED VALUATIONS					Total Assessed Value as Equalized by the Board of Review	FINAL EQUALIZED VALUE	
		SUBDIVISION	Sec. of Lot	Town or Block	Number of Acres of Land				LAND Exclusive of Structures and Improvements	BUILDINGS and Other Structures	MACHINERY Permanently Attached to Real Estate	TOTAL True and Full Value	RURAL		ALL OTHER		MACHINERY Permanently Attached to Real Estate			TOTAL ASSESSED VALUE
													Homestead Up to \$4,000 20%	Over \$4,000 and Non-Homestead 33 1/3%	Homestead Up to \$4,000 25%	Over \$4,000 and Non-Homestead 40%				
Mrs. Dahl		1/2 of NE 1/4 of NE 1/4	12	41	32	20	5	No												
		NW 1/4 of NE 1/4																		
		SW 1/4 of NE 1/4																		
		SE 1/4 of NE 1/4																		
U. S. of America		1/2 of 1/2 of NE 1/4																		
Peter Bakker		1/2 of NE 1/4 of NW 1/4				20		Yes												
Core Davis		NW 1/4 of NW 1/4				40		No												
Ernest Blackburn		1/2 of SW 1/4 of NW 1/4				20		No												
Myron W. & Grace E. Jones		SE 1/4 of NW 1/4				40		Yes												
		NE 1/4 of SW 1/4																		
		NW 1/4 of SW 1/4																		
Samuel N. & Ingri Peterson		SW 1/4 of SW 1/4				40		No												
		SE 1/4 of SW 1/4				40		No												
		NE 1/4 of SE 1/4																		
Ernest & Elton Gustafson	J. D. K. Utton	NW 1/4 of SE 1/4				40		No												
Martin Rust		SW 1/4 of SE 1/4				40		Yes												
		SE 1/4 of SE 1/4				40		No												

SOLD FOR TAXES	VALUATIONS BY SCHOOL DISTRICTS AS EQUALIZED BY DEPARTMENT OF TAXATION						Tax including State Homestead	State Tax on Non-Homestead	SPECIAL TAXES	TOTAL TAXES	PAID	WHEN PAID	Number of Receipt	March Settlement 1950	June Settlement 1950	Penalty	November Settlement 1950	Penalty	Collections to First Monday in January 1951	Penalty	Delinquent on First Monday in January 1951	Total Delinquent Tax and Penalty	REMARKS
	District No.	District No.	District No.	District No.	District No.	District No.																	
	Rate	Rate	Rate	Rate	Rate	Rate																	
	14.1						4.58																
1	20						384	10	394		2nd Half Paid NOV 1 1950	1378		197		197							
2																							
3																							
4																							
5																							
6	51 42						804		804		2nd Half Paid OCT 30 1950	13404		402		402							
7	21 52						996		996		PAID IN FULL MAY 31 1950	7748		996									
8	32						612	14	626		PAID IN FULL MAY 1 1950	5850		626									
9	21 116						2222		2222		1st Half Paid JUN 8 1950	756				11 11		33		11 11	9222		
10																							
11																							
12																							
13	SOLD FOR TAXES						1474	36	1510													1510	
14	SOLD FOR TAXES						1398	34	1432													1432	
15																							
16																							
17	21 85						3542		3542		PAID IN FULL APR 25 1950	5028		3542									
18	51 65						1244		1244		PAID IN FULL FEB 15 1950	1663		622								622	
19	21 44						842		842		PAID IN FULL FEB 1 1950	1663		421								421	
20	4 706						13518	94	13612				1043	5763		1710						5096	

340 -

Paul's P. 12-30 King's Green Shores Rocky Point

Assessment Roll and Tax List of Real Property in the Town of Turtle Lake

Cass County, Minnesota, for Taxes for the Year 1949.

IN WHOSE NAME ASSESSED	TO WHOM TRANSFERRED	DESCRIPTION OF PROPERTY			No. School District	Indicate Homesteaded Yes or No	Indicate Agricultural Yes or No	TRUE AND FULL VALUATIONS				ASSESSED VALUATIONS						FINAL EQUALIZED VALUE	SOLD FOR TAXES	VALUATIONS BY SCHOOL DISTRICTS AS EQUALIZED BY DEPARTMENT OF TAXATION						PAID	WHEN PAID	Number of Receipt	March Settlement 1950	June Settlement 1950	Penalty	November Settlement 1950	Penalty	Collections to First Monday in January 1951	Penalty	Delinquent on First Monday in January 1951	Total Delinquent Tax and Penalty	REMARKS																						
		SUBDIVISION	Sec. or Lot	Town or Block				Rng	Number of Acres of Land	LAND Exclusive of Structures and Improvements	BUILDINGS and Other Structures	MACHINERY Permanently Attached to Real Estate	TOTAL True and Full Value	RURAL		ALL OTHER				MACHINERY Permanently Attached to Real Estate	TOTAL ASSESSED VALUE	Total Assessed Value as Equalized by the Board of Review	District No. Rate	District No. Rate	District No. Rate														District No. Rate	District No. Rate	District No. Rate	Tax including State Homestead	State Tax on Non-Homestead	SPECIAL TAXES	TOTAL TAXES	Month	Day	Year	\$	cts.	\$	cts.	\$	cts.	\$	cts.	\$	cts.	\$	cts.
U. S. of America		NE 1/4 of NE 1/4	26	141	30																																																							
U. S. of America		NW 1/4 of NE 1/4																																																										
U. S. of America		SW 1/4 of NE 1/4																																																										
U. S. of America		SE 1/4 of NE 1/4 Lot 1																																																										
U. S. of America		NE 1/4 of NW 1/4																																																										
U. S. of America		NW 1/4 of NW 1/4 Lot 3																																																										
U. S. of America		SW 1/4 of NW 1/4 Lot 4																																																										
U. S. of America		SE 1/4 of NW 1/4																																																										
State of Minnesota		NE 1/4 of SW 1/4	} Lot 5																																																									
		NW 1/4 of SW 1/4																																																										
U. S. of America		NW 1/4 of SW 1/4 Lot 6																																																										
U. S. of America		SE 1/4 of SW 1/4																																																										
U. S. of America		NE 1/4 of SE 1/4 Lot 2																																																										
U. S. of America		NW 1/4 of SE 1/4																																																										
U. S. of America		SW 1/4 of SE 1/4																																																										
U. S. of America		SE 1/4 of SE 1/4																																																										

Bush's 1-12-50

Krug's Green Shores

Rocky Point

Assessment Roll and Tax List of Real Property in the Landon of Lurde Lake

Form 5011

IN WHOSE NAME ASSESSED	TO WHOM TRANSFERRED	DESCRIPTION OF PROPERTY				No. School District	Indicate Homestead or No	Indicate Agricultural Tax or No	TRUE AND FULL VALUATIONS			ASSESSED VALUATIONS					FINAL EQUALIZED VALUE
		SUBDIVISION	Sec. or Lot	Town or Block	Range				Number of Acres of Land	LAND Exclusive of Structures and Improvements	BUILDINGS and Other Structures	MACHINERY Permanently Attached to Real Estate	TOTAL True and Full Value	RURAL		ALL OTHER	
					Acres	100ths	Dollars	Dollars	Dollars	Dollars	Dollars	Dollars	Dollars	Dollars	Dollars	Dollars	Dollars
State of Minnesota		NE 1/4 of NE 1/4	28	141	30												
State of Minnesota		NW 1/4 of NE 1/4															
U. S. of America		SW 1/4 of NE 1/4															
U. S. of America		SE 1/4 of NE 1/4															
U. S. of America		NE 1/4 of NW 1/4															
U. S. of America		NW 1/4 of NW 1/4															
U. S. of America		SW 1/4 of NW 1/4															
U. S. of America		SE 1/4 of NW 1/4															
U. S. of America		NE 1/4 of SW 1/4															
U. S. of America		NW 1/4 of SW 1/4															
U. S. of America		SW 1/4 of SW 1/4															
U. S. of America		SE 1/4 of SW 1/4															
U. S. of America		NE 1/4 of SE 1/4															
U. S. of America		NW 1/4 of SE 1/4															
U. S. of America		SW 1/4 of SE 1/4															
U. S. of America		SE 1/4 of SE 1/4															

Cass County, Minnesota, for Taxes for the Year 1949.

SOLD FOR TAXES	VALUATIONS BY SCHOOL DISTRICTS AS EQUALIZED BY DEPARTMENT OF TAXATION						Tax including State Homestead	State Tax on Non-Homestead	SPECIAL TAXES	TOTAL TAXES	PAID	WHEN PAID	Number of Receipt	March Settlement 1950	June Settlement 1950	Penalty	November Settlement 1950	Penalty	Collections to First Monday in January 1951	Penalty	Delinquent on First Monday in January 1951	Total Delinquent Tax and Penalty	REMARKS
	District No. Rate	District No. Rate	District No. Rate	District No. Rate	District No. Rate	District No. Rate																	

Dash's P. 142-30 King's Green Shores Rocky Point

Assessment Roll and Tax List of Real Property in the Town of Turtle Lake

IN WHOSE NAME ASSESSED	TO WHOM TRANSFERRED	DESCRIPTION OF PROPERTY				TRUE AND FULL VALUATIONS				ASSESSED VALUATIONS					FINAL EQUALIZED VALUE	REMARKS		
		SURDIVISION	Sec of Lot	Town or Block	Number of Acres of Land	LAND Exclusive of Structures and Improvements	BUILDINGS and Other Structures	MACHINERY Permanently Attached to Real Estate	TOTAL True and Full Value	RURAL		ALL OTHER		MACHINERY Permanently Attached to Real Estate			TOTAL ASSESSED VALUE	Total Assessed Value as Equalized by the Board of Review
										Acres	100ths	Homestead Up to \$4,000 20%	Over \$4,000 and Non-Homestead 33 1/3%					
U. S. of America		NE 1/4 of NE 1/4		29 141 30														
U. S. of America		NW 1/4 of NE 1/4																
U. S. of America		SW 1/4 of NE 1/4																
U. S. of America		SE 1/4 of NE 1/4																
U. S. of America		NE 1/4 of NW 1/4																
U. S. of America		NW 1/4 of NW 1/4																
U. S. of America		SW 1/4 of NW 1/4																
U. S. of America		SE 1/4 of NW 1/4																
U. S. of America		NE 1/4 of SW 1/4																
U. S. of America		NW 1/4 of SW 1/4																
U. S. of America		SW 1/4 of SW 1/4																
U. S. of America		SE 1/4 of SW 1/4																
U. S. of America		NE 1/4 of SE 1/4																
U. S. of America		NW 1/4 of SE 1/4																
U. S. of America		SW 1/4 of SE 1/4																
U. S. of America		SE 1/4 of SE 1/4																

SOLD FOR TAXES	VALUATIONS BY SCHOOL DISTRICTS AS EQUALIZED BY DEPARTMENT OF TAXATION						Tax Including State Homestead	State Tax on Non-Homestead	SPECIAL TAXES	TOTAL TAXES	PAID	WHEN PAID	Number of Receipt	March Settlement 1950	June Settlement 1950	Penalty	November Settlement 1950	Penalty	Collections to First Monday in January 1951	Penalty	Delinquent on First Monday in January 1951	Total Delinquent Tax and Penalty															
	District No.	District No.	District No.	District No.	District No.	District No.																	Rate	Rate	Rate	Rate	Rate	Rate	Rate	Rate	Rate	Rate	Rate	Rate	Rate	Rate	Rate
	Mills	Mills	Mills	Mills	Mills	Mills																	\$ cts.	\$ cts.	\$ cts.	\$ cts.	\$ cts.	\$ cts.	\$ cts.	\$ cts.	\$ cts.	\$ cts.	\$ cts.	\$ cts.	\$ cts.	\$ cts.	\$ cts.
1																																					
2																																					
3																																					
4																																					
5																																					
6																																					
7																																					
8																																					
9																																					
10																																					
11																																					
12																																					
13																																					
14																																					
15																																					
16																																					
17																																					
18																																					
19																																					
20																																					

Bush's P 142-50 King's Green Shores Rocky Point

Assessment Roll and Tax List of Real Property in the Town of Turtle Lake

IN WHOSE NAME ASSESSED	TO WHOM TRANSFERRED	DESCRIPTION OF PROPERTY				No. School District	Indicate Homestead Yes or No	Indicate Agricultural Use Yes or No	TRUE AND FULL VALUATIONS				ASSESSED VALUATIONS					Total Assessed Value as Equalized by the Board of Review	FINAL EQUALIZED VALUE		
		SUBDIVISION	Sec. of Lot	Town or Block	Rng.				Number of Acres of Land	LAND Exclusive of Structures and Improvements	BUILDINGS and Other Structures	MACHINERY Permanently Attached to Real Estate	TOTAL True and Full Value	RURAL		ALL OTHER				MACHINERY Permanently Attached to Real Estate	TOTAL ASSESSED VALUE
														Homestead Up to \$4,000 20%	Over \$4,000 and Non-Homestead 33 1/3%	Homestead Up to \$4,000 25%	Over \$4,000 and Non-Homestead 40%				
Geo. Thomas		NE 1/4 of NE 1/4	30	141	30	41.18	5	Yes													
Albert Thomas		NW 1/4 of NE 1/4				40.84	9	No													
"		SW 1/4 of NE 1/4				41.23	9	No													
Chas. + Laura M. Kenney		SE 1/4 of NE 1/4				41.58	9	Yes													
Geo. Thomas		NE 1/4 of NW 1/4				41.32	9	No													
Louise Grove		NW 1/4 of NW 1/4 Lot 1				43.98															
"		SW 1/4 of NW 1/4 Lot 2				44.31															
Ul S. of America		SE 1/4 of NW 1/4																			
Albert Thomas		NE 1/4 of SW 1/4				42.42															
State of Minnesota		NW 1/4 of SW 1/4 Lot 3 less 1/2 Acre																			
State of Minnesota		SW 1/4 of SW 1/4 Lot 4 less 1/2 Acre																			
Albert Thomas		SE 1/4 of SW 1/4				38.27															
Chas. + Laura M. Kenney		NE 1/4 of SE 1/4				41.65	9	Yes													
Albert Thomas		NW 1/4 of SE 1/4				41.82	9	No													
Hattie Thomas		SW 1/4 of SE 1/4				41.61															
Chas. + Laura M. Kenney		SE 1/4 of SE 1/4				39.83	9	Yes													
						540.04															

Cass County, Minnesota, for Taxes for the Year 1949.

SOLD FOR TAXES	VALUATIONS BY SCHOOL DISTRICTS AS EQUALIZED BY DEPARTMENT OF TAXATION						Tax Including State Homestead	State Tax on Non-Homestead	SPECIAL TAXES	TOTAL TAXES	PAID	WHEN PAID	Number of Receipt	March Settlement 1950	June Settlement 1950	Penalty	November Settlement 1950	Penalty	Collections to First Monday in January 1951	Penalty	Delinquent on First Monday in January 1951	Total Delinquent Tax and Penalty	REMARKS	
	District No. 5	District No. 5	District No. 5	District No. 5	District No. 5	District No. 5																		
	Rate	Rate	Rate	Rate	Rate	Rate																		
1	54						1034			1034		2nd Half Paid SEP 1 0 1950	12235											
2	85						1628	38 1/2		1666		1st Half Paid JUN 1 0 1950	9040											
3	75						1436	34 1/2		1470		2nd Half Paid OCT 3 1 1950	1382											
4	48						920			920		1st Half Paid MAY 31 1950	8587											
5												PAID IN FULL MAY 2 0 1950	7823											
6	76						1456	34		1490		2nd Half Paid SEP 1 0 1950	12235											
7	80						1532	36 1/2		1568		1st Half Paid JUL 1 0 1950	9040											
8	81						1552	38 1/2		1590		2nd Half Paid OCT 3 1 1950	14044											
9												1st Half Paid MAY 3 1 1950	10483											
10																								
11	77						1474	36 1/2		1510		2nd Half Paid OCT 3 1 1950	13192											
12												1st Half Paid MAY 3 1 1950	8587											
13																								
14	70						1340	32 1/2		1372		2nd Half Paid OCT 3 1 1950	13192											
15												1st Half Paid MAY 3 1 1950	8587											
16	93						1782			1782		PAID IN FULL MAY 2 0 1950	7823											
17	77						1474	36 1/2		1510		2nd Half Paid OCT 3 1 1950	13192											
18	76						1456	34 1/2		1490		1st Half Paid MAY 3 1 1950	8587											
19	42						804			804		PAID IN FULL MAY 2 0 1950	7823											
20	237						17888	318		18206														

King's Green Stores Rocky Point

Assessment Roll and Tax List of Real Property in the Second of Quartz Lake

Form SCD

IN WHOSE NAME ASSESSED	TO WHOM TRANSFERRED	DESCRIPTION OF PROPERTY				No. School District	Indicate Homestead Yes or No	Indicate Agricultural Yes or No	TRUE AND FULL VALUATIONS				ASSESSED VALUATIONS					Total Assessed Value as Equalized by the Board of Review	FINAL EQUALIZED VALUE		
		Subdivision	Sec. or Lot	Town or Block	Rug.				Number of Acres of Land	LAND Exclusive of Structures and Improvements	BUILDINGS and Other Structures	MACHINERY Permanently Attached to Real Estate	TOTAL True and Full Value	RURAL		ALL OTHER				MACHINERY Permanently Attached to Real Estate	TOTAL ASSESSED VALUE
														Homestead Up to \$4,000 20%	Over \$4,000 and Non-Homestead 33 1/3%	Homestead Up to \$1,000 25%	Over \$1,000 and Non-Homestead 40%				
Edith H. Jenson		1/4 ac. of Lot 2	31	141	36	17	5	26													
Ludis Wickham & Mabel E. Hall		5 ac. of Lot 2				5															
Edmund J. Grundy		1/4 ac. of Lot 2				16															
Raymond L. Gladys & Jolley		1 ac. of Lot 2				1															
D. D. Hecker		1/4 ac. of Lot 2				140															
George Thomas		1/4 ac. of SE 1/4 of NW 1/4				8															
Tom P. & Florence Hall		1 3/4 ac. of SE 1/4 of NW 1/4				175															
		NE 1/4 of SW 1/4																			
		NW 1/4 of SW 1/4																			
		SW 1/4 of SW 1/4																			
		SE 1/4 of SW 1/4																			
		all that portion of Lot 4 lying 1/4 of Ry																			
Ben L. & Edna Mae Smith		NE 1/4 of SE 1/4																			
		NW 1/4 of SE 1/4																			
		SW 1/4 of SE 1/4																			
		SE 1/4 of SE 1/4																			

1748

Cass County, Minnesota, for Taxes for the Year 1949.

SOLD FOR TAXES	VALUATIONS BY SCHOOL DISTRICTS AS EQUALIZED BY DEPARTMENT OF TAXATION						Tax Including State Homestead	State Tax on Non-Homestead	SPECIAL TAXES	TOTAL TAXES	PAID	WHEN PAID	Number of Receipt	March Settlement 1950	June Settlement 1950	Penalty	November Settlement 1950	Penalty	Collections to First Monday in January 1951	Penalty	Delinquent on First Monday in January 1951	Total Delinquent Tax and Penalty	REMARKS
	District No.	District No.	District No.	District No.	District No.	District No.																	
	Rate	Rate	Rate	Rate	Rate	Rate																	
1	3						58	-	.58	1 PAID IN FULL	MAY 31 1950	8017											
2	5						96	.02	.98	2 PAID IN FULL	MAY 31 1950	5588											
3	3						58	-	.58	3 PAID IN FULL	MAY 11 1950	1553											
4																							
5	77						1474	.36	15.10	5 PAID IN FULL	MAY 11 1950	1559											
6	23						440	.10	4.50	6 PAID IN FULL	FEB 1 1950	945	450										
7																							
8																							
9	16						306	.08	3.14	2nd Half Paid	SEP 1 1950	1223											
10	7						134	.04	1.38	1st Half Paid	JUN 1 1950	9040											
11																							
12																							
13																							
14																							
15	160						3064	.74	3.13	15 PAID IN FULL	MAY 31 1950	8462											
16																							
17																							
18																							
19																							
20	4						30	.134	5764					450	5000								

Dust's 1 142-30

King's Green Shores Rocky Point

Assessment Roll and Tax List of Real Property in the Town of Turtle Lake

IN WHOSE NAME ASSESSED	TO WHOM TRANSFERRED	DESCRIPTION OF PROPERTY				TRUE AND FULL VALUATIONS				ASSESSED VALUATIONS					FINAL EQUALIZED VALUE		
		Subdivision	Sec. or Lot	Town or Block	No. of Acres of Land	LAND Exclusive of Structures and Improvements	BUILDINGS and Other Structures	MACHINERY Permanently Attached to Real Estate	TOTAL True and Full Value	RURAL		ALL OTHER		MACHINERY Permanently Attached to Real Estate		TOTAL ASSESSED VALUE	Total Assessed Value as Equalized by the Board of Review
										Homestead Up to \$4,000 20%	Over \$4,000 and Non-Homestead 33 1/3%	Homestead Up to \$4,000 25%	Over \$4,000 and Non-Homestead 40%				
Edith W. Jensen		NE 1/4 of NE 1/4	31	141	36	17											
Lidia Mochaus & Mabel S. Wall		5 acres of Lot 2 less strip 20' wide for road				5											
Edmund J. Grundy		1/2 ac. of Lot 2				16											
Raymond S. & Gladys E. Jolley		1 ac. of Lot 2				1											
D. N. Hecker		1.4 ac. of NW 1/4				140											
George Thomas		Sec. of SE 1/4 of NW 1/4 E. of Ry.				8											
Tom P. & Florence Wall		1 3/4 ac. of SE 1/4 of NW 1/4				175											
		NE 1/4 of SW 1/4															
		NW 1/4 of SW 1/4															
		SW 1/4 of SW 1/4															
		SE 1/4 of SW 1/4															
		all that portion of Lot 4 lying E. of Ry.															
		NE 1/4 of SE 1/4															
		NW 1/4 of SE 1/4															
		SW 1/4 of SE 1/4															
		SE 1/4 of SE 1/4															

1748

Cass County, Minnesota, for Taxes for the Year 1949.

SOLD FOR TAXES	VALUATIONS BY SCHOOL DISTRICTS AS EQUALIZED BY DEPARTMENT OF TAXATION						Tax Including State Homestead	State Tax on Non-Homestead	SPECIAL TAXES	TOTAL TAXES	PAID	WHEN PAID	Number of Receipt	March Settlement 1950	June Settlement 1950	Penalty	November Settlement 1950	Penalty	Collections to First Monday in January 1951	Penalty	Delinquent on First Monday in January 1951	Total Delinquent Tax and Penalty	REMARKS		
	District No.	District No.	District No.	District No.	District No.	District No.																			
	Rate	Rate	Rate	Rate	Rate	Rate																			
1	3						.58		.58		PAID IN FULL	MAY 31 1950	8019												
2	5						46	.02	.98		PAID IN FULL	MAY 31 1950	5588												
3	3						58		.58		PAID IN FULL	MAY 11 1950	7535												
4																									
5	77						1474	.36	15.10		PAID IN FULL	MAY 11 1950	7559												
6	23						440	.10	4.50		PAID IN FULL	FEB 1 1950	945	450											
7																									
8																									
9	16						3.06	.08	3.14		2nd Half Paid	SEP 1 1950	1223												
10	7						134	.04	1.38		1st Half Paid	JUN 1 1950	9040												
11																									
12																									
13																									
14																									
15	160						3064	.74	3138		PAID IN FULL	MAY 31 1950	8462												
16																									
17																									
18																									
19																									
20																									

4 294

30 134

5764

450 50.00

314

King's Green Stores Rocky Point

Assessment Roll a

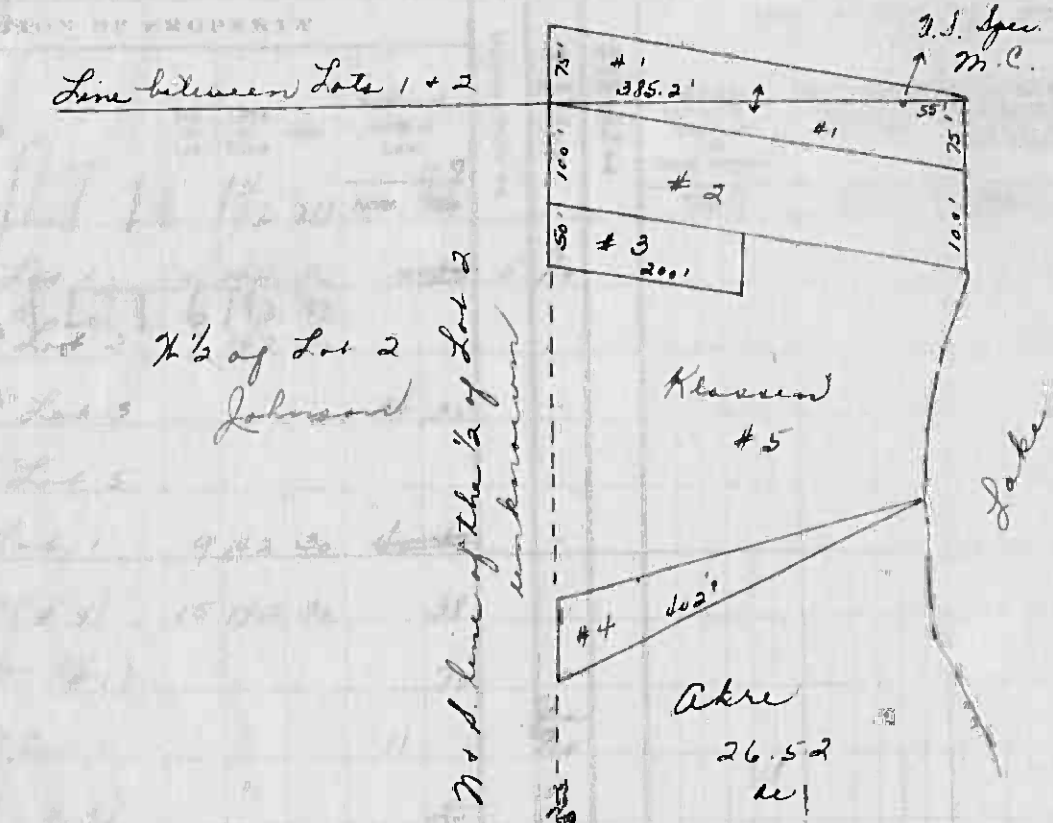
Cass County, Minnesota, for Taxes for the Year 1949.

Form 5C13 MINN. STATE BOARD OF TAXATION

IN WHOSE NAME ASSESSED TO WHOM TRANSFERRED

C. J. DeKoster
 Lydia V. Kallander
 U. S. of America
 Roland A. & Christine S. Sawyer
 U. S. of America
 Lydia V. Kallander
 Philip S. & Mae C. Akre
 Claude Pullen
 Philip S. & Mae C. Akre
 Selby Black
 John B. & Faffie M. Thompson
 Lillian H. & Antoine Johnson
 Philip S. & Mae C. Akre
 P. P. Klassen
 Carl R. Johnson
 Sigvard J. Hovelson
 Carl S. Draper & James Kelsey
 Leonard Peterson

9537 by
 D.W. Buckley 2.
 1/2 of Lot 2
 Johnson
 Part of
 70 ac. of
 about 1
 Part of
 10 Part of
 Ben Prince
 1/2 of
 Part of
 Part of
 1/2 of
 16
 17
 18
 19
 20



ASSESSED VALUATIONS

ALL OTHER	MACHINERY	TOTAL ASSESSED VALUE
Homestead Up to \$4,000 25%	Permanently Attached to Real Estate 33 1/3%	
Over \$4,000 and Non-Homestead 40%		

Total Assessed Value as Equalized by the Board of Review

FINAL EQUALIZED VALUE

SOLD FOR TAXES	VALIDATIONS BY SCHOOL DISTRICTS AS EQUALIZED BY DEPARTMENT OF TAXATION						Tax including State Homestead Mills	State Tax on Non-Homestead Mills	SPECIAL TAXES	TOTAL TAXES	PAID	WHEN PAID	Number of Receipt	March Settlement 1950	June Settlement 1950	Penalty	November Settlement 1950	Penalty	Collections to First Monday in January 1951	Penalty	Delinquent on First Monday in January 1951	Total Delinquent Tax and Penalty	REMARKS
	District No. 191	District No. 2	District No. 3	District No. 4	District No. 5	District No. 6																	
1																							
2																							
3																							
4																							
5																							
6																							
7																							
8																							
9																							
10																							
11																							
12																							
13																							
14																							
15																							
16																							
17																							
18																							
19																							
20																							

142-30

Bush's Point King's Green Shores Rocky Point

Assessment Roll and Tax List of Real Property in the

Town of Swift Lake

of *Swift Lake*

Cass County, Minnesota, for Taxes for the Year 1949.

DESCRIPTION OF PROPERTY

TRUE AND FULL VALUATIONS
ASSESSED VALUATIONS

FINAL EQUALIZED VALUE

VALUATIONS BY SCHOOL DISTRICTS AS EQUALIZED BY DEPARTMENT OF TAXATION
SOLD FOR TAXES
PAID WHEN PAID

IN WHOSE NAME ASSESSED TO WHOM TRANSFERRED

SUBDIVISION
Sec of Lot
Town or Block
Range
Number of Acres of Land

LAND BUILDINGS and Other Structures MACHINERY Permanently Attached to Real Estate
TOTAL True and Full Value
RURAL Over \$4,000 and Non-Homestead 20% Over \$4,000 and Non-Homestead 33 1/4%
ALL OTHER Homestead Up to \$4,000 25% Over \$4,000 and Non-Homestead 40%
MACHINERY Permanently Attached to Real Estate 33 1/4%
TOTAL ASSESSED VALUE
Total Assessed Value as equalized by the board of Review
Dollars

Dollars

District No. District No. District No. District No. District No. District No. District No.
Rate Rate Rate Rate Rate Rate Rate Rate
Dollars Dollars Dollars Dollars Dollars Dollars Dollars Dollars
Special Taxes Total Taxes
PAID WHEN PAID
Number of Receipts
March Settlement 1950
June Settlement 1950
November Settlement 1950
Delinquent on First Monday in January 1951
Total Delinquent Tax and Penalty
REMARKS

C. J. Dakoster
Lepia V. Kallander
U. S. of America
Roland A. & Christine D. Sawyer
U. S. of America
Lepia V. Kallander
Philip J. & Mae C. Akre
Claude Patten
Philip J. & Mae C. Akre
Selby Black
John B. & Effie M. Thompson
Lillian W. & Astoria Johnson Ben Prince
Philip J. & Mae C. Akre
A. L. Klassen
Earl R. Johnson
Sigvard B. Novelson
Earl S. Draper & James Kelsey
Leonard Peterson

7537 1/2 13035 1/2 Lot 16 1/2 30
SW 1/4 of NW 1/4 Lot 1 4 1/2 30
SW 1/4 of NW 1/4 Lot 2 6 1/2 30
SW 1/4 of NW 1/4 Lot 3 3 1/2 30
SE 1/4 of NW 1/4 Lot 5
Lot 1 9 1/2 30
Part of Lot 2 (N 1/2) 15 1/2 30
W 1/2 of Lot 2 (N 1/2) 70
E 1/2 of NW 1/4 of Lot 1
Part of Lot 2 (N 1/2) 35
Part of Lot 2 (N 1/2) 20
Part of Lot 2 (N 1/2) 26 52
Part of Lot 2 (N 1/2) 2 21
W 1/2 of SW 1/4 of NW 1/4 16 1/2 30
W 1/2 of SW 1/4 of NW 1/4 20
NE 1/4 of SE 1/4 of SW 1/4 20
N 1/2 of SW 1/4 40
SW 1/4 of SE 1/4

Table with columns for LAND, BUILDINGS, MACHINERY, TOTAL, RURAL, ALL OTHER, MACHINERY, TOTAL ASSESSED VALUE, and FINAL EQUALIZED VALUE.

Table with columns for VALUATIONS BY SCHOOL DISTRICTS AS EQUALIZED BY DEPARTMENT OF TAXATION, SOLD FOR TAXES, PAID WHEN PAID, and other tax-related metrics.

724 796
2884
1482
5040

13221

4 169 40 2646 786 46088
78 1213 504 18834
1382 912

Assessment Roll and Tax List of Real Property in the Lawn of Little Lake

Cass County, Minnesota, for Taxes for the Year 1949.

FORM SCD IN WHOSE NAME ASSESSED	TO WHOM TRANSFERRED	DESCRIPTION OF PROPERTY				TRUE AND FULL VALUATIONS					ASSESSED VALUATIONS							FINAL EQUALIZED VALUE	SOLD FOR TAXES	VALUATIONS BY SCHOOL DISTRICTS AS EQUALIZED BY DEPARTMENT OF TAXATION												PAID	WHEN PAID Month Day Year	Number of Receipts	March Settlement 1950	June Settlement 1950	Penalty	November Settlement 1950	Penalty	Collections to First Monday in January 1951	Penalty	Delinquent on First Monday in January 1951	Total Delinquent Tax and Penalty	REMARKS																
		SUBDIVISION	Sec. or Lot	Town or Block	RD.	Number of Acres of Land Acres 100ths	LAND Exclusive of Structures and Improvements	BUILDINGS and Other Structures	MACHINERY Permanently Attached to Real Estate	TOTAL True and Full Value	RURAL		ALL OTHER			MACHINERY Permanently Attached to Real Estate 33 1/3%	TOTAL ASSESSED VALUE			Total Assessed Value as Equalized by the Board of Review	District No.	District No.	District No.	District No.	District No.	District No.	Tax including State Homestead	State Tax on Non-Homestead	SPECIAL TAXES	TOTAL TAXES																														
											Rate Mills	Rate Mills	Homestead Up to \$4,000 20%	Over \$4,000 and Non-Homestead 33 1/3%	Homestead Up to \$4,000 25%						Over \$4,000 and Non-Homestead 40%	Rate Mills	Rate Mills	Rate Mills	Rate Mills	Rate Mills					Rate Mills														Rate Mills	Rate Mills	Rate Mills	Rate Mills	Rate Mills	Rate Mills	Rate Mills									
						Dollars	Dollars	Dollars	Dollars	Dollars	Dollars	Dollars	Dollars	Dollars	Dollars	Dollars																																												
U. S. of America		NE 1/4 of NE 1/4	21	142	30																																																							
		NW 1/4 of NE 1/4																																																										
		SW 1/4 of NE 1/4																																																										
		SE 1/4 of NE 1/4																																																										
U. S. of America		<i>Start</i> NE 1/4 of NW 1/4																																																										
		NW 1/4 of NW 1/4																																																										
		SW 1/4 of NW 1/4																																																										
U. S. of America		<i>1/2 of</i> SE 1/4 of NW 1/4																																																										
		NE 1/4 of SW 1/4																																																										
		NW 1/4 of SW 1/4																																																										
		SW 1/4 of SW 1/4																																																										
		SE 1/4 of SW 1/4																																																										
		NE 1/4 of SE 1/4																																																										
		NW 1/4 of SE 1/4																																																										
		SW 1/4 of SE 1/4																																																										
		SE 1/4 of SE 1/4																																																										

Push's Point
King's Green Shores
Rocky Point

Assessment Roll and Tax List of Real Property in the Leland of Shuttle Lake

142-30

IN WHOSE NAME ASSESSED	TO WHOM TRANSFERRED	SUBDIVISION	Sec. or Lot	Town or Block	No. of Acres	No. Section District	Indicate Homestead Yes or No	Indicate Agricultural Use Yes or No	TRUE AND FULL VALUATIONS				ASSESSED VALUATIONS						Total Assessed Value as Equalized by the Board of Review	FINAL EQUALIZED VALUE	SOLD FOR TAXES	District No.	VALUATIONS BY SCHOOL DISTRICTS AS EQUALIZED BY DEPARTMENT OF TAXATION						Tax including State Homestead	State Tax on Non-Homestead	SPECIAL TAXES	TOTAL TAXES	PAID	WHEN PAID	Number of Receipt	March Settlement 1950	June Settlement 1950	Penalty	November Settlement 1950	Penalty	Collections to First Monday in January 1951	Penalty	Delinquent on First Monday in January 1951	Total Delinquent Tax and Penalty	REMARKS																		
									LAND Exclusive of Structures and Improvements	BUILDINGS and Other Structures	MACHINERY Permanently Attached to Real Estate	TOTAL True and Full Value	RURAL		ALL OTHER		MACHINERY Permanently Attached to Real Estate	TOTAL ASSESSED VALUE					Dollars	Dollars	Dollars	Dollars	Dollars	Dollars																		Dollars	Dollars	Dollars	Dollars	Dollars	Dollars	Dollars	Dollars	Dollars	Dollars	Dollars	Dollars	Dollars	Dollars	Dollars	Dollars	Dollars	Dollars
													Homestead Up to \$4,000 20%	Over \$4,000 and Non-Homestead 33 1/3%	Homestead Up to \$4,000 25%	Over \$4,000 and Non-Homestead 40%																																															

Bush's Point King's Green Shores Rocky Point

Assessment Roll and Tax List of Real Property in the Town of Duxie Lake

IN WHOSE NAME ASSESSED	TO WHOM TRANSFERRED	SUBDIVISION	Number of Acres of Land		No. School District	Indicate Homestead or No	Indicate Agricultural or No	TRUE AND FULL VALUATIONS				ASSESSED VALUATIONS					Total Assessed Value as Equalized by the Board of Review	FINAL EQUALIZED VALUE
			Sec. or Lot	Town or Block				Acres	100ths	LAND Exclusive of Structures and Improvements	BUILDINGS and Other Structures	MACHINERY Permanently Attached to Real Estate	TOTAL True and Full Value	RURAL Homestead Up to \$4,000 20%	RURAL Over \$4,000 and Non-Homestead 33 1/3%	ALL OTHER Homestead Up to \$4,000 25%		
		NE 1/4 of NE 1/4			28	142	30											
State of Minnesota		1/2 of NW 1/4 of NE 1/4																
State of Minnesota		1/2 of SW 1/4 of NE 1/4																
U. S. of America		SE 1/4 of NE 1/4																
U. S. of America		3/8 of NW 1/4 of NE 1/4																
State of Minnesota		NE 1/4 of NW 1/4																
State of Minnesota		1/2 of NW 1/4 of NW 1/4																
		SW 1/4 of NW 1/4																
	Wilson Henry & Helen Baldwin	1/2 of SE 1/4 of NW 1/4			20		Yes											
		NE 1/4 of SW 1/4																
		NW 1/4 of SW 1/4																
U. S. of America		SW 1/4 of SW 1/4																
U. S. of America		SE 1/4 of SW 1/4																
State of Minnesota		1/2 of NW 1/4 of SE 1/4																
U. S. of America		NE 1/4 of SE 1/4																
U. S. of America		1/2 of NW 1/4 of SE 1/4																
U. S. of America		NW 1/4 of SE 1/4																
U. S. of America		SW 1/4 of SE 1/4																
U. S. of America		SE 1/4 of SE 1/4																

SOLD FOR TAXES	VALUATIONS BY SCHOOL DISTRICTS AS EQUALIZED BY DEPARTMENT OF TAXATION						Tax including State Homestead Mills	State Tax on Non-Homestead Mills	SPECIAL TAXES	TOTAL TAXES	PAID	WHEN PAID	Number of Receipt	March Settlement 1950	June Settlement 1950	Penalty	November Settlement 1950	Penalty	Collections to First Monday in January 1951	Penalty	Delinquent on First Monday in January 1951	Total Delinquent Tax and Penalty	REMARKS	
	District No.	District No.	District No.	District No.	District No.	District No.																		
	Rate	Rate	Rate	Rate	Rate	Rate																		

PAID IN FULL MAY 12 1949 6.25

11.50

11.50

11.50

11.50

4 60

King's Point Green Shores Rocky Point

Assessment Roll and Tax List of Real Property in the Larson of Lurline Lake

IN WHOSE NAME ASSESSED	TO WHOM TRANSFERRED	DESCRIPTION OF PROPERTY				No. School District	Indicate Homestead Yes or No	Indicate Agricultural Yes or No	TRUE AND FULL VALUATIONS				ASSESSED VALUATIONS					Total Assessed Value as Equalized by the Board of Review	FINAL EQUALIZED VALUE		
		SUBDIVISION	Sec or Lot	Town or Block	Rtg.				Number of Acres of Land	LAND Exclusive of Structures and Improvements	BUILDINGS and Other Structures	MACHINERY Permanently Attached to Real Estate	TOTAL True and Full Value	RURAL		ALL OTHER				MACHINERY Permanently Attached to Real Estate	TOTAL ASSESSED VALUE
														Homestead Up to \$4,000 20%	Over \$4,000 and Non-Homestead 33 1/3%	Homestead Up to \$1,000 25%	Over \$4,000 and Non-Homestead 40%				
Clarence E. Byersdorfer		NE 1/4 of NE 1/4	29	142	30	40	5	Yes													
Amelia + John A. Arala		NW 1/4 of NE 1/4				40															
Sigvard B. Novelson		SW 1/4 of NE 1/4				40															
Clarence Byersdorfer		SE 1/4 of NE 1/4				40															
Emilie E. Larson		1/2 of NE 1/4 of NW 1/4				20		No													
H. V. + Agnes R. Brooks		1/2 of NW 1/4 of NW 1/4				20		No													
Clara Byersdorfer		SW 1/4 of NW 1/4				40		Yes													
		SE 1/4 of NW 1/4				40															
		NE 1/4 of SW 1/4				40															
		NW 1/4 of SW 1/4				40															
U. S. of America		SW 1/4 of SW 1/4																			
U. S. of America		SE 1/4 of SW 1/4																			
		NE 1/4 of SE 1/4				40															
Thaddeus O. Hopens		NW 1/4 of SE 1/4				40															
		SW 1/4 of SE 1/4				40															
		SE 1/4 of SE 1/4				40															
						500															

Cass County, Minnesota, for Taxes for the Year 1949.

SOLD FOR TAXES	VALUATIONS BY SCHOOL DISTRICTS AS EQUALIZED BY DEPARTMENT OF TAXATION						Tax including State Homestead	State Tax on Non-Homestead	SPECIAL TAXES	TOTAL TAXES	PAID	WHEN PAID	Number of Receipt	March Settlement 1950	June Settlement 1950	Penalty	November Settlement 1950	Penalty	Collections to First Monday in January 1951	Penalty	Delinquent on First Monday in January 1951	Total Delinquent Tax and Penalty	REMARKS
	District No. 5	District No. 5	District No. 5	District No. 5	District No. 5	District No. 5																	
	Rate 1.191 Mills	Rate 2.205 Mills	Rate 5.191 Mills	Rate 5.191 Mills	Rate 5.191 Mills	Rate 5.191 Mills																	
1	21 91						17.42		17.42	1 PAID IN FULL	MAY 29 1950	7807		1742									
2	21 104						19.92		19.92	2 PAID IN FULL	MAY 31 1950	10607		1992									1072 9179
3	21 56						10.72		10.72	3													
4	21 44						8.42		8.42	4 PAID IN FULL	MAY 29 1950	7807		842									
5										5													
6	37						708	16	724	6 PAID IN FULL	MAR 23 1950	3463		724									
7		21 197					14890	240	15130	7 PAID IN FULL	OCT 25 1950	8461		7565		7565							3314 265
8	21 123						2356		2356	8 PAID IN FULL	DEC 7 1950	11401											
9	21 50						958		958	9 PAID IN FULL	DEC 7 1950												
10										10													
11	21 46						880		880	11 PAID IN FULL	MAY 22 1950	6532		880									842 67
12	21 44						842		842	12 PAID IN FULL	DEC 7 1950	14401											
13										13													
14										14													
15										15													
16	21 44						842		842	16													842 926
17	21 44						842		842	17													842
18	21 72						1494		1494	18													1494
19	21 44						842		842	19													842 926
20	H 768 71+ 37 805						15412	256	15668	20				13745		7565		4156					5092

142-30

Bush's Point
King's Green Shores
Rocky Point

Assessment Roll and Tax List of Real Property in the Town of Jarvis Lake

Form 500-11-54-20-2-54-20-54-20-54

IN WHOSE NAME ASSESSED	TO WHOM TRANSFERRED	DESCRIPTION OF PROPERTY			No. School District	Indicates Homestead Yes or No	Indicates Agricultural Yes or No	TRUE AND FULL VALUATIONS				ASSESSED VALUATIONS					FINAL EQUALIZED VALUE	
		Subdivision	Sec. of Map	Town or Block				Range	Number of Acres of Land	LAND Exclusive of Structures and Improvements	BUILDINGS and Other Structures	MACHINERY Permanently Attached to Real Estate	TOTAL True and Full Value	RURAL		ALL OTHER		MACHINERY Permanently Attached to Real Estate
								Dollars	Dollars	Dollars	Dollars	Dollars	Dollars	Dollars	Dollars	Dollars	Dollars	Dollars
	<i>H. V. & Agnes R. Brooks</i>																	
	U. S. of America																	
	U. S. of America																	
	U. S. of America																	
	State of Minnesota																	
	State of Minnesota																	
	State of Minnesota																	
	State of Minnesota																	
	State of Minnesota																	
	State of Minnesota																	
	State of Minnesota																	
	State of Minnesota																	

142-50

Cass County, Minnesota, for Taxes for the Year 1949.

SOLD FOR TAXES	VALUATIONS BY SCHOOL DISTRICTS AS EQUALIZED BY DEPARTMENT OF TAXATION						Tax including State Homestead	State Tax on Non-Homestead	SPECIAL TAXES	TOTAL TAXES	PAID	WHEN PAID			Number of Receipt	March Settlement 1950	June Settlement 1950	Penalty	November Settlement 1950	Penalty	Collections to First Monday in January 1951	Penalty	Delinquent on First Monday in January 1951	Total Delinquent Tax and Penalty	REMARKS	
	District No.	District No.	District No.	District No.	District No.	District No.						Rate	Rate	Rate												Rate
	Dollars	Dollars	Dollars	Dollars	Dollars	Dollars	\$ cts.	\$ cts.	\$ cts.	\$ cts.	\$ cts.	Month Day Year	\$ cts.	\$ cts.	\$ cts.	\$ cts.	\$ cts.	\$ cts.	\$ cts.	\$ cts.	\$ cts.	\$ cts.	\$ cts.			
1												<i>842</i>	1	OCT 25 1950 MAY 31 1950									<i>435</i>	<i>407</i>	<i>Balance</i>	
2													2													
3													3													
4													4													
5													5													
6													6													
7													7													
8													8													
9													9													
10													10													
11													11													
12													12													
13													13													
14													14													
15													15													
16													16													
17													17													
18													18													
19													19													
20													20													
												<i>4</i>														

Busi's Point
King's Green Shores
Rocky Point

Assessment Roll and Tax List of Real Property in the Lawson of Quidle Lake

142-30

IN WHOSE NAME ASSESSED	TO WHOM TRANSFERRED	SUBDIVISION	Number of Acres of Land		No. School District	Indicate Homestead Yes or No	Indicate Agricultural Yes or No	TRUE AND FULL VALUATIONS				ASSESSED VALUATIONS					FINAL EQUALIZED VALUE Dollars					
			Sec. or Lot	Town or Block				Reg.	Acres	100ths	LAND Exclusive of Structures and Improvements	BUILDINGS and Other Structures	MACHINERY Permanently Attached to Real Estate	TOTAL True and Full Value	RURAL			ALL OTHER		MACHINERY Permanently Attached to Real Estate	TOTAL ASSESSED VALUE	Total Assessed Value as Equalized by the Board of Review
											Dollars	Dollars	Dollars	Dollars	Homestead Up to \$4,000 20%	Over \$4,000 and Non-Homestead 33 1/3%		Homestead Up to \$4,000 25%	Over \$4,000 and Non-Homestead 40%	33 1/3%	Dollars	Dollars
<i>Walter A. Bennett</i>		NE 1/4 of NE 1/4	32	N 12	30	40	5	Pro														
		NW 1/4 of NE 1/4				40	..															
		SW 1/4 of NE 1/4				40	..															
		SE 1/4 of NE 1/4				40	..															
<i>Harry Conklin + Beth Mary Conklin</i>		NE 1/4 of NW 1/4				40	No															
<i>U. S. of America</i>		NW 1/4 of NW 1/4				40	Pro															
<i>Rodney Curtis</i>		SW 1/4 of NW 1/4				40	Pro															
<i>Harry Conklin + Beth Mary Conklin</i>		SE 1/4 of NW 1/4				40	No															
<i>David J. + Gery Guise</i>		NE 1/4 of SW 1/4				40	Pro															
<i>Rodney Curtis</i>		E 1/2 of NW 1/4 of SW 1/4				20	..															
		SW 1/4 of SW 1/4				40	..															
<i>Glen + Carrie Bennett</i>		SE 1/4 of SW 1/4				40	No															
<i>State of Minnesota</i>		1/2 of NW 1/4 of SW 1/4																				
<i>U. S. of America</i>		NE 1/4 of SE 1/4																				
<i>U. S. of America</i>		NW 1/4 of SE 1/4																				
<i>U. S. of America</i>		SW 1/4 of SE 1/4																				
<i>State of Minnesota</i>		SW 1/4 of SE 1/4 less 1 ac school lot 6																				

SOLD FOR TAXES	VALUATIONS BY SCHOOL DISTRICTS AS EQUALIZED BY DEPARTMENT OF TAXATION						Tax including State Homestead Mills	State Tax on Non-Homestead 4.58 Mills	SPECIAL TAXES	TOTAL TAXES	PAID	WHEN PAID	Number of Receipt	March Settlement 1950	June Settlement 1950	Penalty	November Settlement 1950	Penalty	Collections to First Monday in January 1951	Penalty	Delinquent on First Monday in January 1951	Total Delinquent Tax and Penalty	REMARKS	
	District No. 51	District No.	District No.	District No.	District No.	District No.																		
	Rate Mills	Rate Mills	Rate Mills	Rate Mills	Rate Mills	Rate Mills																		
	Dollars	Dollars	Dollars	Dollars	Dollars	Dollars																		
									1340		PAID IN FULL MAY 17 1950	6299												
									842		PAID IN FULL MAY 17 1950	6299												
									2930		PAID IN FULL MAY 17 1950	6299												
									900		PAID IN FULL MAY 17 1950	6299												
									1398	34	PAID IN FULL MAY 8 1950	5265												
									842		2nd Half Paid SEP 25 1950	1337												
									1398	34	PAID IN FULL MAY 8 1950	5265												
									1742		PAID IN FULL MAY 20 1950	777												
									422		2nd Half Paid SEP 25 1950	1337												
									2184		2nd Half Paid SEP 25 1950	1337												
									1436	34	PAID IN FULL FEB 8 1950	1233												

King's Point
Rocky Point

Assessment Roll and Tax List of Real Property in the Town of Lurde Lake

IN WHOSE NAME ASSESSED	TO WHOM TRANSFERRED	DESCRIPTION OF PROPERTY			No. School District	Indicate Homestead Yes or No	Indicate Agricultural Yes or No	TRUE AND FULL VALUATIONS			ASSESSED VALUATIONS					FINAL EQUALIZED VALUE			
		SUBDIVISION	Sec. or Lot	Town or Block				No. of Acres of Land	LAND Exclusive of Structures and Improvements	BUILDINGS and Other Structures	MACHINERY Permanently Attached to Real Estate	RURAL		ALL OTHER			MACHINERY Permanently Attached to Real Estate	TOTAL ASSESSED VALUE	Total Assessed Value as Equalized by the Board of Review
												Acres	100ths	Up to \$4,000 20%	Over \$4,000 and Non-Homestead 33 1/3%				
<i>Brno Liberts</i>		NE 1/4 of NE 1/4	34	1/2	30	5													
		NW 1/4 of NE 1/4			4	70													
		SW 1/4 of NE 1/4																	
		SE 1/4 of NE 1/4																	
State of Minnesota		Lot 10																	
U. S. of America		NE 1/4 of NW 1/4																	
U. S. of America		NW 1/4 of NW 1/4																	
<i>Peder A. Becken</i>		SW 1/4 of NW 1/4			40	70													
		SE 1/4 of NW 1/4			40														
State of Minnesota		Lot 11																	
		NE 1/4 of SW 1/4																	
<i>Peder A. Becken</i>		NW 1/4 of SW 1/4			40														
		SW 1/4 of SW 1/4			20														
		SE 1/4 of SW 1/4																	
<i>Brno Liberts</i>		Lot 1			9 55														
<i>C. L. Nelson</i>		NE 1/4 of SE 1/4			20 65														
		NW 1/4 of SE 1/4																	
		SW 1/4 of SE 1/4																	
		SE 1/4 of SE 1/4																	
<i>Brno Liberts</i>		Lot 5			12 04	70													

SOLID FOR TAXES	VALUATIONS BY SCHOOL DISTRICTS AS EQUALIZED BY DEPARTMENT OF TAXATION						Tax including State Homestead	State Tax on Non-Homestead	SPECIAL TAXES	TOTAL TAXES	PAID	WHEN PAID	Number of Receipt	March Settlement 1950	June Settlement 1950	Penalty	November Settlement 1950	Penalty	Collections to First Monday in January 1951	Penalty	Delinquent on First Monday in January 1951	Total Delinquent Tax and Penalty	REMARKS
	District No. 5	District No. 1	District No. 2	District No. 3	District No. 4	District No. 5																	
	Rate	Rate	Rate	Rate	Rate	Rate																	
	14.5 Mills						4.58																
1																							
2	73						1398	34	1432		PAID IN FULL	MAY 1 1950	7558								1432		
3																							
4																							
5																							
6																							
7																							
8	SOLD FOR TAXES	73					1398	34	1432		2nd Half Paid	OCT 2 8 1950	12981								716	716	
9	SOLD FOR TAXES	73					1398	34	1432		1st Half Paid	MAY 1 9 1950	6408								716	716	
10																							
11																							
12	SOLD FOR TAXES	73					1398	34	1432		2nd Half Paid	OCT 2 8 1950	12981								716	716	
13	SOLD FOR TAXES	37					708	16	724		1st Half Paid	OCT 2 8 1950	12981								362	362	
14																							
15							862	20	882		PAID IN FULL	MAY 1 1 1950	7558								882		
16							2374	56	2430		PAID IN FULL	MAY 3 1 1950	8455								2430		
17																							
18																							
19																							
20							652	16	668		PAID IN FULL	MAY 1 1 1950	7558								668		
							101.88	244	10432												79 22	2510	

Push's Point King's Green Shores Rocky Point

Assessment Roll and Tax List of Real Property in the Second of Judds Lake

IN WHOSE NAME ASSESSED	TO WHOM TRANSFERRED	DESCRIPTION OF PROPERTY			TRUE AND FULL VALUATIONS					ASSESSED VALUATIONS					FINAL EQUALIZED VALUE		
		Subdivision	Sec. or Lot	Town or Block	No. of Acres of Land	LAND Exclusive of Structures and Improvements	BUILDINGS and Other Structures	MACHINERY Permanently Attached to Real Estate	TOTAL True and Full Value	RURAL		ALL OTHER		MACHINERY Permanently Attached to Real Estate 33 1/4 %		TOTAL ASSESSED VALUE	Total Assessed Value as Equalized by the Board of Review
										Homestead Up to \$4,000 20%	Over \$4,000 and Non-Homestead 33 1/4 %	Homestead Up to \$4,000 25%	Over \$4,000 and Non-Homestead 40%				
Albert Thomas	King's Green Shores (Part of Grant Lot 7 Sec 31-14-130)		1														
			2														
			3														
			4														
			5														
			6														
			7														
			8														
			9														
			10														
			11														
			12														
			13														
			14														
			15														
			16														
			17														
			18														
			19														
			20														

Cass County, Minnesota, for Taxes for the Year 1949.

SOLD FOR TAXES	VALUATIONS BY SCHOOL DISTRICTS AS EQUALIZED BY DEPARTMENT OF TAXATION						Tax including State Homestead	State Tax on Non-Homestead	SPECIAL TAXES	TOTAL TAXES	PAID	WHEN PAID	Number of Receipts	March Settlement 1950	June Settlement 1950	November Settlement 1950	Penalty	Collections to First Monday in January 1951	Penalty	Delinquent on First Monday in January 1951	Total Delinquent Tax and Penalty	REMARKS
	District No. 2	District No. 5	District No. 6	District No. 7	District No. 8	District No. 9																
	Rate	Rate	Rate	Rate	Rate	Rate																
1	20								20	2nd Half Paid	OCT 31 1950											
2	20								20	1st Half Paid	MAY 31 1950											
3	20								20	2nd Half Paid	OCT 31 1950											
4	20								20	1st Half Paid	MAY 31 1950											
5	20								20	2nd Half Paid	OCT 31 1950											
6	20								20	1st Half Paid	MAY 31 1950											
7	20								20	2nd Half Paid	OCT 31 1950											
8	20								20	1st Half Paid	MAY 31 1950											
9	20								20	2nd Half Paid	OCT 31 1950											
10	20								20	1st Half Paid	MAY 31 1950											
11	20								20	2nd Half Paid	OCT 31 1950											
12	20								20	1st Half Paid	MAY 31 1950											
13	20								20	2nd Half Paid	OCT 31 1950											
14	20								20	1st Half Paid	MAY 31 1950											
15	20								20	2nd Half Paid	OCT 31 1950											
16	20								20	1st Half Paid	MAY 31 1950											
17	20								20	2nd Half Paid	OCT 31 1950											
18	20								20	1st Half Paid	MAY 31 1950											
19	20								20	2nd Half Paid	OCT 31 1950											
20	20								20	1st Half Paid	MAY 31 1950											

Bush's Point
King's Green Shores

Rocky Point

Assessment Roll and Tax List of Real Property in the Town of Jurds Lake

FORM 50 MILLER-BAYNE COMPANY, MINNEAPOLIS

IN WHOSE NAME ASSESSED	TO WHOM TRANSFERRED	DESCRIPTION OF PROPERTY			No. School District	Indicate Homestead Yes or No	Indicate Agricultural Yes or No	TRUE AND FULL VALUATIONS				ASSESSED VALUATIONS					FINAL EQUALIZED VALUE			
		Sec. or Lot	Town or Block	Ri.g.				Number of Acres of Land	LAND Exclusive of Structures and Improvements	BUILDINGS and Other Structures	MACHINERY Permanently Attached to Real Estate	TOTAL True and Full Value	RURAL		ALL OTHER			MACHINERY Permanently Attached to Real Estate 33 1/3%	TOTAL ASSESSED VALUE	Total Assessed Value as Equalized by the Board of Review
													Acres	100ths	Homestead Up to \$4,000 20%	Over \$4,000 and Non-Homestead 33 1/3%				
Albert Thomas	King's Green Shores	21			5															
		22																		
		23																		
		24																		
	Outlot	A																		
		B																		
		C																		

Cass County, Minnesota, for Taxes for the Year 1949.

SOLD FOR TAXES	VALUATIONS BY SCHOOL DISTRICTS AS EQUALIZED BY DEPARTMENT OF TAXATION						Tax Including State Homestead	State Tax on Non-Homestead	SPECIAL TAXES	TOTAL TAXES	PAID	WHEN PAID	Number of Receipt	March Settlement 1950	June Settlement 1950	Penalty	November Settlement 1950	Penalty	Collections to First Monday in January 1951	Penalty	Delinquent on First Monday in January 1951	Total Delinquent Tax and Penalty	REMARKS
	District No. 5	District No. 5	District No. 5	District No. 5	District No. 5	District No. 5																	
	Rate	Rate	Rate	Rate	Rate	Rate																	
1	20								20		1st Half Paid MAY 31 1950												
2	20								20		2nd Half Paid OCT 31 1950												
3	20								20		1st Half Paid MAY 31 1950												
4	20								20		2nd Half Paid OCT 31 1950												
5	20								20		1st Half Paid MAY 31 1950												
6	20								20		2nd Half Paid OCT 31 1950												
7	20								20		1st Half Paid MAY 31 1950												
8																							
9																							
10																							
11																							
12																							
13																							
14																							
15																							
16																							
17																							
18																							
19																							
20																							

14-50 Bush's Point King's Green Shores

Rocky Point

Assessment Roll and Tax List of Real Property in the *Second* of *Lurline Lake*

IN WHOSE NAME ASSESSED		TO WHOM TRANSFERRED		DESCRIPTION OF PROPERTY			TRUE AND FULL VALUATIONS				ASSESSED VALUATIONS					FINAL EQUALIZED VALUE			
				SUBDIVISION			LAND Exclusive of Structures and Improvements	BUILDINGS and Other Structures	MACHINERY Permanently Attached to Real Estate	TOTAL True and Full Value	RURAL		ALL OTHER			MACHINERY Permanently Attached to Real Estate 33 1/3%	TOTAL ASSESSED VALUE	Total Assessed Value as Equalized by the Board of Review	Dollars
				Sec. or Lot	Town or Block	Acres of Land					Homestead Up to \$4,000 20%	Over \$4,000 and Non- Homestead 33 1/3%	Homestead Up to \$1,000 25%	Over \$4,000 and Non- Homestead 40%	Dollars				
<i>Paul J. & Mary L. Nuygen</i>				<i>Rocky Point (Lot 12 - Sec. 35-142-30)</i>															
				1															
				2															
				3															
				4															
				5															
				6															
				7															
				8															
				9															
				10															
				11															
				12															
				13															
				14															
				15															
				16															
				17															
				18															
				19															
				20															

SOLD FOR TAXES	VALUATIONS BY SCHOOL DISTRICTS AS EQUALIZED BY DEPARTMENT OF TAXATION						Tax including State Homestead Mills	State Tax on Non- Homestead 4.8 Mills	SPECIAL TAXES	TOTAL TAXES	PAID	WHEN PAID	Number of Recd.	March Settlement 1950	June Settlement 1950	Penalty	November Settlement 1950	Penalty	Collections to First Monday in January 1951	Penalty	Delinquent on First Monday in January 1951	Total Delinquent Tax and Penalty	REMARKS
	District No.	District No.	District No.	District No.	District No.	District No.																	
	Rate Mills	Rate Mills	Rate Mills	Rate Mills	Rate Mills	Rate Mills																	
	Dollars	Dollars	Dollars	Dollars	Dollars	Dollars																	
1							76	02 1/2		78	1st Half Paid	OCT 31 1950											
2							76	02 1/2		78	2nd Half Paid	MAY 31 1950											
3							76	02 1/2		78	1st Half Paid	OCT 31 1950											
4							76	02 1/2		78	2nd Half Paid	MAY 31 1950											
5							76	02 1/2		78	1st Half Paid	OCT 31 1950											
6							76	02 1/2		78	2nd Half Paid	MAY 31 1950											
7							746	18 1/2		764	1st Half Paid	OCT 31 1950											
8							76	02 1/2		78	2nd Half Paid	MAY 31 1950											
9							880	22 1/2		902	1st Half Paid	OCT 31 1950											
10							880	22 1/2		902	2nd Half Paid	MAY 31 1950											
11							76	02 1/2		78	1st Half Paid	OCT 31 1950											
12							76	02 1/2		78	2nd Half Paid	MAY 31 1950											
13																							
14																							
15																							
16																							
17																							
18																							
19																							
20																							
							2190	80		3270													

142-50
 Bush's Point
 King's Green Shores
 Rocky Point

1635

1635

