

ASSESSMENT & TAX LIST - 1956

Trelipe

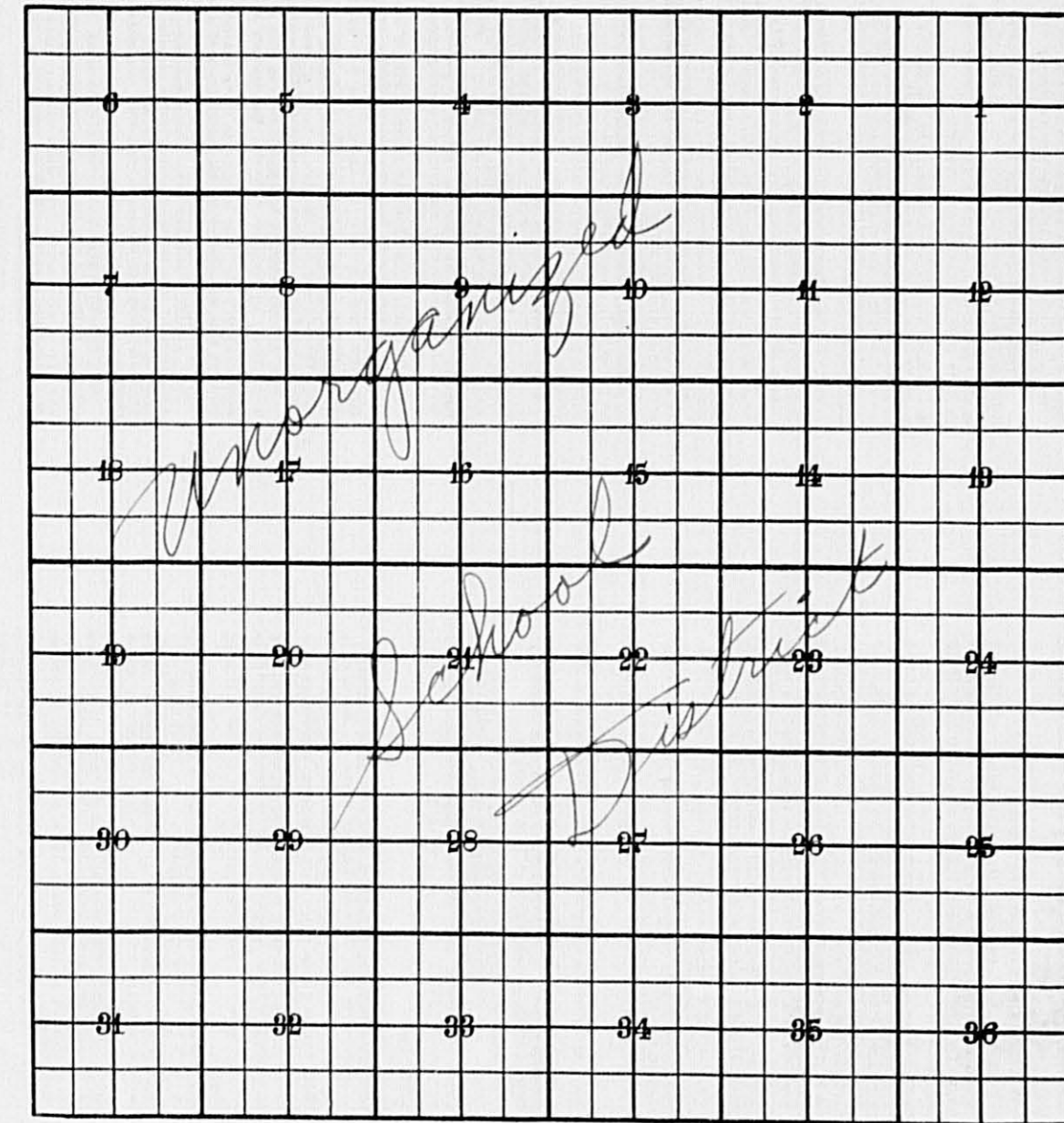
INDEX TO SECTIONS

SECTION PAGE

Sec. 1.....	
" 2.....	
" 3.....	
" 4.....	
" 5.....	
" 6.....	
" 7.....	
" 8.....	
" 9.....	
" 10.....	
" 11.....	
" 12.....	
" 13.....	
" 14.....	
" 15.....	
" 16.....	
" 17.....	
" 18.....	
" 19.....	
" 20.....	
" 21.....	
" 22.....	
" 23.....	
" 24.....	
" 25.....	
" 26.....	
" 27.....	
" 28.....	
" 29.....	
" 30.....	
" 31.....	
" 32.....	
" 33.....	
" 34.....	
" 35.....	
" 36.....	

For Convenience of Auditor in Showing Boundaries of School Districts

Township No. 139-4140 Range No. 27 Mer. P. M.



Returns Showing Grain Received in or Handled by Elevators, Warehouses and Mills in the \_\_\_\_\_ of \_\_\_\_\_ in the \_\_\_\_\_ County of \_\_\_\_\_ for the Year Ending May 1, 1956.

NAMES OF OWNERS	ADDRESS	Bushels of Wheat	Bushels of Soy Beans	Bushels of Flax	Total No. of Bushels of Wheat, Soy Beans and Flax	★ Tax of 1/4 Mill per Bushel		Bushels of Corn	Bushels of Barley	Bushels of Rye	Bushels of Oats	Bushels of Buckwheat	Bushels of Other Grains	Total No. Bushels of Corn, Barley, Rye, Oats, Buckwheat and all Other Grains	★ Tax of 1/4 Mill per Bushel		★ Total Tax		REMARKS		
						Dollars	Cts.								Dollars	Cts.	Dollars	Cts.			

Note ★ Assessors will not fill these Columns

Assessor's Return of Exempt Real Property in the Town of Irelife County of \_\_\_\_\_, Minnesota, for the Year 1956

FORM 2 MILLER-DAVIS COMPANY, MINNEAPOLIS

NAMES OF OWNERS	DESCRIPTION				No. of Acres		FOR WHAT PURPOSE USED	TRUE AND FULL VALUATIONS				ASSESSED VALUATIONS		REMARKS
	SUBDIVISION	Sec. or Lot	Town or Block	Range	Acres	100ths		LAND Exclusive of Structures and Improvements Dollars	BUILDINGS and Other Structures Dollars	MACHINERY Permanently Attached to Real Estate Dollars	TOTAL True and Full Value Dollars	Rural Including Machinery	All Other	
												33 1/3%	40%	
Town of Irelife			14	140	27	2		32	1000		1032	344		
Town of Irelife	Lot 6		24	140	27			210			210	70		
" " "	SW 1/4 of SW 1/4		24	140	27			210			210	70		
" " "	SE 1/4 of SW 1/4		24	140	27			210			210	70		
" " "	NE 1/4 of NW 1/4		25	140	27			210			210	70		
" " "	NW 1/4 of NW 1/4		25	140	27			210			210	70		
" " "	SW 1/4 of NW 1/4		25	140	27			210			210	70		
" " "	SE 1/4 of NW 1/4		25	140	27			210			210	70		
" " "	NW 1/4 of SW 1/4		25	140	27			210			210	70		
											2112	904		

10-27  
 Birchwood Shores  
 Brookman's Linden  
 Beach

Assessor's Return of Exempt Real Property in the \_\_\_\_\_ of \_\_\_\_\_ County of \_\_\_\_\_, Minnesota, for the Year 1956

FORM 2 MILLER-DAY COMPANY, MINNEAPOLIS

NAMES OF OWNERS	DESCRIPTION				No. of Acres	FOR WHAT PURPOSE USED	TRUE AND FULL VALUATIONS				ASSESSED VALUATIONS		REMARKS				
	SUBDIVISION	Sec. or Lot	Town or Block	Range			LAND Exclusive of Structures and Improvements	BUILDINGS and Other Structures	MACHINERY Permanently Attached to Real Estate	TOTAL True and Full Value	Rural Including Machinery 33⅓%	All Other 40%					
														Dollars	Dollars	Dollars	Dollars
														Dollars	Dollars	Dollars	Dollars
Acres	100ths																

SUMMARY OF TAX COLLECTION

Original Levy	- - - - -	\$ 5198.06
Additions	- - - - -	\$ _____
		\$ _____
Abatements	- - - - -	\$ 9.14
		\$ 5188.92

COLLECTIONS

March Settlement	- - - - -	\$ 1042.69
June Settlement	- - - - -	\$ 2886.34
November Settlement	- - - - -	\$ 800.85
January Settlement	- - - - -	\$ 37.65
		\$ 4767.53
		\$ _____
Over Collected	- - - - -	\$ 1.0
Under Collected	- - - - -	\$ _____
Delinquent	- - - - -	\$ 421.49
		\$ 421.39
Total	- - - - -	\$ 5188.92

139-27  
110-27  
Hirchwood Shores  
Brookman's Landing Beach

NAMES OF OWNERS

TABULAR SCHEDULE OF VALUATIONS, LEVIED IN THE Town of Deluge

Table with columns for School District, Valuation by School Districts, Rate of State Taxes, Rate of County Taxes, Rate of Town Taxes, and Rate of School Taxes. Includes handwritten entries for 'Uln' and 'N. H. 534'.

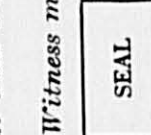
Summary table for Assessed Value: Rural, All Other, Personal Property, Total. Includes handwritten values like 4146, 14015, 18161, 3968, 17983, 22129.

RATES AND TAXES COUNTY OF CASS, STATE OF MINNESOTA

Table for Rates and Taxes, including School Taxes and Taxes Levied. Includes handwritten entries for 'Ref. Transp. C.O.' and 'Capital Outlay'.

Total Taxes Real Estate 4212.86, Pers. Prop. 985.20, Total 5198.06

Auditor's statement: I, L. C. Peterson, Auditor of said County and State of Minnesota, do hereby certify that the foregoing is a true and correct schedule, showing the valuation of all the taxable property, in the County of Deluge, in said County, the several rates of taxation and Totals of the several Tax Funds levied thereon for the year A. D. 1957.



Total Levy, \$ 5198.06

Total Number of Acres 8712.22

Richwood Shores Brookman's Linderh Beach

Assessor's Return o

COLLECTIONS OF TAXES OF 1956 *Town* OF *Lelipe*, CASS COUNTY, MINNESOTA

FORM 2 MILLER-DAY COMPANY, MINNEAPOLIS

FUNDS	MARCH SETTLEMENT	JUNE SETTLEMENT	NOV. SETTLEMENT	Amount Collected from Nov. 19... to First Monday in Jan. 19...	REDUCTIONS	Total Reductions and Collected	BALANCE UNCOLLECTED	ADDITIONS	Total Uncollected to First Monday in January, 19...
	1957	1957	1957						
State—Non-Homestead, State—Homestead,	2095 1616	5960 4536	1310 1056	22 67					
County Revenue, County Road and Bridge, County Welfare, County Bond and Interest, <i>R. &amp; B. Bldg. Well. Dep. Cash Co. Agric.</i>	11489 6016 20237 3284 848 3063 212	32241 46882 56790 9215 2372 9595 595	9308 2874 16394 2666 687 2482 3472	455 238 801 130 33 122 08					
Town Revenue, Town Road and Bridge, Town Drag, State Loan, <i>Phone</i>	4242 6364 425 4242	11905 17858 1192 11905	3437 5156 344 3437	168 252 17 169					
School Local 1 Mill, School Special, School State Loan, Deficiency Tuition Transportation C. O.	424 16868 16970 311 6363	1191 41038 47621 870 17858	343 9270 13748 257 5156	16 334 672 12 252					
TOTALS	104269	288634	80085	3765					

MARCH SETTLEMENT	SCHOOL DISTRICT NO.	LOCAL 1 MILL	SPECIAL	STATE LOAN	Deficiency <i>Langs.</i>	C. O.	TOTALS
	<i>A Un. Na Un.</i>	45 379	902 15766		1864 15766	33 278	676 5687
	TOTALS	424	16068		16970	311	6363
	<i>A Un. Na Un.</i>	329 862	6584 34454		13167 34454	241 629	4938 12920
	TOTALS	1191	41038		47621	870	17858
	<i>A Un. Na Un.</i>	224 119	4478 4792		8956 4792	164 87	3359 1797
	TOTALS	343	9270		13748	257	5156
	<i>A Un.</i>	16	334		672	12	252
	TOTALS	16	334		672	12	252
	TOTALS						

1-30-57  
 110-27  
 Birchwood Shores  
 Brookman's Linden Beach

Assessment Roll and Tax List of Real Property in the Town of Irlande,

Cass County, Minnesota, for Taxes for the Year 1956.

\* Indicate Type of Property: R-Residential, C-Commercial, I-Industrial, U-Utility, F-Farm, L-Lakeshore, T-Timber, M-Mineral

Form 5C (56) MILLER-SAYRE COMPANY, MINNEAPOLIS

Table with columns: IN WHOSE NAME ASSESSED, TO WHOM TRANSFERRED, DESCRIPTION OF PROPERTY, TRUE AND FULL VALUATIONS (RURAL, ALL OTHER, MACHINERY, TOTAL ASSESSED VALUE), SOLD FOR TAXES, VALUATIONS BY SCHOOL DISTRICTS AS EQUALIZED BY DEPARTMENT OF TAXATION, TAX INCLUDING STATE HOMESTEAD, SPECIAL TAXES, TOTAL TAXES, PAID, WHEN PAID, Number of Receipt, March Settlement 1957, June Settlement 1957, Penalty, November Settlement 1957, Penalty, Collections to First Monday in January 1958, Penalty, Delinquent on First Monday in January 1958, Total Delinquent Tax and Penalty, REMARKS.

Table with columns: District No., District No., District No., District No., District No., District No., Tax including State Homestead, State Tax on Non-Homestead, SPECIAL TAXES, TOTAL TAXES, PAID, WHEN PAID, Number of Receipt, March Settlement 1957, June Settlement 1957, Penalty, November Settlement 1957, Penalty, Collections to First Monday in January 1958, Penalty, Delinquent on First Monday in January 1958, Total Delinquent Tax and Penalty, REMARKS.

139-27

110-27

Birchwood Stores

Brookman's Lumber  
Beach





Assessment Roll and Tax List of Real Property in the Town of Indigo,

Cass County, Minnesota, for Taxes for the Year 1956.

\* Indicate Type of Property: R-Residential, C-Commercial, I-Industrial, U-Utility, F-Farm, L-Lakeshore, T-Timber, M-Mineral

Form 50 (56) WILLS-BAYE COMPANY, MINNEAPOLIS

139-27

Table with 30 columns: IN WHOSE NAME ASSESSED, TO WHOM TRANSFERRED, SUBDIVISION, TRUE AND FULL VALUATIONS, ASSESSED VALUATIONS, VALUATIONS BY SCHOOL DISTRICTS AS EQUALIZED BY DEPARTMENT OF TAXATION, SOLD FOR TAXES, SPECIAL TAXES, TOTAL TAXES, PAID, WHEN PAID, Number of Receipt, March Settlement 1957, June Settlement 1957, November Settlement 1957, Collections to First Monday in January 1958, Delinquent on First Monday in January 1958, Total Delinquent Tax and Penalty, REMARKS.

110-27

Birchwood Shores

Brookman's Linden Beach



Assessment Roll and Tax List of Real Property in the Town of Islelpe,

Cass County, Minnesota, for Taxes for the Year 1956.

Form 5C (56) WILHELM-DAVIS COMPANY, MINNEAPOLIS \* Indicate Type of Property: R-Residential, C-Commercial, I-Industrial, U-Utility, F-Farm, L-Lakeshore, T-Timber, M-Mineral

139-27

Table with columns: IN WHOSE NAME ASSESSED, TO WHOM TRANSFERRED, DESCRIPTION OF PROPERTY, TRUE AND FULL VALUATIONS, ASSESSED VALUATIONS, VALUATIONS BY SCHOOL DISTRICTS AS EQUALIZED BY DEPARTMENT OF TAXATION, SOLD FOR TAXES, PAID, WHEN PAID, Number of Receipt, March Settlement 1957, June Settlement 1957, November Settlement 1957, Penalty, Collections to First Monday in January 1958, Delinquent on First Monday in January 1958, Total Delinquent Tax and Penalty, REMARKS.

110-27

Hirchwood Shores

Brookman's Landing Beach



Assessment Roll and Tax List of Real Property in the Town of Lulipe,

Cass County, Minnesota, for Taxes for the Year 1956.

Form 501 (5-56) DILLER-BATES COMPANY, MINNEAPOLIS \* Indicate Type of Property: R-Residential, C-Commercial, I-Industrial, U-Utility, F-Farm, L-Lakeshore, T-Timber, M-Mineral

Table with columns: IN WHOSE NAME ASSESSED, TO WHOM TRANSFERRED, DESCRIPTION OF PROPERTY (Subdivision, Sec. or Lot, Town or Block, Rng., Number of Acres of Land), TRUE AND FULL VALUATIONS (Land, Buildings, Machinery, Total True and Full Value), ASSESSED VALUATIONS (Rural, All Other, Machinery, Total Assessed Value), FINAL EQUALIZED VALUE.

Table with columns: SOLD FOR TAXES, VALUATIONS BY SCHOOL DISTRICTS AS EQUALIZED BY DEPARTMENT OF TAXATION (District No., Rate, Mills), Tax including State Homestead, State Tax on Non-Homestead, SPECIAL TAXES, TOTAL TAXES, PAID, WHEN PAID (Month, Day, Year), Number of Receipt, March Settlement 1957, June Settlement 1957, November Settlement 1957, Collections to First Monday in January 1958, Delinquent on First Monday in January 1958, Total Delinquent Tax and Penalty, REMARKS.

139-27

110-27

Hatchwood Shores

Brookman's Landing Beach























Assessment Roll and Tax List of Real Property in the Town of Inalipe, Cass County, Minnesota, for Taxes for the Year 1956.

Cass County, Minnesota, for Taxes for the Year 1956.

Form 501-1561 WILSON-DAVIS COMPANY, MINNEAPOLIS. Form No. 501-1561

Table with columns: IN WHOSE NAME ASSESSED, TO WHOM TRANSFERRED, DESCRIPTION OF PROPERTY, TRUE AND FULL VALUATIONS, ASSESSED VALUATIONS, and FINAL EQUALIZED VALUE. Rows 1-20 listing subdivisions from NE 1/4 of NE 1/4 to SE 1/4 of SE 1/4.

Table with columns: VALUATIONS BY SCHOOL DISTRICTS AS EQUALIZED BY DEPARTMENT OF TAXATION, TAX INCLUDING STATE HOMESTEAD, STATE TAX ON NON-HOMESTEAD, SPECIAL TAXES, TOTAL TAXES, PAID, WHEN PAID, and REMARKS. Rows 1-20 corresponding to subdivisions on the left page.

Vertical text on the right edge of the page: Eren's Stores, Birchwood Stores, Brookman's Linder, Leach.









Assessment Roll and Tax List of Real Property in the Town of Lakota of DeLuque County, Minnesota

\* Indicate Type of Property: R-Residential, C-Commercial, I-Industrial, U-Utility, F-Farm, L-Lakeshore, T-Timber, M-Mineral

Cass County, Minnesota, for Taxes for the Year 1956.

Table with multiple columns: IN WHOSE NAME ASSESSED, TO WHOM TRANSFERRED, DESCRIPTION OF PROPERTY (SUBDIVISION, Sec. or Lot, Town or Block, Rng., Number of Acres of Land), TRUE AND FULL VALUATIONS (LAND, BUILDINGS, MACHINERY, TOTAL), ASSESSED VALUATIONS (RURAL, ALL OTHER, MACHINERY, TOTAL ASSESSED VALUE), VALUATIONS BY SCHOOL DISTRICTS AS EQUALIZED BY DEPARTMENT OF TAXATION, SOLD FOR TAXES, SPECIAL TAXES, TOTAL TAXES, PAID, WHEN PAID, Number of Receipt, March Settlement 1957, June Settlement 1957, Penalty, November Settlement 1957, Penalty, Collections to First Monday in January 1958, Penalty, Delinquent on First Monday in January 1958, Total Delinquent Tax and Penalty, REMARKS.

139-27

110-27

Richwood Stores

Brookman's Linden

Leach

Assessment Roll and Tax List of Real Property in the Town of Helix

\* Indicate Type of Property: R-Residential, C-Commercial, I-Industrial, U-Utility, F-Farm, L-Lakeshore, T-Timber, M-Mineral

Form SC (56) HILLS-DAY COMPANY, MINNEAPOLIS

Table with columns: IN WHOSE NAME ASSESSED, TO WHOM TRANSFERRED, DESCRIPTION OF PROPERTY, TRUE AND FULL VALUATIONS, ASSESSED VALUATIONS, FINAL EQUALIZED VALUE. Includes rows for lots 1 through 20.

Cass County, Minnesota, for Taxes for the Year 1956.

Table with columns: VALUATIONS BY SCHOOL DISTRICTS AS EQUALIZED BY DEPARTMENT OF TAXATION, TAXES, PAID, WHEN PAID, Number of Receipt, March Settlement 1957, June Settlement 1957, November Settlement 1957, Collections to First Monday in January 1958, Delinquent on First Monday in January 1958, Total Delinquent Tax and Penalty, REMARKS.

Vertical text on the right edge of the page, including '110-27' and 'Brookman's Linder'.









Assessment Roll and Tax List of Real Property in the Town of Delice,

\* Indicate Type of Property: R-Residential, C-Commercial, I-Industrial, U-Utility, F-Farm, L-Lakeshore, T-Timber, M-Mineral

Form 501 (56) MUELLER-BRAN COMPANY, MINNEAPOLIS

Table with columns: IN WHOSE NAME ASSESSED, TO WHOM TRANSFERRED, SUBDIVISION, TRUE AND FULL VALUATIONS (LAND, BUILDINGS, MACHINERY, TOTAL), ASSESSED VALUATIONS (RURAL, ALL OTHER, MACHINERY, TOTAL), FINAL EQUALIZED VALUE.

Cass County, Minnesota, for Taxes for the Year 1956.

Table with columns: SOLD FOR TAXES, VALUATIONS BY SCHOOL DISTRICTS AS EQUALIZED BY DEPARTMENT OF TAXATION, SPECIAL TAXES, TOTAL TAXES, PAID, WHEN PAID, Number of Receipt, March Settlement 1957, June Settlement 1957, November Settlement 1957, Collections to First Monday in January 1958, Delinquent on First Monday in January 1958, Total Delinquent Tax and Penalty, REMARKS.

1-10-27  
Ewert's Stores  
Birchwood Stores  
Brookman's Linder  
Beach













Assessment Roll and Tax List of Real Property in the Town of *Jawa* of *Ishpesh*

\* Indicate Type of Property: R-Residential, C-Commercial, I-Industrial, U-Utility, F-Farm, L-Lakeshore, T-Timber, M-Mineral

Cass County, Minnesota, for Taxes for the Year 1956.

Table with columns: IN WHOSE NAME ASSESSED, TO WHOM TRANSFERRED, DESCRIPTION OF PROPERTY, TRUE AND FULL VALUATIONS, ASSESSED VALUATIONS, VALUATIONS BY SCHOOL DISTRICTS, and TAXES. Includes handwritten entries for 'State of Minnesota' and 'Set 1', 'Set 2', 'Set 3'.

139-27

110-27

Ernie's Stores, Birchwood Stores, Brookman's Linder







Assessment Roll and Tax List of Real Property in the Town of Isleipe, of Isleipe, Cass County, Minnesota, for Taxes for the Year 1956.

Cass County, Minnesota, for Taxes for the Year 1956.

Form 504 (56) MILLER-SAYRE COMPANY, MINNEAPOLIS \* Indicate Type of Property: R-Residential, C-Commercial, I-Industrial, U-Utility, F-Farm, L-Lakeshore, T-Timber, M-Mineral

Table with columns: IN WHOSE NAME ASSESSED, TO WHOM TRANSFERRED, SUBDIVISION, Acres, 100ths, No. School District, Indicate Homestead, Indicate Agricultural, Indicate Type of Property, TRUE AND FULL VALUATIONS (LAND, BUILDINGS, MACHINERY, TOTAL), ASSESSED VALUATIONS (RURAL, ALL OTHER, MACHINERY, TOTAL ASSESSED), FINAL EQUALIZED VALUE.

Table with columns: SOLD FOR TAXES, VALUATIONS BY SCHOOL DISTRICTS AS EQUALIZED BY DEPARTMENT OF TAXATION (District No., Rate, Mills), Tax Including State Homestead, State Tax on Non-Homestead, SPECIAL TAXES, TOTAL TAXES, PAID, WHEN PAID, Number of Receipt, March Settlement, June Settlement, November Settlement, Collections to First Monday, Delinquent on First Monday, Total Delinquent Tax and Penalty, REMARKS.

139-27

110-27

First's Stores

Firewood Stores

Brookman's Linden Beach







Assessment Roll and Tax List of Real Property in the Town of ... of ...

Cass County, Minnesota, for Taxes for the Year 1956.

Form 50 (56) BULLOCK-BAYNE COMPANY, MINNEAPOLIS

\* Indicate Type of Property: R-Residential, C-Commercial, I-Industrial, U-Utility, F-Farm, L-Lakeshore, T-Timber, M-Mineral

Table with columns: IN WHOSE NAME ASSESSED, TO WHOM TRANSFERRED, DESCRIPTION OF PROPERTY, TRUE AND FULL VALUATIONS, ASSESSED VALUATIONS, VALUATIONS BY SCHOOL DISTRICTS AS EQUALIZED BY DEPARTMENT OF TAXATION, TAXES, PAID, WHEN PAID, Number of Receipt, March Settlement 1957, June Settlement 1957, Penalty, November Settlement 1957, Collections to First Monday in January 1958, Penalty, Delinquent on First Monday in January 1958, Total Delinquent Tax and Penalty, REMARKS.

110-27

Emer's Stores

Birchwood Stores

Brookman's Linder Beach

Assessment Roll and Tax List of Real Property

Form 50 (56) UNLESS-SALE PROPERTY, MINNEAPOLIS

Table with columns: IN WHOSE NAME ASSESSED, TO WHOM TRANSFERRED, SUBDIVISION. Contains handwritten entries for various owners like Roland Edwards, Clarence E. & Elizabeth M. Strenak, Guy Wm. & Bella Thompson, etc.

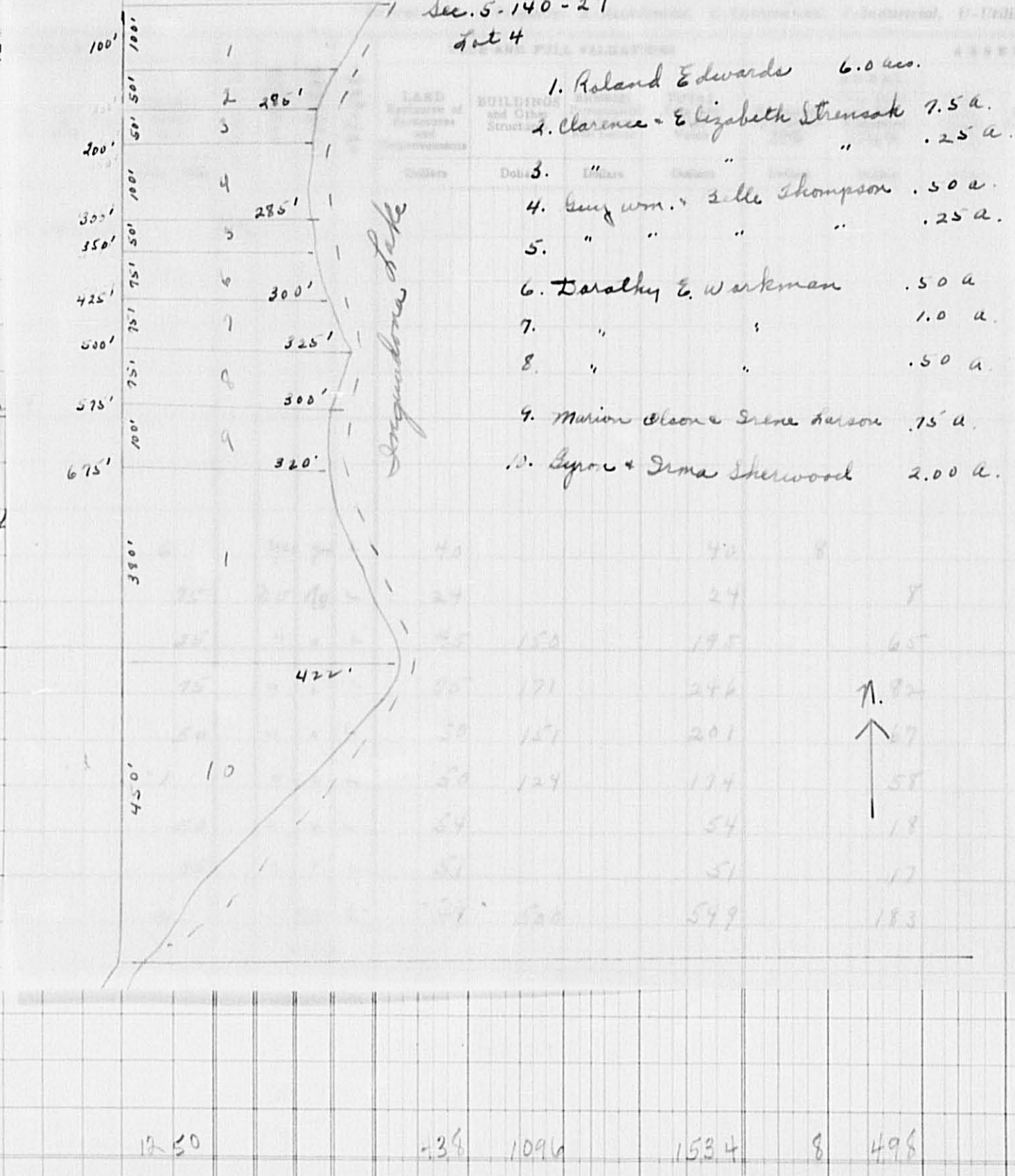


Table titled 'ASSESSMENT VALUATIONS' with columns: ALL OTHER, MACHINERY Over \$4,000, MACHINERY Permanently Attached to Real Estate, TOTAL ASSESSED VALUE, Total Assessed Value as Equalized by the Board of Review, FINAL EQUALIZED VALUE. Includes handwritten calculations at the bottom: 498 = 498, 498 = 506.

Cass County, Minnesota, for Taxes for the Year 1956.

Main tax assessment table with columns: SOLD FOR TAXES, VALUATIONS BY SCHOOL DISTRICTS AS EQUALIZED BY DEPARTMENT OF TAXATION (District No., Rate, etc.), Tax including State Homestead, State Tax on Non-Homestead, SPECIAL TAXES, TOTAL TAXES, PAID, WHEN PAID, Number of Receipt, March Settlement 1957, June Settlement 1957, November Settlement 1957, Penalty, Collections to First Monday in January 1958, Delinquent on First Monday in January 1958, Total Delinquent Tax and Penalty, REMARKS. Includes handwritten notes like '1st Half Paid', 'PAID IN FULL', and various amounts.

139-27

110-27

139-27

110-27

139-27

110-27





Assessment Roll and Tax List of Real Property in the Town of Delaplace, Cass County, Minnesota, for Taxes for the Year 1956.

Form 50 (56) MILLER-BAYNE COMPANY, MINNEAPOLIS. \* Indicate Type of Property: R-Residential, C-Commercial, I-Industrial, U-Utility, F-Farm, L-Lakeshore, T-Timber, M-Mineral

Table with columns: IN WHOSE NAME ASSESSED, TO WHOM TRANSFERRED, DESCRIPTION OF PROPERTY, TRUE AND FULL VALUATIONS, ASSESSED VALUATIONS, and FINAL EQUALIZED VALUE. Includes handwritten entries for property owners like Clifford B. & Lois R. Reagak and Roland Edwards.

Cass County, Minnesota, for Taxes for the Year 1956.

Table with columns: VALUATIONS BY SCHOOL DISTRICTS AS EQUALIZED BY DEPARTMENT OF TAXATION, TAXES, PAID, WHEN PAID, Number of Receipt, March Settlement 1957, June Settlement 1957, November Settlement 1957, Collections to First Monday in January 1958, Delinquent on First Monday in January 1958, Total Delinquent Tax and Penalty, and REMARKS. Includes handwritten entries for tax amounts and payment dates.

140-27

Emer's Shores

Brookman's Landing

Beach





Assessment Roll and Tax List of Real Property in the Town of Inelze

\* Indicate Type of Property: R-Residential, C-Commercial, I-Industrial, U-Utility, F-Farm, L-Lakeshore, T-Timber, M-Mineral

Cass County, Minnesota, for Taxes for the Year 1956.

Form 56D (5-55) UNLESS SAID OTHERWISE, UNPAID

Table with columns: IN WHOSE NAME ASSESSED, TO WHOM TRANSFERRED, SUBDIVISION, TRUE AND FULL VALUATIONS, ASSESSED VALUATIONS, FINAL EQUALIZED VALUE. Includes entries for State of Minnesota, Carl O. & Edith Peterson, Gordon G. Pastwiler, W.R. Clemens, Thomas Mc Cosker, Floyd Larson, A.C. & Petra Helleksen, Allian Berglund, Leonard Berge, Frank P. & Ann Rice, John & Patricia Lou Jacobs.

Table with columns: VALUATIONS BY SCHOOL DISTRICTS AS EQUALIZED BY DEPARTMENT OF TAXATION, Tax including State Homestead, State Tax on Non-Homestead, SPECIAL TAXES, TOTAL TAXES, PAID, WHEN PAID, Number of Receipt, March Settlement 1957, June Settlement 1957, November Settlement 1957, Collections to First Monday in January 1958, Delinquent on First Monday in January 1958, Total Delinquent Tax and Penalty, REMARKS. Includes handwritten notes like 'PAID IN FULL' and 'SOLD FOR TAXES'.

110-27

Ever's Stores, Birchwood Stores, Brookman's Leach

Assessment Roll and Tax List of Real Property in the Town of Inelipe,

Cass County, Minnesota, for Taxes for the Year 1956.

Form 561 (5-56) BELL-BAYNE COMPANY, MINNEAPOLIS  
\* Indicate Type of Property: R-Residential, C-Commercial, I-Industrial, U-Utility, F-Farm, L-Lakeshore, T-Timber, M-Mineral

Table with columns: IN WHOSE NAME ASSESSED, TO WHOM TRANSFERRED, DESCRIPTION OF PROPERTY, TRUE AND FULL VALUATIONS, ASSESSED VALUATIONS, VALUATIONS BY SCHOOL DISTRICTS AS EQUALIZED BY DEPARTMENT OF TAXATION, TAXES, PAID, WHEN PAID, March Settlement 1957, June Settlement 1957, November Settlement 1957, Collections to First Monday in January 1958, Delinquent on First Monday in January 1958, Total Delinquent Tax and Penalty, REMARKS.

Eldon R. & Martha Oberfoell  
Lewis G. & Mayme A. Wheeler  
State of Minnesota

William N. & Rose Lang  
Wm. N. & Rose Lang  
State of Minnesota

State of Minnesota

State of Minnesota

State of Minnesota

State of Minnesota

State of Minnesota

State of Minnesota

Handwritten totals at the bottom of the page: 160, 759, 100, 859, 24, 246, 210, 24, 246, 270, 622, 132, 6154, 1710, 1710, 3334.

Assessment Roll and Tax List of Real Property in the Town of Islelpe

Cass County, Minnesota, for Taxes for the Year 1956.

\* Indicate Type of Property: R-Residential, C-Commercial, I-Industrial, U-Utility, F-Farm, L-Lakeshore, T-Timber, M-Mineral

Table with columns: IN WHOSE NAME ASSESSED, TO WHOM TRANSFERRED, SUBDIVISION, TRUE AND FULL VALUATIONS, ASSESSED VALUATIONS, and FINAL EQUALIZED VALUE.

Table with columns: VALUATIONS BY SCHOOL DISTRICTS AS EQUALIZED BY DEPARTMENT OF TAXATION, TAX INCLUDING STATE HOMESTEAD, SPECIAL TAXES, TOTAL TAXES, PAID, WHEN PAID, Number of Receipt, March Settlement 1957, June Settlement 1957, November Settlement 1957, Penalty, Collections to First Monday in January 1958, Delinquent on First Monday in January 1958, Total Delinquent Tax and Penalty, REMARKS.

140-27

140-27

Birchwood Stores

Birchwood Stores

Birchwood Stores

Assessment Roll and Tax List of Real Property in the Town of Inelipe, Cass County, Minnesota, for Taxes for the Year 1956.

Table with columns: IN WHOSE NAME ASSESSED, TO WHOM TRANSFERRED, DESCRIPTION OF PROPERTY, TRUE AND FULL VALUATIONS, ASSESSED VALUATIONS, VALUATIONS BY SCHOOL DISTRICTS AS EQUALIZED BY DEPARTMENT OF TAXATION, TAX INCLUDING STATE HOMESTEAD, STATE TAX ON NON-HOMESTEAD, SPECIAL TAXES, TOTAL TAXES, PAID, WHEN PAID, Number of Receipt, March Settlement 1957, June Settlement 1957, Penalty, November Settlement 1957, Penalty, Collections to First Monday in January 1958, Penalty, Delinquent on First Monday in January 1958, Total Delinquent Tax and Penalty, REMARKS.

139-27  
140-27

Timber's Shores  
Hickwood Shores  
Brookman's Linden Beach

J.W. Farm Land Co.

Clarence Wheeler

State of Minnesota

Elmer A. Hanson

Charles Wheeler

Wesley E. & Marcen J. Carpenter

" " "

State of Minnesota

State of Minnesota

Wesley E. & Marcen J. Carpenter

State of Minnesota

N.P. Ry. Co.

State of Minnesota

Jack S. & Lorna B. Ross

N.P. Ry. Co.

State of Minnesota

Jack S. & Lorna B. Ross

State of Minnesota

State of Minnesota

PA 1/25/1958 Rec # 2982  
PA 1/24/1958 Rec # 2983

PA 1/25/1958 Rec # 2983

penalty 304

penalty due 234



Assessment Roll and Tax List of Real Property in the Town of Delphi

\* Indicate Type of Property: R-Residential, C-Commercial, I-Industrial, U-Utility, F-Farm, L-Lakeshore, T-Timber, M-Mineral

Table with columns: IN WHOSE NAME ASSESSED, TO WHOM TRANSFERRED, DESCRIPTION OF PROPERTY, TRUE AND FULL VALUATIONS, ASSESSED VALUATIONS, FINAL EQUALIZED VALUE. Includes handwritten entries for various lots and a 'SOLD FOR TAXES' entry.

Cass County, Minnesota, for Taxes for the Year 1956.

Table with columns: VALUATIONS BY SCHOOL DISTRICTS AS EQUALIZED BY DEPARTMENT OF TAXATION, SOLD FOR TAXES, SPECIAL TAXES, TOTAL TAXES, PAID, WHEN PAID, Number of Receipt, March Settlement 1957, June Settlement 1957, November Settlement 1957, Collections to First Monday in January 1958, Delinquent on First Monday in January 1958, Total Delinquent Tax and Penalty, REMARKS. Includes handwritten entries for tax amounts and a 'Forfeited' entry.



Assessment Roll and Tax List of Real Property in the Town of Indigo

Form 50 (56) - JULY-24-1954 COMPANY, MINNEAPOLIS. \* Indicate Type of Property: R-Residential, C-Commercial, I-Industrial, U-Utility, F-Farm, L-Lakeshore, T-Timber, M-Mineral

Cass County, Minnesota, for Taxes for the Year 1956.

Main table with columns: IN WHOSE NAME ASSESSED, TO WHOM TRANSFERRED, DESCRIPTION OF PROPERTY, TRUE AND FULL VALUATIONS, ASSESSED VALUATIONS, VALUATIONS BY SCHOOL DISTRICTS AS EQUALIZED BY DEPARTMENT OF TAXATION, TAXES, PAID, WHEN PAID, Number of Receipt, March Settlement 1957, June Settlement 1957, Penalty, November Settlement 1957, Collections to First Monday in January 1958, Delinquent on First Monday in January 1958, Total Delinquent Tax and Penalty, REMARKS.

139-27

140-27

Prer's Stores

Birchwood Stores

Brookman's Jaden Beach

Assessment Roll and Tax List of Real Property in the Town of Delphi

Cass County, Minnesota, for Taxes for the Year 1956.

Form 5C (56) HILLEN-BAYNE COMPANY, MINNAPOLIS

\* Indicate Type of Property: R-Residential, C-Commercial, I-Industrial, U-Utility, F-Farm, L-Lakeshore, T-Timber, M-Mineral

Table with columns for 'IN WHOSE NAME ASSESSED', 'TO WHOM TRANSFERRED', 'DESCRIPTION OF PROPERTY', 'TRUE AND FULL VALUATIONS', 'ASSESSED VALUATIONS', 'VALUATIONS BY SCHOOL DISTRICTS AS EQUALIZED BY DEPARTMENT OF TAXATION', 'TAXES', 'PAID', 'WHEN PAID', 'Number of Receipt', 'March Settlement 1957', 'June Settlement 1957', 'November Settlement 1957', 'Collections to First Monday in January 1955', 'Delinquent on First Monday in January 1955', 'Total Delinquent Tax and Penalty', 'REMARKS'.

139-27  
110-27

Ever's Shores  
Birchwood Shores  
Bookman's Binder  
Beach



Assessment Roll and Tax List of Real Property in the Town of Inelipe

Cass County, Minnesota, for Taxes for the Year 1956.

Form 50 (56) JULY-1955 COMPACT, MINNAPOLIS

Indicate Type of Property: R-Residential, C-Commercial, I-Industrial, U-Utility, F-Farm, L-Lakeshore, T-Timber, M-Mineral

Table with columns for IN WHOSE NAME ASSESSED, TO WHOM TRANSFERRED, DESCRIPTION OF PROPERTY, TRUE AND FULL VALUATIONS, ASSESSED VALUATIONS, VALUATIONS BY SCHOOL DISTRICTS AS EQUALIZED BY DEPARTMENT OF TAXATION, TAXES, PAID, WHEN PAID, and REMARKS. Includes handwritten entries for property descriptions and tax amounts.









Assessment Roll and Tax List of Real Property in the Town of Duluth

Indicate Type of Property: R-Residential, C-Commercial, I-Industrial, U-Utility, F-Farm, L-Lakeshore, T-Timber, M-Mineral

Cass County, Minnesota, for Taxes for the Year 1956.

Table with columns: IN WHOSE NAME ASSESSED, TO WHOM TRANSFERRED, DESCRIPTION OF PROPERTY, TRUE AND FULL VALUATIONS, ASSESSED VALUATIONS, VALUATIONS BY SCHOOL DISTRICTS AS EQUALIZED BY DEPARTMENT OF TAXATION, SOLD FOR TAXES, PAID, WHEN PAID, etc.

Assessment Roll and Tax List of Real Property in the Town of Incline

Indicate Type of Property: R-Residential, C-Commercial, I-Industrial, U-Utility, F-Farm, L-Lakeshore, T-Timber, M-Mineral

Form 501 (56) MILLER-DAY COMPANY, MINNEAPOLIS

Table with columns: IN WHOSE NAME ASSESSED, TO WHOM TRANSFERRED, DESCRIPTION OF PROPERTY, TRUE AND FULL VALUATIONS, ASSESSED VALUATIONS, FINAL EQUALIZED VALUE. Includes entries for B.F. Nelson & Mining & Land Co. and Hubert A.W. Kasper.

Cass County, Minnesota, for Taxes for the Year 1956.

Table with columns: VALUATIONS BY SCHOOL DISTRICTS AS EQUALIZED BY DEPARTMENT OF TAXATION, Tax including State Homestead, SPECIAL TAXES, TOTAL TAXES, PAID, WHEN PAID, Number of Receipt, March Settlement, June Settlement, November Settlement, Collections to First Monday in January 1958, Delinquent on First Monday in January 1958, Total Delinquent Tax and Penalty, REMARKS. Includes handwritten entries for payments and dates.

Assessment Roll and Tax List of Real Property in the Town of Phelps

Indicate Type of Property: R-Residential, C-Commercial, I-Industrial, U-Utility, F-Farm, L-Lakeshore, T-Timber, M-Mineral

Form 50 (56) BULLETIN BOARD COMPANY, BIRMINGHAM

Table with columns: IN WHOSE NAME ASSESSED, TO WHOM TRANSFERRED, DESCRIPTION OF PROPERTY, TRUE AND FULL VALUATIONS, ASSESSED VALUATIONS, FINAL EQUALIZED VALUE.

Cass County, Minnesota, for Taxes for the Year 1956.

Table with columns: SOLD FOR TAXES, VALUATIONS BY SCHOOL DISTRICTS AS EQUALIZED BY DEPARTMENT OF TAXATION, SPECIAL TAXES, TOTAL TAXES, PAID, WHEN PAID, Number of Receipt, March Settlement, June Settlement, November Settlement, Collections to First Monday in January, Delinquent on First Monday in January, Total Delinquent Tax and Penalty, REMARKS.

139-27  
110-27

Ever's Stores  
Birchwood Stores  
Brookman's Lumber

Assessment Roll and Tax List of Real Property in the Town of Irelape

\* Indicate Type of Property: R-Residential, C-Commercial, I-Industrial, U-Utility, F-Farm, L-Lakeshore, T-Timber, M-Mineral

Form 5C (56) MILLER-DAY COMPANY, MINNEAPOLIS

Table with columns: IN WHOSE NAME ASSESSED, TO WHOM TRANSFERRED, DESCRIPTION OF PROPERTY (Subdivision, Acres, etc.), TRUE AND FULL VALUATIONS (Land, Buildings, Machinery, etc.), ASSESSED VALUATIONS (Rural, All Other, etc.), and FINAL EQUALIZED VALUE.

Cass County, Minnesota, for Taxes for the Year 1956.

Table with columns: SOLD FOR TAXES, VALUATIONS BY SCHOOL DISTRICTS AS EQUALIZED BY DEPARTMENT OF TAXATION (District No., Rate, etc.), Tax including State Homestead, State Tax on Non-Homestead, SPECIAL TAXES, TOTAL TAXES, PAID, WHEN PAID, Number of Receipt, March Settlement 1957, June Settlement 1957, November Settlement 1957, Penalty, Collections to First Monday in January 1958, Delinquent on First Monday in January 1958, Total Delinquent Tax and Penalty, and REMARKS.

19-27 110-27

Ernie's Stores Brookwood Stores Brookman's Lumber Brookman's Beach

















Assessment Roll and Tax List of Real Property in the Town of Melrose

Indicate Type of Property: R-Residential, C-Commercial, I-Industrial, U-Utility, F-Farm, L-Lakeshore, T-Timber, M-Mineral

Form 502 (56) WISCONSIN DEPARTMENT OF REVENUE

Table with columns: IN WHOSE NAME ASSESSED, TO WHOM TRANSFERRED, DESCRIPTION OF PROPERTY, TRUE AND FULL VALUATIONS, ASSESSED VALUATIONS, and FINAL EQUALIZED VALUE. Includes entries for The Northwest Paper Co. and State of Minnesota.

Cass County, Minnesota, for Taxes for the Year 1956.

Table with columns: VALUATIONS BY SCHOOL DISTRICTS AS EQUALIZED BY DEPARTMENT OF TAXATION, Tax including State Homestead, SPECIAL TAXES, TOTAL TAXES, PAID, WHEN PAID, Number of Receipt, March Settlement 1957, June Settlement 1957, November Settlement 1957, Penalty, Collections to First Monday in January 1958, Delinquent on First Monday in January 1958, Total Delinquent Tax and Penalty, REMARKS. Includes handwritten notes and a large bracketed area.

110-27

Shores

Shores

Shores



Assessment Roll and Tax List of Real Property in the Town of Ialipe

Indicate Type of Property: R-Residential, C-Commercial, I-Industrial, U-Utility, F-Farm, L-Lakeshore, T-Timber, M-Mineral

Form 5C (50) - JULY 1954 EDITION, MINNEAPOLIS

Table with columns: IN WHOSE NAME ASSESSED, TO WHOM TRANSFERRED, DESCRIPTION OF PROPERTY, TRUE AND FULL VALUATIONS, ASSESSED VALUATIONS, and FINAL EQUALIZED VALUE. Includes handwritten entries for 'Cal Inst of Technology' and 'Thomas E. Yawkey'.

Summary row with values: 160, 792, 792, 264, 264

Cass County, Minnesota, for Taxes for the Year 1956.

Table with columns: VALUATIONS BY SCHOOL DISTRICTS AS EQUALIZED BY DEPARTMENT OF TAXATION, TAXES, PAID, WHEN PAID, Number of Receipt, March Settlement, June Settlement, November Settlement, Collections to First Monday in January, Delinquent on First Monday in January, Total Delinquent Tax and Penalty, and REMARKS. Includes handwritten tax amounts and payment dates.

Summary row with values: 264, 5888, 144, 6032, 6032

139-27

140-27

Emery's Shores

Fitchwood Shores

Brookman's Landing Beach

Assessment Roll and Tax List of Real Property in the Town of Inelipe,

\* Indicate Type of Property: R-Residential, C-Commercial, I-Industrial, U-Utility, F-Farm, L-Lakeshore, T-Timber, M-Mineral

Form 3C (56) JULY-DAY COMPANY, MINNEAPOLIS

IN WHOSE NAME ASSESSED	TO WHOM TRANSFERRED	DESCRIPTION OF PROPERTY				No. School District	Indicate Homestead Yes or No	Indicate Agricultural Yes or No	Indicate Type of Property	TRUE AND FULL VALUATIONS					ASSESSED VALUATIONS						FINAL EQUALIZED VALUE		
		SUBDIVISION	Sec. or Lot	Town or Block	Rng.					Number of Acres of Land	LAND Exclusive of Structures and Improvements	BUILDINGS and Other Structures	MACHINERY Permanently Attached to Real Estate	TOTAL True and Full Value	RURAL			ALL OTHER				TOTAL ASSESSED VALUE	Total Assessed Value as Equalized by the Board of Review
															Acres	100ths	Homestead Up to \$1,000 20%	Over \$4,000 and Non-Homestead 33 1/8%	Timber Land Class 3e 20%	Homestead Up to \$1,000 25%			
Frank & Mary Gilmer		NE 1/4 of NE 1/4	35	14027	40		UN	400	F	220	400		620	124				124					
State of Minnesota		NW 1/4 of NE 1/4																					
State of Minnesota		SW 1/4 of NE 1/4																					
State of Minnesota		SE 1/4 of NE 1/4																					
State of Minnesota		NE 1/4 of NW 1/4																					
State of Minnesota		NW 1/4 of NW 1/4																					
State of Minnesota		SW 1/4 of NW 1/4																					
State of Minnesota		SE 1/4 of NW 1/4																					
State of Minnesota		NE 1/4 of SW 1/4																					
State of Minnesota		NW 1/4 of SW 1/4																					
State of Minnesota		SW 1/4 of SW 1/4																					
State of Minnesota		SE 1/4 of SW 1/4																					
State of Minnesota		NE 1/4 of SE 1/4																					
State of Minnesota		NW 1/4 of SE 1/4																					
State of Minnesota		SW 1/4 of SE 1/4																					
Donald L. & Rose Marie Nelson		SE 1/4 of SE 1/4 less E. 20 rods of S. 16 rods.	38				UN	400	F	90			90	18			18						
William Knutson		E. 20 rods of S. 16 rods of S. 1/4 of S. 1/4	2				NO		T	18			18	6			6						
			80							328	400		728	142	6		148						

Cass County, Minnesota, for Taxes for the Year 1956.

SOLD FOR TAXES	VALUATIONS BY SCHOOL DISTRICTS AS EQUALIZED BY DEPARTMENT OF TAXATION						Tax including State Homestead	State Tax on Non-Homestead	SPECIAL TAXES	TOTAL TAXES	PAID	WHEN PAID	Number of Receipt	March Settlement 1957	June Settlement 1957	Penalty	November Settlement 1957	Penalty	Collections to First Monday in January 1958	Penalty	Delinquent on First Monday in January 1958	Total Delinquent Tax and Penalty	REMARKS	
	District No.	District No.	District No.	District No.	District No.	District No.																		
	Rate	Rate	Rate	Rate	Rate	Rate																		
1							534			2764		OCT 31 1957	16633											
2																								
3																								
4																								
5																								
6																								
7																								
8																								
9																								
10																								
11																								
12																								
13																								
14																								
15																								
16																								
17																								
18																								
19																								
20																								

Printed at the Cass County, Minnesota, Printing Plant







Assessment Roll and Tax List of Real Property in the Town of Delphi,

Indicate Type of Property: R-Residential, C-Commercial, I-Industrial, U-Utility, F-Farm, L-Lakeshore, T-Timber, M-Mineral

Form 5C (56) WALK-BAY COMPANY, MINNEAPOLIS

Table with columns: IN WHOSE NAME ASSESSED, TO WHOM TRANSFERRED, DESCRIPTION OF PROPERTY, TRUE AND FULL VALUATIONS, ASSESSED VALUATIONS, FINAL EQUALIZED VALUE. Includes handwritten entries for 'Ewer's Shores' and various property owners like 'Leroy Ewer' and 'Arthur S. & Gladys S. Parks'.

Cass County, Minnesota, for Taxes for the Year 1956.

Table with columns: SOLD FOR TAXES, VALUATIONS BY SCHOOL DISTRICTS AS EQUALIZED BY DEPARTMENT OF TAXATION, Tax including State Homestead, State Tax on Non-Homestead, SPECIAL TAXES, TOTAL TAXES, PAID, WHEN PAID, Number of Receipt, March Settlement 1957, June Settlement 1957, Penalty, November Settlement 1957, Penalty, Collections to First Monday in January 1958, Penalty, Delinquent on First Monday in January 1958, Total Delinquent Tax and Penalty, REMARKS. Includes handwritten entries for 'Ewer's Shores' and 'Brookman's Linden Beach'.

Assessment Roll and Tax List of Real Property in the Town of Icelipe,

\* Indicate Type of Property: R-Residential, C-Commercial, I-Industrial, U-Utility, F-Farm, L-Lakeshore, T-Timber, M-Mineral

Form 5C (56) MULLER-DAVIS COMPANY, MINNEAPOLIS

Table with columns for Description of Property, True and Full Valuations, Assessed Valuations, and Final Equalized Value. Rows include property owners like Archie G. & Julia E. Luley, Herbert H. & Mae J. Westphal, Clifton W. Hansen & Edward E. Hanson, Milton E. & Estelle E. Christensen, Sven J. & Signe Marie Olsen, James B. & Eula J. Waltrip, and Bernice M. Geratner.

Summary table with columns: Acres, 1000s, No. School District, Indicate Homestead, Indicate Agricultural, Indicate Type of Property, Land, Buildings, Machinery, Total True and Full Value, Rural, All Other, Machinery, Total Assessed Value, Final Equalized Value. Totals: 310, 1622, 1932, 644, 644.

Cass County, Minnesota, for Taxes for the Year 1956.

Table with columns for Sold for Taxes, Valuations by School Districts as Equalized by Department of Taxation, Tax including State Homestead, State Tax on Non-Homestead, Special Taxes, Total Taxes, PAID, WHEN PAID, Number of Receipt, March Settlement 1957, June Settlement 1957, November Settlement 1957, Penalty, Collections to First Monday in January 1958, Delinquent on First Monday in January 1958, Total Delinquent Tax and Penalty, and Remarks. Includes handwritten entries for various dates and amounts.

139-27 110-27

Emer's Shores

Birchwood Shores

Brookman's Linden Beach

Assessment Roll and Tax List of Real Property in the Town of Inelipe

Indicate Type of Property: R-Residential, C-Commercial, I-Industrial, U-Utility, F-Farm, L-Lakeshore, T-Timber, M-Mineral

Form 5C (56) MILLER-SAYRE COMPANY, MINNEAPOLIS

Table with columns: IN WHOSE NAME ASSESSED, TO WHOM TRANSFERRED, SUBDIVISION, TRUE AND FULL VALUATIONS, ASSESSED VALUATIONS, FINAL EQUALIZED VALUE. Includes handwritten entries for property owners like 'Orren & Rena Fairbanks' and 'Jason & Christine Eddy'.

Cass County, Minnesota, for Taxes for the Year 1956.

Table with columns: VALUATIONS BY SCHOOL DISTRICTS AS EQUALIZED BY DEPARTMENT OF TAXATION, Tax including State Homestead, State Tax on Non-Homestead, SPECIAL TAXES, TOTAL TAXES, PAID, WHEN PAID, Number of Receipt, March Settlement 1957, June Settlement 1957, November Settlement 1957, Collections to First Monday in January 1958, Delinquent on First Monday in January 1958, Total Delinquent Tax and Penalty, REMARKS. Includes handwritten entries for tax amounts and payment dates.

