

ASSESSMENT & TAX LIST

Trelipe

1949

List of Lands in the _____ of _____, County of _____, Minn., for the Year 19____, Which have Become Homesteads or Ceased to be Homesteads
 SINCE THE LAST REAL ESTATE ASSESSMENT DATE

Form 214 Miller-Davis Company, Minneapolis, State Form No. 67

LANDS BECOMING HOMESTEADS							LANDS CEASING TO BE HOMESTEADS						
NAME OF OWNER	School District	DESCRIPTION OF PROPERTY SUBDIVISION	Sec. or Lot	Town or Block	Range	Number of Acres of Land Acres 100ths	NAME OF OWNER	School District	DESCRIPTION OF PROPERTY SUBDIVISION	Sec. or Lot	Town or Block	Range	Number of Acres of Land Acres 100ths

Lulipe
 Township or Village

Lands Becoming Homestead Since the 1948 Real Estate Assessment

Name of Owner	Sch. Dist.	Description of Property Subdivision	Sec. or Lot	Town or Block	Range	No. of Acres
✓ <u>Louis Wheeler</u>		<u>NE of 777</u>	<u>10</u>	<u>140</u>	<u>27</u>	<u>40</u>

140-27

Beaver's Shores Birdwood Shores

List of Lands in the _____ of _____, County of _____, Minn., for the Year 19____, Which have Become Homesteads or Ceased to be Homesteads
 SINCE THE LAST REAL ESTATE ASSESSMENT DATE

Form 214 Miller-Davis Company, Minneapolis, State Form No. 67

LANDS BECOMING HOMESTEADS

LANDS CEASING TO BE HOMESTEADS

NAME OF OWNER	School District	DESCRIPTION OF PROPERTY				NAME OF OWNER	School District	DESCRIPTION OF PROPERTY			
		SUBDIVISION	Sec. or Lot	Town or Block	Range or Acres 100ths			SUBDIVISION	Sec. or Lot	Town or Block	Range or Acres 100ths

INCREASE OR DECREASE in Value of Property Heretofore Assessed, by the Erection or Destruction of Buildings or Structures Thereon

Urban Property Assessed at 40 Per Cent of True and Full Value.
 (Homesteads up to \$4,000 True and Full Value 25 Per Cent.)

Rural Property Assessed at 33 1/3 Per Cent of True and Full Value.
 (Homesteads up to \$4,000 True and Full Value 20 Per Cent.)

FORM 3 MILLER-DAVIS COMPANY, MINNEAPOLIS

NAMES OF PROPERTY OWNERS	DESCRIPTION	Sec. or Lot	Town or Block	Rng.	True and Full Value of Structures worth more than \$100 each Dollars	KIND OF STRUCTURES	Assessed Value of Additional Structures Dollars	Reduction of Assessed Value on Account of Loss occasioned by Fire, Flood or otherwise Dollars
--------------------------	-------------	-------------	---------------	------	--	--------------------	---	---

*Birch wood shores 2138 - Hwy - 10
 maps 21 - 22*

Increase or Decrease in Value of Property because of Erection or Destruction of Buildings or Structures in township or village of *Tulipe*

Names of Owners	Description	Sec. or Lot	Town or Block	Range	True & Full Value of Buildings	Kind of Building	Assessed Value of Buildings	Assessed Value of Buildings no longer on prop.
<i>J. Ver Hauberg</i>	<i>80 - 435, 900</i>	<i>2</i>	<i>140</i>		<i>27850</i>	<i>frame</i>	<i>16,500</i>	<i>50</i>
<i>Louis Heuler</i>	<i>N.E. of 77</i>	<i>10</i>	<i>140</i>	<i>27</i>	<i>100</i>			

*Chamber of Trade Hall 22-30-10
 construction of play house unfinished
 no electricity
 ✓
Tulipe
*25 \$240**

Assessment of T

NAME OF OWNER

Treasurer's Office, Cass County, Minnesota

RECEIVED this, the first Monday (being the 2nd day) of January, A. D. 1950, of L. C. Peterson, Auditor of said County, Minnesota, the Tax List of all Taxable Real and Personal Property in the Town of Felipe in said County for the year A. D. 1949, as specified above and amounting to _____ Dollars

Paul D. Jewell County Treasurer. F.M.P.

Office of County Treasurer, Cass County, Minnesota

To L. C. Peterson, County Auditor:

Sir:—I herewith return to you the Tax List for the Town of Felipe in said County for the year 1949, heretofore received from you. I certify that I have compared the same with the duplicate receipts in your office, and have written opposite the amount of each tax so receipted the words "First Quarter Paid", "Second Quarter Paid", "Third Quarter Paid" or "Paid in full" as the case may be, and the number of my receipt given in discharge of said tax, and each tract or lot of real property against which the taxes remain unpaid is delinquent for said year.

Yours respectfully, Paul D. Jewell County Treasurer.

Auditor's Office, Cass County, Minnesota

I, _____ Auditor of said County, and State of Minnesota, do hereby certify that the following is a correct list of the Taxes levied on the Real and Personal Property in the _____ of _____ for the year 1949.

WITNESS my hand and official seal, the _____ day of _____ 1950.

(SEAL) _____ County Auditor.

Auditor's Office, Cass County, Minnesota

I hereby certify that on the first Monday in January 1951, I received of _____ County Treasurer, the Tax List of the _____ of _____ in said County for the year 1949; that I have compared the said list with the Statements receipted for by said Treasurer, which are on file in my office, and that each tract or lot of real property therein against which the taxes, or any part thereof, remains unpaid are delinquent for said year.

(SEAL) _____ County Auditor.

140-27

Barthelme Stores

TABULAR SCHEDULE OF VALUATIONS,

LEVIED IN THE Town OF Trelipe

RATES AND TAXES

COUNTY OF CASS, STATE OF MINNESOTA

NAME OF OWNER

School District No.	VALUATION BY SCHOOL DISTRICTS				RATE OF COUNTY TAXES										RATE OF TOWN TAXES										RATE OF STATE TAXES	
	Agricultural Lands	Non-Agricultural Lands	Personal Property	Total Value of all Property except Money and Credits	Rev.	R. & B.	Welfare	Bonds and Int.	Total Rate of County Tax	Rev.	R. & B.	Drag Tax	State Loan	Total Rate of Town Tax	Local	Special	State Loan	Deficiency	Tuition	Transportation	C.O.	B.T.D.	Total Rate of State Tax	Mills		
1	15184	1582	2614	19380	4.11	26.7	8.9	49.9	17.8	103.3	5.	15.	1.	21.	1.	15.	43.	2.5	10.	8.			4.11	26.7		
2																										
3																										
4	3826	226		4052																						
5	12116	598	2614	15328																						
6	15942	824	2614	19380																						
7																										
8																										

SCHOOL TAXES		LOCAL 1 MILL AND SPECIAL SCHOOL TAXES BY DISTRICTS										ALL OTHER TAXES		
Total Rate of Sch'l Tax	Total Rate of all Taxes	Local 1 Mill	Special	State Loan	Deficiency	Tuition	Transportation	C.O.	B.T.D.	Total School Taxes	FUNDS	Rate	Amounts	
79.5	202.91	1518	22776	65284	3796	15184	12147			120705	State-Non-Homestead,		7006	
94.5	222.91	420	12588	18043	1049	4196	3357			39653	State-Homestead,		7965	
											County Revenue,		51740	
											County Road and Bridge,		17247	
											County Welfare,		96700	
											Bonds and Interest		34493	
											Town Revenue,		9690	
											Town Road and Bridge,		29070	
											Town Drag,		1937	
											Town State Loan,			
											School Local 1 Mill,		1738	
											School Special,		35364	
											School State Loan,			
											Deficiency		83327	
											Tuition			
											Transportation		4845	
											C.O.		19380	
											B.T.D.		15504	

Total Number of Acres 9313
 State of Minnesota,
 COUNTY OF CASS
 foregoing is a true and correct Schedule, showing the valuation of all the taxable property, in the year
 of Trelipe, in said County, the several rates of Taxation and Totals of the
 several Tax Funds levied thereon for the year A. D. 1947.
 Witness my hand and official seal, this 8 day of Dec A. D. 1947.
 L. C. Peterson
 County Auditor.

Total Taxes Real Estate 3567.40
 Pers. Prop. 254.66
 Total 4162.06

SEAL

Assessment of

Form 314 - MARCH 1934 COMPACT, MINNEAPOLIS

NAME OF OWNER

FUNDS	MARCH SETTLEMENT 19... <i>50</i>	JUNE SETTLEMENT 19... <i>50</i>	NOV. SETTLEMENT 19... <i>50</i>	Amount Collected from Nov. 19... to First Monday in Jan. 19... <i>51</i>	REDUCTIONS	Total Reductions and Collected	BALANCE UNCOLLECTED	ADDITIONS	Total Uncollected to First Monday in January, 19... <i>51</i>
State - Non-Homestead,	932	3572	849	38					
State - Homestead,	953	3812	1400	34					
County Revenue,	6189	24761	9095	219					
County Road and Bridge,	2063	8254	3032	75					
County Welfare,	11567	46277	16998	409					
County Bond and Interest,	4126	16508	6063	146					
Town Revenue,	1159	4637	1703	41					
Town Road and Bridge,	3477	13911		123					
Town Drag,	232	927	5110	88					
Town State Loan,			341						
School Local 1 Mill,	232	927	340	88					
School Special,	5835	16421	6356	123					
School State Loan,									
Deficiency	9967	39878	14647	352					
Tuition									
Transportation	579	2319	852	20					
C.O.	2318	7273	3407	82					
B.S.	1855	7420	2725	66					
	51484	198917	72918	1742					

	SCHOOL DISTRICT NO.	LOCAL 1 MILL	SPECIAL	STATE LOAN TRANSP.	DEF.	C.O.	B.S.	TOTALS
MARCH SETTLEMENT	School District No. <i>A.W.</i>	25	1119	186	3207	746	547	5930
	<i>7th.W.</i>	157	4716	343	6760	1572	1258	14856
	Totals	2.32 15088	5835	579	9967	2318	1855	20786
JUNE SETTLEMENT	School District No. <i>R.W.</i>	760	11378	1900	32678	7599	6080	60415
	<i>7th.W.</i>	167	5023	419	7200	1674	1340	15823
	Totals	927	16421	2319	37878	9273	7420	76238
NOVEMBER SETTLEMENT	School District No. <i>W.H.</i>	257	3861	644	11071	2575	2060	20468
	<i>W.H.</i>	83	2495	208	3576	832	665	7859
	Totals	340	6356	852	14647	3407	2725	28327
NOVEMBER to JANUARY	School District No. <i>Q.W.</i>	08	123	20	352	82	66	651
	Totals	08	123	20	352	82	66	651
	School District No.							
ADDITIONS	Totals							
	School District No.							
REDUCTIONS	Totals							
	School District No.							

140-27

Ever's Stores
Birdwood Stores

Assessment Roll and Tax List of Real Property in the Town of Lelipe

Form 500 MILLER-BAYNE COMPANY, MINNEAPOLIS

IN WHOSE NAME ASSESSED	TO WHOM TRANSFERRED	DESCRIPTION OF PROPERTY				TRUE AND FULL VALUATIONS				ASSESSED VALUATIONS					FINAL EQUALIZED VALUE			
		SUBDIVISION	Sec. or Lot	Town or Block	Reg.	Number of Acres of Land	LAND Exclusive of Structures and Improvements	BUILDINGS and Other Structures	MACHINERY Permanently Attached to Real Estate	TOTAL True and Full Value	RURAL		ALL OTHER			MACHINERY Permanently Attached to Real Estate	TOTAL ASSESSED VALUE	Total Assessed Value as Equalized by the Board of Review
											Acres	100ths	Homestead Up to \$4,000 20%	Over \$4,000 and Non-Homestead 33 1/3%				
State of Minnesota		NE 1/4 of NE 1/4				14 139 27												
State of Minnesota		NW 1/4 of NE 1/4																
State of Minnesota		SW 1/4 of NE 1/4																
State of Minnesota		SE 1/4 of NE 1/4																
State of Minnesota		NE 1/4 of NW 1/4																
State of Minnesota		NW 1/4 of NW 1/4																
State of Minnesota		SW 1/4 of NW 1/4																
State of Minnesota		SE 1/4 of NW 1/4																
State of Minnesota		NE 1/4 of SW 1/4																
State of Minnesota		NW 1/4 of SW 1/4																
State of Minnesota		SW 1/4 of SW 1/4																
State of Minnesota		SE 1/4 of SW 1/4																
State of Minnesota		NE 1/4 of SE 1/4																
State of Minnesota		NW 1/4 of SE 1/4																
State of Minnesota		SW 1/4 of SE 1/4																
State of Minnesota		SE 1/4 of SE 1/4																

Cass County, Minnesota, for Taxes for the Year 1949.

SOLD FOR TAXES	VALUATIONS BY SCHOOL DISTRICTS AS EQUALIZED BY DEPARTMENT OF TAXATION						Tax including State Homestead	State Tax on Non-Homestead	SPECIAL TAXES	TOTAL TAXES	PAID	WHEN PAID	Number of Receipt	March Settlement 1950	June Settlement 1950	Penalty	November Settlement 1950	Penalty	Collections to First Monday in January 1951	Penalty	Delinquent on First Monday in January 1951	Total Delinquent Tax and Penalty	REMARKS
	District No.	District No.	District No.	District No.	District No.	District No.																	
	Rate	Rate	Rate	Rate	Rate	Rate																	
1																							
2																							
3																							
4																							
5																							
6																							
7																							
8																							
9																							
10																							
11																							
12																							
13																							
14																							
15																							
16																							
17																							
18																							
19																							
20																							

139-27

140-27

Bev's Stores

Brummond Stores

Brummond's Land

Assessment Roll and Tax List of Real Property in the Lawn of Deluge

Form SCD - MILLER-BAYNE COMPANY, MINNEAPOLIS

IN WHOSE NAME ASSESSED	TO WHOM TRANSFERRED	DESCRIPTION OF PROPERTY				TRUE AND FULL VALUATIONS				ASSESSED VALUATIONS					FINAL EQUALIZED VALUE			
		SUBDIVISION	Sec. or Lot	Town or Block	Rng.	Number of Acres of Land	LAND Exclusive of Structures and Improvements	BUILDINGS and Other Structures	MACHINERY Permanently Attached to Real Estate	TOTAL True and Full Value	RURAL		ALL OTHER			MACHINERY Permanently Attached to Real Estate	TOTAL ASSESSED VALUE	Total Assessed Value as Equalized by the Board of Review
											Acres	100ths	Homestead Up to \$4,000 20%	Over \$4,000 and Non-Homestead 33 1/3%				
State of Minnesota		NE 1/4 of NE 1/4																
State of Minnesota		NW 1/4 of NE 1/4																
State of Minnesota		SW 1/4 of NE 1/4																
State of Minnesota		SE 1/4 of NE 1/4																
State of Minnesota		NE 1/4 of NW 1/4																
State of Minnesota		NW 1/4 of NW 1/4																
State of Minnesota		SW 1/4 of NW 1/4																
State of Minnesota		SE 1/4 of NW 1/4																
State of Minnesota		NE 1/4 of SW 1/4																
State of Minnesota		NW 1/4 of SW 1/4																
State of Minnesota		SW 1/4 of SW 1/4																
State of Minnesota		SE 1/4 of SW 1/4																
State of Minnesota		NE 1/4 of SE 1/4																
State of Minnesota		NW 1/4 of SE 1/4																
State of Minnesota		SW 1/4 of SE 1/4																
State of Minnesota		SE 1/4 of SE 1/4																

Cass County, Minnesota, for Taxes for the Year 1949.

SOLD FOR TAXES	VALUATIONS BY SCHOOL DISTRICTS AS EQUALIZED BY DEPARTMENT OF TAXATION						Tax including State Homestead	State Tax on Non-Homestead	SPECIAL TAXES	TOTAL TAXES	PAID	WHEN PAID	Number of Receipt	March Settlement 1950	June Settlement 1950	Penalty	November Settlement 1950	Penalty	Collections to First Monday in January 1951	Penalty	Delinquent on First Monday in January 1951	Total Delinquent Tax and Penalty	REMARKS
	District No.	District No.	District No.	District No.	District No.	District No.																	
	Rate	Rate	Rate	Rate	Rate	Rate																	

139-27

140-27

Geor's Shores Birchwood Shores

Berkman's Linden

Assessment Roll and Tax List of Real Property in the Town of Lulipe

Form 500 MILLER-BAYNE COMPANY, MINNEAPOLIS

IN WHOSE NAME ASSESSED	TO WHOM TRANSFERRED	DESCRIPTION OF PROPERTY				TRUE AND FULL VALUATIONS				ASSESSED VALUATIONS					FINAL EQUALIZED VALUE			
		SUBDIVISION	Sec. or Lot	Town or Block	Rng.	Number of Acres of Land	LAND Exclusive of Structures and Improvements	BUILDINGS and Other Structures	MACHINERY Permanently Attached to Real Estate	TOTAL True and Full Value	RURAL		ALL OTHER			MACHINERY Permanently Attached to Real Estate	TOTAL ASSESSED VALUE	Total Assessed Value as Equalized by the Board of Review
											Acres	100ths	Homestead Up to \$4,000 20%	Over \$4,000 and Non-Homestead 33 1/3%				
State of Minnesota		NE 1/4 of NE 1/4	25	139	27													
State of Minnesota		NW 1/4 of NE 1/4																
State of Minnesota		SW 1/4 of NE 1/4																
State of Minnesota		SE 1/4 of NE 1/4																
State of Minnesota		NE 1/4 of NW 1/4																
State of Minnesota		NW 1/4 of NW 1/4																
State of Minnesota		SW 1/4 of NW 1/4																
State of Minnesota		SE 1/4 of NW 1/4																
State of Minnesota		NE 1/4 of SW 1/4																
State of Minnesota		NW 1/4 of SW 1/4																
State of Minnesota		SW 1/4 of SW 1/4																
State of Minnesota		SE 1/4 of SW 1/4																
State of Minnesota		NE 1/4 of SE 1/4																
State of Minnesota		NW 1/4 of SE 1/4																
State of Minnesota		SW 1/4 of SE 1/4																
State of Minnesota		SE 1/4 of SE 1/4																

Cass County, Minnesota, for Taxes for the Year 1949.

SOLD FOR TAXES	VALUATIONS BY SCHOOL DISTRICTS AS EQUALIZED BY DEPARTMENT OF TAXATION						Tax including State Homestead	State Tax on Non-Homestead	SPECIAL TAXES	TOTAL TAXES	PAID	WHEN PAID	Number of Receipt	March Settlement 1950	June Settlement 1950	Penalty	November Settlement 1950	Penalty	Collections to First Monday in January 1951	Penalty	Delinquent on First Monday in January 1951	Total Delinquent Tax and Penalty	REMARKS	
	District No.	District No.	District No.	District No.	District No.	District No.																		
	Rate	Rate	Rate	Rate	Rate	Rate																		
1																								
2																								
3																								
4																								
5																								
6																								
7																								
8																								
9																								
10																								
11																								
12																								
13																								
14																								
15																								
16																								
17																								
18																								
19																								
20																								

140-27

Shores Birchwood Shores

Shores Linden

Assessment Roll and Tax List of Real Property in the town of Deluge

Form 300 - MILLER-BAYNE COMPANY, MINNEAPOLIS

IN WHOSE NAME ASSESSED	TO WHOM TRANSFERRED	DESCRIPTION OF PROPERTY				TRUE AND FULL VALUATIONS										FINAL EQUALIZED VALUE		
		SUBDIVISION	Sec. or Lot	Town or Block	Rng.	Number of Acres of Land	LAND Exclusive of Structures and Improvements	BUILDINGS and Other Structures	MACHINERY Permanently Attached to Real Estate	TOTAL True and Full Value	RURAL		ALL OTHER		MACHINERY Permanently Attached to Real Estate		TOTAL ASSESSED VALUE	Total Assessed Value as Equalized by the Board of Review
											Acres	100ths	Homestead Up to \$4,000 20%	Over \$4,000 and Non-Homestead 33 1/3%				
State of Minnesota		1	NE 1/4 of NE 1/4	29 139 27														
State of Minnesota		2	NW 1/4 of NE 1/4															
State of Minnesota		3	SW 1/4 of NE 1/4															
State of Minnesota		4	SE 1/4 of NE 1/4															
		5																
State of Minnesota		6	NE 1/4 of NW 1/4															
State of Minnesota		7	NW 1/4 of NW 1/4															
State of Minnesota		8	SW 1/4 of NW 1/4															
State of Minnesota		9	SE 1/4 of NW 1/4															
		10																
State of Minnesota		11	NE 1/4 of SW 1/4															
State of Minnesota		12	NW 1/4 of SW 1/4															
State of Minnesota		13	SW 1/4 of SW 1/4															
State of Minnesota		14	SE 1/4 of SW 1/4															
		15																
State of Minnesota		16	NE 1/4 of SE 1/4															
State of Minnesota		17	NW 1/4 of SE 1/4															
State of Minnesota		18	SW 1/4 of SE 1/4															
State of Minnesota		19	SE 1/4 of SE 1/4															
		20																

Cass County, Minnesota, for Taxes for the Year 1949.

SOLD FOR TAXES	VALUATIONS BY SCHOOL DISTRICTS AS EQUALIZED BY DEPARTMENT OF TAXATION						Tax including State Homestead	State Tax on Non-Homestead	SPECIAL TAXES	TOTAL TAXES	PAID	WHEN PAID	Number of Receipt	March Settlement 1950	June Settlement 1950	Penalty	November Settlement 1950	Penalty	Collections to First Monday in January 1951	Penalty	Delinquent on First Monday in January 1951	Total Delinquent Tax and Penalty	REMARKS
	District No.	District No.	District No.	District No.	District No.	District No.																	
	Rate	Rate	Rate	Rate	Rate	Rate																	
1																							
2																							
3																							
4																							
5																							
6																							
7																							
8																							
9																							
10																							
11																							
12																							
13																							
14																							
15																							
16																							
17																							
18																							
19																							
20																							

140-27

Swart's Stores Birchwood Stores

Brookman's Lumber

Assessment Roll and Tax List of Real Property in the Lawn of Delice

Form 500 - MILLER-BAYNE COMPANY, MINNEAPOLIS

IN WHOSE NAME ASSESSED	TO WHOM TRANSFERRED	DESCRIPTION OF PROPERTY				No. School District	Indicate Homestead Yes or No	Indicate Agricultural Yes or No	TRUE AND FULL VALUATIONS					ASSESSED VALUATIONS					FINAL EQUALIZED VALUE	
		SUBDIVISION	Sec. or Lot	Town or Block	Rng.				Number of Acres of Land	LAND Exclusive of Structures and Improvements	BUILDINGS and Other Structures	MACHINERY Permanently Attached to Real Estate	RURAL		ALL OTHER		MACHINERY Permanently Attached to Real Estate	TOTAL ASSESSED VALUE		Total Assessed Value as Equalized by the Board of Review
													Acres	100ths	Homestead Up to \$4,000 20%	Over \$4,000 and Non-Homestead 33 1/3%				
Jacob & Agnes Woodley		NE 1/4 of NE 1/4				5 140 27	36 99	Yes												
Douglas J. & Ann B. Hoffsten		NW 1/4 of NE 1/4				Lot 2 less 1 ac less S. 470'	39	No												
Arthur J. & Marion K. Gustafson		SW 1/4 of NE 1/4				Lot 5	43 15	Yes												
Jacob & Agnes Woodley		SE 1/4 of NE 1/4					40	No												
E. W. Raymond et al						Com. at a pt. on the N. line of Gov't Lot 2, 234' N. 21 3/4' E. 176', thence S. 25' E. 216' along E. line of original Sec. 36, thence S. 76' E. 217' along E. line of original Sec. 36, thence S. 200' E. 4' to place of pt.	1	No												
Roland Edwards		NW 1/4 of NW 1/4				Lot 3	4	Yes												
		SW 1/4 of NW 1/4																		
		SE 1/4 of NW 1/4																		
Arthur J. & Marion K. Gustafson						S. 470' of Lot 2														
		NE 1/4 of SW 1/4																		
		NW 1/4 of SW 1/4																		
		SW 1/4 of SW 1/4																		
		SE 1/4 of SW 1/4																		
State of Minnesota (cont. to Louis Bondeman)		NE 1/4 of SE 1/4					40	Yes												
Arthur Larson & B. E. Tolson		NW 1/4 of SE 1/4				Lot 6	41 25	No												
Milton E. & Estelle E. Christison		SW 1/4 of SE 1/4				Lot 7 less 300' x 100' Area of N. 330'	47 25	No												
		SE 1/4 of SE 1/4					40	No												
Arthur C. & Mabel J. Nelson						100' x 330' 300' x 100' of Lot 7														
							33 264													

Continued on next page

Cass County, Minnesota, for Taxes for the Year 1949.

SOLD FOR TAXES	VALUATIONS BY SCHOOL DISTRICTS AS EQUALIZED BY DEPARTMENT OF TAXATION						Tax including State Homestead	State Tax on Non-Homestead	SPECIAL TAXES	TOTAL TAXES	PAID	WHEN PAID	Number of Receipt	March Settlement 1950	June Settlement 1950	Penalty	November Settlement 1950	Penalty	Collections to First Monday in January 1951	Penalty	Delinquent on First Monday in January 1951	Total Delinquent Tax and Penalty	REMARKS		
	District No.	District No.	District No.	District No.	District No.	District No.																			
	Rate	Rate	Rate	Rate	Rate	Rate																			
1	21	45	21	60	21	50	936	408	936	1 PAID IN FULL	SEP 1 2 1950	12172													
2							2452	22	2474	2 PAID IN FULL	MAY 26 1950	6686		2474											
3	21	36					748		748	3 PAID IN FULL	MAY 26 1950	6686		748											
4	21	40					832		832	4 PAID IN FULL	SEP 1 2 1950	12172													
5		51					1060	24	1084	5 PAID IN FULL	MAY 6 1950	5577		1084											
6																									
7			21	13	21	133	2362	16	2378	7														2378	2616
8																									
9																									
10																									
11																									
12																									
13																									
14																									
15																									
16			21	46			456		456	16 PAID IN FULL	FEB 1 6 1950	1958		956											
17				66			1372	30	1402	17 PAID IN FULL	MAY 3 1 1950	9565		1402											
18					119	Cont for line 20	2652	54	2706	18 PAID IN FULL	MAY 2 3 1950	7647		2706											
19				60			1248	28	1276	19 PAID IN FULL	MAY 2 3 1950	7648		1276											
20			21	167	21	133	7152	174	7466	20				956	5780									2378	
				177		302																			
				344		335																			

Ever's Shores Birchwood Shores Beckman's Linden

Assessment Roll Tax List of Real Property in Lot 4 Sec. 5-140-27

FORM 501 - WILCO-SAYRE COMPANY, MINNEAPOLIS

IN WHOSE NAME ASSESSED TO WHOM TRANSFERRED

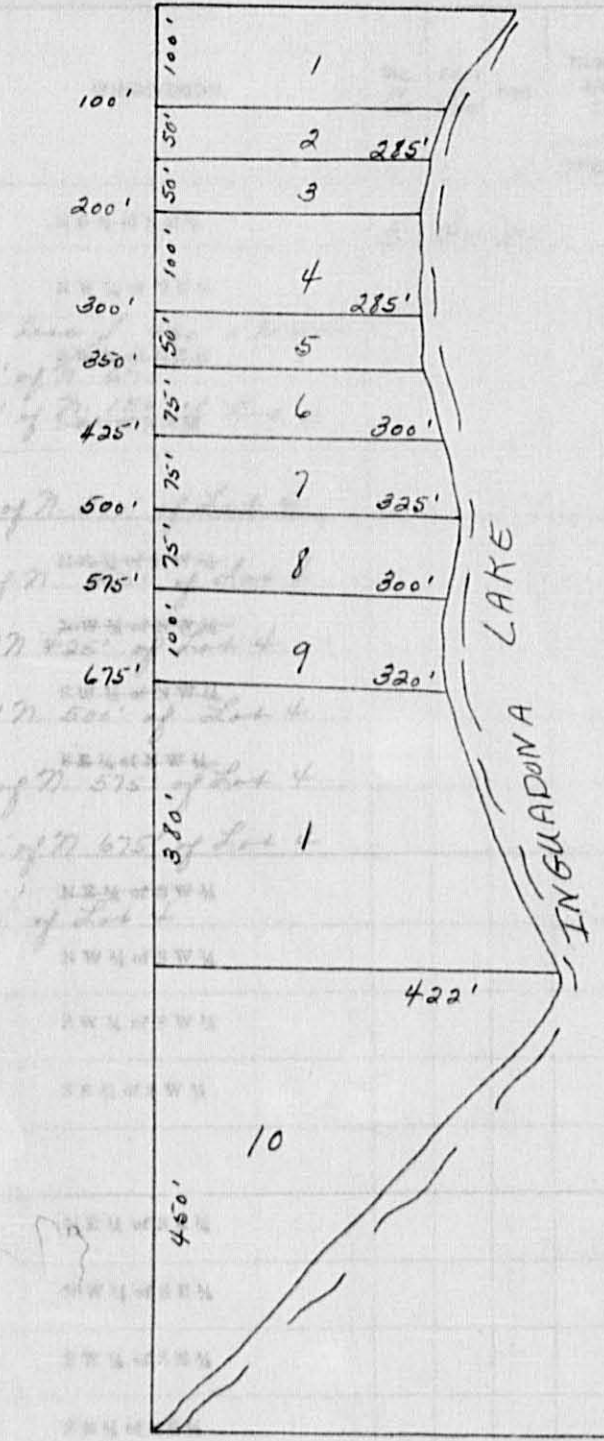
DESCRIPTION OF PROPERTY

TRUE AND FULL

ASSESSED VALUATIONS

ALL OTHER	MACHINERY	TOTAL ASSESSED VALUE	Total Assessed Value as Equalized by the Board of Review	FINAL EQUALIZED VALUE
Dollars	Dollars	Dollars	Dollars	Dollars
Homestead Up to \$4,000 25%	Over \$4,000 and Non-Homestead 40%	Permanently Attached to Real Estate 33 1/3%		

- 1. Roland Edwards 6.0 ac.
- 2. Clara + Elizabeth Strenak .75 ac.
- 3. " " .25 ac.
- 4. Guy Wm. + Belle Thompson .50 ac.
- 5. " " .25 ac.
- 6. Russell E. Southworth .50 ac.
- 7. Jerome + Dorothy E. Workman 1.0 ac.
- 8. Charles La Grath " .50 ac.
- 9. Marvin Olson + Iris Larson .75 ac.
- 10. Byron Sherwood 2.00 ac.
- Total 12.50 ac.



Roland Edwards
 Clara + Elizabeth M. Strenak
 Guy Wm. + Belle Thompson
 Russell E. Southworth
 Jerome + Dorothy E. Workman
 Charles "La Grath"
 Marvin Olson + Iris Larson
 Byron Sherwood + Irma Sherwood

1250

Cass County, Minnesota, for Taxes for the Year 1949.

SOLD FOR TAXES	VALUATIONS BY SCHOOL DISTRICTS AS EQUALIZED BY DEPARTMENT OF TAXATION						Tax including State Homestead	State Tax on Non-Homestead	SPECIAL TAXES	TOTAL TAXES	PAID	WHEN PAID	Number of Receipt	March Settlement 1950	June Settlement 1950	Penalty	November Settlement 1950	Penalty	Collections to First Monday in January 1951	Penalty	Delinquent on First Monday in January 1951	Total Delinquent Tax and Penalty	REMARKS
	District No. 222	District No. 222	District No. 222	District No. 222	District No. 222	District No. 222																	
	Rate 9.1 Mills	Rate 9.1 Mills	Rate 9.1 Mills	Rate 9.1 Mills	Rate 9.1 Mills	Rate 9.1 Mills		4.58 Mills															
1																							
2																							
3	218								1.66		166											166 y 183	
4	18								374	08	382		PAID IN FULL MAY 31 1950	9595								382	
5	35								728	16	744		PAID IN FULL MAY 31 1950	9595								744	
6	57								1186	26	1212		PAID IN FULL MAY 25 1950	6954								1212	
7	48								998	22	1020		PAID IN FULL MAY 10 1950	6007								1020	
8	48								998	22	1020		PAID IN FULL JAN 21 1950	382		1020						382	
9	15								312	06	318		PAID IN FULL JAN 21 1950	383		318						318	
10	15								312	06	318		PAID IN FULL MAY 26 1950	6687								318	
11									2184	44	2228		PAID IN FULL MAY 12 1950	7338								2228	
12																							
13																							
14																							
15																							
16																							
17																							
18																							
19																							
20																							
	118								5074	180	7408											166	
	236								2184					1338	2228							3676	
	244																						

Beer's Shores Barwood Shores Birkman's Linden

Assessment Roll and Tax List of Real Property in the Town of Delice

Cass County, Minnesota, for Taxes for the Year 1949.

Form 500 - MINN. STATE DEPT. OF REVENUE

IN WHOSE NAME ASSESSED	TO WHOM TRANSFERRED	DESCRIPTION OF PROPERTY				TRUE AND FULL VALUATIONS										FINAL EQUALIZED VALUE						
		Subdivision	Sec. of Lot	Town or Block	Rng.	Number of Acres of Land	No. School District	Indicate Homestead Yes or No	Indicate Agricultural Yes or No	LAND Exclusive of Structures and Improvements		BUILDINGS and Other Structures	MACHINERY Permanently Attached to Real Estate	TOTAL True and Full Value	RURAL		ALL OTHER		MACHINERY Permanently Attached to Real Estate	TOTAL ASSESSED VALUE	Total Assessed Value as Equalized by the Board of Review	
										Acres	100ths	Dollars	Dollars	Dollars	Dollars		Dollars	Dollars	Dollars	Dollars	Dollars	Dollars
State of Minnesota		NE 1/4 of NE 1/4	28	140	27	20																
State of Minnesota		NW 1/4 of NE 1/4																				
The Northwest Paper Co.		SW 1/4 of NE 1/4				40		No														
"		SE 1/4 of NE 1/4				40		"														
"		NE 1/4 of NW 1/4				40		"														
"		NW 1/4 of NW 1/4				40		"														
"		SW 1/4 of NW 1/4				40		"														
"		SE 1/4 of NW 1/4				40		"														
"		NE 1/4 of SW 1/4				40		"														
State of Minnesota		NW 1/4 of SW 1/4																				
State of Minnesota		SW 1/4 of SW 1/4																				
State of Minnesota		SE 1/4 of SW 1/4																				
The Northwest Paper Co.		NE 1/4 of SE 1/4				40		"														
"		NW 1/4 of SE 1/4				40		"														
State of Minnesota		SW 1/4 of SE 1/4																				
State of Minnesota		SE 1/4 of SE 1/4																				
						360																

SOLD FOR TAXES	VALUATIONS BY SCHOOL DISTRICTS AS EQUALIZED BY DEPARTMENT OF TAXATION						Tax including State Homestead	State Tax on Non-Homestead	SPECIAL TAXES	TOTAL TAXES	PAID	WHEN PAID	Number of Receipt	March Settlement 1950	June Settlement 1950	Penalty	November Settlement 1950	Penalty	Collections to First Monday in January 1951	Penalty	Delinquent on First Monday in January 1951	Total Delinquent Tax and Penalty	REMARKS
	District No.	District No.	District No.	District No.	District No.	District No.																	
	Rate	Rate	Rate	Rate	Rate	Rate																	
	202																						
	66						1372	30		1402		3 PAID IN FULL MAY 2 2 1950	6454			1402							
	66						1372	30		1402		4 PAID IN FULL MAY 2 2 1950	6454			1402							
	66						1372	30		1402		6 PAID IN FULL MAY 2 2 1950				1402							
	66						1372	30		1402		7 PAID IN FULL MAY 2 2 1950	6454			1402							
	66						1372	30		1402		8 PAID IN FULL MAY 2 2 1950				1402							
	66						1372	30		1402		9 PAID IN FULL MAY 2 2 1950				1402							
	66						1372	30		1402		11 PAID IN FULL MAY 2 2 1950	6454			1402							
	66						1372	30		1402		17 PAID IN FULL MAY 2 2 1950	6454			1402							
	594						12348	270		12618						12618							

Ever's Stores Birchwood Stores

Boonman's Lumber

Assessment Roll and Tax List of Real Property in the town of Deluge

Form SCD - MILLER-BAYNE COMPANY, MINNEAPOLIS

IN WHOSE NAME ASSESSED	TO WHOM TRANSFERRED	DESCRIPTION OF PROPERTY				No. School District	Indicate Homestead Yes or No	Indicate Agricultural Yes or No	TRUE AND FULL VALUATIONS					ASSESSED VALUATIONS					FINAL EQUALIZED VALUE		
		SUBDIVISION	Sec. or Lot	Town or Block	Rng.				Number of Acres of Land	LAND Exclusive of Structures and Improvements	BUILDINGS and Other Structures	MACHINERY Permanently Attached to Real Estate	TOTAL True and Full Value	RURAL		ALL OTHER		MACHINERY Permanently Attached to Real Estate 33 1/3%		TOTAL ASSESSED VALUE	Total Assessed Value as Equalized by the Board of Review
														Acres	100ths	Homestead Up to \$4,000 20%	Over \$4,000 and Non-Homestead 33 1/3%				
Thomas A. Jewkey 3/4 Int., Emma A. Gardner 1/4 Int.		NE 1/4 of NE 1/4	34	140	27	40	20	No													
"	"	NW 1/4 of NE 1/4				40	"														
"	"	SW 1/4 of NE 1/4				40	"														
"	"	SE 1/4 of NE 1/4				40	"														
State of Minnesota		NE 1/4 of NW 1/4																			
State of Minnesota		NW 1/4 of NW 1/4																			
State of Minnesota		SW 1/4 of NW 1/4																			
State of Minnesota		SE 1/4 of NW 1/4																			
State of Minnesota		NE 1/4 of SW 1/4																			
State of Minnesota		NW 1/4 of SW 1/4																			
State of Minnesota		SW 1/4 of SW 1/4																			
State of Minnesota		SE 1/4 of SW 1/4																			
State of Minnesota		NE 1/4 of SE 1/4																			
State of Minnesota		NW 1/4 of SE 1/4																			
State of Minnesota		SW 1/4 of SE 1/4																			
State of Minnesota		SE 1/4 of SE 1/4																			

160

SOLD FOR TAXES	VALUATIONS BY SCHOOL DISTRICTS AS EQUALIZED BY DEPARTMENT OF TAXATION						Tax including State Homestead	State Tax on Non-Homestead 4.5%	SPECIAL TAXES	TOTAL TAXES	PAID	WHEN PAID	Number of Receipt	March Settlement 1950	June Settlement 1950	Penalty 1950	November Settlement 1950	Penalty 1950	Collections to First Monday in January 1951	Penalty 1951	Delinquent on First Monday in January 1951	Total Delinquent Tax and Penalty	REMARKS
	District No.	District No.	District No.	District No.	District No.	District No.																	
	Rate	Rate	Rate	Rate	Rate	Rate																	
1	207						1372	30	1402	1	2nd Half Paid MAR 21 1950	3832		701									
2	207						1372	30	1402	2	1st Half Paid MAR 22 1950	3434		701									
3	207						1372	30	1402	3	2nd Half Paid MAR 21 1950	3832		701									
4	207						1372	30	1402	4	1st Half Paid MAR 22 1950	3434		701									
5										5													
6										6													
7										7													
8										8													
9										9													
10										10													
11										11													
12										12													
13										13													
14										14													
15										15													
16										16													
17										17													
18										18													
19										19													
20										20													

264

5488 120

5608

5608

Ernest's Shores Birchwood Shores Brakeman's Linden

Assessment Roll and Tax List of Real Property in the Town of Deluge

Form 50 WILCOX-BAYNE COMPANY, MINNEAPOLIS

IN WHOSE NAME ASSESSED	TO WHOM TRANSFERRED	DESCRIPTION OF PROPERTY				TRUE AND FULL VALUATIONS				ASSESSED VALUATIONS					FINAL EQUALIZED VALUE Dollars		
		Sec. or Lot	Town or Block	Rng.	Number of Acres of Land Acres 100ths	LAND Exclusive of Structures and Improvements Dollars	BUILDINGS and Other Structures Dollars	MACHINERY Permanently Attached to Real Estate Dollars	TOTAL True and Full Value Dollars	RURAL		ALL OTHER		MACHINERY Permanently Attached to Real Estate Dollars		TOTAL ASSESSED VALUE Dollars	Total Assessed Value as Equalized by the Board of Review Dollars
										Homestead Up to \$4,000 20%	Over \$4,000 and Non-Homestead 33 1/3%	Homestead Up to \$4,000 25%	Over \$4,000 and Non-Homestead 40%				
		SUBDIVISION															
			Brookman's Linden Beach (Part of Lot 4 Sec. 8-140-27)														
Roy C. + Marie C. Brookman	Allison I. Berglund	1															
Roy C. + Marie C. Brookman		2															
"	"	3															
"	"	4															
"	"	5															
"	"	6															
"	"	7															
"	"	8															
"	"	9															
			Acrelot A														

SOLD FOR TAXES	VALUATIONS BY SCHOOL DISTRICTS AS EQUALIZED BY DEPARTMENT OF TAXATION						Tax including State Homestead Mills	State Tax on Non-Homestead Mills	SPECIAL TAXES	TOTAL TAXES	PAID	WHEN PAID	Number of Receipt	March Settlement 1950	June Settlement 1950	Penalty	November Settlement 1950	Penalty	Collections to First Monday in January 1951	Penalty	Delinquent on First Monday in January 1951	Total Delinquent Tax and Penalty	REMARKS
	District No. Rate Mills	District No. Rate Mills	District No. Rate Mills	District No. Rate Mills	District No. Rate Mills	District No. Rate Mills																	
1	60					1248	28		1276	1	PAID IN FULL	AUG 2	1950										
2	60					1248	28		1276	2	PAID IN FULL	AUG 3	1950										
3	10					208	04		212	3	PAID IN FULL	AUG 3	1950										
4	10					208	04		212	4	PAID IN FULL	AUG 3	1950										
5	10					208	04		212	5	PAID IN FULL	AUG 3	1950										
6	10					208	04		212	6	PAID IN FULL	AUG 3	1950										
7	60					1248	28		1276	7	PAID IN FULL	AUG 3	1950										
8	60					1248	28		1276	8	PAID IN FULL	AUG 3	1950										
9	10					208	04		212	9													
10																							
11	Page Total 290						6032	132		6164													
12																							
13																							
14																							
15																							
16																							
17																							
18																							
19																							
20																							

Grand Totals: 71.4

3186.72
35262
350934 5806

11807

5952 124

212 233

5952

212