

ASSESSMENT & TAX LIST

Trelipe
1948.

SUMMARY OF TAX COLLECTION

Original Levy	- - - - -	\$ 5199.84
Additions	- - - - -	\$ _____
CANCELLATIONS		
	- - - - -	\$ 1297.34
Abatements	- - - - -	\$ 6.40
	- - - - -	\$ 3896.10

COLLECTIONS

March Settlement	- - - - -	\$ 557.44
June Settlement	- - - - -	\$ 1977.34
November Settlement	- - - - -	\$ 524.85
January Settlement	- - - - -	\$ 132.00
	- - - - -	\$ 3191.63
Over Collected	- - - - -	\$ _____
Under Collected	- - - - -	\$ _____
Delinquent	- - - - -	\$ 704.47
Total	- - - - -	\$ 3896.10

REAL
140-27

Treasurer's Office, Cass County, Minnesota

RECEIVED this, the first Monday (being the 3rd day) of January, A. D. 1949, of L. C. Peterson, Auditor of said County, Minnesota, the Tax List of all Taxable Real and Personal Property in the Town of Trelice of Trelice in said County for the year A. D. 1948, as specified above and amounting to 100 Dollars

Paul D. Jewell
County Treasurer.

Auditor's Office, Cass County, Minnesota

I, _____ Auditor of said County, and State of Minnesota, do hereby certify that the following is a correct list of the Taxes levied on the Real and Personal Property in the _____ of _____ for the year 1948.

WITNESS my hand and official seal, the _____ day of _____ 1949.

(SEAL) _____ County Auditor.

Office of County Treasurer, Cass County, Minnesota

To L. C. Peterson, County Auditor:

January 2 1950
Sir: I herewith return to you the Tax List for the Town of Trelice in said County for the year 1948, heretofore received from you. I certify that I have compared the same with the duplicate receipts in your office, and have written opposite the amount of each tax so receipted the words "First Quarter Paid", "Second Quarter Paid", "Third Quarter Paid" or "Paid in full" as the case may be, and the number of my receipt given in discharge of said tax, and each tract or lot of real property against which the taxes remain unpaid is delinquent for said year.

Yours respectfully,
Paul D. Jewell
County Treasurer.

Auditor's Office, Cass County, Minnesota

_____ 194
I hereby certify that on the first Monday in January 1950, I received of _____ County Treasurer, the Tax List of the _____ of _____ in said County for the year 1948; that I have compared the said list with the Statements receipted for by said Treasurer, which are on file in my office, and that each tract or lot of real property therein against which the taxes, or any part thereof, remains unpaid are delinquent for said year.

(SEAL) _____ County Auditor.

TABULAR SCHEDULE OF VALUATIONS,
LEVIED IN THE Township of Ireliga OF Ireliga

RATES AND TAXES
COUNTY OF CASS, STATE OF MINNESOTA

School District No.	VALUATION BY SCHOOL DISTRICTS				RATE OF STATE TAXES	RATE OF COUNTY TAXES					RATE OF TOWN TAXES										RATE OF			
	Agricultural Lands	Non-Agricultural Lands	Personal Property	Total Value of all Property except Money and Credits	Total Rate of State Tax	Rev.	R. & B.	Welfare	Bonds and Int.	Total Rate of County Tax	Rev.	R. & B.	Drag Tax	State Loan	Total Rate of Town Tax	Local	Special	State Loan	Deficiency	Tuition	Transportation	B+L	C.O.	
Un	Dollars	Dollars	Dollars	Dollars	Mills	Mills	Mills	Mills	Mills	Mills	Mills	Mills	Mills	Mills	Mills	Mills	Mills	Mills	Mills	Mills	Mills	Mills	Mills	Mills
	21,113	1,722	2,440	25,275	H. 2.91	23.4	7.2	48.5	7.9	6.5	93.5	5.	15.	1.	21.	1.	15.	40.	1.8	147	10.			
					N. H. 3.86																			
					6.77																			

Assessed Value	Rural	All Other	Personal Property	Total
Homestead	3888	226		4114
Non-Homestead	18,123	598	2440	21,161
Total	22,011	824	2440	25,275

SCHOOL TAXES	LOCAL 1 MILL AND SPECIAL SCHOOL TAXES BY DISTRICTS										ALL OTHER TAXES		
	Total Rate of Sch'l Tax	Total Rate of all Taxes	Local 1 Mill	Special	State Loan	Local 1 Mill	Special	State Loan	FUNDS	Rate	Amounts		
	825	99.91	212	31685	84474	3802	31044	21117	174234				
	97.5	21491	416	12500	16658	749	6122	4166	40611				
			2528	44185	101132	4551	37166	25283	214845				

Total Taxes Real Estate 4666.04
Pers. Prop. 533.80
Total 5199.84

Total Levy, \$ 5199.84
Total Number of Acres 13,014
State of Minnesota, }
COUNTY OF CASS }
Auditor of said County and State aforesaid, do hereby certify that the foregoing is a true and correct Schedule, showing the valuation of all the taxable property, in the Township of Ireliga, in said County, the several rates of Taxation and Totals of the several Tax Funds levied thereon for the year A. D. 1948.
Witness my hand and official seal, this 13 day of Dec A. D. 1948.

J. L. Peterson
County Auditor

SEAL

J. L. Peterson
County Auditor

371.59
507.58
524

199.91
33.86
203.77

11.72

REAL

140-27

Assessment Roll and Tax List of Real Property in the Town of Duluth of Duluth

Cass County, Minnesota, for Taxes for the Year 1948.

139-27

IN WHOSE NAME ASSESSED	TO WHOM TRANSFERRED	DESCRIPTION OF PROPERTY				TRUE AND FULL VALUATIONS				ASSESSED VALUATIONS					FINAL EQUALIZED VALUE			
		SUBDIVISION	Sec. or Lot	Town or Block	Rng.	Number of Acres of Land	LAND Exclusive of Structures and Improvements	BUILDINGS and Other Structures	MACHINERY Permanently Attached to Real Estate	TOTAL True and Full Value	RURAL		ALL OTHER			MACHINERY Permanently Attached to Real Estate	TOTAL ASSESSED VALUE	Total Assessed Value as Equalized by the Board of Review
											Acres	100ths	Homestead Up to \$4,000 20%	Over \$4,000 and Non-Homestead 33 1/3%				
		NE 1/4 of NE 1/4																
		NW 1/4 of NE 1/4																
State of Minnesota		SW 1/4 of NE 1/4 Lot 4																
<i>H. V. Juncoski - Clyde S. Parker</i>		SE 1/4 of NE 1/4 Lot 5				42.93	70	230	100	330	110		110					
State of Minnesota		NE 1/4 of NW 1/4 Lot 3																
State of Minnesota	<i>Clifton Nelson</i>	NW 1/4 of NW 1/4 Lot 2				41.31	"	180		180	60		60					
<i>Clifton Nelson</i>		SW 1/4 of NW 1/4				40	"	180		180	60		60					
State of Minnesota		SE 1/4 of NW 1/4																
State of Minnesota		NE 1/4 of SW 1/4																
State of Minnesota		NW 1/4 of SW 1/4																
State of Minnesota		SW 1/4 of SW 1/4																
State of Minnesota		SE 1/4 of SW 1/4																
State of Minnesota		NE 1/4 of SE 1/4																
State of Minnesota		NW 1/4 of SE 1/4																
State of Minnesota		SW 1/4 of SE 1/4																
<i>Thomas J. Scott</i>		SE 1/4 of SE 1/4 Lot 6				21.36	70	114		114	38		38					
						145.60		704	100	804	268		268					

SOLD FOR TAXES	VALUATIONS BY SCHOOL DISTRICTS AS EQUALIZED BY DEPARTMENT OF TAXATION						Tax including State Homestead	State Tax on Non-Homestead	SPECIAL TAXES	TOTAL TAXES	PAID	WHEN PAID	Number of Receipt	March Settlement 1949	June Settlement 1949	Penalty 1949	November Settlement 1949	Penalty 1949	Collections to First Monday in January 1950	Penalty 1950	Delinquent on First Monday in January 1950	Total Delinquent Tax and Penalty	REMARKS
	District No.	District No.	District No.	District No.	District No.	District No.																	
	Rate	Rate	Rate	Rate	Rate	Rate																	

Assessment Roll and Tax List of Real Property in the Town of Inelipe of Lawson

Form 50 D, JULY 1947, MINNAPOLIS

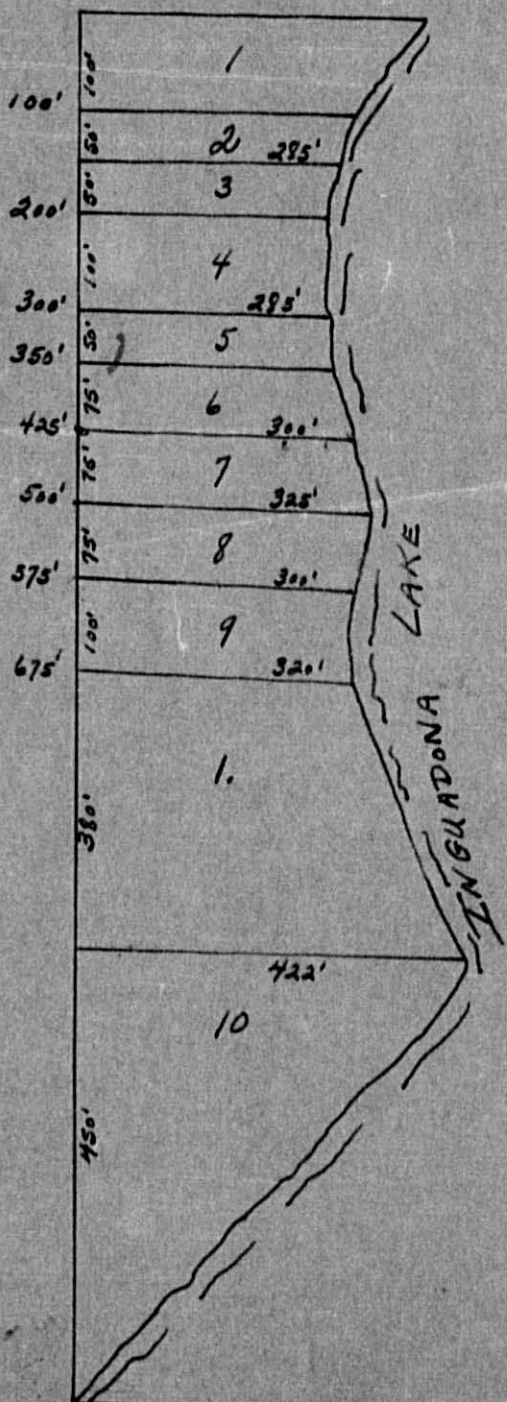
IN WHOSE NAME ASSESSED	TO WHOM TRANSFERRED	DESCRIPTION OF PROPERTY				No. School District	Indicate Homestead Yes or No	Indicate Agricultural Yes or No	TRUE AND FULL VALUATIONS				ASSESSED VALUATIONS					FINAL EQUALIZED VALUE			
		SUBDIVISION	Sec. or Lot	Town or Block	Rng.				Number of Acres of Land	LAND Exclusive of Structures and Improvements	BUILDINGS and Other Structures	MACHINERY Permanently Attached to Real Estate	TOTAL True and Full Value	RURAL		ALL OTHER			MACHINERY Permanently Attached to Real Estate	TOTAL ASSESSED VALUE	Total Assessed Value as Equalized by the Board of Review
														Acres 100ths	Homestead Up to \$4,000 20%	Over \$4,000 and Non-Homestead 33 1/3%	Homestead Up to \$4,000 25%				
State of Minnesota		NE 1/4 of NE 1/4				Lot 1	12 139 27	Un													
State of Minnesota		SW 1/4 of NE 1/4																			
State of Minnesota		SW 1/4 of NE 1/4																			
State of Minnesota		SE 1/4 of NE 1/4																			
Edward H. + Angeline Tokantz		NE 1/4 of NW 1/4				20	16		81		81		27		27						
Eva B. Nelson		NW 1/4 of NW 1/4				40	76		175		175		35		35						
"		SW 1/4 of NW 1/4				40	"		220		220		44		44						
State of Minnesota		SE 1/4 of NW 1/4																			
State of Minnesota		NE 1/4 of SW 1/4																			
Eva B. Nelson		NW 1/4 of SW 1/4				40	"		165		165		33		33						
State of Minnesota		SW 1/4 of SW 1/4																			
Glacier Park Hotel Co.		SE 1/4 of SW 1/4				40	76		198		198		66		66						
State of Minnesota		NE 1/4 of SE 1/4																			
State of Minnesota		NW 1/4 of SE 1/4																			
Moneta Improvement Co.		SW 1/4 of SE 1/4				40	"		198		198		66		66						
State of Minnesota		SE 1/4 of SE 1/4																			
						220			1037		1037		112 159		271						

Cass County, Minnesota, for Taxes for the Year 1948.

SOLD FOR TAXES	VALUATIONS BY SCHOOL DISTRICTS AS EQUALIZED BY DEPARTMENT OF TAXATION						Tax including State Homestead	State Tax on Non-Homestead	SPECIAL TAXES	TOTAL TAXES	PAID	WHEN PAID	Number of Receipt	March Settlement 1949	June Settlement 1949	Penalty	November Settlement 1949	Penalty	Collections to First Monday in January 1950	Penalty	Delinquent on First Monday in January 1950	Total Delinquent Tax and Penalty	REMARKS
	District No.	District No.	District No.	District No.	District No.	District No.																	
	Rate	Rate	Rate	Rate	Rate	Rate																	
1																							
2																							
3																							
4																							
5																							
6																							
7																							
8																							
9																							
10																							
11																							
12																							
13																							
14																							
15																							
16																							
17																							
18																							
19																							
20																							

140-27

Lot 4- Sec. 5-140-27



1. Roland Edwards	6.0 ac.
2. L. M. Achatz	.75 ac.
3. Hal Lansing	.25 ac.
4. Guy Wm. & Bella Thompson	.50 ac.
5. " " "	.25 ac.
6. Russell E. Suchworth	.50 ac.
7. Jerome Benson	1. ac.
8. Charles La Troch	.50 ac.
9. Verner Gustafson	.75 ac.
10. Byron Sherwood	2.00 ac.
Total	12.50 ac.

