

ASSESSMENT & TAX LIST

Trelpe

1951

Assessment of

NAME OF OWNER

1
2
3
4
5
6
7
8

Treasurer's Office, Cass County, Minnesota

RECEIVED this, the first Monday (being the 1st day) of January, A. D. 1952, of L. C. Peterson, Auditor of said County, Minnesota, the Tax List of all Taxable Real and Personal Property in the Town of Delpe in said County for the year A. D. 1951, as specified above and amounting to _____ Dollars

Paul D. Jewell by 7.M.P.
County Treasurer.

Auditor's Office, Cass County, Minnesota

I, _____ Auditor of said County, and State of Minnesota, do hereby certify that the following is a correct list of the Taxes levied on the Real and Personal Property in the _____ of _____ for the year 1951.

WITNESS my hand and official seal, the _____ day of _____ 1952.

(SEAL) _____ County Auditor.

Office of County Treasurer, Cass County, Minnesota

To L. C. Peterson, County Auditor:

Sir:—I herewith return to you the Tax List for the Town of Delpe in said County for the year 1951, heretofore received from you. I certify that I have compared the same with the duplicate receipts in your office, and have written opposite the amount of each tax so received the words "First Quarter Paid", "Second Quarter Paid", "Third Quarter Paid" or "Paid in full" as the case may be, and the number of my receipt given in discharge of said tax, and each tract or lot of real property against which the taxes remain unpaid is delinquent for said year.

Yours respectfully,
Paul D. Jewell by 7.M.P.
County Treasurer.

Auditor's Office, Cass County, Minnesota

I hereby certify that on the first Monday in January 1952, I received of _____ 195____ County Treasurer, the Tax List of the _____ of _____ in said County for the year 1951; that I have compared the said list with the Statements received for by said Treasurer, which are on file in my office, and that each tract or lot of real property therein against which the taxes, or any part thereof, remains unpaid are delinquent for said year.

(SEAL) _____ County Auditor.

Jan 5, 1952

Real

110-27

Shores

Shores

Shores

COLLECTIONS OF TAXES OF 1952

OF CASS COUNTY, MINNESOTA

Assessment of

NAME OF OWNER

1

2

3

4

5

6

7

8

FUNDS	MARCH SETTLEMENT 1952	JUNE SETTLEMENT 1952	NOV. SETTLEMENT 1952	Amount Collected from Nov. 1951 to First Monday in Jan. 1952	REDUCTIONS	Total Reductions and Collected	BALANCE UNCOLLECTED	ADDITIONS	Total Uncollected to First Monday in January, 1952
State - Non-Homestead,	720	2214	720	52					
State - Homestead,	1280	7840	1968	733					
County Revenue,	7114	26902	10909	737					
County Road and Bridge,	3739	14139	5733	387					
County Welfare,	1600	43888	17796	1203					
County Bond and Interest,	4492	16986	6888	465					
Town Revenue,	1298	4909	1991	135					
Town Road and Bridge,	3875	17728	5972	404					
Town Drag,	260	782	399	27					
Town State Loan,									
School Local 1 Mill,	259	982	399	27					
School Special,	9736	22752	11512	536					
School State Loan,									
Deficiency	11684	44183	17916	1211					
Tuition									
Transportation	778	2945	1195	81					
C.O.	2594	9818	3781	269					
B. & L.	1278	4929	1991	135					
	60753	25177	89364	5802					

	LOCAL 1 MILL	SPECIAL	STATE LOAN	Transp	Def.	C.O.	B. & L.	TOTALS
MARCH SETTLEMENT								
School District No. <i>Qu-Uu</i>	77	950	142	2137	475	237		3988
<i>Ha-Uu</i>	212	8486	636	9547	2121	1861		22063
Totals	289	9436	778	11684	2596	1298		26051
JUNE SETTLEMENT								
School District No. <i>Qu-Uu</i>	826	16523	2478	37177	8261	4131		69396
<i>Ha-Uu</i>	156	6229	767	1006	1557	778		16193
Totals	982	22752	2945	44183	9818	4909		85599
NOVEMBER SETTLEMENT								
School District No. <i>Qu-Uu</i>	221	4411	662	9925	2205	1103		18527
<i>Ha-Uu</i>	277	7161	533	9991	1776	989		18467
Totals	399	11512	1195	17916	3981	1991		36994
NOVEMBER to JANUARY								
School District No. <i>Qu-Uu</i>	27	536	81	1211	269	135		2259
Totals	27	536	81	1211	269	135		2259
ADDITIONS								
School District No.								
Totals								
REDUCTIONS								
School District No.								
Totals								

Real

140-27

Shores

Richwood Shores

140-27

Assessment Roll and Tax List of Real Property in the Town of Deluge of Deluge

Form 300

IN WHOSE NAME ASSESSED	TO WHOM TRANSFERRED	DESCRIPTION OF PROPERTY				TRUE AND FULL VALUATIONS							ASSESSED VALUATIONS					FINAL EQUALIZED VALUE
		SUBDIVISION	Sec. or Lot	Town or Block	Rng.	Number of Acres of Land	LAND Excludes of Structures and Improvements	BUILDINGS and Other Structures	MACHINERY Permanently Attached to Real Estate	TOTAL True and Full Value	RURAL		ALL OTHER		MACHINERY Permanently Attached to Real Estate	TOTAL ASSESSED VALUE	Total Assessed Value as Equalized by the Board of Review	
											Acres	100ths	Homestead Up to \$4,000 20%	Over \$4,000 and Non-Homestead 33 1/3%				
State of Minnesota		1				NE 1/4 of NE 1/4												
State of Minnesota		2				NW 1/4 of NE 1/4												
State of Minnesota		3				SW 1/4 of NE 1/4												
State of Minnesota		4				SE 1/4 of NE 1/4												
State of Minnesota		5																
State of Minnesota		6				NE 1/4 of NW 1/4												
State of Minnesota		7				NW 1/4 of NW 1/4												
State of Minnesota		8				SW 1/4 of NW 1/4												
State of Minnesota		9				SE 1/4 of NW 1/4												
State of Minnesota		10																
State of Minnesota		11				NE 1/4 of SW 1/4												
State of Minnesota		12				NW 1/4 of SW 1/4												
State of Minnesota		13				SW 1/4 of SW 1/4												
State of Minnesota		14				SE 1/4 of SW 1/4												
State of Minnesota		15																
State of Minnesota		16				NE 1/4 of SE 1/4												
State of Minnesota		17				NW 1/4 of SE 1/4												
State of Minnesota		18				SW 1/4 of SE 1/4												
State of Minnesota		19				SE 1/4 of SE 1/4												
State of Minnesota		20																

Cass County, Minnesota, for Taxes for the Year 1951.

SOLD FOR TAXES	VALUATIONS BY SCHOOL DISTRICTS AS EQUALIZED BY DEPARTMENT OF TAXATION						Tax including State Homestead	State Tax on Non-Homestead	SPECIAL TAXES	TOTAL TAXES	PAID	WHEN PAID	Number of Receipt	March Settlement 1951	June Settlement 1951	Penalty	November Settlement 1951	Penalty	Collections to First Monday in January 1952	Penalty	Delinquent on First Monday in January 1952	Total Delinquent Tax and Penalty	REMARKS
	District No.	District No.	District No.	District No.	District No.	District No.																	
	Rate	Rate	Rate	Rate	Rate	Rate																	
1																							
2																							
3																							
4																							
5																							
6																							
7																							
8																							
9																							
10																							
11																							
12																							
13																							
14																							
15																							
16																							
17																							
18																							
19																							
20																							

110-27

Shores

Shores

Shores

Assessment Roll and Tax List of Real Property in the Town of Delphi

Form 500 (1949-50) MINN. STAT. ANN. § 509.01

IN WHOSE NAME ASSESSED	TO WHOM TRANSFERRED	DESCRIPTION OF PROPERTY				TRUE AND FULL VALUATIONS				ASSESSED VALUATIONS					FINAL EQUALIZED VALUE			
		SUBDIVISION	Sec. or Lot	Town or Block	Rng.	Number of Acres of Land	LAND Exclusive of Structures and Improvements	BUILDINGS and Other Structures	MACHINERY Permanently Attached to Real Estate	TOTAL True and Full Value	RURAL		ALL OTHER			MACHINERY Permanently Attached to Real Estate	TOTAL ASSESSED VALUE	Total Assessed Value as Equalized by the Board of Review
											Acres 100th	Homestead Up to \$4,000 20%	Over \$4,000 and Non-Homestead 33 1/3%	Homestead Up to \$4,000 25%				
State of Minnesota		NE 1/4 of NE 1/4																
State of Minnesota		NW 1/4 of NE 1/4																
State of Minnesota		SW 1/4 of NE 1/4																
State of Minnesota		SE 1/4 of NE 1/4																
State of Minnesota		NE 1/4 of NW 1/4																
State of Minnesota		NW 1/4 of NW 1/4																
State of Minnesota		SW 1/4 of NW 1/4																
State of Minnesota		SE 1/4 of NW 1/4																
State of Minnesota		NE 1/4 of SW 1/4																
State of Minnesota		NW 1/4 of SW 1/4																
State of Minnesota		SW 1/4 of SW 1/4																
State of Minnesota		SE 1/4 of SW 1/4																
State of Minnesota		NE 1/4 of SE 1/4																
State of Minnesota		NW 1/4 of SE 1/4																
State of Minnesota		SW 1/4 of SE 1/4																
State of Minnesota		SE 1/4 of SE 1/4																

Cass County, Minnesota, for Taxes for the Year 1951.

SOLD FOR TAXES	VALUATIONS BY SCHOOL DISTRICTS AS EQUALIZED BY DEPARTMENT OF TAXATION						Tax including State Homestead	State Tax on Non-Homestead	SPECIAL TAXES	TOTAL TAXES	PAID	WHEN PAID	Number of Receipt	March Settlement 1951	June Settlement 1951	Penalty	November Settlement 1951	Penalty	Collections to First Monday in January 1952	Penalty	Delinquent on First Monday in January 1952	Total Delinquent Tax and Penalty	REMARKS
	District No.	District No.	District No.	District No.	District No.	District No.																	
	Rate	Rate	Rate	Rate	Rate	Rate																	
1																							
2																							
3																							
4																							
5																							
6																							
7																							
8																							
9																							
10																							
11																							
12																							
13																							
14																							
15																							
16																							
17																							
18																							
19																							
20																							

110-27

Deane's Shores

Hilrohm Shores

Rockman's Linden Beach

Assessment Roll and Tax List of Real Property in the Town of Duluth of Duluth

IN WHOSE NAME ASSESSED	TO WHOM TRANSFERRED	DESCRIPTION OF PROPERTY				TRUE AND FULL VALUATIONS				ASSESSED VALUATIONS					FINAL EQUALIZED VALUE			
		SUBDIVISION	Sec. or Lot	Town or Block	Rag.	Number of Acres of Land	LAND Exclusive of Structures and Improvements	BUILDINGS and Other Structures	MACHINERY Permanently Attached to Real Estate	TOTAL True and Full Value	RURAL		ALL OTHER			MACHINERY Permanently Attached to Real Estate	TOTAL ASSESSED VALUE	Total Assessed Value as Equalized by the Board of Review
											Acres	Mills	Homestead Up to \$4,000 20%	Over \$4,000 and Non-Homestead 33 1/3%				
State of Minnesota		NE 1/4 of NE 1/4		30 139 27														
State of Minnesota		NW 1/4 of NE 1/4																
State of Minnesota		SW 1/4 of NE 1/4																
State of Minnesota		SE 1/4 of NE 1/4																
State of Minnesota		NE 1/4 of NW 1/4																
State of Minnesota		NW 1/4 of NW 1/4																
State of Minnesota		SW 1/4 of NW 1/4																
State of Minnesota		SE 1/4 of NW 1/4																
State of Minnesota		NE 1/4 of SW 1/4																
State of Minnesota		NW 1/4 of SW 1/4																
State of Minnesota		SW 1/4 of SW 1/4																
State of Minnesota		SE 1/4 of SW 1/4																
State of Minnesota		NE 1/4 of SE 1/4																
State of Minnesota		NW 1/4 of SE 1/4																
State of Minnesota		SW 1/4 of SE 1/4																
State of Minnesota		SE 1/4 of SE 1/4																

Cass County, Minnesota, for Taxes for the Year 1951.

SOLD FOR TAXES	VALUATIONS BY SCHOOL DISTRICTS AS EQUALIZED BY DEPARTMENT OF TAXATION						Tax including State Homestead	State Tax on Non-Homestead	SPECIAL TAXES	TOTAL TAXES	PAID	WHEN PAID	Number of Receipt	March Settlement 1952	June Settlement 1952	Penalty 1952	November Settlement 1952	Penalty 1952	Collections to First Monday in January 1953	Penalty	Delinquent on First Monday in January 1953	Total Delinquent Tax and Penalty	REMARKS
	District No.	District No.	District No.	District No.	District No.	District No.																	
	Rate	Rate	Rate	Rate	Rate	Rate																	
1																							
2																							
3																							
4																							
5																							
6																							
7																							
8																							
9																							
10																							
11																							
12																							
13																							
14																							
15																							
16																							
17																							
18																							
19																							
20																							

110-27

Dwight's Stores Birchwood Stores

Robert's Lumber Beach

Assessment Roll and Tax List of Real Property in the Town of Duluth of Duluth

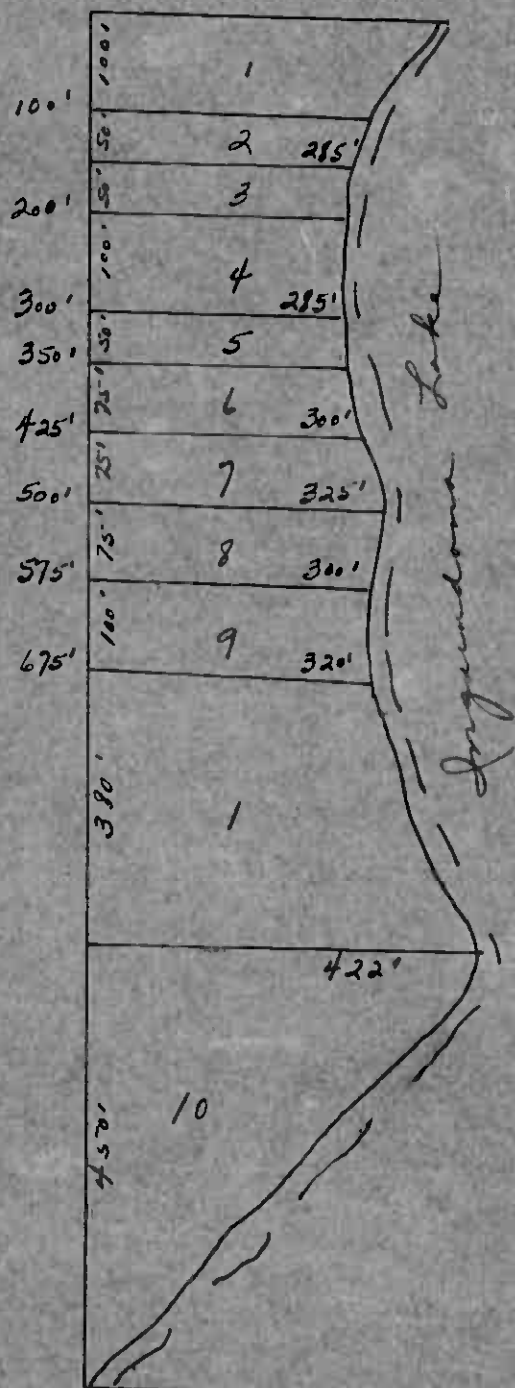
Cass County, Minnesota, for Taxes for the Year 1951.

IN WHOSE NAME ASSESSED	TO WHOM TRANSFERRED	DESCRIPTION OF PROPERTY				TRUE AND FULL VALUATIONS					ASSESSED VALUATIONS					FINAL EQUALIZED VALUE	SOLD FOR TAXES	VALUATIONS BY SCHOOL DISTRICTS AS EQUALIZED BY DEPARTMENT OF TAXATION						SPECIAL TAXES	TOTAL TAXES	PAID	WHEN PAID	Number of Receipt	March Settlement 1952	June Settlement 1952	Penalty	November Settlement 1952	Penalty	Collections to First Monday in January 1953	Penalty	Delinquent on First Monday in January 1953	Total Delinquent Tax and Penalty	REMARKS					
		SUBDIVISION	Sec. of Lot	Town or Block	Reg.	Number of Acres of Land	LAND Exclusive of Structures and Improvements	BUILDINGS and Other Structures	MACHINERY Permanently Attached to Real Estate	TOTAL True and Full Value	RURAL		ALL OTHER		MACHINERY Permanently Attached to Real Estate			TOTAL ASSESSED VALUE	Total Assessed Value as Equalized by the Board of Review	District No.	District No.	District No.	District No.																District No.	District No.	Tax including State Homestead	State Tax on Non-Homestead	
											Acres	100ths	Homestead Up to \$4,000 20%	Over \$4,000 and Non-Homestead 33 1/3%																													Homestead Up to \$4,000 25%
John & Muriel Wheeler		N 1/4 of N 1/4 Lot 1	314	27	3139	20																854	12	866	1	PAID IN FULL MAY 27 1952	6618	866															
State of Minnesota		N W 1/4 of N 1/4 Lot 2																							2																		
State of Minnesota		S W 1/4 of N 1/4																							3																		
John Wheeler		S 1/4 of N 1/4			40																				4																		
State of Minnesota																									5																		
State of Minnesota		N 1/4 of N W 1/4 Lot 3																							6																		
State of Minnesota		N W 1/4 of N W 1/4 Lot 4																							7																		
State of Minnesota		S W 1/4 of N W 1/4																							8																		
State of Minnesota		S 1/4 of N W 1/4																							9																		
State of Minnesota																									10																		
State of Minnesota		N 1/4 of S W 1/4																							11																		
State of Minnesota		N W 1/4 of S W 1/4																							12																		
State of Minnesota		S W 1/4 of S W 1/4																							13																		
State of Minnesota		S 1/4 of S W 1/4																							14																		
State of Minnesota																									15																		
State of Minnesota		N 1/4 of S 1/4																							16																		
State of Minnesota		N W 1/4 of S 1/4																							17																		
State of Minnesota		S W 1/4 of S 1/4																							18																		
M. L. Whigman		S 1/4 of S 1/4			40																				19		PAID IN FULL MAY 9 1952	1192	1192														
																									20																		

110-27

Ever's Shores Birchwood Shores Woodman's Jordan Beach

Lot 4 Sec. 5-14-27



1. Roland Edwards 6.0 ac.
2. Clarence + Elizabeth Strenak .75 ac.
3. " " " .25 ac.
4. Guy W. + Belle Thompson .50 ac.
5. " " " .25 ac.
6. ~~Olson + Marie Jorgensen~~
Russell + Southworth .50 ac.
7. Jesse L. + Dorothy E. Workman 1.0 ac.
8. " " " .50 ac.
9. Marvin Olson + Irene Larsen .75 ac.
10. Byron Sherwood 2.00 ac.



