

Assessment & Tax List - 1963

Torrey

REAL PROPERTY BECOMING SUBJECT TO TAXATION SINCE THE LAST PREVIOUS ASSESSMENT OR OMITTED FROM ASSESSMENT ROLLS THE PREVIOUS YEARS.
 Assessment of Taxable Real Property in the _____ of _____, County of _____, Minn., for the Year 19____.
 * Indicate Type of Property: R-Residential, C-Commercial, I-Industrial, U-Utility, F-Farm, L-Lakeshore, T-Timber, M-Mineral

NAME OF OWNER	School District	DESCRIPTION OF PROPERTY					Number of Acres of Land	Indicate Homestead Yes or No	Indicate Agricultural Yes or No	Indicate Type of Property	By Whom Valued	TRUE AND FULL VALUATIONS				ASSESSED VALUATIONS					FINAL EQUALIZED VALUE				
		Subdivision	Sec. or Lot	Twp. or Block	Rng.	Acres						LAND Exclusive of Structures and Improvements	BUILDINGS and Other Structures	MACHINERY Permanently Attached to Real Estate	TOTAL True and Full Value	RURAL		ALL OTHER		MACHINERY Permanently Attached to Real Estate		TOTAL ASSESSED VALUE			
											Dollars	Dollars	Dollars	Dollars	Homestead Up to \$4,000 20%	Over \$4,000 and Non-Homestead 33 1/2 %	Homestead Up to \$4,000 25%	Over \$4,000 and Non-Homestead 40%	Dollars	Dollars					
1										State															
										County															
										Local Bd.															
										Assessor															
2										State															
										County															
										Local Bd.															
										Assessor															
3										State															
										County															
										Local Bd.															
										Assessor															
4										State															
										County															
										Local Bd.															
										Assessor															
5										State															
										County															
										Local Bd.															
										Assessor															
6										State															
										County															
										Local Bd.															
										Assessor															
7										State															
										County															
										Local Bd.															
										Assessor															
8										State															
										County															
										Local Bd.															
										Assessor															

Total No. of Acres _____
 Total Value as Equalized by _____
 Total Value as Assessed by _____

SUMMARY OF TAX COLLECTION

Original Levy	\$ 6246.16
Additions	\$ _____
Abatements	\$ 35.48
	\$ 6210.68

COLLECTIONS

March Settlement	\$ 1300.00
June Settlement	\$ 2946.57
November Settlement	\$ 113.75
January Settlement	\$ 230.58
Over Collected	\$ 33.76
Under Collected	\$ _____
Delinquent	\$ 653.24
Total	\$ 6210.68

Real Estate

1-3-25

MINISTER'S VERIFICATION AND RETURN

Personal

Assessment of T

COLLECTIONS OF TAXES OF 196 OF CASS COUNTY, MINNESOTA

FUNDS	MARCH SETTLEMENT 1964	JUNE SETTLEMENT 1964	NOV. SETTLEMENT 1964	Amount Collected from Nov. 1964 to First Monday in January, 1965	REDUCTIONS	Total Reductions and Collected	BALANCE UNCOLLECTED	ADDITIONS	Total Uncollected to First Monday in January, 1965
State-Non-Homestead	3738	7557	2020	726					
State-Homestead	4217	9253	3383	610					
County Revenue	14814	35682	2965	2751					
County Road and Bridge	9403	22648	8227	1746					
County Welfare	27979	67389	24487	5196					
County Bond and Interest	983	2174	790	168					
Co. House	414	997	362	77					
PERA	2431	5854	2127	452					
Co. Expenses	35	204	74	16					
Town Revenue	1298	3125	1136	241					
Town Road and Bridge	3796	9626	3497	742					
Town State Loan									
School Local 1 Mill									
School Special	33247	56689	29653	4774					
School State Loan									
Deficiency	14295	55700	11245	4014					
Tuition									
Transportation									
Bea	1243	1870	1300	167					
PERA	995	1499	1042	129					
Bea 1956	4647	7000	4864	602					
Bea 1960	2574	3876	2644	353					
C.H. Bea	940	2265	803	175					
Agri. Assn.	226	544	198	42					
Swamp	555	1335	486	83					
	130000	294687	111375	19058					

	School District No.	LOCAL 1 MILL	SPECIAL	BEA STATE LOAN	Bea	PERA	Bea 1956	Bea 1960	TOTALS
MARCH SETTLEMENT	317 una una		24867 671 7789	2413 13882	1243	995	4647	2574	34326 3084 21541
	Totals		33247	16295	1243	995	4647	2574	59001
JUNE SETTLEMENT	317 una una		34853 11362 7874	40920 14180	1870	1499	7000	3876	51698 52282 22054
	Totals		56689	55100	1870	1499	7000	3876	126034
NOVEMBER SETTLEMENT	317 una una		26028 2619 1006	4433 1812	1300	1042	4864	2644	35928 12052 2818
	Totals		29653	11245	1300	1042	4864	2644	50798
NOVEMBER to JANUARY	317 una una		3200 676 378	2435 1579	161	109	602	333	4445 311 2457
	Totals		4774	4014	161	109	602	333	11013
ADDITIONS									
	Totals								
REDUCTIONS									
	Totals								

Real Estate

1A-25

MANISTER S. ADAMS

MINNESOTA

Assessment Roll and Tax List of Real Property in the Town of Jorrey

Form SCD WILSON-DAVIS CO. MINNEAPOLIS

* Indicate Type of Property: R-Residential, C-Commercial, I-Industrial, U-Utility, F-Farm, L-Lakeshore, T-Timber, M-Mineral

Cass County, Minnesota, for Taxes for the Year 1963.

Real Estate

10-3

IN WHOSE NAME ASSESSED	DESCRIPTION OF PROPERTY				No. School District	Indicate Homestead Yes or No	Agricultural Here Yes or No	Indicate Type of Property	TRUE AND FULL VALUATIONS		ASSESSED VALUATIONS								Total Assessed Value as Equalized by the Board of Review	FINAL EQUALIZED VALUE
	SUBDIVISION	Sec. or Lot	Town or Block	Number of Acres of Land Acres 100ths					LAND Exclusive of Structures and Improvements	BUILDINGS and Other Structures	MACHINERY Permanently Attached to Real Estate	TOTAL True and Full Value	RURAL		ALL OTHER					
1	N 1/4 of N 1/4	1	143 25	317																
2	N 1/4 of N 1/4																			
3	S 1/4 of N 1/4																			
4	S 1/4 of N 1/4																			
5																				
6	N 1/4 of NW 1/4																			
7	NW 1/4 of NW 1/4																			
8	SW 1/4 of NW 1/4																			
9	SE 1/4 of NW 1/4																			
10																				
11	N 1/4 of SW 1/4																			
12	NW 1/4 of SW 1/4																			
13	SW 1/4 of SW 1/4																			
14	SE 1/4 of SW 1/4																			
15																				
16	N 1/4 of SE 1/4																			
17	NW 1/4 of SE 1/4																			
18	SW 1/4 of SE 1/4																			
19	SE 1/4 of SE 1/4																			
20																				

SOLD FOR TAXES	VALUATIONS BY SCHOOL DISTRICTS AS EQUALIZED BY DEPARTMENT OF TAXATION						Tax Including State Homestead	State Tax on Non-Homestead	SPECIAL TAXES	SPECIAL TAXES	TOTAL TAXES	PAID	WHEN PAID	Number of Receipt	March Settlement 1964	June Settlement 1964	Penalty	November Settlement 1964	Penalty	Collections to First Monday in January 1965	Penalty	Delinquent on First Monday in January 1965	Total Delinquent Tax and Penalty	REMARKS
	District No. Rate Mills	District No. Rate Mills	District No. Rate Mills	District No. Rate Mills	District No. Rate Mills	District No. Rate Mills																		
1																								
2																								
3																								
4																								
5																								
6																								
7																								
8																								
9																								
10																								
11																								
12																								
13																								
14																								
15																								
16																								
17																								
18																								
19																								
20																								

PANISTER'S REPLICATION

PERSONAL

Assessment Roll and Tax List of Real Property in the Town of Joway of County Cass, Minnesota

* Indicate Type of Property: R-Residential, C-Commercial, I-Industrial, U-Utility, F-Farm, L-Lakeshore, T-Timber, M-Mineral

Cass County, Minnesota, for Taxes for the Year 1963.

IN WHOSE NAME ASSESSED	DESCRIPTION OF PROPERTY						TRUE AND FULL VALUATIONS										SOLD FOR TAXES					
	SUBDIVISION	Sec. or Lot	Town or Block	Number of Acres of Land	No. School District	Indicate Homestead Yes or No	Agricultural Use Yes or No	* Indicate Type of Property	LAND AND FULL VALUATIONS				ASSESSED VALUATIONS									
									LAND Exclusive of Structures and Improvements	BUILDINGS and Other Structures	MACHINERY Permanently Attached to Real Estate	TOTAL True and Full Value	RURAL					ALL OTHER		TOTAL ASSESSED VALUE	Total Assessed Value as Equalized by the Board of Review	FINAL EQUALIZED VALUE
													Homestead Up to \$4,000 20%	Over \$4,000 and Non-Homestead 33 1/3%	Timber Land Class Se 20%	Homestead Up to \$4,000 25%		Over \$4,000 and Non-Homestead 40%	33 1/3%			
Williams + Betty Simmerman	GOVT LOT 1 less sold	3	14325	40 42 317	485	40	F															
Williams Louis + Betty Simmerman	GOVT LOT 2			4125	"	"	T															
Joseph E. + Lottie Severson	S W 1/4 N 1/4			40	"	"	"															
Leonard + Eileen Prochaska	GOVT LOT 1	5 part		1	no	no	T															
Ned + Arlene Severson	GOVT LOT 3			41 08	"	485	F															
U. S. of America	GOVT LOT 4			40 90	"	"	"															
Ned + Arlene Severson	S W 1/4 N 1/4			40	no	485	T															
Ned + Arlene Severson	N E 1/4 S W 1/4			40	no	485	T															
U. S. of America	N W 1/4 S W 1/4																					
Joseph E. + Lottie Severson	S E 1/4 S W 1/4			40	485	485	F															
Joseph E. + Lottie Severson	N E 1/4 S E 1/4			40	485	485	F															
"	N W 1/4 S E 1/4			40	"	"	T															
"	S W 1/4 S E 1/4			40	"	"	F															
"	S E 1/4 S E 1/4			40	"	"	"															

SOLD FOR TAXES	VALUATIONS BY SCHOOL DISTRICTS AS EQUALIZED BY DEPARTMENT OF TAXATION						Tax Including State Homestead	State Tax on Non-Homestead	SPECIAL TAXES	SPECIAL TAXES	TOTAL TAXES	PAID	WHEN PAID	Number of Receipt	March Settlement 1964	June Settlement 1964	Penalty	November Settlement 1964	Penalty	Collections in First Monday in January 1965	Penalty	Delinquent on First Monday in January 1965	Total Delinquent Tax and Penalty	REMARKS		
	District No.	District No.	District No.	District No.	District No.	District No.																				
	Rate	Rate	Rate	Rate	Rate	Rate																				
	Dollars	Dollars	Dollars	Dollars	Dollars	Dollars																				
1	317	317	317	317	317	16 98	8.92			16 98	2074	2074	1	2nd HALF PAID MAR 11 1964												
2	55	55	55	55	55	15 56				15 56			2	1st HALF PAID MAR 1 1964 2nd HALF PAID MAR 1 1964								396 Abated	13107			
3	40	40	40	40	40	11 32				11 32			3	PAID IN FULL FEB 21 1964		18 25		14 97								
4	191	191	191	191	191	54 06				54 06			4	PAID IN FULL FEB 21 1964									13106			
5	8	8	8	8	8	226				234			5	PAID IN FULL MAY 29 1964												
6	234	234	234	234	234	57 74				59 56			6	2nd HALF PAID OCT 28 1964 1st HALF PAID MAY 15 1964										14339		
7	84	84	84	84	84	23 78				24 52			7	2nd HALF PAID OCT 28 1964 1st HALF PAID MAY 15 1964										13025		
8													8													
9	101	101	101	101	101	28 58				29 48			9	2nd HALF PAID OCT 28 1964 1st HALF PAID MAY 15 1964											13105	
10													10													
11	53	53	53	53	53	15 00				15 48			11	2nd HALF PAID OCT 28 1964 1st HALF PAID MAY 15 1964												13105
12													12													
13													13													
14	64	64	64	64	64	18 12				18 12			14	PAID IN FULL FEB 21 1964												13106
15													15													
16	95	95	95	95	95	26 88				26 88			16	PAID IN FULL FEB 21 1964												
17	14	14	14	14	14	3 96				3 96			17	PAID IN FULL FEB 21 1964												
18	87	87	87	87	87	24 62				24 62			18	PAID IN FULL FEB 21 1964												
19	115	115	115	115	115	32 54				32 54			19	PAID IN FULL FEB 21 1964												
20	93.5 4.50 78.5	93.5 4.50 78.5	93.5 4.50 78.5	93.5 4.50 78.5	93.5 4.50 78.5	335 36			4 02	339 38			20			171 50	85 11		78 81							

BANISTER'S REPLICATION

396 Abated

Assessment Roll and Tax List of Real Property in the Town of Loney, Cass County, Minnesota

Cass County, Minnesota, for Taxes for the Year 1963.

Table with columns: IN WHOSE NAME ASSESSED, SUBDIVISION, DESCRIPTION OF PROPERTY, TRUE AND FULL VALUATIONS, ASSESSED VALUATIONS, and FINAL EQUALIZED VALUE.

Table with columns: VALUATIONS BY SCHOOL DISTRICTS AS EQUALIZED BY DEPARTMENT OF TAXATION, TAX INCLUDING STATE HOMESTEAD, SPECIAL TAXES, TOTAL TAXES, PAID, WHEN PAID, and REMARKS.

Real Estate

16-2

MINISTER'S VERIFICATION ADD N PERIOD

Assessment Roll and Tax List of Real Property in the Town of Joray

Form 501 Miller-Davis Co., Minneapolis

* Indicate Type of Property: R-Residential, C-Commercial, I-Industrial, U-Utility, F-Farm, L-Lakeshore, T-Timber, M-Mineral

Table with columns: IN WHOSE NAME ASSESSED, DESCRIPTION OF PROPERTY, TRUE AND FULL VALUATIONS, ASSESSED VALUATIONS (RURAL, ALL OTHER), and FINAL EQUALIZED VALUE.

Cass County, Minnesota, for Taxes for the Year 1963.

Table with columns: VALUATIONS BY SCHOOL DISTRICTS AS EQUALIZED BY DEPARTMENT OF TAXATION, TAXES (SOLID FOR TAXES), PAID, WHEN PAID, Number of Receipt, March Settlement 1964, June Settlement 1964, November Settlement 1964, Collections to First Monday in January 1965, Delinquent on First Monday in January 1965, Total Delinquent Tax and Penalty, REMARKS.

Real Estate

10-25

MINISTER'S REGISTRATION

PERSONAL

Assessment Roll and Tax List of Real Property in the Town of Jorrey

* Indicate Type of Property: R-Residential, C-Commercial, I-Industrial, U-Utility, F-Farm, L-Lakeshore, T-Timber, M-Mineral

Real Estate

18-23

IN WHOSE NAME ASSESSED	DESCRIPTION OF PROPERTY			Number of Acres of Land	No. School District	Indicate Homestead Yes or No	Agricultural Yes or No	Indicate Type of Property	TRUE AND FULL VALUATIONS												FINAL EQUALIZED VALUE
	SUBDIVISION	Sec. of Lot	Town or Block						ASSESSED VALUATIONS				RURAL				ALL OTHER				
									LAND Exclusive of Structures and Improvements	BUILDINGS and Other Structures	MACHINERY Permanently Attached to Real Estate	TOTAL True and Full Value	Homestead Up to \$1,000 20%	Over \$1,000 and Non-Homestead 33 1/3%	Timber Land Class 2c 20%	Homestead Up to \$4,000 25%	Over \$4,000 and Non-Homestead 40%	MACHINERY Permanently Attached to Real Estate 33 1/3%	Seasonal and Recreational Cabins 33 1/3%	TOTAL ASSESSED VALUE	
U. S. of America	GOVT LOT 1			6																	
U. S. of America	GOVT LOT 2			143.25																	
State of Minnesota																					
State of Minnesota																					
U. S. of America	GOVT LOT 3																				
U. S. of America	GOVT LOT 4																				
U. S. of America	GOVT LOT 5																				
U. S. of America																					
U. S. of America																					
U. S. of America	GOVT LOT 6																				
U. S. of America	GOVT LOT 7																				
U. S. of America																					
State of Minnesota																					
State of Minnesota																					
U. S. of America																					
State of Minnesota																					

Cass County, Minnesota, for Taxes for the Year 1963.

SOLD FOR TAXES	VALUATIONS BY SCHOOL DISTRICTS AS EQUALIZED BY DEPARTMENT OF TAXATION						Tax Including State Homestead	State Tax on Non-Homestead	SPECIAL TAXES	SPECIAL TAXES	TOTAL TAXES	PAID	WHEN PAID	Number of Receipt	March Settlement 1964	June Settlement 1964	Penalty	November Settlement 1964	Penalty	Collections to First Monday in January 1965	Penalty	Delinquent on First Monday in January 1965	Total Delinquent Tax and Penalty	REMARKS
	District No.	District Rate	District No.	District Rate	District No.	District Rate																		
	Dollars	Mills	Dollars	Mills	Dollars	Mills																		

MINISTER'S VERIFICATION AND RECORD

Assessment Roll and Tax List of Real Property in the Town of Lorrey

Form SCD - MILLER-DAVIS CO., MINNEAPOLIS

* Indicate Type of Property: R-Residential, C-Commercial, I-Industrial, U-Utility, F-Farm, L-Lakeshore, T-Timber, M-Mineral

IN WHOSE NAME ASSESSED	DESCRIPTION OF PROPERTY				TRUE AND FULL VALUATIONS										FINAL EQUALIZED VALUE						
	SUBDIVISION	Sec. or Lot	Town or Block	Number of Acres of Land	No. School District	Indicate Homestead Yes or No	Agr. or Rec. Yes or No	Indicate Type of Property	ASSESSED VALUATIONS												
									LAND Exclusive of Structures and Improvements	BUILDINGS and Other Structures	MACHINERY Permanently Attached to Real Estate	TOTAL True and Full Value	RURAL						TOTAL ASSESSED VALUE	Total Assessed Value as Equalized by the Board of Review	
													Homestead Up to \$4,000 20%	Over \$4,000 and Non-Homestead 33 1/2 %		Timber Land Class 3e 20%	Homestead Up to \$4,000 25%	Over \$4,000 and Non-Homestead 40%			MACHINERY Permanently Attached to Real Estate 33 1/2 %
Acres	00ths	Dollars	Dollars	Dollars	Dollars	Dollars	Dollars	Dollars	Dollars	Dollars	Dollars	Dollars	Dollars	Dollars							
State of Minnesota																					
U.S. of America		7	143	25																	
U.S. of America																					
U.S. of America																					
U.S. of America																					
U.S. of America																					
U.S. of America																					
U.S. of America																					
U.S. of America																					
U.S. of America																					
U.S. of America																					
U.S. of America																					
U.S. of America																					
U.S. of America																					
U.S. of America																					
U.S. of America																					
U.S. of America																					

Cass County, Minnesota, for Taxes for the Year 1963.

SOLD FOR TAXES	VALUATIONS BY SCHOOL DISTRICTS AS EQUALIZED BY DEPARTMENT OF TAXATION						Tax Including State Homestead	State Tax on Non-Homestead	SPECIAL TAXES	SPECIAL TAXES	TOTAL TAXES	PAID	WHEN PAID	Number of Receipt	March Settlement 1964	June Settlement 1964	Penalty	November Settlement 1964	Penalty	Collections to First Monday in January 1965	Penalty	Delinquent on First Monday in January 1965	Total Delinquent Tax and Penalty	REMARKS
	District No.	District No.	District No.	District No.	District No.	District No.																		
	Rate	Rate	Rate	Rate	Rate	Rate																		
	Dollars	Dollars	Dollars	Dollars	Dollars	Dollars	\$ cts.	\$ cts.	\$ cts.	\$ cts.	\$ cts.													
1																								
2																								
3																								
4																								
5																								
6																								
7																								
8																								
9																								
10																								
11																								
12																								
13																								
14																								
15																								
16																								
17																								
18																								
19																								
20																								

MINNESOTA PERSONAL

Assessment Roll and Tax List of Real Property in the Town of Jorrey
* Indicate Type of Property: R-Residential, C-Commercial, I-Industrial, U-Utility, F-Farm, L-Lakeshore, T-Timber, M-Mineral

Form SCD - MILLER-BAYBICK, MINNEAPOLIS

Real Estate

10-2

10-2

10-2

10-2

10-2

ON WHOSE NAME ASSESSED	DESCRIPTION OF PROPERTY						TRUE AND FULL VALUATIONS										FINAL EQUALIZED VALUE				
	SUBDIVISION	Sec. of Lot	Town or Block	Rtg.	Number of Acres of Land		LAND Exclusive of Structures and Improvements	BUILDINGS and Other Structures	MACHINERY Permanently Attached to Real Estate	TOTAL True and Full Value	ASSESSED VALUATIONS					TOTAL ASSESSED VALUE		Total Assessed Value as Equalized by the Board of Review			
					Acres	100ths					RURAL		ALL OTHER								
State of Minnesota	N E 1/4 of N E 1/4	8	143	25																	
State of Minnesota	N W 1/4 of N E 1/4																				
U. S. of America	S W 1/4 of N E 1/4																				
State of Minnesota	S E 1/4 of N E 1/4																				
State of Minnesota	N E 1/4 of N W 1/4																				
U. S. of America	N W 1/4 of N W 1/4																				
U. S. of America	E W 1/4 of N W 1/4																				
State of Minnesota	S E 1/4 of N W 1/4																				
State of Minnesota	N E 1/4 of S W 1/4																				
State of Minnesota	N W 1/4 of S W 1/4																				
U. S. of America	S W 1/4 of S W 1/4																				
U. S. of America	S E 1/4 of S W 1/4																				
State of Minnesota	N E 1/4 of S E 1/4																				
State of Minnesota	N W 1/4 of S E 1/4																				
State of Minnesota	S W 1/4 of S E 1/4																				
State of Minnesota	S E 1/4 of S E 1/4																				

Cass County, Minnesota, for Taxes for the Year 1963.

SOLD FOR TAXES	VALUATIONS BY SCHOOL DISTRICTS AS EQUALIZED BY DEPARTMENT OF TAXATION						Tax Including State Homestead	State Tax on Non-Homestead	SPECIAL TAXES	SPECIAL TAXES	TOTAL TAXES	PAID	WHEN PAID	Number of Receipt	March Settlement 1964	June Settlement 1964	Penalty	November Settlement 1964	Penalty	Collections to First Monday in January 1965	Penalty	Delinquent on First Monday in January 1965	Total Delinquent Tax and Penalty	REMARKS
	District No.	District No.	District No.	District No.	District No.	District No.																		
	Rate	Rate	Rate	Rate	Rate	Rate																		

MINISTER'S VERIFICATION

2-23-63

Assessment Roll and Tax List of Real Property in the Town of Torrey

Form 300 - MILLER-DAVIS CO., MINNEAPOLIS

* Indicate Type of Property: R-Residential, C-Commercial, I-Industrial, U-Utility, F-Farm, L-Lakeshore, T-Timber, M-Mineral

Real Estate

10-25

Table with columns: IN WHOSE NAME ASSESSED, SUBDIVISION, Section or Lot, Town or Block, Number of Acres of Land, No. School District, Indicate Homestead, Indicate Agricultural, Indicate Type of Property, TRUTH AND FULL VALUATIONS (LAND, BUILDINGS, MACHINERY, TOTAL), RURAL (Homestead, Over \$4,000, Timber, etc.), ALL OTHER (Homestead, Over \$4,000, etc.), MACHINERY, Seasonal and Recreational Cabins, TOTAL ASSESSED VALUE, Total Assessed Value as Equalized by the Board of Review, FINAL EQUALIZED VALUE.

Cass County, Minnesota, for Taxes for the Year 1963.

Table with columns: SOLD FOR TAXES, District No., District Rate, District No., District Rate, District No., District Rate, District No., District Rate, District No., District Rate, Tax Including State Homestead, State Tax on Non-Homestead, SPECIAL TAXES, SPECIAL TAXES, TOTAL TAXES, PAID, WHEN PAID, Number of Receipt, March Settlement 1964, June Settlement 1964, Penalty, November Settlement 1964, Collections to First Monday in January 1965, Penalty, Delinquent on First Monday in January 1965, Total Delinquent Tax and Penalty, REMARKS.

MINNISTON'S REPLICATION

PERSONAL

Assessment Roll and Tax List of Real Property in the Town of Jorvey, Cass County, Minnesota, for Taxes for the Year 1963.

Cass County, Minnesota, for Taxes for the Year 1963.

Real Estate

18-2

Table with columns: IN WHOSE NAME ASSESSED, DESCRIPTION OF PROPERTY, TRUE AND FULL VALUATIONS, ASSESSED VALUATIONS, VALUATIONS BY SCHOOL DISTRICTS AS EQUALIZED BY DEPARTMENT OF TAXATION, TAXES, PAID, WHEN PAID, Number of Receipt, March Settlement 1964, June Settlement 1964, Penalty, November Settlement 1964, Collections to First Monday in January 1965, Delinquent on First Monday in January 1965, Total Delinquent Tax and Penalty, REMARKS.

State of Minnesota
Audra Stockwell
F. W. Stockwell

Gilbert Svenson & Auster Johnson

2nd HALF PAID OCT 9 1964
1st HALF PAID MAY 9 1964
2nd HALF PAID OCT 9 1964
1st HALF PAID MAY 1 1964

2nd HALF PAID OCT 29 1964
1st HALF PAID MAY 13 1964

MANSTER S. VERMILION
ADDN
2-5-50-1

Assessment Roll and Tax List of Real Property in the Town of Jarrow of Jorrey

Cass County, Minnesota, for Taxes for the Year 1963.

Table with columns: IN WHOSE NAME ASSESSED, DESCRIPTION OF PROPERTY, TRUE AND FULL VALUATIONS, ASSESSED VALUATIONS, VALUATIONS BY SCHOOL DISTRICTS AS EQUALIZED BY DEPARTMENT OF TAXATION, TAX INCLUDING STATE HOMESTEAD, SPECIAL TAXES, PAID, WHEN PAID, Number of Receipt, March Settlement 1964, June Settlement 1964, Penalty, November Settlement 1964, Collections to First Monday in January 1965, Delinquent on First Monday in January 1965, Total Delinquent Tax and Penalty, REMARKS.

Robert A. Hron
Thomas & Boris Hron
U. S. of America
William F. Jr. & Dorothy M. Hulbert
Paul E. Echlund
Tony & Rosemary H. Hron
Harry Harthan
U. S. of America
U. S. of America
William F. Jr. & Dorothy M. Hulbert
U. S. of America
U. S. of America
Floyd R. & Agnes L. Boileau

Table with columns: SUBDIVISION, Sec or Lot, Town or Block, Number of Acres of Land, No. School District, Indicate Homestead, Indicate Sea-View, Indicate Type of Property, LAND Exclusive of Structures and Improvements, BUILDINGS and Other Structures, MACHINERY Permanently Attached to Real Estate, TOTAL True and Full Value, RURAL (Homestead, Over \$4,000 and Non-Homestead, Timber Land Class 3e), ALL OTHER (Homestead, Over \$4,000 and Non-Homestead, MACHINERY Permanently Attached to Real Estate, Seasonal and Recreational Cabins), TOTAL ASSESSED VALUE, Total Assessed Value as Equalized by the Board of Review, FINAL EQUALIZED VALUE.

Table with columns: SOLD FOR TAXES, District No., District Rate, District Mills, District No., District Rate, District Mills, District No., District Rate, District Mills, District No., District Rate, District Mills, Tax Including State Homestead, State Tax on Non-Homestead, SPECIAL TAXES, SPECIAL TAXES, TOTAL TAXES, PAID, WHEN PAID, Number of Receipt, March Settlement 1964, June Settlement 1964, Penalty, November Settlement 1964, Collections to First Monday in January 1965, Delinquent on First Monday in January 1965, Total Delinquent Tax and Penalty, REMARKS.

Assessment Roll and Tax List of Real Property in the Town of Jorey

Cass County, Minnesota, for Taxes for the Year 1963.

Form SCD - MILLER BROS. CO., MINNEAPOLIS

* Indicate Type of Property: R-Residential, C-Commercial, I-Industrial, U-Utility, F-Farm, L-Lakeshore, T-Timber, M-Mineral

Table with columns: IN WHOSE NAME ASSESSED, DESCRIPTION OF PROPERTY, TRUE AND FULL VALUATIONS, ASSESSED VALUATIONS, VALUATIONS BY SCHOOL DISTRICTS AS EQUALIZED BY DEPARTMENT OF TAXATION, TAXES, PAID, WHEN PAID, etc.

IN WHOSE NAME ASSESSED: Helen Fields, Ben F. + Helen F. Fields, State of Minnesota, Fred Heinrich, Ben F. + Helen F. Fields, Pearl Henry, James + Pearl Henry, State of Minnesota, U.S. of America, Fred + Gladys Heinrich, State of Minnesota, U.S. of America

Table with columns: SUBDIVISION, Sec. or Lot, Town or Block, Number of Acres of Land, School District, Indicate Homestead, Indicate Seasonal, Indicate Type of Property, LAND, BUILDINGS, MACHINERY, TOTAL, RURAL, ALL OTHER, MACHINERY, Seasonal and Recreational Cabins, TOTAL ASSESSED VALUE, Total Assessed Value as Equalized by the Board of Review, FINAL EQUALIZED VALUE

Table with columns: SOLD FOR TAXES, District No., District No., District No., District No., District No., District No., Tax Including State Homestead, State Tax on Non-Homestead, SPECIAL TAXES, SPECIAL TAXES, TOTAL TAXES, PAID, WHEN PAID, Number of Receipt, March Settlement 1964, June Settlement 1964, Penalty, November Settlement 1964, Penalty, Collections to First Monday in January 1965, Penalty, Delinquent on First Monday in January 1965, Total Delinquent Tax and Penalty, REMARKS

Real Estate

18-2

MINISTER'S VERIFICATION PERSON

Assessment Roll and Tax List of Real Property in the Town of Jorney

Cass County, Minnesota, for Taxes for the Year 1963.

Table with columns for IN WHOSE NAME ASSESSED, DESCRIPTION OF PROPERTY, TRUE AND FULL VALUATIONS, ASSESSED VALUATIONS (RURAL, ALL OTHER), VALUATIONS BY SCHOOL DISTRICTS, TAX INCLUDING STATE HOMESTEAD, STATE TAX ON NON-HOMESTEAD, SPECIAL TAXES, TOTAL TAXES, PAID, WHEN PAID, Number of Receipt, March Settlement 1964, June Settlement 1964, November Settlement 1964, Collections to First Monday in January 1965, Delinquent on First Monday in January 1965, Total Delinquent Tax and Penalty, and REMARKS.

Real Estate

MINNISTON'S REPRODUCTION

Assessment Roll and Tax List of Real Property in the Town of Jorey, Cass County, Minnesota, for Taxes for the Year 1963.

Form 500 HILLBURY CO., MINNEAPOLIS

IN WHOSE NAME ASSESSED: State of Minnesota, Floyd P. Boileau

State of Minnesota, State of Minnesota, State of Minnesota, State of Minnesota, State of Minnesota, Sara J. + Daniel Grimsbo, State of Minnesota, State of Minnesota, Robert V. + Marguerite Phipps

Table with columns: SUBDIVISION, DESCRIPTION OF PROPERTY, TRUE AND FULL VALUATIONS, ASSESSED VALUATIONS (RURAL, ALL OTHER), and FINAL EQUALIZED VALUE.

Table with columns: VALUATIONS BY SCHOOL DISTRICTS AS EQUALIZED BY DEPARTMENT OF TAXATION, TAXES (SOLD FOR, SPECIAL, TOTAL), PAID, WHEN PAID, and REMARKS.

MINNISTON S. ADL'N

Assessment Roll and Tax List of Real Property in the Town of Jouray,
 * Indicate Type of Property: R-Residential, C-Commercial, I-Industrial, U-Utility, F-Farm, L-Lakeshore, T-Timber, M-Mineral

Form 500 - WILSON-DAVIS CO., MINNEAPOLIS

Real Estate

10-5

WHOSE NAME ASSESSED	DESCRIPTION OF PROPERTY				TRUE AND FULL VALUATIONS										FINAL EQUALIZED VALUE					
	SUBDIVISION	Sec. or Lot	Town or Block	Number of Acres of Land	LAND Exclusive of Structures and Improvements	BUILDINGS and Other Structures	MACHINERY Permanently Attached to Real Estate	TOTAL True and Full Value	ASSESSED VALUATIONS							TOTAL ASSESSED VALUE	Total Assessed Value as Equalized by the Board of Review			
									RURAL			ALL OTHER						MACHINERY Permanently Attached to Real Estate	Seasonal and Recreational Cabins	TOTAL ASSESSED VALUE
									Homestead Up to \$1,000 20%	Over \$1,000 and Non-Homestead 33 1/3%	Timber Land Class 20%	Homestead Up to \$1,000 25%	Over \$1,000 and Non-Homestead 40%	33 1/3%						
Acres 100ths	No. School District	Indicate Homestead Yes or No	Agri. or Sea. Prop. Yes or No	* Indicate Type of Property	Dollars	Dollars	Dollars	Dollars	Dollars	Dollars	Dollars	Dollars	Dollars	Dollars						
State of Minnesota																				
State of Minnesota				17 143.25																
State of Minnesota																				
U.S. of America																				
U.S. of America																				
U.S. of America																				
U.S. of America																				
U.S. of America																				
U.S. of America																				
U.S. of America																				
State of Minnesota																				
U.S. of America																				
U.S. of America																				
State of Minnesota																				
State of Minnesota																				
State of Minnesota																				
State of Minnesota																				
State of Minnesota																				
State of Minnesota																				
State of Minnesota																				

Cass County, Minnesota, for Taxes for the Year 1963.

SOLD FOR TAXES	VALUATIONS BY SCHOOL DISTRICTS AS EQUALIZED BY DEPARTMENT OF TAXATION						Tax Including State Homestead	State Tax on Non-Homestead	SPECIAL TAXES	SPECIAL TAXES	TOTAL TAXES	PAID	WHEN PAID	Number of Receipt	March Settlement 1964	June Settlement 1964	Penalty	November Settlement 1964	Penalty	Collections to First Monday in January 1965	Penalty	Delinquent on First Monday in January 1965	Total Delinquent Tax and Penalty	REMARKS
	District No.	District No.	District No.	District No.	District No.	District No.																		
	Rate	Rate	Rate	Rate	Rate	Rate																		
	Mills	Mills	Mills	Mills	Mills	Mills																		
Dollars	Dollars	Dollars	Dollars	Dollars	Dollars	\$	cts.	\$	cts.	\$	cts.	\$	cts.	\$	cts.	\$	cts.	\$	cts.	\$	cts.	\$	cts.	
1																								
2																								
3																								
4																								
5																								
6																								
7																								
8																								
9																								
10																								
11																								
12																								
13																								
14																								
15																								
16																								
17																								
18																								
19																								
20																								

BANKSTON'S REPRODUCTION PERSONA

Assessment Roll and Tax List of Real Property in the Town of Jorrey

Form 800 MILLER-DAVIS CO., MINNEAPOLIS

* Indicate Type of Property: R-Residential, C-Commercial, I-Industrial, U-Utility, F-Farm, L-Lakeshore, T-Timber, M-Mineral

Table with columns: IN WHOSE NAME ASSESSED, DESCRIPTION OF PROPERTY, TRUE AND FULL VALUATIONS, ASSESSED VALUATIONS, and FINALE QUALIZED VALUE.

Cass County, Minnesota, for Taxes for the Year 1963.

Table with columns: VALUATIONS BY SCHOOL DISTRICTS AS EQUALIZED BY DEPARTMENT OF TAXATION, TAX INCLUDING STATE HOMESTEAD, SPECIAL TAXES, TOTAL TAXES, PAID, WHEN PAID, and REMARKS.

Assessment Roll and Tax List of Real Property in the Town of Torrey

Form 500-MILLS-DAVIS CO-MINNEAPOLIS

* Indicate Type of Property: R-Residential, C-Commercial, I-Industrial, U-Utility, F-Farm, L-Lakeshore, T-Timber, M-Mineral

Cass County, Minnesota, for Taxes for the Year 1963.

Table with columns: IN WHOSE NAME ASSESSED, DESCRIPTION OF PROPERTY, TRUE AND FULL VALUATIONS, ASSESSED VALUATIONS, and FINAL EQUALIZED VALUE.

Table with columns: VALUATIONS BY SCHOOL DISTRICTS AS EQUALIZED BY DEPARTMENT OF TAXATION, TAXES, PAID, WHEN PAID, Number of Receipt, March Settlement 1964, June Settlement 1964, November Settlement 1964, Collections to First Monday in January 1965, Delinquent on First Monday in January 1965, Total Delinquent Tax and Penalty, REMARKS.

Real Estate

PAINTERS' VERIFICATION

1963

Assessment Roll and Tax List of Real Property in the Town of Jovey

* Indicate Type of Property: R-Residential, C-Commercial, I-Industrial, U-Utility, F-Farm, L-Lakeshore, T-Timber, M-Mineral

Table with columns: IN WHOSE NAME ASSESSED, DESCRIPTION OF PROPERTY, TRUTH AND FULL VALUATIONS, ASSESSED VALUATIONS, and FINAL EQUALIZED VALUE. Includes entries for State of Minnesota and U.S. of America with various property descriptions and valuations.

(Continued)

Cass County, Minnesota, for Taxes for the Year 1963.

Table with columns: SOLD FOR TAXES, VALUATIONS BY SCHOOL DISTRICTS AS EQUALIZED BY DEPARTMENT OF TAXATION, TAX INCLUDING STATE HOMESTEAD, SPECIAL TAXES, TOTAL TAXES, PAID, WHEN PAID, Number of Receipt, March Settlement, June Settlement, November Settlement, Collections to First Monday in January, Delinquent on First Monday in January, Total Delinquent Tax and Penalty, and REMARKS. Includes handwritten entries for tax payments and dates.

Assessment Roll and Tax List of Real Property in the Town of Jorvey

Cass County, Minnesota, for Taxes for the Year 1963.

Form 500 MILLER-DAVIS CO., MINNEAPOLIS * Indicate Type of Property: R-Residential, C-Commercial, I-Industrial, U-Utility, F-Farm, L-Lakeshore, T-Timber, M-Mineral

Table with columns: IN WHOSE NAME ASSESSED, DESCRIPTION OF PROPERTY, TRUE AND FULL VALUATIONS, ASSESSED VALUATIONS, and FINAL EQUALIZED VALUE. Includes handwritten entries for property owners like Joseph + Janet B. Moravak and Arthur W. Oberg.

Table with columns: VALUATIONS BY SCHOOL DISTRICTS AS EQUALIZED BY DEPARTMENT OF TAXATION, TAXES, PAID, WHEN PAID, and REMARKS. Includes handwritten entries for tax amounts and payment dates.

Real Estate

HANISTER'S VERIFICATION

PERSONA

Assessment Roll and Tax List of Real Property in the Town of Torrey

Cass County, Minnesota, for Taxes for the Year 1963.

Form 307 MILLER-PAYE CO., MINNEAPOLIS

* Indicate Type of Property: R-Residential, C-Commercial, I-Industrial, U-Utility, F-Farm, L-Lakeshore, T-Timber, M-Mineral

Table with columns: IN WHOSE NAME ASSESSED, DESCRIPTION OF PROPERTY, TRUE AND FULL VALUATIONS, ASSESSED VALUATIONS, VALUATIONS BY SCHOOL DISTRICTS AS EQUALIZED BY DEPARTMENT OF TAXATION, TAX INCLUDING STATE, SPECIAL TAXES, TOTAL TAXES, PAID, WHEN PAID, Number of Receipt, March Settlement 1964, June Settlement 1964, November Settlement 1964, Penalty, Collections to First Monday in January 1965, Delinquent on First Monday in January 1965, Total Delinquent Tax and Penalty, REMARKS.

Real Estate

MANAGER'S DEPARTMENT

Assessment Roll and Tax List of Real Property in the Town of Jarray

Cass County, Minnesota, for Taxes for the Year 1963.

Form 300 MILLER-GAVER CO., MINNEAPOLIS * Indicate Type of Property: R-Residential, C-Commercial, I-Industrial, U-Utility, F-Farm, L-Lakeshore, T-Timber, M-Mineral

Table with columns: IN WHOSE NAME ASSESSED, DESCRIPTION OF PROPERTY, TRUE AND FULL VALUATIONS, ASSESSED VALUATIONS, VALUATIONS BY SCHOOL DISTRICTS AS EQUALIZED BY DEPARTMENT OF TAXATION, TAXES, PAID, WHEN PAID, Number of Receipt, March Settlement 1964, June Settlement 1964, November Settlement 1964, Collections to First Monday in January 1965, Delinquent on First Monday in January 1965, Total Delinquent Tax and Penalty, REMARKS.

Assessment Roll and Tax List of Real Property in the

Town of Lovrey

* Indicate Type of Property: R-Residential, C-Commercial, I-Industrial, U-Utility, F-Farm, L-Lakeshore, T-Timber, M-Mineral

Cass County, Minnesota, for Taxes for the Year 1963.

Form SCD HILLER-DAVIS MINNEAPOLIS

IN WHOSE NAME ASSESSED	DESCRIPTION OF PROPERTY				No. School District	Indicate Homestead Yes or No	Agricultural Use Yes or No	Indicate Type of Property	TRUE AND FULL VALUATIONS			ASSESSED VALUATIONS							FINAL EQUALIZED VALUE	SOLD FOR TAXES	VALUATIONS BY SCHOOL DISTRICTS AS EQUALIZED BY DEPARTMENT OF TAXATION						PAID	WHEN PAID	Number of Receipt	March Settlement 1964	June Settlement 1964	November Settlement 1964	Penalty	Collections to First Monday in January 1965	Penalty	Delinquent on First Monday in January 1965	Total Delinquent Tax and Penalty	REMARKS																
	SUBDIVISION	Sec. or Lot	Town or Block	Rng.					Number of Acres of Land	LAND Exclusive of Structures and Improvements	BUILDINGS and Other Structures	MACHINERY Permanently Attached to Real Estate	TOTAL True and Full Value	RURAL			ALL OTHER				TOTAL ASSESSED VALUE	Total Assessed Value as Equalized by the Board of Review	District No.	District No.	District No.	District No.													District No.	District No.	Rate	Rate	Rate	Rate	Rate	Rate	Mills	Mills	Mills	Mills	Mills	Mills		
														Homestead Up to \$4,000 20%	Over \$4,000 and Non-Homestead 33 1/3%	Timber Land Class 20%	Homestead Up to \$4,000 25%	Over \$4,000 and Non-Homestead 40%																																			MACHINERY Permanently Attached to Real Estate 33 1/3%	Seasonal and Recreational Cabins 33 1/3%
U. S. of America	1				24 1/3 25																																																	
U. S. of America	4																																																					
U. S. of America	15				17.5 acs. of NE 1/4 SW 1/4	17.5			70. yes T																																													
U. S. of America	16				NE 1/4 SW 1/4 less 17.5 acs.																																																	
U. S. of America	20					17.5																																																

Real Estate

HAMILTON'S VERIFICATION

Assessment Roll and Tax List of Real Property in the Town of Jovray

* Indicate Type of Property: R-Residential, C-Commercial, I-Industrial, U-Utility, F-Farm, L-Lakeshore, T-Timber, M-Mineral

FORM 500 MILLER-DAVIS CO., MINNEAPOLIS

DESCRIPTION OF PROPERTY

TRUE AND FULL VALUATIONS

ASSESSED VALUATIONS

Table with columns: IN WHOSE NAME ASSESSED, SUBDIVISION, Section or Lot, Town or Block, Number of Acres of Land, School District, Indicate Homestead, Agricultural, Indicate Type of Property, LAND, BUILDINGS, MACHINERY, TOTAL, RURAL, ALL OTHER, MACHINERY, Seasonal and Recreational Cabins, TOTAL ASSESSED VALUE, Total Assessed Value as Equalized by the Board of Review, FINAL EQUALIZED VALUE.

Cass County, Minnesota, for Taxes for the Year 1963.

Table with columns: SOLD FOR TAXES, VALUATIONS BY SCHOOL DISTRICTS AS EQUALIZED BY DEPARTMENT OF TAXATION, Tax Including State Homestead, State Tax on Non-Homestead, SPECIAL TAXES, SPECIAL TAXES, TOTAL TAXES, PAID, WHEN PAID, Number of Receipt, March Settlement 1964, June Settlement 1964, November Settlement 1964, Collections to First Monday in January 1965, Delinquent on First Monday in January 1965, Total Delinquent Tax and Penalty, REMARKS.

14-25
Real Estate

MANAGER'S VERIFICATION
ADD

PERSONA

Assessment Roll and Tax List of Real Property in the Town of Lorey

* Indicate Type of Property: R-Residential, C-Commercial, I-Industrial, U-Utility, F-Farm, L-Lakeshore, T-Timber, M-Mineral

Form 1 CD - HILLESBAUM CO., MINNEAPOLIS

Table with columns: IN WHOSE NAME ASSESSED, DESCRIPTION OF PROPERTY, TRUE AND FULL VALUATIONS, ASSESSED VALUATIONS, and FINAL EQUALIZED VALUE. Includes entries for State of Minnesota and Norman V. Winter.

Cass County, Minnesota, for Taxes for the Year 1963.

Table with columns: VALUATIONS BY SCHOOL DISTRICTS AS EQUALIZED BY DEPARTMENT OF TAXATION, TAXES, PAID, WHEN PAID, and REMARKS. Includes handwritten entries for tax payments and school district numbers.

Assessment Roll and Tax List of Real Property in the

Town of Lot 3 29-143-25

* Indicate Type of Property: R-Residential, C-Commercial, I-Industrial, U-Utility, P-Farm, L-Lakefront, T-Timber, M-Mineral

Form 8CD-BLUES-DAVID CO. MINNEAPOLIS

DESCRIPTION OF PROPERTY

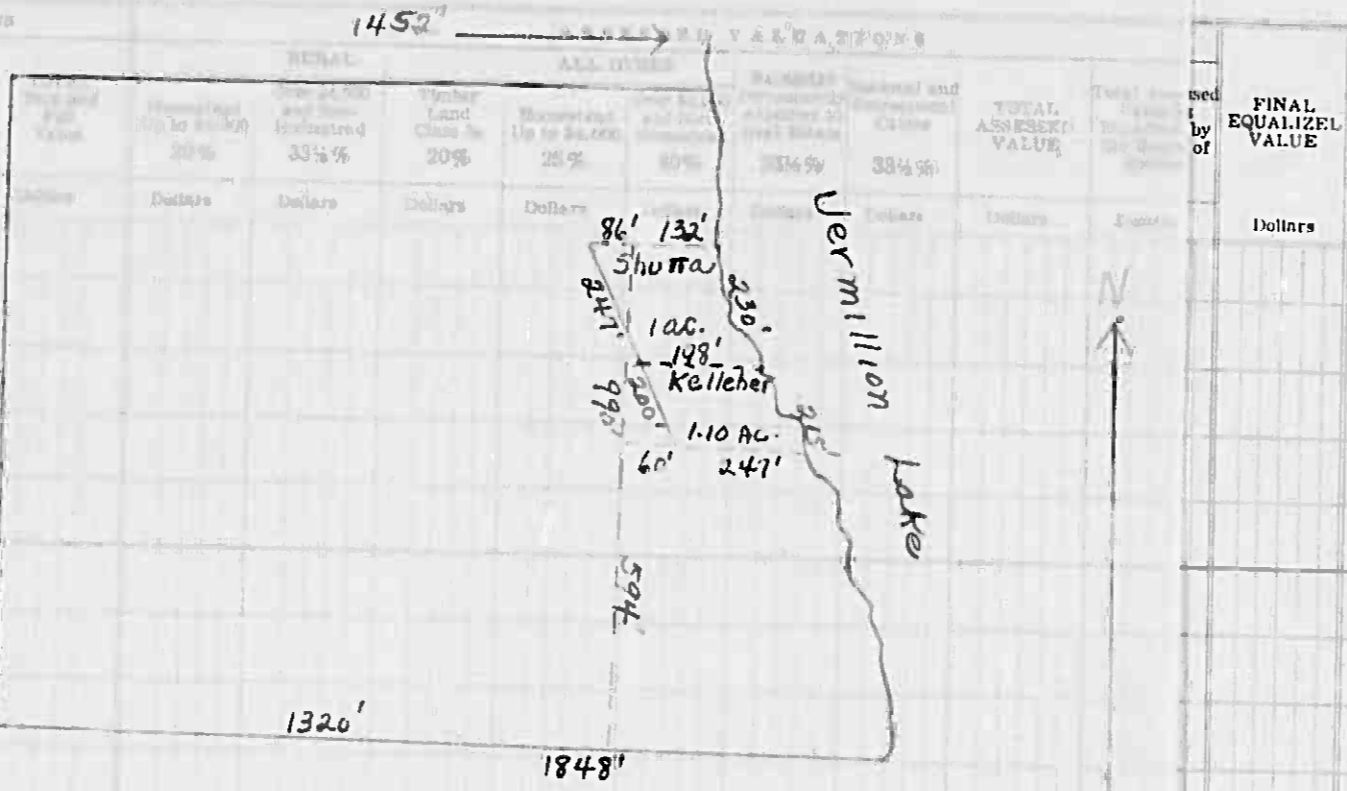
TRUE AND FULL VALUE

IN WHOSE NAME ASSESSED

SUBDIVISION
Sec. of Lot
Town or Block
Number of Acres of Land
Acres 100ths

Indicate Home-Stead Yes or No
Indicate Rate Yes or No
Indicate Type of Property
LAND Exclusive of Structures and Improvements
BUILDINGS and Other Structures
MACHINE Permanently Attached Real Estate

Table with 20 rows listing property owners (e.g., Roy & Goldie Burwell, Joseph M. & Florence Schutta) and their respective lot descriptions and values.



LOD added part 3
126

Cass County, Minnesota, for Taxes for the Year 1963.

Large table with columns for SOLD FOR TAXES, VALUATIONS BY SCHOOL DISTRICTS, SPECIAL TAXES, TOTAL TAXES, PAID, WHEN PAID, and REMARKS. It contains 20 rows of tax data.

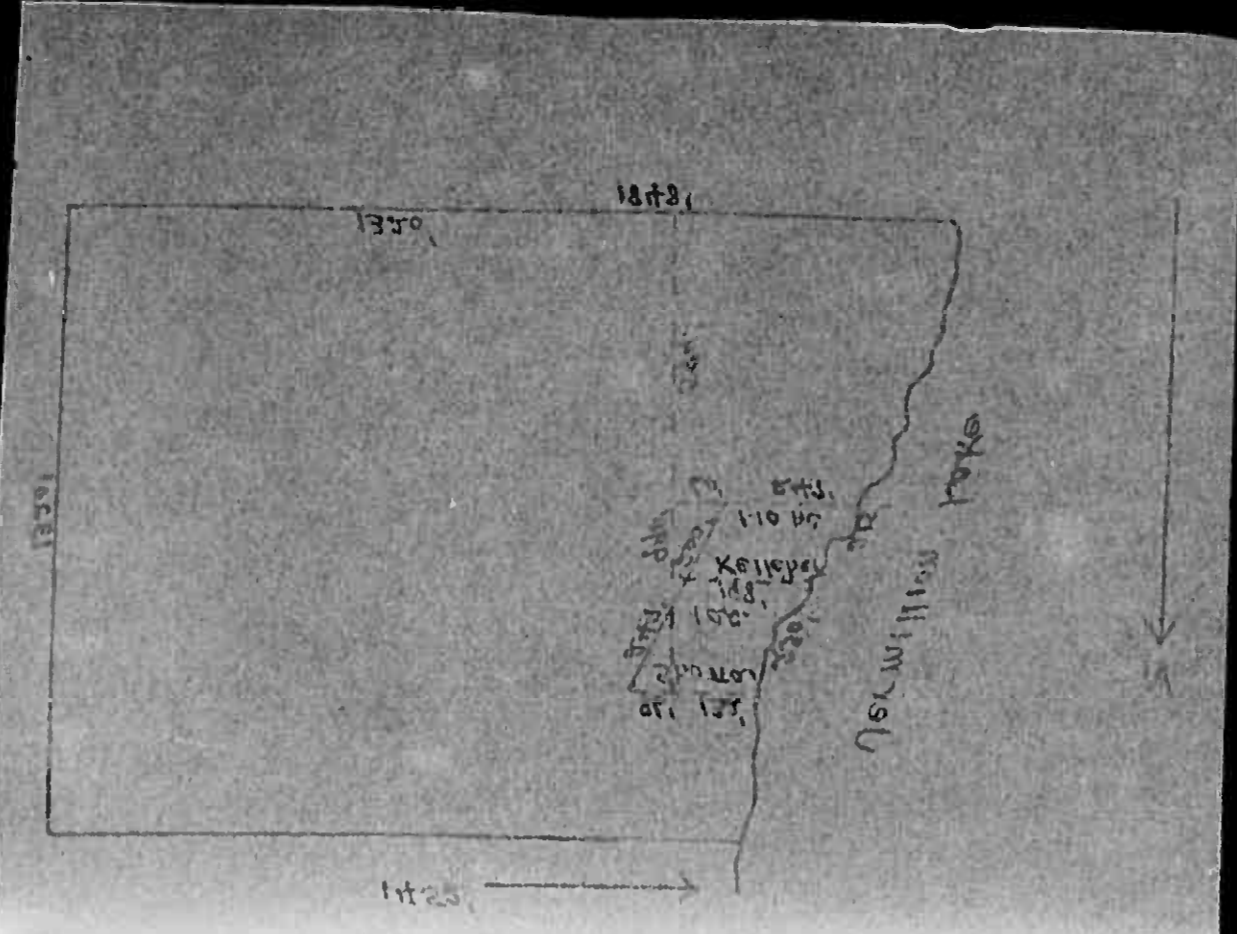
Real Estate
14-2

BANISTER'S VERMILION
ADD N
12012

Assessment Roll and Tax List of Real Property in the Town of Jorey

Form 8CD - WILSON-DAVIS CO., MINNEAPOLIS

Table with columns: IN WHOSE NAME ASSESSED, DESCRIPTION OF PROPERTY, TRUE AND FULL VALUATIONS, ASSESSED VALUATIONS, and FINAL EQUALIZED VALUE. Includes handwritten entries for Roy + Goldie Burwell, Joseph M. + Florence Schutta, etc.



Cass County, Minnesota, for Taxes for the Year 1963.

Table with columns: SOLD FOR TAXES, VALUATIONS BY SCHOOL DISTRICTS AS EQUALIZED BY DEPARTMENT OF TAXATION, SPECIAL TAXES, TOTAL TAXES, PAID, WHEN PAID, Number of Receipt, March Settlement 1964, June Settlement 1964, November Settlement 1964, Collections to First Monday in January 1965, Delinquent on First Monday in January 1965, Total Delinquent Tax and Penalty, and REMARKS. Includes handwritten entries for various tax payments and settlements.

Assessment Roll and Tax List of Real Property in the Town of Loney

Form 500 - MILLER-DAVIS CO., MINNEAPOLIS

* Indicate Type of Property: R-Residential, C-Commercial, I-Industrial, U-Utility, F-Farm, L-Lakeshore, T-Timber, M-Mineral

Cass County, Minnesota, for Taxes for the Year 1963.

Table with columns for 'IN WHOSE NAME ASSESSED', 'DESCRIPTION OF PROPERTY', 'TRUE AND FULL VALUATIONS', 'ASSESSED VALUATIONS', 'VALUATIONS BY SCHOOL DISTRICTS AS EQUALIZED BY DEPARTMENT OF TAXATION', and 'PAID'. Includes rows for State of Minnesota and U.S. of America with various lot numbers and tax details.

Assessment Roll and Tax List of Real Property in the Town of Lorey

* Indicate Type of Property: R-Residential, C-Commercial, I-Industrial, U-Utility, F-Farm, L-Lakeshore, T-Timber, M-Mineral

Cass County, Minnesota, for Taxes for the Year 1963.

Form 5012-MILLER-DAVIS CO-MINNEAPOLIS

IN WHOSE NAME ASSESSED	DESCRIPTION OF PROPERTY				No. School District	Indicate Homestead Yes or No	Agri or Res Yes or No	Indicate Type of Property	TRUE AND FULL VALUATIONS						Total Assessed Value as Equalized by the Board of Review	FINAL EQUALIZED VALUE	SOLD FOR TAXES	VALUATIONS BY SCHOOL DISTRICTS AS EQUALIZED BY DEPARTMENT OF TAXATION						PAID	WHEN PAID	Number of Receipt	March Settlement 1961	June Settlement 1961	Penalty	November Settlement 1961	Penalty	Collections to First Monday in January 1963	Penalty	Delinquent on First Monday in January 1963	Total Delinquent Tax and Penalty	REMARKS									
	SUBDIVISION	Sec. or Lot	Town or Block	Number of Acres of Land					LAND Exclusive of Structures and Improvements	BUILDINGS and Other Structures	MACHINERY Permanently Attached to Real Estate	TOTAL True and Full Value	ASSESSED VALUATIONS					TOTAL ASSESSED VALUE	District No.	District Rate	District No.	District Rate	District No.														District Rate	District No.	District Rate	SPECIAL TAXES	SPECIAL TAXES	TOTAL TAXES			
													RURAL	ALL OTHER																													TOTAL	Tax including State Homestead	State Tax on Non-Homestead
State of Minnesota																																													
U. S. of America				31 143 25																																									
U. S. of America																																													
State of Minnesota																																													
U. S. of America																																													
U. S. of America																																													
U. S. of America																																													
U. S. of America																																													
U. S. of America																																													
U. S. of America																																													
U. S. of America																																													
U. S. of America																																													
U. S. of America																																													
U. S. of America																																													
U. S. of America																																													
U. S. of America																																													
U. S. of America																																													
U. S. of America																																													
U. S. of America																																													
U. S. of America																																													
U. S. of America																																													
U. S. of America																																													

Real Estate

16-2

MINISTER'S REGISTRATION

ADD N

PERSONS

Assessment Roll and Tax List of Real Property in the Town of Torrey

Cass County, Minnesota, for Taxes for the Year 1963.

Table with columns for Property Description, Valuations (True and Full, Assessed), Taxes (SOLD FOR TAXES, VALUATIONS BY SCHOOL DISTRICTS), and Payment/Remarks. Includes entries for U.S. of America, State of Minnesota, and Ralph J. + Thelma L. Dugan.

Assessment Roll and Tax List of Real Property in the Town of Jorey

Cass County, Minnesota, for Taxes for the Year 1963.

Table with columns: IN WHOSE NAME ASSESSED, DESCRIPTION OF PROPERTY, TRUE AND FULL VALUATIONS, ASSESSED VALUATIONS, VALUATIONS BY SCHOOL DISTRICTS AS EQUALIZED BY DEPARTMENT OF TAXATION, TAXES, PAID, WHEN PAID, Number of Receipt, March Settlement 1964, June Settlement 1964, Penalty, November Settlement 1964, Collections to First Monday in January 1965, Delinquent on First Monday in January 1965, Total Delinquent Tax and Penalty, REMARKS.

Assessment Roll and Tax List of Real Property in the Town of Jorey

Cass County, Minnesota, for Taxes for the Year 1963.

Table with columns: IN WHOSE NAME ASSESSED, DESCRIPTION OF PROPERTY, TRUE AND FULL VALUATIONS, ASSESSED VALUATIONS, VALUATIONS BY SCHOOL DISTRICTS AS EQUALIZED BY DEPARTMENT OF TAXATION, TAXES, PAID, WHEN PAID, Number of Receipt, March Settlement 1964, June Settlement 1964, November Settlement 1964, Collections to First Monday in January 1965, Delinquent on First Monday in January 1965, Total Delinquent Tax and Penalty, REMARKS.

Assessment Roll and Tax List of Real Property in the Town of Jorey

Form 5010 - MILLER-DAVIS CO., MINNEAPOLIS

* Indicate Type of Property: R-Residential, C-Commercial, I-Industrial, U-Utility, F-Farm, L-Lakeshore, T-Timber, M-Mineral

Cass County, Minnesota, for Taxes for the Year 1963.

Table with columns for IN WHOSE NAME ASSESSED, DESCRIPTION OF PROPERTY, TRUE AND FULL VALUATIONS, ASSESSED VALUATIONS, VALUATIONS BY SCHOOL DISTRICTS AS EQUALIZED BY DEPARTMENT OF TAXATION, and REMARKS. Includes rows for U.S. of America and State of Minnesota.

Real Estate

14-2

MINISTER'S VERIFICATION

2-28-63

Assessment Roll and Tax List of Real Property in the Town of Loring

Cass County, Minnesota, for Taxes for the Year 1963.

Form 5C MILLER-DAVIS CO., MINNEAPOLIS

* Indicate Type of Property: R-Residential, C-Commercial, I-Industrial, U-Utility, F-Farm, L-Lakeshore, T-Timber, M-Mineral

Table with columns: DESCRIPTION OF PROPERTY, TRUE AND FULL VALUATIONS, ASSESSED VALUATIONS, and FINAL EQUALIZED VALUE. Includes property details for Bannister's Vermillion Lake Addition.

Table with columns: VALUATIONS BY SCHOOL DISTRICTS AS EQUALIZED BY DEPARTMENT OF TAXATION, TAXES, PAID, WHEN PAID, and REMARKS. Includes tax rates and payment dates for each property.

Real Estate

BANNISTER'S VERMILION

Personal

Assessment Roll and Tax List of Real Property in the Town of Jorrey

Cass County, Minnesota, for Taxes for the Year 1963.

Form 5C HALL-DAVIS CO. MINNEAPOLIS

* Indicate Type of Property: R-Residential, C-Commercial, I-Industrial, U-Utility, F-Farm, L-Lakeshore, T-Timber, M-Mineral

Table with columns for Property Description, Valuations (True and Full, Assessed), Taxes (SOLD FOR TAXES, VALUATIONS BY SCHOOL DISTRICTS), and Payment Status (PAID, WHEN PAID, etc.). Includes handwritten entries for property owners like Ralph E. + Florence M. Bannister and Leo E. Brown.

Real Estate

10-2

ADD 'N BANNISTER'S VERMILION

PERSONA

Assessment Roll and Tax List of Real Property in the _____ of _____

* Indicate Type of Property: R-Residential, C-Commercial, I-Industrial, U-Utility, F-Farm, L-Lakeshore, T-Timber, M-Mineral

Form 50 MINNEAPOLIS

Cass County, Minnesota, for Taxes for the Year 1963.

IN WHOSE NAME ASSESSED	DESCRIPTION OF PROPERTY		TRUE AND FULL VALUATIONS										FINAL EQUALIZED VALUE			
	Subdivision	No. of Acres	LAND EXCLUSIVE OF STRUCTURES AND IMPROVEMENT	BUILDINGS AND OTHER STRUCTURES	MACHINERY PERMANENTLY ATTACHED TO REAL ESTATE	TOTAL True and Full Value	RURAL					ALL OTHER		TOTAL ASSESSED VALUE	Total Assessed Value as Equalized by the Board of Review	
							Homestead Up to \$4,000 20%	Over \$4,000 and Non-Homestead 33 1/2%	Timber Land Class 3c 20%	Homestead Up to \$4,000 25%	Over \$4,000 and Non-Homestead 40%	MACHINERY Permanently Attached to Real Estate 33 1/2%				Seasonal and Recreational Cabins 33 1/2%
<i>Clinton R. & Hull M. Ratfield</i>	<i>77 acres of 1874 & 1877</i>	<i>27.1025</i>														
		<i>1</i>														
		<i>2</i>														
		<i>3</i>														
		<i>4</i>														
<i>Wm. V. Olson, Adm. R. Olson</i>		<i>5</i>														
		<i>6</i>														
		<i>7</i>														
		<i>8</i>														
		<i>9</i>														
		<i>10</i>														
		<i>11</i>	<i>51330</i>													
		<i>12</i>														
		<i>13</i>														
		<i>14</i>														
		<i>15</i>														
		<i>16</i>														
		<i>17</i>														
		<i>18</i>														
		<i>19</i>														
		<i>20</i>														

SOLD FOR TAXES	VALUATIONS BY SCHOOL DISTRICTS AS EQUALIZED BY DEPARTMENT OF TAXATION						Tax Including State Homestead	State Tax on Non-Homestead	SPECIAL TAXES	SPECIAL TAXES	TOTAL TAXES	PAID	WHEN PAID	Number of Receipt	March Settlement 1964	June Settlement 1964	November Settlement 1964	Penalty	Collections to First Monday in January 1965	Penalty	Delinquent on First Monday in January 1965	Total Delinquent Tax and Penalty	REMARKS
	District No.	Rate	District No.	Rate	District No.	Rate																	
	Dollars	Mills	Dollars	Mills	Dollars	Mills																	
	District No. <i>1492</i>	<i>297</i>	District No. <i>5338</i>	<i>7257</i>	District No. <i>317</i>	<i>2.09156</i>																	
	District No. <i>7432</i>	<i>1540</i>	District No. <i>1202</i>	<i>10679</i>	District No. <i>8925</i>	<i>1967</i>																	

Real Estate
10-2
BANNER'S VERIFICATION

Personal