

ASSESSMENT & TAX LIST

Torrey

1953

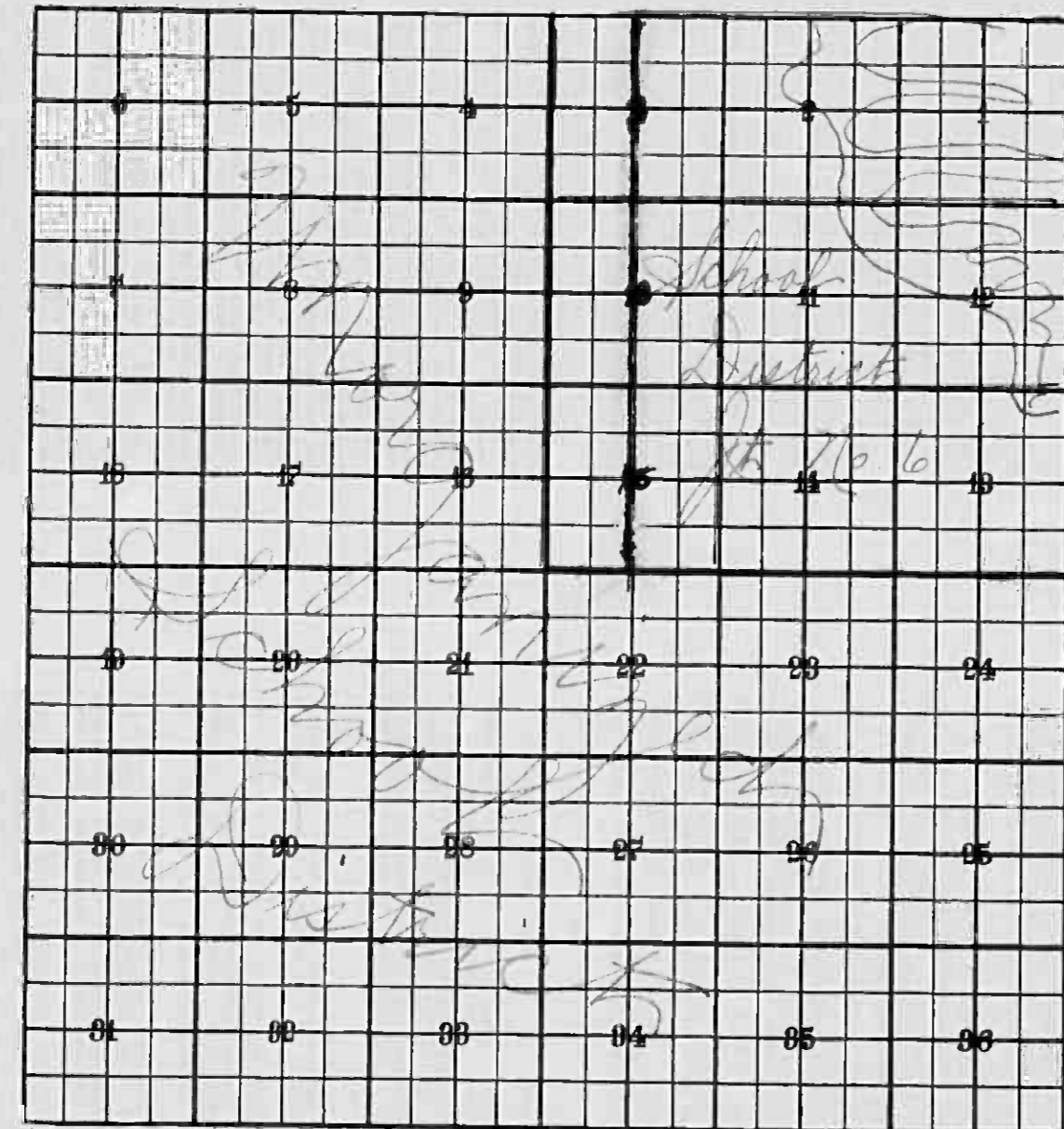
INDEX TO SECTIONS

SECTION PAGE

Sec. 1	
" 2	
" 3	
" 4	
" 5	
" 6	
" 7	
" 8	
" 9	
" 10	
" 11	
" 12	
" 13	
" 14	
" 15	
" 16	
" 17	
" 18	
" 19	
" 20	
" 21	
" 22	
" 23	
" 24	
" 25	
" 26	
" 27	
" 28	
" 29	
" 30	
" 31	
" 32	
" 33	
" 34	
" 35	
" 36	

For Convenience of Auditor in Showing Boundaries of School Districts

Township No. 143 Range No. 25 Mer. P. M.



Returns Showing Grain Received in or Handled by Elevators, Warehouses and Mills in the _____ of _____ in the County of _____ for the Year Ending May 1, 1953.

NAMES OF OWNERS	ADDRESS	Bushels of Wheat	Bushels of Soy Beans	Bushels of Flax	Total No. of Bushels of Wheat, Soy Beans and Flax	Tax of $\frac{1}{4}$ Mill per Bushel		Bushels of Corn	Bushels of Barley	Bushels of Rye	Bushels of Oats	Bushels of Buckwheat	Bushels of all Other Grains	Total No. Bushels of Corn, Barley, Rye, Oats, Buckwheat and all Other Grains	Tax of $\frac{1}{4}$ Mill per Bushel		Total Tax		REMARKS		
						Dollars	Cts.								Dollars	Cts.	Dollars	Cts.			

Note * Assessors will not fill these Columns

TABULAR SCHEDULE OF VALUATIONS, RATES AND TAXES

LEVIED IN THE Town OF Loney

COUNTY OF CASS, STATE OF MINNESOTA

NAME OF OWNER

Main data table with columns for School District No., Valuation by School Districts, Rate of State Taxes, Rate of County Taxes, Rate of Town Taxes, Rate of School Taxes, and Taxes Levied.

State of Minnesota, COUNTY OF CASS. Auditor of said County and State aforesaid, do hereby certify that the foregoing is a true and correct Schedule, showing the valuation of all the taxable property, in the Town of Loney, in said County, the several rates of Taxation and Totals of the several Tax Funds levied thereon for the year A. D. 1953.

Witness my hand and official seal, this 31st day of December, A. D. 1953. L. C. Peterson, County Auditor.

SEAL

Total Number of Acres 5264.81. Total Levy, \$ 3542.92.

Total Taxes Real Estate 2675.94, Pers. Prop. 866.98, Total 3542.92.

Assessment of T

COLLECTIONS OF TAXES OF 1953

Town OF Torrey

CASS COUNTY, MINNESOTA

FUNDS	MARCH SETTLEMENT 1954	JUNE SETTLEMENT 1954	NOV. SETTLEMENT 1954	Amount Collected from Nov. 1953 to First Monday in Jan. 1954	REDUCTIONS	Total Reductions and Collected	BALANCE UNCOLLECTED	ADDITIONS	Total Uncollected to First Monday in January, 1954
State—Non-Homestead	1707	1756	656	46					
State—Homestead	2115	4244	1843	79					
County Revenue	11336	22748	9877	425					
County Road and Bridge	6369	12781	5549	239					
County Welfare	20236	40669	17633	758					
County Bond and Interest	4282	8573	3731	160					
R. & B. Linking	801	1608	699	30					
Town Revenue	1442	2884	1256	54					
Town Road and Bridge	4406	8812	3839	165					
Town Drain	401	804	349	15					
Town State Loan									
School Local 1 Mill	400	804	349	15					
School Special	15700	25611	9996	600					
School State Loan									
Deficiency	6656	15680	9401	600					
Tuition									
Transportation	801	1608	699	30					
C. O.	2496	5879	3525	225					
	19148	154661	69400	3441					

	SCHOOL DISTRICT NO.	LOCAL 1 MILL	SPECIAL	STATE LOAN	Deficiency	Transport.	C. O.	TOTALS
MARCH SETTLEMENT	A U No U Jt. 6	39 127 234	790 5876 9734		1580 5876	79 254 468	592 4909	3080 12437 10536
	Totals	400	15700		6656	801	2496	26053
JUNE SETTLEMENT	A U No U Jt. 6	368 24 412	7366 947 12297		14732 948	737 47 824	5524 355	28727 2322 18533
	Totals	804	25611		15680	1608	5879	49582
NOVEMBER SETTLEMENT	A U No U Jt. 6	114 210 25	4788 4195 2013		8390 1011	228 419 57	3146 379	5130 16360 2479
	Totals	349	9996		9401	698	3525	23969
NOVEMBER to JANUARY	No U	15	600		600	30	225	1470
	Totals	15	600		600	30	225	1470
ADDITIONS	School District No.							
	Totals							
REDUCTIONS	School District No.							
	Totals							

Assessment Roll and Tax List of Real Property in the *Town of Torrey*

Cass County, Minnesota, for Taxes for the Year 1953.

IN WHOSE NAME ASSESSED	TO WHOM TRANSFERRED	DESCRIPTION OF PROPERTY			TRUE AND FULL VALUATIONS				ASSESSED VALUATIONS					FINAL EQUALIZED VALUE	VALUATIONS BY SCHOOL DISTRICTS AS EQUALIZED BY DEPARTMENT OF TAXATION						Taxes	PAID	WHEN PAID	Number of Receipts	March Settlement 1954	June Settlement 1954	November Settlement 1954	Penalty	Collections to First Monday in January 1955	Penalty	Delinquent on First Monday in January 1955	Total Delinquent Tax and Penalty	REMARKS												
		SUBDIVISION	Sec. or Lot	Town or Range	Number of Acres of Land	LAND Exclusive of Structures and Improvements	BUILDINGS and Other Structures	MACHINERY Permanently Attached to Real Estate	TOTAL True and Full Value	RURAL		ALL OTHER			MACHINERY Permanently Attached to Real Estate	TOTAL ASSESSED VALUE	Total Assessed Value as Equalized by the Board of Review	District		State Tax on Non-Homestead														SPECIAL TAXES	TOTAL TAXES	PAID	WHEN PAID	March Settlement 1954	June Settlement 1954	November Settlement 1954	Penalty	Collections to First Monday in January 1955	Penalty	Delinquent on First Monday in January 1955	Total Delinquent Tax and Penalty
										Homestead Up to \$4,000 20%	Over \$4,000 and Non-Homestead 33 1/3%	Homestead Up to \$4,000 25%	Over \$4,000 and Non-Homestead 40%					No.	No.																										
<i>James H. Lura A. Gibson</i>		N 1/4 of N E 1/4		15 1/2 25	40	<i>OK</i>														1		55	9.54	95.4	1st Half Paid	MAY 31 1954																			
"	"	N W 1/4 of N E 1/4			40	"														2		72	12.48	124.8	2nd Half Paid	AUG 5 1954																			
"	"	SW 1/4 of N E 1/4			42	"														3		32	5.54	55.4	1st Half Paid	MAY 31 1954																			
State of Minnesota		SE 1/4 of N E 1/4																		4																									
																				5																									
<i>James H. Lura A. Gibson</i>		N E 1/4 of N W 1/4			40	"														6		164	28.42	284.2	2nd Half Paid	AUG 5 1954																			
"	"	N W 1/4 of N W 1/4			40	"														7		519	10.22	1022	1st Half Paid	MAY 31 1954																			
U. S. of America		SW 1/4 of N W 1/4 <i>less 10 acres</i>																		8																									
U. S. of America		SE 1/4 of N W 1/4																		9																									
																				10																									
U. S. of America		N E 1/4 of S W 1/4																		11																									
U. S. of America		N W 1/4 of S W 1/4 <i>less 5 acres</i>																		12																									
U. S. of America		SW 1/4 of S W 1/4																		13																									
U. S. of America		SE 1/4 of S W 1/4																		14																									
State of Minnesota		<i>SW 1/4 of NW 1/4 of NW 1/4 (10 acres)</i>																		15																									
State of Minnesota		<i>SW 1/4 of NW 1/4 of NW 1/4 (5 acres)</i>																		16																									
State of Minnesota		NE 1/4 of SE 1/4																		17																									
U. S. of America		NW 1/4 of SE 1/4																		18																									
U. S. of America		SW 1/4 of SE 1/4																		19																									
State of Minnesota		SE 1/4 of SE 1/4																		20																									

6200

7382

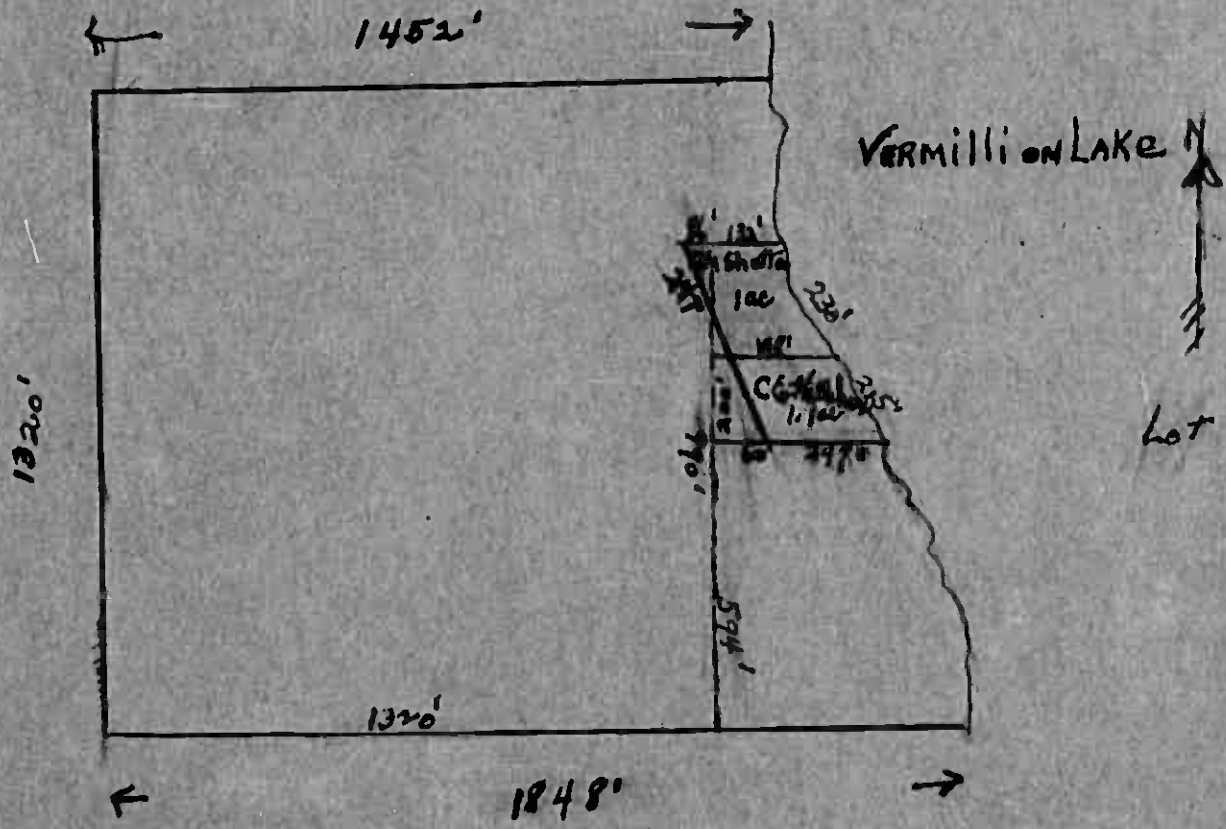
6620

6620

3310

3310

Lot 3, 29-143-25



Lot 3, 29-143-25

