

ASSESSMENT & TAX LIST - 1962

Thunder Lake







**SUMMARY OF TAX COLLECTION**

Original Levy	- - - - -	\$ 21382.68	
Additions	- - - - -	\$ 3.20	
		\$	
Abatements	- - - - -	\$ 231.44	
		\$ 21,155.24	

**COLLECTIONS**

March Settlement	- - - - -	\$ 2015.78	
June Settlement	- - - - -	\$ 11,143.09	
November Settlement	- - - - -	\$ 5872.23	
January Settlement	- - - - -	\$ 165.32	\$ 19,196.42
		\$	
Over Collected	- - - - -	\$ 21.96	
Under Collected	- - - - -	\$	
Delinquent	- - - - -	\$ 1981.28	\$ 21,155.74
Total	- - - - -	\$	

(50)

Real Estate  
 Plat of  
 P.M. 6  
 Del Ray  
 Point  
 Terrace  
 Bart Birchwood  
 Beach  
 Oak Lawn  
 Oak Park  
 Beaches  
 State  
 Sid  
 Dooly Trail  
 Dooly Pass







COLLECTIONS OF TAXES OF 1962, Town OF Thunder Lake, CASS COUNTY, MINNESOTA

FUNDS	MARCH SETTLEMENT 19.62	JUNE SETTLEMENT 19.63	NOV. SETTLEMENT 19.63	Amount Collected from Nov. 19.61 to First Monday in Jan. 19.62	REDUCTIONS	Total Reductions and Collected	BALANCE UNCOLLECTED	ADDITIONS	Total Uncollected to First Monday in January, 19.62
State-Non-Homestead,	35 10	318 53	167 87	570					
State-Homestead,	38 84	400 89	203 63	588					
County Revenue,	280 02	1562 86	815 42	2386					
County Road and Bridge,	174 63	974 66	508 53	1488					
County Welfare,	434 30	3423 97	1264 70	3701					
County Bond Interest,	7 95	44 35	23 14	68					
Welf. Exp.	119 36	666 18	347 58	1017					
C.H. Exp.	17 46	97 47	50 85	189					
PERC	46 19	257 80	134 50	394					
Town Revenue,	32 74	182 76	95 35	277					
Town Road and Bridge,	84 26	470 27	245 36	718					
Town State Loan,									
PERC	45 13	257 95	131 46	384					
C.O.	33 79	188 59	98 40	288					
School Local 1 Mill,									
School Special,	372 89	1 666 89	929 89	2003					
School State Loan,									
Deficiency	277 14	1 546 78	807 03	2361					
Tuition									
Transportation									
Civ. Exp.	3 23	18 03	9 41	28					
Agric. Assn.	4 37	24 35	12 71	38					
Gramp.	8 38	46 77	24 40	72					
	20 15 78	11 143 09	5872 23	16532					

	SCHOOL DISTRICT NO.	LOCAL 1 MILL	SPECIAL	STATE LOAN	Deficiency	C. O.	PERC	B. & G.	TOTALS
MARCH SETTLEMENT	School District No.								
	118a		63 70		80 87	9 86	13 17		167 60
	1187a		309 19		196 27	23 93	31 96		561 35
	Totals		372 89		277 14	33 79	45 13		728 95
JUNE SETTLEMENT	School District No.								
	118a		769 77		977 30	119 16	159 19		2 025 42
	1187a		897 12		569 48	69 43	92 76		1 628 79
	Totals		1 666 89		1 546 78	188 59	251 95		3 654 21
NOVEMBER SETTLEMENT	School District No.								
	118a		341 43		433 48	52 85	70 61		898 37
	1187a		588 46		373 55	45 55	60 85		1 068 41
	Totals		929 89		807 03	98 40	131 46		1 966 78
NOVEMBER to JANUARY	School District No.								
	118a		17 18		21 80	206	355		451 9
	1187a		285		181	22	29		517
	Totals		2003		2361	288	384		5036
ADDITIONS	School District No.								
	Totals								
REDUCTIONS	School District No.								
	Totals								

Plat of  
 P. P. 6  
 Point  
 Del Ray  
 Terrace  
 Birchwood  
 Park  
 Oak Lawn  
 Beach  
 Oak Park  
 St.  
 Barndale  
 Del Ray  
 Red State  
 Coolay Trail  
 Duoc-  
 Pass



Assessor's Return of Exempt Real Property in the \_\_\_\_\_ of \_\_\_\_\_ County of \_\_\_\_\_, Minnesota, for the Year 1962

FORM 2 MILLER-DAVIS CO., MINNEAPOLIS

NAMES OF OWNERS	DESCRIPTION SUBDIVISION	Sec. or Lot	Town or Block	Range	No of Acres		FOR WHAT PURPOSE USED	TRUE AND FULL VALUATIONS			ASSESSED VALUATIONS		REMARKS	
					Acres	100ths		LAND Exclusive of Structures and Improvements Dollars	BUILDINGS and Other Structures Dollars	MACHINERY Permanently Attached to Real Estate Dollars	TOTAL True and Full Value Dollars	Rural		All
												Including Machinery 33 1/3%		Other 40%
Thunder Lake Township	SW 1/4 NW 1/4	4	140	26	40		Town public dumps	120			120	40		
Thunder Lake Township	East Lot 2 part	3	140	26			Town hall	45	450		495	165		
Thunder Lake Township	NE 1/4 NE 1/4 Sec 27	27	140	26			Town public dumps	120			120	40		

Cooly Trail  
 Duob-Tass  
 Ogle Park  
 Beaches  
 Oak Park  
 Beach  
 Oak Lawn  
 Bar  
 Birchwood  
 Terrace  
 Del Rey  
 Point  
 Plat of  
 P.P. 6







Assessment Roll and Tax List of Real Property in the Town of Thunder Lake

Cass County, Minnesota, for Taxes for the Year 1962.

Form SCD MILLER-DAVIS CO., MINNEAPOLIS

\* Indicate Type of Property: R-Residential, C-Commercial, I-Industrial, F-Farm, L-Lakeshore, T-Timber, M-Mineral

Table with columns: IN WHOSE NAME ASSESSED, DESCRIPTION OF PROPERTY, TRUE AND FULL VALUATIONS, ASSESSED VALUATIONS, FINAL EQUALIZED VALUE.

Table with columns: VALUATIONS BY SCHOOL DISTRICTS AS EQUALIZED BY DEPARTMENT OF TAXATION, Tax including State Homestead, State Tax on Non-Homestead, SPECIAL TAXES, TOTAL TAXES, PAID, WHEN PAID, Number of Receipt, March Settlement 1963, June Settlement 1963, Penalty, November Settlement 1963, Penalty, Collections to First Monday in January 1964, Penalty, Delinquent on First Monday in January 1964, Total Delinquent Tax and Penalty, REMARKS.

Vertical text on the right edge of the page, including 'Pat of 27', 'P.F. 6', 'Del Ray Point', 'Bar', 'Barwood Terrace', 'Oak Park Beach', 'Oak Park Dr', 'Sh. Gehanes', 'Trail Pass'.











Assessment Roll and Tax List of Real Property in the Town of Thunder Lake, Minnesota

Form SCD MILLER-DAVIS CO., MINNEAPOLIS

\* Indicate Type of Property: R-Residential, C-Commercial, I-Industrial, U-Utility, F-Farm, L-Lakeshore, T-Timber, M-Mineral

Cass County, Minnesota, for Taxes for the Year 1962.

Table with columns: IN WHOSE NAME ASSESSED, DESCRIPTION OF PROPERTY, TRUE AND FULL VALUATIONS, ASSESSED VALUATIONS, VALUATIONS BY SCHOOL DISTRICTS AS EQUALIZED BY DEPARTMENT OF TAXATION, TAXES, PAID, WHEN PAID, Number of Receipt, March Settlement 1963, June Settlement 1963, November Settlement 1963, Collections to First Monday in January 1964, Delinquent on First Monday in January 1964, Total Delinquent Tax and Penalty, REMARKS.











Assessment Roll and Tax List of Real Property in the Town of Thunder Lake

Form 5CD MILLER-DAVIS CO., MINNEAPOLIS

Table with columns: IN WHOSE NAME ASSESSED, DESCRIPTION OF PROPERTY, TRUE AND FULL VALUATIONS, ASSESSED VALUATIONS, FINAL EQUALIZED VALUE. Includes handwritten entries for Eleanore L. Bluhm, Emma A. Morse, Arthur R. Bluhm, Howard C. Bluhm.

Cass County, Minnesota, for Taxes for the Year 1962.

Table with columns: SOLD FOR TAXES, VALUATIONS BY SCHOOL DISTRICTS AS EQUALIZED BY DEPARTMENT OF TAXATION, Tax Including State Homestead, State Tax on Non-Homestead, SPECIAL TAXES, TOTAL TAXES, PAID, WHEN PAID, Number of Receipt, March Settlement 1963, June Settlement 1963, November Settlement 1963, Penalty, Collections to First Monday in January 1964, Delinquent on First Monday in January 1964, Total Delinquent Tax and Penalty, REMARKS. Includes handwritten entries for 1-5 and 20.



100' x 500' of Lot 2 &  $\frac{1}{4}$  ac. of Lot 3  
Sec. 6-140-26

	625'	625'	625'	625'	625'	625'	625'	625'
	A	B	C	D	E	F	G	H
100'	Howard Bluhm	Arthur R. Bluhm	Earl M. Bluhm	Earl M. Bluhm	Eleanor Bluhm	Emma Morse	E. & James Morse	E. Bluhm
	.14 ac.	.14 ac.	.14 ac.	.14 ac.	.14 ac.	.14 ac.	.14 ac.	.14 ac.

GOVT LOT 2

GOVT LOT 3

S.W. cor. of  
Gov't Lot 2

TREHIFE LAKE







Assessment Roll and Tax List of Real Property in the Town of Thunder Lake

Form 500 - MILLER-DAVIS CO., MINNEAPOLIS

Cass County, Minnesota, for Taxes for the Year 1962.

Table with columns: IN WHOSE NAME ASSESSED, DESCRIPTION OF PROPERTY, TRUE AND FULL VALUATIONS, ASSESSED VALUATIONS, FINAL EQUALIZED VALUE. Includes handwritten entries for various property owners like Cepel D. & E. M. Maglein, John & Marie Smudberg, etc.

Table with columns: VALUATIONS BY SCHOOL DISTRICTS AS EQUALIZED BY DEPARTMENT OF TAXATION, TAX INCLUDING STATE HOMESTEAD, SPECIAL TAXES, TOTAL TAXES, PAID, WHEN PAID, Number of Receipt, March Settlement, June Settlement, Penalty, November Settlement, Collections to First Monday in January, Delinquent on First Monday in January, Total Delinquent Tax and Penalty, REMARKS. Includes handwritten entries for tax payments and dates.



Assessment Roll and Tax List of Real Property in the Town of Thunder Lake

\* Indicate Type of Property: R-Residential, C-Commercial, I-Industrial, U-Utility, F-Farm, L-Lakeshore, T-Timber, M-Mineral

Cass County, Minnesota, for Taxes for the Year 1962.

Table with columns: IN WHOSE NAME ASSESSED, DESCRIPTION OF PROPERTY, TRUE AND FULL VALUATIONS, ASSESSED VALUATIONS, and FINAL EQUALIZED VALUE. Includes entries for Robert & Elaine Waterhouse, Harlan & Mary Louise Nygaard, Joseph & Jessie Henke, Louis C. & Anna C. Henke, Frank Henke, and Delton F. & Florence M. Wabig.

Table with columns: VALUATIONS BY SCHOOL DISTRICTS AS EQUALIZED BY DEPARTMENT OF TAXATION, TAXES, PAID, WHEN PAID, and REMARKS. Includes tax amounts and payment dates for various properties.

Vertical text on the right edge of the page, including 'Cass County, Minnesota' and 'Plat of ...'.



GOVT LOT 4  
SEC. 8-140-26

NYGARD

267.3'

WATERHOUSE

267.3'

L. A. HENKE

267.3'

L. & A. HENKE

267.3'

FRANK X. HENKE

Block  
2

3

2

1

30'

150'

300'

200'

50'

30'

THUNDER AVE.

ROAD 232  
117-89

280'

26

25

24

23

22

21

20

19

18

17

16

15

14

B  
L  
O  
C  
K  
1

13

12

11

10

9

8

7

6

5

4

3

2

1



Assessment Roll and Tax List of Real Property in the

Town of Thunder Lake

Cass County, Minnesota, for Taxes for the Year 1962.

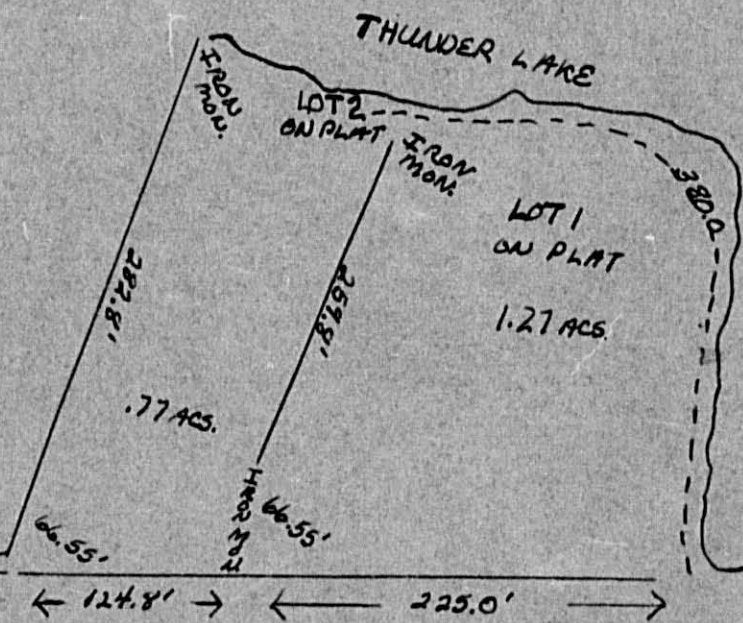
\* Indicate Type of Property: R-Residential, C-Commercial, I-Industrial, U-Utility, F-Farm, L-Lakeshore, T-Timber, M-Mineral

Table with columns: IN WHOSE NAME ASSESSED, DESCRIPTION OF PROPERTY, TRUE AND FULL VALUATIONS, ASSESSED VALUATIONS, VALUATIONS BY SCHOOL DISTRICTS AS EQUALIZED BY DEPARTMENT OF TAXATION, TAXES, PAID, WHEN PAID, etc.

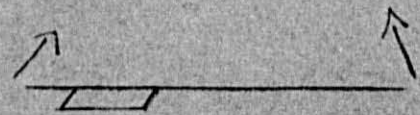


14.58 ACS. NOW  
PLAT OF P. 7. 6

GOVT LOT 3  
SEC. 9-140-26



1/4 COR. POST FOUND  
IN PLACE









Assessment Roll and Tax List of Real Property in the Town of Thunder Lake, Cass County, Minnesota, for Taxes for the Year 1962.

\* Indicate Type of Property: R-Residential, C-Commercial, I-Industrial, U-Utility, F-Farm, L-Lakeshore, T-Timber, M-Mineral

Table with columns: IN WHOSE NAME ASSESSED, DESCRIPTION OF PROPERTY, TRUE AND FULL VALUATIONS, ASSESSED VALUATIONS, VALUATIONS BY SCHOOL DISTRICTS AS EQUALIZED BY DEPARTMENT OF TAXATION, TAXES, PAID, WHEN PAID, Number of Receipt, March Settlement 1963, June Settlement 1963, November Settlement 1963, Collections to First Monday in January 1964, Delinquent on First Monday in January 1964, Total Delinquent Tax and Penalty, REMARKS.

Edward G. + Jennie S. Adams  
J.C. Huffman + H.W. Bloom  
George + Helen Lowe

Ambrose Schibilla  
Oscar M. L. + Luella A. Olson  
John L. + Louise E. Laing  
Edwin S. + Leah M. Miller

Emmett + Mary Kruse  
" " "  
" " "  
James J. McBride

Plat of 27  
P.M. 6  
Point  
Barthwood  
Beach  
Cass  
Sh  
Sis  
Beaches



















Assessment Roll and Tax List of Real Property in the Town of Thunder Lake

Cass County, Minnesota, for Taxes for the Year 1962.

Form SCD MILLER-DAVIS CO., MINNEAPOLIS

\* Indicate Type of Property: R-Residential, C-Commercial, I-Industrial, U-Utility, F-Farm, L-Lakeshore, T-Timber, M-Mineral

Table with columns: IN WHOSE NAME ASSESSED, DESCRIPTION OF PROPERTY, TRUE AND FULL VALUATIONS, ASSESSED VALUATIONS, and FINAL EQUALIZED VALUE. Includes entries for James J. McBride, Gordon Gieske, Clarence & Gladys Hopper, etc.

Table with columns: VALUATIONS BY SCHOOL DISTRICTS AS EQUALIZED BY DEPARTMENT OF TAXATION, TAX INCLUDING STATE HOMESTEAD, SPECIAL TAXES, TOTAL TAXES, PAID, WHEN PAID, and REMARKS. Includes entries for H 48, H 300, H 219, etc.

(Cont. Next Page)

3.00 min. Per add.



Assessment Roll and Tax List of Real Property in the Town of Thunder Lake, Cass County, Minnesota, for Taxes for the Year 1962.

Form SCD - MILLER-DAVIS CO., MINNEAPOLIS

\* Indicate Type of Property: R-Residential, C-Commercial, I-Industrial, U-Utility, F-Farm, L-Lakeshore, T-Timber, M-Mineral

Table with columns: IN WHOSE NAME ASSESSED, DESCRIPTION OF PROPERTY, TRUE AND FULL VALUATIONS, ASSESSED VALUATIONS, and FINAL EQUALIZED VALUE. Includes handwritten entries for Gladys M. Schutz, Roy C. & Evelyn B. Williams, Clifford H. & Hazella C. Thomas, etc.

Cass County, Minnesota, for Taxes for the Year 1962.

Table with columns: VALUATIONS BY SCHOOL DISTRICTS AS EQUALIZED BY DEPARTMENT OF TAXATION, TAX INCLUDING STATE HOMESTEAD, SPECIAL TAXES, TOTAL TAXES, PAID, WHEN PAID, Number of Receipt, March Settlement, June Settlement, November Settlement, Penalty, Collections to First Monday in January 1964, Delinquent on First Monday in January 1964, Total Delinquent Tax and Penalty, REMARKS. Includes handwritten entries for Gladys M. Schutz, Roy C. & Evelyn B. Williams, etc.







Assessment Roll and Tax List of Real Property in the Town of Thunder Lake

Form SCD - MILLER-DAVIS CO., MINNEAPOLIS

\* Indicate Type of Property: R-Residential, C-Commercial, I-Industrial, U-Utility, F-Farm, L-Lakeshore, T-Timber, M-Mineral

Table with columns: IN WHOSE NAME ASSESSED, DESCRIPTION OF PROPERTY, TRUE AND FULL VALUATIONS, ASSESSED VALUATIONS, FINAL EQUALIZED VALUE.

Cass County, Minnesota, for Taxes for the Year 1962.

Table with columns: VALUATIONS BY SCHOOL DISTRICTS AS EQUALIZED BY DEPARTMENT OF TAXATION, TAX INCLUDING STATE HOMESTEAD, SPECIAL TAXES, TOTAL TAXES, PAID, WHEN PAID, Number of Receipt, March Settlement 1963, June Settlement 1963, Penalty, November Settlement 1963, Penalty, Collections to First Monday in January 1964, Delinquent on First Monday in January 1964, Total Delinquent Tax and Penalty, REMARKS.

Vertical text on the right edge of the page, including 'Plat of J...', 'P.R. 6', and other marginal notes.



















Assessment Roll and Tax List of Real Property in the Town of Thunder Lake

\* Indicate Type of Property: R-Residential, C-Commercial, I-Industrial, U-Utility, F-Farm, L-Lakeshore, T-Timber, M-Mineral

Form 500 MILLER-DAVIS CO., MINNEAPOLIS

Table with columns: IN WHOSE NAME ASSESSED, DESCRIPTION OF PROPERTY, TRUE AND FULL VALUATIONS, ASSESSED VALUATIONS, and FINAL EQUALIZED VALUE. Includes handwritten entries for various property owners like Clifford H. & Hazel L. Thomas and John H. & Charlotte Larson.

Cass County, Minnesota, for Taxes for the Year 1962.

Table with columns: VALUATIONS BY SCHOOL DISTRICTS AS EQUALIZED BY DEPARTMENT OF TAXATION, Tax Including State Homestead, State Tax on Non-Homestead, SPECIAL TAXES, TOTAL TAXES, PAID, WHEN PAID, Number of Receipt, March Settlement, June Settlement, November Settlement, Collections to First Monday in January 1964, Delinquent on First Monday in January 1964, Total Delinquent Tax and Penalty, and REMARKS. Includes handwritten notes and calculations.

Vertical text on the right edge of the page, including 'Plat of 21' and 'Del Ray Point'.



Assessment Roll and Tax List of Real Property in the Town of Thunder Lake

\* Indicate Type of Property: R-Residential, C-Commercial, I-Industrial, U-Utility, F-Farm, L-Lakeshore, T-Timber, M-Mineral

Cass County, Minnesota, for Taxes for the Year 1962.

Form 5CD MILLER-DAVIS CO., MINNEAPOLIS

Table with columns: IN WHOSE NAME ASSESSED, DESCRIPTION OF PROPERTY, TRUE AND FULL VALUATIONS, ASSESSED VALUATIONS, FINAL EQUALIZED VALUE. Includes entries for Russell W. & Bernadette C. Brimmelbein, Agnes E. Wesche, Thos. F. Grid, Walter O. & Hazel L. Wilmer, James M. & Nancy Felkenor, Albert J. & Anne Zacker, Clifford H. & Hazelle C. Thomas, Franklin L. & Johanna M. Neuman, Patricia T. & Magdalen H. Corrigan, Christopher & Lena H. Willems, Peter George Willems, Christopher N. & Jean H. Willems.

Table with columns: SOLD FOR TAXES, VALUATIONS BY SCHOOL DISTRICTS AS EQUALIZED BY DEPARTMENT OF TAXATION, Tax Including State Homestead, State Tax on Non-Homestead, SPECIAL TAXES, TOTAL TAXES, PAID, WHEN PAID, Number of Receipt, March Settlement 1963, June Settlement 1963, November Settlement 1963, Collections to First Monday in January 1964, Delinquent on First Monday in January 1964, Total Delinquent Tax and Penalty, REMARKS. Includes handwritten notes like 'A NA', '213.00', '21.54', '21.54'.

Vertical text on the right edge of the page, including 'Cass County, Minnesota' and 'Pat of P. 6'.







Assessment Roll and Tax List of Real Property in the Town of Thunder Lake, Cass County, Minnesota, for Taxes for the Year 1962.

Form SCD - MILLER-DAVIS CO., MINNEAPOLIS

\* Indicate Type of Property: R-Residential, C-Commercial, I-Industrial, U-Utility, F-Farm, L-Lakeshore, T-Timber, M-Mineral

Table with columns: IN WHOSE NAME ASSESSED, DESCRIPTION OF PROPERTY, TRUE AND FULL VALUATIONS (LAND, BUILDINGS, MACHINERY, TOTAL), ASSESSED VALUATIONS (RURAL, ALL OTHER), FINAL EQUALIZED VALUE.

Cass County, Minnesota, for Taxes for the Year 1962.

Table with columns: VALUATIONS BY SCHOOL DISTRICTS AS EQUALIZED BY DEPARTMENT OF TAXATION, TAX INCLUDING STATE HOMESTEAD, SPECIAL TAXES, TOTAL TAXES, PAID, WHEN PAID, Number of Receipt, March Settlement, June Settlement, November Settlement, Collections to First Monday in January 1964, Delinquent on First Monday in January 1964, Total Delinquent Tax and Penalty, REMARKS.

Vertical text on the right edge of the page, including 'Plat of...', 'P.P. 6', and other marginal notes.







Assessment Roll and Tax List of Real Property in the Town of Thunder Lake

Form SCD MILLER-DAVIS CO., MINNEAPOLIS

\* Indicate Type of Property: R-Residential, C-Commercial, I-Industrial, U-Utility, F-Farm, L-Lakeshore, T-Timber, M-Mineral

Table with columns: IN WHOSE NAME ASSESSED, DESCRIPTION OF PROPERTY, TRUE AND FULL VALUATIONS, ASSESSED VALUATIONS, and FINAL EQUALIZED VALUE. Includes entries for Melvin J. & Helma E. Smith, State of Minnesota, Robert Genevieve & Wm. A. & Susan Crandall, and Lester & Daisy Sanders.

Cass County, Minnesota, for Taxes for the Year 1962.

Table with columns: SOLD FOR TAXES, VALUATIONS BY SCHOOL DISTRICTS AS EQUALIZED BY DEPARTMENT OF TAXATION, Tax including State Homestead, State Tax on Non-Homestead, SPECIAL TAXES, TOTAL TAXES, PAID, WHEN PAID, Number of Receipt, March Settlement 1963, June Settlement 1963, November Settlement 1963, Penalty, Collections to First Monday in January 1964, Delinquent on First Monday in January 1964, Total Delinquent Tax and Penalty, and REMARKS. Includes handwritten notes and dates like 'PAID IN FULL OCT 1 1963'.

Vertical text on the right edge of the page, including 'Patrol', 'Beach', 'Lorraine', 'Pat of P.', 'P.F. 6'.



Assessment Roll and Tax List of Real Property in the Town of Thunder Lake

\* Indicate Type of Property: R-Residential, C-Commercial, I-Industrial, U-Utility, F-Farm, L-Lakeshore, T-Timber, M-Mineral

Form 5CD - MILLER-DAVIS CO., MINNEAPOLIS

Table with columns: IN WHOSE NAME ASSESSED, DESCRIPTION OF PROPERTY, TRUE AND FULL VALUATIONS, ASSESSED VALUATIONS, FINAL EQUALIZED VALUE. Includes handwritten entries for various property owners like Albert E. & Eleanor H. Schultstad.

Cass County, Minnesota, for Taxes for the Year 1962.

Table with columns: VALUATIONS BY SCHOOL DISTRICTS AS EQUALIZED BY DEPARTMENT OF TAXATION, TAXES, PAID, WHEN PAID, Number of Receipt, March Settlement, June Settlement, November Settlement, Collections to First Monday in January 1964, Delinquent on First Monday in January 1964, Total Delinquent Tax and Penalty, REMARKS. Includes handwritten entries for various property owners.

(Cont. Next Page)

Vertical text on the right edge of the page, including 'Plat of D...', 'P.F. 6', and other marginal notes.



Assessment Roll and Tax List of Real Property in the Town of Thunder Lake, Cass County, Minnesota, for Taxes for the Year 1962.

\* Indicate Type of Property: R-Residential, C-Commercial, I-Industrial, U-Utility, F-Farm, L-Lakeshore, T-Timber, M-Mineral

Form SCD - MILLER-DAVIS CO., MINNEAPOLIS

Table with columns: IN WHOSE NAME ASSESSED, DESCRIPTION OF PROPERTY, TRUE AND FULL VALUATIONS, ASSESSED VALUATIONS, FINAL EQUALIZED VALUE. Includes handwritten entries for Andrew P. & Marie Kisch, Doyle R. & Leulah A. Shank, Leo B. Brown, John F. Herbach, Lawrence E. & Helen E. Lambert, State of Minnesota, Agnor C. & Tara A. Knudson, Andrew & Lillian A. Danielson, Ernest B. Swanson, S. O. Severson, Willis & Alta H. Copeman, J. C. White, Michael & Lillian J. Fry, Walter H. Martenson.

Table with columns: VALUATIONS BY SCHOOL DISTRICTS AS EQUALIZED BY DEPARTMENT OF TAXATION, TAX INCLUDING STATE HOMESTEAD, SPECIAL TAXES, TOTAL TAXES, PAID, WHEN PAID, Number of Receipt, March Settlement 1963, June Settlement 1963, November Settlement 1963, Collections to First Monday in January 1964, Delinquent on First Monday in January 1964, Total Delinquent Tax and Penalty, REMARKS. Includes handwritten entries for 1 PAID IN FULL MAY 20 1963, 2 PAID IN FULL MAY 20 1963, 3 PAID IN FULL MAY 8 1963, 4 PAID IN FULL MAY 24 1963, 6 PAID IN FULL MAY 1 1963, 7 2nd HALF PAID SEP 6 1963, 8 1st HALF PAID MAY 20 1963, 10 PAID IN FULL MAY 31 1963, 11 PAID IN FULL MAY 1 1963, 13 PAID IN FULL MAY 13 1963, 14 PAID IN FULL MAY 13 1963, 16 2nd HALF PAID SEP 5 1963, 17 1st HALF PAID MAY 31 1963.

Vertical text on the right edge of the page, including 'Cass County, Minnesota' and 'Thunder Lake'.



Assessment Roll and Tax List of Real Property in the Town of Thunder Lake

\* Indicate Type of Property: R-Residential, C-Commercial, I-Industrial, U-Utility, F-Farm, L-Lakeshore, T-Timber, M-Mineral

Form SCD MILLER-DAVIS CO., MINNEAPOLIS

Cass County, Minnesota, for Taxes for the Year 1962.

IN WHOSE NAME ASSESSED	DESCRIPTION OF PROPERTY				No. School District	Indicate Homestead Yes or No	Agricultural Use Yes or No	Indicate Type of Property	TRUE AND FULL VALUATIONS													FINAL EQUALIZED VALUE
	SUBDIVISION	Sec. or Lot	Town or Block	Rng.					Number of Acres of Land		LAND Exclusive of Structures and Improvements	BUILDINGS and Other Structures	MACHINERY Permanently Attached to Real Estate	TOTAL True and Full Value	RURAL					TOTAL ASSESSED VALUE	Total Assessed Value as Equalized by the Board of Review	
									Dollars	Dollars					Homestead Up to \$4,000 20%	Over \$4,000 and Non-Homestead 33 1/2%	Timber Land Class 3e 20%	Homestead Up to \$4,000 25%	Over \$4,000 and Non-Homestead 40%			
C. H. Thomas	1				140 26	75	118	No	Agri. R	45	693							246				
Clifford Archie Thomas	2				46 90			No	Agri. T	420								140				
Arnold H. & Mae J. Maas	3				50 40			Yes	Agri. T	500					100			100				
" " "	4				9 90			Yes	Agri. R	300	2032				466			466				
Clifford Archie Thomas	5				1			No	Agri. L	67	1335				311			311				
State of Minnesota	6																	22				
State of Minnesota	7																	15				
State of Minnesota	8																					
State of Minnesota	9																					
Ernest L. Swanson	10				15			Yes	Agri. R	135	420				111			111				
State of Minnesota	11																	74				
State of Minnesota	12																					
State of Minnesota	13																					
State of Minnesota	14																					
Frank & Ruby Graham	15				1 50			No	Agri. L	67					22			22				
Arnold H. & Mae J. Maas	16				33 85			Yes	Agri. L	600					120			120				
" " "	17				40			Yes	Agri. T	400					64			64				
State of Minnesota	18																					
Max E. & Helen C. Allen & Fester E. & Thelma Stover	19				39 85			No	Agri. R	330					110			110				
Bolton & Freda Lind	20				224 90			Yes	Agri. L	135	1380				303			303				
										90	920				202			202				
										2470	3017				5487			5487				
										2919	4525				7444			7444				
															831			831				
															444			444				
															1275			1275				
															1704			1704				

SOLD FOR TAXES	VALUATIONS BY SCHOOL DISTRICTS AS EQUALIZED BY DEPARTMENT OF TAXATION						Tax Including State Homestead	State Tax on Non-Homestead	SPECIAL TAXES	SPECIAL TAXES	TOTAL TAXES	PAID	WHEN PAID	Number of Receipt	March Settlement 1963	June Settlement 1963	Penalty 1963	November Settlement 1963	Penalty 1963	Collections to First Monday in January 1964	Penalty 1964	Delinquent on First Monday in January 1964	Total Delinquent Tax and Penalty	REMARKS	
	District No.	District No.	District No.	District No.	District No.	District No.																			
	Rate	Rate	Rate	Rate	Rate	Rate																			
1																									
2																									
3																									
4																									
5																									
6																									
7																									
8																									
9																									
10																									
11																									
12																									
13																									
14																									
15																									
16																									
17																									
18																									
19																									
20																									

Total - 11624  
 11653  
 11629  
 11652  
 21788  
 23225  
 9094















Assessment Roll and Tax List of Real Property in the Town of Thunder Lake

\* Indicate Type of Property: R-Residential, C-Commercial, I-Industrial, U-Utility, F-Farm, L-Lakeshore, T-Timber, M-Mineral

Form SCD - MILLER-DAVIS CO., MINNEAPOLIS

Table with columns: IN WHOSE NAME ASSESSED, SUBDIVISION, No. School District, Indicate Home-Stead Yes or No, Agri. Rec. Yes or No, Indicate Type of Property, TRUE AND FULL VALUATIONS (LAND, BUILDINGS, MACHINERY, TOTAL), ASSESSED VALUATIONS (RURAL, ALL OTHER), FINAL EQUALIZED VALUE.

Cass County, Minnesota, for Taxes for the Year 1962.

Table with columns: VALUATIONS BY SCHOOL DISTRICTS AS EQUALIZED BY DEPARTMENT OF TAXATION, Tax Including State Homestead, State Tax on Non-Homestead, SPECIAL TAXES, TOTAL TAXES, PAID, WHEN PAID, Number of Receipt, March Settlement 1963, June Settlement 1963, November Settlement 1963, Collections to First Monday in January 1964, Delinquent on First Monday in January 1964, Total Delinquent Tax and Penalty, REMARKS.

Vertical text on the right edge of the page, including 'Cass County, Minnesota' and 'Thunder Lake'.







Assessment Roll and Tax List of Real Property in the Town of Thunder Lake, Minnesota

Cass County, Minnesota, for Taxes for the Year 1962.

Form SCD MILLER-DAVIS CO., MINNEAPOLIS

Main table with columns: IN WHOSE NAME ASSESSED, DESCRIPTION OF PROPERTY, TRUE AND FULL VALUATIONS, ASSESSED VALUATIONS, VALUATIONS BY SCHOOL DISTRICTS AS EQUALIZED BY DEPARTMENT OF TAXATION, TAXES, PAID, WHEN PAID, Number of Receipt, March Settlement 1963, June Settlement 1963, Penalty, November Settlement 1963, Penalty, Collections to First Monday in January 1964, Delinquent on First Monday in January 1964, Total Delinquent Tax and Penalty, REMARKS.

Vertical text on the right edge: Plat of 1/2 Sec 11, Twp 111 N, R. 11 W, Cass Co., Minn. for Birchwood Park, P.P. 6



















Assessment Roll and Tax List of Real Property in the

Town of Thunder Lake

\* Indicate Type of Property: R-Residential, C-Commercial, I-Industrial, U-Utility, F-Farm, L-Lakeshore, T-Timber, M-Mineral

Form 5C - MILLER-DAVIS CO., MINNEAPOLIS

DESCRIPTION OF PROPERTY

Oak Park Beaches

Subdivision: Oak Park Beaches

Acres: 100ths

TRUE AND FULL VALUATIONS

No. School District

Indicate Home-stand Yes or No

Agri. or Rec. Yes or No

Indicate Type of Property

LAND Exclusive of Structures and Improvements

BUILDINGS and Other Structures

MACHINERY Permanently Attached to Real Estate

TOTAL True and Full Value

RURAL

ALL OTHER

MACHINERY Permanently Attached to Real Estate

Seasonal and Recreational Cabins

TOTAL ASSESSED VALUE

Total Assessed Value as Equalized by the Board of Review

FINAL EQUALIZED VALUE

Dollars

Dollars

Dollars

Dollars

Dollars

Dollars

Dollars

Dollars

Dollars

Dollars

Dollars

Dollars

Dollars

Dollars

Dollars

Dollars

Dollars

Dollars

Dollars

Dollars

Dollars

Dollars

Dollars

Dollars

Dollars

Dollars

Dollars

Dollars

Dollars

Dollars

Dollars

Dollars

Dollars

Dollars

Dollars

Dollars

Dollars

Dollars

Dollars

Dollars

Dollars

Dollars

Dollars

Dollars

Dollars

Dollars

Dollars

Dollars

Dollars

Dollars

Dollars

Dollars

Dollars

Dollars

Dollars

Dollars

Dollars

Dollars

Dollars

Dollars

Dollars

Table with columns for IN WHOSE NAME ASSESSED, SUBDIVISION, Sec. of Lot, Town or Block, Rng., Number of Acres of Land, Acres 100ths, No. School District, Indicate Home-stand, Agri. or Rec., Indicate Type of Property, LAND, BUILDINGS, MACHINERY, TOTAL, RURAL, ALL OTHER, MACHINERY, Seasonal and Recreational Cabins, TOTAL ASSESSED VALUE, Total Assessed Value as Equalized by the Board of Review, FINAL EQUALIZED VALUE.

Table with columns for LAND, BUILDINGS, MACHINERY, TOTAL, RURAL, ALL OTHER, MACHINERY, Seasonal and Recreational Cabins, TOTAL ASSESSED VALUE, Total Assessed Value as Equalized by the Board of Review, FINAL EQUALIZED VALUE.

SOLD FOR TAXES

District No.

District No.

District No.

District No.

District No.

District No.

District No.

District No.

District No.

District No.

District No.

District No.

District No.

District No.

District No.

District No.

District No.

District No.

District No.

District No.

District No.

District No.

District No.

District No.

District No.

District No.

District No.

District No.

District No.

District No.

District No.

District No.

District No.

District No.

District No.

District No.

District No.

District No.

District No.

District No.

District No.

District No.

District No.

District No.

District No.

District No.

District No.

District No.

Table with columns for VALUATIONS BY SCHOOL DISTRICTS AS EQUALIZED BY DEPARTMENT OF TAXATION, Tax including State Homestead, State Tax on Non-Homestead, SPECIAL TAXES, TOTAL TAXES, PAID, WHEN PAID, Number of Receipt, March Settlement, June Settlement, Penalty, November Settlement, Penalty, Collections to First Monday in January, Delinquent on First Monday in January, Total Delinquent Tax and Penalty, REMARKS.

Cass County, Minnesota, for Taxes for the Year 1962.

Plat of ... to ...



Assessment Roll and Tax List of Real Property in the Town of Thunder Lake

\* Indicate Type of Property: R-Residential, C-Commercial, I-Industrial, U-Utility, F-Farm, L-Lakeshore, T-Timber, M-Mineral

FORM 50 MILLER-DAVIS CO., MINNEAPOLIS

Cooley Trail Duok-Pass

Oak Park Beaches

Table with columns: IN WHOSE NAME ASSESSED, SUBDIVISION, Sec. or Lot, Town or Block, Rng., Number of Acres of Land, No. School District, Indicate Homestead, Agri. or Non-Agri., Indicate Type of Property, TRUE AND FULL VALUATIONS (LAND, BUILDINGS, MACHINERY, TOTAL), ASSESSED VALUATIONS (RURAL, ALL OTHER), TOTAL ASSESSED VALUE, Total Assessed Value as Equalized by the Board of Review, FINAL EQUALIZED VALUE.

Cass County, Minnesota, for Taxes for the Year 1962.

Table with columns: VALUATIONS BY SCHOOL DISTRICTS AS EQUALIZED BY DEPARTMENT OF TAXATION, SOLD FOR TAXES, Tax Including State Homestead, State Tax on Non-Homestead, SPECIAL TAXES, TOTAL TAXES, PAID, WHEN PAID, Number of Receipt, March Settlement 1963, June Settlement 1963, Penalty, November Settlement 1963, Penalty, Collections to First Monday in January 1964, Penalty, Delinquent on First Monday in January 1964, Total Delinquent Tax and Penalty, REMARKS.

1st to 1st

1st to 1st

1st to 1st

1st to 1st

1st to 1st

1st to 1st

1st to 1st

1st to 1st







Assessment Roll and Tax List of Real Property in the Town of Thunder Lake, Cass County, Minnesota, for Taxes for the Year 1962.

Form 50 MILLER-DAVIS CO., MINNEAPOLIS

\* Indicate Type of Property: R-Residential, C-Commercial, I-Industrial, U-Utility, F-Farm, L-Lakeshore, T-Timber, M-Mineral

Table with columns: IN WHOSE NAME ASSESSED, DESCRIPTION OF PROPERTY, TRUE AND FULL VALUATIONS, ASSESSED VALUATIONS, and FINAL EQUALIZED VALUE. Includes handwritten entries for John Kohanek, Evelyn Leekley, Helen F. O'Malley & Roy Oakland, Michael & Lillian Hetrey, Michael Hetrey, Marjory M. & A. S. Osterder, Jr., Arlin & Rose Damon, and Clara P. Romain.

Table with columns: VALUATIONS BY SCHOOL DISTRICTS AS EQUALIZED BY DEPARTMENT OF TAXATION, TAXES, PAID, WHEN PAID, and REMARKS. Includes handwritten entries for school districts H 9 and H 156, and various tax payment dates and amounts.

Cooley Trail, Oak Park Beaches, Oak Lawn Beach

Plat of 21, P. 6, Fairwood Terrace, Peter's Bay, Thelipe Sand, Bar X



Assessment Roll and Tax List of Real Property in the Town of Thunder Lake

\* Indicate Type of Property: R-Residential, C-Commercial, I-Industrial, U-Utility, F-Farm, L-Lakeshore, T-Timber, M-Mineral

Cass County, Minnesota, for Taxes for the Year 1962.

Coolay Trail Duck-Pass Oak Lawn Beach Oak Park Beaches

Table with columns: IN WHOSE NAME ASSESSED, SUBDIVISION, Sec. or Lot, Town or Block, Ring, Number of Acres of Land, No. School District, Indicate Homestead, Agr. or Rec., Indicate Type of Property, TRUE AND FULL VALUATIONS (LAND, BUILDINGS, MACHINERY, TOTAL), ASSESSED VALUATIONS (RURAL, ALL OTHER, MACHINERY, Seasonal and Recreational Cabins, TOTAL ASSESSED VALUE, Total Assessed Value as Equalized by the Board of Review), FINAL EQUALIZED VALUE.

Table with columns: VALUATIONS BY SCHOOL DISTRICTS AS EQUALIZED BY DEPARTMENT OF TAXATION (District No., Rate, etc.), Tax Including State Homestead, State Tax on Non-Homestead, SPECIAL TAXES, TOTAL TAXES, PAID, WHEN PAID, Number of Receipt, March Settlement, June Settlement, Penalty, November Settlement, Collections to First Monday in January 1964, Delinquent on First Monday in January 1964, Total Delinquent Tax and Penalty, REMARKS.

Bar Y Birchwood Point Plat of 21 Del Rey Point Del Rey Point Terrace Beach Bar Y Birchwood Point Terrace Beach Bar Y Birchwood Point Terrace Beach



















Assessment Roll and Tax List of Real Property in the Town of Thunder Lake, Minnesota

\* Indicate Type of Property: R-Residential, C-Commercial, I-Industrial, U-Utility, F-Farm, L-Lakeshore, T-Timber, M-Mineral

Form 50 MILLER-DAVIS CO., MINNEAPOLIS

Cooley Trail, Duck-Pass, Oak Park Beaches, Oak Lawn Beach, Birchwood Terrace, Del Ray Point

Table with columns: IN WHOSE NAME ASSESSED, DESCRIPTION OF PROPERTY, TRUE AND FULL VALUATIONS, ASSESSED VALUATIONS, and FINAL EQUALIZED VALUE. Includes handwritten entries for Charles W. Elliott and H. Ray + Ardelle C. Chase.

Cass County, Minnesota, for Taxes for the Year 1962.

Table with columns: VALUATIONS BY SCHOOL DISTRICTS AS EQUALIZED BY DEPARTMENT OF TAXATION, TAXES, PAID, WHEN PAID, and REMARKS. Includes handwritten entries for 'PAID IN FULL' and various tax amounts.

Pat A. Peterson to Peter's Bay, Treeline Sand Beach, Bar X Ranch, Plat of P.P. 6



Assessment Roll and Tax List of Real Property in the Town of Thunder Lake

\* Indicate Type of Property: R-Residential, C-Commercial, I-Industrial, U-Utility, F-Farm, L-Lakeshore, T-Timber, M-Mineral

Form 50 MILLER-DAVIS CO., MINNEAPOLIS

Cocley Trail, Duok-Pass, Oak Park, Birchwood Terrace, Del Ray Point

Table with columns: IN WHOSE NAME ASSESSED, SUBDIVISION, Description of Property, TRUE AND FULL VALUATIONS, ASSESSED VALUATIONS, FINAL EQUALIZED VALUE. Includes handwritten entries for Del Ray Point.

Cass County, Minnesota, for Taxes for the Year 1962.

Table with columns: VALUATIONS BY SCHOOL DISTRICTS AS EQUALIZED BY DEPARTMENT OF TAXATION, TAXES, PAID, WHEN PAID, Number of Receipt, March Settlement, June Settlement, November Settlement, Collections to First Monday in January 1964, Delinquent on First Monday in January 1964, Total Delinquent Tax and Penalty, REMARKS. Includes handwritten entries and calculations.

1st Add, to, Peter's Bay, Trellipe Sand, Bar X Ranch

Plat of P.F. 6







Assessment Roll and Tax List of Real Property in the Town of Thunder Lake

\* Indicate Type of Property: R-Residential, C-Commercial, I-Industrial, U-Utility, F-Farm, L-Lakeshore, T-Timber, M-Mineral

Cass County, Minnesota, for Taxes for the Year 1962.

Cooley Trail, 1st Addition to Birchwood Terrace, Oak Park Benches, Oak Lawn Beach, Birchwood Terrace, Del Ray Point, Flat of P. F. 6

Table with columns: IN WHOSE NAME ASSESSED, DESCRIPTION OF PROPERTY, TRUE AND FULL VALUATIONS, ASSESSED VALUATIONS, VALUATIONS BY SCHOOL DISTRICTS AS EQUALIZED BY DEPARTMENT OF TAXATION, TAX INCLUDING STATE HOMESTEAD, SPECIAL TAXES, TOTAL TAXES, PAID, WHEN PAID, Number of Receipt, March Settlement 1963, June Settlement 1963, November Settlement 1963, Collections to First Monday in January 1964, Delinquent on First Monday in January 1964, Total Delinquent Tax and Penalty, REMARKS.

Water's Bay, Treilpe Sand Beach, Bar X Ranch, PERSONAL







Assessment Roll and Tax List of Real Property in the Town of Thunder Lake

Form 5C - MILLER-DAVIS CO., MINNEAPOLIS

\* Indicate Type of Property: R-Residential, C-Commercial, I-Industrial, U-Utility, F-Farm, L-Lakeshore, T-Timber, M-Mineral

Cass County, Minnesota, for Taxes for the Year 1962.

IN WHOSE NAME ASSESSED	DESCRIPTION OF PROPERTY				No. School District	Indicate Home-Stead Yes or No	Agri. or Seas. Recr. Yes or No	Indicate Type of Property	TRUE AND FULL VALUATIONS				ASSESSED VALUATIONS							FINAL EQUALIZED VALUE	
	Trelipe Sand Beach SUBDIVISION	Sec. or Lot	Town or Block	Rng.					Number of Acres of Land	LAND Exclusive of Structures and Improvements	BUILDINGS and Other Structures	MACHINERY Permanently Attached to Real Estate	TOTAL True and Full Value	RURAL			ALL OTHER				
														Homestead Up to \$4,000 20%	Over \$4,000 and Non-Homestead 33 1/3%	Timber Land Class 3e 20%	Homestead Up to \$4,000 25%	Over \$4,000 and Non-Homestead 40%	MACHINERY Permanently Attached to Real Estate 33 1/3%		Seasonal and Recreational Cabins 33 1/3%
Edwin P. & Larna H. Waterhouse	Part of Subd. Lots 6 & 7 Sec 6-140-26	1			1	67	180		247			83				83					
"	"	2			2	67			67			22				22					
"	"	3		3	3	67			67			22				22					
Lester J. & Helen V. Johnson	Part of Subd. 3 & all 4	4			4	67	540		607			202				202					
Dennis R. & Nancy J. Johnson	Part of 5	5			5	67	360		403			22				22					
Edwin P. & Larna H. Waterhouse	Part of Subd. 5 & all 6	6			6	67			67			22				22					
Alvah E. & Ellen S. Elliott	"	7			7	67			67			22				22					
Alvah E. & Ellen S. Elliott	"	8			8	67	608		675	135		135				135					
"	"	9			9	67	405		472	14		14				14					
Harvey C. & Dorothy M. Randolph	"	10			10	67			67			22				22					
Richard S. & Marion S. Stilkey	"	11			11	67			67			22				22					
Louis E. & Helen E. Elliott	"	12			12	67			67			22				22					
Dennis R. & Nancy J. Johnson	Outlet A	13			13	67			67			22				22					
		14			14																
		15			15																
		16			16																
		17			17																
		18			18																
		19			19																
		20			20																
						585	945		1530			510				510					
						871	1328		2199	149		483				632					

SOLD FOR TAXES	VALUATIONS BY SCHOOL DISTRICTS AS EQUALIZED BY DEPARTMENT OF TAXATION						Tax Including State Homestead	State Tax on Non-Homestead	SPECIAL TAXES	SPECIAL TAXES	TOTAL TAXES	PAID	WHEN PAID	Number of Receipt	March Settlement 1963	June Settlement 1963	November Settlement 1963	Penalty	Collections to First Monday in January 1964	Penalty	Delinquent on First Monday in January 1964	Total Delinquent Tax and Penalty	REMARKS
	District No.	District No.	District No.	District No.	District No.	District No.																	
	Rate	Rate	Rate	Rate	Rate	Rate																	
1						83					1976	70											
2						22					524	18											
3						22					524	18											
4						202					4808	172											
5						22					524	18											
6						22					524	18											
7						22					524	18											
8						H 135					3214												
9						H 14					334												
10						22					524	18											
11						22					524	18											
12						22					524	18											
13						22					524	18											
14																							
15																							
16																							
17																							
18																							
19																							
20																							



















