

Assessment & Tax List - 1958

Thunder Lake



SUMMARY OF TAX COLLECTION

Original Levy	- - - - -	\$ 120,282.28	
Additions	- - - - -	\$ .....	
			\$ 120,282.28
Abatements	- - - - -	\$ 124.32	
			\$ 12,903.96

COLLECTIONS

March Settlement	- - - - -	\$ 1,772.36	
June Settlement	- - - - -	\$ 6829.50	
November Settlement	- - - - -	\$ 3,188.71	
January Settlement	- - - - -	\$ 82.18	\$ 11,872.75
			\$ .....
Over Collected	- - - - -	\$ 23.40	
Under Collected	- - - - -	\$ .....	
Delinquent	- - - - -	\$ 10,546.61	\$ 10,311.21
Total	- - - - -		\$ 12,903.96

Real Estate

County of ...

Our Part ...

Our Part ...

Marchwood Terrace

...

TABULAR SCHEDULE OF VALUATIONS,

LEVIED IN THE Town OF Thunder Lake

School District No.	VALUATION BY SCHOOL DISTRICTS				RATE OF STATE TAXES	RATE OF COUNTY TAXES										RATE OF TOWN TAXES										RATE OF										
	Agri-cultural Lands	Non-Agri-cultural Lands	Personal Property	Total Value of all Property except Money and Credits		Total Rate of State Tax	Rev.	R. & B.	Wel-fare	Bonds and Int.	R & B Fed Proj.	PERA	Total Rate of County Tax	Rev.	R. & B.	Drag Tax	State Loan	Total Rate of Town Tax	Local	Spe-cial	State Loan	Defi-ciency	Tui-tion	Trans-portion	PERA	Local	Spe-cial	State Loan	Defi-ciency	Tui-tion	Trans-portion	PERA				
118	24,011	23,725	632	56,223	11.590	29.54	15.57	68			5.345	109.17	6.2	17.8	1.	5.3	30.3	1.	25.	26.44	1.45	9.77	3.37		1.	25.	26.44	1.45	9.77	3.37						
						Co. Nurse 2. R & B Bldg. 2. Agric. Assn. 1.5 N.H. 6.52 12.42																														
Assessed Value	Rural	All Other	Personal Property	Total																																
Homestead	10,671			10,671																																
Non-Homestead	37,065		8,487	45,552																																
Total	47,736		8,487	56,223																																

RATES AND TAXES

COUNTY OF CASS, STATE OF MINNESOTA

SCHOOL TAXES		LOCAL 1 MILL AND SPECIAL SCHOOL TAXES BY DISTRICTS										ALL OTHER TAXES		
Total Rate of Sch'l Tax	Total Rate of all Taxes	Local 1 Mill	Special	State Loan	Def. Drump.	C.O.	PERA	Total School Taxes	FUNDS	Rate	Amounts			
67.03	212.4	2464	61607		65156	3573	24076	8305	State - Non-Homestead,		29676			
92.03	237.4	3158	157900		83497	4579	30854	10642	State - Homestead,		33171			
		5622	219507		148653	8152	54930	18947	County Revenue,		16693			
									County Road and Bridge,		84334			
									County Welfare,		290579			
									Bonds and Interest - PERA		19399			
									Co. Nurse		11245			
									R & B Bldg. Proj.		28111			
									Town Revenue,		34858			
									Town Road and Bridge,		100077			
									Town Drag,		5622			
									Town State Loan,		29798			
									Three		170355			
									School Local 1 Mill,		5622			
									School Special,		219507			
									School State Loan,					
									Deficiency		148653			
									Tuition					
									Transportation		8152			
									C.O.		54930			
									PERA		18947			
											455811			

County: R & B Bldg 11245  
 Agric. Assn. 2811  
 613815

Total Taxes Real Estate 10,974.06  
 Pers. Prop. 2054.22  
 Total 13,028.28

Total Levy, \$ 13,028.28  
 I, D. C. Peterson  
 Auditor of said County and State of said, do hereby certify that the foregoing is a true and correct Schedule, showing the valuation of all the taxable property, in the Town of Thunder Lake, in said County, the several rates of Taxation and Totals of the several Tax Funds levied thereon for the year A. D. 1958.

Witness my hand and official seal, this January day of January, A. D. 1959.

SEAL

D. C. Peterson  
 County Auditor  
 By Helena Billen, Deputy

Real Estate

COLLECTIONS OF TAXES OF 1959, Town OF Thunder Lake, CASS COUNTY, MINNESOTA

FUNDS	MARCH SETTLEMENT 1959	JUNE SETTLEMENT 1959	NOV. SETTLEMENT 1959	Amount Collected from Nov. 1957 to First Monday in Jan. 1959	REDUCTIONS	Total Reductions and Collected	BALANCE UNCOLLECTED	ADDITIONS	Total Uncollected to First Monday in January, 1959
State-Non-Homestead,	46 03	149 05	64 70	122					
State-Homestead,	43 71	174 63	81 12	201					
Ag. Assoc.	3 71	14 80	6 87	18					
County Revenue,	218 84	874 32	406 13	1007					
County Road and Bridge,	111 12	443 97	206 22	512					
County Welfare,	382 85	1527 62	710 52	1762					
County Bond and Interest, P.E.P.A.	25 56	102 10	47 42	119					
R.+B. Fed. Prof.	37 64	147 99	68 74	170					
C. Nurse	14 82	59 20	27 50	68					
R.+B. Bldg.	14 82	59 20	27 50	68					
Town Revenue,	45 93	183 57	85 24	212					
Town Road and Bridge,	131 87	526 84	244 72	607					
Town Drag,	7 41	29 60	13 75	34					
Town State Loan,									
Fire	39 26	156 87	72 87	180					
School Local 1 Mill,	7 41	29 59	13 74	34					
School Special,	338 02	1133 82	547 57	1705					
School State Loan,									
Deficiency	195 87	782 57	363 52	902					
Tuition									
Transportation	10 94	42 91	19 93	49					
C. O.	72 38	289 17	134 32	333					
P. E. P. A.	24 97	99 74	46 33	115					
	1772 36	6829 50	3188 71	8218					

MARCH SETTLEMENT	School District No.	LOCAL 1 MILL	SPECIAL	STATE LOAN	Deficiency	Transp.	C. O.	P. E. P. A.	TOTALS
		118-a	130	3239		3425	188	1266	
	118-na	611	30563		16162	886	5972	2061	56255
	Totals	741	33802		19587	1074	7238	2497	64939
JUNE SETTLEMENT	118-a	1384	34609		36602	2007	13525	4665	92792
	118-na	1575	78773		41655	2284	15392	5309	144488
	Totals	2959	113382		78257	4291	28917	9974	237780
NOVEMBER SETTLEMENT	118a	559	13985		14792	811	5465	1885	37497
	118na	815	40772		21560	1182	7967	2748	75044
	Totals	1374	54757		36352	1993	13432	4633	112541
NOVEMBER to JANUARY	118na	34	1705		902	49	333	115	3138
	Totals	34	1705		902	49	333	115	3138
ADDITIONS									
REDUCTIONS									

Real Estate



Assessment Roll and Tax List of Real Property in the Town of Thunder Lake

Cass County, Minnesota, for Taxes for the Year 1958.

\* Indicate Type of Property: R-Residential, C-Commercial, I-Industrial, U-Utility, F-Farm, L-Lakeshore, T-Timber, M-Mineral

Table with 40 columns: IN WHOSE NAME ASSESSED, TO WHOM TRANSFERRED, DESCRIPTION OF PROPERTY, TRUE AND FULL VALUATIONS, ASSESSED VALUATIONS, VALUATIONS BY SCHOOL DISTRICTS AS EQUALIZED BY DEPARTMENT OF TAXATION, SOLD FOR TAXES, PAID, WHEN PAID, Number of Receipt, March Settlement 1959, June Settlement 1959, Penalty, November Settlement 1959, Penalty, Collections to First Monday in January 1960, Penalty, Delinquent on First Monday in January 1960, Total Delinquent Tax and Penalty, REMARKS.





Assessment Roll and Tax List of Real Property in the Town of Thunder Lake

Cass County, Minnesota, for Taxes for the Year 1958.

Form 507 UNIFORM PROPERTY TAX MAPS... \*Indicate Type of Property: R-Residential, C-Commercial, I-Industrial, U-Utility, F-Farm, L-Lakeshore, T-Timber, M-Mineral

Table with columns: IN WHOSE NAME ASSESSED, TO WHOM TRANSFERRED, DESCRIPTION OF PROPERTY, TRUE AND FULL VALUATIONS, ASSESSED VALUATIONS, VALUATIONS BY SCHOOL DISTRICTS AS EQUALIZED BY DEPARTMENT OF TAXATION, SOLD FOR TAXES, PAID, WHEN PAID, and REMARKS.





Assessment Roll and Tax List of Real Property in the Town of Thunder Lake

Indicate Type of Property: R-Residential, C-Commercial, I-Industrial, U-Utility, F-Farm, L-Lakeshore, T-Timber, M-Mineral

Cass County, Minnesota, for Taxes for the Year 1958.

Table with columns: IN WHOSE NAME ASSESSED, TO WHOM TRANSFERRED, DESCRIPTION OF PROPERTY, TRUE AND FULL VALUATIONS, ASSESSED VALUATIONS, VALUATIONS BY SCHOOL DISTRICTS AS EQUALIZED BY DEPARTMENT OF TAXATION, TAXES, PAID, WHEN PAID, SPECIAL TAXES, TOTAL TAXES, PAID, WHEN PAID, Number of Receipt, March Settlement 1959, June Settlement 1959, November Settlement 1959, Penalty, Collections to First Monday in January 1960, Delinquent on First Monday in January 1960, Total Delinquent Tax and Penalty, REMARKS.

(See 6, continued) on next page

Real Est

Out Part Bonds Out Loan Mch. Birchwood Rev. 2nd May Post

Assessment Roll and Tax List of Real Property in the Town of *Thunder Lake*

\* Indicate Type of Property: R-Residential, C-Commercial, I-Industrial, U-Utility, F-Farm, L-Lakeshore, T-Timber, M-Mineral

IN WHOSE NAME ASSESSED	TO WHOM TRANSFERRED	DESCRIPTION OF PROPERTY		TRUE AND FULL VALUATIONS												FINAL EQUALIZED VALUE						
		SUBDIVISION	Sec. of Lot	Town or Block	Rng.	Number of Acres of Land		No. School District	Indicate Homestead Yes or No	Indicate Agricultural Yes or No	Indicate Type of Property	RURAL					TOTAL ASSESSED VALUE	Total Assessed Value as Equalized by the Board of Review	Dollars			
						LAND Exclusive of Structures and Improvements						BUILDINGS and Other Structures	MACHINERY Permanently Attached to Real Estate	TOTAL True and Full Value	ALL OTHER					MACHINERY Permanently Attached to Real Estate	TOTAL ASSESSED VALUE	
						Acres	100ths								Homestead Up to \$4,000 20%							Over \$4,000 and Non-Homestead 33 1/3%
<i>Eleanor L. Bluhm</i>		<i>NE 1/4 of NE 1/4 of Lot 243</i>	<i>6</i>	<i>140</i>	<i>26</i>	<i>14</i>	<i>718</i>	<i>no</i>	<i>no</i>	<i>R</i>	<i>30</i>	<i>100</i>	<i>30</i>	<i>10</i>	<i>10</i>	<i>10</i>	<i>10</i>	<i>10</i>				
<i>Emma A. &amp; James V. Marse</i>		<i>NW 1/4 of NE 1/4 of Lot 243</i>				<i>14</i>	<i>no</i>	<i>no</i>	<i>L</i>	<i>30</i>			<i>30</i>	<i>10</i>	<i>10</i>							
<i>Emma A. Marse</i>		<i>SW 1/4 of NE 1/4 of Lot 243</i>				<i>14</i>	<i>no</i>	<i>no</i>	<i>L</i>	<i>30</i>	<i>100</i>		<i>130</i>	<i>45</i>	<i>45</i>							
<i>Arthur R. Bluhm</i>		<i>SE 1/4 of NE 1/4 of Lot 243</i>				<i>14</i>	<i>no</i>	<i>no</i>	<i>L</i>	<i>30</i>			<i>30</i>	<i>10</i>	<i>10</i>							
<i>Howard C. Bluhm</i>		<i>Tracts of Lot 243</i>				<i>14</i>	<i>no</i>	<i>no</i>	<i>L</i>	<i>30</i>			<i>30</i>	<i>10</i>	<i>10</i>							
		<i>NE 1/4 of NW 1/4</i>													<i>10</i>							
		<i>NW 1/4 of NW 1/4</i>													<i>10</i>							
		<i>SW 1/4 of NW 1/4</i>													<i>10</i>							
		<i>SE 1/4 of NW 1/4</i>													<i>10</i>							
		<i>NE 1/4 of SW 1/4</i>													<i>10</i>							
		<i>NW 1/4 of SW 1/4</i>													<i>10</i>							
		<i>SW 1/4 of SW 1/4</i>													<i>10</i>							
		<i>SE 1/4 of SW 1/4</i>													<i>10</i>							
		<i>NE 1/4 of SE 1/4</i>													<i>10</i>							
		<i>NW 1/4 of SE 1/4</i>													<i>10</i>							
		<i>SW 1/4 of SE 1/4</i>													<i>10</i>							
		<i>SE 1/4 of SE 1/4</i>													<i>10</i>							
													<i>155</i>	<i>100</i>	<i>255</i>	<i>85</i>	<i>85</i>					

Cass County, Minnesota, for Taxes for the Year 1958.

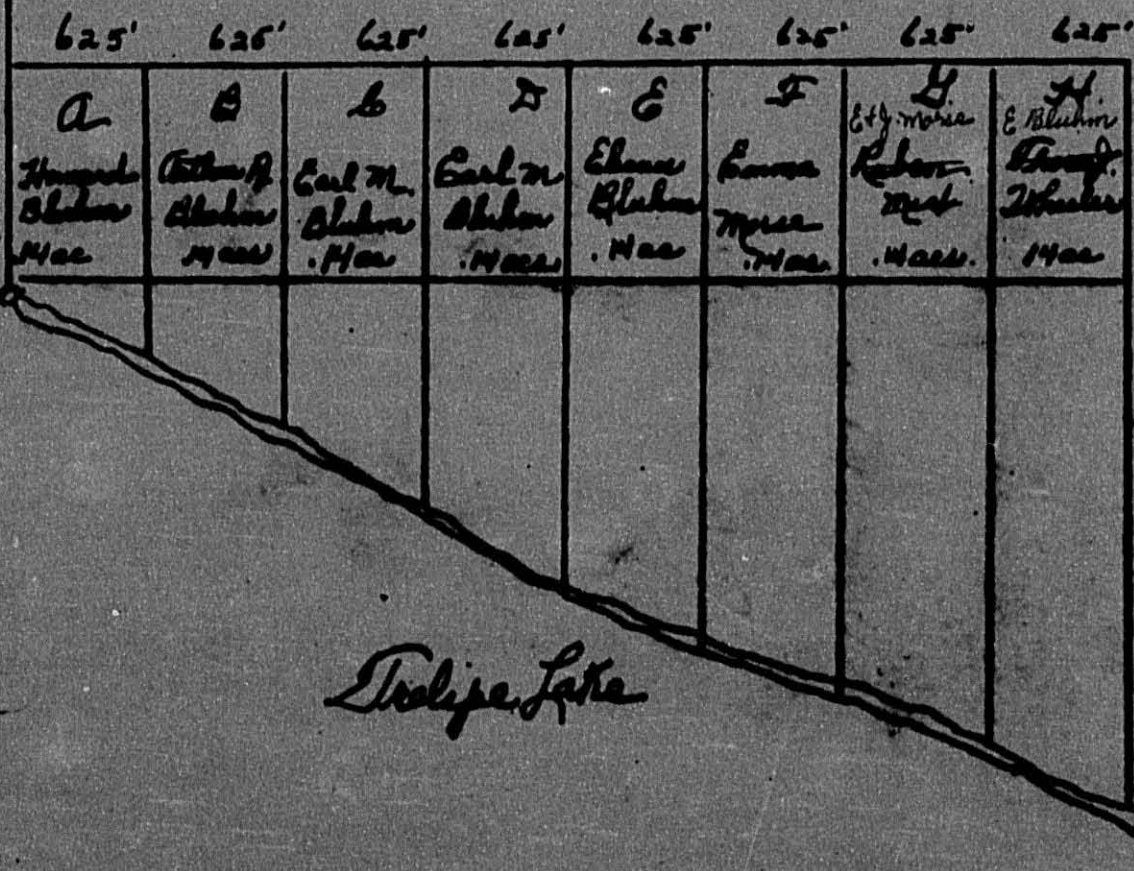
SOLD FOR TAXES	VALUATIONS BY SCHOOL DISTRICTS AS EQUALIZED BY DEPARTMENT OF TAXATION						Tax including State Homestead	State Tax on Non-Homestead	SPECIAL TAXES	TOTAL TAXES	PAID	WHEN PAID	Number of Receipt	March Settlement 1959	June Settlement 1959	Penalty	November Settlement 1959	Penalty	Collections to First Monday in January 1960	Penalty	Delinquent on First Monday in January 1960	Total Delinquent Tax and Penalty	REMARKS	
	District No.	District No.	District No.	District No.	District No.	District No.																		
	Rate	Rate	Rate	Rate	Rate	Rate																		
	<i>118</i>																							
<i>1</i>							<i>212</i>	<i>06</i>		<i>218</i>	<i>1</i>	<i>PAID IN FULL</i>	<i>MAY 11 1959</i>	<i>7520</i>		<i>218</i>								
<i>2</i>							<i>212</i>	<i>06</i>		<i>218</i>	<i>2</i>											<i>11422</i>		
<i>3</i>							<i>956</i>	<i>30</i>		<i>986</i>	<i>3</i>										<i>218</i>	<i>240</i>		
<i>4</i>							<i>212</i>	<i>06</i>		<i>218</i>	<i>4</i>										<i>986</i>	<i>1080</i>		
<i>5</i>							<i>212</i>	<i>06</i>		<i>218</i>	<i>5</i>	<i>PAID IN FULL</i>	<i>MAY 29 1959</i>	<i>13509</i>		<i>218</i>					<i>218</i>			
											<i>6</i>											<i>11424</i>		
											<i>7</i>													
											<i>8</i>													
											<i>9</i>													
											<i>10</i>													
											<i>11</i>													
											<i>12</i>													
											<i>13</i>													
											<i>14</i>													
											<i>15</i>													
											<i>16</i>													
											<i>17</i>													
											<i>18</i>													
											<i>19</i>													
											<i>20</i>													
											<i>20</i>											<i>1804</i>	<i>54</i>	<i>1858</i>

Real Est.

Out Port Backed Out Lane Back

Ridgwood Avenue Dalby Point

100' x 500' of Lot 2 & 1/4 ac. of Lot 3  
 Dec. 6-14-26



Str. line of  
 Lot 2

Lot 2  
 Lot 3

Dodge Lake



Indicate Type of Property: R-Residential, C-Commercial, I-Industrial, U-Utility, F-Farm, L-Lakeshore, T-Timber, M-Mineral

IN WHOSE NAME ASSESSED	TO WHOM TRANSFERRED	DESCRIPTION OF PROPERTY				No. School District	Indicate Homestead Yes or No	Indicate Agricultural Yes or No	Indicate Type of Property	TRUE AND FULL VALUATIONS						TOTAL ASSESSED VALUE	Total Assessed Value as Equalized by the Board of Review	FINAL EQUALIZED VALUE			
		SUBDIVISION	Sec. or Lot	Town or Block	Rm.					Number of Acres of Land	LAND Exclusive of Structures and Improvements	BUILDINGS and Other Structures	MACHINERY Permanently Attached to Real Estate	TOTAL True and Full Value	RURAL				MACHINERY Permanently Attached to Real Estate		
															RURAL					ALL OTHER	
																				Homestead Up to \$4,000 20%	Over \$4,000 and Non-Homestead 33 1/3%
		1	8	140	26																
		2																			
		3																			
		4																			
		5																			
John C. Lange		6				5335			no	402	T	696									
Edwin P. Waterhouse		7				3935			no	402	T	300									
Edwin P. Waterhouse		8				1702			no	70	R	201	201								
State of Minnesota		9																			
		10																			
		11																			
		12																			
Frank L. Henke		13				40			no	402	T	360									
Louis C. & Anna C. Henke		14				3575			no	402	C	900	4176	4302	785	1392					
Iver & Mildred Carlson		15							no	402	L	45									
Ruth M. & John A. Sigverson		16																			
Edwin P. Waterhouse		17																			
Charles Waterhouse		18																			
Anna C. & Louise C. Henke		19				15			no	70	L	45									
Alfred P. & Fern L. Matteson		20																			

SOLD FOR TAXES	VALUATIONS BY SCHOOL DISTRICTS AS EQUALIZED BY DEPARTMENT OF TAXATION						Tax including State Homestead	State Tax on Non-Homestead	SPECIAL TAXES	TOTAL TAXES	PAID	WHEN PAID	Number of Receipt	March Settlement 1959	June Settlement 1959	Penalty	November Settlement 1959	Penalty	Collections to First Monday in January 1960	Penalty	Delinquent on First Monday in January 1960	Total Delinquent Tax and Penalty	REMARKS
	District No.	District No.	District No.	District No.	District No.	District No.																	
	Rate	Rate	Rate	Rate	Rate	Rate																	
	Dollars	Dollars	Dollars	Dollars	Dollars	Dollars																	
6	232					4978	152		5080	PAID IN FULL	MAY 29 1959			5080								11426	
7	100					2124	66		2190	PAID IN FULL	MAY 29 1959			2190									"
8			134			3182	88		3270	1st Half Paid	MAY 29 1959			1635			1635						11443
13	120					2548	78		2626	PAID IN FULL	APR 20 1959			2626									11415
14				785	1392	51682	908		52590	Part Paid	MAY 11 1959			26280			26370						11391
19	15					318	10		328	2nd HALF PAID	SEP 5 1959			164			164						11467
20						4918	1202		66084					37925			28109						





Read 11920

Govt Lot 4  
Dec 8-14-26

280'

26

25

24

23

22

21

20

19

18

17

16

15

14

13

12

11

10

9

8

7

6

5

4

3

2

Nygard

267.3'

Wahman

267.3'

L & A. Hanka

267.3'

L & A. Hanka

267.3

Frank X Hanka

3

2

Thunder Ave.

Block 1

Graded Deep Road

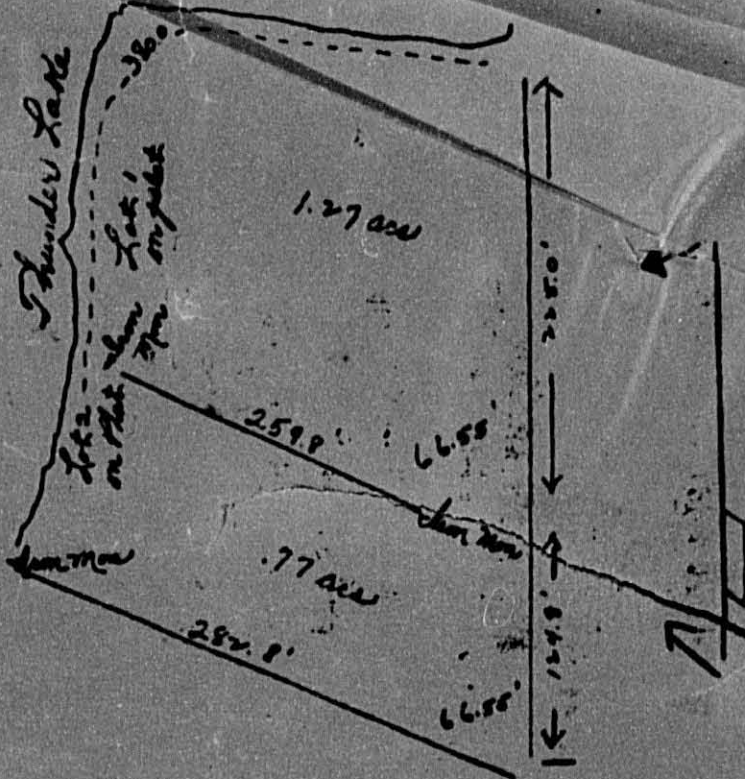
Block 2

Assessment Roll and Tax List of Real Property in the Town of Thunder Lake

Cass County, Minnesota, for Taxes for the Year 1958.

Table with columns: IN WHOSE NAME ASSESSED, TO WHOM TRANSFERRED, DESCRIPTION OF PROPERTY, TRUE AND FULL VALUATIONS, ASSESSED VALUATIONS, VALUATIONS BY SCHOOL DISTRICTS AS EQUALIZED BY DEPARTMENT OF TAXATION, TAXES, PAID, WHEN PAID, etc.

1458 ac. Now Plat of  
P. 56.



Cass County  
Sec 9-140-26  
South Lot 3

South Lot 3

See North

4 car port founded in place

Assessment Roll and Tax List of Real Property in the Town of Thunder Lake

\* Indicate Type of Property: R-Residential, C-Commercial, I-Industrial, U-Utility, F-Farm, L-Lakeshore, T-Timber, M-Mineral

Cass County, Minnesota, for Taxes for the Year 1958.

Table with columns: IN WHOSE NAME ASSESSED, TO WHOM TRANSFERRED, DESCRIPTION OF PROPERTY, TRUE AND FULL VALUATIONS, ASSESSED VALUATIONS, and FINAL EQUALIZED VALUE.

Table with columns: SOLD FOR TAXES, VALUATIONS BY SCHOOL DISTRICTS AS EQUALIZED BY DEPARTMENT OF TALLATION, Tax including State Homestead, State Tax on Non-Homestead, SPECIAL TAXES, TOTAL TAXES, PAID, WHEN PAID, Number of Receipt, March Settlement 1959, June Settlement 1959, Penalty, November Settlement 1959, Penalty, Collections to First Monday in January 1960, Delinquent on First Monday in January 1960, Total Delinquent Tax and Penalty, and REMARKS.



Assessment Roll and Tax List of Real Property in the Town of Thunder Lake of Thunder Lake

Cass County, Minnesota, for Taxes for the Year 1958.

Table with columns: IN WHOSE NAME ASSESSED, TO WHOM TRANSFERRED, DESCRIPTION OF PROPERTY, TRUE AND FULL VALUATIONS, ASSESSED VALUATIONS, VALUATIONS BY SCHOOL DISTRICTS AS EQUALIZED BY DEPARTMENT OF TAXATION, SOLD FOR TAXES, PAID, WHEN PAID, Number of Receipt, March Settlement 1959, June Settlement 1959, November Settlement 1959, Collections to First Monday in January 1960, Delinquent on First Monday in January 1960, Total Delinquent Tax and Penalty, REMARKS.

Assessment Roll and Tax List of Real Property in the Down of Thunder Lake

Cass County, Minnesota, for Taxes for the Year 1958.

\* Indicate Type of Property: R-Residential, C-Commercial, I-Industrial, U-Utility, F-Farm, L-Lakeshore, T-Timber, M-Mineral

IN WHOSE NAME ASSESSED	TO WHOM TRANSFERRED	DESCRIPTION OF PROPERTY						TRUE AND FULL VALUATIONS							SOLD FOR TAXES	VALUATIONS BY SCHOOL DISTRICTS AS EQUALIZED BY DEPARTMENT OF TAXATION						SPECIAL TAXES	TOTAL TAXES	PAID	WHEN PAID			Number of Receipt	March Settlement 1959	June Settlement 1959	November Settlement 1959	Penalty	Collections to First Monday in January 1960	Penalty	Delinquent on First Monday in January 1960	Total Delinquent Tax and Penalty	REMARKS																	
		SUBDIVISION	Sec. or Lot	Town or Block	Rng.	Number of Acres of Land		LAND Exclusive of Structures and Improvements	BUILDINGS and Other Structures	MACHINERY Permanently Attached to Real Estate	TOTAL True and Full Value	RURAL				ALL OTHER				TOTAL ASSESSED VALUE	Total Assessed Value as Equalized by the Board of Review				FINAL EQUALIZED VALUE	District No.	District Rate											District No.	District Rate	District No.	District Rate	District No.	District Rate	Tax Including State Homestead	State Tax on Non-Homestead	Month	Day	Year	Tax	Penalty	Tax	Penalty	Tax	Penalty
						Acres	100ths					Homestead Up to \$4,000 20%	Over \$4,000 and Non-Homestead 33 1/3%	Timber Land Class 3e 20%		Homestead Up to \$4,000 25%	Over \$4,000 and Non-Homestead 40%	MACHINERY Permanently Attached to Real Estate 33 1/3%																																				
State of Minnesota		NE 1/4 of NE 1/4	12	140	26																																																	
State of Minnesota		NW 1/4 of NE 1/4																																																				
State of Minnesota		SW 1/4 of NE 1/4																																																				
State of Minnesota		SE 1/4 of NE 1/4																																																				
State of Minnesota		NE 1/4 of NW 1/4																																																				
State of Minnesota		NW 1/4 of NW 1/4																																																				
State of Minnesota		SW 1/4 of NW 1/4																																																				
State of Minnesota		SE 1/4 of NW 1/4																																																				
State of Minnesota		NE 1/4 of SW 1/4																																																				
Edward Toubant		NW 1/4 of SW 1/4				40			40	42	F	310	685	995	199				199																																			
" "		SW 1/4 of SW 1/4				40			"	"	"	255		255	51				51																																			
State of Minnesota		SE 1/4 of SW 1/4																																																				
Arthur & Dolores Conlan		NE 1/4 of SE 1/4				40			40	42	T	240		240	48				48																																			
State of Minnesota		NW 1/4 of SE 1/4																																																				
State of Minnesota		SW 1/4 of SE 1/4																																																				
Arthur & Dolores Conlan		SE 1/4 of SE 1/4				40			40	42	T	240		240	48				48																																			
						160						1045	685	1730	346				346																																			

2nd HALF PAID OCT 21 1959  
1st Half Paid MAY 29 1959

2nd HALF PAID OCT 21 1959  
1st Half Paid MAY 29 1959

2nd HALF PAID NOV 2 1959  
1st HALF PAID MAY 29 1959

11442

11396

11





Assessment Roll and Tax List of Real Property in the Town of Thunder Lake, Cass County, Minnesota, for Taxes for the Year 1958.

Form SC-10

Indicate Type of Property: R-Residential, G-Commercial, I-Industrial, U-Utility, F-Farm, L-Lakeshore, T-Timber, M-Mineral

Table with columns: IN WHOSE NAME ASSESSED, TO WHOM TRANSFERRED, DESCRIPTION OF PROPERTY, TRUE AND FULL VALUATIONS, ASSESSED VALUATIONS, VALUATIONS BY SCHOOL DISTRICTS AS EQUALIZED BY DEPARTMENT OF TAXATION, SOLD FOR TAXES, PAID, WHEN PAID, Number of Receipt, March Settlement 1959, June Settlement 1959, November Settlement 1959, Collections to First Monday in January 1960, Delinquent on First Monday in January 1960, Total Delinquent Tax and Penalty, REMARKS.

Real Es

Colony

Oak Park Beaches Oak Lawn Beach

Birchwood Terrace Oak Hill Point

Assessment Roll and Tax List of Real Property in the Town of Dunbar Lake

\* Indicate Type of Property: R-Residential, C-Commercial, I-Industrial, U-Utility, F-Farm, L-Lakeshore, T-Timber, M-Mineral

Cass County, Minnesota, for Taxes for the Year 1958.

Form 501 WILLIAMS COUNTY, MINNESOTA

IN WHOSE NAME ASSESSED	TO WHOM TRANSFERRED	DESCRIPTION OF PROPERTY				TRUE AND FULL VALUATIONS										FINAL EQUALIZED VALUE	
		Subdivision	Sec. of Lot	Town or Block	Rng.	Number of Acres of Land	Machinery Permanently Attached to Real Estate	Buildings and Other Structures	Land Exclusive of Structures and Improvements	ASSESSED VALUATIONS							Total Assessed Value as Equalized by the Board of Review
										RURAL		ALL OTHER					
									Homestead 20%	Over \$4,000 and Non-Homestead 33 1/3%	Timber Land Class 3e 20%	Over \$4,000 Homestead 25%	Over \$4,000 Non-Homestead 40%	Machinery Permanently Attached to Real Estate 33 1/3%	Total Assessed Value		
					Acres	Dollars	Dollars	Dollars	Dollars	Dollars	Dollars	Dollars	Dollars	Dollars	Dollars		
<i>James J. Mc Bride</i>			<i>15 140 26</i>		<i>40</i>	<i>245</i>			<i>48</i>					<i>48</i>			
<i>" "</i>		<i>Lot 1</i>			<i>44</i>	<i>490</i>	<i>123</i>		<i>181</i>	<i>41</i>				<i>162</i>			
<i>Gordon Liske</i>		<i>Lot 2</i>			<i>18 50</i>	<i>340</i>	<i>70</i>		<i>92</i>					<i>92</i>			
<i>" "</i>					<i>40</i>	<i>228</i>			<i>76</i>					<i>76</i>			
					<i>3</i>	<i>90</i>	<i>300</i>		<i>130</i>					<i>130</i>			
<i>Charles M. Niles 1/3, Miriam Niles 2/3 int</i>					<i>2 50</i>	<i>60</i>	<i>420</i>		<i>160</i>					<i>160</i>			
<i>Charles M. Niles 1/3, Miriam Niles 2/3 int</i>					<i>2 68</i>	<i>75</i>			<i>25</i>					<i>25</i>			
<i>Clayde O. Mohr</i>					<i>10</i>	<i>300</i>	<i>360</i>		<i>132</i>					<i>132</i>			
<i>Henny St Julia Hanson</i>					<i>15 23</i>	<i>375</i>	<i>1000</i>		<i>275</i>					<i>275</i>			
<i>Murray B + Neva B. Waters</i>					<i>6 30</i>	<i>180</i>	<i>600</i>		<i>260</i>					<i>260</i>			
<i>John St. + Joanna Lucille Poor</i>					<i>7 50</i>	<i>230</i>	<i>870</i>		<i>300</i>					<i>300</i>			
<i>Louisa Helian Thompson Erickson</i>		<i>Lot 6</i>			<i>57</i>	<i>600</i>	<i>183</i>		<i>261</i>					<i>261</i>			
<i>Charles M. Niles 1/3, Miriam Niles 2/3 int</i>					<i>2 03</i>	<i>60</i>			<i>20</i>					<i>20</i>			
<i>Ethel + Milan R. Biggerstaff</i>					<i>10 72</i>	<i>240</i>	<i>210</i>		<i>150</i>					<i>150</i>			
<i>John A. Mc Kay</i>					<i>2 68</i>	<i>60</i>	<i>201</i>		<i>87</i>					<i>87</i>			
<i>Dr. C. M. Niles 1/3, Miriam Niles 2/3 int</i>					<i>4 06</i>	<i>120</i>	<i>300</i>		<i>140</i>					<i>140</i>			
<i>Frederick M + Florence M. Erickson</i>					<i>9 30</i>	<i>120</i>	<i>595</i>		<i>173</i>					<i>173</i>			

(Sec. 15 Continued, Page 20)

SOLD FOR TAXES	VALUATIONS BY SCHOOL DISTRICTS AS EQUALIZED BY DEPARTMENT OF TAXATION						Tax including State Homestead	State Tax on Non-Homestead	SPECIAL TAXES	TOTAL TAXES	PAID	WHEN PAID	Number of Receipt	March Settlement 1959	June Settlement 1959	Penalty	November Settlement 1959	Penalty	Collections to First Monday in January 1960	Penalty	Delinquent on First Monday in January 1960	Total Delinquent Tax and Penalty	REMARKS
	District No.	District No.	District No.	District No.	District No.	District No.																	
							\$	\$	\$	\$				\$	\$	\$	\$	\$	\$	\$	\$		
							cts.	cts.	cts.	cts.				cts.	cts.	cts.	cts.	cts.	cts.	cts.	cts.		
<i>1</i>							<i>48</i>	<i>10 20</i>	<i>10 20</i>	<i>1 1/2 HALF PAID NOV 2 1959</i>	<i>NOV 2 1959</i>												
							<i>48</i>																
							<i>92</i>																
							<i>76</i>																
<i>6</i>	SOLD FOR TAXES						<i>130</i>																

Oak Park Beaches  
Oak Lawn Beach  
Bridgwood Terrace  
Dea. Mrs. Point





Assessment Roll and Tax List of Real Property in the Down of Thunder Lake

Indicate Type of Property: R-Residential, C-Commercial, I-Industrial, U-Utility, F-Farm, L-Lakeshore, T-Timber, M-Mineral

Table with columns: IN WHOSE NAME ASSESSED, TO WHOM TRANSFERRED, DESCRIPTION OF PROPERTY, TRUE AND FULL VALUATIONS, ASSESSED VALUATIONS, FINAL EQUALIZED VALUE. Includes handwritten entries for Louis & Anna L. Kente and Wheeler Lumber Bridge & Supply Co.

Cass County, Minnesota, for Taxes for the Year 1958.

Table with columns: SOLD FOR TAXES, VALUATIONS BY SCHOOL DISTRICTS AS EQUALIZED BY DEPARTMENT OF TAXATION, SPECIAL TAXES, TOTAL TAXES, PAID, WHEN PAID, Number of Receipt, March Settlement 1959, June Settlement 1959, Penalty, November Settlement 1959, Penalty, Collections to First Monday in January 1960, Penalty, Delinquent on First Monday in January 1960, Total Delinquent Tax and Penalty, REMARKS.

Assessment Roll and Tax List of Real Property in the Town of Thunder Lake

\* Indicate Type of Property: R-Residential, C-Commercial, I-Industrial, U-Utility, F-Farm, L-Lakeshore, T-Timber, M-Mineral

Cass County, Minnesota, for Taxes for the Year 1958.

Table with columns: IN WHOSE NAME ASSESSED, TO WHOM TRANSFERRED, DESCRIPTION OF PROPERTY, TRUE AND FULL VALUATIONS, ASSESSED VALUATIONS, VALUATIONS BY SCHOOL DISTRICTS AS EQUALIZED BY DEPARTMENT OF TAXATION, TAXES, PAID, WHEN PAID, Number of Receipt, March Settlement 1959, June Settlement 1959, Penalty, November Settlement 1959, Penalty, Collections to First Monday in January 1960, Penalty, Delinquent on First Monday in January 1960, Total Delinquent Tax and Penalty, REMARKS.

Assessment Roll and Tax List of Real Property in the Town of Thunder Lake

Cass County, Minnesota, for Taxes for the Year 1958.

Table with columns: IN WHOSE NAME ASSESSED, TO WHOM TRANSFERRED, DESCRIPTION OF PROPERTY, TRUE AND FULL VALUATIONS, ABSESSED VALUATIONS, VALUATIONS BY SCHOOL DISTRICTS AS EQUALIZED BY DEPARTMENT OF TAXATION, SOLD FOR TAXES, SPECIAL TAXES, TOTAL TAXES, PAID, WHEN PAID, Number of Receipt, March Settlement, June Settlement, November Settlement, Penalty, Collections to First Monday in January, Delinquent on First Monday in January, Total Delinquent Tax and Penalty, REMARKS.



Assessment Roll and Tax List of Real Property in the County of Thunder, Cass County, Minnesota, for Taxes for the Year 1958.

Form 307 MINN-SAYS-SUPPLY, MINNAPOLIS

\* Indicate Type of Property: R-Residential, C-Commercial, I-Industrial, U-Utility, F-Farm, L-Lakeshore, T-Timber, M-Mineral

IN WHOSE NAME ASSESSED	TO WHOM TRANSFERRED	DESCRIPTION OF PROPERTY				No. School District	Indicate Homestead Yes or No	Indicate Agricultural Yes or No	Indicate Type of Property	TRUE AND FULL VALUATIONS						TOTAL ASSESSED VALUE	Total Assessed Value as Equalized by the Board of Review	FINAL EQUALIZED VALUE	VALUATIONS BY SCHOOL DISTRICTS AS EQUALIZED BY DEPARTMENT OF TAXATION						SPECIAL TAXES	TOTAL TAXES	PAID	WHEN PAID	Number of Receipt	March Settlement 1959	June Settlement 1959	Penalty	November Settlement 1959	Penalty	Collections to First Monday in January 1960	Penalty	Delinquent on First Monday in January 1960	Total Delinquent Tax and Penalty	REMARKS							
		SUBDIVISION	Sec. or Lot	Town or Block	Rng.					Number of Acres of Land	LAND Exclusive of Structures and Improvements	BUILDINGS and Other Structures	MACHINERY Permanently Attached to Real Estate	TOTAL True and Full Value	RURAL				ALL OTHER		MACHINERY Permanently Attached to Real Estate	TOTAL ASSESSED VALUE	District No.	District No.																District No.	District No.	District No.	District No.	Tax including State Homestead	State Tax on Non-Homestead	
															Homestead Up to \$4,000 20%				Over \$4,000 and Non-Homestead 33 1/8%	Timber Land Class 3e 20%																										Homestead Up to \$4,000 25%
State of Minnesota		1	N E 1/4 of N E 1/4	20	140	26																																								
State of Minnesota		2	N W 1/4 of N E 1/4																																											
State of Minnesota		3	S W 1/4 of N E 1/4																																											
State of Minnesota		4	S E 1/4 of N E 1/4																																											
State of Minnesota		5																																												
State of Minnesota		6	N E 1/4 of N W 1/4																																											
State of Minnesota		7	N W 1/4 of N W 1/4																																											
State of Minnesota		8	S W 1/4 of N W 1/4																																											
State of Minnesota		9	S E 1/4 of N W 1/4																																											
State of Minnesota		10																																												
State of Minnesota		11	N E 1/4 of S W 1/4																																											
State of Minnesota		12	N W 1/4 of S W 1/4																																											
State of Minnesota		13	S W 1/4 of S W 1/4																																											
State of Minnesota		14	S E 1/4 of S W 1/4																																											
State of Minnesota		15																																												
State of Minnesota		16	N E 1/4 of S E 1/4																																											
State of Minnesota		17	N W 1/4 of S E 1/4																																											
State of Minnesota		18	S W 1/4 of S E 1/4																																											
State of Minnesota		19	S E 1/4 of S E 1/4																																											
		20																																												

Real Es

Oak Park Beach Oak Lawn Beach

Greenwood Terrace Oak Day Point

Assessment Roll and Tax List of Real Property in the Town of Thunder Lake

Indicate Type of Property: R-Residential, C-Commercial, I-Industrial, U-Utility, F-Farm, L-Lakeshore, T-Timber, M-Mineral

Cass County, Minnesota, for Taxes for the Year 1958.

Table with columns: IN WHOSE NAME ASSESSED, TO WHOM TRANSFERRED, DESCRIPTION OF PROPERTY, TRUE AND FULL VALUATIONS, ASSESSED VALUATIONS, VALUATIONS BY SCHOOL DISTRICTS AS EQUALIZED BY DEPARTMENT OF TAXATION, SOLD FOR TAXES, SPECIAL TAXES, TOTAL TAXES, PAID, WHEN PAID, Number of Receipt, March Settlement 1959, June Settlement 1959, Penalty, November Settlement 1959, Penalty, Collections to First Monday in January 1960, Penalty, Delinquent on First Monday in January 1960, Total Delinquent Tax and Penalty, REMARKS.

Handwritten names: Joseph B. Deaman, Marie Regwast Hans, Lena H. Williams, Myron F. Leighton, Lena H. Williams

Handwritten numbers: 11253, 11475, 11473, 11474, 11473

Vertical text on the right edge: Oak Park Beaches, Oak Lawn Beach, Birchwood Terrace, Oak Bay Point

Assessment Roll and Tax List of Real Property in the Town of Thunder Lake

Cass County, Minnesota, for Taxes for the Year 1958.

Indicate Type of Property: R-Residential, C-Commercial, I-Industrial, U-Utility, F-Farm, L-Lakeshore, T-Timber, M-Mineral

Table with columns: IN WHOSE NAME ASSESSED, TO WHOM TRANSFERRED, DESCRIPTION OF PROPERTY, TRUE AND FULL VALUATIONS, ASSESSED VALUATIONS, VALUATIONS BY SCHOOL DISTRICTS AS EQUALIZED BY DEPARTMENT OF TAXATION, TAXES, PAID, WHEN PAID, Number of Receipt, March Settlement, June Settlement, November Settlement, Collections to First Monday in January 1960, Delinquent on First Monday in January 1960, Total Delinquent Tax and Penalty, REMARKS.

Assessment Roll and Tax List of Real Property in the Town of Thunder Lake, Cass County, Minnesota, for Taxes for the Year 1958.

Indicate Type of Property: R-Residential, C-Commercial, I-Industrial, U-Utility, F-Farm, L-Lakeshore, T-Timber, M-Mineral

Table with columns: IN WHOSE NAME ASSESSED, TO WHOM TRANSFERRED, DESCRIPTION OF PROPERTY, TRUE AND FULL VALUATIONS, ASSESSED VALUATIONS, VALUATIONS BY SCHOOL DISTRICTS AS EQUALIZED BY DEPARTMENT OF TALLIATION, SOLD FOR TAXES, PAID, WHEN PAID, Number of Receipt, March Settlement 1959, June Settlement 1959, November Settlement 1959, Collections to First Monday in January 1960, Delinquent on First Monday in January 1960, Total Delinquent Tax and Penalty, REMARKS.

Assessment Roll and Tax List of Real Property in the Town of Dundas Lake, County of Cass, Minnesota

Cass County, Minnesota, for Taxes for the Year 1958.

Table with columns: IN WHOSE NAME ASSESSED, TO WHOM TRANSFERRED, DESCRIPTION OF PROPERTY, TRUE AND FULL VALUATIONS, ASSESSED VALUATIONS, VALUATIONS BY SCHOOL DISTRICTS AS EQUALIZED BY DEPARTMENT OF TAXATION, SOLD FOR TAXES, PAID, WHEN PAID, March Settlement, June Settlement, November Settlement, Collections to First Monday in January 1960, Delinquent on First Monday in January 1960, Total Delinquent Tax and Penalty, REMARKS.





Assessment Roll and Tax List of Real Property in the Town of Thunder Lake

Indicate Type of Property: R-Residential, C-Commercial, I-Industrial, U-Utility, F-Farm, L-Lakeshore, T-Timber, M-Mineral

Table with columns: IN WHOSE NAME ASSESSED, TO WHOM TRANSFERRED, DESCRIPTION OF PROPERTY, TRUE AND FULL VALUATIONS, ASSESSED VALUATIONS, FINAL EQUALIZED VALUE. Includes handwritten entries for Melvin J. Velma E. Smith and Robert & Genevieve Stov. A.T. Larson.

Cass County, Minnesota, for Taxes for the Year 1958.

Table with columns: SOLD FOR TAXES, VALUATIONS BY SCHOOL DISTRICTS AS EQUALIZED BY DEPARTMENT OF TAXATION, Tax including State Homestead, State Tax on Non-Homestead, SPECIAL TAXES, TOTAL TAXES, PAID, WHEN PAID, Number of Receipt, March Settlement 1959, June Settlement 1959, November Settlement 1959, Collections to First Monday in January 1960, Delinquent on First Monday in January 1960, Total Delinquent Tax and Penalty, REMARKS. Includes handwritten entries for #115, #66, #34, #100, #122, #303, #134, #437.



Assessment Roll and Tax List of Real Property in the Town of Thunder Lake

\* Indicate Type of Property: R-Residential, C-Commercial, I-Industrial, U-Utility, F-Farm, L-Lakeshore, T-Timber, M-Mineral

Cass County, Minnesota, for Taxes for the Year 1958.

Table with columns: IN WHOSE NAME ASSESSED, TO WHOM TRANSFERRED, DESCRIPTION OF PROPERTY, TRUE AND FULL VALUATIONS, ASSESSED VALUATIONS, VALUATIONS BY SCHOOL DISTRICTS AS EQUALIZED BY DEPARTMENT OF TAXATION, TAXES, PAID, WHEN PAID, etc.

Assessment Roll and Tax List of Real Property in the Town of Thunder Lake

Indicate Type of Property: R-Residential, C-Commercial, I-Industrial, U-Utility, F-Farm, L-Lakeshore, T-Timber, M-Mineral

Cass County, Minnesota, for Taxes for the Year 1958.

Table with columns: IN WHOSE NAME ASSESSED, TO WHOM TRANSFERRED, DESCRIPTION OF PROPERTY, TRUE AND FULL VALUATIONS, ASSESSED VALUATIONS, VALUATIONS BY SCHOOL DISTRICTS AS EQUALIZED BY DEPARTMENT OF TAXATION, SOLD FOR TAXES, PAID, WHEN PAID, SPECIAL TAXES, TOTAL TAXES, REMARKS. Includes handwritten entries for names like Andrew P. & Marie Kirsch, Alta B. Vore, John Frederick Jensen, etc.

Assessment Roll and Tax List of Real Property in the Town of Down of Thunder Lake

Cass County, Minnesota, for Taxes for the Year 1958.

\* Indicate Type of Property: R-Residential, C-Commercial, I-Industrial, U-Utility, F-Farm, L-Lakeshore, T-Timber, M-Mineral

Table with columns: IN WHOSE NAME ASSESSED, TO WHOM TRANSFERRED, DESCRIPTION OF PROPERTY, TRUE AND FULL VALUATIONS, ASSESSED VALUATIONS, VALUATIONS BY SCHOOL DISTRICTS AS EQUALIZED BY DEPARTMENT OF TAXATION, TAXES, PAID, WHEN PAID, Number of Receipt, March Settlement 1959, June Settlement 1959, Penalty, November Settlement 1959, Penalty, Collections to First Monday in January 1960, Penalty, Delinquent on First Monday in January 1960, Total Delinquent Tax and Penalty, REMARKS.





Assessment Roll and Tax List of Real Property in the Town of Thunder Lake, Cass County, Minnesota, for Taxes for the Year 1958.

\* Indicate Type of Property: R-Residential, C-Commercial, I-Industrial, U-Utility, F-Farm, L-Lakeshore, T-Timber, M-Mineral

Cass County, Minnesota, for Taxes for the Year 1958.

IN WHOSE NAME ASSESSED	TO WHOM TRANSFERRED	DESCRIPTION OF PROPERTY		No. School District	Indicate Homestead Yes or No	Indicate Agricultural Yes or No	Indicate Type of Property	TRUE AND FULL VALUATIONS					ASSESSED VALUATIONS				FINAL EQUALIZED VALUE	SOLD FOR TAXES	VALUATIONS BY SCHOOL DISTRICTS AS EQUALIZED BY DEPARTMENT OF TAXATION						SPECIAL TAXES	TOTAL TAXES	PAID	WHEN PAID	Number of Receipt	March Settlement 1959	June Settlement 1959	Penalty	November Settlement 1959	Penalty	Collections to First Monday in January 1960	Penalty	Delinquent on First Monday in January 1960	Total Delinquent Tax and Penalty	REMARKS	
								LAND Exclusive of Structures and Improvements	BUILDINGS and Other Structures	MACHINERY Permanently Attached to Real Estate	TOTAL True and Full Value	RURAL	ALL OTHER	MACHINERY Permanently Attached to Real Estate	TOTAL ASSESSED VALUE	Total Assessed Value as Equalized by the Board of Review			District No.	District No.	District No.	District No.	District No.	Tax including State Homestead																State Tax on Non-Homestead
State of Minnesota		NE ¼ of NE ¼	31 140 26	# 118																																				
State of Minnesota		NW ¼ of NE ¼																																						
State of Minnesota		SW ¼ of NE ¼																																						
State of Minnesota		SE ¼ of NE ¼																																						
State of Minnesota		NE ¼ of NW ¼																																						
State of Minnesota		NW ¼ of NW ¼ Lot 1																																						
State of Minnesota		SW ¼ of NW ¼ Lot 2																																						
State of Minnesota		SE ¼ of NW ¼																																						
State of Minnesota		NE ¼ of SW ¼																																						
State of Minnesota		NW ¼ of SW ¼ Lot 3																																						
Lee Williams		SW ¼ of SW ¼ Lot 4	2333						300	90	390		130																											
State of Minnesota		SE ¼ of SW ¼ Lot 5																																						
State of Minnesota		NE ¼ of SE ¼																																						
State of Minnesota		NW ¼ of SE ¼																																						
State of Minnesota		SW ¼ of SE ¼																																						
State of Minnesota		SE ¼ of SE ¼																																						
State of Minnesota		NE ¼ of SE ¼																																						
State of Minnesota		NW ¼ of SE ¼																																						
State of Minnesota		SW ¼ of SE ¼																																						
State of Minnesota		SE ¼ of SE ¼																																						
State of Minnesota		NE ¼ of NE ¼	32 35						300	90	390		130																											

SOLD FOR TAXES

130

2762

84

2846

2846

11503

130

2762

84

2846

2846

Assessment Roll and Tax List of Real Property in the *Down* of *Thunder Lake*

\* Indicate Type of Property: R-Residential, C-Commercial, I-Industrial, U-Utility, F-Farm, L-Lakeshore, T-Timber, M-Mineral

Cass County, Minnesota, for Taxes for the Year 1958.

Form 502-BILLING-MAY 1958, MINNAPOLIS

Table with columns: IN WHOSE NAME ASSESSED, TO WHOM TRANSFERRED, DESCRIPTION OF PROPERTY, TRUE AND FULL VALUATIONS, ASSESSED VALUATIONS, VALUATIONS BY SCHOOL DISTRICTS AS EQUALIZED BY DEPARTMENT OF TAXATION, SOLD FOR TAXES, PAID, WHEN PAID, March Settlement 1959, June Settlement 1959, Penalty, November Settlement 1959, Penalty, Collections to First Monday in January 1960, Penalty, Delinquent on First Monday in January 1960, Total Delinquent Tax and Penalty, REMARKS.

*Navillus Land Co.*  
*Gilbert R. Sabin*  
*Navillus Land Co.*  
*Gilbert R. Sabin*  
*Navillus Land Co.*  
" " "  
" " "  
" " "  
*Aph & Vendela Nelson*

1 N E 1/4 of N E 1/4 32 140 26 40  
2 N W 1/4 of N E 1/4 40  
3 S W 1/4 of N E 1/4 40  
4 S E 1/4 of N E 1/4 40  
5  
6 N E 1/4 of N W 1/4 40  
7 N W 1/4 of N W 1/4 40  
8 S W 1/4 of N W 1/4 40  
9 S E 1/4 of N W 1/4 40  
10 1/2 of E 1/2 of that part of Lot 3  
11 N E 1/4 of S W 1/4  
12 N W 1/4 of S W 1/4  
13 S W 1/4 of S W 1/4  
14 S E 1/4 of S W 1/4 Lot 1  
15 1/2 of E 1/2 of Lot 3  
16 N E 1/4 of S E 1/4 40  
17 N W 1/4 of S E 1/4 40  
18 S W 1/4 of S E 1/4 Lot 2  
19 S E 1/4 of S E 1/4  
20 1/2 of E 1/2 of that part of Lot 3 lying N of meadow cov.

Table with columns: No. School District, Indicate Homestead or No, Indicate Agricultural Use or No, Indicate Type of Property, LAND Exclusive of Structures and Improvements, BUILDINGS and Other Structures, MACHINERY Permanently Attached to Real Estate, TOTAL True and Full Value, RURAL Homestead Up to \$4,000 20%, Over \$4,000 and Non-Homestead 33 1/3%, Timber Land Class 3e 20%, ALL OTHER Homestead Up to \$4,000 25%, Over \$4,000 and Non-Homestead 40%, MACHINERY Permanently Attached to Real Estate 33 1/3%, TOTAL ASSESSED VALUE, Total Assessed Value as Equalized by the Board of Review, FINAL EQUALIZED VALUE

Table with columns: SOLD FOR TAXES, VALUATIONS BY SCHOOL DISTRICTS AS EQUALIZED BY DEPARTMENT OF TAXATION (District No., District, District, District, District, District), Tax including State Homestead, State Tax on Non-Homestead, SPECIAL TAXES, TOTAL TAXES, PAID, WHEN PAID (Month Day Year), Number of Receipt, March Settlement 1959, June Settlement 1959, Penalty, November Settlement 1959, Penalty, Collections to First Monday in January 1960, Penalty, Delinquent on First Monday in January 1960, Total Delinquent Tax and Penalty, REMARKS





Assessment Roll and Tax List of Real Property in the Town of Thunder Lake

Indicate Type of Property: R-Residential, C-Commercial, I-Industrial, U-Utility, F-Farm, L-Lakeshore, T-Timber, M-Mineral

Cass County, Minnesota, for Taxes for the Year 1958.

IN WHOSE NAME ASSESSED	TO WHOM TRANSFERRED	DESCRIPTION OF PROPERTY				No. School District	Indicate Homestead Yes or No	Indicate Agricultural Yes or No	Indicate Type of Property	TRUE AND FULL VALUATIONS						Total Assessed Value as Equalized by the Board of Review	FINAL EQUALIZED VALUE	VALUATIONS BY SCHOOL DISTRICTS AS EQUALIZED BY DEPARTMENT OF TAXATION						SPECIAL TAXES	TOTAL TAXES	PAID	WHEN PAID	Number of Receipt	March Settlement 1959	June Settlement 1959	Penalty	November Settlement 1959	Penalty	Collections to First Monday in January 1960	Penalty	Delinquent on First Monday in January 1960	Total Delinquent Tax and Penalty	REMARKS													
		SUBDIVISION	Sec. or Lot	Town or Block	Rsq.					Number of Acres of Land	LAND Exclusive of Structures and Improvements	BUILDINGS and Other Structures	MACHINERY Permanently Attached to Real Estate	TOTAL True and Full Value	RURAL			ALL OTHER			TOTAL ASSESSED VALUE	District No.	District No.																District No.	District No.	District No.	District No.	Tax including State Homestead	State Tax on Non-Homestead							
															Homestead Up to \$4,000 20%			Over \$4,000 and Non-Homestead 33 1/3%	Timber Land Class 3e 20%	Homestead Up to \$4,000 25%																									Over \$4,000 and Non-Homestead 40%	MACHINERY Permanently Attached to Real Estate 33 1/3%	Rate.....	Rate.....	Rate.....	Rate.....	Rate.....
															Dollars			Dollars	Dollars	Dollars																									Dollars	Dollars	Dollars	Dollars	Dollars	Dollars	Dollars
Daisy S. Coffey				40 10	Lot 1, Highway 34, 140 26		118	70	400	T	480			480		160					160		160																												
"	"			24 50	Lot 2			70	400	R	220	80		300		100					100		100																					8107							
"	"			40				70	400	T	351			351		117					117		117																												
Chifford L. & Dean Smith				40				70	400	R	310	111		321		107					107		107																												
				24 89	Lot 3, less 7.300' & less 200' along lake & NW cor of Lot 3			70	400	R	270	420		690		230					230		230																												
Orville A. & Gladys A. Flory John R. & James A. Rolfe State of Minnesota				33 24	Lot 4			70	400	R	495	222		717		239					239		239																												
State of Minnesota				318	N 300' of Lot 3			70	400	L	180			180		60					60		60																												
State of Minnesota				40	SE 1/4 of SE 1/4			40	400	F	375	880		1255		251					251		251																												
State of Minnesota				40	NW 1/4 of SE 1/4			40	400	F	190			190		38					38		38																												
State of Minnesota				40	SW 1/4 of SE 1/4			40	400	T	320			320		64					64		64																												
State of Minnesota				40	SE 1/4 of SE 1/4 200' along lake in lot cov. of Lot 3			40	400	F	305	720		1025		205					205		205																												
State of Minnesota				70 70				70	700	L	65	220		285		95					95		95																												
Franklin M. Diedrich																																																			
"	"																																																		
Emmatt Dodd																																																			
Gordon Hollen																																																			
Elmer & Ruth D. Steffy																																																			

Back Oak Park Garage Oak Lawn Beach Birchwood Terrace Day Day Point

Form 502 VILLAGE-SAVE PROPERTY, MINNESOTA

Assessment Roll and Tax List of Real Property in the Town of Thunder Lake

\* Indicate Type of Property: R-Residential, C-Commercial, I-Industrial, U-Utility, F-Farm, L-Lakeshore, T-Timber, M-Mineral

Table with columns: IN WHOSE NAME ASSESSED, TO WHOM TRANSFERRED, DESCRIPTION OF PROPERTY, TRUE AND FULL VALUATIONS, ASSESSED VALUATIONS, FINAL EQUALIZED VALUE. Includes handwritten entries for Robert & Genevieve Grantall & William & Susan Grantall, and James & Billie R. Brown.

Cass County, Minnesota, for Taxes for the Year 1958.

Table with columns: SOLD FOR TAXES, VALUATIONS BY SCHOOL DISTRICTS AS EQUALIZED BY DEPARTMENT OF TAXATION, Tax including State Homestead, State Tax on Non-Homestead, SPECIAL TAXES, TOTAL TAXES, PAID, WHEN PAID, Number of Receipt, March Settlement 1959, June Settlement 1959, November Settlement 1959, Penalty, Collections to First Monday in January 1960, Delinquent on First Monday in January 1960, Total Delinquent Tax and Penalty, REMARKS. Includes handwritten entries for 1958 taxes and delinquencies.



# PAGES

# 44

# THRU

# 52

# BLANK

Assessment Roll and Tax List of Real Property in the \_\_\_\_\_ of \_\_\_\_\_

\* Indicate Type of Property: R-Residential, C-Commercial, I-Industrial, U-Utility, F-Farm

Form 500

IN WHOSE NAME ASSESSED

TO WHOM TRANSFERRED

SUBDIVISION	Sec. or Lot	Town or Block	Rng.	Number of Acres of Land		No. School District	Indicate Homestead Tax or No	Indicate Agricultural Tax or No	Indicate Type of Property	TRUE AND FULL VALUATIONS				ASSESSED				
				LAND Exclusive of Structures and Improvements	BUILDINGS and Other Structures					MACHINERY Permanently Attached to Real Estate	TOTAL True and Full Value	RURAL		AL				
				Acres	100ths					Dollars	Dollars	Dollars	Dollars	Homestead Up to \$4,000 20%	Over \$4,000 and Non-Homestead 33 1/3%	Timber Land Class 3e 20%	Homestead Up to \$4,000 25%	
1	N E 1/4 of N E 1/4																	
2	N W 1/4 of N E 1/4																	
3	S W 1/4 of N E 1/4																	
4	S E 1/4 of N E 1/4																	
5																		
6	N E 1/4 of N W 1/4																	
7	N W 1/4 of N W 1/4																	
8	S W 1/4 of N W 1/4																	
9	S E 1/4 of N W 1/4																	
10																		
11	N E 1/4 of S W 1/4																	
12	N W 1/4 of S W 1/4																	
13	S W 1/4 of S W 1/4																	
14	S E 1/4 of S W 1/4																	
15																		
16	N E 1/4 of S E 1/4																	
17	N W 1/4 of S E 1/4																	
18	S W 1/4 of S E 1/4																	
19	S E 1/4 of S E 1/4																	
20																		

Cass County, Minnesota, for Taxes for the Year 1958.

State Tax on Non-Homestead	SPECIAL TAXES	TOTAL TAXES	PAID	WHEN PAID	Number of Receipt	March Settlement 1958	June Settlement 1958	Penalty	November Settlement 1958	Penalty	Collections to First Monday in January 1959	Penalty	Delinquent on First Monday in January 1959	Total Delinquent Tax and Penalty	REMARKS
.....Mills				Month Day Year		\$ cts.	\$ cts.	\$ cts.	\$ cts.	\$ cts.	\$ cts.	\$ cts.	\$ cts.	\$ cts.	

Cooley Trail Dock  
Oak Park Beach  
Oak Lawn Beach  
Birchwood Terrace  
Deer Bay Point

Assessment Roll and Tax List of Real Property in the Down of Thunder Lake

\* Indicate Type of Property: R-Residential, C-Commercial, I-Industrial, U-Utility, F-Farm, L-Lakeshore, T-Timber, M-Mineral

Table with columns: IN WHOSE NAME ASSESSED, TO WHOM TRANSFERRED, DESCRIPTION OF PROPERTY, TRUE AND FULL VALUATIONS, ASSESSED VALUATIONS, and FINAL EQUALIZED VALUE. Includes handwritten entries like 'Elmer Dishon' and 'Franklin Manufacturing Company, Inc.'.

Cass County, Minnesota, for Taxes for the Year 1958.

Table with columns: SOLD FOR TAXES, VALUATIONS BY SCHOOL DISTRICTS AS EQUALIZED BY DEPARTMENT OF TAXATION, SPECIAL TAXES, TOTAL TAXES, PAID, WHEN PAID, Number of Receipt, March Settlement 1959, June Settlement 1959, November Settlement 1959, Collections to First Monday in January 1960, Delinquent on First Monday in January 1960, Total Delinquent Tax and Penalty, REMARKS. Includes handwritten entries like 'PAID IN FULL APR 22 1959'.

Cooley Trail Duck Pass

Plat of P. F. B.

1st Oak Park Beach

Oak Lawn Beach

Richwood Terrace

Del Ray Point

Assessment Roll and Tax List of Real Property in the Down of Thunder Lake

Cass County, Minnesota, for Taxes for the Year 1958.

Form 80 - ILLINOIS STATE BOARD OF TAXATION \* Indicate Type of Property: R-Residential, C-Commercial, I-Industrial, U-Utility, F-Farm, L-Lakeshore, T-Timber, M-Mineral

Table with columns for Description of Property, True and Full Valuations, Assessed Valuations, Final Equalized Value, Sold for Taxes, and various tax payments. Includes handwritten entries for names like Paul E. Musick, Peter A. & Emma Storeb, and John M. McMillen.

Cooley Trail Park

Oak Park Beaches

Plat of P. F. G. 1st Add'n to Birchwood Oak Lawn Beach Birchwood Terrace Del Ray Point

Assessment Roll and Tax List of Real Property in the Town of Thunder Lake

Cass County, Minnesota, for Taxes for the Year 1958.

Form 50 Indicate Type of Property: R-Residential, C-Commercial, I-Industrial, U-Utility, F-Farm, L-Lakeshore, T-Timber, M-Mineral

Main table with columns: IN WHOSE NAME ASSESSED, TO WHOM TRANSFERRED, DESCRIPTION OF PROPERTY, TRUE AND FULL VALUATIONS, ASSESSED VALUATIONS, VALUATIONS BY SCHOOL DISTRICTS AS EQUALIZED BY DEPARTMENT OF TAXATION, TAXES, PAID, WHEN PAID, etc.

Cooley Trail Park

Oak Park Beaches

1st Add'n to Birchwood Oak Lawn Beach Birchwood Terrace Del Ray Point

Assessment Roll and Tax List of Real Property in the Town of Thunder Lake, Cass County, Minnesota, for Taxes for the Year 1958.

Table with columns for property description, valuations, taxes, and payments. Includes handwritten entries for owners like Charles A. & Ada Graham and Donald D. & Lorene A. Dummell. Includes 'SOLD FOR TAXES' entries for lots 6 and 8.

Back Cooley In Park Oak Park Beaches

6 1st Addn. to Birchwood Oak Lawn Beach

Birchwood Terrace Del Ray Point



Assessment Roll and Tax List of Real Property in the Town of Dundas Lake

Cass County, Minnesota, for Taxes for the Year 1958.

Form 50 Indicate Type of Property: R-Residential, C-Commercial, I-Industrial, U-Utility, F-Farm, L-Lakeshore, T-Timber, M-Mineral

Table with columns: IN WHOSE NAME ASSESSED, TO WHOM TRANSFERRED, SUBDIVISION, DESCRIPTION OF PROPERTY, TRUE AND FULL VALUATIONS, ASSESSED VALUATIONS, VALUATIONS BY SCHOOL DISTRICTS AS EQUALIZED BY DEPARTMENT OF TAXATION, TAXES, PAID, WHEN PAID, and REMARKS. Includes handwritten entries for John Hohaneck, Jack Hohaneck, Betty & Roy Ostlund, Michael and William Hetry, Marjory M. & A.S. Ostlander, Jr., Helen & Rose Damon, and Clara P. Remain.

Duck, Cooley, Oak Park Beaches, Oak Lawn Beaches

1st Addn to Birchwood, Peter's Bay, Birchwood Terrace, Dal Bay Point









Assessment Roll and Tax List of Real Property in the Town of Thunder Lake

Indicate Type of Property: R-Residential, C-Commercial, I-Industrial, U-Utility, F-Farm, L-Lakeshore, T-Timber, M-Mineral

Table with columns: IN WHOSE NAME ASSESSED, TO WHOM TRANSFERRED, SUBDIVISION, DESCRIPTION OF PROPERTY, TRUE AND FULL VALUATIONS, ASSESSED VALUATIONS, FINAL EQUALIZED VALUE.

60 60 20 20

Cass County, Minnesota, for Taxes for the Year 1958.

Table with columns: SOLD FOR TAXES, VALUATIONS BY SCHOOL DISTRICTS AS EQUALIZED BY DEPARTMENT OF TAXATION, PAID, WHEN PAID, REMARKS.

20 476 12 488 4 88

Del Ray Point Birchwood Terrace Oak Park Beaches Cooley Duck

Plat 11722, 1st Add'n to Birchwood Meter's Bay Shore

Assessment Roll and Tax List of Real Property in the Town of Thunder Lake

Indicate Type of Property: R-Residential, C-Commercial, I-Industrial, U-Utility, F-Farm, L-Lakeshore, T-Timber, M-Mineral

Cass County, Minnesota, for Taxes for the Year 1958.

Table with columns: IN WHOSE NAME ASSESSED, TO WHOM TRANSFERRED, DESCRIPTION OF PROPERTY, TRUE AND FULL VALUATIONS, ASSESSED VALUATIONS (RURAL, ALL OTHER, MACHINERY), TOTAL ASSESSED VALUE, and FINAL EQUALIZED VALUE.

Table with columns: VALUATIONS BY SCHOOL DISTRICTS AS EQUALIZED BY DEPARTMENT OF TAXATION, SOLD FOR TAXES, SPECIAL TAXES, TOTAL TAXES, PAID, WHEN PAID, and REMARKS.

Vertical text on the left edge: Duck, Cooley, Oak Park Beaches, Oak Lawn Beaches, Birchwood Terrace, Del Ray Point.

Vertical text on the right edge: Plat No. 11385, 1st Add'n to Birchwood, Miller's Bay Shore.

Assessment Roll and Tax List of Real Property in the Town of Thunder Lake

Indicate Type of Property: R-Residential, C-Commercial, I-Industrial, U-Utility, F-Farm, L-Lakeshore, T-Timber, M-Mineral

Cass County, Minnesota, for Taxes for the Year 1958.

Table with columns for IN WHOSE NAME ASSESSED, TO WHOM TRANSFERRED, DESCRIPTION OF PROPERTY, TRUE AND FULL VALUATIONS, ASSESSED VALUATIONS, VALUATIONS BY SCHOOL DISTRICTS AS EQUALIZED BY DEPARTMENT OF TAXATION, SOLD FOR TAXES, PAID, WHEN PAID, and REMARKS. Includes handwritten entries for Del Ray Point and tax payment records.

Vertical text on the left edge: Duck, Cooley, Oak Park Beaches, Oak Lawn Beaches, Birchwood Terrace, Del Ray Point

Vertical text on the right edge: Plat of P.F. 6, 1st Add'l to Birchwood Terrace, Del Ray Point



Assessment Roll and Tax List of Real Property in the Town of Thunder Lake

Indicate Type of Property: R-Residential, C-Commercial, I-Industrial, U-Utility, F-Farm, L-Lakeshore, T-Timber, M-Mineral

Cass County, Minnesota, for Taxes for the Year 1958.

Table with columns: IN WHOSE NAME ASSESSED, TO WHOM TRANSFERRED, SUBDIVISION, DESCRIPTION OF PROPERTY, TRUE AND FULL VALUATIONS, ASSESSED VALUATIONS (RURAL, ALL OTHER, MACHINERY), VALUATIONS BY SCHOOL DISTRICTS AS EQUALIZED BY DEPARTMENT OF TAXATION, SOLD FOR TAXES, PAID, WHEN PAID, Number of Receipt, March Settlement 1959, June Settlement 1959, November Settlement 1959, Collections to First Monday in January 1960, Delinquent on First Monday in January 1960, Total Delinquent Tax and Penalty, REMARKS.

Plat of P. 6, Oak Park Beach, Oak Lawn Beaches, Birchwood Terrace, Del Ray Point

1st Add'n to Birchwood, Peter's Bay Shore

Emari O. & Stella C. Rosendahl
Carl E. & Gladys V. Hallquist
Geo. Larish, et al
Albert W. & Ora Parrish
Helen & Vivian Parrish
John Sukm, Helen & Anna Johnson
Vernon & Ethel Sinclair
Ray & Borghild Kollery
Ray & Emily Hendrickson
Merian & Beverly M. Parrish
George L. & Vivian S. Parrish
Albert & Ora Parrish

Plat of P. 6
Part of Sect 3 Sec 9-140-26

400 2384 2754 918 918

918 2196 592 22388

488 169 01 15 85 3414

Assessment Roll and Tax List of Real Property in the Town of Thunder Lake

Indicate Type of Property: R-Residential, C-Commercial, I-Industrial, U-Utility, F-Farm, L-Lakeshore, T-Timber, M-Mineral

Cass County, Minnesota, for Taxes for the Year 1958.

Table with columns: IN WHOSE NAME ASSESSED, TO WHOM TRANSFERRED, SUBDIVISION, DESCRIPTION OF PROPERTY, TRUE AND FULL VALUATIONS, ASSESSED VALUATIONS, VALUATIONS BY SCHOOL DISTRICTS AS EQUALIZED BY DEPARTMENT OF TAXATION, TAXES, PAID, WHEN PAID, Number of Receipts, March Settlement 1959, June Settlement 1959, November Settlement 1959, Collections to First Monday in January 1960, Delinquent on First Monday in January 1960, Total Delinquent Tax and Penalty, REMARKS.

Assessment Roll and Tax List of Real Property in the Town of Thunder Lake, Minnesota

Cass County, Minnesota, for Taxes for the Year 1958.

Form 30 \*Indicate Type of Property: R-Residential, C-Commercial, I-Industrial, U-Utility, F-Farm, L-Lakeshore, T-Timber, M-Mineral

Table with columns for IN WHOSE NAME ASSESSED, TO WHOM TRANSFERRED, DESCRIPTION OF PROPERTY, TRUE AND FULL VALUATIONS, ASSESSED VALUATIONS, VALUATIONS BY SCHOOL DISTRICTS AS EQUALIZED BY DEPARTMENT OF TAXATION, SOLD FOR TAXES, PAID, WHEN PAID, and REMARKS.

Plat of... Birchwood Terr... Del Bay Point... Teter's Bay Shore... 1st Addition to Birchwood Terr...

David M. Tilkner
" "
" "
" "
" "
" "
Donald David Tilkner
Gardie L. & Rose A. Misener
Special R + Marion A. Teter
Gardie L. & Rose A. Misener
Kenneth B. & Monica Tilkner

Subdivision: Peter's Bay Shore
Part of Govt Lot 2 Sec 16-140-26

450 601 961 72 197 269

1472 197 269 6388 128 6516 6516

11808
"
"
"
"
"
"
11805
11806
11807

