

ASSESSMENT & TAX LIST - 1956

Thunder Lake

NAMES OF OWNERS

TABULAR SCHEDULE OF VALUATIONS,

LEVIED IN THE Town OF Thunder Lake

School District No.	VALUATION BY SCHOOL DISTRICTS				RATE OF STATE TAXES		RATE OF COUNTY TAXES										RATE OF TOWN TAXES										RATE OF									
	Agri-cultural Lands	Non-Agri-cultural Lands	Personal Property	Total Value of all Property except Money and Credits	Total Rate of State Tax	Total Rate of County Tax	Rev.	R. & B.	Wel-fare	Bonds and Int.	R. & B. Sdg.	Ass. Co. Sdg.	Welfare Ref.	Total Rate of Town Tax	Rev.	R. & B.	Drag Tax	State Loan	Local	Spe-cial	State Loan	Defi-cien-cy	Tui-tion	Trans-porta-tion	C.O.											
C1	27,091	18,854	1166	52,175	H. 3.81	106.42	27.08	14.18	47.70	7.74	2.00	.5	6.7	11.5	1.	10.	29.2	1.25	1.50	20.7	20.7	.73	.73	9.6	9.6											
			778,506.4																																	
					N. 11.534																															
					9.15																															

Assessed Value	Rural	All Other	Personal Property	Total
Homestead	10,899			10,899
Non-Homestead	35,046		6230	41,276
Total	45,945		6230	52,175

RATES AND TAXES

COUNTY OF CASS, STATE OF MINNESOTA

SCHOOL TAXES		LOCAL 1 MILL AND SPECIAL SCHOOL TAXES BY DISTRICTS										ALL OTHER TAXES		
Total Rate of Sch'l Tax	Total Rate of all Taxes	Local 1 Mill	Special	State Loan	Def. Jang. C.O.	Total School Taxes	FUNDS	Rate	Amounts					
57.03	196.46	2826	706.42		58492	161150	State - Non-Homestead		221.02					
82.03	221.46	2392	1195.90		49510	196199	State - Homestead		198.79					
		5218	190232		108002	357349	County Revenue,		1413.00					
							County Road and Bridge,		739.94					
							County Welfare,		2488.85					
							Bonds and Interest		403.90					
							R. & B. Bldg.		104.35					
							Ass. Co. Sdg.		26.09					
							Welfare Ref.		376.70					
							Town Revenue,		349.57					
							Town Road and Bridge,		600.01					
							Town Drag,		52.18					
							Town State Loan,		52.175					
							Here		1523.51					
							School Local 1 Mill,		52.18					
							School Special,		1902.32					
							School State Loan,							
							Deficiency		1080.02					
							Tuition							
							Transportation		38.09					
							Capital Outlay		500.88					
									3573.49					

Total Taxes Real Estate 9685.76
 Pers. Prop. 1383.88
 Total 11069.64

Total Number of Acres 7118.36
 State of Minnesota, }
 COUNTY OF CASS } ss.
 Auditor of said County and State aforesaid, do hereby certify that the foregoing is a true and correct Schedule, showing the valuation of all the taxable property, in the Town of Thunder Lake, in said County, the several rates of Taxation and Totals of the several Tax Funds levied thereon for the year A. D. 1915.

Witness my hand and official seal, this 3rd day of January, A. D. 1915.

SEAL

L. C. Peterson
 County Auditor

By Helen Gilbert, Deputy

Real Estate

Cooley, Merrill

Duck Cass

Edin

Oak Park Beaches

Linn Beach

Birchwood Terrace

F. J. Ray Point

Assessment Roll and Tax List of Real Property in the town of Thunder Lake

Indicate Type of Property: R-Residential, C-Commercial, I-Industrial, U-Utility, F-Farm, L-Lakeshore, T-Timber, M-Mineral

Cass County, Minnesota, for Taxes for the Year 1956.

Table with columns: IN WHOSE NAME ASSESSED, TO WHOM TRANSFERRED, DESCRIPTION OF PROPERTY, TRUE AND FULL VALUATIONS, ASSESSED VALUATIONS, VALUATIONS BY SCHOOL DISTRICTS AS EQUALIZED BY DEPARTMENT OF TAXATION, SOLD FOR TAXES, SPECIAL TAXES, TOTAL TAXES, PAID, WHEN PAID, Number of Receipt, March Settlement, June Settlement, November Settlement, Collections to First Monday in January, Delinquent on First Monday in January, Total Delinquent Tax and Penalty, REMARKS.

100' x 500' of Lot 2 + 1/4 ac. of Lot 3

Sec-6-140-26

625'	625'	625'	625'	625'	625'	625'	625'
A	B	C	D	E	F	G	H
Howard Blukm	Arthur R. Blukm	Earl M. Blukm	Earl M. Blukm	Eleanor Blukm	Emma Morse	Ruben Miy	Thora J. Whaler
.14 acs	.14 acs	.14 acs	.14 acs	.14 acs	.14 acs	.14 acs	.14 acs

100'
1/4 ac. of
Lot 2

1/4 ac. of
Lot 2
1/4 ac. of
Lot 3

Julipee Lake

Assessment Roll and Tax List of Real Property in the Town of *Lawson* of *Shanabur Lake*

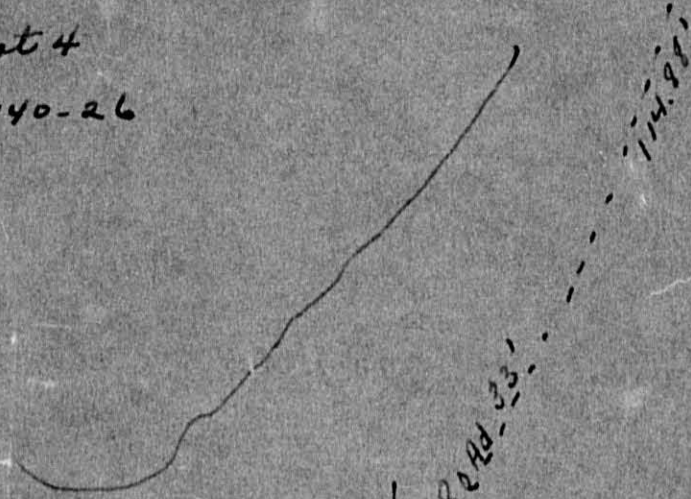
* Indicate Type of Property: R-Residential, C-Commercial, I-Industrial, U-Utility, F-Farm, L-Lakeshore, T-Timber, M-Mineral

Table with columns: IN WHOSE NAME ASSESSED, TO WHOM TRANSFERRED, DESCRIPTION OF PROPERTY, TRUE AND FULL VALUATIONS, ASSESSED VALUATIONS, FINAL EQUALIZED VALUE. Includes handwritten entries for John E. Lange, E. C. Waterhouse, State of Minnesota, Frank P. Henke, Louis C. & Anna C. Henke, and Anna C. & Louis C. Henke, J. & Michael Carlson.

Cass County, Minnesota, for Taxes for the Year 1956.

Table with columns: SOLD FOR TAXES, VALUATIONS BY SCHOOL DISTRICTS AS EQUALIZED BY DEPARTMENT OF TAXATION, SPECIAL TAXES, TOTAL TAXES, PAID, WHEN PAID, Number of Receipt, March Settlement 1957, June Settlement 1957, November Settlement 1957, Collections to First Monday in January 1958, Delinquent on First Monday in January 1958, Total Delinquent Tax and Penalty, REMARKS. Includes handwritten tax calculations and payment dates.

Lot 4
Sec. 8-140-26



30'

280'

		150'
	Nyggaard	150'
	267.3'	
	Waterhouse	
	267.3'	
	S. & A. Henke	300'
	267.3'	
	S. & A. Henke	200'
	267.3'	
	Frank & Henke	150'
Block 2	3	
	2	
	1	

Thunder Ave.

Block 1

26
25
24
23
22
21
20
19
18
17
16
15
14
13
12
11
10
9
8
7
6
5
4
3
2

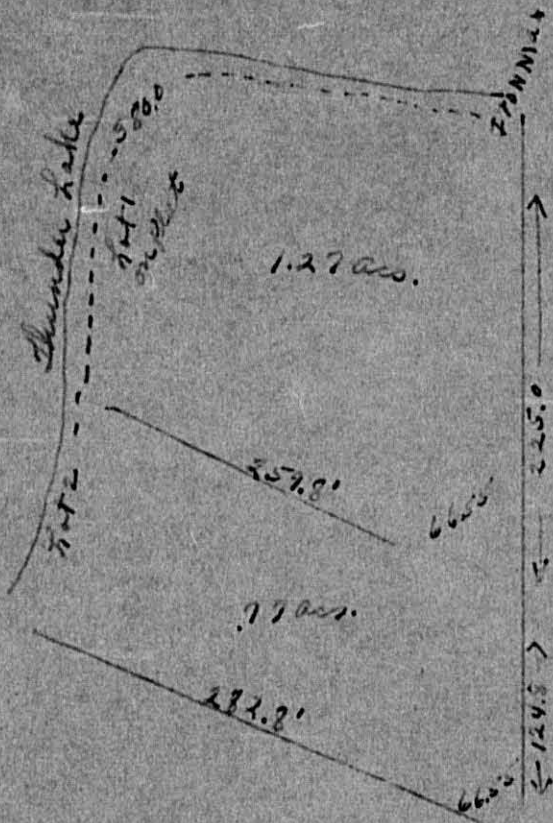
Graded Top. Road

Assessment Roll and Tax List of Real Property in the Town of Thunder Lake

Cass County, Minnesota, for Taxes for the Year 1956.

Table with columns: IN WHOSE NAME ASSESSED, TO WHOM TRANSFERRED, DESCRIPTION OF PROPERTY, TRUE AND FULL VALUATIONS, ASSESSED VALUATIONS, VALUATIONS BY SCHOOL DISTRICTS AS EQUALIZED BY DEPARTMENT OF TAXATION, SOLD FOR TAXES, PAID, WHEN PAID, March Settlement, June Settlement, Penalty, November Settlement, Penalty, Collections to First Monday in January 1955, Delinquent on First Monday in January 1955, Total Delinquent Tax and Penalty, REMARKS.

14.58 ac. - 7000
 Plat of P. P. 6



Sec. 9-140-26
 Cont. cont 3

Cont. cont. 3.

10820

Bar north

1/2 in. Plat founded in place

Section

9
 16

Assessment Roll and Tax List of Real Property in the Town of Thunder Lake

Indicate Type of Property: R-Residential, C-Commercial, I-Industrial, U-Utility, F-Farm, L-Lakeshore, T-Timber, M-Mineral

Cass County, Minnesota, for Taxes for the Year 1956.

Main table with columns: IN WHOSE NAME ASSESSED, TO WHOM TRANSFERRED, DESCRIPTION OF PROPERTY, TRUE AND FULL VALUATIONS, ASSESSED VALUATIONS, VALUATIONS BY SCHOOL DISTRICTS AS EQUALIZED BY DEPARTMENT OF TAXATION, TAXES, PAID, WHEN PAID, etc.

Clifford H. & Hazelle C. Thomas
Lawrence J. & Joma Lynch
Louis S. Pintok
State of Minnesota
Lawrence Lynch
John F. & Christine M. Brigham
Frank M. Steiner, Trustee

Raymond & Elizabeth C. Hammel
That part of Lot 3 Sec. 10-140-26 Des. as follows: starting at a pt. on the E. Shore of Big Thunder Lake where Hy# 6 leaves said Lake, going in NW'ly. direction, thence along the lake shore in a NW'ly direction, a distance of 100', thence N. parallel with the W. line of said lot 3, to said Hy# 6, thence SE'ly along said Hy. # 6 to beginning.

That part of lot 3 Sec. 10-140-26 described as follows Beg. on the lake shore of Big Thunder Lake 100' NW of the pt. where Rt. Wy. of new Hy# 6 leaves the lake as pt. of Begin. thence NW'ly. along shore of said Big Thunder Lake to the W. line of said Lot 3, Approx. 170'; thence N. along the W. line of said lot 3 to Rt. Wy. of Hy #6 thence S. and SE'ly along W. side of said Hy #6 to the NW. Cor. of Theodore Hanson tract; thence S'ly along W. side of Theo. Hanson tract to pt. of beginning.

Emmett & Mary Kruse

Vertical text on the right edge of the page, possibly a page number or reference.

Assessment Roll and Tax List of Real Property in the Town of Thunder Lake

Cass County, Minnesota, for Taxes for the Year 1956.

Form 502 (1-56) MINN. STATE GOVERNMENT, MINNEAPOLIS. * Indicate Type of Property: R-Residential, C-Commercial, I-Industrial, U-Utility, F-Farm, L-Lakeshore, T-Timber, M-Mineral

Table with columns: IN WHOSE NAME ASSESSED, TO WHOM TRANSFERRED, DESCRIPTION OF PROPERTY, TRUE AND FULL VALUATIONS, ASSESSED VALUATIONS, VALUATIONS BY SCHOOL DISTRICTS AS EQUALIZED BY DEPARTMENT OF TAXATION, SOLD FOR TAXES, SPECIAL TAXES, TOTAL TAXES, PAID, WHEN PAID, Number of Receipt, March Settlement 1957, June Settlement 1957, Penalty, November Settlement 1957, Collections to First Monday in January 1958, Delinquent on First Monday in January 1958, Total Delinquent Tax and Penalty, REMARKS.

Assessment Roll and Tax List of Real Property in the Town of Shandon Lake

Indicate Type of Property: R-Residential, G-Commercial, I-Industrial, U-Utility, F-Farm, L-Lakeshore, T-Timber, M-Mineral

Table with columns: IN WHOSE NAME ASSESSED, TO WHOM TRANSFERRED, DESCRIPTION OF PROPERTY, TRUE AND FULL VALUATIONS (LAND, BUILDINGS, MACHINERY, RURAL, ALL OTHER), ASSESSED VALUATIONS (RURAL, ALL OTHER), and FINAL EQUALIZED VALUE.

Cass County, Minnesota, for Taxes for the Year 1956.

Table with columns: SOLD FOR TAXES, VALUATIONS BY SCHOOL DISTRICTS AS EQUALIZED BY DEPARTMENT OF TAXATION, Tax including State Homestead, State Tax on Non-Homestead, SPECIAL TAXES, TOTAL TAXES, PAID, WHEN PAID, Number of Receipt, March Settlement 1957, June Settlement 1957, November Settlement 1957, Penalty, Collections to First Monday in January 1958, Delinquent on First Monday in January 1958, Total Delinquent Tax and Penalty, REMARKS.

Assessment Roll and Tax List of Real Property in the Town of Thunder Lake

Indicate Type of Property: R-Residential, C-Commercial, I-Industrial, U-Utility, F-Farm, L-Lakeshore, T-Timber, M-Mineral

Cass County, Minnesota, for Taxes for the Year 1956.

Table with columns: IN WHOSE NAME ASSESSED, TO WHOM TRANSFERRED, SUBDIVISION, TRUE AND FULL VALUATIONS, ASSESSED VALUATIONS, VALUATIONS BY SCHOOL DISTRICTS AS EQUALIZED BY DEPARTMENT OF TAXATION, SOLD FOR TAXES, PAID, WHEN PAID, Number of Receipt, March Settlement 1957, June Settlement 1957, Penalty, November Settlement 1957, Collections to First Monday in January 1958, Delinquent on First Monday in January 1958, Total Delinquent Tax and Penalty, REMARKS.

Assessment Roll and Tax List of Real Property in the Town of Thunder Lake, Cass County, Minnesota, for Taxes for the Year 1956.

* Indicate Type of Property: R-Residential, C-Commercial, I-Industrial, U-Utility, F-Farm, L-Lakeshore, T-Timber, M-Mineral

Table with columns: IN WHOSE NAME ASSESSED, TO WHOM TRANSFERRED, DESCRIPTION OF PROPERTY, TRUE AND FULL VALUATIONS, ASSESSED VALUATIONS, VALUATIONS BY SCHOOL DISTRICTS AS EQUALIZED BY DEPARTMENT OF TAXATION, Tax including State Homestead, State Tax on Non-Homestead, SPECIAL TAXES, TOTAL TAXES, PAID, WHEN PAID, Number of Receipt, March Settlement 1957, June Settlement 1957, Penalty, November Settlement 1957, Penalty, Collections to First Monday in January 1958, Penalty, Delinquent on First Monday in January 1958, Total Delinquent Tax and Penalty, REMARKS.

Assessment Roll and Tax List of Real Property in the Town of Thunder Lake

Indicate Type of Property: R-Residential, C-Commercial, I-Industrial, U-Utility, F-Farm, L-Lakeshore, T-Timber, M-Mineral

Cass County, Minnesota, for Taxes for the Year 1956

Table with columns: IN WHOSE NAME ASSESSED, TO WHOM TRANSFERRED, DESCRIPTION OF PROPERTY, TRUE AND FULL VALUATIONS, ASSESSED VALUATIONS, VALUATIONS BY SCHOOL DISTRICTS AS EQUALIZED BY DEPARTMENT OF TAXATION, TAXES, PAID, WHEN PAID, etc.

Sec. 27. 140-26

Lat 5

NE 1/4 of SE 1/4

3.00 acs. E. Lester Thrall

4.00 acs. F. C. White

5.5 acs.

Willis & Alta H. Copeman

14.00 acs.

Assessment Roll and Tax List of Real Property in the Town of Thunder Lake

Cass County, Minnesota, for Taxes for the Year 1956.

Form 50 (5-54) UNIFORM COMPTON, MINNAPOLIS * Indicate Type of Property: R-Residential, C-Commercial, I-Industrial, U-Utility, F-Farm, L-Lakeshore, T-Timber, M-Mineral

Table with columns: IN WHOSE NAME ASSESSED, TO WHOM TRANSFERRED, DESCRIPTION OF PROPERTY, TRUE AND FULL VALUATIONS, ASSESSED VALUATIONS, VALUATIONS BY SCHOOL DISTRICTS AS EQUALIZED BY DEPARTMENT OF TAXATION, TAXES, PAID, WHEN PAID, Number of Receipt, March Settlement 1957, June Settlement 1957, November Settlement 1957, Penalty, Collections to First Monday in January 1958, Delinquent on First Monday in January 1958, Total Delinquent Tax and Penalty, REMARKS.

Vertical text on the right edge of the page, including 'Cooler', 'Duck', 'Ad'n', 'Terrace', 'Oak Park Beaches', 'Ivan Beach', 'Birkwood Terrace', 'F. Del Ray Point'.

Assessment Roll and Tax List of Real Property in the Town of Thunder Lake

* Indicate Type of Property: R-Residential, C-Commercial, I-Industrial, U-Utility, F-Farm, L-Lakeshore, T-Timber, M-Mineral

Cass County, Minnesota, for Taxes for the Year 1956.

Table with columns: IN WHOSE NAME ASSESSED, TO WHOM TRANSFERRED, DESCRIPTION OF PROPERTY, TRUE AND FULL VALUATIONS, ASSESSED VALUATIONS, VALUATIONS BY SCHOOL DISTRICTS AS EQUALIZED BY DEPARTMENT OF TAXATION, SOLD FOR TAXES, SPECIAL TAXES, TOTAL TAXES, PAID, WHEN PAID, Number of Receipt, March Settlement 1957, June Settlement 1957, Penalty, November Settlement 1957, Collections to First Monday in January 1958, Penalty, Delinquent on First Monday in January 1958, Total Delinquent Tax and Penalty, REMARKS.

Vertical text on the right edge of the page: Oak Park Beaches, Birchwood Terrace, Del Ray Point

Assessment Roll and Tax List of Real Property in the Town of Thunder Lake

Indicate Type of Property: R-Residential, C-Commercial, I-Industrial, U-Utility, F-Farm, L-Lakeshore, T-Timber, M-Mineral

Cass County, Minnesota, for Taxes for the Year 1956.

Form 50 (56) UNLESS OTHERWISE SPECIFIED

Table with columns: IN WHOSE NAME ASSESSED, TO WHOM TRANSFERRED, DESCRIPTION OF PROPERTY, TRUE AND FULL VALUATIONS, ASSESSED VALUATIONS, VALUATIONS BY SCHOOL DISTRICTS AS EQUALIZED BY DEPARTMENT OF TAXATION, TAXES, PAID, WHEN PAID, Number of Receipt, March Settlement 1957, June Settlement 1957, November Settlement 1957, Collections to First Monday in January 1958, Delinquent on First Monday in January 1958, Total Delinquent Tax and Penalty, REMARKS.

Cooley Trail Duck Pass

Oak Park Terrace

1st Add'n to Birchwood Terrace

Oak Lawn Beach

Birchwood Terrace

F. Del Ray Point

Assessment Roll and Tax List of Real Property in the Town of Thunder Lake

Indicate Type of Property: R-Residential, C-Commercial, I-Industrial, U-Utility, F-Farm, L-Lakeshore, T-Timber, M-Mineral

Cass County, Minnesota, for Taxes for the Year 1956.

Table with columns: IN WHOSE NAME ASSESSED, TO WHOM TRANSFERRED, DESCRIPTION OF PROPERTY, TRUE AND FULL VALUATIONS, ASSESSED VALUATIONS, VALUATIONS BY SCHOOL DISTRICTS AS EQUALIZED BY DEPARTMENT OF TAXATION, SOLD FOR TAXES, SPECIAL TAXES, TOTAL TAXES, PAID, WHEN PAID, Number of Receipt, March Settlement 1957, June Settlement 1957, November Settlement 1957, Collections to First Monday in January 1958, Delinquent on First Monday in January 1958, Total Delinquent Tax and Penalty, REMARKS.

Coolly Duck Terrace, Oak Lawn Beach, Birchwood Terrace, F. Del Ray Point

1st Add'n to Birchwood Terrace, Birchwood Terrace, F. Del Ray Point

Assessment Roll and Tax List of Real Property in the Town of Thunder Lake

Indicate Type of Property: R-Residential, C-Commercial, I-Industrial, U-Utility, F-Farm, L-Lakeshore, T-Timber, M-Mineral

Cass County, Minnesota, for Taxes for the Year 1956.

Table with columns: IN WHOSE NAME ASSESSED, TO WHOM TRANSFERRED, DESCRIPTION OF PROPERTY, TRUE AND FULL VALUATIONS, ASSESSED VALUATIONS, VALUATIONS BY SCHOOL DISTRICTS AS EQUALIZED BY DEPARTMENT OF TAXATION, TAXES, PAID, WHEN PAID, Number of Receipt, March Settlement 1957, June Settlement 1957, November Settlement 1957, Collections to First Monday in January 1958, Delinquent on First Monday in January 1958, Total Delinquent Tax and Penalty, REMARKS.

Booby Duck, Birchwood Terrace, Oak Lawn Beach at Park Terrace, Birchwood Terrace, Part of P. F. Del Ray Point

1st Add'n to Birchwood Terrace, Part of P. F. Del Ray Point

Assessment Roll and Tax List of Real Property in the Town of *Thunder Lake*

Form 50 (56) - JULY 1955 EDITION, MINNEAPOLIS

Indicate Type of Property: R-Residential, C-Commercial, I-Industrial, U-Utility, F-Farm, L-Lakeshore, T-Timber, M-Mineral

Table with columns: IN WHOSE NAME ASSESSED, TO WHOM TRANSFERRED, DESCRIPTION OF PROPERTY, TRUE AND FULL VALUATIONS (RURAL, ALL OTHER), ASSESSED VALUATIONS, and FINAL EQUALIZED VALUE. Includes handwritten entries for Harlan K. & Mary Louise Nygaard, Carl S. Hage, and Frank K. Henke.

Cass County, Minnesota, for Taxes for the Year 1956.

Table with columns: SOLD FOR TAXES, VALUATIONS BY SCHOOL DISTRICTS AS EQUALIZED BY DEPARTMENT OF TAXATION, SPECIAL TAXES, TOTAL TAXES, PAID, WHEN PAID, Number of Receipt, March Settlement 1957, June Settlement 1957, Penalty, November Settlement 1957, Penalty, Collections to First Monday in January 1958, Delinquent on First Monday in January 1958, Total Delinquent Tax and Penalty, REMARKS. Includes handwritten entries for tax payments and dates.

Vertical text on the left edge of the page: Cooley Duck Terrace, Oak Lawn Beach, Birchwood Terrace.

Vertical text on the right edge of the page: 1st Add'n to Birchwood Terrace, Part of P. F. 6th Ray Point.

Assessment Roll and Tax List of Real Property in the Town of Thunder Lake

Form 5C (56) MILLER-DAY COMPANY, MINNEAPOLIS

Indicate Type of Property: R-Residential, C-Commercial, I-Industrial, U-Utility, F-Farm, L-Lakeshore, T-Timber, M-Mineral

Cass County, Minnesota, for Taxes for the Year 1956.

Table with columns: IN WHOSE NAME ASSESSED, TO WHOM TRANSFERRED, SUBDIVISION, DESCRIPTION OF PROPERTY, TRUE AND FULL VALUATIONS, ASSESSED VALUATIONS, VALUATIONS BY SCHOOL DISTRICTS AS EQUALIZED BY DEPARTMENT OF TAXATION, TAXES, PAID, WHEN PAID, Number of Receipt, March Settlement, June Settlement, November Settlement, Collections to First Monday in January 1958, Delinquent on First Monday in January 1958, Total Delinquent Tax and Penalty, REMARKS.

Cooley Duck Pond, Birchwood Terrace, Oak Lawn Beach & Park Terrace, Del Ray Point

1st Addn to Birchwood Terrace, Part of P. P. 6

Assessment Roll and Tax List of Real Property in the Town of Thunder Lake

Cass County, Minnesota, for Taxes for the Year 1956.

Form 5C (56) MINN. STAT. ANN., CHAP. 261

Indicate Type of Property: R-Residential, C-Commercial, I-Industrial, U-Utility, F-Farm, L-Lakeshore, T-Timber, M-Mineral

Table with columns: IN WHOSE NAME ASSESSED, TO WHOM TRANSFERRED, SUBDIVISION, DESCRIPTION OF PROPERTY, TRU AND FULL VALUATIONS, ASSESSED VALUATIONS, VALUATIONS BY SCHOOL DISTRICTS AS EQUALIZED BY DEPARTMENT OF TAXATION, TAXES, PAID, WHEN PAID, Number of Receipt, March Settlement 1957, June Settlement 1957, Penalty, November Settlement 1957, Penalty, Collections to First Monday in January 1958, Penalty, Delinquent on First Monday in January 1958, Total Delinquent Tax and Penalty, REMARKS.

Del Ray Point Plat of P.F. 6, Birchwood Terrace, Oak Lawn Beach & Park Terrace, 1st Add'n to Birchwood Terrace

Spec, Parcel

