

Assessment & Tax List - 1954

Thunder Lake

INDEX TO SECTIONS

SECTION PAGE

Sec. 1	
" 2	
" 3	
" 4	
" 5	
" 6	
" 7	
" 8	
" 9	
" 10	
" 11	
" 12	
" 13	
" 14	
" 15	
" 16	
" 17	
" 18	
" 19	
" 20	
" 21	
" 22	
" 23	
" 24	
" 25	
" 26	
" 27	
" 28	
" 29	
" 30	
" 31	
" 32	
" 33	
" 34	
" 35	
" 36	

For Convenience of Auditor in Showing Boundaries of School Districts

Township No. 140 Range No. 26 Mer. P. M.

0	5	10	15	20	25
7	8	9	10	11	12
13	14	15	16	17	18
19	20	21	22	23	24
25	26	27	28	29	30
31	32	33	34	35	36

School District #1

All Thunder Lake Township is joined to Sch. Dist. #81 - 8-1951

Returns Showing Grain Received in or Handled by Elevators, Warehouses and Mills in the _____ of _____ in the County of _____ for the Year Ending May 1, 1954.

NAMES OF OWNERS	ADDRESS	Bushels of Wheat	Bushels of Soy Beans	Bushels of Flax	Total No. of Bushels of Wheat, Soy Beans and Flax	★ Tax of 1/2 Mill per Bushel		Bushels of Corn	Bushels of Barley	Bushels of Rye	Bushels of Oats	Bushels of Buckwheat	Bushels of all Other Grains	Total No. Bushels Corn, Barley, Rye, Oats, Buckwheat and all Other Grains	★ Tax of 1/4 Mill Per Bushel		★ Total Tax		REMARKS	
						Dollars	Cts.								Dollars	Cts.	Dollars	Cts.		

Note ★ Assessors will not fill these Columns

Cooler Trail Dock Pass Oak Park Beach Oak Park Beach Oak Park Beach

SUMMARY OF TAX COLLECTION

Original Levy	- - - - -	\$ 10,723.64	
Additions	- - - - -	\$ 5.12	
			\$ 10,728.76
Abatements	- - - - -	\$ 1,451.34	
			\$ 10,592.82
COLLECTIONS			
March Settlement	- - - - -	\$ 1,769.74	
June Settlement	- - - - -	\$ 5,274.27	
November Settlement	- - - - -	\$ 1,815.06	
January Settlement	- - - - -	\$ 102.40	\$ 8,961.47
			\$
Over Collected	- - - - -	\$	
Under Collected	- - - - -	\$	
Delinquent	- - - - -	\$ 1,631.35	\$ 1,631.35
Total	- - - - -		\$ 10,592.82

TABULAR SCHEDULE OF VALUATIONS,
LEVIED IN THE Town OF Thunder Lake

School District No.	VALUATION BY SCHOOL DISTRICTS				RATE OF STATE TAXES				RATE OF COUNTY TAXES										RATE OF TOWN TAXES										RATE OF									
	Agri-cultural Lands	Non-Agri-cultural Lands	Personal Property	Total Value of all Property except Money and Credits	Total Rate of State Tax	Rev.	R. & B.	Welfare	Bonds and Int.	Total Rate of County Tax	Rev.	R. & B.	Drag Tax	State Loan	Total Rate of Town Tax	Local	Spe-cial	State Loan	Defi-cien-cy	Tui-tion	Trans-portion	Total Rate of all Taxes	Total Rate of all Taxes	Local 1 Mill	Special	State Loan	Total	Rate	Amounts									
C1	33243	10437	6147 5775	50069	H. 3.93	28.11	14.91	60.19	11.47	2.	106.68	7.	12.	1.	30.	1.	25.	28.5	1.5	5.5	86.5	227.11	3386	84643	96492	5079	18621	208221	20836									
Assessed Value Homestead	Rural 10332	All Other	Personal Property	Total 10332																																		
Non-Homestead Total	33348 43680		6389 6389	39137 50069																																		

RATES AND TAXES
COUNTY OF CASS, STATE OF MINNESOTA

SCHOOL TAXES										TAXES LEVIED																										
Total Rate of Sch'l Tax	Total Rate of all Taxes	LOCAL 1 MILL AND SPECIAL SCHOOL TAXES BY DISTRICTS										ALL OTHER TAXES																								
Mills	Mills	Local 1 Mill	Special	State Loan	Def. Transp.	Tuition	Transportation	C.O.	FUND'S					Rate	Amounts																					
61.5	202.11	3386	84643	96492	5079	18621		208221	State-Non-Homestead,	20836																										
86.5	227.11	1621	81060	46204	2432	8917		140234	State-Homestead,	19677																										
		5007	165703	142696	7511	27538		348455	County Revenue,	140740																										
									County Road and Bridge,	74653																										
									County Welfare,	251293																										
									Bonds and Interest	57429																										
									<u>H. & B. Sinking</u>	10014																										
										534129																										
									Town Revenue,	35048																										
									Town Road and Bridge,	60083																										
									Town Drag,	5007																										
									Town State Loan,	50069																										
									<u>Tue</u>	150207																										
									School Local 1 Mill,	5007																										
									School Special,	165703																										
									School State Loan,	142696																										
									Deficiency	7511																										
									Tuition	27538																										
									Transportation	348455																										
									<u>C. O.</u>																											

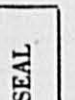
Total Taxes Real Estate 9264.06
Pers. Prop. 1468.98
Total 10,733.04

Total Number of Acres 7951.22
Total Levy, \$ 10,733.04

I, L. C. Peterson, Auditor of said County and State of Minnesota, do hereby certify that the foregoing is a true and correct Schedule, showing the valuation of all the taxable property, in the County of Thunder Lake, in said County, the several rates of Taxation and Totals of the several Tax Funds levied thereon for the year A. D. 1954.

Witness my hand and official seal, this 3d day of January, A. D. 1954.

By Allen Hillen, Deputy Auditor.



COLLECTIONS OF TAXES OF 1954

Town OF Thunder Lake, CASS COUNTY, MINNESOTA

FUNDS	MARCH SETTLEMENT 1954	JUNE SETTLEMENT 1954	NOV. SETTLEMENT 1954	Amount Collected from Nov. 1953 to First Monday in Jan. 1954	REDUCTIONS	Total Reductions and Collected	BALANCE UNCOLLECTED	ADDITIONS	Total Uncollected to First Monday in January, 1954
State-Non-Homestead,	3555	10169	3400	58					
State-Homestead,	3098	9700	3406	197					
County Revenue,	22158	69380	24360	1416					
County Road and Bridge,	11753	36800	12921	751					
County Welfare,	39562	123878	43495	2528					
County Bond and Interest,	9041	28310	9940	579					
<i>H. & G. sinking</i>	1576	4936	1733	101					
Town Revenue,	5518	17277	6066	353					
Town Road and Bridge,	9459	29618	10399	605					
Town Drag,	781	2468	867	58					
Town State Loan, <i>free</i>	7882	24682	8066	504					
School Local 1 Mill,	787	2469	866	58					
School Special,	33814	80120	24622	1261					
School State Loan,									
Deficiency	22465	70343	24699	1436					
Tuition									
Transportation	6682	3702	1300	75					
C.O.	4536	13575	4766	277					
	176974	527427	181506	10240					

	SCHOOL DISTRICT NO.	LOCAL 1 MILL	SPECIAL	STATE LOAN	Deficiency	Transport.	C. O.	TOTALS
MARCH SETTLEMENT	A-C1	223	5599		6383	336	1232	13773
	Na-C1	564	28215		16082	846	3104	48811
	Totals	787	33814		22465	1182	4336	62584
JUNE SETTLEMENT	A-C1	1732	43289		49349	2597	9524	106491
	Na-C1	737	56931		20994	1105	4051	63718
	Totals	2469	80120		70343	3702	13575	170209
NOVEMBER SETTLEMENT	A-C1	748	18710		21330	1123	4116	46027
	Na-C1	118	5912		3369	177	650	10226
	Totals	866	24622		24699	1300	4766	56253
NOVEMBER to JANUARY	A-C1	50	1261		1436	75	277	3099
	Totals	50	1261		1436	75	277	3099
	ADDITIONS							
REDUCTIONS	SCHOOL DISTRICT NO.							
	Totals							
	Totals							

Assessment Roll and Tax List of Real Property in the Town of Thunder Lake, Cass County, Minnesota, for Taxes for the Year 1954. *Indicate Type of Property: R-Residential, C-Commercial, I-Industrial, U-Utility, F-Farm

Table with columns: IN WHOSE NAME ASSESSED, TO WHOM TRANSFERRED, DESCRIPTION OF PROPERTY, TRUE AND FULL VALUATIONS, ASSESSED VALUATIONS, FINAL EQUALIZED VALUE.

Cass County, Minnesota, for Taxes for the Year 1954.

Table with columns: VALUATIONS BY SCHOOL DISTRICTS AS EQUALIZED BY DEPARTMENT OF TAXATION, Tax including State Homestead, State Tax on Non-Homestead, SPECIAL TAXES, TOTAL TAXES, PAID, WHEN PAID, Number of Receipt, March Settlement 1955, June Settlement 1955, November Settlement 1955, Collections to First Monday in January 1956, Delinquent on First Monday in January 1956, Total Delinquent Tax and Penalty, REMARKS.

Vertical text on the right edge of the page: Coolley-Trail Duck Pass - Oak Park Beaches - Oak Lawn Beach - Ray Pointe - I-6

Assessment Roll and Tax List of Real Property in the Duane of Thunder Lake,

*Indicate Type of Property: R-Residential, C-Commercial, I-Industrial, U-Utility, F-Farm

Form SCD (54) MILLER-BAYH COMPANY, MINNEAPOLIS

Table with columns for IN WHOSE NAME ASSESSED, TO WHOM TRANSFERRED, DESCRIPTION OF PROPERTY, TRUE AND FULL VALUATIONS, ASSESSED VALUATIONS, FINAL EQUALIZED VALUE.

Cass County, Minnesota, for Taxes for the Year 1954.

Table with columns for VALUATIONS BY SCHOOL DISTRICTS AS EQUALIZED BY DEPARTMENT OF TAXATION, SOLD FOR TAXES, TAXES, PAID, WHEN PAID, Number of Receipt, March Settlement 1955, June Settlement 1955, Penalty, November Settlement 1955, Penalty, Collections to First Monday in January 1956, Penalty, Delinquent on First Monday in January 1956, Total Delinquent Tax and Penalty, REMARKS.

Cooley-Trail Dick Pass - Oak Park Beaches - Oak Lawn Beach - Oak Point

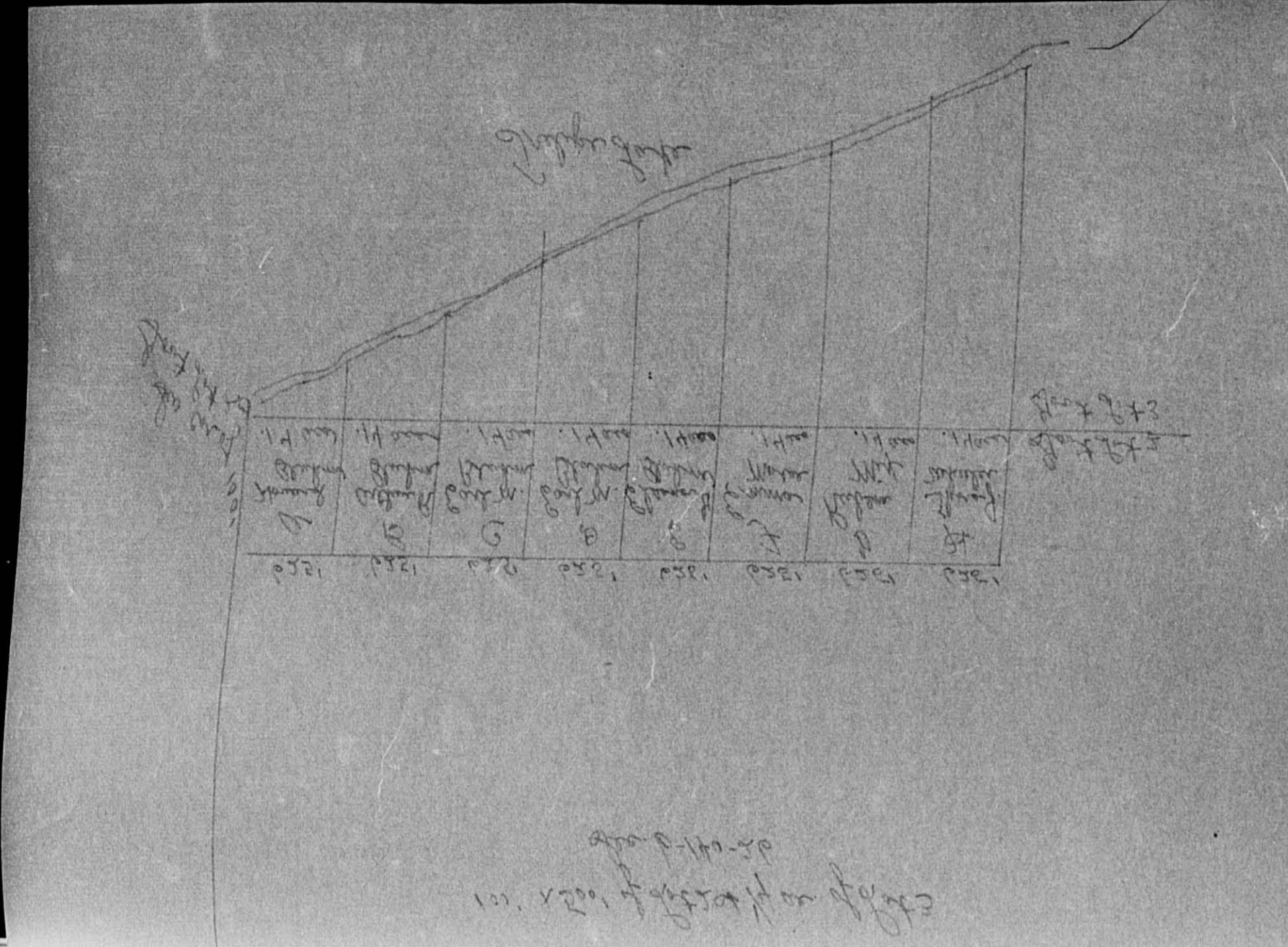
Assessment Roll and Tax List of Real Property in the Town of Downers Grove of DuSable Lake

*Indicate Type of Property: R-Residential, C-Commercial, I-Industrial, U-Utility, F-Farm

Table with columns: IN WHOSE NAME ASSESSED, TO WHOM TRANSFERRED, DESCRIPTION OF PROPERTY (Subdivision, Sec. of Lot, Town or Block, Acres), TRUE AND FULL VALUATIONS (LAND, BUILDINGS, MACHINERY, TOTAL), ASSESSED VALUATIONS (RURAL, ALL OTHER, MACHINERY, TOTAL ASSESSED), VALUATIONS BY SCHOOL DISTRICTS AS EQUALIZED BY DEPARTMENT OF TAXATION (District No., Rate, Mills), TAXES (SOLD FOR TAXES, District, Rate, Mills, State Tax, SPECIAL TAXES, TOTAL TAXES), PAID (1st/2nd Half Paid), WHEN PAID (Month Day Year), Number of Receipt, March Settlement 1955, June Settlement 1955, Penalty, November Settlement 1955, Penalty, Collections to First Monday in January 1956, Penalty, Delinquent on First Monday in January 1956, Total Delinquent Tax and Penalty, REMARKS.

Assessment Roll and Tax List of Real Property in the Town of Thunder Lake, Cass County, Minnesota, for Taxes for the Year 1954.

Table with columns for IN WHOSE NAME ASSESSED, TO WHOM TRANSFERRED, DESCRIPTION OF PROPERTY, TRUE AND FULL VALUATIONS, ASSESSED VALUATIONS, FINAL EQUALIZED VALUE, VALUATIONS BY SCHOOL DISTRICTS AS EQUALIZED BY DEPARTMENT OF TAXATION, SOLD FOR TAXES, PAID, WHEN PAID, Number of Receipt, March Settlement 1955, June Settlement 1955, Penalty, November Settlement 1955, Penalty, Collections to First Monday in January 1956, Penalty, Delinquent on First Monday in January 1956, Total Delinquent Tax and Penalty, REMARKS.



Assessment

*Indicate Type of Property: R-Residential, C-Commercial, I-Industrial, U-Utility, F-Farm

IN WHOSE NAME ASSESSED	TO WHOM TRANSFERRED	DESCRIPTION OF PROPERTY	TRUE AND FULL VALUATIONS							ASSESSED VALUATIONS				Total Assessed Value as Equalized by the Board of Review	FINAL EQUALIZED VALUE	SOLD FOR TAXES	VALUATIONS BY SCHOOL DISTRICTS AS EQUALIZED BY DEPARTMENT OF TAXATION						Taxes	PAID	WHEN PAID	Number of Receipt	March Settlement 1955	June Settlement 1955	November Settlement 1955	Collections to First Monday in January 1956	Delinquent on First Monday in January 1956	Total Delinquent Tax and Penalty	REMARKS												
			LAND	BUILDINGS	MACHINERY	TOTAL	RURAL		ALL OTHER		MACHINERY	TOTAL	District 1				District 2	District 3	District 4	District 5	District 6	State												Special	Total	Month	Day	Year	Penalty	Penalty	Penalty	Penalty	Penalty		
The Hugo Eisenack		1.05 acres of Lot 2																																											
State of Minnesota		1.11 acres of Lot 2																																											
Irvin C. & Eleanor Becker		2.6 acres of Lot 2																																											
Wilhelmina G. Bluhm		3.10 acres of Lot 2																																											
Cecil A. Bluhm		100' x 500' of Lot 2 & 1/2 acres of Lot 3 less Tracts 2 & D, C, E, F, G, H																																											
Edna M. Bluhm		Lot 2 less 9.11 acres																																											
Eleanor G. Bluhm		Tract C & D of Lots 2 & 3																																											
Hugh & Hattie Eisenack		5.65 acres of Lots 1 & 2																																											
Cecil A. Bluhm		5.15 acres less Platted																																											
Alva & Ellen Elliot		NW 1/4 of SW 1/4 Lot 6																																											
Cecil A. Bluhm		SW 1/4 of SW 1/4 Lot 7																																											
Cecil A. Bluhm		SE 1/4 of SW 1/4 in Oak Park Sub																																											
Cecil A. Bluhm		NE 1/4 of SE 1/4																																											
Cecil A. Bluhm		NW 1/4 of SE 1/4 Lot 4																																											
Cecil A. Bluhm		SW 1/4 of SE 1/4																																											
Thomas M. Music		SE 1/4 of SE 1/4 Lot 10																																											
		33176				2821		1490		3856		548		322		920				454		197		651		124 = 578.70		125 = 322		249 = 900		5656		172		18986		8305		2431		7750			

Cass County, Minnesota, for Taxes for the Year 1954.

Assessment Roll and Tax List of Real Property in the Town of Thunder Lake

*Indicate Type of Property: R-Residential, C-Commercial, I-Industrial, U-Utility, F-Farm

Cass County, Minnesota, for Taxes for the Year 1954.

Table with columns: IN WHOSE NAME ASSESSED, TO WHOM TRANSFERRED, DESCRIPTION OF PROPERTY, TRUE AND FULL VALUATIONS, ASSESSED VALUATIONS, VALUATIONS BY SCHOOL DISTRICTS AS EQUALIZED BY DEPARTMENT OF TAXATION, TAXES, PAID, WHEN PAID, Number of Receipt, March Settlement, June Settlement, Penalty, November Settlement, Penalty, Collections to First Monday in January, Delinquent on First Monday in January, Total Delinquent Tax and Penalty, REMARKS. Includes handwritten entries for various lots, acreages, and tax amounts.

Handwritten summary calculations at the bottom of the page, including 'Out - Property' and 'See Abate # 4301'.

Vertical text on the right edge of the page, possibly from a binder or adjacent page: 'Cooler-Tail Duck Pass Oak Park Beaches Oak Lawn Beach Ray Point'

Assessment Roll and Tax List of Real Property in the County of Cass, Minnesota, for the Year 1954.
 Residential, C-Commercial, I-Industrial, U-Utility, F-Farm

IN WHOSE NAME ASSESSED	TO WHOM PAID	Block 2		Block 1		Thunder Lake		Richardson		Valuations		FINAL EQUALIZED VALUE
		1	2	1	2	1	2	1	2	RURAL	ALL OTHERS	
John E. Lange												
E.C. Waterhouse												
State of Minnesota												
Frank X. Henke												
Louis C. & Anna C. Henke												
Anna C. & Louis C. Henke												

Richardson
Richardson
Richardson
Richardson

Cass County, Minnesota, for Taxes for the Year 1954.

SOLD FOR TAXES	VALUATIONS BY SCHOOL DISTRICTS AS EQUALIZED BY DEPARTMENT OF TAXATION					Tax including State Homestead	State Tax on Non-Homestead	SPECIAL TAXES	TOTAL TAXES	PAID	WHEN PAID	Number of Receipt	March Settlement 1955	June Settlement 1955	Penalty	November Settlement 1955	Penalty	Collections to First Monday in January 1956	Penalty	Delinquent on First Monday in January 1956	Total Delinquent Tax and Penalty	REMARKS	
	District No.	Rate	District No.	Rate	District No.																		Rate
	Dollars	Mills	Dollars	Mills	Dollars																		Mills
1																							
2																							
3																							
4																							
5																							
6		232				4688	122		4810			1st Half Paid MAY 31 1955									2445	2645	
7		100		#215		2022	52		2074			1st Half Paid MAY 31 1955									1037	1141	
8				170		8744	88		8832												8832	9715	
9																							
10																							
11																							
12																							
13		120				2426	62		2488			1st Half Paid OCT 1 1955	1906								1244	1244	
14				2700		61320	1410		62730			PAID IN FULL MAY 24 1955	6052								62730		
15																							
16																							
17																							
18																							
19		10				202	06		208			PAID IN FULL MAY 24 1955	6052								208		
20																							

Trail Duck Pass Oak Park Beaches
 Oak Lawn Beach
 Hay Point
 F. 6

Assessment Roll and Tax List of Real Property in the Town of Thunder Lake, Cass County, Minnesota, for Taxes for the Year 1954.

Form SCD (54) MILLER-DAY COMPANY, MINNEAPOLIS

Indicate Type of Property: R-Residential, C-Commercial, I-Industrial, U-Utility, F-Farm

IN WHOSE NAME ASSESSED	TO WHOM TRANSFERRED	CLASSIFICATION OF PROPERTY	TIME AND FULL VALUATION	VALUATIONS				FINAL EQUALIZED VALUE
				4,000 Non-Homestead %	MACHINERY Permanently Attached to Real Estate 33 1/3 %	TOTAL ASSESSED VALUE	Total Assessed Value as Equalized by the Board of Review	
George B. Steiner & Laurence M. Steiner						250.0		
C. P. Gerber								
H. & Alice C. Charland								
Gerald W. & Nancy Cot & Ethel M. Cot						99		
Charles R. & Della M. Sherwood						99		
Louise C. & Anna C. Henke						125		
Leo Albert & Melvin Parish & Vernon Sinclair & Ray Hendrickson & Ray Waller						317		
Wm. B. & Mary E. Wagner						100		
Louise A. Gates						106		
H. & Emma J. Minor						110		
W. D. & Edythe Chamberlain (each undivided 1/2 int)						230		
Ralph H. & Hazel V. Hardeen						20		
Ray B. Jones						439		
Michael & Heloise M. Grandner						414.0		

14.58 ac. now Plat # 8.5.6

1916 ass. replatted left

Cass County, Sec. 9 - 140-26 East 873

103.20

124.8

225.0

66.55

66.55

380.0

1.27 acres

2.548

0.97 acres

2.548

Sun Man

Lot 2 on Plat

Lot 1 on Plat

Duck Pond

Shed Two

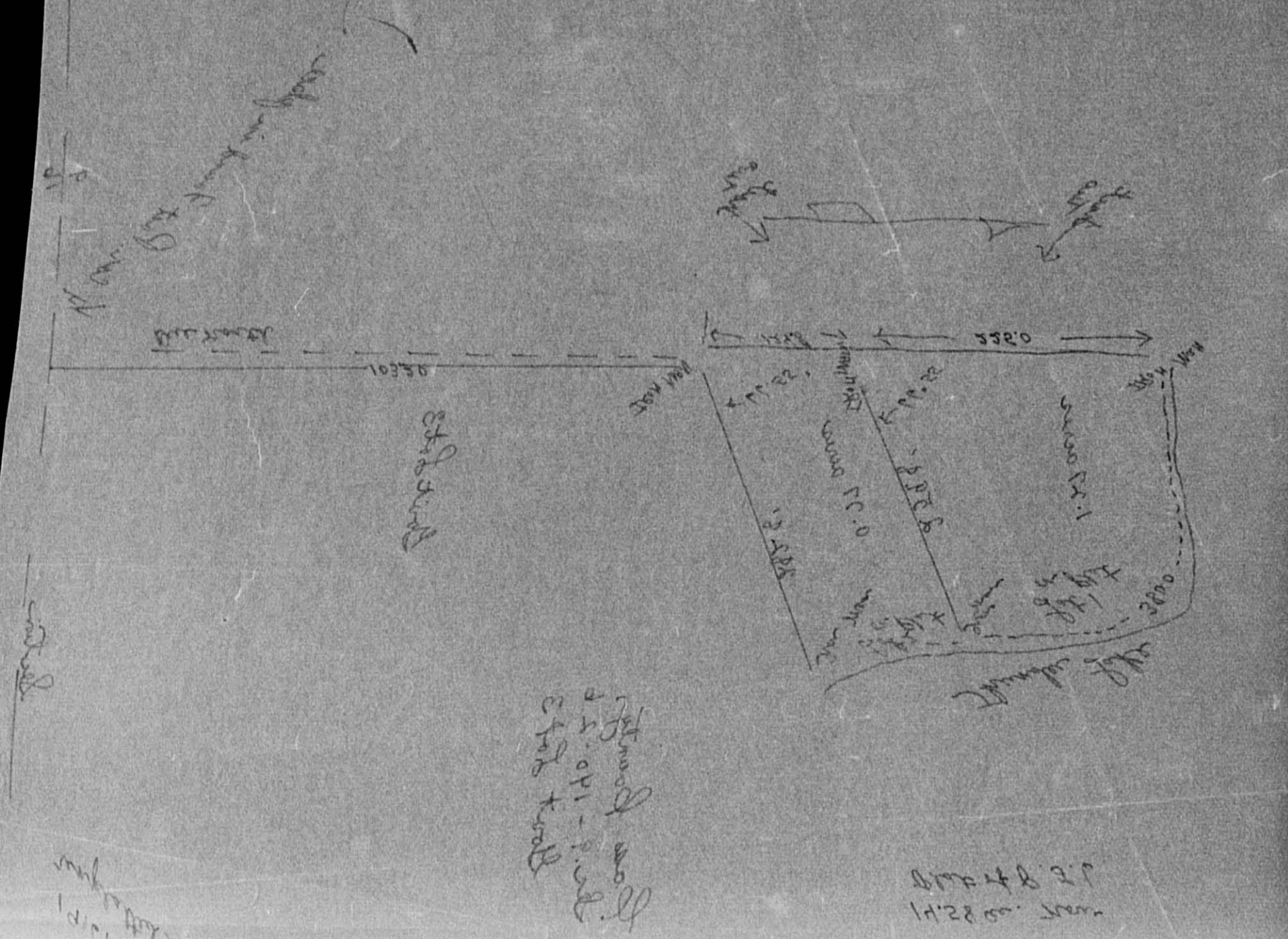
Shed One

Cass County, Minnesota, for Taxes for the Year 1954.

SOLD FOR TAXES	VALUATIONS BY SCHOOL DISTRICTS AS EQUALIZED BY DEPARTMENT OF TAXATION						Tax including State Homestead	State Tax on Non-Homestead	SPECIAL TAXES	TOTAL TAXES	PAID	WHEN PAID	Number of Receipt	March Settlement 1955	June Settlement 1955	Penalty	November Settlement 1955	Penalty	Collections to First Monday in January 1956	Penalty	Delinquent on First Monday in January 1956	Total Delinquent Tax and Penalty	REMARKS
	District No.	District No.	District No.	District No.	District No.	District No.																	
1							505.28	130.6		518.34	1st Half Paid MAY 31 1955 2nd Half Paid OCT 24 1955	4430 15015		259.17									
2																							
3																							
4																							
5																							
6							94	50		1950	PAID IN FULL MAY 31 1955	9426		19.50									
7																							
8																							
9																							
10							99	52		2052	1st Half Paid MAY 31 1955 2nd Half Paid OCT 19 1955	9425 14190		10.26									
11																							
12																							
13							125	66		2592	PAID IN FULL MAY 24 1955	6052		25.92									
14							67	36		1390	Abate #6382 PAID IN FULL MAY 31 1955	9432		13.90									51.82 Abate
15							100	52		2074	PAID IN FULL MAY 10 1955	5591		20.74									
16							106	56		2198	PAID IN FULL MAY 31 1955	9424		21.98									
17							110	58		2282	1st Half Paid MAY 31 1955 2nd Half Paid OCT 20 1955	9427 14234		11.41									
18							230	120		4768	PAID IN FULL MAR 30 1955	4728		47.68									
19							20	10		414	PAID IN FULL MAY 31 1955	9428		4.14									
20	OLD FOR TAXES						4132 307 132 4008	160		9032													
							83672	2096		85768				43470		28084							9032 + 9935 51.82 Abate

Assessment Roll and Tax List of Real Property in the Town of Shunder Lake, Cass County, Minnesota, for Taxes for the Year 1954.

Table with columns: IN WHOSE NAME ASSESSED, TO WHOM TRANSFERRED, DESCRIPTION OF PROPERTY, TRUE AND FULL VALUATIONS, ASSESSED VALUATIONS, TOTAL ASSESSED VALUE, FINAL EQUALIZED VALUE.



Cass County, Minnesota, for Taxes for the Year 1954.

Table with columns: VALUATIONS BY SCHOOL DISTRICTS AS EQUALIZED BY DEPARTMENT OF TAXATION, TAXES, PAID, WHEN PAID, Number of Receipt, March Settlement, June Settlement, November Settlement, Collections to First Monday in January, Delinquent on First Monday in January, Total Delinquent Tax and Penalty, REMARKS.

Assessment Roll and Tax List of Real Property in the Town of Thunder Lake

*Indicate Type of Property: R-Residential, C-Commercial, I-Industrial, U-Utility, F-Farm

Form 502 (5-51) WALKER-BRYAN COMPANY, MINNEAPOLIS

Table with columns: IN WHOSE NAME ASSESSED, TO WHOM TRANSFERRED, DESCRIPTION OF PROPERTY, TRUE AND FULL VALUATIONS, ASSESSED VALUATIONS, FINAL EQUALIZED VALUE. Includes handwritten entries for various lots and descriptions.

Cass County, Minnesota, for Taxes for the Year 1954.

Table with columns: VALUATIONS BY SCHOOL DISTRICTS AS EQUALIZED BY DEPARTMENT OF TAXATION, TAXES, PAID, WHEN PAID, Number of Receipt, March Settlement 1955, June Settlement 1955, November Settlement 1955, Collections to First Monday in January 1956, Delinquent on First Monday in January 1956, Total Delinquent Tax and Penalty, REMARKS. Includes handwritten tax amounts and payment dates.

Assessment Roll and Tax List of Real Property in the Town of Thunder Lake, Minnesota

Form 50D (54) MILLER-DAY COMPANY, MINNEAPOLIS

*Indicate Type of Property: R-Residential, C-Commercial, I-Industrial, U-Utility, F-Farm

Table with columns: IN WHOSE NAME ASSESSED, TO WHOM TRANSFERRED, DESCRIPTION OF PROPERTY, TRUE AND FULL VALUATIONS, ASSESSED VALUATIONS, and FINAL EQUALIZED VALUE.

Cass County, Minnesota, for Taxes for the Year 1954.

Table with columns: VALUATIONS BY SCHOOL DISTRICTS AS EQUALIZED BY DEPARTMENT OF TAXATION, TAX INCLUDING STATE HOMESTEAD, SPECIAL TAXES, TOTAL TAXES, PAID, WHEN PAID, Number of Receipt, March Settlement 1955, June Settlement 1955, Penalty, November Settlement 1955, Penalty, Collections to First Monday in January 1956, Penalty, Delinquent on First Monday in January 1956, Total Delinquent Tax and Penalty, REMARKS.

Assessment Roll and Tax List of Real Property in the Town of Thunder Lake, Cass County, Minnesota, for Taxes for the Year 1954.

Table with columns: IN WHOSE NAME ASSESSED, TO WHOM TRANSFERRED, DESCRIPTION OF PROPERTY, TRUE AND FULL VALUATIONS, ASSESSED VALUATIONS, VALUATIONS BY SCHOOL DISTRICTS AS EQUALIZED BY DEPARTMENT OF TAXATION, TAXES, PAID, WHEN PAID, Number of Receipt, March Settlement 1955, June Settlement 1955, Penalty, November Settlement 1955, Collections to First Monday in January 1956, Delinquent on First Monday in January 1956, Total Delinquent Tax and Penalty, REMARKS.

Robert J. & Elvera G. Halverson

S 100' of N 877.7' of Lot 4 151/2026

Gladys M. Schutz et al

Lot 3 line N. 350'

Leslie D. & Juanita M. Tenspor

71.144.5' of Lot 5

Clifford H. & Hazel C. Thomas

Lot 4 line S. 200' of N. 297.7' line

C. M. Miles

71.130' of S. 660' of Lot 5

Richard J. Cecka

S. 100' of N. 297.7' of Lot 4

Gordon W. Gieske

71.200' of Lot 3

Alfred M. & Kathryn H. Andersen

S 100' of N 397.7' of Lot 7 151/2026

Rallin H. Schultz

71.350' of Lot 3 line N. 200'

John T. & Ina M. Krupinski

71.200' of S. 400' of Lot 4

Sidney T. & Pauline E. Hagen

S 100' of N. 497.7' of Lot 4

John & Josephine Wyttenbach

S. 100' of N. 697.7' of Lot 4

Harry L. Woodruff

71.97.7' of Lot 4

John F. & Minnie H. McCluskey

S 100' of N. 797.7' of Lot 4

107 50 1742 4007 5250 265 1475 1740

265 1475 1740 35166 768 35934

7220 23258 4212 1244

Assessment Roll and Tax List of Real Property in the Town of Thunder Lake

*Indicate Type of Property: R-Residential, C-Commercial, I-Industrial, U-Utility, F-Farm

Table with columns: IN WHOSE NAME ASSESSED, TO WHOM TRANSFERRED, DESCRIPTION OF PROPERTY, TRUE AND FULL VALUATIONS, ASSESSED VALUATIONS, FINAL EQUALIZED VALUE.

Cass County, Minnesota, for Taxes for the Year 1954.

Table with columns: VALUATIONS BY SCHOOL DISTRICTS AS EQUALIZED BY DEPARTMENT OF TAXATION, TAXES, PAID, WHEN PAID, Number of Receipt, March Settlement 1955, June Settlement 1955, Penalty, November Settlement 1955, Penalty, Collections to First Monday in January 1956, Delinquent on First Monday in January 1956, Total Delinquent Tax and Penalty, REMARKS.

Assessment Roll and Tax List of Real Property in the Town of Shuader Lake,
 of Shuader Lake,
 *Indicate Type of Property: R-Residential, C-Commercial, I-Industrial, U-Utility, F-Farm

Form SCD (54) WILHELM-SAYRE COMPANY, MINNEAPOLIS

IN WHOSE NAME ASSESSED	TO WHOM TRANSFERRED	DESCRIPTION OF PROPERTY		TRUE AND FULL VALUATIONS										FINAL EQUALIZED VALUE									
		SUBDIVISION	Sec. of Lot	Town or Block	Rug	Number of Acres of Land Acres 100ths	No. School District	Indicate Home-estead Yes or No	Indicate Agricultural Yes or No	Indicate Type of Property	LAND Exclusive of Structures and Improvements		BUILDINGS and Other Structures		MACHINERY Permanently Attached to Real Estate	TOTAL True and Full Value	RURAL		ALL OTHER		MACHINERY Permanently Attached to Real Estate	TOTAL ASSESSED VALUE	Total Assessed Value as Equalized by the Board of Review
											Dollars	Dollars	Dollars		Dollars	Dollars	Dollars	Over \$4,000 and Non-Homestead		Dollars	Dollars	Dollars	Dollars
																		Homestead Up to \$4,000 20%	Over \$4,000 and Non-Homestead 33 1/3%				
Henry Sobason		NE 1/4 of NE 1/4	18	140	26	40	C-1		T	180			480		60	160	60	480		60			
"	"	NW 1/4 of NE 1/4				40	"	"	T	180			480		60	160	60	480		60			
Walter Katherine Andrews Harold & Mabel Meyers U. S. of America	U. S. of America	SW 1/4 of NE 1/4				40	"	"	T	180			480		60	160	60	480		60			
						40	"	"	T	180			480		60	160	60	480		60			
Chas. A. Cavanaugh		NE 1/4 of NW 1/4				40	"	"	R	390	162		552		184			184		184			
Meyers & Andrews		NW 1/4 of NW 1/4 Lot 1				3547	"	"	T	300			300		100			100		100			
"	"	SW 1/4 of NW 1/4 Lot 2				3602	"	"	T	360			360		120			120		120			
Chas. A. Cavanaugh		SE 1/4 of NW 1/4				40	"	"	T	480			480		160			160		160			
						40	"	"	T	480			480		160			160		160			
State of Minnesota		NE 1/4 of SW 1/4																					
State of Minnesota		NW 1/4 of SW 1/4 Lot 3																					
State of Minnesota		SW 1/4 of SW 1/4 Lot 4																					
State of Minnesota		SE 1/4 of SW 1/4																					
Walter Katherine Andrews & Harold & Mabel Meyers U. S. of America	U. S. of America	NE 1/4 of SE 1/4				40	"	"	T	162			162		54			54		54	out - forestry		
State of Minnesota		NW 1/4 of SE 1/4																					
Walter Katherine Andrews & Harold & Mabel Meyers U. S. of America	U. S. of America	SW 1/4 of SE 1/4				40	"	"	T	162			162		54			54		54	out - forestry		
"	U. S. of America	SE 1/4 of SE 1/4				40	"	"	T	162			162		54			54		54	" - "		

431 49
 Out. Forestry
 2736
 600
 2136
 162
 2898
 - 666
 2232
 2232
 966
 222
 744

Cass County, Minnesota, for Taxes for the Year 1954.

SOLD FOR TAXES	VALUATIONS BY SCHOOL DISTRICTS AS EQUALIZED BY DEPARTMENT OF TAXATION						Tax including State Homestead	State Tax on Non-Homestead	SPECIAL TAXES	TOTAL TAXES	PAID	WHEN PAID	Number of Receipt	March Settlement 1955	June Settlement 1955	Penalty	November Settlement 1955	Penalty	Collections to First Monday in January 1956	Penalty	Delinquent on First Monday in January 1956	Total Delinquent Tax and Penalty	REMARKS
	District No.	District No.	District No.	District No.	District No.	District No.																	
	Rate	Rate	Rate	Rate	Rate	Rate																	
	Mills	Mills	Mills	Mills	Mills	Mills																	
1						60	5.22		1244		1212	32										2nd Half Paid OCT 29 1955 1st Half Paid MAY 28 1955	
2						60	5.22		1244		1212	32										2nd Half Paid OCT 29 1955 1st Half Paid MAY 28 1955	
3						60	5.22		1244		1212	32										2nd Half Paid OCT 29 1955 1st Half Paid MAY 28 1955	
4																							
5																							
6						184	5.22		3814		3718	96										PAID IN FULL MAY 31 1955 9457	
7									2074		2022	52											2074
8									2488		2426	62											2488
9						160	5.22		3318		3234	84										PAID IN FULL MAY 31 1955 9457	
10																							
11																							
12																							
13																							
14																							
15																							
16																							
17																							
18																							
19																							
20																							

744
 15036 390
 15426
 9999
 1866
 4562

Coolley-Trail Duck Pass
 Oak Park Beaches
 Oak Lawn Beach
 Ray Point

Assessment Roll and Tax List of Real Property in the Town of Thunder Lake, Cass County, Minnesota, for Taxes for the Year 1954.

Table with columns: IN WHOSE NAME ASSESSED, TO WHOM TRANSFERRED, DESCRIPTION OF PROPERTY, TRUE AND FULL VALUATIONS, ASSESSED VALUATIONS, and FINAL EQUALIZED VALUE. Includes handwritten entries for various land parcels and their owners.

Handwritten summary calculations at the bottom of the page, including totals for assessed values and equalized values.

Cass County, Minnesota, for Taxes for the Year 1954.

Table with columns: VALUATIONS BY SCHOOL DISTRICTS AS EQUALIZED BY DEPARTMENT OF TAXATION, TAXES (SPECIAL, TOTAL), PAID, WHEN PAID, and REMARKS. Includes handwritten tax amounts and payment dates.

Vertical text on the right edge of the page: Cooley-Trail Dick Pass, Oak Park Beaches, Oak Lawn Beach, and Oak Point.

Assessment Roll and Tax List of Real Property in the Town of Thunder Lake,

*Indicate Type of Property: R-Residential, C-Commercial, I-Industrial, U-Utility, F-Farm

IN WHOSE NAME ASSESSED	TO WHOM TRANSFERRED	DESCRIPTION OF PROPERTY				No. School District	Indicate Homestead Yes or No	Indicate Agricultural Yes or No	* Indicate Type of Property	TRUE AND FULL VALUATIONS				ASSESSED VALUATIONS					FINAL EQUALIZED VALUE			
		SUBDIVISION	Sec. or Lot	Town or Block	Rng					Number of Acres of Land	LAND Exclusive of Structures and Improvements	BUILDINGS and Other Structures	MACHINERY Permanently Attached to Real Estate	TOTAL True and Full Value	RURAL		ALL OTHER			MACHINERY Permanently Attached to Real Estate	TOTAL ASSESSED VALUE	Total Assessed Value as Equalized by the Board of Review
															Acres	100ths	Homestead Up to \$4,000 20%	Over \$4,000 and Non-Homestead 33 1/8%				
State of Minnesota		1	NE 1/4 of NE 1/4		20 140 26			C-1														
State of Minnesota		2	NW 1/4 of NE 1/4																			
State of Minnesota		3	SW 1/4 of NE 1/4																			
State of Minnesota		4	SE 1/4 of NE 1/4																			
		5																				
State of Minnesota		6	NE 1/4 of NW 1/4																			
State of Minnesota		7	NW 1/4 of NW 1/4																			
State of Minnesota		8	SW 1/4 of NW 1/4																			
State of Minnesota		9	SE 1/4 of NW 1/4																			
		10																				
State of Minnesota		11	NE 1/4 of SW 1/4																			
State of Minnesota		12	NW 1/4 of SW 1/4																			
State of Minnesota		13	SW 1/4 of SW 1/4																			
State of Minnesota		14	SE 1/4 of SW 1/4																			
		15																				
State of Minnesota		16	NE 1/4 of SE 1/4																			
State of Minnesota		17	NW 1/4 of SE 1/4																			
State of Minnesota		18	SW 1/4 of SE 1/4																			
State of Minnesota		19	SE 1/4 of SE 1/4																			
		20																				

Cass County, Minnesota, for Taxes for the Year 1954.

SOLD FOR TAXES	VALUATIONS BY SCHOOL DISTRICTS AS EQUALIZED BY DEPARTMENT OF TAXATION						Tax including State Homestead	State Tax on Non-Homestead	SPECIAL TAXES	TOTAL TAXES	PAID	WHEN PAID	Number of Receipt	March Settlement 1955	June Settlement 1955	Penalty	November Settlement 1955	Penalty	Collections to First Monday in January 1956	Penalty	Delinquent on First Monday in January 1956	Total Delinquent Tax and Penalty	REMARKS
	District No.	District No.	District No.	District No.	District No.	District No.																	
	Rate	Rate	Rate	Rate	Rate	Rate																	
1																							
2																							
3																							
4																							
5																							
6																							
7																							
8																							
9																							
10																							
11																							
12																							
13																							
14																							
15																							
16																							
17																							
18																							
19																							
20																							

Cooley-Traill Duck Pass Oak Park Beaches Oak Lawn Beach Oak Lawn Point

Assessment Roll and Tax List of Real Property in the Town of Thunder Lake, Cass County, Minnesota, for Taxes for the Year 1954.

Table with columns for IN WHOSE NAME ASSESSED, TO WHOM TRANSFERRED, DESCRIPTION OF PROPERTY, TRUE AND FULL VALUATIONS, ASSESSED VALUATIONS, and FINAL EQUALIZED VALUE. Includes handwritten entries for property owners like Joseph S. Seaman and Marie Regwart Hand.

Cass County, Minnesota, for Taxes for the Year 1954.

Table with columns for SOLD FOR TAXES, VALUATIONS BY SCHOOL DISTRICTS AS EQUALIZED BY DEPARTMENT OF TAXATION, SPECIAL TAXES, TOTAL TAXES, PAID, WHEN PAID, Number of Receipt, March Settlement 1955, June Settlement 1955, Penalty, November Settlement 1955, Penalty, Collections to First Monday in January 1956, Penalty, Delinquent on First Monday in January 1956, Total Delinquent Tax and Penalty, and REMARKS. Includes handwritten notes on tax amounts and payment dates.

Vertical text on the right edge of the page, including "Cooley-Trail Duck Pass" and "Oak Park Beaches".

Assessment Roll and Tax List of Real Property in the Town of Thunder Lake, Cass County, Minnesota, for Taxes for the Year 1954.

Table with columns: IN WHOSE NAME ASSESSED, TO WHOM TRANSFERRED, DESCRIPTION OF PROPERTY, TRUE AND FULL VALUATIONS, ASSESSED VALUATIONS, and FINAL EQUALIZED VALUE. Includes handwritten entries for Robert J. Harris, George Bluhm, John H. + Charlotte Larson, Maurice E. + Adeline F. Conger, Howard + Audrey M. Coombe, John H. + Charlotte Larson, Cecil O. + Joan Lahn, Robert C. + Sherry K. Pond, Raymond + Barbara, Geo. H. + Josephine Bluhm, Clifford H. Thomas, Martin Hans, Edward P. + Katherine M. Abendroth, Harold G. Hagman, State of Minnesota, Philip W. + Hannah M. Perleton, State of Minnesota, and Harry Paddock.

Cass County, Minnesota, for Taxes for the Year 1954.

Table with columns: SOLD FOR TAXES, VALUATIONS BY SCHOOL DISTRICTS AS EQUALIZED BY DEPARTMENT OF TAXATION, Tax including State Homestead, SPECIAL TAXES, TOTAL TAXES, PAID, WHEN PAID, Number of Receipt, March Settlement 1955, June Settlement 1955, Penalty, November Settlement 1955, Penalty, Collections to First Monday in January 1956, Penalty, Delinquent on First Monday in January 1956, Total Delinquent Tax and Penalty, and REMARKS. Includes handwritten entries for Abate #6572, Abate #192/337, Abate #108/114, Abate #14, Abate #300 = 556, Abate #451 = 1827, Abate #751 = 2378, Abate #10.98, Abate #10.98, Abate #10.98.

Assessment Roll and Tax List of Real Property in the Town of Thunder Lake

*Indicate Type of Property: R-Residential, C-Commercial, I-Industrial, U-Utility, F-Farm

Form SCD (54) MILLER-DAVIS COMPANY, MINNEAPOLIS

Table with columns: IN WHOSE NAME ASSESSED, TO WHOM TRANSFERRED, DESCRIPTION OF PROPERTY, TRUE AND FULL VALUATIONS, ASSESSED VALUATIONS, FINAL EQUALIZED VALUE.

Robert C. Raymond, L. J. T. J. Pond, Henry J. & Agnes E. Wesche, Thos. F. Frid

David M. & Mabel L. Feldkner, Albert J. & Anne Zacker, Clifford W. & Hazelle C. Thomas

Wm. A. & Thos. E. Horner

Summary row with totals: 2376, 635, 1232, 1867, 125, 414, 539

Cass County, Minnesota, for Taxes for the Year 1954.

Table with columns: VALUATIONS BY SCHOOL DISTRICTS AS EQUALIZED BY DEPARTMENT OF TAXATION, SOLD FOR TAXES, PAID, WHEN PAID, Number of Receipt, March Settlement 1955, June Settlement 1955, November Settlement 1955, Collections to First Monday in January 1956, Delinquent on First Monday in January 1956, Total Delinquent Tax and Penalty, REMARKS.

Handwritten entries in the tax table including 'PAID IN FULL', 'MAY 31 1955', 'SEP 1 1955', 'OCT 31 1955'.

Summary row for taxes: 414, 125, 539, 2838, 8366, 218, 11422, 2838, 7232, 1352

Vertical text on the right edge: Coolley-Trail Dock Pass, Oak Park Beaches, Oak Lawn Beach, Ray Point

Assessment Roll and Tax List of Real Property in the Town of Thunder Lake, Cass County, Minnesota, for Taxes for the Year 1954.

Table with columns: IN WHOSE NAME ASSESSED, TO WHOM TRANSFERRED, DESCRIPTION OF PROPERTY, TRUE AND FULL VALUATIONS, ASSESSED VALUATIONS, VALUATIONS BY SCHOOL DISTRICTS AS EQUALIZED BY DEPARTMENT OF TAXATION, TAXES, PAID, WHEN PAID, Number of Receipt, March Settlement, June Settlement, November Settlement, Collections to First Monday in January, Delinquent on First Monday in January, Total Delinquent Tax and Penalty, REMARKS.

Jena Mining Co.

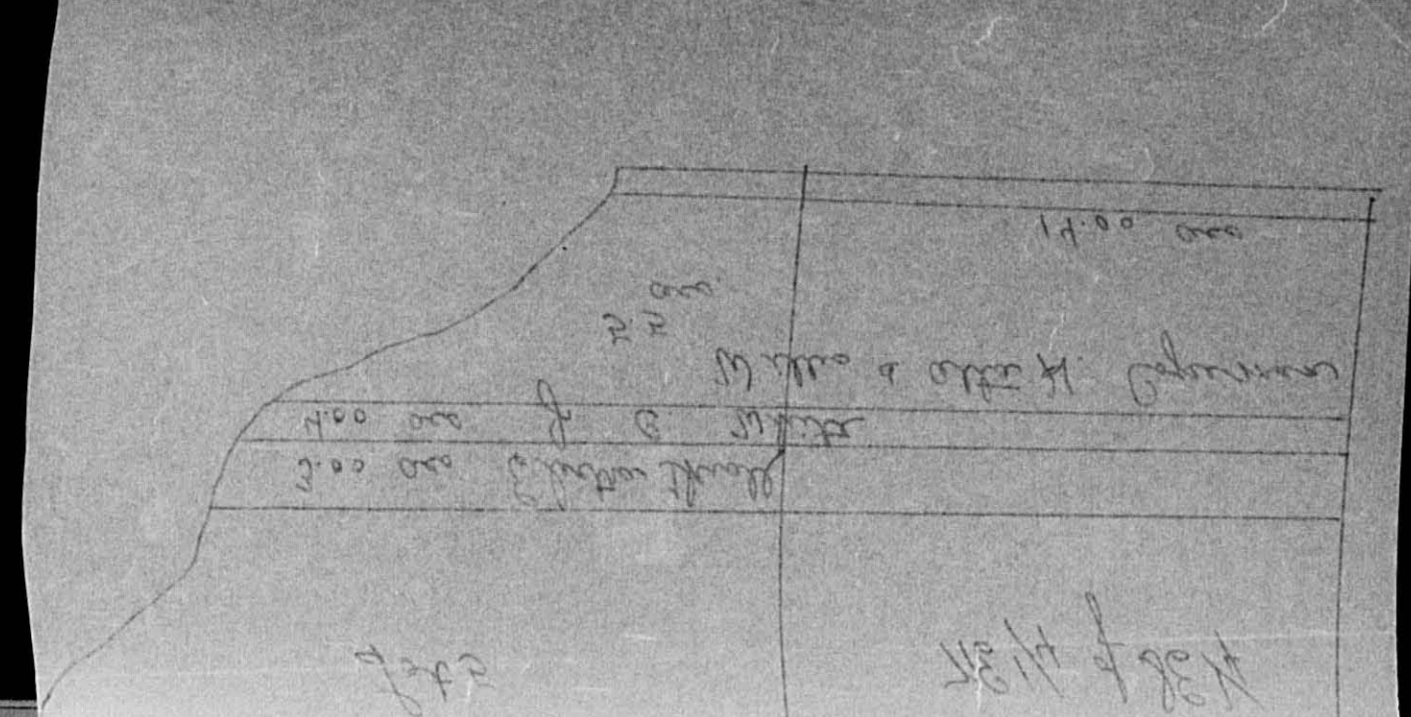
2nd Half Paid OCT 31 1955
1st Half Paid MAY 31 1955
2nd Half Paid OCT 31 1955
1st Half Paid MAY 31 1955
2nd Half Paid OCT 31 1955
1st Half Paid MAY 31 1955

4092 4082

Gooley-Frall Duck Pass
Oak Park Beaches
Oak Lawn Beach
Ray Point

Assessment Roll and Tax List of real property in the town of *Humble Lake*, of *Humble Lake*, Minnesota.

Table with columns: IN WHOSE NAME ASSESSED, TO WHOM TRANSFERRED, DESCRIPTION OF PROPERTY, TRUE AND FULL VALUATIONS, ASSESSED VALUATIONS, TOTAL ASSESSED VALUE, FINAL EQUALIZED VALUE.



Cass County, Minnesota, for Taxes for the Year 1954.

Table with columns: SOLD FOR TAXES, VALUATIONS BY SCHOOL DISTRICTS AS EQUALIZED BY DEPARTMENT OF TAXATION, Tax including State Homestead, State Tax on Non-Homestead, SPECIAL TAXES, TOTAL TAXES, PAID, WHEN PAID, Number of Receipt, March Settlement 1955, June Settlement 1955, November Settlement 1955, Collections to First Monday in January 1956, Delinquent on First Monday in January 1956, Total Delinquent Tax and Penalty, REMARKS.

Assessment Roll and Tax List of Real Property in the Town of Thunder Lake

*Indicate Type of Property: R-Residential, C-Commercial, I-Industrial, U-Utility, F-Farm

Table with columns: IN WHOSE NAME ASSESSED, TO WHOM TRANSFERRED, DESCRIPTION OF PROPERTY, TRUE AND FULL VALUATIONS, ASSESSED VALUATIONS, FINAL EQUALIZED VALUE.

Table with columns: VALUATIONS BY SCHOOL DISTRICTS AS EQUALIZED BY DEPARTMENT OF TAXATION, Tax including State Homestead, SPECIAL TAXES, TOTAL TAXES, PAID, WHEN PAID, Number of Receipt, March Settlement 1955, June Settlement 1955, November Settlement 1955, Collections to First Monday in January 1956, Delinquent on First Monday in January 1956, Total Delinquent Tax and Penalty, REMARKS.

Assessment Roll and Tax List of Real Property in the Town of Thunder Lake

*Indicate Type of Property: R-Residential, C-Commercial, I-Industrial, U-Utility, F-Farm

Form 501 (54) - WALKER-BATH COMPANY, MINNEAPOLIS

Table with columns: IN WHOSE NAME ASSESSED, TO WHOM TRANSFERRED, SUBDIVISION, TRUE AND FULL VALUATIONS, ASSESSED VALUATIONS, FINAL EQUALIZED VALUE. Includes handwritten entries for Joseph B. James Thompson Lumber Co.

Cass County, Minnesota, for Taxes for the Year 1954.

Table with columns: VALUATIONS BY SCHOOL DISTRICTS AS EQUALIZED BY DEPARTMENT OF TAXATION, TAXES, PAID, WHEN PAID, Number of Receipt, March Settlement 1955, June Settlement 1955, November Settlement 1955, Collections to First Monday in January 1956, Delinquent on First Monday in January 1956, Total Delinquent Tax and Penalty, REMARKS. Includes handwritten entries for tax payments.

Assessment Roll and Tax List of Real Property in the Town of Shuanda Lake

*Indicate Type of Property: R-Residential, C-Commercial, I-Industrial, U-Utility, F-Farm

Cass County, Minnesota, for Taxes for the Year 1954.

Table with columns: IN WHOSE NAME ASSESSED, TO WHOM TRANSFERRED, DESCRIPTION OF PROPERTY, TRUE AND FULL VALUATIONS, ASSESSED VALUATIONS, VALUATIONS BY SCHOOL DISTRICTS AS EQUALIZED BY DEPARTMENT OF TAXATION, TAX INCLUDING STATE HOMESTEAD, SPECIAL TAXES, TOTAL TAXES, PAID, WHEN PAID, Number of Receipt, March Settlement 1955, June Settlement 1955, Penalty, November Settlement 1955, Penalty, Collections to First Monday in January 1956, Penalty, Delinquent on First Monday in January 1956, Total Delinquent Tax and Penalty, REMARKS.

Assessment Roll and Tax List of Real Property in the Town of Thunder Lake,
*Indicate Type of Property: R-Residential, C-Commercial, I-Industrial, U-Utility, F-Farm

Form SCD (51) MILLER-BAYNE COMPANY, MINNEAPOLIS

IN WHOSE NAME ASSESSED	TO WHOM TRANSFERRED	DESCRIPTION OF PROPERTY					TRUE AND FULL VALUATIONS		ASSESSED VALUATIONS						FINAL EQUALIZED VALUE							
		SUBDIVISION	Sec. of Lot	Town or Block	Rug	Number of Acres of Land	No. School District	Indicate Home-stead Tax or No	Indicate Agri-cultural Tax or No	Indicate Type of Property	RURAL		ALL OTHER			MACHINERY Permanently Attached to Real Estate	TOTAL ASSESSED VALUE	Total Assessed Value as Equalized by the Board of Review				
											LAND Exclusive of Structures and Improvements	BUILDINGS and Other Structures	MACHINERY Permanently Attached to Real Estate	TOTAL True and Full Value					Homestead	Over \$4,000	Homestead	Over \$4,000
																			Up to \$4,000 20%	and Non-Homestead 33 1/3%	Up to \$4,000 25%	and Non-Homestead 40%
State of Minnesota		1	NE 1/4 of NE 1/4	33 140 26		e-1																
State of Minnesota		2	NW 1/4 of NE 1/4																			
State of Minnesota		3	SW 1/4 of NE 1/4																			
State of Minnesota		4	SE 1/4 of NE 1/4																			
		5																				
State of Minnesota		6	NE 1/4 of NW 1/4																			
State of Minnesota		7	NW 1/4 of NW 1/4																			
State of Minnesota		8	SW 1/4 of NW 1/4																			
State of Minnesota		9	SE 1/4 of NW 1/4																			
		10																				
State of Minnesota		11	NE 1/4 of SW 1/4																			
State of Minnesota		12	NW 1/4 of SW 1/4																			
State of Minnesota		13	SW 1/4 of SW 1/4																			
State of Minnesota		14	SE 1/4 of SW 1/4																			
		15																				
State of Minnesota		16	NE 1/4 of SE 1/4																			
State of Minnesota		17	NW 1/4 of SE 1/4																			
State of Minnesota		18	SW 1/4 of SE 1/4																			
State of Minnesota		19	SE 1/4 of SE 1/4																			
		20																				

Cass County, Minnesota, for Taxes for the Year 1954.

SOLD FOR TAXES	VALUATIONS BY SCHOOL DISTRICTS AS EQUALIZED BY DEPARTMENT OF TAXATION						Tax including State Homestead Mills	State Tax on Non-Homestead Mills	SPECIAL TAXES	TOTAL TAXES	PAID	WHEN PAID	Number of Receipt	March Settlement 1955	June Settlement 1955	Penalty	November Settlement 1955	Penalty	Collections to First Monday in January 1956	Penalty	Delinquent on First Monday in January 1956	Total Delinquent Tax and Penalty	REMARKS			
	District No. Rate	District No. Rate	District No. Rate	District No. Rate	District No. Rate	District No. Rate																				
 Mills Mills Mills Mills Mills Mills																				
	Dollars	Dollars	Dollars	Dollars	Dollars	Dollars																				
1																										
2																										
3																										
4																										
5																										
6																										
7																										
8																										
9																										
10																										
11																										
12																										
13																										
14																										
15																										
16																										
17																										
18																										
19																										
20																										

Coolley-Trail Dick Pass Oak Park Beaches Oak Lawn Beach Oak Park Point

Assessment Roll and Tax List of Real Property in the Town of Thunder Lake

*Indicate Type of Property: R-Residential, C-Commercial, I-Industrial, U-Utility, F-Farm

Cass County, Minnesota, for Taxes for the Year 1954.

IN WHOSE NAME ASSESSED	TO WHOM TRANSFERRED	DESCRIPTION OF PROPERTY					No. School District	Indicate Homestead Yes or No	Indicate Aged Yes or No	Indicate Type of Property	TRUE AND FULL VALUATIONS			ASSESSED VALUATIONS					FINAL EQUALIZED VALUE	SOLD FOR TAXES	VALUATIONS BY SCHOOL DISTRICTS AS EQUALIZED BY DEPARTMENT OF TAXATION						Tax including State Homestead	State Tax on Non-Homestead	SPECIAL TAXES	TOTAL TAXES	PAID	WHEN PAID	Number of Receipt	March Settlement 1955	June Settlement 1955	Penalty	November Settlement 1955	Penalty	Collections to First Monday in January 1956	Penalty	Delinquent on First Monday in January 1956	Total Delinquent Tax and Penalty	REMARKS			
		Subdivision	Sec. or Lot	Town or Block	Rng	Number of Acres of Land					LAND Exclusive of Structures and Improvements	BUILDINGS and Other Structures	MACHINERY Permanently Attached to Real Estate	TOTAL True and Full Value	RURAL		ALL OTHER				MACHINERY Permanently Attached to Real Estate	TOTAL ASSESSED VALUE	Total Assessed Value as Equalized by the Board of Review	District No.	District Rate	District No.																		District Rate	District No.	District Rate
															Homestead Up to \$4,000	Over \$4,000 and Non-Homestead	Homestead Up to \$4,000	Over \$4,000 and Non-Homestead																												
Daisy S. Coffey					40.10				L	480			480	160										160	3234	84	3318	1	PAID IN FULL APR 15 1955			3318														
" "					24.50				L	220	80		300	100										100	2022	52	2074	2	PAID IN FULL APR 15 1955	4912		2074														
" "					40				L	351			351	117										117	2364	62	2426	3	PAID IN FULL APR 15 1955			2426														
Clifford C. & Dean Smith					40				R	210	111		321	107										107	2162	56	2218	4										2218								
S. J. & Florence Sheppard					24.89				R	270	420		690	138										138	2790		2790	6	PAID IN FULL MAY 23 1955 2nd Half Paid OCT 31 1955	5851 15616		2790														
John R. & James A. Pulte					33.24				R	495	222		717	239										239	4830	124	4954	7	1st Half Paid MAY 31 1955	4481		2477	2477													
State of Minnesota																																														
State of Minnesota																																														
Daisy S. Coffey					318				L	90			90	30										30	606	16	622	10	PAID IN FULL APR 15 1955	4912		622														
State of Minnesota																																														
State of Minnesota																																														
State of Minnesota																																														
State of Minnesota																																														
Franklin M. Diederich					40				R	375	880		1255	251										251	5072		5072	16	Part Paid MAY 31 1955 Balance Paid OCT 17 1955	9484		3000	2840													
" "					40				T	190			190	38										38	768		768	17	Part Paid MAY 31 1955 Balance Paid OCT 17 1955	14366																
Emmett Todd					40				T	320			320	64										64	1294		1294	18	PAID IN FULL MAY 31 1955	9482		1294														
Gordon Hallberg					40				F	305	720		1025	205										205	4144		4144	19	Part Paid MAY 31 1955 Balance Paid OCT 31 1955	9483		2100	2044													
Pauline & Walter Ruff					218				L	65	220		285	95										95	1920	50	1970	20	PAID IN FULL AUG 4 1955	9724		1970	49													
					36809					2371	2653		6024	696	548									1544	31206	444	31650				20101	9331								2218						

Cooley-Trail Dick Pass Oak Park Beaches Oak Lawn Beach Oak Ray Point

Assessment Roll and Tax List of Real Property in the Town of Thunder Lake

Cass County, Minnesota, for Taxes for the Year 1954.

*Indicate Type of Property: R-Residential, C-Commercial, I-Industrial, U-Utility, F-Farm

IN WHOSE NAME ASSESSED	TO WHOM TRANSFERRED	DESCRIPTION OF PROPERTY				No. School District		* Indicate Type of Property	TRUE AND FULL VALUATIONS				ASSESSED VALUATIONS					FINAL EQUALIZED VALUE	SOLD FOR TAXES	VALUATIONS BY SCHOOL DISTRICTS AS EQUALIZED BY DEPARTMENT OF TAXATION						SPECIAL TAXES	TOTAL TAXES	PAID	WHEN PAID	Number of Receipt	March Settlement 1955	June Settlement 1955	Penalty 1955	November Settlement 1955	Penalty 1955	Collections to First Monday in January 1956	Penalty	Delinquent on First Monday in January 1956	Total Delinquent Tax and Penalty	REMARKS
		Subdivision	Sec. or Lot	Town or Block	Ring	Number of Acres of Land	Indicate Homestead or No		Indicate Agricultural or No	LAND Exclusive of Structures and Improvements	BUILDINGS and Other Structures	MACHINERY Permanently Attached to Real Estate	TOTAL True and Full Value	RURAL	ALL OTHER	MACHINERY Permanently Attached to Real Estate	TOTAL ASSESSED VALUE			District No.	District No.	District No.	District No.	District No.	District No.															
State of Minnesota		NE 1/4 of NE 1/4				35 1/4 26	C-1																																	
State of Minnesota		NW 1/4 of NE 1/4																																						
State of Minnesota		SW 1/4 of NE 1/4																																						
State of Minnesota		SE 1/4 of NE 1/4																																						
Robert & Genevieve Crandall	William C. & Lissax Crandall	NE 1/4 of NW 1/4				40	yes yes T	280			280	56		56					56	SOLD FOR TAXES	# 56		1132		1132	6										1132				
"	"	NW 1/4 of NW 1/4 less 1/4				40	" " T	280			280	56		56					56	SOLD FOR TAXES	# 56		1132		1132	7									1132					
James J. Flynn	State of Minnesota	SW 1/4 of NW 1/4				40	no " T	240			240	80		80					80	SOLD FOR TAXES	# 80 and 1955		1616	42	1658	8	Forfeited	11-15-55									16.58 cancelled			
"	State of Minnesota	SE 1/4 of NW 1/4				40	" " T	240			240	80		80					80	SOLD FOR TAXES	# 80 and 1955		1616	42	1658	9	Forfeited	11-15-55								16.58 cancelled				
J.W. + Eva Riddle	"	NE 1/4 of SW 1/4 less 1/4				40	" " T	270			270	90		90					90	SOLD FOR TAXES	90		1818	46	1864	11	PAID IN FULL	OCT 13 1955												
"	"	NW 1/4 of SW 1/4				40	" " T	270			270	90		90					90	SOLD FOR TAXES	90		1818	46	1864	12	PAID IN FULL	OCT 13 1955												
"	"	SW 1/4 of SW 1/4				40	" " T	270			270	90		90					90	SOLD FOR TAXES	90		1818	46	1864	13	PAID IN FULL	OCT 13 1955												
"	"	SE 1/4 of SW 1/4				40	" " T	270			270	90		90					90	SOLD FOR TAXES	90		1818	46	1864	14	PAID IN FULL	OCT 13 1955												
State of Minnesota		NE 1/4 of SE 1/4																																						
State of Minnesota		NW 1/4 of SE 1/4																																						
State of Minnesota		SW 1/4 of SE 1/4																																						
State of Minnesota		SE 1/4 of SE 1/4																																						
						320		2120			2120	112	500	632					520		# 112		12768	268	13036									7456	2264	33.16 Canc.				

Cooler-Trail Duck Pass

Oak Park Beaches

Oak Lawn Beach

1 1/2 Ray Point

Assessment Roll and Tax List of Real Property in the _____ of _____,
*Indicate Type of Property: R-Residential, C-Commercial, I-Industrial, U-Utility, F-Farm

Form 5CD (54) - MILES-DAVIS COMPANY, MINNEAPOLIS

Table with columns: IN WHOSE NAME ASSESSED, TO WHOM TRANSFERRED, DESCRIPTION OF PROPERTY (SUBDIVISION, Sec. or Lot, Town or Block, Rng, Acres, 100ths), TRUE AND FULL VALUATIONS (LAND, BUILDINGS, MACHINERY, TOTAL), ASSESSED VALUATIONS (RURAL, ALL OTHER, MACHINERY, TOTAL ASSESSED VALUE), Total Assessed Value as Equalized by the Board of Review, FINAL EQUALIZED VALUE.

Cass County, Minnesota, for Taxes for the Year 1954.

Table with columns: SOLD FOR TAXES, VALUATIONS BY SCHOOL DISTRICTS AS EQUALIZED BY DEPARTMENT OF TAXATION (District No., Rate, Mills), Tax including State Homestead, State Tax on Non-Homestead, SPECIAL TAXES, TOTAL TAXES, PAID, WHEN PAID (Month, Day, Year), Number of Receipt, March Settlement 1955, June Settlement 1955, November Settlement 1955, Collections to First Monday in January 1956, Delinquent on First Monday in January 1956, Total Delinquent Tax and Penalty, REMARKS.

Coolley-Trail Duck Pass, Oak Park Beaches, Oak Lawn Beach, Oak Rav Point

Assessment Roll and Tax List of Real Property in the _____ of _____,
*Indicate Type of Property: R-Residential, C-Commercial, I-Industrial, U-Utility, F-Farm

Table with columns: IN WHOSE NAME ASSESSED, TO WHOM TRANSFERRED, DESCRIPTION OF PROPERTY, TRUE AND FULL VALUATIONS, ASSESSED VALUATIONS, VALUATIONS BY SCHOOL DISTRICTS AS EQUALIZED BY DEPARTMENT OF TAXATION, SOLD FOR TAXES, PAID, WHEN PAID, Number of Receipt, March Settlement 1955, June Settlement 1955, Penalty, November Settlement 1955, Collections to First Monday in January 1956, Delinquent on First Monday in January 1956, Total Delinquent Tax and Penalty, REMARKS.

Cooley-Traill Duck Pass, Oak Park Beaches, Oak Lawn Beach, Oak Ray Point

Assessment Roll and Tax List of Real Property in the _____ of _____

*Indicate Type of Property: R-Residential, C-Commercial, I-Industrial, U-Utility, F-Farm

Form 5CD (54) WILCO-DAVIS COMPANY, MINNEAPOLIS

IN WHOSE NAME ASSESSED	TO WHOM TRANSFERRED	DESCRIPTION OF PROPERTY				No. School District	Indicate Homestead Yes or No	Indicate Agricultural Yes or No	Indicate Type of Property	TRUE AND FULL VALUATIONS				ASSESSED VALUATIONS					FINAL EQUALIZED VALUE Dollars			
		SUBDIVISION	Sec. of Lot	Town or Block	Rng					Number of Acres of Land	LAND Exclusive of Structures and Improvements	BUILDINGS and Other Structures	MACHINERY Permanently Attached to Real Estate	TOTAL True and Full Value	RURAL		ALL OTHER			MACHINERY Permanently Attached to Real Estate 33 1/8%	TOTAL ASSESSED VALUE	Total Assessed Value as Equalized by the Board of Review
															Homestead Up to \$4,000 20%	Over \$4,000 and Non-Homestead 33 1/8%	Homestead Up to \$4,000 25%	Over \$4,000 and Non-Homestead 40%				
															Dollars	Dollars	Dollars	Dollars				
					Acres	100ths			Dollars	Dollars	Dollars	Dollars	Dollars	Dollars	Dollars	Dollars						
		1																				
		2																				
		3																				
		4																				
		5																				
		6																				
		7																				
		8																				
		9																				
		10																				
		11																				
		12																				
		13																				
		14																				
		15																				
		16																				
		17																				
		18																				
		19																				
		20																				

Cass County, Minnesota, for Taxes for the Year 1954.

SOLD FOR TAXES	VALUATIONS BY SCHOOL DISTRICTS AS EQUALIZED BY DEPARTMENT OF TAXATION						Tax including State HomesteadMills	State Tax on Non-HomesteadMills	SPECIAL TAXES	TOTAL TAXES	PAID	WHEN PAID	Number of Receipt	March Settlement 1955	June Settlement 1955	Penalty	November Settlement 1955	Penalty	Collections to First Monday in January 1956	Penalty	Delinquent on First Monday in January 1956	Total Delinquent Tax and Penalty	REMARKS
	District No.	District No.	District No.	District No.	District No.	District No.																	
	Rate.....	Rate.....	Rate.....	Rate.....	Rate.....	Rate.....																	
	Mills	Mills	Mills	Mills	Mills	Mills																	
1																							
2																							
3																							
4																							
5																							
6																							
7																							
8																							
9																							
10																							
11																							
12																							
13																							
14																							
15																							
16																							
17																							
18																							
19																							
20																							

Cooley-Trail Duck Pass
 Oak Park Beaches
 Oak Lawn Beach
 Oak Ray Point

Assessment Roll and Tax List of Real Property in the town of Shower Lake, *Indicate Type of Property: R-Residential, C-Commercial, I-Industrial, U-Utility, F-Farm

Table with columns for IN WHOSE NAME ASSESSED, TO WHOM TRANSFERRED, SUBDIVISION, DESCRIPTION OF PROPERTY, TRUE AND FULL VALUATIONS, ASSESSED VALUATIONS, and FINAL EQUALIZED VALUE.

Cass County, Minnesota, for Taxes for the Year 1954.

Table with columns for SOLD FOR TAXES, VALUATIONS BY SCHOOL DISTRICTS AS EQUALIZED BY DEPARTMENT OF TAXATION, Tax including State Homestead, State Tax on Non-Homestead, SPECIAL TAXES, TOTAL TAXES, PAID, WHEN PAID, Number of Receipt, March Settlement, June Settlement, Penalty, November Settlement, Collections to First Monday in January 1956, Delinquent on First Monday in January 1956, Total Delinquent Tax and Penalty, and REMARKS.

Assessment Roll and Tax List of Real Property in the Town of Thunder Lake

*Indicate Type of Property: R-Residential, C-Commercial, I-Industrial, U-Utility, F-Farm

Table with columns: IN WHOSE NAME ASSESSED, TO WHOM TRANSFERRED, DESCRIPTION OF PROPERTY, TRUE AND FULL VALUATIONS, ASSESSED VALUATIONS, FINAL EQUALIZED VALUE. Includes entries for Carl D. & Grace D. Taylor, Clara Romain, Sidney Olson, R. G. & Mattie M. Brown, Raymond C. & Robert W. Campbell, Ellen L. Elliott, and State of Minnesota.

Cass County, Minnesota, for Taxes for the Year 1954.

Table with columns: SOLD FOR TAXES, VALUATIONS BY SCHOOL DISTRICTS AS EQUALIZED BY DEPARTMENT OF TAXATION, Tax including State Homestead, State Tax on Non-Homestead, SPECIAL TAXES, TOTAL TAXES, PAID, WHEN PAID, Number of Receipt, March Settlement 1955, June Settlement 1955, November Settlement 1955, Penalty, Collections to First Monday in January 1956, Delinquent on First Monday in January 1956, Total Delinquent Tax and Penalty, REMARKS. Includes entries for 1-17, 13 SOLD FOR TAXES, 14 SOLD FOR TAXES, 15 SOLD FOR TAXES, 16 SOLD FOR TAXES, 17 SOLD FOR TAXES, and summary rows for 173, 174, 347.

Cooley Trail-Duck Pass, Oak Park Beaches

1st Addn to Birch, Terrace, Oak Lawn Beach, 1st Ray Point

Assessment Roll and Tax List of Real Property in the Town of Thunder Lake,
 *Indicate Type of Property: R-Residential, C-Commercial, I-Industrial, U-Utility, F-Farm

IN WHOSE NAME ASSESSED	TO WHOM TRANSFERRED	DESCRIPTION OF PROPERTY				No. School District	Indicate Homestead Yes or No	Indicate Agricultural Yes or No	Indicate Type of Property	TRUE AND FULL VALUATIONS					ASSESSED VALUATIONS					FINAL EQUALIZED VALUE Dollars		
		SUBDIVISION	Sec. or Lot	Town or Block	Rng					Number of Acres of Land Acres 100ths	LAND Exclusive of Structures and Improvements	BUILDINGS and Other Structures	MACHINERY Permanently Attached to Real Estate	TOTAL True and Full Value	RURAL		ALL OTHER		MACHINERY Permanently Attached to Real Estate		TOTAL ASSESSED VALUE	Total Assessed Value as Equalized by the Board of Review
															Homestead Up to \$4,000 20%	Over \$4,000 and Non- Homestead 33 1/3%	Homestead Up to \$4,000 25%	Over \$4,000 and Non- Homestead 40%				
		<i>Oak Park Beaches</i>								Dollars	Dollars	Dollars	Dollars	Dollars	Dollars	Dollars	Dollars	Dollars				
<i>Charles A. Graham & Ada Graham</i>			1	2		C-1	70	L		30	105		135	45		45						
"	"	"	2			"	"	L		30			30	10		10						
"	"	"	3			"	"	L		30			30	10		10						
"	"	"	4			"	"	L		30			30	10		10						
"	"	"	5			"	"	L		30			30	10		10						
"	"	"	6			"	"	L		30			30	10		10						
"	"	"	7			"	"	L		30			30	10		10						
"	"	"	8			"	"	L		30			30	10		10						
<i>Le Roy O. Moore</i>			9			"	"	L		30	90		120	40		40						
"	"		10			"	"	L		30			30	10		10						
<i>W. C. Cooper</i>			11			"	"	L		30			30	10		10						
<i>Charles A. Graham & Ada Graham</i>			12			"	"	L		30			30	10		10						
State of Minnesota		<i>Outlet A.</i>	13																			
			14																			
			15																			
			16																			
			17																			
			18																			
			19																			
			20																			
										<i>360</i>	<i>195</i>	<i>555</i>	<i>185</i>		<i>185</i>							

Cass County, Minnesota, for Taxes for the Year 1954.

SOLD FOR TAXES	VALUATIONS BY SCHOOL DISTRICTS AS EQUALIZED BY DEPARTMENT OF TAXATION						Tax including State Homestead Mills	State Tax on Non-Homestead 5.22 Mills	SPECIAL TAXES	TOTAL TAXES	PAID	WHEN PAID	Number of Receipt	March Settlement 1955	June Settlement 1955	Penalty 1955	November Settlement 1955	Penalty 1955	Collections to First Monday in January 1956	Penalty 1956	Delinquent on First Monday in January 1956	Total Delinquent Tax and Penalty	REMARKS
	District No.	District No.	District No.	District No.	District No.	District No.																	
	Rate..... Mills	Rate..... Mills	Rate..... Mills	Rate..... Mills	Rate..... Mills	Rate..... Mills																	
1																							
2																							
3																							
4																							
5																							
6																							
7																							
8																							
9																							
10																							
11																							
12																							
13																							
14																							
15																							
16																							
17																							
18																							
19																							
20																							
										<i>185</i>	<i>4210</i>	<i>104</i>	<i>4314</i>		<i>2274</i>	<i>2040</i>							

Cooley Trail-Duck Pass
Oak Park Beaches

1st Adm'n to District
Terrace
Oak Lawn Beach
1st Ray Point

Assessment Roll and Tax List of Real Property in the Town of Thunder Lake, Cass County, Minnesota, for Taxes for the Year 1954.

Table with columns: IN WHOSE NAME ASSESSED, TO WHOM TRANSFERRED, SUBDIVISION, TRUE AND FULL VALUATIONS, ASSESSED VALUATIONS, VALUATIONS BY SCHOOL DISTRICTS AS EQUALIZED BY DEPARTMENT OF TAXATION, SOLD FOR TAXES, PAID, WHEN PAID, Number of Receipt, March Settlement 1955, June Settlement 1955, November Settlement 1955, Collections to First Monday in January 1956, Delinquent on First Monday in January 1956, Total Delinquent Tax and Penalty, REMARKS.

Cooley Trail-Duck Pass

Oak Park Beaches

Oak Lawn Beach

1st Adm to Birchwood Terrace

Ray Point Tab of

Assessment Roll and Tax List of Real Property in the Town of Thunder Lake

*Indicate Type of Property: R-Residential, C-Commercial, I-Industrial, U-Utility, F-Farm

Cass County, Minnesota, for Taxes for the Year 1954.

Table with columns: IN WHOSE NAME ASSESSED, TO WHOM TRANSFERRED, SUBDIVISION, DESCRIPTION OF PROPERTY, TRUE AND FULL VALUATIONS, ASSESSED VALUATIONS, VALUATIONS BY SCHOOL DISTRICTS AS EQUALIZED BY DEPARTMENT OF TAXATION, TAX INCLUDING STATE HOMESTEAD, SPECIAL TAXES, TOTAL TAXES, PAID, WHEN PAID, Number of Receipt, March Settlement 1955, June Settlement 1955, Penalty, November Settlement 1955, Penalty, Collections to First Monday in January 1956, Penalty, Delinquent on First Monday in January 1956, Total Delinquent Tax and Penalty, REMARKS.

Coolley Trail-Duck Ponds

Oak Park Beaches

Oak Farm Beach

1st Add'n to Birchwood Terrace

Del Ray Pointe 1st or

Assessment Roll and Tax List of Real Property in the town of Thunder Lake

*Indicate Type of Property: R-Residential, C-Commercial, I-Industrial, U-Utility, F-Farm

Table with columns: IN WHOSE NAME ASSESSED, TO WHOM TRANSFERRED, SUBDIVISION, DESCRIPTION OF PROPERTY, TRUE AND FULL VALUATIONS, ASSESSED VALUATIONS, FINAL EQUALIZED VALUE. Includes entries for Harlan K. & Mary Louise Nygaard, Carl S. Hage, and Frank X. Henke.

Cass County, Minnesota, for Taxes for the Year 1954.

Table with columns: VALUATIONS BY SCHOOL DISTRICTS AS EQUALIZED BY DEPARTMENT OF TAXATION, Tax including State Homestead, State Tax on Non-Homestead, SPECIAL TAXES, TOTAL TAXES, PAID, WHEN PAID, Number of Receipt, March Settlement 1955, June Settlement 1955, November Settlement 1955, Collections to First Monday in January 1956, Delinquent on First Monday in January 1956, Total Delinquent Tax and Penalty, REMARKS. Includes tax details for properties 1 through 10.

Assessment Roll and Tax List of Real Property in the Town of Thunder Lake, Cass County, Minnesota, for Taxes for the Year 1954.

* Indicate Type of Property: R-Residential, C-Commercial, I-Industrial, U-Utility, F-Farm

Table with columns: IN WHOSE NAME ASSESSED, TO WHOM TRANSFERRED, SUBDIVISION, DESCRIPTION OF PROPERTY, TRUE AND FULL VALUATIONS, ASSESSED VALUATIONS, FINAL EQUALIZED VALUE.

Cass County, Minnesota, for Taxes for the Year 1954.

Table with columns: SOLD FOR TAXES, VALUATIONS BY SCHOOL DISTRICTS AS EQUALIZED BY DEPARTMENT OF TAXATION, Tax including State Homestead, State Tax on Non-Homestead, SPECIAL TAXES, TOTAL TAXES, PAID, WHEN PAID, Number of Receipt, March Settlement 1955, June Settlement 1955, November Settlement 1955, Collections to First Monday in January 1956, Delinquent on First Monday in January 1956, Total Delinquent Tax and Penalty, REMARKS.

Assessment Roll and Tax List of Real Property in the Town of Thunder Lake, Cass County, Minnesota, for Taxes for the Year 1954.

* Indicate Type of Property: R-Residential, C-Commercial, I-Industrial, U-Utility, F-Farm

Table with multiple columns: IN WHOSE NAME ASSESSED, TO WHOM TRANSFERRED, DESCRIPTION OF PROPERTY, TRUE AND FULL VALUATIONS, ASSESSED VALUATIONS, VALUATIONS BY SCHOOL DISTRICTS AS EQUALIZED BY DEPARTMENT OF TAXATION, TAXES, PAID, WHEN PAID, Number of Receipt, March Settlement 1955, June Settlement 1955, Penalty, November Settlement 1955, Collections to First Monday in January 1956, Delinquent on First Monday in January 1956, Total Delinquent Tax and Penalty, REMARKS.

Coolley Trail-Duck Pass

Cooley Trail-Duck Pass

Cooley Trail-Duck Pass

Cooley Trail-Duck Pass

Cooley Trail-Duck Pass

Cass County, Minnesota, for Taxes for the Year 1954.

540 540 180 180 180

3636 108 3744

3744

Assessment Roll and Tax List of Real Property in the _____ of _____,
*Indicate Type of Property: R-Residential, C-Commercial, I-Industrial, U-Utility, F-Farm

Table with columns: IN WHOSE NAME ASSESSED, TO WHOM TRANSFERRED, DESCRIPTION OF PROPERTY, TRUE AND FULL VALUATIONS, ASSESSED VALUATIONS, VALUATIONS BY SCHOOL DISTRICTS AS EQUALIZED BY DEPARTMENT OF TAXATION, TAXES, PAID, WHEN PAID, Number of Receipt, March Settlement 1955, June Settlement 1955, November Settlement 1955, Collections to First Monday in January 1956, Delinquent on First Monday in January 1956, Total Delinquent Tax and Penalty, REMARKS.

Grand total (See next page) 795122

81651 73961

155612-1036034604

44764

Handwritten calculations: H 7130 3202 = 10332, 26113 7235 = 33348 A-C-1 671836, 33243 10437 = 436801 A-C-1 237022

908908 17498 926406

Vertical text on the left margin: Cooley Trail-Duck Pass, Oak Point, P.F.6, etc.

