

Assessment & Tax List - 1954

Thunder Lake

Returns Showing Grain Received in or Handled by Elevators, Warehouses and Mills in the _____ of _____ in the
County of _____ for the Year Ending May 1, 1954.

INDEX TO SECTIONS

SECTION	PAGE
Sec. 1	
" 2	
" 3	
" 4	
" 5	
" 6	
" 7	
" 8	
" 9	
" 10	
" 11	
" 12	
" 13	
" 14	
" 15	
" 16	
" 17	
" 18	
" 19	
" 20	
" 21	
" 22	
" 23	
" 24	
" 25	
" 26	
" 27	
" 28	
" 29	
" 30	
" 31	
" 32	
" 33	
" 34	
" 35	
" 36	

For Convenience of Auditor in Showing Boundaries of School Districts

Township No. 140 Range No. 26 Mer. P. M.



*All Thunder Lake Trap
is joined to sch.
Dist. #81 - 8-1951*

NAMES OF OWNERS	ADDRESS	Bushels of Wheat	Bushels of Soy Beans	Bushels of Flax	Total No. of Bushels of Wheat, Soy Beans and Flax	Tax of $\frac{1}{2}$ Mill per Bushel		Bushels of Corn	Bushels of Barley	Bushels of Rye	Bushels of Oats	Bushels of Buckwheat	Bushels of all Other Grains	Total No. Bushels Corn, Barley, Rye, Oats, Buckwheat and all Other Grains	Tax of $\frac{1}{2}$ Mill Per Bushel		* Total Tax		REMARKS
						Dollars	Cts.								Dollars	Cts.	Dollars	Cts.	

Note * Assessors will not fill these Columns

SUMMARY OF TAX COLLECTION

Original Levy	- - - - -	\$ 19,723.04	
Additions	- - - - -	\$ 5.12	
			\$ 10,738.16
Abatements	- - - - -	\$ 145.34	
			\$ 10,592.82
COLLECTIONS			
March Settlement	- - - - -	\$ 1,769.74	
June Settlement	- - - - -	\$ 5,274.27	
November Settlement	- - - - -	\$ 1,815.06	
January Settlement	- - - - -	\$ 102.40	\$ 8,961.47
			\$
Over Collected	- - - - -	\$	
Under Collected	- - - - -	\$	
Delinquent	- - - - -	\$ 1,631.35	\$ 1,631.35
Total	- - - - -		\$ 10,592.82

TABULAR SCHEDULE OF VALUATIONS,

LEVIED IN THE Town OF Thunder Lake

School District No.	VALUATION BY SCHOOL DISTRICTS				RATE OF STATE TAXES		RATE OF COUNTY TAXES										RATE OF TOWN TAXES										RATE OF									
	Agri-cultural Lands	Non-Agri-cultural Lands	Personal Property	Total Value of all Property except Money and Credits	Total Rate of State Tax	Total Rate of County Tax	Rev.	R. & B.	Wel. fare	Bonds and Int.	R. & B. Sky.	Total Rate of County Tax	Rev.	R. & B.	Drag Tax	State Loan	Deficiency	Tuition	Transportation	Total Rate of Town Tax	Local	Special	State Loan	Deficiency	Tuition	Transportation	Total Rate of Town Tax	Local	Special	State Loan	Deficiency	Tuition	Transportation			
C1	33243	10437	6147 5775	59,069	H. 3.93	28.11	14.91	60.19	11.47	2.	106.68	7.	12.	1.	10.				30.	1.	25.	28.5	1.5	5.5		86.5	227.11	3386	84643	96492	5079	18621	208221			
Assessed Value	Rural 10332	All Other	Personal Property	Total 10,332																																
Non-Homestead	33348		6389	39137																																
Total	43680		6389	50,069																																

RATES AND TAXES

COUNTY OF CASS, STATE OF MINNESOTA

SCHOOL TAXES										TAXES LEVIED									
LOCAL 1 MILL AND SPECIAL SCHOOL TAXES BY DISTRICTS										ALL OTHER TAXES									
Total Rate of Sch'l Tax	Total Rate of all Taxes	Local 1 Mill	Special	State Loan	Def. Transp.	Tuition	Transportation	FUNDS	Rate	Amounts									
61.5	227.11	3386	84643	96492	5079	18621	208221	State - Non-Homestead		20836									
86.5	227.11	1621	81060	46204	2432	8917	140234	State - Homestead		19677									
		5007	165703	142696	7511	27538	348455	County Revenue		140740									
								County Road and Bridge		74653									
								County Welfare		251293									
								Bonds and Interest		57429									
								<i>H. B. Sealing</i>		10014									
										534129									
								Town Revenue		35048									
								Town Road and Bridge		60383									
								Town Drag		5007									
								Town State Loan		50069									
								<i>None</i>		150207									
								School Local 1 Mill		5007									
								School Special		165703									
								School State Loan		142696									
								Deficiency											
								Tuition		7511									
								Transportation		27538									
								<i>C. O.</i>		348455									

Total Taxes Real Estate 9264.06
 Pers. Prop. 1468.98
 Total 10,733.04

Total Number of Acres 7957.22
 State of Minnesota, ss. L. C. Peterson
 COUNTY OF CASS Auditor of said County and State of Minnesota, do hereby certify that the foregoing is a true and correct Schedule, showing the valuation of all the taxable property, in the Town of Thunder Lake, in said County, the several rates of Taxation and Totals of the several Tax Funds levied thereon for the year A. D. 1954.
 Witness my hand and official seal, this 3d day of January, A. D. 1954.
L. C. Peterson County Auditor.
By Allen Biller, Deputy



COLLECTIONS OF TAXES OF 1954

Town OF Thunder Lake, CASS COUNTY, MINNESOTA

FUNDS	MARCH SETTLEMENT 1954	JUNE SETTLEMENT 1954	NOV. SETTLEMENT 1954	Amount Collected from Nov. 1954 to First Monday in Jan. 1955	REDUCTIONS	Total Reductions and Collected	BALANCE UNCOLLECTED	ADDITIONS	Total Uncollected to First Monday in January, 1955
State-Non-Homestead,	3555	10169	3400	58					
State-Homestead,	3098	9700	3406	197					
County Revenue,	22158	69380	24360	1416					
County Road and Bridge,	11753	36800	12921	751					
County Welfare,	39562	123879	45495	2338					
County Bond and Interest,	9041	21310	9940	579					
<i>H. & G. Sinking</i>	1576	4936	1733	101					
Town Revenue,	5518	17277	6066	353					
Town Road and Bridge,	9459	29618	10399	605					
Town Drain,	781	2468	867	50					
Town State Loan, <i>fare</i>	7882	24682	9066	504					
School Local & Mill,	787	2469	866	50					
School Special,	33814	80120	24622	1261					
School State Loan, Deficiency	22465	70343	24699	1436					
Tuition									
Transportation	688	3702	1300	75					
C. O.	4536	13575	4766	277					
	176974	527427	181506	10240					

	SCHOOL DISTRICT NO.	LOCAL 1 MILL	SPECIAL	STATE LOAN	Deficiency	Transport.	C. O.	TOTALS
MARCH SETTLEMENT	A-CI	223	5599		6383	336	1232	13773
	Na-CI	564	28215		16072	846	3104	48811
	Totals	787	33814		22465	1182	4336	62584
JUNE SETTLEMENT	A-CI	1732	43289		49349	2597	9524	106491
	Na-CI	737	36831		20994	1105	4051	63718
	Totals	2469	80120		70343	3702	13575	170209
NOVEMBER SETTLEMENT	A-CI	748	18710		21330	1123	416	46027
	Na-CI	118	5712		3369	177	650	70226
	Totals	866	24622		24699	1300	4766	56253
NOVEMBER to JANUARY	A-CI	50	1261		1436	75	277	3099
	Totals	50	1261		1436	75	277	3099
	ADDITIONS							
REDUCTIONS	SCHOOL DISTRICT NO.							
	Totals							
	Totals							

Assessment Roll and Tax List of Real Property in the Town of Thunder Lake

*Indicate Type of Property: R-Residential, C-Commercial, I-Industrial, U-Utility, F-Farm

Cass County, Minnesota, for Taxes for the Year 1954.

Table with columns for IN WHOSE NAME ASSESSED, TO WHOM TRANSFERRED, DESCRIPTION OF PROPERTY, TRUE AND FULL VALUATIONS, ASSESSED VALUATIONS, FINAL EQUALIZED VALUE, SOLD FOR TAXES, VALIDATIONS BY SCHOOL DISTRICTS AS EQUALIZED BY DEPARTMENT OF TAXATION, Tax Including State Homestead, State Tax on Non-Homestead, SPECIAL TAXES, TOTAL TAXES, PAID, WHEN PAID, Number of Receipt, March Settlement 1955, June Settlement 1955, Penalty, November Settlement 1955, Penalty, Collections to First Monday in January 1956, Penalty, Delinquent on First Monday in January 1956, Total Delinquent Tax and Penalty, REMARKS.

Assessment Roll and Tax List of Real Property in the Town of Thunder Lake

Cass County, Minnesota, for Taxes for the Year 1954.

Table with columns: IN WHOSE NAME ASSESSED, TO WHOM TRANSFERRED, DESCRIPTION OF PROPERTY, TRUE AND FULL VALUATIONS, ASSESSED VALUATIONS, VALUATIONS BY SCHOOL DISTRICTS AS EQUALIZED BY DEPARTMENT OF TAXATION, TAX INCLUDING STATE HOMESTEAD, STATE TAX ON NON-HOMESTEAD, SPECIAL TAXES, TOTAL TAXES, PAID, WHEN PAID, Number of Receipt, March Settlement 1955, June Settlement 1955, Penalty, November Settlement 1955, Penalty, Collections to First Monday in January 1956, Delinquent on First Monday in January 1956, Total Delinquent Tax and Penalty, REMARKS.

Robert L. & Maria M. Wagner

all of Lot 2 & of Lot 6 also the 1/2 of a 1/2 of that part of Lot 2 lying between the 1/2 of the 1/2 of Lot 2 & the 1/2 of Lot 6.

State of Minnesota

John & Corinne Weber

approx 6 100' of that part of Lot 1 lying between the 1/2 of Lot 1 & the 1/2 of Lot 2.

Ernest W. & D. H. Hanson & P. O. Helgeson

Myron & Nellie Stratton

State of Minnesota

State of Minnesota

State of Minnesota

State of Minnesota

State of Minnesota

State of Minnesota

State of Minnesota

Garfield A. & Nellie P. Murphy

2 1/2 100' of that part of Lot 2 lying between the 1/2 of Lot 2 & the 1/2 of Lot 6.

State of Minnesota

State of Minnesota

State of Minnesota

State of Minnesota

State of Minnesota

87 67

803 100.00

1803 264 161

425

4364 161 425

8588 84

8672

3810

1246

3616

Coolley-Trail Duck Pass - Oak Park Beaches - Oak Lawn Beach - Ray Point

Assessment Roll and Tax List of Real Property in the Town of Downer of Drummer Lake

*Indicate Type of Property: R-Residential, C-Commercial, I-Industrial, U-Utility, F-Farm

Cass County, Minnesota, for Taxes for the Year 1954.

Table with columns: IN WHOSE NAME ASSESSED, TO WHOM TRANSFERRED, SUBDIVISION, TRUE AND FULL VALUATIONS, ASSESSED VALUATIONS, VALUATIONS BY SCHOOL DISTRICTS, Tax including State Homestead, State Tax on Non-Homestead, SPECIAL TAXES, TOTAL TAXES, PAID, WHEN PAID, Number of Receipt, March Settlement, June Settlement, November Settlement, Collections to First Monday in January, Delinquent on First Monday in January, Total Delinquent Tax and Penalty, REMARKS.

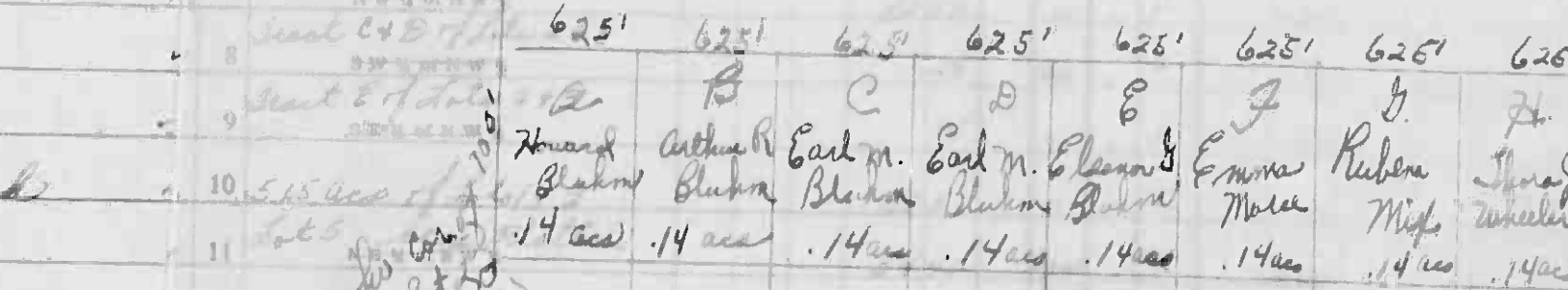
Assessment Roll and Tax List of Real Property in the

Indicate Type of Property by Initial: A - Residential, C - Commercial, I - Industrial, U - Utility, F - Farm

Cass County, Minnesota, for Taxes for the Year 1954.

IN WHOSE NAME ASSESSED	TO WHOM TRANSFERRED	ASSESSMENT VALUATIONS	FURTHER VALUATIONS	Machinery Permanently Attached to Real Estate 33 1/3%	TOTAL ASSESSED VALUE	Total Assessed Value as Equalized by the Board of Review	FINAL EQUALIZED VALUE	SOLD FOR TAXES	VALUATIONS BY SCHOOL DISTRICTS AS EQUALIZED BY DEPARTMENT OF TAXATION						Tax including State Homestead 5.22 Mills	State Tax on Non-Homestead 6.22 Mills	SPECIAL TAXES	TOTAL TAXES	PAID	WHEN PAID	Number of Receipt	March Settlement 1955	June Settlement 1955	Penalty	November Settlement 1955	Penalty	Collections to First Monday in January 1956	Penalty	Delinquent on First Monday in January 1956	Total Delinquent Tax and Penalty	REMARKS				
									District No.	District No.	District No.	District No.	District No.	District No.																		Rate	Rate	Rate	Rate
									Rate	Rate	Rate	Rate	Rate	Rate																		Mills	Mills	Mills	Mills
1 Mrs. Hugo Eisenach					10								202	06		208	1	PAID IN FULL	APR 1 1955	4907															
2 Ella Bettina Metzke					10								202	06		208	2	PAID IN FULL	MAR 23 1955	4775															
3 State of Minnesota					10																														
4 Dr. W. A. E. Leason Becker													242	06		248	4													248 x 273					
5 Wilhelmina Bluhm					12								486			486	5														486				
6 Cecil A. Bluhm					24								486			486	6	1st Half Paid	MAY 31 1955	15504			1233		1233										
7 " "					122								2466			2466	6	2nd Half Paid	OCT 31 1955	4414			465		465										
8 Earl M. Bluhm					46								930			930	7	1st Half Paid	MAY 31 1955	15504															
9 Eleanor E. Bluhm					95								1920	50		1970	8	PAID IN FULL	MAY 31 1955	4414															
10 Hugh & Hattie Eisenach					10								202	06		208	9	PAID IN FULL	MAY 31 1955	4414															
11 Cecil Bluhm					60								1212	32		1244	10	PAID IN FULL	APR 14 1955	4907															
12 Alva & Ellen Elliot					52								1050			1050	11	1st Half Paid	MAY 31 1955	9414															
13 " "					249								5656	66		5722	12	2nd Half Paid	OCT 31 1955	15504												5722 x 6294			
14 Cecil A. Bluhm					64								1294			1294	13	1st Half Paid	MAY 31 1955	9414													1294 x 1423		
15 " "					34								688			688	14	2nd Half Paid	OCT 31 1955	15504															
16 Cecil A. Bluhm					36								728			728	16	1st Half Paid	MAY 31 1955	9414															
17 " "					36								728			728	17	2nd Half Paid	OCT 31 1955	15504															
18 Thomas M. R. / E. M.					76								1536			1536	19	PAID IN FULL	MAY 31 1955	8998															
				33176		123611		770		9120		454		197		651		124 = 598.70		5656		172		18986		8305		2931		7750					

100' x 500' of Lot 2 & 1/4 ac. of Lot 3 Sec. 6-140-26



Tract Lake

Assessment Roll and Tax List of Real Property in the Town of Thunder Lake

*Indicate Type of Property: R-Residential, C-Commercial, I-Industrial, U-Utility, F-Farm

Cass County, Minnesota, for Taxes for the Year 1954.

Table with columns: IN WHOSE NAME ASSESSED, TO WHOM TRANSFERRED, DESCRIPTION OF PROPERTY, TRUE AND FULL VALUATIONS, ABSESSED VALUATIONS, VALUATIONS BY SCHOOL DISTRICTS AS EQUALIZED BY DEPARTMENT OF TAXATION, TAXES, PAID, WHEN PAID, Number of Receipt, March Settlement 1955, June Settlement 1955, November Settlement 1955, Collections to First Monday in January 1956, Delinquent on First Monday in January 1956, Total Delinquent Tax and Penalty, REMARKS.

State of Minnesota

State of Minnesota

State of Minnesota

U. S. of America

U. S. of America

U. S. of America

Harold Meyers

4-1-54

Out Party 3150 711 3491 1397 1200 5288 597

Part Paid MAY 7 1955 1423 23 11

PAID IN FULL MAY 31 1955 9421 3474

See Abate # 4301 out party

7785

2291 10594

597

20148 522

20670

Assessment Roll and Tax List of Real Property in the Town of Thunder Lake

*Indicate Type of Property: R-Residential, C-Commercial, I-Industrial, U-Utility, F-Farm

Table with columns: IN WHOSE NAME ASSESSED, TO WHOM TRANSFERRED, DESCRIPTION OF PROPERTY, TRUE AND FULL VALUATIONS (LAND, BUILDINGS, MACHINERY, TOTAL), ASSESSED VALUATIONS (RURAL, ALL OTHER, MACHINERY, TOTAL ASSESSED), and FINAL EQUALIZED VALUE.

Cass County, Minnesota, for Taxes for the Year 1954.

Table with columns: SOLD FOR TAXES, VALUATIONS BY SCHOOL DISTRICTS AS EQUALIZED BY DEPARTMENT OF TAXATION, Tax Including State Homestead, State Tax on Non-Homestead, SPECIAL TAXES, TOTAL TAXES, PAID, WHEN PAID, Number of Receipt, March Settlement 1955, June Settlement 1955, November Settlement 1955, Collections to First Monday in January 1956, Delinquent on First Monday in January 1956, Total Delinquent Tax and Penalty, and REMARKS.

Assessment Roll and Tax List of Real Property in the

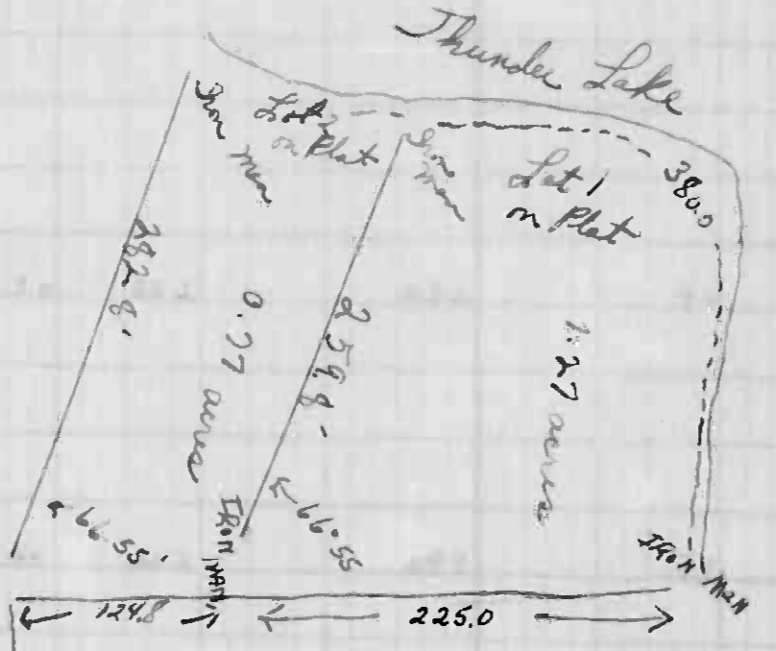
Indicate Type of Property: R-Residential, C-Commercial, I-Industrial, U-Utility, F-Farm

Cass County, Minnesota, for Taxes for the Year 1954.

IN WHOSE NAME ASSESSED	TO WHOM TRANSFERRED	VALUATIONS	FINAL EQUALIZED VALUE
		MACHINERY Permanently Attached to Real Estate 33 1/3% Total Assessed Value as Equipped by the Board of Review	Dollars
George B. Steiner & Lawrence M. Steiner			250.0
C. P. Gerber			
J. H. & Alice C. Charland			99
Ernest W. & Nancy C. Cot & Ethel M. Cot			99
Charles O. & Della M. Sherwood			99
Louise C. & Anna C. Henke			125
Leo Albert & Melvin Parish & Vernon Sinclair & Paul Hendrickson & Paul Waller			317
Wm. B. & Mary E. Wagner			100
Louise A. Bates			106
H. L. & Emma J. Minor			110
W. D. & Edythe Chamberlain			230
Ralph H. & Hazel V. Nordeen			20
Ray B. Jones			439
Michael J. Holsess			4140

1916 and completed left

14.58 ac. now Plat of 8.5.6



1/4 Sec. 33

Com. 950.77 & we there hold title

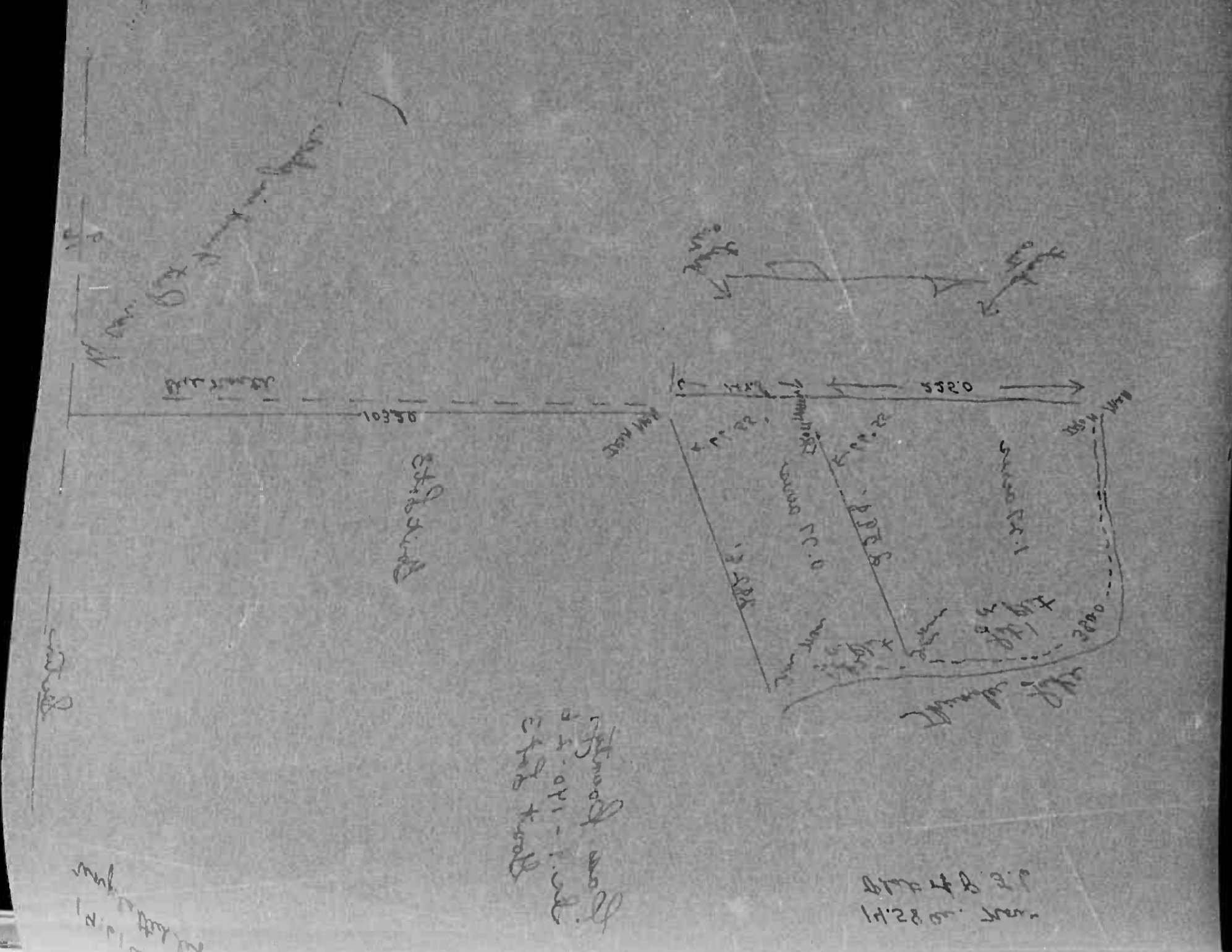
16198 E of W. 1/2 of Lot 2 9/14/54

SOLD FOR TAXES	VALUATIONS BY SCHOOL DISTRICTS AS EQUALIZED BY DEPARTMENT OF TAXATION					Tax Including State Homestead	State Tax on Non-Homestead	SPECIAL TAXES	TOTAL TAXES	PAID	WHEN PAID	Number of Receipt	March Settlement 1955	June Settlement 1955	Penalty	November Settlement 1955	Penalty	Collections to First Monday in January 1956	Penalty	Delinquent on First Monday in January 1956	Total Delinquent Tax and Penalty	REMARKS	
	District No.	District No.	District No.	District No.	District No.																		
1						505.28	130.6		518.34	1	1st Half Paid MAY 31 1955 2nd Half Paid OCT 24 1955	4430 15010		259.17		259.17							
2										2													
3										3													
4										4													
5										5													
6						1900	50		1950	6	PAID IN FULL MAY 31 1955	4426		19.50									
7										7													
8										8													
9										9													
10						2000	52		2052	10	1st Half Paid MAY 31 1955 2nd Half Paid OCT 19 1955	4425 14190		10.26		10.26							
11										11													
12										12													
13						2526	66		2592	13	PAID IN FULL MAY 24 1955	6052		25.92									
14						1354	36	Abate #6382	1390	14	PAID IN FULL MAY 31 1955	9432		13.90								51.82 Abate	
15						2022	52		2074	15	PAID IN FULL MAY 10 1955	5591		20.74									
16						2142	56		2198	16	PAID IN FULL MAY 31 1955	9429		21.98									
17						2224	58		2282	17	1st Half Paid MAY 31 1955 2nd Half Paid OCT 20 1955	9427 14230		11.41		11.41							
18						4648	120		4768	18	PAID IN FULL MAR 30 1955	4728		47.68									
19						404	10		414	19	PAID IN FULL MAY 31 1955	9428		4.14									
20	FOR TAXER					8972	160		9032	20													
						83672	2096		85768					43470		28084					7032 + 9935		

Cooley-Trail Duck Pass
Oak Park Beaches
Oak Lawn Beach
Ray Point

Assessment Roll and Tax List of Real Property in the Town of Thunder Lake, Cass County, Minnesota, for Taxes for the Year 1954.

Table with columns: IN WHOSE NAME ASSESSED, TO WHOM TRANSFERRED, DESCRIPTION OF PROPERTY, TRUE AND FULL VALUATIONS, ASSESSED VALUATIONS, TOTAL ASSESSED VALUE, and FINAL EQUALIZED VALUE. Includes handwritten entries for George B. Steiner, C. P. Gerber, and others.



Cass County, Minnesota, for Taxes for the Year 1954.

Table with columns: VALUATIONS BY SCHOOL DISTRICTS AS EQUALIZED BY DEPARTMENT OF TAXATION, TAXES, PAID, WHEN PAID, Number of Receipt, March Settlement 1955, June Settlement 1955, November Settlement 1955, Collections to First Monday in January 1956, Delinquent on First Monday in January 1956, Total Delinquent Tax and Penalty, and REMARKS. Includes handwritten entries for 'Abate #6382' and 'Abate #6382'.

Assessment Roll and Tax List of Real Property in the Town of Thunder Lake, Cass County, Minnesota, for Taxes for the Year 1954.

Table with columns: IN WHOSE NAME ASSESSED, TO WHOM TRANSFERRED, DESCRIPTION OF PROPERTY, TRUE AND FULL VALUATIONS, ASSESSED VALUATIONS, FINAL EQUALIZED VALUE. Includes handwritten entries for various lots and descriptions.

Cass County, Minnesota, for Taxes for the Year 1954.

Table with columns: VALUATIONS BY SCHOOL DISTRICTS AS EQUALIZED BY DEPARTMENT OF TAXATION, TAX INCLUDING STATE HOMESTEAD, SPECIAL TAXES, TOTAL TAXES, PAID, WHEN PAID, Number of Receipt, March Settlement, June Settlement, November Settlement, Collections to First Monday in January 1956, Delinquent on First Monday in January 1956, Total Delinquent Tax and Penalty, REMARKS. Includes handwritten tax payment details.

Assessment Roll and Tax List of Real Property in the Town of Shanley Lake

*Indicate Type of Property: R-Residential, C-Commercial, I-Industrial, U-Utility, F-Farm

IN WHOSE NAME ASSESSED	TO WHOM TRANSFERRED	DESCRIPTION OF PROPERTY				No. School District	Indicates Homestead Yes or No	Indicates Agricultural Yes or No	Indicates Type of Property	TRUE AND FULL VALUATIONS					Total Assessed Value as Equalized by the Board of Review	FINAL EQUALIZED VALUE				
		SUBDIVISION	Sec. of Lot	Town or Block	Rag					Number of Acres of Land	LAND Exclusive of Structures and Improvements	BUILDINGS and Other Structures	MACHINERY Permanently Attached to Real Estate	ASSESSED VALUATIONS			TOTAL ASSESSED VALUE			
														RURAL				ALL OTHER	MACHINERY	
Edmund & Mary Knuse		NE 1/4 of NW 1/4 Lot 5	10	14026	44.75	C-1	no	yes	T	480				480	160			160		
"	"	NW 1/4 of NW 1/4 Lot 6			49.75		11		F	600	360			960	320			320		
James J. Mc Bride		SE 1/4 of NE 1/4			40		yes		T	180				180	36			36		
Edward G. & Jennie S. Adams		E 1/2 of SE 1/4 of NW 1/4 Lot 2			17.4		no		T	312	90			402	134			134		
J. C. Hoffmann		S. 300' of N. 400' E. of Hyd. Lot 4					11		T	210				210	70			70		
Frank & Anna Hayward		N. 200' NE 1/4 of NW 1/4 of Unit Lot 4					11		L	45				45	15			15		
		NW 1/4 of NW 1/4																		
		SW 1/4 of NW 1/4																		
		SE 1/4 of NW 1/4																		
		NE 1/4 of SW 1/4																		
		NW 1/4 of SW 1/4																		
		SW 1/4 of SW 1/4																		
		SE 1/4 of SW 1/4																		
		NE 1/4 of SE 1/4																		
		NW 1/4 of SE 1/4																		
		SW 1/4 of SE 1/4																		
		SE 1/4 of SE 1/4																		
					151.90					182.9	450			227.7	36	699		227.7		

Cass County, Minnesota, for Taxes for the Year 1954.

SOLD FOR TAXES	VALUATIONS BY SCHOOL DISTRICTS AS EQUALIZED BY DEPARTMENT OF TAXATION						Tax including State Homestead	State Tax on Non-Homestead	SPECIAL TAXES	TOTAL TAXES	PAID	WHEN PAID	Number of Receipt	March Settlement 1955	June Settlement 1955	Penalty	November Settlement 1955	Penalty	Collections to First Monday in January 1956	Penalty	Delinquent on First Monday in January 1956	Total Delinquent Tax and Penalty	REMARKS	
	District No.	District No.	District No.	District No.	District No.	District No.																		
	Rate	Rate	Rate	Rate	Rate	Rate																		
1																								
2																								
3																								
4																								
5																								
6																								
7																								
8																								
9																								
10																								
11																								
12																								
13																								
14																								
15																								
16																								
17																								
18																								
19																								
20																								

Cooler-Traill Duck Pass Oak Park Beaches Oak Lawn Beach Ray Point

Assessment Roll and Tax List of Real Property in the Town of Thunder Lake of Thunder Lake

*Indicate Type of Property: R-Residential, C-Commercial, I-Industrial, U-Utility, F-Farm

Cass County, Minnesota, for Taxes for the Year 1954.

IN WHOSE NAME ASSESSED	TO WHOM TRANSFERRED	DESCRIPTION OF PROPERTY							TRUE AND FULL VALUATIONS										FINAL EQUALIZED VALUE					
		SUBDIVISION	Sec. or Lot	Town or Block	Rng	Number of Acres of Land	Indicate Homestead Yes or No	Indicate Agricultural Yes or No	Indicate Type of Property	LAND Exclusive of Structures and Improvements			BUILDINGS and Other Structures	MACHINERY Permanently Attached to Real Estate	TOTAL True and Full Value	RURAL				ALL OTHER				
										Dollars	Dollars	Dollars	Dollars	Dollars	Dollars	Dollars	Dollars	Dollars		Dollars	Dollars	Dollars	Dollars	Dollars
Herbert Seiffert State of Minnesota		NE 1/4 of NE 1/4				11 1/2	26	40	2		F		140			140		28				28	140	
State of Minnesota		NW 1/4 of NE 1/4																						
H.B. & Esther F. Seiffert		SW 1/4 of NE 1/4				40		81	11		F	350			350		70					70		
Herbert Seiffert		SE 1/4 of NE 1/4				40			11		F	230			230		46					46		
Herbert & Esther Seiffert L.A. Murphy		NE 1/4 of NW 1/4				40		70			F	161	100		261		87					87		
L.H. & Mary Ann Brandes		NW 1/4 of NW 1/4				40			11		R	420	222		642		294					294		
State of Minnesota		SW 1/4 of NW 1/4																						
H.B. & Esther Seiffert		SE 1/4 of NW 1/4				40					F	220	250		470		194					194		
Ernest W. Long		NE 1/4 of SW 1/4							11		I	211	274		485		97					97		
State of Minnesota		NW 1/4 of SW 1/4																						
State of Minnesota		SW 1/4 of SW 1/4																						
State of Minnesota		SE 1/4 of SW 1/4																						
Edward Tentant		NE 1/4 of SE 1/4				40					F	280			280		56					56		
Ernest W. Long		NW 1/4 of SE 1/4				40					I	140			140		28					28		
State of Minnesota		SW 1/4 of SE 1/4																						
Elizabeth & Martha Seiffert		SE 1/4 of SE 1/4				40					I	240			240		80					80		
							360																	
													2392	1346		3738		517				391		
													140			140		28				28		
													2972			2972		491				491		

SOLD FOR TAXES	VALUATIONS BY SCHOOL DISTRICTS AS EQUALIZED BY DEPARTMENT OF TAXATION						Tax including State Homestead Mills	State Tax on Non-Homestead 5.22 Mills	SPECIAL TAXES	TOTAL TAXES	PAID	WHEN PAID	Number of Receipt	March Settlement 1955	June Settlement 1955	November Settlement 1955	Penalty	Collections to First Monday in January 1956	Penalty	Delinquent on First Monday in January 1956	Total Delinquent Tax and Penalty	REMARKS
	District No.	District No.	District No.	District No.	District No.	District No.																
	Rate	Rate	Rate	Rate	Rate	Rate																
1																						
2																						
3									1414					707								
4									1414					465								
5									930													
6									1758	46				1804								
7									4326	112				4438								
8																						
9									3920					1960								
10																						
11									1960					1960								
12																						
13																						
14																						
15																						
16									1132					574								
17									566					566								
18																						
19									1616	42				1658								
20									17622	200				17822								

Cooler-Trail Duck Pass Oak Park Ranches Oak Lawn Beach 1 Ray Point

Assessment Roll and Tax List of Real Property in the Town of Shawano Lake of Shawano Lake

*Indicate Type of Property: R-Residential, C-Commercial, I-Industrial, U-Utility, F-Farm

Cass County, Minnesota, for Taxes for the Year 1954.

Table with columns: IN WHOSE NAME ASSESSED, TO WHOM TRANSFERRED, DESCRIPTION OF PROPERTY, TRUE AND FULL VALUATIONS, ASSESSED VALUATIONS, VALUATIONS BY SCHOOL DISTRICTS AS EQUALIZED BY DEPARTMENT OF TAXATION, TAXES, PAID, WHEN PAID, Number of Receipt, March Settlement, June Settlement, Penalty, November Settlement, Collections to First Monday in January 1956, Delinquent on First Monday in January 1956, Total Delinquent Tax and Penalty, REMARKS. Rows include property listings for State of Minnesota and Edward Fontaine, with handwritten entries and tax amounts.

Oakley-Trail Duck Pass, Oak Park Beaches, Oak Lawn Beach, Ray Point

Assessment Roll and Tax List of Real Property in the Town of Thunder Lake

*Indicate Type of Property: R-Residential, C-Commercial, I-Industrial, U-Utility, F-Farm

Cass County, Minnesota, for Taxes for the Year 1954.

Table with columns for Assessed Valuations (Rural, All Other, Machinery), Final Equalized Value, and Taxations (School Districts, State, Special, Total). Includes property descriptions, owner names, and tax payment dates.

Vertical text on the right margin: Cooley-Trial Duck Pass, Oak Park Beaches, Oak Lawn Beach, Bay Point

Assessment Roll and Tax List of Real Property in the Town of Shunder Lake
 *Indicate Type of Property: R-Residential, C-Commercial, I-Industrial, U-Utility, F-Farm

IN WHOSE NAME ASSESSED	TO WHOM TRANSFERRED	SUBDIVISION	Sec. or Lot	Town or Block	Rng.	Number of Acres of Land	No. School District	Indicate Homestead	Indicate Agricultural	Indicate Property	TRUE AND FULL VALUATIONS				ASSESSED VALUATIONS						FINAL EQUALIZED VALUE	
											LAND Exclusive of Structures and Improvements	BUILDINGS and Other Structures	MACHINERY Permanently Attached to Real Estate	TOTAL True and Full Value	RURAL		ALL OTHER		MACHINERY Permanently Attached to Real Estate	TOTAL ASSESSED VALUE		Total Assessed Value as Equalized by the Board of Review
															Homestead Up to \$4,000 20%	Over \$4,000 and Non-Homestead 33 1/3%	Homestead Up to \$4,000 25%	Over \$4,000 and Non-Homestead 40%				
Robert J. & Elvera G. Halverson		S 100' of N 877.7' of Lot 4				1540.26	40.75	C-1			580	514	1011					337				
Glady M. Schutz et al		Lot 3 less 71.350'									150	420	570		190			190				
Leslie D. & Juanita M. Tensupson		71.144.5' of Lot 5									280	6.4	894		298			298				
Clifford W. & Hazel C. Thomas		Lot 4 less 200' of 71.297.7' of Lot 4									150		150		50			50				
C. M. Miles		71.130' of S 660' of Lot 5									60	191	201		67			67				
Richard J. Ceaka		S 100' of 71.297.7' of Lot 4									240	148.5	1325	265	265			265				
Gordon W. Sleske		71.200' of Lot 3									99	171	270		90			90				
Charles C. & Bernice & Helen Gust W. Sleske		S 100' of 71.197.7' of Lot 4																				
Alfred M. & Kathryn H. Andersen		S 100' of 71.297.7' of Lot 4																				
Rollin H. Schultz		71.350' of Lot 3 less 71.200'									99	600	699		233			233				
John P. & Dora M. Ruzinski		71.200' of S 460' of Lot 4									60	240	300		100			100				
Sidney P. & Pauline E. Hagen		S 100' of 71.497.7' of Lot 4									45	105	150		50			50				
John & Josephine Wyttenbach		S 100' of 71.697.7' of Lot 4									60	120	180		60			60				
Harry L. Woodruff		71.97.7' of Lot 4																				
John J. & Minnie H. McCuskey		S 100' of 71.797.7' of Lot 4																				

169 50

1743 2007 5950 265 1475

1740

Cass County, Minnesota, for Taxes for the Year 1954.

SOLD FOR TAXES	VALUATIONS BY SCHOOL DISTRICTS AS EQUALIZED BY DEPARTMENT OF TAXATION						Tax Including State Homestead	State Tax on Non-Homestead	SPECIAL TAXES	TOTAL TAXES	PAID	WHEN PAID	Number of Receipt	March Settlement 1955	June Settlement 1955	Penalty	November Settlement 1955	Penalty	Collections to First Monday in January 1956	Penalty	Delinquent on First Monday in January 1956	Total Delinquent Tax and Penalty	REMARKS
	District No.	District Rate	District No.	District Rate	District No.	District Rate																	
	No.	Rate	No.	Rate	No.	Rate																	
	Dollars	Dollars	Dollars	Dollars	Dollars	Dollars																	
1						6812	176		6988	1	PAID IN FULL MAY 31 1955	9453	6988										
2						3940	100		3940	2	PAID IN FULL MAY 31 1955	9458	3940										
3						6022	154		6176	3	PAID IN FULL MAY 31 1955	9458	3000					3176					
4						1010	26		1036	4	PAID IN FULL OCT 21 1955	9458	1036					1036					
5						1354	34		1388	5	PAID IN FULL MAY 31 1955	9445	1388										
6						5356			5356	6	PAID IN FULL JAN 24 1955	135	5356										
7						1818	46		1864	7	PAID IN FULL FEB 28 1955	3146	1864										
10						4710	122		4832	10	PAID IN FULL MAY 31 1955	9447	4832										
11						2022	52		2074	11	PAID IN FULL MAY 31 1955	9454	2074										
12						1010	26		1036	12	PAID IN FULL MAY 31 1955	9451	1036										
15						1212	32		1244	15										1244	1368		

3165
1475
1740

35166 768

35934

7220 23258 4212

1244

Assessment Roll and Tax List of Real Property in the Town of Thunder Lake, Minnesota

*Indicate Type of Property: R-Residential, C-Commercial, I-Industrial, U-Utility, F-Farm

Table with columns: IN WHOSE NAME ASSESSED, TO WHOM TRANSFERRED, DESCRIPTION OF PROPERTY, TRUE AND FULL VALUATIONS, ASSESSED VALUATIONS, FINAL EQUALIZED VALUE.

Cass County, Minnesota, for Taxes for the Year 1954.

Table with columns: VALUATIONS BY SCHOOL DISTRICTS AS EQUALIZED BY DEPARTMENT OF TALLATION, TAXES, PAID, WHEN PAID, Number of Receipt, March Settlement 1955, June Settlement 1955, Penalty, November Settlement 1955, Collections to First Monday in January 1956, Delinquent on First Monday in January 1956, Total Delinquent Tax and Penalty, REMARKS.

Assessment Roll and Tax List of Real Property in the Town of Thunder Lake

*Indicate Type of Property: R-Residential, C-Commercial, I-Industrial, U-Utility, F-Farm

Table with columns: IN WHOSE NAME ASSESSED, TO WHOM TRANSFERRED, DESCRIPTION OF PROPERTY, TRUE AND FULL VALUATIONS, ASSESSED VALUATIONS, and FINAL EQUALIZED VALUE.

Cass County, Minnesota, for Taxes for the Year 1954.

Table with columns: SOLD FOR TAXES, VALUATIONS BY SCHOOL DISTRICTS AS EQUALIZED BY DEPARTMENT OF TAXATION, Tax including State Homestead, SPECIAL TAXES, TOTAL TAXES, PAID, WHEN PAID, Number of Receipt, March Settlement 1955, June Settlement 1955, November Settlement 1955, Collections to First Monday in January 1956, Delinquent on First Monday in January 1956, Total Delinquent Tax and Penalty, REMARKS.

Handwritten summary calculations at the bottom of the left page, including totals for assessed values and taxes.

Vertical text on the right edge of the page: Cooley-Trail Duck Pass, Oak Park Beaches, Oak Farm Beach, Ray Point.

Assessment Roll and Tax List of Real Property in the Town of Shusku Lake

*Indicate Type of Property: R-Residential, C-Commercial, I-Industrial, U-Utility, F-Farm

Table with columns: IN WHOSE NAME ASSESSED, TO WHOM TRANSFERRED, SUBDIVISION, TRUE AND FULL VALUATIONS, ASSESSED VALUATIONS, FINAL EQUALIZED VALUE.

Handwritten calculations and notes at the bottom of the page, including a large sum: 3607 - 1166 = 2441.

Cass County, Minnesota, for Taxes for the Year 1954.

Table with columns: VALUATIONS BY SCHOOL DISTRICTS AS EQUALIZED BY DEPARTMENT OF TAXATION, TAX INCLUDING STATE HOMESTEAD, SPECIAL TAXES, TOTAL TAXES, PAID, WHEN PAID, Number of Receipt, March Settlement 1955, June Settlement 1955, Penalty, November Settlement 1955, Penalty, Collections to First Monday in January 1956, Delinquent on First Monday in January 1956, Total Delinquent Tax and Penalty, REMARKS.

Handwritten calculations and notes at the bottom of the second page, including a large sum: 11902 + 260 = 12162.

Assessment Roll and Tax List of Real Property in the Town of Thunder Lake,
*Indicate Type of Property: R-Residential, C-Commercial, I-Industrial, U-Utility, F-Farm

IN WHOSE NAME ASSESSED	TO WHOM TRANSFERRED	DESCRIPTION OF PROPERTY				No. School District	Indicate Homestead Yes or No	Indicate Agricultural Yes or No	* Indicate Type of Property	TRUE AND FULL VALUATIONS				ASSESSED VALUATIONS					FINAL EQUALIZED VALUE			
		SUBDIVISION	Sec. or Lot	Town or Block	Reg. Acres					Number of Acres of Land	LAND Exclusive of Structures and Improvements	BUILDINGS and Other Structures	MACHINERY Permanently Attached to Real Estate	TOTAL True and Full Value	RURAL		ALL OTHER			MACHINERY Permanently Attached to Real Estate	TOTAL ASSESSED VALUE	Total Assessed Value as Equalized by the Board of Review
															Acres	10ths	Homestead Up to \$1,000 20%	Over \$4,000 and Non-Homestead 33 1/3%				
State of Minnesota		1	NE 1/4 of NE 1/4		20 140.26			C-1														
State of Minnesota		2	NW 1/4 of NE 1/4																			
State of Minnesota		3	SW 1/4 of NE 1/4																			
State of Minnesota		4	SE 1/4 of NE 1/4																			
		5																				
State of Minnesota		6	NE 1/4 of NW 1/4																			
State of Minnesota		7	NW 1/4 of NW 1/4																			
State of Minnesota		8	SW 1/4 of NW 1/4																			
State of Minnesota		9	SE 1/4 of NW 1/4																			
		10																				
State of Minnesota		11	NE 1/4 of SW 1/4																			
State of Minnesota		12	NW 1/4 of SW 1/4																			
State of Minnesota		13	SW 1/4 of SW 1/4																			
State of Minnesota		14	SE 1/4 of SW 1/4																			
		15																				
State of Minnesota		16	NE 1/4 of SE 1/4																			
State of Minnesota		17	NW 1/4 of SE 1/4																			
State of Minnesota		18	SW 1/4 of SE 1/4																			
State of Minnesota		19	SE 1/4 of SE 1/4																			
		20																				

Cass County, Minnesota, for Taxes for the Year 1954.

SOLD FOR TAXES	VALUATIONS BY SCHOOL DISTRICTS AS EQUALIZED BY DEPARTMENT OF TAXATION						Tax including State Homestead	State Tax on Non-Homestead	SPECIAL TAXES	TOTAL TAXES	PAID	WHEN PAID	Number of Receipt	March Settlement 1955	June Settlement 1955	Penalty	November Settlement 1955	Penalty	Collections to First Monday in January 1956	Penalty	Delinquent on First Monday in January 1956	Total Delinquent Tax and Penalty	REMARKS
	District No.	District No.	District No.	District No.	District No.	District No.																	
	Rate	Rate	Rate	Rate	Rate	Rate																	
1																							
2																							
3																							
4																							
5																							
6																							
7																							
8																							
9																							
10																							
11																							
12																							
13																							
14																							
15																							
16																							
17																							
18																							
19																							
20																							

Coolley-Traill Duck Pass
Oak Park Beaches
Oak Lawn Beach
Ray Point Park

Assessment Roll and Tax List of Real Property in the Town of Thunder Lake

*Indicate Type of Property: R-Residential, C-Commercial, I-Industrial, U-Utility, F-Farm

Table with columns: IN WHOSE NAME ASSESSED, TO WHOM TRANSFERRED, SUBDIVISION, TRUE AND FULL VALUATIONS, ASSESSED VALUATIONS, and FINAL EQUALIZED VALUE.

Cass County, Minnesota, for Taxes for the Year 1954.

Table with columns: VALUATIONS BY SCHOOL DISTRICTS AS EQUALIZED BY DEPARTMENT OF TAXATION, TAX INCLUDING STATE HOMESTEAD, STATE TAX ON NON-HOMESTEAD, SPECIAL TAXES, TOTAL TAXES, PAID, WHEN PAID, Number of Receipt, March Settlement 1955, June Settlement 1955, Penalty, November Settlement 1955, Penalty, Collections to First Monday in January 1956, Penalty, Delinquent on First Monday in January 1956, Total Delinquent Tax and Penalty, REMARKS.

Cooley-Treadl Duck Pass Oak Park Reaches Oak Lawn Beach Ray Point

Assessment Roll and Tax List of Real Property in the Town of Thunder Lake

Table with columns: IN WHOSE NAME ASSESSED, TO WHOM TRANSFERRED, DESCRIPTION OF PROPERTY, TRUE AND FULL VALUATIONS, ASSESSED VALUATIONS, and FINAL EQUALIZED VALUE.

Cass County, Minnesota, for Taxes for the Year 1954.

Table with columns: SOLD FOR TAXES, VALUATIONS BY SCHOOL DISTRICTS AS EQUALIZED BY DEPARTMENT OF TAXATION, Tax including State Homestead, State Tax on Non-Homestead, SPECIAL TAXES, TOTAL TAXES, PAID, WHEN PAID, Number of Receipt, March Settlement 1955, June Settlement 1955, Penalty, November Settlement 1955, Penalty, Collections to First Monday in January 1956, Penalty, Delinquent on First Monday in January 1956, Total Delinquent Tax and Penalty, REMARKS.

Assessment Roll and Tax List of Real Property in the Town of Thunder Lake

Indicate Type of Property: R-Residential, C-Commercial, I-Industrial, U-Utility, F-Farm

Table with columns: IN WHOSE NAME ASSESSED, TO WHOM TRANSFERRED, DESCRIPTION OF PROPERTY, TRUE AND FULL VALUATIONS (LAND, BUILDINGS, MACHINERY, TOTAL), ASSESSED VALUATIONS (RURAL, ALL OTHER, MACHINERY, TOTAL ASSESSED), FINAL EQUALIZED VALUE.

Handwritten summary at bottom left: 23 7/8, 635, 1232, 1867, 125, 414, 539

Cass County, Minnesota, for Taxes for the Year 1954.

Table with columns: SOLD FOR TAXES, VALUATIONS BY SCHOOL DISTRICTS AS EQUALIZED BY DEPARTMENT OF TAXATION, Tax Including State Homestead, State Tax on Non-Homestead, SPECIAL TAXES, TOTAL TAXES, PAID, WHEN PAID, Number of Receipt, March Settlement 1955, June Settlement 1955, November Settlement 1955, Collections to First Monday in January 1956, Delinquent on First Monday in January 1956, Total Delinquent Tax and Penalty, REMARKS.

Handwritten summary at bottom right: 414, 125, 539, 2838, 8366, 218, 11204

Vertical text on the far right edge of the page: Tooley-Hall Duck Pass, Oak Park Beaches, Oak Lawn Beach, Ray Point

Assessment Roll and Tax List of Real Property in the town of Thunder Lake,
*Indicate Type of Property: R-Residential, C-Commercial, I-Industrial, U-Utility, F-Farm

Cass County, Minnesota, for Taxes for the Year 1954.

IN WHOSE NAME ASSESSED	TO WHOM TRANSFERRED	SUBDIVISION	Number of Acres of Land		No. School District	Indicate Homestead Yes or No	Indicate Agricultural Yes or No	a Indicate Type of Property	TRUE AND FULL VALUATIONS				ASSESSED VALUATIONS					FINAL EQUALIZED VALUE	SOLD FOR TAXES	VALUATIONS BY SCHOOL DISTRICTS AS EQUALIZED BY DEPARTMENT OF TAXATION						Tax Including State Homestead	State Tax on Non-Homestead	SPECIAL TAXES	TOTAL TAXES	PAID	WHEN PAID	Number of Receipt	March Settlement 1955	June Settlement 1955	Penalty	November Settlement 1955	Penalty	Collections to First Monday in January 1956	Penalty	Delinquent on First Monday in January 1956	Total Delinquent Tax and Penalty	REMARKS
			Dollars	Dollars					Dollars	Dollars	Homestead Up to \$4,000 20%	Over \$4,000 and Non-Homestead 33 1/3%	Homestead Up to \$4,000 25%	Over \$4,000 and Non-Homestead 40%	MACHINERY Permanently Attached to Real Estate 33 1/3%	TOTAL ASSESSED VALUE	Total Assessed Value as Equalized by the Board of Review			District No. Rate	District No. Rate	District No. Rate	District No. Rate	District No. Rate	District No. Rate																	
State of Minnesota		NE 1/4 of NE 1/4		23 1/4 26																																						
State of Minnesota		NW 1/4 of NE 1/4																																								
Jena Mining Co.		SW 1/4 of NE 1/4		40		no		T	321		107			107												2nd Half Paid OCT 31 1955						1109		1109								
		SE 1/4 of NE 1/4		40		no		T	330		110			110												1st Half Paid MAY 31 1955						1141		1141								
State of Minnesota		NE 1/4 of NW 1/4																																								
State of Minnesota		NW 1/4 of NW 1/4																																								
State of Minnesota		SW 1/4 of NW 1/4																																								
State of Minnesota		SE 1/4 of NW 1/4																																								
State of Minnesota		NE 1/4 of SW 1/4																																								
State of Minnesota		NW 1/4 of SW 1/4																																								
State of Minnesota		SW 1/4 of SW 1/4																																								
State of Minnesota		SE 1/4 of SW 1/4																																								
Jena Mining Co.		NE 1/4 of SE 1/4		40		no		T	321		107			107												2nd Half Paid OCT 31 1955						1109		1109								
State of Minnesota		NW 1/4 of SE 1/4																																								
State of Minnesota		SW 1/4 of SE 1/4																																								
State of Minnesota		SE 1/4 of SE 1/4																																								
				120					972		324			324																												

Coolley-Trail Duck Pass
Oak Park Beaches
Oak Lawn Beach
Ray Point

Assessment Roll and Tax List of Real Property in the Town of Thunder Lake, Cass County, Minnesota, for Taxes for the Year 1954.

Table with columns for 'IN WHOSE NAME ASSESSED', 'TO WHOM TRANSFERRED', 'DESCRIPTION OF PROPERTY', 'TRUE AND FULL VALUATIONS', 'ASSESSED VALUATIONS', 'VALUATIONS BY SCHOOL DISTRICTS AS EQUALIZED BY DEPARTMENT OF TAXATION', 'SOLD FOR TAXES', 'PAID', 'WHEN PAID', 'Number of Receipt', 'March Settlement 1955', 'June Settlement 1955', 'Penalty', 'November Settlement 1955', 'Penalty', 'Collections to First Monday in January 1956', 'Penalty', 'Delinquent on First Monday in January 1956', 'Total Delinquent Tax and Penalty', and 'REMARKS'.

Cooley-Trail Duck Pass
Oak Park Beaches
Oak Lawn Beach
Ray Point

Assessment Roll and Tax List of Real Property in the Town of Thunder Lake

* Indicate Type of Property: R-Residential, C-Commercial, I-Industrial, U-Utility, F-Farm

Cass County, Minnesota, for Taxes for the Year 1954.

Table with columns: IN WHOSE NAME ASSESSED, TO WHOM TRANSFERRED, DESCRIPTION OF PROPERTY, TRUE AND FULL VALUATIONS, ASSESSED VALUATIONS, VALUATIONS BY SCHOOL DISTRICTS AS EQUALIZED BY DEPARTMENT OF TAXATION, TAX INCLUDING STATE HOMESTEAD, SPECIAL TAXES, TOTAL TAXES, PAID, WHEN PAID, Number of Receipt, March Settlement 1955, June Settlement 1955, Penalty, November Settlement 1955, Collections to First Monday in January 1956, Delinquent on First Monday in January 1956, Total Delinquent Tax and Penalty, REMARKS.

(Continued on next page)

Cooley-Trail Duck Pass, Oak Park Beaches, Oak Lawn Beach, Ray Point

Assessment Roll and Tax List of Cass County, Minnesota, for Taxes for the Year 1954.

Table with columns: IN WHOSE NAME ASSESSED, TO WHOM TRANSFERRED, DESCRIPTION OF PROPERTY, ASSESSED VALUATIONS (ALL OTHER, Homestead, Over \$5,000, Machinery, TOTAL ASSESSED VALUE, Total Assessed Value as Equivalized), FINAL EQUALIZED VALUE. Includes handwritten entries for Electra Thrall, Alta B. Vase, Clyde C. Hollander, etc.

Cass County, Minnesota, for Taxes for the Year 1954.

Table with columns: SOLD FOR TAXES, VALUATIONS BY SCHOOL DISTRICTS AS EQUALIZED BY DEPARTMENT OF TAXATION (District No., Rate, etc.), Tax including State Homestead, State Tax on Non-Homestead, SPECIAL TAXES, TOTAL TAXES, PAID, WHEN PAID, Number of Receipt, March Settlement, June Settlement, Penalty, November Settlement, Penalty, Collections to First Monday in January 1955, Delinquent on First Monday in January 1956, Total Delinquent Tax and Penalty, REMARKS. Includes handwritten entries for 1-20.

Vertical text on the right edge of the page: Coolley-Trail Duck Pass, Oak Park Patches, Oak Lawn Beach, Ray Point.

Assessment Roll and Tax List of Real Property in the Town of St. Cloud of Humboldt Co., Minnesota

*Indicate Type of Property: R-Residential, C-Commercial, I-Industrial, U-Utility, F-Farm

Table with columns: IN WHOSE NAME ASSESSED, TO WHOM TRANSFERRED, DESCRIPTION OF PROPERTY, TRUE AND FULL VALUATIONS, ASSESSED VALUATIONS, TOTAL ASSESSED VALUE, FINAL EQUALIZED VALUE. Includes entries for Electra Thrall, Alta E. Vase, Clyde C. Holder, Agnes C. Knudson, Andrew & Lillian G. Danielson, Erna L. Swanson, S. O. Severson, Willis & Alta H. Copeman, J. C. White, Walter H. Martenson.

Cass County, Minnesota, for Taxes for the Year 1954.

Table with columns: SOLD FOR TAXES, VALUATIONS BY SCHOOL DISTRICTS AS EQUALIZED BY DEPARTMENT OF TAXATION, Tax including State Homestead, State Tax on Non-Homestead, SPECIAL TAXES, TOTAL TAXES, PAID, WHEN PAID, Number of Receipts, March Settlement 1955, June Settlement 1955, November Settlement 1955, Collections to First Monday in January 1956, Delinquent on First Monday in January 1956, Total Delinquent Tax and Penalty, REMARKS. Includes entries for 1 through 20, with handwritten notes and calculations.

Assessment Roll and Tax List of Real Property in the Town of Shumler Lake, Minnesota
*Indicate Type of Property: R-Residential, C-Commercial, I-Industrial, U-Utility, F-Farm

Table with columns: IN WHOSE NAME ASSESSED, TO WHOM TRANSFERRED, DESCRIPTION OF PROPERTY, TRUE AND FULL VALUATIONS, ASSESSED VALUATIONS, VALUATIONS BY SCHOOL DISTRICTS AS EQUALIZED BY DEPARTMENT OF TAXATION, TAX INCLUDING STATE HOMESTEAD, SPECIAL TAXES, TOTAL TAXES, PAID, WHEN PAID, Number of Receipt, March Settlement 1955, June Settlement 1955, Penalty, November Settlement 1955, Penalty, Collections to First Monday in January 1956, Penalty, Delinquent on First Monday in January 1956, Total Delinquent Tax and Penalty, REMARKS. Includes entries for C.H. Thomas, Ernest A. Swanson, Frank & Ruby Graham, and Max B. & Helen C. Allen.

Assessment Roll and Tax List of Real Property in the Town of Thunder Lake, Cass County, Minnesota, for Taxes for the Year 1954.

Table with columns for 'IN WHOSE NAME ASSESSED', 'TO WHOM TRANSFERRED', 'DESCRIPTION OF PROPERTY', 'TRUE AND FULL VALUATIONS', 'ASSESSED VALUATIONS', 'FINAL EQUALIZED VALUE', 'SOLD FOR TAXES', 'VALUATIONS BY SCHOOL DISTRICTS', 'TAXES', 'PAID', 'WHEN PAID', 'Number of Receipt', 'March Settlement 1955', 'June Settlement 1955', 'Penalty', 'November Settlement 1955', 'Penalty', 'Collections to First Monday in January 1956', 'Penalty', 'Delinquent on First Monday in January 1956', 'Total Delinquent Tax and Penalty', and 'REMARKS'. Includes handwritten entries for Joseph B. Leamas Thompson Lumber Co. and various lot descriptions.

Assessment Roll and Tax List of Real Property in the *Town of Shuanda Lake*

*Indicate Type of Property: R-Residential, C-Commercial, I-Industrial, U-Utility, F-Farm

Cass County, Minnesota, for Taxes for the Year 1954.

Table with columns for IN WHOSE NAME ASSESSED, TO WHOM TRANSFERRED, DESCRIPTION OF PROPERTY, TRUE AND FULL VALUATIONS, ASSESSED VALUATIONS, VALUATIONS BY SCHOOL DISTRICTS AS EQUALIZED BY DEPARTMENT OF TAXATION, TAXES, PAID, WHEN PAID, Number of Receipt, March Settlement 1955, June Settlement 1955, Penalty, November Settlement 1955, Penalty, Collections to First Monday in January 1956, Penalty, Delinquent on First Monday in January 1956, Total Delinquent Tax and Penalty, REMARKS.

Cooley-Trail Duck Pass, Oak Park Beaches, Oak Lawn Beach, Ray Point

Assessment Roll and Tax List of Real Property in the Town of Thunder Lake, Cass County, Minnesota, for Taxes for the Year 1954.

*Indicate Type of Property: R-Residential, C-Commercial, I-Industrial, U-Utility, F-Farm

Table with columns: IN WHOSE NAME ASSESSED, TO WHOM TRANSFERRED, DESCRIPTION OF PROPERTY, TRUE AND FULL VALUATIONS, ASSESSED VALUATIONS, VALUATIONS BY SCHOOL DISTRICTS AS EQUALIZED BY DEPARTMENT OF TAXATION, TAXES, PAID, WHEN PAID, Number of Receipt, March Settlement 1955, June Settlement 1955, November Settlement 1955, Penalty, Collections to First Monday in January 1956, Delinquent on First Monday in January 1956, Total Delinquent Tax and Penalty, REMARKS.

Assessment Roll and Tax List of Real Property in the Town of Thunder Lake, Cass County, Minnesota, for Taxes for the Year 1954.

*Indicate Type of Property: R-Residential, C-Commercial, I-Industrial, U-Utility, F-Farm

Table with columns: INJ/HOSE NAME ASSESSED, TO WHOM TRANSFERRED, DESCRIPTION OF PROPERTY, TRUE AND FULL VALUATIONS, ASSESSED VALUATIONS, VALUATIONS BY SCHOOL DISTRICTS AS EQUALIZED BY DEPARTMENT OF TAXATION, TAXES, PAID, WHEN PAID, Number of Receipt, March Settlement 1955, June Settlement 1955, Penalty, November Settlement 1955, Penalty, Collections to First Monday in January 1956, Penalty, Delinquent on First Monday in January 1956, Total Delinquent Tax and Penalty, REMARKS.

Cooley-Trail Duck Pass Oak Park Beaches Oak Lawn Beach Ray Point

Assessment Roll and Tax List of Real Property in the _____ of _____,
*Indicate Type of Property: R-Residential, C-Commercial, I-Industrial, U-Utility, F-Farm

Table with columns: IN WHOSE NAME ASSESSED, TO WHOM TRANSFERRED, DESCRIPTION OF PROPERTY, TRUE AND FULL VALUATIONS, ASSESSED VALUATIONS, FINAL EQUALIZED VALUE. Includes sub-headers for Rural and All Other valuations.

Cass County, Minnesota, for Taxes for the Year 1954.

Table with columns: SOLD FOR TAXES, VALUATIONS BY SCHOOL DISTRICTS AS EQUALIZED BY DEPARTMENT OF TAXATION, Tax including State Homestead, State Tax on Non-Homestead, SPECIAL TAXES, TOTAL TAXES, PAID, WHEN PAID, Number of Receipt, March Settlement 1955, June Settlement 1955, Penalty, November Settlement 1955, Penalty, Collections to First Monday in January 1956, Penalty, Delinquent on First Monday in January 1956, Total Delinquent Tax and Penalty, REMARKS.

Coolley-Trail Duck Pass
Oak Park Beaches
Oak Lawn Beach
Ray Point

Assessment Roll and Tax List of Real Property in the Town of Thunder Lake, Cass County, Minnesota, for Taxes for the Year 1954.

*Indicate Type of Property: R-Residential, C-Commercial, I-Industrial, U-Utility, F-Farm

Table with columns: IN WHOSE NAME ASSESSED, TO WHOM TRANSFERRED, SUBDIVISION, DESCRIPTION OF PROPERTY, TRUE AND FULL VALUATIONS, ASSESSED VALUATIONS, FINAL EQUALIZED VALUE.

Cass County, Minnesota, for Taxes for the Year 1954.

Table with columns: SOLD FOR TAXES, VALUATIONS BY SCHOOL DISTRICTS AS EQUALIZED BY DEPARTMENT OF TAXATION, Tax Including State Homestead, State Tax on Non-Homestead, SPECIAL TAXES, TOTAL TAXES, PAID, WHEN PAID, Number of Receipt, March Settlement 1955, June Settlement 1955, November Settlement 1955, Collections to First Monday in January 1956, Delinquent on First Monday in January 1956, Total Delinquent Tax and Penalty, REMARKS.

Cooley Trail-Duck Pass, Oak Park Beaches

1st Arlin to Birch, Terrace, Oak Lawn Beach, Ray Point

Assessment Roll and Tax List of Real Property in the Town of Thunder Lake, of Thunder Lake, Minnesota.
*Indicate Type of Property: R-Residential, C-Commercial, I-Industrial, U-Utility, F-Farm

IN WHOSE NAME ASSESSED	TO WHOM TRANSFERRED	DESCRIPTION OF PROPERTY				No. School District	Indicate Homestead Yes or No	Indicate Agricultural Yes or No	Indicate Type of Property	TRUE AND FULL VALUATIONS			ASSESSED VALUATIONS					Total Assessed Value as Equalized by the Board of Review	FINAL EQUALIZED VALUE	
		SUBDIVISION	Sec. or Lot	Town or Block	Rog					Number of Acres of Land	LAND Exclusive of Structures and Improvements	BUILDINGS and Other Structures	MACHINERY Permanently Attached to Real Estate	RURAL		MACHINERY Permanently Attached to Real Estate	TOTAL ASSESSED VALUE			
														Acres	100ths					Homestead Up to \$4,000 20%
Charles A. Graham & Ada Graham		Oak Park Beaches	1	2		C-1	N	70	L		30	105			135	45		45		
"	"	"	2			"	"	"	L		30				30	10		10		
"	"	"	3			"	"	"	L		30				30	10		10		
"	"	"	4			"	"	"	L		30				30	10		10		
"	"	"	5			"	"	"	L		30				30	10		10		
"	"	"	6			"	"	"	L		30				30	10		10		
"	"	"	7			"	"	"	L		30				30	10		10		
"	"	"	8			"	"	"	L		30				30	10		10		
Le Roy O. Moore		"	9			"	"	"	L		30	90			120	40		40		
"	"	"	10			"	"	"	L		30				30	10		10		
W. C. Cooper		"	11			"	"	"	L		30				30	10		10		
Charles A. Graham & Ada Graham		"	12			"	"	"	L		30				30	10		10		
State of Minnesota		Outlet A	13																	
			14																	
			15																	
			16																	
			17																	
			18																	
			19																	
			20																	
											360	195			555	185		185		

Cass County, Minnesota, for Taxes for the Year 1954.

SOLD FOR TAXES	VALUATIONS BY SCHOOL DISTRICTS AS EQUALIZED BY DEPARTMENT OF TAXATION						Tax including State Homestead	State Tax on Non-Homestead	SPECIAL TAXES	TOTAL TAXES	PAID	WHEN PAID	Number of Receipt	March Settlement 1955	June Settlement 1955	Penalty	November Settlement 1955	Penalty	Collections to First Monday in January 1956	Penalty	Delinquent on First Monday in January 1956	Total Delinquent Tax and Penalty	REMARKS	
	District No.	District No.	District No.	District No.	District No.	District No.																		
	Rate	Rate	Rate	Rate	Rate	Rate																		
1																								
2																								
3																								
4																								
5																								
6																								
7																								
8																								
9																								
10																								
11																								
12																								
13																								
14																								
15																								
16																								
17																								
18																								
19																								
20																								
											185	4210	104		4314									

Cooley Trail-Duck Pass

Oak Park Beaches

1st Add'n to District

Torrance

Oak Lawn Beach

Ray Point

Assessment Roll and Tax List of Real Property in the Town of Thunder Lake, Cass County, Minnesota, for Taxes for the Year 1954.

*Indicate Type of Property: R-Residential, C-Commercial, I-Industrial, U-Utility, F-Farm

Table with columns: IN WHOSE NAME ASSESSED, TO WHOM TRANSFERRED, SUBDIVISION, TRUE AND FULL VALUATIONS, ASSESSED VALUATIONS, VALUATIONS BY SCHOOL DISTRICTS AS EQUALIZED BY DEPARTMENT OF TAXATION, TAXES, PAID, WHEN PAID, Number of Receipt, March Settlement 1955, June Settlement 1955, November Settlement 1955, Collections to First Monday in January 1956, Delinquent on First Monday in January 1956, Total Delinquent Tax and Penalty, REMARKS.

Cooley Trail-Duck Pass

Oak Park Beaches

Oak Lawn Beach

1st Adm to Birchwood Terrace

1st Ray Point

Assessment Roll and Tax List of Real Property in the Town of Thunder Lake, Cass County, Minnesota, for Taxes for the Year 1954.

Table with columns: IN WHOSE NAME ASSESSED, TO WHOM TRANSFERRED, SUBDIVISION, DESCRIPTION OF PROPERTY, TRUE AND FULL VALUATIONS, ASSESSED VALUATIONS, VALUATIONS BY SCHOOL DISTRICTS AS EQUALIZED BY DEPARTMENT OF TAXATION, TAX INCLUDING STATE HOMESTEAD, SPECIAL TAXES, TOTAL TAXES, PAID, WHEN PAID, Number of Receipt, March Settlement 1955, June Settlement 1955, Penalty, November Settlement 1955, Penalty, Collections to First Monday in January 1956, Penalty, Delinquent on First Monday in January 1956, Total Delinquent Tax and Penalty, REMARKS.

Cooley Trail-Duck Pags

Oak Park Beaches

Del Ray Beach

1st Add'n to Birchwood Terrace

Del Ray Point

Assessment Roll and Tax List of Real Property in the Town of Thunder Lake, Cass County, Minnesota, for Taxes for the Year 1954.

*Indicate Type of Property: R-Residential, C-Commercial, I-Industrial, U-Utility, F-Farm

Table with columns: IN WHOSE NAME ASSESSED, TO WHOM TRANSFERRED, SUBDIVISION, DESCRIPTION OF PROPERTY, TRUE AND FULL VALUATIONS (LAND, BUILDINGS, MACHINERY, TOTAL), ASSESSED VALUATIONS (RURAL, ALL OTHER, MACHINERY, TOTAL ASSESSED VALUE), FINAL EQUALIZED VALUE.

Table with columns: VALUATIONS BY SCHOOL DISTRICTS AS EQUALIZED BY DEPARTMENT OF TAXATION, Tax Including State Homestead, State Tax on Non-Homestead, SPECIAL TAXES, TOTAL TAXES, PAID, WHEN PAID, Number of Receipt, March Settlement 1955, June Settlement 1955, Penalty, November Settlement 1955, Collections to First Monday in January 1956, Delinquent on First Monday in January 1956, Total Delinquent Tax and Penalty, REMARKS.

Coolley Trail-Duck Pass, Oak Park Beaches, Oak Park Beach, Bay Point, P.F.6

1st Add'n to Birchwood Terrace

