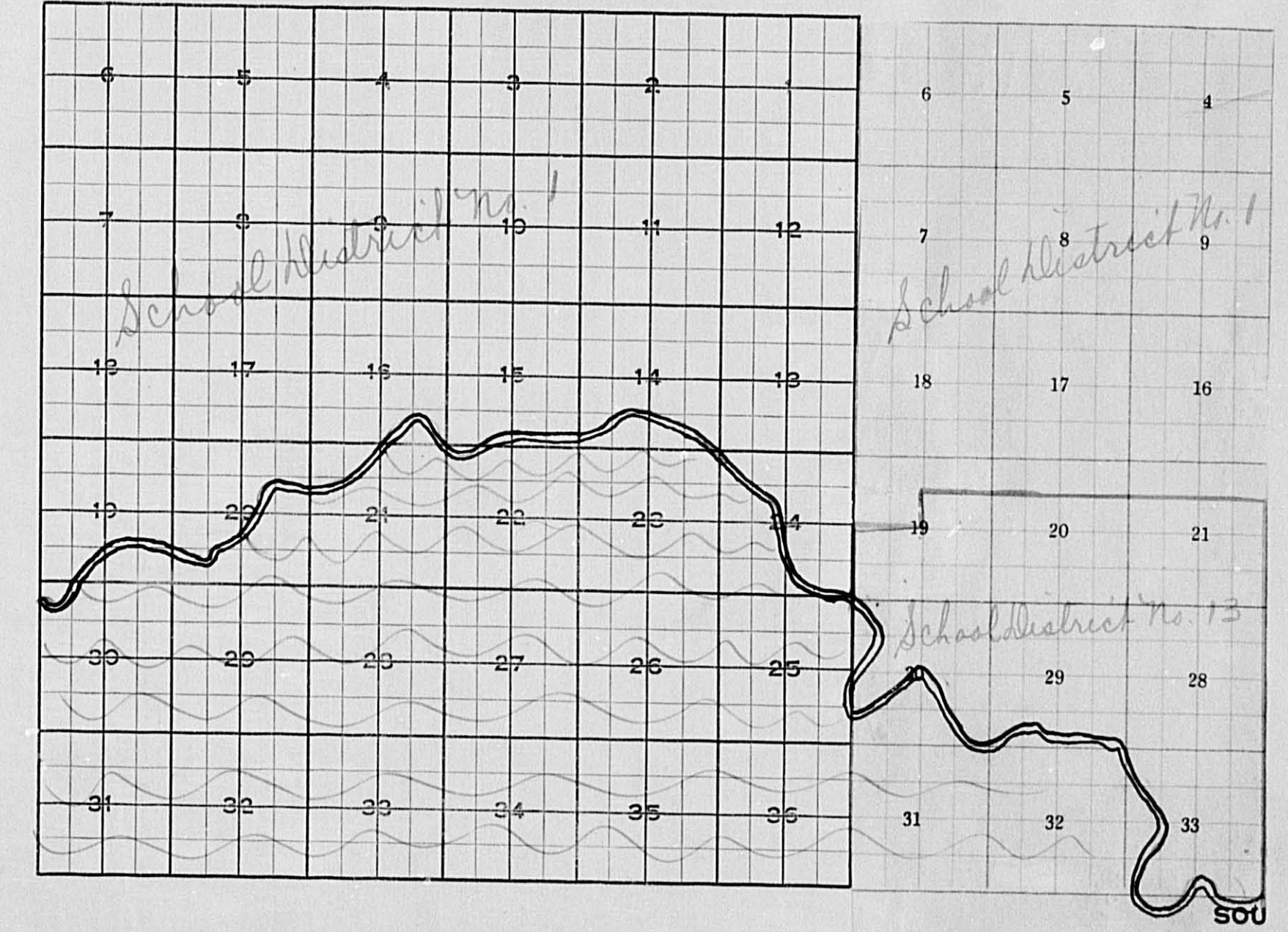


INDEX TO SECTIONS

SECTION	PAGE
Section 1.....	
" 2.....	
" 3.....	
" 4.....	
" 5.....	
" 6.....	
" 7.....	
" 8.....	
" 9.....	
" 10.....	
" 11.....	
" 12.....	
" 13.....	
" 14.....	
" 15.....	
" 16.....	
" 17.....	
" 18.....	
" 19.....	
" 20.....	
" 21.....	
" 22.....	
" 23.....	
" 24.....	
" 25.....	
" 26.....	
" 27.....	
" 28.....	
" 29.....	
" 30.....	
" 31.....	
" 32.....	
" 33.....	
" 34.....	
" 35.....	
" 36.....	

For Convenience of Auditor in Showing Boundaries of School Districts

Township No. 133 Range No. 29-30 Mer. P. M.



REAL

PLATTED

PERSONAL

Assessor's Return of Taxable Real Property in the Town of Sylvan

Unplatted Real Estate—Assessed at 33 1/3 per cent of True and Full Value.

SYLVAN TWP.
County Board Changes: Sylvan 41
for the Year 1926.

NAME OF OWNER	No. of School Dist.	DESCRIPTION	Sec. or Lot	Twp. or Block	Range	Number of Acres		True and Full Value of Lands Exclusive of Structures and Improvements Dollars	STREETS	29% Inc. on Lands	EQUALIZED VALUATIONS			
						Acres	100ths				Assessed Value as Equalized by Board of Review Dollars	Assessed Value as Equalized by the County Board Dollars	Assessed Value as Equalized by the Minnesota Tax Commission Dollars	
Virgel J. Taylor	#1	NE 1/4 of NE 1/4 Lot 1	4	133	29	37	45	484						
Geo. B. Anderson	"	NW 1/4 of NE 1/4 " 2				37	15	372						
L. J. Anderson	"	SW 1/4 of NE 1/4 less 8.9 Acres				31	10	405						
Virgel J. Taylor	"	SE 1/4 of NE 1/4				40		497						
Peter Staub	#13	Lot 1 Sec. 4. & Lot 1	5	132	29	54	74	714						
M. J. Lynch	#1	Lot 3 NE 1/4 of NW 1/4	4	133	29	68	45	719	1300	2017	413			
"	"	" 4 NW 1/4 of NW 1/4												
"	"	SW 1/4 of NW 1/4												
"	"	SE 1/4 of NW 1/4												
Minn. Power & Light Co.	"	8.9 A. of SW 1/4 NE 1/4				8	90	96		124	32			
L. J. Anderson	"	NE 1/4 of SW 1/4				40		380		124	96			
Minn. Power & Light Co.	"	NW 1/4 of SW 1/4				40		402		426	110			
"	"	SW 1/4 of SW 1/4				40		402		402	134			
L. J. Anderson	"	SE 1/4 of SW 1/4				40		402		402	134			
"	"					40		480		480	160			
W. S. Jones	#1	NE 1/4 of SE 1/4				40		402		402	134			
L. J. Anderson	"	NW 1/4 of SE 1/4				40		390	600	990	330			
W. S. Jones	"	SW 1/4 of SE 1/4				40		402		402	134			
"	"	SE 1/4 of SE 1/4				40		402		402	134			
Minn. Power & Light Co.	"	That part of Lots 3 & 4 of the SW 1/4 of NW 1/4 described by metes & bounds in that certain deed from Matthew B. Lynch & wife to Minn. Power & Light Co. dated Jan. 8, 1926, Recorded on —, in Book — of Deeds on page —	4	133	29	64	45	774		774	268			
						662	24	7162	4460	14622	3874			

PLATTED

PERSONAL

Assessor's Return of Taxable Real Property in the Town of Siguan
 Unplatted Real Estate—Assessed at 33 1/3 per cent of True and Full Value.

the Year 1926.

MADE IN ST. CLOUD BY THE FRITZ-CROSS CO.

NAME OF OWNER	No. of School Dist.	DESCRIPTION	Sec. or Lot	Twp. or Block	Range	Number of Acres	ASSESSOR'S VALUATIONS				EQUALIZED VALUATIONS		
							True and Full Value of Land Exclusive of Structures and Improvements Dollars	STRUCTURES AND IMPROVEMENTS True and Full Value of Buildings and Other Structures Dollars	True and Full Value of Machinery Permanently Attached to Real Estate Dollars	Total True and Full Value of Land Including all Structures, Improvements and Machinery Dollars	Assessed Value of Land Including all Structures, Improvements and Machinery Dollars	Assessed Value as Equalized by Board of Review Dollars	Assessed Value as Equalized by the County Board Dollars
Virgel J. Taylor	#1	NE 1/4 of NE 1/4 Lot 1	4	133	29	37.45	375			375	125		161
Geo. B. Anderson	"	NW 1/4 of NE 1/4 " 2				37.15	372	360		732	244		280
L. J. Anderson	"	SW 1/4 of NE 1/4 less 8.9 acres				31.10	405			405	135		174
Virgel J. Taylor	"	SE 1/4 of NE 1/4				40	497	1000		1497	499		547
Peter Staub	#13	Lot 1 Sec. 4 & Lot 1	5	132	29	54.74	717	1200		1917	638		707
M. J. Lynch	#1	Lot 3 NE 1/4 of NW 1/4 Less 64.45 A.	4	133	29	68.45	719	1300		2019	673		743
"	"	" 4 NW 1/4 of NW 1/4 to Minn. & Light Co.											
"	"	SW 1/4 of NW 1/4											
"	"	SE 1/4 of NW 1/4											
Minn. Power & Light Co.	"	8.9 A. of SW 1/4 NE 1/4				8.90	96			96	32		41
L. J. Anderson	"	NE 1/4 of SW 1/4				40	380			380	110		142
Minn. Power & Light Co.	"	NW 1/4 of SW 1/4				40	402			402	134		173
"	"	SW 1/4 of SW 1/4				40	402			402	134		173
L. J. Anderson	"	SE 1/4 of SW 1/4				40	480			480	160		206
W. S. Jones	#1	NE 1/4 of SE 1/4				40	402			402	134		173
L. J. Anderson	"	NW 1/4 of SE 1/4				40	390	600		990	330		368
W. S. Jones	"	SW 1/4 of SE 1/4				40	402			402	134		173
"	"	SE 1/4 of SE 1/4				40	402			402	134		173
Minn. Power & Light Co.	"	That part of Lots 3 & 4 The S 1/2 of NW 1/4 described by metes and bounds in that certain deed from Matthew B. Lynch and wife to Minn. Power & Light Co. dated Jan. 8, 1926, Recorded on —, in Book — of deeds on page —	4	133	29	64.45	774			774	268		333
						662.24	7162	460		14622	3874		4567

PLATTED PERSONAL

Assessor's Return of Taxable Real Property in the Town of Sylvan, County of Cass, Minn., for the Year 1926.

Unplatted Real Estate - Assessed at 33 1/3 per cent of True and Full Value.

NAME OF OWNER	No. of School Dist.	DESCRIPTION	Sec. or Lot	Twp. or Block	Range	Number of Acres		ASSESSOR'S VALUATIONS				EQUALIZED VALUATIONS		
						Acres	100ths	True and Full Value of Lands Exclusive of Structures and Improvements Dollars	STRUCTURES AND IMPROVEMENTS True and Full Value of Buildings and Other Structures Dollars	True and Full Value of Machinery Permanently Attached to Real Estate Dollars	Total True and Full Value of Lands Including all Structures, Improvements and Machinery Dollars	Assessed Value of Lands Including all Structures, Improvements and Machinery Dollars	Assessed Value as Equalized by Board of Review Dollars	Assessed Value as Equalized by the County Board Dollars
Mathew G. Lynch	#1	NE 1/4 of NE 1/4 Lot 1	5	133	29	36	36	596	462		596	462	154	199
Herman Peterson		NW 1/4 of NE 1/4 " 2				36	28	596	462		596	462	154	199
Mathew G. Lynch		SW 1/4 of NE 1/4				40		584	453		584	453	151	195
		SE 1/4 of NE 1/4				40		584	453		584	453	151	195
Peter Jensen		NE 1/4 of NW 1/4 " 3				36	24	600	465		600	465	155	200
"		NW 1/4 of NW 1/4 " 4				36	14	534	414		534	414	138	178
"		SW 1/4 of NW 1/4				40		569	441		569	441	147	189
"		SE 1/4 of NW 1/4				40		519	402		519	402	134	173
John Peterson		NE 1/4 of SW 1/4				40		657	510		657	510	170	219
"		NW 1/4 of SW 1/4				40		657	510		657	510	170	219
Brower Peterson		SW 1/4 of SW 1/4				40		588	464	400	1066	362	396	
"		SE 1/4 of SW 1/4				40		622	422		622	422	174	224
John Peterson		NE 1/4 of SE 1/4				40		573	444		573	444	148	191
"		NW 1/4 of SE 1/4				40		1181	1200		1680	550	593	
"		SW 1/4 of SE 1/4				40		657	510		657	510	170	219
Minn. Power & Light Co.		SE 1/4 of SE 1/4				40		679	480		679	480	160	206
						625	02	9587	7634	1800	11387	3294	3078	3796
								-2						

Assessor's Return of Taxable Real Property in the Town of Sylvan, County of Cass, Minn., for the Year 1926.

Unplatted Real Estate - Assessed at 33 1/3 per cent of True and Full Value.

NAME OF OWNER	No. of School Dist.	DESCRIPTION	Sec. or Lot	Twp. or Block	Range	Number of Acres		ASSESSOR'S VALUATIONS				EQUALIZED VALUATIONS		
						Acres	100ths	True and Full Value of Lands Exclusive of Structures and Improvements Dollars	STRUCTURES AND IMPROVEMENTS True and Full Value of Buildings and Other Structures Dollars	True and Full Value of Machinery Permanently Attached to Real Estate Dollars	Total True and Full Value of Lands Including all Structures, Improvements and Machinery Dollars	Assessed Value of Lands Including all Structures, Improvements and Machinery Dollars	Assessed Value as Equalized by Board of Review Dollars	Assessed Value as Equalized by the County Board Dollars
Hans Christian Jensen #1		NE 1/4 of NE 1/4 Lot 1	6	133	29	36	66	383	297		383	297	99	128
"		NW 1/4 of NE 1/4 " 2				37	78	395	306		395	306	102	132
Peter E. Nelson		SW 1/4 of NE 1/4				40		310	240		310	240	80	103
"		SE 1/4 of NE 1/4				40		345	306		345	306	102	132
		NE 1/4 of NW 1/4												
		NW 1/4 of NW 1/4												
		SW 1/4 of NW 1/4												
		SE 1/4 of NW 1/4												
Aug. Satter		NE 1/4 of SW 1/4				40		310	240		310	240	80	103
"		NW 1/4 of SW 1/4				40	47	414	321		414	321	107	138
"		SW 1/4 of SW 1/4				40	65	519	402		519	402	134	173
"		SE 1/4 of SW 1/4				40		622	422		622	422	174	224
Peter E. Nelson		NE 1/4 of SE 1/4				40		414	321		414	321	107	138
"		NW 1/4 of SE 1/4				40		364	282		364	282	94	121
"		SW 1/4 of SE 1/4				40		304	282		304	282	94	121
"		SE 1/4 of SE 1/4				40		414	321		414	321	107	138
						475	56	4785	3708		4785	3708	1236	1595
								+2						

PLATTED

PERSONAL

Assessor's Return of Taxable Real Property in the Town of Sylvan, County of Cass, Minn., for the Year 1926.

Unplatted Real Estate - Assessed at 33 1/3 per cent of True and Full Value.

NAME OF OWNER	No. of School Dist.	DESCRIPTION	Sec. or Lot	Twp. or Block	Range	Number of Acres	ASSESSOR'S VALUATIONS				EQUALIZED VALUATIONS		
							True and Full Value of Lands Exclusive of Structures and Improvements	STRUCTURES AND IMPROVEMENTS	Total True and Full Value of Lands Including all Structures, Improvements and Machinery	Assessed Value of Lands Including all Structures, Improvements and Machinery	Assessed Value as Equalized by Board of Review	Assessed Value as Equalized by the County Board	Assessed Value as Equalized by the Minnesota Tax Commission
Christ Goette	#1	NE 1/4 of NE 1/4	7	133	29	40	402		402	134		173	
"		NW 1/4 of NE 1/4				40	402		402	134		173	
"		SW 1/4 of NE 1/4				40	490	152	642	214		261	
"		SE 1/4 of NE 1/4				40	522		522	174		224	
Aug. Satter		NE 1/4 of NW 1/4				40	507		507	169		218	
"		NW 1/4 of NW 1/4				40	487	800	1287	429		476	
Ida Anderson		SW 1/4 of NW 1/4				40	120		120	40		52	
"		SE 1/4 of NW 1/4				40	462		462	154		199	
"		NE 1/4 of SW 1/4				40	402		402	134		173	
"		NW 1/4 of SW 1/4				40	396		396	132		170	
"		SW 1/4 of SW 1/4				40	502	752	1254	418		466	
"		SE 1/4 of SW 1/4				40	381		381	127		163	
Thas. H. Beighley		NE 1/4 of SE 1/4				40	501		501	167		215	
"		NW 1/4 of SE 1/4				40	441		441	147		189	
"		SW 1/4 of SE 1/4				40	330	300	630	210		243	
"		SE 1/4 of SE 1/4				40	441		441	147		189	
						642	6784	2004	8788	2930		3584	
							+1					-2	

Assessor's Return of Taxable Real Property in the Town of Sylvan, County of Cass, Minn., for the Year 1926.

Unplatted Real Estate - Assessed at 33 1/3 per cent of True and Full Value.

NAME OF OWNER	No. of School Dist.	DESCRIPTION	Sec. or Lot	Twp. or Block	Range	Number of Acres	ASSESSOR'S VALUATIONS				EQUALIZED VALUATIONS		
							True and Full Value of Lands Exclusive of Structures and Improvements	STRUCTURES AND IMPROVEMENTS	Total True and Full Value of Lands Including all Structures, Improvements and Machinery	Assessed Value of Lands Including all Structures, Improvements and Machinery	Assessed Value as Equalized by Board of Review	Assessed Value as Equalized by the County Board	Assessed Value as Equalized by the Minnesota Tax Commission
John Peterson	#1	NE 1/4 of NE 1/4	8	133	29	40	480		480	160		206	
Minn. Power & Light Co.		NW 1/4 of NE 1/4				40	480		480	160		206	
"		SW 1/4 of NE 1/4				40	480		480	160		206	
"		SE 1/4 of NE 1/4				40	480		480	160		206	
Aug. Satter		NE 1/4 of NW 1/4				40	510	300	810	270		319	
Frank Satter		NW 1/4 of NW 1/4				40	441		441	147		189	
"		SW 1/4 of NW 1/4				63	786		786	262		338	
"		SE 1/4 of NW 1/4				63	786		786	262		338	
Minn. Power & Light Co.		NE 1/4 of SW 1/4				40	480		480	160		206	
Chas. W. Ramsey		NW 1/4 of SW 1/4				62	707	400	1107	369		437	
"		SW 1/4 of SW 1/4				40	480		480	160		206	
Minn. Power & Light Co.		SE 1/4 of SW 1/4				35	420		420	140		181	
Arthur L. & Fannie Dade		NE 1/4 of SE 1/4				40	480		480	160		206	
Minn. Power & Light Co.		NW 1/4 of SE 1/4				40	480		480	160		206	
"		SW 1/4 of SE 1/4				40	480		480	160		206	
Arthur L. & Fannie Dade		SE 1/4 of SE 1/4				40	480	300	780	260		306	
						640	7664	1000	8664	2988		3624	
							+2					-4	

PLATTED

PERSONAL

Assessor's Return of Taxable Real Property in the Town of Sylvan, County of Cass, Minn., for the Year 1926.

Unplatted Real Estate - Assessed at 33 1/3 per cent of True and Full Value.

Table with columns: NAME OF OWNER, No. of School Dist., DESCRIPTION, ASSESSOR'S VALUATIONS (STRUCTURES AND IMPROVEMENTS, Total True and Full Value, Assessed Value), EQUALIZED VALUATIONS (Assessed Value as Equalized by Board of Review, Assessed Value as Equalized by the County Board, Assessed Value as Equalized by the Minnesota Tax Commission).

Commencing at a point 26 rd. E. of a point on Sec. line between Sec. 8 & 9, 2nd. N. of Sec. corner between Sec. 8 & 9, 16 & 17, thence from said mentioned point a sufficient distance N. thence at right angles east then at right angles to a point 2 rd. N. of S. line of Sec. 9, thence at right angles W. to place of beginning to contain about 1 sq. acre.

Assessor's Return of Taxable Real Property in the Town of Sylvan, County of Cass, Minn., for the Year 1926.

Unplatted Real Estate - Assessed at 33 1/3 per cent of True and Full Value.

Table with columns: NAME OF OWNER, No. of School Dist., DESCRIPTION, ASSESSOR'S VALUATIONS (STRUCTURES AND IMPROVEMENTS, Total True and Full Value, Assessed Value), EQUALIZED VALUATIONS (Assessed Value as Equalized by Board of Review, Assessed Value as Equalized by the County Board, Assessed Value as Equalized by the Minnesota Tax Commission).

PLATED

PERSONAL

Assessor's Return of Taxable Real Property in the Town of Sylvan, County of Cass, Minn., for the Year 1926.

Unplatted Real Estate - Assessed at 33 1/3 per cent of True and Full Value.

Table with columns: NAME OF OWNER, No. of School Dist., DESCRIPTION, ASSESSOR'S VALUATIONS (True and Full Value, Structures and Improvements, Total True and Full Value, Assessed Value), EQUALIZED VALUATIONS (Assessed Value as Equalized by Board of Review, Assessed Value as Equalized by County Board, Assessed Value as Equalized by Minnesota Tax Commission).

Assessor's Return of Taxable Real Property in the Town of Sylvan, County of Cass, Minn., for the Year 1926.

Unplatted Real Estate - Assessed at 33 1/3 per cent of True and Full Value.

Table with columns: NAME OF OWNER, No. of School Dist., DESCRIPTION, ASSESSOR'S VALUATIONS (True and Full Value, Structures and Improvements, Total True and Full Value, Assessed Value), EQUALIZED VALUATIONS (Assessed Value as Equalized by Board of Review, Assessed Value as Equalized by County Board, Assessed Value as Equalized by Minnesota Tax Commission).

PLATTED

PERSONAL

Assessor's Return of Taxable Real Property in the Town of Sylvan, County of Cass, Minn., for the Year 1926.

Unplatted Real Estate - Assessed at 33 1/3 per cent of True and Full Value.

NAME OF OWNER	No. of School Dist.	DESCRIPTION	Sec. or Lot	Twp. or Block	Range	Number of Acres	ASSESSOR'S VALUATIONS				EQUALIZED VALUATIONS								
							True and Full Value of Lands Exclusive of Structures and Improvements	STRUCTURES AND IMPROVEMENTS True and Full Value of Buildings and Other Structures	True and Full Value of Machinery Permanently Attached to Real Estate	Total True and Full Value of Lands Including all Structures, Improvements and Machinery	Assessed Value of Lands Including all Structures, Improvements and Machinery	Assessed Value as Equalized by Board of Review	Assessed Value as Equalized by the County Board	Assessed Value as Equalized by the Minnesota Tax Commission					
George Lively	#1	NE 1/4 of NE 1/4	18	133	29														
"	"	NW 1/4 of NE 1/4				135.79	1755	1800	3555	1185		1355							
"	"	SW 1/4 of NE 1/4																	
"	"	SE 1/4 of NE 1/4																	
"	"	NE 1/4 of NW 1/4				40	480		480	160		206							
Isaac N. Smith	"	NW 1/4 of NW 1/4	Lot 1			40	622		622	174		224							
"	"	SW 1/4 of NW 1/4	" 2 less Ry Rwy			29.66	364		364	118		152							
"	"	SE 1/4 of NW 1/4				27.79	333		333	111		143							
Allen O. Fawkes	"	NE 1/4 of SW 1/4				40	480	702	1182	394		440							
"	"	NW 1/4 of SW 1/4	Lot 3			40	480		480	160		206							
"	"	SW 1/4 of SW 1/4	" 4			40	480		480	160		206							
"	"	SE 1/4 of SW 1/4				40	480		480	160		206							
Geo. Lively	"	NE 1/4 of SE 1/4				40	522		522	174		224							
"	"	NW 1/4 of SE 1/4				40	522		522	174		224							
Allen O. Fawkes	"	SW 1/4 of SE 1/4				40	480		480	160		206							
Minn. Power & Light Co.	"	SE 1/4 of SE 1/4				40	480		480	160		206							
						593.24	7368	2502	9870	3290		3998							

Assessor's Return of Taxable Real Property in the Town of Sylvan, County of Cass, Minn., for the Year 1926.

Unplatted Real Estate - Assessed at 33 1/3 per cent of True and Full Value.

NAME OF OWNER	No. of School Dist.	DESCRIPTION	Sec. or Lot	Twp. or Block	Range	Number of Acres	ASSESSOR'S VALUATIONS				EQUALIZED VALUATIONS								
							True and Full Value of Lands Exclusive of Structures and Improvements	STRUCTURES AND IMPROVEMENTS True and Full Value of Buildings and Other Structures	True and Full Value of Machinery Permanently Attached to Real Estate	Total True and Full Value of Lands Including all Structures, Improvements and Machinery	Assessed Value of Lands Including all Structures, Improvements and Machinery	Assessed Value as Equalized by Board of Review	Assessed Value as Equalized by the County Board	Assessed Value as Equalized by the Minnesota Tax Commission					
Minn. Power & Light Co.	#1	NE 1/4 of NE 1/4	19	133	29	40	480		480	160		206							
"	"	NW 1/4 of NE 1/4				40	480		480	160		206							
"	#13	SW 1/4 of NE 1/4				40	480		480	160		206							
"	"	SE 1/4 of NE 1/4				40	480		480	160		206							
"	"	NE 1/4 of NW 1/4				40	480		480	160		206							
Geo. W. Gardner	"	NW 1/4 of NW 1/4	Lot 1			42.14	504		504	168		217							
"	"	SW 1/4 of NW 1/4	" 2			41.87	603		603	201		259							
"	"	SE 1/4 of NW 1/4	less 10 a.			30	360		360	120		155							
Minn. Power & Light Co.	"	10 a. of SE 1/4 NW 1/4				10	120		120	40		52							
"	#13	NE 1/4 of SW 1/4				40	480		480	160		206							
George W. Gardner	"	NW 1/4 of SW 1/4	Lot 3			41.68	504		504	168		217							
Minn. Power & Light Co.	"	SW 1/4 of SW 1/4	" 4			42.07	504		504	168		217							
"	"	SE 1/4 of SW 1/4				40	480		480	160		206							
D. M. Cameron	#13	NE 1/4 of SE 1/4				40	480		480	160		206							
Minn. Power & Light Co.	"	NW 1/4 of SE 1/4				40	480		480	160		206							
D. M. Cameron	"	SW 1/4 of SE 1/4				40	480		480	160		206							
"	"	SE 1/4 of SE 1/4				40	480		480	160		206							
						647.69	7875		7875	2625		3383							

PLATTED PERSONAL

Assessor's Return of Taxable Real Property in the Town of Sylvan, County of Cass, Minn., for the Year 1926.

Unplatted Real Estate - Assessed at 33 1/3 per cent of True and Full Value.

NAME OF OWNER	No. of School Dist.	DESCRIPTION	Sec. or Lot	Twp. or Block	Range	Number of Acres	ASSESSOR'S VALUATIONS					EQUALIZED VALUATIONS				
							True and Full Value of Lands Exclusive of Structures and Improvements	STRUCTURES AND IMPROVEMENTS		Total True and Full Value of Lands Including all Structures, Improvements and Machinery	Assessed Value of Lands Including all Structures, Improvements and Machinery	Assessed Value as Equalized by Board of Review	Assessed Value as Equalized by the County Board	Assessed Value as Equalized by the Minnesota Tax Commission		
								True and Full Value of Buildings and Other Structures	True and Full Value of Machinery Permanently Attached to Real Estate						Dollars	Dollars
Minn Power & Light Co. #1		NE 1/4 of NE 1/4	20	133	29	40	480		480	160		206				
"		NW 1/4 of NE 1/4				40	480		480	160		206				
" #13		SW 1/4 of NE 1/4				40	480		480	160		206				
"		SE 1/4 of NE 1/4				40	480		480	160		206				
" #1		NE 1/4 of NW 1/4				40	480		480	160		206				
"		NW 1/4 of NW 1/4				40	480		480	160		206				
" #13		SW 1/4 of NW 1/4				40	480		480	160		206				
"		SE 1/4 of NW 1/4				40	480		480	160		206				
Minn Power & Light Co. "		NE 1/4 of SW 1/4				40	480		480	160		206				
"		NW 1/4 of SW 1/4				40	480		480	160		206				
"		SW 1/4 of SW 1/4				40	480		480	160		206				
"		SE 1/4 of SW 1/4				40	480		480	160		206				
Whitemarsh Mining Co. "		NE 1/4 of SE 1/4				40	480		480	160		206				
"		NW 1/4 of SE 1/4				40	480		480	160		206				
"		SW 1/4 of SE 1/4				40	480		480	160		206				
"		SE 1/4 of SE 1/4				40	480		480	160		206				
						640	7680		7680	2560		3296				

Assessor's Return of Taxable Real Property in the Town of Sylvan, County of Cass, Minn., for the Year 1926.

Unplatted Real Estate - Assessed at 33 1/3 per cent of True and Full Value.

NAME OF OWNER	No. of School Dist.	DESCRIPTION	Sec. or Lot	Twp. or Block	Range	Number of Acres	ASSESSOR'S VALUATIONS					EQUALIZED VALUATIONS				
							True and Full Value of Lands Exclusive of Structures and Improvements	STRUCTURES AND IMPROVEMENTS		Total True and Full Value of Lands Including all Structures, Improvements and Machinery	Assessed Value of Lands Including all Structures, Improvements and Machinery	Assessed Value as Equalized by Board of Review	Assessed Value as Equalized by the County Board	Assessed Value as Equalized by the Minnesota Tax Commission		
								True and Full Value of Buildings and Other Structures	True and Full Value of Machinery Permanently Attached to Real Estate						Dollars	Dollars
Roy Livingston	1	NE 1/4 of NE 1/4	21	133	29	40	480		480	160		206				
"	"	NW 1/4 of NE 1/4				40	480		480	160		206				
"	13	SW 1/4 of NE 1/4				40	480		480	160		206				
"	"	SE 1/4 of NE 1/4				40	480		480	160		206				
"	1	NE 1/4 of NW 1/4				40	480		480	160		206				
Minn. Power & Light Co. "	"	NW 1/4 of NW 1/4				40	480		480	160		206				
"	13	SW 1/4 of NW 1/4				40	480		480	160		206				
Roy Livingston	"	SE 1/4 of NW 1/4				40	480		480	160		206				
"	13	NE 1/4 of SW 1/4				40	480		480	160		206				
Minn. Power & Light Co. "	"	NW 1/4 of SW 1/4				40	480		480	160		206				
"	"	SW 1/4 of SW 1/4				40	480		480	160		206				
"	"	SE 1/4 of SW 1/4				40	480		480	160		206				
Roy R. Livingston	13	NE 1/4 of SE 1/4				40	480		480	160		206				
"	"	NW 1/4 of SE 1/4				40	480		480	160		206				
Cuyuna Range Power Co. "	"	SW 1/4 of SE 1/4				40	480		480	160		206				
Katherine W. Benner	"	SE 1/4 of SE 1/4				40	480		480	160		206				
						640	7680		7680	2560		3296				

PLATTED

PERSONAL

Assessor's Return of Taxable Real Property in the Town of Sylvan, County of Cass, Minn., for the Year 1926.

Unplatted Real Estate - Assessed at 33 1/3 per cent of True and Full Value.

Table with columns: NAME OF OWNER, No. of School Dist., DESCRIPTION, ASSESSOR'S VALUATIONS, EQUALIZED VALUATIONS. Includes entries for J. McColl, Ole Peterson, Chas. Stanley, and J. D. Mc Kisson.

Assessor's Return of Taxable Real Property in the Town of Sylvan, County of Cass, Minn., for the Year 1926.

Unplatted Real Estate - Assessed at 33 1/3 per cent of True and Full Value.

Table with columns: NAME OF OWNER, No. of School Dist., DESCRIPTION, ASSESSOR'S VALUATIONS, EQUALIZED VALUATIONS. Includes entries for Angie M. Mallory, Phoebe Kemp, Adolph Staub, A. F. Crathers, and Peter Yde.

Assessor's Return of Taxable Real Property in the Town of Sylvan, County of Cass, Minn., for the Year 1926.
Unplatted Real Estate - Assessed at 33 1/3 per cent of True and Full Value.

NAME OF OWNER	No. of School Dist.	DESCRIPTION	Sec. or Lot	Twp. or Block	Range	Number of Acres		ASSESSOR'S VALUATIONS					EQUALIZED VALUATIONS			
						Acres	100ths	True and Full Value of Land and Structures and Improvements Dollars	STRUCTURES AND IMPROVEMENTS		Total True and Full Value of Land and Structures, Improvements and Machinery Dollars	Assessed Value of Land Including all Structures, Improvements and Machinery Dollars	Assessed Value as Equalized by Board of Review Dollars	Assessed Value as Equalized by the County Board Dollars	Assessed Value as Equalized by the Minnesota Tax Commission Dollars	
									True and Full Value of Buildings and Other Structures Dollars	True and Full Value of Machinery Permanently Attached to Real Estate Dollars						
Duluth Land & Timber Co. 13 Minn. Power & Light Co.		Part of <u>G 1/2</u> NE 1/4 of NE 1/4	30	133	29	45	25	1006	780		780	260	335			
		NW 1/4 of NE 1/4				48		619	480		480	160	206			
Minnie E. Gardiner		Part of <u>G 1/2</u> SW 1/4 of NE 1/4				28	75	406	315	50000	35000	85315	28438	39389		
		SE 1/4 of NE 1/4				14	75	190	147			147	49	63		
Minn. Power & Light Co.		NE 1/4 of NW 1/4				48		619	480			480	160	206		
"		NW 1/4 of NW 1/4				35	25	453	351			351	117	151		
"		SE 1/4 of NW 1/4				15		235	182	50000	35000	25182	28394	78		
		NE 1/4 of SW 1/4						538	417			417	139	179		
		NW 1/4 of SW 1/4						263	204			204	68	88		
Minnie E. Gardiner		NE 1/4 of SE 1/4				34	75	538	417			417	139	179		
		NW 1/4 of SE 1/4						519	402			402	134	173		
		SW 1/4 of SE 1/4						274	200			200	68	88		
E. D. Johnson		SE 1/4 of SE 1/4				17		263	204			204	68	88		
		" 3	22	133	29	250		4360	24			24	8	10		
						201	25	3380	30000	30000	88380	29460	40705			

Assessor's Return of Taxable Real Property in the Town of Sylvan, County of Cass, Minn., for the Year 1926.
Unplatted Real Estate - Assessed at 33 1/3 per cent of True and Full Value.

NAME OF OWNER	No. of School Dist.	DESCRIPTION	Sec. or Lot	Twp. or Block	Range	Number of Acres		ASSESSOR'S VALUATIONS					EQUALIZED VALUATIONS			
						Acres	100ths	True and Full Value of Land and Structures and Improvements Dollars	STRUCTURES AND IMPROVEMENTS		Total True and Full Value of Land and Structures, Improvements and Machinery Dollars	Assessed Value of Land Including all Structures, Improvements and Machinery Dollars	Assessed Value as Equalized by Board of Review Dollars	Assessed Value as Equalized by the County Board Dollars	Assessed Value as Equalized by the Minnesota Tax Commission Dollars	
									True and Full Value of Buildings and Other Structures Dollars	True and Full Value of Machinery Permanently Attached to Real Estate Dollars						
E. B. Lumbard	13	NE 1/4 of NE 1/4 Lot 1	33	133	29	30	25	387	300		300	100	129			
A. J. Crathers 3/4 unit John C. Sweet 1/4 unit		NW 1/4 of NE 1/4 " 2				14	85	199	147			147	49	63		
E. B. Lumbard		SW 1/4 of NE 1/4 " 6				41	60	538	417			417	139	179		
Ole Peterson		SE 1/4 of NE 1/4 " 7				35	85	538	351			351	117	151		
"		NE 1/4 of NW 1/4				40		519	402			402	134	173		
"		NW 1/4 of NW 1/4 " 3				39	75	774	600			600	200	258		
"		SW 1/4 of NW 1/4						851	660	1600		660	220	284		
"		SE 1/4 of NW 1/4 " 5				56	30	2351	2160			2160	720	924		
E. B. Lumbard		NE 1/4 of SW 1/4 " 9				39	75	511	396			396	132	170		
"		NW 1/4 of SW 1/4						471	381			381	127	163		
"		SW 1/4 of SW 1/4						491	381			381	127	163		
"		SE 1/4 of SW 1/4 " 10				38	90	491	381			381	127	163		
E. B. Lumbard		NE 1/4 of SE 1/4 " 8				17	35	221	171			171	57	74		
C. E. Griffith		NW 1/4 of SE 1/4				40		519	402			402	134	173		
E. B. Lumbard		SW 1/4 of SE 1/4 " 11				25	50	329	255			255	85	109		
"		SE 1/4 of SE 1/4 " 12				18	75	240	184			184	62	80		
						438	85	6023	4669	1500		4669	2056	2506		

PLATED

PERSONAL

Assessor's Return of Taxable Real Property in the Town of Sylvan, County of Cass, Minn., for the Year 1926.

Unplatted Real Estate - Assessed at 33 1/3 per cent of True and Full Value.

NAME OF OWNER	No. of School Dist.	DESCRIPTION	Sec. or Lot	Twp. or Block	Range	Number of Acres		ASSESSOR'S VALUATIONS					EQUALIZED VALUATIONS					
						Acres	100ths	True and Full Value of Land and Improvements	STRUCTURES AND IMPROVEMENTS True and Full Value of Buildings and Other Structures	True and Full Value of Machinery Permanently Attached to Real Estate	Total True and Full Value of Land Including all Structures, Improvements and Machinery	Assessed Value of Land Including all Structures, Improvements and Machinery	Assessed Value as Equalized by Board of Review	Assessed Value as Equalized by the County Board	Assessed Value as Equalized by the Minnesota Tax Commission			
	1	NE 1/4 of NE 1/4	1	133	30													
		NW 1/4 of NE 1/4																
		SW 1/4 of NE 1/4																
		SE 1/4 of NE 1/4																
Alvin D. Johnson 1/3, Adolph Hagen 1/6, John Hagen 1/6, Njelm Lyman 1/6, Clarence Luman 1/6		NE 1/4 of NW 1/4																
		NW 1/4 of NW 1/4 Lot 1				55	50	569	441	569	441	147		189				
		SW 1/4 of NW 1/4																
		SE 1/4 of NW 1/4																
		NE 1/4 of SW 1/4																
		NW 1/4 of SW 1/4																
		SW 1/4 of SW 1/4																
		SE 1/4 of SW 1/4																
		NE 1/4 of SE 1/4																
		NW 1/4 of SE 1/4																
		SW 1/4 of SE 1/4																
		SE 1/4 of SE 1/4																
						55	50	569	441	569	441	147		189				

Assessor's Return of Taxable Real Property in the Town of Sylvan, County of Cass, Minn., for the Year 1926.

Unplatted Real Estate - Assessed at 33 1/3 per cent of True and Full Value.

NAME OF OWNER	No. of School Dist.	DESCRIPTION	Sec. or Lot	Twp. or Block	Range	Number of Acres		ASSESSOR'S VALUATIONS					EQUALIZED VALUATIONS					
						Acres	100ths	True and Full Value of Land and Improvements	STRUCTURES AND IMPROVEMENTS True and Full Value of Buildings and Other Structures	True and Full Value of Machinery Permanently Attached to Real Estate	Total True and Full Value of Land Including all Structures, Improvements and Machinery	Assessed Value of Land Including all Structures, Improvements and Machinery	Assessed Value as Equalized by Board of Review	Assessed Value as Equalized by the County Board	Assessed Value as Equalized by the Minnesota Tax Commission			
Martin Westfall #1		NE 1/4 of NE 1/4 Lot 1	2	133	30			3988	461	357	461	357	119					154
"		NW 1/4 of NE 1/4 " 2						2963	461	357	461	357	119					154
"		SW 1/4 of NE 1/4						40	464	360	464	360	120					155
"		SE 1/4 of NE 1/4						40	464	360	464	360	120					155
Peter Yde		NE 1/4 of NW 1/4 " 3						3937	457	354	457	354	118					152
"		NW 1/4 of NW 1/4 " 4						2912	457	354	457	354	118					152
"		SW 1/4 of NW 1/4						40	464	360	464	360	120					155
"		SE 1/4 of NW 1/4						40	464	360	464	360	120					155
William P. Robertson		NE 1/4 of SW 1/4 " 6						34	395	306	395	306	102					132
"		NW 1/4 of SW 1/4						40	464	360	464	360	120					155
"		SW 1/4 of SW 1/4 " 5						4525	581	450	581	450	120					233
"		SE 1/4 of SW 1/4																
Allie Goffney		NE 1/4 of SE 1/4 " 8						3560	453	351	453	351	150					201
"		NW 1/4 of SE 1/4 " 7						47	516	423	516	423	141					182
		SW 1/4 of SE 1/4																
		SE 1/4 of SE 1/4																
								51985	6131	4752	6131	4752	270					2135
																		12

PLATED

PERSONAL

Assessor's Return of Taxable Real Property in the Town of Sylvan, County of Cass, Minn., for the Year 1926.

Unplatted Real Estate - Assessed at 33 1/3 per cent of True and Full Value.

Table with columns: NAME OF OWNER, No. of School Dist., DESCRIPTION, ASSESSOR'S VALUATIONS (STRUCTURES AND IMPROVEMENTS, True and Full Value of Land, etc.), EQUALIZED VALUATIONS (Assessed Value as Equalized by Board of Review, etc.).

Assessor's Return of Taxable Real Property in the Town of Sylvan, County of Cass, Minn., for the Year 1926.

Unplatted Real Estate - Assessed at 33 1/3 per cent of True and Full Value.

Table with columns: NAME OF OWNER, No. of School Dist., DESCRIPTION, ASSESSOR'S VALUATIONS (STRUCTURES AND IMPROVEMENTS, True and Full Value of Land, etc.), EQUALIZED VALUATIONS (Assessed Value as Equalized by Board of Review, etc.).

PLATED

PERSONAL

Assessor's Return of Taxable Real Property in the Town of Sylvan, County of Cass, Minn., for the Year 1926.

Unplatted Real Estate - Assessed at 33 1/3 per cent of True and Full Value.

NAME OF OWNER	No. of School Dist.	DESCRIPTION	Sec. or Lot	Twp. or Block	Range	Number of Acres	ASSESSOR'S VALUATIONS				EQUALIZED VALUATIONS								
							True and Full Value of Lands Exclusive of Structures and Improvements	STRUCTURES AND IMPROVEMENTS True and Full Value of Buildings and Other Structures	True and Full Value of Machinery Permanently Attached to Real Estate	Total True and Full Value of all Structures, Improvements and Machinery	Assessed Value of Lands Including all Structures, Improvements and Machinery	Assessed Value as Equalized by Board of Review	Assessed Value as Equalized by the County Board	Assessed Value as Equalized by the Minnesota Tax Commission					
	#1	NE 1/4 of NE 1/4	5	133	30														
		NW 1/4 of NE 1/4																	
August Skoglund		SW 1/4 of NE 1/4 Lot 2 part W of road				1.50	24		24	24	8								
R. L. Patton		All E. of road SW 1/4 of NE 1/4				2.75	147		147	147	49	10							
Harriet B. Eveneta		NE 1/4 of NW 1/4 " 3				46.10	324		324	324	108	137							
"		NW 1/4 of NW 1/4 " 4				36.25	216		216	216	72	93							
"		SW 1/4 of NW 1/4				40	282		282	282	94	121							
"		SE 1/4 of NW 1/4				40	336	150	486	486	162	194							
G. R. Simons		NE 1/4 of SW 1/4				40	282		282	282	94	121							
M. P. Ry. Co.		NW 1/4 of SW 1/4				40	282		282	282	94	121							
G. R. Simons		SW 1/4 of SW 1/4				40	282		282	282	94	121							
Earl N. Farmer		SE 1/4 of SW 1/4				40	282		282	282	94	121							
Title Security Abstract Co.		NE 1/4 of SE 1/4 Lot 1 less tract				50.45	45		45	45	15	19							
R. L. Patton		NW 1/4 of SE 1/4				40	321		321	321	107	138							
August Skoglund		SW 1/4 of SE 1/4				40	321		321	321	107	138							
"		SE 1/4 of SE 1/4				40	360		360	360	120	155							
						519.35	3958	150	4008	4008	1336	1706							

Assessor's Return of Taxable Real Property in the Town of Sylvan, County of Cass, Minn., for the Year 1926.

Unplatted Real Estate - Assessed at 33 1/3 per cent of True and Full Value.

NAME OF OWNER	No. of School Dist.	DESCRIPTION	Sec. or Lot	Twp. or Block	Range	Number of Acres	ASSESSOR'S VALUATIONS				EQUALIZED VALUATIONS								
							True and Full Value of Lands Exclusive of Structures and Improvements	STRUCTURES AND IMPROVEMENTS True and Full Value of Buildings and Other Structures	True and Full Value of Machinery Permanently Attached to Real Estate	Total True and Full Value of all Structures, Improvements and Machinery	Assessed Value of Lands Including all Structures, Improvements and Machinery	Assessed Value as Equalized by Board of Review	Assessed Value as Equalized by the County Board	Assessed Value as Equalized by the Minnesota Tax Commission					
Joe Gachia	1	NE 1/4 of NE 1/4 Lot 1	6	133	30	37.76	374	100	474	474	158	194							
Harry Simons		NW 1/4 of NE 1/4 " 2				37.25	309	150	459	459	153	183							
Somers Lbr. Co.		SW 1/4 of NE 1/4 " 3				39.50	390		390	390	130	168							
La Fayette S. Mann		SE 1/4 of NE 1/4				40	402	75	477	477	159	198							
J. Summers		NE 1/4 of NW 1/4 " 5				61.67	402		402	402	134	173							
"		NW 1/4 of NW 1/4																	
"		SW 1/4 of NW 1/4 " 6				49.24	366		366	366	122	157							
"		SE 1/4 of NW 1/4 " 4				35.50	246		246	246	82	106							
"		NE 1/4 of SW 1/4				40	420	213	633	633	211	252							
"		NW 1/4 of SW 1/4 " 7				47.39	255		255	255	85	109							
V. L. Strentz		SW 1/4 of SW 1/4 " 8				45.53	246		246	246	82	106							
"		SE 1/4 of SW 1/4				40	402		402	402	134	173							
Joe Gachia		NE 1/4 of SE 1/4				40	282		282	282	94	121							
"		NW 1/4 of SE 1/4				40	360		360	360	120	155							
"		SW 1/4 of SE 1/4				40	360		360	360	120	155							
W. J. Buck		SE 1/4 of SE 1/4				40	396		396	396	132	170							
						633.84	5210	538	7259	7259	1916	2420							

PLATTED

PERSONAL

Assessor's Return of Taxable Real Property in the Town of Sylvan, County of Cass, Minn., for the Year 1926.

Unplatted Real Estate - Assessed at 33 1/3 per cent of True and Full Value.

Table with columns: NAME OF OWNER, No. of School Dist., DESCRIPTION, ASSESSOR'S VALUATIONS (True and Full Value of Land, Structures and Improvements, Total True and Full Value of Land), EQUALIZED VALUATIONS (Assessed Value as Equalized by Board of Review, Assessed Value as Equalized by the County Board, Assessed Value as Equalized by the Minnesota Tax Commission).

Assessor's Return of Taxable Real Property in the Town of Sylvan, County of Cass, Minn., for the Year 1926.

Unplatted Real Estate - Assessed at 33 1/3 per cent of True and Full Value.

Table with columns: NAME OF OWNER, No. of School Dist., DESCRIPTION, ASSESSOR'S VALUATIONS (True and Full Value of Land, Structures and Improvements, Total True and Full Value of Land), EQUALIZED VALUATIONS (Assessed Value as Equalized by Board of Review, Assessed Value as Equalized by the County Board, Assessed Value as Equalized by the Minnesota Tax Commission).

PLATED

PERSONAL

Assessor's Return of Taxable Real Property in the Town of Sylvan, County of Cass, Minn., for the Year 1926.

Unplatted Real Estate - Assessed at 33 1/3 per cent of True and Full Value.

NAME OF OWNER	No. of School Dist.	DESCRIPTION	Sec. or Lot	Twp. or Block	Range	Number of Acres	ASSESSOR'S VALUATIONS				EQUALIZED VALUATIONS		
							True and Full Value of Land Exclusive of Structures and Improvements	STRUCTURES AND IMPROVEMENTS True and Full Value of Buildings and Other Structures	Total True and Full Value of Land Including all Structures, Improvements and Machinery	Assessed Value Including all Structures, Improvements and Machinery	Assessed Value as Equalized by Board of Review	Assessed Value as Equalized by the County Board	Assessed Value as Equalized by the Minnesota Tax Commission
N. P. Ry. Co.	1	NE 1/4 of NE 1/4	9	133	30	40	282		282	94		121	
Frank C. Ramberg		NW 1/4 of NE 1/4				40	282		282	94		121	
"		SW 1/4 of NE 1/4				40	324		324	108		139	
"		SE 1/4 of NE 1/4				40	324	102	426	142		173	
Martin Westfall		NE 1/4 of NW 1/4				40	480		480	160		206	
A. Hendrickson		NW 1/4 of NW 1/4				40	480	210	690	230		276	
Lale J. Henry		n ² of SW 1/4 of NW 1/4				30	300		300	100		129	
Martin Westfall		SE 1/4 of NW 1/4				40	360		360	120		155	
L. J. Henry		S ² of S ² of SW 1/4 NW 1/4				10	111		111	37		43	
J. G. Henry		NE 1/4 of SW 1/4				40	402		402	134		173	
L. J. Henry		n ² of NW 1/4 of SW 1/4				20	240		240	80		103	
Wm. Coe		SW 1/4 of SW 1/4				40	480		480	160		206	
Martin Westfall		SE 1/4 of SW 1/4				40	402		402	134		173	
L. A. Henry		S ² of NW 1/4 SW 1/4				20	201		201	67		86	
Mildred Stowell		NE 1/4 of SE 1/4				40	441		441	147		189	
N. P. Ry. Co.		NW 1/4 of SE 1/4				40	441		441	147		189	
Edwin S. Hubin		SW 1/4 of SE 1/4				40	402		402	134		173	
		SE 1/4 of SE 1/4				40	480		480	160		206	
						640	6432	312	6744	2248		2867	

Assessor's Return of Taxable Real Property in the Town of Sylvan, County of Cass, Minn., for the Year 1926.

Unplatted Real Estate - Assessed at 33 1/3 per cent of True and Full Value.

NAME OF OWNER	No. of School Dist.	DESCRIPTION	Sec. or Lot	Twp. or Block	Range	Number of Acres	ASSESSOR'S VALUATIONS				EQUALIZED VALUATIONS		
							True and Full Value of Land Exclusive of Structures and Improvements	STRUCTURES AND IMPROVEMENTS True and Full Value of Buildings and Other Structures	Total True and Full Value of Land Including all Structures, Improvements and Machinery	Assessed Value Including all Structures, Improvements and Machinery	Assessed Value as Equalized by Board of Review	Assessed Value as Equalized by the County Board	Assessed Value as Equalized by the Minnesota Tax Commission
Anderson & Hawkinson #1		NE 1/4 of NE 1/4	10	133	30	40	360		360	120		155	
Wm. S. Jones		NW 1/4 of NE 1/4				40	324		324	107		138	
"		SW 1/4 of NE 1/4				40	324		324	107		138	
Anderson & Hawkinson		SE 1/4 of NE 1/4				40	360		360	120		155	
Wm. S. Jones		NE 1/4 of NW 1/4				40	240		240	80		103	
Alfred J. Dean		NW 1/4 of NW 1/4				40	240		240	80		103	
"		SW 1/4 of NW 1/4				40	240		240	80		103	
"		SE 1/4 of NW 1/4				40	240		240	80		103	
Agnes E. Anderson		NE 1/4 of SW 1/4				40	240		240	80		103	
"		NW 1/4 of SW 1/4				40	360		360	120		155	
"		SW 1/4 of SW 1/4				40	480		480	160		206	
"		SE 1/4 of SW 1/4				40	480	150	630	210		256	
Martin E. Erickson		NE 1/4 of SE 1/4				40	300		300	100		129	
Forest L. Weatherly		NW 1/4 of SE 1/4				40	324		324	107		138	
"		SW 1/4 of SE 1/4				40	402		402	134		173	
Martin Erickson		SE 1/4 of SE 1/4				40	380	160	540	180		217	
						640	5284	310	5595	1865		2375	

Assessor's Return of Taxable Real Property in the Town of Sylvan, County of Cass, Minn., for the Year 1926.

Unplatted Real Estate - Assessed at 33 1/3 per cent of True and Full Value.

NAME OF OWNER	No. of School Dist.	DESCRIPTION	Sec. or Lot	Twp. or Block	Range	Number of Acres	ASSESSOR'S VALUATIONS				EQUALIZED VALUATIONS									
							True and Full Value of Lands Exclusive of Structures and Improvements Dollars	STRUCTURES AND IMPROVEMENTS True and Full Value of Buildings and Other Structures Dollars	True and Full Value of Machinery Permanently Attached to Real Estate Dollars	Total True and Full Value of Lands Including all Structures, Improvements and Machinery Dollars	Assessed Value of Lands Including all Structures, Improvements and Machinery Dollars	Assessed Value as Equalized by Board of Review Dollars	Assessed Value as Equalized by the County Board Dollars	Assessed Value as Equalized by the Minnesota Tax Commission Dollars						
	#1	NE 1/4 of NE 1/4	11	133	30															
		NW 1/4 of NE 1/4																		
Wm. Steckling		SW 1/4 of NE 1/4 Lot 2 less 2A.				33.50	369	600	1076	323			359							
Andrew Schilke		SE 1/4 of NE 1/4 " 1 " 9.7A. platted				30.05	360	1200	1560	520			555							
Wm. Steckling		NE 1/4 of NW 1/4 " 4				32.25	258		333	86			111							
"		NW 1/4 of NW 1/4 " 5				32.25	258		333	86			111							
"		SW 1/4 of NW 1/4 " 3				21.25	171		221	57			74							
		SE 1/4 of NW 1/4																		
Wm. Steckling		NE 1/4 of SW 1/4				40	321		414	107			138							
"		NW 1/4 of SW 1/4				40	402		519	134			173							
"		SW 1/4 of SW 1/4				40	321		414	107			138							
"		SE 1/4 of SW 1/4				40	480		619	160			206							
Andrew Schilke		NE 1/4 of SE 1/4				40	522		673	174			224							
Wm. Steckling		NW 1/4 of SE 1/4				40	522		673	174			224							
"		SW 1/4 of SE 1/4				40	480		619	160			206							
Andrew Schilke		SE 1/4 of SE 1/4				40	622		823	174			224							
						469.30	4986	1800	8231	2262			2743							

Assessor's Return of Taxable Real Property in the Town of Sylvan, County of Cass, Minn., for the Year 1926.

Unplatted Real Estate - Assessed at 33 1/3 per cent of True and Full Value.

NAME OF OWNER	No. of School Dist.	DESCRIPTION	Sec. or Lot	Twp. or Block	Range	Number of Acres	ASSESSOR'S VALUATIONS				EQUALIZED VALUATIONS									
							True and Full Value of Lands Exclusive of Structures and Improvements Dollars	STRUCTURES AND IMPROVEMENTS True and Full Value of Buildings and Other Structures Dollars	True and Full Value of Machinery Permanently Attached to Real Estate Dollars	Total True and Full Value of Lands Including all Structures, Improvements and Machinery Dollars	Assessed Value of Lands Including all Structures, Improvements and Machinery Dollars	Assessed Value as Equalized by Board of Review Dollars	Assessed Value as Equalized by the County Board Dollars	Assessed Value as Equalized by the Minnesota Tax Commission Dollars						
G. N. Ramsey	#1	NE 1/4 of NE 1/4	12	133	30	40	619		619	160			206							
"		NW 1/4 of NE 1/4				40	402		519	134			173							
"		SW 1/4 of NE 1/4				40	402	600	1002	334			373							
"		SE 1/4 of NE 1/4				40	402		519	134			173							
Andrew Schilke		NE 1/4 of NW 1/4 less 2.9A. platted Sylvan Beach				37.10	333		433	111			144							
"		NW 1/4 of NW 1/4 Lot 1 less 13.3A.				28.20	252		325	84			108							
"		SW 1/4 of NW 1/4 platted Sylvan Beach																		
"		SE 1/4 of NW 1/4				40	402		519	184			173							
"		NE 1/4 of SW 1/4				40	402		519	134			173							
"		NW 1/4 of SW 1/4				40	444		573	148			191							
"		SW 1/4 of SW 1/4				40	336		433	112			144							
"		SE 1/4 of SW 1/4				40	321		433	107			138							
Annie E. Koppelman & Emma Fisher		NE 1/4 of SE 1/4				40	402		519	134			173							
"		NW 1/4 of SE 1/4				40	480		619	160			206							
"		SW 1/4 of SE 1/4				40	336		433	112			144							
"		SE 1/4 of SE 1/4				40	480		619	160			206							
						585.30	5874	600	7581	2158			2725							

PLATTED

PERSONAL

Assessor's Return of Taxable Real Property in the Town of Sylvan, County of Cass, Minn., for the Year 1926.

Unplatted Real Estate - Assessed at 33 1/3 per cent of True and Full Value.

Table with columns: NAME OF OWNER, No. of School Dist., DESCRIPTION, SUBDIVISION, Sec. or Lot, Twp. or Block, Range, Number of Acres, ASSESSOR'S VALUATIONS (True and Full Value of Lands, Structures and Improvements, Total True and Full Value), EQUALIZED VALUATIONS (Assessed Value as Equalized by Board of Review, Assessed Value as Equalized by the County Board, Assessed Value as Equalized by the Minnesota Tax Commission).

Assessor's Return of Taxable Real Property in the Town of Sylvan, County of Cass, Minn., for the Year 1926.

Unplatted Real Estate - Assessed at 33 1/3 per cent of True and Full Value.

Table with columns: NAME OF OWNER, No. of School Dist., DESCRIPTION, SUBDIVISION, Sec. or Lot, Twp. or Block, Range, Number of Acres, ASSESSOR'S VALUATIONS (True and Full Value of Lands, Structures and Improvements, Total True and Full Value), EQUALIZED VALUATIONS (Assessed Value as Equalized by Board of Review, Assessed Value as Equalized by the County Board, Assessed Value as Equalized by the Minnesota Tax Commission).

Assessor's Return of Taxable Real Property in the Town of Sylvan, County of Cass, Minn., for the Year 1926.

Unplatted Real Estate - Assessed at 33 1/3 per cent of True and Full Value.

Table with columns: NAME OF OWNER, No. of School Dist., DESCRIPTION, ASSESSOR'S VALUATIONS (STRUCTURES AND IMPROVEMENTS, True and Full Value of Land, etc.), and EQUALIZED VALUATIONS. Includes entries for Geo. A. Lively, Minn. Light & Power Co., J. P. Hanson, Christina Hanson, Martin Westfall, and Minn. Power & Light Co.

Assessor's Return of Taxable Real Property in the Town of Sylvan, County of Cass, Minn., for the Year 1926.

Unplatted Real Estate - Assessed at 33 1/3 per cent of True and Full Value.

Table with columns: NAME OF OWNER, No. of School Dist., DESCRIPTION, ASSESSOR'S VALUATIONS (STRUCTURES AND IMPROVEMENTS, True and Full Value of Land, etc.), and EQUALIZED VALUATIONS. Includes entries for Mary E. Parks, John W. Lee, Stephen E. Parks, Minn. Power & Light Co., Mary Hardow, and Frank A. Reid.

Assessor's Return of Taxable Real Property in the Town of Sylvan, County of Cass, Minn., for the Year 1926.

Unplatted Real Estate - Assessed at 33 1/3 per cent of True and Full Value.

NAME OF OWNER	No. of School Dist.	DESCRIPTION	Sec. or Lot	Twp. or Block	Range	Number of Acres		ASSESSOR'S VALUATIONS					EQUALIZED VALUATIONS			
						Acres	100ths	True and Full Value of Lands Exclusive of Structures and Improvements Dollars	STRUCTURES AND IMPROVEMENTS True and Full Value of Buildings and Other Structures Dollars	True and Full Value of Machinery Permanently Attached to Real Estate Dollars	Total True and Full Value of Lands Including all Structures, Improvements and Machinery Dollars	Assessed Value of Lands Including all Structures, Improvements and Machinery Dollars	Assessed Value as Equalized by Board of Review Dollars	Assessed Value as Equalized by the County Board Dollars	Assessed Value as Equalized by the Minnesota Tax Commission Dollars	
Anna Gerrels	1	NE 1/4 of NE 1/4	17	133	30	40		565	438		565	438	146			188
Wm. Berndt		NW 1/4 of NE 1/4				40		630	1001		1672	521	507			557
"		SW 1/4 of NE 1/4				40		492			635	492	169			212
"		SE 1/4 of NE 1/4														
Nancy Dorsey		NE 1/4 of NW 1/4				40		569			569	441	147			189
Chas. A. Gardner		NW 1/4 of NW 1/4				40		360			464	360	120			155
"		SW 1/4 of NW 1/4				40		441			569	441	147			189
Nancy Dorsey		SE 1/4 of NW 1/4				40		381	760		1331	381	381			414
Arue Ben Gardner		NE 1/4 of SW 1/4				40		438	300		815	738	249			288
"		NW 1/4 of SW 1/4				40		402			516	402	134			173
C. L. Peterson		SW 1/4 of SW 1/4 Less Ry R/Wy				28	44	270			308	270	90			116
"		SE 1/4 of SW 1/4 " " "				28	42	270			310	270	90			116
Muriel E. Wheeler		NE 1/4 of SE 1/4									619					
C. L. Peterson		NW 1/4 of SE 1/4				40		480			619	480	160			206
"		SW 1/4 of SE 1/4 less Ry				27	55	360			514	360	120			155
Wm. O. Mayfield		SE 1/4 of SE 1/4									499					
"		1 acre of SW + SE 1/4				1		15	201		270	219	72			73
						485	41	5308	2852		9598	7560	2520			3031
								-1								-2

Assessor's Return of Taxable Real Property in the Town of Sylvan, County of Cass, Minn., for the Year 1926.

Unplatted Real Estate - Assessed at 33 1/3 per cent of True and Full Value.

NAME OF OWNER	No. of School Dist.	DESCRIPTION	Sec. or Lot	Twp. or Block	Range	Number of Acres		ASSESSOR'S VALUATIONS					EQUALIZED VALUATIONS			
						Acres	100ths	True and Full Value of Lands Exclusive of Structures and Improvements Dollars	STRUCTURES AND IMPROVEMENTS True and Full Value of Buildings and Other Structures Dollars	True and Full Value of Machinery Permanently Attached to Real Estate Dollars	Total True and Full Value of Lands Including all Structures, Improvements and Machinery Dollars	Assessed Value of Lands Including all Structures, Improvements and Machinery Dollars	Assessed Value as Equalized by Board of Review Dollars	Assessed Value as Equalized by the County Board Dollars	Assessed Value as Equalized by the Minnesota Tax Commission Dollars	
Frank Swanson	1	NE 1/4 of NE 1/4	18	133	30	40		619	700		1321	394				440
"		NW 1/4 of NE 1/4				40		322			673	322	174			224
"		SW 1/4 of NE 1/4				40		519			519	402	139			297
"		SE 1/4 of NE 1/4				40		360			364	360	120			173
Harold A. & Edward J. Dorsey		NE 1/4 of NW 1/4				40		291			375	291	97			125
Chas. A. Gardner		NW 1/4 of NW 1/4 Lot 1				45	68	429	361		904	780	260			301
"		SW 1/4 of NW 1/4 " 2				45	84	604			650	604	168			217
Harold A. & Edw. J. Dorsey		SE 1/4 of NW 1/4				40		276			356	276	92			119
Carl Pieper		NE 1/4 of SW 1/4				40		486			588	456	152			196
Herman Stahl		NW 1/4 of SW 1/4 " 3				45	99	501			646	501	167			215
"		SW 1/4 of SW 1/4 " 4				46	13	480	1200		1899	1680	560			182
Carl Pieper		SE 1/4 of SW 1/4				40		330	460		356	780	260			606
Warren G. Burnham		NE 1/4 of SE 1/4				40		360			464	360	120			292
"		NW 1/4 of SE 1/4				40		402			519	402	134			155
Peter Yde		SW 1/4 of SE 1/4				40		414			534	414	138			173
"		SE 1/4 of SE 1/4 Less Ry R/Wy				37	42	387			499	387	129			178
						661	06	8504	2703		9297	9297	3099			166
								-2			11207					3735

PLATTED

PERSONAL

Assessor's Return of Taxable Real Property in the Town
Unplatted Real Estate - Assessed at:

NAME OF OWNER	No. of School Dist.	DESCRIPTION	Sec. or Lot	Twp. or Block	Value and Tax
		NE 1/4 of NE 1/4			
		NW 1/4 of NE 1/4			
		SW 1/4 of NE 1/4			
		SE 1/4 of NE 1/4			
		NE 1/4 of NW 1/4			
		NW 1/4 of NW 1/4			
		SW 1/4 of NW 1/4			
		SE 1/4 of NW 1/4			
		NE 1/4 of SW 1/4			
		NW 1/4 of SW 1/4			
		SW 1/4 of SW 1/4			
		SE 1/4 of SW 1/4			
		NE 1/4 of SE 1/4			
		NW 1/4 of SE 1/4			
		SW 1/4 of SE 1/4			
		SE 1/4 of SE 1/4			

PAGES

40

THRU

41

BLANK

Assessor's Return of Taxable Real Property in the Town of Sylvan, County of Cass, Minn., for the Year 1926.

Unplatted Real Estate - Assessed at 33 1/3 per cent of True and Full Value.

NAME OF OWNER	No. of School Dist.	DESCRIPTION	Sec. or Lot	Twp. or Block	Range	Number of Acres	True and Full Value of Land Exclusive of Structures and Improvements	ASSESSOR'S VALUATIONS				EQUALIZED VALUATIONS			
								True and Full Value of Buildings and Other Structures	True and Full Value of Machinery Permanently Attached to Real Estate	Total True and Full Value of Land Including all Structures, Improvements and Machinery	Assessed Value of Land Including all Structures, Improvements and Machinery	Assessed Value as Equalized by Board of Review	Assessed Value as Equalized by the County Board	Assessed Value as Equalized by the Minnesota Tax Commission	
		NE 1/4 of NE 1/4													
		NW 1/4 of NE 1/4													
		SW 1/4 of NE 1/4													
		SE 1/4 of NE 1/4													
		NE 1/4 of NW 1/4													
		NW 1/4 of NW 1/4													
		SW 1/4 of NW 1/4													
		SE 1/4 of NW 1/4													
		NE 1/4 of SW 1/4													
		NW 1/4 of SW 1/4													
		SW 1/4 of SW 1/4													
		SE 1/4 of SW 1/4													
		NE 1/4 of SE 1/4													
		NW 1/4 of SE 1/4													
		SW 1/4 of SE 1/4													
		SE 1/4 of SE 1/4													

PLATTED

PERSONAL

Assessor's Return of Taxable Real Property in the Town of Sylvan, County of Cass, Minn., for the Year 1926.
Unplatted Real Estate - Assessed at 33 1/3 per cent of True and Full Value.

NAME OF OWNER	No. of School Dist.	DESCRIPTION	Sec. or Lot	Twp. or Block	Range	ASSESSOR'S VALUATIONS				EQUALIZED VALUATIONS			
						True and Full Value of Lands, Structures and Improvements Dollars	STRUCTURES AND IMPROVEMENTS True and Full Value of Buildings and Other Structures Dollars	True and Full Value of Machinery Permanently Attached to Real Estate Dollars	Total True and Full Value of Lands Including all Structures, Improvements and Machinery Dollars	Assessed Value of Lands Including all Structures, Improvements and Machinery Dollars	Assessed Value as Equalized by Board of Review Dollars	Assessed Value as Equalized by the County Board Dollars	Assessed Value as Equalized by the Minnesota Tax Commission Dollars
		NE 1/4 of NE 1/4											
		NW 1/4 of NE 1/4											
		SW 1/4 of NE 1/4											
		SE 1/4 of NE 1/4											
		NE 1/4 of NW 1/4											
		NW 1/4 of NW 1/4											
		SW 1/4 of NW 1/4											
		SE 1/4 of NW 1/4											
		NE 1/4 of SW 1/4											
		NW 1/4 of SW 1/4											
		SW 1/4 of SW 1/4											
		SE 1/4 of SW 1/4											
		NE 1/4 of SE 1/4											
		NW 1/4 of SE 1/4											
		SW 1/4 of SE 1/4											
		SE 1/4 of SE 1/4											

PAGES

40

THRU

44

BLANK

Assessor's Return of Taxable Real Property in the Town of Sylvan, County of Cass, Minn., for the Year 1926.
Unplatted Real Estate - Assessed at 33 1/3 per cent of True and Full Value.

NAME OF OWNER	No. of School Dist.	DESCRIPTION	Sec. or Lot	Twp. or Block	Range	Number of Acres	ASSESSOR'S VALUATIONS				EQUALIZED VALUATIONS		
							True and Full Value of Lands, Structures and Improvements Dollars	STRUCTURES AND IMPROVEMENTS True and Full Value of Buildings and Other Structures Dollars	True and Full Value of Machinery Permanently Attached to Real Estate Dollars	Total True and Full Value of Lands Including all Structures, Improvements and Machinery Dollars	Assessed Value of Lands Including all Structures, Improvements and Machinery Dollars	Assessed Value as Equalized by Board of Review Dollars	Assessed Value as Equalized by the County Board Dollars
		NE 1/4 of NE 1/4											
		NW 1/4 of NE 1/4											
		SW 1/4 of NE 1/4											
		SE 1/4 of NE 1/4											
		NE 1/4 of NW 1/4											
		NW 1/4 of NW 1/4											
		SW 1/4 of NW 1/4											
		SE 1/4 of NW 1/4											
		NE 1/4 of SW 1/4											
		NW 1/4 of SW 1/4											
		SW 1/4 of SW 1/4											
		SE 1/4 of SW 1/4											
		NE 1/4 of SE 1/4											
		NW 1/4 of SE 1/4											
		SW 1/4 of SE 1/4											
		SE 1/4 of SE 1/4											

PLATTED

PERSONAL

Assessor's Return of Taxable Real Property in the Town of Sylvan, County of Cass, Minn., for the Year 1926.

Unplatted Real Estate - Assessed at 33 1/3 per cent of True and Full Value.

NAME OF OWNER	No. of School Dist.	DESCRIPTION	ASSESSOR'S VALUATIONS					EQUALIZED VALUATIONS				
			Sec. or Lot	Twp. or Block	Range	Number of Acres	True and Full Value of Land Exclusive of Structures and Improvements	STRUCTURES AND IMPROVEMENTS	Total True and Full Value of Land Including all Structures, Improvements and Machinery	Assessed Value of Land Including all Structures, Improvements and Machinery	Assessed Value as Equalized by Board of Review	Assessed Value as Equalized by the County Board
		NE 1/4 of NE 1/4										
		NW 1/4 of NE 1/4										
		SW 1/4 of NE 1/4										
		SE 1/4 of NE 1/4										
		NE 1/4 of NW 1/4										
		NW 1/4 of NW 1/4										
		SW 1/4 of NW 1/4										
		SE 1/4 of NW 1/4										
		NE 1/4 of SW 1/4										
		NW 1/4 of SW 1/4										
		SW 1/4 of SW 1/4										
		SE 1/4 of SW 1/4										
		NE 1/4 of SE 1/4										
		NW 1/4 of SE 1/4										
		SW 1/4 of SE 1/4										
		SE 1/4 of SE 1/4										

Assessor's Return of Taxable Real Property in the Town of Sylvan, County of Cass, Minn., for the Year 1926.

Platted Real Estate - Assessed at 40 per cent of True and Full Value. Note - Attached Machinery Assessed at 33 1/3 per cent of True and Full Value.

NAME OF OWNER	No. of School Dist.	DESCRIPTION	ASSESSOR'S VALUATIONS					EQUALIZED VALUATIONS				
			Sec. or Lot	Twp. or Block	Range	Number of Acres	True and Full Value of Land Exclusive of Structures and Improvements	STRUCTURES AND IMPROVEMENTS	Total True and Full Value of Land Including all Structures, Improvements and Machinery	Assessed Value of Land Including all Structures, Improvements and Machinery	Assessed Value as Equalized by Board of Review	Assessed Value as Equalized by the County Board
		Village of Sylvan										
Geo. Ramsey	#1		1	1			10	300	310	124		124
"			2				10		10	4		4
"			3				10		10	4		4
"			4				10		10	4		4
"			5				10		10	4		4
"			6				10		10	4		4
"			7				10		10	4		4
"			8				10		10	4		4
J. M. Tollefson			9				10		10	4		4
"			10				10		10	4		4
Andrew N. Lee			11				10		10	4		4
"			12				10		10	4		4
"			13				10		10	4		4
"			14				10		10	4		4
"			15				10		10	4		4
"			16				10		10	4		4
Andrew Olson			17				10		10	4		4
Wm. Garwell			18				10		10	4		4
Andrew Olson			19				10		10	4		4
"			20				10		10	4		4
Chas. W. Johnson			21				10		10	4		4
"			22				10		10	4		4
							10	40	50	20		20
							220	340	660	224		224

PLATTED

PERSONAL

Assessor's Return of Taxable Real Property in the Town of Sylvan, County of Cass, Minn., for the Year 1926.

Platted Real Estate—Assessed at 40 per cent of True and Full Value.

Note—Attached Machinery Assessed at 33 1/3 per cent of True and Full Value.

Table with columns: NAME OF OWNER, No. of School Dist., SUBDIVISION, Sec. or Lot, Twp. or Block, Range, Number of Acres, True and Full Value of Land, STRUCTURES AND IMPROVEMENTS, Total True and Full Value, Assessed Value of Land, Assessed Value as Equalized by Board of Review, Assessed Value as Equalized by the County Board, Assessed Value as Equalized by the Minnesota Tax Commission.

Assessor's Return of Taxable Real Property in the Town of Sylvan, County of Cass, Minn., for the Year 1926.

Platted Real Estate—Assessed at 40 per cent of True and Full Value.

Note—Attached Machinery Assessed at 33 1/3 per cent of True and Full Value.

Table with columns: NAME OF OWNER, No. of School Dist., SUBDIVISION, Sec. or Lot, Twp. or Block, Range, Number of Acres, True and Full Value of Land, STRUCTURES AND IMPROVEMENTS, Total True and Full Value, Assessed Value of Land, Assessed Value as Equalized by Board of Review, Assessed Value as Equalized by the County Board, Assessed Value as Equalized by the Minnesota Tax Commission.

Assessor's Return of Taxable Real Property in the Town of Sylvan, County of Cass, Minn., for the Year 1926.

Platted Real Estate—Assessed at 40 per cent of True and Full Value. Note—Attached Machinery Assessed at 33 1/3 per cent of True and Full Value.

Table with columns: NAME OF OWNER, No. of School Dist., DESCRIPTION, ASSESSOR'S VALUATIONS (True and Full Value of Lands, Structures and Improvements, etc.), and EQUALIZED VALUATIONS. Includes handwritten entries for Roscoe E. Carylson #1 and subdivisions like 'Carylson's Sylvan Park'.

Assessor's Return of Taxable Real Property in the Town of Sylvan, County of Cass, Minn., for the Year 1926.

Platted Real Estate—Assessed at 40 per cent of True and Full Value. Note—Attached Machinery Assessed at 33 1/3 per cent of True and Full Value.

Table with columns: NAME OF OWNER, No. of School Dist., DESCRIPTION, ASSESSOR'S VALUATIONS, and EQUALIZED VALUATIONS. Includes handwritten entries for Roscoe E. Carylson #1 and subdivisions like 'Carylson's Sylvan Park'.

PLATTED

PERSONAL

Assessor's Return of Taxable Real Property in the Town of Sylvan, County of Cass, Minn., for the Year 1926.

Platted Real Estate - Assessed at 40 per cent of True and Full Value. Note - Attached Machinery Assessed at 33 1/3 per cent of True and Full Value.

Table with columns: NAME OF OWNER, No. of School Dist., DESCRIPTION, SUBDIVISION, Sec. or Lot, Twp. or Block, Range, Number of Acres, ASSESSOR'S VALUATIONS (True and Full Value of Land, Structures and Improvements, Total True and Full Value of Land, Assessed Value of Land, Assessed Value as Equalized by Board of Review, Assessed Value as Equalized by County Board, Assessed Value as Equalized by Minnesota Tax Commission), EQUALIZED VALUATIONS.

Assessor's Return of Taxable Real Property in the Town of Sylvan, County of Cass, Minn., for the Year 1926.

Platted Real Estate - Assessed at 40 per cent of True and Full Value. Note - Attached Machinery Assessed at 33 1/3 per cent of True and Full Value.

Table with columns: NAME OF OWNER, No. of School Dist., DESCRIPTION, SUBDIVISION, Sec. or Lot, Twp. or Block, Range, Number of Acres, ASSESSOR'S VALUATIONS (True and Full Value of Land, Structures and Improvements, Total True and Full Value of Land, Assessed Value of Land, Assessed Value as Equalized by Board of Review, Assessed Value as Equalized by County Board, Assessed Value as Equalized by Minnesota Tax Commission), EQUALIZED VALUATIONS.

PLATTED

PERSONAL

Assessor's Return of Taxable Real Property in the Town of Sylvan, County of Cass, Minn., for the Year 1926.

Platted Real Estate—Assessed at 40 per cent of True and Full Value. Note—Attached Machinery Assessed at 33 1/3 per cent of True and Full Value.

Table with columns: NAME OF OWNER, No. of School Dist., SUBDIVISION, DESCRIPTION, ASSESSOR'S VALUATIONS (True and Full Value of Land, Structures and Improvements, Total True and Full Value of Land, Assessed Value of Land, Assessed Value as Equalized by Board of Review, Assessed Value as Equalized by the County Board, Assessed Value as Equalized by the Minnesota Tax Commission), EQUALIZED VALUATIONS.

Assessor's Return of Taxable Real Property in the Town of Sylvan, County of Cass, Minn., for the Year 1926.

Platted Real Estate—Assessed at 40 per cent of True and Full Value. Note—Attached Machinery Assessed at 33 1/3 per cent of True and Full Value.

Table with columns: NAME OF OWNER, No. of School Dist., SUBDIVISION, DESCRIPTION, ASSESSOR'S VALUATIONS (True and Full Value of Land, Structures and Improvements, Total True and Full Value of Land, Assessed Value of Land, Assessed Value as Equalized by Board of Review, Assessed Value as Equalized by the County Board, Assessed Value as Equalized by the Minnesota Tax Commission), EQUALIZED VALUATIONS.

PLATTED

PERSONAL

Assessor's Return of Taxable Real Property in the Town of Sylvan, County of Cass, Minn., for the Year 1926.

Platted Real Estate—Assessed at 40 per cent of True and Full Value. Note—Attached Machinery Assessed at 33 1/3 per cent of True and Full Value.

NAME OF OWNER	No. of School Dist.	DESCRIPTION	Sec. or Lot	Twp. or Block	Range	Number of Acres	ASSESSOR'S VALUATIONS				EQUALIZED VALUATIONS		
							True and Full Value of Lands Exclusive of Structures and Improvements	STRUCTURES AND IMPROVEMENTS True and Full Value of Buildings and Other Structures	True and Full Value of Machinery Permanently Attached to Real Estate	Total True and Full Value of Lands Including all Structures, Improvements and Machinery	Assessed Value Including all Structures, Improvements and Machinery	Assessed Value as Equalized by Board of Review	Assessed Value as Equalized by the County Board
Andrew Schilke	#1	Sylvan Beach	45	1			80		80	32			32
"			46				80		80	32			32
"			47				80		80	32			32
"			48				80		80	32			32
"			49				80		80	32			32
"			50				80		80	32			32
"			51				80		80	32			32
"			52				80		80	32			32
"			53				80		80	32			32
"			54				80		80	32			32
"			55				80		80	32			32
"			56				80		80	32			32
							960		960	384			384

Assessor's Return of Taxable Real Property in the Town of Sylvan, County of Cass, Minn., for the Year 1926.

Platted Real Estate—Assessed at 40 per cent of True and Full Value. Note—Attached Machinery Assessed at 33 1/3 per cent of True and Full Value.

NAME OF OWNER	No. of School Dist.	DESCRIPTION	Sec. or Lot	Twp. or Block	Range	Number of Acres	ASSESSOR'S VALUATIONS				EQUALIZED VALUATIONS			
							True and Full Value of Lands Exclusive of Structures and Improvements	STRUCTURES AND IMPROVEMENTS True and Full Value of Buildings and Other Structures	True and Full Value of Machinery Permanently Attached to Real Estate	Total True and Full Value of Lands Including all Structures, Improvements and Machinery	Assessed Value Including all Structures, Improvements and Machinery	Assessed Value as Equalized by Board of Review	Assessed Value as Equalized by the County Board	Assessed Value as Equalized by the Minnesota Tax Commission
Robert F. Sweet.		Carlyon's Sylvan Park E 1/2 11				3 50	25	200		225	90		90	
J. Walter Anderson		" " E 1/2 7				2	50	200		250	100		100	
A. C. Lundgren		" " N 1/2 14				2	40	700		740	296		296	
Peter Schöck		" " E 1/4 15				1	40	600		640	256		256	
Peter Schöck owns E 1/2 of 15 See "Dead"														
							850	155	1700		1855	742		742

PLATTED

PERSONAL