

Assessment & Tax List - 1963
Sylvan

Assessment of

COLLECTIONS OF TAXES OF 196 OF CASS COUNTY, MINNESOTA

NAME OF OWNER	FUNDS	MARCH SETTLEMENT	JUNE SETTLEMENT	NOV. SETTLEMENT	Amount Collected from Nov. 1964 to First Monday in Jan. 1965	REDUCTIONS	Total Reductions and Collected	BALANCE UNCOLLECTED	ADDITIONS	Total Uncollected to First Monday in January, 1965
		1964	1964	1964						
	State-Non-Homestead,	7816	164466	47745	881					
	State-Homestead,	8740	73324	51728	1088					
	County Revenue,	39885	281633	198717	4172					
	County Road and Bridge,	25316	178377	126129	2648					
	County Welfare,	75327	530761	375297	7879					
	County Bond and Interest,	2430	17124	12108	254					
	Co. Nurse	1114	7849	5549	117					
	P&RA	6544	46110	32604	683					
	Civil Dep.	228	1605	1136	24					
	Town Revenue,	5976	42097	29766	625					
	Town Road and Bridge,	18633	131286	92831	1949					
	Town State Loan,									
	Fire	6329	44594	31533	662					
	School Local 1 Mill,									
	School Special,	39109	359251	279322	4499					
	School State Loan,									
	Deficiency	84897	598187	422974	8899					
	Tuition									
	Transportation									
	C.O.	8721	61450	43451	912					
	Beq	10076	70994	50199	1054					
	P&RA	2240	15787	11163	234					
	B+S	34265	241433	170716	3583					
	NOEA	1455	10257	7252	153					
	C.H. Beq	2532	17838	12614	265					
	Agri Assn	608	4281	3027	64					
	Transp	1494	16524	7442	156					
		383735	2808628	2013303	40781					

MARCH SETTLEMENT	School District No.	LOCAL 1 MILL	SPECIAL	STATE LOAN	Deficiency	C.O.	Beq	P&RA	B+S	NOEA	TOTALS
	116a		24181		64873	6664	7700	1712	26183	1112	132425
	116na		14928		20024	2057	2376	528	8082	343	48338
	Totals		39109		84897	8721	10076	2240	34265	1455	180763
	116a		86692		332578	23892	27603	6138	93871	3988	474762
	116na		272559		365609	37558	43391	9649	147562	6269	882597
	Totals		359251		598187	61450	70994	15787	241433	10257	1357359
	116a		36002		96585	9922	11463	2549	38983	1656	197160
	116na		243320		326389	33529	38736	8614	131733	5596	787917
	Totals		279322		422974	43451	50199	11163	170716	7252	985077
	116a		2122		5692	585	676	150	2297	98	11620
	116na		2377		3187	327	378	84	1286	55	7694
	Totals		4499		8879	912	1054	234	3583	153	19314
	School District No.										
	Totals										
	School District No.										
	Totals										

Village of...
 133-30
 1-11-65
 1-11-65
 1-11-65

Assessment Roll and Tax List of Real Property in the Town of Sylvan

* Indicate Type of Property: R-Residential, C-Commercial, I-Industrial, U-Utility, F-Farm, L-Lakeshore, T-Timber, M-Mineral

Table with columns: IN WHOSE NAME ASSESSED, DESCRIPTION OF PROPERTY, TRUE AND FULL VALUATIONS, ASSESSED VALUATIONS, and FINAL EQUALIZED VALUE. Includes entries for Minnesota Power + Light Co., Albert A. Dykema, and Mary Larsen.

Cass County, Minnesota, for Taxes for the Year 1963.

Table with columns: VALUATIONS BY SCHOOL DISTRICTS AS EQUALIZED BY DEPARTMENT OF TAXATION, Tax Including State Homestead, SPECIAL TAXES, TOTAL TAXES, PAID, WHEN PAID, and REMARKS. Includes tax amounts and payment dates for various properties.

Assessment Roll and Tax List of Real Property in the Town of Sylvan

Form 500 MILLER-DAVIS CO., MINNEAPOLIS

* Indicate Type of Property: R-Residential, C-Commercial, I-Industrial, U-Utility, F-Farm, L-Lakeshore, T-Timber, M-Mineral

Table with columns: IN WHOSE NAME ASSESSED, DESCRIPTION OF PROPERTY, TRUE AND FULL VALUATIONS, ASSESSED VALUATIONS, and FINAL EQUALIZED VALUE. Includes entries for Minnesota Power & Light Co., State of Minnesota, Merwin C. + Marjorie S. Green, Homo A. + Emily J. Jindall, Harry Sechler, Roger Robert + Joan Marie Peterson, and Gull River Cemetery Association.

3135

Cass County, Minnesota, for Taxes for the Year 1963.

Table with columns: VALUATIONS BY SCHOOL DISTRICTS AS EQUALIZED BY DEPARTMENT OF TAXATION, Tax including State Homestead, State Tax on Non-Homestead, SPECIAL TAXES, TOTAL TAXES, PAID, WHEN PAID, Number of Receipt, March Settlement 1964, June Settlement 1964, November Settlement 1964, Collections to First Monday in January 1965, Delinquent on First Monday in January 1965, Total Delinquent Tax and Penalty, REMARKS. Includes handwritten notes and calculations at the bottom.

Handwritten calculations: 186 = 188, 60 = 60, 246 = 248

7920

4627

3293

Vertical text on the right edge of the page, including 'VILLAGE OF SYLVAN' and 'CASS COUNTY, MINN.'.

Assessment Roll and Tax List of Real Property in the Town of Sylvan

* Indicate Type of Property: R-Residential, C-Commercial, I-Industrial, U-Utility, F-Farm, L-Lakeshore, T-Timber, M-Mineral

Form 502 MILLER-DAVIS CO., MINNEAPOLIS

Table with columns: IN WHOSE NAME ASSESSED, DESCRIPTION OF PROPERTY, TRUE AND FULL VALUATIONS, ASSESSED VALUATIONS, and FINAL EQUALIZED VALUE. Includes handwritten entries for Barker, Peterson, and Woodhouse.

596 96

Cass County, Minnesota, for Taxes for the Year 1963.

Table with columns: VALUATIONS BY SCHOOL DISTRICTS AS EQUALIZED BY DEPARTMENT OF TAXATION, Tax including State Homestead, SPECIAL TAXES, TOTAL TAXES, PAID, WHEN PAID, Number of Receipt, March Settlement, June Settlement, November Settlement, Collections to First Monday in January 1965, Delinquent on First Monday in January 1965, Total Delinquent Tax and Penalty, and REMARKS. Includes handwritten entries for tax payments and dates.

Handwritten calculations: 1125 + 720 = 1845, 120 = 840, 1845 - 840 = 1005, 53948 + 3808 = 57756, 58504

Vertical text on the right edge of the page: VILLAGES OF SYLVAN, 133-30, MINNESOTA POWER & LIGHT CO., MINNESOTA POWER & LIGHT CO., MINNESOTA POWER & LIGHT CO.

Assessment Roll and Tax List of Real Property in the Town of Sylvan

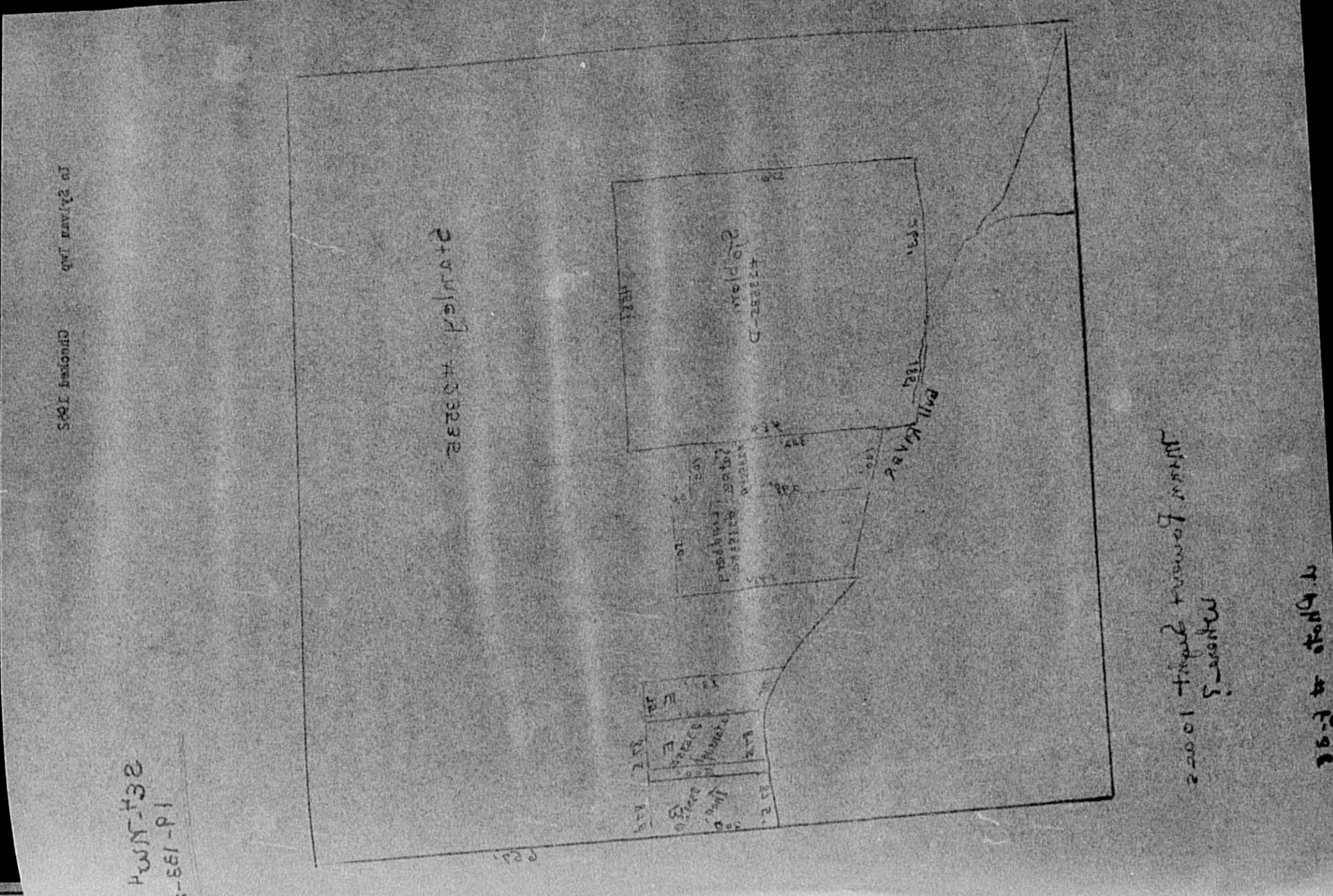


Table with columns: IN WHOSE NAME ASSESSED, SUBDIVISION, Sec. of Lot, Town or Block, Reg., Number of Acres of Land, No. School District, Ind. Value of Home, Agri. Use, etc. Rows include Minnesota Power + Light Co., J. F. + Ellen J. Marlow, C. A. + Verna Grace Stanley, Arnrwald C. + Dorothy Satre, Roy D. + Eva L. Thon, L. B. + Bonnie Lindberg, William + Faye Sjoblom, James A. + Shirley Kavanagh.

(Continued)

324 01

Cass County, Minnesota, for Taxes for the Year 1963.

Table with columns: SOLD FOR TAXES, VALUATIONS BY SCHOOL DISTRICTS AS EQUALIZED BY DEPARTMENT OF TAXATION, Tax Including State Homestead, SPECIAL TAXES, TOTAL TAXES, PAID, WHEN PAID, Number of Receipt, March Settlement, June Settlement, November Settlement, Penalty, Collections to First Monday in January 1965, Delinquent on First Monday in January 1965, Total Delinquent Tax and Penalty, REMARKS. Rows include property details and tax payment information.

1139 164 303 139 1425 1689 1778 8860 46822 55682 1458 57140

319 50

21978

3013

Assessment Roll and Tax List of Real Property in the Town of Sylvan

* Indicate Type of Property: R-Residential, C-Commercial, I-Industrial, U-Utility, F-Farm, L-Lakeshore, T-Timber, M-Mineral

Form SCD MILLER-DAVIS CO., MINNEAPOLIS

Table with columns: IN WHOSE NAME ASSESSED, SUBDIVISION, No. School District, Indicate Homestead, Agri or Sea, Indicate Type of Property, TRUE AND FULL VALUATIONS, ASSESSED VALUATIONS, TOTAL ASSESSED VALUE, Total Assessed Value as Equalized by the Board of Review, FINAL EQUALIZED VALUE.

Cass County, Minnesota, for Taxes for the Year 1963.

Table with columns: SOLD FOR TAXES, VALUATIONS BY SCHOOL DISTRICTS AS EQUALIZED BY DEPARTMENT OF TAXATION, Tax Including State Homestead, State Tax on Non-Homestead, SPECIAL TAXES, TOTAL TAXES, PAID, WHEN PAID, Number of Receipt, March Settlement, June Settlement, November Settlement, Collections to First Monday in January 1965, Delinquent on First Monday in January 1965, Total Delinquent Tax and Penalty, REMARKS.

Assessment Roll and Tax List of Real Property in the Town of Sylvan

* Indicate Type of Property: R-Residential, C-Commercial, I-Industrial, U-Utility, F-Farm, L-Lakeshore, T-Timber, M-Mineral

Table with columns: IN WHOSE NAME ASSESSED, DESCRIPTION OF PROPERTY, TRUE AND FULL VALUATIONS, ASSESSED VALUATIONS, and FINAL EQUALIZED VALUE. Rows include NAVILLUS LAND CO., NORTHWEST PAPER CO., and CUYUNA RANGE POWER CO.

Cass County, Minnesota, for Taxes for the Year 1963.

Table with columns: VALUATIONS BY SCHOOL DISTRICTS AS EQUALIZED BY DEPARTMENT OF TAXATION, TAXES, PAID, WHEN PAID, and REMARKS. Includes handwritten entries for taxes and payments.

Assessment Roll and Tax List of Real Property in the Town of Sylvan

* Indicate Type of Property: R-Residential, C-Commercial, I-Industrial, U-Utility, F-Farm, L-Lakeshore, T-Timber, M-Mineral

Form 5CD MILLER-DAVIS CO., MINNEAPOLIS

Table with columns: IN WHOSE NAME ASSESSED, DESCRIPTION OF PROPERTY, TRUE AND FULL VALUATIONS, ASSESSED VALUATIONS, and FINAL EQUALIZED VALUE. Includes entries for Harold Carlson, Ole Peterson, Albert E. + Vernie M. Root, and Charles Johnson.

(Continued)

504 45

Cass County, Minnesota, for Taxes for the Year 1963.

Table with columns: VALUATIONS BY SCHOOL DISTRICTS AS EQUALIZED BY DEPARTMENT OF TAXATION, Tax Including State Homestead, State Tax on Non-Homestead, SPECIAL TAXES, TOTAL TAXES, PAID, WHEN PAID, Number of Receipt, March Settlement 1964, June Settlement 1964, November Settlement 1964, Collections to First Monday in January 1965, Delinquent on First Monday in January 1965, Total Delinquent Tax and Penalty, and REMARKS. Includes entries for Harold Carlson, Ole Peterson, and Charles Johnson.

Handwritten notes: 37740, 2632

Vertical text on the right edge: 132-30, 133-30, 134-30, 135-30, 136-30, 137-30, 138-30, 139-30, 140-30, 141-30, 142-30, 143-30, 144-30, 145-30, 146-30, 147-30, 148-30, 149-30, 150-30

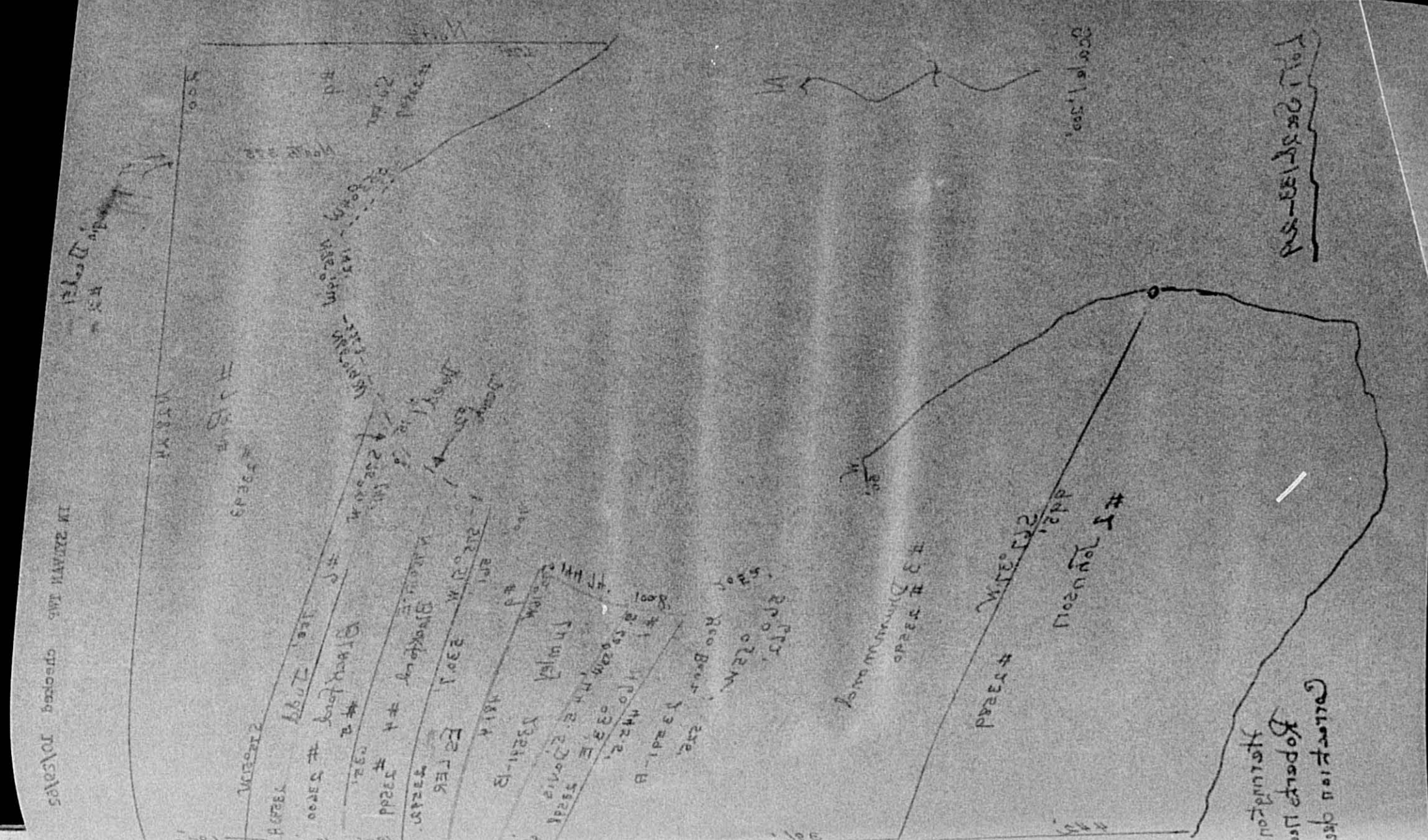
Assessment Roll and Tax List

Property in the Town of Sylvan

Indicate Type of Property: R-Residential, C-Commercial, I-Industrial, U-Utility, F-Farm, L-Lakeshore, T-Timber, M-Mineral

Table with columns: IN WHOSE NAME ASSESSED, DESCRIPTION OF PROPERTY, TRU AND FULL VALUATIONS, ASSESSED VALUATIONS, FINAL EQUALIZED VALUE. Includes entries for Charles R. Johnson, Arthur C. & Gladys M. Drummonds, Geo. Benz & Sons, Inc., L. Marlene Esker, Loduska Lumley, George W. & Agnes I. Prine, Harry C. & Cecile B. Judd, Clifford C. & Gladys D. Suter, Elizabeth Davis, Y. C. & Lorraine Blackford.

2781



Cass County, Minnesota, for Taxes for the Year 1963.

Table with columns: SOLD FOR TAXES, VALUATIONS BY SCHOOL DISTRICTS AS EQUALIZED BY DEPARTMENT OF TAXATION, Tax including State Homestead, State Tax on Non-Homestead, SPECIAL TAXES, TOTAL TAXES, PAID, WHEN PAID, Number of Receipt, March Settlement 1964, June Settlement 1964, November Settlement 1964, Collections to First Monday in January 1965, Delinquent on First Monday in January 1965, Total Delinquent Tax and Penalty, REMARKS. Includes entries for 1 SOLD FOR TAXES, 2, 3 SOLD FOR TAXES, 4, 5, 6, 7, 8, 9, 10, 11 PAID IN FULL.

1339, 4791-891, 39152, 55038, 2036, 94190, 96226

20550, 33697, 37550, 4429

Assessment Roll and Tax List of Real Property in the Town of Sylvan

* Indicate Type of Property: R-Residential, C-Commercial, I-Industrial, U-Utility, F-Farm, L-Lakeshore, T-Timber, M-Mineral

Form SCD MILLER-DAVIS CO., MINNEAPOLIS

Table with columns: IN WHOSE NAME ASSESSED, DESCRIPTION OF PROPERTY, TRUE AND FULL VALUATIONS, ASSESSED VALUATIONS, and FINAL EQUALIZED VALUE. Includes entries for John E. + Vivian L. Eastman, Dewey McMain, and Northwest Paper Co.

Cass County, Minnesota, for Taxes for the Year 1963.

Table with columns: VALUATIONS BY SCHOOL DISTRICTS AS EQUALIZED BY DEPARTMENT OF TAXATION, Tax including State Homestead, SPECIAL TAXES, TOTAL TAXES, PAID, WHEN PAID, Number of Receipt, March Settlement, June Settlement, November Settlement, Collections to First Monday in January, Delinquent on First Monday in January, Total Delinquent Tax and Penalty, and REMARKS. Includes handwritten notes and calculations.

Assessment Roll and Tax List of Real Property in the Town of Sylvan

* Indicate Type of Property: R-Residential, C-Commercial, Industrial, U-Utility, F-Farm, L-Lakeshore, T-Timber, M-Mineral

Form 500 - MILLER-DAVIS CO., MINNEAPOLIS

Table with columns: IN WHOSE NAME ASSESSED, SUBDIVISION, No. School District, Indicate Homestead, Agr. or Recr., Indicate Type of Property, TRUE AND FULL VALUATIONS (LAND, BUILDINGS, MACHINERY, TOTAL), ASSESSED VALUATIONS (RURAL, ALL OTHER), TOTAL ASSESSED VALUE, FINAL EQUALIZED VALUE.

Cass County, Minnesota, for Taxes for the Year 1963.

Table with columns: SOLD FOR TAXES, VALUATIONS BY SCHOOL DISTRICTS AS EQUALIZED BY DEPARTMENT OF TAXATION, Tax including State Homestead, State Tax on Non-Homestead, SPECIAL TAXES, TOTAL TAXES, PAID, WHEN PAID, Number of Receipt, March Settlement, June Settlement, November Settlement, Penalty, Collections to First Monday in January 1965, Delinquent on First Monday in January 1965, Total Delinquent Tax and Penalty, REMARKS.

Assessment Roll and Tax List of Real Property in the Town of Sylvan

* Indicate Type of Property: R-Residential, C-Commercial, I-Industrial, U-Utility, F-Farm, L-Lakeshore, T-Timber, M-Mineral

Form 50D - MILLER-DAVIS CO., MINNEAPOLIS

Table with columns: IN WHOSE NAME ASSESSED, DESCRIPTION OF PROPERTY, TRUE AND FULL VALUATIONS, ASSESSED VALUATIONS, and FINAL EQUALIZED VALUE. Includes rows for various subdivisions and a 'GOVT LOT 3' entry.

Cass County, Minnesota, for Taxes for the Year 1963.

Table with columns: VALUATIONS BY SCHOOL DISTRICTS AS EQUALIZED BY DEPARTMENT OF TAXATION, Tax including State Homestead, State Tax on Non-Homestead, SPECIAL TAXES, TOTAL TAXES, PAID, WHEN PAID, Number of Receipt, March Settlement 1964, June Settlement 1964, Penalty, November Settlement 1964, Penalty, Collections to First Monday in January 1965, Delinquent on First Monday in January 1965, Total Delinquent Tax and Penalty, and REMARKS.

Vertical text on the right edge of the page, including 'TOWN OF SYLVAN' and 'CASS COUNTY, MINNESOTA'.

Assessment Roll and Tax List of Real Property in the Town of Sylvan

Indicate Type of Property: R-Residential, C-Commercial, I-Industrial, U-Utility, F-Farm, L-Laboratory, T-Timber, N-Natural

Form 500 MILLER-DAVIS CO., MINNEAPOLIS

Table with columns: IN WHOSE NAME ASSESSED, SUBDIVISION, Sec. or Lot, Town or Block, Rng., Acres of Land, No. School District, Indicate Homestead Yes or No, Agri. or Non-Agri. Recr. Yes or No, Indicate Type of Property, and a list of property owners and their respective lots.

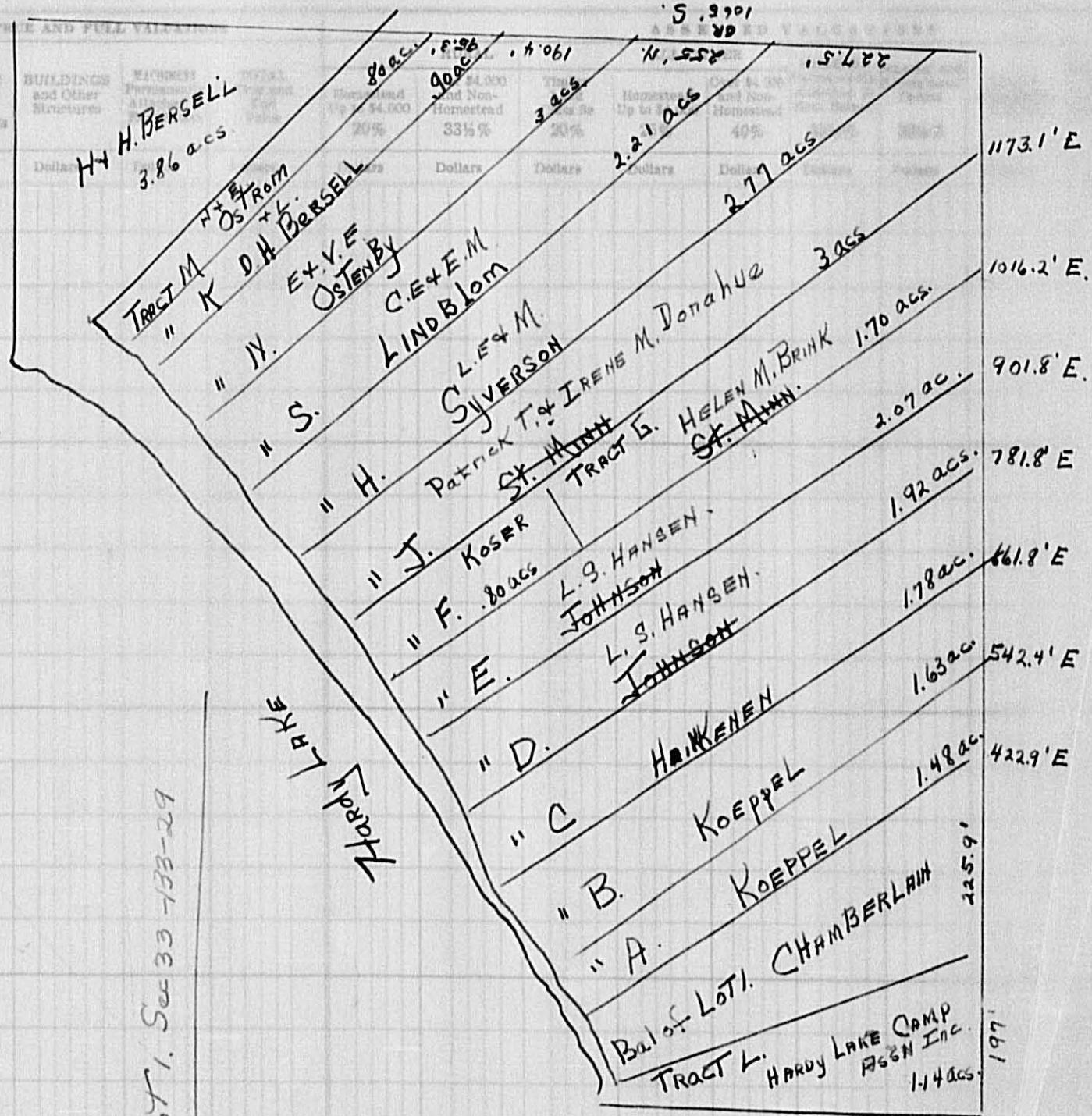
(Continued)

3025

CHECKED 10/23/63

TWP SYLVAN TWP

LOT 1, Sec 33-188-29



Cass County, Minnesota, for Taxes for the Year 1963.

Table with columns: VALUATIONS BY SCHOOL DISTRICTS AS EQUALIZED BY DEPARTMENT OF TAXATION, Tax including State Homestead, State Tax on Non-Homestead, SPECIAL TAXES, TOTAL TAXES, PAID, WHEN PAID, Number of Receipt, March Settlement 1964, June Settlement 1964, Penalty, November Settlement 1964, Penalty, Collections to First Monday in January 1965, Delinquent on First Monday in January 1965, Total Delinquent Tax and Penalty, and REMARKS. Includes handwritten notes like 'SOLD FOR TAXES' and 'PAID IN FULL'.

VALUATION OF SYLVAN

133-33

ALBERT'S 1ST ADDY

ALBERT'S 2ND

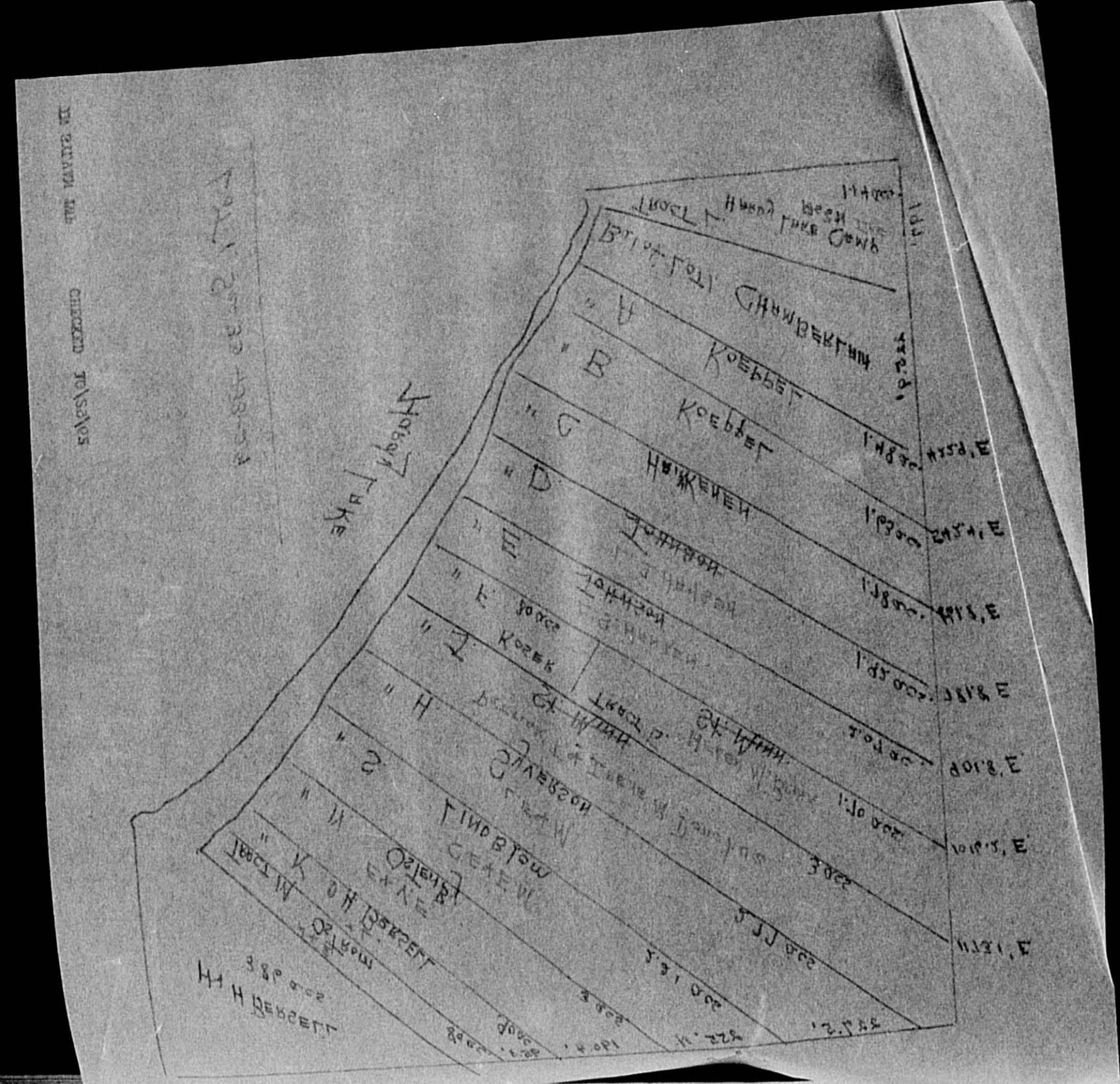
ALBERT'S 3RD

Assessment Roll and Tax List of Real Property in the Town of Sylvan

Indicate Type of Property: R-Residential, C-Commercial, I-Industrial, U-Utility, F-Farm, L-Lakeshore, T-Timber, M-Mineral

Table with columns: IN WHOSE NAME ASSESSED, DESCRIPTION OF PROPERTY, TRUE AND FULL VALUATIONS, ASSESSED VALUATIONS, and FINAL EQUALIZED VALUE. Includes entries for Michael A. & Olga A. Chamberlain, Joseph Koepfl, Edward & Susan Heikkinen, etc.

(Continued)



Cass County, Minnesota, for Taxes for the Year 1963.

Table with columns: SOLD FOR TAXES, VALUATIONS BY SCHOOL DISTRICTS AS EQUALIZED BY DEPARTMENT OF TAXATION, TAXES, PAID, WHEN PAID, Number of Receipt, March Settlement, June Settlement, November Settlement, Collections to First Monday in January, Delinquent on First Monday in January, Total Delinquent Tax and Penalty, and REMARKS. Includes entries for Balance Paid, PAID IN FULL APR 29 1964, etc.

Assessment Roll and Tax List of Real Property in the Town of Sylvan

In Twp Sylvan, R-Residential, C-City, I-Industrial, U-Utility, F-Farm, L-Lakeshore, T-Timber, M-Mineral

Form 502 MILLER-GAVIS CO., MINNEAPOLIS

Table with columns: IN WHOSE NAME ASSESSED, SUBDIVISION, Sec. or Lot, Town or Block, Rng., Number of Acres of Land, No. School District, Indicate Home-lead, Indicate Recr., Indicate Type of Property. Lists property owners like Adolph H. + Imogene K. Dahl, Ralph L. + Dorothy M. Dixon, etc.

(Continued)

1183



BAL. of Lot 2 - 2.33 ac - Bjornstad, - Olaf

1183 acs. 3.02 acs Road

Cass County, Minnesota, for Taxes for the Year 1963.

Table with columns: SOLD FOR TAXES, VALUATIONS BY SCHOOL DISTRICTS AS EQUALIZED BY DEPARTMENT OF TAKATION, Tax Including State Homestead, State Tax on Non-Homestead, SPECIAL TAXES, TOTAL TAXES, PAID, WHEN PAID, Number of Receipt, March Settlement 1964, June Settlement 1964, Penalty, November Settlement 1964, Collections to First Monday in January 1965, Delinquent on First Monday in January 1965, Total Delinquent Tax and Penalty, REMARKS. Includes handwritten notes and calculations.

Handwritten calculations: 432 = 432, 42 = 884, 474 = 1318

Handwritten totals: 24682, 15044, 39726, 786, 40512

Handwritten totals: 36670, 3842

Assessment Roll and Tax List of Real Property in the Town of Sylvan

* Indicate Type of Property: R-Residential, C-Commercial, I-Industrial, U-Utility, F-Farm, L-Lakeshore, T-Timber, M-Mineral

Form SCD - MILLER-DAVIS CO., MINNEAPOLIS

Table with columns: IN WHOSE NAME ASSESSED, DESCRIPTION OF PROPERTY, TRUE AND FULL VALUATIONS, ASSESSED VALUATIONS, and FINAL EQUALIZED VALUE. Includes handwritten entries for Hardy Lake Camp Ass'n, Inc., Ole Peterson, John O. Ferris, Gordon K. Rasmuson, Alger Budd Peterson, Morris G. Rasmuson, John E. & Vivian L. Eastman, L. H. Rasmuson, Morris L. & Anne M. Rasmuson, and A. J. Staub.

(Continued)

Cass County, Minnesota, for Taxes for the Year 1963.

Table with columns: VALUATIONS BY SCHOOL DISTRICTS AS EQUALIZED BY DEPARTMENT OF TAXATION, Tax Including State Homestead, State Tax on Non-Homestead, SPECIAL TAXES, TOTAL TAXES, PAID, WHEN PAID, Number of Receipt, March Settlement 1964, June Settlement 1964, Penalty, November Settlement 1964, Penalty, Collections to First Monday in January 1965, Penalty, Delinquent on First Monday in January 1965, Total Delinquent Tax and Penalty, and REMARKS. Includes handwritten notes and calculations.

Handwritten summary calculations: 4 526, 195, 631; 4 97 = 623, 515 = 620, 612 = 1243; 18450, 19424, 37874; 554, 38428.

Assessment Roll and Tax List of Real Property in the Town of Sylvan

* Indicate Type of Property: R-Residential, C-Commercial, I-Industrial, U-Utility, F-Farm, L-Lakeshore, T-Timber, M-Mineral

Form SCD MILLER-DAVIS CO., MINNEAPOLIS

Table with columns: IN WHOSE NAME ASSESSED, DESCRIPTION OF PROPERTY, TRUE AND FULL VALUATIONS, ASSESSED VALUATIONS, and FINAL EQUALIZED VALUE. Includes handwritten entries for Alvin O. Johnson, Adolph Hagen, John Hagen, Hjalmer H. Linman, and Clarence B. Linman.

Cass County, Minnesota, for Taxes for the Year 1963.

Table with columns: VALUATIONS BY SCHOOL DISTRICTS AS EQUALIZED BY DEPARTMENT OF TAXATION, Tax Including State Homestead, State Tax on Non-Homestead, SPECIAL TAXES, TOTAL TAXES, PAID, WHEN PAID, Number of Receipt, March Settlement, June Settlement, November Settlement, Collections to First Monday in January, Delinquent on First Monday in January, Total Delinquent Tax and Penalty, and REMARKS. Includes handwritten entries for 1963 taxes and a 'PAID IN FULL' note.

Assessment Roll and Tax List of Real Property in the Town of Sylvan

* Indicate Type of Property: R-Residential, C-Commercial, Industrial, U-Utility, F-Farm, L-Lakeshore, T-Timber, M-Mineral

Table with columns: IN WHOSE NAME ASSESSED, DESCRIPTION OF PROPERTY, TRUE AND FULL VALUATIONS, ASSESSED VALUATIONS, and FINAL EQUALIZED VALUE. Includes entries for State of Minnesota, James A. Lustie, Fred + Marie Gilbertson, and Carl + Mildred M. Lamot.

Cass County, Minnesota, for Taxes for the Year 1963.

Table with columns: SOLD FOR TAXES, VALUATIONS BY SCHOOL DISTRICTS AS EQUALIZED BY DEPARTMENT OF TAXATION, Tax Including State Homestead, SPECIAL TAXES, TOTAL TAXES, PAID, WHEN PAID, Number of Receipt, March Settlement, June Settlement, November Settlement, Collections to First Monday in January, Delinquent on First Monday in January, Total Delinquent Tax and Penalty, and REMARKS. Includes handwritten tax amounts and payment dates.

Assessment Roll and Tax List of Real Property in the Town of Sylvan

* Indicate Type of Property: R-Residential, C-Commercial, I-Industrial, U-Utility, F-Farm, L-Lakeshore, T-Timber, M-Mineral

Form 500 MILLER-DAVIS CO., MINNEAPOLIS

Table with columns: IN WHOSE NAME ASSESSED, DESCRIPTION OF PROPERTY, TRUE AND FULL VALUATIONS, ASSESSED VALUATIONS, and FINAL EQUALIZED VALUE. Includes entries for State of Minnesota and Leslie E. & Rose M. Piety.

Cass County, Minnesota, for Taxes for the Year 1963.

Table with columns: VALUATIONS BY SCHOOL DISTRICTS AS EQUALIZED BY DEPARTMENT OF TAXATION, Tax including State Homestead, State Tax on Non-Homestead, SPECIAL TAXES, TOTAL TAXES, PAID, WHEN PAID, Number of Receipt, March Settlement, June Settlement, November Settlement, Collections to First Monday in January 1965, Delinquent on First Monday in January 1965, Total Delinquent Tax and Penalty, REMARKS. Includes handwritten tax amounts and dates.

Assessment Roll and Tax List of Real Property in the Town of Sylvan

* Indicate Type of Property: R-Residential, C-Commercial, I-Industrial, U-Utility, F-Farm, L-Lakeshore, T-Timber, M-Mineral

Form 5CD MILLER-DAVIS CO., MINNEAPOLIS

Table with columns: IN WHOSE NAME ASSESSED, SUBDIVISION, TRUE AND FULL VALUATIONS, ASSESSED VALUATIONS, and FINAL EQUALIZED VALUE. Includes entries for Donald R. Farmer, Thos. L. + Mae L. Horn, Edwin A. + Aleyce A. Brown, Raleigh + Clara E. Mc Guire, Lyle + Rosalie Dobell, and Percy L. Mc Clay.

(Continued)

22167

Cass County, Minnesota, for Taxes for the Year 1963.

Table with columns: SOLD FOR TAXES, VALUATIONS BY SCHOOL DISTRICTS AS EQUALIZED BY DEPARTMENT OF TAXATION, Tax Including State Homestead, State Tax on Non-Homestead, SPECIAL TAXES, TOTAL TAXES, PAID, WHEN PAID, Number of Receipt, March Settlement 1964, June Settlement 1964, November Settlement 1964, Collections to First Monday in January 1965, Delinquent on First Monday in January 1965, Total Delinquent Tax and Penalty, REMARKS. Includes handwritten notes and dates like '2nd HALF PAID OCT 31 1964'.

888

136 = 1024

25966
4316
30282

914

31196

16014

9474

978

4730

Assessment Roll and Tax List of Real Property in the Town of Sylvan

* Indicate Type of Property: R-Residential, C-Commercial, I-Industrial, U-Utility, F-Farm, L-Lakeshore, T-Timber, M-Mineral

Form 5CD MILLER-DAVIS CO., MINNEAPOLIS

Table with columns: IN WHOSE NAME ASSESSED, DESCRIPTION OF PROPERTY, TRUE AND FULL VALUATIONS, ASSESSED VALUATIONS, and FINAL EQUALIZED VALUE. Includes handwritten entries for property owners like Donald R. Farmer and Allen E. + Ethel E. Rogers.

Cass County, Minnesota, for Taxes for the Year 1963.

Table with columns: VALUATIONS BY SCHOOL DISTRICTS AS EQUALIZED BY DEPARTMENT OF TAXATION, Tax Including State Homestead, SPECIAL TAXES, TOTAL TAXES, PAID, WHEN PAID, Number of Receipt, March Settlement, June Settlement, November Settlement, Collections to First Monday in January 1963, Delinquent on First Monday in January 1965, Total Delinquent Tax and Penalty, and REMARKS. Includes handwritten tax payment details.

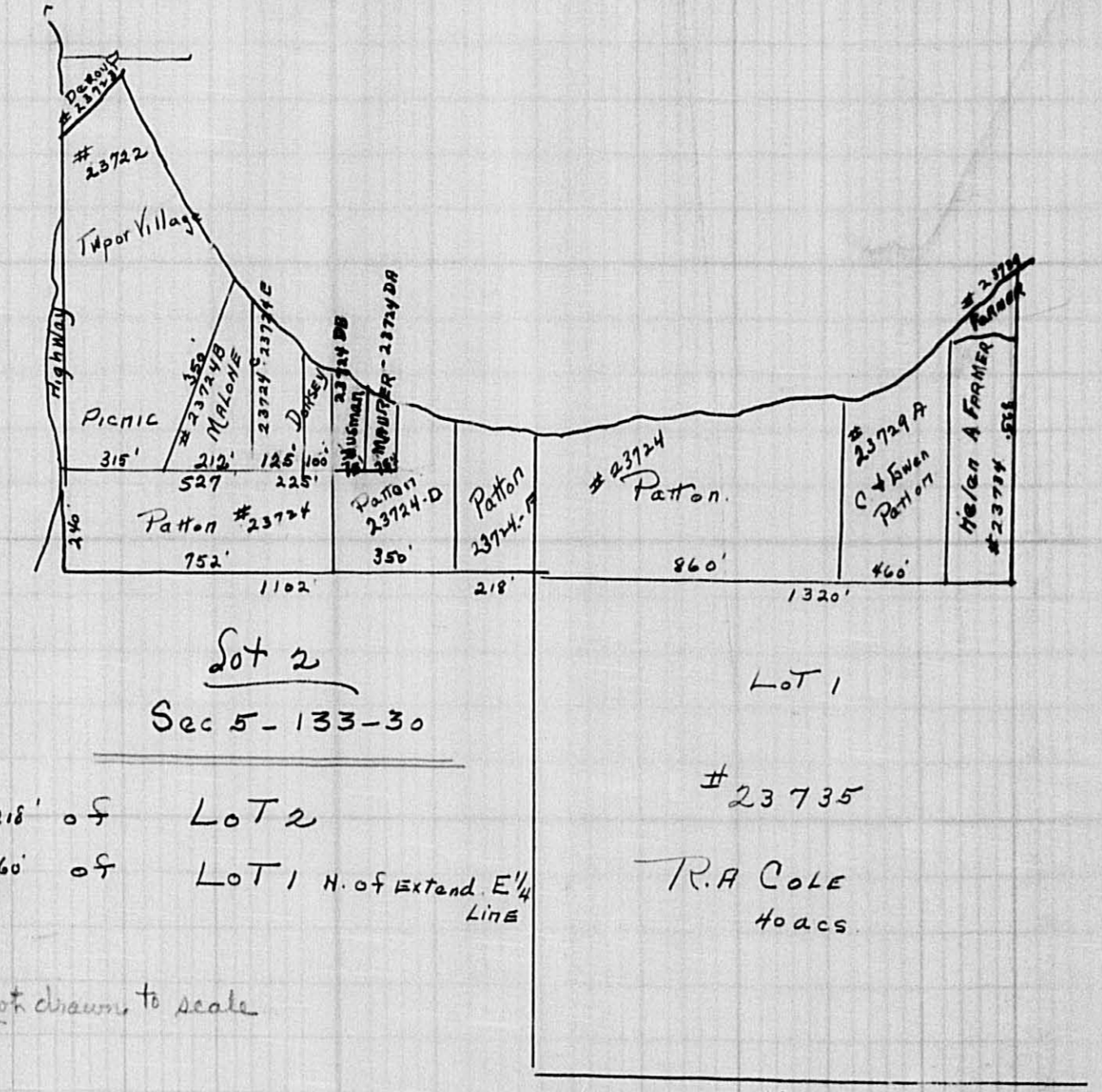
Assessment Roll and Tax List of Real Property in t

In Sylvan Twp checked 10/29/62

Indicate Type of Property: R-Residential, C-Commercial, I-Industrial, U-Utility, F-Farm, L-Lakefront, T-Theater, M-Miscellaneous

Table with columns: IN WHOSE NAME ASSESSED, SUBDIVISION, Sec. or Lot, Town or Block, Rng., Number of Acres of Land, No. School District, Ind. cate Home-stead, Agri. Rec., Ind. cate Prop-erty, and various tax/assessment columns.

Table with columns: TRUE AND FULL VALUATIONS, ASSESSED VALUATIONS, and various tax/assessment columns.



(Continued) 47 75

Cass County, Minnesota, for Taxes for the Year 1963.

Large table with columns: SOLD FOR TAXES, VALUATIONS BY SCHOOL DISTRICTS AS EQUALIZED BY DEPARTMENT OF TAXATION, Tax Including State Homestead, State Tax on Non-Homestead, SPECIAL TAXES, SPECIAL TAXES, TOTAL TAXES, PAID, WHEN PAID, Number of Receipt, March Settlement, June Settlement, Penalty, November Settlement, Penalty, Collections to First Monday in January 1965, Penalty, Delinquent on First Monday in January 1965, Total Delinquent Tax and Penalty, and REMARKS.

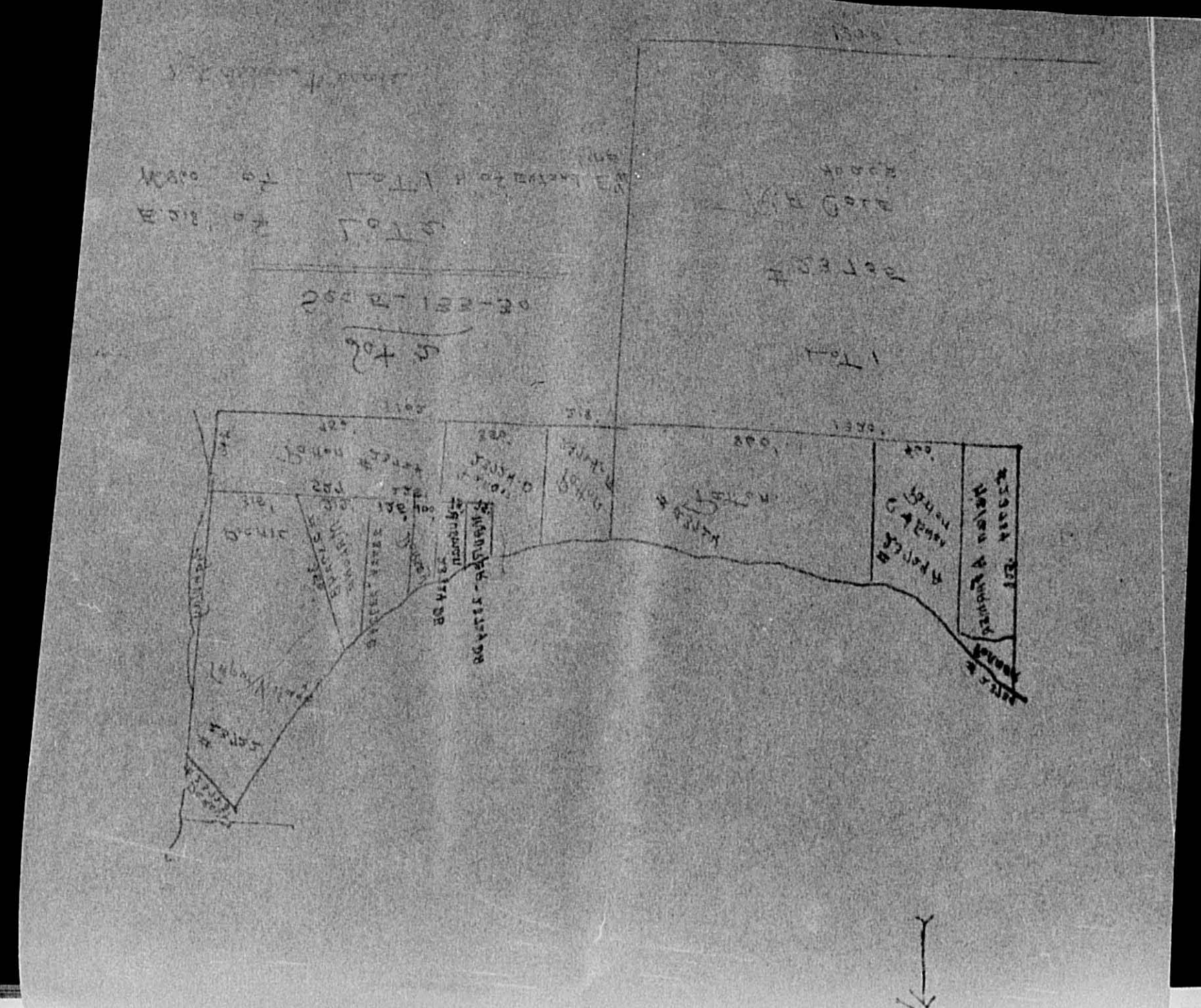
Assessment Roll and Tax List of Real Property in the Town of...

* Indicate Type of Property: R-Residential, C-Commercial, I-Industrial, U-Utility, F-Farm, L-Lakeshore, A-Airport, M-Mineral

Table with columns: IN WHOSE NAME ASSESSED, DESCRIPTION OF PROPERTY, TRUE AND FULL VALUATIONS, ASSESSED VALUATIONS, and FINAL EQUALIZED VALUE. Includes handwritten entries for property owners like M.W. + Evelyn I. Malone and descriptions like PART of GOVT LOT 2.

(Continued)

47.75



Cass County, Minnesota, for Taxes for the Year 1963.

Table with columns: SOLD FOR TAXES, VALUATIONS BY SCHOOL DISTRICTS AS EQUALIZED BY DEPARTMENT OF TAXATION, Tax including State Homestead, SPECIAL TAXES, TOTAL TAXES, PAID, WHEN PAID, Number of Receipt, March Settlement 1964, June Settlement 1964, Penalty, November Settlement 1964, Penalty, Collections to First Monday in January 1965, Delinquent on First Monday in January 1965, Total Delinquent Tax and Penalty, and REMARKS. Includes handwritten entries for property owners and tax amounts.

4 32 = 32 328 08
1090 = 1090 4447
1122 = 1122 37250

28684

9173

489

Assessment Roll and Tax List of Real Property in the Town of Sylvan

* Indicate Type of Property: R-Residential, C-Commercial, I-Industrial, U-Utility, F-Farm, L-Lakeshore, T-Timber, M-Mineral

Form 500 - MILLER-DAVIS CO., MINNEAPOLIS

Table with columns: IN WHOSE NAME ASSESSED, DESCRIPTION OF PROPERTY, TRUE AND FULL VALUATIONS, ASSESSED VALUATIONS, and FINAL EQUALIZED VALUE. Includes entries for Harriet B. Derauf, Richard E. Derauf, Paul O. Berglund, and Ralph A. + Cora Agnes Cole.

Cass County, Minnesota, for Taxes for the Year 1963.

Table with columns: SOLD FOR TAXES, VALUATIONS BY SCHOOL DISTRICTS AS EQUALIZED BY DEPARTMENT OF TAXATION, Tax Including State Homestead, State Tax on Non-Homestead, SPECIAL TAXES, TOTAL TAXES, PAID, WHEN PAID, Number of Receipt, March Settlement 1964, June Settlement 1964, November Settlement 1964, Collections to First Monday in January 1965, Delinquent on First Monday in January 1965, Total Delinquent Tax and Penalty, REMARKS. Includes entries for 1-20 and 6-20.

Assessment Roll and Tax List of Real Property in the Town of Sylvan

* Indicate Type of Property: R-Residential, C-Commercial, I-Industrial, U-Utility, F-Farm, L-Lakeshore, T-Timber, M-Mineral

Form SCD - MILLER-DAVIS CO., MINNEAPOLIS

Table with columns: IN WHOSE NAME ASSESSED, DESCRIPTION OF PROPERTY, TRUE AND FULL VALUATIONS, ASSESSED VALUATIONS, and FINAL EQUALIZED VALUE. Includes entries for Davis Develop. Co., George N. + Grace Wilson, Geo. + Ruth E. Hip, Geo. Hip, George W. + Ruth E. Hip, Geo. Hip, George W. + Ruth E. Hip, Zack Barnett, George N. Wilson, and Arno + Clara L. Ressler.

Handwritten entries in the 'IN WHOSE NAME ASSESSED' column, including names like George N. + Grace Wilson, Geo. + Ruth E. Hip, and Zack Barnett.

592.93

Cass County, Minnesota, for Taxes for the Year 1963.

Table with columns: SOLD FOR TAXES, VALUATIONS BY SCHOOL DISTRICTS AS EQUALIZED BY DEPARTMENT OF TAXATION, Tax Including State Homestead, SPECIAL TAXES, TOTAL TAXES, PAID, WHEN PAID, Number of Receipt, March Settlement, June Settlement, November Settlement, Collections to First Monday in January, Delinquent on First Monday in January, Total Delinquent Tax and Penalty, and REMARKS. Includes handwritten notes like 'PAID IN FULL' and 'PAID IN FULL'.

Handwritten entries in the 'SOLD FOR TAXES' and 'REMARKS' columns, including tax amounts, payment dates, and delinquency notes.

102.64 59.36 46.50

Vertical text on the right edge of the page, including 'TAXES OF SYLVAN' and 'CASS COUNTY, MINNESOTA'.

Assessment Roll and Tax List of Real Property in the Town of Sylvan

* Indicate Type of Property: R-Residential, C-Commercial, I-Industrial, U-Utility, F-Farm, L-Lakeshore, T-Timber, M-Mineral

Form 500 MILLER-DAVIS CO., MINNEAPOLIS

Table with columns: IN WHOSE NAME ASSESSED, DESCRIPTION OF PROPERTY, TRUE AND FULL VALUATIONS, ASSESSED VALUATIONS, and FINAL EQUALIZED VALUE. Includes entries for Arno + Clara L. Ressler, O.A. + Erna Berndt, Willis + Flossy Mann, Robert + Grace Oliphant, Adolph G. + Joyce M. Berndt, Wesley + Emma Peck, and Milford W. Wright.

133-30

Cass County, Minnesota, for Taxes for the Year 1963.

Table with columns: SOLD FOR TAXES, VALUATIONS BY SCHOOL DISTRICTS AS EQUALIZED BY DEPARTMENT OF TAXATION, Tax Including State Homestead, State Tax on Non-Homestead, SPECIAL TAXES, TOTAL TAXES, PAID, WHEN PAID, Number of Receipt, March Settlement 1964, June Settlement 1964, November Settlement 1964, Collections to First Monday in January 1965, Delinquent on First Monday in January 1965, Total Delinquent Tax and Penalty, and REMARKS. Includes entries for districts 70, 120, 60, 94, 18, 34, 52, 56, 30, 32, 28, 148, 44, 27, 246, 95, 71, 999, 286, 7285.

Village of Sylvan, Land & Albert's 1st Add'n, Adolph's 2nd, North Sylvan Lake, Adolph's Sylvan Pt.

Assessment Roll and Tax List of Real Property in the Town of Sylvan

* Indicate Type of Property: R-Residential, C-Commercial, I-Industrial, U-Utility, F-Farm, L-Lakeshore, T-Timber, M-Mineral

Table with columns: IN WHOSE NAME ASSESSED, DESCRIPTION OF PROPERTY, TRUE AND FULL VALUATIONS, ASSESSED VALUATIONS, and FINAL EQUALIZED VALUE. Includes entries for Ralph A. + Cora Agnes Cole, Arthur Berndt, Wm G. Gerrels, Gilbert + Myrtle Jessner, O.A. + Erma Berndt, and Wm. G. Gerrels.

Cass County, Minnesota, for Taxes for the Year 1963.

Table with columns: VALUATIONS BY SCHOOL DISTRICTS AS EQUALIZED BY DEPARTMENT OF TAXATION, Tax Including State Homestead, State Tax on Non-Homestead, SPECIAL TAXES, TOTAL TAXES, PAID, WHEN PAID, Number of Receipt, March Settlement, June Settlement, November Settlement, Collections to First Monday in January 1965, Delinquent on First Monday in January 1965, Total Delinquent Tax and Penalty, and REMARKS. Includes handwritten notes and dates like 'PAID IN FULL' and 'Balance Paid'.

Assessment Roll and Tax List of Real Property in the Town of Sylvan

* Indicate Type of Property: R-Residential, C-Commercial, I-Industrial, U-Utility, F-Farm, L-Lakeshore, T-Timber, M-Mineral

Table with columns: IN WHOSE NAME ASSESSED, DESCRIPTION OF PROPERTY, TRUE AND FULL VALUATIONS, ASSESSED VALUATIONS, FINAL EQUALIZED VALUE. Includes entries for Northwest Paper Co., Elmer + Mae Gudim, Ralph A. + Cora Agnes Cole, and Edwin G. Hubin.

Cass County, Minnesota, for Taxes for the Year 1963.

Table with columns: VALUATIONS BY SCHOOL DISTRICTS AS EQUALIZED BY DEPARTMENT OF TAXATION, Tax Including State Homestead, State Tax on Non-Homestead, SPECIAL TAXES, TOTAL TAXES, PAID, WHEN PAID, Number of Receipt, March Settlement 1964, June Settlement 1964, Penalty, November Settlement 1964, Collections to First Monday in January 1965, Delinquent on First Monday in January 1965, Total Delinquent Tax and Penalty, REMARKS. Includes handwritten entries for payments and delinquencies.

Assessment Roll and Tax List of Real Property in the Town of Sylvan

* Indicate Type of Property: R-Residential, C-Commercial, I-Industrial, U-Utility, F-Farm, L-Lakeshore, T-Timber, M-Mineral

Form 500 MILLER-DAVIS CO., MINNEAPOLIS

Table with columns: IN WHOSE NAME ASSESSED, DESCRIPTION OF PROPERTY, TRUE AND FULL VALUATIONS, ASSESSED VALUATIONS, and FINAL EQUALIZED VALUE. Includes entries for State of Minnesota and individuals like Leslie + Rose Pietz and Ernest J. + Orphia Stark.

400 00

133-30

Cass County, Minnesota, for Taxes for the Year 1963.

Table with columns: SOLD FOR TAXES, VALUATIONS BY SCHOOL DISTRICTS AS EQUALIZED BY DEPARTMENT OF TAXATION, Tax including State Homestead, State Tax on Non-Homestead, SPECIAL TAXES, TOTAL TAXES, PAID, WHEN PAID, Number of Receipt, March Settlement 1964, June Settlement 1964, November Settlement 1964, Collections to First Monday in January 1965, Delinquent on First Monday in January 1965, Total Delinquent Tax and Penalty, REMARKS. Includes handwritten notes and calculations.

488

202

690

488

242

730

20178

1270

21448

216

21664

7136

14458

70

Village of Sylvan

LAND & ALLEYS 1st ADDY

ALWAYS 2nd

NEAR SYLVAN LAKE

CAMPBELL'S SYLVAN LAKE

Assessment Roll and Tax List of Real Property in the Town of Sylvan

* Indicate Type of Property: R-Residential, C-Commercial, I-Industrial, U-Utility, F-Farm, L-Lakeshore, T-Timber, M-Mineral

Form 500 MILLER-DAVIS CO., MINNEAPOLIS

Table with columns: IN WHOSE NAME ASSESSED, DESCRIPTION OF PROPERTY, TRUE AND FULL VALUATIONS, ASSESSED VALUATIONS, and FINAL EQUALIZED VALUE. Includes handwritten entries for Lizzie A. Newkirk, Herbert W. + Lois Regelin, and Richard Anderson.

Cass County, Minnesota, for Taxes for the Year 1963.

Table with columns: SOLD FOR TAXES, VALUATIONS BY SCHOOL DISTRICTS AS EQUALIZED BY DEPARTMENT OF TAXATION, Tax Including State Homestead, SPECIAL TAXES, TOTAL TAXES, PAID, WHEN PAID, Number of Receipt, March Settlement, June Settlement, Penalty, Collections to First Monday in January 1965, Delinquent on First Monday in January 1965, Total Delinquent Tax and Penalty, and REMARKS.

Assessment Roll and Tax List of Real Property in the Town of Sylvan

* Indicate Type of Property: R-Residential, C-Commercial, I-Industrial, U-Utility, F-Farm, L-Lakeshore, T-Timber, M-Mineral

Form SCD MILLER-DAVIS CO., MINNEAPOLIS

Table with columns: IN WHOSE NAME ASSESSED, DESCRIPTION OF PROPERTY, TRUE AND FULL VALUATIONS, ASSESSED VALUATIONS, and FINAL EQUALIZED VALUE. Includes entries for Theodore J. & Betty L. Holden, Herbert W. & Lois Regelin, and Lawrence W. & Shirley M. Carlson.

Cass County, Minnesota, for Taxes for the Year 1963.

Table with columns: VALUATIONS BY SCHOOL DISTRICTS AS EQUALIZED BY DEPARTMENT OF TAXATION, Tax Including State Homestead, SPECIAL TAXES, TOTAL TAXES, PAID, WHEN PAID, Number of Receipt, March Settlement 1964, June Settlement 1964, November Settlement 1964, Collections to First Monday in January 1965, Delinquent on First Monday in January 1965, Total Delinquent Tax and Penalty, and REMARKS. Includes entries for various property owners and their tax payment status.

Assessment Roll and Tax List of Real Property in the Town of Sylvan

* Indicate Type of Property: R-Residential, C-Commercial, I-Industrial, U-Utility, F-Farm, L-Lakeshore, T-Timber, M-Mineral

Table with columns: IN WHOSE NAME ASSESSED, DESCRIPTION OF PROPERTY, TRUE AND FULL VALUATIONS, ASSESSED VALUATIONS, and FINAL EQUALIZED VALUE. Includes entries for Mike + Frances C. Ondris, Albert E. + Vernie M. Root, George M. + Bernice V. Wilder, and Mrs. Annie C. Silver.

(Continued)

417 84

Cass County, Minnesota, for Taxes for the Year 1963.

Table with columns: VALUATIONS BY SCHOOL DISTRICTS AS EQUALIZED BY DEPARTMENT OF TAXATION, Tax Including State Homestead, SPECIAL TAXES, TOTAL TAXES, PAID, WHEN PAID, Number of Receipt, March Settlement, June Settlement, November Settlement, Delinquent on First Monday in January 1965, Total Delinquent Tax and Penalty, and REMARKS. Includes entries for various districts and tax amounts.

876
316
1192

34854

280

35134

8078

5856

21200

Assessment Roll and Tax List of Real Property in the Town of Sylvan

* Indicate Type of Property: R-Residential, C-Commercial, I-Industrial, U-Utility, F-Farm, L-Lakeshore, T-Timber, M-Mineral

Form SCD MILLER-DAVIS CO., MINNEAPOLIS

Table with columns: IN WHOSE NAME ASSESSED, DESCRIPTION OF PROPERTY, TRUE AND FULL VALUATIONS, ASSESSED VALUATIONS, and FINAL EQUALIZED VALUE. Includes handwritten entries for Mrs. Annie C. Silver and Albert E. + Vernie M. Root.

Mrs. Annie C. Silver
Albert E. + Vernie M. Root
Mrs. Annie C. Silver
Albert E. + Vernie M. Root
Mrs. Annie C. Silver

Cass County, Minnesota, for Taxes for the Year 1963.

Table with columns: VALUATIONS BY SCHOOL DISTRICTS AS EQUALIZED BY DEPARTMENT OF TAXATION, Tax including State Homestead, SPECIAL TAXES, TOTAL TAXES, PAID, WHEN PAID, Number of Receipt, March Settlement, June Settlement, November Settlement, Collections to First Monday in January, Delinquent on First Monday in January, Total Delinquent Tax and Penalty, and REMARKS. Includes handwritten tax payment details.

PAID IN FULL MAY 29 1964
2nd HALF PAID OCT 31 1964
1st HALF PAID MAY 19 1964

10877
10866
10877
10866
10877

Assessment Roll and Tax List of Real Property in the Town of Sylvan

* Indicate Type of Property: R-Residential, C-Commercial, I-Industrial, U-Utility, F-Farm, L-Lakeshore, T-Timber, M-Mineral

Table with columns: IN WHOSE NAME ASSESSED, DESCRIPTION OF PROPERTY, TRUE AND FULL VALUATIONS, ASSESSED VALUATIONS, and FINAL EQUALIZED VALUE. Includes handwritten entries for John J. Parks, Alice Anderson, and Clarence H. Sliter.

Cass County, Minnesota, for Taxes for the Year 1963.

Table with columns: VALUATIONS BY SCHOOL DISTRICTS AS EQUALIZED BY DEPARTMENT OF TAXATION, Tax including State Homestead, State Tax on Non-Homestead, SPECIAL TAXES, TOTAL TAXES, PAID, WHEN PAID, Number of Receipt, March Settlement, June Settlement, November Settlement, Collections to First Monday in January 1965, Delinquent on First Monday in January 1965, Total Delinquent Tax and Penalty, and REMARKS. Includes handwritten entries for property numbers 1 through 20.

Assessment Roll and Tax List of Real Property in the Town of Sylvan
* Indicate Type of Property: R-Residential, C-Commercial, I-Industrial, U-Utility, F-Farm, L-Lakeshore, T-Timber, M-Mineral

Form SCD MILLER-DAVIS CO., MINNEAPOLIS

Table with columns: IN WHOSE NAME ASSESSED, DESCRIPTION OF PROPERTY, TRUE AND FULL VALUATIONS (RURAL, ALL OTHER, MACHINERY, Seasonal and Recreational Cabins, TOTAL ASSESSED VALUE), FINAL EQUALIZED VALUE. Includes handwritten entries for Arthur S. Fowler, Minnesota Power + Light Co., Melvin + Milda Hime, Luentin Schultzy, Jerry R. + Lorraine E. Hayes, and Melvin + Milda Hime.

Cass County, Minnesota, for Taxes for the Year 1963.

Table with columns: SOLD FOR TAXES, VALUATIONS BY SCHOOL DISTRICTS AS EQUALIZED BY DEPARTMENT OF TAXATION, Tax Including State Homestead, State Tax on Non-Homestead, SPECIAL TAXES, TOTAL TAXES, PAID, WHEN PAID, Number of Receipt, March Settlement 1964, June Settlement 1964, November Settlement 1964, Collections to First Monday in January 1965, Delinquent on First Monday in January 1965, Total Delinquent Tax and Penalty, REMARKS. Includes handwritten entries for tax payments and dates like 'PAID IN FULL MAY 29 1964'.

Assessment Roll and Tax List of Real Property in the Town of Sylvan

* Indicate Type of Property: R-Residential, C-Commercial, I-Industrial, U-Utility, F-Farm, L-Lakeshore, T-Timber, M-Mineral

Form SCD - MILLER-DAVIS CO., MINNEAPOLIS

Table with columns: IN WHOSE NAME ASSESSED, DESCRIPTION OF PROPERTY, TRUE AND FULL VALUATIONS, ASSESSED VALUATIONS, and FINAL EQUALIZED VALUE. Includes entries for John W. Lee, Marie A. Thompson, and John Wellington Lee.

Cass County, Minnesota, for Taxes for the Year 1963.

Table with columns: SOLD FOR TAXES, VALUATIONS BY SCHOOL DISTRICTS AS EQUALIZED BY DEPARTMENT OF TAXATION, Tax including State Homestead, State Tax on Non-Homestead, SPECIAL TAXES, TOTAL TAXES, PAID, WHEN PAID, Number of Receipt, March Settlement 1964, June Settlement 1964, Penalty, November Settlement 1964, Collections to First Monday in January 1965, Delinquent on First Monday in January 1965, Total Delinquent Tax and Penalty, REMARKS. Includes entries for various districts and tax amounts.

Assessment Roll and Tax List of Real Property in the Town of Sylvan

* Indicate Type of Property: R-Residential, C-Commercial, I-Industrial, U-Utility, F-Farm, L-Lakeshore, T-Timber, M-Mineral

Form 500 - MILLER-SAYRE CO., MINNEAPOLIS

Table with columns: IN WHOSE NAME ASSESSED, DESCRIPTION OF PROPERTY, TRUE AND FULL VALUATIONS, ASSESSED VALUATIONS, and FINAL EQUALIZED VALUE. Includes entries for George F. & Margaret M. Gerrels, Edward J. & Agnes I. Dorsey, Norman W. & Barbara Amelung, etc.

State of Minnesota

477 71

Cass County, Minnesota, for Taxes for the Year 1963.

Table with columns: SOLD FOR TAXES, VALUATIONS BY SCHOOL DISTRICTS AS EQUALIZED BY DEPARTMENT OF TAXATION, Tax Including State Homestead, State Tax on Non-Homestead, SPECIAL TAXES, TOTAL TAXES, PAID, WHEN PAID, Number of Receipt, March Settlement 1964, June Settlement 1964, Penalty, November Settlement 1964, Collections to First Monday in January 1965, Delinquent on First Monday in January 1965, Total Delinquent Tax and Penalty, REMARKS. Includes entries for George F. & Margaret M. Gerrels, Edward J. & Agnes I. Dorsey, Norman W. & Barbara Amelung, etc.

Village of Sylvan, LAND & ATTORNEY'S 1st ADDN TO SYLVAN, ATTORNEY'S 2nd ADDN TO SYLVAN, CARLTON'S SYLVAN PARK

Assessment Roll and Tax List of Real Property in the Town of Sylvan

* Indicate Type of Property: R-Residential, C-Commercial, I-Industrial, U-Utility, F-Farm, L-Lakeshore, T-Timber, M-Mineral

Form 500 MILLER-DAVIS CO., MINNEAPOLIS

Table with columns: IN WHOSE NAME ASSESSED, DESCRIPTION OF PROPERTY, TRUE AND FULL VALUATIONS, ASSESSED VALUATIONS, and FINAL EQUALIZED VALUE. Includes entries for Howard + Ednor Phillips, Rose Marie Orr + Glen Antone Stephenson, and Stewart + Marilyn Traver.

661.06

Cass County, Minnesota, for Taxes for the Year 1963.

Table with columns: VALUATIONS BY SCHOOL DISTRICTS AS EQUALIZED BY DEPARTMENT OF TAXATION, Tax including State Homestead, State Tax on Non-Homestead, SPECIAL TAXES, TOTAL TAXES, PAID, WHEN PAID, Number of Receipt, March Settlement, June Settlement, November Settlement, Collections to First Monday in January 1965, Delinquent on First Monday in January 1965, Total Delinquent Tax and Penalty, and REMARKS. Includes entries for districts 1 through 20.

16905

17863

16666

10904

31932

15792 13070 3070

Village of Sylvan

LAND & INTERESTS 1st ADDY

ALBERT'S 2nd

ROPER SYLVAN LAKE

CLAYTON'S SYLVAN LAKE

Assessment Roll and Tax List of Real Property in the Town of Lyman

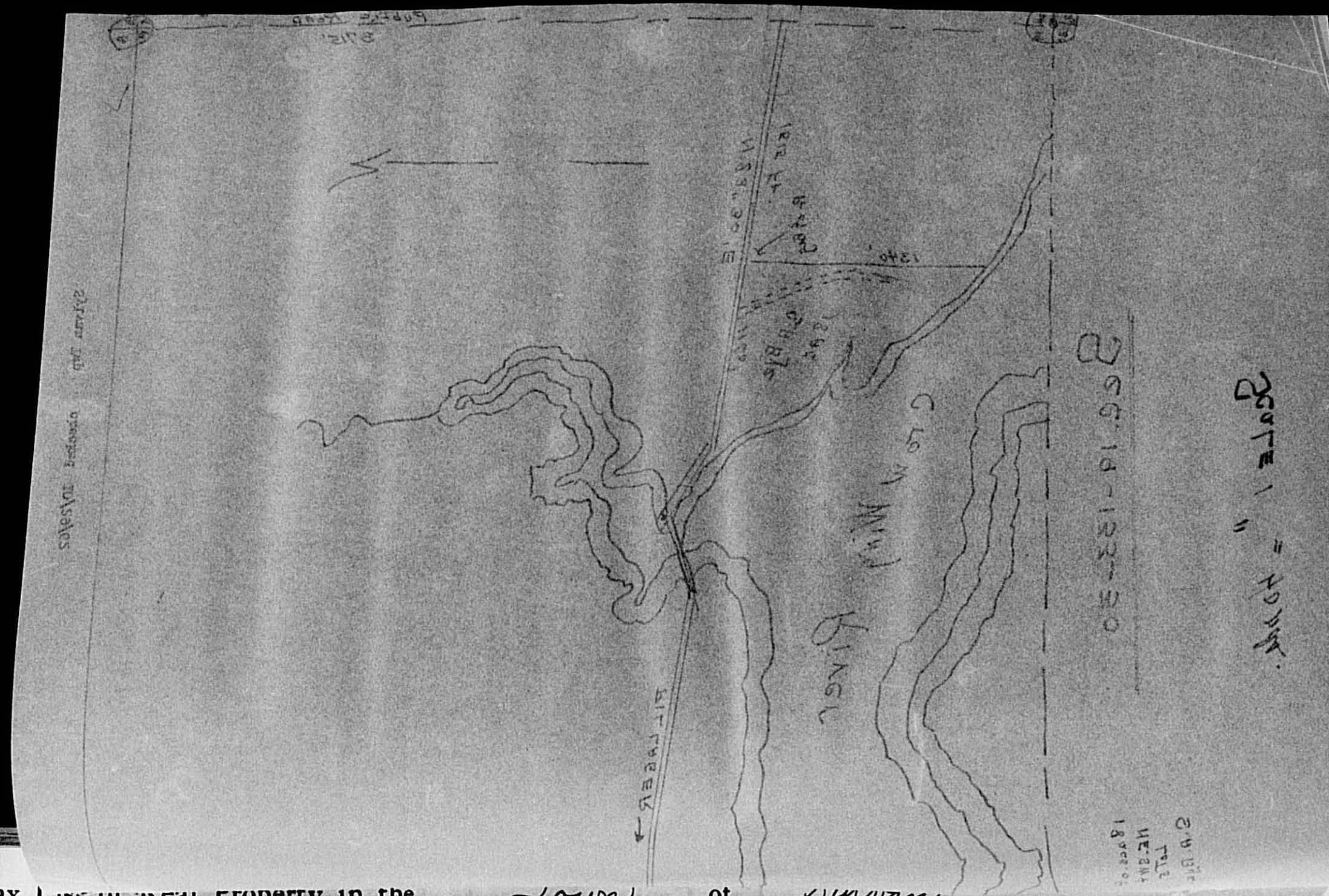


Table with columns for 'DESCRIPTION OF PROPERTY', 'TRUE AND FULL VALUATIONS', and 'ASSESSED VALUATIONS'. It lists property details for various owners including St. Olaf College and Minnesota Power + Light Co.

Cass County, Minnesota, for Taxes for the Year 1963.

Table with columns for 'VALUATIONS BY SCHOOL DISTRICTS AS EQUALIZED BY DEPARTMENT OF TAXATION', 'SPECIAL TAXES', 'TOTAL TAXES', and 'PAID'. It provides a detailed breakdown of taxes for 20 different property units.

Assessment Roll and Tax List of Real Property in the Town of Sylvan
* Indicate Type of Property: R-Residential, C-Commercial, I-Industrial, U-Utility, F-Farm, L-Lakeshore, T-Timber, M-Mineral

Form 502 MILLER-DAVIS CO., MINNEAPOLIS

Table with columns: IN WHOSE NAME ASSESSED, DESCRIPTION OF PROPERTY, TRUE AND FULL VALUATIONS, ASSESSED VALUATIONS, FINAL EQUALIZED VALUE. Includes entries for Lena Cole, Wesley E. Peterson, and Minnesota Power + Light Co.

(Continued)

127 02

Cass County, Minnesota, for Taxes for the Year 1963.

Table with columns: SOLD FOR TAXES, VALUATIONS BY SCHOOL DISTRICTS AS EQUALIZED BY DEPARTMENT OF TAXATION, Tax including State Homestead, State Tax on Non-Homestead, SPECIAL TAXES, TOTAL TAXES, PAID, WHEN PAID, Number of Receipt, March Settlement, June Settlement, November Settlement, Collections to First Monday in January, Delinquent on First Monday in January, Total Delinquent Tax and Penalty, REMARKS. Includes handwritten entries for C. J. J. and tax payment dates.

Village of Sylvan

LAND & MINERAL INT. AND M. TO MINN. STATE

ALPHABETICALLY BY OWNER'S NAME

BY TOWN & RANGE & SECTION

CASS COUNTY'S SYLVAN PA...

Assessment Roll and Tax List of Real Property in the Town of Sylvan

Indicate Type of Property: R-Residential, C-Commercial, I-Industrial, U-Utility, F-Farm, L-Lakeshore, T-Timber, M-Mineral

Form 500 - WILSON-DAVIS CO., MINNEAPOLIS

133-30

Table with columns: IN WHOSE NAME ASSESSED, DESCRIPTION OF PROPERTY, TRUE AND FULL VALUATIONS, ASSESSED VALUATIONS, and FINAL EQUALIZED VALUE. Includes entries for Minnesota Power & Light Co. and Wesley E. Peterson.

8150

Cass County, Minnesota, for Taxes for the Year 1963.

Table with columns: SOLD FOR TAXES, VALUATIONS BY SCHOOL DISTRICTS AS EQUALIZED BY DEPARTMENT OF TAXATION, Tax including State Homestead, SPECIAL TAXES, TOTAL TAXES, PAID, WHEN PAID, and REMARKS. Includes handwritten tax amounts and dates.

Valle... of Sylvan

WARD & CURTIS

ALLEN'S

WATSON'S

Assessment Roll and Tax List of Real Property in the Town of Sylvan

* Indicate Type of Property: R-Residential, C-Commercial, I-Industrial, U-Utility, F-Farm, L-Lakeshore, T-Timber, M-Mineral

Form SCD MILLER-DAVIS CO., MINNEAPOLIS

Table with columns: IN WHOSE NAME ASSESSED, DESCRIPTION OF PROPERTY, TRUE AND FULL VALUATIONS, ASSESSED VALUATIONS, and FINAL EQUALIZED VALUE. Includes entries for Frederick W. Provalt, Jr. et al, Theodore Prescott, Earl A. + Lorine E. Paulson, and John L. + Georgia M. Morgan.

Cass County, Minnesota, for Taxes for the Year 1963.

Table with columns: VALUATIONS BY SCHOOL DISTRICTS AS EQUALIZED BY DEPARTMENT OF TAXATION, Tax Including State Homestead, SPECIAL TAXES, TOTAL TAXES, PAID, WHEN PAID, Number of Receipt, March Settlement, June Settlement, November Settlement, Collections to First Monday in January 1965, Delinquent on First Monday in January 1965, Total Delinquent Tax and Penalty, and REMARKS. Includes handwritten notes and dates like 'PAID IN FULL MAY 29 1964'.

Assessment Roll and Tax List of Real Property in the Town of Sylvan

* Indicate Type of Property: R-Residential, C-Commercial, I-Industrial, U-Utility, F-Farm, L-Lakeshore, T-Timber, M-Mineral

Form 500 MILLER-DAVIS CO., MINNEAPOLIS

Table with columns: IN WHOSE NAME ASSESSED, DESCRIPTION OF PROPERTY, TRUE AND FULL VALUATIONS, ASSESSED VALUATIONS, and FINAL EQUALIZED VALUE. Includes entries for Elmer + Ella M. Wedan and Minnesota Power + Light Co.

Cass County, Minnesota, for Taxes for the Year 1963.

Table with columns: SOLD FOR TAXES, VALUATIONS BY SCHOOL DISTRICTS AS EQUALIZED BY DEPARTMENT OF TAXATION, Tax Including State Homestead, SPECIAL TAXES, TOTAL TAXES, PAID, WHEN PAID, Number of Receipt, March Settlement, June Settlement, November Settlement, Collections to First Monday in January, Delinquent on First Monday in January, Total Delinquent Tax and Penalty, and REMARKS. Includes handwritten notes and calculations.

Assessment Roll and Tax List of Real Property in the Town of Sylvan

* Indicate Type of Property: R-Residential, C-Commercial, I-Industrial, U-Utility, F-Farm, L-Lakeshore, T-Timber, M-Mineral

Form 5C - MILLER-DAVIS CO., MINNEAPOLIS

Table with columns: IN WHOSE NAME ASSESSED, DESCRIPTION OF PROPERTY, TRUE AND FULL VALUATIONS, ASSESSED VALUATIONS, and FINAL EQUALIZED VALUE. Includes entries for Martin + Lena Loftis and Charles M. + Della D. Luttrell.

(Continued)

Cass County, Minnesota, for Taxes for the Year 1963.

Table with columns: VALUATIONS BY SCHOOL DISTRICTS AS EQUALIZED BY DEPARTMENT OF TAXATION, Tax including State Homestead, State Tax on Non-Homestead, SPECIAL TAXES, TOTAL TAXES, PAID, WHEN PAID, Number of Receipt, March Settlement 1964, June Settlement 1964, November Settlement 1964, Collections to First Monday in January 1965, Delinquent on First Monday in January 1965, Total Delinquent Tax and Penalty, REMARKS. Includes handwritten notes and dates like 'PAID IN FULL May 22 1964'.

Assessment Roll and Tax List of Real Property in the Town of Sylvan

* Indicate Type of Property: R-Residential, C-Commercial, I-Industrial, U-Utility, F-Farm, L-Lakeshore, T-Timber, M-Mineral

Form 50 MILLER-DAVIS CO., MINNEAPOLIS

Table with columns: IN WHOSE NAME ASSESSED, DESCRIPTION OF PROPERTY, TRUE AND FULL VALUATIONS, ASSESSED VALUATIONS, and FINAL EQUALIZED VALUE. Includes entries for GOVT LOTS 2-3-4-5-6, SE 1/4 of Sec. 1-133-30, and various owners like Frieda A. Carlyon and George E. + Barbara B. McPheeters.

Cass County, Minnesota, for Taxes for the Year 1963.

Table with columns: VALUATIONS BY SCHOOL DISTRICTS AS EQUALIZED BY DEPARTMENT OF TAXATION, Tax Including State Homestead, State Tax on Non-Homestead, SPECIAL TAXES, TOTAL TAXES, PAID, WHEN PAID, Number of Receipt, March Settlement, June Settlement, November Settlement, Collections to First Monday in January 1965, Delinquent on First Monday in January 1965, Total Delinquent Tax and Penalty, and REMARKS. Includes entries for various districts and payment dates.

Village of Sylvan, NORTH SYLVAN LAKE, CARLYON'S SYLVAN PARK

SYLVAN BRANCH, LAND & ALIEN'S 1st ADD'N, LAND & ALIEN'S 2nd ADD'N, LAND & ALIEN'S 3rd ADD'N, NO SYLVAN BRANCH

Assessment Roll and Tax List of Real Property in the Town of Sylvan

* Indicate Type of Property: R-Residential, C-Commercial, I-Industrial, U-Utility, F-Farm, L-Lakeshore, T-Timber, M-Mineral

Form 50 MILLER-DAVIS CO., MINNEAPOLIS

Table with columns: IN WHOSE NAME ASSESSED, DESCRIPTION OF PROPERTY, TRUE AND FULL VALUATIONS, ASSESSED VALUATIONS, and FINAL EQUALIZED VALUE. Includes entries for Irene W. Lovison, Robert J. + Harriet M. Thompson, John E. Kalymark, Frieda A. Carlyon, etc.

Cass County, Minnesota, for Taxes for the Year 1963.

Table with columns: VALUATIONS BY SCHOOL DISTRICTS AS EQUALIZED BY DEPARTMENT OF TAXATION, Tax including State Homestead, State Tax on Non-Homestead, SPECIAL TAXES, TOTAL TAXES, PAID, WHEN PAID, Number of Receipt, March Settlement, June Settlement, Penalty, November Settlement, Collections to First Monday in January, Delinquent on First Monday in January, Total Delinquent Tax and Penalty, REMARKS. Includes entries for 1 through 20, with tax amounts and payment dates.

Village of Sylvan, NORTH SYLVAN LAKE, CARLYON'S SYLVAN PARK

LAND & ALLEN'S 1ST ADD'N, LAND & ALLEN'S 2ND ADD'N, LAND & ALLEN'S 3RD ADD'N

Assessment Roll and Tax List of Real Property in the Town of Sylvan

* Indicate Type of Property: R-Residential, C-Commercial, I-Industrial, U-Utility, F-Farm, L-Lakeshore, T-Timber, M-Mineral

Form 5C MILLER-DAVIS CO., MINNEAPOLIS

Table with columns: IN WHOSE NAME ASSESSED, DESCRIPTION OF PROPERTY, TRUE AND FULL VALUATIONS, ASSESSED VALUATIONS, FINAL EQUALIZED VALUE. Includes entries for Carlyon's Sylvan Pk. Subdivision and Township of Sylvan.

Cass County, Minnesota, for Taxes for the Year 1963.

Table with columns: SOLD FOR TAXES, VALUATIONS BY SCHOOL DISTRICTS AS EQUALIZED BY DEPARTMENT OF TAXATION, Tax Including State Homestead, SPECIAL TAXES, TOTAL TAXES, PAID, WHEN PAID, Number of Receipt, March Settlement, June Settlement, November Settlement, Collections to First Monday in January 1965, Delinquent on First Monday in January 1965, Total Delinquent Tax and Penalty, REMARKS.

Village of Sylvan, CARLYON'S SYLVAN PARK, NORTH SYLVAN LAKE, LAND & ALLEN'S 1st ADDY, LAND & ALLEN'S 2nd ADDY, LAND & ALLEN'S 3rd ADDY

Village of Sylvan, LAND & ALLEN'S 1st ADDY, LAND & ALLEN'S 2nd ADDY, LAND & ALLEN'S 3rd ADDY

Assessment Roll and Tax List of Real Property in the Town of Sylvan

* Indicate Type of Property: R-Residential, C-Commercial, Industrial, U-Utility, F-Farm, L-Lakeshore, T-Timber, M-Mineral

Form 5C - HILLES-DAVIS CO., MINNEAPOLIS

Table with columns: IN WHOSE NAME ASSESSED, DESCRIPTION OF PROPERTY, TRUE AND FULL VALUATIONS, ASSESSED VALUATIONS, FINAL EQUALIZED VALUE. Includes entries for Chas. R. + Mabel M. Woodhouse, Helen A. Fiesler, Elmer P. Carrier, Dan + Mary Michaud, Geo. M. + Bernice V. Wilder, Charles M. + Della D. Luttrell, Roy Bertuleit.

Cass County, Minnesota, for Taxes for the Year 1963.

Table with columns: VALUATIONS BY SCHOOL DISTRICTS AS EQUALIZED BY DEPARTMENT OF TAXATION, TAX INCLUDING STATE HOMESTEAD, SPECIAL TAXES, TOTAL TAXES, PAID, WHEN PAID, Number of Receipt, March Settlement, June Settlement, November Settlement, Collections to First Monday in January, Delinquent on First Monday in January, Total Delinquent Tax and Penalty, REMARKS. Includes entries for balance paid, part paid, and full paid with specific dates and amounts.

Vertical text on the left margin: Village of Sylvan, 13-30, NORTH SYLVAN LAKE, CARLYON'S SYLVAN PARK

Vertical text on the right margin: SYLVAN BEACH, LAND & ALLEN'S 1st ADD'N, LAND & ALLEN'S 2nd ADD'N, SYLVAN BEACH

Assessment Roll and Tax List of Real Property in the Town of Sylvan

* Indicate Type of Property: R-Residential, C-Commercial, I-Industrial, U-Utility, F-Farm, L-Lakeshore, T-Timber, M-Mineral

Form 50 MILLER-DAVIS CO., MINNEAPOLIS

Table with columns: IN WHOSE NAME ASSESSED, DESCRIPTION OF PROPERTY, TRUE AND FULL VALUATIONS, ASSESSED VALUATIONS, and FINAL EQUALIZED VALUE. Includes entries for Roy Bertuleit, Roger R. + Joan Marie Peterson, and Roy H. + Josephine Mitchell.

Cass County, Minnesota, for Taxes for the Year 1963.

Table with columns: VALUATIONS BY SCHOOL DISTRICTS AS EQUALIZED BY DEPARTMENT OF TAXATION, Tax Including State Homestead, SPECIAL TAXES, TOTAL TAXES, PAID, WHEN PAID, Number of Receipt, March Settlement, June Settlement, November Settlement, Collections to First Monday in January 1965, Delinquent on First Monday in January 1965, Total Delinquent Tax and Penalty, REMARKS. Includes handwritten notes and calculations.

Village of Sylvan, Careyon's Sylvan Park, North Sylvan Lake, Sylvan Beach, Land & Albert's 1st Add'n, No Sylvan Beach, Land & Albert's 3rd Add'n, No Sylvan Beach, Land & Albert's 3rd Add'n, No Sylvan Beach

Assessment Roll and Tax List of Real Property in the Town of Sylvan

Indicate Type of Property: R-Residential, C-Commercial, I-Industrial, U-Utility, F-Farm, L-Lakeshore, T-Timber, M-Mineral

Form 50 - MILLER-DAVIS CO., MINNEAPOLIS

Table with columns: IN WHOSE NAME ASSESSED, DESCRIPTION OF PROPERTY, TRUE AND FULL VALUATIONS, ASSESSED VALUATIONS, and FINAL EQUALIZED VALUE. Includes entries for Geo. M. & Bernice Wilder, Carl L. & Hazel Bondeson, Howard & Gladys M. Light, Floyd Grant, and Arthur E. & Katherine Bondeson.

Cass County, Minnesota, for Taxes for the Year 1963.

Table with columns: VALUATIONS BY SCHOOL DISTRICTS AS EQUALIZED BY DEPARTMENT OF TAXATION, Tax including State Homestead, SPECIAL TAXES, TOTAL TAXES, PAID, WHEN PAID, Number of Receipt, March Settlement, June Settlement, November Settlement, Collections to First Monday in January 1965, Delinquent on First Monday in January 1965, Total Delinquent Tax and Penalty, and REMARKS. Includes tax details for various districts and payment schedules.

CARLTON'S SYLVAN PARK NORTH SYLVAN LAKE

LAND & ALLEN'S 1st ADD'N TO SYLVAN BEACH & ALLEN'S 2nd ADD'N TO SYLVAN BEACH & ALLEN'S 3rd ADD'N TO SYLVAN BEACH

Assessment Roll and Tax List of Real Property in the Town of Sylvan

* Indicate Type of Property: R-Residential, C-Commercial, I-Industrial, U-Utility, F-Farm, L-Lakeshore, T-Timber, M-Mineral

Form 50 MILLER-DAVIS CO., MINNEAPOLIS

Table with columns: IN WHOSE NAME ASSESSED, DESCRIPTION OF PROPERTY, TRUE AND FULL VALUATIONS, ASSESSED VALUATIONS, and FINAL EQUALIZED VALUE. Includes entries for Frank L. & Lizzie A. Allen, Lizzie A. Newkirk, W. Blakely & Kathryn English, etc.

Summary table with columns: District No., Rate, and Total Assessed Value. Totals: 1100, 761,286, 56316.

Cass County, Minnesota, for Taxes for the Year 1963.

Table with columns: VALUATIONS BY SCHOOL DISTRICTS AS EQUALIZED BY DEPARTMENT OF TAXATION, TAXES, PAID, WHEN PAID, Number of Receipt, March Settlement, June Settlement, November Settlement, Collections to First Monday in January 1965, Delinquent on First Monday in January 1965, Total Delinquent Tax and Penalty, REMARKS. Includes entries for 1st and 2nd half payments for various districts.

Assessment Roll and Tax List of Real Property in the Town of Sylvan

* Indicate Type of Property: R-Residential, C-Commercial, I-Industrial, U-Utility, F-Farm, L-Lakeshore, T-Timber, M-Mineral

Form 50 MILLER-DAVIS CO., MINNEAPOLIS

Table with columns: IN WHOSE NAME ASSESSED, DESCRIPTION OF PROPERTY, TRUE AND FULL VALUATIONS, ASSESSED VALUATIONS, and FINAL EQUALIZED VALUE. Includes names like Walter E. Johnson, Floyd R. Harne, R.B. + Evelyn E. Roll, etc.

Cass County, Minnesota, for Taxes for the Year 1963.

Table with columns: VALUATIONS BY SCHOOL DISTRICTS AS EQUALIZED BY DEPARTMENT OF TAXATION, Tax including State Homestead, State Tax on Non-Homestead, SPECIAL TAXES, TOTAL TAXES, PAID, WHEN PAID, Number of Receipt, March Settlement, June Settlement, November Settlement, Collections to First Monday in January 1965, Delinquent on First Monday in January 1965, Total Delinquent Tax and Penalty, REMARKS. Includes tax amounts and payment dates.

Vertical text on the left margin: SYLVAN SHADY SHORES, LAND & ASSESSORS 1st ADDY TO SYLVAN BEACH, CARLYON'S SYLVAN PARK, NORTH SYLVAN LAKE

Vertical text on the right margin: JACOBSON ACRES, LAND & ASSESSORS 2nd ADDY TO SYLVAN BEACH, LAND & ASSESSORS 3rd ADDY TO SYLVAN BEACH

Assessment Roll and Tax List of Real Property in the Town of Sylvan, Minnesota

Form 50 MILLER-DAVIS CO., MINNEAPOLIS

* Indicate Type of Property: R-Residential, C-Commercial, Industrial, U-Utility, F-Farm, L-Lakeshore, T-Timber, M-Mineral

Table with columns: IN WHOSE NAME ASSESSED, SYLVAN SHADY SHORES SUBDIVISION, TRUE AND FULL VALUATIONS, ASSESSED VALUATIONS, and FINAL EQUALIZED VALUE. Includes entries for Kenneth R. + Grace L. Johnson, O. N. James, Orval H. + Esther A. James, John Schoban, Lief + Dolores M. Unstad, and Carl S. Turner.

Cass County, Minnesota, for Taxes for the Year 1963.

Table with columns: VALUATIONS BY SCHOOL DISTRICTS AS EQUALIZED BY DEPARTMENT OF TAXATION, Tax Including State Homestead, State Tax on Non-Homestead, SPECIAL TAXES, TOTAL TAXES, PAID, WHEN PAID, Number of Receipt, March Settlement, June Settlement, November Settlement, Collections to First Monday in January 1965, Delinquent on First Monday in January 1965, Total Delinquent Tax and Penalty, and REMARKS. Includes handwritten entries for payments and amounts.

Assessment Roll and Tax List of Real Property in the Town of Sylvan

* Indicate Type of Property: R-Residential, C-Commercial, I-Industrial, U-Utility, F-Farm, L-Lakeshore, T-Timber, M-Mineral

Form 50 MILLER-DAVIS CO., MINNEAPOLIS

Table with columns: IN WHOSE NAME ASSESSED, DESCRIPTION OF PROPERTY, TRUE AND FULL VALUATIONS, ASSESSED VALUATIONS, and FINAL EQUALIZED VALUE. Includes entries for Nancy Walsdorf, Nancy L. Walsdorf, Delia Bailes, Steve + Freida Smyske, Adalbert C. + Lillian B. Elfert, Ernest + Eva Mae Munson, Herbert W. Fortner, State of Minnesota, Geo. P. + Emma D. Wilson, Clyde L. + Thelma Woods, James B. + Pearl M. Nelson.

Cass County, Minnesota, for Taxes for the Year 1963.

Table with columns: VALUATIONS BY SCHOOL DISTRICTS AS EQUALIZED BY DEPARTMENT OF TAXATION, Tax Including State Homestead, State Tax on Non-Homestead, SPECIAL TAXES, TOTAL TAXES, PAID, WHEN PAID, Number of Receipt, March Settlement, June Settlement, November Settlement, Collections to First Monday in January 1963, Delinquent on First Monday in January 1963, Total Delinquent Tax and Penalty, REMARKS. Includes entries for Nancy Walsdorf, Nancy L. Walsdorf, Delia Bailes, Steve + Freida Smyske, Adalbert C. + Lillian B. Elfert, Ernest + Eva Mae Munson, Herbert W. Fortner, State of Minnesota, Geo. P. + Emma D. Wilson, Clyde L. + Thelma Woods, James B. + Pearl M. Nelson.

STAYAN SHADY SHORES, LAND & ALBERT'S 2800 BEACH, NORTH SYLVAN LAKE, CARLTON'S SYLVAN PARK

MC KISSON ACRES, LAND & ALBERT'S 2800 BEACH, NORTH SYLVAN LAKE, CARLTON'S SYLVAN PARK

Assessment Roll and Tax List of Real Property in the Town of Sylvan

* Indicate Type of Property: R-Residential, C-Commercial, Industrial, U-Utility, F-Farm, L-Lakeshore, T-Timber, M-Mineral

Form 5C MILLER-DAVIS CO., MINNEAPOLIS

Table with columns: IN WHOSE NAME ASSESSED, Sylvan Shady Shores SUBDIVISION, DESCRIPTION OF PROPERTY, TRUE AND FULL VALUATIONS, ASSESSED VALUATIONS, and FINAL EQUALIZED VALUE.

Handwritten entries for property owners: Kenneth A. L. + Betty A. Kalk, F. D. + Florence Schmidt, Gladys E. Datta, etc.

Cass County, Minnesota, for Taxes for the Year 1963.

Table with columns: SOLD FOR TAXES, VALUATIONS BY SCHOOL DISTRICTS AS EQUALIZED BY DEPARTMENT OF TAXATION, Tax Including State Homestead, State Tax on Non-Homestead, SPECIAL TAXES, TOTAL TAXES, PAID, WHEN PAID, Number of Receipt, March Settlement 1964, June Settlement 1964, November Settlement 1964, Penalty, Collections to First Monday in January 1965, Delinquent on First Monday in January 1965, Total Delinquent Tax and Penalty, REMARKS.

Handwritten entries for tax payments and remarks: 1st HALF PAID OCT 31 1964, 2nd HALF PAID OCT 31 1964, PAID IN FULL MAY 13 1964, etc.

Summary totals at the bottom of the page: 28, 882, 28, 910, 650, 260.

Assessment Roll and Tax List of Real Property in the Town of Sylvan

* Indicate Type of Property: R-Residential, C-Commercial, I-Industrial, U-Utility, F-Farm, L-Lakeshore, T-Timber, M-Mineral

Form 5-C - MILLER-DAVIS CO., MINNEAPOLIS

Table with columns: IN WHOSE NAME ASSESSED, DESCRIPTION OF PROPERTY, TRUE AND FULL VALUATIONS, ASSESSED VALUATIONS, and FINAL EQUALIZED VALUE. Includes handwritten entries for Anton Jr. + Florence Yager, Steve Smykle + A.C. Elfert, etc.

Handwritten names and addresses in the 'IN WHOSE NAME ASSESSED' column, including Anton Jr. + Florence Yager, Steve Smykle + A.C. Elfert, and others.

Cass County, Minnesota, for Taxes for the Year 1963.

Table with columns: VALUATIONS BY SCHOOL DISTRICTS AS EQUALIZED BY DEPARTMENT OF TAXATION, Tax including State Homestead, State Tax on Non-Homestead, SPECIAL TAXES, TOTAL TAXES, PAID, WHEN PAID, Number of Receipt, March Settlement, June Settlement, November Settlement, Collections to First Monday in January 1965, Delinquent on First Monday in January 1965, Total Delinquent Tax and Penalty, and REMARKS.

Handwritten tax data and remarks in the right-hand table, including district numbers, tax amounts, and payment dates.

Summary totals at the bottom of the tax table, including totals for 103, 103, 51492, 14664, 1894, 68050, 9522, 37065, 11509, and 9954.

Assessment Roll and Tax List of Real Property in the Town of Sylvan

* Indicate Type of Property: R-Residential, C-Commercial, I-Industrial, U-Utility, F-Farm, L-Lakeshore, T-Timber, M-Mineral

Form 50 MILLER-DAVIS CO., MINNEAPOLIS

Table with columns: IN WHOSE NAME ASSESSED, DESCRIPTION OF PROPERTY, TRUE AND FULL VALUATIONS, ASSESSED VALUATIONS, and FINAL EQUALIZED VALUE. Includes entries for Sylvan Shady Shores subdivision with names like Clyde L. & Thelma Woods, Henry Drahos, James B. & Pearl M. Nelson, etc.

Cass County, Minnesota, for Taxes for the Year 1963.

Table with columns: VALUATIONS BY SCHOOL DISTRICTS AS EQUALIZED BY DEPARTMENT OF TAXATION, Tax Including State Homestead, SPECIAL TAXES, TOTAL TAXES, PAID, WHEN PAID, Number of Receipt, March Settlement, June Settlement, November Settlement, Penalty, Collections to First Monday in January 1965, Delinquent on First Monday in January 1965, Total Delinquent Tax and Penalty, REMARKS. Includes tax details for various districts and property owners.

Vertical text on the left edge: CARLTON'S SYLVAN PARK, NORTH SYLVAN LAKE, LAND & ALLEN'S 3RD ADD'N TO SYLVAN BEACH, LAND & ALLEN'S 1ST ADD'N TO SYLVAN BEACH, SYLVAN SHADY SHORES, J.P. KISSON ACRES, LAND & ALLEN'S 2ND ADD'N TO SYLVAN BEACH, LAND & ALLEN'S 3RD ADD'N TO SYLVAN BEACH.

Assessment Roll and Tax List of Real Property in the Town of Sylvan

* Indicate Type of Property: R-Residential, C-Commercial, Industrial, U-Utility, F-Farm, L-Lakeshore, T-Timber, M-Mineral

Form 50 - MILLEDGEVILLE CO., MINNEAPOLIS

Table with columns: IN WHOSE NAME ASSESSED, DESCRIPTION OF PROPERTY, TRUE AND FULL VALUATIONS, ASSESSED VALUATIONS, and FINAL EQUALIZED VALUE. Includes entries for Herbert + Olga N. Edwardson, Clinton A. + Eleanor Larson, Oswald S. Koslosky, Henry A. + Katherine I. Schaper, Ralph R. + Grace M. Bonham, Neiland H. Ballard, Herbert E. + Martha Ballard, Walter E. + Margaret Johnson, Guy L. + Leonette Rice, William L. + Melvina Grasse, Earl M. + Alice J. Nelson, and Clinton O. + Carolyn M. Larson.

Cass County, Minnesota, for Taxes for the Year 1963.

Table with columns: VALUATIONS BY SCHOOL DISTRICTS AS EQUALIZED BY DEPARTMENT OF TAXATION, Tax Including State Homestead, State Tax on Non-Homestead, SPECIAL TAXES, TOTAL TAXES, PAID, WHEN PAID, Number of Receipt, March Settlement 1964, June Settlement 1964, November Settlement 1964, Collections to First Monday in January 1965, Delinquent on First Monday in January 1965, Total Delinquent Tax and Penalty, and REMARKS. Includes entries for lots 1 through 20 with tax amounts and payment dates.

Assessment Roll and Tax List of Real Property in the Town of Sylvan

* Indicate Type of Property: R-Residential, C-Commercial, I-Industrial, U-Utility, F-Farm, L-Lakeshore, T-Timber, M-Mineral

Form 50 MILLER-DAVIS CO., MINNEAPOLIS

Table with columns: IN WHOSE NAME ASSESSED, DESCRIPTION OF PROPERTY, TRUE AND FULL VALUATIONS, ASSESSED VALUATIONS, and FINAL EQUALIZED VALUE. Includes entries for Ronald Earl Larsen, Richard Anderson, and Richard D. Anderson.

Cass County, Minnesota, for Taxes for the Year 1963.

Table with columns: SOLD FOR TAXES, VALUATIONS BY SCHOOL DISTRICTS AS EQUALIZED BY DEPARTMENT OF TAXATION, Tax including State Homestead, SPECIAL TAXES, TOTAL TAXES, PAID, WHEN PAID, Number of Receipt, March Settlement, June Settlement, Penalty, November Settlement, Collections to First Monday in January 1965, Delinquent on First Monday in January 1965, Total Delinquent Tax and Penalty, REMARKS. Includes handwritten notes and totals.

Vertical text on the left edge: STAVAN BEACH, ALLEN'S 1st ADD'N, ALLEN'S 2nd ADD'N, ALLEN'S 3rd ADD'N, ALLEN'S 4th ADD'N, ALLEN'S 5th ADD'N, ALLEN'S 6th ADD'N, ALLEN'S 7th ADD'N, ALLEN'S 8th ADD'N, ALLEN'S 9th ADD'N, ALLEN'S 10th ADD'N, ALLEN'S 11th ADD'N, ALLEN'S 12th ADD'N, ALLEN'S 13th ADD'N, ALLEN'S 14th ADD'N, ALLEN'S 15th ADD'N, ALLEN'S 16th ADD'N, ALLEN'S 17th ADD'N, ALLEN'S 18th ADD'N, ALLEN'S 19th ADD'N, ALLEN'S 20th ADD'N.

Vertical text on the right edge: MC KISSON ACRES

Assessment Roll and Tax List of Real Property in the Town of Sylvan

* Indicate Type of Property: R-Residential, C-Commercial, I-Industrial, U-Utility, F-Farm, L-Lakeshore, T-Timber, M-Mineral

Form 50 - MILLER-DAVIS CO., MINNEAPOLIS

Table with columns: IN WHOSE NAME ASSESSED, DESCRIPTION OF PROPERTY, TRUE AND FULL VALUATIONS, ASSESSED VALUATIONS, and FINAL EQUALIZED VALUE. Includes handwritten entries for Leo Meister & George Jones, Mabel C. McKisson, etc.

Cass County, Minnesota, for Taxes for the Year 1963.

Table with columns: SOLD FOR TAXES, VALUATIONS BY SCHOOL DISTRICTS AS EQUALIZED BY DEPARTMENT OF TAXATION, Tax including State Homestead, SPECIAL TAXES, TOTAL TAXES, PAID, WHEN PAID, Number of Receipt, March Settlement 1964, June Settlement 1964, Penalty, November Settlement 1964, Collections to First Monday in January 1965, Delinquent on First Monday in January 1965, Total Delinquent Tax and Penalty, REMARKS.

