

ASSESSMENT & TAX LIST - 1957

Sylvan















Assessment of

Form 314 WILSON-DAY COMPANY, MINNEAPOLIS

COLLECTIONS OF TAXES OF 1958

Town OF Sylvan, CASS COUNTY, MINNESOTA

NAME OF OWNER	FUNDS	MARCH SETTLEMENT	JUNE SETTLEMENT	NOV. SETTLEMENT	Amount Collected from Nov. 1957 to First Monday in Jan. 1958	REDUCTIONS	Total Reductions and Collected	BALANCE UNCOLLECTED	ADDITIONS	Total Uncollected to First Monday in January, 1958
		1958	1958	1958						
	State-Non-Homestead,	50 87	465 05	328 97	251					
	State-Homestead,	48 69	449 85	338 20	517					
	County Revenue,	247 76	2366 44	1720 87	2635					
	County Road and Bridge,	121 53	1160 68	844 11	1292					
	County Welfare,	382 02	3648 41	2653 33	4063					
	County Bond and Interest,	350 8	335 05	243 67	373					
	Welfare Deficit	2277	217 43	158 13	243					
	R. + B. Sub Proj.	4052	386 89	281 37	430					
	PERA	2374	226 72	164 88	253					
	Town Revenue,	1110	106 00	77 10	118					
	Town Road and Bridge,	13774	1315 44	956 66	1465					
	Town Drag,	811	7737	5627	86					
	Town State Loan,									
	Co. Nurse	1621	15475	11255	172					
	R. + B. Bldg.	1620	15475	11255	173					
	Cass Co. Agri.	406	3869	2814	44					
	School Local 1 Mill,	811	7738	5628	87					
	School Special,	29624	337144	257047	2546					
	School State Loan,									
	Deficiency	45145	431155	313563	4801					
	Tuition									
	Transportation	827	7893	5740	87					
	B. + Int	45850	437964	318481	4877					
	C. O.	4095	39080	28444	436					
	#1 Debt	1931	53001	35346	635					
	PERA	430	4101	2983	46					
	Totals	245353	2428428	1774912	25630					

MARCH SETTLEMENT	School District No.	LOCAL 1 MILL	SPECIAL	STATE LOAN	B. + Int.	Deficiency	Transp.	C. O.	#1 Debt.	PERA	TOTALS
	#2 116 A <sup>2</sup>	52	1282		2903	2858	52	260	559	27	7993
	#1 116 A	126	6294		7124	7014	129	636	1372	67	22762
	#1 116 A	384	9603		21738	21404	392	1940		204	55665
	#1 116 A	249	12445		14085	13869	254	1259		132	42293
	Totals	811	29624		45850	45145	827	4095	1931	430	128713
	#2 116 A	3271	163528		185115	182236	3336	16516	35616	1733	591351
	#1 116 A	2477	123866		140216	138036	2527	12510		1313	420945
	#1 116 A	394	9841		22280	21934	401	1992		209	57051
	#2 116 A	1596	39909		90353	88949	1629	8062	17385	846	248729
	Totals	7738	337144		437964	431155	7893	39080	53001	4101	1318076
	#1 116 A	182	4545		10290	10130	185	918		96	26346
	#2 116 A	2200	110002		124522	122586	2244	11110		1166	373830
	#1 116 A	792	19782		44777	44089	808	3997		419	123282
	#1 116 A	2454	122718		138892	136758	2503	12419	26728	1302	443774
	Totals	5628	257047		318481	313563	5740	28444	35346	2983	967232
	#2 116 A	43	1064		2409	2372	43	215	463	23	6632
	#1 116 A	16	785		889	875	16	79	172	08	2840
	#1 116 A	28	697		1579	1554	28	142		15	4043
	Totals	87	2546		4877	4801	87	436	635	46	13515
	Totals										
	Totals										

Real Estate 133-29  
Sylvan Beach  
Land & Alien's Village of Sylvan  
North Sylvan  
Lyon's Sylvan Park







Assessment Roll and Tax List of Real Property in the Town of Sylvan

Indicate Type of Property: R-Residential, C-Commercial, I-Industrial, U-Utility, F-Farm, L-Lakeshore, T-Timber, M-Mineral

Cass County, Minnesota, for Taxes for the Year 1957.

133-29 Real 132-29

Table with columns: IN WHOSE NAME ASSESSED, TO WHOM TRANSFERRED, SUBDIVISION, TRUE AND FULL VALUATIONS, ASSESSED VALUATIONS, and FINAL EQUALIZED VALUE.

Table with columns: VALUATIONS BY SCHOOL DISTRICTS AS EQUALIZED BY DEPARTMENT OF TAXATION, SOLD FOR TAXES, PAID, WHEN PAID, Number of Receipt, March Settlement 1958, June Settlement 1958, November Settlement 1958, Collections to First Monday in January 1959, Delinquent on First Monday in January 1959, Total Delinquent Tax and Penalty, and REMARKS.

Sylvan Beach Addition to Sylvan, Land & Allen's Village of Sylvan, North Sylvan, 11608 S. Sylvan Park











Assessment Roll and Tax List of Real Property in the Town of Sylvan

Indicate Type of Property: R-Residential, C-Commercial, I-Industrial, U-Utility, F-Farm, L-Lakeshore, T-Timber, M-Mineral

Cass County, Minnesota, for Taxes for the Year 1957.

Table with columns: IN WHOSE NAME ASSESSED, TO WHOM TRANSFERRED, DESCRIPTION OF PROPERTY, TRUE AND FULL VALUATIONS, ASSESSED VALUATIONS, VALUATIONS BY SCHOOL DISTRICTS AS EQUALIZED BY DEPARTMENT OF TAXATION, SOLD FOR TAXES, PAID, WHEN PAID, Number of Receipt, March Settlement 1958, June Settlement 1958, November Settlement 1958, Collections to First Monday in January 1959, Delinquent on First Monday in January 1959, Total Delinquent Tax and Penalty, REMARKS.

133-29 Real

Sylvan Beach Addition to Sylvan 133-30 Land & Allien's Village of Sylvan North Sylvan 11700's Sylvan Park







Assessment Roll and Tax List of Real Property in the Town of Sylvan

\* Indicate Type of Property: R-Residential, C-Commercial, I-Industrial, U-Utility, F-Farm, L-Lakeshore, T-Timber, M-Mineral

Cass County, Minnesota, for Taxes for the Year 1957.

Table with columns: IN WHOSE NAME ASSESSED, TO WHOM TRANSFERRED, DESCRIPTION OF PROPERTY, TRUE AND FULL VALUATIONS, ASSESSED VALUATIONS, and FINAL EQUALIZED VALUE.

Table with columns: VALUATIONS BY SCHOOL DISTRICTS AS EQUALIZED BY DEPARTMENT OF TAXATION, TAX INCLUDING STATE HOMESTEAD, SPECIAL TAXES, TOTAL TAXES, PAID, WHEN PAID, Number of Receipt, March Settlement, June Settlement, November Settlement, Collections to First Monday in January, Delinquent on First Monday in January, Total Delinquent Tax and Penalty, and REMARKS.

133-29

133-30

Land & Alien's Village of Sylvan North Sylvan 1700's Sylvan Park







Assessment Roll and Tax List of Real Property in the town of Sylvan

\* Indicate Type of Property: R-Residential, C-Commercial, I-Industrial, U-Utility, F-Farm, L-Lakeshore, T-Timber, M-Mineral

Cass County, Minnesota, for Taxes for the Year 1957.

IN WHOSE NAME ASSESSED	DESCRIPTION OF PROPERTY			TRUE AND FULL VALUATIONS				ASSESSED VALUATIONS						FINAL EQUALIZED VALUE	
	Sec. of Lot	Town or Block	No. of Acres of Land	LAND	BUILDINGS	MACHINERY	TOTAL	RURAL		ALL OTHER		MACHINERY	TOTAL		Total Assessed Value as Equalized by the Board of Review
								Exclusive of Structures and Improvements	Structures and Other	Permanently Attached to Real Estate	Full Value				
John A. Miller Minnesota Power & Light Co.			20 acc. Town of Sylvan 133 29 12 25 52 7/8 70 R												
"			24 40 70 " T												
"			3 SW 1/4 of NE 1/4												
"			4 35 acc of SE 1/4 of NE 1/4												
Horns, Rhin & Emily Lindall			5 5 acc. of SE 1/4 of NE 1/4												
Cuyuna Range Power Co.			6 20 acc of NE 1/4 of NW 1/4												
Martin J. & Bertha R. Phillips			7 less 6.9 acc. & Ref. NW 1/4 of NW 1/4												
Guy J. & Mabel Smith Roger R. & Laura Peterson			8 less Rtg. & less Part lying below 1186' contour above & less cemetery SW 1/4 of NW 1/4												
W. H. & Inez Palmer			9 SE 1/4 of NW 1/4												
Minnesota Power & Light Co. Roger R. & Laura Peterson			10 6.9 acc. of NW 1/4 of NW 1/4												
W. H. & Inez Palmer			11 NE 1/4 of SW 1/4												
State of Minnesota			12 NW 1/4 of SW 1/4												
Minnesota Power & Light Co.			13 SW 1/4 of SW 1/4												
"			14 SE 1/4 of SW 1/4												
Albert J. Cunningham			15 2.20 acc. of NW 1/4 of NE 1/4												
Minnesota Power & Light Co.			16 NE 1/4 of SE 1/4												
"			17 NW 1/4 of SE 1/4												
"			18 SW 1/4 of SE 1/4												
"			19 SE 1/4 of SE 1/4												
"			20 8 acc. of SW 1/4 of NW 1/4												
Continued on next page			52732												

SOLD FOR TAXES	VALUATIONS BY SCHOOL DISTRICTS AS EQUALIZED BY DEPARTMENT OF TAXATION						Tax Including State Homestead	State Tax on Non-Homestead	SPECIAL TAXES	TOTAL TAXES	PAID	WHEN PAID	Number of Receipt	March Settlement 1958	June Settlement 1958	Penalty	November Settlement 1958	Penalty	Collections to First Monday in January 1959	Penalty	Delinquent on First Monday in January 1959	Total Delinquent Tax and Penalty	REMARKS
	District No.	District No.	District No.	District No.	District No.	District No.																	
	Rate	Rate	Rate	Rate	Rate	Rate																	
	1880					1880			1880	1	PAID IN FULL DEC 5 1958	17322											
	2294					2294	48		2342	2	2nd Half Paid OCT 3 1 1958	17741											
	3822					3822	80		3902	3	1st Half Paid MAY 3 1 1958	16315			1171								1880 150
	3344					3344	70		3414	4	2nd Half Paid OCT 3 1 1958	17741			1951								
	16720					16720	198		16918	5	1st Half Paid MAY 3 1 1958	16315			1951								
	1910					1910	40		1950	6	2nd Half Paid OCT 3 1 1958	17742			16918								5425
	2406					2406			2406	7	1st Half Paid MAY 3 1 1958	16316			975								
	2026					2026	46		2072	8	2nd Half Paid OCT 3 1 1958	17622			1203								5488
	3140					3140	70		3210	9	1st Half Paid MAY 3 1 1958	11578			1203								5487
	636					636	14		650	10	PAID IN FULL MAY 3 1 1958	11660			2872								7180
	2962					2962	62		3024	11	PAID IN FULL FEB 4 1958	157	3210										
	3822					3822	80		3902	13	PAID IN FULL FEB 4 1958	157	3024										7180
	3822					3822	80		3902	14	2nd Half Paid OCT 3 1 1958	17742			3902								
	1592					1592			1592	15	1st Half Paid MAY 3 1 1958	16316			3902								
	3822					3822	80		3902	16	PAID IN FULL FEB 1 3 1958	208	1592										7395
	3822					3822	80		3902	17	2nd Half Paid OCT 3 1 1958	17742			1951								
	3822					3822	80		3902	18	1st Half Paid MAY 3 1 1958	16316			1951								
	3822					3822	80		3902	19	2nd Half Paid OCT 3 1 1958	17742			1951								
	764					764	16		780	20	1st Half Paid MAY 3 1 1958	16317			1951								
	7572					7572			780		PAID IN FULL MAY 3 1 1958	16317			780								
	58856					58856	1124		67552					7826	39133								1880
	66428					66428																	

133-29 R 133-30 Land & Alien's Village of Sylvan North Sylvan P.O. Box 88 Sylvan



Assessment Roll and Tax List of Real Property in the Town of Sylvan

\* Indicate Type of Property: R-Residential, C-Commercial, I-Industrial, U-Utility, F-Farm, L-Lakeshore, T-Timber, M-Mineral

Form 3CD (56) JULY-STATE DEPT. MINNAPOLIS

133-29

133-29

IN WHOSE NAME ASSESSED	TO WHOM TRANSFERRED	DESCRIPTION OF PROPERTY				TRUE AND FULL VALUATIONS							ASSESSED VALUATIONS					FINAL EQUALIZED VALUE		
		SUBDIVISION	Sec. or Lot	Town or Block	No. of Acres of Land	LAND Exclusive of Structures and Improvements	BUILDINGS and Other Structures	MACHINERY Permanently Attached to Real Estate	TOTAL True and Full Value	RURAL		ALL OTHER			TOTAL ASSESSED VALUE	Total Assessed Value as Equalized by the Board of Review				
										Acres	100ths	Homestead Up to \$4,000 20%	Over \$4,000 and Non-Homestead 33 1/3%	Timber Land Class 3e 20%			Homestead Up to \$4,000 25%		Over \$4,000 and Non-Homestead 40%	MACHINERY Permanently Attached to Real Estate 33 1/3%
Minnesota Power & Light Co.		1/2000 of NE 1/4 of NE 1/4	17	133	29	20														
State of Minnesota		2/400 of NW 1/4 of NE 1/4																		
		3 SW 1/4 of NE 1/4																		
		4 SE 1/4 of NE 1/4																		
Hono. R. & Emily J. Tindall		5 E. 15' side of E 1/2 of 7E 1/4 of 7E 1/4	3	75																
Harry Seckler		6 2000 of NE 1/4 of NW 1/4 less 12.4400 Ry.	7	60																
		7 NW 1/4 of NW 1/4																		
		8 SW 1/4 of NW 1/4																		
		9 SE 1/4 of NW 1/4																		
State of Minnesota		10 1/400 of NW 1/4 of 7E 1/4																		
		11 NE 1/4 of SW 1/4																		
		12 NW 1/4 of SW 1/4																		
		13 SW 1/4 of SW 1/4																		
		14 SE 1/4 of SW 1/4																		
Gull River Cemetery Assn.		15 200' of 226' of SW 1/4 of 7W 1/4																		
		16 NE 1/4 of SE 1/4																		
		17 NW 1/4 of SE 1/4																		
		18 SW 1/4 of SE 1/4																		
		19 SE 1/4 of SE 1/4																		
		20																		

3135

Cass County, Minnesota, for Taxes for the Year 1957.

SOLD FOR TAXES	VALUATIONS BY SCHOOL DISTRICTS AS EQUALIZED BY DEPARTMENT OF TAXATION						Tax including State Homestead	State Tax on Non-Homestead	SPECIAL TAXES	TOTAL TAXES	PAID	WHEN PAID	Number of Receipt	March Settlement 1958	June Settlement 1958	Penalty 1958	November Settlement 1958	Penalty 1958	Collections to First Monday in January 1959	Penalty 1959	Delinquent on First Monday in January 1959	Total Delinquent Tax and Penalty	REMARKS
	District No.	District No.	District No.	District No.	District No.	District No.																	
	Rate	Rate	Rate	Rate	Rate	Rate																	
1						60	1910	40	1950	1	2nd half paid Oct 31 1958 17941												
2										2	1st half paid MAY 31 1958 16315			975			975						
3										3													
4										4													
5						\$ 25	796		796	5	PAID IN FULL MAY 31 1958 11689			796								5425	
6						\$ 77	2452		2452	6	PAID IN FULL MAY 31 1958 11623			2452								2098	
7										7													
8										8													
9										9													
10										10													
11										11													
12										12													
13										13													
14										14													
15										15													
16										16													
17										17													
18										18													
19										19													
20										20													

4102

60

1622

5158

40

5198

4223

975

Sylvan  
Hand & Allen's Village of Sylvan  
North Sylvan  
Lyon's Sylvan



Assessment Roll and Tax List of Real Property in the Town of Sylvan

Indicate Type of Property: R-Residential, C-Commercial, I-Industrial, U-Utility, F-Farm, L-Lakeshore, T-Timber, M-Mineral

Form SCD (56) BULLIS-BAYNE COMPANY, MINNEAPOLIS

133-29

Charles

Charles

Minnesota Power & Light Co.

Table with columns: IN WHOSE NAME ASSESSED, TO WHOM TRANSFERRED, SUBDIVISION, TRUE AND FULL VALUATIONS, ASSESSED VALUATIONS, FINAL EQUALIZED VALUE. Includes rows for Clyde & Shelma Barber, Brower & Laura Peterson, and Charles R. Woodhouse.

596 96

Cass County, Minnesota, for Taxes for the Year 1957.

Table with columns: VALUATIONS BY SCHOOL DISTRICTS AS EQUALIZED BY DEPARTMENT OF TAXATION, TAXES, PAID, WHEN PAID, Number of Receipt, March Settlement 1958, June Settlement 1958, November Settlement 1958, Collections to First Monday in January 1959, Delinquent on First Monday in January 1959, Total Delinquent Tax and Penalty, REMARKS. Includes rows for various districts and tax amounts.

598  
1248  
1846  
= 598  
120 = 1368  
120 = 1466  
54178  
3822  
58000  
906  
58906

29453  
18365  
11088

Sylvan  
Land & Alien's Village of Sylvan  
North Sylvan  
Myop's Sylvan Park



Assessment Roll and Tax List of Real Property in the Town of Sylvan

Indicate Type of Property: R-Residential, C-Commercial, I-Industrial, U-Utility, F-Farm, L-Lakeshore, T-Timber, M-Mineral

Table with columns: IN WHOSE NAME ASSESSED, TO WHOM TRANSFERRED, DESCRIPTION OF PROPERTY, TRUE AND FULL VALUATIONS, ASSESSED VALUATIONS, and FINAL EQUALIZED VALUE. Includes handwritten entries for Minnesota Power & Light Co., Roy G. & Eva Thon, J. I. & Ellen J. Marlow, C. A. & Verna G. Stanley, and George W. & Betty E. Franklin.

Cass County, Minnesota, for Taxes for the Year 1957.

Table with columns: SOLD FOR TAXES, VALUATIONS BY SCHOOL DISTRICTS AS EQUALIZED BY DEPARTMENT OF TAXATION, TAX INCLUDING STATE HOMESTEAD, SPECIAL TAXES, TOTAL TAXES, PAID, WHEN PAID, Number of Receipt, March Settlement 1958, June Settlement 1958, November Settlement 1958, Collections to First Monday in January 1959, Delinquent on First Monday in January 1959, Total Delinquent Tax and Penalty, and REMARKS. Includes handwritten calculations and tax amounts.

13-29

Land & Allen's Village of Sylvan, North Sylvan, Plyong's Sylvan Park













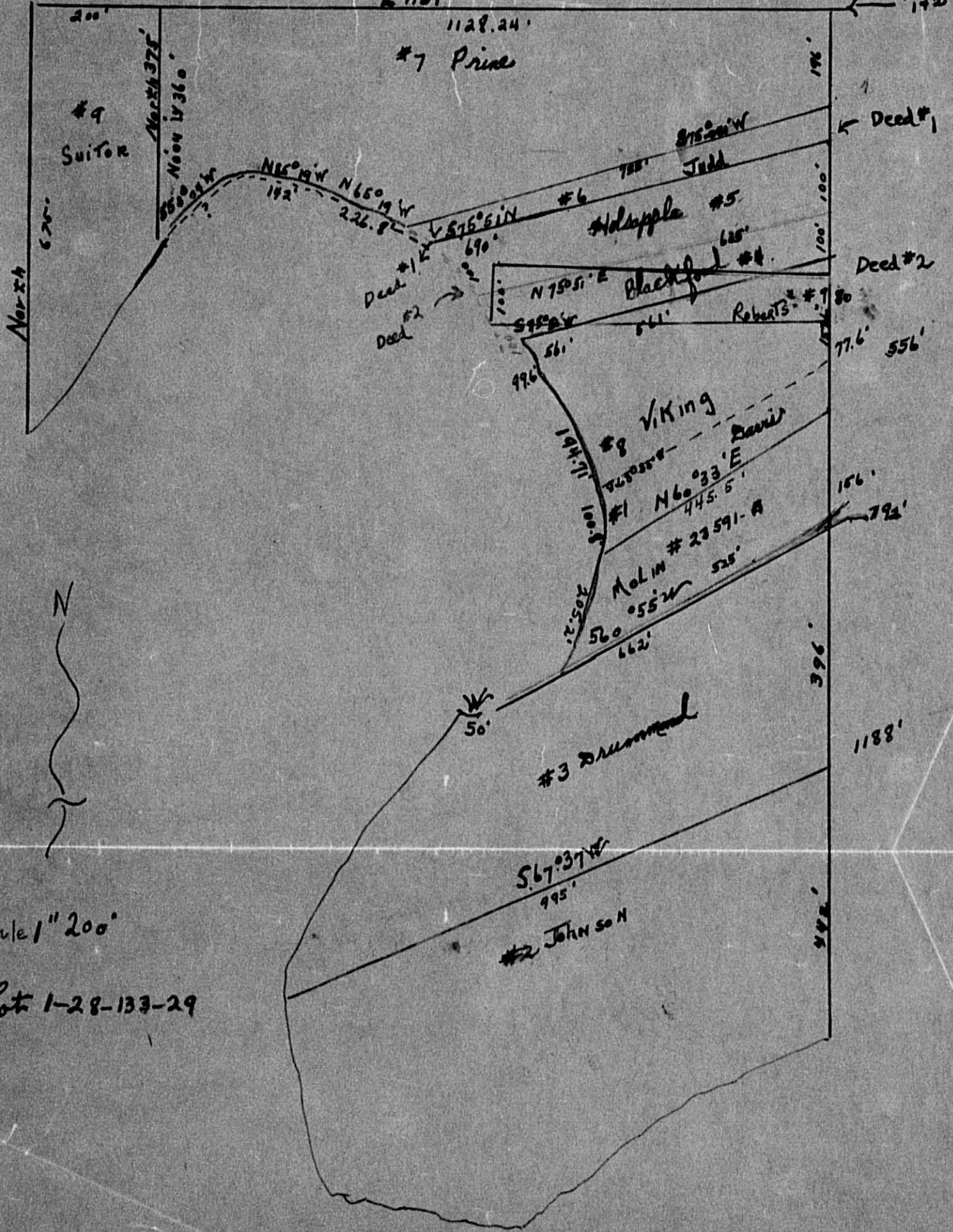


145  
SuiTon

Prof Begm Deed #1  
" #2

EAST

DEED 142



1128.24  
#7 Prine

#9 SuiTon

North 375'  
North 1436'

Deed #1

815.51' W  
Judd

N 85° 19' W 142'  
N 65° 19' W 226.8'

575.51' N  
#6

Halsapple #5

Deed #1  
Deed #2

N 75° 51' E  
575.51' W

Blackford #4

Deed #2

Roberts #7

99.6'

#8 Viking

N 60° 33' E  
445.5'

Molin #23591-A

560' 55" W  
662'

#3 Drummond

S 67° 37' W  
995'

#2 Johnson

1188'

396'

448'



Scale 1" = 200'

Lot 1-28-133-29



























Assessment Roll and Tax List of Real Property in the Town of Lylova

Indicate Type of Property: R-Residential, C-Commercial, I-Industrial, U-Utility, F-Farm, L-Lakeshore, T-Timber, M-Mineral

Cass County, Minnesota, for Taxes for the Year 1957.

Form 5CD (56) UNIFORM COUNTY, MINNESOTA

Main table with columns: IN WHOSE NAME ASSESSED, TO WHOM TRANSFERRED, DESCRIPTION OF PROPERTY, TRUE AND FULL VALUATIONS, ASSESSED VALUATIONS, VALUATIONS BY SCHOOL DISTRICTS AS EQUALIZED BY DEPARTMENT OF TAXATION, PAID, WHEN PAID, Number of Receipt, March Settlement 1958, June Settlement 1958, November Settlement 1958, Collections to First Monday in January 1959, Delinquent on First Monday in January 1959, Total Delinquent Tax and Penalty, REMARKS.

(Continued on next page)

11 93

4720  
424  
496

15260 278

15538

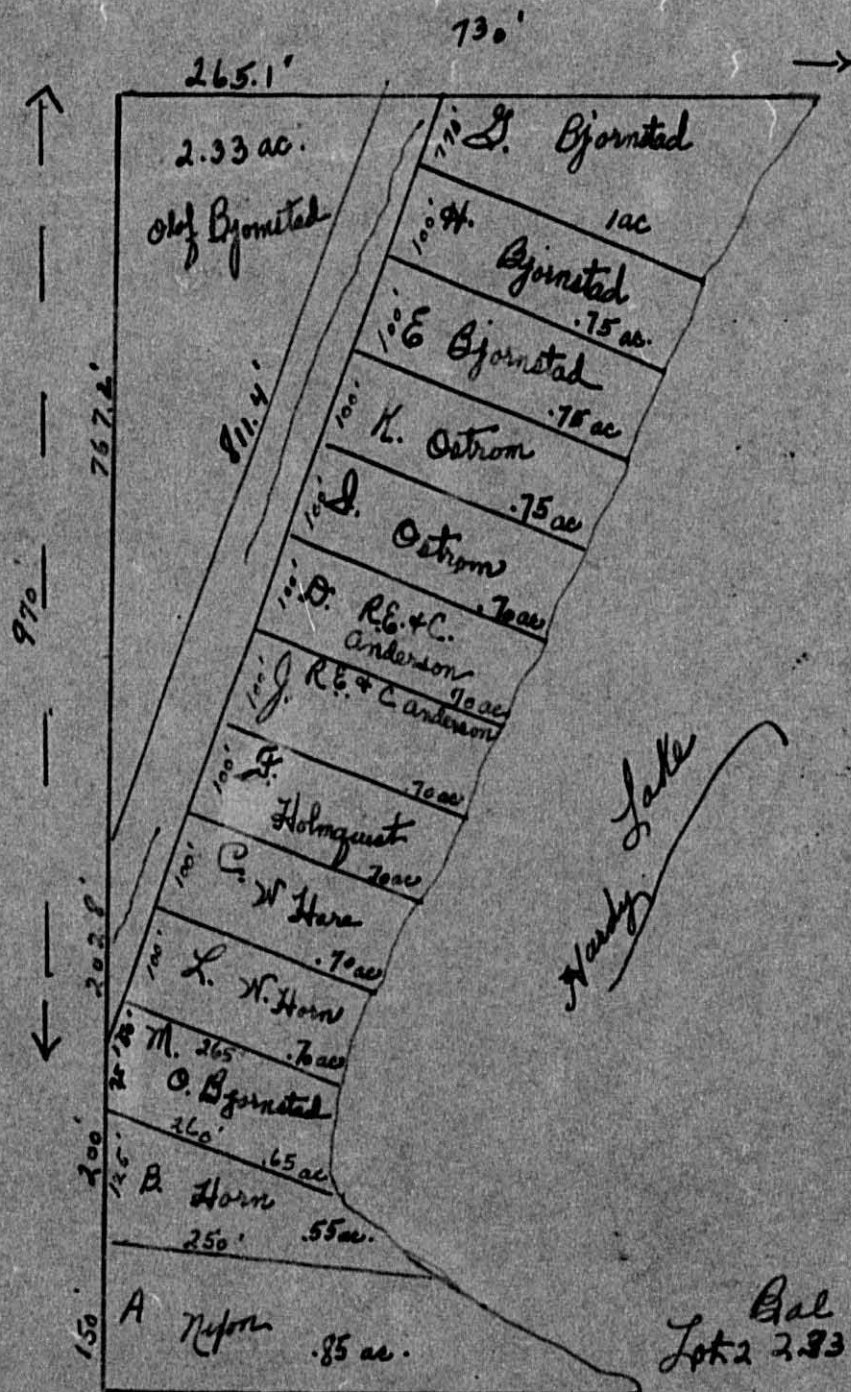
15538

Sylvan Beach Add'n to Sylvan Village of Sylvan North Sylvan Arlyon's Sylvan Park

133-20



Sydney  
1957



SCALE 1" = 200'  
Govt Lot 2, Sec 33-133-29

This map drawn from  
Reg. of Deeds records  
3-9-53

- A. Nelson
- B. Horn
- C. W. Horn
- D. R.C. Anderson
- E. Bjornstad
- F. Holmquist
- G. Bjornstad
- H. Bjornstad
- I. H. & A. Ostrom
- J. R.C. Anderson
- K. H. Ostrom
- L. L. W. Horn
- M. Bjornstad
- N. Bjornstad

Bal of  
Lot 2 2.33 ac.

11.89 ac  
3.02 ac road































Assessment Roll and Tax List of Real Property in the Town of Sylvan

Cass County, Minnesota, for Taxes for the Year 1957.

Form SCD (56) WILM-DAVIS COMPANY, MINNEAPOLIS

Indicate Type of Property: R-Residential, C-Commercial, I-Industrial, U-Utility, F-Farm, L-Lakeshore, T-Timber, M-Mineral

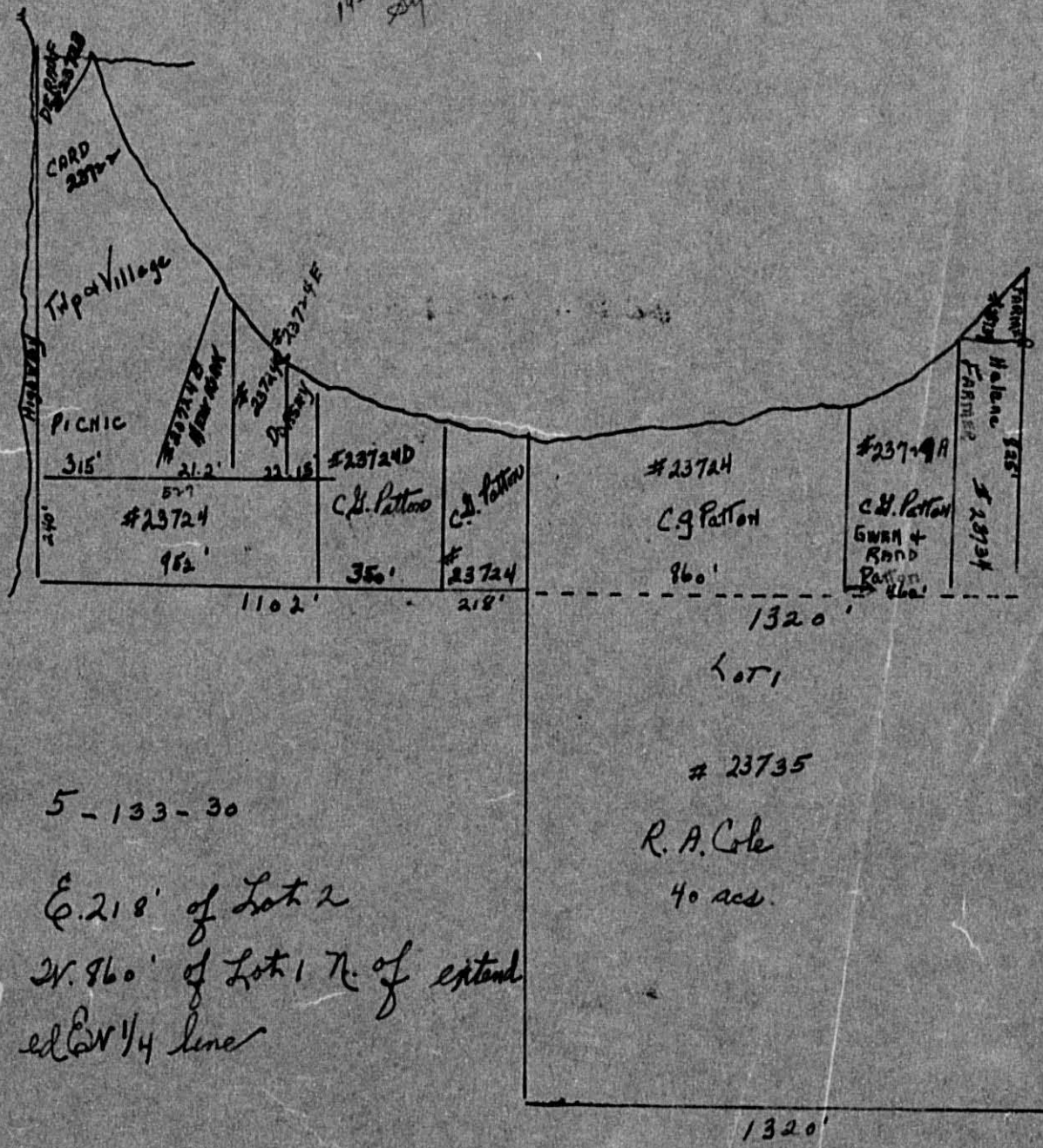
Table with columns: IN WHOSE NAME ASSESSED, TO WHOM TRANSFERRED, DESCRIPTION OF PROPERTY, TRUE AND FULL VALUATIONS, ASSESSED VALUATIONS, VALUATIONS BY SCHOOL DISTRICTS AS EQUALIZED BY DEPARTMENT OF TAXATION, TAXES, PAID, WHEN PAID, Number of Receipt, March Settlement 1958, June Settlement 1958, Penalty, November Settlement 1958, Collections to First Monday in January 1959, Delinquent on First Monday in January 1959, Total Delinquent Tax and Penalty, REMARKS.

(Continued on next page)

Land & Allen's Village of Sylvan North Sylvan Arroyos Sylvan Park



1957 *Seymour*



5-133-30

E. 218' of Lot 2  
W. 960' of Lot 1 N. of extend  
ed NW 1/4 line











Assessment Roll and Tax List of Real Property in the Town of Sylvan of Sylvan County, Minnesota

Form SCD (56) JULY-1956 EDITION, MINNAPOLIS

\* Indicate Type of Property: R-Residential, C-Commercial, I-Industrial, U-Utility, F-Farm, L-Lakeshore, T-Timber, M-Mineral

IN WHOSE NAME ASSESSED	TO WHOM TRANSFERRED	DESCRIPTION OF PROPERTY			TRUE AND FULL VALUATIONS				ASSESSED VALUATIONS					FINAL EQUALIZED VALUE	
		SUBDIVISION	Sec. of Lot	Town or Block	Rng.	Number of Acres of Land	Machinery Permanently Attached to Real Estate	RURAL		ALL OTHER		Machinery Permanently Attached to Real Estate	TOTAL ASSESSED VALUE		Total Assessed Value as Equalized by the Board of Review
								Acres	100ths	Homestead Up to \$4,000 20%	Over \$4,000 and Non-Homestead 33 1/3%				
<i>Arno &amp; Clara L. Bassler</i>		NE 1/4 of NE 1/4	7	133	20	40									
"	"	NW 1/4 of NE 1/4				40									
<i>O.A. &amp; Emma Berndt</i>		SW 1/4 of NE 1/4				40									
"	"	SE 1/4 of NE 1/4				40									
<i>Willis &amp; Flossie Mann</i>		NE 1/4 of NW 1/4				40									
"	"	SW 1/4 of NW 1/4				24	72								
"	"	SE 1/4 of NW 1/4				44	96								
<i>Ernest &amp; Ethel Whipple</i>		NE 1/4 of SW 1/4				20									
<i>Amiel Berndt</i>		NW 1/4 of SW 1/4				45	21								
"	"	SW 1/4 of SW 1/4				45	47								
"	"	SE 1/4 of SW 1/4				40									
<i>Wesley &amp; Emma Beck</i>		NE 1/4 of SE 1/4				40									
"	"	NW 1/4 of SE 1/4				40									
"	"	SW 1/4 of SE 1/4				40									
<i>Milford W. Wright</i>		SE 1/4 of SE 1/4				20									
<i>Daniel D. Phillips</i>		SE 1/4 of SE 1/4				20									

Cass County, Minnesota, for Taxes for the Year 1957.

SOLD FOR TAXES	VALUATIONS BY SCHOOL DISTRICTS AS EQUALIZED BY DEPARTMENT OF TAXATION						Tax Including State Homestead	State Tax on Non-Homestead	SPECIAL TAXES	TOTAL TAXES	PAID	WHEN PAID	Number of Receipt	March Settlement 1958	June Settlement 1958	November Settlement 1958	Penalty	Collections to First Monday in January 1959	Penalty	Delinquent on First Monday in January 1959	Total Delinquent Tax and Penalty	REMARKS	
	District No.	District No.	District No.	District No.	District No.	District No.																	
	Rate	Rate	Rate	Rate	Rate	Rate																	
1																							
2																							
3																							
4																							
5																							
6																							
7																							
8																							
9																							
10																							
11																							
12																							
13																							
14																							
15																							
16																							
17																							
18																							
19																							
20																							

Land & Allen's Village of Sylvan North Sylvan Park







Assessment Roll and Tax List of Real Property in the Town of Sylvan

Indicate Type of Property: R-Residential, C-Commercial, I-Industrial, U-Utility, F-Farm, L-Lakeshore, T-Timber, M-Mineral

Table with columns: IN WHOSE NAME ASSESSED, TO WHOM TRANSFERRED, DESCRIPTION OF PROPERTY, TRUE AND FULL VALUATIONS, ASSESSED VALUATIONS, and FINAL EQUALIZED VALUE.

Cass County, Minnesota, for Taxes for the Year 1957.

Table with columns: SOLD FOR TAXES, VALUATIONS BY SCHOOL DISTRICTS AS EQUALIZED BY DEPARTMENT OF TAXATION, Tax including State Homestead, State Tax on Non-Homestead, SPECIAL TAXES, TOTAL TAXES, PAID, WHEN PAID, Number of Receipt, March Settlement 1958, June Settlement 1958, Penalty, November Settlement 1958, Penalty, Collections to First Monday in January 1959, Penalty, Delinquent on First Monday in January 1959, Total Delinquent Tax and Penalty, REMARKS.

Land & Allen's Village of Sylvan North Sylvan Park















Assessment Roll and Tax List of Real Property in the Town of Sylvan, Cass County, Minnesota, for Taxes for the Year 1957.

Table with columns: IN WHOSE NAME ASSESSED, TO WHOM TRANSFERRED, DESCRIPTION OF PROPERTY, TRUE AND FULL VALUATIONS, ASSESSED VALUATIONS, VALUATIONS BY SCHOOL DISTRICTS AS EQUALIZED BY DEPARTMENT OF TAXATION, TAXES, PAID, WHEN PAID, Number of Receipt, March Settlement, June Settlement, November Settlement, Collections to First Monday in January 1959, Delinquent on First Monday in January 1959, Total Delinquent Tax and Penalty, REMARKS.

Land & Alien's Village of Sylvan North Sylvan Arlyon's Sylvan Park















Assessment Roll and Tax List of Real Property in the Town of Sylvan

Indicate Type of Property: R-Residential, C-Commercial, I-Industrial, U-Utility, F-Farm, L-Lakeshore, T-Timber, M-Mineral

Form SCD (56) JULY-1954 DEPT. OF REVENUE, MINNEAPOLIS

Table with columns: IN WHOSE NAME ASSESSED, TO WHOM TRANSFERRED, DESCRIPTION OF PROPERTY, TRUE AND FULL VALUATIONS, ASSESSED VALUATIONS, and FINAL EQUALIZED VALUE.

Cass County, Minnesota, for Taxes for the Year 1957.

Table with columns: VALUATIONS BY SCHOOL DISTRICTS AS EQUALIZED BY DEPARTMENT OF TAXATION, TAXES, PAID, WHEN PAID, and REMARKS.

Van Beach Add'n to Sylvan Land & Allen's Village of Sylvan North Sylvan 11vong's Sylvan Park



Assessment Roll and Tax List of Real Property in the Town of Sylvan

\* Indicate Type of Property: R-Residential, C-Commercial, I-Industrial, U-Utility, F-Farm, L-Lakeshore, T-Timber, M-Mineral

Form SCD (56) JULY 1956 DEPT. OF REVENUE, MINNAPOLIS

Table with columns: IN WHOSE NAME ASSESSED, TO WHOM TRANSFERRED, DESCRIPTION OF PROPERTY, TRUE AND FULL VALUATIONS, ASSESSED VALUATIONS, FINAL EQUALIZED VALUE.

Cass County, Minnesota, for Taxes for the Year 1957.

#2

Table with columns: SOLD FOR TAXES, VALUATIONS BY SCHOOL DISTRICTS AS EQUALIZED BY DEPARTMENT OF TAXATION, TAX INCLUDING STATE HOMESTEAD, SPECIAL TAXES, TOTAL TAXES, PAID, WHEN PAID, Number of Receipt, March Settlement 1958, June Settlement 1958, Penalty, November Settlement 1958, Penalty, Collections to First Monday in January 1959, Penalty, Delinquent on First Monday in January 1959, Total Delinquent Tax and Penalty, REMARKS.

Land & Allen's Village of Sylvan North Sylvan 11yongs Sylvan Park



Assessment Roll and Tax List of Real Property in the Town of Sylvan

Indicate Type of Property: R-Residential, C-Commercial, I-Industrial, U-Utility, F-Farm, L-Lakeshore, T-Timber, M-Mineral

Table with columns: IN WHOSE NAME ASSESSED, TO WHOM TRANSFERRED, DESCRIPTION OF PROPERTY, TRUE AND FULL VALUATIONS, ASSESSED VALUATIONS, and FINAL EQUALIZED VALUE. Includes handwritten entries for St. Olaf College and Minnesota Power & Light Co.

Cass County, Minnesota, for Taxes for the Year 1957.

Table with columns: SOLD FOR TAXES, VALUATIONS BY SCHOOL DISTRICTS AS EQUALIZED BY DEPARTMENT OF TAXATION, SPECIAL TAXES, TOTAL TAXES, PAID, WHEN PAID, Number of Receipt, March Settlement, June Settlement, November Settlement, Collections to First Monday in January, Delinquent on First Monday in January, Total Delinquent Tax and Penalty, and REMARKS. Includes handwritten entries for #2 and #2.

132-29, 133-29, 133-30

Land & Allen's Village of Sylvan, North Sylvan, Arlyon's Sylvan Park











Assessment Roll and Tax List of Real Property in the Town of Sylvan, Cass County, Minnesota, for Taxes for the Year 1957.

Form SCD (56) MILLER-BAYB COMPANY, MINNEAPOLIS

Indicate Type of Property: R-Residential, C-Commercial, I-Industrial, U-Utility, F-Farm, L-Lakeshore, T-Timber, M-Mineral

Table with columns: IN WHOSE NAME ASSESSED, TO WHOM TRANSFERRED, DESCRIPTION OF PROPERTY, TRUE AND FULL VALUATIONS, ASSESSED VALUATIONS, FINAL EQUALIZED VALUE.

Otto & Eleanor Citrowski

Theodore Prescott

Lewis J. & Doris Johnson

State of Minnesota

14 25

Cass County, Minnesota, for Taxes for the Year 1957.

Table with columns: VALUATIONS BY SCHOOL DISTRICTS AS EQUALIZED BY DEPARTMENT OF TAXATION, TAXES, PAID, WHEN PAID, Number of Receipt, March Settlement 1958, June Settlement 1958, November Settlement 1958, Collections to First Monday in January 1959, Delinquent on First Monday in January 1959, Total Delinquent Tax and Penalty, REMARKS.

#150  
247  
397

12644 164

12808

10706

2102

Land & Allen's Village of Sylvan North Sylvan Lyons's Sylvan Park















Assessment Roll and Tax List of Real Property in the Town of Sylvan

Indicate Type of Property: R-Residential, C-Commercial, I-Industrial, U-Utility, F-Farm, L-Lakeshore, T-Timber, M-Mineral

Form 30 (56) VALUE-BASE PROPERTY, MINNESOTA

DESCRIPTION OF PROPERTY

TRUE AND FULL VALUATIONS

ASSESSED VALUATIONS

Table with columns: IN WHOSE NAME ASSESSED, TO WHOM TRANSFERRED, SUBDIVISION, Sec. or Lot, Town or Block, Rng., Number of Acres of Land, No. School District, Indicate Homestead Yes or No, Indicate Agricultural Yes or No, Indicate Type of Property, LAND Exclusive of Structures and Improvements, BUILDINGS and Other Structures, MACHINERY Permanently Attached to Real Estate, TOTAL Trng and Full Value, RURAL (Homestead, Over \$4,000 and Non-Homestead, Timber Land Class 3c), ALL OTHER (Homestead, Over \$4,000 and Non-Homestead), MACHINERY Permanently Attached to Real Estate, TOTAL ASSESSED VALUE, Total Assessed Value as Equalized by the Board of Review, FINAL EQUALIZED VALUE.

Martin + Lena Loftis

State of Minnesota

State of Minnesota

Jessie Britton

Charles M. + Della D. Luttrell

Cass County, Minnesota, for Taxes for the Year 1957.

Table with columns: VALUATIONS BY SCHOOL DISTRICTS AS EQUALIZED BY DEPARTMENT OF TAXATION (District No., Rate, Mills), Tax including State Homestead, State Tax on Non-Homestead, SPECIAL TAXES, TOTAL TAXES, PAID, WHEN PAID (Month, Day, Year), Number of Receipt, March Settlement 1958, June Settlement 1958, November Settlement 1958, Penalty, Collections to First Monday in January 1959, Delinquent on First Monday in January 1959, Total Delinquent Tax and Penalty, REMARKS.

# 2

1, 2, 3, 4, 5, 6, 7, 8, 9, 10, 11, 12, 13, 14, 15, 16, 17, 18, 19, 20

SOLD FOR TAXES

SOLD FOR TAXES

1, 2, 3, 4, 5, 6, 7, 8, 9, 10, 11, 12, 13, 14, 15, 16, 17, 18, 19, 20

32, 1688, 32, 32, 32, 32, 32, 32, 32, 32, 64, 64, 64, 64, 64, 64, 64, 64, 64, 64, 64

32, 1688, 32, 32, 32, 32, 32, 32, 32, 32, 64, 64, 64, 64, 64, 64, 64, 64, 64, 64, 64

32, 1688, 32, 32, 32, 32, 32, 32, 32, 32, 64, 64, 64, 64, 64, 64, 64, 64, 64, 64, 64

32, 1688, 32, 32, 32, 32, 32, 32, 32, 32, 64, 64, 64, 64, 64, 64, 64, 64, 64, 64, 64

32, 1688, 32, 32, 32, 32, 32, 32, 32, 32, 64, 64, 64, 64, 64, 64, 64, 64, 64, 64, 64

32, 1688, 32, 32, 32, 32, 32, 32, 32, 32, 64, 64, 64, 64, 64, 64, 64, 64, 64, 64, 64

32, 1688, 32, 32, 32, 32, 32, 32, 32, 32, 64, 64, 64, 64, 64, 64, 64, 64, 64, 64, 64

32, 1688, 32, 32, 32, 32, 32, 32, 32, 32, 64, 64, 64, 64, 64, 64, 64, 64, 64, 64, 64

32, 1688, 32, 32, 32, 32, 32, 32, 32, 32, 64, 64, 64, 64, 64, 64, 64, 64, 64, 64, 64

32, 1688, 32, 32, 32, 32, 32, 32, 32, 32, 64, 64, 64, 64, 64, 64, 64, 64, 64, 64, 64

32, 1688, 32, 32, 32, 32, 32, 32, 32, 32, 64, 64, 64, 64, 64, 64, 64, 64, 64, 64, 64

32, 1688, 32, 32, 32, 32, 32, 32, 32, 32, 64, 64, 64, 64, 64, 64, 64, 64, 64, 64, 64

32, 1688, 32, 32, 32, 32, 32, 32, 32, 32, 64, 64, 64, 64, 64, 64, 64, 64, 64, 64, 64

32, 1688, 32, 32, 32, 32, 32, 32, 32, 32, 64, 64, 64, 64, 64, 64, 64, 64, 64, 64, 64

32, 1688, 32, 32, 32, 32, 32, 32, 32, 32, 64, 64, 64, 64, 64, 64, 64, 64, 64, 64, 64

32, 1688, 32, 32, 32, 32, 32, 32, 32, 32, 64, 64, 64, 64, 64, 64, 64, 64, 64, 64, 64

32, 1688, 32, 32, 32, 32, 32, 32, 32, 32, 64, 64, 64, 64, 64, 64, 64, 64, 64, 64, 64

32, 1688, 32, 32, 32, 32, 32, 32, 32, 32, 64, 64, 64, 64, 64, 64, 64, 64, 64, 64, 64

32, 1688, 32, 32, 32, 32, 32, 32, 32, 32, 64, 64, 64, 64, 64, 64, 64, 64, 64, 64, 64

2552 04

2556

1212

1212

132

80

Village of Sylvan

Land & Allen's Beach, Sylvan Shady, North Sylvan, Park, Sylvan























Assessment Roll and Tax List of Real Property in the Town of Sylvan, Cass County, Minnesota, for Taxes for the Year 1957.

Cass County, Minnesota, for Taxes for the Year 1957.

Table with columns: IN WHOSE NAME ASSESSED, TO WHOM TRANSFERRED, DESCRIPTION OF PROPERTY, TRUE AND FULL VALUATIONS, ASSESSED VALUATIONS, VALUATIONS BY SCHOOL DISTRICTS AS EQUALIZED BY DEPARTMENT OF TAXATION, SOLD FOR TAXES, PAID, WHEN PAID, Number of Receipt, March Settlement 1958, June Settlement 1958, November Settlement 1958, Collections to First Monday in January 1959, Delinquent on First Monday in January 1959, Total Delinquent Tax and Penalty, REMARKS.

133-29 (Cal) 133-29 133-30 Village of Sylvan prth Sylvan Earl Papp's Sylvan

an Beach Add'n to Sylvan Beach Sylvan Shady Shores Land & Allen's 2nd Addition to Sylvan







Assessment Roll and Tax List of Real Property in the Town of Sylvan

\* Indicate Type of Property: R-Residential, C-Commercial, I-Industrial, U-Utility, F-Farm, L-Lakeshore, T-Timber, M-Mineral

IN WHOSE NAME ASSESSED	TO WHOM TRANSFERRED	DESCRIPTION OF PROPERTY				TRUE AND FULL VALUATIONS				ASSESSED VALUATIONS						FINAL EQUALIZED VALUE			
		SUBDIVISION	Sec. or Lot	Town or Block	Rng.	Number of Acres of Land	LAND Exclusive of Structures and Improvements	BUILDINGS and Other Structures	MACHINERY Permanently Attached to Real Estate	TOTAL True and Full Value	RURAL			ALL OTHER			Total Assessed Value as Equalized by the Board of Review		
											Acres	100ths	Homestead Up to \$4,000 20%	Over \$4,000 and Non-Homestead 33 1/3%	Timber Land Class 3e 20%			Homestead Up to \$1,000 25%	Over \$1,000 and Non-Homestead 40%
Chas. R. & Mabel M. Woodhouse		Carlyon's Sylvan Park	49																
"	"		50																
"	"		51																
"	"		52																
Elmer P. Carrier			53																
Len & Mary Michaud			54																
Geo. M. & Service V. Wilder			55																
State of Minnesota			56																
State of Minnesota			57																
State of Minnesota			58																
Charles M. & Della D. Luttrell			59																
State of Minnesota			60																
State of Minnesota			61																
State of Minnesota			62																
State of Minnesota			63																
State of Minnesota			64																
State of Minnesota			65																
Orville Leon Roy Bertelait			66																
"	"		67																
"	"		68																

Cass County, Minnesota, for Taxes for the Year 1957.

SOLD FOR TAXES	VALUATIONS BY SCHOOL DISTRICTS AS EQUALIZED BY DEPARTMENT OF TAXATION						Tax Including State Homestead	State Tax on Non-Homestead	SPECIAL TAXES	TOTAL TAXES	PAID	WHEN PAID	Number of Receipt	March Settlement 1958	June Settlement 1958	Penalty	November Settlement 1958	Penalty	Collections to First Monday in January 1959	Penalty	Delinquent on First Monday in January 1959	Total Delinquent Tax and Penalty	REMARKS
	District No.	District No.	District No.	District No.	District No.	District No.																	
	Rate	Rate	Rate	Rate	Rate	Rate																	
1																							
2																							
3																							
4																							
5																							
6																							
7																							
8																							
9																							
10																							
11																							
12																							
13																							
14																							
15																							
16																							
17																							
18																							
19																							
20																							

Land & Allen's 2nd Addition to Sylvan Beach  
Sylvan Shady Shores  
Land & Allen's 2nd Addition to Sylvan



Assessment Roll and Tax List of Real Property in the Town of Sylvan

Form 5C (56) BILLS-BAYNE COMPANY, MINNEAPOLIS

\* Indicate Type of Property: R-Residential, C-Commercial, I-Industrial, U-Utility, F-Farm, L-Lakeshore, T-Timber, M-Mineral

IN WHOSE NAME ASSESSED	TO WHOM TRANSFERRED	DESCRIPTION OF PROPERTY					TRUE AND FULL VALUATIONS											FINAL EQUALIZED VALUE						
		SUBDIVISION	Sec. or Lot	Town or Block	Rng.	Number of Acres of Land	LAND				BUILDINGS				MACHINERY	TOTAL	RURAL			ALL OTHER				
							Exclusive of Structures and Improvements	Buildings and Other Structures	Machinery Permanently Attached to Real Estate	TOTAL True and Full Value	Homestead Up to \$4,000 20%	Over \$4,000 and Non-Homestead 33 1/3%	Timber Land Class 3e 20%	Homestead Up to \$1,000 25%			Over \$1,000 and Non-Homestead 40%		Machinery Permanently Attached to Real Estate 33 1/3%	TOTAL ASSESSED VALUE	Total Assessed Value as Equalized by the Board of Review			
						Dollars	Dollars	Dollars	Dollars	Dollars	Dollars	Dollars	Dollars	Dollars	Dollars	Dollars	Dollars	Dollars	Dollars	Dollars	Dollars	Dollars	Dollars	Dollars
		<i>Carlson's Sylvan Park</i>																						
<i>Dell Leon Roy Bentubeit</i>			1	69																				
			2	70																				
			3	71																				
State of Minnesota			4	72																				
State of Minnesota			5	73																				
State of Minnesota			6	74																				
State of Minnesota			7	75																				
State of Minnesota			8	76																				
State of Minnesota			9	77																				
State of Minnesota			10	78																				
State of Minnesota			11	79																				
<i>Ruth Bremner</i>			12	80																				
			13																					
			14																					
			15																					
			16																					
			17																					
			18																					
			19																					
			20																					

Cass County, Minnesota, for Taxes for the Year 1957.

SOLD FOR TAXES	VALUATIONS BY SCHOOL DISTRICTS AS EQUALIZED BY DEPARTMENT OF TAXATION						Tax Including State Homestead	State Tax on Non-Homestead	SPECIAL TAXES	TOTAL TAXES	PAID	WHEN PAID	Number of Receipt	March Settlement 1958	June Settlement 1958	Penalty	November Settlement 1958	Penalty	Collections to First Monday in January 1959	Penalty	Delinquent on First Monday in January 1959	Total Delinquent Tax and Penalty	REMARKS
	District No.	District Rate	District No.	District Rate	District No.	District Rate																	
	Dollars	Mills	Dollars	Mills	Dollars	Mills																	
1																							
2																							
3																							
4																							
5																							
6																							
7																							
8																							
9																							
10																							
11																							
12																							
13																							
14																							
15																							
16																							
17																							
18																							
19																							
20																							

#2

District No. 116  
 Rate 92 Mills  
 District No. 116  
 Rate 92 Mills

Tax Including State Homestead  
 661 Mills

TOTAL TAXES  
 \$ cts.

PAID  
 \$ cts.

WHEN PAID  
 Month Day Year

March Settlement 1958  
 \$ cts.

June Settlement 1958  
 \$ cts.

Penalty  
 \$ cts.

November Settlement 1958  
 \$ cts.

Penalty  
 \$ cts.

Collections to First Monday in January 1959  
 \$ cts.

Penalty  
 \$ cts.

Delinquent on First Monday in January 1959  
 \$ cts.

Total Delinquent Tax and Penalty  
 \$ cts.

1 PAID IN FULL MAY 31 1958  
 2 PAID IN FULL MAY 31 1958  
 3 PAID IN FULL MAY 31 1958

12 PAID IN FULL JUL 21 1958

#165

5256

5256

5256 1.05

5358.95 penalty due

#165/9

5544

06

5550

294

5256



















Assessment Roll and Tax List of Real Property in the Town of Sylvan

Cass County, Minnesota, for Taxes for the Year 1957.

Table with columns: IN WHOSE NAME ASSESSED, TO WHOM TRANSFERRED, SUBDIVISION, DESCRIPTION OF PROPERTY, TRUE AND FULL VALUATIONS, ASSESSED VALUATIONS, VALUATIONS BY SCHOOL DISTRICTS AS EQUALIZED BY DEPARTMENT OF TAXATION, SOLD FOR TAXES, PAID, WHEN PAID, Number of Receipt, March Settlement 1958, June Settlement 1958, Penalty, November Settlement 1958, Collections to First Monday in January 1959, Delinquent on First Monday in January 1959, Total Delinquent Tax and Penalty, REMARKS.

132-29 (Cal) Sylvan Beach, 133-29 (Cal) Sylvan Beach, 133-30 (Cal) Sylvan Beach, Sylvan Shady Shores, Land & Allen's 2nd Addition to Sylvan B.

Land & Allen's 3rd Addition to Sylvan B., Land & Allen's 2nd Addition to Sylvan B.











Assessment Roll and Tax List of Real Property in the Town of Sylvan of Sylvan

\* Indicate Type of Property: R-Residential, C-Commercial, I-Industrial, U-Utility, F-Farm, L-Lakeshore, T-Timber, M-Mineral

Cass County, Minnesota, for Taxes for the Year 1957.

Form 30 (56) WILSON-JONES COMPANY, MINNEAPOLIS

IN WHOSE NAME ASSESSED	TO WHOM TRANSFERRED	DESCRIPTION OF PROPERTY				No. School District	Indicate Homestead Yes or No	Indicate Agricultural Yes or No	Indicate Type of Property	TRUE AND FULL VALUATIONS			ASSESSED VALUATIONS					Total Assessed Value as Equalized by the Board of Review	FINAL EQUALIZED VALUE	
		SUBDIVISION	Sec. or Lot	Town or Block	Rng.					Number of Acres of Land	Machinery Permanently Attached to Real Estate	RURAL		ALL OTHER			Machinery Permanently Attached to Real Estate			TOTAL ASSESSED VALUE
												Land Exclusive of Structures and Improvements	Buildings and Other Structures	Homestead Up to \$1,000 20%	Over \$4,000 and Non-Homestead 33 1/3%	Timber Land Class 3e 20%				
									Dollars	Dollars	Dollars	Dollars	Dollars	Dollars	Dollars	Dollars	Dollars			
John A. McWhirter		Sylvan Shady Shores	15	2				T												
"			16					"												
"			17					"												
"			18					"												
J. D. + Florence Schmitt			19					"												
Elmer E. Erickson			20					"												
"			21					"												

SOLD FOR TAXES	VALUATIONS BY SCHOOL DISTRICTS AS EQUALIZED BY DEPARTMENT OF TAXATION						Tax including State Homestead	State Tax on Non-Homestead	SPECIAL TAXES	TOTAL TAXES	PAID	WHEN PAID	Number of Receipt	March Settlement 1958	June Settlement 1958	Penalty	November Settlement 1958	Penalty	Collections to First Monday in January 1959	Penalty	Delinquent on First Monday in January 1959	Total Delinquent Tax and Penalty	REMARKS
	District No.	District No.	District No.	District No.	District No.	District No.																	
	Rate	Rate	Rate	Rate	Rate	Rate																	
	Dollars	Dollars	Dollars	Dollars	Dollars	Dollars	\$ cts.	\$ cts.	\$ cts.	\$ cts.	Month Day Year		\$ cts.	\$ cts.	\$ cts.	\$ cts.	\$ cts.	\$ cts.	\$ cts.	\$ cts.	\$ cts.		
1							96	02	98	1	Balance Paid OCT 31 1958												
2							96	02	98	2	Balance Paid OCT 31 1958											2163	
3							96	02	98	3	Balance Paid OCT 31 1958	17750											
4							96	02	98	3	Balance Paid OCT 31 1958	11611	290			102							
5							96	02	98	4	Balance Paid OCT 31 1958												
6	OLD FOR TAXES						96	02	98	5	PAID IN FULL MAY 31 1958	11625			95							5395	
7	OLD FOR TAXES						96	02	98	6												95	
8							96	02	98	7												98	
9										8													
10										9													
11										10													
12										11													
13										12													
14										13													
15										14													
16										15													
17										16													
18										17													
19										18													
20										19													
										20													

21 672 14 686 388 102 196

132-29 133-30 134-31 135-32 136-33 137-34 138-35 139-36 140-37 141-38 142-39 143-40 144-41 145-42 146-43 147-44 148-45 149-46 150-47 151-48 152-49 153-50 154-51 155-52 156-53 157-54 158-55 159-56 160-57 161-58 162-59 163-60 164-61 165-62 166-63 167-64 168-65 169-66 170-67 171-68 172-69 173-70 174-71 175-72 176-73 177-74 178-75 179-76 180-77 181-78 182-79 183-80 184-81 185-82 186-83 187-84 188-85 189-86 190-87 191-88 192-89 193-90 194-91 195-92 196-93 197-94 198-95 199-96 200-97

Land & Allen's 3rd Addition to Sylvan B. Land & Allen's 2nd Addition to Sylvan B.



















Assessment Roll and Tax List of Real Property in the Town of Sylvan

Cass County, Minnesota, for Taxes for the Year 1957.

Table with columns for IN WHOSE NAME ASSESSED, TO WHOM TRANSFERRED, DESCRIPTION OF PROPERTY, TRUE AND FULL VALUATIONS, ASSESSED VALUATIONS, VALUATIONS BY SCHOOL DISTRICTS AS EQUALIZED BY DEPARTMENT OF TAXATION, TAXES, PAID, WHEN PAID, Number of Receipt, March Settlement 1958, June Settlement 1958, November Settlement 1958, Collections to First Monday in January 1959, Delinquent on First Monday in January 1959, Total Delinquent Tax and Penalty, REMARKS.

132-29 (Call) 133-29 133-30 Sylvan Shady Shore Add'n to Sylvan B. Sylvan Shady Shore Add'n to Sylvan B. Land & Allen's 3rd Add'n to Sylvan B. Land & Allen's 3rd Add'n to Sylvan B.

Personal