

Assessment & Tax List - 1955

Sylvan

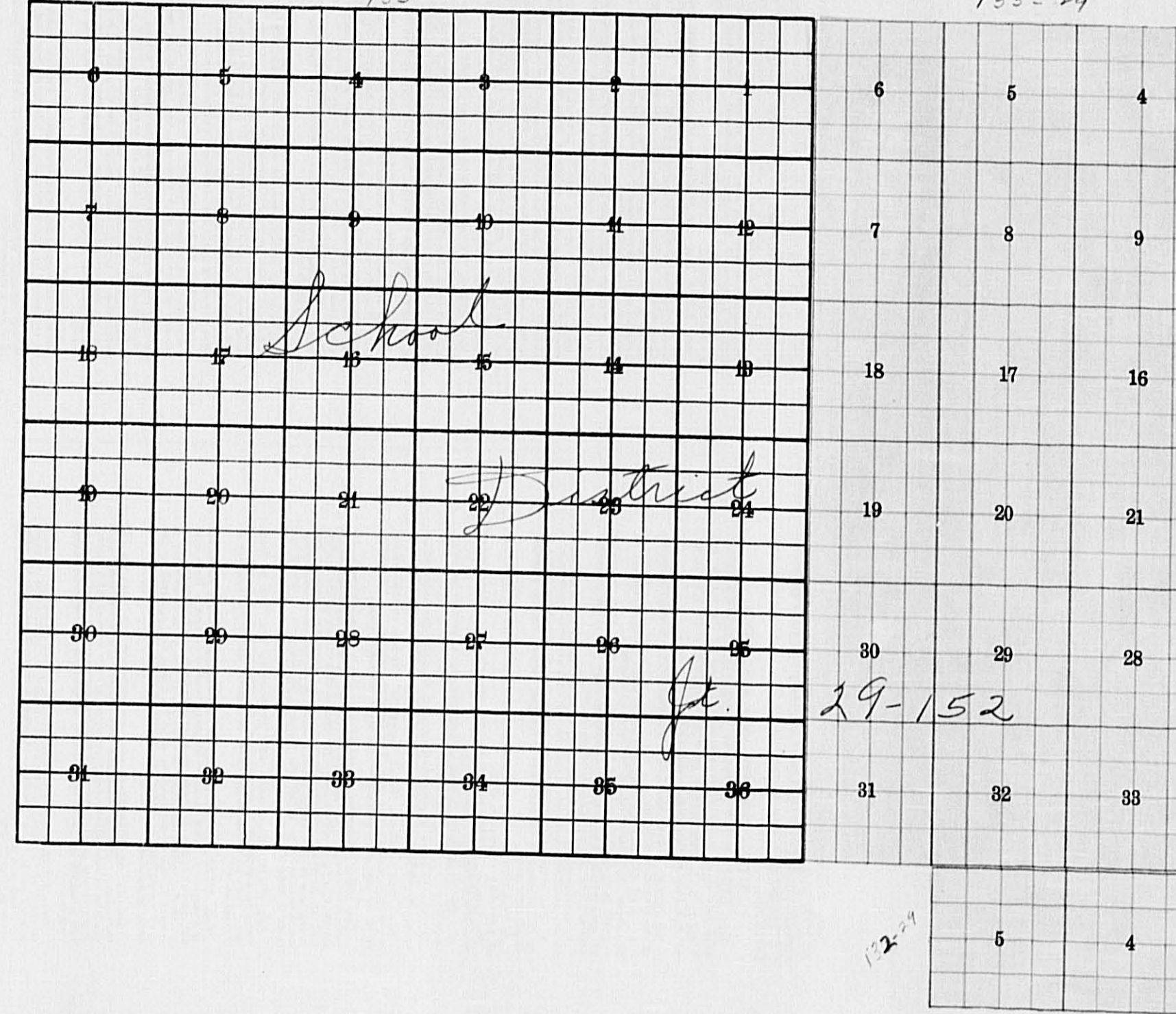
INDEX TO SECTIONS

SECTION PAGE

Sec. 1	
" 2	
" 3	
" 4	
" 5	
" 6	
" 7	
" 8	
" 9	
" 10	
" 11	
" 12	
" 13	
" 14	
" 15	
" 16	
" 17	
" 18	
" 19	
" 20	
" 21	
" 22	
" 23	
" 24	
" 25	
" 26	
" 27	
" 28	
" 29	
" 30	
" 31	
" 32	
" 33	
" 34	
" 35	
" 36	

For Convenience of Auditor in Showing Boundaries of School Districts

Township No. 133-29 Range No. 133-30 Mer. P. M.



Returns Showing Grain Received in or Handled by Elevators, Warehouses and Mills in the _____ of _____ in the
County of _____ for the Year Ending May 1, 1955.

NAMES OF OWNERS	ADDRESS	Bushels of Wheat	Bushels of Soy Beans	Bushels of Flax	Total No. of Bushels of Wheat, Soy Beans and Flax	Tax of 1/4 Mill per Bushel		Bushels of Corn	Bushels of Barley	Bushels of Rye	Bushels of Oats	Bushels of Buckwheat	Bushels of all Other Grains	Total No. Bushels Corn, Barley, Rye, Oats, Buckwheat and all Other Grains	Tax of 1/4 Mill Per Bushel		Total Tax		REMARKS	
						Dollars	Cts.								Dollars	Cts.	Dollars	Cts.		

Note ★ Assessors will not fill these Columns

HOMESTEADS

Sec. or Lot	Town or Block	Range	Number of Acres of Land	
			Acres	100ths

SUMMARY OF TAX COLLECTION

Original Levy	- - - - -	\$ <u>32,445.36</u>
Additions	- - - - -	\$ _____
		\$ <u>32,445.36</u>
Abatements	- - - - -	\$ <u>.84</u>

COLLECTIONS

March Settlement	- - - - -	\$ <u>1,862.59</u>	
June Settlement	- - - - -	\$ <u>16,143.12</u>	
November Settlement	- - - - -	\$ <u>12,091.82</u>	
January Settlement	- - - - -	\$ <u>34.42</u>	\$ <u>30,731.95</u>
			\$ <u>17,122.57</u>
Over Collected	- - - - -	\$ _____	
Under Collected	- - - - -	\$ <u>.46</u>	
Delinquent	- - - - -	\$ <u>1,712.11</u>	\$ <u>1,712.57</u>
Total	- - - - -	\$ _____	\$ _____

133-96

Town

Partly on's Survey Partly on's

Partly on's Survey

133-24 Sec. 4-5-6-7-8-9-16-17-18; all Platted & 1/2 1/4 & 1/2 Sec. 19
 2. } Old #1 Debt - all 133-30
 7/4 Sec 20
 7/4 Sec 21

TABULAR SCHEDULE OF VALUATIONS,
 LEVIED IN THE Town OF Sylvan

School District No.	VALUATION BY SCHOOL DISTRICTS				RATE OF COUNTY TAXES											RATE OF TOWN TAXES											RATE OF STATE TAXES											
	Agri-cultural Lands	Non-Agri-cultural Lands	Personal Property	Total Value of all Property except Money and Credits	Rev.	R. & B.	Wel-fare	Bonds and Int.	Total Rate of County Tax	Rev.	R. & B.	Drag Tax	State Loan	Total Rate of Town Tax	Local	Special	State Loan	Deficiency	Tuition	Transportation	#1 Debt	Total Rate of State Tax	1918	1919	1920	1921	1922	1923	1924	1925	1926	1927	1928	1929	1930			
1. 29-15r	10,464	41,327	5680	59,564	3.98	28.01	14.01	49.83	9.97	2.00			103.82	1.38	13.8	1.					16.18																	
2. 29-15r	37,730	48,078	2093	85,808																																		
				145,372																																		
Assessed Value Homestead	18,476			18,476																																		
Non-Homestead	119,123		7773	126,896																																		
Total	137,599		7773	145,372																																		

RATES AND TAXES
 COUNTY OF CASS, STATE OF MINNESOTA

SCHOOL TAXES			LOCAL 1 MILL AND SPECIAL SCHOOL TAXES BY DISTRICTS										ALL OTHER TAXES		
Total Rate of Sch'l Tax	Total Rate of all Taxes	Total Rate of Town Tax	Local 1 Mill	Special	State Loan	LOCAL 1 MILL AND SPECIAL SCHOOL TAXES BY DISTRICTS					Total School Taxes	FUNDS	Rate	Amounts	
78.38	202.36	16.18	1614	403.60		Def. Transp. C.O. #1 Debt						126535	State - Non-Homestead,		65494
103.38	227.36		4342	217100								448875	State - Homestead,		57858
79.38	203.36		3773	94325								299501	County Revenue,		407177
104.38	228.36		4808	240390								501839	County Road and Bridge,		203656
			14537	592175									County Welfare,		724380
			664641	15699	81117	8581							Bonds and Interest		144936
													Court House Bldg.		29074
															15,09223
													Town Revenue,		20061
													Town Road and Bridge,		200613
													Town Drag,		14537
													Town State Loan,		235211
													School Local 1 Mill,		14537
													School Special,		592175
													School State Loan,		664641
													Deficiency		15699
													Tuition		81117
													Transportation		8581
													C.O.		
													#1 Debt		
															13,76750
															32,44536

Total Taxes Real Estate 30,779.98
 Pers. Prop. 1665.38
 Total 32,445.36

Total Number of Acres 18,120.10
 State of Minnesota, }
 COUNTY OF CASS } ss.
 Auditor of said County and State aforesaid, do hereby certify that the foregoing is a true and correct Schedule, showing the valuation of all the taxable property, in the Town of Sylvan, in said County, the several rates of Taxation and Totals of the several Tax Funds levied thereon for the year A. D. 1935.
 Witness my hand and official seal, this 4th day of January A. D. 1935
 L. C. Peterson, County Auditor.
 By Helen Billen, Deputy

SEAL

or Ceased to be Homesteads

Sec. or Lot	Town or Block	Range	Number of Acres of Land
			Acres 100ths

133-26
 SYLVAN
 Park Lyon's SYLVAN Park Beach
 ADLIN W. SYLVAN

COLLECTIONS OF TAXES OF 1956

Town OF Sylvan

CASS COUNTY, MINNESOTA

FUNDS	MARCH SETTLEMENT 1956	JUNE SETTLEMENT 1956	NOV. SETTLEMENT 1956	Amount Collected from Nov. 19, 24, to First Monday in Jan. 1957	REDUCTIONS	Total Reductions and Collected	BALANCE UNCOLLECTED	ADDITIONS	Total Uncollected to First Monday in January, 1957
State-Non-Homestead,	3914	32898	26631	67					
State-Homestead,	3756	27734	22319	67					
County Revenue,	24321	202221	157075	472					
County Road and Bridge,	12645	101146	79565	236					
County Welfare,	43266	359752	279435	848					
County Bond and Interest, Court House	9657 1737	71479 14437	55909 11216	168 34					
Town Revenue,	1198	9963	7739	23					
Town Road and Bridge,	11986	99630	77387	232					
Town Drag,	868	7220	5608	17					
Town State Loan,									
School Local 1 Mill,	868	7219	5608	18					
School Special, (241.02)	28782	296277	245369	421					
School State Loan,									
Deficiency	39697	330080	256387	770					
Tuition									
Transportation	938	7797	6056	18					
C.O.	4885	40296	31291	65					
#1 Debt	165	4671	3187	18					
TOTALS	186259	1614312	1269182	3442					

	SCHOOL DISTRICT NO.	LOCAL 1 MILL	SPECIAL	STATE LOAN	Deficiency	Transport.	C.O.	#1 Debt	TOTALS	or Ceased to be Homesteads
MARCH SETTLEMENT	School District No. G-29-152	81	2030		3765	88	453	81	6446	
	A-29-152	91	4218		3857	71	471	84	8805	
	(1) G-29-152	528	13203		24145	570	2947		4393	
	(1) A-29-152	175	8731		4982	189	334		18057	
Totals		868	28802		39697	938	4843	165	74695	
JUNE SETTLEMENT	School District No. (1) G-29-152	462	11550		21123	499	2578		36212	
	(1) A-29-152	2086	104318		75388	2253	11842		215687	
	(2) G-29-152	2126	53152		97205	3296	11864	2/26	68864	
	(2) A-29-152	2545	127257		116364	2749	14202	2545	265662	
Totals		7219	296277		330080	7797	40286	4671	686330	
NOVEMBER SETTLEMENT	School District No. G-29-152	1401	35018		64042	1513	7816	1060	110850	
	No-29-152	4207	210351		192345	4543	23475	2127	437048	
Totals		5608	245369		256387	6056	31291	3187	547898	
NOVEMBER to JANUARY	School District No. (2) G-29-152	18	421		770	18	94	18	1339	
	Totals		18	421		770	18	94	18	1339
ADDITIONS	School District No.									
Totals										
REDUCTIONS	School District No.									
Totals										

or Ceased to be Homesteads

HOMESTEADS

Sec. or Lot	Town or Block	Range	Number of Acres of Land
			Acres 10ths

Assessment Roll and Tax List of Real Property in the Town of Sylvan, Cass County, Minnesota, for Taxes for the Year 1955.

FORM SCD (55) MILLER-BAYNE COMPANY, MINNEAPOLIS

Table with columns: IN WHOSE NAME ASSESSED, TO WHOM TRANSFERRED, DESCRIPTION OF PROPERTY, TRUE AND FULL VALUATIONS, ASSESSED VALUATIONS, and FINAL EQUALIZED VALUE.

Adolph & Ethel Staub

5474

Cass County, Minnesota, for Taxes for the Year 1955.

Table with columns: VALUATIONS BY SCHOOL DISTRICTS AS EQUALIZED BY DEPARTMENT OF TAXATION, TAXES, PAID, WHEN PAID, Number of Receipt, March Settlement, June Settlement, November Settlement, Collections to First Monday in January, Delinquent on First Monday in January, Total Delinquent Tax and Penalty, and REMARKS.

#1

5564

5564

2782

2782

#1 275

#1 5564

5564

2782

2782

132-29

Village of Sylvan

133-29

133-30

Sylvan

Carl Lyon's Sylvan Park

Carl Lyon's Sylvan Park

Carl Lyon's Sylvan Park

Carl Lyon's Sylvan Park

Carl Lyon's Sylvan Park

Carl Lyon's Sylvan Park

Assessment Roll and Tax List of Real Property in the Town of Sylvan, Cass County, Minnesota, for Taxes for the Year 1955.

Form SCD (55) WALKER-BAYNE COMPANY, MINNEAPOLIS

133-29 132-29

*Indicate Type of Property: R-Residential, C-Commercial, I-Industrial, U-Utility, F-Farm

Table with columns: IN WHOSE NAME ASSESSED, TO WHOM TRANSFERRED, DESCRIPTION OF PROPERTY, TRUE AND FULL VALUATIONS, ASSESSED VALUATIONS, FINAL EQUALIZED VALUE.

Cass County, Minnesota, for Taxes for the Year 1955.

Table with columns: VALUATIONS BY SCHOOL DISTRICTS AS EQUALIZED BY DEPARTMENT OF TAXATION, TAXES, PAID, WHEN PAID, Number of Receipt, March Settlement, June Settlement, November Settlement, Collections to First Monday in January 1957, Delinquent on First Monday in January 1957, Total Delinquent Tax and Penalty, REMARKS.

VILLAGE OF SYLVAN

133-29

North Sylvan

Partly on Sylvan Parkleach

and Allam's 1st

Assessment Roll and Tax List of Real Property in the Town of Sylvan, Minnesota

Cass County, Minnesota, for Taxes for the Year 1955.

133-29 132-29

Table with columns: IN WHOSE NAME ASSESSED, TO WHOM TRANSFERRED, DESCRIPTION OF PROPERTY, TRUE AND FULL VALUATIONS, ASSESSED VALUATIONS, and FINAL EQUALIZED VALUE.

Table with columns: SOLD FOR TAXES, VALUATIONS BY SCHOOL DISTRICTS AS EQUALIZED BY DEPARTMENT OF TAXATION, Tax including State Homestead, State Tax on Non-Homestead, SPECIAL TAXES, TOTAL TAXES, PAID, WHEN PAID, Number of Receipt, March Settlement 1956, June Settlement 1956, Penalty, November Settlement 1956, Penalty, Collections to First Monday in January 1957, Penalty, Delinquent on First Monday in January 1957, Total Delinquent Tax and Penalty, REMARKS.

Village of Sylvan

North Sylvan

Carlson's Sylvan Park Beach

and Albert's 1st

Assessment Roll and Tax List of Real Property in the Town of Sylvan, Cass County, Minnesota, for Taxes for the Year 1955.

*Indicate Type of Property: R-Residential, C-Commercial, I-Industrial, U-Utility, F-Farm

133-29 132-29

Table with columns: IN WHOSE NAME ASSESSED, TO WHOM TRANSFERRED, SUBDIVISION, TRUE AND FULL VALUATIONS, ASSESSED VALUATIONS, FINAL EQUALIZED VALUE.

Table with columns: VALUATIONS BY SCHOOL DISTRICTS AS EQUALIZED BY DEPARTMENT OF TAXATION, TAXES, PAID, WHEN PAID, Number of Receipt, March Settlement, June Settlement, November Settlement, Collections to First Monday in January, Delinquent on First Monday in January, Total Delinquent Tax and Penalty, REMARKS.

Village of Sylvan

133-30

North Sylvan

Barlyon's Sylvan Park

Land & Allen's 1st

Assessment Roll and Tax List of Real Property in the Town of Sylvan

Cass County, Minnesota, for Taxes for the Year 1955.

Form SCD (55) MILLER-BAYNE COMPANY, MINNEAPOLIS

*Indicate Type of Property: R-Residential, C-Commercial, I-Industrial, U-Utility, F-Farm

133-29 132-29

IN WHOSE NAME ASSESSED	TO WHOM TRANSFERRED	DESCRIPTION OF PROPERTY				No. School District	Indicate Homestead Yes or No	Indicate Agricultural Yes or No	Indicate Type of Property	TRUE AND FULL VALUATIONS				ASSESSED VALUATIONS					FINAL EQUALIZED VALUE			
		SUBDIVISION	Sec. of Lot	Town or Block	Rng					Number of Acres of Land	LAND Exclusive of Structures and Improvements	BUILDINGS and Other Structures	MACHINERY Permanently Attached to Real Estate	TOTAL True and Full Value	RURAL		ALL OTHER			MACHINERY Permanently Attached to Real Estate	TOTAL ASSESSED VALUE	Total Assessed Value as Equalized by the Board of Review
															Acres	100ths	Homestead Up to \$1,000 20%	Over \$1,000 and Non-Homestead 33 1/3%				
Wm. H. Staub & Laura Peterson		NE 1/4 of NE 1/4	8	133	29	40	39	152	No	Yes												
Minnesota Power & Light Co.		NW 1/4 of NE 1/4				40																
"		SW 1/4 of NE 1/4				40																
"		SE 1/4 of NE 1/4				40																
Albert & Sykema		NE 1/4 of NW 1/4				40																
Frank Sater		NW 1/4 of NW 1/4				40																
"		1/2 of NW 1/4 less 17 acs.				63																
"		SE 1/4 of NW 1/4																				
Minnesota Power & Light Co.		NE 1/4 of SW 1/4				40																
George Larson		1/2 of SW 1/4 less 18 acs. No better dec.				62			Yes													
"		SW 1/4 of SW 1/4																				
Minnesota Power & Light Co.		SE 1/4 of SW 1/4				40			No													
"		35 acs. of 1/2 of NW 1/4 + 1/2 of SW 1/4				35																
O. H. McAninch		NE 1/4 of SE 1/4				40			Yes													
Minnesota Power & Light Co.		NW 1/4 of SE 1/4				40			No													
"		SW 1/4 of SE 1/4				40																
O. H. McAninch		SE 1/4 of SE 1/4				40			Yes													
						640																

SOLD FOR TAXES	VALUATIONS BY SCHOOL DISTRICTS AS EQUALIZED BY DEPARTMENT OF TAXATION						Tax including State Homestead	State Tax on Non-Homestead	SPECIAL TAXES	TOTAL TAXES	PAID	WHEN PAID	Number of Receipt	March Settlement 1956	June Settlement 1956	Penalty	November Settlement 1956	Penalty	Collections to First Monday in January 1957	Penalty	Delinquent on First Monday in January 1957	Total Delinquent Tax and Penalty	REMARKS	
	District No.	District No.	District No.	District No.	District No.	District No.																		
	Rate	Rate	Rate	Rate	Rate	Rate																		
1																								
1							406	10		416														
2							2440	62		2502	1	2nd half Paid OCT 31 1956												
3							2440	62		2502	2	1st Half Paid MAY 21 1956												
4							2440	62		2502	3	2nd Half Paid OCT 31 1956												
5																								
6							6060	154		6214	4	1st Half Paid MAY 21 1956												
7							1626	42		1668	5	2nd Half Paid OCT 31 1956												
8							2766	70		2836	6	1st Half Paid MAY 21 1956												
9																								
10																								
11							2440	62		2502	7	PAID IN FULL AUG 31 1956												
12							3314			3314	8	PAID IN FULL AUG 31 1956												
13																								
14							2440	62		2502	9	2nd Half Paid OCT 31 1956												
15							2136	54		2190	10	1st Half Paid MAY 21 1956												
16							772			772	11	2nd Half Paid OCT 31 1956												
17							2440	62		2502	12	1st Half Paid MAY 21 1956												
18							2440	62		2502	13	2nd Half Paid OCT 31 1956												
19							2014			2014	14	1st Half Paid MAY 21 1956												
20																								
							36174	764		36938														

Village of Sylvan

North Sylvan

Carl Lyon's Sylvan Park

Land & Allen's 1st

Assessment Roll and Tax List of Real Property in the Town of Seylwan

*Indicate Type of Property: R-Residential, C-Commercial, I-Industrial, U-Utility, F-Farm

Form 5CD (55) WILSON-DAVIS COMPANY, MINNEAPOLIS

133-29

Table with columns: IN WHOSE NAME ASSESSED, TO WHOM TRANSFERRED, DESCRIPTION OF PROPERTY (Subdivision, Acres, 100ths), TRUE AND FULL VALUATIONS (Land, Buildings, Machinery, Total), ASSESSED VALUATIONS (Rural, All Other, Machinery, Total), FINAL EQUALIZED VALUE.

Cass County, Minnesota, for Taxes for the Year 1955.

Table with columns: SOLD FOR TAXES, VALUATIONS BY SCHOOL DISTRICTS AS EQUALIZED BY DEPARTMENT OF TAXATION (District No., Rate, Mills), Tax including State Homestead, State Tax on Non-Homestead, SPECIAL TAXES, TOTAL TAXES, PAID, WHEN PAID (Month, Day, Year), Number of Receipt, March Settlement 1956, June Settlement 1956, November Settlement 1956, Collections to First Monday in January 1957, Delinquent on First Monday in January 1957, Total Delinquent Tax and Penalty, REMARKS.

Village of Seylwan

North Seylwan

Carlton's Seylwan Parkbeach

Land & Allen's 1st Addn to Seylwan

Assessment Roll and Tax List of Real Property in the Town of Sylvan, Cass County, Minnesota

Cass County, Minnesota, for Taxes for the Year 1955.

133-29 133-29

Table with columns: IN WHOSE NAME ASSESSED, TO WHOM TRANSFERRED, DESCRIPTION OF PROPERTY, TRUE AND FULL VALUATIONS, ASSESSED VALUATIONS, FINAL EQUALIZED VALUE. Includes handwritten entries for property owners like A. B. Birdsall, Lawrence Lapka, Philip F. Holzman, etc.

Table with columns: VALUATIONS BY SCHOOL DISTRICTS AS SOLICITED BY DEPARTMENT OF TAXATION, TAX INCLUDING STATE HOMESTEAD, SPECIAL TAXES, TOTAL TAXES, PAID, WHEN PAID, Number of Receipt, March Settlement, June Settlement, Penalty, November Settlement, Collections to First Monday in January 1957, Delinquent on First Monday in January 1957, Total Delinquent Tax and Penalty, REMARKS. Includes handwritten payment dates and amounts.

Village of Sylvan

133-30

North Sylvan

Carlson's Sp. van Park Beach

and Allen's 1st

Assessment Roll and Tax List of Real Property in the Town of Sylvan of Sylvania

*Indicate Type of Property: R-Residential, C-Commercial, I-Industrial, U-Utility, F-Farm

Form 5CD (55) MILLER-DAY COMPANY, MINNEAPOLIS

133-29 132-29

IN WHOSE NAME ASSESSED	TO WHOM TRANSFERRED	SUBDIVISION	Sec. of Township Range	Number of Acres of Land	No. School District	Indicate Homestead Yes or No	Indicate Agricultural Yes or No	Indicate Type of Property	TRUE AND FULL VALUATIONS				ASSESSED VALUATIONS					FINAL EQUALIZED VALUE		
									LAND Exclusive of Structures and Improvements	BUILDINGS and Other Structures	MACHINERY Permanently Attached to Real Estate	TOTAL True and Full Value	RURAL		ALL OTHER		MACHINERY Permanently Attached to Real Estate		TOTAL ASSESSED VALUE	Total Assessed Value as Equalized by the Board of Review
													Dollars	Dollars	Dollars	Dollars				
1 John A. Miller	Minnesota Power & Light Co	All that part of NE 1/4 of NE 1/4 Sec. 17-133-29 lying above 1186' contour line running across said tract, which is 1186' above the sea level elevation as established by the Mississippi River Commission, being approximately 20 acres in the Northern Pacific Right of way, and a certain one acre tract owned and occupied by school District #1 of Cass County and excepting the south 15 rods of the E 1/2 of NE 1/4 of NE 1/4		12.25	72	Yes	Yes													
2 " "	" "	"		24.40	70	"	"													
3 Homo. Alvin & Emily J. Lindall	"	5 acs. of SE 1/4 of NE 1/4		5	70	Yes	No													
4 Guy A. & Mabel Smith	W. H. & Irl Palmer	6.9 acs. of NW 1/4 of NW 1/4		20	70	No	Yes													
5 W. H. & Irl Palmer	State of Minnesota	NW 1/4 of SW 1/4		40	70	"	"													
6 Minnesota Power & Light Co	"	"		40	70	"	"													
7 J. Cunningham	Minnesota Power & Light Co	2.20 acs. of NW 1/4 of NE 1/4		2.20	70	Yes	"													
8 " "	"	"		40	70	"	"													
9 " "	"	"		40	70	"	"													
10 " "	"	"		40	70	"	"													
11 " "	"	"		40	70	"	"													
12 " "	"	"		40	70	"	"													
13 " "	"	"		40	70	"	"													
14 " "	"	"		40	70	"	"													
15 " "	"	"		40	70	"	"													
16 " "	"	"		40	70	"	"													
17 " "	"	"		40	70	"	"													
18 " "	"	"		40	70	"	"													
19 " "	"	"		40	70	"	"													
20 " "	"	"		40	70	"	"													

Cass County, Minnesota, for Taxes for the Year 1955.

SOLD FOR TAXES	VALUATIONS BY SCHOOL DISTRICTS AS EQUALIZED BY DEPARTMENT OF TAXATION						Tax including State Homestead	State Tax on Non-Homestead	SPECIAL TAXES	TOTAL TAXES	PAID	WHEN PAID	Number of Receipt	March Settlement 1956	June Settlement 1956	Penalty	November Settlement 1956	Penalty	Collections to First Monday in January 1957	Penalty	Delinquent on First Monday in January 1957	Total Delinquent Tax and Penalty	REMARKS
	District No.	District No.	District No.	District No.	District No.	District No.																	
	Rate	Rate	Rate	Rate	Rate	Rate																	
1 # 59						12.00			12.00	1													
2 72						14.64	38		15.02	2	2nd Half Paid	OCT 31 1956	10297	757		757							
3 120						24.40	62		25.02	3	1st Half Paid	OCT 31 1956	10298	1257		1257							
4 105						21.36	54		21.90	4	2nd Half Paid	OCT 31 1956	10215	1095		1095							
5 # 225 300						119.88	156		121.44	5	PAID IN FULL	OCT 31 1956	15159				12144	391				12008/1320	
6 60						12.20	32		12.52	6	2nd Half Paid	OCT 31 1956	10298	626		626							
7 # 82						16.68			16.68	7	PAID IN FULL	MAY 31 1956	8792		1468								
8 69						14.04	36		14.40	8	PAID IN FULL	MAY 31 1956	8794		1440								
9 107						21.76	56		22.32	9	PAID IN FULL	APR 30 1956	5922		2232								
10 20						4.06	10		4.16	10	2nd Half Paid	OCT 31 1956	10299	209		209							
11 93						18.92	48		19.40	11	PAID IN FULL	APR 30 1956	5922		1940								
12										12	2nd Half Paid	OCT 31 1956	10215										
13 120						24.40	62		25.02	13	1st Half Paid	MAY 31 1956	10298	2502		2502							
14 120						24.40	62		25.02	14	2nd Half Paid	OCT 31 1956	10298										
15 # 50						10.16			10.16	15	PAID IN FULL	FEB 29 1956	4635	1016									
16 120						24.40	62		25.02	16	2nd Half Paid	OCT 31 1956	10298	2502		2502							
17 120						24.40	62		25.02	17	1st Half Paid	MAY 31 1956	10298										
18 120						24.40	62		25.02	18	2nd Half Paid	OCT 31 1956	10215	2502		2502							
19 120						24.40	62		25.02	19	1st Half Paid	MAY 31 1956	10298										
20 # 24 # 191 # 1390						4.88	12		5.00	20	2nd Half Paid	OCT 31 1956	10298	250		250							
1581						525 = 2106			44138					1016	18967		23831				1200		

Village of Sylvan, North Sylvan, Sylvan Park, and Allen's 1st

Assessment Roll and Tax List of Real Property in the Town of Sylwan, Cass County, Minnesota, for Taxes for the Year 1955.

Form 5CD (55) MILLER-DAVE COMPANY, MINNEAPOLIS

*Indicate Type of Property: R-Residential, C-Commercial, I-Industrial, U-Utility, F-Farm

Table with columns: IN WHOSE NAME ASSESSED, TO WHOM TRANSFERRED, DESCRIPTION OF PROPERTY (Subdivision, Sec. of Lot, Town, Rng, Acres, 100ths), TRUE AND FULL VALUATIONS (LAND, BUILDINGS, MACHINERY, TOTAL True and Full Value), ASSESSED VALUATIONS (RURAL, ALL OTHER, MACHINERY Permanently Attached to Real Estate, TOTAL ASSESSED VALUE, Total Assessed Value as Equalized by the Board of Review), FINAL EQUALIZED VALUE.

Cass County, Minnesota, for Taxes for the Year 1955.

Table with columns: SOLD FOR TAXES, VALUATIONS BY SCHOOL DISTRICTS AS EQUALIZED BY DEPARTMENT OF TAXATION, Tax including State Homestead, State Tax on Non-Homestead, SPECIAL TAXES, TOTAL TAXES, PAID, WHEN PAID, Number of Receipt, March Settlement 1956, June Settlement 1956, Penalty, November Settlement 1956, Penalty, Collections to First Monday in January 1957, Delinquent on First Monday in January 1957, Total Delinquent Tax and Penalty, REMARKS.

133-29 132-29

Village of Sylwan

North Sylwan

Barlyon's Sylwan Park

and Allen's 1st

Adm. to Sylwan

133-30

133-30

133-30

133-30

133-30

Assessment Roll and Tax List of Real Property in the Town of Sylvan,
*Indicate Type of Property: R-Residential, C-Commercial, I-Industrial, U-Utility, F-Farm

Form 5CD (55) MILLER-DAY COMPANY, MINNEAPOLIS

133-29 192-29

IN WHOSE NAME ASSESSED	TO WHOM TRANSFERRED	DESCRIPTION OF PROPERTY				No. School District	Indicate Homestead Tax or No	Indicate Agricultural Use or No	* Indicate Type of Property	TRUE AND FULL VALUATIONS			ASSESSED VALUATIONS					FINAL EQUALIZED VALUE								
		SUBDIVISION	Sec. or Lot	Town or Block	Rng					Number of Acres of Land	LAND Exclusive of Structures and Improvements	BUILDINGS and Other Structures	MACHINERY Permanently Attached to Real Estate	TOTAL True and Full Value	RURAL		ALL OTHER		MACHINERY Permanently Attached to Real Estate	TOTAL ASSESSED VALUE	Total Assessed Value as Equalized by the Board of Review					
															Acres	100ths	Dollars					Dollars	Dollars	Dollars	Dollars	Dollars
Minnesota Power & Light Co.		1	20	17	133	29	20	29	152	no	yes															
Pray Carmichael	State of Minnesota	2	1/4				25	"	"																	
		3																								
		4																								
Hornell & Emily J Lindall		5	5.15				75	yes	no																	
Harry Sechler		6	20				760	"	yes																	
		7																								
		8																								
		9																								
State of Minnesota		10	1																							
		11																								
		12																								
		13																								
		14																								
Gull River Cemetery Ass'n		15	202																							
		16																								
		17																								
		18																								
		19																								
		20																								
							3160																			

Cass County, Minnesota, for Taxes for the Year 1955.

SOLD FOR TAXES	VALUATIONS BY SCHOOL DISTRICTS AS EQUALIZED BY DEPARTMENT OF TALLION						Tax including State Homestead	State Tax on Non-Homestead	SPECIAL TAXES	TOTAL TAXES	PAID	WHEN PAID	Number of Receipt	March Settlement 1956	June Settlement 1956	Penalty	November Settlement 1956	Penalty	Collections to First Monday in January 1957	Penalty	Delinquent on First Monday in January 1957	Total Delinquent Tax and Penalty	REMARKS
	District No.	Rate	District No.	Rate	District No.	Rate																	
	Dollars	Mills	Dollars	Mills	Dollars	Mills																	
	\$	cts.	\$	cts.	\$	cts.																	
1		60				1220	32		1252	1	2nd Half Paid	OCT 31 1955	16214										
2		4				82	02		84	2	Forfeited	10-1-56										84 & Conc.	
5				# 25		570			570	5	PAID IN FULL	OCT 31 1955	15159										
6		# 77				1566			1566	6	PAID IN FULL	MAY 31 1956	8793		1566								
20		# 77		# 25 =	102 7/242	570			3472					2192		1196						84 & Conc.	
		64		-	64 42	2868	34																
		141		25 =	166	3438																	

Village of Sylvan North Sylvan Berlin's Sylvan Park Beach and Allen's 1st

Assessment Roll and Tax List of Real Property in the Town of Sylvan, Minnesota

*Indicate Type of Property: R-Residential, C-Commercial, I-Industrial, U-Utility, F-Farm

Table with columns: IN WHOSE NAME ASSESSED, TO WHOM TRANSFERRED, DESCRIPTION OF PROPERTY, TRUE AND FULL VALUATIONS, ASSESSED VALUATIONS, FINAL EQUALIZED VALUE.

Cass County, Minnesota, for Taxes for the Year 1955.

Table with columns: VALUATIONS BY SCHOOL DISTRICTS AS EQUALIZED BY DEPARTMENT OF TAXATION, Tax including State Homestead, State Tax on Non-Homestead, SPECIAL TAXES, TOTAL TAXES, PAID, WHEN PAID, Number of Receipt, March Settlement 1956, June Settlement 1956, November Settlement 1956, Collections to First Monday in January 1957, Delinquent on First Monday in January 1957, Total Delinquent Tax and Penalty, REMARKS.

133-29 132-29

Village of Sylvan

133-30

North Sylvan

Carlton's Sylvan Park Beach

Land & Allen's 1st

Assessment Roll and Tax List of Real Property in the Town of Sylvan of Sylvan,
 *Indicate Type of Property: R-Residential, C-Commercial, I-Industrial, U-Utility, F-Farm

Cass County, Minnesota, for Taxes for the Year 1955.

133-29

Form 5CD (55) MILLER-SAYRE COMPANY, MINNEAPOLIS

IN WHOSE NAME ASSESSED	TO WHOM TRANSFERRED	DESCRIPTION OF PROPERTY			No. School District	Indicate Homestead Yes or No	Indicate Agricultural Yes or No	Indicate Type of Property	TRUE AND FULL VALUATIONS				ASSESSED VALUATIONS					FINAL EQUALIZED VALUE						
		SUBDIVISION	Sec. or Lot	Town or Block					Rng	Number of Acres of Land	LAND Exclusive of Structures and Improvements	BUILDINGS and Other Structures	MACHINERY Permanently Attached to Real Estate	TOTAL True and Full Value	RURAL		ALL OTHER		MACHINERY Permanently Attached to Real Estate	TOTAL ASSESSED VALUE	Total Assessed Value as Equalized by the Board of Review			
															Acres	100ths	Homestead Up to \$4,000 20%					Over \$4,000 and Non-Homestead 33 1/3%	Homestead Up to \$4,000 25%	Over \$4,000 and Non-Homestead 40%
															Dollars	Dollars	Dollars					Dollars	Dollars	Dollars
Minnesota Power & Light Co.		1	NE 1/4 of NE 1/4	20	133	29	40	152	No	Yes														
"	"	2	NW 1/4 of NE 1/4				40		"	"														
"	"	3	SW 1/4 of NE 1/4				40		"	"														
"	"	4	SE 1/4 of NE 1/4				40		"	"														
"	"	5							"	"														
"	"	6	NE 1/4 of NW 1/4				40		"	"														
"	"	7	NW 1/4 of NW 1/4				40		"	"														
"	"	8	SW 1/4 of NW 1/4				40		"	"														
"	"	9	SE 1/4 of NW 1/4				40		"	"														
"	"	10							"	"														
"	"	11	NE 1/4 of SW 1/4				40		"	"														
"	"	12	NW 1/4 of SW 1/4				40		"	"														
"	"	13	SW 1/4 of SW 1/4				40		"	"														
"	"	14	SE 1/4 of SW 1/4				40		"	"														
"	"	15							"	"														
State of Minnesota		16	NE 1/4 of SE 1/4																					
State of Minnesota		17	NW 1/4 of SE 1/4																					
Dewey McMaines		18	SW 1/4 of SE 1/4				40		Yes	"														
"		19	SE 1/4 of SE 1/4				40		"	"														
"		20																						

560

SOLD FOR TAXES	VALUATIONS BY SCHOOL DISTRICTS AS EQUALIZED BY DEPARTMENT OF TAXATION						Tax including State Homestead	State Tax on Non-Homestead	SPECIAL TAXES	TOTAL TAXES	PAID	WHEN PAID	Number of Receipt	March Settlement 1956	June Settlement 1956	Penalty	November Settlement 1956	Penalty	Collections to First Monday in January 1957	Penalty	Delinquent on First Monday in January 1957	Total Delinquent Tax and Penalty	REMARKS
	District No.	District No.	District No.	District No.	District No.	District No.																	
	Rate	Rate	Rate	Rate	Rate	Rate																	
	Mills	Mills	Mills	Mills	Mills	Mills																	
							61.1																
1						133			2764	68	2772	1	2nd Half Paid OCT 31 1956										
						133			2764	68	2772	2	1st Half Paid MAY 31 1956										
						133			2692	68	2760	3	2nd Half Paid OCT 31 1956										
						133			2692	68	2760	4	1st Half Paid MAY 31 1956										
												5											
												6	2nd Half Paid OCT 31 1956										
												7	1st Half Paid MAY 31 1956										
												8	2nd Half Paid OCT 31 1956										
												9	1st Half Paid MAY 31 1956										
												10											
												11	2nd Half Paid OCT 31 1956										
												12	1st Half Paid MAY 31 1956										
												13	2nd Half Paid OCT 31 1956										
												14	1st Half Paid MAY 31 1956										
												15											
												16											
												17											
												18	2nd Half Paid OCT 31 1956										
												19	1st Half Paid MAY 31 1956										
												20	2nd Half Paid OCT 31 1956										

158
 1064
 1222

158 #2 10816
 532 1596 #1 24732
 58- 1754 35548

828
 36376

18188
 18188

Village of Sylvan

133-30

North Sylvan

Earlton's Sylvan Park

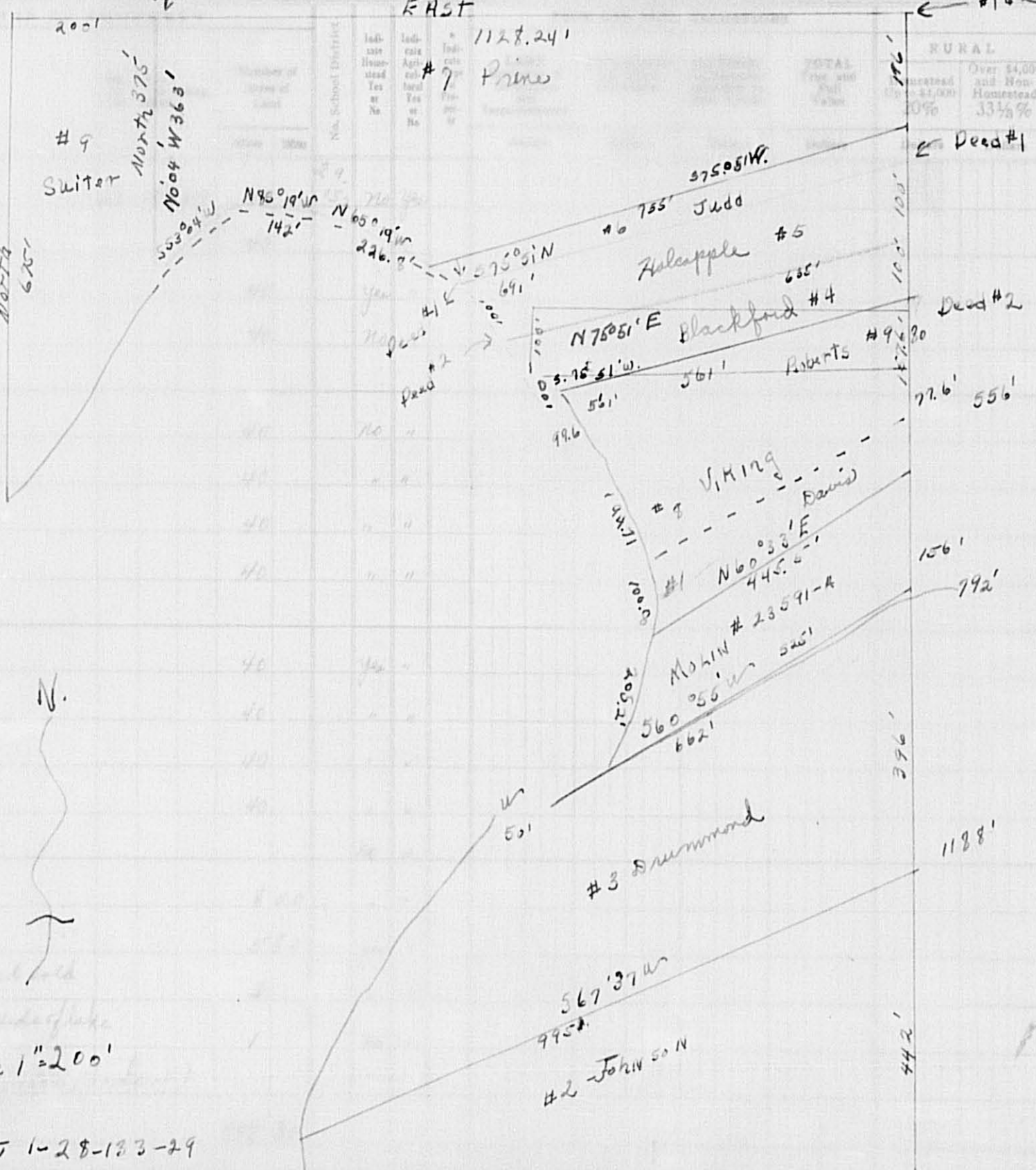
Land & Aiken's 1st

Form SCID (55) MILLER-BATH COMPANY, MINNEAPOLIS

133-29 132-29

Village of Sylva
North Sylva
Earl Lyon's Swan Parkech
Land & Allen's 1st

IN WHOSE NAME ASSESSED	TO WHOM TRANSFERRED	SECTION	PROPERTY
Harold Carlson		1	NE 1/4 of
"		2	NW 1/4 of
Ole Peterson		3	SW 1/4 of
Harold Carlson		4	SE 1/4 of
		5	
Edward J. & Alice O. Peterson		6	NE 1/4 of
"	"	7	NW 1/4 of
"	"	8	SW 1/4 of
"	"	9	SE 1/4 of
		10	
Ole Peterson		11	NE 1/4 of
"	"	12	NW 1/4 of
"	"	13	SW 1/4 of
"	"	14	SE 1/4 of
Donald W. & Helen M. Melin		15	Part of 2.5 ac. of NE 1/4 of S
Georgia H. Johnson & Charles Johnson		16	5.7 ac. of SW 1/4 of S
Arthur C. & Gladys M. Drummond		17	Part of lot 11 SW 1/4 of S
Victor & Mabel Viking & Ste. Nali		18	8.80 ac. of SE 1/4 of S
Grace M. Roberts		19	.73 ac. of S
Hazel Melin		20	



ASSESSED VALUATIONS					Total Assessed Value as Equalized by the Board of Review	FINAL EQUALIZED VALUE
ALL OTHER	Over \$4,000 and Non-Homestead	MACHINERY Permanently Attached to Real Estate	TOTAL ASSESSED VALUE	Dollars		
5%	40%	33 1/8%				

SOLD FOR TAXES	VALUATIONS BY SCHOOL DISTRICTS AS EQUALIZED BY DEPARTMENT OF TAXATION						Tax including State Homestead	State Tax on Non-Homestead	SPECIAL TAXES	TOTAL TAXES	PAID	WHEN PAID	Number of Receipt	March Settlement 1956	June Settlement 1956	Penalty	November Settlement 1956	Penalty	Collections to First Monday in January 1957	Penalty	Delinquent on First Monday in January 1957	Total Delinquent Tax and Penalty	REMARKS
	District No.	District No.	District No.	District No.	District No.	District No.																	
1							1882	48	1930	1											1930		
2							1882	48	1930	2											1930		
3							1254		1254	3											1254	1379	
4							1882	48	1930	4											1930		
5										5													
6							3642	60	3702	6													
7							2712	70	2782	7													
8							2712	70	2782	8													
9							2712	70	2782	9													
10										10													
11							1456		1456	11													1456
12							1538		1538	12													1538
13							972		972	13													972
14							972		972	14													972
15							972	24	996	15													996
16							2286	58	2344	16													2344
17							1680		1680	17													1680
18							1274		1274	18													1274
19							2934	74	3008	19													3008
20							32762	604	33366	20													33366

Lot 1-28-120-29

Assessment Roll and Tax List of Real Property in the Town of Sylvan, *Indicate Type of Property: R-Residential, C-Commercial, I-Industrial, U-Utility, F-Farm

Form SCD (55) MILLER-BAYNE COMPANY, MINNEAPOLIS

133-29

IN WHOSE NAME ASSESSED	TO WHOM TRANSFERRED	DESCRIPTION OF PROPERTY				No. School District	Indicate Homestead Yes or No	Indicate Agricultural Yes or No	Indicate Type of Property	TRUE AND FULL VALUATIONS				ASSESSED VALUATIONS					FINAL EQUALIZED VALUE
		SUBDIVISION	Sec. or Lot	Town or Block	Range					Number of Acres of Land	LAND Exclusive of Structures and Improvements	BUILDINGS and Other Structures	MACHINERY Permanently Attached to Real Estate	TOTAL True and Full Value	RURAL	ALL OTHER	MACHINERY Permanently Attached to Real Estate	TOTAL ASSESSED VALUE	
		Acres	100ths						Dollars	Dollars	Dollars	Dollars	Dollars	Dollars	Dollars	Dollars	Dollars		
Geo. W. & Agnes S. Prine		Part of Lot 1			28	13329	7.52	75											
Ole Peterson		NW 1/4 of NE 1/4 Lot 2					39.95												
G. D. McKisson		SW 1/4 of NE 1/4 Lot 2					32.25												
Richard M. & Georgia Johnson	Charles Johnson	SE 1/4 of NE 1/4 Lot 4					2.50												
Clifford C. & Gladys G. Suter		W. 200' of Lot 1					3									180			
Elizabeth Davis		1 ac. of Lot 1					1												
G. S. & Lorraine Blackford		3,100' of N. 396' of Lot 1 on E. side of NW 1/4 of NW 1/4 Hardy lake					1												
Fred Deuger		3,100' of N. 296' of Lot 1 on E. side of SW 1/4 of NW 1/4 Hardy lake					1												
		SE 1/4 of NW 1/4																	
Harry C. & Cecile B. Judd		Part of Lot 1																	
		NE 1/4 of SW 1/4																	
		NW 1/4 of SW 1/4																	
		SW 1/4 of SW 1/4																	
		SE 1/4 of SW 1/4																	
		NE 1/4 of SE 1/4																	
		NW 1/4 of SE 1/4																	
		SW 1/4 of SE 1/4																	
		SE 1/4 of SE 1/4																	

8822

Cass County, Minnesota, for Taxes for the Year 1955.

Village of Sylvan

133-29

North Sylvan

Carlton's Sylvan Park Beach

Land & Allen's 1st Add'n to Sylvan

SOLD FOR TAXES	VALUATIONS BY SCHOOL DISTRICTS AS EQUALIZED BY DEPARTMENT OF TAXATION						Tax including State Homestead	State Tax on Non-Homestead	SPECIAL TAXES	TOTAL TAXES	PAID	WHEN PAID	Number of Receipt	March Settlement 1956	June Settlement 1956	Penalty	November Settlement 1956	Penalty	Collections to First Monday in January 1957	Penalty	Delinquent on First Monday in January 1957	Total Delinquent Tax and Penalty	REMARKS
	District No.	District Rate	District No.	District Rate	District No.	District Rate																	
1	#1	81								73.86	1.46		75.32	1 PAID IN FULL MAY 31 1956	8801		75.32						
2	#1	57								11.54			11.54	2 PAID IN FULL AUG 6 1956	10746								
3	#1	75								15.18	38		15.56	3 2nd Half Paid AUG 4 1956	13429								
4	#1	11								2.22	06		2.28	4 1st Half Paid MAY 31 1956	11121								
5	#1	120								36.42			36.42	5 PAID IN FULL MAY 31 1956	8802								
6	#1	88								17.80	46		18.26	6 Balance Paid APR 2 1956	5242								
7	#1	107								21.66	56		22.22	7 PAID IN FULL MAY 31 1956	8799								
8	SOLD FOR TAXES	35								7.08	18		7.26								7.26		
9	#1																						
10	#1	55								11.12	28		11.40	10 2nd Half Paid OCT 9 1956	14466								
11	#1																						
12	#1																						
13	#1																						
14	#1																						
15	#1																						
16	#1																						
17	#1																						
18	#1																						
19	#1																						
20	#1																						

318
655
973

#1 196.88 9.38

200.26

167.98

250.2

7.26

Assessment Roll and Tax List of Real Property in the Town of Sylvan of Sylvan

*Indicate Type of Property: R-Residential, C-Commercial, I-Industrial, U-Utility, F-Farm

Cass County, Minnesota, for Taxes for the Year 1955.

133-39

IN WHOSE NAME ASSESSED	TO WHOM TRANSFERRED	DESCRIPTION OF PROPERTY				No. School District	Indicate Homestead Yes or No	Indicate Agricultural Yes or No	Indicate Type of Property	TRUE AND FULL VALUATIONS					ASSESSED VALUATIONS					Final Assessed Value as Equalized by the Board of Review	FINAL EQUALIZED VALUE		
		SUBDIVISION	Sec. or Lot	Town or Block	Ring					Number of Acres of Land	LAND Structures and Improvements	BUILDINGS and Other Structures	MACHINERY Permanently Attached to Real Estate	TOTAL True and Full Value	RURAL		ALL OTHER		MACHINERY Permanently Attached to Real Estate			TOTAL ASSESSED VALUE	Dollars
															Acres 10ths	Homestead Up to \$4,000 20%	Over \$4,000 and Non-Homestead 33 1/3%	Homestead Up to \$1,000 25%					
Adolph & Ethel Staub	Dewey Mc Main	NE 1/4 of NE 1/4	29	133	29	40	29	No	yes														
"	"	NW 1/4 of NE 1/4				40		yes	"														
"	"	SW 1/4 of NE 1/4				40		"	"														
Adolph Staub		SE 1/4 of NE 1/4				40		No	"														
"	"	NE 1/4 of NW 1/4				40		"	"														
"	"	NW 1/4 of NW 1/4				40		"	"														
"	"	SW 1/4 of NW 1/4				40		"	"														
"	"	SE 1/4 of NW 1/4				40		"	"														
Sadie Pierce		NE 1/4 of SW 1/4 Lot 2				33.50		"	"														
"	"	NW 1/4 of SW 1/4 Lot 2				44.85		"	"														
"	"	SW 1/4 of SW 1/4																					
"	"	SE 1/4 of SW 1/4																					
John E. & Vivian L. Eastman	"	NE 1/4 of SE 1/4				40		No	"														
"	"	NW 1/4 of SE 1/4 Lot 5				42.40		"	"														
"	"	SW 1/4 of SE 1/4 Lot 5																					
"	"	SE 1/4 of SE 1/4 Lot 1				22.10		"	"														
						502.85																	

SOLD FOR TAXES	# VALUATIONS BY SCHOOL DISTRICTS AS EQUALIZED BY DEPARTMENT OF TAXATION						Tax including State Homestead	State Tax on Non-Homestead	SPECIAL TAXES	TOTAL TAXES	PAID	WHEN PAID	Number of Receipt	March Settlement 1956	June Settlement 1956	Penalty	November Settlement 1956	Penalty	Collections to First Monday in January 1957	Penalty	Delinquent on First Monday in January 1957	Total Delinquent Tax and Penalty	REMARKS		
	District No.	Rate	District No.	Rate	District No.	Rate																			
	Dollars	Dollars	Dollars	Dollars	Dollars	Dollars																			
1																									
1		52				10.52	26		10.78	1	2nd Half Paid JUL 6 1956	10531													
2		83				16.80			16.80	2	1st Half Paid MAY 31 1956	8777		539		539									
3		60				12.14			12.14	3	2nd Half Paid OCT 31 1956	8798		1447		1447									
4		55				11.12			11.40	4	2nd Half Paid OCT 31 1956	15166													
											Balance Paid JUL 6 1956	10531													
											Part Paid MAY 31 1956	8777		416		724									
6		93				18.82	48		19.30	6	PAID IN FULL APR 10 1956														
7		93				18.82	48		19.30	7	PAID IN FULL APR 10 1956	5320		7720											
8		93				18.82	48		19.30	8	PAID IN FULL APR 10 1956														
9		93				18.82	48		19.30	9	PAID IN FULL APR 10 1956														
11		77				15.58	40		15.98	11	PAID IN FULL OCT 22 1956	14741				1598	131								
12		103				20.84	54		21.38	12	PAID IN FULL OCT 22 1956														
16		93				18.82	48		19.30	16														1930	
17		92				18.62	48		19.10	17														1910	
19		153				30.96	80		31.76	19														3176	
20		143				28.66	516		235.84	20				10122										7016	

Village of Sylvan, North Sylvan, Earlton's Sylvan Parkech, Land & Allen's 1st Addn to Sylvan

133-39

Assessment Roll and Tax List of Real Property in the Town of Sylvan, Cass County, Minnesota

Form 5CD (55) MILLER-BAYE COMPANY, MINNEAPOLIS

*Indicate Type of Property: R-Residential, C-Commercial, I-Industrial, U-Utility, F-Farm

133-29

133-30

133-31

133-32

133-33

133-34

133-35

133-36

133-37

Table with columns: IN WHOSE NAME ASSESSED, TO WHOM TRANSFERRED, SUBDIVISION, TRUE AND FULL VALUATIONS, ASSESSED VALUATIONS, FINAL EQUALIZED VALUE. Includes rows for State of Minnesota, Minnesota Power & Light Co., Guy D. & Hulda E. Dunaway, and Sadie Pierce.

Cass County, Minnesota, for Taxes for the Year 1955.

Table with columns: VALUATIONS BY SCHOOL DISTRICTS AS EQUALIZED BY DEPARTMENT OF TAXATION, TAX INCLUDING STATE HOMESTEAD, SPECIAL TAXES, TOTAL TAXES, PAID, WHEN PAID, Number of Receipt, March Settlement 1956, June Settlement 1956, Penalty, November Settlement 1956, Collections to First Monday in January 1957, Delinquent on First Monday in January 1957, Total Delinquent Tax and Penalty, REMARKS. Includes handwritten notes like 'PAID IN FULL OCT 2 2 1956'.

Village of Sylvan

133-30

North Sylvan

Carlson's Sylvan Parkbench

Land & Allen's 1st Addn to Sylvan

Sec 33-133-29

Indicate Type of Property: R-Residential, C-Commercial, I-Industrial, U-Utility, F-Farm

133-29

FORM-SCD (55) WILCOX-BAYNE COMPANY, MINNEAPOLIS

IN WHOSE NAME ASSESSED	TO WHOM TRANSFERRED	
Michael A. & Olga L. Chamberlain		1
Joseph Kopp	(Tract A)	2
"	(Tract B)	3
Edward & Susan Hopkins	(Tract C)	4
John & Frieda Johnson	(Tract D)	5
John & Frieda Johnson	(Tract E)	6
Merrill & Inez Kaiser	(Tract F)	7
State of Minnesota	(Tract G)	8
Julius & Anna Severson	(Tract H)	9
Conrad & Elsa M. Sundblom	(Tract I)	10
State of Minnesota	(Tract J)	11
Donald H. & Leone Bersell	(Tract K)	12
Hardy Lake Camps in Inc.	(Tract L)	13
Hugo & Hilda Bersell		14
Elvina & Vernon S. Ostlund	(Tract M)	15
Hilding J. & Eunice L. Ostlund	(Tract N)	16
		17
	SW ¼ of SE ¼	18
	SE ¼ of SE ¼	19
		20



ASSESSED VALUATIONS						FINAL EQUALIZED VALUE Dollars
\$4,000 Non-Homestead 4%	Homestead Up to \$4,000 25%	Over \$4,000 and Non-Homestead 40%	MACHINERY Permanently Attached to Real Estate 33 1/3%	TOTAL ASSESSED VALUE Dollars	Total Assessed Value as Equalized by the Board of Review Dollars	

SOLD FOR TAXES	VALUATIONS BY SCHOOL DISTRICTS AS EQUALIZED BY DEPARTMENT OF TAXATION						Tax including State Homestead	State Tax on Non-Homestead 6.11 Mills	SPECIAL TAXES	TOTAL TAXES	PAID	WHEN PAID	Number of Receipt	March Settlement 1956	June Settlement 1956	Penalty	November Settlement 1956	Penalty	Collections to First Monday in January 1957	Penalty	Delinquent on First Monday in January 1957	Total Delinquent Tax and Penalty	REMARKS
	District No.	District No.	District No.	District No.	District No.	District No.																	
	Rate	Rate	Rate	Rate	Rate	Rate																	
1	# 115						2328		2328	1	PAID IN FULL	MAY 31 1956	9816								2328		
2		40					810	20	830	2	PAID IN FULL	MAY 31 1956	8808								1142		
3		15					304	08	312	3	PAID IN FULL	MAY 31 1956											
4		48					992	24	996	4	PAID IN FULL	MAY 31 1956	8812								996		
5		15					304	08	312	5	PAID IN FULL	AUG 31 1956	3647				312	27					
6		41					830	22	852	6	PAID IN FULL	AUG 31 1956					952						
7		58					1194	30	1204	7	PAID IN FULL	MAY 31 1956	8810								1204		
8										8													
9		87					1760	44	1804	9	PAID IN FULL	MAY 31 1956	8820								1804		
10	SOLD FOR TAXES	89					1802	46	1848	10	PAID IN FULL	MAY 31 1956	8819								1848		
11										11													
12		12					242	06	248	12	PAID IN FULL	OCT 9 1956	14485				248	09					
13		9					182	04	186	13											186		
14		# 67					1356		1356	14	PAID IN FULL	MAY 31 1956	8771								1356		
15		92					1862	48	1910	15	PAID IN FULL	MAY 31 1956	8821								1910		
16		12					242	06	248	16											248	273	
17										17													
18										18													
19										19													
20										20													
							# 182																
							518		# 1	14168	266		14434								12588	1412	
							700														434		

2555

Village of Sylvan

133-30

North Sylvan

Caryon's Sylvan Park Beach

Land & Albert's 1st Addn. to Sylvan

Assessment Roll and Tax List of Real Property in the Town of Sylvania of Sylvania, Minnesota. Indicate Type of Property: R-Residential, C-Commercial, I-Industrial, U-Utility, F-Farm

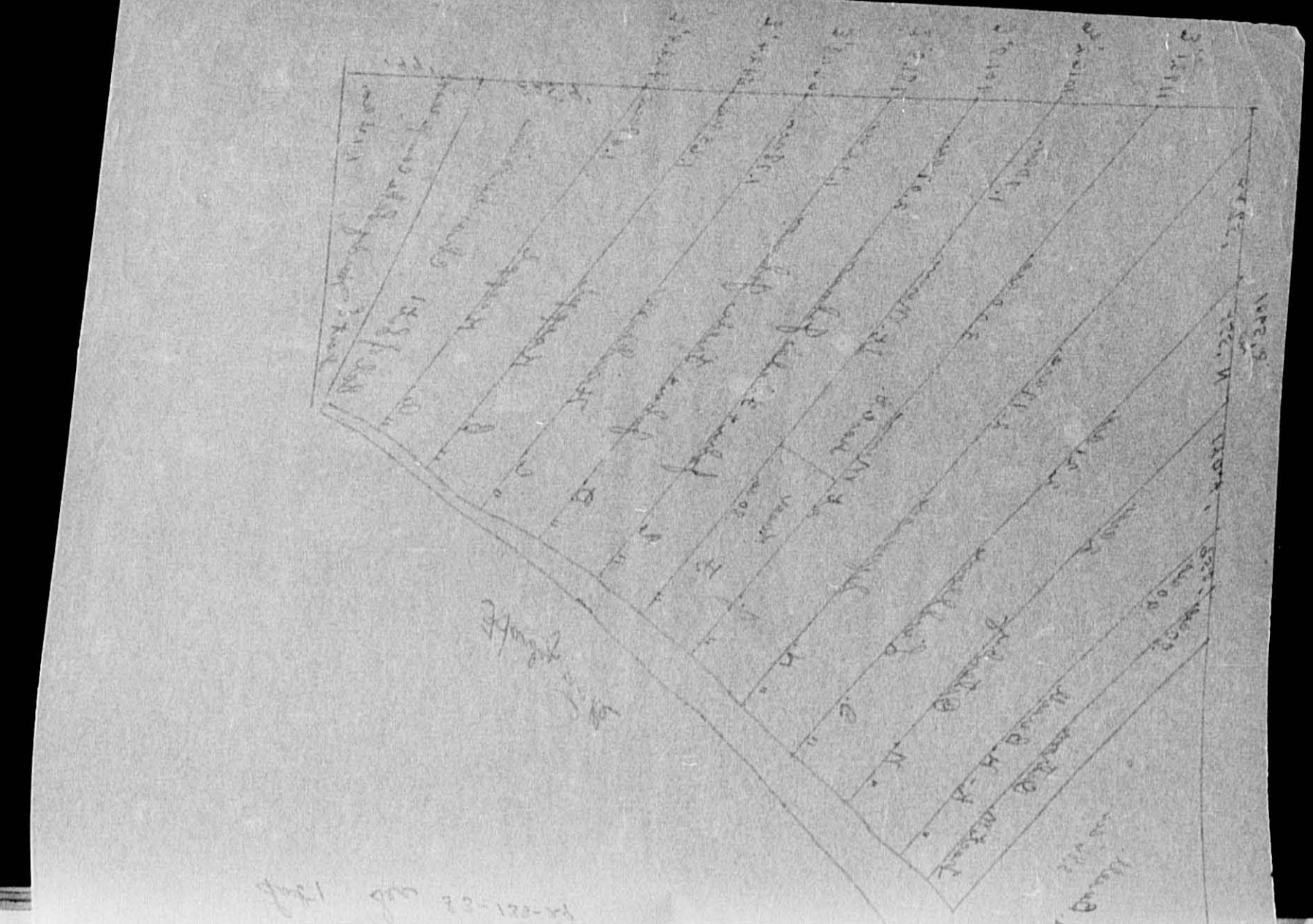


Table with columns: IN WHOSE NAME ASSESSED, TO WHOM TRANSFERRED, SUBDIVISION, TRUE AND FULL VALUATIONS (RURAL, ALL OTHER, MACHINERY), TOTAL ASSESSED VALUE, FINAL EQUALIZED VALUE.

Cass County, Minnesota, for Taxes for the Year 1955.

Table with columns: SOLD FOR TAXES, VALUATIONS BY SCHOOL DISTRICTS AS EQUALIZED BY DEPARTMENT OF TAXATION, SPECIAL TAXES, TOTAL TAXES, PAID, WHEN PAID, Number of Receipt, March Settlement 1956, June Settlement 1956, November Settlement 1956, Collections to First Monday in January 1957, Delinquent on First Monday in January 1957, Total Delinquent Tax and Penalty, REMARKS.

133-29

133-29

Village of Sylvania, North Sylvania, Sylvania Park Beach, Sylvania, and Albert's List

Form SCD (55) MILLER-DAY COMPANY, MINNEAPOLIS

DESCRIPTORS PROPERTY 720'

TRUE N. 1/4

IN WHOSE NAME ASSESSED TO WHOM TRANSFERRED



1 Allison H. & Esther L. Nipon (Tract A)
 2 Walter S. & Wilhelmine H. Horn (Tract B)
 Olaf Bjornstad (" M)
 3 Ralph E. & S. Carmelyte Anderson (" D)
 Olaf Bjornstad (" E)
 Herman Holmquist (" F)
 Olaf Bjornstad (" G)
 " " (" H)
 Harry N. & Alice A. Ostrom (" I)
 4 Ralph E. & Carmelyte Anderson (" J)
 5 Harry N. & Alice A. Ostrom (" K)
 6 Walter S. & Wilhelmine Horn (" L)
 " " (" M)
 7 Olaf Bjornstad (" N)
 8
 9
 10
 11
 12
 13
 14
 15
 16
 17
 18
 19
 20

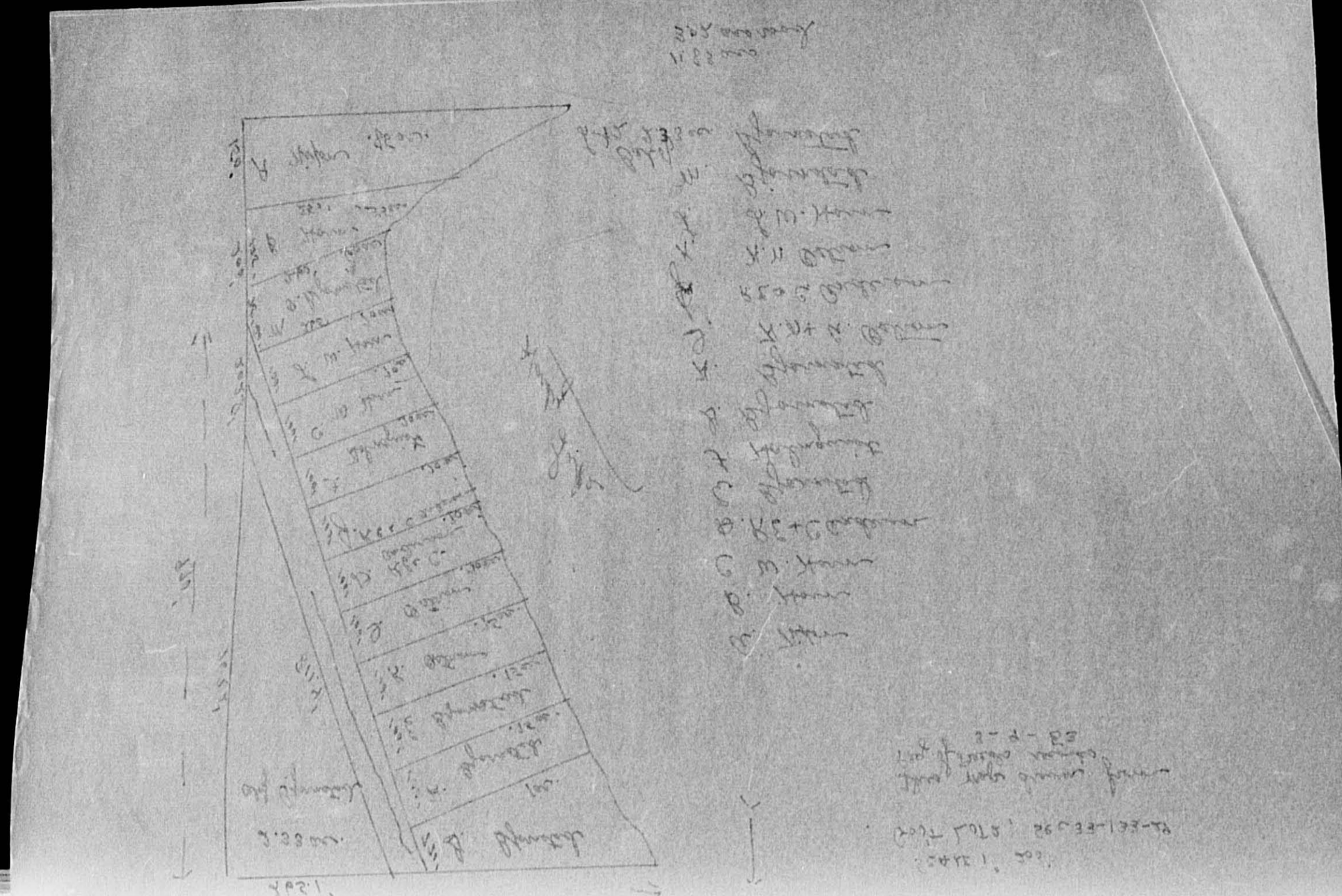
1. 2.33 ac.
 100'
 150'
 200'
 250'
 250'
 250'
 250'
 250'
 250'
 250'
 250'
 250'
 250'
 250'
 250'

11.83 acs
 302' road

SOLD FOR TAXES	VALUATIONS BY SCHOOL DISTRICTS AS EQUALIZED BY DEPARTMENT OF TAXATION						Tax including State Homestead	State Tax on Non-Homestead	SPECIAL TAXES	TOTAL TAXES	PAID	WHEN PAID	Number of Receipt	March Settlement 1956	June Settlement 1956	Penalty	November Settlement 1956	Penalty	Collections to First Monday in January 1957	Penalty	Delinquent on First Monday in January 1957	Total Delinquent Tax and Penalty	REMARKS	
	District No.	District Rate	District No.	District Rate	District No.	District Rate																		
1		98					1984	50	2034	1	PAID IN FULL	MAY 31 1956	8818		2034									
2	# 72						1456		1456	2											1456			
3		10					202	06	208	3	PAID IN FULL	MAY 31 1956	8817		208									
4		73					1478	38	1516	4	PAID IN FULL	MAY 31 1956	8815		1516									
5		18					364	10	374	5	PAID IN FULL	MAY 31 1956	8817		374									
6		43					890	22	892	6	PAID IN FULL	MAY 31 1956	8811		892									
7		8					162	04	166	7	PAID IN FULL	MAY 31 1956	8817		166									
8		6					122	02	124	8	PAID IN FULL	MAY 31 1956	8817		124									
9		4					80	02	82	9	PAID IN FULL	MAY 31 1956	8813		82									
10		4					80	02	82	10	PAID IN FULL	MAY 31 1956	8815		82									
11		6					122	02	124	11	PAID IN FULL	MAY 31 1956	8813		124									
12		60					1214	32	1246	12	PAID IN FULL	MAY 31 1956	8814		1328									
13		4					80	02	82	13	PAID IN FULL	MAY 31 1956												
14		9					182	04	186	14	PAID IN FULL	MAY 31 1956	8817		186									
15										15														
16										16														
17										17														
18										18														
19										19														
20										20														
						# 72				# 1	8396	176		8572		7116					1456			
						343																		
						415																		

133-29 132-29

Village of Sylvan, North Sylvan, Carleton's Sylvan Parish, Land & Allen's 1st Addn to Sylvan



* Indicate Type of Property: R-Residential, C-Commercial, I-Industrial, U-Utility, F-Farm

Cass County, Minnesota, for Taxes for the Year 1955.

IN WHOSE NAME ASSESSED	TO WHOM TRANSFERRED	DESCRIPTION OF PROPERTY	No. School District	Indicate Attached Tax	Indicate Type of Property	TRUE AND FULL VALUATIONS					ASSESSED VALUATIONS					FINAL EQUALIZED VALUE		
						LAND	BUILDINGS	MACHINERY	TOTAL	RURAL		ALL OTHER		MACHINERY	TOTAL		ASSESSED	VALUE
										Exclusive of Structures and Improvements	and Other Structures	Permanently Attached to Real Estate	True and Full Value					
Albion H. & Esther L. Nison (Part A)		.85 acs of Lot 2 N.E. 1/4 of N.W. 1/4	33	13329	85	152	Yes											
Walter L. & Wilhelmine N. Horn (Part B)		.55 acs of Lot 2 N.W. 1/4 of N.W. 1/4			55		Yes											
Olaf Sjornstad (U. M)		.65 acs of Lot 2 S.W. 1/4 of N.W. 1/4			65		No											
Ralph E. & Carmelyte Anderson (U. D)		.70 acs of Lot 2 S.E. 1/4 of N.W. 1/4			70		"											
Olaf Sjornstad (U. E)		.75 acs of Lot 2 N.W. 1/4 of N.W. 1/4			75		"											
Herman Holmquist (U. F)		.70 acs of Lot 2 N.E. 1/4 of N.W. 1/4			70		"											
Olaf Sjornstad (U. D)		1 acs of Lot 2 N.W. 1/4 of N.W. 1/4			1		"											
" " (U. N)		.75 acs of Lot 2 S.W. 1/4 of N.W. 1/4			75		"											
Harry W. & Alice A. Peterson (U. S)		.70 acs of Lot 2 S.E. 1/4 of N.W. 1/4			70		"											
Ralph E. & Carmelyte Anderson (U. D)		.70 acs of Lot 2 N.E. 1/4 of N.W. 1/4			70		"											
Harry W. & Alice A. Peterson (U. K)		.70 acs of Lot 2 N.W. 1/4 of S.W. 1/4			70		"											
Walter L. & Wilhelmine Horn (U. C)		.70 acs of Lot 2 N.W. 1/4 of S.W. 1/4			70		"											
" " (U. L)		.70 acs of Lot 2 S.W. 1/4 of S.W. 1/4			70		"											
Olaf Sjornstad		2.33 acs of Lot 2 S.E. 1/4 of S.W. 1/4			233		"											

SOLD FOR TAXES	VALUATIONS BY SCHOOL DISTRICTS AS EQUALIZED BY DEPARTMENT OF TAXATION						Tax including State Homestead	State Tax on Non-Homestead	SPECIAL TAXES	TOTAL TAXES	PAID	WHEN PAID	Number of Receipt	March Settlement 1956	June Settlement 1956	Penalty	November Settlement 1956	Penalty	Collections to First Monday in January 1957	Penalty	Delinquent on First Monday in January 1957	Total Delinquent Tax and Penalty	REMARKS
	District No.	District No.	District No.	District No.	District No.	District No.																	
	Rate	Rate	Rate	Rate	Rate	Rate																	
							\$ cts.	\$ cts.	\$ cts.	\$ cts.	Month Day Year		\$ cts.	\$ cts.	\$ cts.	\$ cts.	\$ cts.	\$ cts.	\$ cts.	\$ cts.	\$ cts.		
1						98	1984	50	2034		PAID IN FULL	MAY 31 1956	8818										
2						72	1456		1456													1456	
3						10	202	06	208		PAID IN FULL	MAY 31 1956	8917									208	
4						73	1478	38	1516		PAID IN FULL	MAY 31 1956	8815									1516	
5						18	364	10	374		PAID IN FULL	MAY 31 1956	8817									374	
6						43	870	22	892		PAID IN FULL	MAY 31 1956	8811									892	
7						8	162	04	166		PAID IN FULL	MAY 31 1956	8817									166	
8						6	122	02	124		PAID IN FULL	MAY 31 1956	8817									124	
9						4	80	02	82		PAID IN FULL	MAY 31 1956	8813									82	
10						4	80	02	82		PAID IN FULL	MAY 31 1956	8816									82	
11						6	122	02	124		PAID IN FULL	MAY 31 1956	8813									124	
12						60	1214	32	1246		PAID IN FULL	MAY 31 1956	8814									1246	
13						4	80	02	82		PAID IN FULL	MAY 31 1956											
14						9	182	04	186		PAID IN FULL	MAY 31 1956	8817									186	

11 83

72 343 415

#1 8396 176

8572

7116

1456

Assessment Roll and Tax List of Real Property in the Town of Sylvan, Cass County, Minnesota, for Taxes for the Year 1955.

Form 5CD (55) MILLER-BAYNE COMPANY, MINNEAPOLIS

*Indicate Type of Property: R-Residential, C-Commercial, I-Industrial, U-Utility, F-Farm

133-29 132-29
133-30

Table with columns: IN WHOSE NAME ASSESSED, TO WHOM TRANSFERRED, DESCRIPTION OF PROPERTY, TRUE AND FULL VALUATIONS, ASSESSED VALUATIONS, FINAL EQUALIZED VALUE. Includes handwritten entries for State of Minnesota and Wm. P. Robertson.

119 25

Cass County, Minnesota, for Taxes for the Year 1955.

Table with columns: VALUATIONS BY SCHOOL DISTRICTS AS EQUALIZED BY DEPARTMENT OF TAXATION, SOLD FOR TAXES, SPECIAL TAXES, TOTAL TAXES, PAID, WHEN PAID, Number of Receipt, March Settlement, June Settlement, Penalty, November Settlement, Penalty, Collections to First Monday in January 1957, Delinquent on First Monday in January 1957, Total Delinquent Tax and Penalty, REMARKS. Includes handwritten tax amounts and dates.

567

#2

11530 294

11824

2606

9218

Village of Sylvan
North Sylvan
Carlton's Sylvan Park
Land & Allen's 1st Addn to Sylvan

Assessment Roll and Tax List of Real Property in the Town of Sylvan, Cass County, Minnesota

*Indicate Type of Property: R-Residential, C-Commercial, I-Industrial, U-Utility, F-Farm

Form SCD (55) - BILLER-DAY COMPANY, MINNEAPOLIS

Table with columns: IN WHOSE NAME ASSESSED, TO WHOM TRANSFERRED, DESCRIPTION OF PROPERTY, TRUE AND FULL VALUATIONS, ASSESSED VALUATIONS, FINAL EQUALIZED VALUE.

Cass County, Minnesota, for Taxes for the Year 1955.

Table with columns: SOLD FOR TAXES, VALUATIONS BY SCHOOL DISTRICTS AS EQUALIZED BY DEPARTMENT OF TAXATION, SPECIAL TAXES, TOTAL TAXES, PAID, WHEN PAID, Number of Receipt, March Settlement 1956, June Settlement 1956, November Settlement 1956, Collections to First Monday in January 1957, Delinquent on First Monday in January 1957, Total Delinquent Tax and Penalty, REMARKS.

133-29 132-29

133-30

3

4

5

6

7

Village of Sylvan

North Sylvan

Parlyon's Sylvan Parish

Land & Allen's 1st Addn. to Sylvan

Assessment Roll and Tax List of Real Property in the Town of Sylvan

Indicate Type of Property: R-Residential, C-Commercial, I-Industrial, U-Utility, F-Farm

Form 5CD (55) HILLS-DAY COMPANY, MINNEAPOLIS

Table with columns: IN WHOSE NAME ASSESSED, TO WHOM TRANSFERRED, DESCRIPTION OF PROPERTY, TRUE AND FULL VALUATIONS, ASSESSED VALUATIONS, FINAL EQUALIZED VALUE.

Cass County, Minnesota, for Taxes for the Year 1955.

Table with columns: VALUATIONS BY SCHOOL DISTRICTS AS EQUALIZED BY DEPARTMENT OF TAXATION, Tax including State Homestead, SPECIAL TAXES, TOTAL TAXES, PAID, WHEN PAID, Number of Receipt, March Settlement, June Settlement, November Settlement, Collections to First Monday in January, Delinquent on First Monday in January, Total Delinquent Tax and Penalty, REMARKS.

133-29 132-29

133-30

7

Village of Sylvan

North Sylvan

Carlton's Sylvan Parkbench

Land & Allent's 1st Addn. to Sylvan

Assessment Roll and Tax List of Real Property in the *Town* of *Sylvan*

*Indicate Type of Property: R-Residential, C-Commercial, I-Industrial, U-Utility, F-Farm

Form SCD (55) HILLS-DAY COMPANY, MINNEAPOLIS

IN WHOSE NAME ASSESSED	TO WHOM TRANSFERRED	DESCRIPTION OF PROPERTY				TRUE AND FULL VALUATIONS			ASSESSED VALUATIONS						FINAL EQUALIZED VALUE Dollars	
		Subdivision	Sec. or Lot	Town or Block	Number of Acres of Land Acres 100ths	LAND Exclusive of Structures and Improvements Dollars	BUILDINGS and Other Structures Dollars	MACHINERY Permanently Attached to Real Estate Dollars	RURAL		ALL OTHER		TOTAL ASSESSED VALUE Dollars	Total Assessed Value as Equalized by the Board of Review Dollars		
									Homestead Up to \$4,000 20%	Over \$4,000 and Non-Homestead 33 1/3%	Homestead Up to \$4,000 25%	Over \$4,000 and Non-Homestead 40%				
<i>Donald B. Farmer</i>	<i>Lot 4 less N 700'</i>	<i>4</i>	<i>133</i>	<i>30</i>	<i>48</i>											
<i>Lyle + Rosalie Dabell</i>	<i>S 170' of N 700' of Lot 4</i>															

Cass County, Minnesota, for Taxes for the Year 1955.

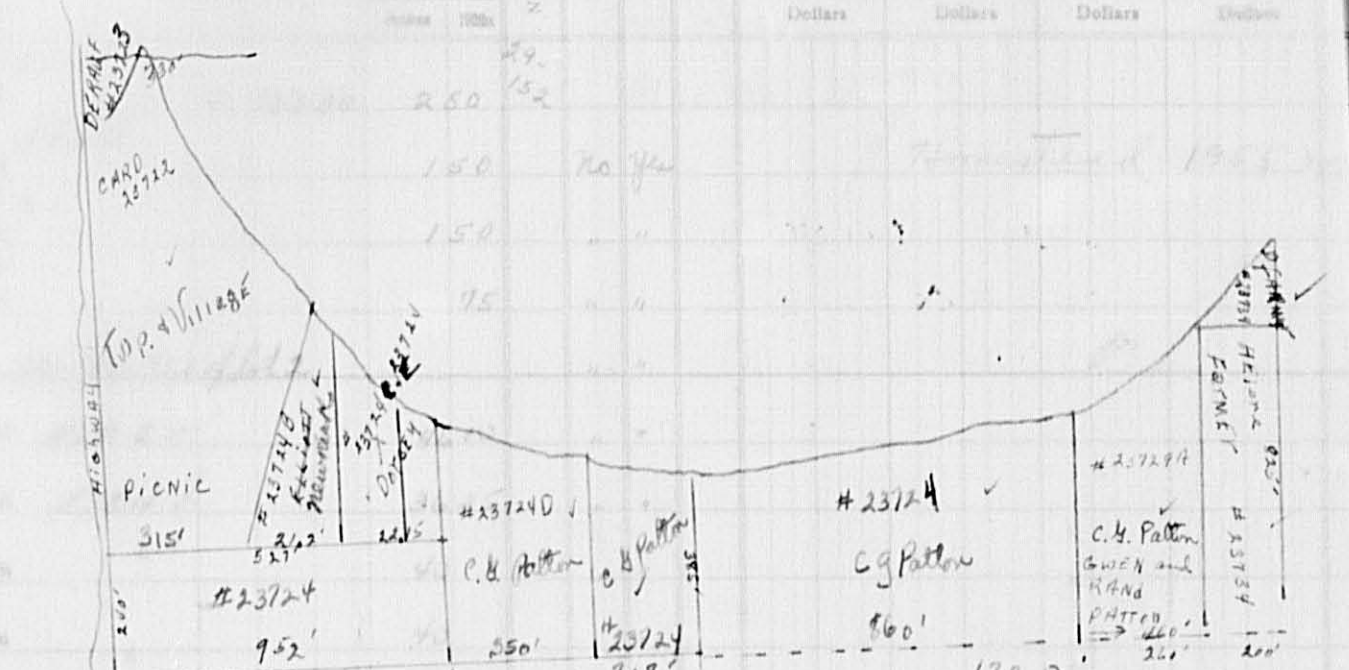
SOLD FOR TAXES	VALUATIONS BY SCHOOL DISTRICTS AS EQUALIZED BY DEPARTMENT OF TAXATION						Tax including State Homestead Mills	State Tax on Non-Homestead Mills	SPECIAL TAXES \$ cts.	TOTAL TAXES \$ cts.	PAID	WHEN PAID Month Day Year	Number of Receipt	March Settlement 1956 \$ cts.	June Settlement 1956 \$ cts.	Penalty 1956 \$ cts.	November Settlement 1956 \$ cts.	Penalty 1956 \$ cts.	Collections to First Monday in January 1957 \$ cts.	Penalty 1957 \$ cts.	Delinquent on First Monday in January 1957 \$ cts.	Total Delinquent Tax and Penalty \$ cts.	REMARKS
	District No.	District No.	District No.	District No.	District No.	District No.																	
	Rate Rate 2.6 2.2 Mills	Rate	Rate	Rate	Rate	Rate																	
	Dollars	Dollars	Dollars	Dollars	Dollars	Dollars																	

Village of Sylvan
 North Sylvan
 Carleton's Sylvan Parishes
 Land & Allen's 1st Addn to Sylvan

Assessment Roll and Tax List

Indicate Type of Property: R-Residential, C-Commercial, I-Industrial, U-Utility, F-Farm

Table with columns: IN WHOSE NAME ASSESSED, TO WHOM TRANSFERRED, TRUCK AND FULL VALUATIONS (LAND, BUILDINGS, MACHINERY, TOTAL), ASSESSED VALUATIONS (RURAL, ALL OTHER, MACHINERY, TOTAL ASSESSED VALUE), FINAL EQUALIZED VALUE.



Cass County, Minnesota, for Taxes for the Year 1955.

Table with columns: SOLD FOR TAXES, VALUATIONS BY SCHOOL DISTRICTS AS EQUALIZED BY DEPARTMENT OF TAXATION, Tax Including State Homestead, State Tax on Non-Homestead, SPECIAL TAXES, TOTAL TAXES, PAID, WHEN PAID, Number of Receipt, March Settlement 1956, June Settlement 1956, November Settlement 1956, Collections to First Monday in January 1957, Delinquent on First Monday in January 1957, Total Delinquent Tax and Penalty, REMARKS.

133-29 132-29

133-30

3

4

5

6

7

8

VILLAGE OF SYLVAN

North Sylvan

Carlson's Sylvan Park

Land & Allen's 1st Addn to Sylvan

Assessment Roll and Tax List of Real Property in the Town of Sylvan

Indicate Type of Property: R-Residential, C-Commercial, I-Industrial, U-Utility, F-Farm

Form SCD (65) MINN. STATE DEPT. OF REVENUE

Table with columns: IN WHOSE NAME ASSESSED, TO WHOM TRANSFERRED, SUBDIVISION, TRUE AND FULL VALUATIONS (LAND, BUILDINGS, MACHINERY, TOTAL), ASSESSED VALUATIONS (RURAL, ALL OTHER, MACHINERY, TOTAL ASSESSED), FINAL EQUALIZED VALUE.

133-29 132-29

133-30

133-31

133-32

Cass County, Minnesota, for Taxes for the Year 1955.

Table with columns: SOLD FOR TAXES, VALUATIONS BY SCHOOL DISTRICTS AS EQUALIZED BY DEPARTMENT OF TAXATION, SPECIAL TAXES, TOTAL TAXES, PAID, WHEN PAID, Number of Receipt, March Settlement, June Settlement, November Settlement, Penalty, Collections to First Monday in January 1957, Delinquent on First Monday in January 1957, Total Delinquent Tax and Penalty, REMARKS.

Village of Sylvan North Sylvan Carleton's Sylvan Parkersburg Land & Albert's List

Assessment Roll and Tax List of Real Property in the Town of Sylvan,
*Indicate Type of Property: R-Residential, C-Commercial, I-Industrial, U-Utility, F-Farm

Form SCD (55) MILLER-BAYNE COMPANY, MINNEAPOLIS

IN WHOSE NAME ASSESSED	TO WHOM TRANSFERRED	DESCRIPTION OF PROPERTY				TRUE AND FULL VALUATIONS				ASSESSED VALUATIONS					FINAL EQUALIZED VALUE			
		SUBDIVISION	Sec. or Lot	Town or Block	Rng	Number of Acres of Land	LAND Exclusive of Structures and Improvements	BUILDINGS and Other Structures	MACHINERY Permanently Attached to Real Estate	TOTAL True and Full Value	RURAL		ALL OTHER			MACHINERY Permanently Attached to Real Estate	TOTAL ASSESSED VALUE	Total Assessed Value as Equalized by the Board of Review
											Acres	100ths	Homestead Up to \$4,000 20%	Over \$4,000 and Non-Homestead 33 1/3%				
Carroll G. & Gwendol S. Patton	✓ 1	E. 350' of W. 1102' of Lot 2 NE 1/4 of NE 1/4	5	133	30													
Edward J. & Agnes D. Horsey	✓ 2	Part of Lot 2 E. of road NW 1/4 of NE 1/4																
Carroll G. & Gwendol S. Patton	✓ 3	W. 260' of E. 460' of Lot 1 SW 1/4 of NE 1/4																
	4	SE 1/4 of NE 1/4																
	5																	
	6	NE 1/4 of NW 1/4																
	7	NW 1/4 of NW 1/4																
	8	SW 1/4 of NW 1/4																
	9	SE 1/4 of NW 1/4																
	10																	
	11	NE 1/4 of SW 1/4																
	12	NW 1/4 of SW 1/4																
	13	SW 1/4 of SW 1/4																
	14	SE 1/4 of SW 1/4																
	15																	
	16	NE 1/4 of SE 1/4																
	17	NW 1/4 of SE 1/4																
	18	SW 1/4 of SE 1/4																
	19	SE 1/4 of SE 1/4																
	20																	

Cass County, Minnesota, for Taxes for the Year 1955.

SOLD FOR TAXES	VALUATIONS BY SCHOOL DISTRICTS AS EQUALIZED BY DEPARTMENT OF TAXATION						Tax including State Homestead Mills	State Tax on Non-Homestead Mills	SPECIAL TAXES	TOTAL TAXES	PAID	WHEN PAID	Number of Receipt	March Settlement 1956	June Settlement 1956	Penalty	November Settlement 1956	Penalty	Collections to First Monday in January 1957	Penalty	Delinquent on First Monday in January 1957	Total Delinquent Tax and Penalty	REMARKS
	District No.	District No.	District No.	District No.	District No.	District No.																	
	Rate	Rate	Rate	Rate	Rate	Rate																	
1							204	06	210	1	PAID IN FULL MAY 31 1956	8772		210									
2							264	06	270	2	PAID IN FULL APR 27 1956	5630		270									
3							406	10	416	3	PAID IN FULL MAY 31 1956	8772		416									
4																							
5																							
6																							
7																							
8																							
9																							
10																							
11																							
12																							
13																							
14																							
15																							
16																							
17																							
18																							
19																							
20																							
							43				H2	874	22	896									

Village of Sylvan

North Sylvan

Carl-Yon's Sylvan Park

Land & Allen's 1st

Assessment Roll and Tax List of Real Property in the Town of Sylvan, of Sylvan,
*Indicate Type of Property: R-Residential, C-Commercial, I-Industrial, U-Utility, F-Farm

Form 5CD (55) MILLER-DAY COMPANY, MINNEAPOLIS

IN WHOSE NAME ASSESSED	TO WHOM TRANSFERRED	DESCRIPTION OF PROPERTY				TRUE AND FULL VALUATIONS										FINAL EQUALIZED VALUE										
		Subdivision	Sec. of Lot	Town or Block	No. of Acres of Land	No. School District	Indicate Homestead Yes or No	Indicate Agricultural Yes or No	Indicate Type of Property	LAND Exclusive of Structures and Improvements		BUILDINGS and Other Structures	MACHINERY Permanently Attached to Real Estate	TOTAL True and Full Value	RURAL		ALL OTHER		MACHINERY Permanently Attached to Real Estate	TOTAL ASSESSED VALUE	Total Assessed Value as Equalized by the Board of Review					
										Dollars	Dollars	Dollars	Dollars	Dollars	Dollars		Dollars	Dollars	Dollars	Dollars	Dollars	Dollars	Dollars	Dollars	Dollars	Dollars
George W & Grace Skelson	Frank A. Collette	NE 1/4 of NE 1/4	6	13330	3776	152	Yes	Yes																		
State of Minnesota (Cont. to George W & Grace P. Wilson's)	Belbert S. Mann	NW 1/4 of NE 1/4			3725		No																			
George W & Grace Skelson	Belbert S. Mann	SW 1/4 of NE 1/4			3950		Yes																			
George W & Grace Skelson	Belbert S. Mann	SE 1/4 of NE 1/4			40																					
Geo. & Ruth E. Hip		NE 1/4 of NW 1/4			61																					
Geo. Hip	George W & Ruth E. Hip	SW 1/4 of NW 1/4			49																					
Belbert S. Mann		SE 1/4 of NW 1/4			3550																					
Geo. Hip	George W & Ruth E. Hip	NE 1/4 of SW 1/4			40																					
Belbert S. Mann		NW 1/4 of SW 1/4			4939																					
H. S. Stuntz		SW 1/4 of SW 1/4			4553																					
" " George W & Ruth E. Hip		SE 1/4 of SW 1/4			40																					
State of Minnesota		NE 1/4 of SE 1/4																								
Jack Barnett		NW 1/4 of SE 1/4			40																					
George W. Wilson		SW 1/4 of SE 1/4			40																					
Arno & Clara S. Passler		SE 1/4 of SE 1/4			40																					

59293

Cass County, Minnesota, for Taxes for the Year 1955.

SOLD FOR TAXES	VALUATIONS BY SCHOOL DISTRICTS AS EQUALIZED BY DEPARTMENT OF TAXATION						Tax including State Homestead	State Tax on Non-Homestead	SPECIAL TAXES	TOTAL TAXES	PAID	WHEN PAID	Number of Receipt	March Settlement 1956	June Settlement 1956	Penalty	November Settlement 1956	Penalty	Collections to First Monday in January 1957	Penalty	Delinquent on First Monday in January 1957	Total Delinquent Tax and Penalty	REMARKS		
	District No.	District Rate	District No.	District Rate	District No.	District Rate																			
	Dollars	Dollars	Dollars	Dollars	Dollars	Dollars																			
1	#2	70	1424						1424			7048													
2		53	1078				28		1106			7047													
3		51	1038						1038			2848													
4		54	1098						1098			549													
6		56	1138						1138			2141	1138												
8		59	1200						1200			2141	1200												
9		24	488						488			2141	488												
11		81	1648						1648			2141	1648												
12		52	1058						1058			2141	1058												
13		36	732						732				732												
14		32	650						650				650												
17		63	1282						1282			2147	641												
18		46	936						936			16584	468												
19		44	894						894			8782	449												
20		68	14664				28		14692			6914	3889												

721

Village of Sylvan

North Sylvan

Carlson's Sylvan Parkeach

Land & Allen's Sylvan

Assessment Roll and Tax List of Real Property in the Town of Sylvan

*Indicate Type of Property: R-Residential, C-Commercial, I-Industrial, U-Utility, F-Farm

Form SCD (55) MILLER-BAYNE COMPANY, MINNEAPOLIS

Table with columns: IN WHOSE NAME ASSESSED, TO WHOM TRANSFERRED, DESCRIPTION OF PROPERTY, TRUE AND FULL VALUATIONS, ASSESSED VALUATIONS, and FINAL EQUALIZED VALUE.

Cass County, Minnesota, for Taxes for the Year 1955.

Table with columns: VALUATIONS BY SCHOOL DISTRICTS AS EQUALIZED BY DEPARTMENT OF TAXATION, Tax including State Homestead, State Tax on Non-Homestead, SPECIAL TAXES, TOTAL TAXES, PAID, WHEN PAID, Number of Receipt, March Settlement, June Settlement, November Settlement, Collections to First Monday in January, Delinquent on First Monday in January, Total Delinquent Tax and Penalty, and REMARKS.

133-29

133-30

3

4

5

6

7

Village of Sylvan

North Sylvan

Carlson's Sylvan Park

Land & Allen's

Assessment Roll and Tax List of Real Property in the Town of Sylvan,
*Indicate Type of Property: R-Residential, C-Commercial, I-Industrial, U-Utility, F-Farm

Form SCD (55) JULY-1954 DOWNEY, MINNAPOLIS

IN WHOSE NAME ASSESSED	TO WHOM TRANSFERRED	DESCRIPTION OF PROPERTY				TRUE AND FULL VALUATIONS				ASSESSED VALUATIONS					FINAL EQUALIZED VALUE			
		SUBDIVISION	Sec. of Lot	Town or Block	Rng	Number of Acres of Land	LAND Exclusive of Structures and Improvements	BUILDINGS and Other Structures	MACHINERY Permanently Attached to Real Estate	TOTAL True and Full Value	RURAL		ALL OTHER			MACHINERY Permanently Attached to Real Estate	TOTAL ASSESSED VALUE	Total Assessed Value as Equalized by the Board of Review
											Acres	100ths	Homestead Up to \$4,000 20%	Over \$4,000 and Non-Homestead 33 1/3%				
Ralph A. & Cora Agnes Cole		NE 1/4 of NE 1/4	8	13330	40													
Amiel Berndt		NW 1/4 of NE 1/4			40											40		
"		SW 1/4 of NE 1/4			40											40		
Wm G. Gerrels		SE 1/4 of NE 1/4			40													
Gilbert & Myrtle Tessmer		NE 1/4 of NW 1/4			40													
"		NW 1/4 of NW 1/4			40													
"		SW 1/4 of NW 1/4			40													
"		SE 1/4 of NW 1/4			40													
O. A. & Erna Berndt		NE 1/4 of SW 1/4			40													
"		NW 1/4 of SW 1/4			40													
"		SW 1/4 of SW 1/4			40													
"		SE 1/4 of SW 1/4			40													
Wm G. Gerrels		NE 1/4 of SE 1/4			40													
"		NW 1/4 of SE 1/4			40													
"		SW 1/4 of SE 1/4			40													
"		SE 1/4 of SE 1/4			40													

Cass County, Minnesota, for Taxes for the Year 1955.

SOLD FOR TAXES	VALUATIONS BY SCHOOL DISTRICTS AS EQUALIZED BY DEPARTMENT OF TAXATION						Tax including State Homestead	State Tax on Non-Homestead	SPECIAL TAXES	TOTAL TAXES	PAID	WHEN PAID	Number of Receipt	March Settlement 1956	June Settlement 1956	Penalty	November Settlement 1956	Penalty	Collections to First Monday in January 1957	Penalty	Delinquent on First Monday in January 1957	Total Delinquent Tax and Penalty	REMARKS
	District No.	District No.	District No.	District No.	District No.	District No.																	
	Rate	Rate	Rate	Rate	Rate	Rate																	
#2	1	85					1728		1728	1	2nd Half Paid OCT 3 1 1956	5342											
	2	40					814	20	834	2	1st Half Paid MAY 3 1 1956	8760		834									
	3	40					814	20	834	3	2nd Half Paid OCT 3 1 1956	16162											
	4	16					326		326	4	1st Half Paid MAY 3 1 1956	10472		163									163 179
	6	140					2848		2848	6	PAID IN FULL MAY 3 1 1956												
	7	48					976		976	7	PAID IN FULL MAY 3 1 1956	8783		5328									
	8	42					854		854	8	PAID IN FULL MAY 3 1 1956												
	9	32					650		650	9	PAID IN FULL MAY 3 1 1956												
	11	50					1016		1016	11	2nd Half Paid OCT 3 1 1956												
	12	24					488		488	12	1st Half Paid MAY 3 1 1956	8885		1728									
	13	59					1200		1200	13	2nd Half Paid OCT 3 1 1956	15142											
	14	37					752		752	14	1st Half Paid MAY 3 1 1956												
	16	50					1016		1016	16	1st Half Paid MAY 3 1 1956			508									508 559
	17	64					1302		1302	17	1st Half Paid MAY 3 1 1956			651									651 716
	18	172					3498		3498	18	1st Half Paid MAY 3 1 1956	10472		1749									1749 1924
	19	21					428		428	19	1st Half Paid MAY 3 1 1956			214									214 235
	20	840					18710	40	18750					12039		3426							3285

133-29 132-29

133-30

3

4

5

6

7

Village of Sylvan

North Sylvan

Carlson's Sylvan Parkbench

Land & Allent's Ltd

Assessment Roll and Tax List of Real Property in the Town of Sylvan, Cass County, Minnesota, for Taxes for the Year 1955.

Form 30D (55) BILLS-GAY COMPANY, MINNEAPOLIS

*Indicate Type of Property: R-Residential, C-Commercial, I-Industrial, U-Utility, F-Farm

Table with columns: IN WHOSE NAME ASSESSED, TO WHOM TRANSFERRED, DESCRIPTION OF PROPERTY, TRUE AND FULL VALUATIONS, ASSESSED VALUATIONS, and FINAL EQUALIZED VALUE.

Cass County, Minnesota, for Taxes for the Year 1955.

Table with columns: VALUATIONS BY SCHOOL DISTRICTS AS EQUALIZED BY DEPARTMENT OF TAXATION, Tax including State Homestead, State Tax on Non-Homestead, SPECIAL TAXES, TOTAL TAXES, PAID, WHEN PAID, Number of Receipt, March Settlement 1956, June Settlement 1956, Penalty, November Settlement 1956, Penalty, Collections to First Monday in January 1957, Penalty, Delinquent on First Monday in January 1957, Total Delinquent Tax and Penalty, and REMARKS.

133-28 132-28

133-30

6

7

Village of Sylvan

North Sylvan

Carlton's Sylvan Parkbeach

Land & Allen's List

Assessment Roll and Tax List of Real Property in the Town of Seylan of Seylan,
*Indicate Type of Property: R-Residential, C-Commercial, I-Industrial, U-Utility, F-Farm

Form SCD-55 MILLER-DAVIS COMPANY, MINNEAPOLIS

IN WHOSE NAME ASSESSED	TO WHOM TRANSFERRED	SUBDIVISION	Number of Acres of Land		No. School District	Indicate Homestead Yes or No	Indicate Agricultural Yes or No	Indicate Type of Property	TRUE AND FULL VALUATIONS				ASSESSED VALUATIONS					FINAL EQUALIZED VALUE				
			Sec. or Lot	Town or Block					Rng	Dollars	Dollars	Dollars	Dollars	RURAL		ALL OTHER			MACHINERY Permanently Attached to Real Estate	TOTAL ASSESSED VALUE	Total Assessed Value as Equalized by the Board of Review	
														Acres	100ths	Homestead Up to \$4,000 20%	Over \$4,000 and Non-Homestead 33 1/3%					Homestead Up to \$4,000 25%
J. H. Berglund	State of Minnesota	NE 1/4 of NE 1/4	10	133	30	40	39	152	10	Yes												
State of Minnesota		NW 1/4 of NE 1/4																				
State of Minnesota		SW 1/4 of NE 1/4																				
State of Minnesota		SE 1/4 of NE 1/4																				
Leslie & Rose Pitz	State of Minnesota	NE 1/4 of NW 1/4				40		Yes														
"	State of Minnesota	NW 1/4 of NW 1/4				40		"														
State of Minnesota		SW 1/4 of NW 1/4																				
State of Minnesota		SE 1/4 of NW 1/4																				
Ernest J. & Orpha Stark	"	NE 1/4 of SW 1/4				40		"														
"	"	NW 1/4 of SW 1/4				40		"														
"	"	SW 1/4 of SW 1/4				40		"														
"	"	SE 1/4 of SW 1/4				40		"														
Wm. Roy Fisher		NE 1/4 of SE 1/4				40		No														
Ernest J. & Orpha M. Stark		NW 1/4 of SE 1/4				40		Yes														
"		SW 1/4 of SE 1/4				40		"														
Wm. Roy Fisher		SE 1/4 of SE 1/4				40		No														
						440																

Cass County, Minnesota, for Taxes for the Year 1955.

SOLD FOR TAXES	VALUATIONS BY SCHOOL DISTRICTS AS EQUALIZED BY DEPARTMENT OF TAXATION						Tax Including State Homestead	State Tax on Non-Homestead	SPECIAL TAXES	TOTAL TAXES	PAID	WHEN PAID	Number of Receipt	March Settlement 1956	June Settlement 1956	Penalty	November Settlement 1956	Penalty	Collections to First Monday in January 1957	Penalty	Delinquent on First Monday in January 1957	Total Delinquent Tax and Penalty	REMARKS
	District No.	District Rate	District No.	District Rate	District No.	District Rate																	
	Dollars	Dollars	Dollars	Dollars	Dollars	Dollars																	
1							1626	42	1668														
2																							
3																							
4																							
5																							
6	X	24					488		488														
7	X	46					936		936														
8																							
9																							
10																							
11	X	187					3802		3802														
12	X	30					610		610														
13	X	48					976		976														
14	X	74					1504		1504														
15																							
16	X	40					814	20	834														
17	X	24					488		488														
18	X	24					488		488														
19	X	210					4270	108	4378														
20	X	457					82	16002	190	16172													

Village of Seylan
North Seylan
Carlton's Seylan Parkbeach
Land & Allen's

Assessment Roll and Tax List of Real Property in the Town of Sylvan of Sylvan

Form SCD (55) - MILLER-BAYNE COMPANY, MINNEAPOLIS

*Indicate Type of Property: R-Residential, C-Commercial, I-Industrial, U-Utility, F-Farm

IN WHOSE NAME ASSESSED	TO WHOM TRANSFERRED	DESCRIPTION OF PROPERTY				Indicate Homestead Yes or No	Indicate Agricultural Yes or No	* Indicate Type of Property	TRUE AND FULL VALUATIONS			ASSESSED VALUATIONS					FINAL EQUALIZED VALUE		
		SUBDIVISION	Sec. or Lot	Town or Block	Range				Number of Acres of Land	LAND Exclusive of Structures and Improvements	BUILDINGS and Other Structures	MACHINERY Permanently Attached to Real Estate	TOTAL True and Full Value	RURAL		ALL OTHER			
														Acres	100ths	Homestead Up to \$4,000 20%		Over \$4,000 and Non-Homestead 33 1/3%	Homestead Up to \$4,000 25%
		NE 1/4 of NE 1/4	11	133	30														
<i>Sylvia Newkirk</i>		NW 1/4 of NE 1/4																	
<i>Frank S. & Alice M. Allen</i>		Lot 2 less Platted SW 1/4 of NE 1/4			26	50		70											
<i>Jerome V. Blatz</i>		Lot 1 less 47 a/c. Platted SE 1/4 of NE 1/4			30	05													
<i>Sylvia Newkirk</i>		Lot 4 less Platted NE 1/4 of NW 1/4			32	25													
<i>Frank S. & Alice M. Allen</i>		Lot 5 less Platted NW 1/4 of NW 1/4			32	25													
" "	" "	Lot 3 less Platted SW 1/4 of NW 1/4			16	25													
" "	" "	SE 1/4 of NW 1/4			21	25													
" "	" "																		
" "	" "	NE 1/4 of SW 1/4			40														
" "	" "	NW 1/4 of SW 1/4			40														
" "	" "	SW 1/4 of SW 1/4			40														
" "	" "	SE 1/4 of SW 1/4			40														
<i>Jerome V. Blatz</i>		NE 1/4 of SE 1/4			40														
<i>Frank S. & Alice M. Allen</i>		NW 1/4 of SE 1/4			40														
<i>Jerome V. Blatz</i>		SW 1/4 of SE 1/4			40														
<i>Frank S. & Alice M. Allen</i>		SE 1/4 of SE 1/4			40														
<i>Milton V. Anderson</i>		Lot 6																	
					47	55													

Cass County, Minnesota, for Taxes for the Year 1955.

SOLD FOR TAXES	VALUATIONS BY SCHOOL DISTRICTS AS EQUALIZED BY DEPARTMENT OF TAXATION						Tax including State Homestead	State Tax on Non-Homestead	SPECIAL TAXES	TOTAL TAXES	PAID	WHEN PAID	Number of Receipt	March Settlement 1956	June Settlement 1956	Penalty	November Settlement 1956	Penalty	Collections to First Monday in January 1957	Penalty	Delinquent on First Monday in January 1957	Total Delinquent Tax and Penalty	REMARKS
	District No.	District No.	District No.	District No.	District No.	District No.																	
	Rate	Rate	Rate	Rate	Rate	Rate																	
1																							
2																							
3						44			894	22	916	3	PAID IN FULL	MAY 17 1956	6654								916
4						280			5644	144	5838	4	PAID IN FULL	MAY 31 1956	8786								5838
5																							
6									874	22	896	6	PAID IN FULL	MAY 17 1956									896
7									874	22	896	7	PAID IN FULL	MAY 17 1956	6654								896
8									550	14	564	8	PAID IN FULL	MAY 17 1956									564
9									570	14	584	9	PAID IN FULL	MAY 17 1956									584
10																							
11									1078	28	1106	11	PAID IN FULL	MAY 17 1956									1106
12									1566	40	1606	12	PAID IN FULL	MAY 17 1956	6654								1606
13									1688	42	1730	13	PAID IN FULL	MAY 17 1956									1730
14									1688	42	1730	14	PAID IN FULL	MAY 17 1956									1730
15																							
16									2440	62	2502	16	PAID IN FULL	MAY 31 1956	8786								2502
17									2298	58	2356	17	PAID IN FULL	MAY 17 1956	6654								2356
18									2196	56	2252	18	PAID IN FULL	MAY 17 1956									2252
19									2440	62	2502	19	PAID IN FULL	MAY 31 1956	8786								2502
20																							
									24850	628	25478												25478

133-29 132-29

133-30

3

4

5

6

7

VILLAGE OF SYLVAN North Sylvan Carlton's Sylvan Parkbeach Land & Allen's 1st Addn to 897V

Assessment Roll and Tax List of Real Property in the Town of Sylvan, Cass County, Minnesota, for Taxes for the Year 1955.

Form SCD (55) WALKER-BATE COMPANY, MINNEAPOLIS

*Indicate Type of Property: R-Residential, C-Commercial, I-Industrial, U-Utility, F-Farm

Table with columns: IN WHOSE NAME ASSESSED, TO WHOM TRANSFERRED, DESCRIPTION OF PROPERTY, TRUE AND FULL VALUATIONS, ASSESSED VALUATIONS, FINAL EQUALIZED VALUE.

Theodore J. Jr. + Betty L. Hobben

Jerome V. Blatz

Jerome V. Blatz

Henry E. Schlot + Mike Ombria

58630

Cass County, Minnesota, for Taxes for the Year 1955.

Table with columns: VALUATIONS BY SCHOOL DISTRICTS AS EQUALIZED BY DEPARTMENT OF TAXATION, TAXES, PAID, WHEN PAID, Number of Receipt, March Settlement, June Settlement, November Settlement, Collections to First Monday in January, Delinquent on First Monday in January, Total Delinquent Tax and Penalty, REMARKS.

#2

PAID

975

#2

19828

506

20334

14160

2274

3900

Assessment Roll and Tax List of Real Property in the Town of Sylvan, Cass County, Minnesota, for Taxes for the Year 1955.

Form 501 (55) MILLER-DAY COMPANY, MINNEAPOLIS

*Indicate Type of Property: R-Residential, C-Commercial, I-Industrial, U-Utility, F-Farm

Table with columns: IN WHOSE NAME ASSESSED, TO WHOM TRANSFERRED, DESCRIPTION OF PROPERTY, TRUE AND FULL VALUATIONS, ASSESSED VALUATIONS, and FINAL EQUALIZED VALUE. Includes handwritten entries for John T. Parks, Ida Anderson, James + Johanna Farnshell, C. W. Sliter, and Clarence H. Sliter.

Table with columns: VALUATIONS BY SCHOOL DISTRICTS AS EQUALIZED BY DEPARTMENT OF TAXATION, TAX INCLUDING STATE HOMESTEAD, SPECIAL TAXES, TOTAL TAXES, PAID, WHEN PAID, Number of Receipt, March Settlement 1956, June Settlement 1956, Penalty, November Settlement 1956, Penalty, Collections to First Monday in January 1957, Penalty, Delinquent on First Monday in January 1957, Total Delinquent Tax and Penalty, REMARKS. Includes handwritten notes on payments and taxes.

Vertical text on the left margin: 133-29 132-29, 133-30, 133-31, 133-32, 133-33, 133-34, 133-35, 133-36, 133-37, 133-38, 133-39, 133-40

Vertical text on the right margin: Village of Sylvan, North Sylvan, Carlyon's Sylvan Parkbeach, Land & Allen's 1st Addn to 872

Assessment Roll and Tax List of Real Property in the Town of Sylvan, Cass County, Minnesota, for Taxes for the Year 1955.

Form SCD (55) BULLER-DAY COMPANY, MINNEAPOLIS

Table with columns: IN WHOSE NAME ASSESSED, TO WHOM TRANSFERRED, DESCRIPTION OF PROPERTY, TRUE AND FULL VALUATIONS, ASSESSED VALUATIONS, and FINAL EQUALIZED VALUE. Includes handwritten entries for Arthur S. Fowler, Minnesota Power & Light Co., J. P. Hanson, etc.

359 41

Cass County, Minnesota, for Taxes for the Year 1955.

Table with columns: SOLD FOR TAXES, VALUATIONS BY SCHOOL DISTRICTS AS EQUALIZED BY DEPARTMENT OF TAXATION, Tax including State Homestead, State Tax on Non-Homestead, SPECIAL TAXES, TOTAL TAXES, PAID, WHEN PAID, Number of Receipt, March Settlement, June Settlement, November Settlement, Collections to First Monday in January, Delinquent on First Monday in January, Total Delinquent Tax and Penalty, and REMARKS. Includes handwritten entries for #2, #252, etc.

Handwritten calculations: # 491, # 252 = 743, 127 = 379, 15112, 196, 23766, 33962, 11283, 12679

133-29 132-29

133-30

Village of Sylvan

North Sylvan

Carlton's Sylvan Park

Land & Allen's 1st Add'n to Sylvan

Assessment Roll and Tax List of Real Property in the Town of Sylvan,
*Indicate Type of Property: R-Residential, C-Commercial, I-Industrial, U-Utility, F-Farm

Cass County, Minnesota, for Taxes for the Year 1955.

Form 5CD (55) WILCO-DAVIS COMPANY, MINNEAPOLIS

IN WHOSE NAME ASSESSED	TO WHOM TRANSFERRED	DESCRIPTION OF PROPERTY				No. School District	Indicate Homestead Yes or No	Indicate Agricultural Yes or No	Indicate Type of Property	TRUE AND FULL VALUATIONS					Total Assessed Value as Equalized by the Board of Review	FINAL EQUALIZED VALUE		
		SUBDIVISION	Sec. of Lot	Town or Block	Rng					Number of Acres of Land	RURAL		ALL OTHER				MACHINERY Permanently Attached to Real Estate	TOTAL ASSESSED VALUE
											Acres	100ths	Homestead Up to \$4,000 20%	Over \$4,000 and Non-Homestead 33 1/3%				
John W. Lee		NE 1/4 of NE 1/4	16	133	30	40												
"		NW 1/4 of NE 1/4				40												
Marie A. Thompson		SW 1/4 of NE 1/4				40												
"		SE 1/4 of NE 1/4 less 3.76 acs.				35	24											
John W. Lee		NE 1/4 of NW 1/4				40												
"		NW 1/4 of NW 1/4				40												
"		SW 1/4 of NW 1/4				40												
"		SE 1/4 of NW 1/4				40												
John Wellington Lee		NE 1/4 of SW 1/4 less 1/2 ac. Ref. Pt. W. 1/2				33	76											
		NW 1/4 of SW 1/4																
		SW 1/4 of SW 1/4																
Otto & Eleanor Citrowski		SE 1/4 of SW 1/4 less 2 1/2 ac. flowage rights to Minn. Power Light Co.				30												
Minnesota Power & Light Co.		5.5 acs. of lot 14 2				5	50											
P. O. Berglund		NE 1/4 of SE 1/4 less 3 1/2 ac. flowage rights to Minn. Power Light Co.				12	33											
		NW 1/4 of SE 1/4																
		SW 1/4 of SE 1/4																
		SE 1/4 of SE 1/4																
Minnesota Power & Light Co.		2.5 acs. of lot 2				2	5											
							33											

SOLD FOR TAXES	VALUATIONS BY SCHOOL DISTRICTS AS EQUALIZED BY DEPARTMENT OF TAXATION						Tax including State Homestead	State Tax on Non-Homestead	SPECIAL TAXES	TOTAL TAXES	PAID	WHEN PAID	Number of Receipt	March Settlement 1956	June Settlement 1956	November Settlement 1956	Penalty	Collections to First Monday in January 1957	Penalty	Delinquent on First Monday in January 1957	Total Delinquent Tax and Penalty	REMARKS
	District No.	District No.	District No.	District No.	District No.	District No.																
	Rate	Rate	Rate	Rate	Rate	Rate																
1						48			976	1 PAID IN FULL	MAY 31 1956	8889		14 64								
2						24			488	2 PAID IN FULL	MAY 31 1956											
3						106			2156	3 PAID IN FULL	MAY 31 1956			21 56								
4						56			1138	4 PAID IN FULL	MAY 31 1956			11 38								
5																						
6						24			488	6 PAID IN FULL	MAY 31 1956											
7						24			488	7 PAID IN FULL	MAY 31 1956	8889		68 52								
8						251			5104	8 PAID IN FULL	MAY 31 1956											
9						38			172	9 PAID IN FULL	MAY 31 1956											
10																						
11						16			326	11 PAID IN FULL	MAY 31 1956	8889		3 26								
12																						
13																						
14									1484	14 2nd Half Paid	OCT 31 1956	16220								1522	16 74	
15									366	15 1st Half Paid	MAY 31 1956	10303		1 17		187						
16									488	16 PAID IN FULL	MAY 31 1956	7217		5 46								
17																						
18																						
19																						
20									162	20 2nd Half Paid	OCT 31 1956	16220		73		83						
									366	1st Half Paid	MAY 31 1956	14303										
									121													
									708													
									14020													
									14436													
									14498													

133-29 132-29

133-30

Village of Sylvan
North Sylvan
Carlton's Sylvan Park
Land & Allen's
Addn to Sylvan

Assessment Roll and Tax List of Real Property in the Town of Sylvan of Sylvan County, Minnesota

Form 5CD (55) MILLER-DAY COMPANY, MINNEAPOLIS

*Indicate Type of Property: R-Residential, C-Commercial, I-Industrial, U-Utility, F-Farm

Table with columns: IN WHOSE NAME ASSESSED, TO WHOM TRANSFERRED, DESCRIPTION OF PROPERTY, TRUE AND FULL VALUATIONS, ASSESSED VALUATIONS, FINAL EQUALIZED VALUE.

Cass County, Minnesota, for Taxes for the Year 1955.

Table with columns: VALUATIONS BY SCHOOL DISTRICTS AS EQUALIZED BY DEPARTMENT OF TAXATION, Tax including State Homestead, State Tax on Non-Homestead, SPECIAL TAXES, TOTAL TAXES, PAID, WHEN PAID, Number of Receipt, March Settlement, June Settlement, November Settlement, Collections to First Monday in January 1957, Delinquent on First Monday in January 1957, Total Delinquent Tax and Penalty, REMARKS.

133-29 132-29

133-30

Village of Sylvan

North Sylvan

Carlson's Sylvan Parksidech

Land & Allen's 1st Addn to Sylvan

Assessment Roll and Tax List of Real Property in the Town of Sylvan, County of Sylvan, Minnesota
*Indicate Type of Property: R-Residential, C-Commercial, I-Industrial, U-Utility, F-Farm

Form SCD (55) MILLER-DAVIS COMPANY, MINNEAPOLIS

Table with columns: IN WHOSE NAME ASSESSED, TO WHOM TRANSFERRED, DESCRIPTION OF PROPERTY (Subdivision, Acres, etc.), TRUE AND FULL VALUATIONS (Rural, All Other, Machinery, etc.), FINAL EQUALIZED VALUE. Includes entries for Frank Swanson, Rose Marie Orr + Helen Antone Stephenson, Sewell + Mildred Sutton, Stewart + Marilyn Hauer.

133-29 133-29

133-30

Cass County, Minnesota, for Taxes for the Year 1955.

Table with columns: SOLD FOR TAXES, VALUATIONS BY SCHOOL DISTRICTS AS EQUALIZED BY DEPARTMENT OF TAXATION, Tax including State Homestead, State Tax on Non-Homestead, SPECIAL TAXES, TOTAL TAXES, PAID, WHEN PAID, Number of Receipt, March Settlement 1956, June Settlement 1956, Penalty, November Settlement 1956, Penalty, Collections to First Monday in January 1957, Penalty, Delinquent on First Monday in January 1957, Total Delinquent Tax and Penalty, REMARKS. Includes handwritten notes like '#2', '8309', '1060', '8368', and a summary row at the bottom.

Village of Sylvan
North Sylvan
Carl York's Sylvan Parkbeach
Lund & Allen's 1st Addn to Sylvan Pk

Assessment Roll and Tax List of Real Property in the Town of Sylvan

Form SCD (55) MILLER-DAVIS COMPANY, MINNEAPOLIS

*Indicate Type of Property: R-Residential, C-Commercial, I-Industrial, U-Utility, F-Farm

Main table with columns: IN WHOSE NAME ASSESSED, TO WHOM TRANSFERRED, DESCRIPTION OF PROPERTY, TRUE AND FULL VALUATIONS (LAND, BUILDINGS, MACHINERY, TOTAL), ASSESSED VALUATIONS (RURAL, ALL OTHER, MACHINERY, TOTAL ASSESSED VALUE), Total Assessed Value as Equalized by the Board of Review, FINAL EQUALIZED VALUE.

Cass County, Minnesota, for Taxes for the Year 1955.

Tax summary table with columns: VALUATIONS BY SCHOOL DISTRICTS AS EQUALIZED BY DEPARTMENT OF TAXATION, Tax including State Homestead, State Tax on Non-Homestead, SPECIAL TAXES, TOTAL TAXES, PAID, WHEN PAID, Number of Receipt, March Settlement, June Settlement, Penalty, November Settlement, Penalty, Collections to First Monday in January 1957, Delinquent on First Monday in January 1957, Total Delinquent Tax and Penalty, REMARKS.

133-29 136-29

133-30

Village of Sylvan

North Sylvan

Carlson's Sylvan Parkbeach

Land & Allen's 1st Addn to Sylvan P.

Assessment Roll and Tax List of Real Property in the Town of Sylvan of Iowa, *Indicate Type of Property: R-Residential, C-Commercial, I-Industrial, U-Utility, F-Farm

Form SCD (55) MILLER-DAY COMPANY, MINNEAPOLIS

Table with columns: IN WHOSE NAME ASSESSED, TO WHOM TRANSFERRED, SUBDIVISION, TRUE AND FULL VALUATIONS (LAND, BUILDINGS, MACHINERY, TOTAL), ASSESSED VALUATIONS (RURAL, ALL OTHER, MACHINERY, TOTAL), FINAL EQUALIZED VALUE. Includes handwritten entries for Minnesota Power & Light Co., Geo. A. Albrecht, Harvey Houseman, Lena Cole, Wesley E. Peterson, and James W. & Margaret Terwilliger.

Cass County, Minnesota, for Taxes for the Year 1955.

Table with columns: SOLD FOR TAXES, VALUATIONS BY SCHOOL DISTRICTS AS EQUALIZED BY DEPARTMENT OF TAXATION, Tax including State Homestead, State Tax on Non-Homestead, SPECIAL TAXES, TOTAL TAXES, PAID, WHEN PAID, Number of Receipt, March Settlement 1956, June Settlement 1956, Penalty, November Settlement 1956, Penalty, Collections to First Monday in January 1957, Delinquent on First Monday in January 1957, Total Delinquent Tax and Penalty, REMARKS. Includes handwritten entries for #2, #2, and various tax amounts and dates.

133-29 133-28

133-30

Village of Sylvan, North Sylvan, Carlyon's Sylvan Parkbeach, Land & Albert's 1st Addn to Sylvan

Assessment Roll and Tax List of Real Property in the Town of Sylvania

Cass County, Minnesota, for Taxes for the Year 1955.

Form 5CD (55) HILLS-DAY COMPANY, MINNEAPOLIS

*Indicate Type of Property: R-Residential, C-Commercial, I-Industrial, U-Utility, F-Farm

#2

IN WHOSE NAME ASSESSED	TO WHOM TRANSFERRED	DESCRIPTION OF PROPERTY				TRUE AND FULL VALUATIONS												FINAL EQUALIZED VALUE		
		SUBDIVISION	Sec. or Lot	Town or Block	Ring	Number of Acres of Land	LAND EXCLUSIVE OF STRUCTURES AND IMPROVEMENTS				BUILDINGS AND OTHER STRUCTURES				MACHINERY PERMANENTLY ATTACHED TO REAL ESTATE		TOTAL TRUE AND FULL VALUE		Total Assessed Value as Equalized by the Board of Review	
							RURAL		ALL OTHER		MACHINERY		TOTAL ASSESSED VALUE							
							Acres	100ths	Homestead Up to \$4,000 20%	Over \$4,000 and Non-Homestead 33 1/8%	Homestead Up to \$1,000 25%	Over \$4,000 and Non-Homestead 40%	MACHINERY Permanently Attached to Real Estate 33 1/8%	TOTAL ASSESSED VALUE						
Lewis J. & Bertha Johnson	Theodore Prescott	Lot 2, 2.66 ac. of NE 1/4	21	133	30	2.66													22.0	
		2 acs. of Lot 2, NW 1/4 of NE 1/4				2														
		SW 1/4 of NE 1/4																		
		SE 1/4 of NE 1/4																		
Otto + Eleanor Citronski		Lot 2 less 4.66 acs.				9.59														247
		NE 1/4 of NW 1/4																		
		NW 1/4 of NW 1/4																		
		SW 1/4 of NW 1/4																		
		SE 1/4 of NW 1/4																		
State of Minnesota		Lot 2				23	133	30												
		NE 1/4 of SW 1/4																		
		NW 1/4 of SW 1/4																		
		SW 1/4 of SW 1/4																		
		SE 1/4 of SW 1/4																		
		NE 1/4 of SE 1/4																		
		NW 1/4 of SE 1/4																		
		SW 1/4 of SE 1/4																		
		SE 1/4 of SE 1/4																		

SOLD FOR TAXES	VALUATIONS BY SCHOOL DISTRICTS AS EQUALIZED BY DEPARTMENT OF TAXATION						Tax including State Homestead	State Tax on Non-Homestead	SPECIAL TAXES	TOTAL TAXES	PAID	WHEN PAID	Number of Receipt	March Settlement 1956	June Settlement 1956	Penalty	November Settlement 1956	Penalty	Collections to First Monday in January 1957	Penalty	Delinquent on First Monday in January 1957	Total Delinquent Tax and Penalty	REMARKS
	District No.	District No.	District No.	District No.	District No.	District No.																	
	Rate	Rate	Rate	Rate	Rate	Rate																	
	Mills	Mills	Mills	Mills	Mills	Mills																	
	Dollars	Dollars	Dollars	Dollars	Dollars	Dollars	\$ cts.	\$ cts.	\$ cts.	\$ cts.	Month Day Year	\$ cts.	\$ cts.	\$ cts.	\$ cts.	\$ cts.	\$ cts.	\$ cts.	\$ cts.	\$ cts.	\$ cts.	\$ cts.	\$ cts.
1	18						366		366			1	PAID IN FULL MAY 31 1956 8875		366								
2	220						4474	114	4588			2	2nd Half Paid OCT 1 8 1956 14382 1st Half Paid MAY 3 1 1956 10479		2294		2294						
5	247						5022	128	5150			5										5150 85665	
18	467						9862	242	10104						2660		2294					5150	

133-29 133-29

133-30

Village of Sylvania

North Sylvania

Carlyon's Sylvania Parkbeach

Land & Allen's 1st Addn to Sylvania Pk

Assessment Roll and Tax List of Real Property in the Town of Sylvan, Cass County, Minnesota, for Taxes for the Year 1955.

Form SCD (55) WILHELM-GAYNE COMPANY, MINNEAPOLIS

*Indicate Type of Property: R-Residential, C-Commercial, I-Industrial, U-Utility, F-Farm

Table with columns: IN WHOSE NAME ASSESSED, TO WHOM TRANSFERRED, DESCRIPTION OF PROPERTY, TRUE AND FULL VALUATIONS, ASSESSED VALUATIONS, FINAL EQUALIZED VALUE.

Cass County, Minnesota, for Taxes for the Year 1955.

#2

Table with columns: VALUATIONS BY SCHOOL DISTRICTS AS EQUALIZED BY DEPARTMENT OF TAXATION, TAX INCLUDING STATE HOMESTEAD, SPECIAL TAXES, TOTAL TAXES, PAID, WHEN PAID, March Settlement, June Settlement, November Settlement, Collections to First Monday in January 1957, Delinquent on First Monday in January 1957, Total Delinquent Tax and Penalty, REMARKS.

133-29 136-29

133-30

Village of Sylvan, North Sylvan, Carlyon's Sylvan Parkbeach, Land & Albert's 1st Addn to Sylvan P.

Assessment Roll and Tax List of Real Property in the _____ of _____

*Indicate Type of Property: R-Residential, C-Com

Form 5CD (55) MILLER-OLIVER COMPANY, MINNEAPOLIS

IN WHOSE NAME ASSESSED	TO WHOM TRANSFERRED	DESCRIPTION OF PROPERTY							TRUE AND FULL VALUATIONS							
		SUBDIVISION	Sec. or Lot	Town or Block	Rng	Number of Acres of Land	No. School District	Indicate Homestead Yes or No	Indicate Agricultural Yes or No	* Indicate Type of Property	LAND Exclusive of Structures and Improvements	BUILDINGS and Other Structures	MACHINERY Permanently Attached to Real Estate	TOTAL True and Full Value	R U R	
															Acres	100ths
		NE ¼ of NE ¼							Dollars	Dollars	Dollars	Dollars	Dollars			
		NW ¼ of NE ¼							Dollars	Dollars	Dollars	Dollars	Dollars			
		SW ¼ of NE ¼							Dollars	Dollars	Dollars	Dollars	Dollars			
		SE ¼ of NE ¼							Dollars	Dollars	Dollars	Dollars	Dollars			
		NE ¼ of NW ¼							Dollars	Dollars	Dollars	Dollars	Dollars			
		NW ¼ of NW ¼							Dollars	Dollars	Dollars	Dollars	Dollars			
		SW ¼ of NW ¼							Dollars	Dollars	Dollars	Dollars	Dollars			
		SE ¼ of NW ¼							Dollars	Dollars	Dollars	Dollars	Dollars			
		NE ¼ of SW ¼							Dollars	Dollars	Dollars	Dollars	Dollars			
		NW ¼ of SW ¼							Dollars	Dollars	Dollars	Dollars	Dollars			
		SW ¼ of SW ¼							Dollars	Dollars	Dollars	Dollars	Dollars			
		SE ¼ of SW ¼							Dollars	Dollars	Dollars	Dollars	Dollars			
		NE ¼ of SE ¼							Dollars	Dollars	Dollars	Dollars	Dollars			
		NW ¼ of SE ¼							Dollars	Dollars	Dollars	Dollars	Dollars			
		SW ¼ of SE ¼							Dollars	Dollars	Dollars	Dollars	Dollars			
		SE ¼ of SE ¼							Dollars	Dollars	Dollars	Dollars	Dollars			

PAGES

47

THRU

50

BLANK

Cass County, Minnesota, for Taxes for the Year 1955.

AS- TION	District	District No.	Tax including State Homestead	State Tax on Non-Homestead	SPECIAL TAXES	TOTAL TAXES	PAID	WHEN PAID	Number of Receipt	March Settlement 1955	June Settlement 1955	Penalty	November Settlement 1955	Penalty	Collections to First Monday in January 1957	Penalty	Delinquent on First Monday in January 1957	Total Delinquent Tax and Penalty	REMARKS	
	Dollars	Dollars	\$ cts.	\$ cts.	\$ cts.	\$ cts.		Month Day Year		\$ cts.	\$ cts.	\$ cts.	\$ cts.	\$ cts.	\$ cts.	\$ cts.	\$ cts.	\$ cts.		

Village of Sylvan, North Sylvan, Carlyon's Sylvan Parkbeach, Land & Allen's 1st Add'n to Sylvan Pa.

Assessment Roll and Tax List of Real Property in the Town of Sylvan,

*Indicate Type of Property: R-Residential, C-Commercial, I-Industrial, U-Utility, F-Farm

IN WHOSE NAME ASSESSED	TO WHOM TRANSFERRED	DESCRIPTION OF PROPERTY				No. School District	Indicate Homestead Yes or No	Indicate Agricultural Yes or No	Indicate Type of Property	TRUE AND FULL VALUATIONS				ASSESSED VALUATIONS						FINAL EQUALIZED VALUE		
		SUBDIVISION	Sec. or Lot	Town or Block	Rng					Number of Acres of Land	LAND Exclusive of Structures and Improvements	BUILDINGS and Other Structures	MACHINERY Permanently Attached to Real Estate	TOTAL True and Full Value	RURAL		ALL OTHER		MACHINERY Permanently Attached to Real Estate		TOTAL ASSESSED VALUE	Total Assessed Value as Equalized by the Board of Review
															Acres	100ths	Homestead Up to \$4,000 20%	Over \$4,000 and Non-Homestead 33 1/4%				
Charles M. + Della D. Luttrell		Village of Sylvan																				
Chas. H. Johnson																						
George M. + Bernice V. Wilder																						
" " "																						
" " "																						
Jack F. + Ellen J. Marlow																						
" " "																						
John J. Sylvan																						
Charles M. + Della D. Luttrell																						
" " "																						
" " "																						
Geo. M. + Bernice V. Wilder																						
" " "																						
George M. Wilder																						
" " "																						
" " "																						
" " "																						
" " "																						
" " "																						
" " "																						

Cass County, Minnesota, for Taxes for the Year 1955.

SOLD FOR TAXES	VALUATIONS BY SCHOOL DISTRICTS AS EQUALIZED BY DEPARTMENT OF TAXATION						Tax including State Homestead	State Tax on Non-Homestead	SPECIAL TAXES	TOTAL TAXES	PAID	WHEN PAID	Number of Receipt	March Settlement 1956	June Settlement 1956	Penalty	November Settlement 1956	Penalty	Collections to First Monday in January 1957	Penalty	Delinquent on First Monday in January 1957	Total Delinquent Tax and Penalty	REMARKS
	District No.	District No.	District No.	District No.	District No.	District No.																	
	Rate	Rate	Rate	Rate	Rate	Rate																	
1							40		40		1 PAID IN FULL	MAY 2 1956	5645		2.28								
2							184	04	188		2 PAID IN FULL	MAY 2 1956											
3							20		20		3 PAID IN FULL	MAY 31 1956											
4							20		20		4 PAID IN FULL	MAY 31 1956	13167		60								
5							20		20		5 PAID IN FULL	MAY 31 1956											
6							40		40		6										40		
7							40		40		7										40		
8											8												
9							40		40		9 PAID IN FULL	MAR 22 1956											
10							40		40		10 PAID IN FULL	MAR 22 1956	4695		7.68								
11							672	16	688		11 PAID IN FULL	MAR 22 1956											
12							20		20		12 PAID IN FULL	MAY 31 1956	13166		17.69								
13							1748		1748		13 PAID IN FULL	MAY 31 1956											
14							20		20		14 PAID IN FULL	MAY 31 1956											
15							20		20		15 PAID IN FULL	MAY 31 1956	13167		60								
16							20		20		16 PAID IN FULL	MAY 31 1956											
17											17												
18											18												
19											19												
20											20												

93 52 142 2944 20 2964 2884 80

133-29 132-29 133-30

Village of Sylvan

Sylvan Shady Shores

North Sylvan

Carlton's Sylvan Parkbeach

Land & Allen's 1st Add'n to Sylvan Park

Assessment Roll and Tax List of Real Property in the Town of Sylvan, Minnesota

Form 3C (55) MILLER-SAYRE COMPANY, MINNEAPOLIS

*Indicate Type of Property: R-Residential, C-Commercial, I-Industrial, U-Utility, F-Farm

Table with columns for IN WHOSE NAME ASSESSED, TO WHOM TRANSFERRED, DESCRIPTION OF PROPERTY, TRUE AND FULL VALUATIONS, ASSESSED VALUATIONS, and FINAL EQUALIZED VALUE.

Cass County, Minnesota, for Taxes for the Year 1955.

Table for tax calculations with columns for VALUATIONS BY SCHOOL DISTRICTS AS EQUALIZED BY DEPARTMENT OF TAXATION, TAXES, PAID, WHEN PAID, and various penalty and settlement dates.

133-29 132-29 Village of Sylvan

133-30 North Sylvan

Sylvan Shady Shores Land & Allen Carleton's Sylvan Parkbeach Land & Allen's 1st Add'n to Sylvan Park

Assessment Roll and Tax List of Real Property in the Town of Sylvan

*Indicate Type of Property: R-Residential, C-Commercial, I-Industrial, U-Utility, F-Farm

Form 5C (35) WISCONSIN STATE DEPARTMENT OF REVENUE

Table with columns: IN WHOSE NAME ASSESSED, TO WHOM TRANSFERRED, DESCRIPTION OF PROPERTY, TRUE AND FULL VALUATIONS, ASSESSED VALUATIONS, FINAL EQUALIZED VALUE.

Cass County, Minnesota, for Taxes for the Year 1955.

Table with columns: VALUATIONS BY SCHOOL DISTRICTS AS EQUALIZED BY DEPARTMENT OF TAXATION, TAXES, PAID, WHEN PAID, Number of Receipt, March Settlement 1956, June Settlement 1956, Penalty, November Settlement 1956, Collections to First Monday in January 1957, Delinquent on First Monday in January 1957, Total Delinquent Tax and Penalty, REMARKS.

133-29 133-29

Village of Sylvan

133-30

Carlyon's Sylvan Park North Sylvan

Sylvan Shady Shores

Land & Allen's 2nd Add'n to Sylvan Beach

Sylvan Beach

Land & Allen's 1st Add'n to Sylvan Beach

Assessment Roll and Tax List of Real Property in the Town of Sylvan, of Sylvan, Minnesota, for Taxes for the Year 1955.

Table with columns: IN WHOSE NAME ASSESSED, TO WHOM TRANSFERRED, DESCRIPTION OF PROPERTY, TRUE AND FULL VALUATIONS (LAND, BUILDINGS, MACHINERY, TOTAL), ASSESSED VALUATIONS (RURAL, ALL OTHER, MACHINERY, TOTAL ASSESSED), FINAL EQUALIZED VALUE.

Cass County, Minnesota, for Taxes for the Year 1955.

Table with columns: VALUATIONS BY SCHOOL DISTRICTS AS EQUALIZED BY DEPARTMENT OF TAXATION, TAXES (SPECIAL, TOTAL), PAID, WHEN PAID, Number of Receipt, March Settlement, June Settlement, November Settlement, Collections to First Monday in January, Delinquent on First Monday in January, Total Delinquent Tax and Penalty, REMARKS.

133-29 133-29

133-30

Village of Sylvan

Carlyon's Sylvan Park North Sylvan

Carlyon's Sylvan Park

Sylvan Shady Shores

Land & Allen's 2nd Add'n to Sylvan Beach

Sylvan Beach

Land & Allen's 1st Add'n to Sylvan Beach

Assessment Roll and Tax List of Real Property in the Town of Sylvan

*Indicate Type of Property: R-Residential, C-Commercial, I-Industrial, U-Utility, F-Farm

Form 5C (55) WILCOX-BAYNE COMPANY, MINNEAPOLIS

IN WHOSE NAME ASSESSED	TO WHOM TRANSFERRED	DESCRIPTION OF PROPERTY				No. School District	Indicate Homestead Yes or No	Indicate Agricultural Yes or No	Indicate Type of Property	TRUE AND FULL VALUATIONS						Total Assessed Value as Equalized by the Board of Review	FINAL EQUALIZED VALUE		
		SUBDIVISION	Sec. of Lot	Town or Block	Rng					Number of Acres of Land	Acres 160ths	RURAL		ALL OTHER				MACHINERY Permanently Attached to Real Estate	TOTAL ASSESSED VALUE
												LAND Exclusion of Structures and Improvements	BUILDINGS and Other Structures	MACHINERY Permanently Attached to Real Estate	TOTAL True and Full Value				
Thomas R. Carlson		Carlson's Sylvan Park	23				No	No											
Frieda R. Carlson			24				"	"											
"			30				"	"											
"			31				"	"											
"			32				"	"											
"			33				"	"											
"			34				"	"											
Township of Sylvan			35				Exempt												
"			36				"												
"			37				"												
"			38				"												
"			39				"												
"			40				"												
"			41				"												
"			42				"												
"			43				"												
"			44				"												
Frieda R. Carlson			45				No	No											
"			46				"	"											
Chas. R. + Mabel M. Woodhouse			47				"	"											

Cass County, Minnesota, for Taxes for the Year 1955.

SOLD FOR TAXES	VALUATIONS BY SCHOOL DISTRICTS AS EQUALIZED BY DEPARTMENT OF TAXATION						Tax including State Homestead	State Tax on Non-Homestead	SPECIAL TAXES	TOTAL TAXES	PAID	WHEN PAID	Number of Receipt	March Settlement 1956	June Settlement 1956	Penalty	November Settlement 1956	Penalty	Collections to First Monday in January 1957	Penalty	Delinquent on First Monday in January 1957	Total Delinquent Tax and Penalty	REMARKS
	District No.	District No.	District No.	District No.	District No.	District No.																	
	Rate	Rate	Rate	Rate	Rate	Rate																	
1							14 84	34	15 18	1													15188 1670
2							342	08	350	2	PAID IN FULL	MAY 31 1956		358									
3							228	06	234	3	PAID IN FULL	MAY 31 1956											
4							228	06	234	4	PAID IN FULL	MAY 31 1956	8881										
5							228	06	234	5	PAID IN FULL	MAY 31 1956		1166									
6							228	04	232	6	PAID IN FULL	MAY 31 1956											
7							228	04	232	7	PAID IN FULL	MAY 31 1956											
8										8													
9										9													
10										10													
11										11													
12										12													
13										13													
14										14													
15										15													
16										16													
17										17													
18										18	PAID IN FULL	MAY 31 1956	8862	372									
19										19	PAID IN FULL	MAY 31 1956											
20										20	PAID IN FULL	MAY 31 1956	8955	186									
										154													

133-29 132-29 Village of Sylvan
133-30 Carlyon's Sylvan Park North Sylvan

Sylvan Shady Shores
Land & Allen's 2nd Add'n to Sylvan Beach
Sylvan Beach
Land & Allen's 1st Add'n to Sylvan B...

Assessment Roll and Tax List of Real Property in the Town of Sylvan

Indicate Type of Property: R-Residential, C-Commercial, I-Industrial, U-Utility, F-Farm

Form 5C (55) MILLER-DAVIS COMPANY, MINNEAPOLIS

133-29 132-29 Village of Sylvan

133-30

Carlyon's Sylvan Park North Sylvan

Carlyon's Sylvan Park North Sylvan

IN WHOSE NAME ASSESSED	TO WHOM TRANSFERRED	DESCRIPTION OF PROPERTY				TRUE AND FULL VALUATIONS										FINAL EQUALIZED VALUE
		SUBDIVISION	Sec. or Lot	Town or Block	Rog	Number of Acres of Land	Total True and Full Value	RURAL		ALL OTHER		MACHINERY Permanently Attached to Real Estate	TOTAL ASSESSED VALUE	Total Assessed Value as Equalized by the Board of Review		
								Homestead Up to \$4,000 20%	Over \$4,000 and Non-Homestead 33 1/4%	Homestead Up to \$4,000 25%	Over \$4,000 and Non-Homestead 40%					
Chas. R. + Mabel M. Woodhouse		Carlyon's Sylvan Park	48													
"	"	"	49													
"	"	"	50													
"	"	"	51													
"	"	"	52													
Elmer P. Carver			53													
Dan + Mary Michalski			54													
Geo. M. + Bernice J. Wilder			55													
State of Minnesota			56													
State of Minnesota			57													
State of Minnesota			58													
Charles M. + Della D. Luttrell			59													
State of Minnesota			60													
State of Minnesota			61													
State of Minnesota			62													
State of Minnesota			63													
State of Minnesota			64													
State of Minnesota			65													

Cass County, Minnesota, for Taxes for the Year 1955.

SOLD FOR TAXES	VALUATIONS BY SCHOOL DISTRICTS AS EQUALIZED BY DEPARTMENT OF TAXATION						Tax including State Homestead	State Tax on Non-Homestead	SPECIAL TAXES	TOTAL TAXES	PAID	WHEN PAID	Number of Receipt	March Settlement 1956	June Settlement 1956	November Settlement 1956	Penalty	Collections to First Monday in January 1957	Penalty	Delinquent on First Monday in January 1957	Total Delinquent Tax and Penalty	REMARKS
	District No.	District No.	District No.	District No.	District No.	District No.																
	Rate	Rate	Rate	Rate	Rate	Rate																
1							182	04	186	1	PAID IN FULL	MAY 31 1956										
2							182	04	186	2	PAID IN FULL	MAY 31 1956	8795	930								
3							182	04	186	3	PAID IN FULL	MAY 31 1956										
4							182	04	186	4	PAID IN FULL	MAY 31 1956										
5							182	04	186	5	PAID IN FULL	MAY 31 1956										
6							2466	56	2522	6	PAID IN FULL	MAY 31 1956	8857	2522								
7							1142	26	1168	7	PAID IN FULL	FEB 28 1956	3193	1168								
8							4178	94	4272	8	PAID IN FULL	MAY 31 1956	13167	4272								
12	SOLD FOR TAXES						160	04	164	12	PAID IN FULL	MAY 31 1956	5647	164								
318							8856	200	9056				1168	7888								

Sylvan Shady Shores

Land & Allen's 2nd Add'n to Sylvan Beach

Sylvan Beach

Land & Allen's 1st Add'n to Sylvan Beach

Assessment Roll and Tax List of Real Property in the Town of Sylvan, of Sylvan, Minnesota

Form 30 (55) MILLER-DAVIS COMPANY, MINNEAPOLIS

*Indicate Type of Property: R-Residential, C-Commercial, I-Industrial, U-Utility, F-Farm

Cass County, Minnesota, for Taxes for the Year 1955.

Table with columns: IN WHOSE NAME ASSESSED, TO WHOM TRANSFERRED, DESCRIPTION OF PROPERTY, TRUE AND FULL VALUATIONS, ASSESSED VALUATIONS, VALUATIONS BY SCHOOL DISTRICTS AS EQUALIZED BY DEPARTMENT OF TAXATION, SOLD FOR TAXES, PAID, WHEN PAID, Number of Receipt, March Settlement, June Settlement, November Settlement, Collections to First Monday in January 1957, Delinquent on First Monday in January 1957, Total Delinquent Tax and Penalty, REMARKS.

133-29 132-29 Village of Sylvan

133-30 Carlyon's Sylvan Park North Sylvan

Sylvan Shady Shores

Land & Allen's 2nd Add'n to Sylvan Beach

Sylvan Beach

Land & Allen's 1st Add'n to Sylvan Beach

Assessment Roll and Tax List of Real Property in the Town of Sylvan, Minn.

Cass County, Minnesota, for Taxes for the Year 1955.

Form 5C (55) MILLER-GAYN COMPANY, MINNEAPOLIS. *Indicate Type of Property: R-Residential, C-Commercial, I-Industrial, U-Utility, F-Farm #2

Table with columns: IN WHOSE NAME ASSESSED, TO WHOM TRANSFERRED, SUBDIVISION, ACRES, DESCRIPTION OF PROPERTY, TRUE AND FULL VALUATIONS, ASSESSED VALUATIONS, FINAL EQUALIZED VALUE, and various tax calculation columns.

Table with columns: VALUATIONS BY SCHOOL DISTRICTS AS EQUALIZED BY DEPARTMENT OF TAXATION, Tax including State Homestead, State Tax on Non-Homestead, SPECIAL TAXES, TOTAL TAXES, PAID, WHEN PAID, Number of Receipt, March Settlement, June Settlement, November Settlement, Collections to First Monday, Delinquent on First Monday, Total Delinquent Tax and Penalty, and REMARKS.

133-29 132-29 Village of Sylvan

133-30 Sylvan Park North Sylvan

Sylvan Beach

Sylvan Shady Shores

Land & Allen's 2nd Add'n to Sylvan Beach

Land & Allen's 1st Add'n to Sylvan Beach

Assessment Roll and Tax List of Real Property in the Town of Sylvan, Minnesota

Cass County, Minnesota, for Taxes for the Year 1955.

Table with columns: IN WHOSE NAME ASSESSED, TO WHOM TRANSFERRED, SUBDIVISION, DESCRIPTION OF PROPERTY, TRUE AND FULL VALUATIONS, ASSESSED VALUATIONS, FINAL EQUALIZED VALUE.

Table with columns: VALUATIONS BY SCHOOL DISTRICTS AS EQUALIZED BY DEPARTMENT OF TAXATION, TAX INCLUDING STATE HOMESTEAD, SPECIAL TAXES, TOTAL TAXES, PAID, WHEN PAID, Number of Receipt, March Settlement, June Settlement, Penalty, November Settlement, Collections to First Monday in January 1957, Delinquent on First Monday in January 1957, Total Delinquent Tax and Penalty, REMARKS.

133-29 132-29 Village of Sylvan
133-30 Sylvan Park North Sylvan
Sylvan Beach
Land & Allen's 1st Addn to Sylvan Beach

Sylvan Shady Shores
Land & Allen's 2nd Addn to Sylvan Beach
Land & Allen's 3rd Addn to Sylvan Beach

Assessment Roll and Tax List of Real Property in the Town of Sylvan, Minnesota

*Indicate Type of Property: R-Residential, C-Commercial, I-Industrial, U-Utility, F-Farm

Cass County, Minnesota, for Taxes for the Year 1955.

Table with columns: IN WHOSE NAME ASSESSED, TO WHOM TRANSFERRED, DESCRIPTION OF PROPERTY, TRUE AND FULL VALUATIONS (RURAL, ALL OTHER, MACHINERY), and FINAL EQUALIZED VALUE.

Table with columns: VALUATIONS BY SCHOOL DISTRICTS AS EQUALIZED BY DEPARTMENT OF TAXATION, TAXES (SOLD FOR TAXES, District, Rate, Mills), PAID, WHEN PAID, Number of Receipt, March Settlement, June Settlement, November Settlement, Collections to First Monday in January 1957, Delinquent on First Monday in January 1957, Total Delinquent Tax and Penalty, and REMARKS.

Vertical text on the left margin: 133-29 132-29, Village of Sylvan, Sylvan Shady Shores, 133-30, Sylvan Park North Sylvan, Sylvan Beach, Land & Allen's 1st Add'n to Sylvan Beach.

Vertical text on the right margin: Land & Allen's 2nd Add'n to Sylvan Beach, Land & Allen's 3rd Add'n to Sylvan Beach.

Assessment Roll and Tax List of Real Property in the Town of Sylvan of Sylvan

Form 5C (55) HILLIS-BAYNE COMPANY, MINNEAPOLIS

*Indicate Type of Property: R-Residential, C-Commercial, I-Industrial, U-Utility, F-Farm

Table with columns: IN WHOSE NAME ASSESSED, TO WHOM TRANSFERRED, DESCRIPTION OF PROPERTY, TRUE AND FULL VALUATIONS, ASSESSED VALUATIONS, FINAL EQUALIZED VALUE. Includes handwritten entries for Sylvan Shady Shore and Newberg in the Court.

Cass County, Minnesota, for Taxes for the Year 1955.

Table with columns: SOLD FOR TAXES, VALUATIONS BY SCHOOL DISTRICTS AS EQUALIZED BY DEPARTMENT OF TAXATION, TAX INCLUDING STATE HOMESTEAD, SPECIAL TAXES, TOTAL TAXES, PAID, WHEN PAID, Number of Receipt, March Settlement 1956, June Settlement 1956, November Settlement 1956, Collections to First Monday in January 1957, Delinquent on First Monday in January 1957, Total Delinquent Tax and Penalty, REMARKS. Includes handwritten notes like 'Penalty' and 'PAID IN FULL'.

133-29 132-29 Village of Sylvan Sylvan Shady Shore
133-30 North Sylvan
Sylvan Park
Sylvan Beach
Land & Allen's 1st Add'n to Sylvan Beach

Land & Allen's 2nd Add'n to Sylvan Beach
Land & Allen's 3rd Add'n to Sylvan Beach

Assessment Roll and Tax List of Real Property in the Town of Sylvan of Seymour County, Minnesota

*Indicate Type of Property: R-Residential, C-Commercial, I-Industrial, U-Utility, F-Farm

IN WHOSE NAME ASSESSED	TO WHOM TRANSFERRED	DESCRIPTION OF PROPERTY					TRUE AND FULL VALUATIONS										FINAL EQUALIZED VALUE	
		SUBDIVISION	Sec. of Lot	Town or Block	Rdg	Number of Acres of Land	LAND Exclusive of Structures and Improvements	BUILDINGS and Other Structures	MACHINERY Permanently Attached to Real Estate	TOTAL True and Full Value	RURAL		ALL OTHER		MACHINERY Permanently Attached to Real Estate	TOTAL ASSESSED VALUE		Total Assessed Value as Equalized by the Board of Review
											Acres	100ths	Homestead Up to \$4,000 20%	Over \$4,000 and Non-Homestead 33 1/3%				
John R. McWhirter		Sylvan Shady Shores	15	2														
"	"		16															
"	"		17															
"	"		18															
F. D. + Florence Schmidt			19															
Elmer E. Erickson			20															
Anton Yogi + Florene Yogi			21															
William S. Stans			1	3														
"	"		2															
Elmer E. Erickson			3															
Steve Smykle + H.C. Elfert			4															
Ruth Paulis + J.E. Wagner			5															
Hubert J. Johnston			6															
Hanson S. + Gladys H. Anderson			7															
Fred + Florence Schmidt			8															
Ernest + Eva Mae Munson			9															
William Keck			10															
Jack M. + Leonard J. Dunham			11															
Herbert W. Fortner			12															
Geo. B. Wilson + Emma D. Wilson			13															

Cass County, Minnesota, for Taxes for the Year 1955.

SOLD FOR TAXES	VALUATIONS BY SCHOOL DISTRICTS AS EQUALIZED BY DEPARTMENT OF TAXATION						Tax including State Homestead	State Tax on Non-Homestead	SPECIAL TAXES	TOTAL TAXES	PAID	WHEN PAID	Number of Receipt	March Settlement 1956	June Settlement 1956	Penalty	November Settlement 1956	Penalty	Collections to First Monday in January 1957	Penalty	Delinquent on First Monday in January 1957	Total Delinquent Tax and Penalty	REMARKS
	District No.	District Rate	District No.	District Rate	District No.	District Rate																	
	Dollars	Dollars	Dollars	Dollars	Dollars	Dollars																	
1							68		68	1	PAID IN FULL	MAY 31 1956											
2							68		68	2	PAID IN FULL	MAY 31 1956	8842		2 72								
3							68		68	3	PAID IN FULL	MAY 31 1956											
4							68		68	4	PAID IN FULL	MAY 31 1956											
5							68		68	5	PAID IN FULL	MAY 31 1956	8536		68								
6							68		68	6											688.75		
7							68		68	7											658.75		
8							68		68	8	2nd Half Paid	JUN 2 1 1956	8452			11 08							
9							2100	48	2148	9	1st Half Paid	MAY 31 1956	8828										
10							296	06	302	10											3 02		
11							2284	52	2336	11	PAID IN FULL	MAY 31 1956	8871			23 36							
12							1210		1210	12											12 10		
13							1256		1256	13	PAID IN FULL	OCT 31 1956	15091			12 56	44						
14							1826	42	1868	14	PAID IN FULL	OCT 31 1956	15076			18 68	47						
15							3038	68	3106	15	PAID IN FULL	MAY 31 1956	8836			31 06							
16							1712	38	1750	16	PAID IN FULL	MAY 31 1956	8838			17 50							
17							1712	38	1750	17	Balance Paid	JAN 30 1956	1805			30							
18							1622	36	1658	18	PAID IN FULL	MAY 31 1956	8834			16 58							
19							1896	42	1938	19	PAID IN FULL	JAN 24 1956	280			19 58							
20							1896	42	1938	20	PAID IN FULL	MAY 31 1956	11867			19 38							
							21392	412	21804							36 88	122 36			42 32		16 48	

133-29 132-29 Village of Sylvan Sylvan Shady Shores
133-30 Sylvan Park North Sylvan
Sylvan Beach
Land & Allen's 1st Addn. to Sylvan Beach
Land & Allen's 2nd Addn. to Sylvan Beach
Land & Allen's 3rd Addn. to Sylvan Beach

Assessment Roll and Tax List of Real Property in the Town of Sylvan, Minnesota

Cass County, Minnesota, for Taxes for the Year 1955.

Form 50 (55) WILSON-BATH COMPANY, MINNEAPOLIS

*Indicate Type of Property: R-Residential, C-Commercial, I-Industrial, U-Utility, F-Farm

Table with columns: IN WHOSE NAME ASSESSED, TO WHOM TRANSFERRED, SUBDIVISION, TRUE AND FULL VALUATIONS, ASSESSED VALUATIONS, VALUATIONS BY SCHOOL DISTRICTS AS EQUALIZED BY DEPARTMENT OF TAXATION, TAXES, PAID, WHEN PAID, etc.

133-29 132-29

133-30

Village of Sylvan, Sylvan Shady Shores, Sylvan Park North Sylvan, Sylvan Beach

Land & Allen's 1st Add'n to Sylvan Beach

Land & Allen's 2nd Add'n to Sylvan Beach

Land & Allen's 3rd Add'n to Sylvan Beach

Assessment Roll and Tax List of Real Property in the Town of Sylvan, Minnesota

Cass County, Minnesota, for Taxes for the Year 1955.

Table with columns: IN WHOSE NAME ASSESSED, TO WHOM TRANSFERRED, SUBDIVISION, Sec. or Lot, Town or Block, Range, Number of Acres of Land, No. School District, Indicate Homestead, Indicate Agricultural, Indicate Type of Property, TRUE AND FULL VALUATIONS (LAND, BUILDINGS, MACHINERY, TOTAL), ASSESSED VALUATIONS (RURAL, ALL OTHER, MACHINERY, TOTAL ASSESSED), Total Assessed Value as Equalized by the Board of Review, FINAL EQUALIZED VALUE.

Table with columns: SOLD FOR TAXES, VALUATIONS BY SCHOOL DISTRICTS AS EQUALIZED BY DEPARTMENT OF TAXATION (District No., Rate, Mills), Tax including State Homestead, State Tax on Non-Homestead, SPECIAL TAXES, TOTAL TAXES, PAID, WHEN PAID (Month, Day, Year), Number of Receipt, March Settlement 1956, June Settlement 1956, Penalty, November Settlement 1956, Penalty, Collections to First Monday in January 1957, Penalty, Delinquent on First Monday in January 1957, Total Delinquent Tax and Penalty, REMARKS.

133-29 132-29 Village of Sylvan Sylvan Shady Shores
133-30 Sylvan Park North Sylvan Land & Allen's 2nd Add'n to Sylvan Beach
Sylvan Beach
Land & Allen's 1st Add'n to Sylvan Beach

Land & Allen's 3rd Add'n to Sylvan Beach

Assessment Roll and Tax List of Real Property in the Town of Sylvan,
*Indicate Type of Property: R-Residential, C-Commercial, I-Industrial, U-Utility, F-Farm

Form 5C (55) MILLER-BAYNE COMPANY, MINNEAPOLIS

133-29 132-29
Wallace of Sylvan
Sylvan Shady Shores
133-30
Sylvan Park North Sylvan
Land & Allen's 2nd
Add'n to Sylvan Beach
Sylvan Beach
Land & Allen's 1st
Add'n to Sylvan Beach

IN WHOSE NAME ASSESSED	TO WHOM TRANSFERRED	DESCRIPTION OF PROPERTY					TRUE AND FULL VALUATIONS											FINAL EQUALIZED VALUE
		SUBDIVISION	Sec. or Lot	Town or Block	Rug	Number of Acres of Land	LAND Exclusive of Structures and Improvements	BUILDINGS and Other Structures	MACHINERY Permanently Attached to Real Estate	RURAL		ALL OTHER		MACHINERY Permanently Attached to Real Estate	TOTAL ASSESSED VALUE	Total Assessed Value as Equalized by the Board of Review		
										Acres	100ths	Homestead Up to \$4,000 20%	Over \$4,000 and Non-Homestead 33 1/3%				Homestead Up to \$1,000 25%	
Raymond + Katherine Herron		Land & Allen's 2nd addition to Sylvan Beach	20															
"	"	"	21															
Victor L. + Vera H. Lohmann		"	22															
Vermon A. + Ruth E. Olson		"	23															
Frank + Alice M. Allen		"	24															
"	"	"	25															
Earl M. + Alice J. Nelson		"	26															
"	"	"	27															
"	"	"	28															
"	"	"	29															

Cass County, Minnesota, for Taxes for the Year 1955.

SOLD FOR TAXES	VALUATIONS BY SCHOOL DISTRICTS AS EQUALIZED BY DEPARTMENT OF TAXATION						Tax including State Homestead	State Tax on Non-Homestead	SPECIAL TAXES	TOTAL TAXES	PAID	WHEN PAID	Number of Receipt	March Settlement 1956	June Settlement 1956	Penalty 1956	November Settlement 1956	Penalty 1956	Collections to First Monday in January 1957	Penalty	Delinquent on First Monday in January 1957	Total Delinquent Tax and Penalty	REMARKS
	District No.	District No.	District No.	District No.	District No.	District No.																	
	Rate	Rate	Rate	Rate	Rate	Rate																	
1						47	956	24	980	1	PAID IN FULL MAY 31 1956	8851		1084									
2						5	102	02	104	2	PAID IN FULL MAY 31 1956												
3						5	102	02	104	3	PAID IN FULL MAY 31 1956	7557		104									
4						85	1728	44	1772	4	PAID IN FULL MAY 31 1956			1772									
5						5	102	02	104	5	PAID IN FULL MAY 17 1956	6639		104									
6						5	102	02	104	6	PAID IN FULL MAY 17 1956			104									
7						5	102	02	104	7	PAID IN FULL MAY 31 1956												
8						6	102	02	104	8	PAID IN FULL MAY 31 1956	8850		2252									
9						93	1842	48	1940	9	PAID IN FULL MAY 31 1956												
10						5	102	02	104	10	PAID IN FULL MAY 31 1956												
11																							
12																							
13																							
14																							
15																							
16																							
17																							
18																							
19																							
20																							
							260		5290	130		5420											

Land & Allen's 3rd Add'n to Sylvan Beach

Assessment Roll and Tax List of Real Property in the Town of Sylvan, Cass County, Minnesota, for Taxes for the Year 1955.

Form 5C (55) WILSON-DAVIS COMPANY, MINNEAPOLIS

Table with columns: IN WHOSE NAME ASSESSED, TO WHOM TRANSFERRED, SUBDIVISION, Sec. or Lot, Town or Block, Ring, Number of Acres of Land, TRUE AND FULL VALUATIONS (LAND, BUILDINGS, MACHINERY, TOTAL), ASSESSED VALUATIONS (RURAL, ALL OTHER, MACHINERY, TOTAL), FINAL EQUALIZED VALUE.

Table with columns: SOLD FOR TAXES, VALUATIONS BY SCHOOL DISTRICTS AS EQUALIZED BY DEPARTMENT OF TAXATION (District No., Rate, etc.), Tax including State Homestead, State Tax on Non-Homestead, SPECIAL TAXES, TOTAL TAXES, PAID, WHEN PAID, Number of Receipt, March Settlement, June Settlement, Penalty, November Settlement, Penalty, Collections to First Monday in January 1957, Delinquent on First Monday in January 1957, Total Delinquent Tax and Penalty, REMARKS.

Vertical text on the left margin: 133-29, 133-30, Sylvan Shady Shores, Sylvan Park North Sylvan, Land & Allen's 2nd Add'n to Sylvan Beach, Sylvan Beach, Land & Allen's 3rd Add'n to Sylvan Beach.

Assessment Roll and Tax List of Real Property in the Town of Sylvan, Cass County, Minnesota, for Taxes for the Year 1955.

Form 5C (55) WILSON-JAY COMPANY, MINNEAPOLIS

Table with columns: IN WHOSE NAME ASSESSED, TO WHOM TRANSFERRED, SUBDIVISION, Sec. or Lot, Town or Block, Range, Number of Acres of Land, TRUE AND FULL VALUATIONS, ASSESSED VALUATIONS, FINAL EQUALIZED VALUE.

Total Acres 18120/10

Cass County, Minnesota, for Taxes for the Year 1955.

Table with columns: SOLD FOR TAXES, VALUATIONS BY SCHOOL DISTRICTS AS EQUALIZED BY DEPARTMENT OF TAXATION, Tax including State Homestead, State Tax on Non-Homestead, SPECIAL TAXES, TOTAL TAXES, PAID, WHEN PAID, Number of Receipt, March Settlement 1956, June Settlement 1956, November Settlement 1956, Collections to First Monday in January 1957, Delinquent on First Monday in January 1957, Total Delinquent Tax and Penalty, REMARKS.

Assessment Roll and Tax List of Real Property in the _____ of _____

*Indicate Type of Property: R-Residential, C-Commercial, I-Industrial, U-Utility, F-Farm

Form 5C (55) MILLER-BAYNE COMPANY, MINNEAPOLIS

IN WHOSE NAME ASSESSED	TO WHOM TRANSFERRED	DESCRIPTION OF PROPERTY				No. School District	Indicate Homestead Yes or No	Indicate Agricultural Yes or No	Indicate Type of Property	TRUE AND FULL VALUATIONS					ASSESSED VALUATIONS					Total Assessed Value as Equalized by the Board of Review	FINAL EQUALIZED VALUE	
		SUBDIVISION	Sec. or Lot	Town or Block	Rng.					Number of Acres of Land Acres 100ths	LAND Exclusive of Structures and Improvements	BUILDINGS and Other Structures	MACHINERY Permanently Attached to Real Estate	TOTAL True and Full Value	RURAL		ALL OTHER		MACHINERY Permanently Attached to Real Estate			TOTAL ASSESSED VALUE
															Homestead Up to \$4,000 20%	Over \$4,000 and Non-Homestead 33 1/3%	Homestead Up to \$4,000 25%	Over \$4,000 and Non-Homestead 40%				
Dollars	Dollars	Dollars	Dollars	Dollars	Dollars	Dollars	Dollars	Dollars	Dollars	Dollars	Dollars	Dollars	Dollars	Dollars	Dollars	Dollars						
1																						
2																						
3																						
4																						
5																						
6																						
7																						
8																						
9																						
10																						
11																						
12																						
13																						
14																						
15																						
16																						
17																						
18																						
19																						
20																						

Cass County, Minnesota, for Taxes for the Year 1955.

No¹ No² No¹ No²

SOLD FOR TAXES	VALUATIONS BY SCHOOL DISTRICTS AS EQUALIZED BY DEPARTMENT OF TAXATION					Tax including State Homestead Mills	State Tax on Non-Homestead <i>5.11</i> Mills	SPECIAL TAXES	TOTAL TAXES	PAID	WHEN PAID Month Day Year	Number of Receipt	March Settlement 1956	June Settlement 1956	Penalty 1956	November Settlement 1956	Penalty 1956	Collections to First Monday in January 1957	Penalty 1957	Delinquent on First Monday in January 1957	Total Delinquent Tax and Penalty	REMARKS
	District No.	District No.	District No.	District No.	District No.																	
	Rate Mills	Rate Mills	Rate Mills	Rate Mills	Rate Mills																	
1																						
2																						
3																						
4																						
5																						
6																						
7																						
8																						
9																						
10																						
11																						
12																						
13																						
14																						
15																						
16																						
17																						
18																						
19																						
20																						

11 WA 1 211754
 12 WA 1 939610
 13 WA 2 767284
 14 WA 2 1097862
 15 3016510 3077948
 16 Grand Totals 2659 14922 - 885 18476
 17 WA 7805 22798 41322 47193 = 119123
 18 10464 - 37920 41227 48078 = 137549

614.88

132-29 133-30
 Sylvan Shady Shores
 Sylvan Park North Sylvan
 Sylvan Beach
 Land & Allen's 2nd Add'n to Sylvan Beach
 Land & Allen's 3rd Add'n to Sylvan Beach