

ASSESSMENT & TAX LIST

Sylvan

1948





SUMMARY OF TAX COLLECTION

Original Levy - - - - - \$27,667.24  
 Additions - - - - - \$ 3.74  
 Abatements - - - - - \$ 49.84  
 CANCELLATIONS - - - - - \$ 10,865.00  
 \$ 27,512.79

COLLECTIONS

March Settlement - - - - - \$1,222.22  
 June Settlement - - - - - \$13,472.02  
 November Settlement - - - - - \$11,076.65  
 January Settlement - - - - - \$ 197.76  
 Over Collected - - - - - \$ 23.44  
 Under Collected - - - - - \$  
 Delinquent - - - - - \$1,567.25  
 Total - - - - - \$27,512.79

135-29  
 REAL  
 Village of Sylva  
 North Sylva  
 Sylva Shady Grove

Treasurer's Office, Cass County, Minnesota

RECEIVED this, the first Monday (being the 3rd day) of January, A. D. 1949, of L. C. Peterson, Auditor of said County, Minnesota, the Tax List of all Taxable Real and Personal Property in the Town of Sylvan in said County for the year A. D. 1948, as specified above and amounting to 100 Dollars

Paul D. Jewell  
County Treasurer.

Auditor's Office, Cass County, Minnesota

I, \_\_\_\_\_ Auditor of said County, and State of Minnesota, do hereby certify that the following is a correct list of the Taxes levied on the Real and Personal Property in the \_\_\_\_\_ of \_\_\_\_\_ for the year 1948.

WITNESS my hand and official seal, the \_\_\_\_\_ day of \_\_\_\_\_ 1949.

(SEAL) \_\_\_\_\_ County Auditor.

Office of County Treasurer, Cass County, Minnesota

To L. C. Peterson, County Auditor:

Sir: I herewith return to you the Tax List for the Town of Sylvan in said County for the year 1948, heretofore received from you. I certify that I have compared the same with the duplicate receipts in your office, and have written opposite the amount of each tax so received the words "First Quarter Paid", "Second Quarter Paid", "Third Quarter Paid" or "Paid in full" as the case may be, and the number of my receipt given in discharge of all tax, and each tract or lot of real property against which the taxes remain unpaid is delinquent for said year.

Yours respectfully,  
Paul D. Jewell  
County Treasurer.

Auditor's Office, Cass County, Minnesota

I hereby certify that on the first Monday in January 1950, I received of \_\_\_\_\_ County Treasurer, the Tax List of the \_\_\_\_\_ of \_\_\_\_\_ in said County for the year 1948; that I have compared the said list with the Statements received for by said Treasurer, which are on file in my office, and that each tract or lot of real property therein against which the taxes, or any part thereof, remains unpaid are delinquent for said year.

(SEAL) \_\_\_\_\_ County Auditor.

January 2 1950

Lawyer's Sylvan Park  
133-29  
REAL  
-30  
Village of Sylvan  
North Sylvan Lake  
Sylvan Shady Shores

TABULAR SCHEDULE OF VALUATIONS,

LEVIED IN THE Township of Sylvan COUNTY OF CASS, STATE OF MINNESOTA

RATES AND TAXES

COUNTY OF CASS, STATE OF MINNESOTA

VALUATION BY SCHOOL DISTRICTS				RATE OF STATE TAXES	RATE OF COUNTY TAXES										RATE OF TOWN TAXES										RATE OF SCHOOL TAXES	TAXES LEVIED									
School District No.	Agricultural Lands	Non-Agricultural Lands	Personal Property	Total Value of all Property except Money and Credits	Total Rate of State Tax	Rev.	R. & B.	Welfare	Bonds and Int.	Skp.	Total Rate of County Tax	Rev.	R. & B.	Drag Tax	State Loan	Total Rate of Town Tax	Local	Special	State Loan	Deficiency	Tuition	Transportation	C.O.	Total Rate of Sch'l Tax	Total Rate of all Taxes	LOCAL 1 MILL AND SPECIAL SCHOOL TAXES BY DISTRICTS					ALL OTHER TAXES				
																										Local 1 Mill	Special	State Loan	Def.	Tuition	C.O.	Total School Taxes	FUNDS	Rate	Amounts
1	36356	44353	5539	86248	H. 2.91	2.24	7.2	48.5	7.9	6.5	93.5	1.5	15.	1.		17.5	1.	30.	40.3	1.8	12.5			85.6	199.51	3636	109072	146514	6544	45446	311211	State-Non-Homestead,	39060		
13	47551		430	47981													1.	60.	40.3	1.8	12.5			115.6	229.51	4989	299358	2010.68	8980	62365	576760	State-Homestead,	43628		
	83907	44353	5969	134229	N.H. 3.86																														
					6.77																														
Assessed Value	Rural	All Other	Personal Property	Total																															
Homestead	21177			21177																															
Non-Homestead	107,083		5969	113052																															
Total	128,260		5969	134229																															

199.51 / 3.86 = 51.43  
 229.51 / 3.86 = 59.46  
 177.71 / 3.86 = 45.78

Total Levied, \$ 27,667.  
 Total Number of Acres 18,666.  
 State of Minnesota, ss  
 COUNTY OF CASS  
 Auditor of said County and State aforesaid, do hereby certify that the foregoing is a true and correct Schedule, showing the valuation of all the taxable property, in the Township of Sylvan, in said County, the several rates of Taxation and Totals of the several Tax Funds levied thereon for the year A. D. 1928.  
 Witness my hand and official seal, this 10 day of Dec A. D. 1928.  
 J. C. Peterson County Auditor.

Total Taxes Real Estate 26,296.32  
 Pers. Prop. 1,370.92  
 Total 27,667.24

REAL  
 135-29  
 Village of Sylvan  
 North Sylvan Lake  
 Sylvan Study Shore

FUNDS	MARCH SETTLEMENT 19.49	JUNE SETTLEMENT 19.49	NOV. SETTLEMENT 19.49	Amount Collected from Nov. 1944 to First Monday in Jan. 1949	REDUCTIONS	Total Reductions and Collected	BALANCE UNCOLLECTED	ADDITIONS	Total Uncollected to First Monday in January, 19.....
State—Non-Homestead,	1889	20704	18258	236					
State—Homestead,	1553	19104	15667	278					
County Revenue,	12486	153621	125979	2235					
County Road and Bridge,	3842	47268	38763	688					
County Welfare,	25878	318403	261111	4632					
County Bond and Interest,	4215	51864	42533	754					
SKg.	3468	42676	34994	621					
Town Revenue,	800	9848	8075	143					
Town Road and Bridge,	8004	98475	80756	1433					
Town Drag,	534	6565	5384	96					
Town State Loan,									
School Local 1 Mill,	534	6566	5382	95					
School Special,	30227	304743	259551	3352					
School State Loan,									
Deficiency	20833	169475	130478	3848					
Tuition	236	33507	9691						
Transportation	961	11816	40471	192					
G.O.	6462	52567	30474	1192					
	122222	1347202	1107668	19776					

	LOCAL 1 MILL	SPECIAL	STATE LOAN	Supp.	Transp.	G.O.	Dist.	TOTALS
MARCH SETTLEMENT								
School District No. A-1	42	1265		1701	76	528		3612
" "na-1	475	28485		19132	855	5734		54881
" "13	17	777			30		236	1060
Totals	534	30227		20833	961	6462	236	59553
JUNE SETTLEMENT								
School District No. A-1	1934	5806		77921	3480	24169		165510
" "na-1	2272	138304		91554	4889	28398		262617
" "13	2360	110432			4249		33507	150547
Totals	6566	304743		169475	11816	52567	33507	578674
NOVEMBER SETTLEMENT								
School District No. A-1	1171	35144		47210	2109	14643		100277
" "na-1	2066	123972		83268	3719	23728		238853
" "13	2146	100435			3863		30474	136918
Totals	5383	259551		130478	9691	40471	30474	476048
NOVEMBER to JANUARY								
School District No. A-1	79	2379		3196	143	991		6788
" "na-1	16	993		652	29	202		1872
Totals	95	3352		3848	172	1193		8660
ADDITIONS								
School District No.								
Totals								
REDUCTIONS								
School District No.								
Totals								

REAL ESTATE  
 VILLAGE OF SYLVAN  
 North Sylvan Lake  
 Sylvan Shady Shores  
 133-29  
 130





Assessment Roll and Tax List of Real Property in the Town of Sylvan

Table with columns: IN WHOSE NAME ASSESSED, TO WHOM TRANSFERRED, DESCRIPTION OF PROPERTY, TRUE AND FULL VALUATIONS, ASSESSED VALUATIONS, VALUATIONS BY SCHOOL DISTRICTS AS EQUALIZED BY DEPARTMENT OF TAXATION, TAXES, PAID, WHEN PAID, Number of Receipt, March Settlement 1949, June Settlement 1949, November Settlement 1949, Collections to First Monday in January 1950, Delinquent on First Monday in January 1950, Total Delinquent Tax and Penalty, REMARKS.

135-29  
132-29  
Village of Sylvan  
North Sylvan Lake  
Sylvan Shady Shores







Assessment Roll and Tax List of Real Property in the Town of Sylvan,

Cass County, Minnesota, for Taxes for the Year 1948.

IN WHOSE NAME ASSESSED	TO WHOM TRANSFERRED	DESCRIPTION OF PROPERTY				TRUE AND FULL VALUATIONS		ASSESSED VALUATIONS						FINAL EQUALIZED VALUE	SOLD FOR TAXES	VALUATIONS BY SCHOOL DISTRICTS AS EQUALIZED BY DEPARTMENT OF TAXATION						Tax including State Homestead Mills	State Tax on Non-Homestead 38c Mills	SPECIAL TAXES	TOTAL TAXES	PAID	WHEN PAID	Number of Receipt	March Settlement 1949	June Settlement 1949	Penalty	November Settlement 1949	Penalty	Collections to First Monday in January 1950	Penalty	Delinquent on First Monday in January 1950	Total Delinquent Tax and Penalty	REMARKS						
		SUBDIVISION	Sec. or Lot	Town or Block	Rng.	Number of Acres of Land	LAND Exclusive of Structures and Improvements	BUILDINGS and Other Structures	MACHINERY Permanently Attached to Real Estate	TOTAL True and Full Value	RURAL		ALL OTHER			MACHINERY Permanently Attached to Real Estate	TOTAL ASSESSED VALUE	Total Assessed Value as Equalized by the Board of Review	District No.	District Rate	District No.																		District Rate	District No.	District Rate	District No.	District Rate	
											Up to \$4,000 20%	Over \$4,000 and Non-Homestead 33 1/3%	Up to \$4,000 25%																															Over \$4,000 and Non-Homestead 40%
Emily & John Peterson	State of Minnesota	NE 1/4 of NE 1/4	8	13329	40	70	230	230	46				46			1	H 46						918												918 out									
Miss. Power & Light Co.		NW 1/4 of NE 1/4			40	70	321	321	107				107			2	H 107						2134	42	2176																			
"		SW 1/4 of NE 1/4			40	"	321	321	107				107			3	H 107						2134	42	2176																			
"		SE 1/4 of NE 1/4			40	"	321	321	107				107			4	H 107						2134	42	2176																			
Frank Satter		NE 1/4 of NW 1/4			40	70	510	895	179				179			6	H 179						3572		3572																			
"		NW 1/4 of NW 1/4			40	"	280	280	56				56			7	H 56						1118		1118																			
"		SW 1/4 of NW 1/4 less 17 ac.			63	"	450	450	90				90			8	H 90						1796		1796																			
"		SE 1/4 of NW 1/4														9																												
Miss. Power & Light Co.		NE 1/4 of SW 1/4			40	70	321	321	107				107			11	H 107						2134	42	2176																			
George Larson		SW 1/4 of SW 1/4 less 15 ac.			62	70	490	350	168				168			12	H 168						3352		3352																			
Miss. Power & Light Co.		SE 1/4 of SW 1/4			40	70	321	321	107				107			14	H 107						2134	42	2176																			
"		35 ac. of S 1/2 of NW 1/4 + W 1/2 of SW 1/4			35	"	279	279	92				92			15	H 92						1856	36	1892																			
O. H. Mc Aninch		NE 1/4 of SE 1/4			40	70	275	275	55				55			16	H 55						1098		1098																			
Miss. Power & Light Co.		NW 1/4 of SE 1/4			40	70	321	321	107				107			17	H 107						2134	42	2176																			
"		SW 1/4 of SE 1/4			40	"	321	321	107				107			18	H 107						2134	42	2176																			
O. H. Mc Aninch		SE 1/4 of SE 1/4			40	70	320	150	94				94			19	H 94						1876		1876																			
					640		5081	885	5966	688	842		1530			20	H 1530						#1 30524	330	30854		2974	18400		8567					915									

133-29

1st Caryon's Sylvan Park  
Village of Sylvan  
North Sylvan Lake  
Sylvan Study Shores

Assessment Roll and Tax List of Real Property in the Town of Sylvan

Table with columns: IN WHOSE NAME ASSESSED, TO WHOM TRANSFERRED, DESCRIPTION OF PROPERTY, TRUE AND FULL VALUATIONS, ASSESSED VALUATIONS, VALUATIONS BY SCHOOL DISTRICTS AS AUTHORIZED BY DEPARTMENT OF TAXATION, TAXES, PAID, WHEN PAID, Number of Receipt, March Settlement 1949, June Settlement 1949, November Settlement 1949, Collections to First Monday in January 1950, Delinquent on First Monday in January 1950, Total Delinquent Tax and Penalty, REMARKS.

132-29 132-29 VILLAGE OF SYLVAN North Sylvan Lake Sylvan Shady Shores

Assessment Roll and Tax List of Real Property in the Town of Sylvan

Table with columns: IN WHOSE NAME ASSESSED, TO WHOM TRANSFERRED, DESCRIPTION OF PROPERTY, TRUE AND FULL VALUATIONS, ASSESSED VALUATIONS, FINAL EQUALIZED VALUE, SOLD FOR TAXES, VALUATIONS BY SCHOOL DISTRICTS AS EQUALIZED BY DEPARTMENT OF TAXATION, SPECIAL TAXES, TOTAL TAXES, PAID, WHEN PAID, Number of Receipt, March Settlement 1949, June Settlement 1949, November Settlement 1949, Penalty, Collections to First Monday in January 1950, Delinquent on First Monday in January 1950, Total Delinquent Tax and Penalty, REMARKS.

A. B. Birdsall

Louis M. Stank & Carrie Peterson

State of Minnesota

Gibert B. + May Birdsall

Lawrence Laska

Mines. Power + Light Co.

Mines. Power + Light Co.

Philip J. Halzman

Mines. Power + Light Co.

Philip J. Halzman

Milton + Eileen Hradsky

Steven Kriz

Milton + Eileen Hradsky

592

4398 1040

5338 713 591

1304

1304

#1 26012 232

26244

1892 12460

7524

4368

133-29 133-29 Village of Sylvan North Sylvan Lake Sylvan Shady Shores











Assessment Roll and Tax List of Real Property in the Town of Sylvan

Cass County, Minnesota, for Taxes for the Year 1948.

Table with columns: IN WHOSE NAME ASSESSED, TO WHOM TRANSFERRED, DESCRIPTION OF PROPERTY, TRUE AND FULL VALUATIONS, ASSESSED VALUATIONS, VALUATIONS BY SCHOOL DISTRICTS AS EQUALIZED BY DEPARTMENT OF TAXATION, Tax including State Homestead, State Tax on Non-Homestead, SPECIAL TAXES, TOTAL TAXES, PAID, WHEN PAID, Number of Receipt, March Settlement 1949, June Settlement 1949, November Settlement 1949, Collections to First Monday in January 1950, Delinquent on First Monday in January 1950, Total Delinquent Tax and Penalty, REMARKS. Includes handwritten entries for 'Miss Bowen + Light Co.', 'J. F. + Ellen J. Marlow', and 'Clara M. + Charles V. McKinney, Jr.'.

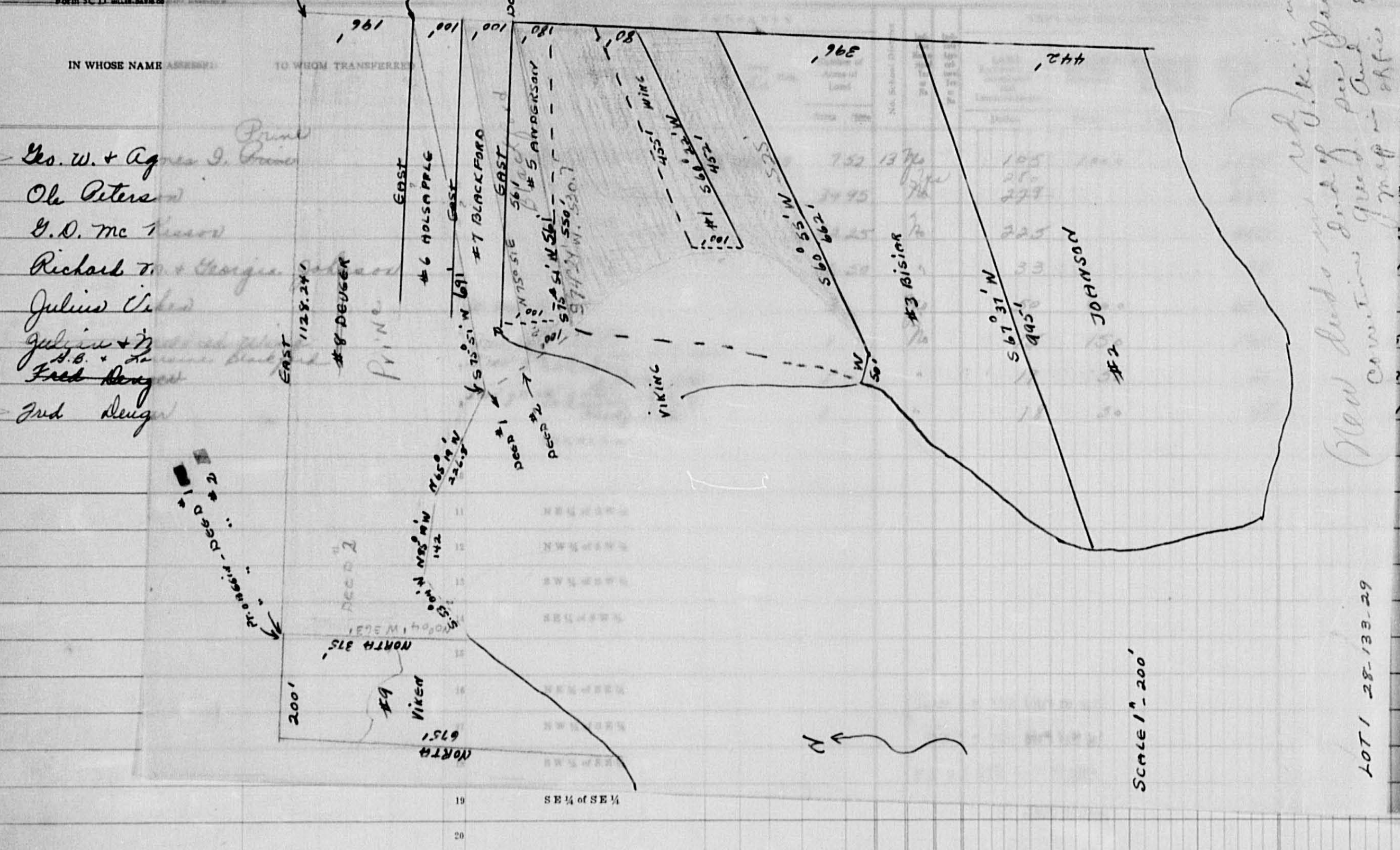
Vertical text on the right edge: 'La Carlyn's Sylvan Park', 'Village of Sylvan', 'North Sylvan Lake', 'Sylvan Shady Shores'.







Cass County, Minnesota, for Taxes for the Year 1948.



IN WHOSE NAME ASSESSED TO WHOM TRANSFERRED

Yes. W. + Agnes I. Brown  
 Ole Petersen  
 G.D. Mc  
 Richard T. + Georgia  
 Julius Ueber  
 Julius + Agnes  
 Fred Bengtson  
 Jrd. Deuger

*(Handwritten note: New deeds made of this property...)*

ASSESSED VALUATIONS				
ALL OTHER	MACHINERY	TOTAL	Total Assessed	FINAL
Homestead Up to \$4,000 25%	Over \$4,000 and Non- Homestead 40%	Permanently Attached to Real Estate 33 1/3%	ASSESSED VALUE	EQUALIZED VALUE
Dollars	Dollars	Dollars	Dollars	Dollars

VALUATIONS BY SCHOOL DISTRICTS AS EQUALIZED BY DEPARTMENT OF TAXATION					
District No.	District No. 1	District No. 12	District No. 2	District No. 13	District No.
Rate	Rate	Rate	Rate	Rate	Rate
Mills	Mills	Mills	Mills	Mills	Mills

SOLD FOR TAXES	VALUATIONS BY SCHOOL DISTRICTS AS EQUALIZED BY DEPARTMENT OF TAXATION						Tax including State Homestead	State Tax on Non-Homestead	SPECIAL TAXES	TOTAL TAXES	PAID	WHEN PAID	Number of Receipt	March Settlement 1949	June Settlement 1949	Penalty	November Settlement 1949	Penalty	Collections to First Monday in January 1950	Penalty	Delinquent on First Monday in January 1950	Total Delinquent Tax and Penalty	REMARKS
	Dollars	Dollars	Dollars	Dollars	Dollars	Dollars																	
1					11	221				3928													PAID IN FULL OCT 6 1948 12473
2					4	56				996													PAID IN FULL MAY 31 1949 1162
3					75	75				1332	28												PAID IN FULL MAY 31 1949 1162
4					11	11				196	04												PAID IN FULL MAY 31 1949 9756
5					130	130				2310													PAID IN FULL FEB 9 1949 1573 2310
6					55	55				978	22												PAID IN FULL MAY 31 1949 8713
7					23	23				408	08												PAID IN FULL MAY 31 1949 6927
8					16	16				284	06												PAID IN FULL MAY 31 1949 6927
9																							
10																							
11																							
12																							
13																							
14																							
15																							
16																							
17																							
18																							
19																							
20																							

8822 744 1830 2574 351 273 624  
 745 2575 407 180 587

#13-10432 68 10500 9810 2976 3928 1286

135-29 132-39  
 Village of Sylvan  
 Sylvan Shady Shores







Assessment Roll and Tax List of Real Property in the Town of Sylvan, 5489

Cass County, Minnesota, for Taxes for the Year 1948.

Table with multiple columns: IN WHOSE NAME ASSESSED, TO WHOM TRANSFERRED, DESCRIPTION OF PROPERTY (Subdivision, Sec. or Lot, Town or Block, Rng., Number of Acres of Land), TRUE AND FULL VALUATIONS (LAND, BUILDINGS, MACHINERY, TOTAL), ASSESSED VALUATIONS (RURAL, ALL OTHER, MACHINERY, TOTAL ASSESSED VALUE), FINAL EQUALIZED VALUE, VALUATIONS BY SCHOOL DISTRICTS AS EQUALIZED BY DEPARTMENT OF TAXATION (District No., Rate, Mills), Tax including State Homestead, State Tax on Non-Homestead, SPECIAL TAXES, TOTAL TAXES, PAID, WHEN PAID, Number of Receipt, March Settlement 1949, June Settlement 1949, Penalty, November Settlement 1949, Penalty, Collections to First Monday in January 1950, Penalty, Delinquent on First Monday in January 1950, Total Delinquent Tax and Penalty, REMARKS.

135-29

La Carlyon's Sylvan Park

Village of Sylvan

North Sylvan Lake

Sylvan Shady Shore

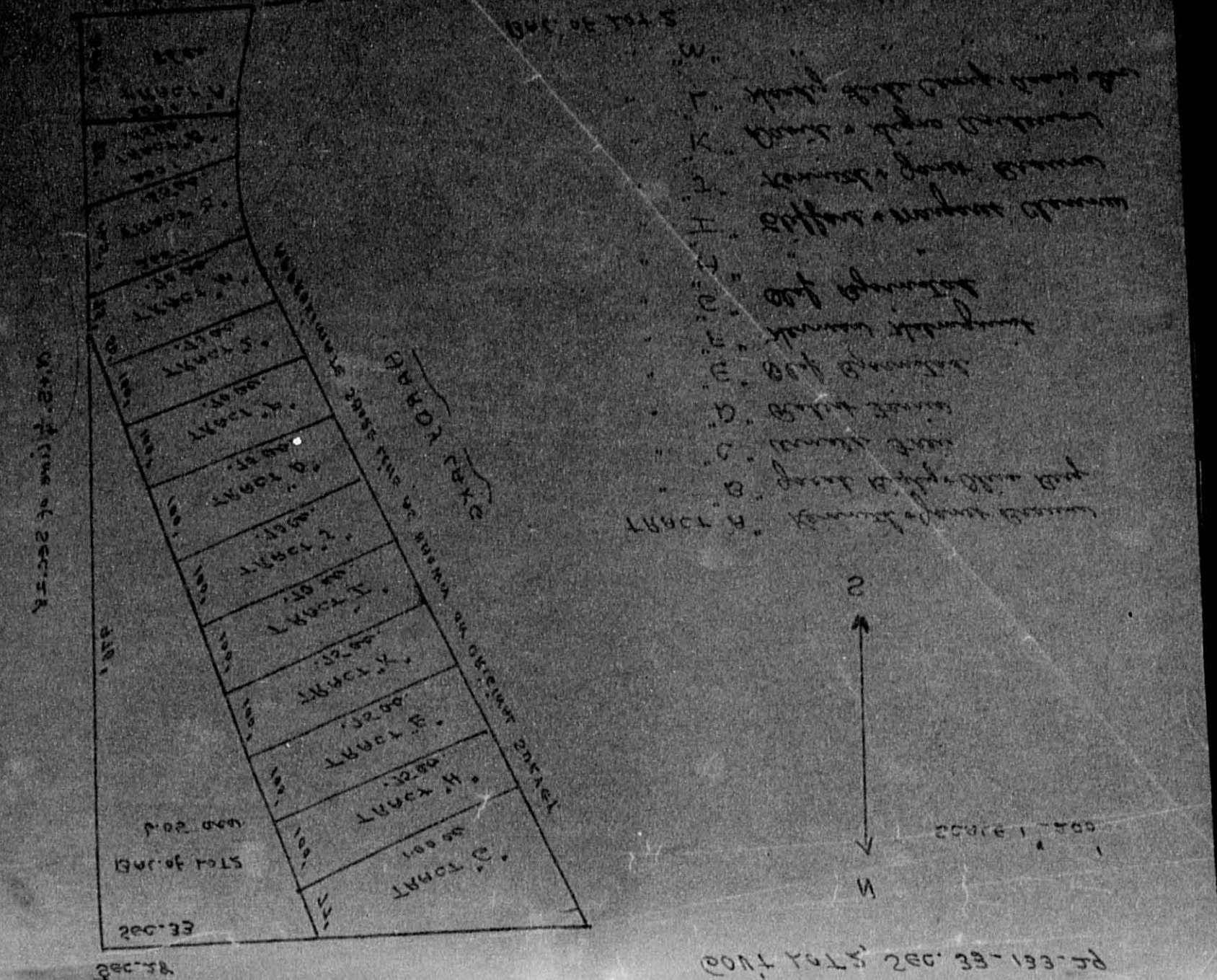






Assessment Roll and Tax List of Real Property in the Town of Sylvan,

Cass County, Minnesota, for Taxes for the Year 1948.



IN WHOSE NAME ASSESSED	TO WHOM TRANSFERRED	SUBDIVISION	Sec. or Lot	Town or Block	Reg.	Number of Acres of Land	TRUE AND FULL VALUATIONS					ASSESSED VALUATIONS						SOLD FOR TAXES	VALUATIONS BY SCHOOL DISTRICTS AS EQUALIZED BY DEPARTMENT OF TAXATION											REMARKS								
							LAND Exclusive of Structures and Improvements	BUILDINGS and Other Structures	MACHINERY Permanently Attached to Real Estate	TOTAL True and Full Value	RURAL		ALL OTHER		MACHINERY Permanently Attached to Real Estate	TOTAL ASSESSED VALUE	Total Assessed Value as Equalized by the Board of Review		Dollars	SCHOOL DISTRICTS					State Tax on Non-Homestead	SPECIAL TAXES	TOTAL TAXES	PAID	WHEN PAID		Number of Receipt	March Settlement 1949	June Settlement 1949	November Settlement 1949	Penalty	Collections to First Monday in January 1950	Delinquent on First Monday in January 1950	Total Delinquent Tax and Penalty
											Homestead Up to \$4,000 20%	Over \$4,000 and Non-Homestead 33 1/3%	Homestead Up to \$4,000 25%	Over \$4,000 and Non-Homestead 40%						No. 13	No. 14	No. 15	No. 16	No. 17														
Mary M. Shew	(TRACT A)	.55 ac. q. Lot 2	33	133	29	85	13	70	25	200	225	75	75	1																								
Lawrence W. + Idella Rosendahl		.55 ac. q. Lot 2				55	70		20	200	220	44	44	2																								
Wilho A. + Pearl J. Bjornstad	(TRACT "B")	.65 ac. q. Lot 2				65	70		12		12	4	4																									
Arnold Fredrik Bjornstad	(" C ")	.70 ac. q. "				70			12		12	4	4																									
Robert Juris	(" D ")	.75 ac. q. Lot 2				75			17	10	27	9	9																									
Olof Bjornstad	(" E ")	.70 ac. q. Lot 2				70			13	50	63	21	21																									
Norman Helmgren	(" F ")	1.00 ac. q. Lot 2				100			24		24	8	8																									
Olof Bjornstad	(" G ")	.75 ac. q. Lot 2				75			18		18	6	6																									
Clifford B. + Margaret E. Channer	(" H ")	.70 ac. q. Lot 2				70			12		12	4	4																									
Lawrence W. + Idella Rosendahl	(" J ")	.70 ac. q. Lot 2				70			12		12	4	4																									
David + Signe E. Andersson	(" K ")	.75 ac. q. Lot 2				75			18		18	6	6																									
Nardy Lake Camp Assoc., Inc.	(" L ")	.70 ac. q. Lot 2				70			20	160	180	60	60																									
"	(" M ")	.70 ac. q. Lot 2				70			12		12	4	4																									
"		Balcony q. Lot 2				535			54		54	18	18																									
		NE 1/4 of SE 1/4																																				
		NW 1/4 of SE 1/4																																				
		SW 1/4 of SE 1/4																																				
		SE 1/4 of SE 1/4																																				
(Cont on next page)						1485			267	620	889	44	223																									

(Cont on next page)

1485 267 620 889 44 223

267

47.48 88

4836

2100

2600

133-29 132-80  
Lafayette's Sylvan Park  
Village of Sylvan  
North Sylvan Lake  
Sylvan Study Shores





Assessment Roll and Tax List of Real Property in the Town of Sylvan

133-29 133-30

Table with columns: IN WHOSE NAME ASSESSED, TO WHOM TRANSFERRED, DESCRIPTION OF PROPERTY, TRUE AND FULL VALUATIONS, ASSESSED VALUATIONS, FINAL EQUALIZED VALUE. Includes handwritten entries for lots 1-20 and a large handwritten note for lot 1.

Cass County, Minnesota, for Taxes for the Year 1948.

Lat. Car. 1948's Sylvan Park Village of Sylvan North Sylvan Shady Shores

Table with columns: SOLD FOR TAXES, VALUATIONS BY SCHOOL DISTRICTS AS EQUALIZED BY DEPARTMENT OF TAXATION, SPECIAL TAXES, TOTAL TAXES, PAID, WHEN PAID, Number of Receipt, March Settlement 1949, June Settlement 1949, November Settlement 1949, Collections to First Monday in January 1950, Delinquent on First Monday in January 1950, Total Delinquent Tax and Penalty, REMARKS. Includes handwritten entries for lots 1-20 and a large handwritten note for lot 5.

Assessment Roll and Tax List of Real Property in the Town of Sylvan

Cass County, Minnesota, for Taxes for the Year 1948.

Table with columns: IN WHOSE NAME ASSESSED, TO WHOM TRANSFERRED, DESCRIPTION OF PROPERTY, TRUE AND FULL VALUATIONS (LAND, BUILDINGS, MACHINERY), ASSESSED VALUATIONS (RURAL, ALL OTHER, MACHINERY), FINAL EQUALIZED VALUE.

Table with columns: VALUATIONS BY SCHOOL DISTRICTS AS EQUALIZED BY DEPARTMENT OF TAXATION, Tax including State Homestead, State Tax on Non-Homestead, SPECIAL TAXES, TOTAL TAXES, PAID, WHEN PAID, Number of Receipt, March Settlement 1949, June Settlement 1949, Penalty, November Settlement 1949, Collections to First Monday in January 1950, Delinquent on First Monday in January 1950, Total Delinquent Tax and Penalty, REMARKS.

133-29 133-30

La Carliyan's Sylvan Park, Village of Sylvan, North Sylvan Lake, Sylvan Shady Shores

Paid Under Protest

State of Minnesota, State of Minnesota, State of Minnesota, State of Minnesota, State of Minnesota, State of Minnesota, State of Minnesota, State of Minnesota, Wm. O. Robertson, Elm. E. Erickson, Wm. Roy & Irene Eleanor Fisher

1 NW 1/4 of NE 1/4 Lot 1 2 133 30 /, 2 NW 1/4 of NE 1/4 " 2, 3 SW 1/4 of NE 1/4, 4 SE 1/4 of NE 1/4, 6 NE 1/4 of NW 1/4 " 3, 7 NW 1/4 of NW 1/4 " 4, 8 SW 1/4 of NW 1/4, 9 SE 1/4 of NW 1/4, 11 NE 1/4 of SW 1/4 " 6 34 16 209 850 1059 353 353, 12 NW 1/4 of SW 1/4 40 " 240 240 80 80, 13 SW 1/4 of SW 1/4 " 5 less 1 ac. 44 25 " 264 264 88 88, 14 SE 1/4 of SW 1/4, 15 1 ac. g Lot 5 1 " 22 125 147 49 49, 16 NW 1/4 of NE 1/4 Lot 5 less Sylvan 35-60 " 141 141 47 47, 17 NW 1/4 of SE 1/4 " 7 Shady Show 47 " 147 147 49 49, 18 SW 1/4 of SE 1/4, 19 SE 1/4 of SE 1/4, 20 201 86 1023 975 1998 666 666

11 353 7042 136 7178 2nd Half Paid OCT 31 1948, 12 80 1596 30 1626 1st Half Paid MAY 31 1949, 13 88 1756 34 1790 2nd Half Paid OCT 31 1948, 15 SOLD FOR TAXES 49 978 18 996 PAID BY FULL OCT 31 1948 13555, 16 SOLD FOR TAXES 47 938 18 956 956, 17 SOLD FOR TAXES 49 978 18 996 996, 20 666 13298 254 13542 5297 6293 1952

IN WHOSE NAME ASSESSED	TO WHOM TRANSFERRED	DESCRIPTION OF PROPERTY					TRUE AND FULL VALUATIONS											ASSESSED VALUATIONS											SOLD FOR TAXES	VALUATIONS BY SCHOOL DISTRICTS AS EQUALIZED BY DEPARTMENT OF TAXATION						Tax including State Homestead	State Tax on Non-Homestead	SPECIAL TAXES	TOTAL TAXES	PAID	WHEN PAID	Number of Receipt	March Settlement 1949	June Settlement 1949	Penalty	November Settlement 1949	Penalty	Collections to First Monday in January 1950	Penalty	Delinquent on First Monday in January 1950	Total Delinquent Tax and Penalty	REMARKS																				
		SUBDIVISION	Sec. or Lot	Town or Block	Rng.	Number of Acres of Land	No. School District	Indicate Homestead Yes or No	Indicate Agricultural Yes or No	LAND Exclusive of Structures and Improvements	BUILDINGS and Other Structures	MACHINERY Permanently Attached to Real Estate	TOTAL True and Full Value	RURAL		ALL OTHER		MACHINERY Permanently Attached to Real Estate	TOTAL ASSESSED VALUE	Total Assessed Value as Equalized by the Board of Review	Dollars	District No.	District No.	District No.	District No.	District No.	District No.	Mills		Dollars	Dollars	Dollars	Dollars	Dollars	Dollars																		Dollars	Mills	Mills	Dollars	Dollars	Dollars	Dollars	Dollars	Dollars	Dollars	Dollars	Dollars	Dollars	Dollars	Dollars	Dollars				
														Homestead Up to \$4,000	Over \$4,000 and Non-Homestead	Homestead Up to \$4,000	Over \$4,000 and Non-Homestead																																																				Rate	Rate	Rate	Rate
														20%	33 1/3%	25%	40%																																																				%	%	%	%
<i>Ovillo J + Rosie M. Ruckdaschel</i>	<i>Lot 1</i>	<i>3</i>	<i>133</i>	<i>30</i>	<i>38.84</i>	<i>1</i>	<i>Yes</i>	<i>230</i>			<i>230</i>	<i>46</i>					<i>46</i>		<i>1</i>	<i>H</i>	<i>46</i>									<i>918</i>	<i>918</i>	<i>1</i>	<i>2nd Half Paid OCT 3 1 1949</i>	<i>14360</i>					<i>878</i>																																	
"	<i>2</i>				<i>38.50</i>		"	<i>210</i>			<i>210</i>	<i>42</i>					<i>42</i>		<i>2</i>	<i>H</i>	<i>42</i>									<i>838</i>	<i>838</i>	<i>2</i>	<i>1st Half Paid MAY 3 1 1949</i>	<i>14360</i>																																						
State of Minnesota																			<i>3</i>																																																					
State of Minnesota																			<i>4</i>																																																					
<i>Ovillo J + Rosie M. Ruckdaschel</i>	<i>3</i>				<i>38.14</i>		"	<i>305</i>			<i>305</i>	<i>61</i>					<i>61</i>		<i>6</i>	<i>H</i>	<i>61</i>									<i>1218</i>	<i>1218</i>	<i>6</i>	<i>Balance Paid OCT 3 1 1949</i>	<i>14360</i>																																						
"	<i>4</i>				<i>37.78</i>		"	<i>215</i>			<i>215</i>	<i>43</i>					<i>43</i>		<i>7</i>	<i>H</i>	<i>43</i>								<i>858</i>	<i>858</i>	<i>4</i>	<i>Balance Paid OCT 3 1 1949</i>	<i>14360</i>											<i>24.22</i>																												
"	<i>8</i>				<i>40</i>		"	<i>370</i>	<i>115</i>		<i>485</i>	<i>97</i>					<i>97</i>		<i>8</i>	<i>H</i>	<i>97</i>							<i>1936</i>	<i>1936</i>	<i>8</i>	<i>1st Half Paid MAY 3 1 1949</i>	<i>14360</i>					<i>23.88</i>						<i>24.22</i>																													
"	<i>9</i>				<i>40</i>		"	<i>200</i>			<i>200</i>	<i>40</i>					<i>40</i>		<i>9</i>	<i>H</i>	<i>40</i>							<i>798</i>	<i>798</i>	<i>9</i>	<i>Balance Paid OCT 3 1 1949</i>	<i>14360</i>																																								
<i>Frank Swanson</i>	<i>11</i>				<i>40</i>		<i>No</i>	<i>210</i>			<i>210</i>	<i>70</i>					<i>70</i>		<i>11</i>									<i>1396</i>	<i>28</i>	<i>1424</i>	<i>11</i>												<i>1424</i>	<i>91566</i>																												
"	<i>12</i>				<i>40</i>		"	<i>291</i>			<i>291</i>	<i>97</i>					<i>97</i>		<i>12</i>									<i>1936</i>	<i>38</i>	<i>1974</i>	<i>12</i>												<i>1974</i>	<i>92171</i>																												
<i>Leslie E. + Rose M. Ostry</i>	<i>13</i>				<i>40</i>		<i>Yes</i>	<i>300</i>	<i>200</i>		<i>500</i>	<i>100</i>					<i>100</i>		<i>13</i>	<i>H</i>	<i>100</i>							<i>1996</i>	<i>1996</i>	<i>13</i>	<i>PAID IN FULL APR 1 3 1949</i>	<i>14650</i>					<i>24.74</i>																																			
"	<i>14</i>				<i>40</i>		"	<i>120</i>			<i>120</i>	<i>24</i>					<i>24</i>		<i>14</i>	<i>H</i>	<i>24</i>							<i>478</i>	<i>478</i>	<i>14</i>	<i>PAID IN FULL APR 1 3 1949</i>	<i>14650</i>																																								
State of Minnesota																			<i>15</i>																																																					
State of Minnesota																			<i>16</i>																																																					
State of Minnesota																			<i>17</i>																																																					
State of Minnesota																			<i>18</i>																																																					
State of Minnesota																			<i>19</i>																																																					
																			<i>20</i>																																																					
					<i>39326</i>			<i>2451</i>	<i>315</i>		<i>2766</i>	<i>453</i>	<i>167</i>				<i>620</i>											<i>453</i>	<i>167</i>	<i>620</i>	<i>41</i>	<i>12372</i>	<i>66</i>		<i>12438</i>			<i>5740</i>		<i>2300</i>		<i>3398</i>																														

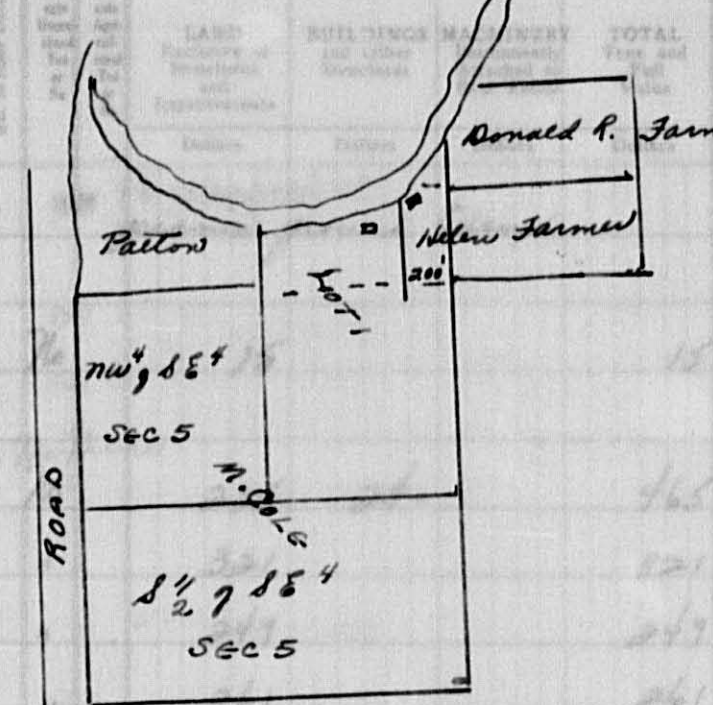
Lav Carlyn's Sylvan Park Village of Sylvan North Sylvan Lake Sylvan Shady Shores

Assessment Roll and Tax List of Real Property in the Town of Sylvan

Table with columns: IN WHOSE NAME ASSESSED, TO WHOM TRANSFERRED, DESCRIPTION OF PROPERTY, TRUE AND FULL VALUATIONS, ASSESSED VALUATIONS, VALUATIONS BY SCHOOL DISTRICTS AS EQUALIZED BY DEPARTMENT OF TAXATION, SOLD FOR TAXES, PAID, WHEN PAID, Number of Receipt, March Settlement 1949, June Settlement 1949, Penalty, Collections to First Monday in January 1950, Delinquent on First Monday in January 1950, Total Delinquent Tax and Penalty, REMARKS.

Map Carlson's Sylvan Park, Village of Sylvan, North Sylvan Lake, Sylvan Shady Shores

IN WHOSE NAME ASSESSED	TO WHOM TRANSFERRED	SUBDIVISION	DESCRIPTION OF PROPERTY	ACRES	CLASS	TRUE AND FULL VALUATIONS					ASSESSED VALUATIONS					SOLD FOR TAXES	VALUATIONS BY SCHOOL DISTRICTS AS EQUALIZED BY DEPARTMENT OF TAXATION						PAID	WHEN PAID	Number of Receipt	March Settlement 1949	June Settlement 1949	Penalty 1949	November Settlement 1949	Penalty 1949	Collections to First Monday in January 1950	Penalty 1950	Delinquent on First Monday in January 1950	Total Delinquent Tax and Penalty	REMARKS				
						LAND	BUILDINGS	IMPROVEMENTS	TOTAL	AGRICULTURAL	DOMESTIC	HOMESTEAD	OVER \$4,000 and Non-Homestead	MACHINERY Permanently Attached to Real Estate	TOTAL ASSESSED VALUE		Total Assessed Value as Equalized by the Board of Review	District No.	District No.	District No.	District No.	District No.														District No.	Tax including State Homestead Mills	State Tax on Non-Homestead 386 Mills	SPECIAL TAXES
Clara E. McGuire Super & Sylvan, May Furness & Will & Cullage		Part 740 X 527 of Lot 2 SW																																					
		315' X 350' of Lot 2																																					
		NW 1/4 of NE 1/4																																					
Harriet & B. Nerauf		Lot 2 W. 9/16 of NE 1/4 S. 4. R. 21.																																					
		SE 1/4 of NE 1/4																																					
R. G. Patton Pufford G. Lila Patton		all E. of road 950' of NE 1/4 (Part of Lot 2) less 10' wide road																																					
Harriet B. Nerauf		NE 1/4 of NW 1/4 Lot 3																																					
"		NW 1/4 of NW 1/4 "																																					
"		SW 1/4 of NW 1/4 "																																					
"		SE 1/4 of NW 1/4 "																																					
R. G. Patton Pufford G. Lila Patton		That part of Lot 1 lying gtr. line except E. 200' of gtr. line																																					
Sec. St. Bk., Village		NE 1/4 of SW 1/4																																					
Paul O. Berglund		NW 1/4 of SW 1/4																																					
N.W. Paper Co.		SW 1/4 of SW 1/4																																					
Sec. St. Bk., Village		SE 1/4 of SW 1/4																																					
Helen A. Farmer		3.200' of that part of Lot 1 lying N. & E. of gtr. line.																																					
Ralph A. + Cora Agnes Colb		That part of Lot 1 lying N. & E. of gtr. line																																					
"		NW 1/4 of SE 1/4																																					
"		SW 1/4 of SE 1/4																																					
"		SE 1/4 of SE 1/4																																					
Donald R. Farmer		Part of Lot 1, N. & E. line parallel to W. line + 660' N. + 200' E. line of Lot 1																																					
		W. of																																					



Village of Sylvan  
 Sylvan Shady Shores  
 Village of Sylvan Park



Assessment Roll and Tax List of Real Property in the Town of Sylvan of Sylvan

Cass County, Minnesota, for Taxes for the Year 1948.

Table with columns: IN WHOSE NAME ASSESSED, TO WHOM TRANSFERRED, DESCRIPTION OF PROPERTY, TRUE AND FULL VALUATIONS, ASSESSED VALUATIONS, VALUATIONS BY SCHOOL DISTRICTS AS EQUALIZED BY DEPARTMENT OF TAXATION, TAXES, PAID, WHEN PAID, Number of Receipt, March Settlement, June Settlement, November Settlement, Collections to First Monday in January 1950, Delinquent on First Monday in January 1950, Total Delinquent Tax and Penalty, REMARKS.

133-20 132-80

133-20 132-80

Carlyon's Sylvan Park Village of Sylvan North Sylvan Shores Sylvan Shady Shores

Assessment Roll and Tax List of Real Property in the Town of Sylvan

Cass County, Minnesota, for Taxes for the Year 1948.

Table with columns: IN WHOSE NAME ASSESSED, TO WHOM TRANSFERRED, DESCRIPTION OF PROPERTY, TRUE AND FULL VALUATIONS, ASSESSED VALUATIONS, VALUATIONS BY SCHOOL DISTRICTS AS EQUALIZED BY DEPARTMENT OF TAXATION, SOLD FOR TAXES, TAXES, PAID, WHEN PAID, Number of Receipt, March Settlement 1949, June Settlement 1949, November Settlement 1949, Collections to First Monday in January 1950, Delinquent on First Monday in January 1950, Total Delinquent Tax and Penalty, REMARKS.

Arno + Clara L. Ressler

O.A. + Erna Berndt

Willis + Flossie Mann

Anna J. Whipple

Amiel Berndt

Wesley + Emma Beck

Miford W. Wright

La. Carlson's Sylvan Park

Village of Sylvan

North Sylvan Lake

Sylvan Shady Shores



Assessment Roll and Tax List of Real Property in the Town of Sylvan,

Cass County, Minnesota, for Taxes for the Year 1948.

IN WHOSE NAME ASSESSED	TO WHOM TRANSFERRED	DESCRIPTION OF PROPERTY				TRUE AND FULL VALUATIONS				ASSESSED VALUATIONS					FINAL EQUALIZED VALUE	SOLD FOR TAXES	VALUATIONS BY SCHOOL DISTRICTS AS EQUALIZED BY DEPARTMENT OF TAXATION						Tax including State Homestead	State Tax on Non-Homestead	SPECIAL TAXES	TOTAL TAXES	PAID	WHEN PAID	Number of Receipt	March Settlement 1949	June Settlement 1949	Penalty	November Settlement 1949	Penalty	Collections to First Monday in January 1950	Penalty	Delinquent on First Monday in January 1950	Total Delinquent Tax and Penalty	REMARKS			
		SUBDIVISION	Sec. or Lot	Town or Block	Rng.	Number of Acres of Land	LAND Exclusive of Structures and Improvements	BUILDINGS and Other Structures	MACHINERY Permanently Attached to Real Estate	TOTAL True and Full Value	RURAL		ALL OTHER				MACHINERY Permanently Attached to Real Estate	TOTAL ASSESSED VALUE	Total Assessed Value as Equalized by the Board of Review	District No.	District No.	District No.																		District No.	District No.	District No.
											Up to \$4,000 20%	Over \$4,000 and Non-Homestead 33 1/3%	Homestead Up to \$4,000 25%	Over \$4,000 and Non-Homestead 40%																												
Ralph A. Cole		NE 1/4 of NE 1/4	8	133	30	40			235				47	235	47	1	H	47					938	938	1	PAID IN FULL MAY 31 1949	7512		938													
Arnold Berndt		NW 1/4 of NE 1/4				40			120				24	120	24	2	H	24					478	478	2	2nd Half Paid OCT 31 1949	13808		239		239											
"		SW 1/4 of NE 1/4				40			120				24	120	24	3	H	24					478	478	3	1st Half Paid OCT 31 1949	13808		239		239											
Wm. Y. Gerrels		SE 1/4 of NE 1/4				40			80				16	80	16	4	H	16					320	320	4	1st Half Paid APR 25 1949	4818		160		160											
O. A. + Erna Berndt		NE 1/4 of NW 1/4				40			230	475			141	705	141	6	H	141					2814	2814	6	PAID ON FEB 31 1949	10497		2814													
"		NW 1/4 of NW 1/4				40			240				48	240	48	7	H	48					958	958	7	PAID ON FEB 31 1949	10497		958													
"		SW 1/4 of NW 1/4				40			210				42	210	42	8	H	42					838	838	8	PAID ON FEB 31 1949	10497		838													
"		SE 1/4 of NW 1/4				40			160				32	160	32	9	H	32					638	638	9	PAID ON FEB 31 1949	10497		638													
"		NE 1/4 of SW 1/4				40			250				50	250	50	11	H	50					998	998	11	2nd Half Paid OCT 31 1949	13808		499		499											
"		NW 1/4 of SW 1/4				40			120				24	120	24	12	H	24					478	478	12	2nd Half Paid OCT 31 1949	13808		239		239											
"		SW 1/4 of SW 1/4				40			310				62	310	62	13	H	62					1236	1236	13	2nd Half Paid OCT 31 1949	13808		618		618											
"		SE 1/4 of SW 1/4				40			200				40	200	40	14	H	40					798	798	14	2nd Half Paid OCT 31 1949	13808		399		399											
Wm. Y. Gerrels		NE 1/4 of SE 1/4				40			250				50	250	50	16	H	50					998	998	16	1st Half Paid APR 25 1949	4818		499		499											
"		NW 1/4 of SE 1/4				40			320				64	320	64	17	H	64					1276	1276	17	2nd Half Paid OCT 31 1949	14475		638		638											
"		SW 1/4 of SE 1/4				40			400	300			140	700	140	18	H	140					2794	2794	18	1st Half Paid APR 25 1949	4818		1397		1397											
"		SE 1/4 of SE 1/4				40			140				28	140	28	19	H	28					558	558	19	2nd Half Paid OCT 31 1949	14475		279		279											
						640			3385	775			832	4160	832								16598	16598				11392		5206												

Lafayette's Sylvan Park  
Village of Sylvan  
North Sylvan Lake  
Sylvan Shady Shores

Assessment Roll and Tax List of Real Property in the Town of Sylvan

Cass County, Minnesota, for Taxes for the Year 1948.

Table with columns for IN WHOSE NAME ASSESSED, TO WHOM TRANSFERRED, DESCRIPTION OF PROPERTY, TRUE AND FULL VALUATIONS, ASSESSED VALUATIONS, VALUATIONS BY SCHOOL DISTRICTS AS EQUALIZED BY DEPARTMENT OF TAXATION, TAXES, PAID, WHEN PAID, Number of Receipt, March Settlement 1949, June Settlement 1949, November Settlement 1949, Collections to First Monday in January 1950, Delinquent on First Monday in January 1950, Total Delinquent Tax and Penalty, REMARKS.

Assessment Roll and Tax List of Real Property in the Town of Sylvan

Cass County, Minnesota, for Taxes for the Year 1948.

IN WHOSE NAME ASSESSED	TO WHOM TRANSFERRED	DESCRIPTION OF PROPERTY			TRUE AND FULL VALUATIONS				ASSESSED VALUATIONS					FINAL EQUALIZED VALUE	SOLD FOR TAXES	VALUATIONS BY SCHOOL DISTRICTS AS EQUALIZED BY DEPARTMENT OF TAXATION						TAX INCLUDING STATE HOMESTEAD	STATE TAX ON NON-HOMESTEAD	SPECIAL TAXES	TOTAL TAXES	PAID	WHEN PAID	Number of Receipt	March Settlement 1949	June Settlement 1949	November Settlement 1949	Penalty	Collections to First Monday in January 1950	Penalty	Delinquent on First Monday in January 1950	Total Delinquent Tax and Penalty	REMARKS						
					LAND Exclusive of Structures and Improvements	BUILDINGS and Other Structures	MACHINERY Permanently Attached to Real Estate	TOTAL True and Full Value	RURAL		ALL OTHER		MACHINERY Permanently Attached to Real Estate			TOTAL ASSESSED VALUE	Total Assessed Value as Equalized by the Board of Review	District No.	District No.	District No.	District No.																	District No.	District No.				
									Homestead Up to \$4,000 20%	Over \$4,000 and Non-Homestead 33 1/3%	Homestead Up to \$4,000 25%	Over \$4,000 and Non-Homestead 40%																												Rate	Rate	Rate	Rate
									Dollars	Dollars	Dollars	Dollars																												Dollars	Dollars	Dollars	Dollars
Fannie Dade		NE 1/4 of NE 1/4	10 133 30 40	1 70	240		240	80		80								1596	30	1626	1	JUL 30 1949	11491						813	24	813	9.894											
State of Minnesota		NW 1/4 of NE 1/4																																									
State of Minnesota		SW 1/4 of NE 1/4																																									
State of Minnesota		SE 1/4 of NE 1/4																																									
Leslie + Rose Pletz		NE 1/4 of NW 1/4	40	70	120		120	24		24								478		478	6	PAID IN FULL APR 13 1949	4650																				
"		NW 1/4 of NW 1/4	40	"	275		275	55		55								1098		1098	7	PAID IN FULL APR 13 1949																					
State of Minnesota		SW 1/4 of NW 1/4																																									
State of Minnesota		SE 1/4 of NW 1/4																																									
Ernest J. + Daphia Stark		NE 1/4 of SW 1/4	40	"	160	625	825	167		167								3332		3332	11	2nd Half Paid OCT 31 1949 } 1st Half Paid MAY 31 1949 } 2nd Half Paid OCT 31 1949 } 1st Half Paid MAY 31 1949 } 2nd Half Paid OCT 31 1949 } 1st Half Paid MAY 31 1949 }	13685																				
"		NW 1/4 of SW 1/4	40	"	155		155	31		31								618		618	12																						
"		SW 1/4 of SW 1/4	40	"	255		255	51		51								1018		1018	13																						
"		SE 1/4 of SW 1/4	40	"	360		360	72		72								1436		1436	14																						
Wm. Roy Fisher		NE 1/4 of SE 1/4	40	70	120		120	40		40								798	16	814	16	PAID IN FULL OCT 31 1949 } 2nd Half Paid OCT 31 1949 } 1st Half Paid MAY 31 1949 }	13555																				
State of Minnesota (Cont. E. J. Stark)		NW 1/4 of SE 1/4	40	70	160		160	32		32								638		638	17																						
State of Minnesota (Cont. E. J. Stark)		SW 1/4 of SE 1/4	40	"	160		160	32		32								638		638	18																						
Wm. Roy Fisher		SE 1/4 of SE 1/4	40	70	256	275	531	177		177								3532	68	3600	19	PAID IN FULL OCT 31 1949 } 2nd Half Paid OCT 31 1949 } 1st Half Paid MAY 31 1949 }	13555																				
			40		2261	950	3211	464	297	761								#1 15182	114	15296	20																						

Vertical text on the right edge of the page, including 'Cass County, Minnesota' and 'Sylvan Shady Shores'.

Assessment Roll and Tax List of Real Property in the Town of Sylvan

Cass County, Minnesota, for Taxes for the Year 1948.

Table with columns: IN WHOSE NAME ASSESSED, TO WHOM TRANSFERRED, DESCRIPTION OF PROPERTY, TRUE AND FULL VALUATIONS, ASSESSED VALUATIONS, VALUATIONS BY SCHOOL DISTRICTS AS EQUALIZED BY DEPARTMENT OF TAXATION, TAXES, PAID, WHEN PAID, Number of Receipt, March Settlement 1949, June Settlement 1949, November Settlement 1949, Collections to First Monday in January 1950, Delinquent on First Monday in January 1950, Total Delinquent Tax and Penalty, REMARKS.

Frank L. + Alice M. Allen
Walter A. + Vera M. Fisher

Frank L. + Alice M. Allen

Walter A. + Vera M. Fisher
Frank L. + Alice M. Allen
Walter A. + Vera M. Fisher

Map Carleton's Sylvan Park
Village of Sylvan
North Sylvan Lake
Sylvan Shady Shores

Assessment Roll and Tax List of Real Property in the Town of Sylvan

Cass County, Minnesota, for Taxes for the Year 1948.

IN WHOSE NAME ASSESSED	TO WHOM TRANSFERRED	DESCRIPTION OF PROPERTY				No. School District	Indicate Homestead Yes or No	Indicate Agricultural Yes or No	TRUE AND FULL VALUATIONS				ASSESSED VALUATIONS					FINAL EQUALIZED VALUE	SOLD FOR TAXES	VALUATIONS BY SCHOOL DISTRICTS AS EQUALIZED BY DEPARTMENT OF TAXATION						TAX INCLUDING STATE HOMESTEAD	State Tax on Non-Homestead	SPECIAL TAXES	TOTAL TAXES	PAID	WHEN PAID	Number of Receipt	March Settlement 1949	June Settlement 1949	Penalty	November Settlement 1949	Penalty	Collections to First Monday in January 1950	Penalty	Delinquent on First Monday in January 1950	Total Delinquent Tax and Penalty	REMARKS																																	
		SUBDIVISION	Sec. or Lot	Town or Block	Rng.				Number of Acres of Land	LAND Exclusive of Structures and Improvements	BUILDINGS and Other Structures	MACHINERY Permanently Attached to Real Estate	TOTAL True and Full Value	RURAL		ALL OTHER				MACHINERY Permanently Attached to Real Estate	TOTAL ASSESSED VALUE	Total Assessed Value as Equalized by the Board of Review	District No.	District No.	District No.																		District No.	District No.	District No.	Rate	Rate	Rate	Rate	Rate	Rate	Rate	Rate	Rate	Rate	Rate	Rate	Rate	Rate	Rate	Rate														
														Homestead	Over \$4,000 and Non-Homestead	Homestead	Over \$4,000 and Non-Homestead																																													Rate	Rate	Rate	Rate	Rate	Rate	Rate	Rate	Rate	Rate	Rate	Rate	Rate	Rate
														Up to \$4,000 20%	33 1/3%	Up to \$4,000 25%	40%																																													Mills	Mills	Mills	Mills	Mills	Mills	Mills	Mills	Mills	Mills	Mills	Mills	Mills	Mills
Geo. L. Ramsey		NE 1/4 of NE 1/4	12	133	30	40	1	70	300			300	100		100						1	100			1996	38	2034											2034	9237																																				
"		NW 1/4 of NE 1/4				40	"	"	228	255	453	151		151							2	151			3012	58	3070										3070	3377																																					
"		SW 1/4 of NE 1/4				40	"	"	279		279	93		93							3	93			1856	36	1892										1892	2081																																					
"		SE 1/4 of NE 1/4				40	"	"	240		240	80		80							4	80			1596	30	1626										1626	1789																																					
Walter A. + Vera M. Fisher		NE 1/4 of NW 1/4 Sylvan Beach				37	10	"	102		102	34		34							6	34			678	14	692	PAID IN FULL SEP 1 1949	12061							692	18																																						
"		SW 1/4 of NW 1/4 Sylvan Beach				28	20	"	168		168	56		56							7	56			1118	22	1140	PAID IN FULL SEP 1 1949	12061							1140	29																																						
"		SE 1/4 of NW 1/4				40		"	120		120	40		40							9	40			798	16	814	PAID IN FULL SEP 1 1949	12061							814	20																																						
"		NE 1/4 of SW 1/4				40		"	120		120	40		40							11	40			798	16	814	PAID IN FULL SEP 1 1949	12061																																														
"		NW 1/4 of SW 1/4				40		"	219		219	73		73							12	73			1484	28	1484	PAID IN FULL SEP 1 1949	12061							5146	128																																						
"		SW 1/4 of SW 1/4				40		"	240		240	80		80							13	80			1596	30	1626	PAID IN FULL SEP 1 1949																																															
"		SE 1/4 of SW 1/4				40		"	180		180	60		60							14	60			1198	24	1222	PAID IN FULL SEP 1 1949																																															
Albert + Emma C. Satter		NE 1/4 of SE 1/4				40		"	159		159	53		53							16	53			1058	20	1078	PAID IN FULL MAY 31 1949									1078																																						
"		NW 1/4 of SE 1/4				40		"	249		249	83		83							17	83			1656	32	1688	PAID IN FULL MAY 31 1949	7302							1688																																							
"		SW 1/4 of SE 1/4				40		"	180		180	60		60							18	60			1198	24	1222	PAID IN FULL MAY 31 1949									1222																																						
"		SE 1/4 of SE 1/4				40		"	240		240	80		80							19	80			1596	30	1626	PAID IN FULL MAY 31 1949									1626																																						
						585	30		3024	325	3249	1083		1083							20				2160	418	22028									5614	7792	5622																																					

Assessment Roll and Tax List of Real Property in the Town of Sylvan,

Table with columns: IN WHOSE NAME ASSESSED, TO WHOM TRANSFERRED, DESCRIPTION OF PROPERTY, TRUE AND FULL VALUATIONS, ASSESSED VALUATIONS, FINAL EQUALIZED VALUE. Includes handwritten entries for Frank C. Sliter, Mrs. Annie C. Silvers, and Archie H. & Helen J. Gully.

Cass County, Minnesota, for Taxes for the Year 1948.

Table with columns: VALUATIONS BY SCHOOL DISTRICTS AS EQUALIZED BY DEPARTMENT OF TAXATION, Tax including State Homestead, SPECIAL TAXES, TOTAL TAXES, PAID, WHEN PAID, Number of Receipt, March Settlement 1949, June Settlement 1949, November Settlement 1949, Collections to First Monday in January 1950, Delinquent on First Monday in January 1950, Total Delinquent Tax and Penalty, REMARKS. Includes handwritten entries for various districts and tax payments.

Assessment Roll and Tax List of Real Property in the Town of Sylvan

Cass County, Minnesota, for Taxes for the Year 1948.

Table with columns: IN WHOSE NAME ASSESSED, TO WHOM TRANSFERRED, DESCRIPTION OF PROPERTY, TRUE AND FULL VALUATIONS, ASSESSED VALUATIONS, VALUATIONS BY SCHOOL DISTRICTS AS EQUALIZED BY DEPARTMENT OF TAXATION, SOLD FOR TAXES, PAID, WHEN PAID, Number of Receipt, March Settlement 1949, June Settlement 1949, November Settlement 1949, Collections to First Monday in January 1950, Delinquent on First Monday in January 1950, Total Delinquent Tax and Penalty, REMARKS.





Assessment Roll and Tax List of Real Property in the Town of Sylvan

Cass County, Minnesota, for Taxes for the Year 1948.

Table with columns: IN WHOSE NAME ASSESSED, TO WHOM TRANSFERRED, DESCRIPTION OF PROPERTY, TRUE AND FULL VALUATIONS, ASSESSED VALUATIONS, VALUATIONS BY SCHOOL DISTRICTS AS EQUALIZED BY DEPARTMENT OF TAXATION, SOLD FOR TAXES, PAID, WHEN PAID, Number of Receipt, March Settlement 1949, June Settlement 1949, November Settlement 1949, Collections to First Monday in January 1950, Delinquent on First Monday in January 1950, Total Delinquent Tax and Penalty, REMARKS.

133-29 132-29 133-30 132-30 Village of Sylvan North Sylvan Shady Shores























Assessment Roll and Tax List of Real Property in the Town of Sylvan

Cass County, Minnesota, for Taxes for the Year 1948.

Main table with columns: IN WHOSE NAME ASSESSED, TO WHOM TRANSFERRED, DESCRIPTION OF PROPERTY, TRUE AND FULL VALUATIONS, ASSESSED VALUATIONS, VALUATIONS BY SCHOOL DISTRICTS AS EQUALIZED BY DEPARTMENT OF TAXATION, SOLD FOR TAXES, PAID, WHEN PAID, Number of Receipt, March Settlement 1949, June Settlement 1949, November Settlement 1949, Collections to First Monday in January 1950, Delinquent on First Monday in January 1950, Total Delinquent Tax and Penalty, REMARKS.

Carlyon's Sylvan Park, Village of Sylvan, North Sylvan Sub.

Land & Allen's 2nd Add. to Sylvan Beach, Sylvan Beach, Add'n. to Sylvan Beach, Land & Allen's First Add'n. to Sylvan Beach, Sylvan Shady Shores



Assessment Roll and Tax List of Real Property in the Town of Sylvan

Cass County, Minnesota, for Taxes for the Year 1948.

Carlyon's Sylvan Park, Village of Sylvan, North Sylvan

Table with columns: IN WHOSE NAME ASSESSED, TO WHOM TRANSFERRED, SUBDIVISION, DESCRIPTION OF PROPERTY, TRUE AND FULL VALUATIONS, ASSESSED VALUATIONS, FINAL EQUALIZED VALUE.

Table with columns: VALUATIONS BY SCHOOL DISTRICTS AS EQUALIZED BY DEPARTMENT OF TAXATION, TAXES, PAID, WHEN PAID, Number of Receipt, March Settlement 1949, June Settlement 1949, November Settlement 1949, Collections to First Monday in January 1950, Delinquent on First Monday in January 1950, Total Delinquent Tax and Penalty, REMARKS.

Land & Allen's 2nd Add., Sylvan Beach, Land & Allen's First Add'n. to Sylvan Beach, Sylvan Shady Shores







Assessment Roll and Tax List of Real Property in the Town of Sylvan

Carlson's Sylvan Park  
Sylvan Beach  
Village  
North Sylvan Sub

Table with columns: IN WHOSE NAME ASSESSED, TO WHOM TRANSFERRED, SUBDIVISION (Sylvan Beach), Section, Town, Rng., Number of Acres of Land, TRUE AND FULL VALUATIONS (LAND, BUILDINGS, MACHINERY, TOTAL), ASSESSED VALUATIONS (RURAL, ALL OTHER, MACHINERY, TOTAL ASSESSED), FINAL EQUALIZED VALUE.

389 125 564 188 188

Cass County, Minnesota, for Taxes for the Year 1948.

Land & Allen's 2nd Add. to Sylvan Beach  
Land & Allen's First Addn. to Sylvan Beach  
Sylvan Shady Shores

Table with columns: SOLD FOR TAXES, VALUATIONS BY SCHOOL DISTRICTS AS EQUALIZED BY DEPARTMENT OF TAXATION (District No., Rate, etc.), Tax including State, State Tax on Non-Homestead, SPECIAL TAXES, TOTAL TAXES, PAID, WHEN PAID, Number of Receipt, March Settlement, June Settlement, November Settlement, Collections to First Monday in January, Delinquent on First Monday in January, Total Delinquent Tax and Penalty, REMARKS.

188 188 #1- 3756 74 38.30 916 2506 408





Assessment Roll and Tax List of Real Property in the Town of Sylvan

Cass County, Minnesota, for Taxes for the Year 1948.

Form 50 - JULY 22, 1947 COMPANY, MINNEAPOLIS

Carlson's Sylvan Park, Sylvan Beach, North Sylvan, Land & Allen's First Add'n. to Sylvan Beach, Sylvan Shady Shores

Land & Allen's 2nd Add. to Sylvan Beach, Sylvan Shady Shores

Table with columns: IN WHOSE NAME ASSESSED, TO WHOM TRANSFERRED, SUBDIVISION, TRUE AND FULL VALUATIONS, ASSESSED VALUATIONS, VALUATIONS BY SCHOOL DISTRICTS, TAXES, PAID, WHEN PAID, etc.

Land & Allen's First Add'n to Sylvan Beach (Part of 102 - Sec. 11-133-30)

Clayton A. Land

Frank & Alice M. Allen

Armen L. Stahl

Kollie S. & Ella A. Lyman

James J. & Esther C. Hayes

Richard J. & Inga M. H. Young

Frank Allen & Clayton Land

George & Alice J. Fyhrick

William J. & Helen M. Crocker

Wm. J. & Adeline M. Crocker

Frank Allen & Clayton Land

Frank Allen & Clayton Land

Frank Allen & Clayton Land

Frank Allen & Clayton Land

Carl J. & Eva M. Martin

Carl J. & Eva M. Martin

Frank Allen & Clayton Land

Frank Allen & Clayton Land

Frank Allen & Clayton Land

Frank Allen & Clayton Land

Frank Allen & Clayton Land

Table with columns: RURAL, ALL OTHER, MACHINERY, TOTAL ASSESSED VALUE, FINAL EQUALIZED VALUE, SOLD FOR TAXES, TAXES, PAID, WHEN PAID, etc.

Summary rows at the bottom of the table showing totals for various categories.

Assessment Roll and Tax List of Real Property in the Town of Sylvan

Cass County, Minnesota, for Taxes for the Year 1948.

Curlyon's Sylvan Park, Sylvan Beach, Sylvan Beach, North Sylvan, Land & Allen's First Add'n. to Sylvan Beach, Sylvan Shady Shores

Table with columns: IN WHOSE NAME ASSESSED, TO WHOM TRANSFERRED, SUBDIVISION, DESCRIPTION OF PROPERTY, TRUE AND FULL VALUATIONS, ASSESSED VALUATIONS, VALUATIONS BY SCHOOL DISTRICTS AS EQUALIZED BY DEPARTMENT OF TAXATION, PAID, WHEN PAID, March Settlement, June Settlement, Penalty, November Settlement, Penalty, Collections to First Monday in January 1950, Delinquent on First Monday in January 1950, Total Delinquent Tax and Penalty, REMARKS.

Land & Allen's 2nd Add. to Sylvan Beach











California Sylvan Beach  
Land & Allen's 2nd Add.  
to Sylvan Beach  
Sylvan Beach  
Sylvan Beach  
Land & Allen's First  
Add'n. to Sylvan Beach  
Sylvan Shady Shores

IN WHOSE NAME ASSESSED	TO WHOM TRANSFERRED	DESCRIPTION OF PROPERTY				No. School District	Indicate Homestead Yes or No	Indicate Agricultural Yes or No	TRUE AND FULL VALUATIONS				ASSESSED VALUATIONS						FINAL EQUALIZED VALUE	
		Sec. or Lot	Town or Block	Rng.	Number of Acres of Land Acres 100ths				LAND Exclusive of Structures and Improvements	BUILDINGS and Other Structures	MACHINERY Permanently Attached to Real Estate	TOTAL True and Full Value	RURAL		ALL OTHER		MACHINERY Permanently Attached to Real Estate	TOTAL ASSESSED VALUE		Total Assessed Value as Equalized by the Board of Review
													Homestead Up to \$4,000 20%	Over \$4,000 and Non- Homestead 33 1/3%	Homestead Up to \$4,000 25%	Over \$4,000 and Non- Homestead 40%				
Land + Allen	Raymond + Katherine Herron					1	No		15				15	5		5				
Land + Allen		2				"	"		15				15	5		5				
Land + Allen	Vernon A. + Ruth C. Olson	23				"	"		15				15	5		5				
Land + Allen	Frank L. + Alice M. Allen	24				"	"		15				15	5		5				
	Earl M. + Alice J. Nelson	25				"	"		15				15	5		5				
	Earl M. + Alice J. Nelson	26				"	"		15				15	5		5				
	Earl M. + Alice J. Nelson	27				"	"		15				15	5		5				
	" " "	28				"	"		15				15	5		5				
	" " "	29				"	"		15				15	5		5				
		30																		
		31																		
		32																		
		33																		
		34																		
		35																		
		36																		
		37																		
		38																		
		39																		
		40																		
									135				135	45		45				

SOLD FOR TAXES	VALUATIONS BY SCHOOL DISTRICTS AS EQUALIZED BY DEPARTMENT OF TAXATION						Tax including State Homestead .....Mills	State Tax on Non-Homestead .....Mills	SPECIAL TAXES	TOTAL TAXES	PAID	WHEN PAID	Number of Receipt	March Settlement 1949	June Settlement 1949	Penalty	November Settlement 1949	Penalty	Collections to First Monday in January 1950	Penalty	Delinquent on First Monday in January 1950	Total Delinquent Tax and Penalty	REMARKS
	District No.	District No.	District No.	District No.	District No.	District No.																	
	Rate	Rate	Rate	Rate	Rate	Rate																	
1	5						100	02	102	14	PAID IN FULL MAY 28 1949												
2	5						100	02	102	2	PAID IN FULL MAY 28 1949												
3	5						100	02	102	3	PAID IN FULL MAY 28 1949												
4	5						100	02	102	4	PAID IN FULL MAY 28 1949												
5	5						100	02	102	5	PAID IN FULL MAY 28 1949	6263											
6	5						100	02	102	6	PAID IN FULL MAY 28 1949												
7	5						100	02	102	7	PAID IN FULL MAY 28 1949												
8	5						100	02	102	8	PAID IN FULL MAY 28 1949												
9	5						100	02	102	9	PAID IN FULL MAY 28 1949												
10										10													
11										11													
12										12													
13										13													
14										14													
15										15													
16										16													
17										17													
18										18													
19										19													
20										20													

45  
45  
1- 9.00 18  
9.18  
9.18



