

ASSESSMENT BOOKS

1928

Town of Sylvan

THE FRITZ-CROSS CO., ST. CLOUD, MINN.

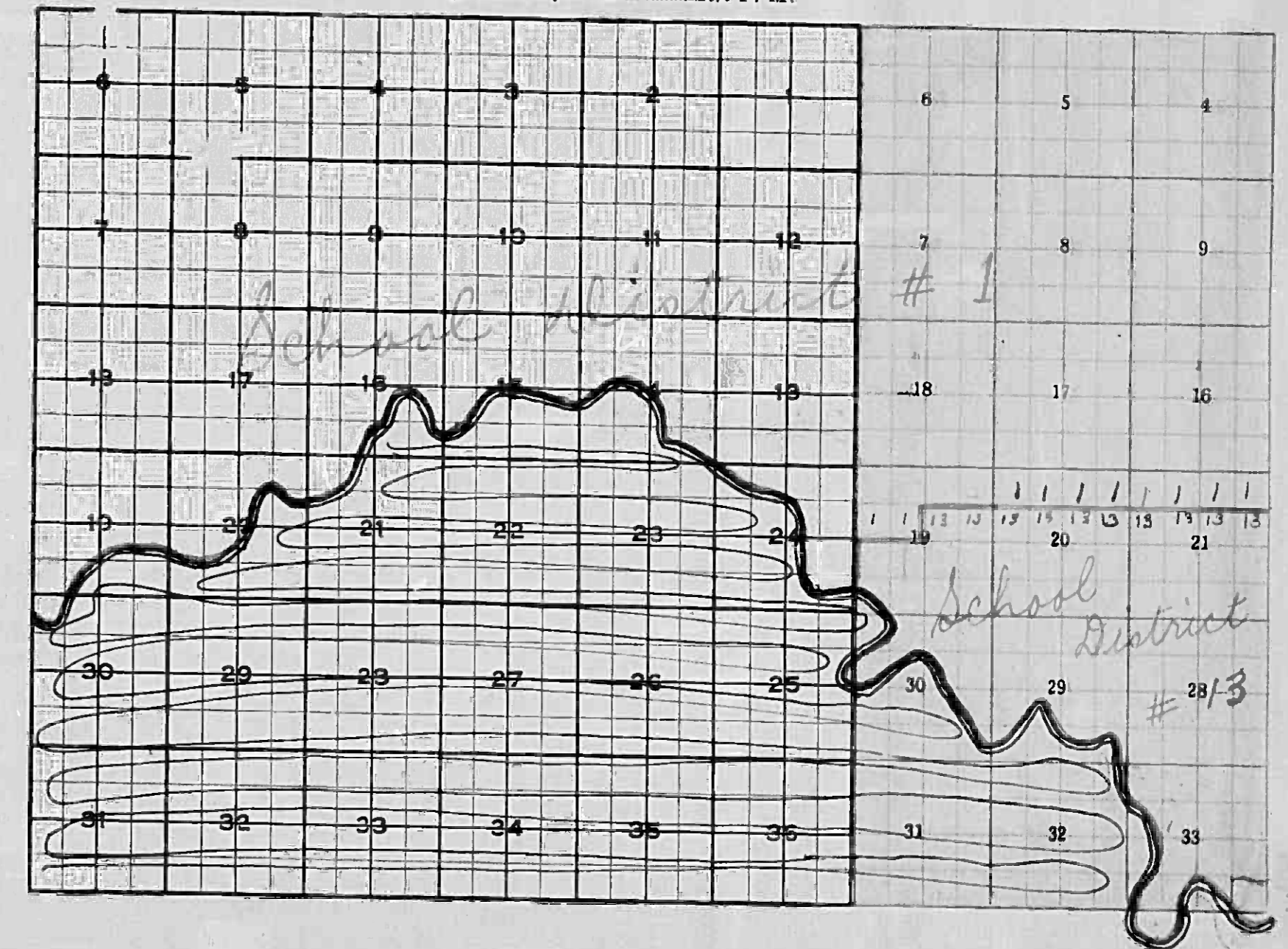
INDEX TO SECTIONS

SECTION PAGE

Section 1	
" 2	
" 3	
" 4	
" 5	
" 6	
" 7	
" 8	
" 9	
" 10	
" 11	
" 12	
" 13	
" 14	
" 15	
" 16	
" 17	
" 18	
" 19	
" 20	
" 21	
" 22	
" 23	
" 24	
" 25	
" 26	
" 27	
" 28	
" 29	
" 30	
" 31	
" 32	
" 33	
" 34	
" 35	
" 36	

For Convenience of Auditor in Showing Boundaries of School Districts.

(Part of 132-29)
 Part of Township No. 133 Range No. 29-30 Mer. P. M.



Assessor's Return of Taxable Real Property in the Town of Sylvan, County of Cass, Minn., for the Year 1928.

Unplatted Real Estate—Assessed at 33 1-3 per cent of True and Full Value.

Table with columns: NAME OF OWNER, No. of School Dist., DESCRIPTION, ASSESSOR'S VALUATIONS (True and Full Value of Land, Structures and Improvements, Total True and Full Value), and EQUALIZED VALUATIONS (Assessed Value as Equalized by Board of Review, Assessed Value as Equalized by the County Board, Assessed Value as Equalized by the Minnesota Tax Commission).

Assessor's Return of Taxable Real Property in the Town of Sylvan, County of Cass, Minn., for the Year 1928.

Unplatted Real Estate—Assessed at 33 1-3 per cent of True and Full Value.

Table with columns: NAME OF OWNER, No. of School Dist., DESCRIPTION, ASSESSOR'S VALUATIONS (True and Full Value of Land, Structures and Improvements, Total True and Full Value), and EQUALIZED VALUATIONS (Assessed Value as Equalized by Board of Review, Assessed Value as Equalized by the County Board, Assessed Value as Equalized by the Minnesota Tax Commission).

4 Assessor's Return of Taxable Real Property in the Town of Sylvan, County of Cass, Minn., for the Year 1928.
 Unplatted Real Estate—Assessed at 33 1-3 per cent of True and Full Value.

NAME OF OWNER	No. of School Dist.	DESCRIPTION					ASSESSOR'S VALUATIONS					EQUALIZED VALUATIONS		
		SUBDIVISION	Sec. or Lot	Twp. or Block	Number of Acres		True and Full Value of Land Exclusive of Structures and Improvements	STRUCTURES AND IMPROVEMENTS		Total True and Full Value of Land Including all Structures, Improvements and Machinery	Assessed Value of Land Including all Structures, Improvements and Machinery	Assessed Value as Equalized by Board of Review	Assessed Value as Equalized by the Minnesota Tax Commission	
					Acres	100ths		Dollars	Dollars					Dollars
Christ Goette	1	NE 1/4 of NE 1/4	7	133	29	40	594	594	120		198			
"	1	NW 1/4 of NE 1/4				40	611	330	174		262			
"	1	SW 1/4 of NE 1/4				40	660	400			220			
"	1	SE 1/4 of NE 1/4				40	660	400			220			
Aug. Satter	1	NE 1/4 of NW 1/4				40	653	396			218			
"	1	NW 1/4 of NW 1/4	Lot 1			40 72	635	385	851		495			
Ida Anderson	1	SW 1/4 of NW 1/4	" 2			40 68	583	332			129			
"	1	SE 1/4 of NW 1/4				40	535	324			178			
"	1	NE 1/4 of SW 1/4				40	422	256			141			
"	1	NW 1/4 of SW 1/4	" 3			40 64	403	311			134			
"	1	SW 1/4 of SW 1/4	" 4			40 62	554	339	1323		626			
"	1	SE 1/4 of SW 1/4				40	535	324			179			
E. E. Dunn	1	NE 1/4 of SE 1/4				40	663	402			221			
"	1	NW 1/4 of SE 1/4				40	663	402			221			
"	1	SW 1/4 of SE 1/4				40	797	421	351		266			
"	1	SE 1/4 of SE 1/4				40	543	333			183			
						642 66	8966	5434	3199		3899			
							4806	2499			2709			
							4806	2499			2709			

Assessor's Return of Taxable Real Property in the Town of Sylvan, County of Cass, Minn., for the Year 1928. 5
 Unplatted Real Estate—Assessed at 33 1-3 per cent of True and Full Value.

NAME OF OWNER	No. of School Dist.	DESCRIPTION					ASSESSOR'S VALUATIONS					EQUALIZED VALUATIONS		
		SUBDIVISION	Sec. or Lot	Twp. or Block	Number of Acres		True and Full Value of Land Exclusive of Structures and Improvements	STRUCTURES AND IMPROVEMENTS		Total True and Full Value of Land Including all Structures, Improvements and Machinery	Assessed Value of Land Including all Structures, Improvements and Machinery	Assessed Value as Equalized by Board of Review	Assessed Value as Equalized by the Minnesota Tax Commission	
					Acres	100ths		Dollars	Dollars					Dollars
John Peterson	1	NE 1/4 of NE 1/4	8	133	29	40	663	402			134	221		
Minn. Power & Light Co.	1	NW 1/4 of NE 1/4				40	663	402			134	221		
"	1	SW 1/4 of NE 1/4				40	663	402			134	221		
"	1	SE 1/4 of NE 1/4				40	663	402			134	221		
August Satter	1	NE 1/4 of NW 1/4				40	614	372	460		274	355		
"	1	NW 1/4 of NW 1/4				40	465	282			94	155		
Frank Satter	1	SW 1/4 of NW 1/4	Less 17 ac. 33											
"	1	SE 1/4 of NW 1/4				63	837	507			169	279		
Minn. Power & Light Co.	1	NE 1/4 of SW 1/4				40	663	402			134	221		
Chas. W. Ramsey	1	NW 1/4 of SW 1/4	Less 18 ac.			62	557	296			284	405		
"	1	SW 1/4 of SW 1/4												
Minn. Power & Light Co.	1	SE 1/4 of SW 1/4				40	663	402			134	221		
"	1	35 ac. q. S ² NW ⁴ & W ² SW ⁴				35	336	336			112	185		
Arthur L. + Fannie Dade	1	NE 1/4 of SE 1/4				40	614	372			184	205		
Minnesota Power & Light Co.	1	NW 1/4 of SE 1/4				40	663	402			134	221		
"	1	SW 1/4 of SE 1/4				40	663	402			134	221		
Arthur L. + Fannie Dade	1	SE 1/4 of SE 1/4				42	663	402	252		205	284		
						640	9906	6005	997		2334	3636		

Assessor's Return of Taxable Real Property in the Town of Sylvan, County of Cass, Minn., for the Year 1928.

Unplatted Real Estate—Assessed at 33 1-3 per cent of True and Full Value.

Table with columns: NAME OF OWNER, No. of School, DESCRIPTION, SUBDIVISION, Sec. or Lot, Twp. or Block, Range, Number of Acres, ASSESSOR'S VALUATIONS (True and Full Value, Structures and Improvements, Total True and Full Value), EQUALIZED VALUATIONS (Assessed Value as Equalized by Board of Review, Assessed Value as Equalized by the County Board, Assessed Value as Equalized by the Minnesota Tax Commission).

1 ac. of SW 1/4 Sec. 1 as follows: Commencing at a point at rd. E. 1/4 a point on the line between Sec. 1 & 2, 2nd. N. of sec. cor. between Sec. 1 & 2, 16 & 17 thence from said first mentioned point to sufficient distance N., thence at rt. angle E., thence at rt. angle to a point 2nd. N. of S. line of Sec. 1, thence at rt. angle W. to place of beginning to contain 1 ac.

Assessor's Return of Taxable Real Property in the Town of Sylvan, County of Cass, Minn., for the Year 1928. 7

Unplatted Real Estate—Assessed at 33 1-3 per cent of True and Full Value.

Table with columns: NAME OF OWNER, No. of School, DESCRIPTION, SUBDIVISION, Sec. or Lot, Twp. or Block, Range, Number of Acres, ASSESSOR'S VALUATIONS (True and Full Value, Structures and Improvements, Total True and Full Value), EQUALIZED VALUATIONS (Assessed Value as Equalized by Board of Review, Assessed Value as Equalized by the County Board, Assessed Value as Equalized by the Minnesota Tax Commission).

Assessor's Return of Taxable Real Property in the Town of Sylvan, County of Cass, Minn., for the Year 1928.

Unplatted Real Estate—Assessed at 33 1-3 per cent of True and Full Value.

Table with columns: NAME OF OWNER, No. of School Dist., DESCRIPTION, SECTOR, TWP, RANGE, ACRES, ASSESSOR'S VALUATIONS (True and Full Value of Land, Structures and Improvements, Total True and Full Value of Land), and EQUALIZED VALUATIONS (Assessed Value as Equalized by Board of Review, Assessed Value as Equalized by the County Board, Assessed Value as Equalized by the Minnesota Tax Commission).

Assessor's Return of Taxable Real Property in the Town of Sylvan, County of Cass, Minn., for the Year 1928.

Unplatted Real Estate—Assessed at 33 1-3 per cent of True and Full Value.

Table with columns: NAME OF OWNER, No. of School Dist., DESCRIPTION, SECTOR, TWP, RANGE, ACRES, ASSESSOR'S VALUATIONS (True and Full Value of Land, Structures and Improvements, Total True and Full Value of Land), and EQUALIZED VALUATIONS (Assessed Value as Equalized by Board of Review, Assessed Value as Equalized by the County Board, Assessed Value as Equalized by the Minnesota Tax Commission).

Assessor's Return of Taxable Real Property in the Town of Sylvan, County of Cass, Minn., for the Year 1928.

Unplatted Real Estate—Assessed at 33 1-3 per cent of True and Full Value.

Table with columns: NAME OF OWNER, No. of School Dist., DESCRIPTION, SUBDIVISION, Sec. or Lot, Twp. or Block, Range, Number of Acres, ASSESSOR'S VALUATIONS (True and Full Value, Structures and Improvements, Total True and Full Value, Assessed Value), EQUALIZED VALUATIONS (Assessed Value as Equalized by Board of Review, Assessed Value as Equalized by County Board, Assessed Value as Equalized by Minnesota Tax Commission).

Assessor's Return of Taxable Real Property in the Town of Sylvan, County of Cass, Minn., for the Year 1928. 11

Unplatted Real Estate—Assessed at 33 1-3 per cent of True and Full Value.

Table with columns: NAME OF OWNER, No. of School Dist., DESCRIPTION, SUBDIVISION, Sec. or Lot, Twp. or Block, Range, Number of Acres, ASSESSOR'S VALUATIONS (True and Full Value, Structures and Improvements, Total True and Full Value, Assessed Value), EQUALIZED VALUATIONS (Assessed Value as Equalized by Board of Review, Assessed Value as Equalized by County Board, Assessed Value as Equalized by Minnesota Tax Commission).

Assessor's Return of Taxable Real Property in the Town of Sylvan, County of Cass, Minn., for the Year 1928. Unplatted Real Estate—Assessed at 33 1/3 per cent of True and Full Value.

Table with columns: NAME OF OWNER, No. of School Dist., DESCRIPTION, SUBDIVISION, Sec. or Lot, Twp. or Block, Range, Number of Acres, ASSESSOR'S VALUATIONS (True and Full Value of Land, Structures and Improvements, Total True and Full Value), EQUALIZED VALUATIONS (Assessed Value as Equalized by Board of Review, Assessed Value as Equalized by the County Board, Assessed Value as Equalized by the Minnesota Tax Commission).

Assessor's Return of Taxable Real Property in the Town of Sylvan, County of Cass, Minn., for the Year 1928. 13 Unplatted Real Estate—Assessed at 33 1/3 per cent of True and Full Value.

Table with columns: NAME OF OWNER, No. of School Dist., DESCRIPTION, SUBDIVISION, Sec. or Lot, Twp. or Block, Range, Number of Acres, ASSESSOR'S VALUATIONS (True and Full Value of Land, Structures and Improvements, Total True and Full Value), EQUALIZED VALUATIONS (Assessed Value as Equalized by Board of Review, Assessed Value as Equalized by the County Board, Assessed Value as Equalized by the Minnesota Tax Commission).

Assessor's Return of Taxable Real Property in the Town of Sylvan, County of Cass, Minn., for the Year 1928.

Unplatted Real Estate—Assessed at 33 1-3 per cent of True and Full Value.

Table with columns: NAME OF OWNER, No. of School Dist., DESCRIPTION (SUBDIVISION, Sec. or Lot, Twp. or Block, Range), ASSESSOR'S VALUATIONS (True and Full Value of Land, Structures and Improvements, Machinery, Total True and Full Value, Assessed Value), EQUALIZED VALUATIONS (Assessed Value as Equalized by Board of Review, Assessed Value as Equalized by County Board, Assessed Value as Equalized by Minnesota Tax Commission).

Assessor's Return of Taxable Real Property in the Town of Sylvan, County of Cass, Minn., for the Year 1928. 15

Unplatted Real Estate—Assessed at 33 1-3 per cent of True and Full Value.

Table with columns: NAME OF OWNER, No. of School Dist., DESCRIPTION (SUBDIVISION, Sec. or Lot, Twp. or Block, Range), ASSESSOR'S VALUATIONS (True and Full Value of Land, Structures and Improvements, Machinery, Total True and Full Value, Assessed Value), EQUALIZED VALUATIONS (Assessed Value as Equalized by Board of Review, Assessed Value as Equalized by County Board, Assessed Value as Equalized by Minnesota Tax Commission).

Assessor's Return of Taxable Real Property in the Town of Sylvan, County of Cass, Minn., for the Year 1928.

Unplatted Real Estate—Assessed at 33 1-3 per cent of True and Full Value.

Table with columns: NAME OF OWNER, No. of School Dist., DESCRIPTION, ASSESSOR'S VALUATIONS (True and Full Value of Land, Structures and Improvements, Total True and Full Value), EQUALIZED VALUATIONS (Assessed Value as Equalized by Board of Review, Assessed Value as Equalized by County Board, Assessed Value as Equalized by Minnesota Tax Commission).

Assessor's Return of Taxable Real Property in the Town of Sylvan, County of Cass, Minn., for the Year 1928. 17

Unplatted Real Estate—Assessed at 33 1-3 per cent of True and Full Value.

Table with columns: NAME OF OWNER, No. of School Dist., DESCRIPTION, ASSESSOR'S VALUATIONS (True and Full Value of Land, Structures and Improvements, Total True and Full Value), EQUALIZED VALUATIONS (Assessed Value as Equalized by Board of Review, Assessed Value as Equalized by County Board, Assessed Value as Equalized by Minnesota Tax Commission).

Assessor's Return of Taxable Real Property in the Town of Sylvan, County of Cass, Minn., for the Year 1928.

Unplatted Real Estate—Assessed at 33 1-3 per cent of True and Full Value.

Table with columns: NAME OF OWNER, No. of School Dist., DESCRIPTION, ASSESSOR'S VALUATIONS (True and Full Value of Land, Structures and Improvements, Total True and Full Value of Land Including all Structures, Improvements and Machinery, Assessed Value of Land Including all Structures, Improvements and Machinery), EQUALIZED VALUATIONS (Assessed Value as Equalized by Board of Review, Assessed Value as Equalized by the County Board, Assessed Value as Equalized by the Minnesota Tax Commission).

Alvin O. Johnson's, Adolph Hagen's, John H. Hjelmer A. Lymann's, Clarence Lymann's

Assessor's Return of Taxable Real Property in the Town of Sylvan, County of Cass, Minn., for the Year 1928. 19

Unplatted Real Estate—Assessed at 33 1-3 per cent of True and Full Value.

Table with columns: NAME OF OWNER, No. of School Dist., DESCRIPTION, ASSESSOR'S VALUATIONS (True and Full Value of Land, Structures and Improvements, Total True and Full Value of Land Including all Structures, Improvements and Machinery, Assessed Value of Land Including all Structures, Improvements and Machinery), EQUALIZED VALUATIONS (Assessed Value as Equalized by Board of Review, Assessed Value as Equalized by the County Board, Assessed Value as Equalized by the Minnesota Tax Commission).

Martin Westfall

Peter Yde

William P. Robertson

Allie Goffney

Assessor's Return of Taxable Real Property in the Town of Sylvan, County of Cass, Minn., for the Year 1928.

Unplatted Real Estate—Assessed at 33 1-3 per cent of True and Full Value.

Table with columns: NAME OF OWNER, No. of School Dist., DESCRIPTION, SUBDIVISION, Sec. or Lot, Twp. or Block, Range, Number of Acres, ASSESSOR'S VALUATIONS (True and Full Value of Land, Structures and Improvements, Total True and Full Value of Land Including all Structures, Improvements and Machinery), Assessed Value of Land Including all Structures, Improvements and Machinery, EQUALIZED VALUATIONS (Assessed Value as Equalized by Board of Review, Assessed Value as Equalized by the County Board, Assessed Value as Equalized by the Minnesota Tax Commission).

Assessor's Return of Taxable Real Property in the Town of Sylvan, County of Cass, Minn., for the Year 1928.

Unplatted Real Estate—Assessed at 33 1-3 per cent of True and Full Value.

Table with columns: NAME OF OWNER, No. of School Dist., DESCRIPTION, SUBDIVISION, Sec. or Lot, Twp. or Block, Range, Number of Acres, ASSESSOR'S VALUATIONS (True and Full Value of Land, Structures and Improvements, Total True and Full Value of Land Including all Structures, Improvements and Machinery), Assessed Value of Land Including all Structures, Improvements and Machinery, EQUALIZED VALUATIONS (Assessed Value as Equalized by Board of Review, Assessed Value as Equalized by the County Board, Assessed Value as Equalized by the Minnesota Tax Commission).

Assessor's Return of Taxable Real Property in the Town of Sylvan, County of Cass, Minn., for the Year 1928.

Unplatted Real Estate—Assessed at 33 1-3 per cent of True and Full Value.

Table with columns: NAME OF OWNER, No. of School Dist., DESCRIPTION, ASSESSOR'S VALUATIONS (True and Full Value, Structures and Improvements, Total True and Full Value), EQUALIZED VALUATIONS (Assessed Value as Equalized by Board of Review, Assessed Value as Equalized by the County Board, Assessed Value as Equalized by the Minnesota Tax Commission).

Assessor's Return of Taxable Real Property in the Town of Sylvan, County of Cass, Minn., for the Year 1928. 23

Unplatted Real Estate—Assessed at 33 1-3 per cent of True and Full Value.

Table with columns: NAME OF OWNER, No. of School Dist., DESCRIPTION, ASSESSOR'S VALUATIONS (True and Full Value, Structures and Improvements, Total True and Full Value), EQUALIZED VALUATIONS (Assessed Value as Equalized by Board of Review, Assessed Value as Equalized by the County Board, Assessed Value as Equalized by the Minnesota Tax Commission).

Unplatted Real Estate—Assessed at 33 1-3 per cent of True and Full Value.

NAME OF OWNER	No. of School Dist.	DESCRIPTION	Sec. or Lot	Twp. or Block	Range	Number of Acres		ASSESSOR'S VALUATIONS					EQUALIZED VALUATIONS		
						Acres	100ths	True and Full Value of Lands Exclusive of Structures and Improvements Dollars	STRUCTURES AND IMPROVEMENTS		Total True and Full Value of Lands Including all Structures, Improvements and Machinery Dollars	Assessed Value of Lands Including all Structures, Improvements and Machinery Dollars	Assessed Value as Equalized by Board of Review Dollars	Assessed Value as Equalized by the County Board Dollars	Assessed Value as Equalized by the Minnesota Tax Commission Dollars
									True and Full Value of Buildings and Other Structures Dollars	True and Full Value of Machinery Permanently Attached to Real Estate Dollars					
Chas. B. Yezeck	1	NE 1/4 of NE 1/4	7	133	30	40	450	273	651	1101	305	367			
"	1	NW 1/4 of NE 1/4				40	375			375	125	206			
Dowen Lbr. Co.	1	SW 1/4 of NE 1/4				40	297			297	60	99			
"	1	SE 1/4 of NE 1/4				40	180			180	60	99			
William Gervels	1	NE 1/4 of NW 1/4				40	604			604	214	299			
"	1	NW 1/4 of NW 1/4				24 72	350	252		350	72	119			
Wm. G. Gervels	1	SW 1/4 of NW 1/4				44 96	370			370	90	149			
"	1	SE 1/4 of NW 1/4				40	351			351	117	193			
Anna J. Whipple	1	W. 20 Ac. of Lot 1				20	150	302		150	164	205			
Amiel Berndt	1	NE 1/4 of SW 1/4				40	313			313	121	200			
Wade H. Mathew	1	NW 1/4 of SW 1/4				45 21	252			252	94	155			
"	1	SW 1/4 of SW 1/4				45 47	252			252	94	155			
Amiel Berndt	1	SE 1/4 of SW 1/4				40	349			349	123	203			
Dowen Lbr. Co.	1	NE 1/4 of SE 1/4				40	604			604	122	201			
Geo. H. Riedel	1	NW 1/4 of SE 1/4				40	354			354	128	195			
"	1	SW 1/4 of SE 1/4				40	374	1300		374	668	639			
Dowen Lbr. Co.	1	SE 1/4 of SE 1/4				40	369			369	123	203			
						660 36	5184	2505		5184	2663	3677			

Unplatted Real Estate—Assessed at 33 1-3 per cent of True and Full Value.

NAME OF OWNER	No. of School Dist.	DESCRIPTION	Sec. or Lot	Twp. or Block	Range	Number of Acres		ASSESSOR'S VALUATIONS					EQUALIZED VALUATIONS		
						Acres	100ths	True and Full Value of Lands Exclusive of Structures and Improvements Dollars	STRUCTURES AND IMPROVEMENTS		Total True and Full Value of Lands Including all Structures, Improvements and Machinery Dollars	Assessed Value of Lands Including all Structures, Improvements and Machinery Dollars	Assessed Value as Equalized by Board of Review Dollars	Assessed Value as Equalized by the County Board Dollars	Assessed Value as Equalized by the Minnesota Tax Commission Dollars
									True and Full Value of Buildings and Other Structures Dollars	True and Full Value of Machinery Permanently Attached to Real Estate Dollars					
Oscar Hendrickson	1	NE 1/4 of NE 1/4	8	133	30	40	360			360	120	206			
Amiel Berndt	1	NW 1/4 of NE 1/4				40	354			354	125	211			
"	1	SW 1/4 of NE 1/4				40	370			370	90	149			
Herm W. Gervels	1	SE 1/4 of NE 1/4				40	352			352	122	198			
Dowen Lbr. Co.	1	NE 1/4 of NW 1/4				40	198	1101		198	407	433			
"	1	NW 1/4 of NW 1/4				40	120			120	40	66			
"	1	SW 1/4 of NW 1/4				40	300			300	100	165			
"	1	SE 1/4 of NW 1/4				48	300			300	100	165			
"	1	NE 1/4 of SW 1/4				40	350			350	130	210			
"	1	NW 1/4 of SW 1/4				42	390			390	130	215			
"	1	SW 1/4 of SW 1/4				40	381			381	122	210			
"	1	SE 1/4 of SW 1/4				40	351			351	127	210			
Herm W. Gervels	1	NE 1/4 of SE 1/4				40	624			624	126	209			
"	1	NW 1/4 of SE 1/4				40	353			353	132	218			
"	1	SW 1/4 of SE 1/4				40	402			402	124	221			
"	1	SE 1/4 of SE 1/4				40	330			330	110	182			
						640	5388	1101		5388	2169	3333			

Assessor's Return of Taxable Real Property in the Town of Sylvan, County of Cass, Minn., for the Year 1928.

Unplatted Real Estate—Assessed at 33 1-3 per cent of True and Full Value.

Table with columns: NAME OF OWNER, No. of School Dist., DESCRIPTION, SUBDIVISION, Sec. or Lot, Twp. or Block, Range, Number of Acres, ASSESSOR'S VALUATIONS (True and Full Value, Structures and Improvements, Total True and Full Value), ASSESSED VALUE (Assessed Value as Equalized by Board of Review, Assessed Value as Equalized by County Board, Assessed Value as Equalized by Minnesota Tax Commission).

Assessor's Return of Taxable Real Property in the Town of Sylvan, County of Cass, Minn., for the Year 1928. 27

Unplatted Real Estate—Assessed at 33 1-3 per cent of True and Full Value.

Table with columns: NAME OF OWNER, No. of School Dist., DESCRIPTION, SUBDIVISION, Sec. or Lot, Twp. or Block, Range, Number of Acres, ASSESSOR'S VALUATIONS (True and Full Value, Structures and Improvements, Total True and Full Value), ASSESSED VALUE (Assessed Value as Equalized by Board of Review, Assessed Value as Equalized by County Board, Assessed Value as Equalized by Minnesota Tax Commission).

Assessor's Return of Taxable Real Property in the Town of Sylvania, County of Cass, Minn., for the Year 1928.

Unplatted Real Estate—Assessed at 33 1-3 per cent of True and Full Value.

Table with columns: NAME OF OWNER, No. of School Dist., DESCRIPTION, ASSESSOR'S VALUATIONS (True and Full Value of Land, Structures and Improvements, Total True and Full Value of Land), and EQUALIZED VALUATIONS (Assessed Value as Equalized by Board of Review, Assessed Value as Equalized by the County Board, Assessed Value as Equalized by the Minnesota Tax Commission).

Assessor's Return of Taxable Real Property in the Town of Sylvania, County of Cass, Minn., for the Year 1928.

Unplatted Real Estate—Assessed at 33 1-3 per cent of True and Full Value.

Table with columns: NAME OF OWNER, No. of School Dist., DESCRIPTION, ASSESSOR'S VALUATIONS (True and Full Value of Land, Structures and Improvements, Total True and Full Value of Land), and EQUALIZED VALUATIONS (Assessed Value as Equalized by Board of Review, Assessed Value as Equalized by the County Board, Assessed Value as Equalized by the Minnesota Tax Commission).

Assessor's Return of Taxable Real Property in the Town of Sylwan, County of Cass, Minn., for the Year 1928.

Unplatted Real Estate—Assessed at 33 1-3 per cent of True and Full Value.

Table with columns: NAME OF OWNER, No. of School Dist., DESCRIPTION, ASSESSOR'S VALUATIONS (True and Full Value of Land, Structures and Improvements, Total True and Full Value of Land Including all Structures, Improvements and Machinery), EQUALIZED VALUATIONS (Assessed Value as Equalized by Board of Review, Assessed Value as Equalized by the County Board, Assessed Value as Equalized by the Minnesota Tax Commission).

Assessor's Return of Taxable Real Property in the Town of Sylwan, County of Cass, Minn., for the Year 1928. 31

Unplatted Real Estate—Assessed at 33 1-3 per cent of True and Full Value.

Table with columns: NAME OF OWNER, No. of School Dist., DESCRIPTION, ASSESSOR'S VALUATIONS (True and Full Value of Land, Structures and Improvements, Total True and Full Value of Land Including all Structures, Improvements and Machinery), EQUALIZED VALUATIONS (Assessed Value as Equalized by Board of Review, Assessed Value as Equalized by the County Board, Assessed Value as Equalized by the Minnesota Tax Commission).

Assessor's Return of Taxable Real Property in the Town of Sylvan, County of Cass, Minn., for the Year 1928.

Unplatted Real Estate—Assessed at 33 1-3 per cent of True and Full Value.

Table with columns: NAME OF OWNER, No. of School Dist., DESCRIPTION, ASSESSOR'S VALUATIONS (STRUCTURES AND IMPROVEMENTS, Total True and Full Value of Land, Assessed Value of Land), EQUALIZED VALUATIONS (Assessed Value as Equalized by Board of Review, Assessed Value as Equalized by the County Board, Assessed Value as Equalized by the Minnesota Tax Commission).

5113 3099 355 93 1281 6394 4380 299 1460 1281 2131

Assessor's Return of Taxable Real Property in the Town of Sylvan, County of Cass, Minn., for the Year 1928.

Unplatted Real Estate—Assessed at 33 1-3 per cent of True and Full Value.

Table with columns: NAME OF OWNER, No. of School Dist., DESCRIPTION, ASSESSOR'S VALUATIONS (STRUCTURES AND IMPROVEMENTS, Total True and Full Value of Land, Assessed Value of Land), EQUALIZED VALUATIONS (Assessed Value as Equalized by Board of Review, Assessed Value as Equalized by the County Board, Assessed Value as Equalized by the Minnesota Tax Commission).

400 33 5624 3044 1201 6225 4245 1415 2075

Assessor's Return of Taxable Real Property in the Town of Sylvan, County of Cass, Minn., for the Year 1928.

Unplatted Real Estate—Assessed at 33 1-3 per cent of True and Full Value.

Table with columns: NAME OF OWNER, No. of School Dist., DESCRIPTION, SUBDIVISION, ASSESSOR'S VALUATIONS (True and Full Value of Land, Structures and Improvements, Total True and Full Value), EQUALIZED VALUATIONS (Assessed Value as Equalized by Board of Review, Assessed Value as Equalized by the County Board, Assessed Value as Equalized by the Minnesota Tax Commission).

Assessor's Return of Taxable Real Property in the Town of Sylvan, County of Cass, Minn., for the Year 1928. 35

Unplatted Real Estate—Assessed at 33 1-3 per cent of True and Full Value.

Table with columns: NAME OF OWNER, No. of School Dist., DESCRIPTION, SUBDIVISION, ASSESSOR'S VALUATIONS (True and Full Value of Land, Structures and Improvements, Total True and Full Value), EQUALIZED VALUATIONS (Assessed Value as Equalized by Board of Review, Assessed Value as Equalized by the County Board, Assessed Value as Equalized by the Minnesota Tax Commission).

Assessor's Return of Taxable Real Property in the Town of Sylvan, County of Cass, Minn., for the Year 1928.

Unplatted Real Estate—Assessed at 33 1-3 per cent of True and Full Value.

Table with columns: NAME OF OWNER, No. of School Dist., DESCRIPTION, ASSESSOR'S VALUATIONS (True and Full Value of Lands, Structures and Improvements, Total True and Full Value), EQUALIZED VALUATIONS (Assessed Value as Equalized by Board of Review, Assessed Value as Equalized by the County Board, Assessed Value as Equalized by the Minnesota Tax Commission).

525 07 8120 4721 411 8231 6632 1844

2911

Assessor's Return of Taxable Real Property in the Town of Sylvan, County of Cass, Minn., for the Year 1928. 37

Unplatted Real Estate—Assessed at 33 1-3 per cent of True and Full Value.

Table with columns: NAME OF OWNER, No. of School Dist., DESCRIPTION, ASSESSOR'S VALUATIONS (True and Full Value of Lands, Structures and Improvements, Total True and Full Value), EQUALIZED VALUATIONS (Assessed Value as Equalized by Board of Review, Assessed Value as Equalized by the County Board, Assessed Value as Equalized by the Minnesota Tax Commission).

240 50 4958 2319 44746 55996 92919 50000 142823 108315 36105

47609 36600

Assessor's Return of Taxable Real Property in the Town of Sylvania, County of Cass, Minn., for the Year 1928.

Unplatted Real Estate—Assessed at 33 1-3 per cent of True and Full Value.

Table with columns: NAME OF OWNER, No. of School Dist., DESCRIPTION, ASSESSOR'S VALUATIONS (True and Full Value, Structures and Improvements, Total True and Full Value, Assessed Value of Land), EQUALIZED VALUATIONS (Assessed Value as Equalized by Board of Review, Assessed Value as Equalized by County Board, Assessed Value as Equalized by Minnesota Tax Commission).

302 25 3015 3039 3675 8690 6714 2238

2895

223 135 170783 193701 +3004

Grand Total

40 35 668 405 668 405 135 19,560 01 215,280 168,061 138,073 581,012

Assessor's Return of Taxable Real Property in the Town of Sylvania, County of Cass, Minn., for the Year 1928. 39

Unplatted Real Estate—Assessed at 33 1-3 per cent of True and Full Value.

Table with columns: NAME OF OWNER, No. of School Dist., DESCRIPTION, ASSESSOR'S VALUATIONS (True and Full Value, Structures and Improvements, Total True and Full Value, Assessed Value of Land), EQUALIZED VALUATIONS (Assessed Value as Equalized by Board of Review, Assessed Value as Equalized by County Board, Assessed Value as Equalized by Minnesota Tax Commission).

P. R. Ring

Minn. Power & Light Co.

223 135 170783 193701 +3004

Assessor's Return of Taxable Real Property in the Town of Sylvan, County of Cass, Minn., for the Year 1928.

Platted Real Estate—Assessed at 40 per cent of True and Full Value. Note—Attached Machinery Assessed at 33 1-3 per cent of True and Full Value.

NAME OF OWNER	No. of School Dist.	DESCRIPTION					ASSESSOR'S VALUATIONS					EQUALIZED VALUATIONS		
		SUBDIVISION	Sec. or Lot	Twp. or Block	Range	Number of Acres	True and Full Value of Lands Exclusive of Structures and Improvements Dollars	STRUCTURES AND IMPROVEMENTS True and Full Value of Buildings and Other Structures Dollars	True and Full Value of Machinery Permanently Attached to Real Estate Dollars	Total True and Full Value of Lands Including all Structures, Improvements and Machinery Dollars	Assessed Value of Lands Including all Structures, Improvements and Machinery Dollars	Assessed Value as Equalized by Board of Review Dollars	Assessed Value as Equalized by the County Board Dollars	Assessed Value as Equalized by the Minnesota Tax Commission Dollars
<i>George Ramsey</i>	1	<i>Village of Sylvan</i>	1	1	30	160	127		143	50			57	
"	"	"	2	1		100	115		120	4			6	
"	"	"	3	1		100			100	4			6	
"	"	"	4	1		100			100	4			6	
"	"	"	5	1		100			100	4			6	
"	"	"	6	1		100			100	4			6	
"	"	"	7	1		100			100	4			6	
<i>S. M. Tollefson</i>	1	"	8	1		100			100	4			6	
"	1	"	9	1		100			100	4			6	
<i>Andrew H. Lee</i>	1	"	10	1		100			100	4			6	
"	1	"	11	1		100			100	4			6	
"	1	"	12	1		100			100	4			6	
"	1	"	13	1		100			100	4			6	
"	1	"	14	1		100			100	4			6	
"	1	"	15	1		100			100	4			6	
"	1	"	16	1		100			100	4			6	
<i>Andrew Olson</i>	1	"	17	1		100			100	4			6	
<i>Wm. Gorman</i>	1	"	18	1		100			100	4			6	
<i>Andrew Olson</i>	1	"	19	1		100			100	4			6	
"	1	"	20	1		100			100	4			6	
<i>Chas. H. Johnson</i>	1	"	21	1		100			100	4			6	
"	1	"	22	1		100			100	4			6	
						350	75		655	22			26	
						230	160		610	4			6	
							127		380	72			203	

42 Assessor's Return of Taxable Real Property in the Town of Sylvan, County of Cass, Minn., for the Year 1928.
 Platted Real Estate—Assessed at 40 per cent of True and Full Value. Note—Attached Machinery Assessed at 33 1-3 per cent of True and Full Value.

NAME OF OWNER	No. of School Dist.	SUBDIVISION	Sec. or Lot	Twp. or Block	Range	Number of Acres		ASSESSOR'S VALUATIONS				EQUALIZED VALUATIONS					
						Acres	100ths	True and Full Value of Lands Exclusive of Structures and Improvements Dollars	STRUCTURES AND IMPROVEMENTS True and Full Value of Buildings and Other Structures Dollars	True and Full Value of Machinery Permanently Attached to Real Estate Dollars	Total True and Full Value of Lands Including all Structures, Improvements and Machinery Dollars	Assessed Value of Lands Including all Structures, Improvements and Machinery Dollars	Assessed Value as Equalized by Board of Review Dollars	Assessed Value as Equalized by the County Board Dollars	Assessed Value as Equalized by the Minnesota Tax Commission Dollars		
Andrew H. Lee	1	Village of Sylvan	1	2				166			160	4	6				
"	1		2					166			160	4	6				
E. Gertrude Roberts	1		3					166			160	4	6				
"	1		4					166			160	4	6				
Wm. Gorman	1		5					160			160	4	6				
Town of Sylvan	1		6														
"	1		7														
"	1		8														
"	1		9														
"	1		10		Exempt												
"	1		11														
"	1		12														
"	1		13														
"	1		14														
Wm. Gorman	1		15					166			160	4	6				
"	1		16					166			160	4	6				
"	1		17					166			160	4	6				
C. H. Johnson	1		18					170	32	100	130	52	55				
"	1		19					106	20		126	52	55				
Andrew H. Lee	1		20					106	688		694	346	387				
"	1		21					106			160	4	6				
"	1		22					106			160	4	6				
								130	658	100	1098	358	408				
								688			1033						

Assessor's Return of Taxable Real Property in the Town of Sylvan, County of Cass, Minn., for the Year 1928. 43
 Platted Real Estate—Assessed at 40 per cent of True and Full Value. Note—Attached Machinery Assessed at 33 1-3 per cent of True and Full Value.

NAME OF OWNER	No. of School Dist.	SUBDIVISION	Sec. or Lot	Twp. or Block	Range	Number of Acres		ASSESSOR'S VALUATIONS				EQUALIZED VALUATIONS					
						Acres	100ths	True and Full Value of Lands Exclusive of Structures and Improvements Dollars	STRUCTURES AND IMPROVEMENTS True and Full Value of Buildings and Other Structures Dollars	True and Full Value of Machinery Permanently Attached to Real Estate Dollars	Total True and Full Value of Lands Including all Structures, Improvements and Machinery Dollars	Assessed Value of Lands Including all Structures, Improvements and Machinery Dollars	Assessed Value as Equalized by Board of Review Dollars	Assessed Value as Equalized by the County Board Dollars	Assessed Value as Equalized by the Minnesota Tax Commission Dollars		
George Ramsey	1	North Sylvan Lake	11	1				32			32		6				
"	1		12					30			30		6				13
								20			20		6				13
								64			64		18				26

Platted Real Estate—Assessed at 40 per cent of True and Full Value. Note—Attached Machinery Assessed at 33 1-3 per cent of True and Full Value.

No. of School Dist.	NAME OF OWNER	SUBDIVISION	Sec. or Lot	Twp. or Block	Range	Number of Acres	ASSESSOR'S VALUATIONS				EQUALIZED VALUATIONS		
							True and Full Value of Land Exclusive of Structures and Improvements Dollars	STRUCTURES AND IMPROVEMENTS True and Full Value of Buildings and Other Structures Dollars	True and Full Value of Machinery Permanently Attached to Real Estate Dollars	Total True and Full Value of Land Including all Structures, Improvements and Machinery Dollars	Assessed Value as Equalized by Board of Review Dollars	Assessed Value as Equalized by the County Board Dollars	Assessed Value as Equalized by the Minnesota Tax Commission Dollars
1	Roseae C. Carlson	<i>Carlson's Sylvan Park</i>	1	133	30	1.59	100		159	40		64	
1	"		2	"	"	1.59	100		159	40		64	
1	"		3	"	"	1.59	100		159	40		64	
1	"	<i>N/4 and N/2 S/4 of</i>	4	"	"	1.59	75		159	40		64	
1	Anna M. Gay	<i>S/4 of S/4 of</i>	4	"	"	1.59	25		159	40		64	
1	Roseae C. Carlson	<i>N/2 of</i>	5	"	"	1.59	50		159	40		64	
1	Louise Harris	<i>S/2 of</i>	5	"	"	1.59	50		159	40		64	
1	Geo. R. + Nora S. Smith	<i>N/4 of</i>	6	"	"	1.59	50	747	159	40		64	
1	Roseae C. Carlson	<i>S/2 of</i>	6	"	"	1.59	50		159	40		64	
1	Walter Anderson	<i>E 1/2 of</i>	7	"	"	1.59	50	192	159	40		64	
1	Roseae C. Carlson	<i>N/2 of</i>	7	"	"	1.59	50		159	40		64	
1	"		8	"	"	1.59	100		159	40		64	
1	"		9	"	"	1.59	100		159	40		64	
1	"		10	"	"	1.59	100		159	40		64	
1	Robert J. Sweet	<i>E 1/2 of</i>	11	"	"	1.59	50	148	159	40		64	
1	Charles Johnson	<i>N/2 of</i>	11	"	"	1.59	50	148	159	40		64	
1	Roseae C. Carlson		12	"	"	1.59	100		159	40		64	
1	"		13	"	"	1.59	100		159	40		64	
1	"	<i>E 1/2 of</i>	14	"	"	1.59	50		159	40		64	
1	A. C. Lundgren	<i>N/2 of</i>	14	"	"	1.59	50	893	159	40		64	
						1400	1475		2875	425		425	
						2231	1622		3853			1544	

Platted Real Estate—Assessed at 40 per cent of True and Full Value. Note—Attached Machinery Assessed at 33 1-3 per cent of True and Full Value.

No. of School Dist.	NAME OF OWNER	SUBDIVISION	Sec. or Lot	Twp. or Block	Range	Number of Acres	ASSESSOR'S VALUATIONS				EQUALIZED VALUATIONS		
							True and Full Value of Land Exclusive of Structures and Improvements Dollars	STRUCTURES AND IMPROVEMENTS True and Full Value of Buildings and Other Structures Dollars	True and Full Value of Machinery Permanently Attached to Real Estate Dollars	Total True and Full Value of Land Including all Structures, Improvements and Machinery Dollars	Assessed Value as Equalized by Board of Review Dollars	Assessed Value as Equalized by the County Board Dollars	Assessed Value as Equalized by the Minnesota Tax Commission Dollars
1	Peter Shock	<i>Carlson's Sylvan Park</i>	6	133	30	1.59	50	506	159	40		64	
1	Roseae C. Carlson	<i>E 1/2 of</i>	15	133	30	1.59	50	460	159	40		64	
1	"	<i>N/2 of</i>	15	133	30	1.59	50		159	40		64	
1	"	<i>Cottage</i>	16	"	"	1.59	50		159	40		64	
1	"		17	"	"	1.59	50	132	159	40		64	
1	"		18	"	"	1.59	50		159	40		64	
1	"		19	"	"	1.59	50		159	40		64	
1	"		20	"	"	1.59	50		159	40		64	
1	"	<i>Days Cottage</i>	21	"	"	1.59	50	150	159	40		64	
1	"		22	"	"	1.59	50	135	159	40		64	
1	"		23	"	"	1.59	50		159	40		64	
1	"		24	"	"	1.59	50		159	40		64	
1	"	<i>S/4 of</i>	30	"	"	1.59	50		159	40		64	
1	"		31	"	"	1.59	50		159	40		64	
1	"		32	"	"	1.59	50		159	40		64	
1	"		33	"	"	1.59	50		159	40		64	
1	"		34	"	"	1.59	50		159	40		64	
1	"		35	"	"	1.59	50		159	40		64	
1	"		36	"	"	1.59	50		159	40		64	
1	"		37	"	"	1.59	50		159	40		64	
1	"		38	"	"	1.59	50		159	40		64	
						760	715		1475	590		590	
						1216	738		2004			803	

46 Assessor's Return of Taxable Real Property in the Town of Sylvan, County of Cass, Minn., for the Year 1928.

Platted Real Estate—Assessed at 40 per cent of True and Full Value. Note—Attached Machinery Assessed at 33 1-3 per cent of True and Full Value.

NAME OF OWNER	No. of School Dist.	SUBDIVISION	DESCRIPTION			ASSESSOR'S VALUATIONS					EQUALIZED VALUATIONS			
			Sec. or Lot	Twp. or Block	Range	Number of Acres	True and Full Value of Land Exclusive of Structures and Improvements Dollars	STRUCTURES AND IMPROVEMENTS		Total True and Full Value of Land Including all Structures, Improvements and Machinery Dollars	Assessed Value of Land Including all Structures, Improvements and Machinery Dollars	Assessed Value as Equalized by Board of Review Dollars	Assessed Value as Equalized by the County Board Dollars	Assessed Value as Equalized by the Minnesota Tax Commission Dollars
								True and Full Value of Buildings and Other Structures Dollars	Value of Machinery Permanently Attached to Real Estate Dollars					
Rosee E. Carlson	1	Carlson's Sylvan Park	39	133	30								13	
"	1		40	"	"								13	
"	1		41	"	"								13	
"	1		42	"	"								13	
C. M. Nash	1		43	"	"								13	
"	1		44	"	"								13	
Rosee E. Carlson	1		45	"	"								13	
"	1		46	"	"								13	
"	1		47	"	"								13	
"	1		48	"	"								13	
"	1	Slough	49	"	"								13	
"	1		50	"	"								64	
"	1		51	"	"								64	
"	1		52	"	"								64	
Edmar P. Carries	1		53	"	"	159	202	361	420				144	
Rosee E. Carlson	1		54	"	"	100	184	284	384				80	
J. J. Hoell	1		55	"	"	159	38	197	235				559	
"	1		56	"	"	100	1126	1226	1596				16	
"	1		57	"	"								16	
"	1		58	"	"								16	
						895	1348	2243	2847				1166	
						1426	1483	2909						

Assessor's Return of Taxable Real Property in the Town of Sylvan, County of Cass, Minn., for the Year 1928. 47

Platted Real Estate—Assessed at 40 per cent of True and Full Value. Note—Attached Machinery Assessed at 33 1-3 per cent of True and Full Value.

NAME OF OWNER	No. of School Dist.	SUBDIVISION	DESCRIPTION			ASSESSOR'S VALUATIONS					EQUALIZED VALUATIONS			
			Sec. or Lot	Twp. or Block	Range	Number of Acres	True and Full Value of Land Exclusive of Structures and Improvements Dollars	STRUCTURES AND IMPROVEMENTS		Total True and Full Value of Land Including all Structures, Improvements and Machinery Dollars	Assessed Value of Land Including all Structures, Improvements and Machinery Dollars	Assessed Value as Equalized by Board of Review Dollars	Assessed Value as Equalized by the County Board Dollars	Assessed Value as Equalized by the Minnesota Tax Commission Dollars
								True and Full Value of Buildings and Other Structures Dollars	True and Full Value of Machinery Permanently Attached to Real Estate Dollars					
Rosee E. Carlson	1	Carlson's Sylvan Park	59	133	30								16	
"	1		60	"	"								16	
"	1		61	"	"								16	
"	1		62	"	"								16	
"	1		63	"	"								16	
"	1		64	"	"								16	
"	1		65	"	"								16	
"	1		66	"	"								16	
"	1		67	"	"								16	
"	1		68	"	"								16	
"	1		69	"	"								16	
"	1		70	"	"								16	
"	1		71	"	"								16	
"	1		72	"	"								16	
"	1		73	"	"								16	
"	1		74	"	"								16	
"	1		75	"	"								16	
"	1		76	"	"								16	
"	1		77	"	"								16	
"	1		78	"	"								16	
"	1		79	"	"								16	
"	1		80	"	"								16	
							431		590				153	
							383		483				232	
							403		483				568	

Platted Real Estate—Assessed at 40 per cent of True and Full Value. Note—Attached Machinery Assessed at 33 1-3 per cent of True and Full Value.

Table with columns: NAME OF OWNER, No. of School Dist., DESCRIPTION, SUBDIVISION, Sec. or Lot, Twp. or Block, Range, Number of Acres, ASSESSOR'S VALUATIONS (True and Full Value of Land, Structures and Improvements, Total True and Full Value), and EQUALIZED VALUATIONS (Assessed Value as Equalized by Board of Review, Assessed Value as Equalized by the County Board, Assessed Value as Equalized by the Minnesota Tax Commission).

Platted Real Estate—Assessed at 40 per cent of True and Full Value. Note—Attached Machinery Assessed at 33 1-3 per cent of True and Full Value.

Table with columns: NAME OF OWNER, No. of School Dist., DESCRIPTION, SUBDIVISION, Sec. or Lot, Twp. or Block, Range, Number of Acres, ASSESSOR'S VALUATIONS (True and Full Value of Land, Structures and Improvements, Total True and Full Value), and EQUALIZED VALUATIONS (Assessed Value as Equalized by Board of Review, Assessed Value as Equalized by the County Board, Assessed Value as Equalized by the Minnesota Tax Commission).

Platted Real Estate—Assessed at 40 per cent of True and Full Value. Note—Attached Machinery Assessed at 33 1-3 per cent of True and Full Value.

NAME OF OWNER	No. of School Dist.	DESCRIPTION	ASSESSOR'S VALUATIONS					EQUALIZED VALUATIONS			REMARKS		
			SUBDIVISION	Sec. or Lot	Twp. or Block	Range	Number of Acres (Acres, 100ths)	True and Full Value of Lands Exclusive of Structures and Improvements	STRUCTURES AND IMPROVEMENTS (True and Full Value of Buildings and Other Structures, True and Full Value of Machinery Permanently Attached to Real Estate)	Total True and Full Value of Lands Including all Structures, Improvements and Machinery		Assessed Value of Lands Including all Structures, Improvements and Machinery	Assessed Value as Equalized by Board of Review

Number of Acres of Land Assessed	ASSESSOR'S VALUATIONS					EQUALIZED VALUATIONS			REMARKS	
	Acres	100ths	True and Full Value of Lands Exclusive of Structures and Improvements	STRUCTURES AND IMPROVEMENTS (True and Full Value of Buildings and Other Structures, True and Full Value of Machinery Permanently Attached to Real Estate)	Total True and Full Value of Lands Including all Structures, Improvements and Machinery	Assessed Value of Lands Including all Structures, Improvements and Machinery	Assessed Value as Equalized by Board of Review	Assessed Value as Equalized by the County Board		Assessed Value as Equalized by the Minnesota Tax Commission
Unplatted										
Amount Brought Forward from Page	7	662	24	6072	6014	1888	3688	3697		
" " " " " 2	2	625	02	5548	2987	8507	3938	2989		
" " " " " 3	3	475	56	3432	3699	3432	1144	1144		
" " " " " 4	4	642	66	5438	3777	8233	3727	2709		
" " " " " 5	5	640		6005	997	7002	2334	2334		
" " " " " 6	6	538	32	4953	2680	6633	2211	2211		
" " " " " 7	7	632		6196	1809	7292	2304	2304		
" " " " " 8	8	566	61	6150	3363	9510	3171	3171		
" " " " " 9	9	21	61	375	746	1116	372	372		
" " " " " 10	10	393	24	5577	5349	6403	1876	6403		
" " " " " 11	11	647	69	6282		6282	2094	2094		
" " " " " 12	12	640		6264		6264	2088	2088		
" " " " " 13	13	640		5826	522	6348	2116	2116		
" " " " " 14	14	580	95	4614	1401	6015	2005	2005		
" " " " " 15	15	502	85	4893	1050	5943	1981	1981		
" " " " " 16	16	201	25	2742	51000	45000	98742	32914		
" " " " " 17	17	438	85	2883	1710	4593	1531	1531		
" " " " " 18	18	55	50	279		279	93	93		
" " " " " 19	19	519	85	3473	751	4224	1408	1408		
Page total		9534	20	89957	4490	209937	69977	69977		

