

ASSESSMENT & TAX LIST - 1960

Sylvan

SUMMARY OF TAX COLLECTION

Original Levy	- - - - -	\$ 47,904.20	
Additions	- - - - -	\$ 31.68	
			\$ 47,935.88
Abatements	- - - - -	\$ 97.64	
			\$ 47,838.24

COLLECTIONS

March Settlement	- - - - -	\$ 24,321.84	
June Settlement	- - - - -	\$ 24,731.87	
November Settlement	- - - - -	\$ 19,128.28	
January Settlement	- - - - -	\$ 179.20	\$ 46,473.19
			\$
Over Collected	- - - - -	\$ 3.02	
Under Collected	- - - - -	\$	
Delinquent	- - - - -	\$ 1365.07	\$ 1365.05
Total	- - - - -		\$ 47,838.24

Sylvan Beach Short 135-50 & Village of Sylvan 4th Sylvan Lake
 Sylvan's Sylvan Park
 Sylvan Beach

COLLECTIONS OF TAXES OF 1960 *Town* OF *Sylvan*, CASS COUNTY, MINNESOTA

FUNDS	MARCH SETTLEMENT 1961	JUNE SETTLEMENT 1961	NOV. SETTLEMENT 1961	Amount Collected from Nov. 19... to First Monday in Jan. 19...	REDUCTIONS	Total Reductions and Collected	BALANCE UNCOLLECTED	ADDITIONS	Total Uncollected to First Monday in January, 19...
State—Non-Homestead	3364	46686	36339	205					
State—Homestead	3657	54925	41822	425					
County Revenue	27576	268411	205921	2084					
County Road and Bridge	16563	161208	123676	1243					
County Welfare	48063	467824	358909	3607					
County Bond and Interest <i>PERA</i>	4662	45380	34815	350					
Civil Def.	190	1853	1422	14					
Co. Nurse	1656	16121	12368	124					
R. & B. Bldg.	1656	16121	12368	124					
Town Revenue	4140	40302	30919	311					
Town Road and Bridge	13249	128966	98941	994					
Town Drag									
Town State Loan									
School Local 1 Mill									
School Special	26864	332381	270222	1553					
School State Loan									
Deficiency	54455	530051	406648	4086					
Tuition Title 3	4746	46187	35434	356					
Transportation									
<i>C.O.</i>	3952	36513	28013	282					
<i>PERA</i>	1432	13944	10697	108					
<i>B. & Int.</i>	26945	262284	201222	2022					
<i>Ague. Assn.</i>	414	4030	3092	32					
	243384	2473187	1912828	17920					

	School District No.	LOCAL 1 MILL	SPECIAL	STATE LOAN	<i>Local</i>	<i>C.O.</i>	<i>PERA</i>	<i>B. & Int.</i>	<i>Title 3</i>	TOTALS
MARCH SETTLEMENT	116-a		14540		37246	2635	4046	18725	3333	78685
	116-na		12324		16209	1117	426	8020	1418	39509
	Totals		26864		54455	3752	1432	26945	4746	118194
JUNE SETTLEMENT	116-a		70639		185809	12800	4888	91944	16192	382272
	116-na		261742		344242	23713	9056	171340	29990	839088
	Totals		332381		530051	36513	13944	262284	46187	1221360
NOVEMBER SETTLEMENT	116a		38968		102502	7061	2696	50721	8932	210880
	116-na		231254		304146	20952	8001	150501	26502	741356
	Totals		270222		406648	28013	10697	201222	35434	952236
NOVEMBER to JANUARY	116a		1553		4086	282	108	2022	356	8407
	Totals		1553		4086	282	108	2022	356	8407
ADDITIONS	School District No.									
	Totals									
REDUCTIONS	School District No.									
	Totals									

Sylvan's Steady State 133-30 & Village of Sylvan
 14th Sylvan
 Sylvan Park
 Sylvan Beach

Assessment Roll and Tax List of Real Property in the Town of Sylvan

* Indicate Type of Property: R-Residential, C-Commercial, I-Industrial, U-Utility, F-Farm, L-Lakeshore, T-Timber, M-Military

Table with columns: IN WHOSE NAME ASSESSED, DESCRIPTION OF PROPERTY, TRUCK AND FULL VALUATIONS, ASSESSED VALUATIONS, and FINAL EQUALIZED VALUE. Includes handwritten entries for Charles H. & Caroline Peterson, Harold Le Roy & Irene Peterson, George & Lucy Clark, and Minnesota Power & Light Co.

Cass County, Minnesota, for Taxes for the Year 1960.

Table with columns: VALUATIONS BY SCHOOL DISTRICTS AS EQUALIZED BY DEPARTMENT OF TAXATION, TAX INCLUDING STATE HOMESTEAD, SPECIAL TAXES, TOTAL TAXES, PAID, WHEN PAID, Number of Receipts, March Settlement, June Settlement, November Settlement, Collections to First Monday in January 1962, Delinquent on First Monday in January 1962, Total Delinquent Tax and Penalty, and REMARKS. Includes handwritten entries for tax payments and settlements.

Assessment Roll and Tax List of Real Property in the Town of Sylva, Cass County, Minnesota

* Indicate Type of Property: R-Residential, C-Commercial, I-Industrial, U-Utility, F-Farm, L-Lakeshore, T-Timber, M-Mineral

Cass County, Minnesota, for Taxes for the Year 1960.

Table with columns: IN WHOSE NAME ASSESSED, DESCRIPTION OF PROPERTY, TRUE AND FULL VALUATIONS (LAND, BUILDINGS, MACHINERY, TOTAL), ASSESSED VALUATIONS (RURAL, ALL OTHER), and FINAL EQUALIZED VALUE.

Table with columns: SCHOOL DISTRICTS AS EQUALIZED BY DEPARTMENT OF TAXATION, TAXES (SPECIAL, TOTAL), PAID, WHEN PAID, Settlements (March, June, November), and REMARKS.

Vertical text on the right edge of the page: Sylva's Shady Shore, 133-30, Village of Sylva, 1st Sylva Park, Sylva's Sylva Park, Sylva Beach.

Assessment Roll and Tax List of Real Property in the Town of Sylva

* Indicate Type of Property: R-Residential, C-Commercial, I-Industrial, U-Utility, F-Farm, L-Lakeshore, T-Timber, M-Mineral

Cass County, Minnesota, for Taxes for the Year 1960.

All that part of Sec. 17-133-29 lying above 1186' contour line running across said tract, which is 1186' above the sea level elevation as established by the Mississippi River Commission, being approximately 20 acres in the Northern Pacific Right of way, and certain one acre tract owned and occupied by School District #1 of Cass County, Minnesota, keeping the south 15 rods of the E 1/4 of Sec. 17, T. 133 N., R. 29 W.

Main table with columns: IN WHOSE NAME ASSESSED, No. School District, Indicate Home, Indicate Acres, Indicate Type of Property, TRUE AND FULL VALUATIONS (LAND, BUILDINGS, MACHINERY, TOTAL), ASSESSED VALUATIONS (RURAL, ALL OTHER, MACHINERY, Seasonal and Recreational Cabins, TOTAL ASSESSED VALUE, Total Assessed Value as Equalized by the Board of Review, FINAL EQUALIZED VALUE), VALUATIONS BY SCHOOL DISTRICTS AS EQUALIZED BY DEPARTMENT OF TAXATION (District No., Rate, District No., Rate, District No., Rate, District No., Rate), Tax Including State Homestead, State Tax on Non-Homestead, SPECIAL TAXES, SPECIAL TAXES, TOTAL TAXES, PAID, WHEN PAID, Number of Receipt, March Settlement 1961, June Settlement 1961, November Settlement 1961, Collections in First Monday in January 1962, Delinquent on First Monday in January 1962, Total Delinquent Tax and Penalty, REMARKS.

John A. Miller
Minnesota Power & Light Co.
Home, Abner & Emily J. Timball
Carynna Ranger Lower Co.
Martin & Bertha A. Phillips
Roger Peterson
Roger & Laura Peterson
Minnesota Power & Light Co.
Roger & Laura Peterson
Roger Robert & Laura Peterson
Minnesota Power & Light Co.
Albert J. Cunningham
Minnesota Power & Light Co.

(Continued on next page)

John A. Miller, Shady Grove, 133-29, 1st & 1/2 Mileage of Sylva, John Sylva, Park, Sylva Beach

Assessment Roll and Tax List of Real Property in the South of Sylvan

* Indicate Type of Property: R-Residential, C-Commercial, I-Industrial, U-Utility, F-Farm, L-Lakeshore, T-Timber, M-Mineral

Form 501 MILLER & BROS. CO., MINNEAPOLIS

Table with columns: IN WHOSE NAME ASSESSED, DESCRIPTION OF PROPERTY, TRUE AND FULL VALUATIONS, ASSESSED VALUATIONS, and FINAL EQUALIZED VALUE. Includes handwritten entries for Clyde & Thelma Barber, Brown & Laura Peterson, and Charles R. Woodhouse.

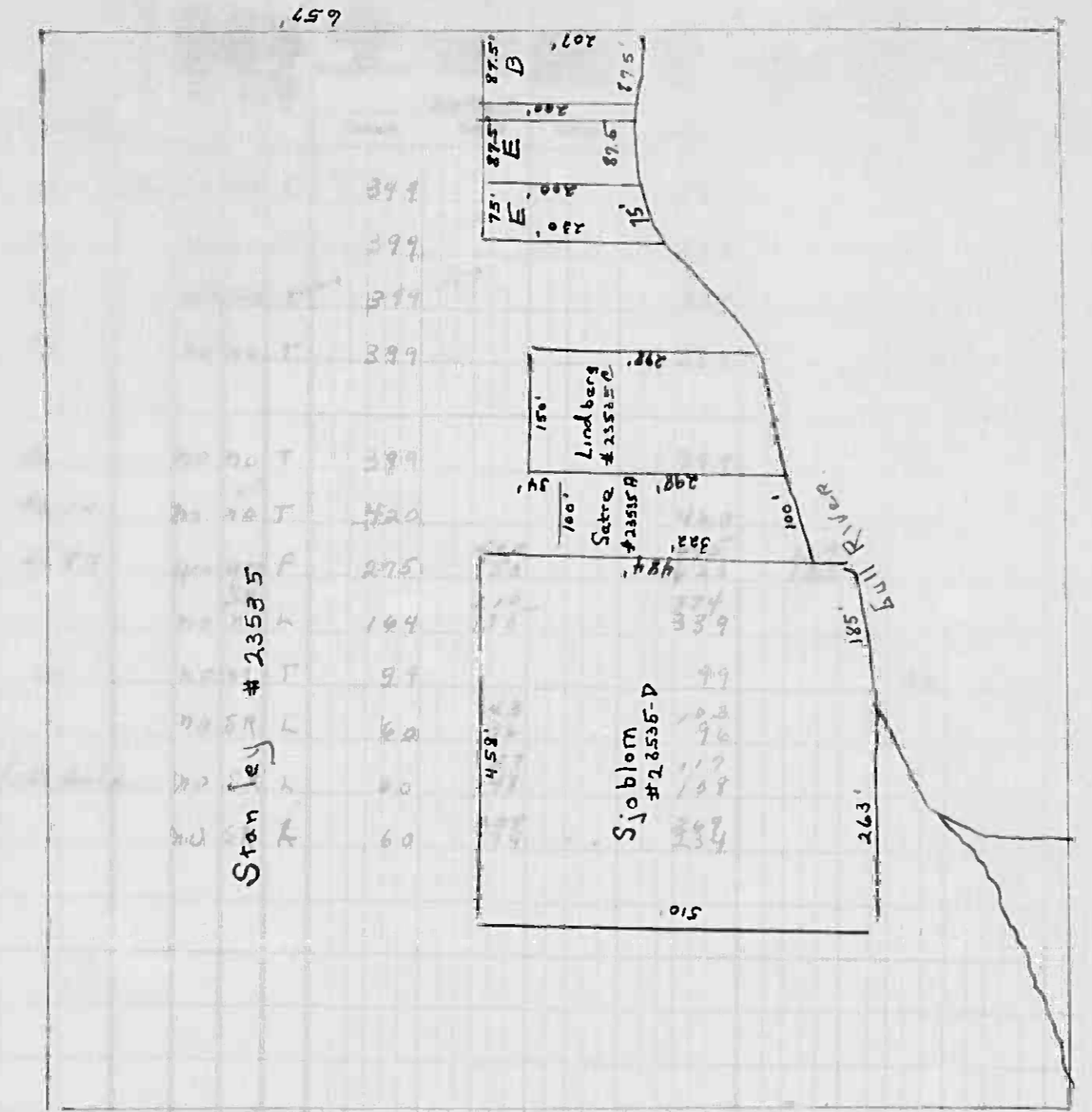
Cass County, Minnesota, for Taxes for the Year 1960.

Table with columns: VALUATIONS BY SCHOOL DISTRICTS AS EQUALIZED BY DEPARTMENT OF TAXATION, Tax including State Homestead, State Tax on Non-Homestead, SPECIAL TAXES, TOTAL TAXES, PAID, WHEN PAID, Number of Receipt, March Settlement 1961, June Settlement 1961, November Settlement 1961, Collections to First Monday in January 1962, Delinquent on First Monday in January 1962, Total Delinquent Tax and Penalty, and REMARKS. Includes handwritten entries for tax payments and dates.

Form 500 MINNAPOLIS

IN WHOSE NAME ASSESSED	SUBD	ACRES	VAL	TAXES
Minnesota Lower Light Co	N W 1/4		399	
" " "	N W 1/4		399	
" " "	S W 1/4		399	
" " "	S W 1/4		399	
Minnesota Lower Light Co	N E 1/4		399	
" " "	N W 1/4		399	
J. F. & Elmer Marlow	E W 1/4		275	
Co. A. & Berna G. Stanley	S E 1/4		104	
Minnesota Lower Light Co	10 acs of S 1/2		97	
Erwood Co or Dorothy Satre	Approx 100'		62	
Roy G. & Eva Thom	Approx 175'		80	
L. B. & Bonnie Lindberg	150' x 332'		60	
Williams Faye Sjoblom	Part of S 1/2			
James A. & Shirley Karsmough	Part of S 1/2			
James A. & Shirley J. Karsmough	Part of S 1/2			

SE 1/4 NW 1/4 19-133-29



Stanley #23555

(Continued on next page)

294.01	3133	1193	399	125	438
	737		4022	139	
			259	1222	
			281	1265	

Ver, M-Mijeral

al and tional ins	TOTAL ASSESSED VALUE	Total Assessed Value as Equalized by the Board of Review	FINAL EQUALIZED VALUE
ars	Dollars	Dollars	Dollars
	133		
	133		
	133		
	133		
	133		
	133		
	140		
	137		
	125		
	113		
	33		
	34		
	32		
	39		
	36		
	90		
	78		

10 acs

8-38 8-63

Cass County, Minnesota, for Taxes for the Year 1960.

SOLD FOR TAXES	VALUATIONS BY SCHOOL DISTRICTS AS EQUALIZED BY DEPARTMENT OF TAXATION						Tax Including State Homestead	State Tax on Non-Homestead	SPECIAL TAXES	SPECIAL TAXES	TOTAL TAXES	PAID	WHEN PAID	Number of Receipt	March Settlement 1961	June Settlement 1961	Penalty	November Settlement 1961	Penalty	Collections to First Monday in January 1962	Penalty	Delinquent on First Monday in January 1962	Total Delinquent Tax and Penalty	REMARKS
	District No.	District No.	District No.	District No.	District No.	District No.																		
	Rate	Rate	Rate	Rate	Rate	Rate																		
1						133	41.20	94			42.14	1st HALF PAID OCT 31 1961												
2						133	41.20	94			42.14	2nd HALF PAID MAY 31 1961	20706		21.07		21.07							
3						133	41.20	94			42.14	1st HALF PAID MAY 31 1961	13163		21.07		21.07							
4						133	41.20	94			42.14	2nd HALF PAID OCT 31 1961	20708		21.07		21.07							
5						133	41.20	94			42.14	1st HALF PAID MAY 31 1961	13165		21.07		21.07							
6						133	41.20	94			42.14	2nd HALF PAID OCT 31 1961	20705		21.07		21.07							
7						140	43.38	98			44.36	1st HALF PAID MAY 31 1961	13162		22.18		22.18							
8						139	39.60	88			39.60	PAID IN FULL MAR 21 1961	3505		39.60									
9						125	35.60	88			36.48	PAID IN FULL APR 21 1961	8470		36.48									
10						33	10.22	24			10.46	1st HALF PAID OCT 31 1961	20707		5.23		5.23							
11						34	9.68	24			9.92	1st HALF PAID MAY 31 1961	13164											
12						39	11.10	28			11.38	PAID IN FULL FEB 28 1961	6036	9.92										
13						90	25.64	64			26.28	PAID IN FULL MAY 11 1961	6203		11.38									
14												2nd HALF PAID OCT 10 1961	16224											
15												1st. Half Paid MAY 17 1961	10169		13.4		13.4							
16																								
17																								
18																								
19																								
20																								

4139	4139	121.62	7.96	389.18
288	888 = 1126	259.60		
427	888 = 1165	381.22		

Shady Shores Land & Village of Sylvan 135-50 Sylvan Park Sylvan Beach

Assessment Roll and Tax List of Real Property in the Town of Sylvan

* Indicate Type of Property: R-Residential, C-Commercial, I-Industrial, U-Utility, F-Farm, L-Lakeshore, T-Timber, M-Mineral

Table with columns: IN WHOSE NAME ASSESSED, SUBDIVISION, No. School District, Indicate Homestead, Agr. or Non-Agr., Full-time Type of Property, TRUE AND FULL VALUATIONS (BUILDINGS and Other Structures, MACHINERY Permanently Attached to Real Estate, TOTAL True and Full Value), ASSESSED VALUATIONS (RURAL: Homestead, Over \$4,000 and Non-Homestead, Timber Land Class, ALL OTHER: Homestead, Over \$4,000 and Non-Homestead, MACHINERY Permanently Attached to Real Estate, Seasonal and Recreational Cabins, TOTAL ASSESSED VALUE, Total Assessed Value as Equalized by the Board of Review, FINAL EQUALIZED VALUE).

Cass County, Minnesota, for Taxes for the Year 1960.

Table with columns: SOLD FOR TAXES, VALUATIONS BY SCHOOL DISTRICTS AS EQUALIZED BY DEPARTMENT OF TAXATION (District No., Rate, etc.), Tax Including State Homestead, State Tax on Non-Homestead, SPECIAL TAXES, TOTAL TAXES, PAID, WHEN PAID, Number of Receipt, March Settlement 1961, June Settlement 1961, November Settlement 1961, Collections to First Monday in January 1962, Delinquent on First Monday in January 1962, Total Delinquent Tax and Penalty, REMARKS.

Shady Shores Land & Village of Sylvan Fish Sylvan Park Sylvan Beach

Assessment and Tax List of Real Property in the

* Indicate Type of Property: R-Residential, C-Commercial, I-Industrial, U-Utility, F-Farm, L-Lakeshore, T-Timber, M-Mineral

IN WHOSE NAME ASSESSED	DESCRIPTION OF PROPERTY	No. Acres	School District	Incl. or Excl. of Homestead	Agricult. or Forest Land	Ind. or Res. Type of Property	TRUE AND FULL VALUATIONS				ASSESSED VALUATIONS							TOTAL ASSESSED VALUE	Total Assessed Value as Equalized by the Board of Review	FINAL TRAVELLED VALUE
							LAND Exclusive of Structures and Improvements	BUILDINGS and Other Structures	MACHINERY Permanently Attached to Real Estate	TOTAL True and Full Value	RURAL	ALL OTHER	Over \$1,000 and Non-Homestead	Over \$1,000 and Non-Homestead	MACHINERY Permanently Attached to Real Estate	Seasonal and Recreational Cabins	TOTAL ASSESSED VALUE			
Continuation of Sec. 33-133-29	Lot 2 of Sec. 33-133-29	1.85	116	400	70	L	50	720		770	154					154				
Alison A. Butler	55 ac. of " " " 2 " B	55	40	70	R	30	600		600	130						130				
Ralph L. Davison	65 ac. of " " " 2 " M	65	70	70	L	45	500		500	106						106				
Olaf Bjornstad	70 ac. of " " " 2 " L	70	70	SR	L	59	290		290											
Walter E. Kihlstrom	70 ac. of " " " 2 " C	70	70	SR	L	45	45		45											
Herman Holmquist	70 ac. of " " " 2 " F	70	70	SR	L	59	100		100											
Ralph E. Carmelyst Anderson	70 ac. of " " " 2 " J	70	70	SR	L	45	45		45											
" " " "	70 ac. of " " " 2 " D	70	70	SR	L	52	320		320											
Harry N. & Alice A. Ostrom	70 ac. of " " " 2 " I	70	70	SR	L	51	220		220											
" " " "	75 ac. of " " " 2 " K	75	70	SR	L	45	45		45											
Olaf Bjornstad	75 ac. of " " " 2 " E	75	70	SR	L	45	29		29											
" " " "	75 ac. of " " " 2 " H	75	70	SR	L	36	36		36											
" " " "	1 ac. of " " " 2 " G	1	70	SR	L	36	36		36											
" " " "	2.33 ac. of " " " 2	2.33	70	SR	L	36	36		36											

(Sec. 33, continued on next page) 11-83

634 1899 2279 2533 236 280 434 477 147 786

Cass County, Minnesota, for Taxes for the Year 1960.

SOLD FOR TAXES	VALUATIONS BY SCHOOL DISTRICTS AS EQUALIZED BY DEPARTMENT OF TAXATION				Tax Including State Homestead	State Tax on Non-Homestead	SPECIAL TAXES	SPECIAL TAXES	TOTAL TAXES	PAID	WHEN PAID	Number of Receipt	March Settlement 1961	June Settlement 1961	November Settlement 1961	Collections to First Monday in January 1962	Delinquent on First Monday in January 1962	Total Delinquent Tax and Penalty	REMARKS	
	District No.	Rate	District No.	Rate																
1	116	28	116	28	4772			4772	1 PAID IN FULL FEB 2 1961	1961	1359	4772								
2	116	28	116	28	3904			3904	2 PAID IN FULL MAY 12 1961	1961	10854		3904							
3	116	28	116	28	464	10		474	3 PAID IN FULL APR 28 1961	1961	8731		474							
4	116	28	116	28	2534	62		2596	4 PAID IN FULL MAY 4 1961	1961	9628		2596							
5	116	28	116	28	428	10		438	5 PAID IN FULL MAY 4 1961	1961			438							
6	116	28	116	28	1708	42		1750	6 PAID IN FULL MAY 22 1961	1961	12087		1750							
7	116	28	116	28	428	10		438	7 PAID IN FULL MAY 16 1961	1961			438							
8	116	28	116	28	3618	90		3708	8 PAID IN FULL MAY 16 1961	1961	10087		3708							
9	116	28	116	28	3048	76		3124	9 PAID IN FULL MAY 31 1961	1961	7040		3124							
10	116	28	116	28	428	10		438	10 PAID IN FULL MAY 31 1961	1961			438							
11	116	28	116	28	768	18		786	11 PAID IN FULL APR 28 1961	1961			786							
12	116	28	116	28	342	08		350	12 PAID IN FULL APR 28 1961	1961			350							
13	116	28	116	28	342	08		350	13 PAID IN FULL APR 28 1961	1961	8731		350							
14	116	28	116	28	372	08		380	14 PAID IN FULL APR 28 1961	1961			380							

* 270 = 420
 477 27 = 506 13644 357
 477 307 = 786 23156

235.08 4772 18936

Assessment Roll and Tax List of Real Property in the Town of Sylvan of Sylvan County, Minnesota

* Indicate Type of Property: R-Residential, C-Commercial, I-Industrial, U-Utility, F-Farm, L-Lakeshore, T-Timber, M-Mineral

Table with columns: IN WHOSE NAME ASSESSED, DESCRIPTION OF PROPERTY, TRUE AND FULL VALUATIONS, ASSESSED VALUATIONS, and FINAL EQUALIZED VALUE. Includes handwritten entries for Donald R. Farmer, Thos. L. & Mae L. Horn, etc.

(Sec. 4 continued on next page) 171.48

Cass County, Minnesota, for Taxes for the Year 1960.

Table with columns: SOLD FOR TAXES, VALUATIONS BY SCHOOL DISTRICTS AS EQUALIZED BY DEPARTMENT OF TAXATION, Tax including State Homestead, State Tax on Non-Homestead, SPECIAL TAXES, TOTAL TAXES, PAID, WHEN PAID, Number of Receipt, March Settlement 1961, June Settlement 1961, November Settlement 1961, Collections to First Monday in January 1962, Delinquent on First Monday in January 1962, Total Delinquent Tax and Penalty, REMARKS.

284.14
27.94

629 179.14 35.92 522 220.28 164.94 53.59

Sylvan & Shady Shores
Land & Village of Sylvan
15th Sylvan
Sylvan Beech
Carlson's Sylvan Park

Assessment Roll and Tax List of Real Property in the Town of Sylva

* Indicate Type of Property: R-Residential, C-Commercial, I-Industrial, U-Utility, F-Farm, L-Lakeshore, T-Timber, M-Mineral

Table with columns: IN WHOSE NAME ASSESSED, DESCRIPTION OF PROPERTY, TRUE AND FULL VALUATIONS, and ASSESSED VALUATIONS. Includes handwritten entries for various lots and owners like 'Part of Govt Lot 1 & 2' and 'Ralph A. & Cora A. Cole'.

(Continued on next page)

Cass County, Minnesota, for Taxes for the Year 1960.

Table with columns: VALUATIONS BY SCHOOL DISTRICTS AS EQUALIZED BY DEPARTMENT OF TAXATION, TAX INCLUDING STATE HOMESTEAD, SPECIAL TAXES, TOTAL TAXES, PAID, WHEN PAID, Number of Receipt, March Settlement 1961, June Settlement 1961, November Settlement 1961, Penalty, Collections to First Monday in January 1962, Delinquent on First Monday in January 1962, Total Delinquent Tax and Penalty, REMARKS. Includes handwritten entries for various districts and payment dates.

Assessment Roll and Tax List of Real Property in the Town of Sylvan

* Indicate Type of Property: R-Residential, C-Commercial, I-Industrial, U-Utility, F-Farm, L-Lakeshore, T-Timber, M-Mineral

Table with columns: IN WHOSE NAME ASSESSED, DESCRIPTION OF PROPERTY, TRUTH AND FULL VALUATIONS, ASSESSED VALUATIONS, and FINAL EQUALIZED VALUE. Includes entries for N.W. Paper Co., Edwin & Mae Hubins, Ralph A. & Cora Agnes Koble, etc.

Cass County, Minnesota, for Taxes for the Year 1960.

Table with columns: SOLD FOR TAXES, VALUATIONS BY SCHOOL DISTRICTS AS EQUALIZED BY DEPARTMENT OF TAXATION, SPECIAL TAXES, TOTAL TAXES, PAID, WHEN PAID, and REMARKS. Includes tax details for various districts and payment schedules.

Sylvan & Shady Shores, Land & Village of Sylvan, Sylvan Park, Sylvan Beach

Assessment Roll and Tax List of Real Property in the Town of Lyman of Dodge County, Minnesota

Table with columns: IN WHOSE NAME ASSESSED, DESCRIPTION OF PROPERTY, TRUE AND FULL VALUATIONS, ASSESSED VALUATIONS, and FINAL EQUALIZED VALUE. Includes handwritten entries for D.H. Berglund, Leslie & Rosalie, Ernest J. & Orpha Stark, and Tom Roy Fisher.

Cass County, Minnesota, for Taxes for the Year 1960.

Table with columns: SOLD FOR TAXES, VALUATIONS BY SCHOOL DISTRICTS AS EQUALIZED BY DEPARTMENT OF TAXATION, Tax including State Homestead, State Tax on Non-Homestead, SPECIAL TAXES, TOTAL TAXES, PAID, WHEN PAID, Number of Receipt, March Settlement 1961, June Settlement 1961, November Settlement 1961, Collections to First Monday in January 1962, Delinquent on First Monday in January 1962, Total Delinquent Tax and Penalty, REMARKS.

135-29 135-30

Lyman's Shady Shores Land & Village of Lyman John Lyman Carlsson's Lyman Park Lyman Beach

Assessment Roll and Tax List of Real Property in the Town of Down of Sylvan County, Minnesota

* Indicate Type of Property: R-Residential, C-Commercial, I-Industrial, U-Utility, F-Farm, L-Lakeshore, T-Timber, M-Mineral

Table with columns: NAME ASSESSED, SUBDIVISION, ACRES, TRUE AND FULL VALUATIONS, ASSESSED VALUATIONS (RURAL, ALL OTHER), TOTAL ASSESSED VALUE, and FINAL EQUALIZED VALUE.

Cass County, Minnesota, for Taxes for the Year 1960.

Table with columns: SOLD FOR TAXES, VALUATIONS BY SCHOOL DISTRICTS AS EQUALIZED BY DEPARTMENT OF TAXATION, TAX INCLUDING STATE HOMESTEAD, SPECIAL TAXES, TOTAL TAXES, PAID, WHEN PAID, and REMARKS.

133-29 133-30

Sylvan Stady Shores, Land & Village of Sylvan, Sylvan Park, Sylvan Beach

Assessment Roll and Tax List of Real Property in the Town of Sylvan of Sylvan County, Minnesota

* Indicate Type of Property: R-Residential, C-Commercial, I-Industrial, U-Utility, F-Farm, L-Lakeshore, T-Timber, M-Mineral

Table with columns: IN WHOSE NAME ASSESSED, DESCRIPTION OF PROPERTY, TRUE AND FULL VALUATIONS, ASSESSED VALUATIONS, and FINAL EQUALIZED VALUE. Includes entries for Mike & Frances Q. Ondrie, Albert E & Vernie M. Root, George M & Bernice V. Wilder, Mrs Annie L. Silvers, and State of Minnesota.

(Sec 13 continued on next page)

Cass County, Minnesota, for Taxes for the Year 1960.

Table with columns: VALUATIONS BY SCHOOL DISTRICTS AS EQUALIZED BY DEPARTMENT OF TAXATION, TAXES, PAID, WHEN PAID, and REMARKS. Includes tax rates for various districts and payment schedules.

Sylvan & Sandy Shores Land & Village of Sylvan Park Sylvan Beach

Assessment Roll and Tax List of Real Property in the South of Sylvan
* Indicate Type of Property: R-Residential, C-Commercial, I-Industrial, U-Utility, F-Farm, L-Lakeshore, T-Timber, M-Mineral

Cass County, Minnesota, for Taxes for the Year 1960.

IN WHOSE NAME ASSESSED	DESCRIPTION OF PROPERTY				School District	Ind. or Homestead	Agt. or Res.	* Ind. Type of Property	TRUE AND FULL VALUATIONS				ASSESSED VALUATIONS							FINAL EQUALIZED VALUE	
	SUBDIVISION	Sec. or Lot	Town or Blk.	Number of Acres of Land					LAND Exclusive of Structures and Improvements	BUILDINGS and Other Structures	MACHINERY Permanently Attached to Real Estate	TOTAL True and Full Value	RURAL			ALL OTHER			TOTAL ASSESSED VALUE		Total Assessed Value as Equalized by the Board of Review
													Homestead Up to \$4,000	Over \$4,000 and Non-Homestead	Timber Land Class 3e	Homestead Up to \$4,000	Over \$4,000 and Non-Homestead	MACHINERY Permanently Attached to Real Estate			
Elmer & Ella M. Vedan	N.E. 1/4	24	133	80	116	400	F	500	540	1100	220				220	220					
Minnesota Lower & Light Co.	SW 1/4			32.50	70	70	T	324		324		108			108						
	SE 1/4			40	70	70	T	399		399		133			133						
Minnesota Lower & Light Co.	SW 1/4			11	70	70	T	111		111		37			37						
Elmer & Ella M. Vedan	SW 1/4			32.65	40	40	F	85		235	17	50			67						
Minnesota Lower & Light Co.	NE 1/4			40	70	70	T	399		399		133			133						
	SW 1/4			24.75	70	70	T	246		246		82			82						
	SW 1/4			26.25	70	70	T	261		261		87			87						
				287.15				2335	450	2985	217	620			849						
								540		3075	237				867						

SOLD FOR TAXES	VALUATIONS BY SCHOOL DISTRICTS AS EQUALIZED BY DEPARTMENT OF TAXATION						Tax Including State Homestead	State Tax on Non-Homestead	SPECIAL TAXES	SPECIAL TAXES	TOTAL TAXES	PAID	WHEN PAID	Number of Receipt	March Settlement 1961	June Settlement 1961	Penalty	November Settlement 1961	Penalty	Collections to First Monday in January 1962	Penalty	Delinquent on First Monday in January 1962	Total Delinquent Tax and Penalty	REMARKS	
	District No.	District No.	District No.	District No.	District No.	District No.																			
	Rate	Rate	Rate	Rate	Rate	Rate																			
1	116	116	116	116	116	116	6266			6266	1	PAID IN FULL MAY 24 1961 8319			6266										
2																									
3							3346	76		3422	3	2nd HALF PAID OCT 31 1961 20712													
4							4120	94		4214	4	1st HALF PAID MAY 31 1961 13170			17.11		17.11								
5																									
6							1146	26		1172	6	2nd HALF PAID OCT 31 1961 20712			5.86		5.86								
7							2076	36		2112	7	1st HALF PAID MAY 31 1961 11498			15.88		15.88								
8																									
9																									
10																									
11																									
12																									
13																									
14																									
15																									
16							433	94		4214	16	1st HALF PAID MAY 31 1961 20712			21.07		21.07								
17							82	58		2598	17	1st HALF PAID OCT 31 1961 20712			12.97		12.97								
18							87	60		2756	18	2nd HALF PAID OCT 31 1961 13170			13.78		13.78								
19																									
20							4220	444		6266	20	Balance Paid MAY 24 1961 8319			175.66		91.88								
							220			680															
							4220	444		20044															
							220			647															

Sylvan & Shady Shores
Land & Village of Sylvan
Sylvan Park
Sylvan Beach

Assessment Roll and Tax List of Real Property in the Down of Sylvan

Form 50 MILLER-DAVIS CO., MINNEAPOLIS

* Indicate Type of Property: R-Residential, C-Commercial, I-Industrial, U-Utility, F-Farm, L-Lakeshore, T-Timber, M-Mineral

IN WHOSE NAME ASSESSED	DESCRIPTION OF PROPERTY				TRUE AND FULL VALUATIONS										FINAL EQUALIZED VALUE						
	SUBDIVISION	Sec. or Lot	Town or Block	Number of Acres of Land	LAND Exclusive of Structures and Improvements			BUILDINGS and Other Structures		MACHINERY Permanently Attached to Real Estate	TOTAL True and Full Value		RURAL			ALL OTHER		MACHINERY Permanently Attached to Real Estate	Seasonal and Recreational Cabins	TOTAL ASSESSED VALUE	Total Assessed Value as Equalized by the Board of Review
					Dollars	Dollars	Dollars	Dollars	Dollars	Dollars	Dollars	Dollars	Dollars	Dollars		Dollars	Dollars	Dollars	Dollars	Dollars	Dollars
Vil. of Sylvan				Acres 100ths																	
Martin & Lena Loftis	1	1		116	40	no	R	5			5	1						1		63	
"	2	2			40	no	R	25	288		313	63							63	33	
"	3	3			40	no	R	5			5	1						1			
"	4	4			40	no	R	5			5	1						1			
"	5	5			40	no	R	5			5	1						1			
Martin & Lena Loftis	6	6			40	no	R	5			5	1						1			
"	7	7			40	no	R	5			5	1						1			
"	8	8			40	no	R	5			5	1						1			
State of Minnesota	9	9																			
State of Minnesota	10	10																			
State of Minnesota	11	11																			
State of Minnesota	12	12																			
Della D. Luttrell	13	13			40	no	R	10			10	2						2			
"	14	14			40	no	R	10			10	2						2			
"	15	15			40	no	R	10			10	2						2			
"	16	16			40	no	R	10			10	2						2			
"	17	17			40	no	R	10			10	2						2			
"	18	18			40	no	R	10			10	2						2			
"	19	19			40	no	R	10			10	2						2			
"	20	20			40	no	R	10			10	2						2			
								140	240		380	16						16		46	
								288			428	86						86		86	

Cass County, Minnesota, for Taxes for the Year 1960.

SOLD FOR TAXES	VALUATIONS BY SCHOOL DISTRICTS AS EQUALIZED BY DEPARTMENT OF TAXATION						Tax Including State Homestead	State Tax on Non-Homestead	SPECIAL TAXES	SPECIAL TAXES	TOTAL TAXES	PAID	WHEN PAID	Number of Receipt	March Settlement 1961	June Settlement 1961	November Settlement 1961	Penalty	Collections to First Monday in January 1962	Penalty	Delinquent on First Monday in January 1962	Total Delinquent Tax and Penalty	REMARKS	
	District No.	District No.	District No.	District No.	District No.	District No.																		
	Rate	Rate	Rate	Rate	Rate	Rate																		
1																								
2																								
3																								
4																								
5																								
6																								
7																								
8																								
9																								
10																								
11																								
12																								
13																								
14																								
15																								
16																								
17																								
18																								
19																								
20																								

Village of Sylvan

Sylvan Stady Shores
Land & Alan's 2nd
North Sylvan
Carlyon's Sylvan Park
Sylvan Beach

Assessment Roll and Tax List of Real Property in the Town of Sylvan, Cass County, Minnesota, for Taxes for the Year 1960.

* Indicate Type of Property: R-Residential, C-Commercial, I-Industrial, U-Utility, F-Farm, L-Lakeshore, T-Timber, M-Mineral

Table with columns: IN WHOSE NAME ASSESSED, DESCRIPTION OF PROPERTY, TRUE AND FULL VALUATIONS, ASSESSED VALUATIONS, VALUATIONS BY SCHOOL DISTRICTS AS EQUALIZED BY DEPARTMENT OF TAXATION, TAXES, PAID, WHEN PAID, Number of Receipt, March Settlement 1961, June Settlement 1961, November Settlement 1961, Collections to First Monday in January 1962, Delinquent on First Monday in January 1962, Total Delinquent Tax and Penalty, REMARKS.

133-30

Village of Sylvan

North Sylvan Lake

Carlyon's Sylvan Park

Shady Shores

Land & Allen's 2nd

Land & Allen's 1st

Sylvan Beach

Assessment Roll and Tax List of Real Property in the Town of Sylvan

* Indicate Type of Property: R-Residential, C-Commercial, I-Industrial, U-Utility, F-Farm, L-Lakeshore, T-Timber, M-Minerals

Table with columns: IN WHOSE NAME ASSESSED, DESCRIPTION OF PROPERTY, TRUE AND FULL VALUATIONS, ASSESSED VALUATIONS, and FINAL EQUALIZED VALUE. Includes handwritten entries for property owners like Charles R. & Mabel M. Woodhouse.

Cass County, Minnesota, for Taxes for the Year 1960.

Table with columns: VALUATIONS BY SCHOOL DISTRICTS AS EQUALIZED BY DEPARTMENT OF TAXATION, Tax Including State Homestead, State Tax on Non-Homestead, SPECIAL TAXES, TOTAL TAXES, PAID, WHEN PAID, Number of Receipt, March Settlement, June Settlement, November Settlement, Penalty, Collections to First Monday in January, Delinquent on First Monday in January, Total Delinquent Tax and Penalty, REMARKS. Includes handwritten notes and calculations.

133-30

Village of Sylvan

North Sylvan Lakes

Carlyon's Sylvan Park

Sylvan Shady Shores

Land & Allen's 2nd Add'n to Sylvan Park

Land & Allen's 1st Add'n to Sylvan Beach

Sylvan Beach

Assessment Roll and Tax List of Real Property in the Town of Sylvan, Cass County, Minnesota, for Taxes for the Year 1960. * Indicate Type of Property: R-Residential, C-Commercial, I-Industrial, U-Utility, F-Farm, L-Lakeshore, T-Timber, M-Mineral

Table with columns: IN WHOSE NAME ASSESSED, SYLVAN BEACH, DESCRIPTION OF PROPERTY, TRU AND FULL VALUATIONS, ASSESSED VALUATIONS, and FINAL EQUALIZED VALUE. Includes handwritten entries for property owners like Geo. M. & Bernice Wilder and Arthur E. & Katherine Bondeson.

133-30, Village of Sylvan, North Sylvan Lake, Carlyon's Sylvan Park, Sylvan Beach

Cass County, Minnesota, for Taxes for the Year 1960.

Table with columns: VALUATIONS BY SCHOOL DISTRICTS AS EQUALIZED BY DEPARTMENT OF TAXATION, TAX INCLUDING STATE, SPECIAL TAXES, TOTAL TAXES, PAID, WHEN PAID, and REMARKS. Includes handwritten notes on tax payments and dates.

Shady Shores, Land & Allen's 2nd, Land & Allen's 1st, Add'n to Sylvan Beach

Assessment Roll and Tax List of Real Property in the Town of Sylvan of Sylvania

* Indicate Type of Property: R-Residential, C-Commercial, I-Industrial, U-Utility, F-Farm, L-Lakeshore, T-Timber, M-Mineral

Table with columns: (WHOSE NAME ASSESSED), SUBDIVISION, Sec. of Lot, Town or Block, Rng., Number of Acres of Land, No. School District, Ind. rate Home-stead, Agri. rate, Ind. rate, LAND, BUILDINGS and Other Structures, MACHINERY, TOTAL, RURAL, ALL OTHER, MACHINERY, Seasonal and Recreational Cabins, TOTAL ASSESSED VALUE, Total Assessed Value as Equalized by the Board of Review, FINAL EQUALIZED VALUE.

Handwritten names and addresses: Guy R. Manning, Frank J. & Albert L. McLean, Edwards Carl & Helen M. Suedberg, Poole Realty & Investments Co., Arlyon's Sylvan Park, Sylvan Beach.

Vertical text on the left margin: 133-30, Sylvan Beach, Arlyon's Sylvan Park, North Sylvan Lake, Village of Sylvan.

Cass County, Minnesota, for Taxes for the Year 1960.

Table with columns: SOLD FOR TAXES, VALUATIONS BY SCHOOL DISTRICTS AS EQUALIZED BY DEPARTMENT OF TAXATION, Tax including State Homestead, State Tax on Non-Homestead, SPECIAL TAXES, TOTAL TAXES, PAID, WHEN PAID, Number of Receipt, March Settlement 1961, June Settlement 1961, Penalty, November Settlement 1961, Penalty, Collections to First Monday in January 1962, Penalty, Delinquent on First Monday in January 1962, Total Delinquent Tax and Penalty, REMARKS.

Vertical text on the right margin: Sylvan & Shady Shores, Land & Allen's 2nd, Land & Allen's 1st, Add'n to Sylvan Beach.

Assessment Roll and Tax List of Real Property in the Town of Sylvan, Cass County, Minnesota

* Indicate Type of Property: R-Residential, C-Commercial, I-Industrial, U-Utility, F-Farm, L-Lakeshore, T-Timber, M-Mineral

Table with columns: IN WHOSE NAME ASSESSED, DESCRIPTION OF PROPERTY, TRUE AND FULL VALUATIONS, ASSESSED VALUATIONS, and FINAL EQUALIZED VALUE. Includes handwritten entries for property owners like Frank L. & Lizzie A. Allen.

Summary totals for assessed values: 1010, 1297, 2907, 124, 201, 2277, 3287, 147, 229, 626, 999.

Cass County, Minnesota, for Taxes for the Year 1960.

Table with columns: SOLD FOR TAXES, VALUATION BY SCHOOL DISTRICTS AS EQUALIZED BY DEPARTMENT OF TAXATION, TAX INCLUDING STATE HOMESTEAD, SPECIAL TAXES, TOTAL TAXES, PAID, WHEN PAID, Number of Receipts, March Settlement 1961, June Settlement 1961, November Settlement 1961, Penalty, Collections to First Monday in January 1962, Delinquent on First Monday in January 1962, Total Delinquent Tax and Penalty, REMARKS.

Summary totals for taxes: 744 = 147, 17832, 626, 279 = 855, 11556, 608, 626, 373 = 999, 293.88, 279.96, 62.88, 475.00, 62.48.

Vertical text on the left margin: 133-89, Village of Sylvan, North Sylvan Lake, Sylvan Beach, Sylvan Beach, Sylvan Beach, Sylvan Beach.

Vertical text on the right margin: Sylvan & Stady Shores, Land & Allen's 2nd Add'n to Sylvan Beach, Persons.

Assessment Roll and Tax List of Real Property in the Town of Sylvan of Sylvan

* Indicate Type of Property: R-Residential, C-Commercial, I-Industrial, U-Utility, F-Farm, L-Lakeshore, T-Timber, M-Mineral

Table with columns: IN WHOSE NAME ASSESSED, SUBDIVISION, DESCRIPTION OF PROPERTY, TRUE AND FULL VALUATIONS, ASSESSED VALUATIONS, and FINAL EQUALIZED VALUE. Includes handwritten entries for George L. & Bernice M. Lundberg, O. N. James, and Elmer C. Erickson.

Cass County, Minnesota, for Taxes for the Year 1960.

Table with columns: VALUATIONS BY SCHOOL DISTRICTS AS EQUALIZED BY DEPARTMENT OF TAXATION, TAXES, PAID, WHEN PAID, and REMARKS. Includes handwritten entries for tax amounts and payment dates.

133-80 Sylvan Shady Shores, Village of Sylvan, North Sylvan Lake, Sylvan's Sylvan Beach, Land & Allen's 1st Add'n to Sylvan Beach, Sylvan Beach, Land & Allen's 2nd Add'n to Sylvan Beach, Personal

Land & Allen's 3rd Add'n to Sylvan Beach, Personal

Assessment Roll and Tax List of Real Property in the Town of Sylvan of Sylvan

* Indicate Type of Property: R-Residential, C-Commercial, I-Industrial, U-Utility, F-Farm, L-Lakeshore, T-Timber, M-Mineral

DESCRIPTION OF PROPERTY

TRUE AND FULL VALUATIONS

ASSESSED VALUATIONS

VALUATIONS BY SCHOOL DISTRICTS AS EQUALIZED BY DEPARTMENT OF TAXATION

Main table with columns for property description, valuations, taxes, and payment status. Includes handwritten entries for names like Clyde L. Woods and Henry Drahos.

Cass County, Minnesota, for Taxes for the Year 1960.

Vertical text on the left margin: Sylvan's Shady Shores, Village of Sylvan, North Sylvan Lake, Sylvan's Sylvan's 1st, Sylvan Beach, Sylvan's Sylvan's 1st, Land & Allen's 1st, Add'n to Sylvan Beach.

Vertical text on the right margin: Land & Allen's 3rd, Add'n to Sylvan Beach, Land & Allen's 2nd, Add'n to Sylvan Beach, Personal.

