

Assessment & Tax list - 1959

Sylvan

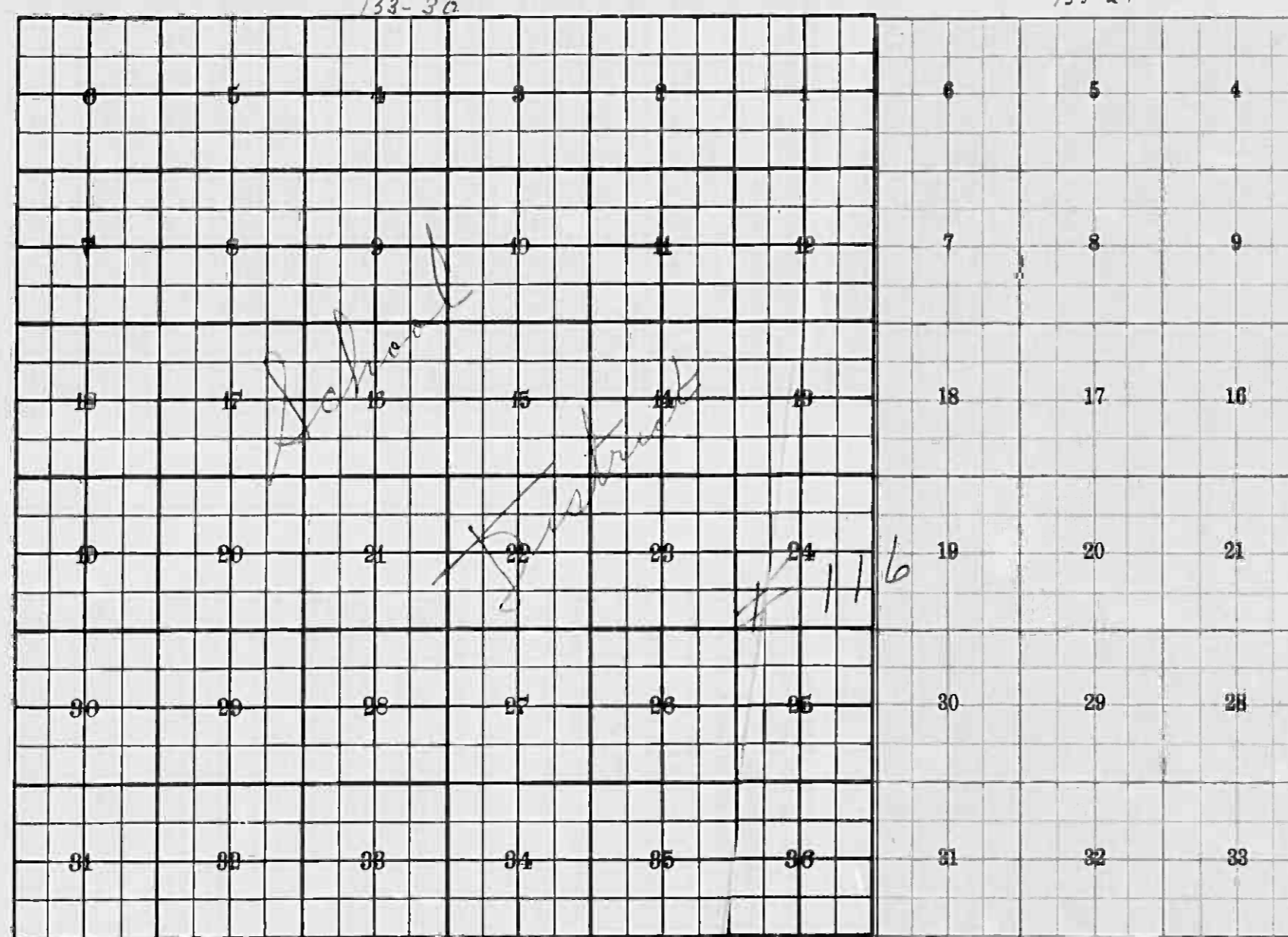
INDEX TO SECTIONS

SECTION PAGE

Table with 2 columns: SECTION and PAGE. Rows 1-36.

For Convenience of Auditor in Showing Boundaries of School Districts

Township No. Range No. Mer. P. M.



sch Dist. # 29-152
New # 116
Sept. 6, 1957

133-29

Returns Showing Grain Received in or Handled by Elevators, Warehouses and Mills in the _____ of _____ in the _____ for the Year Ending May 1, 1959.

Main table with columns: NAMES OF OWNERS, ADDRESS, Bushels of Wheat, Bushels of Soy Beans, Bushels of Flax, Total No. of Bushels of Wheat, Soy Beans and Flax, Tax of 1/4 Mill per Bushel (Dollars, Cts.), Bushels of Corn, Bushels of Barley, Bushels of Rye, Bushels of Oats, Bushels of Buckwheat, Bushels of all Other Grains, Total No. Bushels Corn, Barley, Rye, Oats, Buckwheat and all Other Grains, Tax of 1/4 Mill Per Bushel (Dollars, Cts.), Total Tax (Dollars, Cts.), REMARKS.

Note * Assessors will not fill these Column*

133-30 Page of Sylvan North Sylvan North's 1st

REAL PROPERTY BECOMING SUBJECT TO TAXATION SINCE THE LAST PREVIOUS ASSESSMENT OR OMITTED FROM ASSESSMENT ROLLS THE PREVIOUS YEARS.
 Assessment of Taxable Real Property in the _____ of _____ County of _____ Minn. for the Year 1957.

* Indicate Type of Property: R - Residential, C - Commercial, I - Industrial, U - Utility, F - Farm, L - Lakeshore, T - Timber, M - Mineral

NAME OF OWNER	School District	DESCRIPTION OF PROPERTY							TRUE AND FULL VALUATIONS				ASSESSED VALUATIONS					FINAL EQUALIZED VALUE						
		Subdivision	Sec. or Lot	Twp. or Block	Rng.	Number of Acres of Land	Indicate Homestead Yes or No	Indicate Agricultural Yes or No	Indicate Type of Property	BY WHOM VALUED	LAND Excludes Structures and Improvements	BUILDINGS and Other Structures	MACHINERY Permanently Attached to Real Estate	TOTAL True and Full Value	RURAL		ALL OTHER		MACHINERY Permanently Attached to Real Estate	TOTAL ASSESSED VALUE				
															Acres	100ths	Homestead Up to \$4,000 20%				Over \$4,000 and Non-Homestead 33 1/3%	Homestead Up to \$4,000 25%	Over \$4,000 and Non-Homestead 40%	33 1/3%
																		Total No. of Acres						
																		Total Value as Equalized by						
																		Total Value as Assessed by						

SUMMARY OF TAX COLLECTION

Original Levy - - - - - \$46,847.10
 Additions - - - - - \$16.56
 Abatements - - - - - \$45.14
 \$46,818.52

COLLECTIONS

March Settlement - - - - \$2,129.72
 June Settlement - - - - \$24,392.61
 November Settlement - - - - \$18,891.08
 January Settlement - - - - \$199.78 \$45,612.19
 \$1,265.33
 Over Collected - - - - \$.04
 Under Collected - - - - \$
 Delinquent - - - - \$1,285.37 \$1,285.33
 Total - - - - - \$

Land & Allen's 1st
 132 Real Estate
 133-30
 Dept of Sylvan
 of Sylvan
 Park
 Sylvan Beach

Assessment of

NAME OF OWNER

TABULAR SCHEDULE OF VALUATIONS, LEVIED IN THE Town of Sylvan OF County of Cass, State of Minnesota

School District No.	VALUATION BY SCHOOL DISTRICTS				RATE OF COUNTY TAXES											RATE OF TOWN TAXES											RATE OF SCHOOL TAXES			TAXES LEVIED										
	Agri-cultural Lands	Non-Agri-cultural Lands	Personal Property	Total Value of all Property except Money and Credits	Rev.	It. & B.	Welfare	Bonds and Int.	Total Rate of County Tax	Rev.	It. & B.	Drag Tax	State Loan	Total Rate of Town Tax	Local	Special	State Loan	Deficiency	Tuition	Transportation	Local 1 Mill	Special	State Loan	Def.	C.O.	State	Other	FUNDS	Rate	Amounts										
166	43,424	98,146.9	5752	150,003	8.10	35.68	15.61	95	5.579	179.04	4.67	13.34	18.01	25.50	67.67	2.5	5.73	1.86	33.2	135.29	240.44	122.940	5041.35	6270.75	3294.79	12294	28178	9147	163264	6653.02	78663	118849								
				<p>Co. Rural 2. R + B Bldg 2.5 Agri. Assn. 1.12 Drainage 1.12</p>											<p>P.P. excluding State Rate</p>											<p>RA 282.34 NA 207.34</p>			<p>County Continued: R+B Bldg. Projects 750.00 P.R. 868.47 Agri. Assn. 75.00 Transportation 168.00 19,355.98</p>											
Assessed Value				N.H. 6.22 14.32																																				
Homestead	Rural	All Other	Personal Property	Total																																				
20,258				20,258																																				
Non-Homestead																																								
121,312			8433	129745																																				
Total			8433	150,003																																				
			C-2 3283 Other 5150																																					

RATES AND TAXES

COUNTY OF CASS, STATE OF MINNESOTA

SCHOOL TAXES											TAXES LEVIED										
LOCAL 1 MILL AND SPECIAL SCHOOL TAXES BY DISTRICTS											ALL OTHER TAXES										
Total Rate of Sch'l Tax	Total Rate of all Taxes	Local 1 Mill	Special	State Loan	Def.	C.O.	State	Other	FUNDS	Rate	Amounts										
33.2	135.29	122.940	5041.35	6270.75	3294.79	12294	28178	9147	163264	6653.02	78663										
33.2	160.29	315.44	6270.75	12,050.20	375.01	859.52	279.01	4980.10	22,814.59		118,849										
											5352.00										
											2250.00										
											9292.51										
											3000.00										
											3000.00										
											700.41										
											2001.00										
											2701.41										
											6270.75										
											10,050.20										
											375.01										
											859.52										
											279.01										
											4980.10										
											22,814.59										
											46,847.10										

Total Number of Acres 17,706.39
Total Levy, \$46,847.10

I, L.L. Peterson, Auditor of said County and State aforesaid, do hereby certify that the foregoing is a true and correct Schedule, showing the valuation of all the taxable property, in the County of Cass, Minnesota, in said County, the several rates of Taxation and Totals of the several Tax Funds levied thereon for the year A. D. 1957.

Witness my hand and official seal, this 7th day of January A. D. 1956.



L.L. Peterson, County Auditor
By Helen Billow, Deputy

Total Taxes Real Estate 44,325.34
Pers Prop. 2,531.76
46,847.10

Assessment of

COLLECTIONS OF TAXES OF 1957 OF Town of Sylvan, CASS COUNTY, MINNESOTA

NAME OF OWNER	FUNDS	MARCH SETTLEMENT	JUNE SETTLEMENT	NOV. SETTLEMENT	Amount Collected from Nov. 1942... to First Monday in Jan. 1943...	REDUCTIONS	Total Reductions and Collected	BALANCE UNCOLLECTED	ADDITIONS	Total Uncollected to First Monday in January, 19...
		19 60	19 62	19 62						
	State-Non-Homestead	2791	42396	32328	300					
	State-Homestead	3698	62952	48391	536					
	County Revenue	25117	277913	214985	2358					
	County Road and Bridge	10559	116835	90381	991					
	County Welfare	43610	482531	37272	4095					
	County Bond and Interest									
	R. & C. Fed. Proj.	3520	38945	30127	330					
	Co. Nurse	1408	15577	12051	133					
	PERA	4076	45099	34887	383					
	Town Revenue	3287	36375	28139	309					
	Town Road and Bridge	9391	103905	80378	881					
	Town Drag									
	Town State Loan									
	School Local 1 Mill									
	School Special	25326	329483	257818	2133					
	School State Loan									
	Deficiency	47167	521866	403700	4428					
	Tuition									
	Transportation									
	C. O.	1760	19473	15063	165					
	PERA	1309	14488	11207	133					
	C. & L.	23371	258596	200043	2194					
	Titte #3	4033	44631	34526	379					
	R. & C. Bldg.	1408	75577	12051	133					
	Agri. Assn	353	3895	3013	33					
	Drane	788	8724	6748	74					
		212972	2439267	1889108	19978					

	School District No.	LOCAL 1 MILL	SPECIAL	STATE LOAN	Deficiency	C. O.	PERA	C. O. L.	Titte #3	TOTALS
MARCH SETTLEMENT	116 A		9871		26457	987	734	13109	2262	53420
	116 7A		15455		20710	773	575	10262	1771	49546
	Totals		25326		47167	1760	1309	23371	4033	102966
JUNE SETTLEMENT	116 A		59968		160716	5997	4462	79638	13745	324526
	116 7A		269515		361150	13476	10026	178958	30886	864011
	Totals		329483		521866	19473	14488	258596	44631	1188537
NOVEMBER SETTLEMENT	116 A		43450		116447	4345	3233	57702	9959	235136
	116 7A		214368		287253	10718	7974	142341	24567	687221
	Totals		257818		403700	15063	11207	200043	34526	922357
NOVEMBER to JANUARY	116 A		1173		3142	117	87	1557	269	6345
	116 7A		960		1286	48	36	657	110	3077
	Totals		2133		4428	165	123	2194	379	9422
ADDITIONS										
REDUCTIONS										

Land & Airon's 1st Addn to Sylvan Beach 133-30 1st of Sylvan or th Sylvan you'n's Sylvan Park Sylvan Beach 122 Real Estate

Assessment Roll and Tax List of Real Property in the Town of Sylvan, Cass County, Minnesota, for Taxes for the Year 1959.

Table with columns for IN WHOSE NAME ASSESSED, TO WHOM TRANSFERRED, DESCRIPTION OF PROPERTY, TRUE AND FULL VALUATIONS, ASSESSED VALUATIONS, VALUATIONS BY SCHOOL DISTRICTS AS EQUALIZED BY DEPARTMENT OF TAXATION, SOLD FOR TAXES, PAID, WHEN PAID, Number of Receipt, March Settlement 1960, June Settlement 1960, Penalty, November Settlement 1960, Penalty, Collections to First Monday in January 1961, Delinquent on First Monday in January 1961, Total Delinquent Tax and Penalty, REMARKS.

133-29

133-30

Land & Allen's 1st Addn to Sylvan Beach 133-30 521 Page of Sylvan 0th Sylvan Park 521 Sylvan Beach

Assessment Roll and Tax List of Real Property in the Town of Sylvan, of Lyman

Indicate Type of Property: R-Residential, C-Commercial, I-Industrial, U-Utility, F-Farm, L-Lakeshore, T-Timber, M-Mineral

Cass County, Minnesota, for Taxes for the Year 1959.

Table with columns: IN WHOSE NAME ASSESSED, TO WHOM TRANSFERRED, DESCRIPTION OF PROPERTY, TRUE AND FULL VALUATIONS, ASSESSED VALUATIONS, FINAL EQUALIZED VALUE. Includes handwritten entries for various property owners like Chas. B. & Caroline Peterson, Harold To Roy & Irene Peterson, George & Lucy Clark, Brouer & Laura Peterson, Emily & John W. Peterson, George & Lucy Clark, and Minnesota Powers & Light Co.

Table with columns: VALUATIONS BY SCHOOL DISTRICTS AS EQUALIZED BY DEPARTMENT OF TAXATION, TAX INCLUDING STATE HOMESTEAD, SPECIAL TAXES, TOTAL TAXES, PAID, WHEN PAID, Number of Receipt, March Settlement 1960, June Settlement 1960, November Settlement 1960, Collections to First Monday in January 1961, Delinquent on First Monday in January 1961, Total Delinquent Tax and Penalty, REMARKS. Includes handwritten tax payment records and dates.

133-29 132-29

1st Beach 133-30 132-30 1st Beach 133-30 132-30

Assessment Roll and Tax List of Real Property in the Town of Seylana

Cass County, Minnesota, for Taxes for the Year 1959.

Indicate Type of Property: R-Residential, C-Commercial, I-Industrial, U-Utility, F-Farm, L-Lakeshore, T-Timber, M-Mineral

Table with columns: IN WHOSE NAME ASSESSED, TO WHOM TRANSFERRED, DESCRIPTION OF PROPERTY, TRUE AND FULL VALUATIONS, ASSESSED VALUATIONS, VALUATIONS BY SCHOOL DISTRICTS, SOLD FOR TAXES, TAXES, PAID, WHEN PAID, Number of Receipt, March Settlement, June Settlement, November Settlement, Collections to First Monday in January, Delinquent on First Monday in January, Total Delinquent Tax and Penalty, REMARKS. Includes entries for State of Minnesota, Minnesota Power & Light Co., Albert A. Dykema, Mary Larsons, Howard Olaf & Bertha Erickson.

Assessment Roll and Tax List of Real Property in the Town of Sylvan

Cass County, Minnesota, for Taxes for the Year 1959.

Form 502 MILLER-DAVIS CO. MINNEAPOLIS

All that part of NE 1/4 of NE 1/4 Sec. 17-133-29 lying above 1186' contour line running across said tract, which is 1186' above the sea level elevation as established by the Mississippi River Commission, being approximately 20 acs. in the Northern Pacific Right of Way, and a certain one acre tract owned and occupied by School District #1 of Cass County and excepting the south 15 rods of the E 1/2 of NE 1/4.

Indicate Type of Property: R-Residential, C-Commercial, I-Industrial, U-Utility, F-Farm, L-Lakeshore, T-Timber, M-Mineral

Table with columns: PROPERTY (Sec. or Lot, Town or Block, No. of Acres), TRUE AND FULL VALUATIONS (LAND, BUILDINGS, MACHINERY, TOTAL), ASSESSED VALUATIONS (RURAL, ALL OTHER, MACHINERY, TOTAL ASSESSED), FINAL EQUALIZED VALUE, SOLD FOR TAXES.

Table with columns: VALUATIONS BY SCHOOL DISTRICTS AS EQUALIZED BY DEPARTMENT OF TAXATION (District No., Rate, etc.), Tax including State Homestead, SPECIAL TAXES, TOTAL TAXES, PAID, WHEN PAID, Number of Receipt, March Settlement, June Settlement, November Settlement, Delinquent on First Monday in January, Total Delinquent Tax and Penalty, REMARKS.

Handwritten entries for property owners: John H. Miller, Minnesota Power & Light Co., Home, Alvin + Emily J. Lindall, Cupina Range Power Co., Martin J. + Bertha A. Phillips, Roger Peterson, Roger R. + Laura Peterson, Minnesota Power & Light Co., Roger R. + Laura Peterson, State of Minnesota, Minnesota Power & Light Co., Albert J. Cunningham, Minnesota Power & Light Co.

(Continued on Next Page)

133-29, 133-30, Sylvan, Cass County, Minnesota

Assessment Roll and Tax List of Real Property in the Town of Sylvan, Cass County, Minnesota

Form SCD MILLER-DAVIS CO., MINNEAPOLIS

* Indicate Type of Property: R-Residential, C-Commercial, I-Industrial, U-Utility, F-Farm, L-Lakeshore, T-Timber, M-Mineral

Table with columns: IN WHOSE NAME ASSESSED, TO WHOM TRANSFERRED, SUBDIVISION, Sec. of Lot, Town or Block, Reg., Number of Acres of Land, No. School District, Indicate Homestead Tax or No., Indicate Agricultural Tax or No., Indicate Type of Property, TRUE AND FULL VALUATIONS (LAND, BUILDINGS, MACHINERY), ASSESSED VALUATIONS (RURAL, ALL OTHER, MACHINERY), TOTAL ASSESSED VALUE, Total Assessed Value as Equalized by the Board of Review, FINAL EQUALIZED VALUE.

8,35

Cass County, Minnesota, for Taxes for the Year 1959.

Table with columns: SOLD FOR TAXES, VALUATIONS BY SCHOOL DISTRICTS AS EQUALIZED BY DEPARTMENT OF TAXATION, Tax including State Homestead, State Tax on Non-Homestead, SPECIAL TAXES, TOTAL TAXES, PAID, WHEN PAID, Number of Receipts, March Settlement 1960, June Settlement 1960, November Settlement 1960, Collections to First Monday in January 1961, Delinquent on First Monday in January 1961, Total Delinquent Tax and Penalty, REMARKS.

60, 33.74, 17.42, 51.16, 38, 51.54

133-30 Village of Sylvan or in Sylvan for...

Assessment Roll and Tax List of Real Property in the Town of Sylvan,
* Indicate Type of Property: R-Residential, C-Commercial, I-Industrial, U-Utility, F-Farm, L-Lakeshore, T-Timber, M-Mineral

Cass County, Minnesota, for Taxes for the Year 1959.

Table with columns for: IN WHOSE NAME ASSESSED, TO WHOM TRANSFERRED, DESCRIPTION OF PROPERTY, TRUER AND FULL VALUATIONS, ASSESSED VALUATIONS (RURAL, ALL OTHER, MACHINERY, TOTAL ASSESSED VALUE), SOLD FOR TAXES, VALUATIONS BY SCHOOL DISTRICTS AS EQUALIZED BY DEPARTMENT OF TAXATION, Tax including State Homestead, State Tax on Non-Homestead, SPECIAL TAXES, TOTAL TAXES, PAID, WHEN PAID, March Settlement 1960, June Settlement 1960, November Settlement 1960, Collections to First Monday in January 1961, Delinquent on First Monday in January 1961, Total Delinquent Tax and Penalty, REMARKS.

133

133-30

Large of Sylvan or th Sylvan for

Sylvan Beach

Sylvan Beach

Assessment Roll and Tax List of Real Property in the Town of Sylvan

Indicate Type of Property: R-Residential, C-Commercial, I-Industrial, U-Utility, F-Farm, L-Lakeshore, T-Timber, M-Mineral

Cass County, Minnesota, for Taxes for the Year 1959

Table with columns: Description of Property, True and Full Valuations, Assessed Valuations, Valuations by School Districts, Sold for Taxes, Special Taxes, Total Taxes, Paid, When Paid, Number of Receipts, March Settlement 1960, June Settlement 1960, November Settlement 1960, Collections to First Monday in January 1961, Delinquent on First Monday in January 1961, Total Delinquent Tax and Penalty, Remarks.

See 2 pages in 1960 book

Minnesota Power & Light Co.
Roy & Eva Shore
Minnesota Power & Light Co.
J. J. & Ellen J. Marlow
C. A. & Verna E. Stanley
Minnesota Power & Light Co.
Arnold C. & Dorothy Kalkowski
Navilleux Land Co.
George W. & Betty E. Franklin

133-29
133-30
Sylvan Beach

Assessment Roll and Tax List of Real Property in the Town of Sylvan

Cass County, Minnesota, for Taxes for the Year 1959.

Indicate Type of Property: R-Residential, C-Commercial, I-Industrial, U-Utility, F-Farm, L-Lakeshore, T-Timber, M-Mineral

Table with columns for property description, valuations, taxes, and payment status. Includes entries for Navillus Land Co., Albert S. Ward Corporation, Leland G. & Judy Foy, and Minnesota Power & Light Co.

132-28, 133-29, 133-30, 134-31, 134-32, 134-33, 134-34, 134-35, 134-36, 134-37, 134-38, 134-39, 134-40, 134-41, 134-42, 134-43, 134-44, 134-45, 134-46, 134-47, 134-48, 134-49, 134-50

132-28, 133-29, 133-30, 134-31, 134-32, 134-33, 134-34, 134-35, 134-36, 134-37, 134-38, 134-39, 134-40, 134-41, 134-42, 134-43, 134-44, 134-45, 134-46, 134-47, 134-48, 134-49, 134-50

Assessment Roll and Tax List of Real Property in the Town of Sylvan

Cass County, Minnesota, for Taxes for the Year 1959.

Form SCD 1958-59 REVISED, MINNESOTA. *Indicate Type of Property: R-Residential, C-Commercial, I-Industrial, U-Utility, F-Farm, L-Lakeshore, T-Timber, M-Mineral

Table with columns: IN/WHOSE NAME ASSESSED, TO WHOM TRANSFERRED, DESCRIPTION OF PROPERTY, TRUE AND FULL VALUATIONS, ASSESSED VALUATIONS, VALUATIONS BY SCHOOL DISTRICTS AS EQUALIZED BY DEPARTMENT OF TAXATION, SOLD FOR TAXES, SPECIAL TAXES, TOTAL TAXES, PAID, WHEN PAID, Number of Receipt, March Settlement 1960, June Settlement 1960, November Settlement 1960, Penalty, Collections to First Monday in January 1961, Delinquent on First Monday in January 1961, Total Delinquent Tax and Penalty, REMARKS.

(Continued on Next Page)

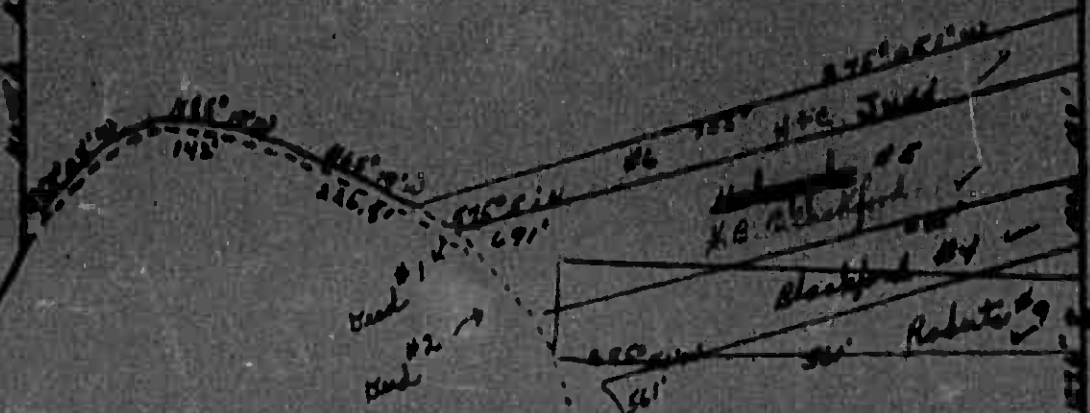
133-30 Sylvan Beach

Ch of [unclear] [unclear]

DEED 102

#7 Prime

100
00
1000



#6 H.P.C. Trust
 #8 Blackford
 #9 Robt. [unclear]

D-681

D-682

Dad #1
 Dad #2

Viking
 #8
 #10
 #11
 Harrington
 #22092A

776'

556'

156'

792'

50'

#3 Lundquist

Scale 1" = 300'
 #2 #1
 28-188-29

#4 Johnson

1188'

442'

1000
 1000

Assessment Roll and Tax List of Real Property in the

Town of Sylvan

County of Cass, Minnesota, for Taxes for the Year 1959.

Cass County, Minnesota, for Taxes for the Year 1959.

Form 501 MILLER-DAVIS CO., MINNEAPOLIS
Indicate Type of Property: R-Residential, C-Commercial, I-Industrial, U-Utility, F-Farm, L-Lakeshore, T-Timber, M-Mineral

Table with columns: IN WHOSE NAME ASSESSED, TO WHOM TRANSFERRED, DESCRIPTION OF PROPERTY, TRUE AND FULL VALUATIONS, ASSESSED VALUATIONS, FINAL EQUALIZED VALUE.

Table with columns: VALUATIONS BY SCHOOL DISTRICTS AS EQUALIZED BY DEPARTMENT OF TAXATION, SOLD FOR TAXES, SPECIAL TAXES, TOTAL TAXES, PAID, WHEN PAID, Number of Receipt, March Settlement 1960, June Settlement 1960, Penalty, November Settlement 1960, Penalty, Collections to First Monday in January 1961, Penalty, Delinquent on First Monday in January 1961, Total Delinquent Tax and Penalty, REMARKS.

1st of... 133-30... Sylvan Beech... 1951... 1957... 1958... 1959...

Assessment Roll and Tax List of Real Property in the Town of Sylvan of Lybans

Form 5 CD MILLER-DAVIS CO., MINNEAPOLIS. Indicate Type of Property: R-Residential, C-Commercial, I-Industrial, U-Utility, F-Farm, L-Lakeshore, T-Timber, M-Mineral

Table with columns: IN WHOSE NAME ASSESSED, TO WHOM TRANSFERRED, SUBDIVISION, TRUE AND FULL VALUATIONS, ASSESSED VALUATIONS, FINAL EQUALIZED VALUE. Includes entries for Michael A. + Olga Chamberlain, Joseph Kauppel, Edward + Susan Heikkonen, etc.

Continued on next page

Cass County, Minnesota, for Taxes for the Year 1959.

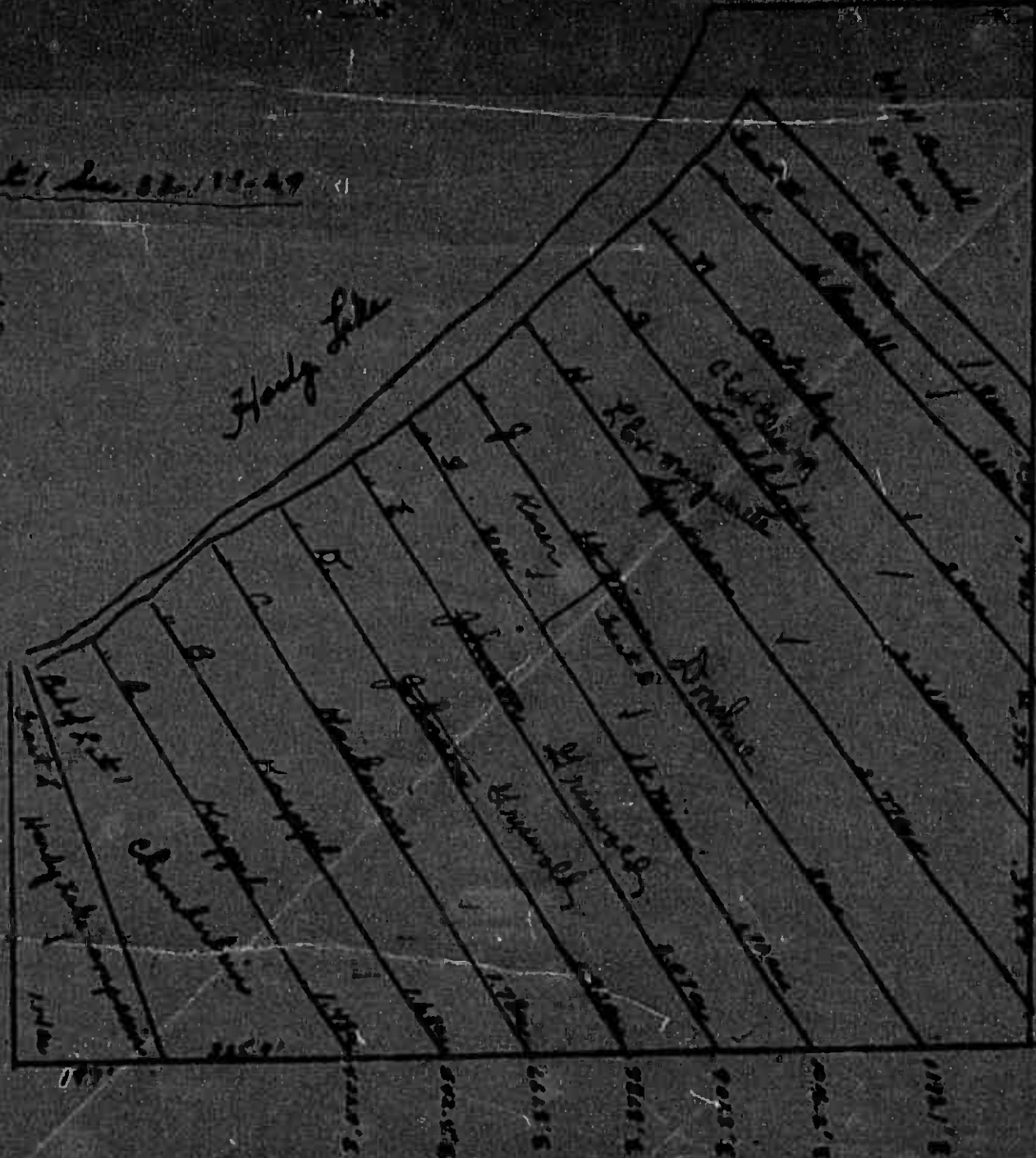
Table with columns: SOLO FOR TAXES, VALUATIONS BY SCHOOL DISTRICTS AS EQUALIZED BY DEPARTMENT OF TAXATION, SPECIAL TAXES, TOTAL TAXES, PAID, WHEN PAID, Number of Receipt, March Settlement 1960, June Settlement 1960, Penalty, November Settlement 1960, Penalty, Collections to First Monday in January 1961, Delinquent on First Monday in January 1961, Total Delinquent Tax and Penalty, REMARKS. Includes entries for 1-20 with tax amounts and payment dates.

Vertical text on the right edge of the page: Land, 133-29, 133-30, Millage of Sylvan, etc.

Lot 1 Dec. 22, 1949

checked
3-24-60

Howdy Lake



100'

Form 300 (REV. 1-15-58) MINN. STAT. § 354.01
Farm, L-Lakeshore, T-Timber, M-Mineral

IN WHOSE NAME ASSESSED	TO WHOM TRANSFERRED	SUBDIVISION	Sec. or Lot	Town or Block	Reg.	Number of Acres of Land	No. School District	Indicate Live-wood Tax or No	Indicate Agricultural Tax or No	Indicate Type of Property	TRUE AND FULL VALUATIONS											FINAL EQUALIZED VALUE	
											LAND Exclusion of Structures and Improvements	BUILDINGS and Other Structures	MACHINERY Permanently Attached to Real Estate	TOTAL True and Full Value	RURAL					ALL OTHER			
						Acres						Dollars	Dollars	Dollars	Dollars	Dollars	Dollars	Dollars	Dollars	Dollars	Dollars	Dollars	Dollars
Allison H. & Esther L. Dixon		.85 ac. of Lot 2 - Tract A	33	133	29	.85	116	70	70	L													
Ralph L. & Dorothy M. Dixon		.55 ac. of Lot 2 - Tract B				.55		70		R													
Olaf Bjornstad		.65 ac. of Lot 2 - Tract M				.65		70		L													
Walter B. & Wilhelmine Horn		.70 ac. of Lot 2 - Tract L				.70		70															
"		.70 ac. of Lot 2 - Tract C				.70		70															
Herman Holmquist		.70 ac. of Lot 2 - Tract J				.70		70															
Ralph E. & Carmelyta Anderson		.70 ac. of Lot 2 - Tract I				.70		70															
"		.70 ac. of Lot 2 - Tract D				.70		70															
Harry T. & Alice A. Peterson		.70 ac. of Lot 2 - Tract I				.70		70															
"		.75 ac. of Lot 2 - Tract K				.75		70															
Olaf Bjornstad		.75 ac. of Lot 2 - Tract E				.75		70															
"		.75 ac. of Lot 2 - Tract H				.75		70															
"		1 ac. of Lot 2 - Tract G				1		70															
"		2.33 ac. of Lot 2				2.33		70															

Continued on Next Page

SOLD FOR TAXES	VALUATIONS BY SCHOOL DISTRICTS AS EQUALIZED BY DEPARTMENT OF TAXATION						Tax including State Homestead	State Tax on Non-Homestead	SPECIAL TAXES	TOTAL TAXES	PAID	WHEN PAID	Number of Receipt	March Settlement 1960	June Settlement 1960	Penalty	November Settlement 1960	Penalty	Collections to First Monday in January 1961	Penalty	Delinquent on First Monday in January 1961	Total Delinquent Tax and Penalty	REMARKS
	District No.	District No.	District No.	District No.	District No.	District No.																	
	Rate	Rate	Rate	Rate	Rate	Rate																	
1																							
2																							
3																							
4																							
5																							
6																							
7																							
8																							
9																							
10																							
11																							
12																							
13																							
14																							
15																							
16																							
17																							
18																							
19																							
20																							

H 196
346
573

170.98 218

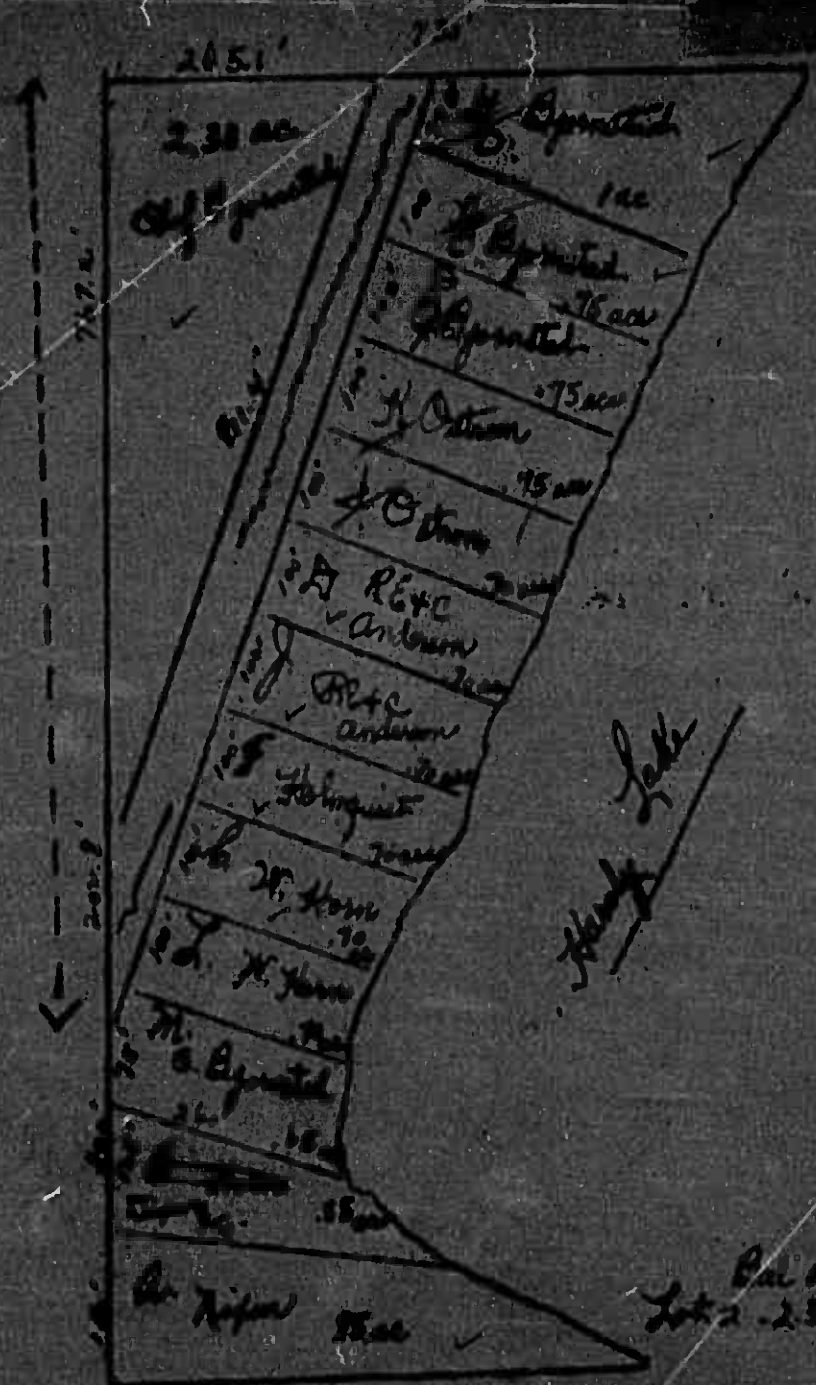
173.16

173.16

133-30
Village of Sylvan North Sylvan
Sylvan Beach

SCALE 1" = 200'
 Govt Lot 2 Sec 31-113-29

This map drawn from
 Plat of Land
 2-9-53



- A. Nison
- B. ~~St. Horn~~ Nison
- C. St. Horn
- D. R+E Anderson
- E. Bjornstad
- F. Holmgren
- G. Bjornstad
- H. Bjornstad
- I. R+E Anderson
- J. R+E Anderson
- K. L. St. Horn
- L. L. St. Horn
- M. Bjornstad

Part of
 Lot 2 - 233 ac. Bjornstad

1123 ac
 3.2 mi road

check
 1-1-53

Assessment Roll and Tax List of Real Property in the Town of Sylvan

Indicate Type of Property: R-Residential, C-Commercial, I-Industrial, U-Utility, F-Farm, L-Lakeshore, T-Timber, M-Mineral

Cass County, Minnesota, for Taxes for the Year 1959.

Table with columns: IN WHOSE NAME ASSESSED, TO WHOM TRANSFERRED, DESCRIPTION OF PROPERTY, TRUE AND FULL VALUATIONS, ASSESSED VALUATIONS, VALUATIONS BY SCHOOL DISTRICTS AS EQUALIZED BY DEPARTMENT OF TAXATION, SOLD FOR TAXES, SPECIAL TAXES, TOTAL TAXES, PAID, WHEN PAID, Number of Receipt, March Settlement 1960, June Settlement 1960, Penalty, November Settlement 1960, Penalty, Collections to First Monday in January 1961, Penalty, Delinquent on First Monday in January 1961, Total Delinquent Tax and Penalty, REMARKS.

Continued on Next Page

13-30 Village of Sylvan for Sylvan No. 13-30

Assessment Roll and Tax List of Real Property in the Town of Sylvan

Cass County, Minnesota, for Taxes for the Year 1959.

Form 302 Indicate Type of Property: R-Residential, C-Commercial, I-Industrial, U-Utility, F-Farm, L-Lakeshore, T-Timber, M-Mineral

Table with columns: IN WHOSE NAME ASSESSED, TO WHOM TRANSFERRED, DESCRIPTION OF PROPERTY, TRUE AND FULL VALUATIONS, ASSESSED VALUATIONS, VALUATIONS BY SCHOOL DISTRICTS AS EQUALIZED BY DEPARTMENT OF TAXATION, SOLD FOR TAXES, PAID, WHEN PAID, Number of Receipt, March Settlement 1960, June Settlement 1960, November Settlement 1960, Collections to First Monday in January 1961, Delinquent on First Monday in January 1961, Total Delinquent Tax and Penalty, REMARKS.

133-29

133-30

Alvin O. Johnson's, Adolph Hagen's, John Hagen's, Hjalmar A. Sisson's, Clarence B. Sisson's

Cont. Set 1

5550

67

1946

42

1988

2nd HALF PAID OCT 31 1960 17527 1st HALF PAID MAY 31 1960 10444

994

994

67

1946

42

1988

994

994

9871

Land Address Book Sylvan Beach

Assessment Roll and Tax List of Real Property in the Town of Sylvan, Cass County, Minnesota, for Taxes for the Year 1959.

Indicate Type of Property: R-Residential, C-Commercial, I-Industrial, U-Utility, F-Farm, L-Lakeshore, T-Timber, M-Mineral

Form 303 MILLER-DAVIS CO., MINNEAPOLIS

Table with columns for IN WHOSE NAME ASSESSED, TO WHOM TRANSFERRED, DESCRIPTION OF PROPERTY, TRUE AND FULL VALUATIONS, ASSESSED VALUATIONS, VALUATIONS BY SCHOOL DISTRICTS, TAXES, PAID, WHEN PAID, and REMARKS. Includes handwritten entries for Ronald R. Farmer, Thos. L. & Mac L. Horn, etc.

133-29 133-30

Vertical text on the right edge of the page, including 'Village of Sylvan' and other administrative markings.

Continued on next page

171.49

Summary row with totals: 392, 27.37, 655, 86.12, 110.96, 197.08, 410, 201.18

140.68

26.32

Assessment Roll and Tax List of Real Property in the Town of Sylvan

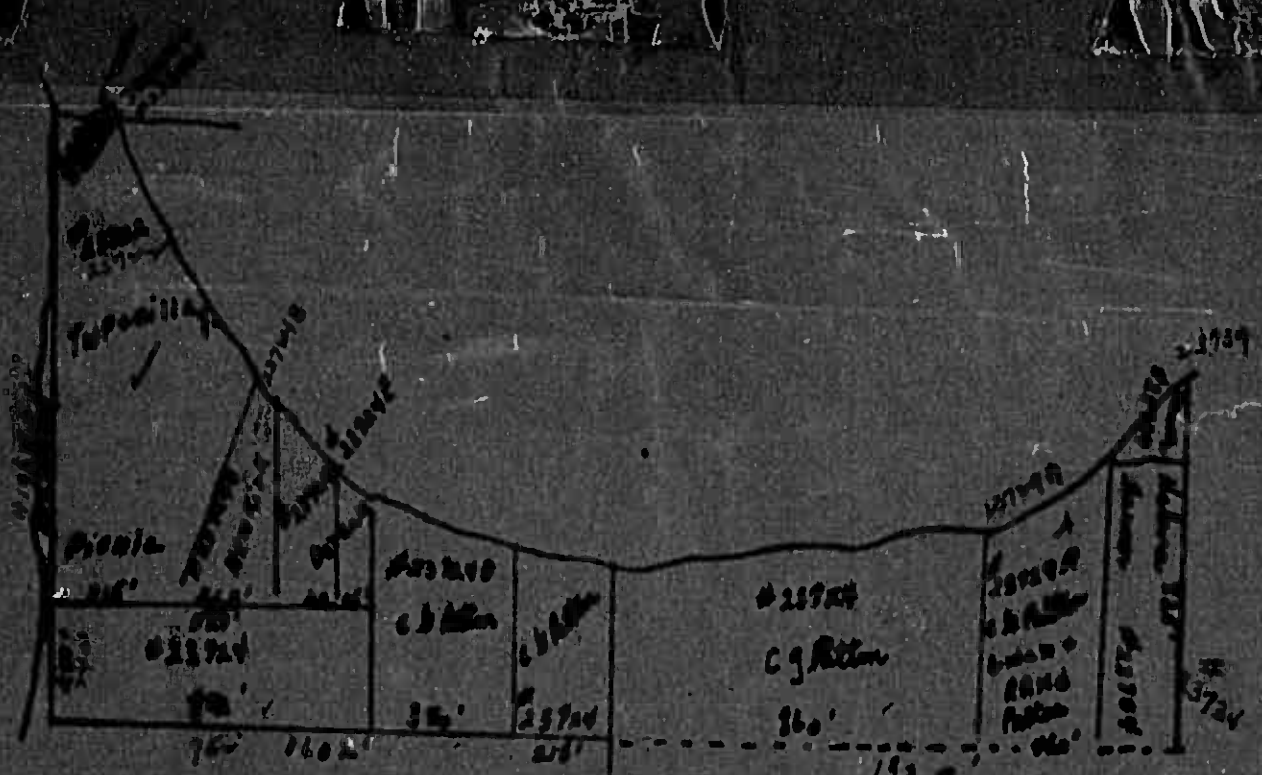
Cass County, Minnesota, for Taxes for the Year 1959.

FORM 502 MILLER-DAVIS CO., MINNEAPOLIS. Indicate Type of Property: R-Residential, C-Commercial, I-Industrial, U-Utility, F-Farm, L-Lakeshore, T-Timber, M-Mineral

Table with columns: IN WHOSE NAME ASSESSED, TO WHOM TRANSFERRED, SUBDIVISION, TRUE AND FULL VALUATIONS, ASSESSED VALUATIONS, VALUATIONS BY SCHOOL DISTRICTS AS EQUALIZED BY DEPARTMENT OF TAXATION, SOLD FOR TAXES, SPECIAL TAXES, TOTAL TAXES, PAID, WHEN PAID, Number of Receipt, March Settlement 1960, June Settlement 1960, Penalty, November Settlement 1960, Penalty, Collections to First Monday in January 1961, Penalty, Delinquent on First Monday in January 1961, Total Delinquent Tax and Penalty, REMARKS.

133-29, 133-30

Land, Add'l, Beach, SYL, Village of Sylvan with Sylvan for, Sylvan Beach, ch



5-133-30

628' of Lot 2
 20' 860' of Lot 1 N. of extend
 at 60' 44' lines

23705

R. A. Cole
 40 ac

1320'

Assessment Roll and Tax List of Real Property in the Town of Sylvan

Indicate Type of Property: R-Residential, C-Commercial, I-Industrial, U-Utility, F-Farm, L-Lakeshore, T-Timber, M-Mineral

Table with columns: IN WHOSE NAME ASSESSED, TO WHOM TRANSFERRED, DESCRIPTION OF PROPERTY, TRUE AND FULL VALUATIONS, ASSESSED VALUATIONS, FINAL EQUALIZED VALUE.

Handwritten names: Harriet B. Beranf, Richard E. Beranf, Paul O. Berglund, N.W. Paper Co., Ralph A. & Cora A. Cole

44235

Cass County, Minnesota, for Taxes for the Year 1959.

Table with columns: SOLD FOR TAXES, VALUATIONS BY SCHOOL DISTRICTS AS EQUALIZED BY DEPARTMENT OF TAXATION, SPECIAL TAXES, TOTAL TAXES, PAID, WHEN PAID, Number of Receipt, March Settlement, June Settlement, Penalty, November Settlement, Collections to First Monday in January 1961, Delinquent on First Monday in January 1961, Total Delinquent Tax and Penalty, REMARKS.

Handwritten numbers: 9496, 9879, 14967, 9278, 9277

Vertical text on the right edge: 1st, 2nd, 3rd, 4th, 5th, 6th, 7th, 8th, 9th, 10th, 11th, 12th, 13th, 14th, 15th, 16th, 17th, 18th, 19th, 20th, Village of Sylvan in the County of Cass, State of Minnesota.

Assessment Roll and Tax List of Real Property in the Town of Sylvan

Cass County, Minnesota, for Taxes for the Year 1959.

Form SCD 1958-59. Indicate Type of Property: R-Residential, C-Commercial, I-Industrial, U-Utility, F-Farm, L-Lakeshore, T-Timber, M-Mineral

Table with columns: IN WHOSE NAME ASSESSED, TO WHOM TRANSFERRED, DESCRIPTION OF PROPERTY, TRUE AND FULL VALUATIONS, ASSESSED VALUATIONS, and FINAL EQUALIZED VALUE.

Table with columns: VALUATIONS BY SCHOOL DISTRICTS AS EQUALIZED BY DEPARTMENT OF TAXATION, TAXES, PAID, WHEN PAID, and REMARKS.

133-29

133-30

133-29

133-30

Village of Sylvan for the Sylvan Co.

Sylvan Beach

Assessment Roll and Tax List of Real Property in the Town of Sylva

Cass County, Minnesota, for Taxes for the Year 1959.

Form 500 UNIFORM STATE PROPERTY TAX MAP... Indicate Type of Property: R-Residential, C-Commercial, I-Industrial, U-Utility, F-Farm, L-Lakeshore, T-Timber, M-Mineral

Table with columns: IN WHOSE NAME ASSESSED, TO WHOM TRANSFERRED, DESCRIPTION OF PROPERTY, TRUE AND FULL VALUATIONS, ASSESSED VALUATIONS, VALUATIONS BY SCHOOL DISTRICTS AS EQUALIZED BY DEPARTMENT OF TAXATION, SOLD FOR TAXES, SPECIAL TAXES, TOTAL TAXES, PAID, WHEN PAID, Number of Receipt, March Settlement 1960, June Settlement 1960, Penalty, November Settlement 1960, Penalty, Collections to First Monday in January 1961, Penalty, Delinquent on First Monday in January 1961, Total Delinquent Tax and Penalty, REMARKS.

133-29 133-30

Land & Addn. Beach, Sylva, Village of Sylva on th Sylva, Sylva Beach, ch

Assessment Roll and Tax List of Real Property in the Town of Sylvan, Cass County, Minnesota

Cass County, Minnesota, for Taxes for the Year 1959.

Main table containing columns for 'IN WHOSE NAME ASSESSED', 'TO WHOM TRANSFERRED', 'DESCRIPTION OF PROPERTY', 'TRUE AND FULL VALUATIONS', 'ASSESSED VALUATIONS', 'VALUATIONS BY SCHOOL DISTRICTS AS EQUALIZED BY DEPARTMENT OF TAXATION', and 'PAID WHEN PAID'. Includes handwritten entries for names like N.W. Paper Co., Elmer & Mae Gudens, Ralph A. + Cora Agnes Cole, and Edwin B. Hubins.

133-29, 133-30

Land & Addn, Resol, SYL, Village of Sylvan or th Sylvan, 30, Sylvan Beach, ch

Assessment Roll and Tax List of Real Property in the Town of Sylvan

FOR THE YEAR 1959

* Indicate Type of Property: R-Residential, C-Commercial, I-Industrial, U-Utility, F-Farm, L-Lakeshore, T-Timber, M-Mineral

Cass County, Minnesota, for Taxes for the Year 1959.

132-29 133-30

Main data table with columns: WHOSE NAME ASSESSED, TO WHOM TRANSFERRED, DESCRIPTION OF PROPERTY, TRUE AND FULL VALUATIONS, ASSESSED VALUATIONS, VALUATIONS BY SCHOOL DISTRICTS AS EQUALIZED BY DEPARTMENT OF TAXATION, TAXES, PAID, WHEN PAID, etc.

Continued on next page

Vertical text on the far right edge of the page, including 'Village of Sylvan' and 'Sylvan Beach'.

Assessment Roll and Tax List of Real Property in the Town of Sylvan, Cass County, Minnesota, for Taxes for the Year 1959.

FORM 302 MILLER-DAVIS CO., MINNEAPOLIS

* Indicate Type of Property: R-Residential, C-Commercial, I-Industrial, U-Utility, F-Farm, L-Lakeshore, T-Timber, M-Mineral

Table with columns: IN WHOSE NAME ASSESSED, TO WHOM TRANSFERRED, DESCRIPTION OF PROPERTY, TRUE AND FULL VALUATIONS, ASSESSED VALUATIONS, and FINAL EQUALIZED VALUE.

Cass County, Minnesota, for Taxes for the Year 1959.

Table with columns: SOLD FOR TAXES, VALUATIONS BY SCHOOL DISTRICTS AS EQUALIZED BY DEPARTMENT OF TAXATION, SPECIAL TAXES, TOTAL TAXES, PAID, WHEN PAID, Number of Receipts, March Settlement 1960, June Settlement 1960, November Settlement 1960, Collections to First Monday in January 1961, Delinquent on First Monday in January 1961, Total Delinquent Tax and Penalty, and REMARKS.

133-29 132-29 133-30

Land & Addn. to Beach, Sylvan Beach, Village of Sylvan on Sylvan Beach, 133-29-1-2nd

Assessment Roll and Tax List of Real Property in the Town of Sylvan, Cass County, Minnesota, for Taxes for the Year 1959.

Cass County, Minnesota, for Taxes for the Year 1959.

Table with columns: IN WHOSE NAME ASSESSED, TO WHOM TRANSFERRED, DESCRIPTION OF PROPERTY, TRUE AND FULL VALUATIONS, ASSESSED VALUATIONS, and FINAL EQUALIZED VALUE.

Table with columns: VALUATIONS BY SCHOOL DISTRICTS AS EQUALIZED BY DEPARTMENT OF TAXATION, TAX INCLUDING STATE HOMESTEAD, SPECIAL TAXES, TOTAL TAXES, PAID, WHEN PAID, Number of Receipt, March Settlement 1960, June Settlement 1960, November Settlement 1960, Collections to First Monday in January 1961, Delinquent on First Monday in January 1961, Total Delinquent Tax and Penalty, REMARKS.

132-29, 133-29, 133-30

1st, 2nd, 3rd, 4th, 5th, 6th, 7th, 8th, 9th, 10th, 11th, 12th, 13th, 14th, 15th, 16th, 17th, 18th, 19th, 20th, Village of SYLVAN north SYLVAN yo., Sylvan Beach

Assessment Roll and Tax List of Real Property in the Town of Sylvan, Cass County, Minnesota, for Taxes for the Year 1959.

Cass County, Minnesota, for Taxes for the Year 1959.

Table with columns for IN WHOSE NAME ASSESSED, TO WHOM TRANSFERRED, DESCRIPTION OF PROPERTY, TRUE AND FULL VALUATIONS, ASSESSED VALUATIONS, VALUATIONS BY SCHOOL DISTRICTS AS EQUALIZED BY DEPARTMENT OF TAXATION, SOLD FOR TAXES, SPECIAL TAXES, TOTAL TAXES, PAID, WHEN PAID, and REMARKS. Includes handwritten entries for John W. Lee, Marie A. Thompson, and John Wellington Lee.

Vertical text on the right edge of the page: Land & Beach, Sylvan, Village of Sylvan north Sylvan, Sylvan Beach, Minn.

Assessment Roll and Tax List of Real Property in the Town of Sylvan, Cass County, Minnesota, for Taxes for the Year 1959.

Cass County, Minnesota, for Taxes for the Year 1959.

Form SCD HILLER-DAVIS CO., MINNEAPOLIS

* Indicate Type of Property: R-Residential, C-Commercial, I-Industrial, U-Utility, F-Farm, L-Lakeshore, T-Timber, M-Mineral

Main table with columns: IN WHOSE NAME ASSESSED, TO WHOM TRANSFERRED, DESCRIPTION OF PROPERTY, TRUE AND FULL VALUATIONS, ASSESSED VALUATIONS, VALUATIONS BY SCHOOL DISTRICTS AS EQUALIZED BY DEPARTMENT OF TAXATION, TAXES, PAID, WHEN PAID, etc.

Lena Cole

Wesley E. Peterson

Lena Cole

Minnesota Power & Light Co

Geo. A. Albrecht, Mayor of Minneapolis

Leon W. & Margaret Terwilliger

SE 1/4 of NW 1/4 less 1 ac. to Hauseman & less 1 ac. to Albrecht, less E. 60' & less Starting 60' W. of S.E. Cor. of SE Cor. of SE 1/4 of NW 1/4, thence N. to a point 30 rds. S. of Hy, thence SW parallel with Hy. 16 rds. S. to S. line of SE 1/4 of NW 1/4 thence to Beg.

Continued on Next Page

185 02

Land, Add'n, Plat, Beach, S-1, Village of Sylvan, North Sylvan, Y.

Assessment Roll and Tax List of Real Property in the Town of Sylvan

Cass County, Minnesota, for Taxes for the Year 1959.

Form SCD WILCOX-DAVIS CO., MINNEAPOLIS. Indicate Type of Property: R-Residential, C-Commercial, I-Industrial, U-Utility, F-Farm, L-Lakeshore, T-Timber, M-Mineral

Main table with columns: IN WHOSE NAME ASSESSED, TO WHOM TRANSFERRED, DESCRIPTION OF PROPERTY, TRUE AND FULL VALUATIONS, ASSESSED VALUATIONS, VALUATIONS BY SCHOOL DISTRICTS AS EQUALIZED BY DEPARTMENT OF TAXATION, SOLD FOR TAXES, PAID, WHEN PAID, etc.

Frederick H. Provoct Jr et al
Otto & Eleanor Citrowski

Theodore Prescott

Lewis L. & Clara L. Johnson

State of Minnesota

Part of separate page for Dec 23 in 1960 book

Land Address 1st St Village of Sylvan orth Sylvan Co. 2nd St & Atlanta 2nd St Sylvan Beach 1st

Assessment Roll and Tax List of Real Property in the Town of Sylvan

Indicate Type of Property: R-Residential, C-Commercial, I-Industrial, U-Utility, F-Farm, L-...

Table with columns: IN WHOSE NAME ASSESSED, TO WHOM TRANSFERRED, DESCRIPTION OF PROPERTY, TRUE AND FULL VALUATIONS, ASSESSED VALUE. Rows 1-20 with subdivisions like NE 1/4 of NW 1/4.

PAGES

51

THRU

62

BLANK

Cass County, Minnesota, for Taxes for the Year 1959.

Table with columns: SPECIAL TAXES, TOTAL TAXES, PAID, WHEN PAID, Number of Receipt, March Settlement 1960, June Settlement 1960, November Settlement 1960, Collections to First Monday in January 1961, Delinquent on First Monday in January 1961, Total Delinquent Tax and Penalty, REMARKS. Rows 1-20.

Land & Allen's 1st Add'n to Sylvan Beach Sylvan Village of Sylvan North Sylvan York & Allen's 2nd Sylvan Beach 2nd

Assessment Roll and Tax List of Real Property in the *Town* of *Sylvan*

* Indicate Type of Property: R-Residential, C-Commercial, I-Industrial, U-Utility, F-Farm, L-Lakeshore, T-Timber, M-Mineral

Form 30 MICHIGAN-DAVIS CO., MINNEAPOLIS

IN WHOSE NAME ASSESSED	TO WHOM TRANSFERRED	DESCRIPTION OF PROPERTY	TRUE AND FULL VALUATIONS													FINAL EQUALIZED VALUE										
			Subdivision	Sec. or Lot	Town or Block	Rng.	Number of Acres of Land Acres 100ths	No. School District	Indicate Homestead Yes or No	Indicate Agricultural Tax Yes or No	Indicate Type of Property	LAND EXCLUSIVE OF STRUCTURES AND IMPROVEMENTS			BUILDINGS AND OTHER STRUCTURES			MACHINERY Permanently Attached to Real Estate	TOTAL True and Full Value	ASSESSED VALUATIONS					Total Assessed Value as Equalized by the Board of Review	
												Dollars	Dollars	Dollars	Dollars		Dollars			Dollars	RURAL		MACHINERY Permanently Attached to Real Estate	TOTAL ASSESSED VALUE		
																					Homestead Up to \$4,000 20%	Over \$4,000 and Non-Homestead 33 1/3%				Timber Land Class 3c 20%

Cass County, Minnesota, for Taxes for the Year 1959.

SOLD FOR TAXES	VALUATIONS BY SCHOOL DISTRICTS AS EQUALIZED BY DEPARTMENT OF TAXATION					Tax including State Homestead	State Tax on Non-Homestead	SPECIAL TAXES	TOTAL TAXES	PAID	WHEN PAID	Number of Receipt	March Settlement 1960	June Settlement 1960	Penalty	November Settlement 1960	Penalty	Collections to First Monday in January 1961	Penalty	Delinquent on First Monday in January 1961	Total Delinquent Tax and Penalty	REMARKS
	District No.	District No.	District No.	District No.	District No.																	
	Rate	Rate	Rate	Rate	Rate																	
	Dollars	Dollars	Dollars	Dollars	Dollars																	
1						32			32	HALF PAID	OCT 5 1960											
2						1672			1672	HALF PAID	OCT 5 1960											
3						32			32	HALF PAID	OCT 5 1960											
4						32			32	HALF PAID	OCT 5 1960											
5						32			32	HALF PAID	OCT 5 1960											
6						32			32	HALF PAID	OCT 5 1960											
7						32			32	HALF PAID	OCT 5 1960											
8						32			32	HALF PAID	OCT 5 1960											
9																						
10																						
11																						
12																						
13																						
14																						
15																						
16																						
17																						
18																						
19																						
20																						
											2408											46 overcollected

Village of Sylvan

Martin + Lena Loftis

State of Minnesota

State of Minnesota

Jessie Britton State of Minnesota

State of Minnesota

Charlene Della B. Luttrell

133-29
133-30
Village of Sylvan
Village of Sylvan
Shady Shore
& Allen's 2nd
North Sylvan
Sylvan Beach

Assessment Roll and Tax List of Real Property in the Town of Sylvan

Indicate Type of Property: R-Residential, C-Commercial, I-Industrial, U-Utility, F-Farm, L-Lakeshore, T-Timber, M-Mineral

FORM 30 MILLER-DAVIS CO. MINNEAPOLIS

Village of Sylvan

IN WHOSE NAME ASSESSED	TO WHOM TRANSFERRED	DESCRIPTION OF PROPERTY		TRUE AND FULL VALUATIONS												FINAL EQUALIZED VALUE	
				RURAL				ALL OTHER				TOTAL ASSESSED VALUE	Total Assessed Value as Required by the Board of Review	Dollars			
				Homestead Up to \$1,000 20%	Over \$4,000 and Non-Homestead 33 1/8%	Timber Land Class 1e 20%	Homestead Over \$4,000 and Non-Homestead 40%	MACHINERY Permanently Attached to Real Estate 33 1/8%	LAND Exclusive of Structures and Improvements	BUILDINGS and Other Structures	MACHINERY Permanently Attached to Real Estate				TOTAL True and Full Value		
Dollars	Dollars	Dollars	Dollars	Dollars	Dollars	Dollars	Dollars	Dollars	Dollars	Dollars							
Charles M. Della B. Luttrell		Subdivision: Village of Sylvan	Sec. of Lot: 21, Rag: 1	No. of Acres of Land: 1.16	No. School District: 770	No. Home-used Tax: R											
			Sec. of Lot: 22														

Cass County, Minnesota, for Taxes for the Year 1959.

SOLD FOR TAXES	VALUATIONS BY SCHOOL DISTRICTS AS EQUALIZED BY DEPARTMENT OF TAXATION						Tax including State Homestead	State Tax on Non-Homestead	SPECIAL TAXES	TOTAL TAXES	PAID	WHEN PAID	Number of Receipt	March Settlement 1960	June Settlement 1960	Penalty	November Settlement 1960	Penalty	Collections to First Monday in January 1961	Penalty	Delinquent on First Monday in January 1961	Total Delinquent Tax and Penalty	REMARKS	
	District No.	District No.	District No.	District No.	District No.	District No.																		
	Rate	Rate	Rate	Rate	Rate	Rate																		
	Mills	Mills	Mills	Mills	Mills	Mills																		
	\$	\$	\$	\$	\$	\$																		
1									62	1														
2									62	2														
124									124															

Land Add'n, Sylvan Beach, Sylvan, Shady Shore, Allen's 2nd, North Sylvan, Park, S1 Sylvan Beach

Assessment Roll and Tax List of Real Property in the Town of Sylvan
 *Indicate Type of Property: R-Residential, C-Commercial, I-Industrial, U-Utility, F-Farm, L-Lakeshore, T-Timber, M-Mineral

Cass County, Minnesota, for Taxes for the Year 1959.

Village of Sylvan

IN WHOSE NAME ASSESSED	TO WHOM TRANSFERRED	DESCRIPTION OF PROPERTY				No. School District	Indicate Homestead To No.	Indicate Agricultural Tax or No.	Indicate Type of Property	TRUE AND FULL VALUATIONS			ASSESSED VALUATIONS						FINAL QUALIFIED VALUE	SOLD FOR TAXES	VALUATIONS BY SCHOOL DISTRICTS AS EQUALIZED BY DEPARTMENT OF TAXATION						Tax Including State Homestead	State Tax on Non-Homestead	SPECIAL TAXES	TOTAL TAXES	PAID	WHEN PAID	Number of Receipt	March Settlement 1960	June Settlement 1960	Penalty	November Settlement 1960	Penalty	Collections to First Monday in January 1961	Penalty	Delinquent on First Monday in January 1961	Total Delinquent Tax and Penalty	REMARKS						
		Subdivision	Sec. of Lot	Town or Block	Reg.					Number of Acres of Land	LAND Exclusive of Structures and Improvements	BUILDINGS and Other Structures	MACHINERY Permanently Attached to Real Estate	TOTAL True and Full Value	RURAL	ALL OTHER					TOTAL ASSESSED VALUE	Total Assessed Value as Equalized by the Board of Review	District No.	District Rate	District No.	District Rate																		District No.	District Rate	District No.	District Rate	\$	cts.
George M. & Bernice V. Wilder	"	Village of Sylvan	1	2		116		R																																									
"	"	"	2	"		"	"	"																																									
"	"	"	3	"		"	"	"																																									
Jack F. & Ellen J. Marlow	"	"	4	"		"	"	"																																									
"	"	"	5	"		"	"	"																																									
Town of Sylvan	"	"	6	"		"	"	"																																									
"	"	"	7	"		"	"	"																																									
"	"	"	8	"		"	"	"																																									
"	"	"	9	"		"	"	"																																									
"	"	"	10	"		"	"	"																																									
"	"	"	11	"		"	"	"																																									
"	"	"	12	"		"	"	"																																									
"	"	"	13	"		"	"	"																																									
"	"	"	14	"		"	"	"																																									
Charles and Della S. Luthell	"	"	15	"		400		R																																									
"	"	"	16	"		"	"	"																																									
"	"	"	17	"		"	"	"																																									
George M. & Bernice V. Wilder	"	"	18	"		"	"	"																																									
"	"	"	19	"		"	"	"																																									
"	"	"	20	"		"	"	"																																									

132-29
 133-30
 1st
 Sylvan Beach
 Sylvan, Shady Shore
 & Allen's 2nd
 North Sylvan
 you
 and
 Sylvan Beach
 rd

Assessment Roll and Tax List of Real Property in the

Town of Sylvan

Cass County, Minnesota, for Taxes for the Year 1959.

Form 50 MILLER-DAVIS CO., MINNEAPOLIS

* Indicate Type of Property: R-Residential, C-Commercial, I-Industrial, U-Utility, F-Farm, L-Lakeshore, T-Timber, M-Mineral

133-29
133-30
NORTH SYLVAN village of Sylvan

IN WHOSE NAME ASSESSED TO WHOM TRANSFERRED

DESCRIPTION OF PROPERTY
SUBDIVISION
North Sylvan *Lake*
Part of 1/2 of NW 1/4 Sec. 13-133-30

Sec. of Lot
Town of Block
Rd.
Number of Acres of Land
Acres 100ths

No. School District

Indicate Homestead Yes or No

Indicate Agricultural Yes or No

Indicate Type of Property

TRUE AND FULL VALUATIONS

ASSESSED VALUATIONS

LAND Exclusive of Structures and Improvements
BUILDINGS and Other Structures
MACHINERY Permanently Attached to Real Estate
TOTAL True and Full Value
Dollars Dollars Dollars Dollars

RURAL
Homestead Up to \$1,000 20%
Over \$4,000 and Non-Homestead 33 1/3%
Timber Land Class Je 20%

ALL OTHER
Homestead Up to \$4,000 25%
Over \$4,000 and Non-Homestead 40%
MACHINERY Permanently Attached to Real Estate 33 1/3%

TOTAL ASSESSED VALUE
Total Assessed Value as Equalized by the Board of Review
Dollars Dollars

FINAL QUALIFIED VALUE

SOLD FOR TAXES

VALUATIONS BY SCHOOL DISTRICTS AS EQUALIZED BY DEPARTMENT OF TAXATION

District No.	District No.	District No.	District No.	District No.	District No.	Tax including State Homestead	State Tax on Non-Homestead	SPECIAL TAXES	TOTAL TAXES	PAID	WHEN PAID	Number of Receipt	March Settlement 1960	June Settlement 1960	Penalty	November Settlement 1960	Penalty	Collections to First Monday in January 1961	Penalty	Delinquent on First Monday in January 1961	Total Delinquent Tax and Penalty	REMARKS
Rate - Mills	Rate - Mills	Rate - Mills	Rate - Mills	Rate - Mills	Rate - Mills	Mills	Mills	\$ cts.	\$ cts.	\$ cts.	\$ cts.		\$ cts.	\$ cts.	\$ cts.	\$ cts.	\$ cts.	\$ cts.	\$ cts.	\$ cts.	\$ cts.	

State of Minnesota
State of Minnesota

1
2
3
4
5
6
7
8
9
10
11
12
13
14
15
16
17
18
19
20

// /

12

116

116

Land
Add
Sylvan Beach
Sylvan's 1st
Sylvan's 2nd
Sylvan's Shady Shores in to Sylvan
d & Allen's 2nd
Sylvan Beach
Sylvan Beach
Sylvan Beach

Assessment Roll and Tax List of Real Property in the Town of Sylvan

Indicate Type of Property: R-Residential, C-Commercial, I-Industrial, U-Utility, F-Farm, L-Lakeshore, T-Timber, M-Mineral

Cass County, Minnesota, for Taxes for the Year 1959.

Table with columns: IN WHOSE NAME ASSESSED, TO WHOM TRANSFERRED, DESCRIPTION OF PROPERTY, TRUE AND FULL VALUATIONS, ASSESSED VALUATIONS, VALUATIONS BY SCHOOL DISTRICTS AS EQUALIZED BY DEPARTMENT OF TAXATION, TAXES, PAID, WHEN PAID, etc.

Carlyon's Sylvan Park Village of Sylvan

Land Add'l Sylvan Beach, Sylvan's 1st Shady Shore Ln to Sylvan Beach, Sylvan's 2nd Add'l Sylvan Beach

Assessment Roll and Tax List of Real Property in the Town of Sylvan of Cass County, Minnesota

Cass County, Minnesota, for Taxes for the Year 1959.

Table with columns: IN WHOSE NAME ASSESSED, TO WHOM TRANSFERRED, DESCRIPTION OF PROPERTY, TRUE AND FULL VALUATIONS, ASSESSED VALUATIONS, VALUATIONS BY SCHOOL DISTRICTS AS EQUALIZED BY DEPARTMENT OF TAXATION, TAXES, PAID, WHEN PAID, etc.

133-29 133-30 Carlyon's Sylvan Park H. SILVAN Village of Sylvan

133-29 133-30 Carlyon's Sylvan Park H. SILVAN Village of Sylvan

133-29 133-30 Carlyon's Sylvan Park H. SILVAN Village of Sylvan

Assessment Roll and Tax List of Real Property in the

Town of Sylvan
* Indicate Type of Property: R-Residential, C-Commercial, I-Industrial, U-Utility, F-Farm, L-Lakeshore, T-Timber, M-Mineral

Form 504-1-1-31 LAR-DAVIS-CO. MINNEAPOLIS

Table with columns: IN WHOSE NAME ASSESSED, TO WHOM TRANSFERRED, DESCRIPTION OF PROPERTY, TRUE AND FULL VALUATIONS, ASSESSED VALUATIONS (RURAL, ALL OTHER), TOTAL ASSESSED VALUE, Total Assessed Value as Equalized by the Board of Review, FINAL EQUALIZED VALUE.

Cass County, Minnesota, for Taxes for the Year 1959.

Table with columns: SOLD FOR TAXES, VALUATIONS BY SCHOOL DISTRICTS AS EQUALIZED BY DEPARTMENT OF TAXATION, Tax Including State Homestead, State Tax on Non-Homestead, SPECIAL TAXES, TOTAL TAXES, PAID, WHEN PAID, Number of Receipt, March Settlement 1960, June Settlement 1960, Penalty, November Settlement 1960, Penalty, Collections to First Monday in January 1961, Penalty, Delinquent on First Monday in January 1961, Total Delinquent Tax and Penalty, REMARKS.

133-29
133-30

Carlyon's Sylvan Park Village of Sylvan

Land & Add'l. Sylvan Beach
Shady Shores in to Sylvan Beach
& Allen's 2nd
Sylvan Beach

Assessment Roll and Tax List of Real Property in the Town of Sylvan

Form 30-MILLER-DAVIS CO., MINNEAPOLIS

Indicate Type of Property: R-Residential, C-Commercial, I-Industrial, U-Utility, F-Farm, L-Lakeshore, T-Timber, M-Mineral

Main table with columns for Assessed Valuations, True and Full Valuations, and Final Equalized Value. Includes names like Geo. M. + Bernice Wilders, Carl L. + Hazel Bonderson, Howard + Gladys M. Light, Floyd Grant, Arthur E. + Katherine Bonderson.

Cass County, Minnesota, for Taxes for the Year 1959.

Table for Tax Payments and Settlements. Columns include Sold for Taxes, Valuations by School Districts, Special Taxes, Total Taxes, PAID, WHEN PAID, and Settlement details.

133-29 133-30 Carlyon, Sylvan Park H SYLVAN Village of Sylvan Sylvan Beach

Land & 1st Add'n Sylvan Beach 2nd Shady Shores in to Sylvan Beach 3rd & Allen's 2nd Add'n to Sylvan Beach & Allen's 3rd Add'n to Sylvan Beach

Assessment Roll and Tax List of Real Property in the Town of Sylvan

Cass County, Minnesota, for Taxes for the Year 1959.

Form 500-MILLER-DAVIS CO., MINNEAPOLIS

Indicate Type of Property: R-Residential, C-Commercial, I-Industrial, U-Utility, F-Farm, L-Lakeshore, T-Timber, M-Mineral

133-29 133-30 Carlyon' Sylvan Park in Sylvan Village of Sylvan Sylvan Beach

Main table with columns: IN WHOSE NAME ASSESSED, TO WHOM TRANSFERRED, SUBDIVISION, DESCRIPTION OF PROPERTY, TRUE AND FULL VALUATIONS, ASSESSED VALUATIONS, VALUATIONS BY SCHOOL DISTRICTS AS EQUALIZED BY DEPARTMENT OF TAXATION, TAXES, PAID, WHEN PAID, etc.

Land & Allen's 1st Add'n to Sylvan Beach, Sylvan's Shady Shores, Land & Allen's 2nd Add'n to Sylvan Beach, Land & Allen's 3rd Add'n to Sylvan Beach

Assessment Roll and Tax List of Real Property in the Town of Sylvan

Cass County, Minnesota, for Taxes for the Year 1959.

Form 3C MILLER-DAVIS CO., MINNEAPOLIS * Indicate Type of Property: R-Residential, C-Commercial, I-Industrial, U-Utility, F-Farm, L-Lakeshore, T-Timber, M-Mineral

Table with columns: IN WHOSE NAME ASSESSED, TO WHOM TRANSFERRED, SUBDIVISION, TRUE AND FULL VALUATIONS, ASSESSED VALUATIONS, VALUATIONS BY SCHOOL DISTRICTS AS EQUALIZED BY DEPARTMENT OF TAXATION, TAXES, PAID, WHEN PAID, Number of Receipt, March Settlement 1960, June Settlement 1960, Penalty, November Settlement 1960, Penalty, Collections to First Monday in January 1961, Penalty, Delinquent on First Monday in January 1961, Total Delinquent Tax and Penalty, REMARKS. Includes handwritten entries for Nancy Waldorf, Elmer E. Erickson, Delia Bailey, etc.

133-29 133-30 Land & Allen's 1st Add'n to Sylvan Beach Sylvan Shady Shores Sylvan Shady Shores Carlyon's Sylvan Park M SYLVAN Sylvan Beach

Land & Allen's 2nd Add'n to Sylvan Beach Land & Allen's 3rd Add'n to Sylvan Beach

Assessment Roll and Tax List of Real Property in the Town of Sylvan

Indicate Type of Property: R-Residential, C-Commercial, I-Industrial, U-Utility, F-Farm, L-Lakeshore, T-Timber, M-Mineral

Form 50 - MILLER-DAVIS CO., MINNEAPOLIS

Table with columns: IN WHOSE NAME ASSESSED, TO WHOM TRANSFERRED, SUBDIVISION, DESCRIPTION OF PROPERTY, TRUE AND FULL VALUATIONS, ASSESSED VALUATIONS, FINAL QUALIFIED VALUE.

Handwritten names: Clyde L. Woods, Henry Draho, James B. + Bertha C. Nelson, Bernard P. Aechterling, Warren F. Anderson, John A. McWhorter, Mrs. H. V. Battley, Arthur P. Anderson, Emil + Patricia Frank, E. J. + E. E. Ninko, H. J. Courson + Mary E. Courson.

Vertical text on the left edge: 133-29, 133-30, Sylvan Shady Shores, Sylvan Park, Sylvan Beach, Lead & Allen's 1st Add'n to Sylvan Beach, Lead & Allen's 2nd Add'n to Sylvan Beach, Lead & Allen's 3rd Add'n to Sylvan Beach.

Cass County, Minnesota, for Taxes for the Year 1959.

Table with columns: SOLD FOR TAXES, VALUATIONS BY SCHOOL DISTRICTS AS EQUALIZED BY DEPARTMENT OF TAXATION, TAX INCLUDING STATE HOMESTEAD, SPECIAL TAXES, TOTAL TAXES, PAID, WHEN PAID, Number of Receipt, March Settlement 1960, June Settlement 1960, November Settlement 1960, Collections to First Monday in January 1961, Delinquent on First Monday in January 1961, Total Delinquent Tax and Penalty, REMARKS.

Handwritten tax data and remarks for 1959, including amounts like 2670, 3154, 2366, 4020, 1578, 546, 2670, 2412, 3942, 536, 1078, 546, 2670, 2412, 2114, 4278, 386, 32230, 26189, 6041.

Vertical text on the right edge: Lead & Allen's 2nd Add'n to Sylvan Beach, Lead & Allen's 3rd Add'n to Sylvan Beach.

Assessment Roll and Tax List of Real Property in the Town of Sylvan

Indicate Type of Property: R-Residential, C-Commercial, I-Industrial, U-Utility, F-Farm, L-Lakeshore, T-Timber, M-Mineral

Cass County, Minnesota, for Taxes for the Year 1959

Table with columns: IN WHOSE NAME ASSESSED, TO WHOM TRANSFERRED, DESCRIPTION OF PROPERTY, TRUE AND FULL VALUATIONS, ASSESSED VALUATIONS, VALUATIONS BY SCHOOL DISTRICTS AS EQUALIZED BY DEPARTMENT OF TAXATION, SOLD FOR TAXES, PAID, WHEN PAID, SPECIAL TAXES, TOTAL TAXES, PAID, WHEN PAID, March Settlement 1960, June Settlement 1960, November Settlement 1960, Collections to First Monday in January 1961, Delinquent on First Monday in January 1961, Total Delinquent Tax and Penalty, REMARKS.

133-29 133-30 Carlyon' Sylvan Park H SYLVAN Land & Allen's 1st Add'n to Sylvan Beach Sylvan Shady Shores Sylvan Sylvan Beach

Land & Allen's 3rd Add'n to Sylvan Beach

