

Assessment & Tax List - 1962

Sylvan

INDEX TO SECTIONS

SECTION PAGE

Sec. 1	
" 2	
" 3	
" 4	
" 5	
" 6	
" 7	
" 8	
" 9	
" 10	
" 11	
" 12	
" 13	
" 14	
" 15	
" 16	
" 17	
" 18	
" 19	
" 20	
" 21	
" 22	
" 23	
" 24	
" 25	
" 26	
" 27	
" 28	
" 29	
" 30	
" 31	
" 32	
" 33	
" 34	
" 35	
" 36	

For Convenience of Auditor in Showing Boundaries of School Districts

Township No. ¹³³⁻²⁹ 132-29 Range No. Mer. P. M.

1	2	3	4	5	6	7	8	9	10
11	12	13	14	15	16	17	18	19	20
21	22	23	24	25	26	27	28	29	30
31	32	33	34	35	36	37	38	39	40

*2nd Dist
129-150
#116
1/16/57*

132-29
5 4

Returns Showing Grain Received in or Handled by Elevators, Warehouses and Mills in the _____ of _____ in the _____ County of _____ for the Year Ending May 1, 1958.

NAMES OF OWNERS	ADDRESS	Bushels of Wheat	Bushels of Soy Beans	Bushels of Flax	Total No. of Bushels of Wheat, Soy Beans and Flax	★ Tax of 1/2 Mill per Bushel		Bushels of Corn	Bushels of Barley	Bushels of Rye	Bushels of Oats	Bushels of Buckwheat	Bushels of Other Grains	Total No. Bushels Corn, Rye, Oats, Buckwheat and all Other Grains	★ Tax of 1/4 Mill Per Bushel		★ Total Tax		REMARKS
						Dollars	Cts.								Dollars	Cts.	Dollars	Cts.	

Note ★ Assessors will not fill these Columns

133-30 190 of 577

SUMMARY OF TAX COLLECTION

Original Levy	- - - - -	\$ 41,270.46
Additions	- - - - -	\$ <u>23.02</u>
		\$ 41,293.48
Abatements	- - - - -	\$ <u>26.08</u>
		\$ 41,267.40

COLLECTIONS

March Settlement	- - - - -	\$ 1,871.20
June Settlement	- - - - -	\$ 2,385.34
November Settlement	- - - - -	\$ 16,884.14
January Settlement	- - - - -	\$ <u>63.42</u> \$ 40,204.10
		\$
Over Collected	- - - - -	\$ <u>22.21</u>
Under Collected	- - - - -	\$
Delinquent	- - - - -	\$ <u>1085.51</u> \$ 1063.30
Total	- - - - -	\$ 41,267.40

133-30 use of system North System

TABULAR SCHEDULE OF VALUATIONS,

LEVIED IN THE Town OF Sylvan

School District No.	VALUATION BY SCHOOL DISTRICTS				RATE OF STATE TAXES		RATE OF COUNTY TAXES										RATE OF TOWN TAXES										RATE OF									
	Agricultural Lands	Non-Agricultural Lands	Personal Property	Total Value of all Property except Money and Credits	Total Rate of State Tax	Rev.	H. & B.	Welfare	Bonds and Int.	PERA	Total Rate of County Tax	Rev.	R. & B.	Drag Tax	State Loan	Local	Special	State Loan	Deficiency	Tuition	Transportation	C.O.	PERA	Local	Special	State Loan	Deficiency	Tuition	Transportation	C.O.	PERA					
116	40960	97775	5694	146927	11.90	24.54	15.51.68		5.3.45	109.17	1.36	17.1.			19.36	1.25.	59.	1.45	2.5	.65			34.14	103.74	258.17	4665	116635	275259	6765	11663	3032	159277	577296			
			772 2498													1.50.	59.	1.45	2.5	.65			34.14	148.74	283.17	10027	501365	5791611	14540	25088	6518	342332	1491461			
				N. H. 6.52 12.42		Co. Nurse 2. R & B Bldg. 2. Agric. Assn. .5																														
Assessed Value	Rural	All Other	Personal Property	Total																																
Homestead	19450			19450																																
Non-Homestead	119285		8192	127477																																
Total	138735		8192	146927																																

RATES AND TAXES

COUNTY OF CASS, STATE OF MINNESOTA

SCHOOL TAXES	LOCAL 1 MILL AND SPECIAL SCHOOL TAXES BY DISTRICTS										ALL OTHER TAXES		
	Total Rate of Sch'l Tax	Total Rate of all Taxes	Local 1 Mill	Special	State Loan	Def. Transp. C.O.	PERA	B. & Int.	Total School Taxes	FUNDS	Rate	Amounts	
34.14	103.74	258.17	4665	116635	275259	6765	11663	3032	159277	577296	State - Non-Homestead	83152	
34.14	148.74	283.17	10027	501365	5791611	14540	25088	6518	342332	1491461	State - Homestead	86686	
												County Revenue	434022
												County Road and Bridge	220390
												County Welfare	759319
												PERA	50690
												Co. Nurse	29385
												R. & B. Fed. Prop.	73463
												Town Revenue	19982
												Town Road and Bridge	249776
												Town Drag	14693
												Town State Loan	284451
												School Local 1 Mill	14692
												School Special	618000
												School State Loan	
												Deficiency	866870
												Tuition	
												Transportation	21305
												C.O.	36731
												PERA	9550
												B. & Int.	501609
													2068757
													4127046
												Total Taxes Real Estate	39039.46
												Pers. Prop.	2231.00
												Total	41270.46

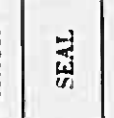
County: R & B Bldg. 29385
Agric. Assn. 7346
16,040.00

Total Levy, \$41,270.46
Total Number of Acres 17,778.04
State of Minnesota, }
COUNTY OF CASS }
Auditor of said County and State aforesaid, do hereby certify that the foregoing is a true and correct Schedule, showing the valuation of all the taxable property, in the Town of Sylvan, in said County, the several rates of Taxation and Totals of the several Tax Funds levied thereon for the year A. D. 1958.

Witness my hand and official seal, this 19th day of January A. D. 1959

L. C. Peterson
County Auditor

By Helen Buller, Deputy



COLLECTIONS OF TAXES OF 1958

Town OF *Sylvan*, CASS COUNTY, MINNESOTA

FUNDS	MARCH SETTLEMENT 1957	JUNE SETTLEMENT 1957	NOV. SETTLEMENT 1957	Amount Collected from Nov. 15, 57, to First Monday in Jan. 1958	REDUCTIONS	Total Reductions and Collected	BALANCE UNCOLLECTED	ADDITIONS	Total Uncollected to First Monday in January, 1958
State-Non-Homestead	4225	30081	5710	14					
State-Homestead	3959	45145	35885	143					
County Revenue	19974	226032	179670	718					
County Road and Bridge	10142	114776	91234	364					
County Welfare	34944	395442	314332	1256					
County Bond and Interest									
R. + B. Fed. Proj.	3380	38259	30411	121					
Co. Nurse	1353	15303	12165	49					
R. + B. Bldg.	1353	15303	12165	49					
Town Revenue	920	10406	8272	33					
Town Road and Bridge	11495	130080	103399	413					
Town Drag	676	7652	6082	24					
Town State Loan									
School Local 1 Mill	676	7652	6082	24					
School Special	25234	324297	261501	662					
School State Loan									
Deficiency	39894	451453	358854	1434					
Tuition									
Transportation	980	11095	8820	35					
C.O.	1691	19129	15205	61					
PERA	440	4975	3954	15					
B. + D.	23084	261229	207649	831					
PERA Agri. Assn	2333 337	26398 3827	20984 3040	84 12					
	187120	2138534	1688414	6342					

	School District No.	LOCAL 1 MILL	SPECIAL	STATE LOAN	Deficiency	Transp.	C.O.	PERA	B. + D.	TOTALS
MARCH SETTLEMENT	116 a	343	8574		20235	497	858	223	11709	42439
	116 7a	333	16660		19659	423	833	217	11375	49560
	Totals	676	25234		39894	980	1691	440	23084	91999
JUNE SETTLEMENT	116 a	2332	58290		137565	3381	5829	1516	79600	288513
	116 7a	5320	266007		313888	7714	13300	3459	181629	791317
	Totals	7652	324297		451453	11095	19129	4975	261229	1079830
NOVEMBER SETTLEMENT	116 a	1904	42612		100565	2472	4261	1108	58192	210914
	116 7a	4378	218889		258289	6348	10944	2846	149457	651151
	Totals	6082	261501		358854	8820	15205	3954	207649	860265
NOVEMBER to JANUARY	116 a	22	552		1304	32	55	14	755	2734
	116 7a	02	110		130	03	06	01	76	328
	Totals	24	662		1434	35	61	15	831	3062
ADDITIONS										
REDUCTIONS										
	Totals									

133-30

Assessment Roll and Tax List of Real Property in the Town of Sylvan,

Indicate Type of Property: R-Residential, C-Commercial, I-Industrial, U-Utility, F-Farm, L-Lakeshore, T-Timber, M-Mineral

Form 3011

IN WHOSE NAME ASSESSED	TO WHOM TRANSFERRED	DESCRIPTION OF PROPERTY			No. School District	Indicate Homestead Yes or No	Indicate Agricultural Yes or No	Indicate Type of Property	TRUE AND FULL VALUATIONS					ASSESSED VALUATIONS						FINAL EQUALIZED VALUE				
		SUBDIVISION	Sec. of Lot	Town or Block					Number of Acres of Land	LAND Exclusive of Structures and Improvements	BUILDINGS and Other Structures	MACHINERY Permanently Attached to Real Estate	TOTAL True and Full Value	RURAL		ALL OTHER			TOTAL ASSESSED VALUE		Total Assessed Value as Equalized by the Board of Review			
														Acres	100ths	Homestead Up to \$4,000 20%	Over \$4,000 and Non-Homestead 33 1/3%	Timber Land Class 20%				Homestead Up to \$1,000 25%	Over \$4,000 and Non-Homestead 40%	MACHINERY Permanently Attached to Real Estate 33 1/3%
Adolph & Ethel Stank		NE 1/4 of NE 1/4 Lot 1	4-132-29	54 74	116		F	375	1100	1475	295					295								
		NW 1/4 of NE 1/4 Lot 1	5-132-29																					
		SW 1/4 of NE 1/4																						
		SE 1/4 of NE 1/4																						
		NE 1/4 of NW 1/4																						
		NW 1/4 of NW 1/4																						
		SW 1/4 of NW 1/4																						
		SE 1/4 of NW 1/4																						
		NE 1/4 of SW 1/4																						
		NW 1/4 of SW 1/4																						
		SW 1/4 of SW 1/4																						
		SE 1/4 of SW 1/4																						
		NE 1/4 of SE 1/4																						
		NW 1/4 of SE 1/4																						
		SW 1/4 of SE 1/4																						
		SE 1/4 of SE 1/4																						

Cass County, Minnesota, for Taxes for the Year 1958.

Instructions for 1959 books: No separation necessary, numbers together 1958 as added has been paid.

SOLD FOR TAXES	VALUATIONS BY SCHOOL DISTRICTS AS EQUALIZED BY DEPARTMENT OF TAXATION						Tax Including State Homestead	State Tax on Non-Homestead	SPECIAL TAXES	TOTAL TAXES	PAID	WHEN PAID	Number of Receipt	March Settlement 1959	June Settlement 1959	Penalty	November Settlement 1959	Penalty	Collections to First Monday in January 1960	Penalty	Delinquent on First Monday in January 1960	Total Delinquent Tax and Penalty	REMARKS
	District No.	District Rate	District No.	District Rate	District No.	District Rate																	
																	
	Mills	Mills	Mills	Mills	Mills	Mills																	
	Dollars	Dollars	Dollars	Dollars	Dollars	Dollars																	
1		# 295					76 16		76 16		PAID IN FULL JUN 30 1959	119 34					76 16	1 14					
2																							
3																							
4																							
5																							
6																							
7																							
8																							
9																							
10																							
11																							
12																							
13																							
14																							
15																							
16																							
17																							
18																							
19																							
20																							

133-29
Cass County, Minnesota
133-30

Assessment Roll and Tax List of Real Property in the Town of Sylvan of Sylvan County, Minnesota

Indicate Type of Property: R-Residential, C-Commercial, I-Industrial, U-Utility, F-Farm, L-Lakeshore, T-Timber, M-Mineral

Table with columns: IN WHOSE NAME ASSESSED, TO WHOM TRANSFERRED, DESCRIPTION OF PROPERTY, TRUE AND FULL VALUATIONS, ASSESSED VALUATIONS, and FINAL EQUALIZED VALUE. Includes handwritten entries for Chas. G. & Caroline Peterson, Harold Selvig & Irene Peterson, George & Lucy Clark, Brower & Laura Peterson, Emily & John W. Peterson, and Minnesota Power & Light Co.

Cass County, Minnesota, for Taxes for the Year 1958.

Table with columns: VALUATIONS BY SCHOOL DISTRICTS AS EQUALIZED BY DEPARTMENT OF TAXATION, Tax including State Homestead, State Tax on Non-Homestead, SPECIAL TAXES, TOTAL TAXES, PAID, WHEN PAID, Number of Receipt, March Settlement 1959, June Settlement 1959, Penalty, November Settlement 1959, Penalty, Collections to First Monday in January 1960, Penalty, Delinquent on First Monday in January 1960, Total Delinquent Tax and Penalty, and REMARKS. Includes handwritten entries for various districts and tax amounts.

Assessment Roll and Tax List of Real Property in the Town of *Sylva* of *Sylvania*

Indicate Type of Property: R-Residential, C-Commercial, I-Industrial, U-Utility, F-Farm, L-Lakeshore, T-Timber, M-Mineral

Table with columns: IN WHOSE NAME ASSESSED, TO WHOM TRANSFERRED, DESCRIPTION OF PROPERTY, TRUE AND FULL VALUATIONS, ASSESSED VALUATIONS, and FINAL EQUALIZED VALUE. Includes handwritten entries for John & Myrtle R. Gratsud, Charles G. & Caroline Peterson, Ella Gardine, and Brower Peterson.

Cass County, Minnesota, for Taxes for the Year 1958.

Table with columns: SOLD FOR TAXES, VALUATIONS BY SCHOOL DISTRICTS AS EQUALIZED BY DEPARTMENT OF TAXATION, Tax including State Homestead, State Tax on Non-Homestead, SPECIAL TAXES, TOTAL TAXES, PAID, WHEN PAID, Number of Receipt, March Settlement 1959, June Settlement 1959, Penalty, November Settlement 1959, Penalty, Collections to First Monday in January 1960, Penalty, Delinquent on First Monday in January 1960, Total Delinquent Tax and Penalty, and REMARKS. Includes handwritten entries for tax payments and settlements.

133-29

133-30

Vertical text on the right edge of the page, including 'Cass County, Minnesota' and 'Sylvania'.

Assessment Roll and Tax List of Real Property in the Town of Sylvan

Indicate Type of Property: R-Residential, C-Commercial, I-Industrial, U-Utility, F-Farm, L-Lakeshore, T-Timber, M-Mineral

Table with columns: IN WHOSE NAME ASSESSED, TO WHOM TRANSFERRED, DESCRIPTION OF PROPERTY, TRUE AND FULL VALUATIONS, ASSESSED VALUATIONS, FINAL EQUALIZED VALUE. Includes handwritten entries for Brower & Laura Peterson, Ella Nordine, Barney & Edwin Ostens, and State of Minnesota.

Cass County, Minnesota, for Taxes for the Year 1958.

#2

Table with columns: VALUATIONS BY SCHOOL DISTRICTS AS EQUALIZED BY DEPARTMENT OF TAXATION, Tax Including State Homestead, State Tax on Non-Homestead, SPECIAL TAXES, TOTAL TAXES, PAID, WHEN PAID, Number of Receipt, March Settlement 1959, June Settlement 1959, Penalty, November Settlement 1959, Penalty, Collections to First Monday in January 1960, Penalty, Delinquent on First Monday in January 1960, Total Delinquent Tax and Penalty, REMARKS. Includes handwritten entries for tax payments and dates.

133-29

133-30

Vertical text on the right edge of the page, including 'Cass County, Minnesota' and 'Sylvan'.

Assessment Roll and Tax List of Real Property in the Town of Sylva, Cass County, Minnesota

Indicate Type of Property: R-Residential, C-Commercial, I-Industrial, U-Utility, F-Farm, L-Lakeshore, T-Timber, M-Mineral

Cass County, Minnesota, for Taxes for the Year 1958.

Table with columns: IN WHOSE NAME ASSESSED, TO WHOM TRANSFERRED, DESCRIPTION OF PROPERTY, TRUE AND FULL VALUATIONS, ASSESSED VALUATIONS, FINAL EQUALIZED VALUE. Includes handwritten entries for property owners like 'Wm. H. Stubb & Laura Peterson' and 'Albert A. Dykema'.

Table with columns: VALUATIONS BY SCHOOL DISTRICTS AS EQUALIZED BY DEPARTMENT OF TAXATION, TAX INCLUDING STATE HOMESTEAD, SPECIAL TAXES, TOTAL TAXES, PAID, WHEN PAID, Number of Receipt, March Settlement 1959, June Settlement 1959, Penalty, November Settlement 1959, Penalty, Collections to First Monday in January 1960, Penalty, Delinquent on First Monday in January 1960, Total Delinquent Tax and Penalty, REMARKS. Includes handwritten entries for tax payments and dates.

133-29

133-30

Handwritten summary calculations at the bottom of the first table, including totals for assessed values and taxes.

Vertical text on the right edge of the page, possibly a page number or reference.

Assessment Roll and Tax List of Real Property in the Town of Sylvan, Cass County, Minnesota, for Taxes for the Year 1958.

Cass County, Minnesota, for Taxes for the Year 1958.

Indicate Type of Property: R-Residential, C-Commercial, I-Industrial, U-Utility, F-Farm, L-Lakeshore, T-Timber, M-Mineral

#2

Table with columns: IN WHOSE NAME ASSESSED, TO WHOM TRANSFERRED, SUBDIVISION, TRUE AND FULL VALUATIONS, ASSESSED VALUATIONS, VALUATIONS BY SCHOOL DISTRICTS AS EQUALIZED BY DEPARTMENT OF TAXATION, TAXES, PAID, WHEN PAID, Number of Receipt, March Settlement, June Settlement, Penalty, November Settlement, Collections to First Monday in January 1960, Delinquent on First Monday in January 1960, Total Delinquent Tax and Penalty, REMARKS.

133-29

133-30

Assessment Roll and Tax List of Real Property in the Town of Sylvan, Cass County, Minnesota, for Taxes for the Year 1958.

Assessment Roll and Tax List of Real Property in the Town of Sylvan

Indicate Type of Property: R-Residential, C-Commercial, I-Industrial, U-Utility, F-Farm, L-Lakeshore, T-Timber, M-Mineral

Table with columns: IN WHOSE NAME ASSESSED, TO WHOM TRANSFERRED, DESCRIPTION OF PROPERTY, TRUE AND FULL VALUATIONS, ASSESSED VALUATIONS, FINAL EQUALIZED VALUE.

Cass County, Minnesota, for Taxes for the Year 1958.

Table with columns: VALUATIONS BY SCHOOL DISTRICTS AS EQUALIZED BY DEPARTMENT OF TAXATION, Tax including State Homestead, State Tax on Non-Homestead, SPECIAL TAXES, TOTAL TAXES, PAID, WHEN PAID, Number of Receipt, March Settlement, June Settlement, Penalty, November Settlement, Penalty, Collections to First Monday in January 1960, Delinquent on First Monday in January 1960, Total Delinquent Tax and Penalty, REMARKS.

133-29

133-30

Vertical text on the right edge of the page, including 'Sylvan School Village of Sylvan' and 'Cass County, Minnesota'.

Assessment Roll and Tax List of Real Property in the Town of Lybourn

Indicate Type of Property: R-Residential, C-Commercial, I-Industrial, U-Utility, F-Farm, L-Lakeshore, T-Timber, M-Mineral

Table with columns: IN WHOSE NAME ASSESSED, DESCRIPTION OF PROPERTY, TRUE AND FULL VALUATIONS, ASSESSED VALUATIONS, FINAL EQUALIZED VALUE. Includes handwritten entries for John A. Miller, Minnesota Power & Light Co., etc.

Continued Next Page

Cass County, Minnesota, for Taxes for the Year 1958.

Table with columns: VALUATIONS BY SCHOOL DISTRICTS AS EQUALIZED BY DEPARTMENT OF TAXATION, TAX INCLUDING STATE HOMESTEAD, SPECIAL TAXES, TOTAL TAXES, PAID, WHEN PAID, Number of Receipt, March Settlement 1959, June Settlement 1959, November Settlement 1959, Collections to First Monday in January 1960, Delinquent on First Monday in January 1960, Total Delinquent Tax and Penalty, REMARKS. Includes handwritten entries for #21 and #22.

133-30

North 5717m

Centering 5717m

Centering 5717m

ist of Real Property in the Town of Sylvan

* Indicate Type of Property: R-Residential, C-Commercial, I-Industrial, U-Utility, F-Farm, L-Lakeshore, T-Timber, M-Mineral

Table with columns: IN WHOSE NAME ASSESSED, TO WHOM TRANSFERRED, SUBDIVISION, TRUE AND FULL VALUATIONS, ASSESSED VALUATIONS, FINAL EQUALIZED VALUE. Includes handwritten entries for John A. Miller, Minnesota Power & Light Co., Home, Alvin & Emily Lindell, Cuyuna Range Power Co., Martin J. & Bertha A. Phillips, Guy G. & Mahel Smith, W. H. & Inez Palmer, Minnesota Power & Light Co., State of Minnesota, Albert J. Cunningham, Minnesota Power & Light Co.

Continued Next Page

Cass County, Minnesota, for Taxes for the Year 1958.

Table with columns: VALUATIONS BY SCHOOL DISTRICTS AS EQUALIZED BY DEPARTMENT OF TAXATION, Tax including State Homestead, SPECIAL TAXES, TOTAL TAXES, PAID, WHEN PAID, Number of Receipt, March Settlement 1959, June Settlement 1959, November Settlement 1959, Penalty, Collections to First Monday in January 1960, Delinquent on First Monday in January 1960, Total Delinquent Tax and Penalty, REMARKS. Includes handwritten entries for John A. Miller, Minnesota Power & Light Co., Home, Alvin & Emily Lindell, Cuyuna Range Power Co., Martin J. & Bertha A. Phillips, Guy G. & Mahel Smith, W. H. & Inez Palmer, Minnesota Power & Light Co., State of Minnesota, Albert J. Cunningham, Minnesota Power & Light Co.

Vertical text on the right edge of the page, including 'Cass County, Minnesota' and 'North Sylvan'.

Assessment Roll and Tax List of Real Property in the Town of Sylvan

* Indicate Type of Property: R-Residential, C-Commercial, I-Industrial, U-Utility, F-Farm, L-Lakeshore, T-Timber, M-Mineral

IN WHOSE NAME ASSESSED	TO WHOM TRANSFERRED	DESCRIPTION OF PROPERTY			No. School District	Indicate Homestead Tax No.	Indicate Agricultural Tax No.	Indicate Type of Property	TRUE AND FULL VALUATIONS								Total Assessed Value as Equalized by the Board of Review	FINAL EQUALIZED VALUE		
		SUBDIVISION	Sec or Lot	Town or Block					Number of Acres of Land	LAND Exclusive of Structures and Improvements	BUILDINGS and Other Structures	MACHINERY Permanently Attached to Real Estate	TOTAL True and Full Value	ASSESSED VALUATIONS					TOTAL ASSESSED VALUE	
														RURAL	ALL OTHER					
Minnesota Power & Light Co. State of Minnesota		1/4 sec of NE 1/4 of NE 1/4	17	133	29	20	116	70	4	T	180				180	60				
		2 1/4 sec of NW 1/4 of NE 1/4																		
		3 SW 1/4 of NE 1/4																		
		4 SE 1/4 of NE 1/4																		
Norman & Emily J. Sindall		5.15 ac. of E 1/2 of NE 1/4 of NE 1/4				375					500	75		125	25					
Harry Sechler		6 ac. of NE 1/4 of NW 1/4 less 1/4 ac. Reg.				160				R	60	350		410	82					
State of Minnesota Roger R. & Emma Peterson		1 ac. of NW 1/4 of NE 1/4																		
		NE 1/4 of SW 1/4																		
		NW 1/4 of SW 1/4																		
		SW 1/4 of SW 1/4																		
		SE 1/4 of SW 1/4																		
		202' of E 1/2 of NE 1/4 of NE 1/4																		
Gull River Cemetery Assn.		NE 1/4 of SE 1/4																		
		NW 1/4 of SE 1/4																		
		SW 1/4 of SE 1/4																		
		SE 1/4 of SE 1/4																		

270 425 915 109 60 167

Cass County, Minnesota, for Taxes for the Year 1958.

SOLD FOR TAXES	VALUATIONS BY SCHOOL DISTRICTS AS EQUALIZED BY DEPARTMENT OF TAXATION						Tax Including State Homestead	State Tax on Non-Homestead	SPECIAL TAXES	TOTAL TAXES	PAID	WHEN PAID	Number of Receipt	March Settlement 1959	June Settlement 1959	Penalty	November Settlement 1959	Penalty	Collections to First Monday in January 1960	Penalty	Delinquent on First Monday in January 1960	Total Delinquent Tax and Penalty	REMARKS
	District No.	District No.	District No.	District No.	District No.	District No.																	
	Rate	Rate	Rate	Rate	Rate	Rate																	
1							60	1550	40	1590	1st Half Paid	NOV 2 1959	12576		795								
2																							
3																							
4																							
5								25	908	208	PAID IN FULL	SEPT 1 1959	12726										
6								82	2322	2322	PAID IN FULL	MAY 29 1959	1283		2322								
7																							
8																							
9																							
10																							
11																							
12																							
13																							
14																							
15																							
16																							
17																							
18																							
19																							
20																							

60 #107 = 107 1550 3030 40 4620 3177 1400 4580

133-28

133-30

North Sylvan

Assessing Sylvan Data

Assessment Roll and Tax List of Real Property in the Town of Sylva, County of Sylva, State of Minnesota

Indicate Type of Property: R-Residential, C-Commercial, I-Industrial, U-Utility, F-Farm, L-Lakeshore, T-Timber, M-Mineral

Table with columns: IN WHOSE NAME ASSESSED, TO WHOM TRANSFERRED, DESCRIPTION OF PROPERTY, TRUE AND FULL VALUATIONS, ASSESSED VALUATIONS, and FINAL EQUALIZED VALUE. Includes handwritten entries for Clyde & Thelma Barber, Brower & Laura Peterson, Charles R. Woodhouse, and Minnesota Power & Light Co.

Cass County, Minnesota, for Taxes for the Year 1958

#2

Table with columns: VALUATIONS BY SCHOOL DISTRICTS AS EQUALIZED BY DEPARTMENT OF TAXATION, Tax including State Homestead, State Tax on Non-Homestead, SPECIAL TAXES, TOTAL TAXES, PAID, WHEN PAID, Number of Receipt, March Settlement 1959, June Settlement 1959, November Settlement 1959, Penalty, Collections to First Monday in January 1960, Delinquent on First Monday in January 1960, Total Delinquent Tax and Penalty, and REMARKS. Includes handwritten entries for tax payments and dates.

133-29

133-30

Vertical text on the right edge of the page, including 'Sylva' and 'Cass County'.

Assessment Roll and Tax List of Real Property in the Town of Sylvan

Indicate Type of Property: R-Residential, C-Commercial, I-Industrial, U-Utility, F-Farm, L-Lakeshore, T-Timber, M-Mineral

Table with columns: IN WHOSE NAME ASSESSED, TO WHOM TRANSFERRED, DESCRIPTION OF PROPERTY, TRUE AND FULL VALUATIONS, ASSESSED VALUATIONS, and FINAL EQUALIZED VALUE. Includes handwritten entries for various property owners like Minnesota Power & Light Co., Roy G. & Eva Shore, J. F. & Ellen J. Marlow, etc.

Cass County, Minnesota, for Taxes for the Year 1958.

Table with columns: VALUATIONS BY SCHOOL DISTRICTS AS EQUALIZED BY DEPARTMENT OF TAXATION, Tax including State Homestead, State Tax on Non-Homestead, SPECIAL TAXES, TOTAL TAXES, PAID, WHEN PAID, Number of Receipt, March Settlement 1959, June Settlement 1959, Penalty, November Settlement 1959, Penalty, Collections to First Monday in January 1960, Delinquent on First Monday in January 1960, Total Delinquent Tax and Penalty, REMARKS. Includes handwritten entries for various districts and tax amounts.

Assessment Roll and Tax List of Real Property in the Town of Sylvan

Indicate Type of Property: R-Residential, C-Commercial, I-Industrial, U-Utility, F-Farm, L-Lakeshore, T-Timber, M-Mineral

Main assessment table with columns: IN WHOSE NAME ASSESSED, TO WHOM TRANSFERRED, DESCRIPTION OF PROPERTY, TRUE AND FULL VALUATIONS, ASSESSED VALUATIONS, and FINAL EQUALIZED VALUE.

Cass County, Minnesota, for Taxes for the Year 1958.

Tax and payment table with columns: VALUATIONS BY SCHOOL DISTRICTS AS EQUALIZED BY DEPARTMENT OF TAXATION, Tax including State Homestead, State Tax on Non-Homestead, SPECIAL TAXES, TOTAL TAXES, PAID, WHEN PAID, Number of Receipt, March Settlement 1959, June Settlement 1959, Penalty, November Settlement 1959, Penalty, Collections to First Monday in January 1960, Penalty, Delinquent on First Monday in January 1960, Total Delinquent Tax and Penalty, REMARKS.

133-29

133-30

Land & All other property in Sylvan and North Sylvan Cass County, Minnesota

Assessment Roll and Tax List of Real Property in the Town of Sylvan

Cass County, Minnesota, for Taxes for the Year 1958.

Indicate Type of Property: R-Residential, C-Commercial, I-Industrial, U-Utility, F-Farm, L-Lakeshore, T-Timber, M-Mineral

Table with columns: IN WHOSE NAME ASSESSED, TO WHOM TRANSFERRED, DESCRIPTION OF PROPERTY, TRUE AND FULL VALUATIONS, ASSESSED VALUATIONS, and FINAL EQUALIZED VALUE.

Table with columns: VALUATIONS BY SCHOOL DISTRICTS AS EQUALIZED BY DEPARTMENT OF TAXATION, TAXES, PAID, WHEN PAID, Number of Receipt, March Settlement, June Settlement, November Settlement, Collections to First Monday in January, Delinquent on First Monday in January, Total Delinquent Tax and Penalty, and REMARKS.

133-28

133-30

Vertical text on the right edge of the page, including 'Sylvan Village of Sylvan' and 'Cass County, Minnesota'.

Assessment Roll and Tax List of Real Property in the Town of Sylvan

Indicate Type of Property: R-Residential, C-Commercial, I-Industrial, U-Utility, F-Farm, L-Lakeshore, T-Timber, M-Mineral

Table with columns: IN WHOSE NAME ASSESSED, TO WHOM TRANSFERRED, DESCRIPTION OF PROPERTY, TRUE AND FULL VALUATIONS, ASSESSED VALUATIONS, and FINAL EQUALIZED VALUE.

Cass County, Minnesota, for Taxes for the Year 1958.

Table with columns: VALUATIONS BY SCHOOL DISTRICTS AS EQUALIZED BY DEPARTMENT OF TAXATION, Tax Including State Homestead, State Tax on Non-Homestead, SPECIAL TAXES, TOTAL TAXES, PAID, WHEN PAID, Number of Receipt, March Settlement 1959, June Settlement 1959, Penalty, November Settlement 1959, Penalty, Collections to First Monday in January 1960, Delinquent on First Monday in January 1960, Total Delinquent Tax and Penalty, REMARKS.

133-29

133-30

Vertical text on the right edge of the page, including 'Cass County, Minnesota' and 'Sylvan'.

Assessment Roll and Tax List of Real Property in the Town of Sylvan

Indicate Type of Property: R-Residential, C-Commercial, I-Industrial, U-Utility, F-Farm, L-Lakeshore, T-Timber, M-Mineral

Cass County, Minnesota, for Taxes for the Year 1958.

Table with columns: IN WHOSE NAME ASSESSED, TO WHOM TRANSFERRED, SUBDIVISION, TRUE AND FULL VALUATIONS, ASSESSED VALUATIONS, and FINAL EQUALIZED VALUE. Includes handwritten entries for Adolph Ethel Stauls, Dewey McMain, W.W. Paper Co., and John E. & Vivian S. Eastman.

No separation required for #1 + #2 - line #13.

Table with columns: SOLD FOR TAXES, VALUATIONS BY SCHOOL DISTRICTS AS EQUALIZED BY DEPARTMENT OF TAXATION, SPECIAL TAXES, TOTAL TAXES, PAID, WHEN PAID, March Settlement, June Settlement, November Settlement, Penalty, Collections to First Monday in January 1960, Delinquent on First Monday in January 1960, Total Delinquent Tax and Penalty, and REMARKS.

133-30

Village of Sylvan

Sylvan

* Indicate Type of Property: R-Residential, C-Commercial, I-Industrial, U-Utility, F-Farm, L-Lakeshore, T-Timber, M-Mineral

Table with columns: IN WHOSE NAME ASSESSED, TO WHOM TRANSFERRED, DESCRIPTION OF PROPERTY, TRUE AND FULL VALUATIONS, ASSESSED VALUATIONS, FINAL EQUALIZED VALUE.

Table with columns: VALUATIONS BY SCHOOL DISTRICTS AS EQUALIZED BY DEPARTMENT OF TAXATION, TAXES, PAID, WHEN PAID, Number of Receipt, March Settlement 1959, June Settlement 1959, November Settlement 1959, Collections to First Monday in January 1960, Delinquent on First Monday in January 1960, Total Delinquent Tax and Penalty.

Assessment Roll and Tax List of Real Property in the Town of Sylvia of Sylvania

Indicate Type of Property: R-Residential, C-Commercial, I-Industrial, U-Utility, F-Farm, L-Lakeshore, T-Timber, M-Mineral

Cass County, Minnesota, for Taxes for the Year 1958.

IN WHOSE NAME ASSESSED	TO WHOM TRANSFERRED	DESCRIPTION OF PROPERTY				No. School District	Indicate Homestead Yes or No	Indicate Agricultural Yes or No	Indicate Type of Property	TRUE AND FULL VALUATIONS				ASSESSED VALUATIONS						FINAL EQUALIZED VALUE	
		SUBDIVISION	Sec. or Lot	Town or Block	Rtg.					Number of Acres of Land	MACHINERY Permanently Attached to Real Estate	TOTAL True and Full Value	RURAL		ALL OTHER		MACHINERY Permanently Attached to Real Estate	TOTAL ASSESSED VALUE	Total Assessed Value as Equalized by the Board of Review		
													Acres	100ths	Homestead Up to \$4,000 20%	Over \$4,000 and Non-Homestead 33 1/3%					Timber Land Class 3e 20%
									Dollars	Dollars	Dollars	Dollars	Dollars	Dollars	Dollars	Dollars	Dollars	Dollars	Dollars	Dollars	
		NE 1/4 of NE 1/4			22 138 29																
		NW 1/4 of NE 1/4																			
		SW 1/4 of NE 1/4																			
		SE 1/4 of NE 1/4																			
State of Minnesota		Lots 3																			
		NE 1/4 of NW 1/4																			
		NW 1/4 of NW 1/4																			
		SW 1/4 of NW 1/4																			
		SE 1/4 of NW 1/4																			
		NE 1/4 of SW 1/4																			
		NW 1/4 of SW 1/4																			
		SW 1/4 of SW 1/4																			
		SE 1/4 of SW 1/4																			
		NE 1/4 of SE 1/4																			
		NW 1/4 of SE 1/4																			
		SW 1/4 of SE 1/4																			
		SE 1/4 of SE 1/4																			

SOLD FOR TAXES	VALUATIONS BY SCHOOL DISTRICTS AS EQUALIZED BY DEPARTMENT OF TAXATION						Tax including State Homestead	State Tax on Non-Homestead	SPECIAL TAXES	TOTAL TAXES	PAID	WHEN PAID	Number of Receipt	March Settlement 1959	June Settlement 1959	Penalty	November Settlement 1959	Penalty	Collections to First Monday in January 1960	Penalty	Delinquent on First Monday in January 1960	Total Delinquent Tax and Penalty	REMARKS
	District No.	District Rate	District No.	District Rate	District No.	District Rate																	
	Dollars	Mills	Dollars	Mills	Dollars	Mills																	

133-29

133-30

Land & Allerton's 1st Sylvia School District of Sylvia North Sylvia Carlson's Sylvia

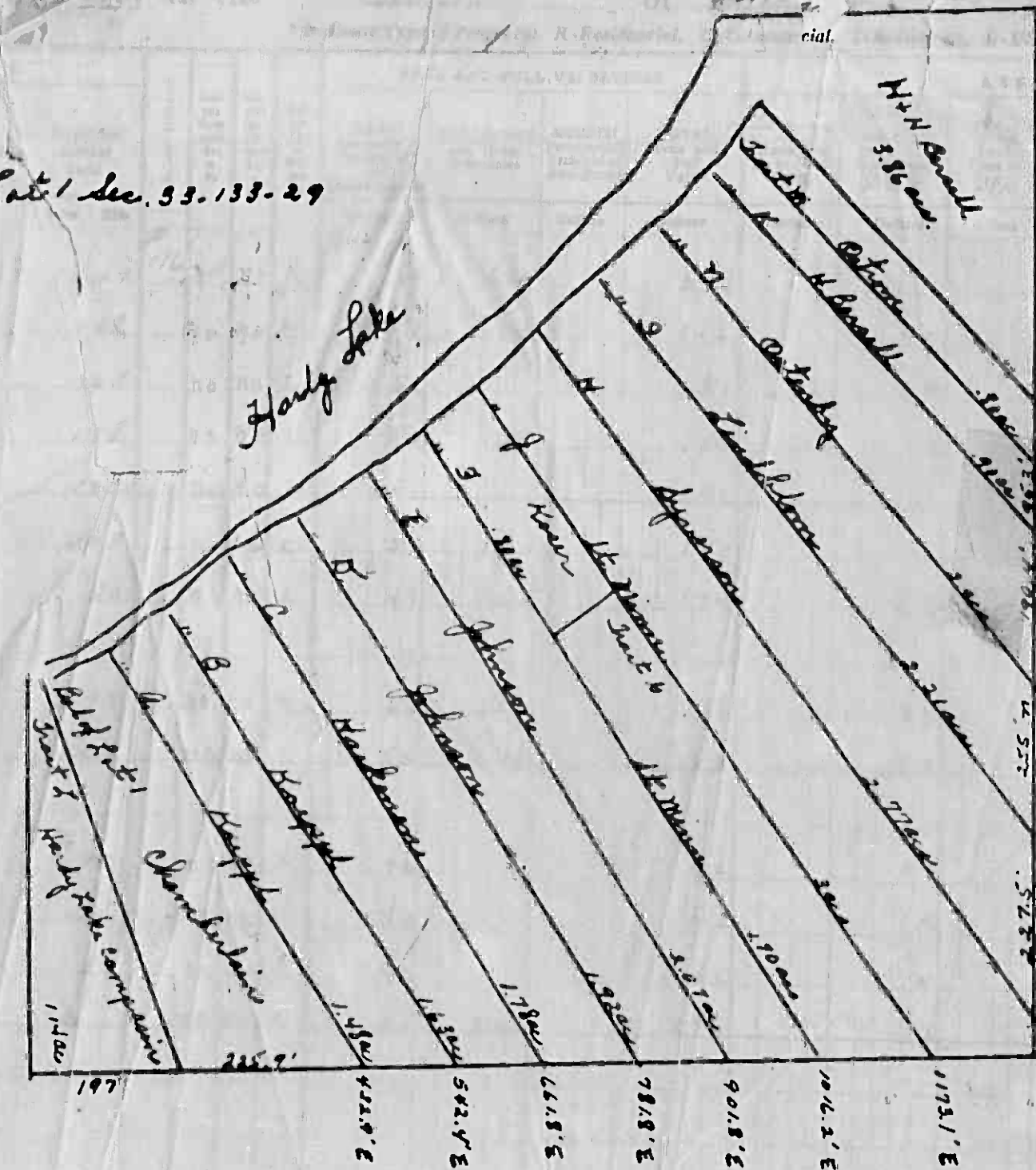
Form 500

IN WHOSE NAME ASSESSED TO WHOM TRANSFERRED

Michael A. & Olga A. Chamberlain
 Joseph Kaupp
 Edward & Susan Hekkenens
 Russell K. & Hilma Griswald
 Merrill & Inez Koser
 State of Minnesota
 Julius & Anna Svensson
 Conrad E. & Elsa M. Lindblom
 State of Minnesota Patrick J. & Irene M. Dow
 Donald H. & Leone Berall
 Hardy Lake Camp Assn. Inc.
 Hilding J. & Eunice E. Ostrom
 Elvira & Vernore E. Peterson

Hugo & Hilda Berall
 Continued Next Page

Lat 1 Sec. 33. 133-29



11731
10162
1369

Land, L-Lakeshore, T-Timber, M-Mineral

VALUATIONS				
OTHER	MACHINERY	TOTAL	Total Assessed	FINAL
Over \$4,000 and Non- Homestead 40%	Permanently Attached to Real Estate 33 7/8 %	ASSESSED VALUE	Value as Equalized by the Board of Review	EQUALIZED VALUE
Dollars	Dollars	Dollars	Dollars	Dollars

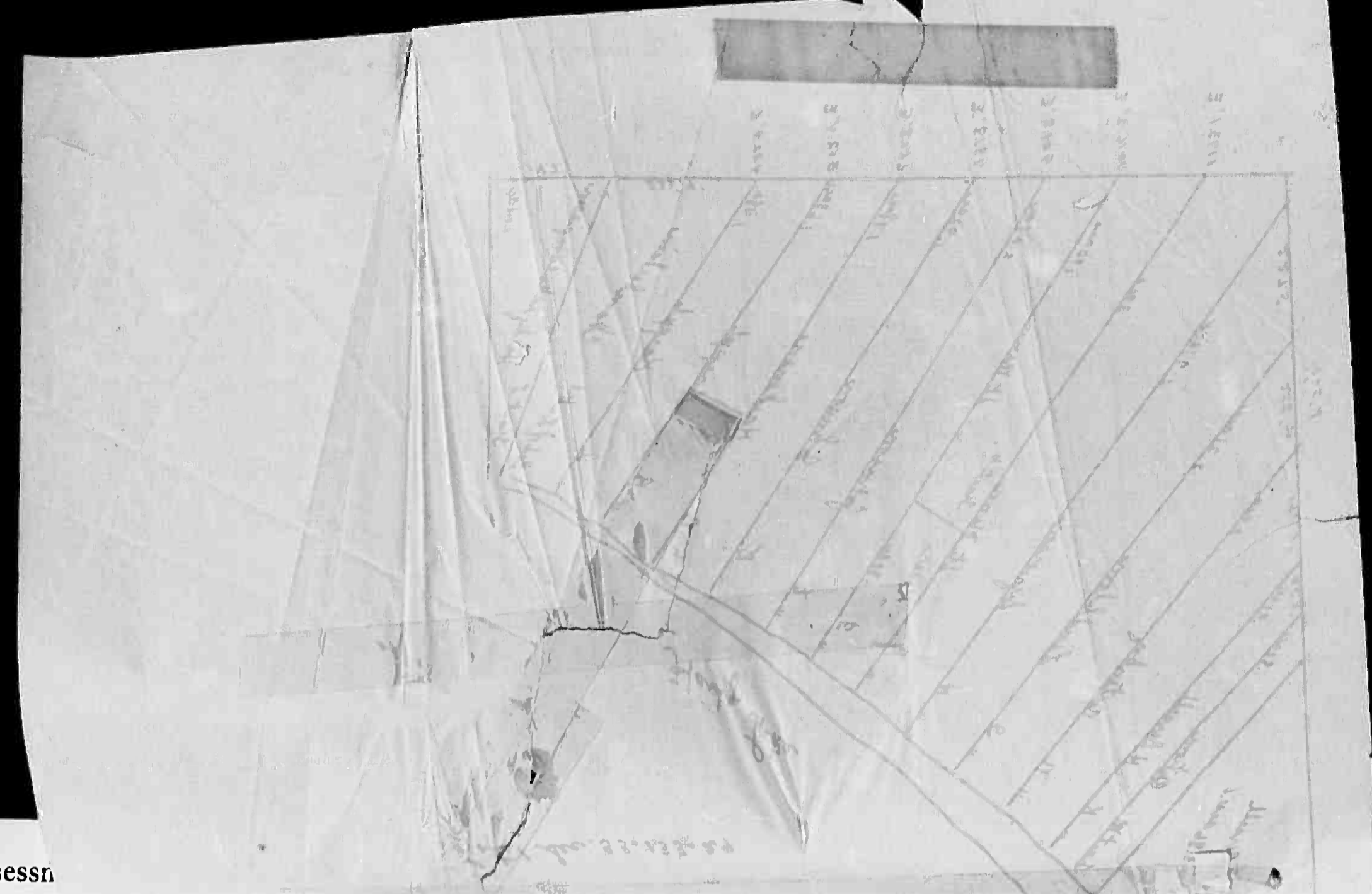
			115	
			42	
			17	
			50	
			17	
			50	
			58	
			89	
			89	
			14	
			14	
			14	
			92	
			67	
			724	

727 1815 2542 182 544

SOLD FOR TAXES	VALUATIONS BY SCHOOL DISTRICTS AS EQUALIZED BY DEPARTMENT OF TAXATION						Tax Including State Homestead	State Tax on Non-Homestead	SPECIAL TAXES	TOTAL TAXES	PAID	WHEN PAID	Number of Receipts	March Settlement 1959	June Settlement 1959	Penalty	November Settlement 1959	Penalty	Collections to First Monday in January 1960	Penalty	Delinquent on First Monday in January 1960	Total Delinquent Tax and Penalty	REMARKS
	District No.	District No.	District No.	District No.	District No.	District No.																	
	Rate	Rate	Rate	Rate	Rate	Rate																	
	Mills	Mills	Mills	Mills	Mills	Mills																	
1						\$ 115			32 56		PAID IN FULL APR 30 1959	5798		32 56								21556	
2						42			1190	28	PAID IN FULL APR 29 1959	5797		12 18								11552	
3						17			482	12	PAID IN FULL APR 20 1959			4 94									
4						50			1416	32	PAID IN FULL MAY 29 1959	10456		14 48								11544	
5						17			482	12	PAID IN FULL MAY 29 1959			4 94									
6						50			1416	32	PAID IN FULL MAY 29 1959			14 48									
7						58			1642	38	PAID IN FULL MAY 1 1959	8953		16 80									
8																							
9						89			2464	56	PAID IN FULL MAY 29 1959	11313		25 20								11553	
10						89			2520	58	PAID IN FULL MAY 29 1959	11312		25 78								11557	
11																							
12						14			396	10	PAID IN FULL MAY 16 1959	8952		4 06								11559	
13						14			396	10											4 06		
14						14			396	10	PAID IN FULL APR 15 1959	5313		4 06								11561	
15						92			2666	60	PAID IN FULL APR 28 1959	5757		26 66								11547	
16																							
17																							
18																							
19																							
20						67			1898		PAID IN FULL JUN 30 1959	11387		18 98								11562	
						544			20560	358	PAID IN FULL JUN 1 1959	18466		18 98								11563	
						726			20918					186 14								11564	

Penalty JUN 30 1959 11387
PAID IN FULL JUN 1 1959 18466

pen. due 28 11564



Form, L-Lakeshore, T-Timber, M-Mineral

IN WHOSE NAME ASSESSED	TO WHOM TRANSFERRED	DESCRIPTION OF PROPERTY		TRUE AND FULL VALUATIONS										FINAL EQUALIZED VALUE	
		SUBDIVISION	Acres	No. of Lots	Ind. No.	Ind. Type	Ind. No.	Ind. Type	ASSESSED VALUATIONS				TOTAL ASSESSED VALUE		Total Assessed Value as Furnished by the Board of Review
									LAND Excludes of Structures and Improvements	BUILDINGS and Other Structures	MACHINERY Permanently Attached to Real Estate	TOTAL True and Full Value			
Michael A. & Olga B. Chamberlain		5 1/2 ac. of Lot 1 - Tract A	2.17	116	400	700	R	50	525		575	115		115	
Joseph Kauppel		1.48 ac. of Lot 1 - Tract A	1.48		700	L	51	75		126		42		42	
"		1.63 ac. of Lot 1 - Tract B	1.63		700	L	51			51		17		17	
Edward & Susan Heikkinen		1.78 ac. of Lot 1 - Tract C	1.78		700	L	50	100		150		50		50	
Russell K. & Wilma Griswald		1.92 ac. of Lot 1 - Tract D	1.92		700	L	51			51		17		17	
"		2.07 ac. of Lot 1 - Tract E	2.07		700	L	50	100		150		50		50	
Merrill & Inez Koser		.8 ac. of Lot 1 - Tract F	.80		700	L	49	125		174		58		58	
State of Minnesota		1.70 ac. of Lot 1 - Tract B			700	L	61	200		261		87		87	
Julius & Anna Svenson		2.77 ac. of Lot 1 - Tract H	2.77		700	L	61	200		261		87		87	
Conrad E. & Elsa M. Sundblom		2.21 ac. of Lot 1 - Tract G	2.21		700	L	52	215		267		89		89	
State of Minnesota		3 ac. of Lot 1 - Tract J			700	L	42			42		14		14	
Donald N. & Irene Bersell		.90 ac. of Lot 1 - Tract K	.90		700	L	42			42		14		14	
Nardy Lake Camp Assn. Inc.		1.14 ac. of Lot 1 - Tract L	1.14		700	L	42			42		14		14	
Hilding J. & Eunice E. Osterrom		.80 ac. of Lot 1 - Tract M	.80		700	L	42			42		14		14	
Elvina & Vernon E. Peterson		2 ac. of Lot 1 - Tract N	2		700	L	51	225		276		92		92	
Hugo & Hilda Bersell		3.86 ac. of Lot 1	3.86		400	L	85	250		335	67			67	
							727	1815		2542	182	544		726	

Continued Next Page

Cass County, Minnesota, for Taxes for the Year 1958.

SOLD FOR TAXES	VALUATIONS BY SCHOOL DISTRICTS AS EQUALIZED BY DEPARTMENT OF TAXATION						Tax including State Homestead	State Tax on Non-Homestead	SPECIAL TAXES	TOTAL TAXES	PAID	WHEN PAID	Number of Receipt	March Settlement 1959	June Settlement 1959	Penalty	November Settlement 1959	Penalty	Collections to First Monday in January 1960	Penalty	Delinquent on First Monday in January 1960	Total Delinquent Tax and Penalty	REMARKS	
	District No.	District No.	District No.	District No.	District No.	District No.																		
	Rate	Rate	Rate	Rate	Rate	Rate																		
	115					32.56			32.56	1	PAID IN FULL	APR 20 1959	5798		32.56									
	42					11.90	28		12.18	2	PAID IN FULL	APR 29 1959	5797		12.18									
	17					4.82	12		4.94	3	PAID IN FULL	APR 20 1959			4.94									
SOLD FOR TAXES	50					14.16	32		14.48	4	PAID IN FULL	MAY 29 1959	11314		14.48									
SOLD FOR TAXES	17					4.82	12		4.94	5	PAID IN FULL	MAY 29 1959	10456		4.94									
SOLD FOR TAXES	50					14.16	32		14.48	6	PAID IN FULL	MAY 29 1959			14.48									
	58					16.42	38		16.80	7	PAID IN FULL	MAY 18 1959	8953		16.80									
	87					24.64	56		25.20	9	PAID IN FULL	MAY 29 1959	11313		25.20									
	89					25.20	58		25.78	10	PAID IN FULL	MAY 29 1959	11312		25.78									
	14					3.96	10		4.06	12	PAID IN FULL	MAY 16 1959	8952		4.06									
HOLD FOR TAXES	14					3.96	10		4.06	13												4.06		
	14					3.96	10		4.06	14	PAID IN FULL	APR 15 1959	5313		4.06									
	92					26.66	68		26.66	15	PAID IN FULL	APR 28 1959	5757		26.66									
	67					18.98			18.98	20	PAID IN FULL	JUN 30 1959	11357											
	182					205.60	358		209.8						186.14		18.98					4.06		
	726																							

Land & All Other Taxes

From Sewer Village of System

North System

and a ...

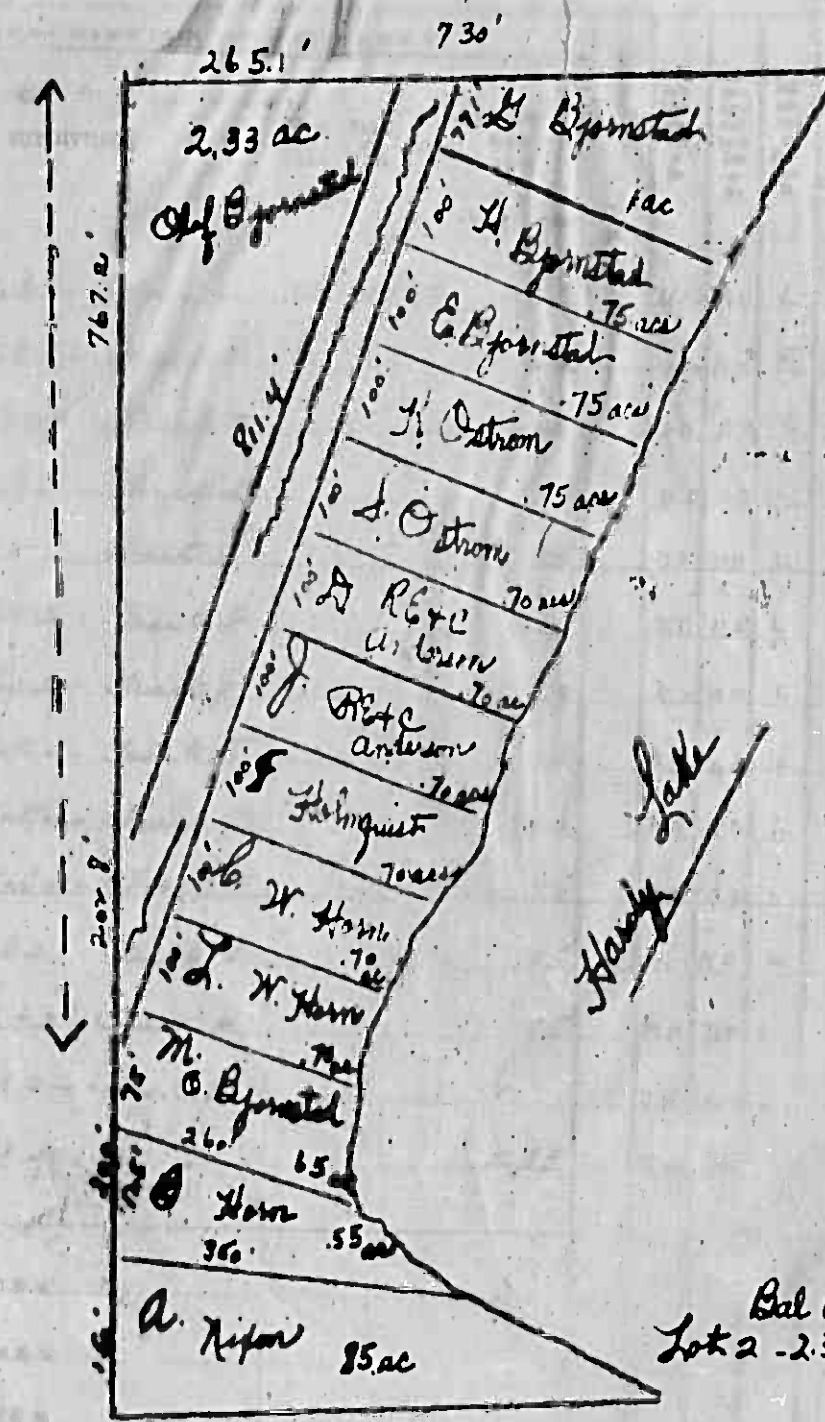
and a ...

IN WHOSE NAME ASSESSED TO WHOM TRANSFERRED

Acres

Allison N. & Esther T. Nilson	1	.85ac
Ralph E. & Carmelyte Anderson	2	.55ac
Walter B. & Wilhelmine H. Horn	3	.65ac
Claf Bjornstad	4	.70ac
" " "	5	.70ac
Herman Holmgquist	6	.70ac
Ralph E. & Carmelyte Anderson	7	.70ac
" " "	8	.70ac
Harry M. & Alice A. Ostrom	9	.70ac
" " "	10	.75ac
Claf Bjornstad	11	.75ac
" " "	12	.75ac
" " "	13	1.00ac
" " "	14	2.33ac
" " "	15	
" " "	16	N
" " "	17	N
" " "	18	S
" " "	19	S
" " "	20	

1	.85ac
2	.55ac
3	.65ac
4	.70ac
5	.70ac
6	.70ac
7	.70ac
8	.70ac
9	.70ac
10	.75ac
11	.75ac
12	.75ac
13	1.00ac
14	2.33ac
15	
16	N
17	N
18	S
19	S
20	



- A. Nilson
- B. Horn
- C. Bjornstad
- D. R.E. & L. Anderson
- E. Holmgquist
- F. Bjornstad
- G. Bjornstad
- H. M. & A. Ostrom
- I. R.E. & L. Anderson
- J. H. & L. Ostrom
- K. L. & H. Horn
- L. Bjornstad
- M. Bjornstad

11.83 acs
3.00 acs road

SCALE " 200
Govt LOT 2 Sec 33-133-29
The map drawn from
Map of State Records
Map of 2-9-53

VALUATIONS BY SCHOOL DISTRICTS AS EQUALIZED BY DEPARTMENT OF TAXATION			
DISTRICT	TOTAL ASSESSED VALUE	Total Assesed Value as Equalized by the Board of Review	FINAL EQUALIZED VALUE
No.	Dollars	Dollars	Dollars
1	120		
2	76		
3	12		
4	73		
5	12		
6	48		
7	15		
8	73		
9	48		
10	15		
11	23		
12	8		
13	10		
14	9		

SOLD FOR TAXES	TOTAL ASSESSED VALUE	Tax Including State Homestead	State Tax on Non-Homestead	SPECIAL TAXES	TOTAL TAXES
No.	Dollars	Dollars	Dollars	\$ cts.	\$ cts.
1	120		3398		3398
2	76		2152		2152
3	12		340	08	348
4	73		2068	48	2116
5	12		340	08	348
6	48		1360	32	1392
7	15		424	10	434
8	73		2068	48	2116
9	48		1360	32	1392
10	15		424	10	434
11	23		652	14	666
12	8		226	06	232
13	10		284	06	290
14	9		254	06	260
15					
16					
17					
18					
19					
20					

SOLD FOR TAXES	VALUATIONS BY SCHOOL DISTRICTS AS EQUALIZED BY DEPARTMENT OF TAXATION						Tax Including State Homestead	State Tax on Non-Homestead	SPECIAL TAXES	TOTAL TAXES	PAID	WHEN PAID	Number of Receipt	March Settlement 1959	June Settlement 1959	Penalty	November Settlement 1959	Penalty	Collections to First Monday in January 1960	Penalty	Delinquent on First Monday in January 1960	Total Delinquent Tax and Penalty	REMARKS
	District No.	District No.	District No.	District No.	District No.	District No.																	
	Rate	Rate	Rate	Rate	Rate	Rate																	
1	120								3398		PAID IN FULL	MAY 29 1959	10713		3398								
2	76								2152		PAID IN FULL	MAY 5 1959	2318		2152								
3	12								340	08	PAID IN FULL	FEB 4 1959	910	348									
4	73								2068	48	PAID IN FULL	MAY 6 1959	7259		2116								
5	12								340	08	PAID IN FULL	MAY 6 1959	7259		348								
6	48								1360	32	PAID IN FULL	MAY 19 1959	7924		1392								
7	15								424	10	PAID IN FULL	MAY 14 1959	7694		434								
8	73								2068	48	PAID IN FULL	MAY 14 1959	7694		2116								
9	48								1360	32	PAID IN FULL	MAY 25 1959	9267		1392								
10	15								424	10	PAID IN FULL	MAY 25 1959	9267		434								
11	23								652	14	PAID IN FULL	FEB 4 1958		666									
12	8								226	06	PAID IN FULL	FEB 4 1958	910	232									
13	10								284	06	PAID IN FULL	FEB 4 1958		290									
14	9								254	06	PAID IN FULL	FEB 4 1958	910	260									
15																							
16																							
17																							
18																							
19																							
20																							

Assessment Roll

IN WHOSE NAME ASSESSED	TO WHOM TRANSFERRED	DESCRIPTION OF PROPERTY				TRUE AND FULL VALUATIONS										Total Assessed Value as Equalized by the Board of Review	FINAL EQUALIZED VALUE		
		Subdivision	Sec. Lot	Town	Range	Number of Acres of Land	LAND Exclusive of Structures and Improvements	BUILDINGS and Other Structures	MACHINERY Permanently Attached to Real Estate	TOTAL True and Full Value	RURAL			ALL OTHER				MACHINERY Permanently Attached to Real Estate	TOTAL ASSESSED VALUE
		No. of School District				Acres	Dollars	Dollars	Dollars	Dollars	Dollars	Dollars	Dollars	Dollars	Dollars	Dollars	Dollars	Dollars	Dollars
Allison, H. & Esther K. Nixon		1	85 ac of Lot 2 - Tract C	33	133-29	85	50	520	600	120						120			
Walter B. & Wilhelmine H. Horn		2	55 ac of Lot 2 - Tract C			55	30	350	380	76						76			
Claf Sparstad		3	165 ac of Lot 2 - Tract M			65	36		36										
Walter B. & Wilhelmine Horn		4	70 ac of Lot 2 - Tract C			70	44	175	219							73			
"		5	70 ac of Lot 2 - Tract C			70	36		36							12			
Herman Holmquist		6	70 ac of Lot 2 - Tract F			70	44	100	144							48			
Ralph E. & Carmelyste Andersons		7	70 ac of Lot 2 - Tract F			70	45		45							15			
"		8	70 ac of Lot 2 - Tract D			70	44	175	219							73			
Harry W. & Alice A. Catron		9	70 ac of Lot 2 - Tract D			70	44	100	144							48			
"		10	75 ac of Lot 2 - Tract A			75	45		45							15			
Claf Sparstad		11	75 ac of Lot 2 - Tract E			75	45	24	69							23			
"		12	75 ac of Lot 2 - Tract H			75	24		24							8			
"		13	1 ac of Lot 2 - Tract G			1	30		30							10			
"		14	2.33 of Lot 2			2.33	27		27							9			
		15																	
		16	N E 1/4 of S E 1/4																
		17	N W 1/4 of S E 1/4																
		18	S W 1/4 of S E 1/4																
		19	S E 1/4 of S E 1/4																
		20																	

Continued Next Page

544 1474 2018 196 346 542

Cass County, Minnesota, for Taxes for the Year 1958.

SOLD FOR TAXES	VALUATIONS BY SCHOOL DISTRICTS AS EQUALIZED BY DEPARTMENT OF TAXATION						Tax including State Homestead	State Tax on Non-Homestead	SPECIAL TAXES	TOTAL TAXES	PAID	WHEN PAID	Number of Receipt	March Settlement 1959	June Settlement 1959	November Settlement 1959	Penalty	Collections to First Monday in January 1960	Penalty	Delinquent on First Monday in January 1960	Total Delinquent Tax and Penalty	REMARKS	
	District No.	Rate	District No.	Rate	District No.	Rate																	District No.
1	120						3398		3398	1	PAID IN FULL	MAY 29 1959	10713										
2	76						2152		2152	2	PAID IN FULL	MAY 5 1959	2348										
3	12						340	08	348	3	PAID IN FULL	FEB 4 1959	910										
4	73						2068	48	2116	4	PAID IN FULL	MAY 6 1959											
5	12						340	08	348	5	PAID IN FULL	MAY 6 1959	7259										
6	48						1360	32	1392	6	PAID IN FULL	MAY 19 1959	7924										
7	15						424	10	434	7	PAID IN FULL	MAY 14 1959	7694										
8	73						2068	48	2116	8	PAID IN FULL	MAY 14 1959											
9	48						1360	32	1392	9	PAID IN FULL	MAY 25 1959	9267										
10	15						424	10	434	10	PAID IN FULL	MAY 25 1959											
11	23						652	14	666	11	PAID IN FULL	FEB 4 1959	910										
12	8						226	06	232	12	PAID IN FULL	FEB 4 1959											
13	10						284	06	290	13	PAID IN FULL	FEB 4 1959											
14	9						204	06	260	14	PAID IN FULL	FEB 4 1959											
15										15													
16										16													
17										17													
18										18													
19										19													
20										20													

* 196 346 542 15350 228 15578 17 96 13782

Assessment Roll and Tax List of Real Property in the Town of Sylvan of Sylvan

* Indicate Type of Property: R-Residential, C-Commercial, I-Industrial, U-Utility, F-Farm, L-Lakeshore, T-Timber, M-Mineral

Table with columns: IN WHOSE NAME ASSESSED, TO WHOM TRANSFERRED, DESCRIPTION OF PROPERTY, TRUE AND FULL VALUATIONS, ASSESSED VALUATIONS, FINAL EQUALIZED VALUE. Includes handwritten entries for Hardy Lake Camp Assn. Inc., Ole Peterson, John O. Ferris, Gordon K. Rasmussen, etc.

Continued Next Page

Cass County, Minnesota, for Taxes for the Year 1958.

Table with columns: VALUATIONS BY SCHOOL DISTRICTS AS EQUALIZED BY DEPARTMENT OF TAXATION, Tax Including State Homestead, State Tax on Non-Homestead, SPECIAL TAXES, TOTAL TAXES, PAID, WHEN PAID, Number of Receipt, March Settlement 1959, June Settlement 1959, November Settlement 1959, Collections to First Monday in January 1960, Delinquent on First Monday in January 1960, Total Delinquent Tax and Penalty, REMARKS. Includes handwritten entries for taxes paid and settlement dates.

133-29

133-30

Land & Aler's 1st Assn. to Sylvan Co.

Sylvan School Village of Sylvan

North Sylvan

Carlson's Sylvan

Maya Bo

Assessment Roll and Tax List of Real Property in the Town of Sylvan

* Indicate Type of Property: R-Residential, C-Commercial, I-Industrial, U-Utility, F-Farm, L-Lakeshore, T-Timber, M-Mineral

Form 507 (1958) - REVISED

Table with columns: IN WHOSE NAME ASSESSED, TO WHOM TRANSFERRED, DESCRIPTION OF PROPERTY (SUBDIVISION, Sec. of Lot, Town or Block, Reg., Number of Acres of Land), TRUE AND FULL VALUATIONS (LAND, BUILDINGS, MACHINERY, TOTAL), ASSESSED VALUATIONS (RURAL, ALL OTHER, MACHINERY, TOTAL ASSESSED VALUE), FINAL EQUALIZED VALUE.

M. S. & Anise Rasmussen
Ole Peterson & Adolph Stauber, each 1/2 Int.
Gordon Rasmussen

Cass County, Minnesota, for Taxes for the Year 1958.

Table with columns: SOLD FOR TAXES, VALUATIONS BY SCHOOL DISTRICTS AS EQUALIZED BY DEPARTMENT OF TAXATION, Tax including State Homestead, State Tax on Non-Homestead, SPECIAL TAXES, TOTAL TAXES, PAID, WHEN PAID, Number of Receipt, March Settlement 1959, June Settlement 1959, Penalty, November Settlement 1959, Collections to First Monday in January 1960, Delinquent on First Monday in January 1960, Total Delinquent Tax and Penalty, REMARKS.

133-30

Land & Millage Tax
Sylvan School Village of Sylvan
North Sylvan
Cass County's Sylvan
Land & Millage Tax

Assessment Roll and Tax List of Real Property in the Town of Sylvan

Cass County, Minnesota, for Taxes for the Year 1958.

* Indicate Type of Property: R-Residential, C-Commercial, I-Industrial, U-Utility, F-Farm, L-Lakeshore, T-Timber, M-Mineral

IN WHOSE NAME ASSESSED	TO WHOM TRANSFERRED	DESCRIPTION OF PROPERTY						TRUE AND FULL VALUATIONS										FINAL EQUALIZED VALUE			
		SUBDIVISION	Sec. or Lot	Town or Block	Rng.	Number of Acres of Land		LAND Exclusive of Structures and Improvements	BUILDINGS and Other Structures	MACHINERY Permanently Attached to Real Estate	TOTAL True and Full Value	RURAL		ALL OTHER			MACHINERY Permanently Attached to Real Estate		TOTAL ASSESSED VALUE	Total Assessed Value as Equalized by the Board of Review	
					Acres	100ths		Dollars	Dollars	Dollars	Dollars	Dollars	Dollars	Dollars	Dollars	Dollars	Dollars	Dollars	Dollars	Dollars	
		133-30																			

Alvin D Johnson 1/3, Adolph Hagen 1/6, John Hagen 1/6, Hjelmert A. Lennman 1/6, Clarence L. Lennman 1/6

SOLD FOR TAXES	VALUATIONS BY SCHOOL DISTRICTS AS EQUALIZED BY DEPARTMENT OF TAXATION						Tax Including State Homestead	State Tax on Non-Homestead	SPECIAL TAXES	TOTAL TAXES	PAID	WHEN PAID	Number of Receipt	March Settlement 1959	June Settlement 1959	Penalty	November Settlement 1959	Penalty	Collections to First Monday in January 1960	Penalty	Delinquent on First Monday in January 1960	Total Delinquent Tax and Penalty	REMARKS
	District No. 11	District No. 12	District No. 13	District No. 14	District No. 15	District No. 16																	
	Rate	Rate	Rate	Rate	Rate	Mills	Mills	\$ cts.	\$ cts.	\$ cts.	Month	Day	Year	\$ cts.	\$ cts.	\$ cts.	\$ cts.	\$ cts.	\$ cts.	\$ cts.	\$ cts.		

Land & Alices 1st 2nd 3rd 4th 5th 6th 7th 8th 9th 10th 11th 12th 13th 14th 15th 16th 17th 18th 19th 20th
Sylvan Village of Sylvan
North Sylvan
Carlson's Sylvan
Sylvan

Assessment Roll and Tax List of Real Property in the Town of Sylvan

Indicate Type of Property: R-Residential, C-Commercial, I-Industrial, U-Utility, F-Farm, L-Lakeshore, T-Timber, M-Mineral

Form 300 (1-15-54) REVISED

133-29
133-30

IN WHOSE NAME ASSESSED	TO WHOM TRANSFERRED	DESCRIPTION OF PROPERTY				TRUE AND FULL VALUATIONS							ASSESSED VALUATIONS					FINAL EQUALIZED VALUE
		SUBDIVISION	Sec. of Lot	Town or Block	Reg.	Number of Acres of Land	LAND Exclusive of Structures and Improvements	BUILDINGS and Other Structures	MACHINERY Permanently Attached to Real Estate	TOTAL True and Full Value	Homestead 20%	RURAL Over \$4,000 and Non-Homestead 33 1/3%	Timber Land Class 3c 20%	ALL OTHER Homestead 25% Over \$4,000 and Non-Homestead 40%	MACHINERY Permanently Attached to Real Estate 33 1/3%	TOTAL ASSESSED VALUE	Total Assessed Value as Equalized by the Board of Review	
State of Minnesota																		
State of Minnesota																		
State of Minnesota																		
State of Minnesota																		
State of Minnesota																		
State of Minnesota																		
State of Minnesota																		
State of Minnesota																		
State of Minnesota																		
State of Minnesota																		
State of Minnesota																		
Leslie E. & Rose M. Piety																		
State of Minnesota																		
State of Minnesota																		
State of Minnesota																		
State of Minnesota																		
State of Minnesota																		
State of Minnesota																		
State of Minnesota																		

Cass County, Minnesota, for Taxes for the Year 1958.

SOLD FOR TAXES	VALUATIONS BY SCHOOL DISTRICTS AS EQUALIZED BY DEPARTMENT OF TAXATION						Tax Including State Homestead	State Tax on Non-Homestead	SPECIAL TAXES	TOTAL TAXES	PAID	WHEN PAID	Number of Receipt	March Settlement 1959	June Settlement 1959	Penalty	November Settlement 1959	Penalty	Collections to First Monday in January 1960	Penalty	Delinquent on First Monday in January 1960	Total Delinquent Tax and Penalty	REMARKS
	District No. 1	District No. 2	District No. 3	District No. 4	District No. 5	District No. 6																	

Land & Allyn's 1st Sylvan Sub Village of Sylvan North Sylvan Early on's Sylvan 14th B...

Assessment Roll and Tax List of Real Property in the Town of Sylvan, Cass County, Minnesota, for Taxes for the Year 1958.

Form 307 (REV. 5-15-56) MINN. STAT. ANN. § 260.01

* Indicate Type of Property: R-Residential, C-Commercial, I-Industrial, U-Utility, F-Farm, L-Lakeshore, T-Timber, M-Mineral

Table with columns: IN WHOSE NAME ASSESSED, TO WHOM TRANSFERRED, DESCRIPTION OF PROPERTY, TRUE AND FULL VALUATIONS, ASSESSED VALUATIONS, and FINAL EQUALIZED VALUE. Includes handwritten entries for various property owners like Donald R. Farmer and Percy S. McClay.

Continued Next Page

Cass County, Minnesota, for Taxes for the Year 1958.

Table with columns: VALUATIONS BY SCHOOL DISTRICTS AS EQUALIZED BY DEPARTMENT OF TAXATION, TAX INCLUDING STATE HOMESTEAD, SPECIAL TAXES, TOTAL TAXES, PAID, WHEN PAID, Number of Receipt, March Settlement, June Settlement, Penalty, November Settlement, Collections to First Monday in January, Delinquent on First Monday in January, Total Delinquent Tax and Penalty, and REMARKS.

Land & A... Village of Sylvan

Assessment Roll and Tax List of Real Property in the Town of Sylvan, Minnesota

Indicate Type of Property: R-Residential, C-Commercial, I-Industrial, U-Utility, F-Farm, L-Lakeshore, T-Timber, M-Mineral

Form 302-1-58

133-28

133-30

Main assessment table with columns: IN WHOSE NAME ASSESSED, TO WHOM TRANSFERRED, SUBDIVISION, TRUE AND FULL VALUATIONS, ASSESSED VALUATIONS, FINANCIAL EQUALIZED VALUE.

Cass County, Minnesota, for Taxes for the Year 1958

Tax summary table with columns: VALUATIONS BY SCHOOL DISTRICTS AS EQUALIZED BY DEPARTMENT OF TAXATION, Tax Including State Homestead, State Tax on Non-Homestead, SPECIAL TAXES, TOTAL TAXES, PAID, WHEN PAID, Number of Receipt, March Settlement 1959, June Settlement 1959, November Settlement 1959, Penalty, Collections to First Monday in January 1960, Delinquent on First Monday in January 1960, Total Delinquent Tax and Penalty, REMARKS.

Assessment Roll and Tax List of Real Property in the Town of Sylvan

Indicate Type of Property: R-Residential, C-Commercial, I-Industrial, U-Utility, F-Farm, L-Lakeshore, T-Timber, M-Mineral

Table with columns: IN WHOSE NAME ASSESSED, TO WHOM TRANSFERRED, DESCRIPTION OF PROPERTY, TRUE AND FULL VALUATIONS, ASSESSED VALUATIONS, and FINAL EQUALIZED VALUE. Includes handwritten entries for Harriet B. Kerauf, Richard E. Kerauf, Paul O. Berglund, N.W. Paper Co., and Ralph A. & Cora B. Cole.

Cass County, Minnesota, for Taxes for the Year 1958.

Table with columns: VALUATIONS BY SCHOOL DISTRICTS AS EQUALIZED BY DEPARTMENT OF TAXATION, Tax Including State Homestead, State Tax on Non-Homestead, SPECIAL TAXES, TOTAL TAXES, PAID, WHEN PAID, Number of Receipt, March Settlement 1959, June Settlement 1959, Penalty, November Settlement 1959, Collections to First Monday in January 1960, Delinquent on First Monday in January 1960, Total Delinquent Tax and Penalty, and REMARKS.

Vertical text on the right edge of the page: Land & Allman's 1st, Sylvan, Village of Sylvan, North Sylvan, Curlyon's Sylvan, 2nd, Land & Allman's 2nd, 3rd, 4th, 5th, 6th, 7th, 8th, 9th, 10th, 11th, 12th, 13th, 14th, 15th, 16th, 17th, 18th, 19th, 20th.

Assessment Roll and Tax List of Real Property in the Town of Sylvan

Indicate Type of Property: R-Residential, C-Commercial, I-Industrial, U-Utility, F-Farm, L-Lakeshore, T-Timber, M-Mineral

Table with columns: IN WHOSE NAME ASSESSED, TO WHOM TRANSFERRED, SUBDIVISION, TRUE AND FULL VALUATIONS, ASSESSED VALUATIONS, and FINAL EQUALIZED VALUE. Includes entries for George W. & Grace Wilson, Geo. & Ruth E. Hip, Geo. Hip, Geo. W. & Ruth E. Hip, Geo. Hip, George W. & Ruth E. Hip, Jack Barnett, George W. Wilson, and Arno & Clara S. Ressler.

Cass County, Minnesota, for Taxes for the Year 1958.

Table with columns: VALUATIONS BY SCHOOL DISTRICTS AS EQUALIZED BY DEPARTMENT OF TAXATION, Tax including State Homestead, State Tax on Non-Homestead, SPECIAL TAXES, TOTAL TAXES, PAID, WHEN PAID, Number of Receipt, March Settlement 1959, June Settlement 1959, Penalty, November Settlement 1959, Penalty, Collections to First Monday in January 1960, Delinquent on First Monday in January 1960, Total Delinquent Tax and Penalty, and REMARKS. Includes handwritten notes and dates like '1st HALF PAID MAY 29 1959'.

133-29

133-30

Land & Allotment of Sylvan, Minn. Village of Sylvan, North Sylvan, Carleton's Sylvan, Dan B.

Assessment Roll and Tax List of Real Property in the Town of Sylvan, Minnesota

Indicate Type of Property: R-Residential, C-Commercial, I-Industrial, U-Utility, F-Farm, L-Lakeshore, T-Timber, M-Mineral

Table with columns: IN WHOSE NAME ASSESSED, TO WHOM TRANSFERRED, DESCRIPTION OF PROPERTY, TRUE AND FULL VALUATIONS, ASSESSED VALUATIONS, FINAL EQUALIZED VALUE. Includes entries for Arno & Clara L. Rossler, O. R. & Erna Berndt, Willis & Classic Mann, Ernest & Grace Glishurst, Amiel Berndt, Wesley & Emma Peck, Milford W. Wright, Daniel S. Phillips.

Cass County, Minnesota, for Taxes for the Year 1958.

Table with columns: SOLD FOR TAXES, VALUATIONS BY SCHOOL DISTRICTS AS EQUALIZED BY DEPARTMENT OF TAXATION, Tax including State Homestead, SPECIAL TAXES, TOTAL TAXES, PAID, WHEN PAID, Number of Receipt, March Settlement 1959, June Settlement 1959, November Settlement 1959, Collections to First Monday in January 1960, Delinquent on First Monday in January 1960, Total Delinquent Tax and Penalty, REMARKS. Includes entries for various districts and tax amounts.

133-29

133-30

Land & Albert's 1st... Sylvan... Village of Sylvan... North Sylvan... Cass County's Sylvan... Dan B...